



Statistical Update on LAX Aircraft Operations

May 11, 2011

LAX/Community Noise Roundtable



Overview

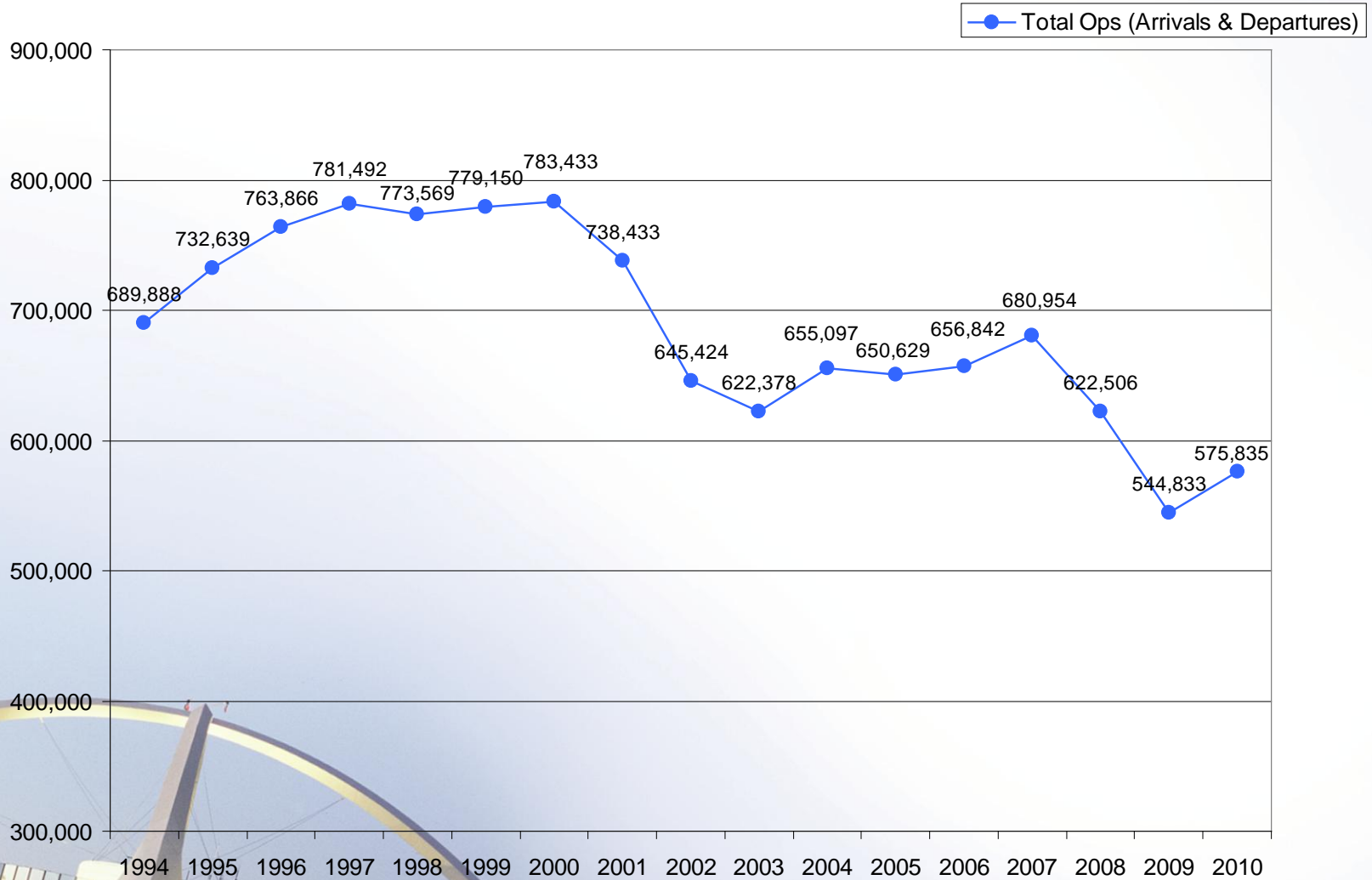
Statistical information on the following operations:

- East Departures
- Early Turns
- Go-arounds
- Short Turns
- Extended Downwind Approaches
- Palos Verdes Overflights
- Loop Departures
- 25L Departures



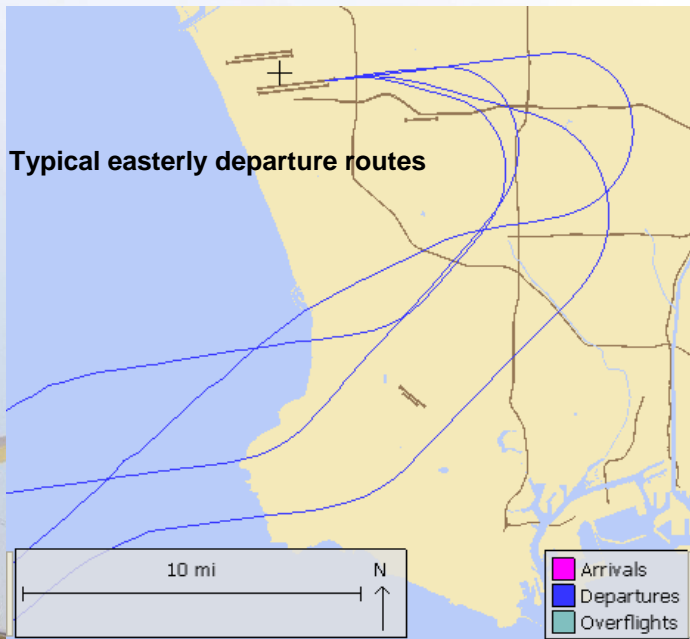
Total Operations Comparison

Total LAX Operations

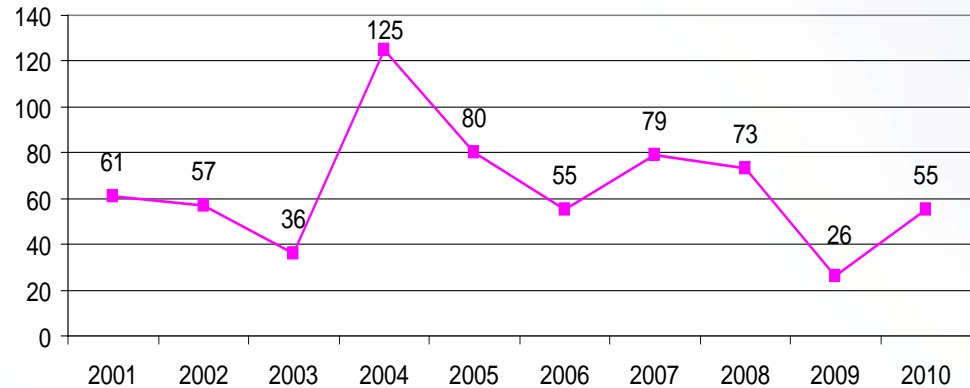


Non-Conforming East Departures Midnight to 6:30 AM

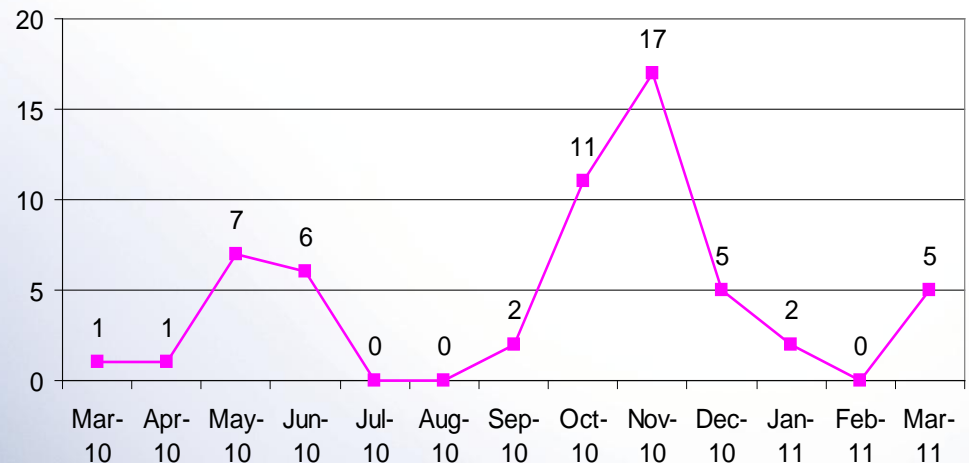
This report shows a summary of aircraft operations that depart to the east while the airport is still conducting westerly departures between midnight and 6:30 a.m. These individual easterly departures usually occur when the pilot of a heavy aircraft (e.g. B747s) determines that the tail wind is too great for the weight of the aircraft and requests to depart east into the wind for aircraft safety.



Annual Comparison

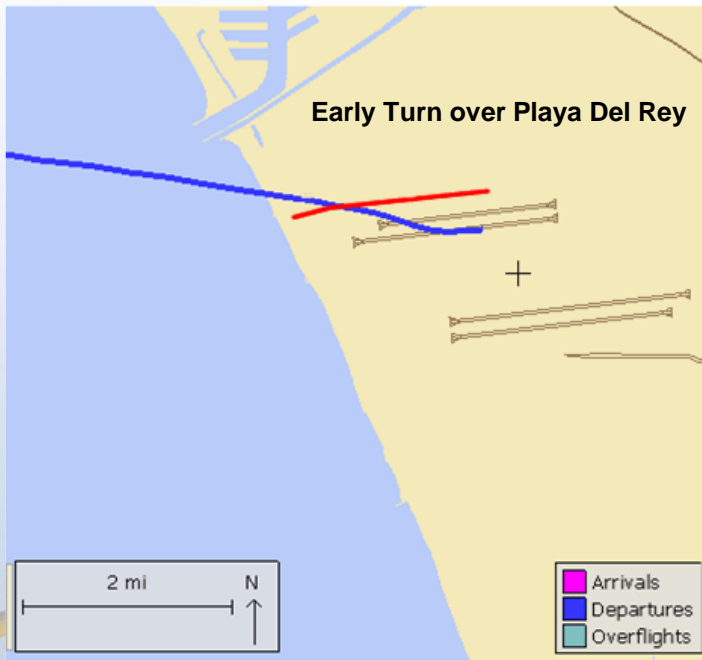


Monthly Comparison

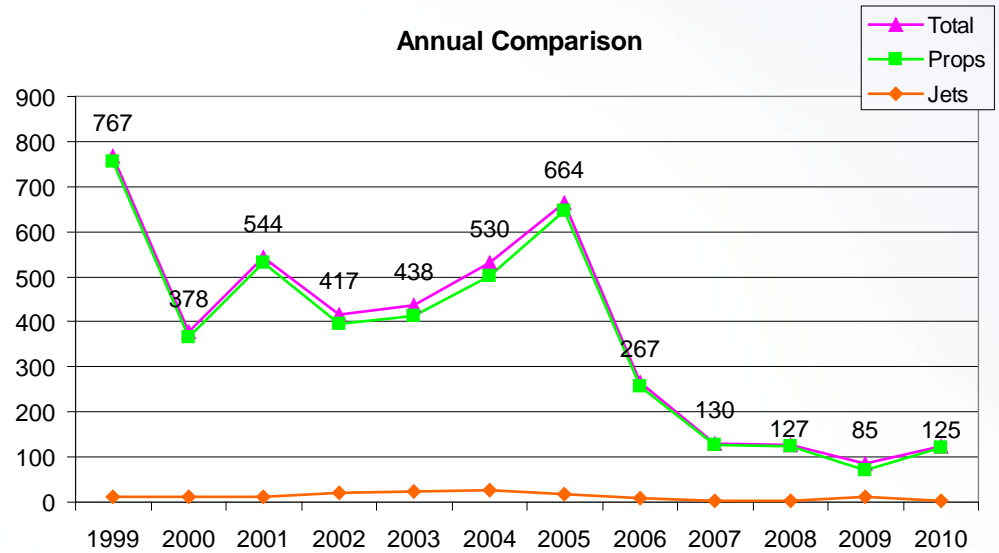


Early Turn to the North

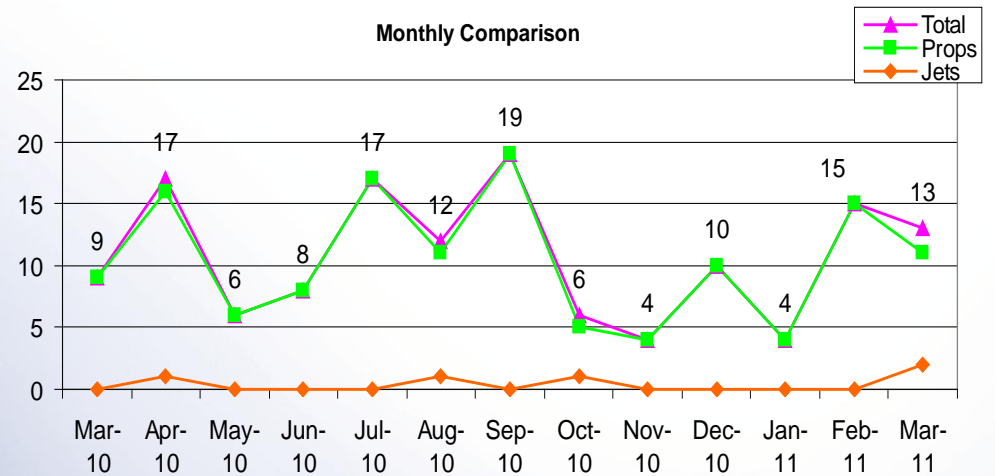
Aircraft departing to the ocean turn early prior to reaching the shoreline



Annual Comparison

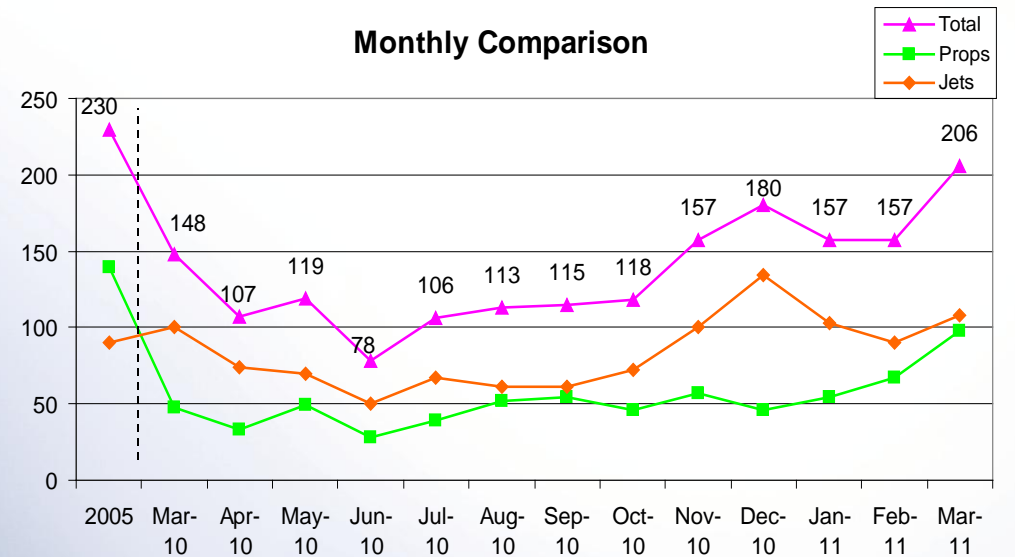
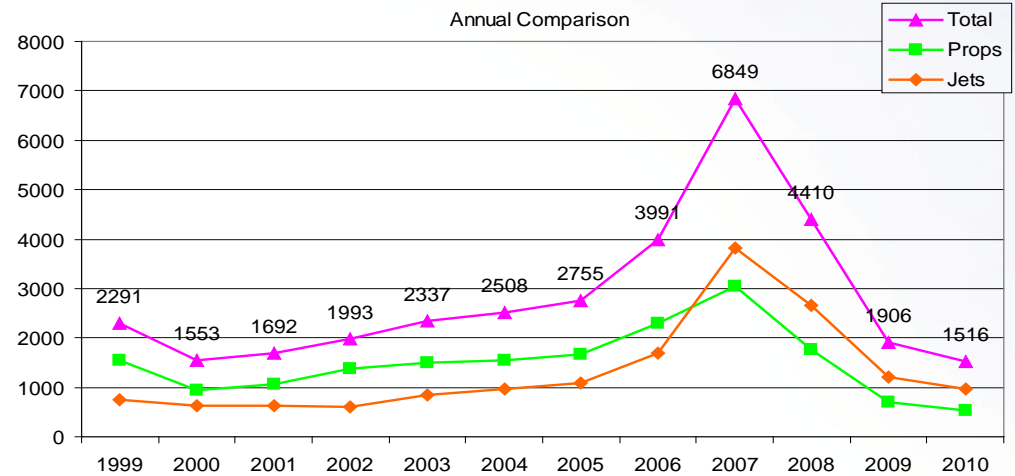
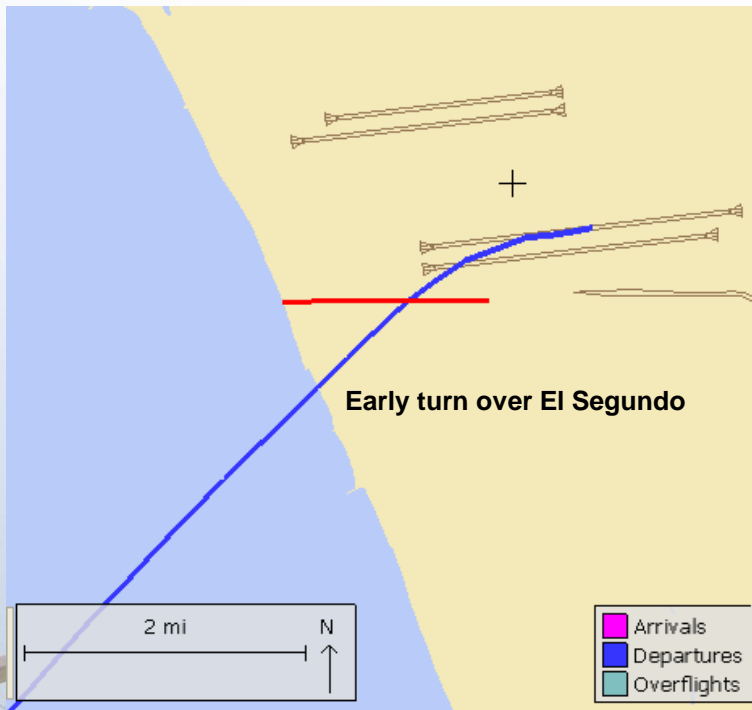


Monthly Comparison



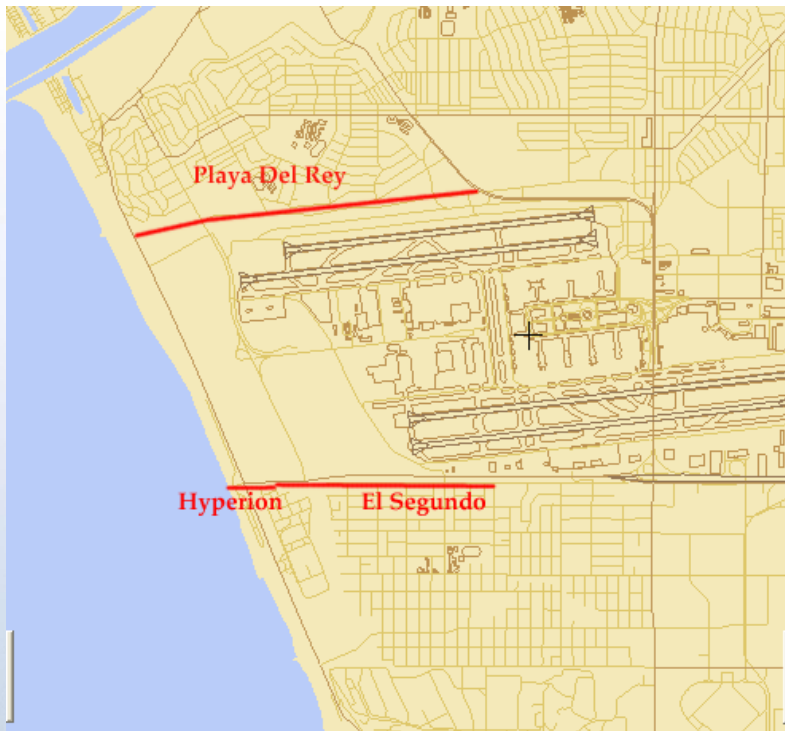
Early Turn to the South

Aircraft departing to the ocean turn early prior to reaching the shoreline



Early Turns Breakdown

March 2011



Total Early Turn Ops	219
Hyperion Gate	167
El Segundo Gate	39
Playa Del Rey Gate	13

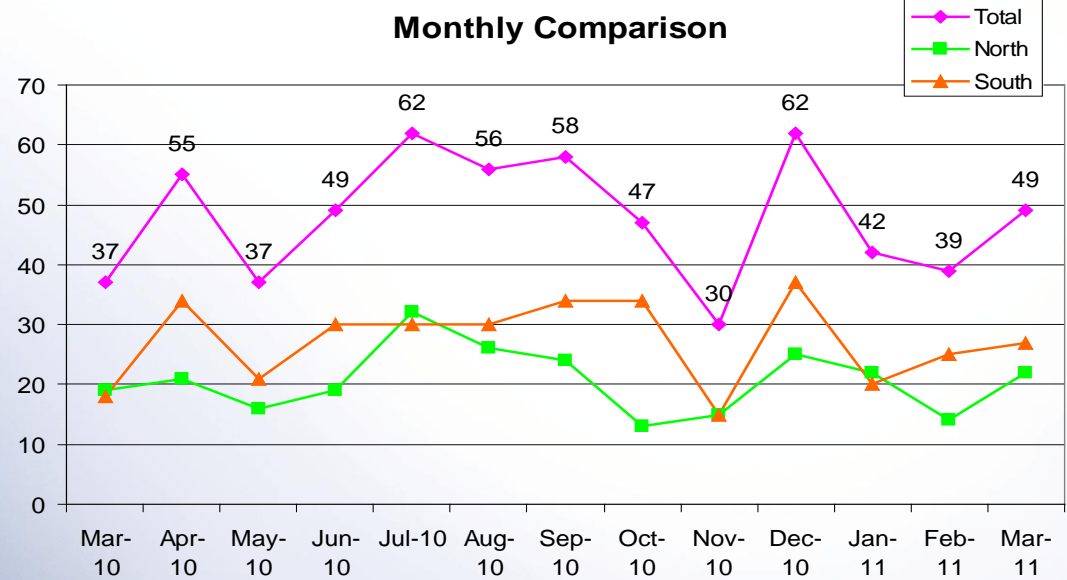
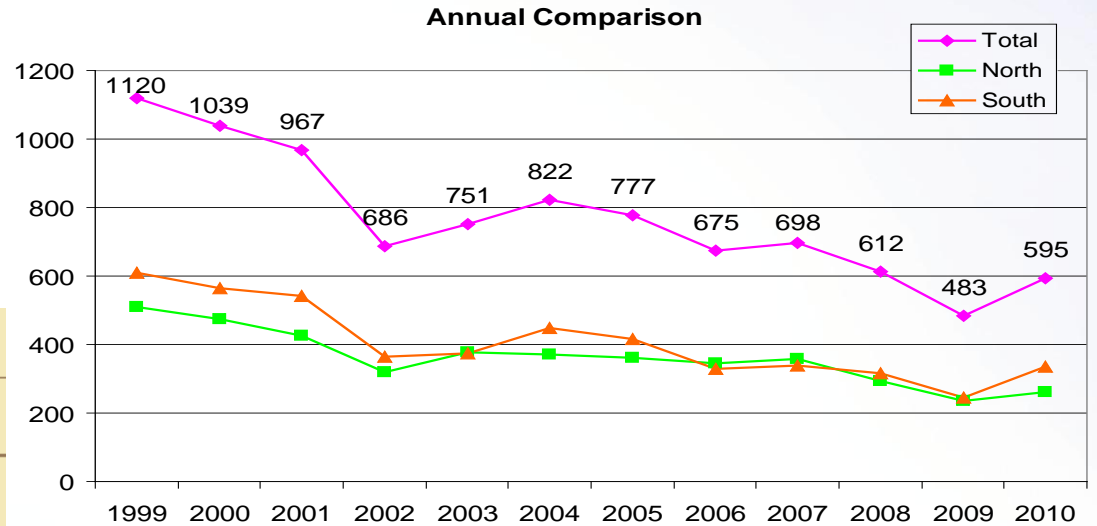
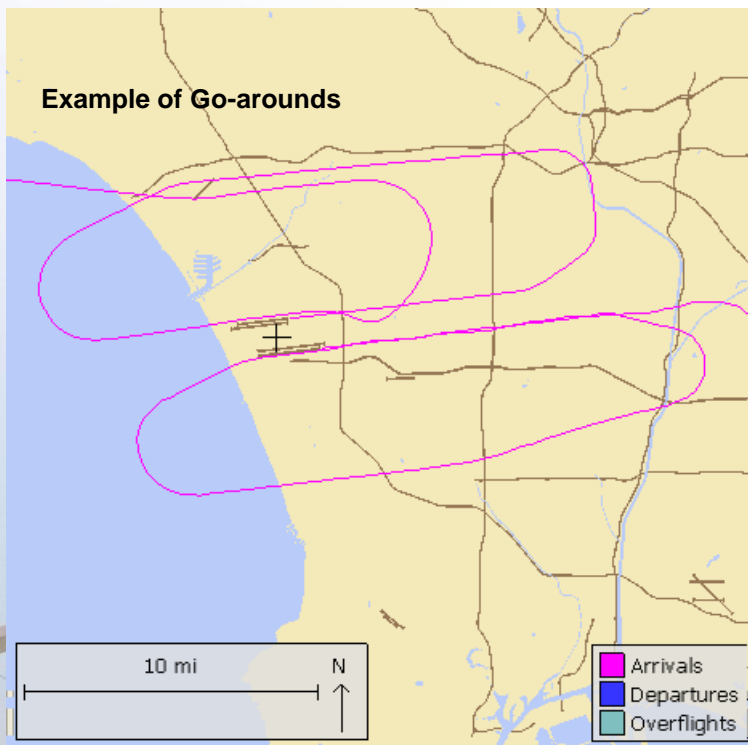
Result of Investigation

Total	52
FAA instructed	28
Pilot initiated	19
Wind drift	5

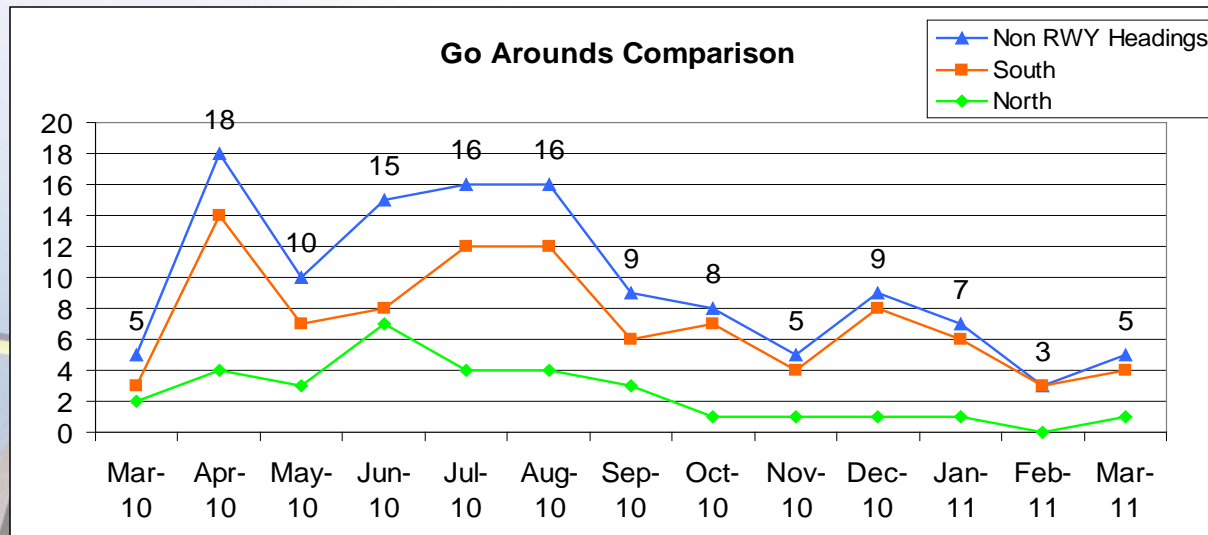
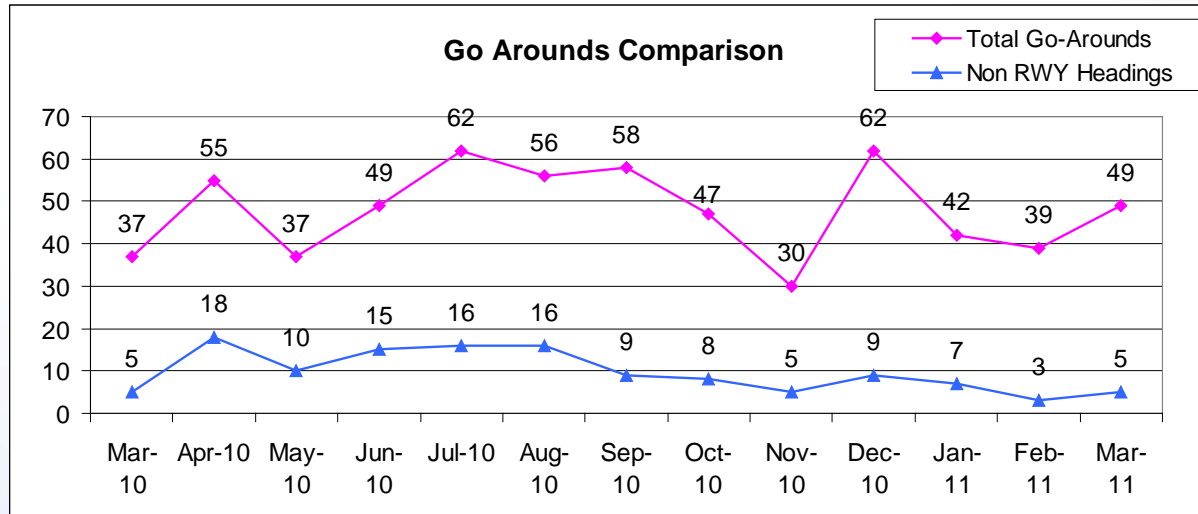


Go-Arounds

Monitoring pilot or ATC initiated go-arounds or missed approaches

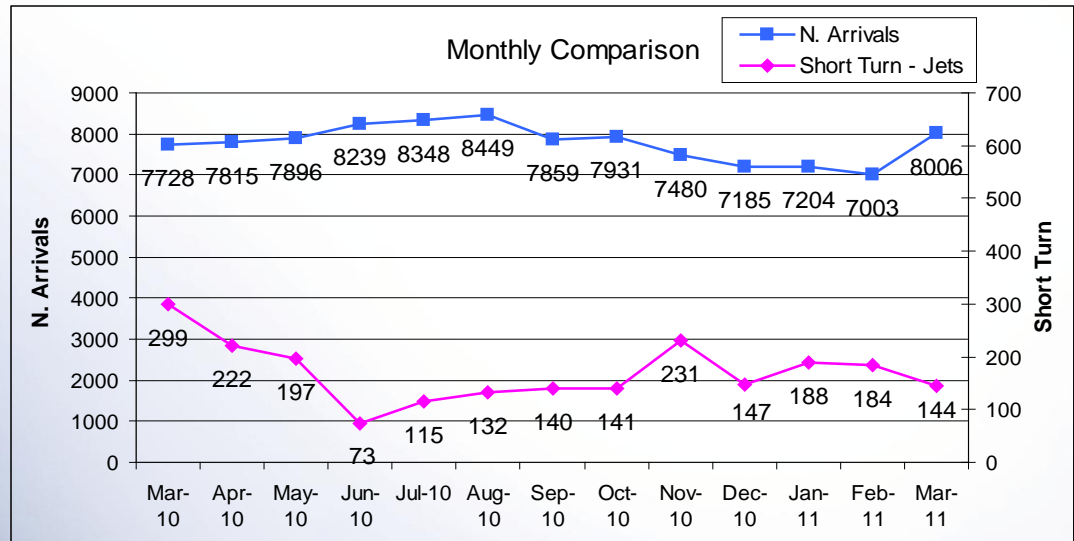
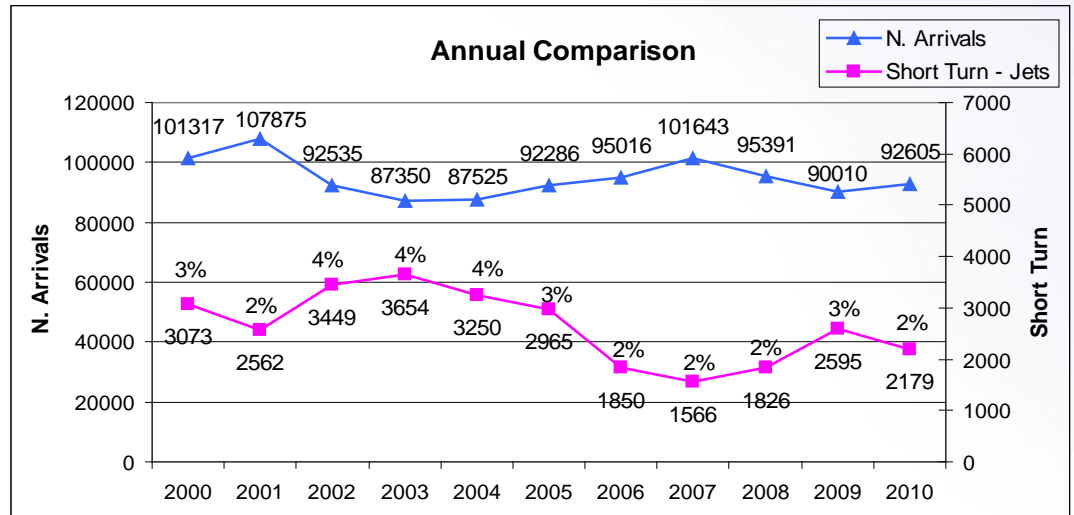
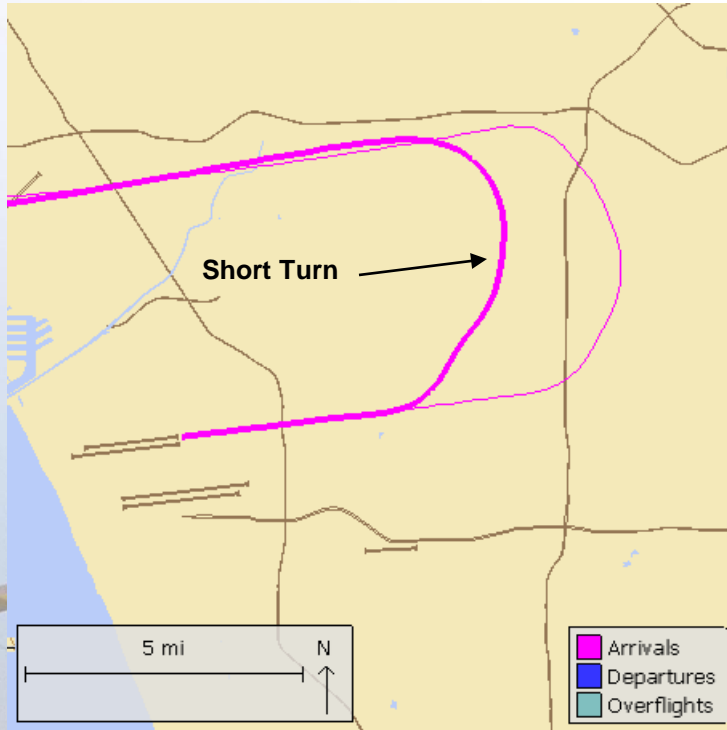


Go-Arounds – Not Maintaining RWY Headings

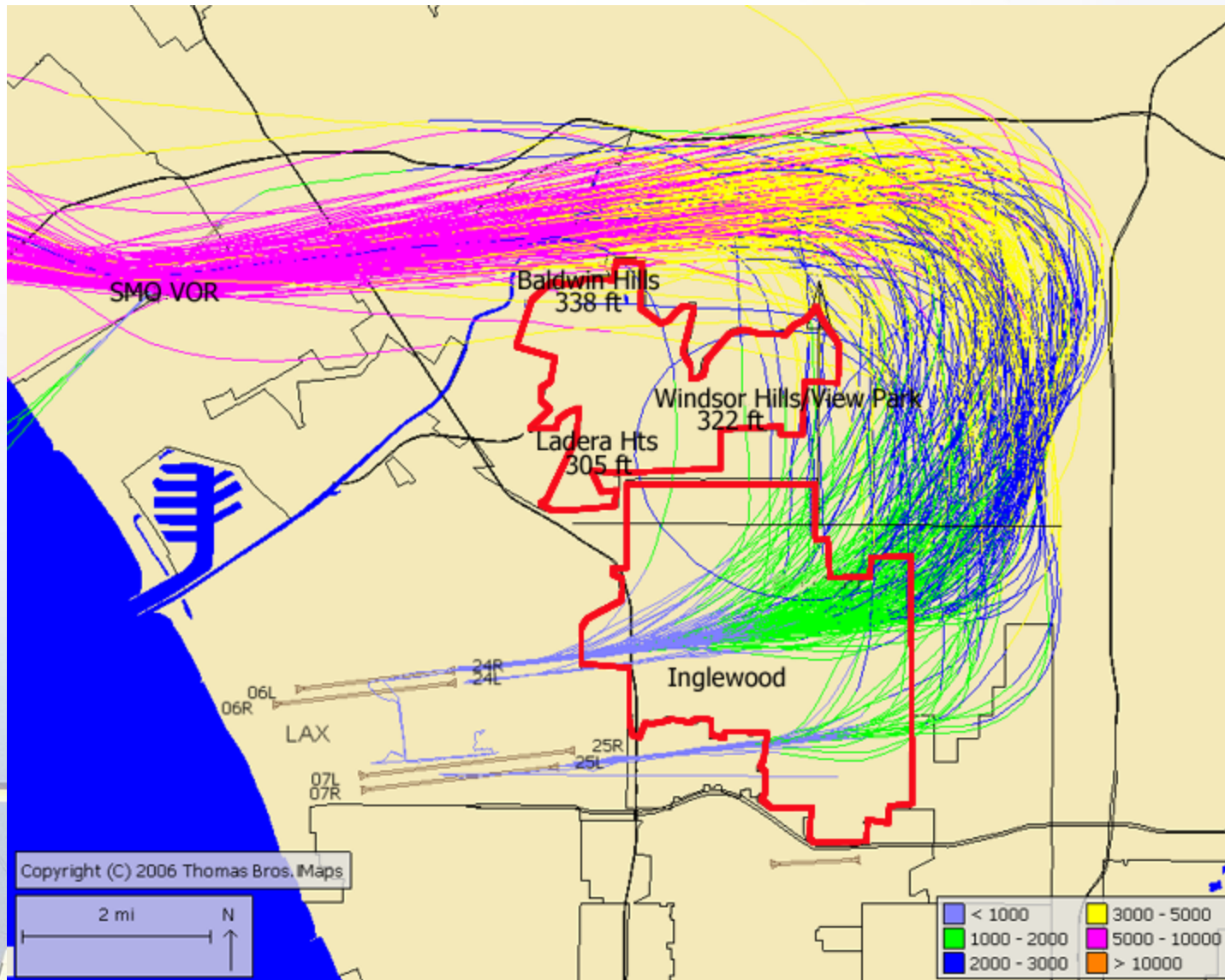


Short Turn Arrivals

Arriving jet aircraft turning early prior to reaching the Harbor Freeway to land at LAX

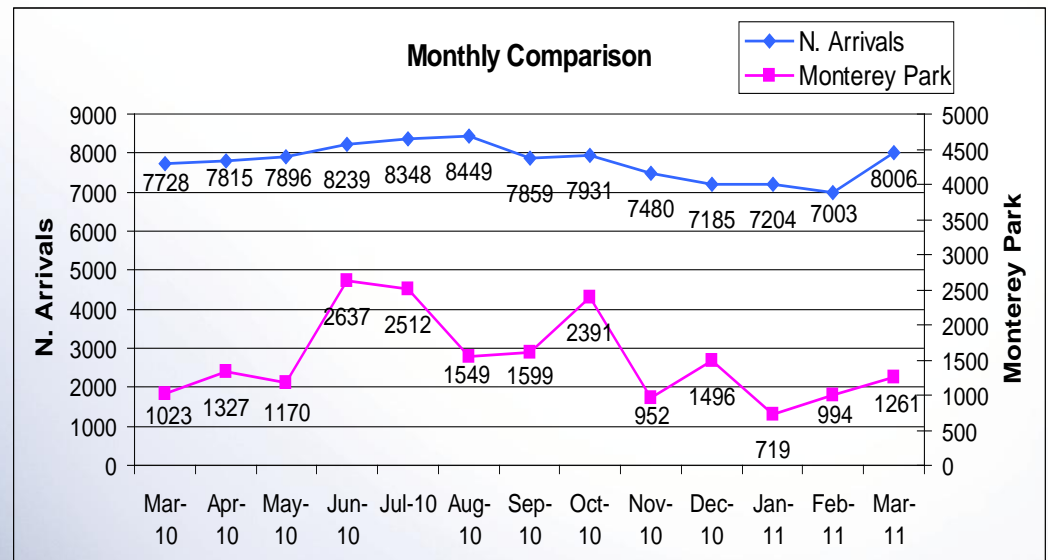
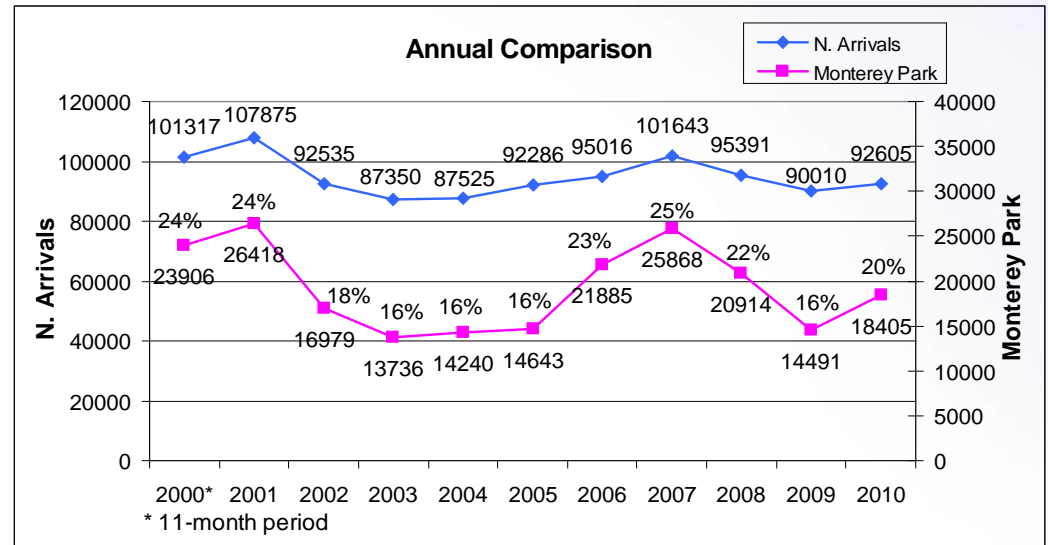
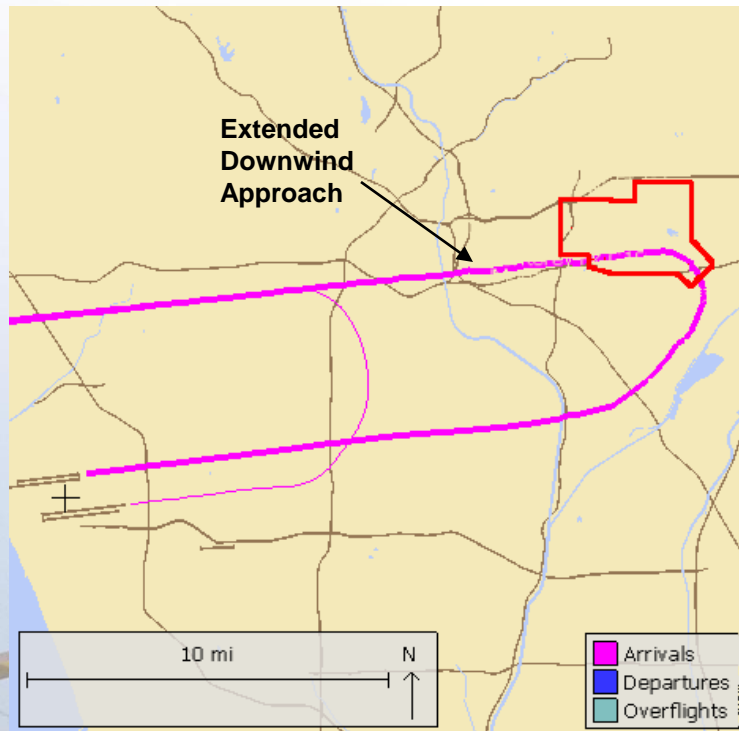


Short Turn Arrival Flight Tracks - One Month



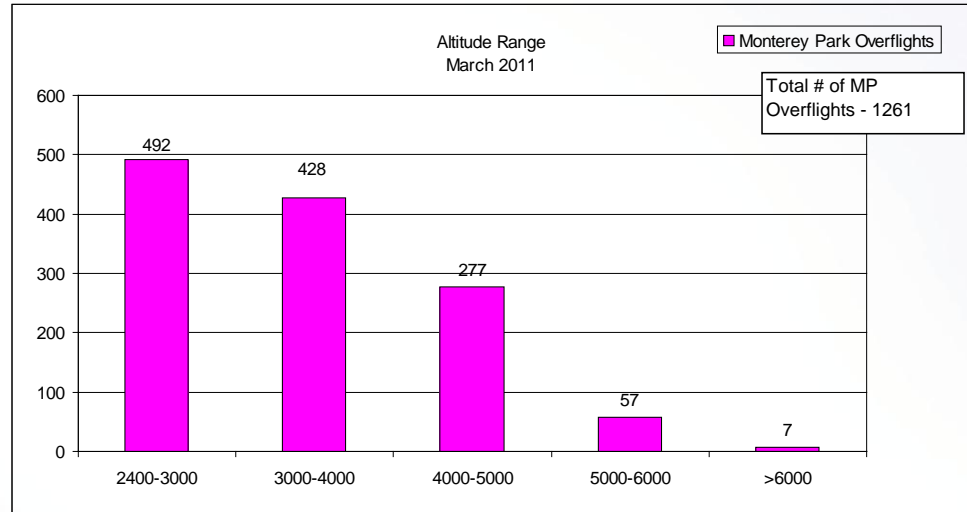
Extended Downwind Approach

Monitoring north arrivals extending downwind over Monterey Park boundary

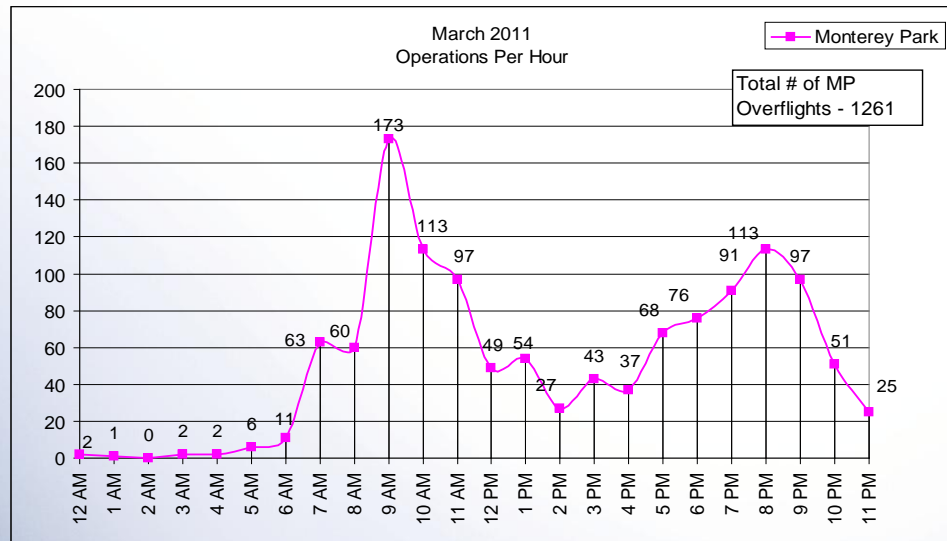


Extended Downwind Approach March 2011

Altitude over
Monterey Park

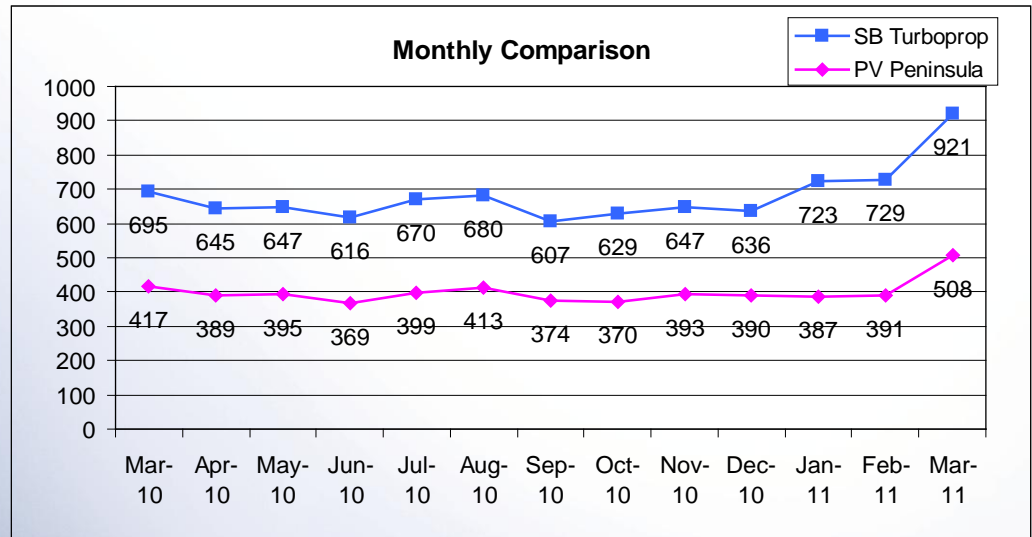
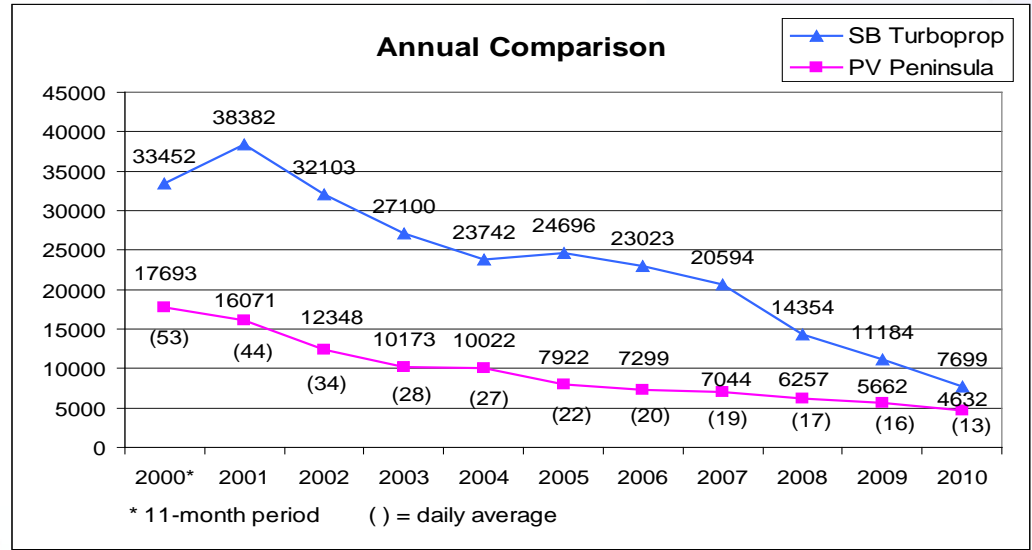
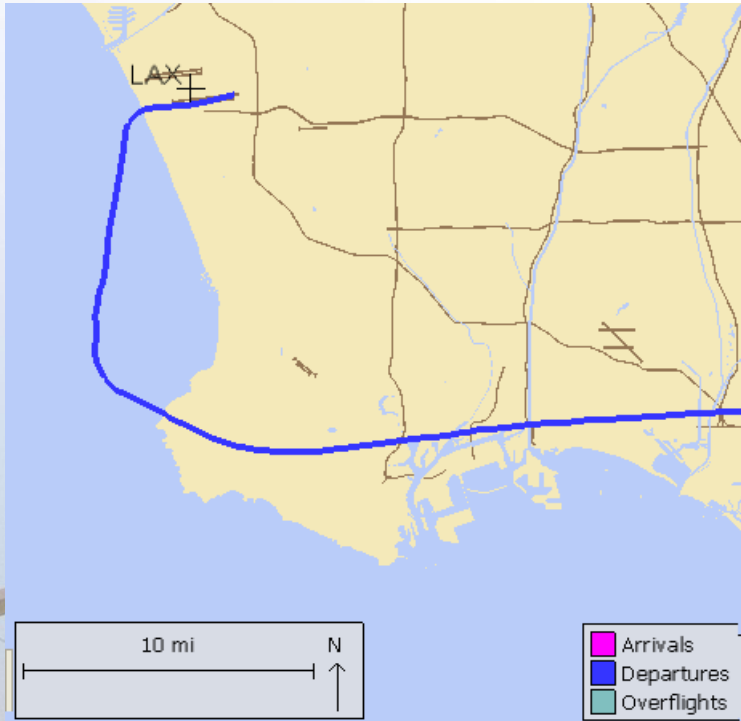


Number of
Operations By
Time of Day

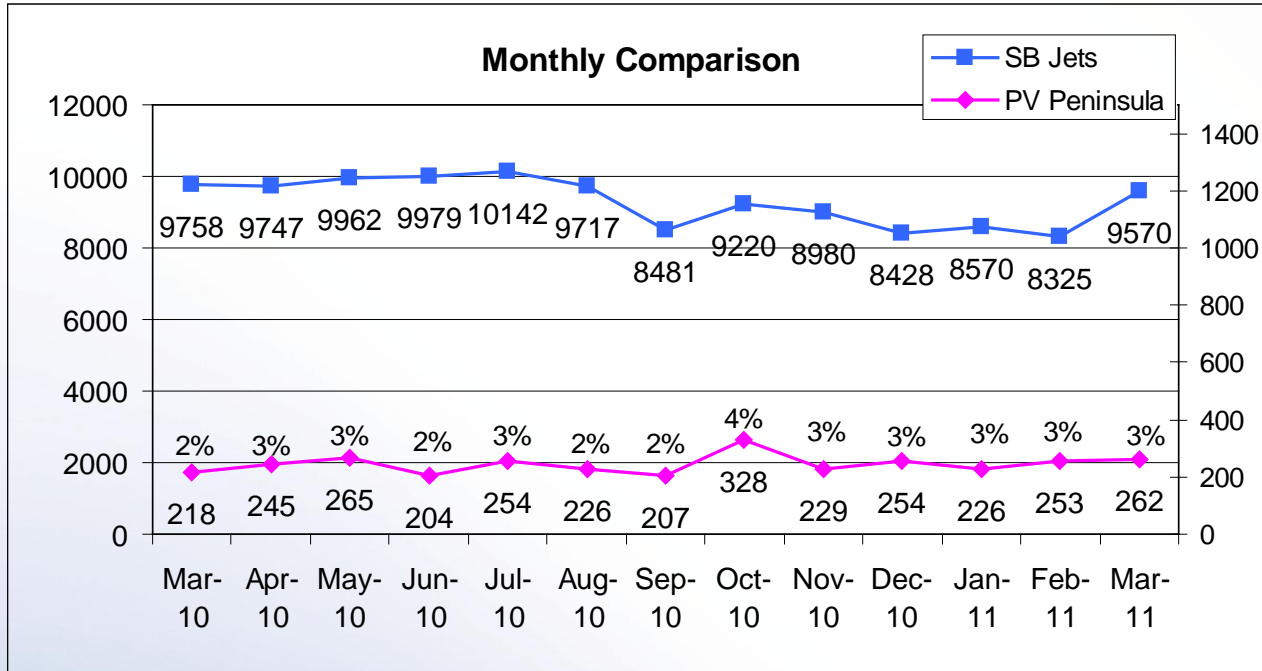


Palos Verdes Peninsula – Turboprop Overflights

Monitoring southbound turboprops departing from LAX that overfly Peninsula

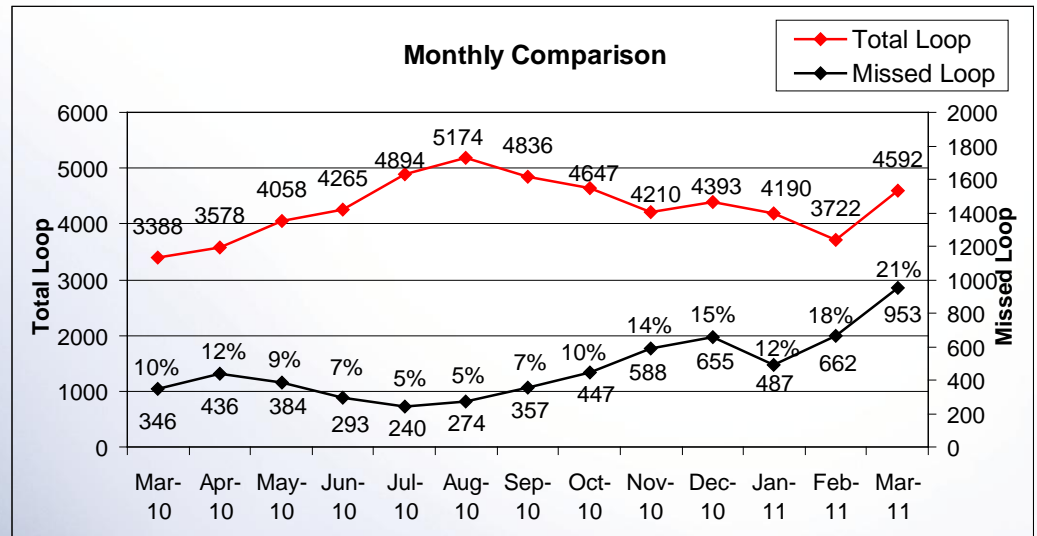
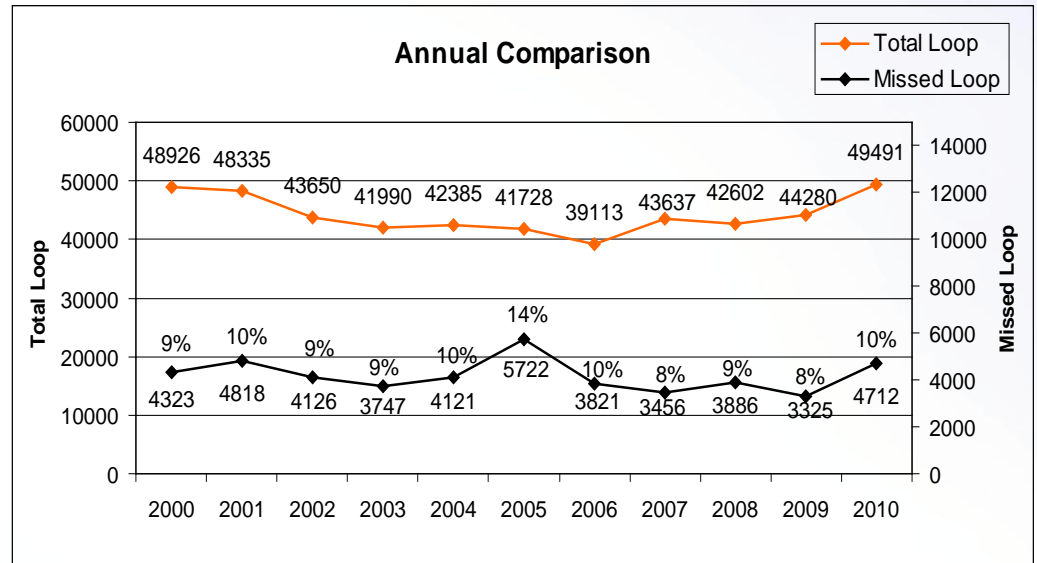
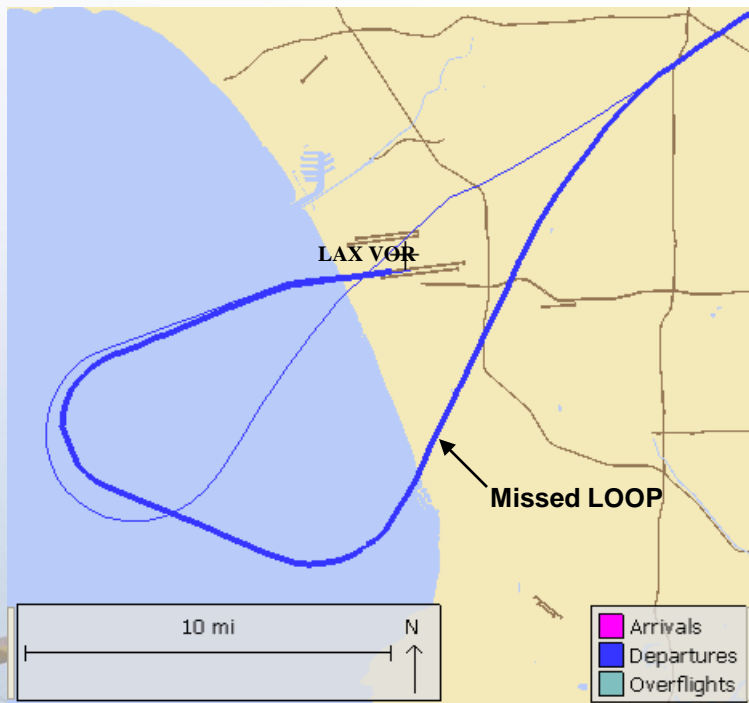


Palos Verdes Peninsula – Jet Overflights

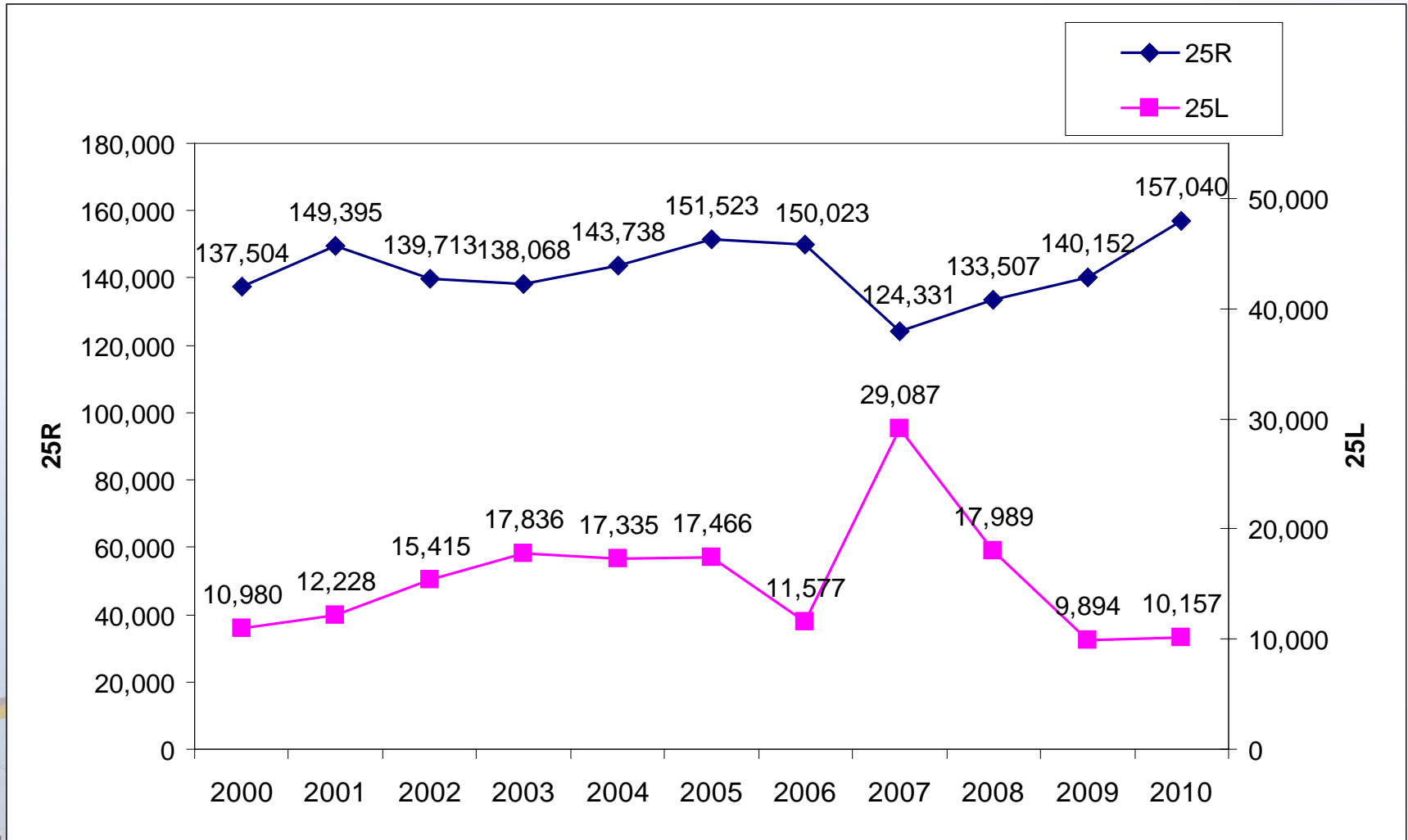


Missed LAX Loop Departure

Monitoring loop departures
overflying communities



Departures – South Runways (25L and 25R) Annual Comparison



Departures – South Runways (25L and 25R) 13-month period

