



Statistical Update on LAX Aircraft Operations

January 14, 2015

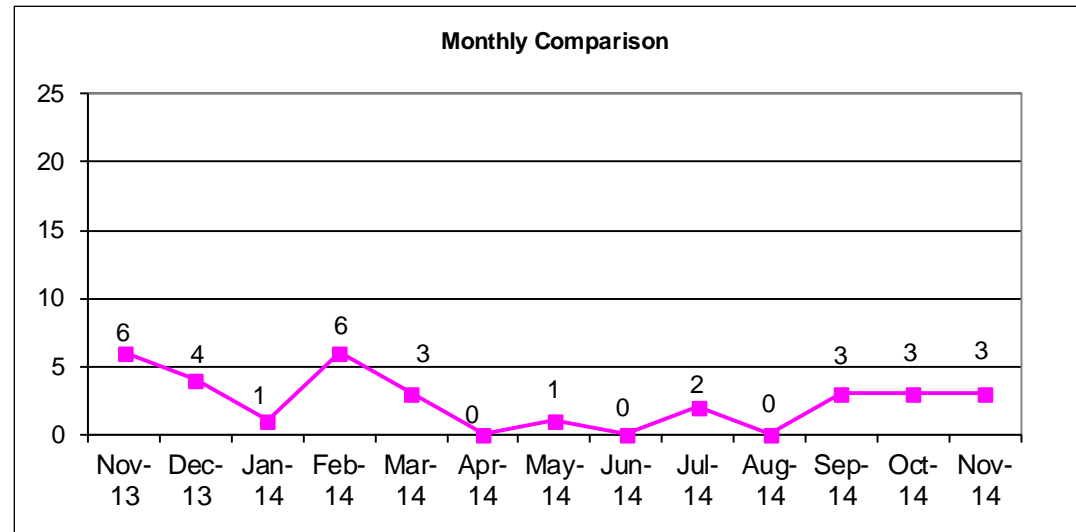
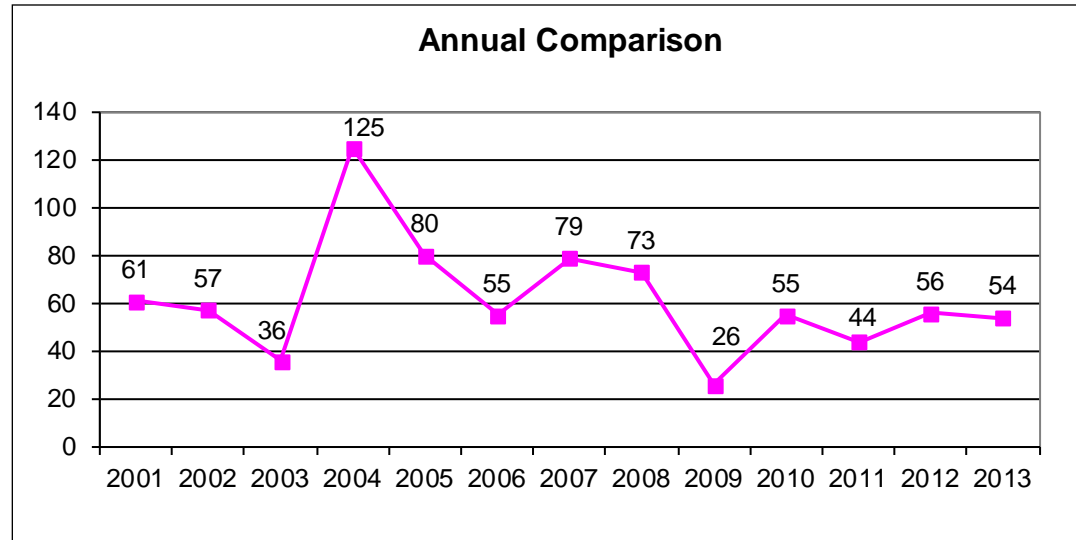
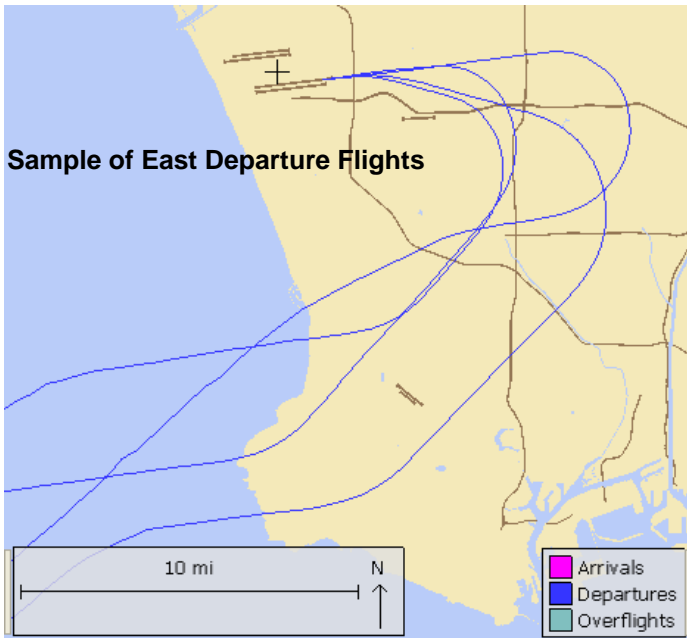
LAX/Community Noise Roundtable

Statistical information on the following operations:

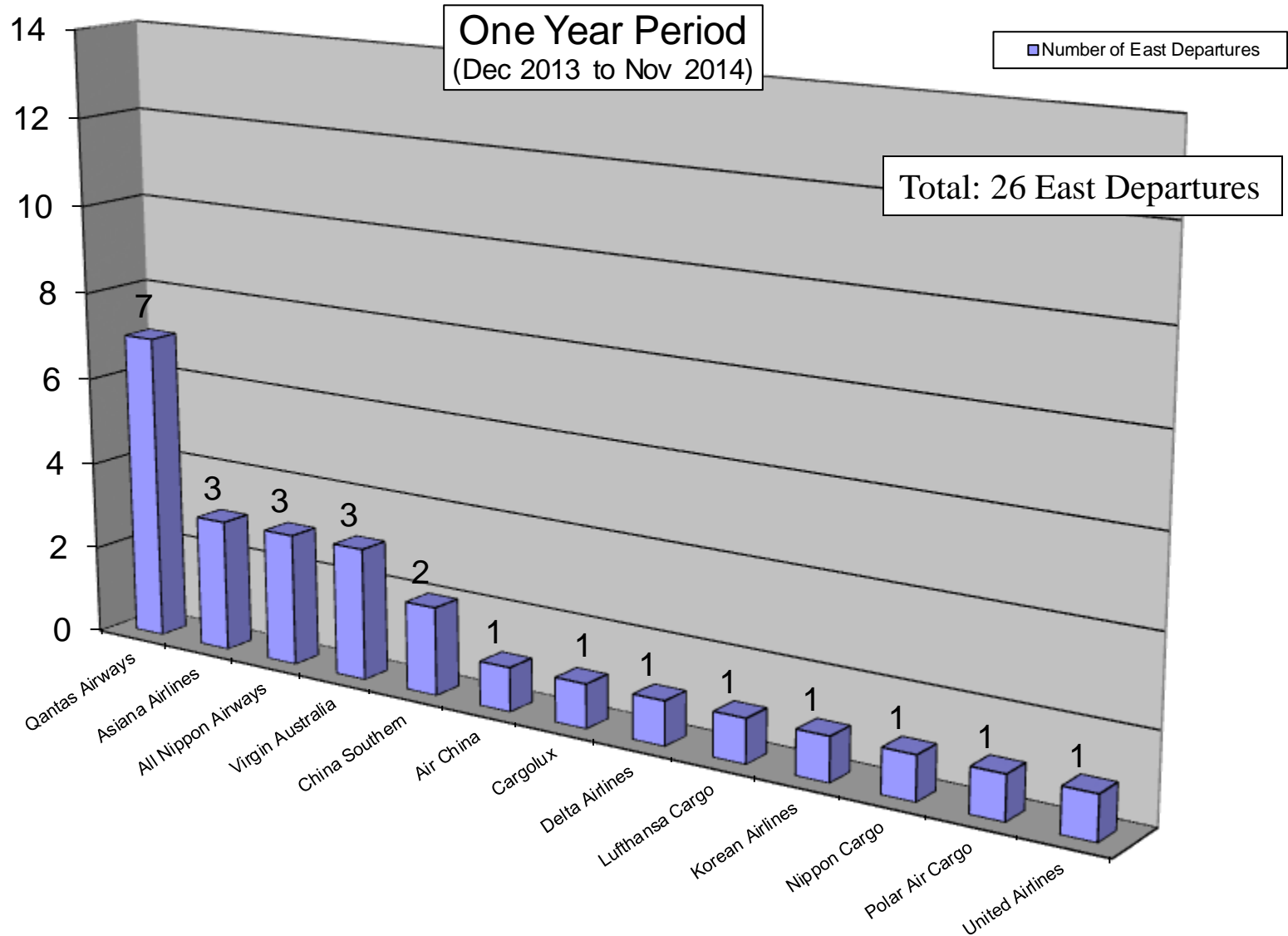
- East Departures
- Early Turns
- Go-arounds

Non-Conforming East Departures Midnight to 6:30 AM

This report shows a summary of aircraft operations that departed to the east while the airport is still conducting westerly departures between midnight and 6:30 a.m. These individual easterly departures usually occur when the pilot of a heavy aircraft (e.g. B747s) determines that the tail wind is too great for the weight of the aircraft and requests to depart east into the wind for aircraft safety.

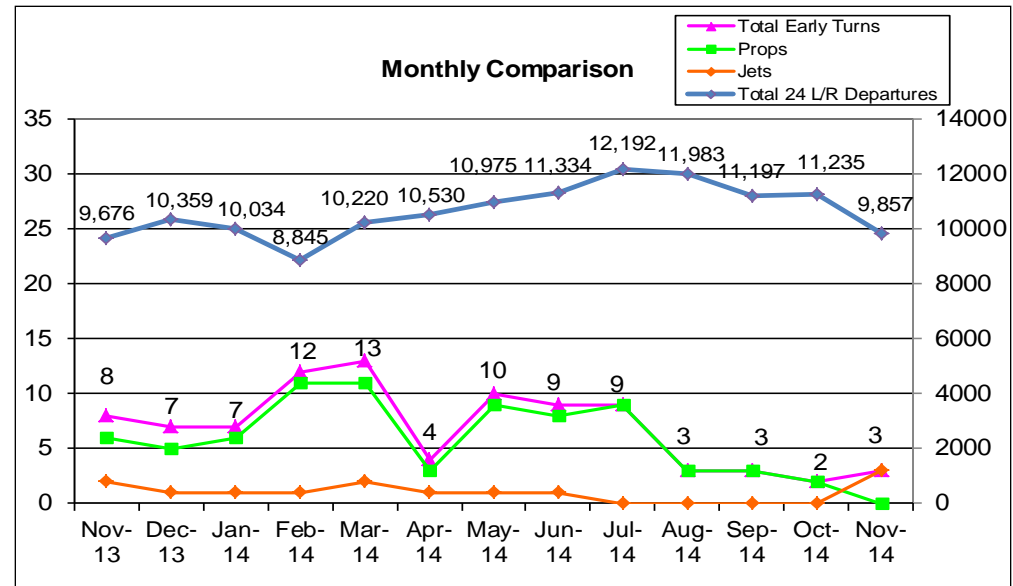
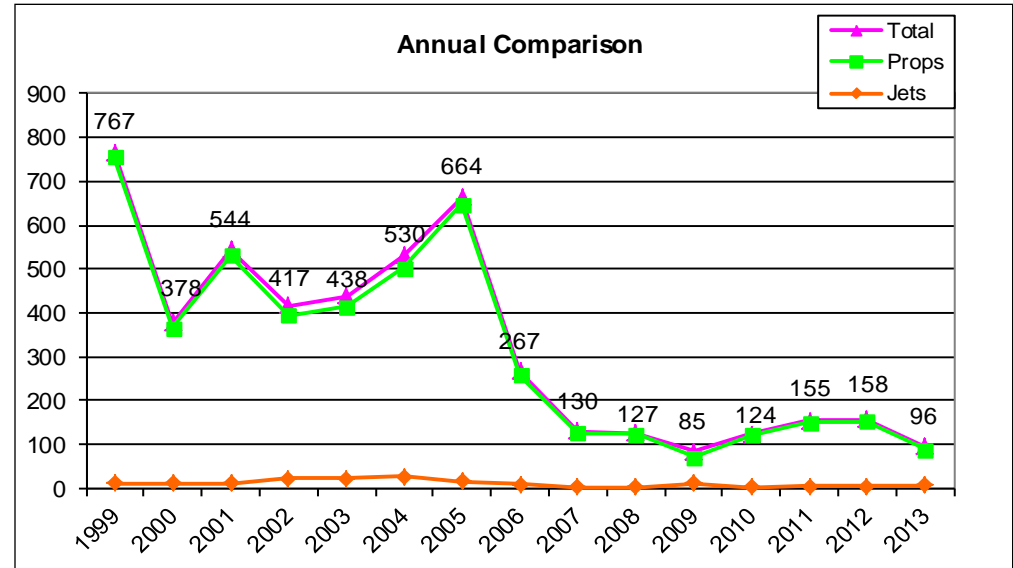
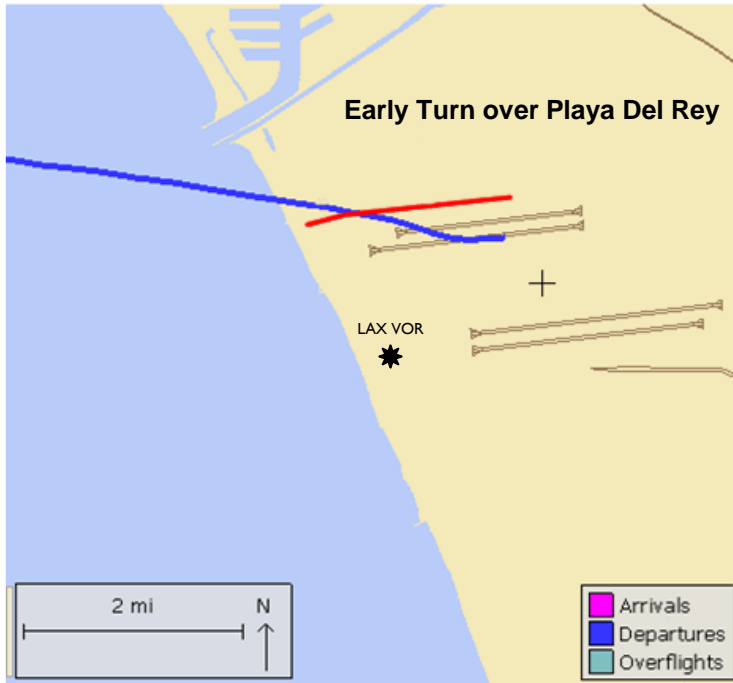


Non-Conforming East Departures by Operator Midnight to 6:30 AM



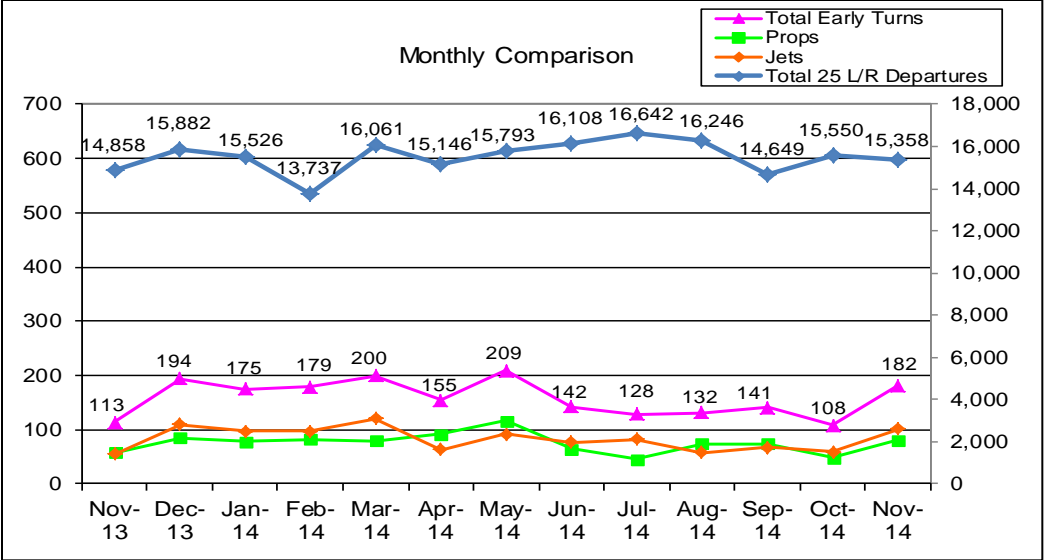
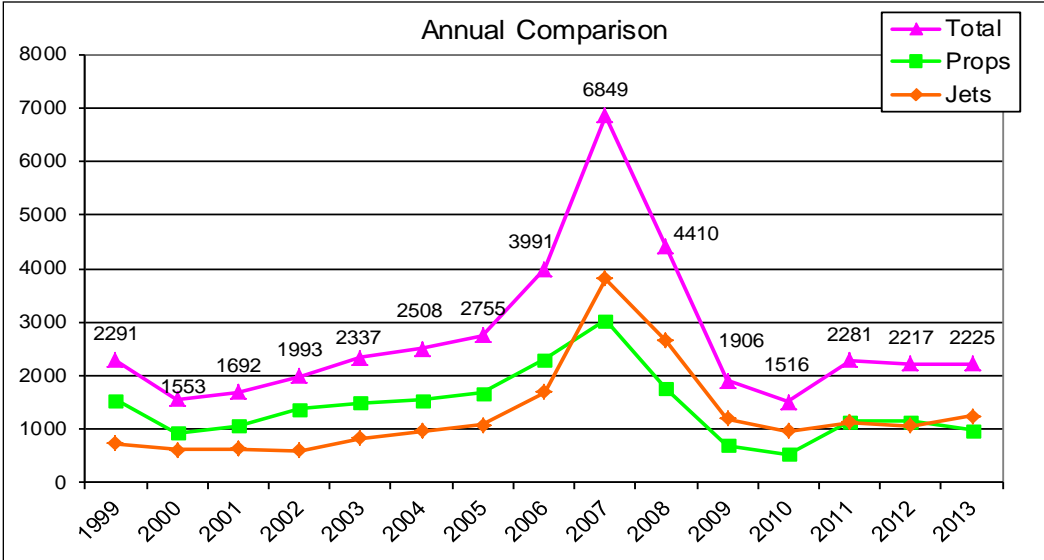
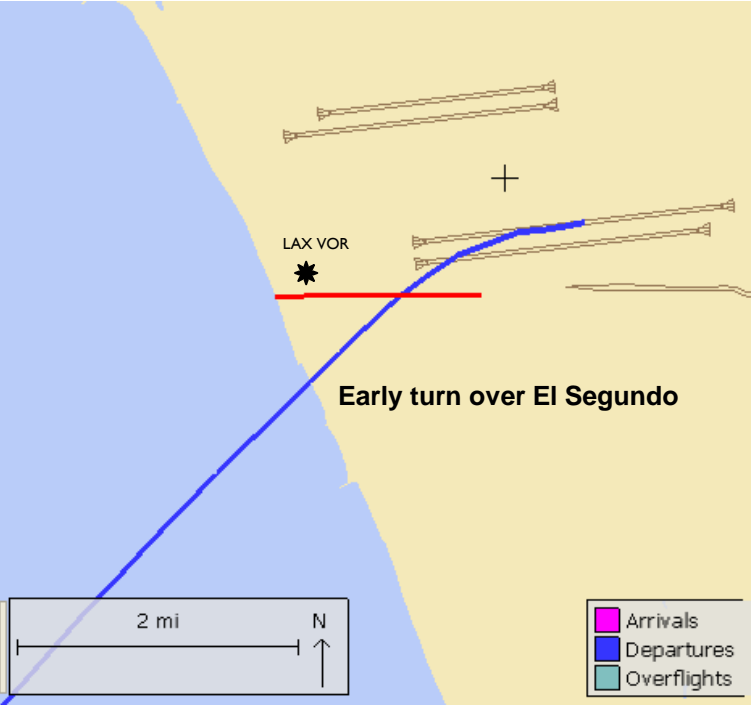
Early Turns to the North

Aircraft departing to the ocean turn early prior to reaching the shoreline

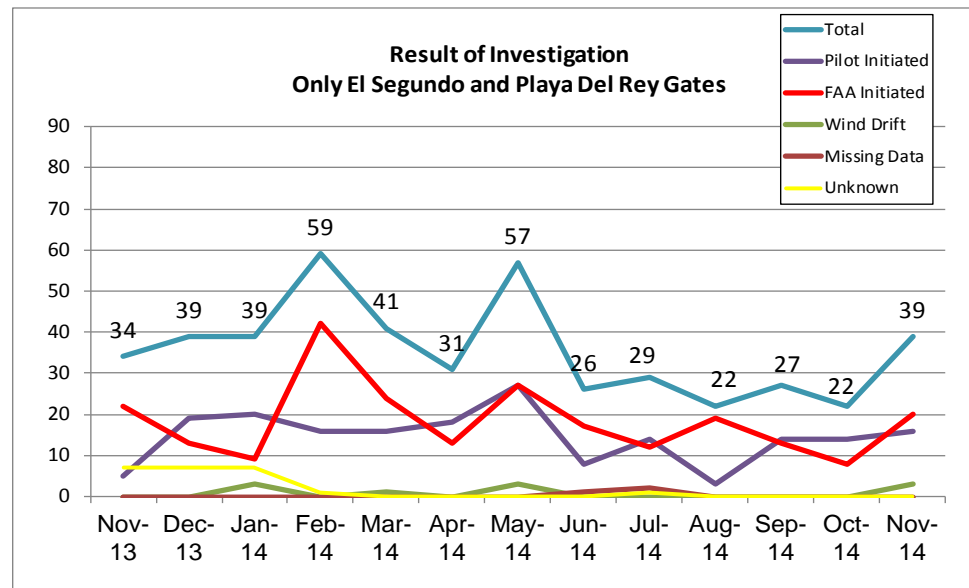
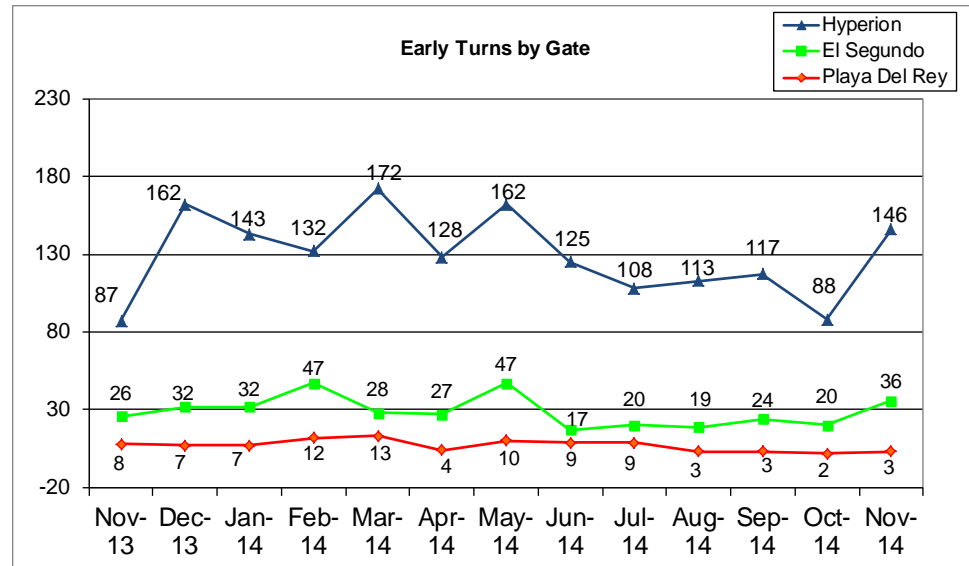
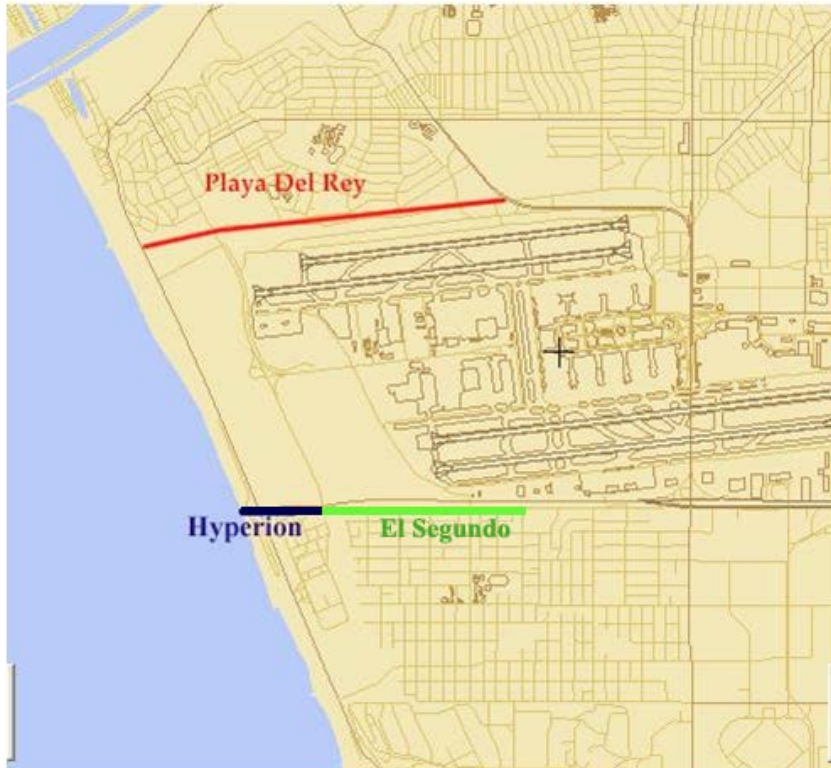


Early Turns to the South

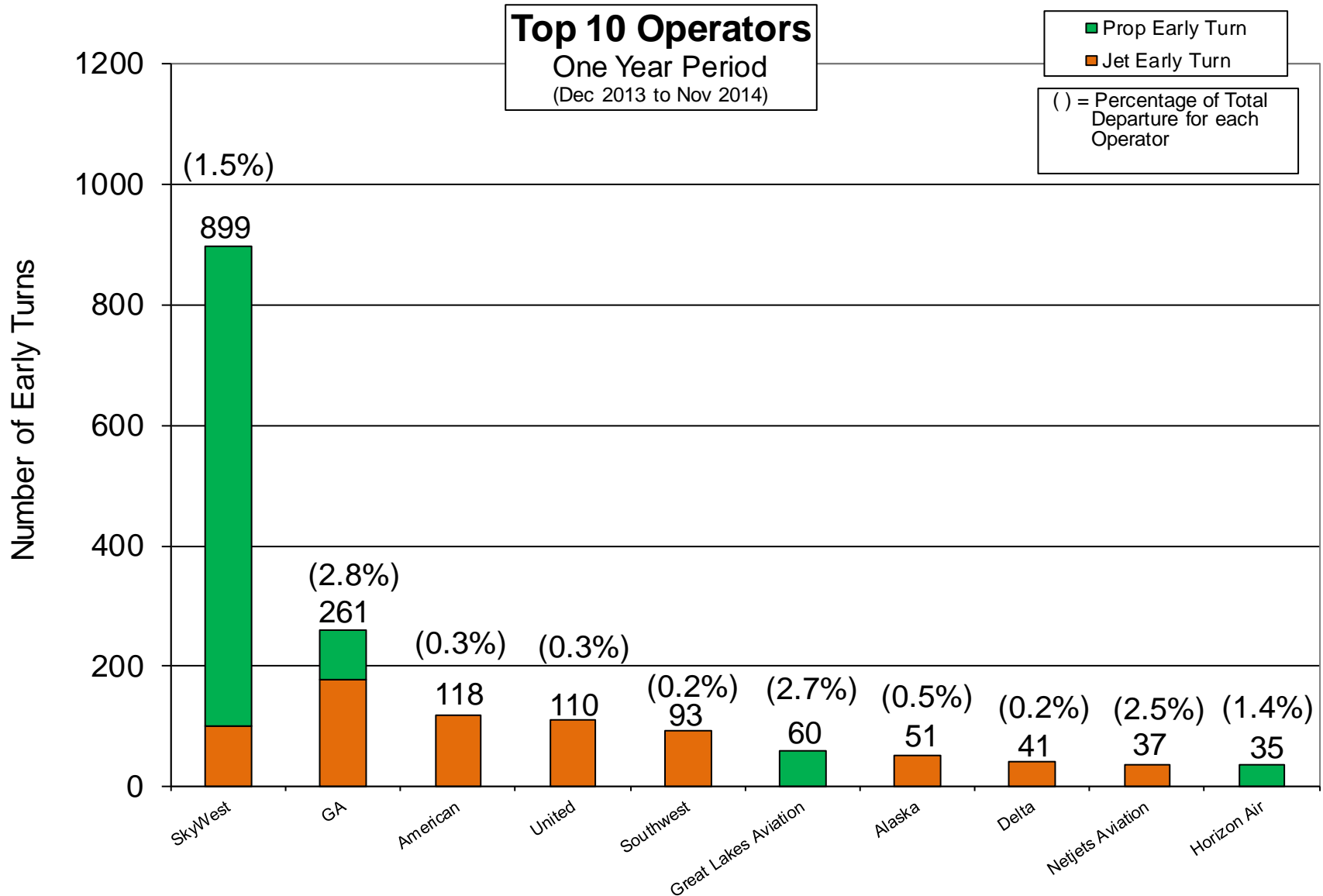
Aircraft departing to the ocean turn early prior to reaching the shoreline



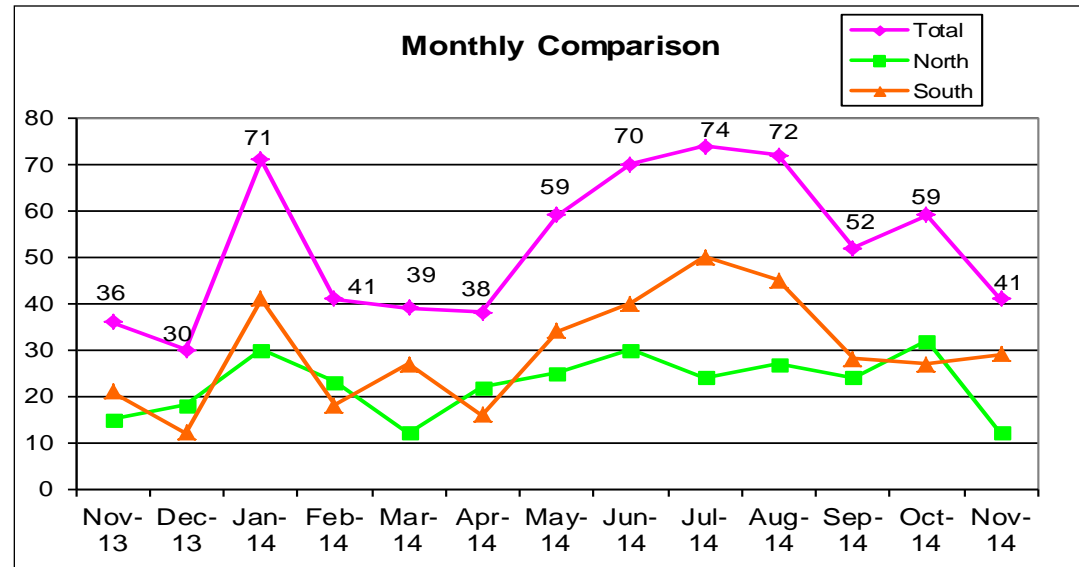
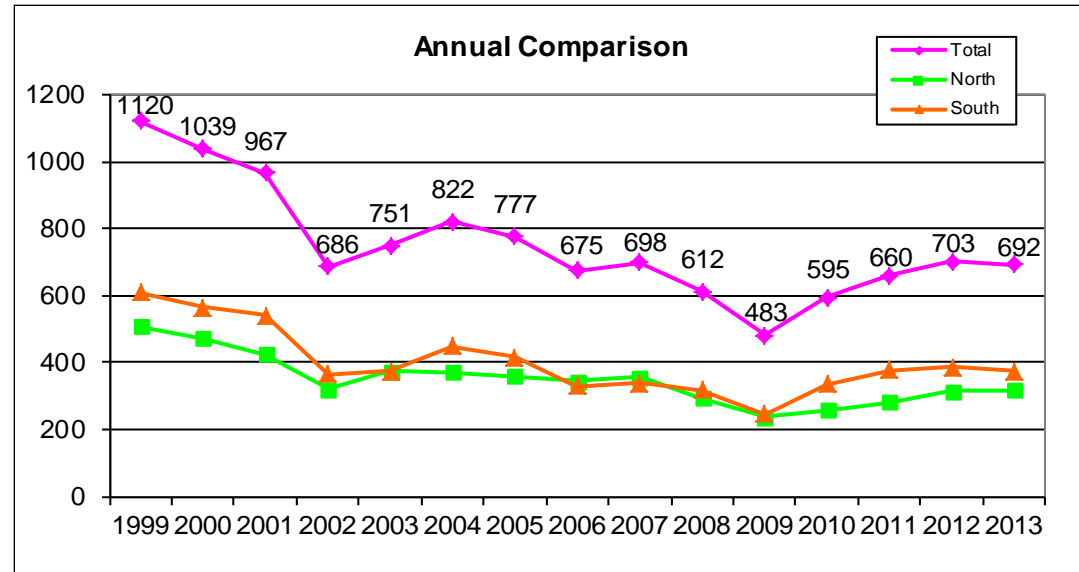
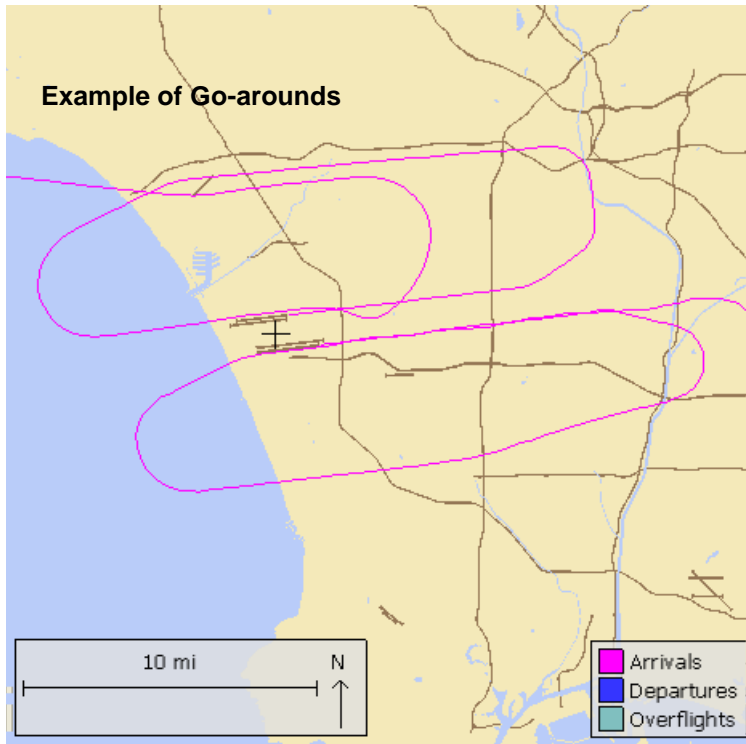
Early Turn Breakdown



Early Turns by Operator



Monitoring pilot or ATC initiated go-arounds or missed approaches

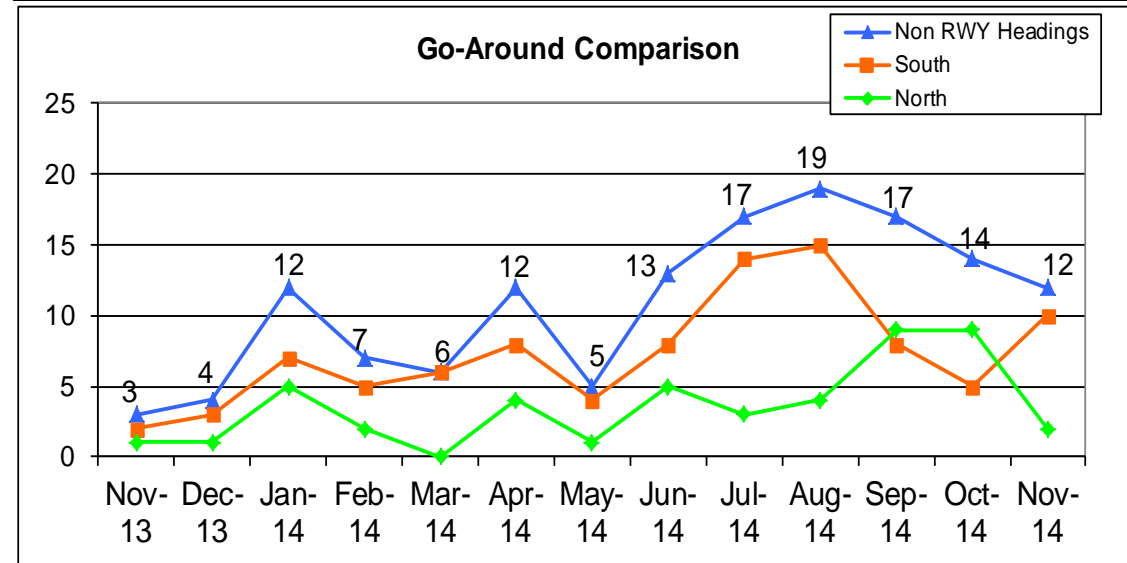
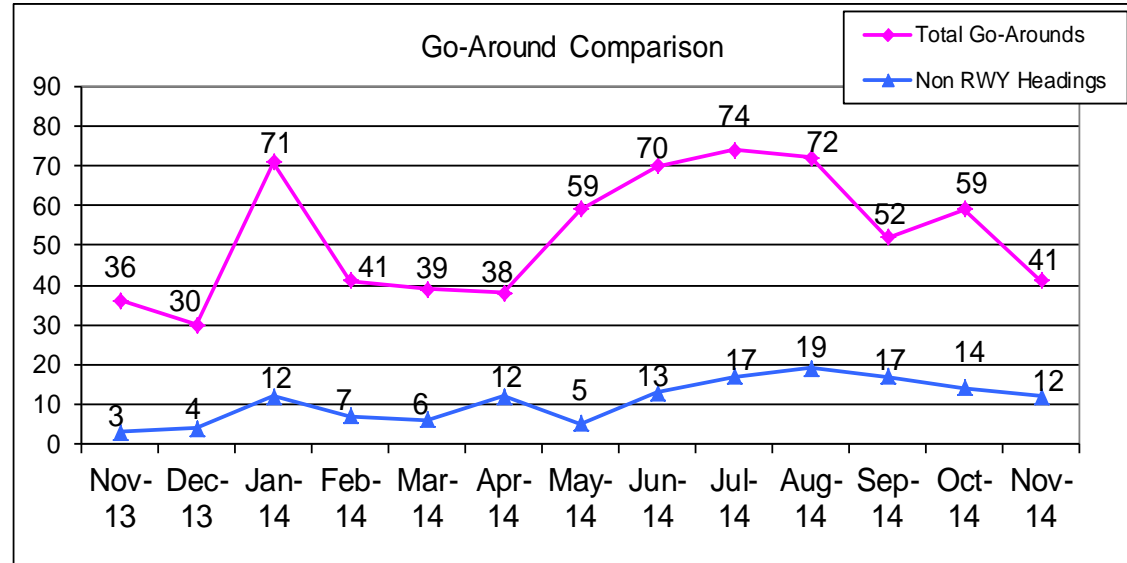
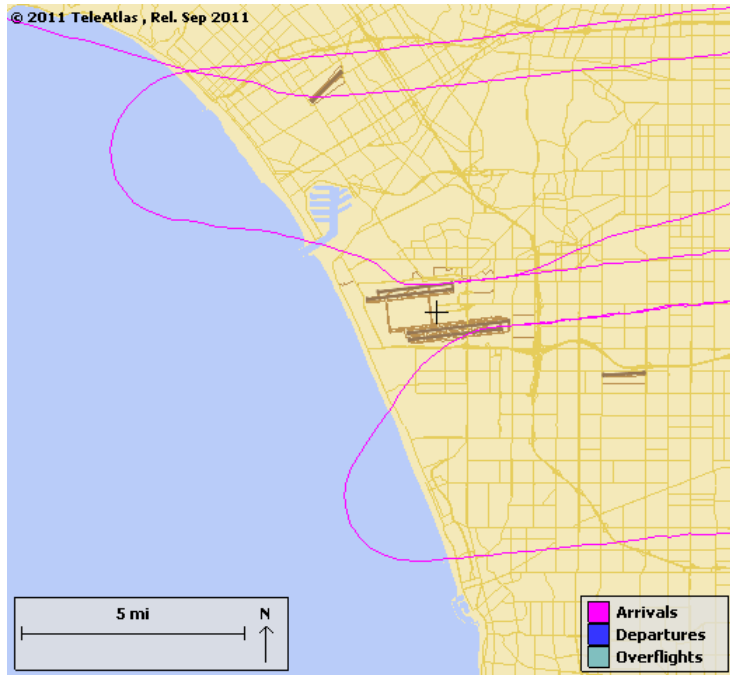


Reasons for Go-Arounds

		July 2014	November 2014
Pilot Initiated		33	22
	Too high or too fast	21	8
	Weather	2	6
	Aircraft Equipment (flaps, gears, avionics)	6	2
	Ground Equipment (Nav aids, lighting, etc)	0	1
	Other	2	3
	Overtake on Final/ Wake Turbulence	1	0
	Unknown	1	2
Controller Initiated		41	18
	In-trail Spacing	26	5
	Previous Arrival Traffic on Runway	9	9
	Runway Crossing Traffic	4	2
	Departure Traffic on Runway	1	2
	Other	1	0
Unknown		0	1
Total		74	41

Go-Arounds – Not Maintaining RWY Headings

Example of Go-Arounds not maintaining runway headings



Go-Arounds – By Operator

