

Construction Hot Topics

Week of December 28, 2020

1. Terminal 2 & 3: Construction Update

- Construction continues on both Terminals 2 & 3, including the structure pictured below that will become the future Terminal 2 / 3 Head House building upon completion
- The Head House will connect Terminals 2 & 3 and provide access to the APM's future Center CTA Station
- Lane restrictions are now in place on the Departures Level roadway while a temporary pedestrian walkway is built to maintain passenger traffic during construction; this walkway is scheduled to be in place through November 15, 2021



Terminal 2 / 3 Head House and Departures Level lane restrictions / temporary pedestrian walkway

A close-up view of the future ITF-West, which will connect with the Automated People Mover

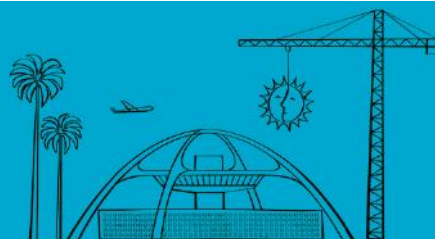


2. Intermodal Transportation Facility – West: Construction Update

- Construction continues on the Intermodal Transportation Facility – West (ITF-West), which is scheduled to open in 2021
- Upon completion, ITF-West will feature roughly 4,300 parking stalls for short and long-term parking, provide additional drop-off and pick-up locations, and connect to the Automated People Mover
- ITF-West is located between Westchester Parkway and 96th Street

Change is in the Air(port).

LAX WAY BETTER. REALLY.

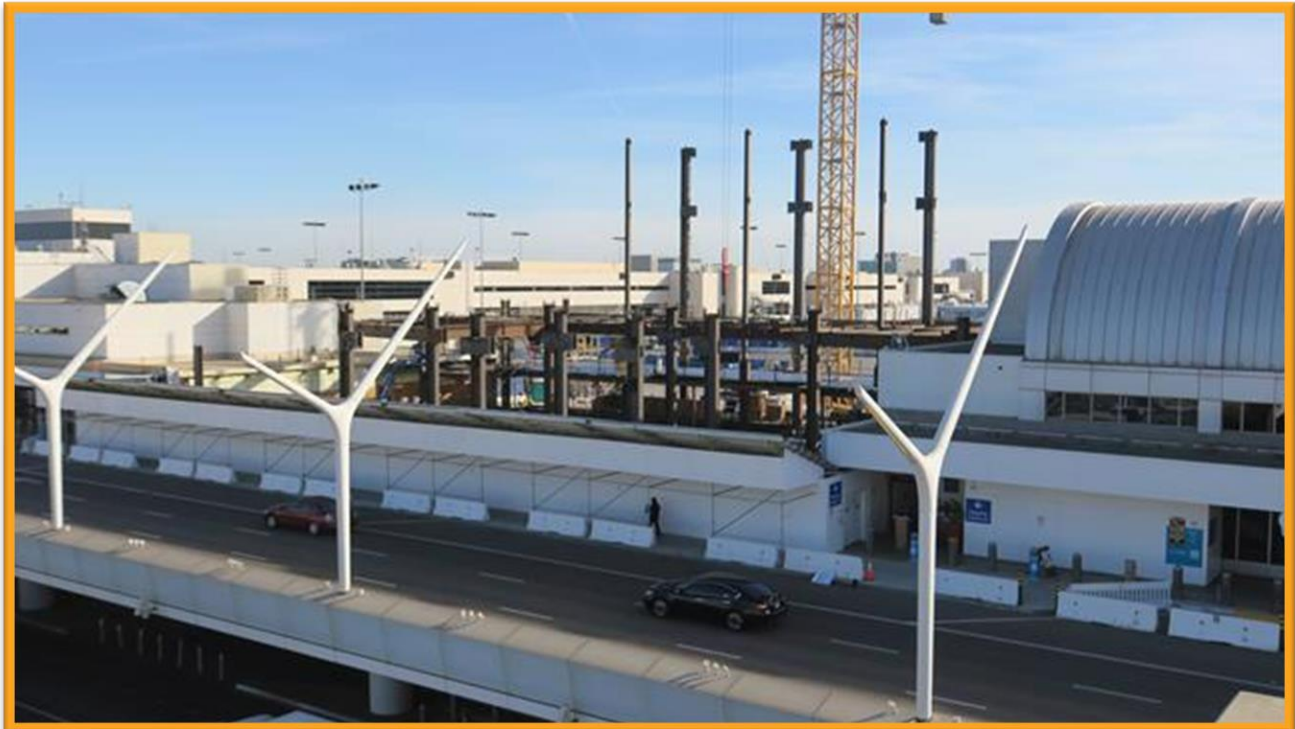


Construction Hot Topics

Week of December 28, 2020

3. Terminal 4.5 Core: Construction Update

- Construction is progressing on the Terminal 4.5 Core building between Terminals 4 & 5
- Structural steel is being erected with the help of an airside tower crane, both of which are visible from inside the Central Terminal Area
- Lane restrictions are in place on both the Departures and Arrivals Level roadways to facilitate temporary pedestrian walkways during construction; the Departures Level temporary pedestrian walkway can be seen in the photo below
- Upon completion, the Terminal 4.5 Core building will connect with the future APM West CTA Station



Terminal 4.5 structural steel, airside tower crane and Departures Level temporary pedestrian walkway

4. LAX Holiday Construction Moratorium

- The LAX Christmas / New Year Holiday Construction Moratorium will end today, Monday, January 4, at 9PM
- This moratorium was put in place to limit construction-related shutdowns, allowing for critical public-use areas, traffic lanes and utilities to remain available to guests during these peak holiday travel periods

Change is in the Air(port).

LAX WAY BETTER. REALLY.

