

# Construction Hot Topics

Week of November 21, 2022

## 1. LAX Holiday Construction Moratoriums

- Construction related utility and area shutdown restrictions in the LAX Airport and Central Terminal Area roadways are in effect through Tuesday, November 29, for the Thanksgiving Holiday Moratorium
- The LAX Christmas & New Year's Holiday Moratorium will take place Monday, December 19, 2022 through Tuesday, January 3, 2023
- Watch Construction Hot Topics for more information about potential impacts to guests during the holiday season

## 2. City of Los Angeles Public Streets Holiday Construction Moratoriums

- In addition to LAX's Holiday Construction Moratorium, the City of Los Angeles will implement holiday season public street closure restrictions during the following periods:
  - Thanksgiving: November 23 – 27, 2022
  - December Holidays: December 2 – 4, December 9 – 11, and December 16 – 25, 2022
- Watch Construction Hot Topics for updates about impacts to guests during these times

## 3. Thanksgiving Week Holiday Travel

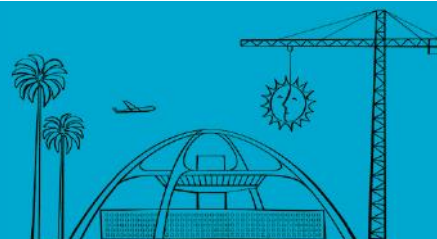
- With more than 200,000 passengers projected per day over the Thanksgiving Holiday period, guests are encouraged to plan ahead to ensure a smooth airport experience
- The aforementioned construction moratoriums have been implemented to lessen construction impacts to guests during this busier travel season; only limited amounts of work in non-impactful areas will be allowed
- LAX Parking Garages have seen historic use this year; guests are encouraged to pre-book a spot using [Parking.FlyLAX.com](https://www.flylax.com), utilize the [LAX Economy Parking Facility](#) and free terminal shuttle, or use alternate options such as the [LAX FlyAway](#) service
- More travel tips are available [here](#)

Travel stats courtesy of LAX Public Relations



Change is in the Air(port).

**LAX** WAY BETTER. REALLY.

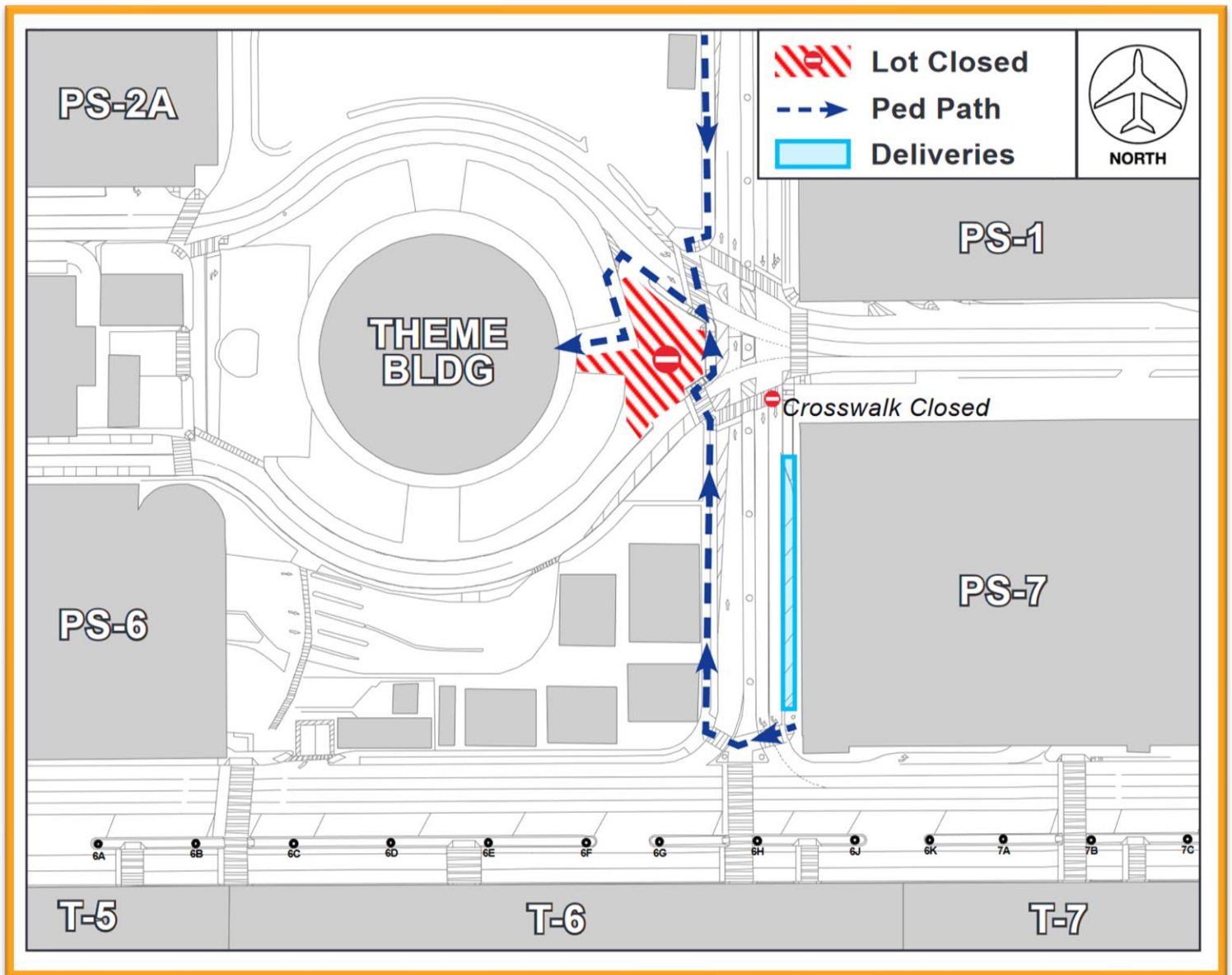


# Construction Hot Topics

Week of November 21, 2022

## 4. Theme Building Parking Lot & Sidewalk Restrictions

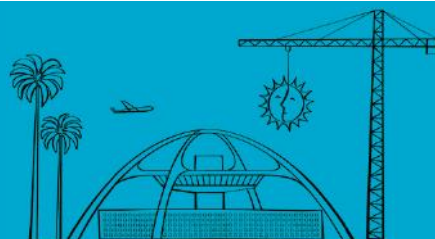
- To facilitate the installation of utilities, the Theme Building's east parking lot is closed through June 2023
- Pedestrian movements and path of travel will be maintained via detours
- Signage is in place to assist with wayfinding; travelers should always use caution when passing construction areas



*Pedestrians should follow posted signage when traveling around construction areas at the Theme Building*

Change is in the Air(port).

**LAX** WAY BETTER. REALLY.

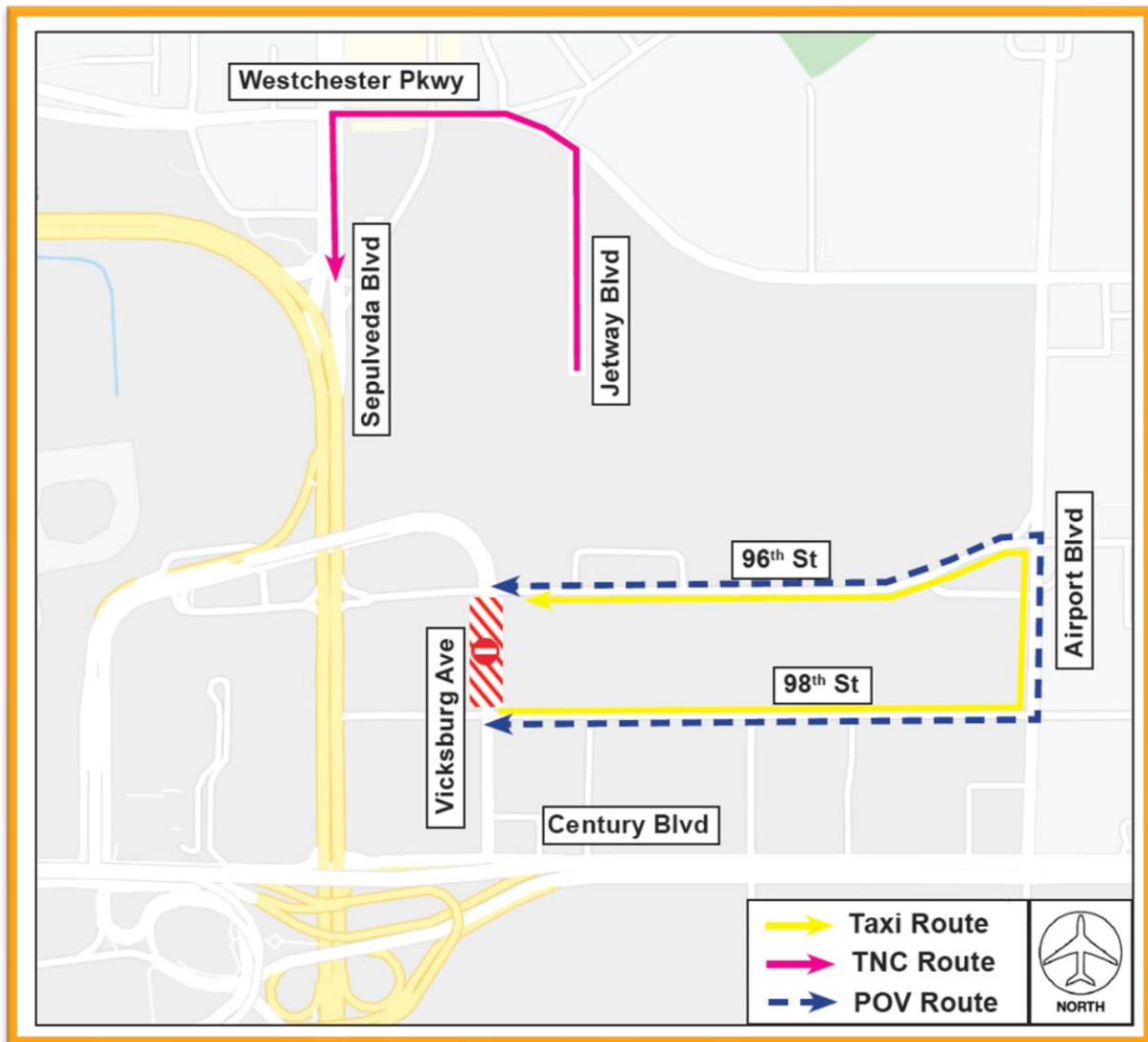


# Construction Hot Topics

Week of November 21, 2022

## 5. Vicksburg Avenue Closure: Impacts to POV, Taxi and TNC Routes

- To facilitate utility relocations for the Landside Access Modernization Program, Vicksburg Avenue between 96<sup>th</sup> & 98<sup>th</sup> Streets are closed nightly through Saturday, January 28, 2023
- Closures will start at 11PM with the roadway re-opened by 7AM
- Traffic will be maintained at all times via detours:
  - POVs maintained via Airport Blvd via 96th St or 98th St
  - Taxis maintained via 98th St to northbound Airport Blvd to westbound 96th St
  - TNCs maintained via northbound Jetway Blvd to westbound Westchester Pkwy to southbound Sepulveda Blvd



Detours will be in place to maintain traffic during nightly closures of Vicksburg Ave between 96<sup>th</sup> & 98<sup>th</sup> Streets

Change is in the Air(port).

**LAX** WAY BETTER. REALLY.

