

*Welcome...*



## **2015 Annual Storm Water Pollution Prevention Plan Training**

Environmental and Land Use Planning (ELUP) Division

# Agenda

- **Introductions**
- **Review: SWPPP**
- **Objective & Goals**
- **Requirement 1: PPT**
- **Requirement 2: Dry Weather Observation Form**
- **Requirement 3: Spill & Incident Reporting Form**
- **Requirement 4: Site Maps**



# Agenda

- **Requirement 5: Chemical Inventory Form**
- **Best Management Practices**
- **Consequences of Non-Compliance**
- **Summary**
- **Resources**
- **Q&A**



# Your LAWA Stormwater Team

4

## Storm Water Group

- **Matt Renaud – LAX Inspector**
  - 424-646-9044 [mrenaud@lawa.org](mailto:mrenaud@lawa.org)
- **Somvang Meksavanh – LAX/ONT Inspector**
  - 424-646-6492 [smeksavanh@lawa.org](mailto:smeksavanh@lawa.org)
- **Kislev Ang – VNY Inspector**
  - 424-646-6506 [kang@lawa.org](mailto:kang@lawa.org)



# Your LAWA Stormwater Team <sup>5</sup>

- LAWA Storm Water Program Page

– [https://www.lawa.org/  
welcome\\_lawa.aspx?id  
=1864](https://www.lawa.org/welcome_lawa.aspx?id=1864)



# Clean Water Act

- 1972, 33 U.S.C. § 1251-1387
- The primary federal statute that addresses water pollution in the United States.
- § 301 has prohibited against “the discharge of any pollutant by any person”.
- “Discharge of Pollutants” Definition
  - “any addition of any pollutant to navigable waters from any point source”



# Clean Water Act

- **1987 Amendment: §402(p) to include storm water discharges associated with municipal, and industrial activities.**



# Porter Cologne Act

- **CCR § 13000-16104**
- **Established the Basin Plan and subsequently, the Regional Water Quality Control Boards**
- **Mandates Water Quality Standards**





# The New NPDES Permit

- **Order 2014-0057-DWQ for Storm Water Discharges Associated with Industrial Activities**

Industrial General Permit Order

NATIONAL POLLUTANT DISCHARGE ELIMINATION SYSTEM (NPDES)  
GENERAL PERMIT FOR  
STORM WATER DISCHARGES  
ASSOCIATED WITH INDUSTRIAL ACTIVITIES

ORDER  
NPDES NO. CAS000001

|   |                      |
|---|----------------------|
| This Order was adopted by the State Water Resources Control Board on: | <b>April 1, 2014</b> |
| This Order shall become effective on:                                 | <b>July 1, 2015</b>  |
| This Order shall expire on:   | <b>June 30, 2020</b> |

IT IS HEREBY ORDERED that as of July 1, 2015 this Order supersedes Order 97-03-DWQ except for Order 97-03-DWQ's requirement to submit annual reports by July 1, 2015 and except for enforcement purposes. As of July 1, 2015, a Discharger shall comply with the requirements in this Order to meet the provisions contained in Division 7 of the California Water Code (commencing with section 13000) and regulations adopted thereunder, and the provisions of the federal Clean Water Act and regulations and guidelines adopted thereunder.

#### CERTIFICATION

I, Jeanine Townsend, Clerk to the Board, do hereby certify that this Order, including its fact sheet, attachments, and appendices is a full, true, and correct copy of an Order adopted by the State Water Resources Control Board, on April 1, 2014.

AYE: Chair Felicia Marcus  
Vice Chair Frances Spivy-Weber  
Board Member Tam M. Doduc  
Board Member Steven Moore

NAY: None

ABSENT: Board Member Dorene D'Adamo

ABSTAIN: None

*Jeanine Townsend*  
\_\_\_\_\_  
Jeanine Townsend  
Clerk to the Board

# Permit Requirements

- **Storm Water Pollution Prevention Plan (SWPPP)**
  - **Develop, Submit, Implement and Continuously Revise As Needed**



# Permit Requirements

## Storm Water Pollution Prevention Plan (SWPPP) Associated with Industrial Activities

for

The Los Angeles International Airport



**Facility Address:**  
1 World Way  
Los Angeles, California 90045

**Waste Discharge Identification (WDID):**  
419I004995

**Exceedance Response Action (ERA) Status:**  
Baseline

**Legally Responsible Person (LRP):**  
Los Angeles World Airports  
1 World Way  
Los Angeles, CA 90045  
Robert Freeman  
(424) 646-6474

**SWPPP Preparation Date**  
June 30, 2015

## Storm Water Pollution Prevention Plan (SWPPP) Associated with Industrial Activities

for

Ontario International Airport



**Facility Address:**  
1923 Avion Drive  
Ontario, California 91761

**Waste Discharge Identification (WDID):**  
8 36I004993

**Exceedance Response Action (ERA) Status:**  
Baseline

**Legally Responsible Person (LRP):**  
Los Angeles World Airports  
1 World Way  
Los Angeles, CA 90045  
Robert Freeman  
(424) 646-6474

**SWPPP Preparation Date:**  
June 26, 2015

## Storm Water Pollution Prevention Plan (SWPPP) Associated with Industrial Activities

for

Van Nuys Airport



**Facility Address:**  
16461 Sherman Way  
Van Nuys, California 91406

**Waste Discharge Identification (WDID):**  
4 19I004994

**Exceedance Response Action (ERA) Status:**  
Baseline

**Legally Responsible Person (LRP):**  
Los Angeles World Airports  
1 World Way  
Los Angeles, CA 90045  
Robert Freeman  
(424) 646-6474

**SWPPP Preparation Date**  
June 25, 2015



- LAWA Storm Water Program Page

– [https://www.lawa.org/  
welcome\\_lawa.aspx?id  
=1864](https://www.lawa.org/welcome_lawa.aspx?id=1864)



# Permit Requirements

- **Create a Pollution Prevention Team**
- **Employee Training**
- **Prepare a Site Map**
- **Potential Pollutant Sources Assessment & Elimination**
- **Best Management Practices (BMPs)**
- **Track & Maintain Records**



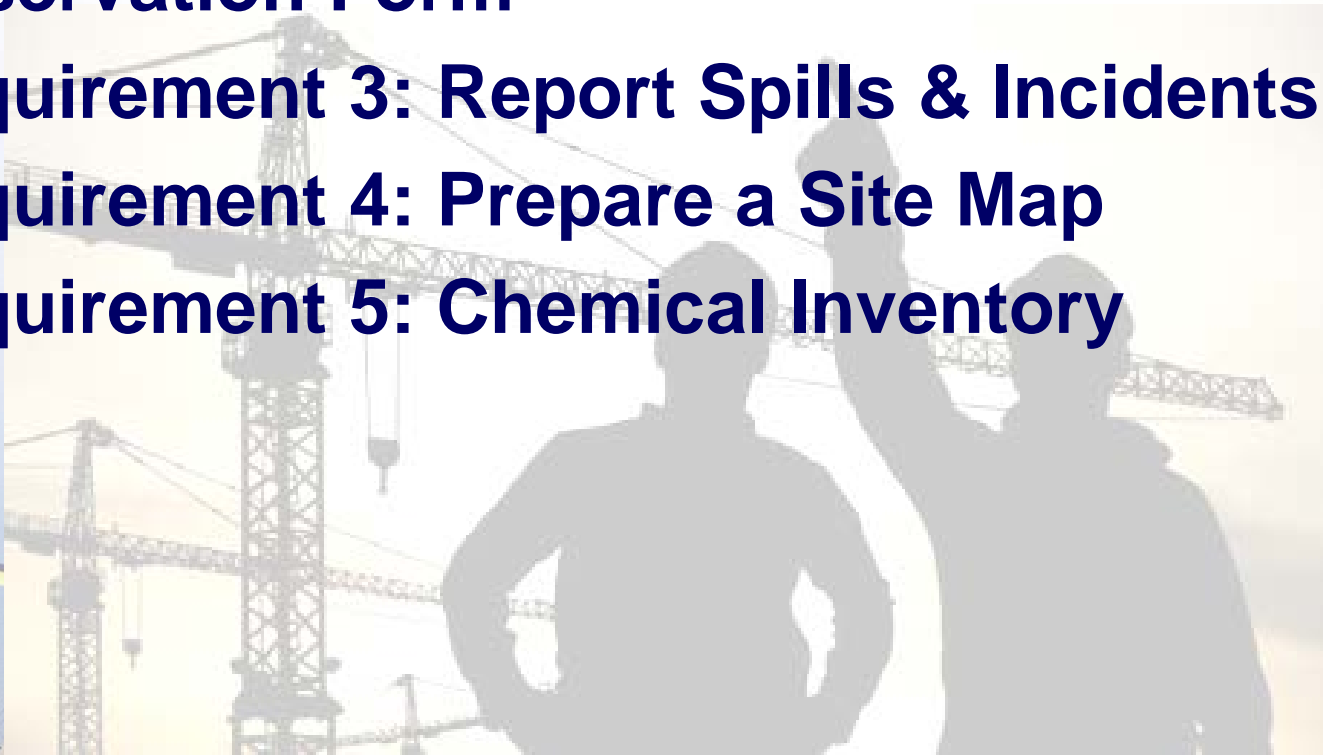
# Objectives for Today's Training<sup>14</sup>

**To know WHAT you need to do to comply with the new NPDES Industrial General Permit and HOW to do it correctly.**



# Goals for Today's Training

- **Requirement 1: Pollution Prevention Team**
- **Requirement 2: Monthly Dry Weather Observation Form**
- **Requirement 3: Report Spills & Incidents**
- **Requirement 4: Prepare a Site Map**
- **Requirement 5: Chemical Inventory**



# Requirement 1: Pollution Prevention Team (PPT)





- **Two People**
  - **The Primary PPT Member**
    - **Name, Title, Phone Number, Email**
  - **The Alternate PPT Member**
    - **Name, Title, Phone Number, Email**



# PPT Roles & Duties

- **Prepare a Site Map**
- **Implement Best Management Practices (BMPs)**
- **Conduct Monthly Dry Weather Observations**
- **Potential Pollutant Sources**
  - Update Chemical Inventory
  - Report Spills & Incidents
  - Document Non- Storm Water Discharges (NSWDs)
- **Employee Training**

# Requirement 2: Monthly Dry Weather Observation



# Monthly Dry Weather Observation<sup>20</sup>



MONTH AND YEAR \_\_\_\_\_

## Monthly Dry Weather Visual Observation Form

(Form due by the 5th of the month following the observation month; submit to stormwater@lawa.org)

Facility Name: \_\_\_\_\_ **LAWA Follow-up Requested?**

Facility Address: \_\_\_\_\_

Observer Name: \_\_\_\_\_ PPT  or Alternate  Phone/email: \_\_\_\_\_

Signature: \_\_\_\_\_ Change in PPT or Alternate? Yes  Observation Date/Time: \_\_\_\_\_

- Are all impervious surfaces assessed regularly for spills, stains and other debris? Yes  or No
- Has there been a change in Onsite Chemical Inventory? Yes  or No  (If Yes, complete and include Stored Material Checklist)
- Has a spill occurred since the previous observation? Yes  or No
- Was a Spill Incident Report Form submitted? Yes  or No  (If "no", complete and include Spill Incident Report Form)
- Is Facility Map up to date? Yes  No ; Is Spill Response Plan up to date? No  or Yes

### Part I. Non-Storm Water Discharge (NSWD) Observations. (Check All Applicable)

| Discharge Type | A. Discharge Observed?        | B. Evidence of prior/current/potential source of NSWD and/or source? (Y/N) | C. Discharge occurred in the facility? (Y/N) | D. Describe Pollutant Characteristics (Check If Present) |           |                   |      |       | E. BMPs in Place? (Y/N) | F. Dates of Discharge, BMPs Utilized, Describe Discharge Observation. Include supplemental photos if applicable. |
|----------------|-------------------------------|--|--|--|-----------|-------------------|------|-------|-------------------------|--|
|                |                               |  |  | Sheen  | Turbidity | Floating Material | Odor | Other |                         |  |
| AUTHORIZED     | Fire Hydrant Flushing         |  |  |  |           |                   |      |       |                         |  |
|                | Potable Water Sources         |  |  |  |           |                   |      |       |                         |  |
|                | Drinking Fountain Water       |  |  |  |           |                   |      |       |                         |  |
|                | Atmospheric Condensates       |  |  |  |           |                   |      |       |                         |  |
|                | Irrigation Drainage/Landscape |  |  |  |           |                   |      |       |                         |  |
|                | Others                        |  |  |  |           |                   |      |       |                         |  |
| UNAUTHORIZED   | Rinse/Wash Water              |  |  |  |           |                   |      |       |                         |  |
|                | Improperly Disposed/ Dumped   |  |  |  |           |                   |      |       |                         |  |
|                | Spilled Material              |  |  |  |           |                   |      |       |                         |  |
|                | Leaked Material               |  |  |  |           |                   |      |       |                         |  |
|                | Illicit Connection            |  |  |  |           |                   |      |       |                         |  |
|                | Possible Illicit Connection   |  |  |  |           |                   |      |       |                         |  |
| Food Waste     |                               |  |  |  |           |                   |      |       |                         |  |
| Other          |                               |  |  |  |           |                   |      |       |                         |  |

### Comments and Observations:

\_\_\_\_\_

\_\_\_\_\_

\_\_\_\_\_

\_\_\_\_\_

\_\_\_\_\_

\_\_\_\_\_



# Monthly Dry Weather Observation<sup>21</sup>

- Facility Information

## Monthly Dry Weather Visual Observation Form

(Form due by the 5th of the month following the observation month; submit to [stormwater@lawa.org](mailto:stormwater@lawa.org))

|                         |   |
|-------------------------|---|
| Facility Name: _____    | LAWA Follow-up Requested? <input type="checkbox"/>                                    |
| Facility Address: _____ |   |
| Observer Name: _____    | PPT <input type="checkbox"/> or Alternate <input type="checkbox"/> Phone/email: _____ |
| Signature: _____        | Change in PPT or Alternate? Yes <input type="checkbox"/> Observation Date/Time: _____ |



# Monthly Dry Weather Observation<sup>22</sup>

- **General Compliance Questions**

Are all impervious surfaces assessed regularly for spills, stains and other debris? Yes  or No

Has there been a change in Onsite Chemical Inventory? Yes  or No  (If Yes, complete and include Stored Material Checklist)

Has a spill occurred since the previous observation? Yes  or No

Was a Spill/Incident Report Form submitted? Yes  or No  (If "no", complete and include Spill/Incident Report Form)

Is Facility Map up to date? Yes  No ; Is Spill Response Plan up to date? No  or Yes



# Monthly Dry Weather Observation<sup>23</sup>

- **Non-Storm Water Discharge (NSWD)**
  - **Authorized**

**Part I. Non-Storm Water Discharge (NSWD) Observations. (Check All Applicable)**

| Discharge Type  | A. Discharge Observed? | B. Evidence of prior/ current/ potential/ source of NSWD and/or source? (Y/N) | C. Discharge occurred in the facility? (Y/N) | D. Describe Pollutant Characteristics (Check If Present) |           |                   |      |       | E. BMPs In Place? (Y/N) | F. Dates of Discharge, BMPs Utilized, Describe Discharge Observation. Include supplemental photos if applicable. |
|---|------------------------|---|--|--|-----------|-------------------|------|-------|-------------------------|--|
|   |                        |   |  | Sheen  | Turbidity | Floating Material | Odor | Other |                         |  |
| AUTHORIZED<br>Fire Hydrant<br>Flushing<br>Potable Water<br>Sources<br>Drinking Fountain<br>Water<br>Atmospheric<br>Condensates<br>Irrigation Drainage/<br>Landscape<br>Others |                        |   |  |  |           |                   |      |       |                         |  |
|   |                        |   |  |  |           |                   |      |       |                         |  |
|   |                        |   |  |  |           |                   |      |       |                         |  |
|   |                        |   |  |  |           |                   |      |       |                         |  |
|   |                        |   |  |  |           |                   |      |       |                         |  |
|   |                        |   |  |  |           |                   |      |       |                         |  |
|   |                        |   |  |  |           |                   |      |       |                         |  |

# Monthly Dry Weather Observation<sup>24</sup>

- **Non-Storm Water Discharge (NSWD)**  
– **Unauthorized**

| Discharge Type              | A.<br>Discharge<br>Observed? | B.<br>Evidence<br>of prior/<br>current/<br>potential/<br>source of<br>NSWD<br>and/or<br>source?<br>(Y/N) | C.<br>Discharge<br>occured in<br>the facility?<br>(Y/N) | D. Describe Pollutant Characteristics (Check If Present) |           |                   |      |       | E.<br>BMPs<br>In<br>Place?<br>(Y/N) | F. Dates of Discharge, BMPs Utilized, Describe Discharge Observation. Include supplemental photos if applicable. |
|-----------------------------|------------------------------|--|---|--|-----------|-------------------|------|-------|-------------------------------------|--|
|                             |                              |  |   | Sheen  | Turbidity | Floating Material | Odor | Other |                                     |  |
| Rinse/Wash Water            |                              |  |   |  |           |                   |      |       |                                     |  |
| Improperly Disposed/        |                              |  |   |  |           |                   |      |       |                                     |  |
| Spilled Material            |                              |  |   |  |           |                   |      |       |                                     |  |
| Leaked Material             |                              |  |   |  |           |                   |      |       |                                     |  |
| Illicit Connection          |                              |  |   |  |           |                   |      |       |                                     |  |
| Possible Illicit Connection |                              |  |   |  |           |                   |      |       |                                     |  |
| Food Waste                  |                              |  |   |  |           |                   |      |       |                                     |  |
| Other                       |                              |  |   |  |           |                   |      |       |                                     |  |

UNAUTHORIZED



# Monthly Dry Weather Observation<sup>25</sup>

- **Comments and Observation**

| Comments and Observations |
|---------------------------|
|                           |
|                           |
|                           |
|                           |
|                           |
|                           |
|                           |

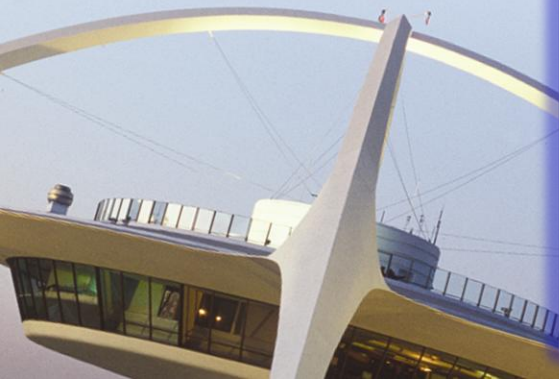


# Monthly Dry Weather Observation <sup>26</sup>

- Best Management Practices

Part II BMP Observation, Implementation, Deficiencies and Corrective Action:

| Description of BMP:<br>(Reference BMP Fact Sheet Number); SWPPP Table 4.1 shows summary of the BMPs for each airport (List below shows BMPs implemented at LAWA and may not be airport specific.) | A. Facility BMPs (Check All Applicable); Previously reported BMPs are located in Table 4.2 of the SWPPP | B. Change in BMP use on facility? <b>New</b> or <b>Eliminated</b> Use | C. Implementation Location (Check all Applicable) |                                     |                        |   | D. Implementation Frequency<br><br>Routine (Describe: Daily, Weekly, Monthly, Others, or As Needed) | E. BMP Deficient?<br><br><b>Yes</b> (describe in "Comments") or <b>No</b> or Not Applicable - <b>NA</b> | F. BMP Comments (Corrective Actions); Attach Any Supporting Photos (including description) |
|---|---|---|---|-------------------------------------|------------------------|---|---|---|--|
|   |   |   | Outdoor Industrial Activities Areas               | Outdoor Equipment and Storage Areas | Chemical Storage Areas | Others (Describe all other potential source of industrial pollutants) |   |   |  |
| Elimination of NSWD (LAWA SC1); <b>Illicit Connection</b>   |   |   |   |                                     |                        |   |   |   |  |
| Aircraft, Ground Vehicle, and Equipment Maintenance (LAWA SC2)  |   |   |   |                                     |                        |   |   |   |  |
| Aircraft, Vehicle and Equipment Fueling (LAWA SC3)  |   |   |   |                                     |                        |   |   |   |  |
| Aircraft, Vehicle and Equipment Washing (SC4)   |   |   |   |                                     |                        |   |   |   |  |
| Aircraft Deicing (SC5)  |   |   |   |                                     |                        |   |   |   |  |
| Outdoor Material Handling (SC6)   |   |   |   |                                     |                        |   |   |   |  |
| Outdoor Storage of Significant Material (SC7); <b>Storage Traffic and Uncovered Outdoor Storage</b>   |   |   |   |                                     |                        |   |   |   |  |
| Waste Handling and Disposal (SC8); <b>Housekeeping and Uncovered Dumpsters</b>  |   |   |   |                                     |                        |   |   |   |  |
| Building and Grounds Maintenance (SC9); <b>Housekeeping</b>   |   |   |   |                                     |                        |   |   |   |  |
| Storm Water Pollution Prevention (SC10); <b>Employee awareness training and recordkeeping Education</b>   |   |   |   |                                     |                        |   |   |   |  |
| Literary Service Operations (SC11)  |   |   |   |                                     |                        |   |   |   |  |
| Outdoor Washdown/Sweeping (SC12); <b>Stains on pavement/concrete</b>  |   |   |   |                                     |                        |   |   |   |  |
| Fire Fighting Foam Discharge (SC13)   |   |   |   |                                     |                        |   |   |   |  |
| Potable Water System Flushing (SC14)  |   |   |   |                                     |                        |   |   |   |  |
| Runway Rubber Removal (SC15)  |   |   |   |                                     |                        |   |   |   |  |
| Oil Water Separators (LAWA TC1)   |   |   |   |                                     |                        |   |   |   |  |
| Emergency Spill Cleanup Plan (LAWA SRI); <b>Spill kit and Plan Posted</b>   |   |   |   |                                     |                        |   |   |   |  |
| Contaminated or Erodible Surfaces (CASQA SC-40)   |   |   |   |                                     |                        |   |   |   |  |
| Drainage System Maintenance (CASQA SC-44)   |   |   |   |                                     |                        |   |   |   |  |
| Wet Pond (CASQA - TC-20)  |   |   |   |                                     |                        |   |   |   |  |
| Extended Detention Basin (CASQA TC-22)  |   |   |   |                                     |                        |   |   |   |  |
| Media Filter (CASQA TC-40)  |   |   |   |                                     |                        |   |   |   |  |
| Gravity Separator (CASQA MP-61)   |   |   |   |                                     |                        |   |   |   |  |



# Monthly Dry Weather Observation <sup>27</sup>

## • Best Management Practices

| <p>Description of BMPs<br/>(Reference BMP Fact Sheet Number); SWPPP Table 4.1 shows summary of the BMPs for each airport (List below shows BMPs implemented at LAWA and may not be airport specific.)</p> | <p>Description of BMPs<br/>(Reference BMP Fact Sheet Number); SWPPP Table 4.1 shows summary of the BMPs for each airport (List below shows BMPs implemented at LAWA and may not be airport specific.)</p> | <p>Description of BMPs<br/>(Reference BMP Fact Sheet Number); SWPPP Table 4.1 shows summary of the BMPs for each airport (List below shows BMPs implemented at LAWA and may not be airport specific.)</p> |
|---|---|---|
| <p>Elimination of NSWD (LAWA SC1); <b>Illicit Connection</b></p>  | <p>Building and Grounds Maintenance (SC9); <b>Housekeeping</b></p>  | <p>Emergency Spill Cleanup Plan (LAWA SRI); <b>Spill kits and Plan Posted</b></p>   |
| <p>Aircraft, Ground Vehicle, and Equipment Maintenance (LAWA SC2)</p>   | <p>Storm Water Pollution Prevention (SC10); <b>Employee awareness training and recordkeeping</b></p>  | <p>Contaminated or Erodible Surfaces (CASQA SC-40)</p>  |
| <p>Aircraft, Vehicle and Equipment Fueling (LAWA SC3)</p>   | <p><b>Education</b></p>   | <p>Drainage System Maintenance (CASQA SC-44)</p>  |
| <p>Aircraft, Vehicle and Equipment Washing (SC4)</p>  | <p>Lavatory Service Operations (SC11)</p>   | <p>Wet Pond (CASQA - TC-20)</p>   |
| <p>Aircraft Deicing (SC5)</p>   | <p>Outdoor Washdown/Sweeping (SC12); <b>Stains on pavement/concrete</b></p>   | <p>Extended Detention Basin (CASQA TC-22)</p>   |
| <p>Outdoor Material Handling (SC6)</p>  | <p>Fire Fighting Foam Discharge (SC13)</p>  | <p>Media Filter (CASQA TC-40)</p>   |
| <p>Outdoor Storage of Significant Material (SC7); <b>Storage Tanks and Uncovered Outdoor Storage</b></p>  | <p>Potable Water System Flushing (SC14)</p>   | <p>Gravity Separator (CASQA MP-51)</p>  |
| <p>Waste Handling and Disposal (SC8); <b>Housekeeping and Uncovered Dumpsters</b></p>   | <p>Runway Rubber Removal (SC15)<br/>Oil/Water Separators (LAWA TC1)</p>   |   |



# Monthly Dry Weather Observation<sup>28</sup>



LAX

Los Angeles World Airports

Rules and Regulations

## LOS ANGELES WORLD AIRPORTS

SC1

### ELIMINATION OF NON-STORM WATER DISCHARGES TO STORM DRAINS

**PURPOSE:**

**Existing discharges:** Eliminate non-storm water discharges to the storm water collection system. Non-storm water discharges can be classified as follows: 1) *Activity-based* (subtle), and 2) *Overt* (hard pipe connection). Activity-based non-storm water discharges may include: wash water, deicing fluids, and spillage. Overt non-storm water discharges may include: process wastewater, treated cooling water, and sanitary wastewater.

**Prevention of illicit connections:** Prevent improper physical connections to the storm drain system from sanitary sewers, floor drains, industrial process discharge lines, and wash racks through education, developing project approval conditions, and performing both construction phase and post-construction inspections.

**GENERAL APPROACH:**

**Identification of Activity-Based (Subtle) Discharges:**

The following techniques may be used to identify activity-based non-storm water discharges to the storm water collection system:

- Perform frequent activity inspections to identify non-storm water discharges -

**TARGETED ACTIVITIES**

All Maintenance  
 All Fueling  
 All Washing  
 Equipment Cleaning  
 Cargo Handling  
 All Storage  
 Painting/Stripping  
 Floor Washdowns  
 Aircraft Deicing/Anti-Icing  
 Garbage Collection  
 Aircraft Lavatory Service  
 Fire Fighting Equip. Testing  
 Potable Water System Flush  
 Runway Rubber Removal

**TARGETED POLLUTANTS**

Oil and Grease  
 Vehicle Fluids  
 Fuel  
 Solvents/Cleaning Sol.  
 Deicing/Anti-Icing Fluid



Los Angeles  
World Airports

# Monthly Dry Weather Observation <sup>29</sup>

| Description of BMPs<br>(Reference BMP Fact Sheet Number); SWPPP Table 4.1 shows summary of the BMPs for each airport (List below shows BMPs implemented at LAWA and may not be airport specific.) | A. Facility BMPs<br>(Check All Applicable); Previously reported BMPs are located in Table 4.2 of the SWPPP | B. Change in BMP use on facility? <u>N</u> ew or <u>E</u> liminated Use | C. Implementation Location (Check all Applicable) |  |                        |   | D. Implementation Frequency<br><br>Routine (Describe: <u>D</u> aily, <u>W</u> eekly, <u>M</u> onthly, <u>O</u> thers, or <u>A</u> s Needed) | E. BMP Deficient?<br><br><u>Y</u> es (describe in "Comments") or <u>N</u> o or Not Applicable - <u>NA</u> | F. BMP Comments (Corrective Actions); Attach Any Supporting Photos (including description) |
|---|--|---|---|--|------------------------|---|---|---|--|
|   |  |   | Outdoor Industrial Activities Areas               | Outdoor Industrial Equipment and Storage Areas | Chemical Storage Areas | Others (Describe all other potential source of industrial pollutants) |   |   |  |
| Elimination of NSWDC (LAWA SC1); <b>Illicit Connection</b>  |  |   |   |  |                        |   |   |   |  |



# Monthly Dry Weather Observation

30

|  |   |   |
|--|---|---|
| <p><b>Description of BMPs</b><br/>(Reference BMP Fact Sheet Number); SWPPP Table 4.1 shows summary of the BMPs for each airport (List below shows BMPs implemented at LAWA and may not be airport specific.)</p> | <p><b>A. Facility BMPs</b><br/>(Check All Applicable); Previously reported BMPs are located in Table 4.2 of the SWPPP</p> | <p><b>B. Change in BMP use on facility? <u>N</u>ew or <u>E</u>liminated Use</b></p> |
| <p><b>Elimination of NSWDC (LAWA SC1); <u>Illicit Connection</u></b></p>   |   |   |

# Monthly Dry Weather Observation <sup>31</sup>

| Description of BMPs<br>(Reference BMP Fact Sheet<br>Number); SWPPP Table 4.1<br>shows summary of the BMPs<br>for each airport (List below<br>shows BMPs implemented at<br>LAWA and may not be<br>airport specific.) | C. Implementation Location (Check all Applicable) |  |                              |   |
|---|---|--|------------------------------|---|
|   | Outdoor<br>Industrial<br>Activities<br>Areas      | Outdoor<br>Industrial<br>Equipmen<br>t and<br>Storage<br>Areas | Chemical<br>Storage<br>Areas | Others (Describe<br>all other potential<br>source of<br>industrial<br>pollutants) |
| Elimination of NSWD<br>(LAWA SC1); <b>Illicit<br/>Connection</b>  |   |  |                              |   |

# Monthly Dry Weather Observation <sup>32</sup>

|  |  |   |  |
|--|--|---|--|
| <p><b>Description of BMPs</b><br/>(Reference BMP Fact Sheet Number); SWPPP Table 4.1 shows summary of the BMPs for each airport (List below shows BMPs implemented at LAWA and may not be airport specific.)</p> | <p><b>D.</b><br/><b>Implementatio</b><br/><b>n Frequency</b></p>   | <p><b>E. BMP</b><br/><b>Deficient?</b></p>  | <p><b>F. BMP Comments</b> (Corrective Actions); Attach Any Supporting Photos (including description)</p> |
| <p><b>Elimination of NSWD</b><br/>(LAWA SC1); <b>Illicit</b><br/><b>Connection</b></p>   | <p><b>Routine</b><br/>(Describe:<br/><b><u>D</u>aily, <u>W</u>eekly,<br/><u>M</u>onthly,<br/><u>O</u>thers, or <u>A</u>s<br/>Needed)</b></p> | <p><b><u>Y</u>es</b> (describe<br/>in<br/>"Comments"<br/>) or <b><u>N</u>o</b> or<br/>Not<br/>Applicable -<br/><b><u>NA</u></b></p> |  |



# Monthly Dry Weather Observation<sup>33</sup>

Email to

[stormwater@lawa.org](mailto:stormwater@lawa.org)

**On the 5<sup>th</sup>**  
**of the following month**

# Break – 10 Minutes



# Requirement 3: Spills & Incident Reporting

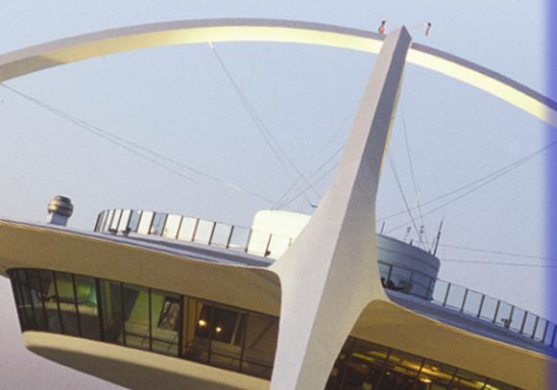


# Spills & Incidents

- **Prevent Spills**
  - SOPs
  - BMPs
  - Training
- **Clean Up Immediately**
  - **Small Spills: Train Employees in spill and leak response**
  - **Larger Spills: Report to ARCC, Ops or LAFD**
- **Report to Proper Authority/Agency**



# Spills & Incidents



| LAX<br>Los Angeles World Airports  |   | SPILL/INCIDENT REPORT FORM  |   |
|--|---|---|---|
| <p><b>NOTIFY ARCC ASAP @ [424] 646-LAWA WHEN SPILL ENTERS STORM DRAIN</b></p> <p><b>SUBMIT FORM TO STORMWATER@LAWA.ORG NO LATER THAN 24 HOURS AFTER SPILL OCCURRED</b></p>   |   |   |   |
| <p><b>Report:</b> Spills over 1 gal in volume (1 gallon could cover more than 60 square feet).<br/>                 Any product enters into a storm drain.<br/>                 Any spill that you are not sure whether it is reportable or not.<br/>                 Any size spill that has a regulatory requirement to be reported.</p> |   |   |   |
| <p><b>IF ANY INFORMATION IS UNKNOWN, LEAVE BLANK FOR LAWLA FOLLOW-UP.</b></p>  |   |   |   |
| Person Reporting   |   | Date of Report:   |   |
| Name:  | Company:  | Phone:  | Email:  |
| Date of Incident:  | Material(s) Spilled/Discharged (i.e. Jet-A, gas, etc.):   | Quantity Spilled (gal):   |   |
| Time of incident:  |   |   |   |
| Weather Conditions:  |   |   |   |
| Location of Spill (photo document):  |   | Extent of Spill (Square Feet) (photo document):                                       |   |
| Leaseholder Company Name:  |   |   |   |
| Leaseholder's Representative Name:   |   |   |   |
| Phone:   |   | Email:  |   |
| Company Responsible for Spill/Incident:  |   |   |   |
| Company Contact Person:  |   |   |   |
| Phone:   |   | Email:  |   |
| Person In Charge of Clean Up   |   |   |   |
| Name:  |   | Company:  | Phone:  |
| Quantity Contained:  | Containment Method(s):  | Quantity Recovered:   |   |
| Did Discharge Leave Lease Boundary?  | Spill Area:   | Storm Drain(s) Impacted?  | Soil Impacted?  |
| <input type="checkbox"/> Yes<br><input type="checkbox"/> No  | <input type="checkbox"/> Indoor<br><input type="checkbox"/> Outside<br><input type="checkbox"/> Outside Covered                       | <input type="checkbox"/> Yes<br><input type="checkbox"/> No                           | <input type="checkbox"/> Yes<br><input type="checkbox"/> No |
| Immediate Actions Taken:   |   |   | Spill Characteristics (i.e. Phys/Chem):                     |
| <input type="checkbox"/> Containment<br><input type="checkbox"/> Foam Retardant  | <input type="checkbox"/> Evacuation<br><input type="checkbox"/> Neutralization  | <input type="checkbox"/> System Shutdown<br><input type="checkbox"/> Other _____      |   |
| Source of Spill (Ex. Pipeline, Vehicle, Aircraft, Etc):  |   |   |   |
| Cause of Spill or Factors Contributing to Release:   |   |   | Disposal Method of Recovered Material:                      |
| <input type="checkbox"/> Equipment Failure<br><input type="checkbox"/> Operator Error<br><input type="checkbox"/> Faulty Process Design  | <input type="checkbox"/> Training Deficiencies<br><input type="checkbox"/> Weather Conditions<br><input type="checkbox"/> Other _____ |   |   |
| ARCC Notified?   | Fire Dept Notified?   | LAWA Environmental Notified?  |   |
| <input type="checkbox"/> Yes<br><input type="checkbox"/> No  | <input type="checkbox"/> Yes<br><input type="checkbox"/> No   | <input type="checkbox"/> Yes Who: _____<br>When: _____<br><input type="checkbox"/> No |   |
| Actions Taken to Prevent Re-Occurrence:  |   |   |   |
| FOR ELUP USE ONLY:   |   |   |   |
| Discharged from SW Conveyance System?  |   |   |   |
| <input type="checkbox"/> Toxic Materials ID'ed in 40 CFR §302? Name: _____   |   |   |   |
| <input type="checkbox"/> Oil & Haz Subst Exceeding RQ (40 CFR §§ 110, 117, & 302)? Name: _____   |   |   |   |
| <input type="checkbox"/> Approx QTY of material discharged from SW conveyance. _____   |   |   |   |
| <input type="checkbox"/> Manifest # _____  |   |   |   |

# Spills & Incidents

38

**NOTIFY ARCC ASAP @ (424) 646-LAWA WHEN SPILL ENTERS STORM DRAIN**

**SUBMIT FORM TO STORMWATER@LAWA.ORG NO LATER THAN 24 HOURS AFTER SPILL OCCURRED**

Report: Spills over 1 gal in volume (1 gallon could cover more than 60 square feet).  
Any product enters into a storm drain.  
Any spill that you are not sure whether it is reportable or not.  
Any size spill that has a regulatory requirement to be reported.

**IF ANY INFORMATION IS UNKNOWN, LEAVE BLANK FOR LAWA FOLLOW-UP.**



# Spills & Incidents

39

Email to

[stormwater@lawa.org](mailto:stormwater@lawa.org)



# Spills & Incidents

- **Over 1 gallon**
- **Anytime something enters the Storm Drain**
- **Any size spill that has a regulatory requirement to be reported.**

**When in doubt, SUBMIT Form.**





# Spills & Incidents

|                                     |   |                         |        |
|-------------------------------------|---|-------------------------|--------|
| Person Reporting                    |   | Date of Report:         |        |
| Name:                               | Company:  | Phone:                  | Email: |
| Date of Incident:                   | Material(s) Spilled/Discharged (i.e. Jet-A, gas, etc.): | Quantity Spilled (gal): |        |
| Time of incident:                   |   |                         |        |
| Weather Conditions:                 |   |                         |        |
| Location of Spill (photo document): | Extent of Spill (Square Feet) (photo document):         |                         |        |



# Spills & Incidents

|   |        |
|---|--------|
| Leaseholder Company Name:               |        |
| Leaseholder's Representative Name:      |        |
| Phone:                                  | Email: |
| Company Responsible for Spill/Incident: |        |
| Company Contact Person:                 |        |
| Phone:                                  | Email: |



# Spills & Incidents

|                              |                        |                     |
|------------------------------|------------------------|---------------------|
| Person In Charge of Clean Up |                        |                     |
| Name:                        | Company:               | Phone:              |
| Quantity Contained:          | Containment Method(s): | Quantity Recovered: |



# Spills & Incidents

|   |  |  |  |   |  |
|---|--|--|--|---|--|
| Quantity Contained:   |  | Containment Method(s):   |  | Quantity Recovered:   |  |
| Did Discharge Leave Lease Boundary?<br><input type="checkbox"/> Yes<br><input type="checkbox"/> No  |  | Spill Area:<br><input type="checkbox"/> Indoor<br><input type="checkbox"/> Outside<br><input type="checkbox"/> Outside Covered |  | Storm Drain(s) Impacted?<br><input type="checkbox"/> Yes<br><input type="checkbox"/> No |  |
|   |  |  |  | Soil Impacted?<br><input type="checkbox"/> Yes<br><input type="checkbox"/> No           |  |
| Immediate Actions Taken:<br><input type="checkbox"/> Containment<br><input type="checkbox"/> Foam Retardant<br><input type="checkbox"/> Evacuation<br><input type="checkbox"/> Neutralization |  |  |  | Spill Characteristics (i.e. Phys/Chem):   |  |
|   |  |  |  | <input type="checkbox"/> System Shutdown<br><input type="checkbox"/> Other _____        |  |



# Spills & Incidents

Source of Spill (Ex. Pipeline, Vehicle, Aircraft, Etc):

Cause of Spill or Factors Contributing to Release:

- Equipment Failure
- Operator Error
- Faulty Process Design
- Training Deficiencies
- Weather Conditions
- Other \_\_\_\_\_

Disposal Method of Recovered Material:





# Spills & Incidents

Actions Taken to Prevent Re-Occurrence:



# Spills & Incidents

**FOR ELUP USE ONLY:**

Discharged from SW Conveyance System? \_\_\_\_\_

- Toxic Materials ID'ed in 40 CFR §302? Name: \_\_\_\_\_
- Oil & Haz Subst Exceeding RQ (40 CFR §§ 110, 117, & 302)? Name: \_\_\_\_\_
- Approx QTY of material discharged from SW conveyance. \_\_\_\_\_
- Manifest # \_\_\_\_\_



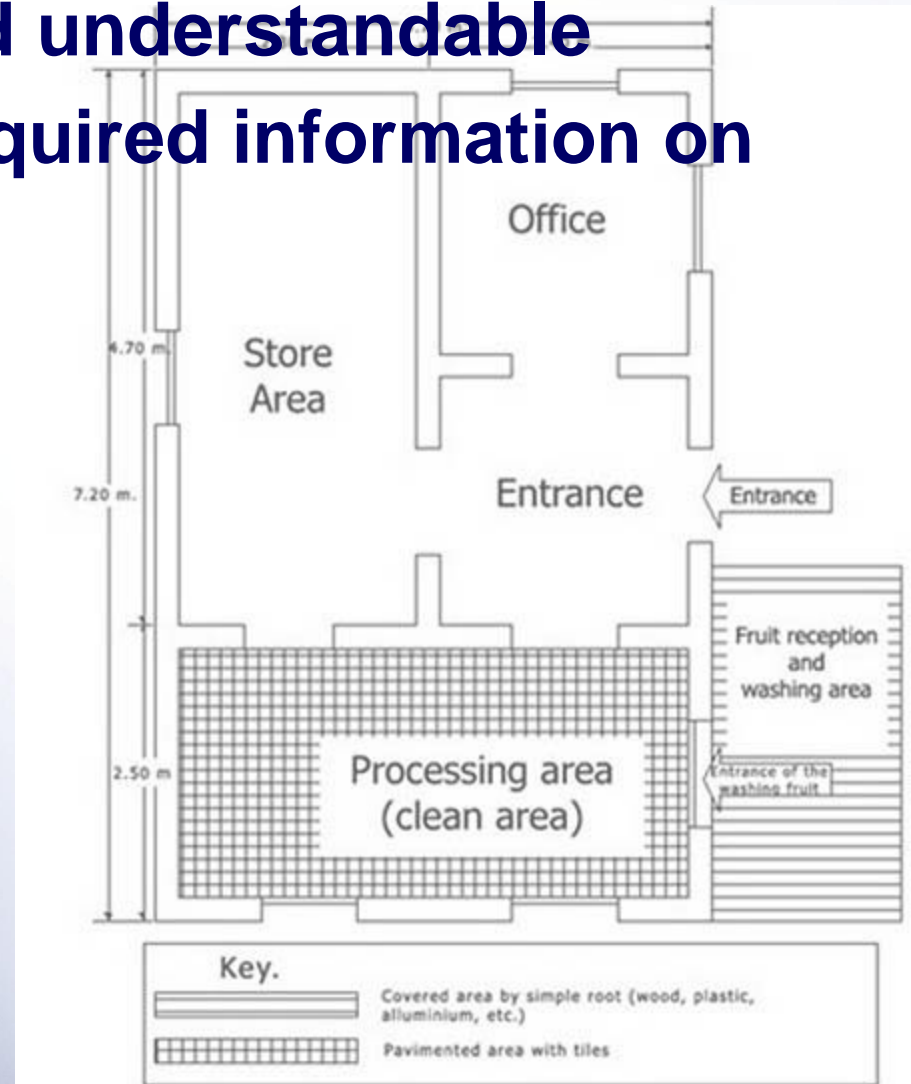


# Requirement 4: Site Map



# Site Map

- **Must be legible and understandable**
- **May provide the required information on multiple site maps.**
- **Must Include**
  - **Business Name**
  - **Address**
  - **Legends**
  - **North Arrow**



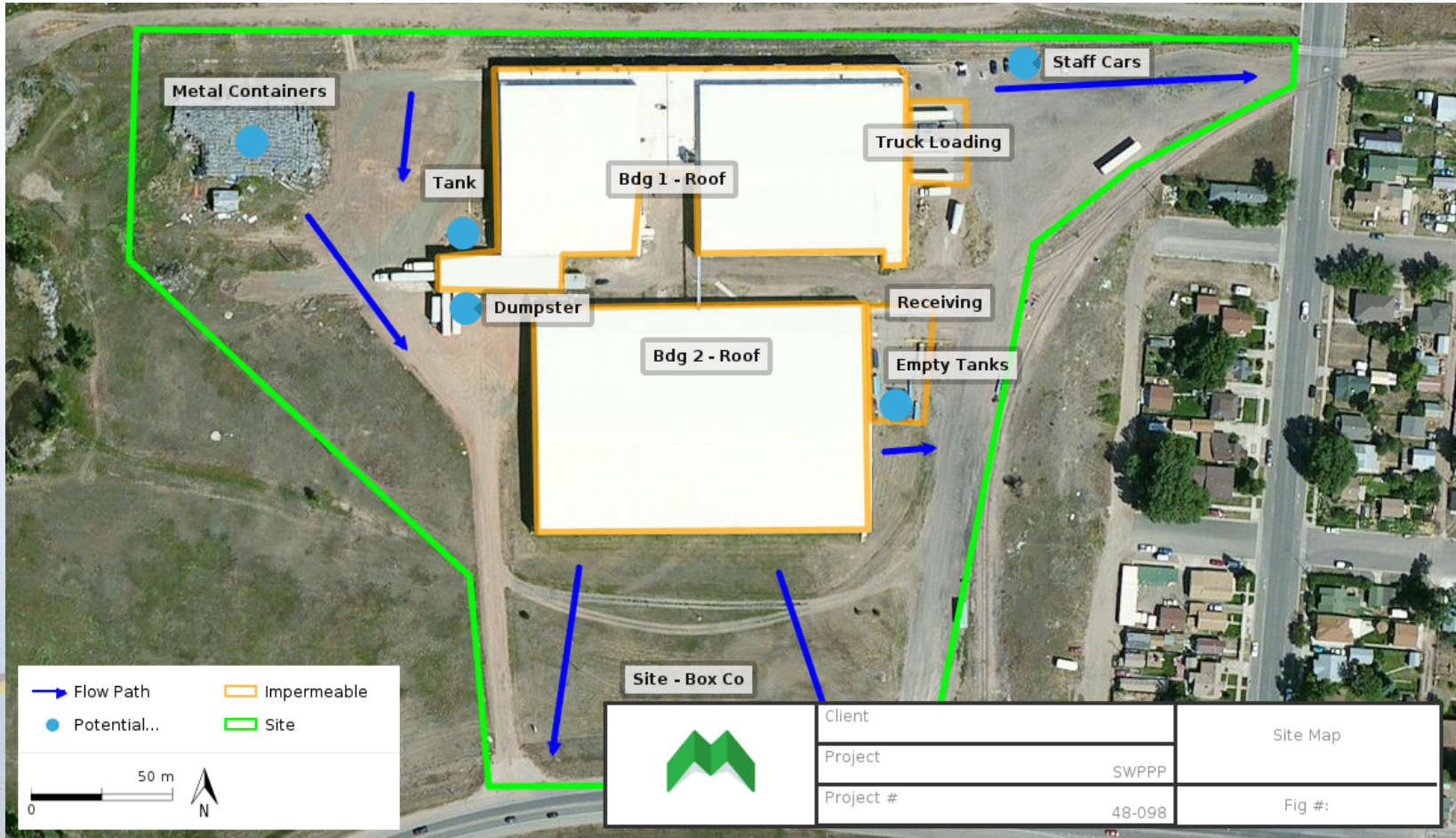
# Site Map

## Other Info to Include:

- **Boundaries**
- **Drainage Areas**
- **Flow direction**
- **Water Bodies**
- **Storm Drain Inlets**
- **Storm Water Collection & Conveyance Systems**
- **Discharge Locations,**
- **Structural Control**
- **Impervious Areas**
- **Exposed Materials**
- **Sites of Past Spills**
- **Areas of Industrial Activity**



# Site Map



# Site Map



- = FACILITY BOUNDARY
- = STORM WATER FLOW DIRECTION
- = STORM DRAIN
- = IMPERVIOUS AREA - ALL OTHERS ARE PERVIOUS
- = POTENTIAL AREA OF POLLUTANT CONTACT
- = DISCHARGE POINT FROM AIRPORT PROPERTY

SITE MAP LOCATION  
 WESTERN JET AVIATION  
 16101 SATICOY ST HNG#901  
 VAN NUYS, CA 91406

|                  |           |
|------------------|-----------|
| PROJECT          | JUNE 2015 |
| WJA FACILITY MAP |           |

Email to

[stormwater@lawa.org](mailto:stormwater@lawa.org)



# Chemical Inventory



# Chemical Inventory



Los Angeles World Airports  
**STORIED MATERIALS - BEST MANAGEMENT PRACTICES (BMP)  
 CHEMICAL INVENTORY**

Tenant's Name: \_\_\_\_\_  
 Tenant's Address: \_\_\_\_\_

| A. Used On-Site?         |                          | Chemical                   | Quantity/Units | B. Stored on Site?       |                          |                          | C. Secondary Containment Present? |                          |                          | D. Contact with Discharges? |                          |                          |
|--------------------------|--------------------------|----------------------------|----------------|--------------------------|--------------------------|--------------------------|-----------------------------------|--------------------------|--------------------------|-----------------------------|--------------------------|--------------------------|
| Yes                      | No                       |                            |                | Inside                   | Out Covered              | Out Uncovered            | Yes                               | No                       | N/A                      | Yes                         | No                       | N/A                      |
| <input type="checkbox"/> | <input type="checkbox"/> | Acids                      |                | <input type="checkbox"/> | <input type="checkbox"/> | <input type="checkbox"/> | <input type="checkbox"/>          | <input type="checkbox"/> | <input type="checkbox"/> | <input type="checkbox"/>    | <input type="checkbox"/> | <input type="checkbox"/> |
| <input type="checkbox"/> | <input type="checkbox"/> | Anti-freeze                |                | <input type="checkbox"/> | <input type="checkbox"/> | <input type="checkbox"/> | <input type="checkbox"/>          | <input type="checkbox"/> | <input type="checkbox"/> | <input type="checkbox"/>    | <input type="checkbox"/> | <input type="checkbox"/> |
| <input type="checkbox"/> | <input type="checkbox"/> | AV Gas                     |                | <input type="checkbox"/> | <input type="checkbox"/> | <input type="checkbox"/> | <input type="checkbox"/>          | <input type="checkbox"/> | <input type="checkbox"/> | <input type="checkbox"/>    | <input type="checkbox"/> | <input type="checkbox"/> |
| <input type="checkbox"/> | <input type="checkbox"/> | Brake Fluids               |                | <input type="checkbox"/> | <input type="checkbox"/> | <input type="checkbox"/> | <input type="checkbox"/>          | <input type="checkbox"/> | <input type="checkbox"/> | <input type="checkbox"/>    | <input type="checkbox"/> | <input type="checkbox"/> |
| <input type="checkbox"/> | <input type="checkbox"/> | Concrete Materials         |                | <input type="checkbox"/> | <input type="checkbox"/> | <input type="checkbox"/> | <input type="checkbox"/>          | <input type="checkbox"/> | <input type="checkbox"/> | <input type="checkbox"/>    | <input type="checkbox"/> | <input type="checkbox"/> |
| <input type="checkbox"/> | <input type="checkbox"/> | Caustic Solution           |                | <input type="checkbox"/> | <input type="checkbox"/> | <input type="checkbox"/> | <input type="checkbox"/>          | <input type="checkbox"/> | <input type="checkbox"/> | <input type="checkbox"/>    | <input type="checkbox"/> | <input type="checkbox"/> |
| <input type="checkbox"/> | <input type="checkbox"/> | Degreasers                 |                | <input type="checkbox"/> | <input type="checkbox"/> | <input type="checkbox"/> | <input type="checkbox"/>          | <input type="checkbox"/> | <input type="checkbox"/> | <input type="checkbox"/>    | <input type="checkbox"/> | <input type="checkbox"/> |
| <input type="checkbox"/> | <input type="checkbox"/> | Deodorizing Solution       |                | <input type="checkbox"/> | <input type="checkbox"/> | <input type="checkbox"/> | <input type="checkbox"/>          | <input type="checkbox"/> | <input type="checkbox"/> | <input type="checkbox"/>    | <input type="checkbox"/> | <input type="checkbox"/> |
| <input type="checkbox"/> | <input type="checkbox"/> | Diesel                     |                | <input type="checkbox"/> | <input type="checkbox"/> | <input type="checkbox"/> | <input type="checkbox"/>          | <input type="checkbox"/> | <input type="checkbox"/> | <input type="checkbox"/>    | <input type="checkbox"/> | <input type="checkbox"/> |
| <input type="checkbox"/> | <input type="checkbox"/> | Engine Oil                 |                | <input type="checkbox"/> | <input type="checkbox"/> | <input type="checkbox"/> | <input type="checkbox"/>          | <input type="checkbox"/> | <input type="checkbox"/> | <input type="checkbox"/>    | <input type="checkbox"/> | <input type="checkbox"/> |
| <input type="checkbox"/> | <input type="checkbox"/> | Fertilizer                 |                | <input type="checkbox"/> | <input type="checkbox"/> | <input type="checkbox"/> | <input type="checkbox"/>          | <input type="checkbox"/> | <input type="checkbox"/> | <input type="checkbox"/>    | <input type="checkbox"/> | <input type="checkbox"/> |
| <input type="checkbox"/> | <input type="checkbox"/> | Foaming Agent (AFFF)       |                | <input type="checkbox"/> | <input type="checkbox"/> | <input type="checkbox"/> | <input type="checkbox"/>          | <input type="checkbox"/> | <input type="checkbox"/> | <input type="checkbox"/>    | <input type="checkbox"/> | <input type="checkbox"/> |
| <input type="checkbox"/> | <input type="checkbox"/> | Freon                      |                | <input type="checkbox"/> | <input type="checkbox"/> | <input type="checkbox"/> | <input type="checkbox"/>          | <input type="checkbox"/> | <input type="checkbox"/> | <input type="checkbox"/>    | <input type="checkbox"/> | <input type="checkbox"/> |
| <input type="checkbox"/> | <input type="checkbox"/> | Fuel Additive              |                | <input type="checkbox"/> | <input type="checkbox"/> | <input type="checkbox"/> | <input type="checkbox"/>          | <input type="checkbox"/> | <input type="checkbox"/> | <input type="checkbox"/>    | <input type="checkbox"/> | <input type="checkbox"/> |
| <input type="checkbox"/> | <input type="checkbox"/> | Fungicide                  |                | <input type="checkbox"/> | <input type="checkbox"/> | <input type="checkbox"/> | <input type="checkbox"/>          | <input type="checkbox"/> | <input type="checkbox"/> | <input type="checkbox"/>    | <input type="checkbox"/> | <input type="checkbox"/> |
| <input type="checkbox"/> | <input type="checkbox"/> | Gasoline                   |                | <input type="checkbox"/> | <input type="checkbox"/> | <input type="checkbox"/> | <input type="checkbox"/>          | <input type="checkbox"/> | <input type="checkbox"/> | <input type="checkbox"/>    | <input type="checkbox"/> | <input type="checkbox"/> |
| <input type="checkbox"/> | <input type="checkbox"/> | Grease                     |                | <input type="checkbox"/> | <input type="checkbox"/> | <input type="checkbox"/> | <input type="checkbox"/>          | <input type="checkbox"/> | <input type="checkbox"/> | <input type="checkbox"/>    | <input type="checkbox"/> | <input type="checkbox"/> |
| <input type="checkbox"/> | <input type="checkbox"/> | H2O Treatment Chemicals    |                | <input type="checkbox"/> | <input type="checkbox"/> | <input type="checkbox"/> | <input type="checkbox"/>          | <input type="checkbox"/> | <input type="checkbox"/> | <input type="checkbox"/>    | <input type="checkbox"/> | <input type="checkbox"/> |
| <input type="checkbox"/> | <input type="checkbox"/> | Hydraulic Fluids           |                | <input type="checkbox"/> | <input type="checkbox"/> | <input type="checkbox"/> | <input type="checkbox"/>          | <input type="checkbox"/> | <input type="checkbox"/> | <input type="checkbox"/>    | <input type="checkbox"/> | <input type="checkbox"/> |
| <input type="checkbox"/> | <input type="checkbox"/> | Isopropyl Alcohol          |                | <input type="checkbox"/> | <input type="checkbox"/> | <input type="checkbox"/> | <input type="checkbox"/>          | <input type="checkbox"/> | <input type="checkbox"/> | <input type="checkbox"/>    | <input type="checkbox"/> | <input type="checkbox"/> |
| <input type="checkbox"/> | <input type="checkbox"/> | Jet A                      |                | <input type="checkbox"/> | <input type="checkbox"/> | <input type="checkbox"/> | <input type="checkbox"/>          | <input type="checkbox"/> | <input type="checkbox"/> | <input type="checkbox"/>    | <input type="checkbox"/> | <input type="checkbox"/> |
| <input type="checkbox"/> | <input type="checkbox"/> | Motor Oil                  |                | <input type="checkbox"/> | <input type="checkbox"/> | <input type="checkbox"/> | <input type="checkbox"/>          | <input type="checkbox"/> | <input type="checkbox"/> | <input type="checkbox"/>    | <input type="checkbox"/> | <input type="checkbox"/> |
| <input type="checkbox"/> | <input type="checkbox"/> | Nutrient                   |                | <input type="checkbox"/> | <input type="checkbox"/> | <input type="checkbox"/> | <input type="checkbox"/>          | <input type="checkbox"/> | <input type="checkbox"/> | <input type="checkbox"/>    | <input type="checkbox"/> | <input type="checkbox"/> |
| <input type="checkbox"/> | <input type="checkbox"/> | Oil Rags                   |                | <input type="checkbox"/> | <input type="checkbox"/> | <input type="checkbox"/> | <input type="checkbox"/>          | <input type="checkbox"/> | <input type="checkbox"/> | <input type="checkbox"/>    | <input type="checkbox"/> | <input type="checkbox"/> |
| <input type="checkbox"/> | <input type="checkbox"/> | Paint                      |                | <input type="checkbox"/> | <input type="checkbox"/> | <input type="checkbox"/> | <input type="checkbox"/>          | <input type="checkbox"/> | <input type="checkbox"/> | <input type="checkbox"/>    | <input type="checkbox"/> | <input type="checkbox"/> |
| <input type="checkbox"/> | <input type="checkbox"/> | Pesticide                  |                | <input type="checkbox"/> | <input type="checkbox"/> | <input type="checkbox"/> | <input type="checkbox"/>          | <input type="checkbox"/> | <input type="checkbox"/> | <input type="checkbox"/>    | <input type="checkbox"/> | <input type="checkbox"/> |
| <input type="checkbox"/> | <input type="checkbox"/> | Herbicide                  |                | <input type="checkbox"/> | <input type="checkbox"/> | <input type="checkbox"/> | <input type="checkbox"/>          | <input type="checkbox"/> | <input type="checkbox"/> | <input type="checkbox"/>    | <input type="checkbox"/> | <input type="checkbox"/> |
| <input type="checkbox"/> | <input type="checkbox"/> | Propylene Glycol (Deicing) |                | <input type="checkbox"/> | <input type="checkbox"/> | <input type="checkbox"/> | <input type="checkbox"/>          | <input type="checkbox"/> | <input type="checkbox"/> | <input type="checkbox"/>    | <input type="checkbox"/> | <input type="checkbox"/> |
| <input type="checkbox"/> | <input type="checkbox"/> | Soap                       |                | <input type="checkbox"/> | <input type="checkbox"/> | <input type="checkbox"/> | <input type="checkbox"/>          | <input type="checkbox"/> | <input type="checkbox"/> | <input type="checkbox"/>    | <input type="checkbox"/> | <input type="checkbox"/> |
| <input type="checkbox"/> | <input type="checkbox"/> | Solvents                   |                | <input type="checkbox"/> | <input type="checkbox"/> | <input type="checkbox"/> | <input type="checkbox"/>          | <input type="checkbox"/> | <input type="checkbox"/> | <input type="checkbox"/>    | <input type="checkbox"/> | <input type="checkbox"/> |
| <input type="checkbox"/> | <input type="checkbox"/> | Transmission Fluids        |                | <input type="checkbox"/> | <input type="checkbox"/> | <input type="checkbox"/> | <input type="checkbox"/>          | <input type="checkbox"/> | <input type="checkbox"/> | <input type="checkbox"/>    | <input type="checkbox"/> | <input type="checkbox"/> |
| <input type="checkbox"/> | <input type="checkbox"/> | Turbine Oil                |                | <input type="checkbox"/> | <input type="checkbox"/> | <input type="checkbox"/> | <input type="checkbox"/>          | <input type="checkbox"/> | <input type="checkbox"/> | <input type="checkbox"/>    | <input type="checkbox"/> | <input type="checkbox"/> |
| <input type="checkbox"/> | <input type="checkbox"/> | Waste Absorbent            |                | <input type="checkbox"/> | <input type="checkbox"/> | <input type="checkbox"/> | <input type="checkbox"/>          | <input type="checkbox"/> | <input type="checkbox"/> | <input type="checkbox"/>    | <input type="checkbox"/> | <input type="checkbox"/> |
| <input type="checkbox"/> | <input type="checkbox"/> | Waste Anti-freeze          |                | <input type="checkbox"/> | <input type="checkbox"/> | <input type="checkbox"/> | <input type="checkbox"/>          | <input type="checkbox"/> | <input type="checkbox"/> | <input type="checkbox"/>    | <input type="checkbox"/> | <input type="checkbox"/> |
| <input type="checkbox"/> | <input type="checkbox"/> | Waste Fuel                 |                | <input type="checkbox"/> | <input type="checkbox"/> | <input type="checkbox"/> | <input type="checkbox"/>          | <input type="checkbox"/> | <input type="checkbox"/> | <input type="checkbox"/>    | <input type="checkbox"/> | <input type="checkbox"/> |
| <input type="checkbox"/> | <input type="checkbox"/> | Waste Hydraulics           |                | <input type="checkbox"/> | <input type="checkbox"/> | <input type="checkbox"/> | <input type="checkbox"/>          | <input type="checkbox"/> | <input type="checkbox"/> | <input type="checkbox"/>    | <input type="checkbox"/> | <input type="checkbox"/> |
| <input type="checkbox"/> | <input type="checkbox"/> | Waste Oil                  |                | <input type="checkbox"/> | <input type="checkbox"/> | <input type="checkbox"/> | <input type="checkbox"/>          | <input type="checkbox"/> | <input type="checkbox"/> | <input type="checkbox"/>    | <input type="checkbox"/> | <input type="checkbox"/> |
| <input type="checkbox"/> | <input type="checkbox"/> | Waste Oil Filters          |                | <input type="checkbox"/> | <input type="checkbox"/> | <input type="checkbox"/> | <input type="checkbox"/>          | <input type="checkbox"/> | <input type="checkbox"/> | <input type="checkbox"/>    | <input type="checkbox"/> | <input type="checkbox"/> |
| <input type="checkbox"/> | <input type="checkbox"/> | Waste Paint                |                | <input type="checkbox"/> | <input type="checkbox"/> | <input type="checkbox"/> | <input type="checkbox"/>          | <input type="checkbox"/> | <input type="checkbox"/> | <input type="checkbox"/>    | <input type="checkbox"/> | <input type="checkbox"/> |
| <input type="checkbox"/> | <input type="checkbox"/> | Waste Solvents             |                | <input type="checkbox"/> | <input type="checkbox"/> | <input type="checkbox"/> | <input type="checkbox"/>          | <input type="checkbox"/> | <input type="checkbox"/> | <input type="checkbox"/>    | <input type="checkbox"/> | <input type="checkbox"/> |
| <input type="checkbox"/> | <input type="checkbox"/> | Other:                     |                | <input type="checkbox"/> | <input type="checkbox"/> | <input type="checkbox"/> | <input type="checkbox"/>          | <input type="checkbox"/> | <input type="checkbox"/> | <input type="checkbox"/>    | <input type="checkbox"/> | <input type="checkbox"/> |
| <input type="checkbox"/> | <input type="checkbox"/> | Other:                     |                | <input type="checkbox"/> | <input type="checkbox"/> | <input type="checkbox"/> | <input type="checkbox"/>          | <input type="checkbox"/> | <input type="checkbox"/> | <input type="checkbox"/>    | <input type="checkbox"/> | <input type="checkbox"/> |
| <input type="checkbox"/> | <input type="checkbox"/> | Other:                     |                | <input type="checkbox"/> | <input type="checkbox"/> | <input type="checkbox"/> | <input type="checkbox"/>          | <input type="checkbox"/> | <input type="checkbox"/> | <input type="checkbox"/>    | <input type="checkbox"/> | <input type="checkbox"/> |
| <input type="checkbox"/> | <input type="checkbox"/> | Other:                     |                | <input type="checkbox"/> | <input type="checkbox"/> | <input type="checkbox"/> | <input type="checkbox"/>          | <input type="checkbox"/> | <input type="checkbox"/> | <input type="checkbox"/>    | <input type="checkbox"/> | <input type="checkbox"/> |
| <input type="checkbox"/> | <input type="checkbox"/> | Other:                     |                | <input type="checkbox"/> | <input type="checkbox"/> | <input type="checkbox"/> | <input type="checkbox"/>          | <input type="checkbox"/> | <input type="checkbox"/> | <input type="checkbox"/>    | <input type="checkbox"/> | <input type="checkbox"/> |
| <input type="checkbox"/> | <input type="checkbox"/> | Other:                     |                | <input type="checkbox"/> | <input type="checkbox"/> | <input type="checkbox"/> | <input type="checkbox"/>          | <input type="checkbox"/> | <input type="checkbox"/> | <input type="checkbox"/>    | <input type="checkbox"/> | <input type="checkbox"/> |
| <input type="checkbox"/> | <input type="checkbox"/> | Other:                     |                | <input type="checkbox"/> | <input type="checkbox"/> | <input type="checkbox"/> | <input type="checkbox"/>          | <input type="checkbox"/> | <input type="checkbox"/> | <input type="checkbox"/>    | <input type="checkbox"/> | <input type="checkbox"/> |
| <input type="checkbox"/> | <input type="checkbox"/> | Other:                     |                | <input type="checkbox"/> | <input type="checkbox"/> | <input type="checkbox"/> | <input type="checkbox"/>          | <input type="checkbox"/> | <input type="checkbox"/> | <input type="checkbox"/>    | <input type="checkbox"/> | <input type="checkbox"/> |
| <input type="checkbox"/> | <input type="checkbox"/> | Other:                     |                | <input type="checkbox"/> | <input type="checkbox"/> | <input type="checkbox"/> | <input type="checkbox"/>          | <input type="checkbox"/> | <input type="checkbox"/> | <input type="checkbox"/>    | <input type="checkbox"/> | <input type="checkbox"/> |
| <input type="checkbox"/> | <input type="checkbox"/> | Other:                     |                | <input type="checkbox"/> | <input type="checkbox"/> | <input type="checkbox"/> | <input type="checkbox"/>          | <input type="checkbox"/> | <input type="checkbox"/> | <input type="checkbox"/>    | <input type="checkbox"/> | <input type="checkbox"/> |
| <input type="checkbox"/> | <input type="checkbox"/> | Other:                     |                | <input type="checkbox"/> | <input type="checkbox"/> | <input type="checkbox"/> | <input type="checkbox"/>          | <input type="checkbox"/> | <input type="checkbox"/> | <input type="checkbox"/>    | <input type="checkbox"/> | <input type="checkbox"/> |
| <input type="checkbox"/> | <input type="checkbox"/> | Other:                     |                | <input type="checkbox"/> | <input type="checkbox"/> | <input type="checkbox"/> | <input type="checkbox"/>          | <input type="checkbox"/> | <input type="checkbox"/> | <input type="checkbox"/>    | <input type="checkbox"/> | <input type="checkbox"/> |
| <input type="checkbox"/> | <input type="checkbox"/> | Other:                     |                | <input type="checkbox"/> | <input type="checkbox"/> | <input type="checkbox"/> | <input type="checkbox"/>          | <input type="checkbox"/> | <input type="checkbox"/> | <input type="checkbox"/>    | <input type="checkbox"/> | <input type="checkbox"/> |
| <input type="checkbox"/> | <input type="checkbox"/> | Other:                     |                | <input type="checkbox"/> | <input type="checkbox"/> | <input type="checkbox"/> | <input type="checkbox"/>          | <input type="checkbox"/> | <input type="checkbox"/> | <input type="checkbox"/>    | <input type="checkbox"/> | <input type="checkbox"/> |
| <input type="checkbox"/> | <input type="checkbox"/> | Other:                     |                | <input type="checkbox"/> | <input type="checkbox"/> | <input type="checkbox"/> | <input type="checkbox"/>          | <input type="checkbox"/> | <input type="checkbox"/> | <input type="checkbox"/>    | <input type="checkbox"/> | <input type="checkbox"/> |
| <input type="checkbox"/> | <input type="checkbox"/> | Other:                     |                | <input type="checkbox"/> | <input type="checkbox"/> | <input type="checkbox"/> | <input type="checkbox"/>          | <input type="checkbox"/> | <input type="checkbox"/> | <input type="checkbox"/>    | <input type="checkbox"/> | <input type="checkbox"/> |
| <input type="checkbox"/> | <input type="checkbox"/> | Other:                     |                | <input type="checkbox"/> | <input type="checkbox"/> | <input type="checkbox"/> | <input type="checkbox"/>          | <input type="checkbox"/> | <input type="checkbox"/> | <input type="checkbox"/>    | <input type="checkbox"/> | <input type="checkbox"/> |
| <input type="checkbox"/> | <input type="checkbox"/> | Other:                     |                | <input type="checkbox"/> | <input type="checkbox"/> | <input type="checkbox"/> | <input type="checkbox"/>          | <input type="checkbox"/> | <input type="checkbox"/> | <input type="checkbox"/>    | <input type="checkbox"/> | <input type="checkbox"/> |
| <input type="checkbox"/> | <input type="checkbox"/> | Other:                     |                | <input type="checkbox"/> | <input type="checkbox"/> | <input type="checkbox"/> | <input type="checkbox"/>          | <input type="checkbox"/> | <input type="checkbox"/> | <input type="checkbox"/>    | <input type="checkbox"/> | <input type="checkbox"/> |
| <input type="checkbox"/> | <input type="checkbox"/> | Other:                     |                | <input type="checkbox"/> | <input type="checkbox"/> | <input type="checkbox"/> | <input type="checkbox"/>          | <input type="checkbox"/> | <input type="checkbox"/> | <input type="checkbox"/>    | <input type="checkbox"/> | <input type="checkbox"/> |
| <input type="checkbox"/> | <input type="checkbox"/> | Other:                     |                | <input type="checkbox"/> | <input type="checkbox"/> | <input type="checkbox"/> | <input type="checkbox"/>          | <input type="checkbox"/> | <input type="checkbox"/> | <input type="checkbox"/>    | <input type="checkbox"/> | <input type="checkbox"/> |
| <input type="checkbox"/> | <input type="checkbox"/> | Other:                     |                | <input type="checkbox"/> | <input type="checkbox"/> | <input type="checkbox"/> | <input type="checkbox"/>          | <input type="checkbox"/> | <input type="checkbox"/> | <input type="checkbox"/>    | <input type="checkbox"/> | <input type="checkbox"/> |
| <input type="checkbox"/> | <input type="checkbox"/> | Other:                     |                | <input type="checkbox"/> | <input type="checkbox"/> | <input type="checkbox"/> | <input type="checkbox"/>          | <input type="checkbox"/> | <input type="checkbox"/> | <input type="checkbox"/>    | <input type="checkbox"/> | <input type="checkbox"/> |
| <input type="checkbox"/> | <input type="checkbox"/> | Other:                     |                | <input type="checkbox"/> | <input type="checkbox"/> | <input type="checkbox"/> | <input type="checkbox"/>          | <input type="checkbox"/> | <input type="checkbox"/> | <input type="checkbox"/>    | <input type="checkbox"/> | <input type="checkbox"/> |
| <input type="checkbox"/> | <input type="checkbox"/> | Other:                     |                | <input type="checkbox"/> | <input type="checkbox"/> | <input type="checkbox"/> | <input type="checkbox"/>          | <input type="checkbox"/> | <input type="checkbox"/> | <input type="checkbox"/>    | <input type="checkbox"/> | <input type="checkbox"/> |
| <input type="checkbox"/> | <input type="checkbox"/> | Other:                     |                | <input type="checkbox"/> | <input type="checkbox"/> | <input type="checkbox"/> | <input type="checkbox"/>          | <input type="checkbox"/> | <input type="checkbox"/> | <input type="checkbox"/>    | <input type="checkbox"/> | <input type="checkbox"/> |
| <input type="checkbox"/> | <input type="checkbox"/> | Other:                     |                | <input type="checkbox"/> | <input type="checkbox"/> | <input type="checkbox"/> | <input type="checkbox"/>          | <input type="checkbox"/> | <input type="checkbox"/> | <input type="checkbox"/>    | <input type="checkbox"/> | <input type="checkbox"/> |
| <input type="checkbox"/> | <input type="checkbox"/> | Other:                     |                | <input type="checkbox"/> | <input type="checkbox"/> | <input type="checkbox"/> | <input type="checkbox"/>          | <input type="checkbox"/> | <input type="checkbox"/> | <input type="checkbox"/>    | <input type="checkbox"/> | <input type="checkbox"/> |
| <input type="checkbox"/> | <input type="checkbox"/> | Other:                     |                | <input type="checkbox"/> | <input type="checkbox"/> | <input type="checkbox"/> | <input type="checkbox"/>          | <input type="checkbox"/> | <input type="checkbox"/> | <input type="checkbox"/>    | <input type="checkbox"/> | <input type="checkbox"/> |
| <input type="checkbox"/> | <input type="checkbox"/> | Other:                     |                | <input type="checkbox"/> | <input type="checkbox"/> | <input type="checkbox"/> | <input type="checkbox"/>          | <input type="checkbox"/> | <input type="checkbox"/> | <input type="checkbox"/>    | <input type="checkbox"/> | <input type="checkbox"/> |
| <input type="checkbox"/> | <input type="checkbox"/> | Other:                     |                | <input type="checkbox"/> | <input type="checkbox"/> | <input type="checkbox"/> | <input type="checkbox"/>          | <input type="checkbox"/> | <input type="checkbox"/> | <input type="checkbox"/>    | <input type="checkbox"/> | <input type="checkbox"/> |
| <input type="checkbox"/> | <input type="checkbox"/> | Other:                     |                | <input type="checkbox"/> | <input type="checkbox"/> | <input type="checkbox"/> | <input type="checkbox"/>          | <input type="checkbox"/> | <input type="checkbox"/> | <input type="checkbox"/>    | <input type="checkbox"/> | <input type="checkbox"/> |
| <input type="checkbox"/> | <input type="checkbox"/> | Other:                     |                | <input type="checkbox"/> | <input type="checkbox"/> | <input type="checkbox"/> | <input type="checkbox"/>          | <input type="checkbox"/> | <input type="checkbox"/> | <input type="checkbox"/>    | <input type="checkbox"/> | <input type="checkbox"/> |
| <input type="checkbox"/> | <input type="checkbox"/> | Other:                     |                | <input type="checkbox"/> | <input type="checkbox"/> | <input type="checkbox"/> | <input type="checkbox"/>          | <input type="checkbox"/> | <input type="checkbox"/> | <input type="checkbox"/>    | <input type="checkbox"/> | <input type="checkbox"/> |
| <input type="checkbox"/> | <input type="checkbox"/> | Other:                     |                | <input type="checkbox"/> | <input type="checkbox"/> | <input type="checkbox"/> | <input type="checkbox"/>          | <input type="checkbox"/> | <input type="checkbox"/> | <input type="checkbox"/>    | <input type="checkbox"/> | <input type="checkbox"/> |
| <input type="checkbox"/> | <input type="checkbox"/> | Other:                     |                | <input type="checkbox"/> | <input type="checkbox"/> | <input type="checkbox"/> | <input type="checkbox"/>          | <input type="checkbox"/> | <input type="checkbox"/> | <input type="checkbox"/>    | <input type="checkbox"/> | <input type="checkbox"/> |
| <input type="checkbox"/> | <input type="checkbox"/> | Other:                     |                | <input type="checkbox"/> | <input type="checkbox"/> | <input type="checkbox"/> | <input type="checkbox"/>          | <input type="checkbox"/> | <input type="checkbox"/> | <input type="checkbox"/>    | <input type="checkbox"/> | <input type="checkbox"/> |
| <input type="checkbox"/> | <input type="checkbox"/> | Other:                     |                | <input type="checkbox"/> | <input type="checkbox"/> | <input type="checkbox"/> | <input type="checkbox"/>          | <input type="checkbox"/> | <input type="checkbox"/> | <input type="checkbox"/>    | <input type="checkbox"/> | <input type="checkbox"/> |
| <input type="checkbox"/> | <input type="checkbox"/> | Other:                     |                | <input type="checkbox"/> | <input type="checkbox"/> | <input type="checkbox"/> | <input type="checkbox"/>          | <input type="checkbox"/> | <input type="checkbox"/> | <input type="checkbox"/>    | <input type="checkbox"/> | <input type="checkbox"/> |
| <input type="checkbox"/> | <input type="checkbox"/> | Other:                     |                | <input type="checkbox"/> | <input type="checkbox"/> | <input type="checkbox"/> | <input type="checkbox"/>          | <input type="checkbox"/> | <input type="checkbox"/> | <input type="checkbox"/>    | <input type="checkbox"/> | <input type="checkbox"/> |
| <input type="checkbox"/> | <input type="checkbox"/> | Other:                     |                | <input type="checkbox"/> | <input type="checkbox"/> | <input type="checkbox"/> | <input type="checkbox"/>          | <input type="checkbox"/> | <input type="checkbox"/> | <input type="checkbox"/>    | <input type="checkbox"/> | <input type="checkbox"/> |
| <input type="checkbox"/> | <input type="checkbox"/> | Other:                     |                | <input type="checkbox"/> | <input type="checkbox"/> | <input type="checkbox"/> | <input type="checkbox"/>          | <input type="checkbox"/> | <input type="checkbox"/> | <input type="checkbox"/>    | <input type="checkbox"/> | <input type="checkbox"/> |
| <input type="checkbox"/> | <input type="checkbox"/> | Other:                     |                | <input type="checkbox"/> | <input type="checkbox"/> | <input type="checkbox"/> | <input type="checkbox"/>          | <input type="checkbox"/> | <input type="checkbox"/> | <input type="checkbox"/>    | <input type="checkbox"/> | <input type="checkbox"/> |
| <input type="checkbox"/> | <input type="checkbox"/> | Other:                     |                | <input type="checkbox"/> | <input type="checkbox"/> | <input type="checkbox"/> | <input type="checkbox"/>          | <input type="checkbox"/> | <input type="checkbox"/> | <input type="checkbox"/>    | <input type="checkbox"/> | <input type="checkbox"/> |
| <input type="checkbox"/> | <input type="checkbox"/> | Other:                     |                | <input type="checkbox"/> | <input type="checkbox"/> | <input type="checkbox"/> | <input type="checkbox"/>          | <input type="checkbox"/> | <input type="checkbox"/> | <input type="checkbox"/>    | <input type="checkbox"/> | <input type="checkbox"/> |
| <input type="checkbox"/> | <input type="checkbox"/> | Other:                     |                | <input type="checkbox"/> | <input type="checkbox"/> | <input type="checkbox"/> | <input type="checkbox"/>          | <input type="checkbox"/> | <input type="checkbox"/> | <input type="checkbox"/>    | <input type="checkbox"/> | <input type="checkbox"/> |
| <input type="checkbox"/> | <input type="checkbox"/> | Other:                     |                | <input type="checkbox"/> | <input type="checkbox"/> | <input type="checkbox"/> | <input type="checkbox"/>          | <input type="checkbox"/> | <input type="checkbox"/> | <input type="checkbox"/>    | <input type="checkbox"/> | <input type="checkbox"/> |
| <input type="checkbox"/> | <input type="checkbox"/> | Other:                     |                | <input type="checkbox"/> | <input type="checkbox"/> | <input type="checkbox"/> | <input type="checkbox"/>          | <input type="checkbox"/> | <input type="checkbox"/> | <input type="checkbox"/>    | <input type="checkbox"/> | <input type="checkbox"/> |
| <input type="checkbox"/> | <input type="checkbox"/> | Other:                     |                | <input type="checkbox"/> | <input type="checkbox"/> | <input type="checkbox"/> | <input type="checkbox"/>          | <input type="checkbox"/> | <input type="checkbox"/> | <input type="checkbox"/>    | <input type="checkbox"/> | <input type="checkbox"/> |
| <input type="checkbox"/> | <input type="checkbox"/> | Other:                     |                | <input type="checkbox"/> | <input type="checkbox"/> | <input type="checkbox"/> | <input type="checkbox"/>          | <input type="checkbox"/> | <input type="checkbox"/> | <input type="checkbox"/>    | <input type="checkbox"/> | <input type="checkbox"/> |
| <input type="checkbox"/> | <input type="checkbox"/> | Other:                     |                | <input type="checkbox"/> | <input type="checkbox"/> | <input type="checkbox"/> | <input type="checkbox"/>          | <input type="checkbox"/> | <input type="checkbox"/> | <input type="checkbox"/>    | <input type="checkbox"/> | <input type="checkbox"/> |
| <input type="checkbox"/> | <input type="checkbox"/> | Other:                     |                | <input type="checkbox"/> | <input type="checkbox"/> | <input type="checkbox"/> | <input type="checkbox"/>          | <input type="checkbox"/> | <input type="checkbox"/> | <input type="checkbox"/>    | <input type="checkbox"/> | <input type="checkbox"/> |
| <input type="checkbox"/> | <input type="checkbox"/> | Other:                     |                | <input type="checkbox"/> | <input type="checkbox"/> | <input type="checkbox"/> | <input type="checkbox"/>          | <input type="checkbox"/> | <input type="checkbox"/> | <input type="checkbox"/>    | <input type="checkbox"/> | <input type="checkbox"/> |
| <input type="checkbox"/> | <input type="checkbox"/> | Other:                     |                | <input type="checkbox"/> | <input type="checkbox"/> | <input type="checkbox"/> | <input type="checkbox"/>          | <input type="checkbox"/> | <input type="checkbox"/> | <input type="checkbox"/>    | <input type="checkbox"/> | <input type="checkbox"/> |
| <input type="checkbox"/> | <input type="checkbox"/> | Other:                     |                | <input type="checkbox"/> | <input type="checkbox"/> | <input type="checkbox"/> | <input type="checkbox"/>          | <input type="checkbox"/> | <input type="checkbox"/> | <input type="checkbox"/>    | <input type="checkbox"/> | <input type="checkbox"/> |
| <input type="checkbox"/> | <input type="checkbox"/> | Other:                     |                | <input type="checkbox"/> | <input type="checkbox"/> | <input type="checkbox"/> | <input type="checkbox"/>          | <input type="checkbox"/> | <input type="checkbox"/> | <input type="checkbox"/>    | <input type="checkbox"/> | <input type="checkbox"/> |
| <input type="checkbox"/> | <input type="checkbox"/> | Other:                     |                | <input type="checkbox"/> | <input type="checkbox"/> | <input type="checkbox"/> | <input type="checkbox"/>          | <input type="checkbox"/> | <input type="checkbox"/> | <input type="checkbox"/>    | <input type="checkbox"/> | <input type="checkbox"/> |
| <input type="checkbox"/> | <input type="checkbox"/> | Other:                     |                | <input type="checkbox"/> | <input type="checkbox"/> | <input type="checkbox"/> | <input type="checkbox"/>          | <input type="checkbox"/> | <input type="checkbox"/> | <input type="checkbox"/>    | <input type="checkbox"/> | <input type="checkbox"/> |
| <input type="checkbox"/> | <input type="checkbox"/> | Other:                     |                | <input type="checkbox"/> | <input type="checkbox"/> | <input type="checkbox"/> | <input type="checkbox"/>          | <input type="checkbox"/> | <input type="checkbox"/> | <input type="checkbox"/>    | <input type="checkbox"/> | <input type="checkbox"/> |
| <input type="checkbox"/> | <input type="checkbox"/> | Other:                     |                | <input type="checkbox"/> | <input type="checkbox"/> | <input type="checkbox"/> | <input type="checkbox"/>          | <input type="checkbox"/> | <input type="checkbox"/> | <input type="checkbox"/>    | <input type="checkbox"/> | <input type="checkbox"/> |
| <input type="checkbox"/> | <input type="checkbox"/> | Other:                     |                | <input type="checkbox"/> | <input type="checkbox"/> | <input type="checkbox"/> | <input type="checkbox"/>          | <input type="checkbox"/> | <input type="checkbox"/> | <input type="checkbox"/>    | <input type="checkbox"/> | <input type="checkbox"/> |
| <input type="checkbox"/> | <input type="checkbox"/> | Other:                     |                | <input type="checkbox"/> | <input type="checkbox"/> | <input type="checkbox"/> | <input type="checkbox"/>          | <input type="checkbox"/> | <input type="checkbox"/> | <input type="checkbox"/>    | <input type="checkbox"/> | <input type="checkbox"/> |
| <input type="checkbox"/> | <input type="checkbox"/> | Other:                     |                | <input type="checkbox"/> | <input type="checkbox"/> | <input type="checkbox"/> | <input type="checkbox"/>          | <input type="checkbox"/> | <input type="checkbox"/> | <input type="checkbox"/>    | <input type="checkbox"/> | <input type="checkbox"/> |
| <input type="checkbox"/> | <input type="checkbox"/> | Other:                     |                | <input type="checkbox"/> | <input type="checkbox"/> | <input type="checkbox"/> | <input type="checkbox"/>          | <input type="checkbox"/> | <input type="checkbox"/> | <input type="checkbox"/>    | <input type="checkbox"/> | <input type="checkbox"/> |
| <input type="checkbox"/> | <input type="checkbox"/> | Other:</                   |                |                          |                          |                          |                                   |                          |                          |                             |                          |                          |



# Chemical Inventory

## Submit an Updated Chemical Inventory Form

- **Amount Typically Used, Handled, Stored, or Received has Changed**
- **A New Material is Added**
- **Use of a Material is Discontinued**



# Chemical Inventory

58

Email to

[stormwater@lawa.org](mailto:stormwater@lawa.org)



# Chemical Inventory

59

Tenant's Name: \_\_\_\_\_

Tenant's Address: \_\_\_\_\_



# Chemical Inventory



| A. Used On-Site?         |                          | Chemical                   |
|--------------------------|--------------------------|----------------------------|
| Yes                      | No                       |                            |
| <input type="checkbox"/> | <input type="checkbox"/> | Acids                      |
| <input type="checkbox"/> | <input type="checkbox"/> | Anti-freeze                |
| <input type="checkbox"/> | <input type="checkbox"/> | AV Gas                     |
| <input type="checkbox"/> | <input type="checkbox"/> | Brake Fluids               |
| <input type="checkbox"/> | <input type="checkbox"/> | Concrete Materials         |
| <input type="checkbox"/> | <input type="checkbox"/> | Caustic Solution           |
| <input type="checkbox"/> | <input type="checkbox"/> | Degreasers                 |
| <input type="checkbox"/> | <input type="checkbox"/> | Deodorizing Solution       |
| <input type="checkbox"/> | <input type="checkbox"/> | Diesel                     |
| <input type="checkbox"/> | <input type="checkbox"/> | Engine Oil                 |
| <input type="checkbox"/> | <input type="checkbox"/> | Fertilizer                 |
| <input type="checkbox"/> | <input type="checkbox"/> | Foaming Agent (AFFF)       |
| <input type="checkbox"/> | <input type="checkbox"/> | Freon                      |
| <input type="checkbox"/> | <input type="checkbox"/> | Fuel Additive              |
| <input type="checkbox"/> | <input type="checkbox"/> | Fungicide                  |
| <input type="checkbox"/> | <input type="checkbox"/> | Gasoline                   |
| <input type="checkbox"/> | <input type="checkbox"/> | Grease                     |
| <input type="checkbox"/> | <input type="checkbox"/> | H2O Treatment Chemicals    |
| <input type="checkbox"/> | <input type="checkbox"/> | Hydraulic Fluids           |
| <input type="checkbox"/> | <input type="checkbox"/> | Isopropyl Alcohol          |
| <input type="checkbox"/> | <input type="checkbox"/> | Jet A                      |
| <input type="checkbox"/> | <input type="checkbox"/> | Motor Oil                  |
| <input type="checkbox"/> | <input type="checkbox"/> | Nutrient                   |
| <input type="checkbox"/> | <input type="checkbox"/> | Oily Rags                  |
| <input type="checkbox"/> | <input type="checkbox"/> | Paint                      |
| <input type="checkbox"/> | <input type="checkbox"/> | Pesticide                  |
| <input type="checkbox"/> | <input type="checkbox"/> | Herbicide                  |
| <input type="checkbox"/> | <input type="checkbox"/> | Propylene Glycol (Deicing) |
| <input type="checkbox"/> | <input type="checkbox"/> | Soap                       |
| <input type="checkbox"/> | <input type="checkbox"/> | Solvents                   |
| <input type="checkbox"/> | <input type="checkbox"/> | Transmission Fluids        |
| <input type="checkbox"/> | <input type="checkbox"/> | Turbine Oil                |
| <input type="checkbox"/> | <input type="checkbox"/> | Waste Absorbent            |
| <input type="checkbox"/> | <input type="checkbox"/> | Waste Anti-freeze          |
| <input type="checkbox"/> | <input type="checkbox"/> | Waste Fuel                 |
| <input type="checkbox"/> | <input type="checkbox"/> | Waste Hydraulics           |
| <input type="checkbox"/> | <input type="checkbox"/> | Waste Oil                  |
| <input type="checkbox"/> | <input type="checkbox"/> | Waste Oil Filters          |
| <input type="checkbox"/> | <input type="checkbox"/> | Waste Paint                |
| <input type="checkbox"/> | <input type="checkbox"/> | Waste Solvents             |
| <input type="checkbox"/> | <input type="checkbox"/> | Other:                     |
| <input type="checkbox"/> | <input type="checkbox"/> | Other:                     |
| <input type="checkbox"/> | <input type="checkbox"/> | Other:                     |

# Chemical Inventory

| Chemical     | Quantity/Units | B. Stored on Site?       |                          |                          | C. Secondary Containment Present? |                          |                          | D. Contact with Discharges? |                          |                          |
|--------------|----------------|--------------------------|--------------------------|--------------------------|-----------------------------------|--------------------------|--------------------------|-----------------------------|--------------------------|--------------------------|
|              |                | Inside                   | Out Covered              | Out Uncovered            | Yes                               | No                       | N/A                      | Yes                         | No                       | N/A                      |
| Acids        |                | <input type="checkbox"/> | <input type="checkbox"/> | <input type="checkbox"/> | <input type="checkbox"/>          | <input type="checkbox"/> | <input type="checkbox"/> | <input type="checkbox"/>    | <input type="checkbox"/> | <input type="checkbox"/> |
| Anti-freeze  |                | <input type="checkbox"/> | <input type="checkbox"/> | <input type="checkbox"/> | <input type="checkbox"/>          | <input type="checkbox"/> | <input type="checkbox"/> | <input type="checkbox"/>    | <input type="checkbox"/> | <input type="checkbox"/> |
| AV Gas       |                | <input type="checkbox"/> | <input type="checkbox"/> | <input type="checkbox"/> | <input type="checkbox"/>          | <input type="checkbox"/> | <input type="checkbox"/> | <input type="checkbox"/>    | <input type="checkbox"/> | <input type="checkbox"/> |
| Brake Fluids |                | <input type="checkbox"/> | <input type="checkbox"/> | <input type="checkbox"/> | <input type="checkbox"/>          | <input type="checkbox"/> | <input type="checkbox"/> | <input type="checkbox"/>    | <input type="checkbox"/> | <input type="checkbox"/> |



# Chemical Inventory

| Chemical     | Quantity/Units |
|--------------|----------------|
|              |                |
| Acids        |                |
| Anti-freeze  |                |
| AV Gas       |                |
| Brake Fluids |                |



# Chemical Inventory

| Chemical     | B. Stored on Site?       |                          |                          |
|--------------|--------------------------|--------------------------|--------------------------|
|              | Inside                   | Out Covered              | Out Uncovered            |
| Acids        | <input type="checkbox"/> | <input type="checkbox"/> | <input type="checkbox"/> |
| Anti-freeze  | <input type="checkbox"/> | <input type="checkbox"/> | <input type="checkbox"/> |
| AV Gas       | <input type="checkbox"/> | <input type="checkbox"/> | <input type="checkbox"/> |
| Brake Fluids | <input type="checkbox"/> | <input type="checkbox"/> | <input type="checkbox"/> |



# Chemical Inventory

| Chemical     | C. Secondary Containment Present? |                          |                          |
|--------------|-----------------------------------|--------------------------|--------------------------|
|              | Yes                               | No                       | N/A                      |
| Acids        | <input type="checkbox"/>          | <input type="checkbox"/> | <input type="checkbox"/> |
| Anti-freeze  | <input type="checkbox"/>          | <input type="checkbox"/> | <input type="checkbox"/> |
| AV Gas       | <input type="checkbox"/>          | <input type="checkbox"/> | <input type="checkbox"/> |
| Brake Fluids | <input type="checkbox"/>          | <input type="checkbox"/> | <input type="checkbox"/> |





# Chemical Inventory

| Chemical     | D. Contact with Discharges? |                          |                          |
|--------------|-----------------------------|--------------------------|--------------------------|
|              | Yes                         | No                       | N/A                      |
| Acids        | <input type="checkbox"/>    | <input type="checkbox"/> | <input type="checkbox"/> |
| Anti-freeze  | <input type="checkbox"/>    | <input type="checkbox"/> | <input type="checkbox"/> |
| AV Gas       | <input type="checkbox"/>    | <input type="checkbox"/> | <input type="checkbox"/> |
| Brake Fluids | <input type="checkbox"/>    | <input type="checkbox"/> | <input type="checkbox"/> |



# Break – 10 Minutes



# Best Management Practices



# Best Management Practices

- **Definition**

**“A practice, or combination of practices, that is determined by a State (or designated area wide planning agency) after problem assessment, examination of alternative practices, and appropriate public participation to be the most effective, practicable (including technological, economic, and institutional considerations) means of preventing or reducing the amount of pollution generated by nonpoint sources to a level compatible with water quality goals.”**



# Best Management Practices

- **Order 2014-0057-DWQ General Permit for Storm Water Discharges Association with Industrial Activities**

**“The Discharger shall, to the extent feasible, implement and maintain all of the following minimum BMPs to reduce or prevent pollutants in industrial storm water discharges.”**

- **State Water Board requires that BMPs be implemented, documented and kept in the records!**

## Source Control

|      |  |
|------|--|
| SC1  | ELIMINATION OF NON-STORM WATER DISCHARGES TO STORM DRAIN |
| SC2  | AIRCRAFT, GROUND VEHICLE AND EQUIPMENT MAINTENANCE       |
| SC3  | AIRCRAFT, GROUND VEHICLE, AND EQUIPMENT FUELING          |
| SC4  | AIRCRAFT, GROUND VEHICLE AND EQUIPMENT WASHING           |
| SC5  | AIRCRAFT DEICING/ANTI-ICING                              |
| SC6  | OUTDOOR MATERIAL HANDLING                                |
| SC7  | OUTDOOR STORAGE OF SIGNIFICANT MATERIAL                  |
| SC8  | WASTE/GARBAGE HANDLING AND DISPOSAL                      |
| SC9  | BUILDING AND GROUNDS MAINTENANCE                         |
| SC10 | STORM WATER POLLUTION PREVENTION EDUCATION               |
| SC11 | LAVATORY SERVICE OPERATIONS                              |
| SC12 | OUTDOOR WASHDOWN/SWEEPING                                |
| SC13 | FIRE FIGHTING FOAM DISCHARGE                             |
| SC14 | POTABLE WATER SYSTEM FLUSHING                            |
| SC15 | RUNWAY RUBBER REMOVAL                                    |

# BMPs

## Treatment Control

TC1 OIL/WATER SEPARATORS

## Spill Response

SR1 EMERGENCY SPILL CLEANUP PLANS

## New Addition: CASQA BMPs

SC40 CONTAMINATED OR ERODIBLE AREAS

SC44 DRAINAGE SYSTEM MAINTENANCE



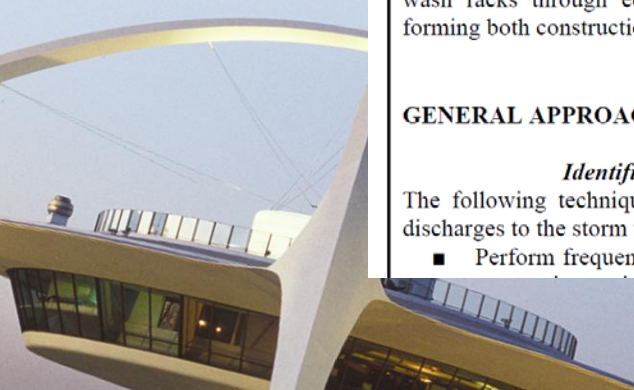


LAX

Los Angeles World Airports

Rules and Regulations

| LOS ANGELES WORLD AIRPORTS   |   |
|--|---|
| <b>SC1</b>   | <b>ELIMINATION OF NON-STORM WATER DISCHARGES TO STORM DRAINS</b>  |
| <p><b>PURPOSE:</b></p> <p><i>Existing discharges:</i> Eliminate non-storm water discharges to the storm water collection system. Non-storm water discharges can be classified as follows: 1) <i>Activity-based</i> (subtle), and 2) <i>Overt</i> (hard pipe connection). Activity-based non-storm water discharges may include: wash water, deicing fluids, and spillage. Overt non-storm water discharges may include: process wastewater, treated cooling water, and sanitary wastewater.</p> <p><i>Prevention of illicit connections:</i> Prevent improper physical connections to the storm drain system from sanitary sewers, floor drains, industrial process discharge lines, and wash racks through education, developing project approval conditions, and performing both construction phase and post-construction inspections.</p> <p><b>GENERAL APPROACH:</b></p> <p style="text-align: center;"><i>Identification of <u>Activity-Based</u> (Subtle) Discharges:</i></p> <p>The following techniques may be used to identify activity-based non-storm water discharges to the storm water collection system:</p> <ul style="list-style-type: none"> <li>■ Perform frequent activity inspections to identify non-storm water discharges -</li> </ul> | <p><b>TARGETED ACTIVITIES</b></p> <ul style="list-style-type: none"> <li>All Maintenance</li> <li>All Fueling</li> <li>All Washing</li> <li>Equipment Cleaning</li> <li>Cargo Handling</li> <li>All Storage</li> <li>Painting/Stripping</li> <li>Floor Washdowns</li> <li>Aircraft Deicing/Anti-Icing</li> <li>Garbage Collection</li> <li>Aircraft Lavatory Service</li> <li>Fire Fighting Equip. Testing</li> <li>Potable Water System Flush</li> <li>Runway Rubber Removal</li> </ul> <p><b>TARGETED POLLUTANTS</b></p> <ul style="list-style-type: none"> <li>Oil and Grease</li> <li>Vehicle Fluids</li> <li>Fuel</li> <li>Solvents/Cleaning Sol.</li> <li>Deicing/Anti-Icing Fluid</li> </ul> |





# BMPs

- LAX Rules & Regulations
  - <http://www.lawa.org/airops.aspx?id=862&linkidentifier=id&itemid=862>
- LAWA SWPPPs
  - [https://www.lawa.org/welcome\\_lawa.aspx?id=1864](https://www.lawa.org/welcome_lawa.aspx?id=1864)



# Best Management Practices

| Description of BMPs<br>(Reference BMP Fact Sheet<br>Number); SWPPP Table 4.1<br>shows summary of the BMPs<br>for each airport (List below<br>shows BMPs implemented at<br>LAWA and may not be<br>airport specific.) | A. Facility<br>BMPs (Check<br>All<br>Applicable);<br>Previously<br>reported<br>BMPs are<br>located in<br>Table 4.2 of<br>the SWPPP | B. Change in<br>BMP use on<br>facility? <b>New</b><br>or <b>Eliminated</b><br>Use | C. Implementation Location (Check all Applicable) |   |                              |   | D.<br>Implementation<br>Frequency<br><br>Routine<br>(Describe:<br><b>Daily, Weekly,</b><br><b>Monthly,</b><br><b>Others, or As</b><br><b>Needed</b> ) | E. BMP<br>Deficient?<br><br><b>Yes</b> (describe<br>in<br>"Comments")<br>or <b>No</b> or Not<br>Applicable -<br><b>NA</b> | F. BMP Comments (Corrective<br>Actions); Attach Any Supporting<br>Photos (including description) |
|---|--|---|---|---|------------------------------|---|---|---|--|
|   |  |   | Outdoor<br>Industrial<br>Activities<br>Areas      | Outdoor<br>Industrial<br>Equipment<br>and<br>Storage<br>Areas | Chemical<br>Storage<br>Areas | Others (Describe<br>all other potential<br>source of<br>industrial<br>pollutants) |   |   |  |
| Elimination of NSWD<br>(LAWA SCI); <b>Illicit<br/>Connection</b>  |  |   |   |   |                              |   |   |   |  |
| Aircraft, Ground Vehicle,<br>and Equipment Maintenance<br>(LAWA SC2)  |  |   |   |   |                              |   |   |   |  |
| Aircraft, Vehicle and<br>Equipment Fueling (LAWA<br>SC3)  |  |   |   |   |                              |   |   |   |  |
| Aircraft, Vehicle and<br>Equipment Washing (SC4)  |  |   |   |   |                              |   |   |   |  |
| Aircraft Deicing (SC5)  |  |   |   |   |                              |   |   |   |  |
| Outdoor Material Handling<br>(SC6)  |  |   |   |   |                              |   |   |   |  |
| Outdoor Storage of<br>Significant Material (SC7);<br><b>Storage Tanks and<br/>Uncovered Outdoor Storage</b>   |  |   |   |   |                              |   |   |   |  |
| Waste Handling and Disposal<br>(SC8); <b>Housekeeping and<br/>Uncovered Dumpsters</b>   |  |   |   |   |                              |   |   |   |  |
| Building and Grounds<br>Maintenance (SC9);<br><b>Housekeeping</b>   |  |   |   |   |                              |   |   |   |  |
| Storm Water Pollution<br>Prevention (SC10); <b>Employee<br/>awareness training and<br/>recordkeeping<br/>Education</b>  |  |   |   |   |                              |   |   |   |  |
| Lavatory Service Operations<br>(SC11)   |  |   |   |   |                              |   |   |   |  |
| Outdoor<br>Washdown/Sweeping (SC12);<br><b>Stains on pavement/concrete</b>  |  |   |   |   |                              |   |   |   |  |
| Fire Fighting Foam<br>Discharge (SC13)  |  |   |   |   |                              |   |   |   |  |
| Potable Water System<br>Flushing (SC14)   |  |   |   |   |                              |   |   |   |  |
| Runway Rubber Removal<br>(SC15)   |  |   |   |   |                              |   |   |   |  |
| Oil/Water Separators<br>(LAWA TC1)  |  |   |   |   |                              |   |   |   |  |
| Emergency Spill Cleanup<br>Plan (LAWA SRI); <b>Spill kits<br/>and Plan Posted</b>   |  |   |   |   |                              |   |   |   |  |
| Contaminated or Erodible<br>Surfaces (CASQA SC-40)  |  |   |   |   |                              |   |   |   |  |
| Drainage System<br>Maintenance (CASQA SC-<br>44)  |  |   |   |   |                              |   |   |   |  |
| Wet Pond (CASQA - TC-20)  |  |   |   |   |                              |   |   |   |  |
| Extended Detention Basin<br>(CASQA TC-22)   |  |   |   |   |                              |   |   |   |  |
| Media Filter (CASQA TC-<br>40)  |  |   |   |   |                              |   |   |   |  |
| Gravity Separator (CASQA<br>MP-51)  |  |   |   |   |                              |   |   |   |  |



# Best Management Practices

## LOS ANGELES WORLD AIRPORTS

**SC1**

**ELIMINATION OF NON-STORM WATER  
DISCHARGES TO STORM DRAINS**

- **Target Group: EVERYONE**
- **Target Pollutants: EVERYTHING**



# Best Management Practices

## LOS ANGELES WORLD AIRPORTS

**SC1**

### **ELIMINATION OF NON-STORM WATER DISCHARGES TO STORM DRAINS**

- **Key Approaches:**
  - Assessments and Enforcement
  - Training Employees
  - Education Vendors/Public



# Best Management Practices

## LOS ANGELES WORLD AIRPORTS

SC2

### AIRCRAFT, GROUND VEHICLE AND EQUIPMENT MAINTENANCE

- **Target Group:** Facilities Performing Maintenance Activity/ies.
- **Key Approaches**
  - Conduct Maintenance Indoors
  - Prevent Discharges to the Storm Drain
  - Clean Catch Basins
  - Collect and Properly Dispose All Fluids

# Best Management Practices

## LOS ANGELES WORLD AIRPORTS

### SC3 AIRCRAFT, GROUND VEHICLE, AND EQUIPMENT FUELING

- **Target Group:** Facilities performing ANY fueling activity.
- **Key Approaches:**
  - Berm Fueling Area
  - Dry Method for Spill Clean Ups
  - Install Proper Fueling Equipment

# Best Management Practices

## LOS ANGELES WORLD AIRPORTS

### SC4 AIRCRAFT, GROUND VEHICLE AND EQUIPMENT WASHING

- **Target Group:** Facilities Performing Washing or Degreasing Activity/ies
- **Key Approaches**
  - Use Designated Area
  - Use Dry Washing Techniques
  - Recycle wash water or discharge appropriately
  - Cover catch basins
  - Provide training

# Best Management Practices

## LOS ANGELES WORLD AIRPORTS

SC5

### AIRCRAFT DEICING/ANTI-ICING

- **Target Group:** Facility with De-Icing Activity
- **Key Approaches:**
  - Perform in designated areas only
  - Apply only required amounts of fluid
  - Clean ramp area when done
  - Implement forthcoming recommendations of FAA



# Best Management Practices

LOS ANGELES WORLD AIRPORTS

SC6

OUTDOOR MATERIAL HANDLING

- **Target Group:**
  - Cargo Handling
  - Fuel Storage
  - Chemical Storage
  - Equipment Storage

# Best Management Practices

## LOS ANGELES WORLD AIRPORTS

SC6

### OUTDOOR MATERIAL HANDLING

- **Key Approaches:**
  - Conduct Loading/Unloading Under Cover
  - Transfer Materials in Paved Areas
  - Clean Up Spills



# Best Management Practices

## LOS ANGELES WORLD AIRPORTS

SC7

### OUTDOOR STORAGE OF SIGNIFICANT MATERIAL

- **Target Group:**
  - Aircraft/Vehicle/Equipment Maintenance
  - Aircraft/Vehicle Fueling
  - Fuel/Chemical/ Equipment Storage
  - Cargo Handling

# Best Management Practices

## LOS ANGELES WORLD AIRPORTS

SC7

### OUTDOOR STORAGE OF SIGNIFICANT MATERIAL

- **Key Approaches**

- Store materials indoors or under cover
- Store drums/ containers on pallets
- Provide berming or secondary containment
- Develop/implement an SPCC, if required
- Perform and document periodic inspections

# Best Management Practices

LOS ANGELES WORLD AIRPORTS

SC8

WASTE/GARBAGE HANDLING AND DISPOSAL

- **Target Group:**
  - Fuel/Chemical Storage
  - Painting/Stripping
  - Garbage Collection



# Best Management Practices

LOS ANGELES WORLD AIRPORTS

SC8

WASTE/GARBAGE HANDLING AND DISPOSAL

- **Key Approaches**

- Cover Waste Storage Areas
- Recycle Materials
- Inspect & Clean Waste Storage Areas
- Berm Waste Storage Areas
- Clean Dumpsters in Designated Areas
- Properly Dispose of Liquids

# Best Management Practices

## LOS ANGELES WORLD AIRPORTS

SC9

### BUILDING AND GROUNDS MAINTENANCE

- **Target Group:** Facilities maintaining Building and/or Grounds
- **Key Approaches**
  - Clean and Sweep Paved Surfaces
  - Clean Catch Basins
  - Manage Use of Pesticides/Herbicides/Fertilizers

# Best Management Practices

## LOS ANGELES WORLD AIRPORTS

SC10

STORM WATER POLLUTION PREVENTION EDUCATION

- **Target Group: EVERYONE**
- **Key Approaches**
  - Perform inspections and enforcement
  - Provide training for employees
  - Promote education of vendors/public



# Best Management Practices

## LOS ANGELES WORLD AIRPORTS

SC11

### LAVATORY SERVICE OPERATIONS

- **Target Group:** Facilities with aircraft lavatory service performed on site and/or lavatory truck cleanout/backflushing.



# Best Management Practices

LOS ANGELES WORLD AIRPORTS

SC11

LAVATORY SERVICE OPERATIONS

- **Key Approaches**

- Discharge Only at Triturator Facilities
- Utilize Buckets/Pans
- Cleanout/Backflush Only at Triturator Facilities
- Spill Kit

# Best Management Practices

## LOS ANGELES WORLD AIRPORTS

SC12

### OUTDOOR WASHDOWN/SWEEPING

- **Target Group:** Facilities performing Apron/Ramp/Outdoor Washing/Scrubbing/Wash-down
- **KEY APPROACHES**
  - Collect and discharge wash water to the sewer
  - Use "dry" sweeping techniques
  - Dispose of sweepings

# Best Management Practices

## LOS ANGELES WORLD AIRPORTS

SC13

### FIRE FIGHTING FOAM DISCHARGE

- **Target Group:** Fire Fighting Equipment Testing and Flushing
- **Key Approaches**
  - Conduct Tests in Designated Areas
  - Properly Dispose/Recycle Foam Discharge
  - Service Sump Regularly

# Best Management Practices

## LOS ANGELES WORLD AIRPORTS

SC14

### POTABLE WATER SYSTEM FLUSHING

- **Target Group:** Facilities cleaning/washing aircraft/water truck potable water system
- **KEY APPROACHES**
  - Flush in Designated Areas
  - Collect Discharge and Discharge Sanitary Sewer

# Best Management Practices

## LOS ANGELES WORLD AIRPORTS

SC15

### RUNWAY RUBBER REMOVAL

- **Target Group:** Facilities Performing Runway Rubber Removal
- **KEY APPROACHES**
  - Use Filter Fabric Over Culverts
  - Use Manual/Mechanical Methods to Remove Particulates

# Best Management Practices

## LOS ANGELES WORLD AIRPORTS

TC1

### OIL/WATER SEPARATORS

- **Target Group: Facilities Performing...**
  - Aircraft/Vehicle/Equipment Maintenance/Fueling/Washing/Degreasing
  - Fuel/Chemical Storage
  - Cargo Handling

# Best Management Practices

## LOS ANGELES WORLD AIRPORTS

TC1

### OIL/WATER SEPARATORS

- **KEY APPROACHES**

- Frequently inspect and clean separators
- Replace absorbent pads as needed





# Best Management Practices

## LOS ANGELES WORLD AIRPORTS

SR1

### EMERGENCY SPILL CLEANUP PLANS

- **Target Group: Facilities Performing...**
  - Aircraft/Vehicle/Equipment Maintenance/Fueling/Washing/Degreasing
  - Fuel/Chemical Storage
  - Cargo Handling

# Best Management Practices

## LOS ANGELES WORLD AIRPORTS

SR1

### EMERGENCY SPILL CLEANUP PLANS

- **Key Approaches**

- Develop/Implement SPCC (if required)
- SPCC Training
- Containment/Clean Up Spills
- Spill Kit
- Required Agency Notification

# Best Management Practices

## Contaminated or Erodible Areas SC-40

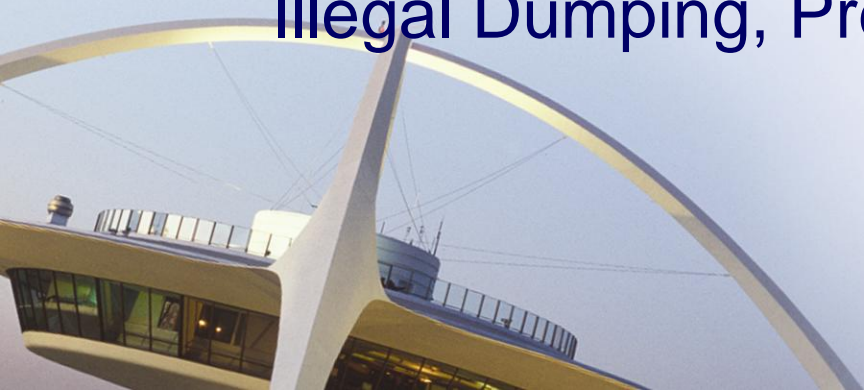
- **Target Group:** Facilities with areas bare of vegetation.
- **Key Approaches:**
  - Erosion and Sediment Control BMPs such as natural vegetation, hydro seeding, geotextiles, watering trucks, or degradable mulches.



# Best Management Practices

## Drainage System Maintenance SC-44

- **Target Group:** Facilities with storm water conveyance systems.
- **Key Approaches**
  - Eliminate Illicit Discharges, Illicit Connections, Illegal Dumping, Prevent and Clean Up Spills

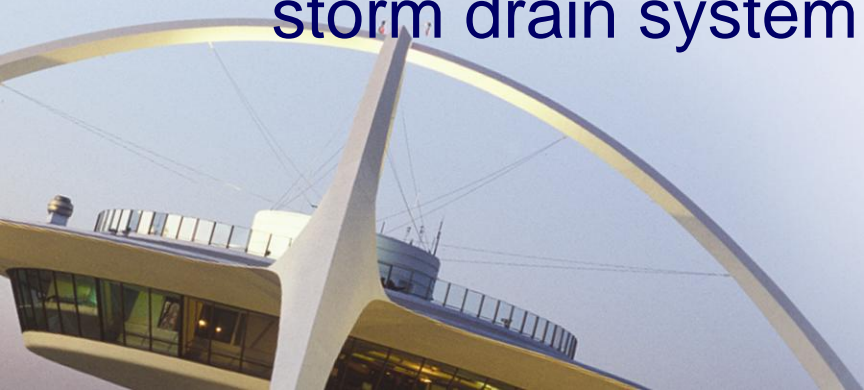


# Best Management Practices

## Extended Detention Basin

## TC-22

- **Target Group:** LAX Facilities in the Imperial Drainage Basin
- **Key Approach**
  - You still can't dump anything you want in the storm drain system



# Best Management Practices

## Media Filter

## TC-40

- **Target Group:** Facilities with Media Filters
- **Key Approach**
  - Maintain and Inspect Regularly



- Think “Storm Water Impact” when you’re surveying your facility.
- When you see a problem, fix it or find someone who can.
- Perform your Dry Weather Observation once a month, complete the form, submit no later than the 5<sup>th</sup> of the following month.
- One email for all forms:  
[stormwater@lawa.org](mailto:stormwater@lawa.org)



# Consequences of Non-Compliance





# Consequences of Non-Compliance<sup>105</sup>

- **Dirty Shop → Unsafe Work Conditions**
- **Inefficient Operations**
- **Vehicle and Equipment Impoundment**
- **Operation Shutdowns**
- **Regulatory Oversight**
- **Non-Renewal of Leases**



# Consequences of Non-Compliance

- **\$1,791.00/Year Permit Fee\***
- **<\$30,000/Year for Monitoring Requirements**
- **<\$10,000/Year Consultant Fees for Annual Reporting**
- **<\$20,000 For a Facility SWPPP**
- **>\$3,000/serious violation/day\***
- **Potential Criminal Penalties**

\* Regional Water Quality Control Board

- LAWA Storm Water Program

– [https://www.lawa.org/  
welcome\\_lawa.aspx?id  
=1864](https://www.lawa.org/welcome_lawa.aspx?id=1864)

- SWPPPs
- Forms
- Permit
- Contact Info



- **BMPs**
  - **LAX Rules & Regulations**
    - <http://www.lawa.org/airops.aspx?id=862&linkidentifier=id&itemid=862>
  - **ONT Rules & Regulations**
    - [http://www.lawa.org/welcome\\_ont.aspx?id=2874](http://www.lawa.org/welcome_ont.aspx?id=2874)
  - **VNY Rules & Regulations**
    - Use LAX Rules & Regs
    - Use VNY SWPPP
  - **California Storm Water Quality Association**
    - **BMP Handbooks**
      - <https://www.casqa.org/resources/bmp-handbooks/industrial-commercial>



- **Robert Freeman – Airport Environmental Manager**  
– 424-646-6474 [rfreeman@lawa.org](mailto:rfreeman@lawa.org)
- **Lin Wang – Storm Water Supervisor**  
– 424-646-6481 [clwang@lawa.org](mailto:clwang@lawa.org)
- **Matt Renaud – LAX Inspector**  
– 424-646-9044 [mrenaud@lawa.org](mailto:mrenaud@lawa.org)
- **Somvang Meksavanh – LAX/ONT Inspector**  
– 424-646-6492 [smeksavanh@lawa.org](mailto:smeksavanh@lawa.org)
- **Kislev Ang – VNY Inspector**  
– 424-646-6506 [kang@lawa.org](mailto:kang@lawa.org)
- **Environmental General Number 424-646-6500**

# Q&A...

