

Airports Development Group

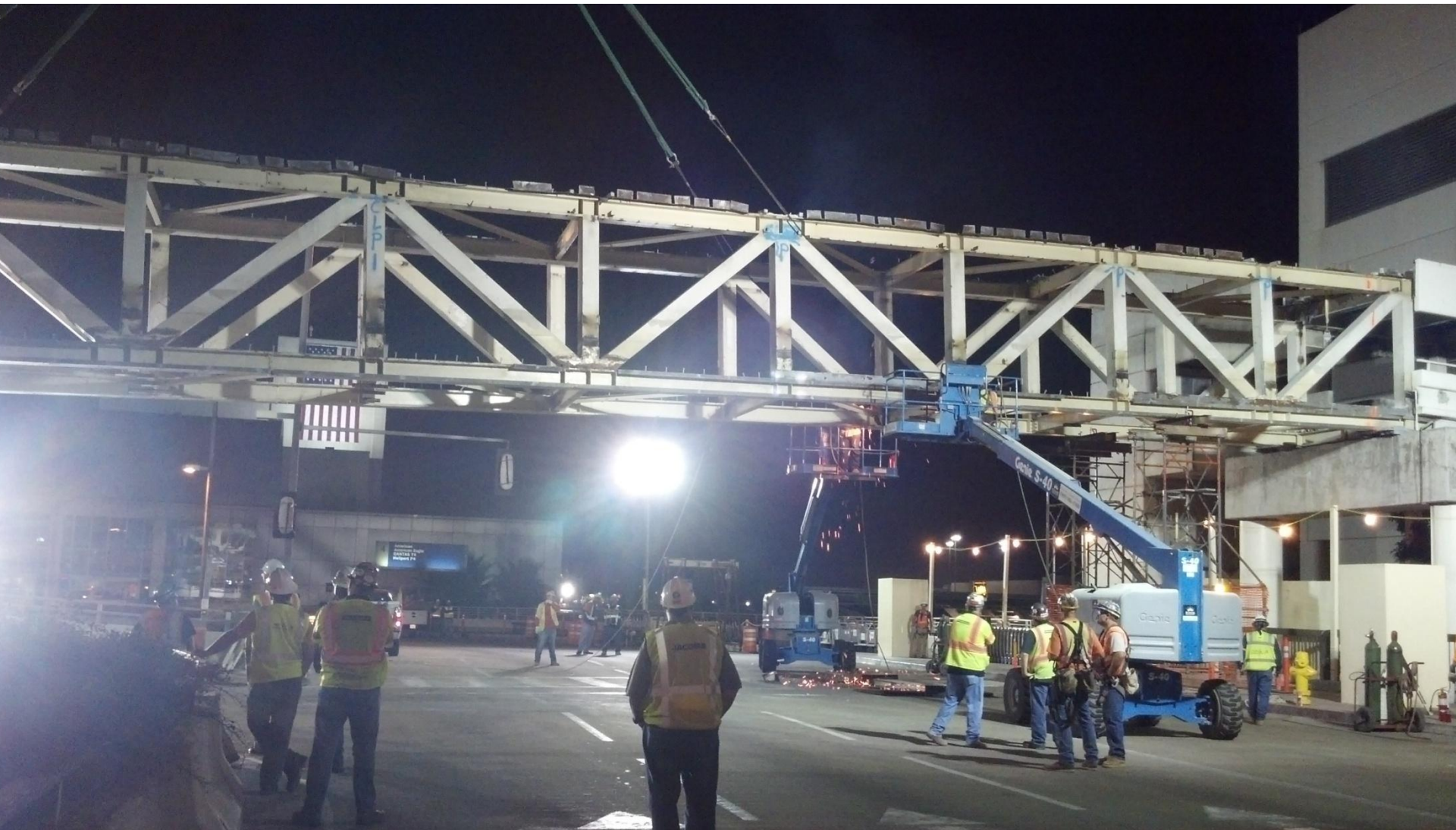
Development Program Update

November 15, 2012



TBIT Pedestrian Bridge Removal

The little-used pedestrian bridge connecting the Tom Bradley International Terminal and Parking Structure 4 being removed as part of the “New Face of the Central Terminal Area” project.



October 3, 2012



TBIT Pedestrian Bridge Removal

The little-used pedestrian bridge connecting the Tom Bradley International Terminal and Parking Structure 4 being removed as part of the “New Face of the Central Terminal Area” project.



October 3, 2012



TBIT Pedestrian Bridge Removal

Before and after the pedestrian bridge removal. New canopies and lighting will enhance the façade of the Tom Bradley International Terminal and will be completed in Spring 2013.

After



Before

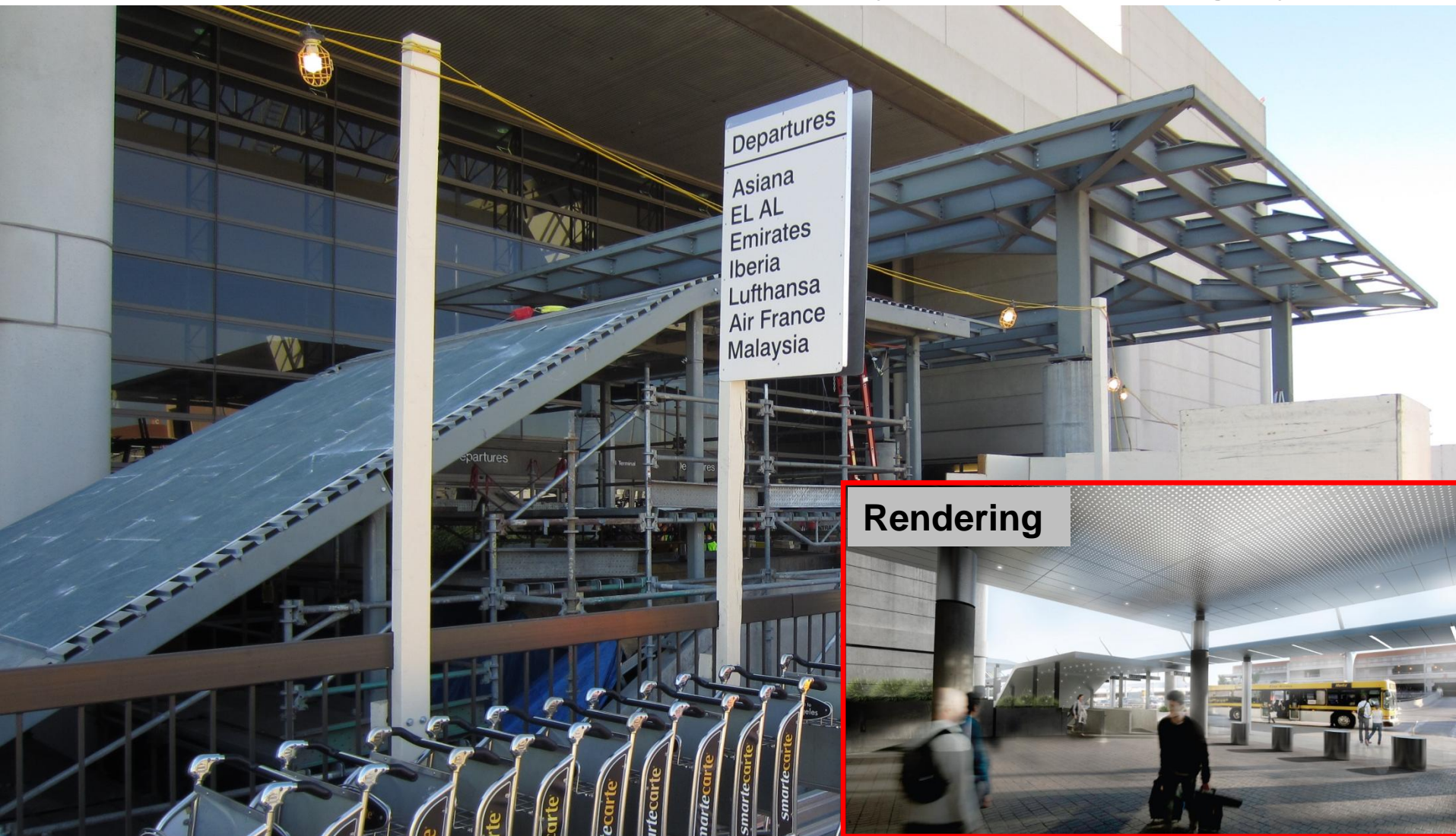


November 13, 2012



The New Tom Bradley International Terminal

Installation of the new canopies over the escalator and north entryway to the Tom Bradley International Terminal ticketing lobby.



Rendering

November 6, 2012



The New Tom Bradley International Terminal

The "Great Hall" which will consist of retail and dining establishments for departing passengers.



November 8, 2012



The New Tom Bradley International Terminal

Informally known as the “wedding cake”, these tiered levels in the Great Hall will be where passengers can relax and dine while waiting for their departure flight.



November 6, 2012



The New Tom Bradley International Terminal

These beams will support the Integrated Environmental Media System (IEMS) that will enhance the passenger experience with electronic art and images that will constantly change.





The New Tom Bradley International Terminal

The ceiling wraps are in place hiding the steel beams underneath. The large scaffolding needed by the workers to install the ceiling wraps is in the process of coming down.



November 6, 2012

The New Tom Bradley International Terminal

Another view of the ceiling and IEMS support beams prior to being wrapped in white coverings.





The New Tom Bradley International Terminal

A key architectural design feature of the new terminal is this 7-story lightwell which will draw natural light into the building.





The New Tom Bradley International Terminal

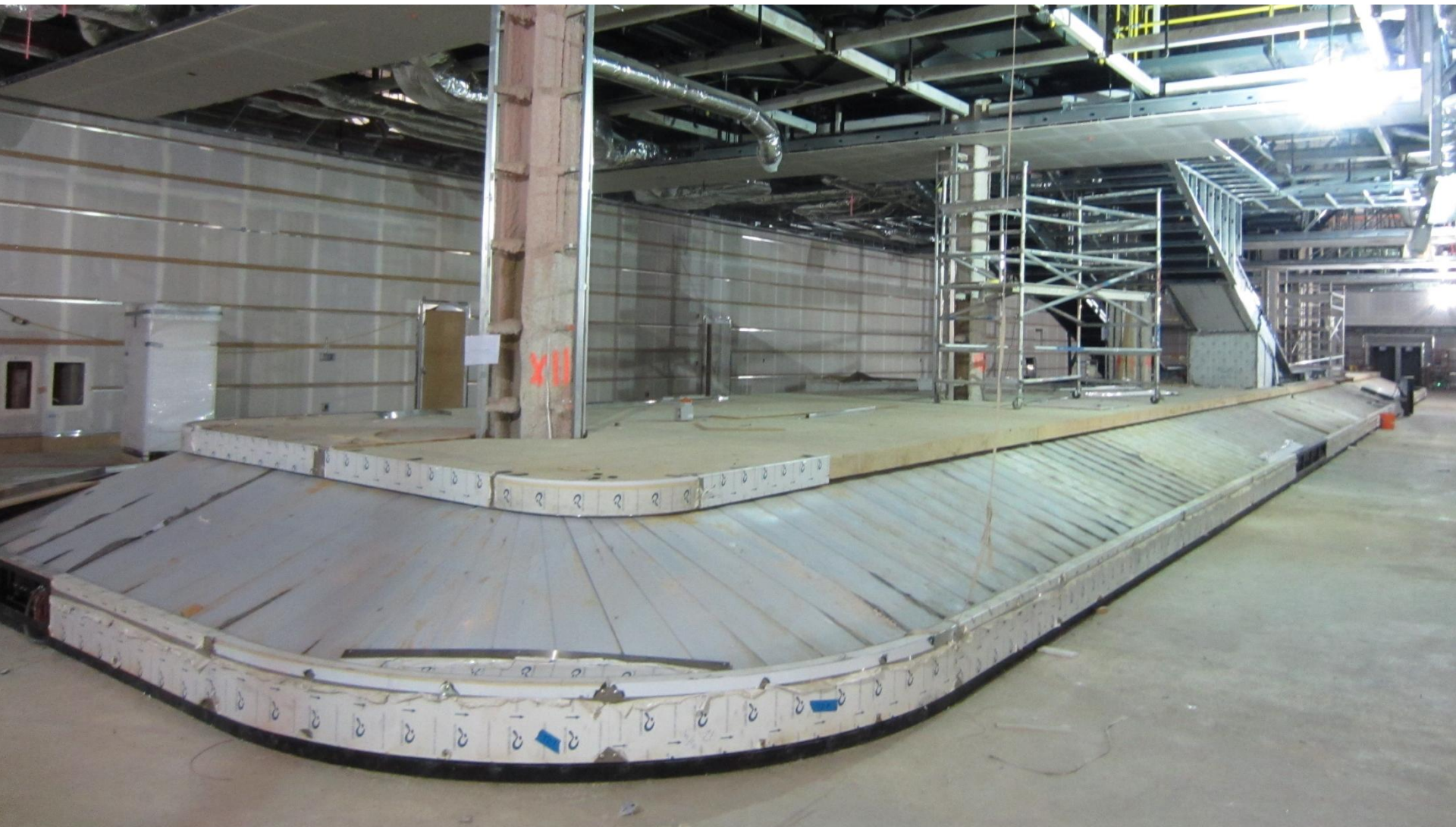
Views of the north lightwell from both top and bottom angles.





The New Tom Bradley International Terminal

One of the eight new large baggage carousels specifically designed to accommodate the large volume of luggage carried by A380 passengers.





The New Tom Bradley International Terminal

View of the south concourse which, like the Great Hall, will open up in mid-2013.





The New Tom Bradley International Terminal

The highlighted area represents the first pieces of steel that were erected for the new Tom Bradley International Terminal in November 2010. Two years later, the exterior is almost complete.

November 9, 2010



October 23, 2012





The New Tom Bradley International Terminal

Aerial view looking towards El Segundo.



November 7, 2012



The New Tom Bradley International Terminal

Aerial view highlighting the height of the "Great Hall" and the large glass walls of the building.



November 7, 2012



The New Tom Bradley International Terminal

An Airbus A380 taxiing northbound on the new Taxilane S as construction continues on the new south concourse.



November 7, 2012



The New Tom Bradley International Terminal

A Boeing 777-300 parked at Gate 134 in the north concourse. This gate opened in September 2012. The adjacent gates (132 and 130) will be opening in the near future.



November 7, 2012

Central Utility Plant Replacement Project

Exterior of the new Central Utility Plant which will replace LAX's existing 50-year old facility.



Central Utility Plant Replacement Project

Underground utility work for the new Central Utility Plant.



November 9, 2012



Central Utility Plant Replacement Project

The new 5-cell cooling tower for the new Central Utility Plant.



November 9, 2012