

IMPROVED AIRCRAFT MAINTENANCE AT LAX

Maintenance facilities at Los Angeles International Airport (LAX) will be consolidated and modernized with the proposed new West Aircraft Maintenance Area Project. The new facility will be located on 75-acres in the southwestern portion of LAX, adjacent to Pershing Drive and south of World Way West.

What new facilities are proposed?

The project would replace existing facilities and consolidate maintenance operations. It includes paved areas for aircraft parking, maintenance hangars, a 300-space employee parking lot, storage, equipment, related facilities, and a ground run-up enclosure (GRE). A GRE is a state-of-the-art structure designed to reduce sound from engine tests, which are currently performed in the open. It is typically a 3-sided unroofed facility, approximately 50 to 60 feet tall, with the open side oriented toward prevailing winds. The GRE will be oriented towards the ocean with the inside walls lined with noise absorbing panels specifically designed to provide sound absorption at the lower frequencies characteristic of jet engine tests. Access to the site will continue to be from World Way West.

What is the purpose of the project?

The proposed new maintenance facility would consolidate and modernize existing facilities. It is designed to provide more efficient and effective maintenance of existing aircraft. It will not increase passenger or gate capacity, and will not increase flights or aircraft operations at LAX. It will also not increase the number of employees on-site or the amount of traffic on local roadways.

What is on the site now?

The project site is currently used as a staging area for airport construction projects. There are soil stockpiles, a rock-crushing station, modular construction trailers serving as offices, parking areas, an airfield access security post, a small LAWA Police Department/Transportation Security Administration dog walking area, and outdoor loading and storage areas.

Is it part of the LAX Specific Plan?

The West Aircraft Maintenance Area Project is consistent with the LAX Specific Plan zoning and development regulations. A Draft Environmental Impact Report (DEIR) will be prepared to analyze any potential impacts associated with it. The public will have opportunities to comment on the project and the environmental analysis, and to have questions answered at community meetings.

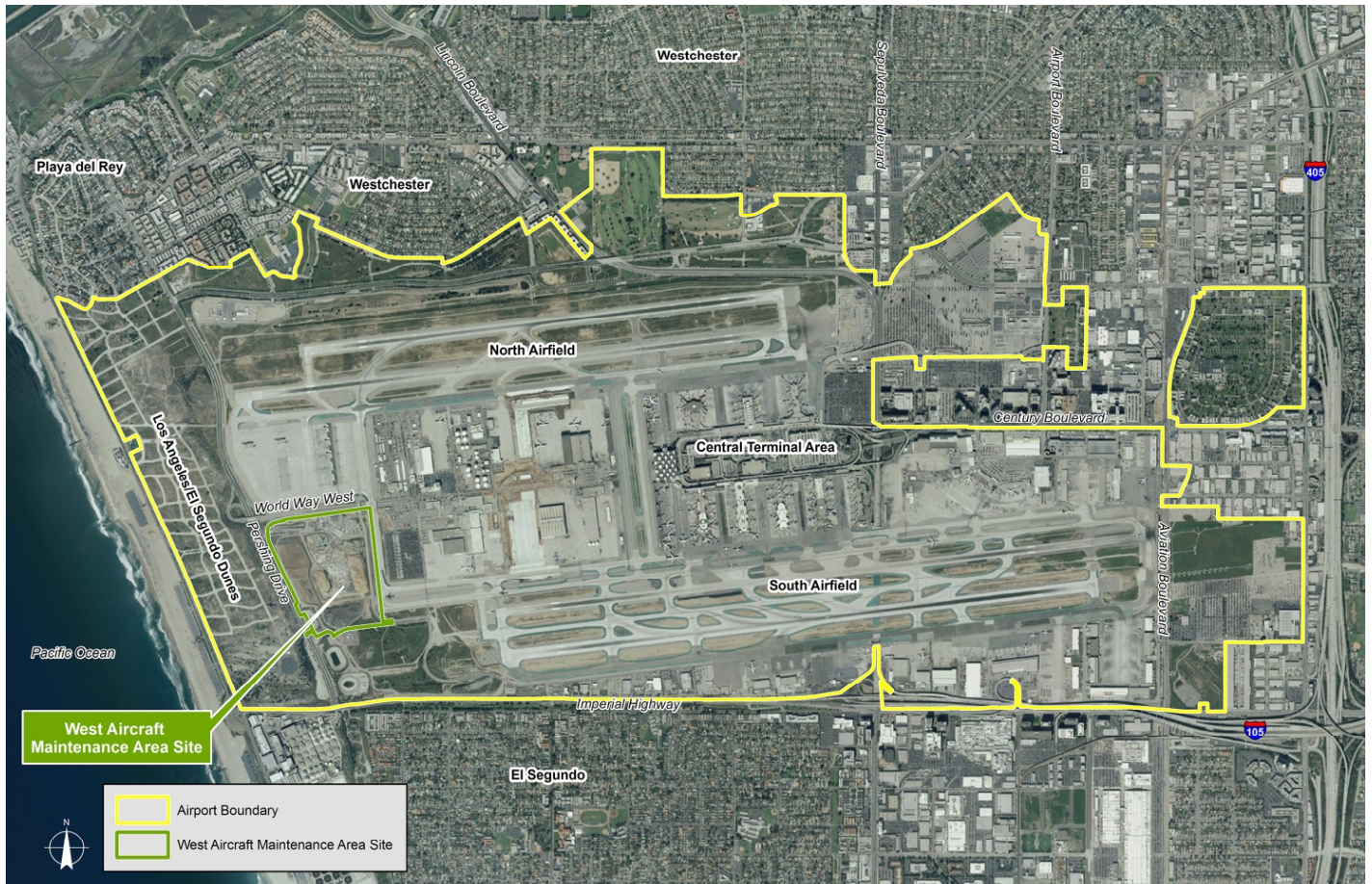
Process and schedule.

A Notice of Preparation indicating that an EIR will be prepared to evaluate the West Aircraft Maintenance Area Project was issued on September 14, 2012 to begin the environmental review process. To allow for additional time for input, LAWA has extended the comment period by 15 days to end on October 30, 2012. The Draft EIR will further analyze any potential environmental impacts which the project may have in the areas of Air Quality, Greenhouse Gas Emissions, Hazards and Hazardous Materials, Hydrology and Water Quality, Land Use and Planning, Noise, and Transportation. The public will have an opportunity to provide comments on any areas of concern at a scoping meeting held on October 4, 2012, and then again when the Draft EIR is completed and circulated for review and comment. A Final EIR that responds to comments on the Draft EIR will then be prepared and presented to the decision makers as they consider approval of the Project. After all applicable approvals are secured, construction would begin and it is estimated that the project would be completed over an eight to ten year period.

*A copy of the Initial Study prepared for the proposed Project is available
at the LAX website at <http://www.ourlax.org>.*

For further information contact: Lisa Trifiletti at ltrifiletti@lawa.org 424.646.5186

Aerial View of Airport



Conceptual Site Plan

