



TBIT Construction News

Volume 3, Issue 6

June 2009

Inside this issue:

Phase D6 Ticketing Lobby 2

Installation of B-20 Directory Signs 2

In-line CTX Installation Phasing 2

In-Line CTX Installation Phasing 3

Baggage Handling Pier Phasing 4

Baggage Handling Pier Phasing 5

TASS BRS HHT 5

Arrivals Lobby Phase 6.1 5

TBIT Construction Photos 6

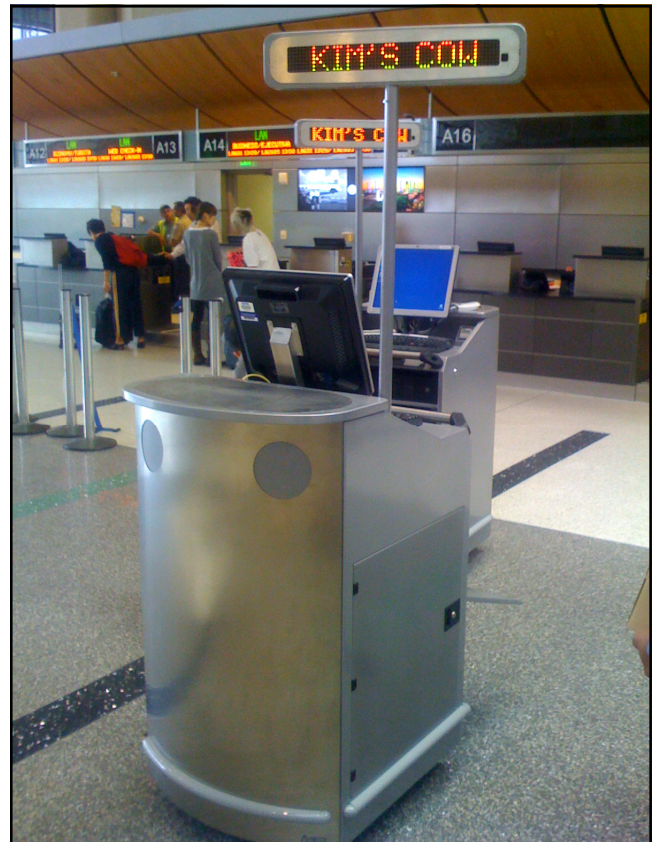
The COWs Are Loose !!!

Six Cute-On-Wheels (COW) units were purchased as part of the TBIT Interior Improvements and Baggage Screening program, and have recently been transferred to LAXTEC for airline use.

The COWs have been kept in the SITA cow pen for over seven months while the logistics of the transfer were being negotiated. SITA is currently checking the COWs for any problems, re-charging the batteries, and making sure they are fit for active duty.

Currently, nine (9) airlines have requested use of a COW to enhance their customer check-in process. Primary COW Keepers and Secondary COW Keepers have been assigned to each COW, and they are scheduled to take procession of the COWs on Tuesday, June 2, 2009.

The COWs are fully equipped CUTE workstations with monitor, keyboard, passport scanner, boarding card printer, bag tag printer, WiFi connection, and a programmable LED sign. The COW also has an 8-hour battery for free-standing operation and a standard power cord to plug into the many floor receptacles located near the head of the queue lines. The COWs have large wheels for easily mobility and a wheel lock system to secure the unit in place at the desired location.



Two COWs waiting for their Cow Keepers

Name That COW Contest

A recent scientific study found that 48% of dairy farmers name their cows, and report that their cows are more contented and perform better (10% more milk) when addressed by name. Therefore, to insure peak performance and a long and happy life, we suggest that the TBIT COWs be named. A dairy cow name search on Goggle found the following most popular names:

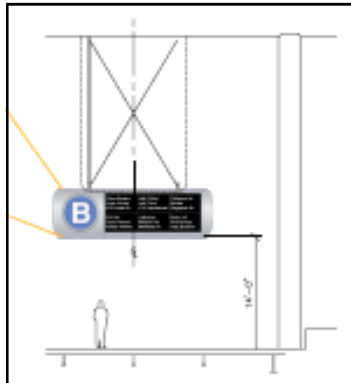
Betsy, Gertrude, Mable, Daisy, Elsie, & Buttercup
Please submit your favorite names to the LAXTEC office for consideration.

Phase D6 Ticketing Lobby

The photo to the right shows progress on installation of the overhead canopy in the Phase D6 ticketing area. The Mega-Pod Screening facility has been dismantled and the CTX machines relocated to the east ends of the A and B aisles, clearing the way for the contractor to construct Phase D6 in a single pass.

Phase D6 is the final phase of the ticket counter renovation, and with the scheduled completion on July 17, 2009, the Departures Lobby will have its full complement of 184 ticketing positions.

The conveyor belt serving the east end bank of ticket counters (TC-16) will remain connected to Sprung I to move bags for those carriers still operating in the Sprung structure.



	China Eastern Copa Airlines El Al Israel Air	LAN (Chile) LAN (Peru) LTU International	Philippine Air Qantas Singapore Air
	EVA Air Japan Airlines Korean Airlines	Lufthansa Malaysia Air Mexicana Air	Swiss Int'l Thai Airways Varig Brazilian

Installation of the B20 Directory Signs

The installation of the first of three B20 Directory signs has started on Aisle A. Subsequent signs will be installed on Aisles B and C. These signs are intended to provide passengers entering the Departure Lobby with airline ticket counter location information. The signs have six (6) LCD signs on each side to display information on airlines assigned ticketing positions on that aisle. The programming is flexible and can display airline names as shown above, or each screen can be programmed to display information from the airline's backwall LCD screen, or any other display arrangement.

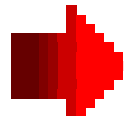
In addition to the B20 signs at each aisle, there will be six (6) floor mounted Directory signs, one at the east end of each bank of ticket counters.

In-line CTX Installation Phasing

The chart on Page 3 shows the latest schedule for installation and commissioning of the in-line CTX machines in the new Baggage Handling system. As shown, the first phase will be the completion of the "upper loop" of the South Matrix Building and the two (2) in-line CTX machines. Completion of phase I in October 2009 will provide a new in-line screening system for Interline Recheck Baggage, thus allowing for the removal of the four (4) L3 machines currently installed in the Arrivals Lobby.

Phase 2 will be the completion and commissioning of the nine (9) in-line CTX machines in the North Matrix Building. Completion of phase 2 will allow in-line screening of Departure Lobby Checked Baggage beginning in early January 2010 and allow for removal of the CTX machines currently installed in the Departure Lobby.

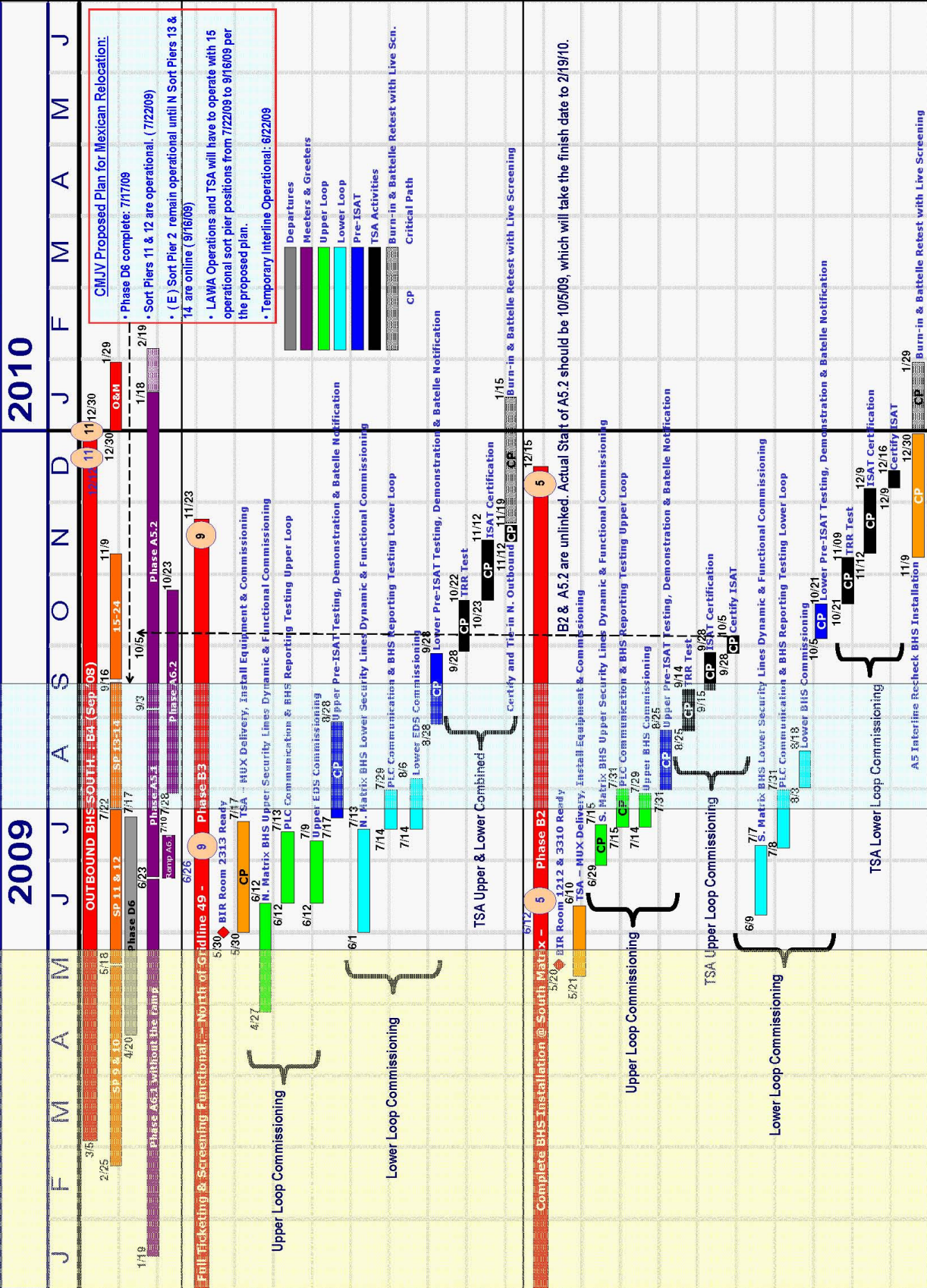
Phase 3 will complete the "lower loop" of the South Matrix Building and thus complete the in-line CTX screening system for the Interline Recheck Baggage. Project complete on January 29, 2010.

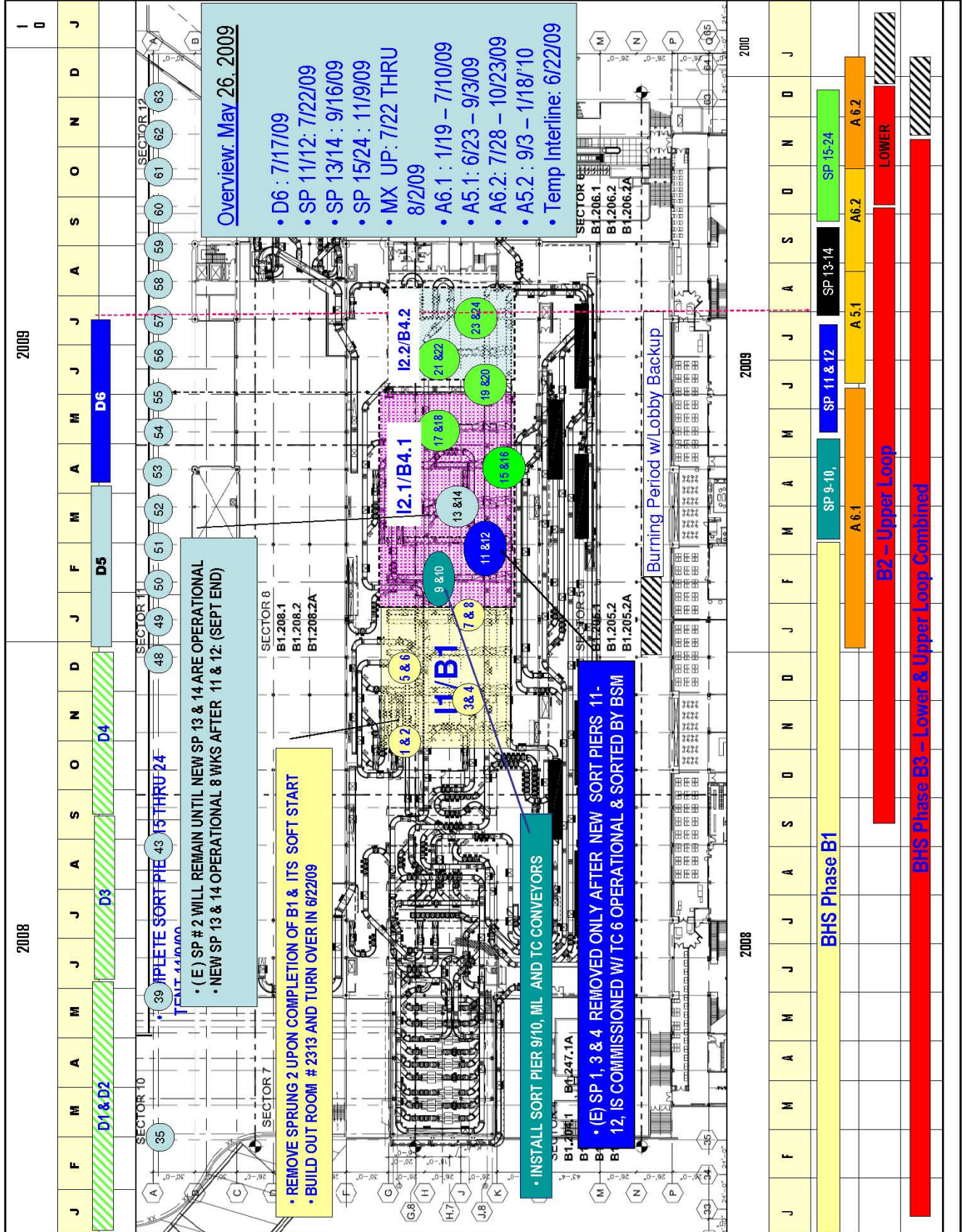




CMJV: B2- B3 : COMMISSIONING- Current Plan
 CMJV: B4 – SORT PIERS – Current Plan
 CMJV: D6-A5-A6 – Current Plan

**Tom Bradley International Terminal
 Interior Improvements and Baggage Screening Facilities**





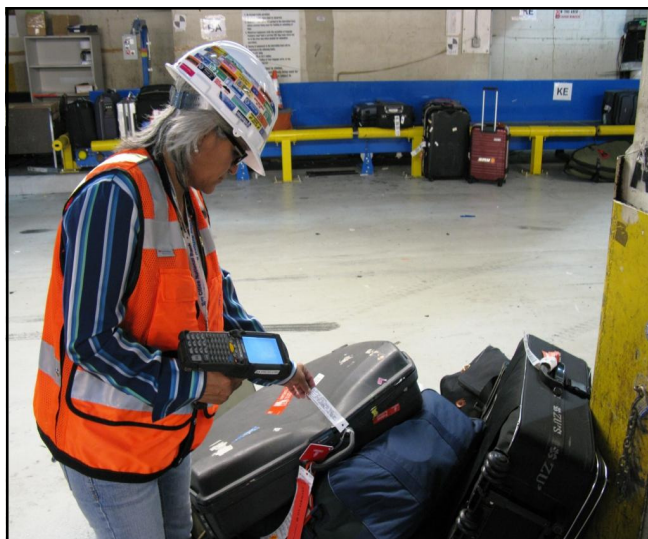
Baggage Handling Pier Phasing

The chart on Page 4 shows the latest phasing plan for completion and activation of additional sort piers in the new Baggage Handling System. Sort Piers 9 & 10 were added to the system in late May, replacing existing Pier 4. This provides 10 Sort Piers, 3 existing Piers, and Sprung 1 (2 pier equivalent) for current use by the airlines (15 total plus MX belt). Sprung 2 is closed.



Sort Piers 11 & 12 are scheduled for completion and activation on **July 22, 2009**, at which time existing Piers 1 & 3 will be closed. Existing Pier 2 will remain active with double sided access. This will provide 12 Sort Piers, 1 existing Pier, and Sprung 1 for use (15 total plus MX belt). Current Arrival Lobby construction will require relocation of MX to the Departures Lobby in early August, 2009, adding MX to the BHS mix. Current planning is to locate MX in Sprung 1 due to their volume of traffic.

The BHS contractor will concentrate on completing the “recirculation loop” and Early Bag Storage (EBS) lines, in addition to bringing on additional Sort Piers as quickly as possible, with all 24 Sort Piers available in November 2009.



TASS BRS HHT

The photo on the left shows ongoing testing of the new TASS Hand-Held Terminals (HHT) associated with the new TASS Baggage Reconciliation System (BRS).

LAXTEC has procured forty-six (46) of the devices from the TBIT project for use by those airlines / ground handlers electing to use the TASS BRS (SITA Bag Manager) system. These devices have been assigned to four of the five ground handlers to date for use in providing the latest in BRS services to their customers. With the advent of TASS BRS, the use of “bingo cards” will soon be only a fond memory.

Arrivals Lobby Phase 6.1

With the completion of the new North Ramp between FIS and the Arrivals Lobby, the pace of work on the renovation of the central section of the lobby has increased.

The photo on the right shows the installation of the new channel glass wall above the North Ramp on the west side of the Arrivals Lobby (protective panels are shown during construction). In the background is the new “Halo” being installed over the central meeting area at the top of the ramp. These features are part of the upgrade work being done in association with the WOW upgrade project initiated by LAWA.



LAXTEC

LAXTEC Corporation
380 World Way
Box S-18
Los Angeles, CA 90045

Phone: 310-646-9378
Fax: 310-646-2981
SITA: VNYLXCR



One final look at one of the old BRS cabinets being replaced with the new BRS workstations. They served us well.

TBIT Construction Photos

A pair of the new roof mounted air handling units.



Renovation of the mezzanine bar.



Published for LAXTEC by

AvAirPros