



CLAYCO OVERVIEW

2017





Full-Service Real Estate Development

Design-Build

At Risk Construction Management

Architecture & Engineering

Technical Assurance Group (TAG)

Concrete Strategies (CSI)

Ventana Enclosure Systems

Treehouse Adventures

- MU/DAI
- Smart Building

OUR PROMISE

Fully Integrated
Facility Delivery Firm

**we are
a trusted partner
on your most
complex, mission-
critical projects.**

CLAYCO AT A GLANCE

CLAYCO

THE ART & SCIENCE OF BUILDING



33 YEARS
1984 2017



1,785
EMPLOYEES



LEED
PROJECTS

PLATINUM 4
GOLD 27
SILVER 19
CERTIFIED 19

and **70+**
LEED
ACCREDITED
PROFESSIONALS



\$1.691
BILLION TOTAL
REVENUE IN
2016

■ Clayco provides **FAST-TRACK,**
EFFICIENT SOLUTIONS nationally.



FULLY INTEGRATED FACILITY DELIVERY FIRM

Clayco has set new standards for design, quality and craftsmanship, efficient project management, cost containment and worker safety.

SAFETY
IS OUR
#1 PRIORITY.

CURRENT EMR
0.49



AWARDED **OSHA VPP**
STAR REGION 7

FULL-SERVICE INTEGRATED COMPANY

CRG

REAL ESTATE SOLUTIONS

development

CRG Real Estate Solutions

is a full-service real estate development team operating under the Clayco brand with experience in the development, structuring, financing, marketing and sale of a multitude of product types.

FORUM

THE ART & SCIENCE OF BUILDING

*architecture +
interiors*

Forum Studio

is a next-generation design practice that serves a diverse range of national and international clients, leveraging our expertise in architecture, workplace strategy, interior design, landscape architecture, urban planning and engineering.

CLAYCO

THE ART & SCIENCE OF BUILDING

design-build

Clayco design-build

is an integrated project leader that delivers construction projects around the world with the highest quality solutions on time, on budget and above and beyond expectations. We are design-builders and design and construction managers.

CONCRETE

STRATEGIES

*concrete
construction*

Concrete Strategies (CSI)

is a full-service concrete, structural steel, and civil contractor with the in-house resources and expertise to safely self-perform a wide variety of commercial construction.

VENTANA

DESIGN-BUILD SYSTEMS

*building
enclosure*

Ventana

designs, supplies, and installs high performing curtain wall façade systems.

THE MARKETS WE SERVE

INSTITUTIONAL

Healthcare | Life Sciences | Education | Government



COMMERCIAL

Corporate | Interiors | Mission Critical | Residential
Mixed-Use | Sports | Financial Facilities



INDUSTRIAL

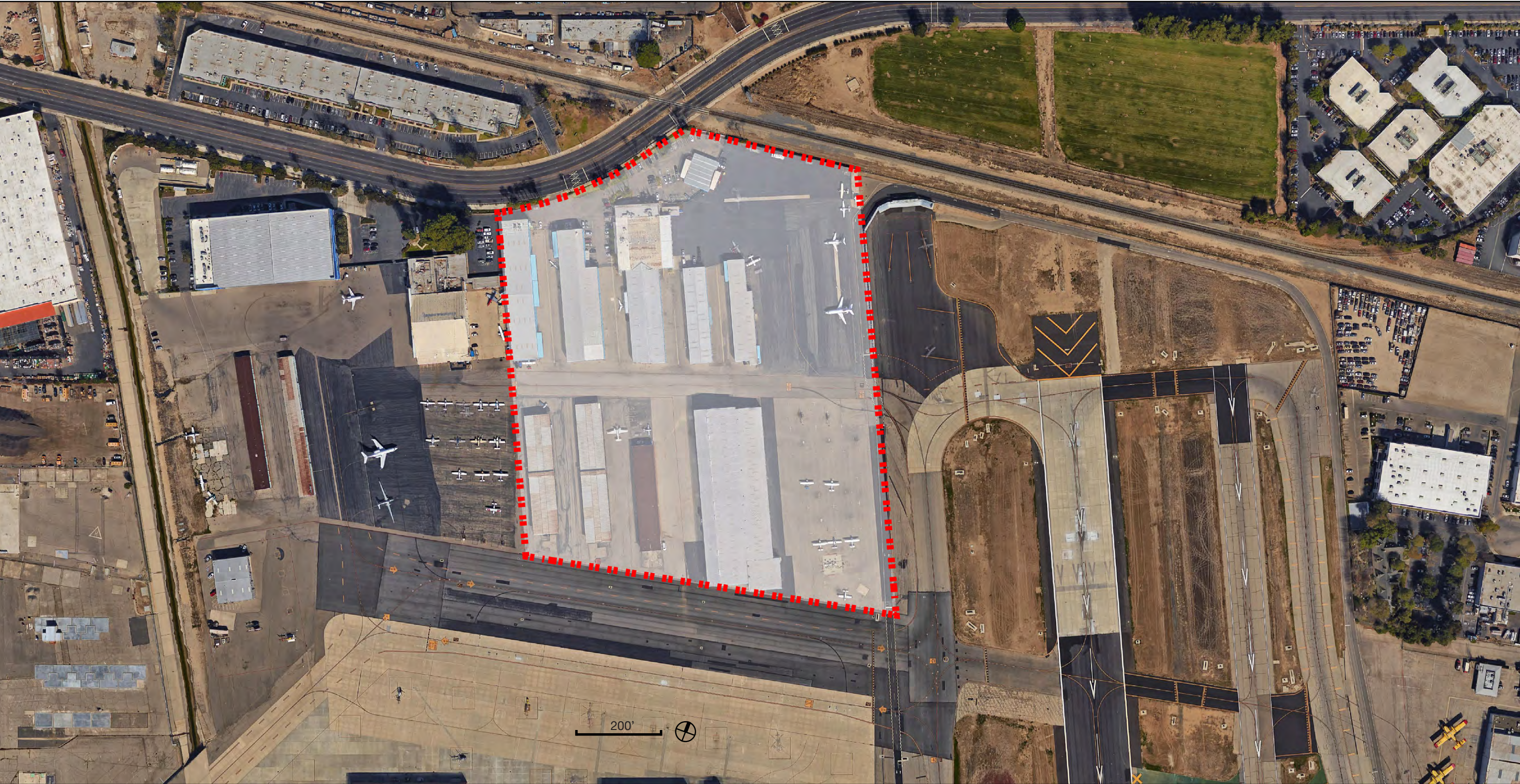
Distribution | Manufacturing | Aerospace | Food & Beverage



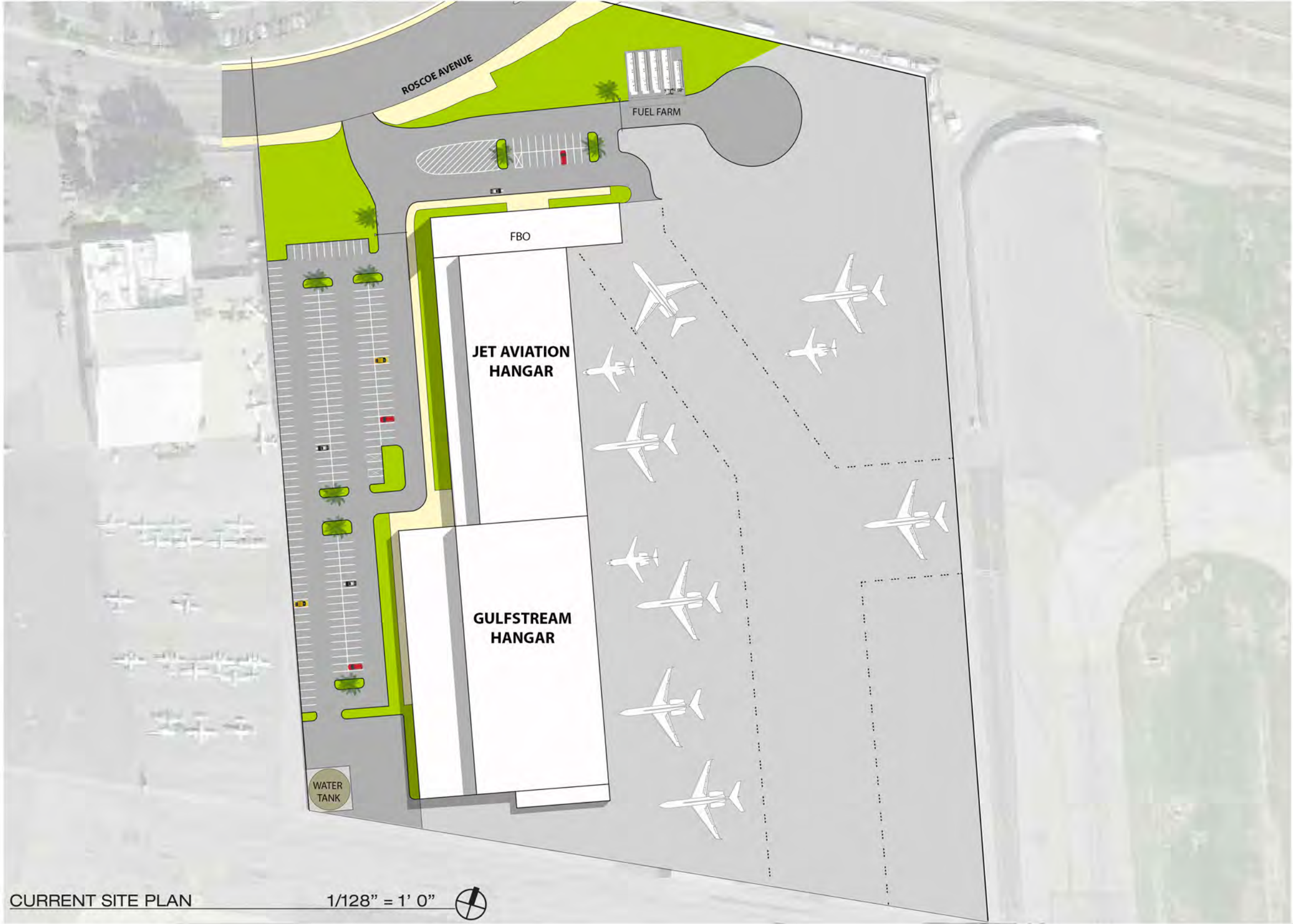
RESIDENTIAL/HOSPITALITY

Multi-Family | Hotels | Student Housing





OVERALL SITE PLAN



VIEW FROM NORTHWEST



AERIAL VIEW FROM NORTHWEST



AERIAL VIEW FROM SOUTHEAST



VIEW FROM NORTHEAST



VIEW FROM NORTHWEST

