



BUSINESS & JOB
RESOURCES CENTER



Los Angeles
World Airports



Business & Job Resources Center (BRJC)

The BRJC exists to link businesses, jobs, and education opportunities with those who live in our neighboring communities.

Presented by
Michael G. Corrin, Assistant Director
August 18, 2009





BUSINESS & JOB
RESOURCES CENTER



Los Angeles
World Airports



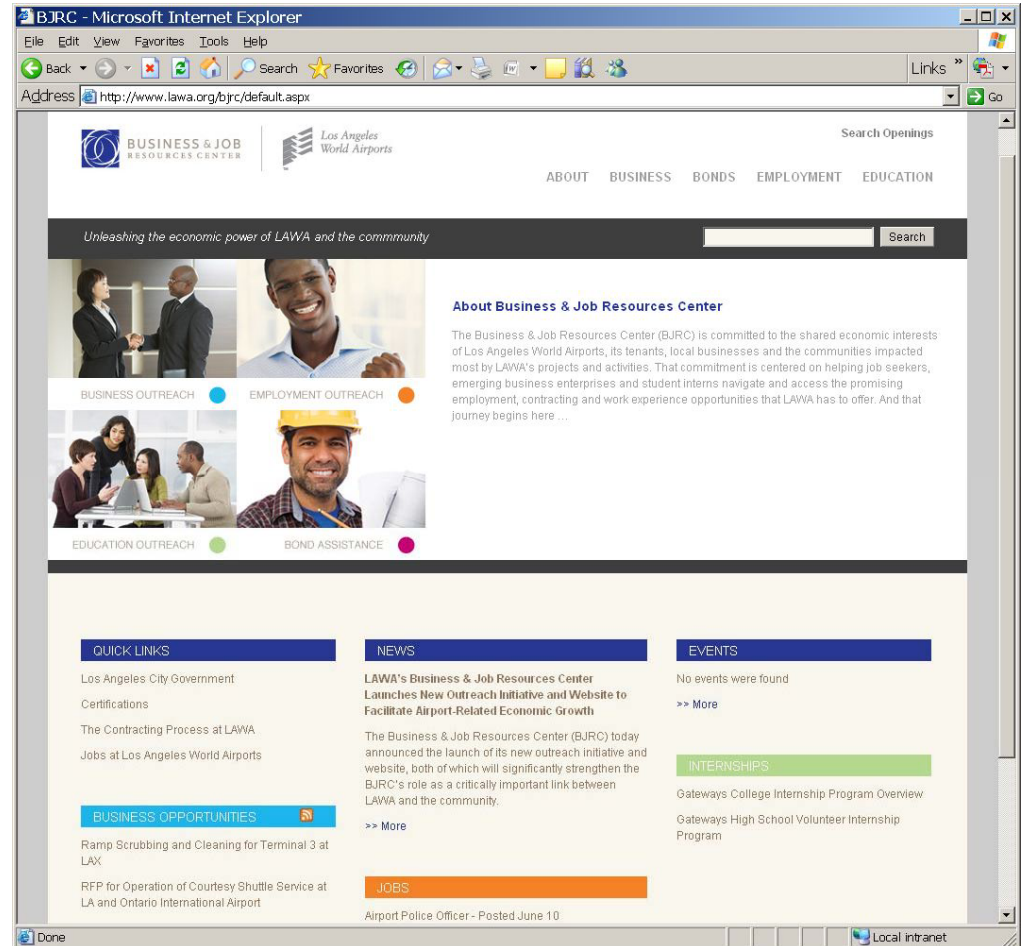
The Home Page

www.lawa.org/bjrc



BUSINESS & JOB
RESOURCES CENTER

“Unleashing the economic power
of LAWA and the community”





BUSINESS & JOB
RESOURCES CENTER



Los Angeles
World Airports



BJRC Customers

- Local business enterprises
- International business enterprises
- Community residents
- Local employers
- LAWA tenants
- LAWA divisions
- Employment development agencies
- Job seekers
- Educational institutions
- Local and international students





BUSINESS & JOB
RESOURCES CENTER



Los Angeles
World Airports



BJRC Programs

- Business Outreach
- International Trade
- Bond Assistance (BAP-LA)
- First Source Hiring
- Job Training
- Gateways Internship





Business Outreach

- Provides minority, women and small business firms access to LAWA contracting opportunities
- Increases the pool of qualified LAWA subcontractors
- Facilitates certification
 - Dedicated staff to expedite process
 - Acceptance of National Minority Supplier Diversity Council certification





BJRC Conducted Pre-Proposal Meetings

Projects	Attendees
• Mid-field Terminal/CIP	477
• ITESSS	204
• STI	258
• SAP	55
• Concessions (Aug 08)	223
• Concessions (Sept 08)	157
• Concessions (June 09)	401
• IT Prime/Sub Meeting (July 09)	58

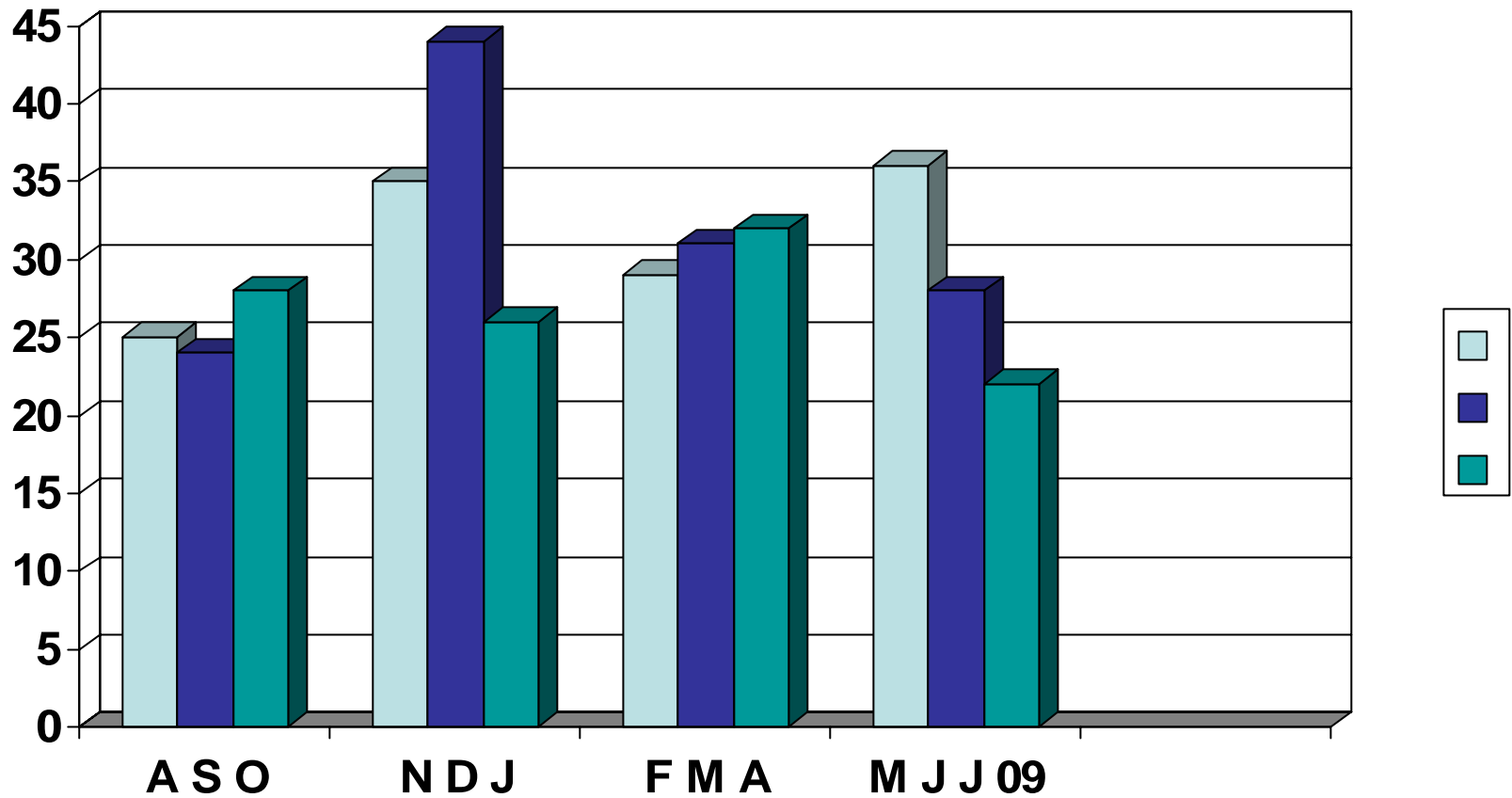
BJRC Assisted Pre-Proposal Meetings

• Aviation Professional Services	316
• Residential Soundproofing	13
• Airfield Intersection Improvements	100





“How to Do Business with LAWA” Meeting Attendance Aug 08- Jul 09





International Trade

- Quarterly seminars hosted by LAWA in partnership with the Port of Los Angeles, federal, state and local government and private agencies
- Provides information about industry trends, access to capital, employment opportunities and regulatory initiatives
- Next seminar scheduled for November 2009 hosted by the Port of Los Angeles





LAWA Bond Assistance Program

- City of Los Angeles – BAP LA
 - Bond guarantees up to 40% of bond to a maximum of \$250,000 (whichever is less)
 - Accounting cost subsidy up to \$3,200 for financial statements (one time only)
 - Funds administration payment fees – 1% of contract price
 - Eligibility – Small Local Contractors bidding on LAWA projects





First Source Hiring Program

The First Source Hiring Program (FSHP) is LAWA's employment program, newly automated, to assist LAX employers in filling their open positions.

In partnership with local worksource agencies, the FSHP provides prescreened and prequalified candidates from the local community for interview consideration within five (5) working days.

How Does the FSHP Work?

- LAX Employers post their open positions to the BJRC website www.lawa.org/bjrc
- Employers interview the prescreened and qualified FSHP candidates before opening the positions to the general public.
- Employers submit to LAWA the disposition of the candidates.





The FSHP is Easy

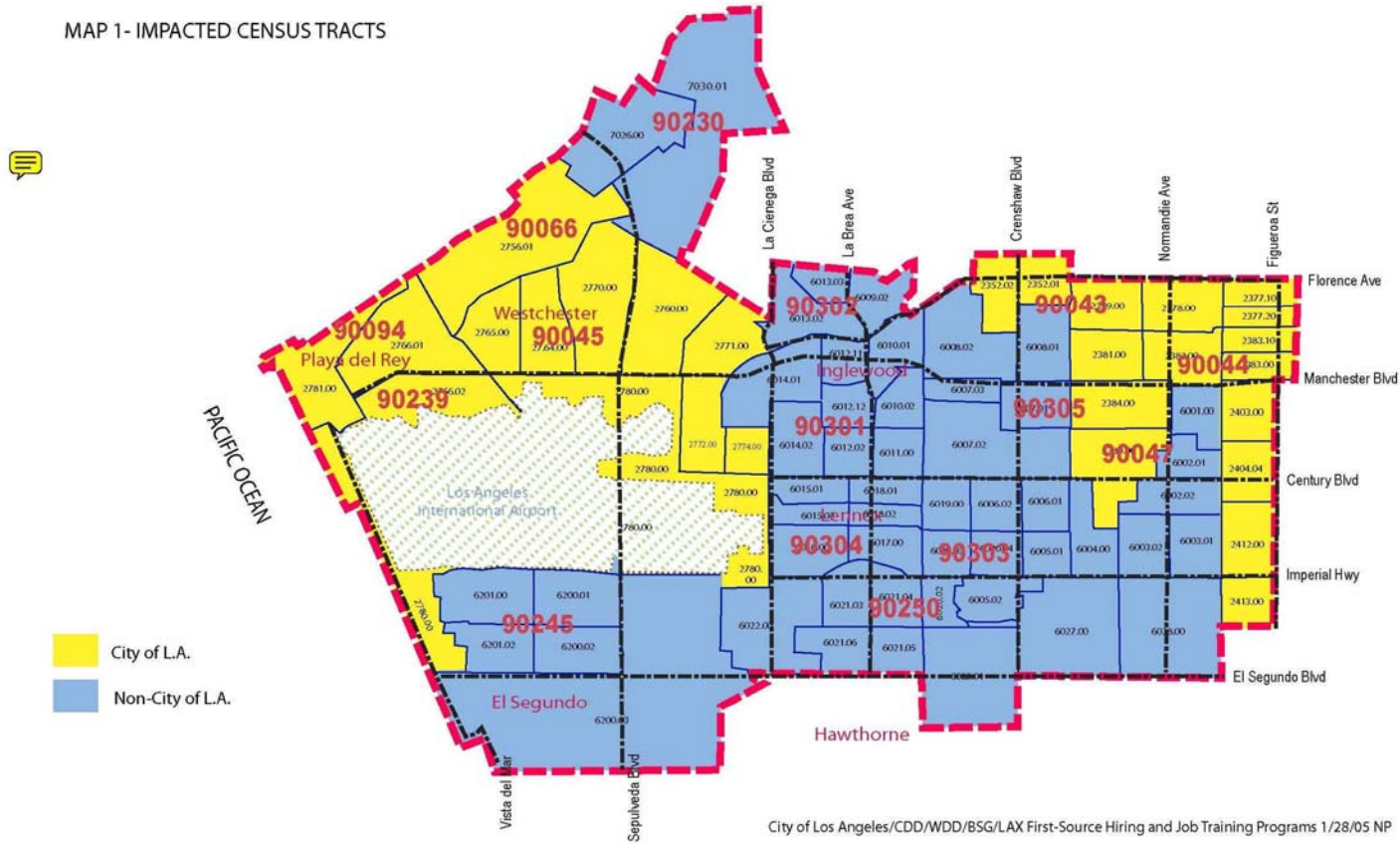
The BJRC presents prescreened, qualified and badgeable candidates from the Project Impact Area (PIA) for consideration using:

- Applicant Tracking System (Powered by **Agile1**) *launched July 28, 2009*
- Business and Job Resource Center/Hire Inglewood Program (HIP) Office
- Worksource/One-Stop Centers
- Employment Development Department (EDD)
- Community and Faith Based Organizations





MAP 1- IMPACTED CENSUS TRACTS



City of Los Angeles/CDD/WDD/BSG/LAX First-Source Hiring and Job Training Programs 1/28/05 NP





Results

First Source Hiring Program (FSHP)

- Referred 2717 clients for 952 LAWA jobs
- Worked with 71 LAWA employers
- Worked with 56 program partners
- 603 confirmed hires
- Hire Inglewood Program (HIP) office opened January 2008





FSHP - Workforce Development Meetings

- Deputy Mayor Larry Frank meets monthly with the following proprietary departments to facilitate conversation and learning opportunities in our shared effort to increase employment opportunities:



Other departments include: CDD, Human Services, and Personnel

- The Mayor meets quarterly with the Workforce Development Team to share his vision for employment and to discuss how each of these economic engines is able to assist him in meeting his employment goals.





Job Training Program

The BRJC, in partnership with local worksource, community and faith-based agencies, is leveraging community job training resources to provide training to local residents, pending FAA approval of an official LAWA Job Training Program

- Referred 401 people for training
- Worked with 15 local training providers
- 276 people completed training





Gateways Internship Program

- Exposes students to career opportunities in the aviation industry.
 - By providing on-the-job experience in the aviation field through education, training, mentoring programs and activities, students are better prepared to enter the workforce.
- Local / International Students
- Partnerships
- Economic Stimulus Results





Gateways Student Breakdown

• LAWA Paid College 24

• International 1

Sub total 25

Volunteers/Paid Volunteers

• High School 7

• College 26

• International 1

Sub total 35

TOTAL STUDENTS IN PROGRAM: 60





**BUSINESS & JOB
RESOURCES CENTER**



*Los Angeles
World Airports*



The Home Page

www.lawa.org/bjrc



**BUSINESS & JOB
RESOURCES CENTER**

**“Unleashing the economic power
of LAWA and the community”**

(310) 417-6490

(310) 649-3489 fax

