

Construction Hot Topics

Week of: April 16, 2017 – April 22, 2017

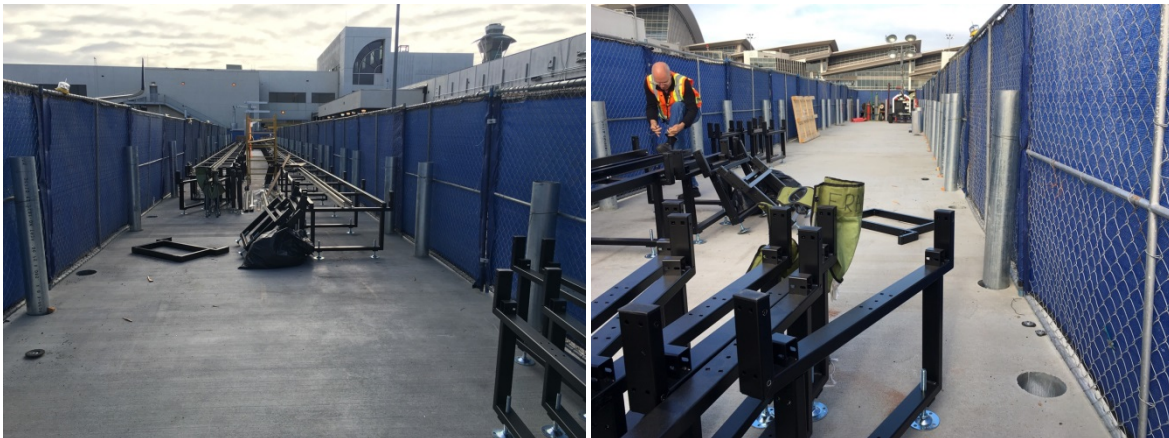
1. Airside: MSC Gateway and MSC Sites

- The MSC Gateway site is adjacent to Terminal B (Gate 148). The first image below shows current work underway at the Gateway site, which includes work on a siphon structure and fuel line construction.
- The MSC site is across Taxiway S. The second image shows the MSC site, where work on the domestic water line and sewer line are upcoming, with dirt hauling from Westchester Parkway to the MSC site scheduled to begin on May 24.



2. Airside: Terminal 3

- As part of the enabling work for Delta's move to Terminals 2 and 3, there is a "make-up carousel" being constructed along Terminal 3's apron. This baggage handling system (BHS) will help increase capacity and is considered "temporary" as it will eventually be replaced by the greater redesign that Delta implements on the north side. These steel components (left image) will support the overhead conveyor system (right image). The BHS work is scheduled through July 1.
- Work on the baggage conveyor continues. A substantial concrete platform was poured and leveled for the conveyor, which has been laid out beginning from the east side of Terminal 3 (left image) and will continue to be laid going west towards Terminal B (right image).



LAX IS HAPPENING™

📞 LAX Construction Hotline: 310-649-5292

🐦 @flyLAXairport

📘 LAXInternationalAirport

3. Airside: Gavin de Becker Suite

- A glimpse of the private, for-booking, Gavin de Becker VIP Suite, located between Aero Mexico and LSG Sky Chef, abutting Imperial Highway. Construction began in October 2016, and the Suite is anticipated to open very soon. Currently, they are testing procedures and awaiting some final approvals. A fleet of silver BMWs will transport suite passengers to the terminals.



4. Airside: 7L/25R Shortened Runway

- Work on the 25R runway shortening continues (both images below). The Departures Only closure is expected to last through Wednesday, April 19, and then a full closure of 25R commences through May.



LAX IS HAPPENING™

📞 LAX Construction Hotline: 310-649-5292

🐦 @flyLAXairport

📘 LAXInternationalAirport