

SAP FIORI LAUNCHPAD

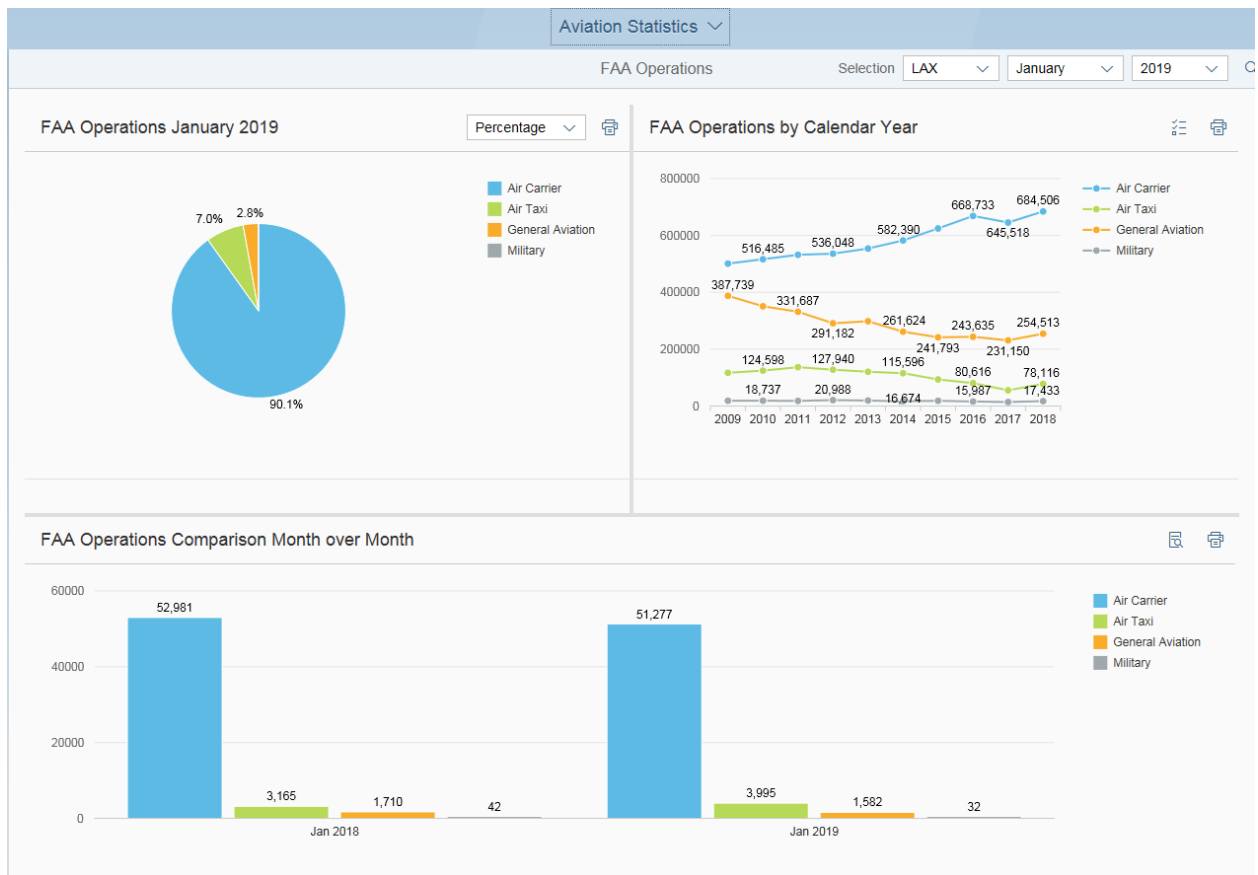
Aviation Statistics – FAA Operations



Financial Management Systems Division

Version 1.0.0

August 2018



Selection Criteria

By default the last LAX is chosen along with the last month and year of data loaded.

Selection LAX January 2019



Use drop down boxes to select your report criteria. Click the search icon

to update the data in the graphs.

Selection LAX

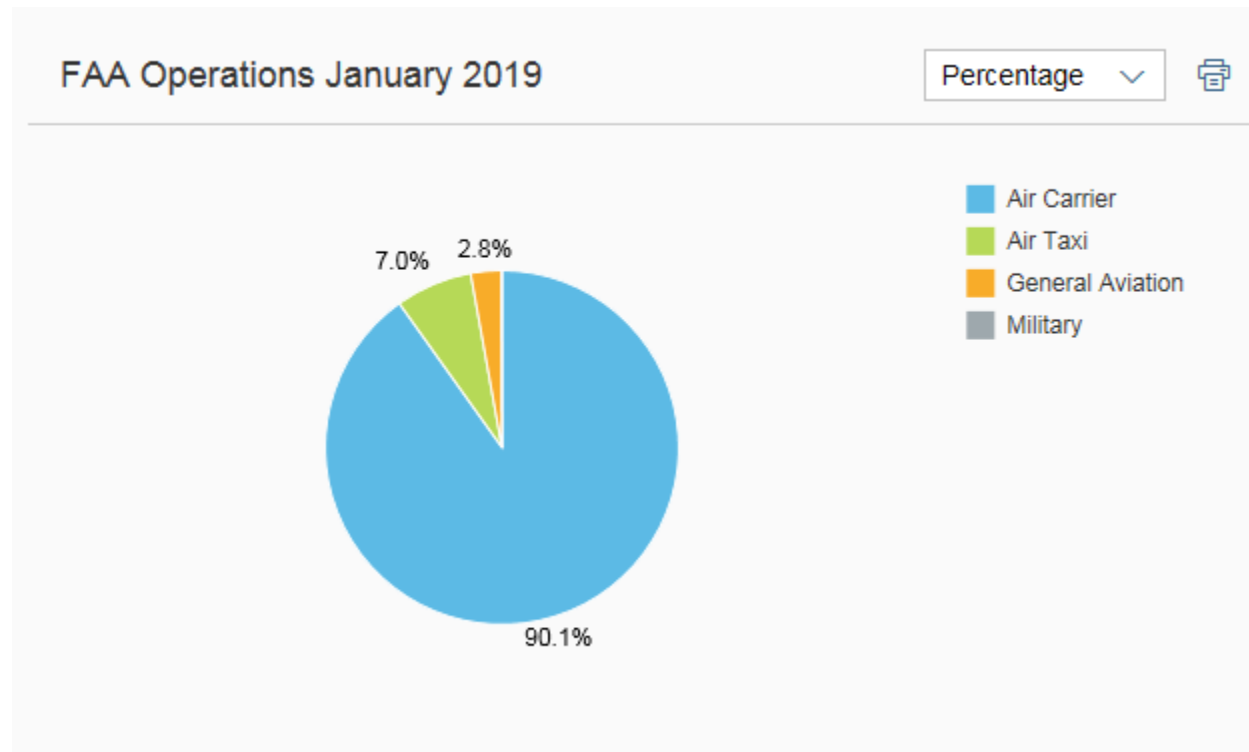
Calendar Year LAX

January

2019

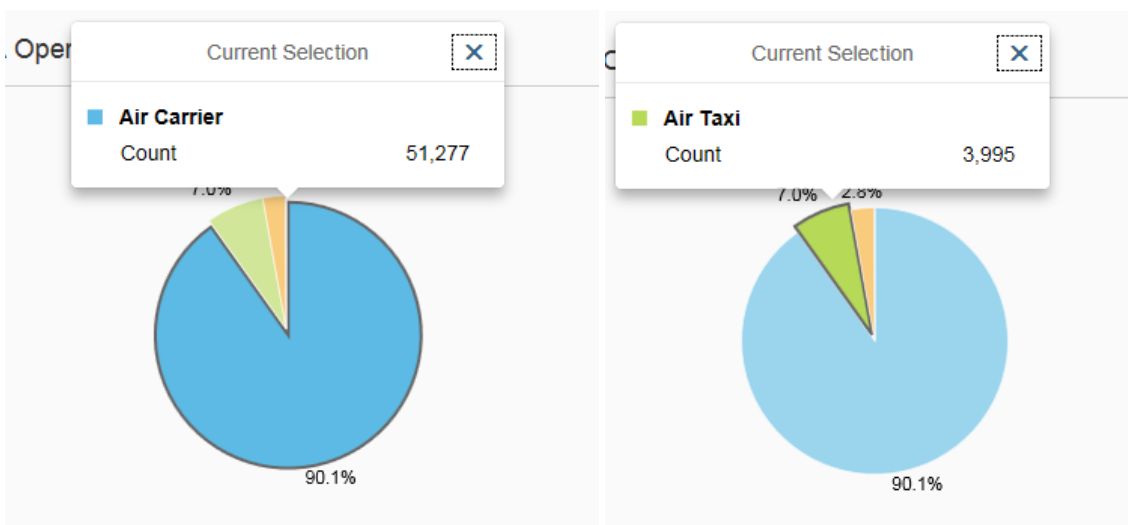
FAA Operations

Pie chart displays FAA operations for the designated selection criteria.



Each piece of the pie is clickable for additional information regarding that slice.

- 90.1% represents 51,277 FAA operations for Air Carrier.
- 7.0% represents 3,995 FAA operations for Air Taxi.





Something cool! - the row of icons at the top of the graph

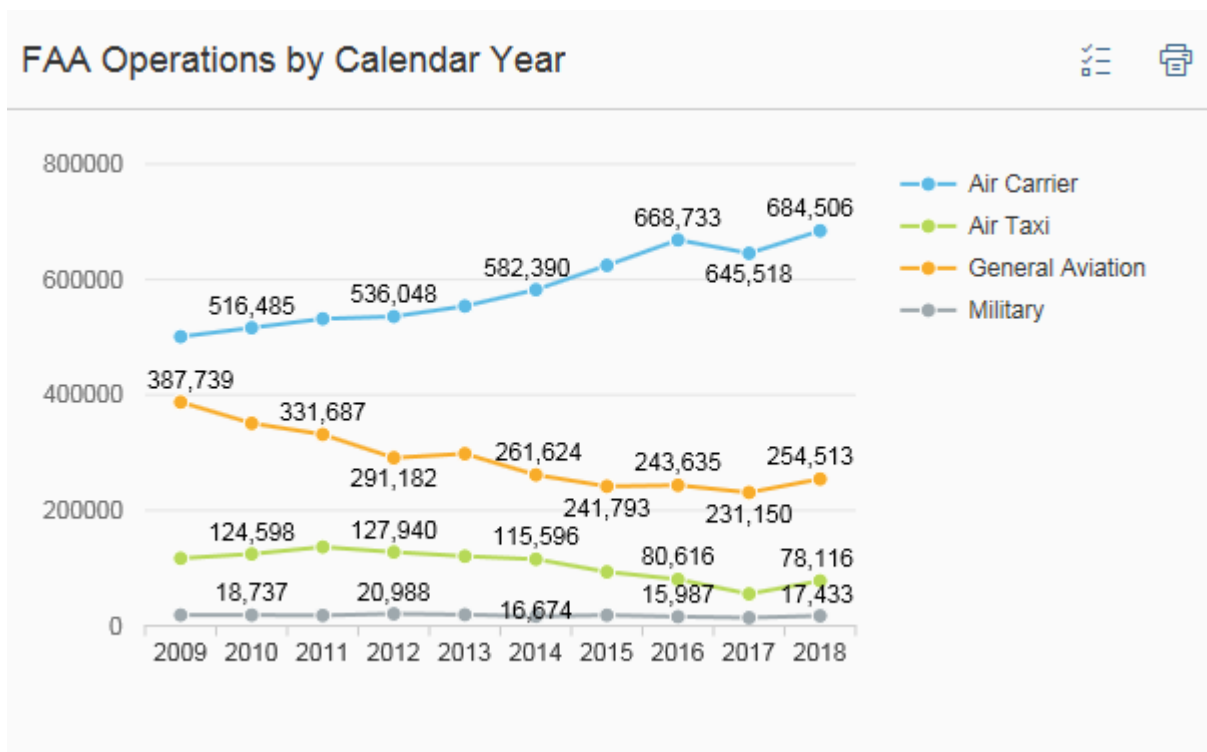
allow for additional functionality.



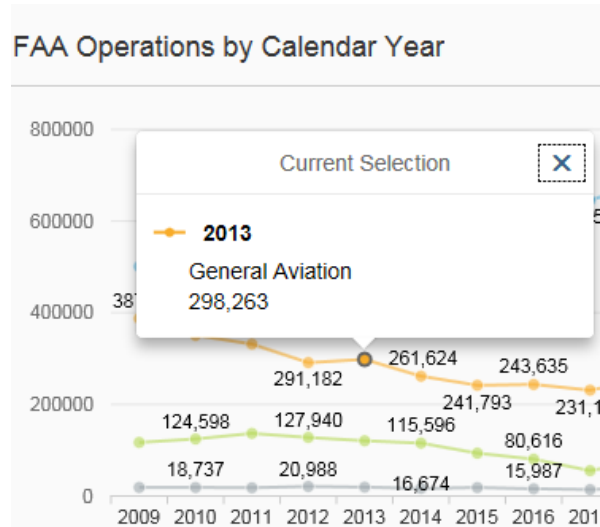
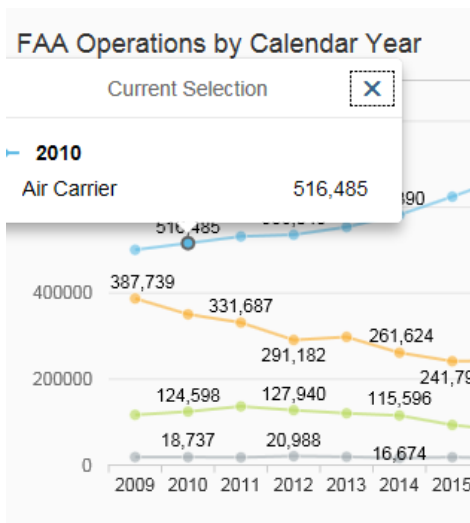
Print pie chart/bar graph to PDF

FAA Operations by Calendar Year

Shows total FAA operations for the 10 most recently completed calendar years. This graph is static and is for all reporting airports.

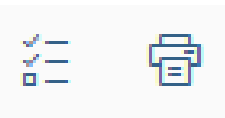


Each plot point is clickable for additional information regarding that plot point.



Something cool! - the row of icons at the top of the graph

allow for additional functionality.



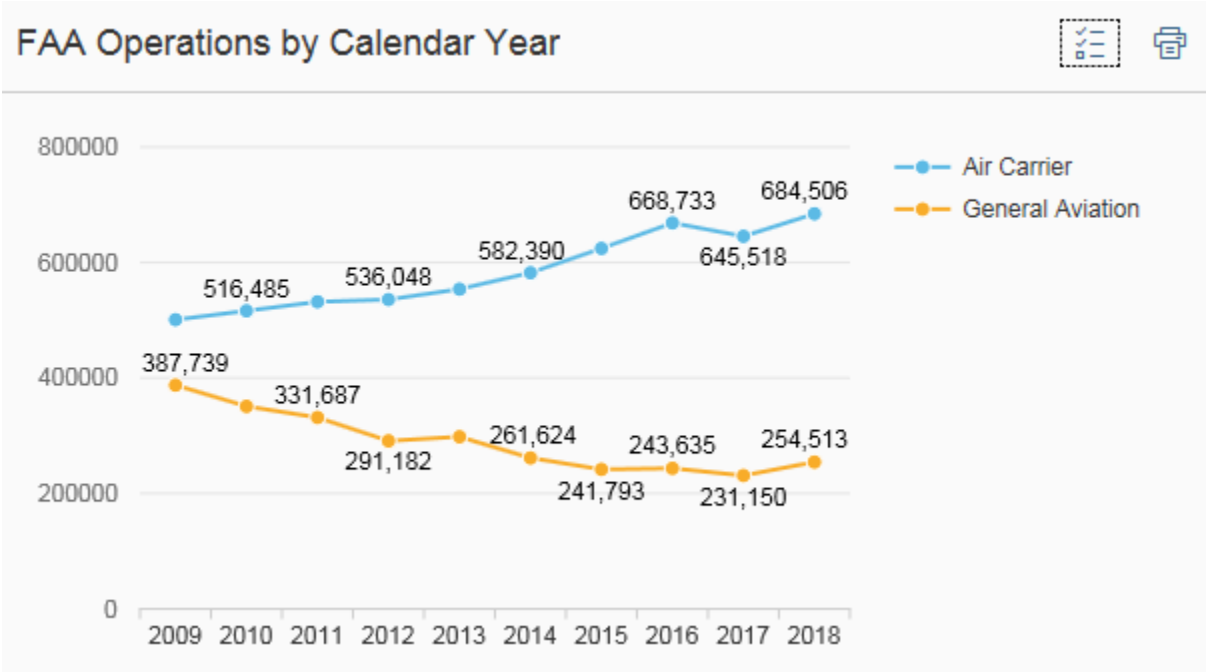
← This icon allows you to show/hide lines on the graph.

Selection

- ☒ Air Carrier
- ☐ Air Taxi
- ☒ General Aviation
- ☐ Military

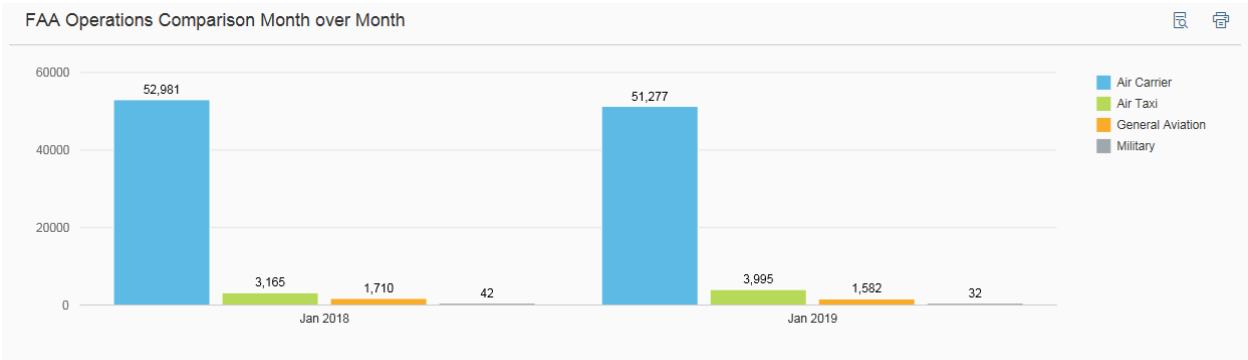
Ok

As a result the Air Carrier and General Aviation lines are the only lines displayed.



FAA Operations Comparison Month over Month

Graph shows all FAA operations for the designated selection criteria compared to the previous year.



Something cool! - the row of icons at the top of the graph



This icon allows you display the graph information in grid format.

FAA Operations Comparison Month over Month

FAA Operations Totals	Jan 2018	Jan 2019	%Change	
Air Carrier	52,981	51,277	-3.22	
Air Taxi	3,165	3,995	26.22	
General Aviation	1,710	1,582	-7.49	
Military	42	32	-23.81	

Close