



*Los Angeles
World Airports*



Landside Access Modernization Program Business Opportunities Forum

December 14, 2016



*Los Angeles
World Airports*

Welcome

Deborah Flint

Chief Executive Officer

Los Angeles World Airports



*Los Angeles
World Airports*

Sean Burton

President

Board of Airport Commissioners



Mayor Eric Garcetti

City of Los Angeles



*Los Angeles
World Airports*

Deborah Flint

Chief Executive Officer
Los Angeles World Airports



*Los Angeles
World Airports*

Valeria C. Velasco

Vice President

Board of Airport Commissioners



Welcome

Bernida Reagan

Director of Community & Client Relations
Merriwether & Williams Insurance Services

Our Role



- **Small Local Business Engagement**
- **Policy Consulting for Los Angeles World Airports**
- **City's Contractor Development & Bonding Program Administrator**
- **Guide for Today's Event**

Today's Program

I. Welcome

II. Los Angeles World Airports (LAWA) Development Organization

III. Landside Access Modernization Program Update

IV. Next Steps – We Want to Hear From You!

V. Networking Reception



*Los Angeles
World Airports*

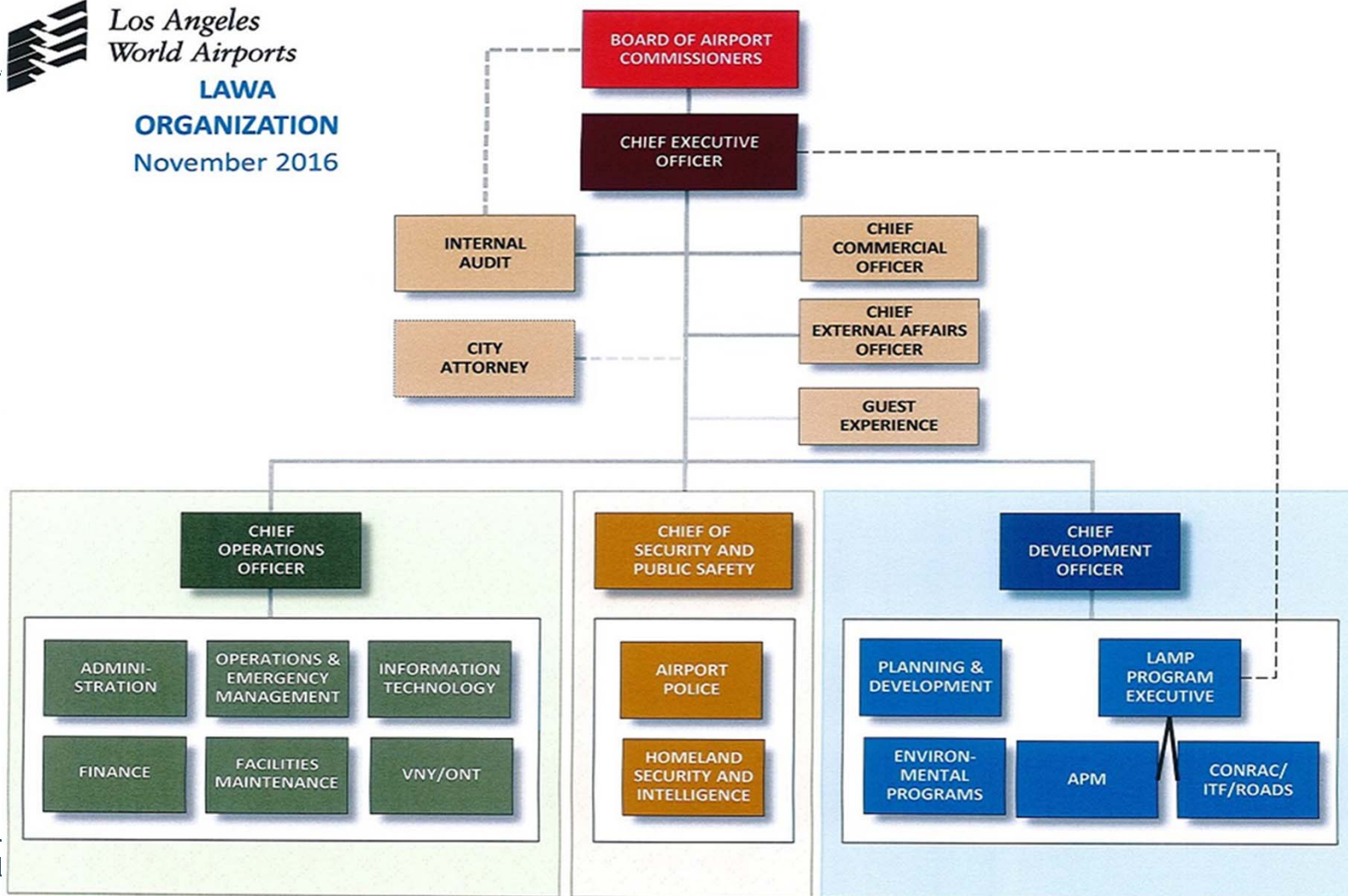
New Developments

Robert “Bob” Gilbert

Chief Development Officer
Los Angeles World Airports



Los Angeles
World Airports
LAWA
ORGANIZATION
November 2016



AIRPORT DEVELOPMENT DIRECTORATE



Roger Johnson, Deputy Executive Director

- Executive Manager of the Landside Access Modernization Program (**LAMP**):
- APM, Roads and ConRAC projects



Samantha Bricker, Deputy Executive Director

- Executive Manager of the Environmental Programs Group
- Continue Project Development and Coordination role in LAMP
- Oversee Third Party issues, agency interface and coordination of stakeholders for LAMP



Cynthia Guidry, Deputy Executive Director

- Executive Manager of the Planning & Development Group
- Deliver LAWA's multi-billion dollar Capital Improvement Program (CIP)
- Manage improvement projects that support the operation of airports

Commitment to Inclusivity for Local Businesses

- ❖ November awards of Program, Construction and Project Management and Project Controls contracts
 - ✓ Local business preference in scoring criteria
 - ✓ Total value of \$285 million
 - ✓ 11 contracts scored and awarded based on firm size categories
 - 5 small firms
 - 3 medium firms
 - 3 large firms

Commitment Doesn't End at Procurement

❖ Orientation of new primes

- ✓ LAWA processes
- ✓ Importance of helping subconsultants

❖ Commitment to Prompt Payment

❖ Planning & Development Contractor Ombuds Office: Business Enterprise & Contract Compliance Office (BECCO)

- ✓ Training on administrative/contract requirements
- ✓ Liaison with badging, insurance, payments, etc.
- ✓ Issue resolution for primes and subs



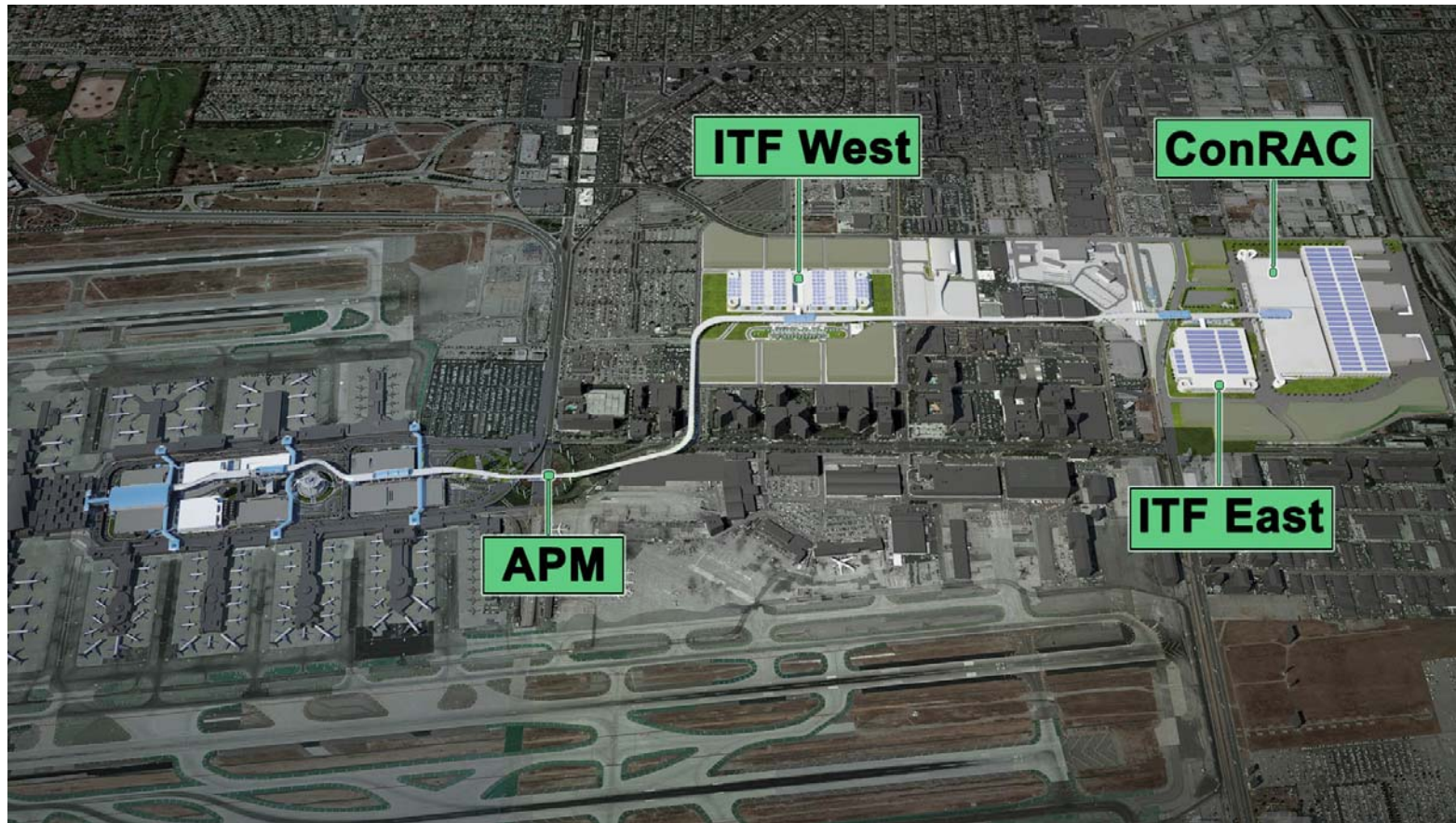
*Los Angeles
World Airports*

Landside Access Modernization Program Update

Roger A. Johnson

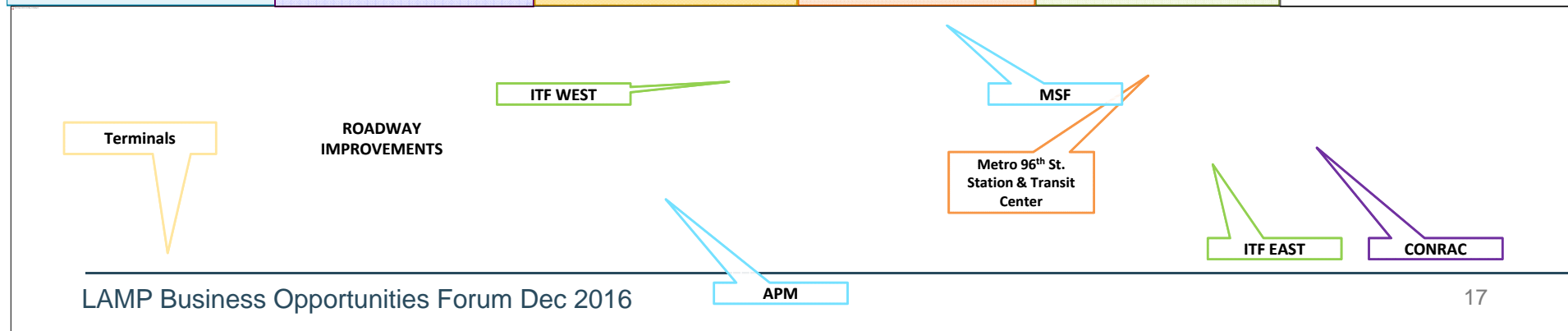
Deputy Executive Director, LAMP Program Mgr
Los Angeles World Airports

APM & Other LAMP Components



Six Major Program Elements

APM	CONRAC	Terminals	Metro	ITFs	Roads
<ul style="list-style-type: none"> • APM Fixed Facilities • APM Operating System • Other components <p>RELEASED</p> <ul style="list-style-type: none"> • Draft RFP OCT 2016 • Draft Project Agreement - NOV 2016 <p>AWARD: JAN, 2018</p>	<ul style="list-style-type: none"> • Customer Service Building • Rental Car Storage • Vehicle prep and light maintenance <p>RELEASED</p> <ul style="list-style-type: none"> • DBFOM RFQ: DEC 2016 <p>AWARD: SEP, 2018</p>	<ul style="list-style-type: none"> • Terminal interface for pedestrian bridges • Vertical cores <p>RELEASED</p> <ul style="list-style-type: none"> • D/B RFQ: OCT 2016 <p>AWARD: SEP, 2017</p>	<ul style="list-style-type: none"> • Connection to 96th Street Metro Station (Metro Project) <p>ANTICIPATED</p> <ul style="list-style-type: none"> • <i>Please follow up with Metro for LAX-related Metro opportunities</i> 	<ul style="list-style-type: none"> • Pick-up/drop-off curbs • Commercial modes • Parking <p>ANTICIPATED</p> <ul style="list-style-type: none"> • ITF WEST Draft RFP - TBD <p>AWARD: SEP, 2017</p>	<ul style="list-style-type: none"> • Roadways, site work, utilities to be procured in multiple packages • LAWA Utilities & LAMP Enabling Projects (LULEP) <p>RELEASED</p> <ul style="list-style-type: none"> • LULEP RFP: NOV, 2016 <p>AWARD MAR, 2017 - LULEP TBD - OTHER ROADWAYS</p>



Automated People Mover



Automated People Mover



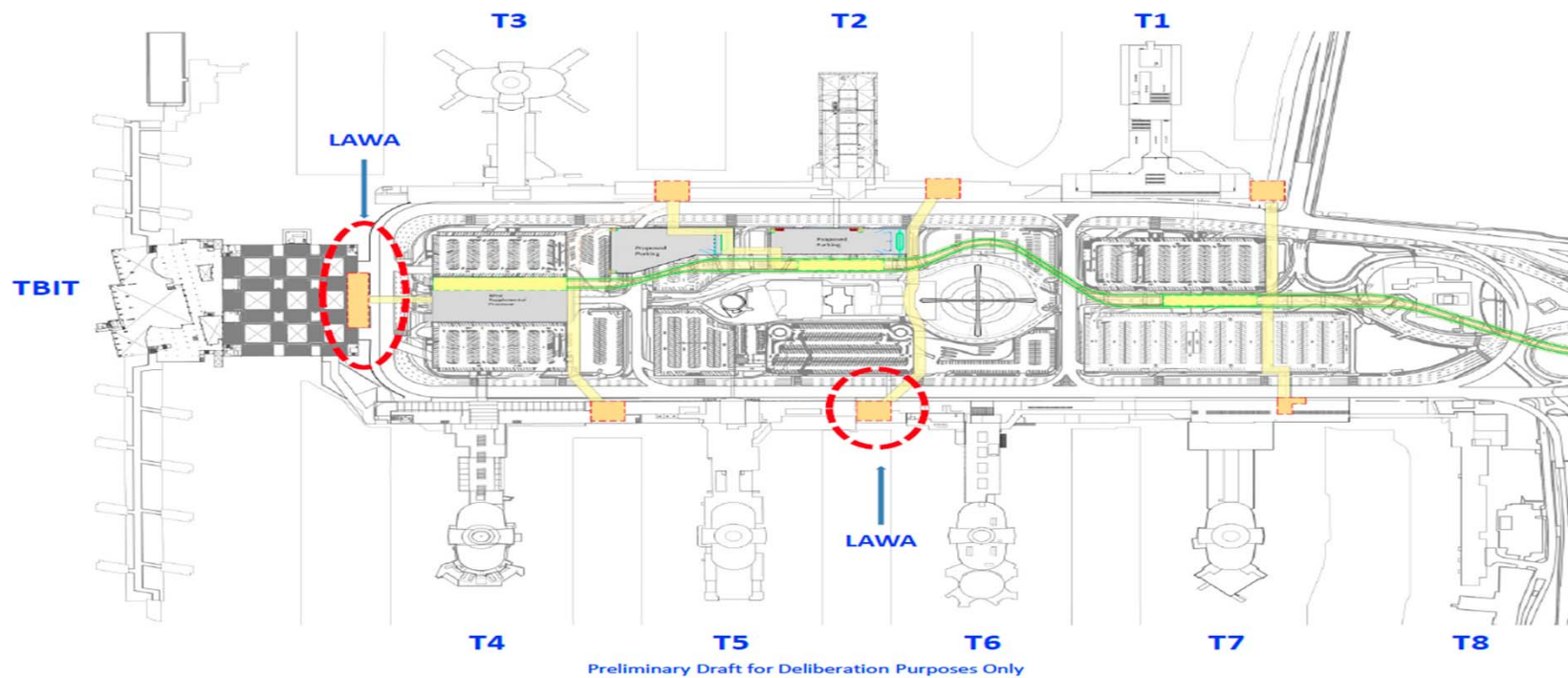
Consolidated Rent-a-Car (ConRAC)



Consolidated Rent-A-Car



Terminal Cores & APM Interfaces



LAWA Utilities & LAMP Enabling Projects – Work Area



LAWA Utilities & LAMP Enabling Projects – Scopes of Work

Advanced Utility Relocations

Utility investigations, installations, relocations as needed, and protection of service lines and related infrastructure for:

- ELECTRICAL
- WATER
- WATER RECLAMATION
- GAS
- SEWER/STORM DRAIN
- AND TELECOMMUNICATION/CABLE SERVICES

Temporary & Permanent Roadway, Parking, & Traffic Improvements

- Widening and re-striping of roadways
- Traffic signal installation and phasing projects
- Installation of additional message signage at all CTA entrances
- Construction of and re-routing to additional parking facilities
- Additional pedestrian pathways and bus rider facilities

Engineering Assessments & Investigations

Specialty services , including but not limited to:

- Field surveys of the APM alignment and associated projects
- Geotechnical investigations
- Utility and pothole investigations
- Engineering assessments of existing conditions

Construction Activities, Including Tenant Improvement Projects

- Projects responding to the APM DBFOM construction needs
- Projects to address impacts of other elements of the LAMP program
- Specific environmental mitigations as required/ indicated by EIR

Demolition of Existing Facilities

- Design/Builder will assess existing conditions of impacted facilities
- Design/Builder to mitigate/ address any hazardous conditions relating to or resulting from demolition operations
- Demolition to be implemented through individual task orders

APM & ConRAC Subcontracting Opportunities

Design

- Civil
- Structural
- Roadways
- Electrical

- Architectural
- Landscaping
- Etc.

Build

- All facets of construction & construction management

Finance

- Variety of financial services

Operate & Maintain

- 30+ years of skilled jobs
- Workforce development & training

Terminal Cores & LULEP Subcontracting Opportunities

Design

- Civil
- Structural
- Roadways
- Electrical
- Utilities

Build

- Demolition
- Utility Relocation
- All facets of construction & construction management

- Architectural
- Landscaping
- Etc.

LAMP Opportunities

❖ ConRAC

- Design, Build, Finance, Operate and Maintain

❖ Terminal Cores & APM Interfaces

- Design/Build

❖ LAWA Utilities & LAMP Enabling

- Design/Build



\$1.8 Billion

**Est.
Project Costs**

LAMP Procurement Documents – To Be Released

	PROCUREMENT DOCUMENT	DATE EXPECTED
Automated People Mover	Integrated APM System Facilities FINAL Design/Build/Finance/Operate/Maintain RFP	June, 2017
CONRAC	FINAL Design/Build/Finance/Operate/Maintain RFP	TBD
TERMINAL CORES	Final Design/Build RFP Tenant Agreements	March, 2017
ITF WEST	Design/Build RFP	April, 2017
ROADWAYS	Requests for Bids/Proposals <i>(Will be delivered in multiple packages)</i>	Ongoing



Next Steps

Bernida Reagan

Director of Community & Client Relations
Merriwether & Williams Insurance Services

We Want to Hear From You

- Forum Survey
- Future Forums
- Networking Reception
 - ❖ Resources & Services
 - ❖ Contracting Community – Who is Here
 - ❖ Room Layout
 - ❖ Outreach and Outcomes

Resources & Services

City & LAWA Services Here for You



BUSINESS & JOB
RESOURCES CENTER



Los Angeles
World Airports



Los Angeles
World Airports
PLANNING & DEVELOPMENT GROUP

BECCO

City Resource Tables

❖ City of Los Angeles, Mayor's Office

- LA City Small Business Development & South Los Angeles Business Source Center

❖ Dept of Public Works, Bureau of Contract Administration

- Certification
- Prevailing Wage

❖ Department of Water and Power

LAWA Resource Tables

❖ LAWA Procurement Services

- How to do business with LAWA
- How to register on LABAVN
- Certification

❖ LAWA Business and Job Resources / First Source Hiring

❖ LAWA Planning & Development

- Business Enterprise & Contract Compliance (BECCO)

Other Resource Tables

❖ Merriwether Williams Insurance Services

❖ Business Resource Group

❖ Help Desk

Contracting Community

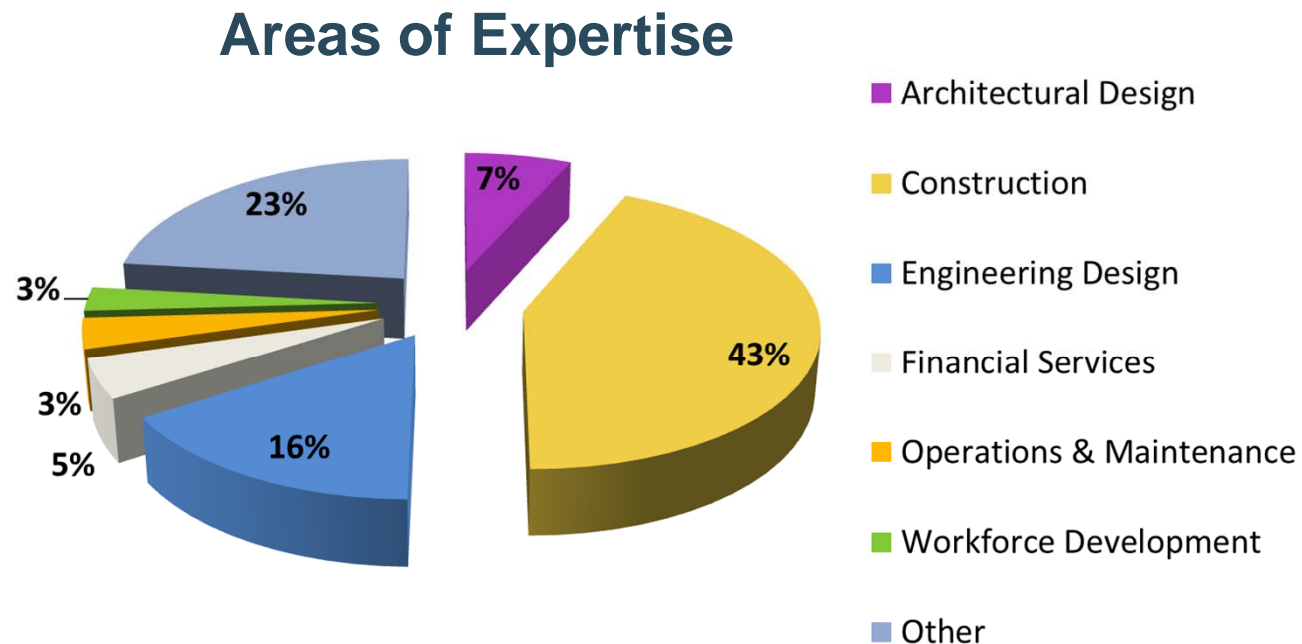
Today's Participant Composition

❖ **1,100 Attendees**

❖ **163
Primes**

❖ **417
Subconsultants**

❖ **14 Prime Exhibits**



Networking Reception

- Financial Services
- Architectural Design
- Engineering Design
- Operations & Maintenance
- Construction
- Workforce Development



Networking Reception

Other Resource Tables

❖ 14 Prime Exhibitors

❖ 10 Resource Tables

❖ Help Desk

Thank You!
Let the Networking Begin!
