




# BURBANK

*for Quiet Skies*

*Follow us*

 Burbank for Quiet Skies Group

 @BURQuietSkies

[www.burbankforquietskies.com](http://www.burbankforquietskies.com)

# What is NextGen?



# According to the FAA...

- More on-time departures and arrivals!



# According to the FAA...

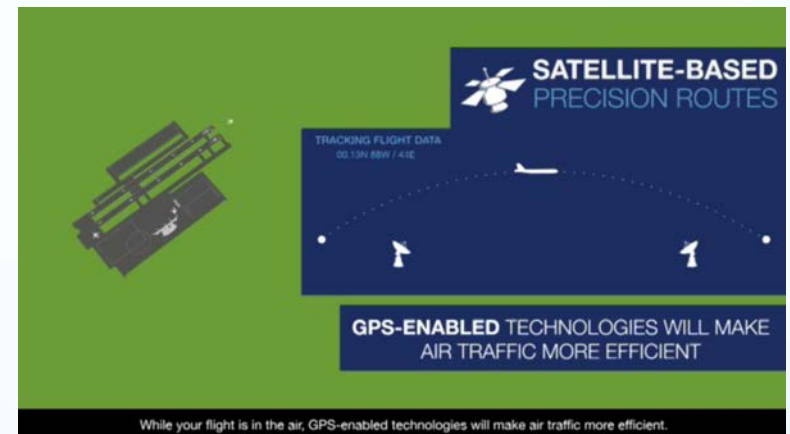
- Quieter and more environmentally friendly!





# According to the FAA...

- Safer air travel!






# What Does This Really Mean?



# In Reality...

- More on-time departures and arrivals...

... means that flights can take off minutes apart, some seconds apart!

 Delta Air Lines	3587	Salt Lake City, UT	<a href="#">Scheduled</a>	4:45 PM
 JetBlue Airways	5288	Oakland, CA	<a href="#">Scheduled</a>	4:45 PM
 Southwest Airlines	5398	Oakland, CA	<a href="#">Scheduled</a>	4:45 PM

# In Reality...

- Quieter and more environmentally friendly...

...means that flights are taking off at lower altitudes and traveling a more precise path over areas they never had before.



# In Reality...

- Noise complaints increased.
- In San Francisco, noise complaints increased 10x from the year prior.

**From 14,726 in 2014**

**To 152,336 in 2015!!**

(this was 2 years before Airnoise.io)

Over a 1,000% increase in just 1 year!!



# In Reality...

- Lawsuits were being filed all over the United States

New York

Phoenix

Colorado

Florida

San Francisco

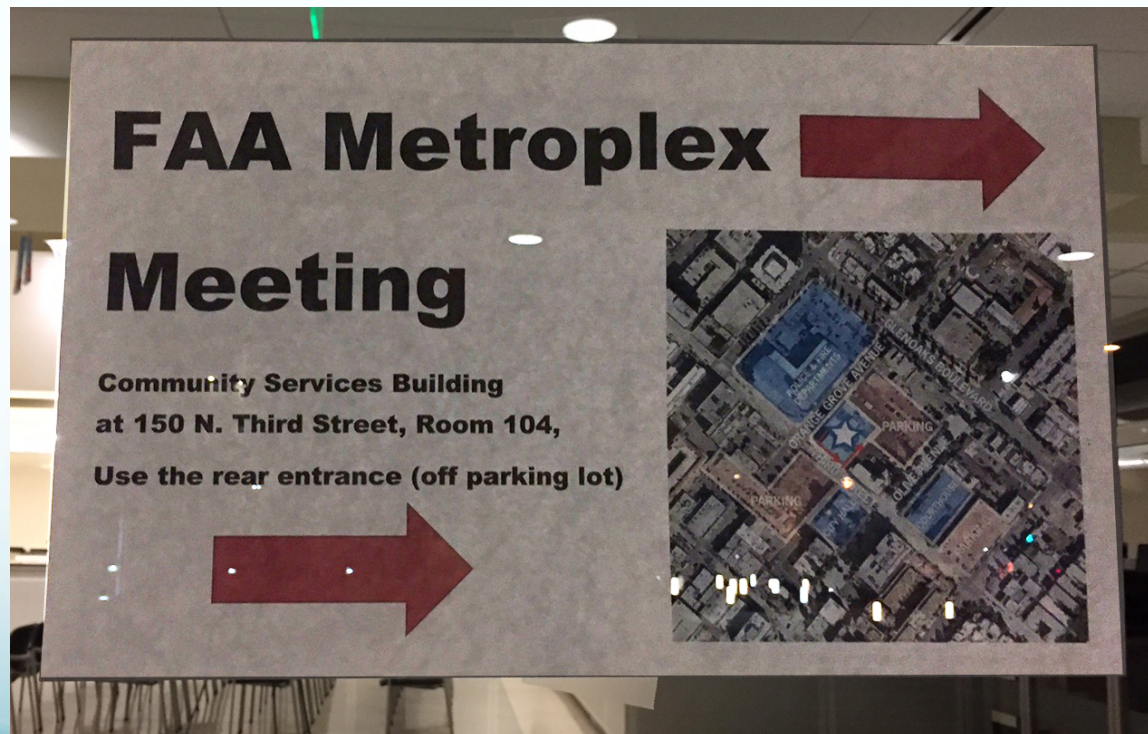
and the list went on and on...





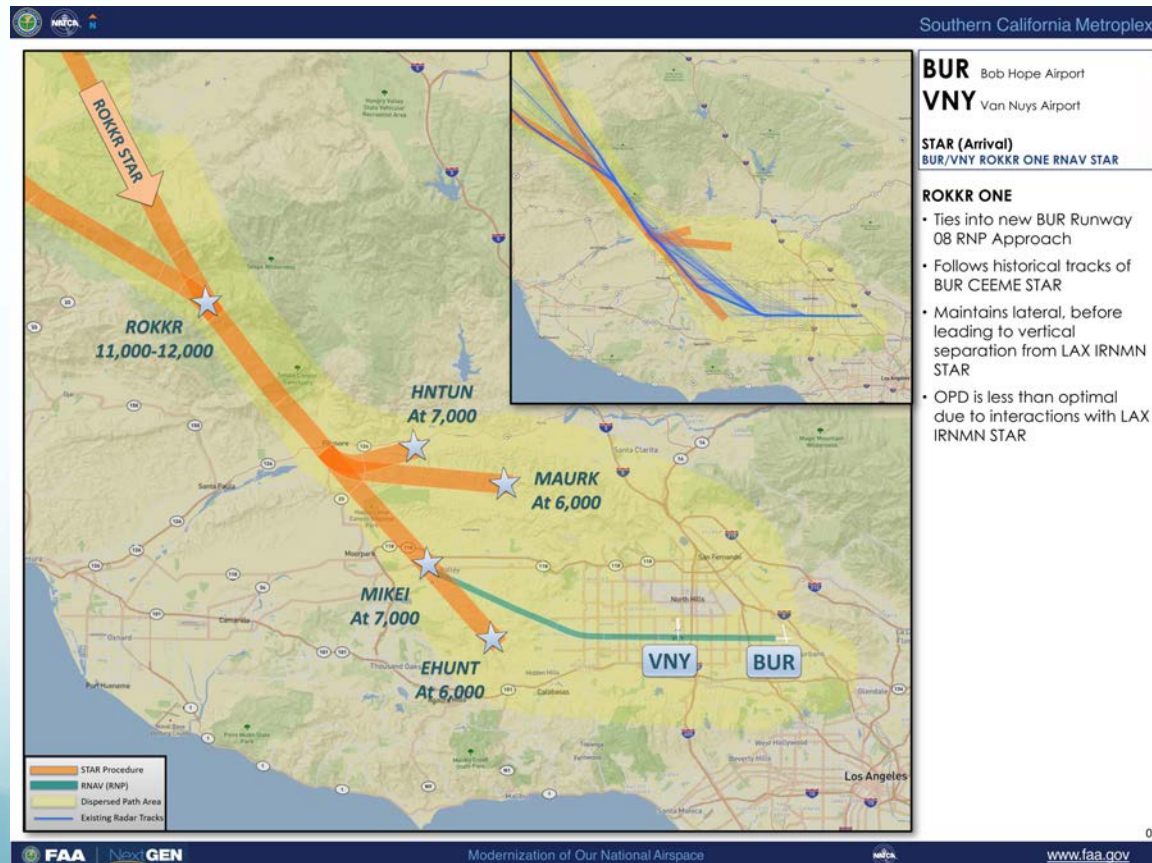
# January 2017

- The FAA held a Q&A meeting for residents about NextGen.



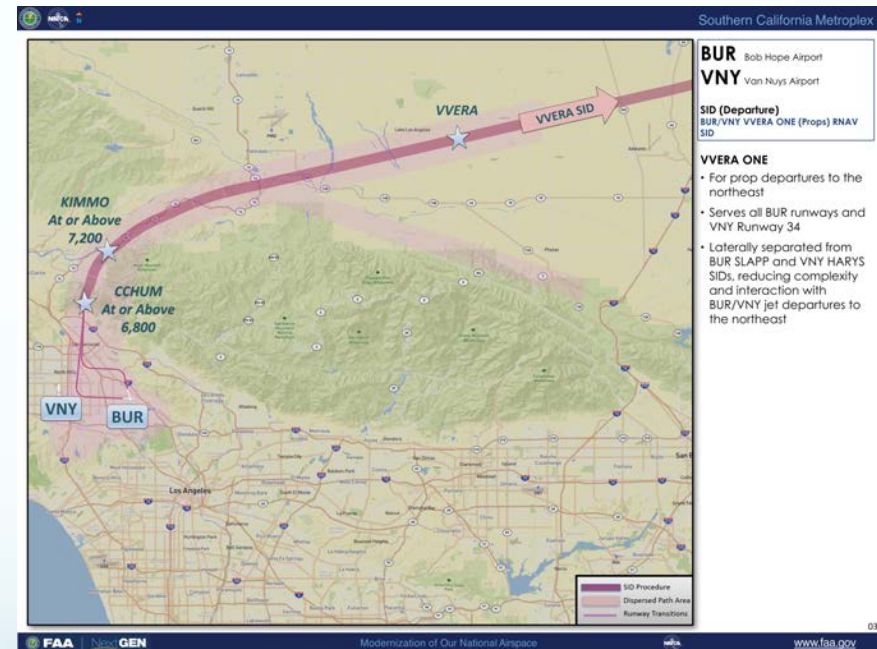
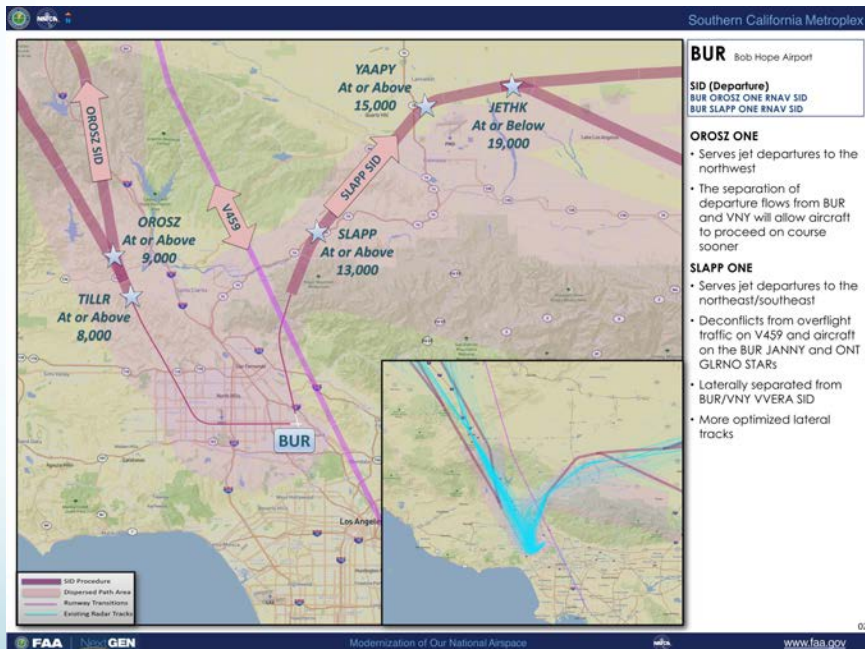
# January 2017

- New Arrival Procedures for BUR & VNY



# January 2017

- New Departure Procedures for BUR & VNY



Changes appear to only be well after takeoff



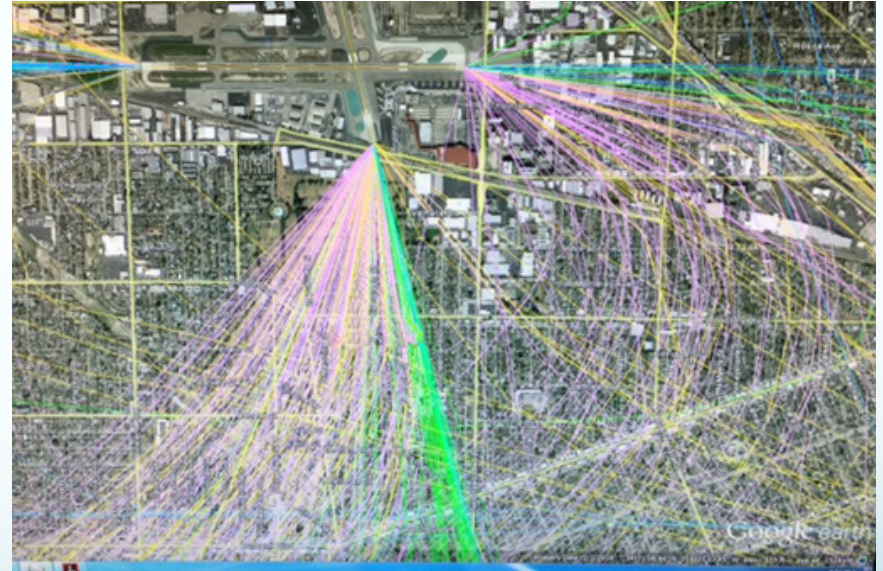


# January 2017

- Table set up to show how the new procedures will affect you



Current Path



Projected New Path

FAA says NextGen will be quieter, reduce emissions and make air travel more efficient. Research says the opposite.

Why is that?



“People only thought it got  
louder”

- FAA Representative





Is it getting louder or do we  
just "think" it's getting  
louder?



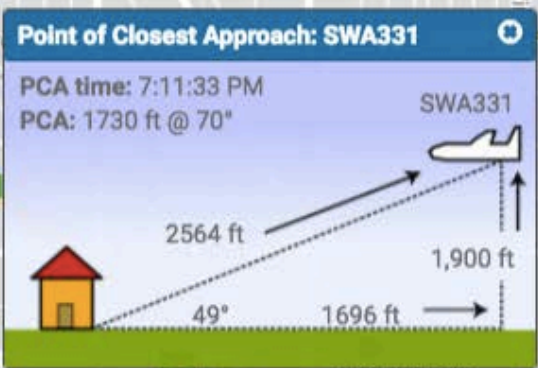
# Noise Readings



# February 2017

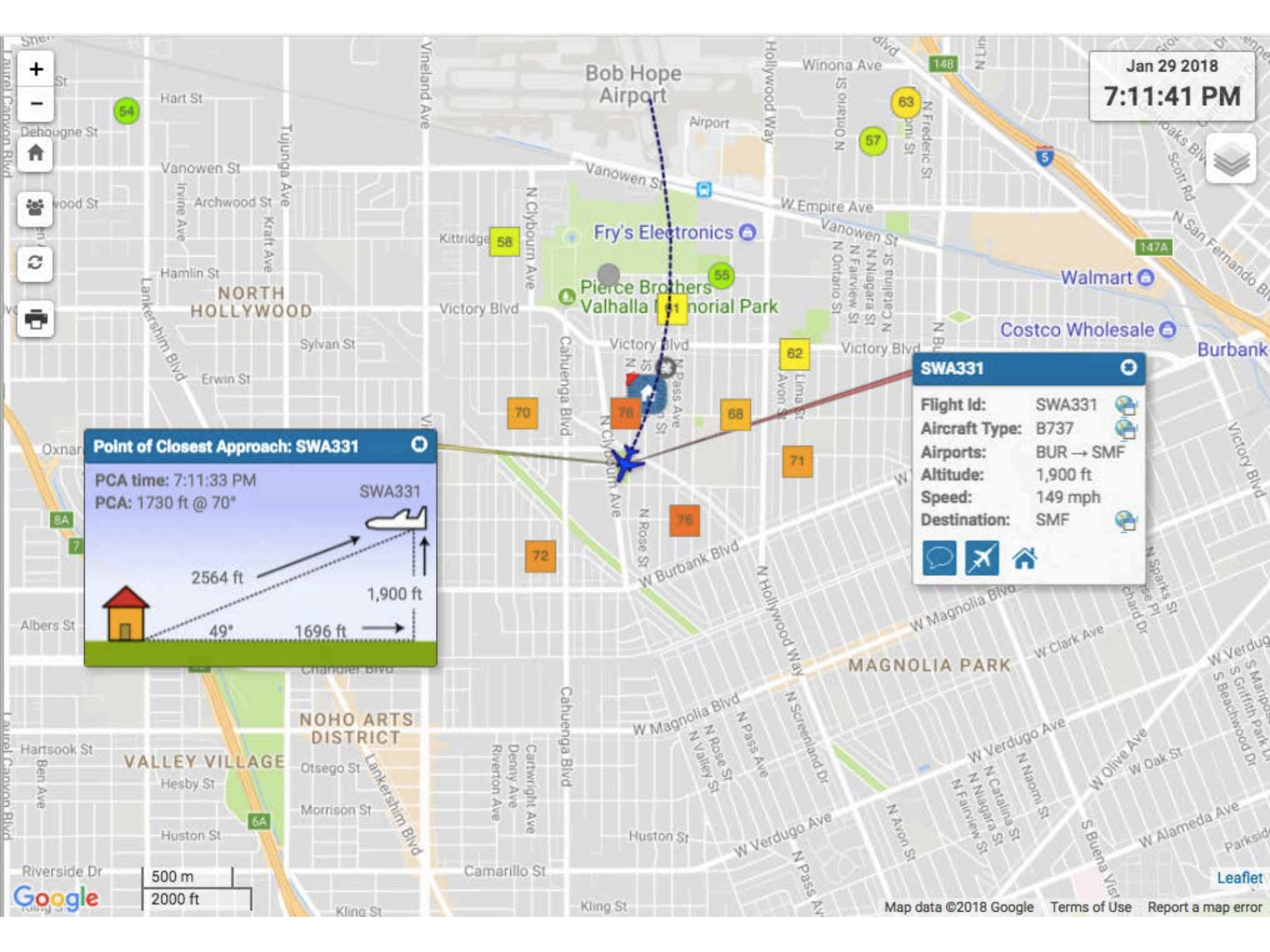


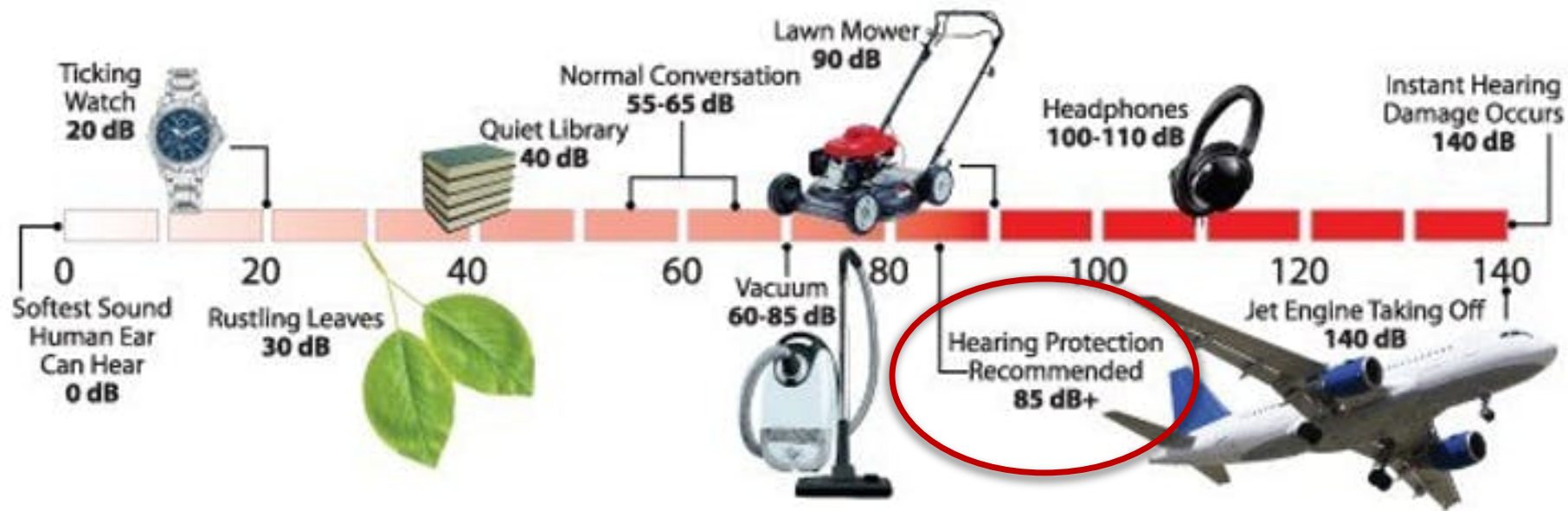
Jan 29 2018  
7:11:41 PM



**SWA331**

Flight Id:	SWA331
Aircraft Type:	B737
Airports:	BUR → SMF
Altitude:	1,900 ft
Speed:	149 mph
Destination:	SMF





Noise Benchmark:

**83dB or higher**

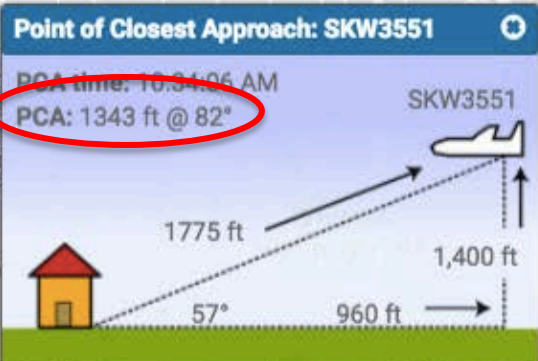
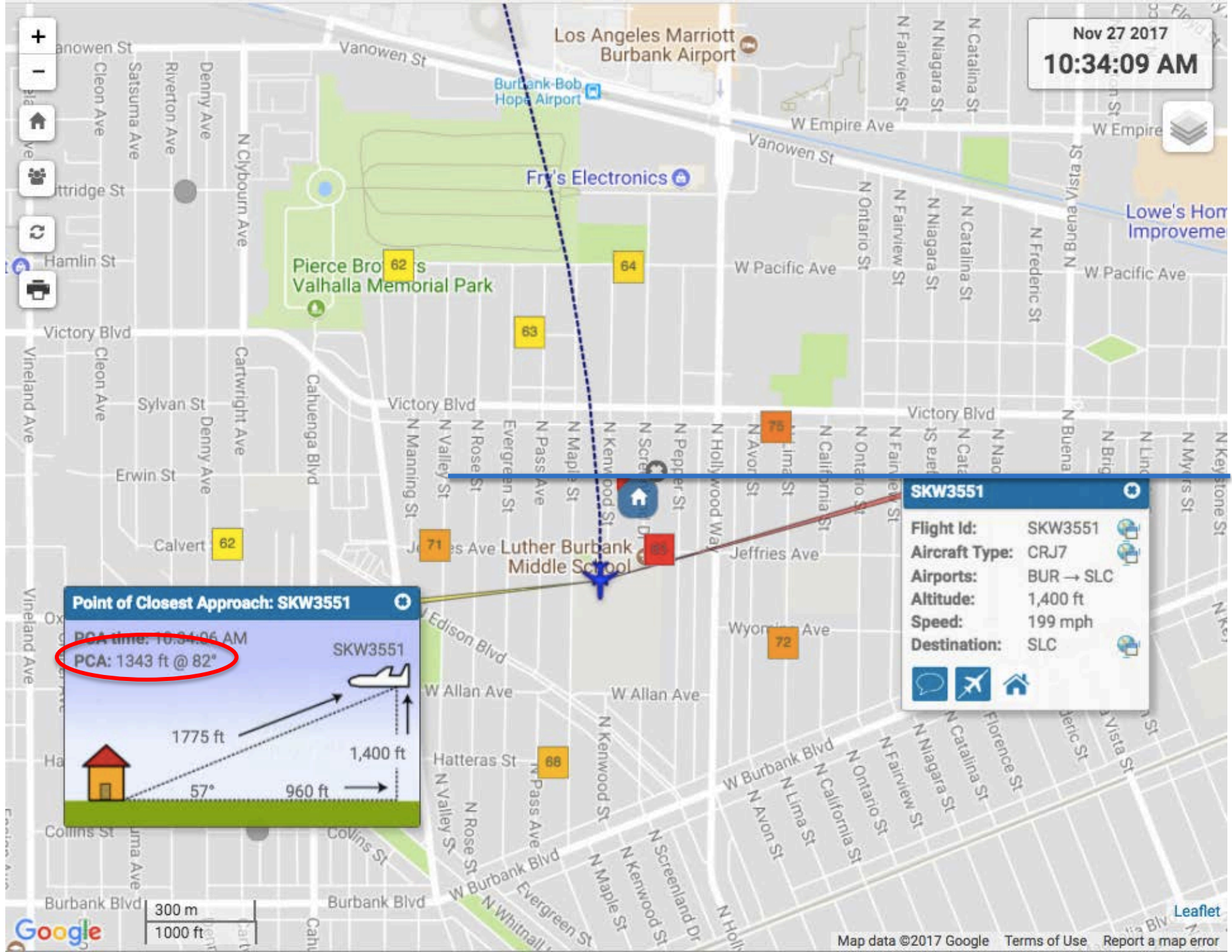




# Altitudes



Nov 27 2017  
10:34:09 AM



**SKW3551**

**Flight Id:** SKW3551

**Aircraft Type:** CRJ7

**Airports:** BUR → SLC

**Altitude:** 1,400 ft

**Speed:** 199 mph

**Destination:** SLC

Altitude Benchmark:

**Below 1800 feet**



Data reading taken from Airport Authority reader #19 (corner of Valley/Jeffries) 7am - 2pm

"Average" readings when no flights are going over is around 35-50DB. I'm logging reading from 65 - 100 DB's

Date	Day of Week	Time	DB Reading	Arrival / Departure	Flight ID:	Airline	Aircraft Type:	Airports	PCA Point of Closest Approach
12/18/16									
12/18/16	Sunday	7:23 AM	67	Departure	SKW101A	Sky West	CRJ2	BUR - SLC	1919
12/18/16	Sunday	7:44 AM	85	Departure	ASA531	Alaska	B738	BUR - SEA	1671
12/18/16	Sunday	8:25 AM	81	Departure	SWA3278	South West	B737	BUR - PHX	1682
12/18/16	Sunday	8:35 AM	79	Departure	SWA3072	South West	B737	BUR - PDX	1934
12/18/16	Sunday	8:46 AM	82	Departure	SWA888	South West	B737	BUR - OAK	1799
12/18/16	Sunday	8:59 AM	82	Departure	Not Listed	N/A	N/A	BUR - MMSL	1800
12/18/16	Sunday	9:30 AM	79	Departure	N462CB	Private	PRM1	BUR - SLC	1634
12/18/16	Sunday	9:42 AM	79	Departure	SWA610	South West	B737	BUR - LAS	2004
12/18/16	Sunday	10:03 AM	77	Departure	ASH5879	Mesa Air Shuttle	CRJ9	BUR - PHX	2078
12/18/16	Sunday	10:15 AM	81	Departure	SWA3118	South West	B737	BUR - DEN	1806
12/18/16	Sunday	10:21 AM	70	Departure	SKW5361	Sky West	CRJ2	BUR - SFO	1969
12/18/16	Sunday	10:25 AM	80	Departure	N/A	N/A	N/A	N/A	1970
12/18/16	Sunday	10:58 AM	82	Departure	ASA523	Alaska	B737	BUR - SEA	1889
12/18/16	Sunday	11:13 AM	80	Departure	SWA620	South West	B737	BUR - SMF	1952
12/18/16	Sunday	11:23 AM	80	Departure	SWA6364	South West	B737	BUR - OAK	2046
12/18/16	Sunday	11:28 AM	81	Departure	SWA658	South West	B737	BUR - LAS	1893
12/18/16	Sunday	11:31 AM	66	Departure	N121KL	Private	C56X	BUR - MQJ	1988
12/18/16	Sunday	11:33 AM	80	Departure	SWA2608	South West	B737	BUR - OAK	1914
12/18/16	Sunday	11:36 AM	72	Departure	N/A	N/A	N/A	BUR - OAK	1825
12/18/16	Sunday	11:42 AM	71	Departure	SKW4785	Sky West	CRJ2	BUR - SLC	1849
12/18/16	Sunday	11:53 AM	65	Departure	N70HC	Private	BE36	BUR - ?	2343
12/18/16	Sunday	12:07 PM	80	Departure	SWA2816	South West	B737	BUR - SMF	1959
12/18/16	Sunday	12:13 PM	78	Departure	SWA2791	South West	B737	BUR - SJC	2002
12/18/16	Sunday	12:16 PM	78	Departure	SWA1243	South West	B737	BUR - SFO	2500
12/18/16	Sunday	12:36 PM	80	Departure	SWA1527	South West	B737	BUR - OAK	1856
12/18/16	Sunday	12:41 PM	65	Departure	SKW3079	Sky West	CRJ2	BUR - PHX	2170
12/18/16	Sunday	12:47 PM	82	Departure	SWA534	South West	B737	BUR - LAS	1728
12/18/16	Sunday	1:01 PM	68	Departure	N/A	N/A	N/A	BUR - KOA	1983
12/18/16	Sunday	1:40 PM	71	Departure	JSX251	Jet SuiteX	E135	BUR - SJC	1858
12/18/16	Sunday	1:43 PM	81	Departure	SWA2779	South West	B737	BUR - LAS	1774
12/18/16	Sunday	1:44 PM	71	Departure	SKW5362	Sky West	CRJ2	BUR - SFO	1885
12/18/16	Sunday	1:58 PM	79	Departure	SKW3457	Sky West	CRJ2	BUR - PDX	1907
TOTAL # OF FLIGHTS:		32	1	Above 83 dB				Below 1800 feet	6
								Below 1600 feet	0



Data reading taken from Airport Authority reader #19 (corner of Valley/Jeffries) 7am - 2pm

"Average" readings when no flights are going over is around 35-50DB. I'm logging reading from 65 - 100 DB's

Date	Day of Week	Time	DB Reading	Arrival / Departure	Flight ID:	Airline	Aircraft Type:	Airports	CA Point of Closest Approach
1/22/17									
1/22/17	Sunday	7:05 AM	81	Departure	ASA531	Alaska	B737	BUR - SEA	1942
1/22/17	Sunday	7:08 AM	75	Departure	SKW5386	Sky West	CRJ2	BUR - DEN	1821
1/22/17	Sunday	8:36 AM	79	Departure	SWA31	South West	B737	BUR - DAL	1769
1/22/17	Sunday	8:56 AM	83	Departure	SWA2569	South West	B737	BUR - PHX	2034
1/22/17	Sunday	9:11 AM	80	Departure	SWA4064	South West	B737	BUR - LAS	1765
1/22/17	Sunday	9:12 AM	71	Departure	RSP977	Jet Suite Air	E50P	BUR - KHND	2037
1/22/17	Sunday	9:20 AM	78	Departure	SWA3048	South West	B737	BUR - OAK	2062
1/22/17	Sunday	9:27 AM	73	Departure	SKW5655	Sky West	CRJ2	BUR - SFO	1938
1/22/17	Sunday	9:38 AM	82	Departure	SKW3457	Sky West	E75L	BUR - PDX	1897
1/22/17	Sunday	9:55 AM	72	Departure	N/A	N/A	N/A	BUR - TUS	1842
1/22/17	Sunday	10:01 AM	82	Departure	ASH5879	Mesa Air	CRJ9	BUR - PHX	1839
1/22/17	Sunday	10:08 AM	80	Departure	SWA2579	South West	B737	BUR - SJC	1893
1/22/17	Sunday	10:20 AM	77	Departure	N/A	N/A	E50P	BUR - EUG	1672
1/22/17	Sunday	10:26 AM	85	Departure	SKW3565	Sky West	CRJ9	BUR - SLC	1713
1/22/17	Sunday	10:33 AM	85	Departure	SWA5092	South West	B737	BUR - OAK	1958
1/22/17	Sunday	11:13 AM	80	Departure	N/A	N/A	N/A	BUR - SLC	1814
1/22/17	Sunday	11:29 AM	86	Departure	ASA523	Alaska	B738	BUR - SEA	1846
1/22/17	Sunday	11:35 AM	85	Departure	SWA3496	South West	B737	BUR - LAS	1789
1/22/17	Sunday	11:59 AM	83	Departure	SWA2586	South West	B737	BUR - OAK	2189
1/22/17	Sunday	12:02 PM	83	Departure	SWA3322	South West	B737	BUR - PHX	1929
1/22/17	Sunday	12:39 PM	82	Departure	SWA3705	South West	B737	BUR - SMF	2141
1/22/17	Sunday	12:48 PM	81	Departure	SWA5514	South West	B737	BUR - SJC	1771
1/22/17	Sunday	12:59 PM	67	Departure	N903PJ	Private	PC12	BUR - FOT	2434
1/22/17	Sunday	1:10 PM	85	Departure	SWA2834	South West	B737	BUR - SMF	1846
1/22/17	Sunday	1:16 PM	71	Departure	URF140	Private	PC12	BUR - KSQL	2242
1/22/17	Sunday	1:22 PM	81	Departure	SWA3899	South West	B737	BUR - SFO	2305
1/22/17	Sunday	1:27 PM	82	Departure	ASH5944	Mesa Air	CRJ9	BUR - PHX	1833
1/22/17	Sunday	1:38 PM	79	Departure	LXJ92	Private	GLEK	BUR - YVR	2342
1/22/17	Sunday	1:49 PM	70	Departure	N52NG	Private	PC12	BUR - KHND	1966
TOTAL # OF FLIGHTS:		29	8	Above 83 dB					

Data reading taken from Airport Authority reader #19 (corner of Valley/Jeffries) 7am - 2pm

"Average" readings when no flights are going over is around 35-50DB. I'm logging reading from 65 - 100 DB's

Date	Day of Week	Time	DB Reading	Arrival / Departure	Flight ID:	Airline	Aircraft Type:	Airports	PCA Point of Closest Approach
<b>2/26/17</b>									
2/26/17	Sunday	7:04 AM	84	Departure	ASA531	Alaska	B737	BUR - SEA	1905
2/26/17	Sunday	7:12 AM	72	Departure	SKW5386	Sky West/Alaska	CRJ2	BUR - DEN	2202
2/26/17	Sunday	7:18 AM	81	Departure	SKW4672	Sky West/Alaska	CRJ9	BUR - SLC	2052
2/26/17	Sunday	7:58 AM	76	Departure	N/A	N/A	C750	BUR - SNA	1727
2/26/17	Sunday	8:18 AM	73	Departure	SKW5803	Sky West/Alaska	CRJ2	BUR - SFO	1953
2/26/17	Sunday	8:35 AM	81	Departure	SWA31	South West	B737	BUR - DAL	2062
2/26/17	Sunday	8:50 AM	74	Departure	N/A	N/A	N/A	BUR - MSP	1690
2/26/17	Sunday	8:55 AM	82	Departure	SWA2569	South West	B737	BUR - PHX	1862
2/26/17	Sunday	8:57 AM	78	Departure	N/A	N/A	N/A	BUR - MSP	2173
2/26/17	Sunday	9:00 AM	80	Departure	SWA4064	South West	B737	BUR - LAS	2070
2/26/17	Sunday	9:20 AM	81	Departure	SWA3048	South West	B737	BUR - OAK	1856
2/26/17	Sunday	9:21 AM	77	Departure	N/A	N/A	N/A	BUR - SJC	2104
2/26/17	Sunday	9:32 AM	82	Departure	SKW3457	Sky West/Alaska	E75L	BUR - PDX	1972
2/26/17	Sunday	9:34 AM	74	Departure	JSX252	Jet SuiteX	E135	BUR - KMTJ	2057
2/26/17	Sunday	9:39 AM	81	Departure	LXJ579	Flexjet	CL30	BUR - TEB	2057
2/26/17	Sunday	9:52 AM	81	Departure	ASH5879	Mesa Air	CRJ9	BUR - PHX	1866
2/26/17	Sunday	10:06 AM	81	Departure	SWA4238	South West	B737	BUR - LAS	2126
2/26/17	Sunday	10:13 AM	82	Departure	SWA2579	South West	B737	BUR - SJC	1989
2/26/17	Sunday	10:31 AM	82	Departure	SWA5092	South West	B737	BUR - OAK	1700
2/26/17	Sunday	10:33 AM	75	Departure	SKW4516	Sky West/Alaska	CRJ7	BUR - SLC	1865
2/26/17	Sunday	10:35 AM	79	Departure	N421JJ	Private	C421	BUR - FAT	1808
2/26/17	Sunday	10:42 AM	77	Departure	N/A	N/A	N/A	BUR - OAK	2060
2/26/17	Sunday	10:56 AM	83	Departure	SWA3496	South West	B737	BUR - LAS	1948
2/26/17	Sunday	11:01 AM	87	Departure	ASA523	Alaska	B738	BUR - SEA	2068
2/26/17	Sunday	11:33 AM	84	Departure	SWA2586	South West	B737	BUR - OAK	2021
2/26/17	Sunday	11:49 AM	84	Departure	SWA3705	South West	B737	BUR - SMF	2006
2/26/17	Sunday	11:53 AM	83	Departure	SWA3322	South West	B737	BUR - PHX	2290
2/26/17	Sunday	12:08 PM	81	Departure	SKW5361	Sky West/Alaska	E75L	BUR - SFO	1861
2/26/17	Sunday	12:27 PM	83	Departure	SWA3899	South West	B737	BUR - SFO	1799
2/26/17	Sunday	12:32 PM	81	Departure	SWA5514	South West	B737	BUR - SJC	2025
2/26/17	Sunday	12:57 PM	80	Departure	ASH5944	Mesa Air	CRJ9	BUR - PHX	1960
2/26/17	Sunday	1:05 PM	81	Departure	KCE3	Private	CL35	BUR - YSJ	1833
2/26/17	Sunday	1:21 PM	80	Departure	SWA2834	South West	B737	BUR - SMF	1826
2/26/17	Sunday	1:30 PM	75	Departure	JSX203	Jet SuiteX	E135	BUR - SJC	1793
2/26/17	Sunday	1:38 PM	70	Departure	SKW5287	Sky West/Alaska	CRJ2	BUR - DEN	2034
2/26/17	Sunday	1:49 PM	67	Departure	N488EA	Private	PA46	BUR - KO61	1989
2/26/17	Sunday	1:55 PM	84	Departure	SWA4922	South West	B737	BUR - DEN	1763
<b>TOTAL # OF FLIGHTS:</b>		<b>37</b>	<b>8</b>	<b>Above 83 dB</b>				<b>Below 1800 feet</b>	<b>6</b>
								<b>Below 1600 feet</b>	<b>0</b>



Above 83 dB

Below 1800 ft

Below 1600 ft

12/18/16

1

6

0

1/22/17

8

7

0

2/26/17

8

6

0

AVERAGE

5.6

6.3

0



# BUR Quarterly Noise Reports





ACOUSTICAL ANALYSIS ASSOCIATES, INCORPORATED

AAAI Report 1513  
AAAI Project 88018

## QUARTERLY NOISE MONITORING AT HOLLYWOOD BURBANK AIRPORT SECOND QUARTER 2017

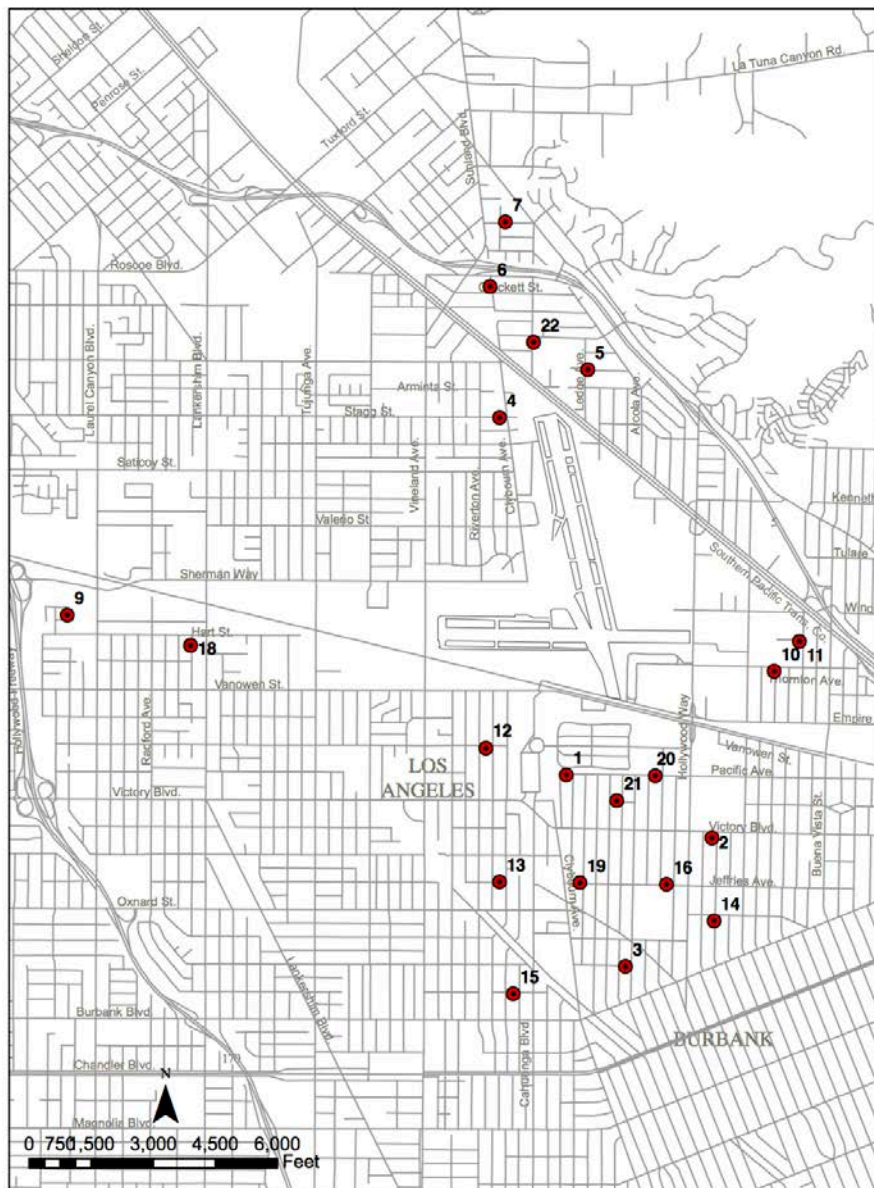
AUGUST 2017

Prepared for:



950 Enchanted Way • Suite 105 • Simi Valley, CA 93065 • (805) 584-9428 • Fax (805) 584-8274





BURBANK AIRPORT - NOISE MONITOR LOCATIONS

# Sound Readers 1-22

(Readers 8 & 17  
no longer exist)



TABLE 1. CNEL VALUES FOR APRIL 2017

RMS NUMBER																					
Date	1	2	3	4	5	6	7	9	10	11	12	13	14	15	16	18	19	20	21	22	
04/01/17	60.1	57.7	59.0	56.0	53.7	49.7	57.2	58.8	46.4	44.5	52.3	57.3	54.9	58.5	59.8	58.8	61.4	63.7	65.4	61.9	
04/02/17	61.0	58.5	59.4	55.0	55.5	48.3	55.6	61.9	51.1	48.3	52.9	57.7	55.7	59.3	60.2	63.1	62.3	64.1	65.5	59.3	
04/03/17	62.6	59.5	61.9	54.6	59.1	51.5	55.4	62.1	56.8	50.2	53.7	59.6	57.0	60.7	62.4	61.3	63.3	65.2	67.0	61.9	
04/04/17	62.2	59.6	60.3	52.5	55.3	56.7	56.8	61.6	53.7	53.5	53.8	59.2	56.7	60.2	61.2	61.8	63.1	65.4	66.6	63.2	
04/05/17	61.8	59.1	59.8	53.8	56.0	51.8	55.4	62.1	55.5	54.8	55.3	59.1	56.3	59.6	60.8	62.1	62.6	64.7	66.1	60.7	
04/06/17	64.8	60.8	61.3	58.0	56.5	49.1	57.4	63.3	52.2	50.4	56.6	60.4	57.4	61.6	62.0	62.9	64.2	66.7	67.8	59.0	
04/07/17	62.1	59.3	59.8	55.2	57.7	45.3	52.2	63.6	52.5	48.5	54.2	58.8	56.1	59.7	61.4	62.7	62.6	64.7	66.6	57.1	
04/08/17	60.5	58.1	59.3	55.4	60.0	59.3	58.2	58.7	50.5	47.5	51.6	56.1	56.0	58.2	62.1	58.1	63.3	64.0	65.6	62.0	
04/09/17	60.8	58.5	59.5	52.0	53.9	46.5	53.4	60.6	50.8	47.6	52.4	57.2	55.6	59.2	60.5	60.0	62.2	63.9	65.7	57.9	
04/10/17	61.8	59.7	60.9	54.5	56.5	45.6	52.5	61.0	51.3	50.2	54.4	58.2	57.2	59.8	61.7	60.5	63.1	65.3	66.7	57.7	
04/11/17	62.0	59.7	59.6	54.4	55.0	53.4	55.7	61.9	54.0	52.9	55.0	59.4	56.4	59.5	60.7	60.9	63.2	64.6	66.2	61.0	
04/12/17	62.7	60.7	61.5	53.2	55.8	54.7	57.7	62.5	53.8	53.1	54.4	58.9	58.1	60.4	62.7	----	63.5	65.9	67.4	63.0	
04/13/17	62.4	60.5	61.6	52.2	56.7	51.3	56.9	63.0	52.7	55.9	54.3	59.6	57.9	60.8	62.5	----	63.6	66.1	67.4	61.2	
04/14/17	62.2	59.8	60.4	54.7	55.2	55.2	58.3	61.7	49.7	51.4	53.1	59.0	56.6	59.9	61.6	----	62.7	65.2	66.4	64.0	
04/15/17	60.0	56.5	57.2	53.8	54.6	50.8	52.4	58.6	48.5	50.6	51.0	57.4	53.6	57.8	58.1	----	60.3	62.2	63.8	57.5	
04/16/17	61.1	58.1	58.6	53.6	55.4	51.2	54.9	60.0	50.5	51.5	52.8	57.6	55.3	58.9	60.3	----	61.9	63.6	65.5	61.0	
04/17/17	62.5	60.8	61.8	52.2	54.7	48.1	52.1	62.4	53.3	52.1	53.5	58.6	58.4	60.8	62.9	----	63.9	66.3	67.8	56.8	
04/18/17	63.0	60.2	61.0	56.9	56.9	59.7	52.7	62.9	53.9	55.1	54.3	59.7	57.6	60.9	62.0	----	63.9	65.6	67.4	65.1	
04/19/17	63.7	60.7	61.9	59.0	56.3	50.3	56.3	62.5	52.4	50.0	55.9	59.5	58.1	61.7	66.6	----	64.6	67.3	68.8	61.2	
04/20/17	62.3	58.5	60.5	60.9	62.2	62.4	60.2	60.5	51.8	54.1	56.6	57.0	57.7	57.8	65.0	----	61.7	65.5	66.8	65.5	
04/21/17	61.6	58.7	60.3	57.0	58.2	53.3	55.2	61.3	52.3	53.7	53.1	56.8	56.7	59.5	61.4	59.1	62.7	64.8	66.7	60.5	
04/22/17	59.7	53.4	56.5	50.8	51.8	49.5	51.9	58.2	51.2	50.7	52.6	56.7	53.2	57.7	58.2	57.7	59.9	62.0	63.9	56.1	
04/23/17	61.7	58.4	59.2	58.3	56.6	54.5	60.3	60.8	49.1	48.6	54.3	58.9	55.5	60.3	59.9	60.2	62.9	63.8	66.0	65.9	
04/24/17	62.5	60.0	61.1	58.4	58.1	58.3	59.1	62.2	54.8	57.0	54.1	59.3	57.4	60.9	61.8	62.0	63.7	65.4	67.1	63.6	
04/25/17	58.6	55.8	55.3	60.6	61.6	63.2	59.5	57.5	47.3	53.2	50.1	52.1	55.6	42.2	63.4	59.4	51.7	61.2	62.1	64.9	
04/26/17	61.7	60.2	61.4	63.1	63.5	64.1	59.4	59.1	56.2	53.4	54.1	54.1	59.3	56.6	65.0	58.4	60.7	65.7	66.6	65.9	
04/27/17	60.9	58.4	60.6	62.3	63.1	63.9	59.6	59.4	52.9	55.0	52.0	55.3	58.7	57.5	66.6	59.4	60.4	65.2	66.1	65.5	
04/28/17	61.2	54.3	56.6	63.6	64.4	64.9	61.0	54.2	50.8	55.4	48.1	48.8	55.5	48.7	64.7	56.8	53.7	62.9	63.8	67.5	
04/29/17	57.2	49.7	52.8	57.1	57.2	57.4	54.4	54.7	44.6	45.9	47.3	54.0	51.4	55.7	57.6	54.8	54.4	59.1	60.1	62.1	
04/30/17	60.6	58.3	59.3	54.5	56.0	53.9	57.4	58.0	49.5	48.2	52.1	57.0	55.5	59.1	60.3	57.9	62.2	64.1	65.9	63.4	
AVERAGE	61.7	58.9	60.0	57.6	58.5	57.9	57.1	61.0	52.5	52.4	53.6	58.0	56.7	59.3	62.4	60.4	62.3	64.8	66.2	62.7	
NO. DAYS	30	30	30	30	30	30	30	30	30	30	30	30	30	30	30	21	30	30	30	30	

# Daily Sound Averages

## April 2017





TABLE 2. CNEL VALUES FOR MAY 2017

RMS NUMBER

Date	1	2	3	4	5	6	7	9	10	11	12	13	14	15	16	18	19	20	21	22
05/01/17	62.3	60.7	60.3	59.6	58.9	56.0	59.5	59.8	54.9	48.7	58.2	58.2	57.2	61.6	65.8	62.8	65.3	69.7	70.6	61.3
05/02/17	63.4	60.1	60.8	58.3	56.7	53.8	60.0	59.9	54.2	55.0	52.8	59.2	58.1	61.1	62.6	62.9	64.0	65.9	67.5	57.8
05/03/17	63.3	59.6	60.5	58.5	55.4	53.5	59.2	62.1	52.3	51.9	51.8	59.4	58.2	58.6	58.1	58.1	60.2	62.0	64.2	59.7
05/04/17	65.9	63.1	64.3	60.8	59.9	51.2	56.1	63.5	51.5	52.1	51.6	60.2	61.0	60.1	61.5	61.0	62.9	64.9	66.5	59.5
05/05/17	63.2	57.3	60.8	54.2	56.3	48.6	51.5	63.7	51.9	55.0	54.4	59.9	57.4	60.2	62.6	61.2	63.4	65.5	67.0	61.7
05/06/17	60.9	56.4	57.1	55.5	53.8	47.2	52.3	58.8	49.9	47.0	51.5	58.2	53.5	60.6	63.0	61.7	63.3	65.5	67.7	54.4
05/07/17	62.1	59.5	60.3	58.2	55.6	46.8	55.2	61.7	51.1	47.0	47.8	58.5	---	60.9	61.6	61.3	63.6	65.1	66.8	52.3
05/08/17	62.6	60.5	61.6	56.7	54.2	51.6	56.6	61.3	52.2	51.0	46.1	58.6	---	62.9	63.7	60.7	65.8	67.2	69.1	---
05/09/17	63.7	60.3	61.0	58.5	57.0	47.3	48.4	62.3	51.4	51.2	52.4	60.4	---	61.5	62.7	61.3	64.1	65.9	67.7	---
05/10/17	62.8	60.5	60.2	55.8	57.4	64.1	51.8	61.8	50.0	50.3	51.7	60.1	---	56.1	58.5	56.6	58.2	58.7	61.5	---
05/11/17	64.3	61.7	62.6	58.7	59.1	57.3	63.5	58.3	52.8	52.1	54.7	61.3	60.6	60.0	59.5	60.2	62.1	63.6	65.6	---
05/12/17	63.8	59.6	61.0	57.3	56.7	55.4	58.4	---	47.1	48.3	54.5	60.5	57.0	60.7	61.7	61.0	63.2	65.6	66.9	---
05/13/17	59.3	52.8	54.6	58.3	60.2	57.3	57.0	---	53.2	52.3	53.7	56.2	52.2	60.7	61.3	62.7	63.3	65.2	66.6	---
05/14/17	61.2	58.0	58.7	54.1	56.1	50.1	53.1	---	50.9	49.3	55.1	58.8	54.4	61.4	62.2	63.0	64.2	65.9	67.5	---
05/15/17	62.7	59.8	60.4	54.3	57.6	49.7	51.2	---	54.0	51.7	54.0	59.3	56.6	61.1	63.7	61.4	64.4	66.7	68.3	---
05/16/17	63.6	60.1	60.5	56.4	58.0	54.2	55.2	---	50.9	50.7	53.3	60.8	57.1	59.7	63.7	59.8	63.0	65.8	67.2	---
05/17/17	63.7	60.7	61.4	58.7	55.9	51.5	53.4	---	50.6	50.6	53.7	60.7	58.0	57.2	60.9	56.1	59.8	63.8	64.9	---
05/18/17	63.4	61.5	62.2	57.0	55.2	52.5	61.6	---	50.5	52.9	54.2	59.2	59.0	60.0	61.8	62.9	63.3	65.3	66.9	---
05/19/17	61.9	60.1	60.8	56.9	59.8	55.8	62.0	---	54.4	53.7	54.5	57.9	57.8	60.4	62.0	61.9	63.4	65.3	67.2	---
05/20/17	60.1	57.5	57.7	55.7	57.8	60.5	60.0	---	52.3	47.8	53.8	56.0	55.7	60.3	62.8	62.5	63.5	66.1	67.7	---
05/21/17	61.4	59.3	60.5	57.2	60.0	54.5	58.7	---	50.3	50.0	54.7	57.4	56.9	61.6	62.5	61.2	63.8	65.9	67.5	---
05/22/17	62.0	60.1	61.2	58.5	54.5	51.8	57.6	---	58.2	58.2	53.8	57.8	57.6	61.8	62.8	61.4	64.6	66.7	68.2	---
05/23/17	62.8	60.7	61.8	58.0	55.5	54.5	59.3	---	52.7	52.8	48.9	58.4	58.3	62.7	63.0	61.8	64.2	66.8	68.4	---
05/24/17	63.1	60.2	61.5	56.8	56.3	53.2	59.0	---	53.7	51.8	52.4	60.0	57.8	58.1	59.5	58.4	61.0	63.9	65.3	---
05/25/17	63.5	61.1	61.8	56.2	60.3	53.6	59.3	---	53.0	51.6	53.8	60.4	37.3	58.2	58.2	59.8	60.6	62.0	63.7	---
05/26/17	63.0	61.3	62.0	55.7	57.5	49.3	51.6	---	55.7	54.4	55.5	59.0	59.9	61.5	61.7	60.8	64.0	65.4	67.3	---
05/27/17	60.0	58.2	58.9	50.6	54.2	49.6	52.9	---	51.1	51.5	55.7	56.8	43.9	60.5	61.8	62.3	63.3	65.6	66.9	---
05/28/17	60.1	56.8	57.5	51.7	51.9	46.8	54.3	---	51.6	47.8	55.1	57.3	58.9	59.9	61.3	61.7	62.8	65.0	66.6	---
05/29/17	63.2	59.8	61.1	59.3	56.5	49.5	57.0	---	50.7	46.1	53.5	60.0	59.9	61.7	59.6	63.2	65.2	66.6	64.4	---
05/30/17	63.0	59.5	60.3	54.4	56.2	48.8	52.9	---	55.1	52.4	50.9	59.4	60.2	62.6	60.2	63.3	65.7	67.1	64.9	---
05/31/17	62.7	59.8	60.1	53.5	56.0	49.2	53.4	---	51.7	51.7	55.5	59.2	60.2	62.3	61.5	63.2	65.3	66.8	63.2	---
AVERAGE	62.8	59.9	60.8	57.2	57.3	54.8	57.7	61.5	52.8	52.0	53.8	59.2	57.9	60.8	62.0	61.5	63.6	65.7	66.9	59.1
NO. DAYS	31	31	31	31	31	31	31	11	31	31	31	31	27	31	31	31	31	31	31	7





TABLE 3. CNEL VALUES FOR JUNE 2017

RMS NUMBER																							
Date	1	2	3	4	5	6	7	9	10	11	12	13	14	15	16	18	19	20	21	22			
06/01/17	62.2	59.6	60.6	56.1	56.1	54.5	55.9	---	51.5	49.9	53.1	58.4	---	60.1	61.6	61.5	63.1	65.1	66.5	---			
06/02/17	62.2	60.2	60.9	58.0	54.7	52.8	60.3	---	50.8	49.6	54.6	58.2	---	60.5	62.1	60.7	63.3	65.4	67.0	---			
06/03/17	59.4	57.1	58.2	56.1	52.9	49.9	53.5	---	61.3	55.0	51.4	56.2	---	57.5	59.3	58.9	60.3	62.9	64.3	---			
06/04/17	61.6	58.4	59.7	58.2	55.3	50.6	56.9	---	51.1	49.9	52.9	57.8	---	59.3	60.7	62.1	62.6	64.3	66.1	---			
06/05/17	62.4	59.6	60.2	56.8	57.4	56.4	55.7	---	48.7	49.3	54.4	58.8	---	60.4	61.2	61.3	63.1	65.0	66.7	---			
06/06/17	61.9	59.3	59.8	55.2	57.0	52.0	55.2	---	53.5	52.5	53.6	59.6	---	59.9	63.1	62.6	62.9	64.6	66.1	---			
06/07/17	62.3	59.2	60.0	52.7	57.5	51.0	54.5	---	49.7	54.5	52.2	59.2	---	59.6	61.3	62.0	62.6	65.2	66.5	---			
06/08/17	62.7	61.1	62.0	57.3	57.2	55.2	58.5	---	52.9	50.7	55.1	58.8	---	60.6	63.8	63.2	63.9	66.8	68.0	---			
06/09/17	60.1	58.7	59.8	58.3	60.5	62.5	62.3	---	55.9	56.0	56.3	56.9	---	58.8	63.2	61.0	62.1	64.5	66.1	---			
06/10/17	60.5	57.7	57.9	54.9	56.5	41.6	47.7	---	49.6	50.6	53.0	57.8	---	58.8	58.8	60.8	61.2	63.1	64.8	---			
06/11/17	62.7	59.6	60.4	57.0	57.7	50.2	54.6	---	50.7	48.7	53.9	59.2	---	60.5	61.3	62.1	63.4	65.1	66.9	---			
06/12/17	62.0	59.5	60.7	53.3	57.1	53.6	60.7	64.1	53.4	56.1	54.5	58.5	---	60.2	61.6	61.0	63.1	65.0	66.7	---			
06/13/17	63.1	61.2	62.2	57.5	55.3	52.4	55.8	62.4	58.5	55.3	55.0	59.1	---	60.9	63.2	61.7	63.9	66.8	67.9	---			
06/14/17	62.7	60.9	62.8	60.9	60.3	51.4	56.7	63.1	54.2	52.8	55.0	58.3	---	60.1	63.4	62.6	63.4	66.5	67.9	---			
06/15/17	62.1	60.5	61.9	57.4	56.3	48.4	53.5	63.5	50.4	48.8	54.0	58.0	---	60.7	62.7	63.8	63.8	66.0	67.7	---			
06/16/17	61.8	59.9	61.7	57.8	57.7	55.7	59.7	62.7	52.7	50.5	54.2	57.3	59.4	59.6	62.6	61.7	63.1	65.7	67.5	---			
06/17/17	59.8	57.7	59.5	55.0	53.6	49.7	56.2	59.8	49.1	45.2	54.2	55.8	55.7	58.0	59.8	60.6	60.5	63.3	65.0	---			
06/18/17	61.8	59.9	60.7	58.0	56.2	53.5	57.9	61.4	54.8	47.5	53.7	57.1	57.4	59.8	61.8	60.7	63.0	65.4	67.0	---			
06/19/17	62.3	60.1	61.6	56.7	54.8	52.1	54.5	62.0	54.1	53.5	54.3	57.8	58.2	59.4	62.4	61.1	62.7	65.7	67.2	---			
06/20/17	62.4	60.8	61.8	59.9	53.9	54.7	56.1	63.7	54.5	56.8	54.7	58.3	58.6	59.6	62.7	63.4	63.1	66.1	67.4	---			
06/21/17	62.8	61.0	62.3	58.5	53.4	52.2	56.5	62.9	52.7	51.3	55.8	58.3	58.9	59.9	63.3	63.0	63.3	66.9	68.1	---			
06/22/17	64.5	62.3	63.0	60.6	53.4	53.2	56.5	63.6	55.5	53.5	56.2	59.7	59.9	61.8	64.0	63.5	65.2	67.5	69.2	---			
06/23/17	62.8	61.2	61.5	57.6	56.4	54.2	59.1	63.7	55.7	56.2	55.3	58.4	58.6	60.2	63.5	62.9	63.6	67.0	68.2	---			
06/24/17	61.5	59.4	61.1	55.4	55.4	48.4	53.1	61.1	53.1	50.5	53.2	57.3	57.6	59.3	62.0	60.6	62.1	65.1	66.5	---			
06/25/17	62.4	60.5	63.1	57.2	54.4	53.2	57.0	60.6	52.1	48.9	54.3	57.6	58.7	59.8	64.0	60.2	63.5	66.7	68.5	---			
06/26/17	60.3	58.6	60.1	55.2	51.0	50.7	55.7	61.7	54.7	58.9	52.9	56.0	56.9	58.5	61.1	62.4	61.8	64.5	66.2	---			
06/27/17	61.7	59.3	59.5	56.2	55.8	56.6	63.0	60.0	54.4	54.4	54.2	58.0	57.3	58.7	60.9	60.8	62.0	64.9	66.2	---			
06/28/17	62.0	59.3	60.3	55.3	55.9	51.3	56.8	63.5	52.5	53.5	53.3	58.7	57.2	60.3	61.5	63.2	62.7	64.8	66.4	---			
06/29/17	62.2	60.7	61.2	53.4	56.2	51.6	53.8	64.3	55.0	48.9	53.9	59.1	57.8	61.1	62.1	63.6	64.1	66.0	67.7	---			
06/30/17	63.0	60.2	61.2	54.1	55.5	47.9	52.7	63.4	54.8	50.6	53.2	58.2	58.7	60.0	62.9	62.9	63.3	65.9	67.5	---			
AVERAGE	62.1	59.9	61.0	57.1	56.3	53.8	57.4	62.7	54.2	53.2	54.2	58.2	58.2	59.9	62.2	62.0	63.0	65.5	67.1	ERR			
NO. DAYS	30	30	30	30	30	30	30	19	30	30	30	30	15	30	30	30	30	30	30	0			
QTR. AVG.	62.2	59.6	60.6	57.2	57.4	55.8	57.3	61.7	53.2	52.5	53.7	58.4	57.4	60.0	62.1	61.4	62.9	65.2	66.6	62.2			
NO. DAYS	91	91	91	91	91	91	91	60	91	91	91	91	72	91	91	82	91	91	91	37			

# Daily Sound Averages

## June 2017





TABLE 4. AVERAGE CNEL VALUES

Site No.	3rd Quarter 2016	4th Quarter 2016	1st Quarter 2017	2nd Quarter 2017	4 Quarter Average
1	61.7	61.6	63.3	62.2	62.2
2	59.3	58.9	59.0	59.6	59.2
3	60.2	60.0	60.0	60.6	60.2
4	56.2	57.3	57.4	57.2	57.1
5	56.2	57.9	57.8	57.4	57.3
6	52.1	55.5	55.1	55.8	54.8
7	53.7	56.4	55.4	57.3	55.9
9	62.2	61.1	61.4	61.7	61.6
10	55.0	54.2	53.2	53.2	54.0
11	52.6	53.6	52.8	52.5	52.9
12	53.6	54.2	54.4	53.7	54.0
13	57.8	57.5	58.2	58.4	58.0
14	56.6	56.7	56.7	57.4	56.9
15	59.4	59.2	59.4	60.0	59.5
16	61.5	61.8	61.6	62.1	61.8
18	61.7	60.7	61.1	61.4	61.2
19	62.6	62.2	62.3	62.9	62.5
20	64.9	64.9	64.7	65.2	65.0
21	66.6	66.3	66.4	66.6	66.5
22	59.2	61.4	60.9	62.2	61.0

## Quarterly Average



## 2017 2nd Quarter Report

100% NextGen					
Site #	3rd Q 2016	4th Q 2016	1st Q 2017	2nd Q 2017	4 Q Average 2017
1	61.7	61.6	63.3	62.2	62.2
2	59.3	58.9	59.0	59.6	59.2
3	60.2	60.0	60.0	60.6	60.2
4	56.2	57.3	57.4	57.2	57.1
5	56.2	57.9	57.8	57.4	57.3
6	52.1	55.5	55.1	55.8	54.8
7	53.7	56.4	55.4	57.3	55.9
8	N/A	N/A	N/A	N/A	N/A
9	62.2	61.1	61.4	61.7	61.6
10	55.0	54.2	53.2	53.2	54.0
11	52.6	53.6	52.8	52.5	52.9
12	53.6	54.2	54.4	53.7	54.0
13	57.8	57.5	58.2	58.4	58.0
14	56.6	56.7	56.7	57.4	56.9
15	59.4	59.2	59.4	60.0	59.5
16	61.5	61.8	61.6	62.1	61.8
17	N/A	N/A	N/A	N/A	N/A
18	61.7	60.7	61.1	61.4	61.2
19	62.6	62.2	62.3	62.9	62.5
20	64.9	64.9	64.7	65.2	65.0
21	66.6	66.3	66.4	66.6	66.5
22	59.2	61.4	60.9	62.2	61.0
Total Louder	4	2	3	12	

**Red = Louder than other quarter**

1st Quarter = January 1 - March 31

2nd Quarter = April 1 - June 30

3rd Quarter = July 1 - September 30

4th Quarter = October 1 - December 31

Yellow = Above 65DB

**Total Operations 2016**

132,407

**Total Air Carriers 2016**

49,534

# Quarterly Average

## Red = Loudest



## 2nd Quarter Report 2012, 2013, 2014, 2015, 2016 vs 2017

Site #	100% NextGen		100% NextGen		100% NextGen		100% NextGen		100% NextGen	
	2nd Q 2012	2nd Q 2017	2nd Q 2013	2nd Q 2017	2nd Q 2014	2nd Q 2017	2nd Q 2015	2nd Q 2017	2nd Q 2016	2nd Q 2017
1	61.6	<b>62.2</b>	61.8	<b>62.2</b>	60.8	<b>62.2</b>	60.3	<b>62.2</b>	61.5	<b>62.2</b>
2	58.8	<b>59.6</b>	58.7	<b>59.6</b>	58.4	<b>59.6</b>	58.3	<b>59.6</b>	57.9	<b>59.6</b>
3	60.0	<b>60.6</b>	59.4	<b>60.6</b>	59.3	<b>60.6</b>	59.1	<b>60.6</b>	59.7	<b>60.6</b>
4	56.4	<b>57.2</b>	56.6	<b>57.2</b>	56.6	<b>57.2</b>	55.0	<b>57.2</b>	56.5	<b>57.2</b>
5	<b>59.6</b>	57.4	55.6	<b>57.4</b>	55.9	<b>57.4</b>	55.7	<b>57.4</b>	56.4	<b>57.4</b>
6	54.4	<b>55.8</b>	54.6	<b>55.8</b>	53.9	<b>55.8</b>	53.2	<b>55.8</b>	53.8	<b>55.8</b>
7	<b>58.7</b>	57.3	55.4	<b>57.3</b>	55.2	<b>57.3</b>	54.4	<b>57.3</b>	54.9	<b>57.3</b>
8	N/A	N/A	N/A	N/A	N/A	N/A	N/A	N/A	N/A	N/A
9	61.6	<b>61.7</b>	<b>62.3</b>	61.7	61.4	<b>61.7</b>	60.1	<b>61.7</b>	<b>61.8</b>	61.7
10	<b>54.1</b>	53.2	<b>53.7</b>	53.2	<b>53.5</b>	53.2	52.5	<b>53.2</b>	<b>53.5</b>	53.2
11	<b>54.2</b>	52.5	<b>53.2</b>	52.5	<b>53.7</b>	52.5	51.7	<b>52.5</b>	<b>53.3</b>	52.5
12	<b>57.0</b>	53.7	<b>53.8</b>	53.7	53.1	<b>53.7</b>	53.1	<b>53.7</b>	53.6	<b>53.7</b>
13	<b>60.1</b>	58.4	<b>59.1</b>	58.4	57.7	<b>58.4</b>	58.0	<b>58.4</b>	57.8	<b>58.4</b>
14	56.1	<b>57.4</b>	55.8	<b>57.4</b>	55.7	<b>57.4</b>	55.8	<b>57.4</b>	56.1	<b>57.4</b>
15	<b>60.3</b>	60.0	59.6	<b>60.0</b>	58.7	<b>60.0</b>	58.4	<b>60.0</b>	59.0	<b>60.0</b>
16	<b>62.3</b>	62.1	60.5	<b>62.1</b>	60.6	<b>62.1</b>	60.3	<b>62.1</b>	60.9	<b>62.1</b>
17	60.4	N/A	N/A	N/A	N/A	N/A	N/A	N/A	N/A	N/A
18	<b>62.8</b>	61.4	<b>61.7</b>	61.4	60.7	<b>61.4</b>	60.5	<b>61.4</b>	<b>61.4</b>	<b>61.4</b>
19	N/A	62.9	62.1	<b>62.9</b>	61.4	<b>62.9</b>	61.4	<b>62.9</b>	62.2	<b>62.9</b>
20	N/A	65.2	64.2	<b>65.2</b>	64.0	<b>65.2</b>	63.9	<b>65.2</b>	64.5	<b>65.2</b>
21	N/A	66.6	65.8	<b>66.6</b>	65.4	<b>66.6</b>	64.4	<b>66.6</b>	65.3	<b>66.6</b>
22	N/A	62.2	60.6	<b>62.2</b>	60.5	<b>62.2</b>	60.6	<b>62.2</b>	60.2	<b>62.2</b>
Total Louder	<b>9</b>	<b>7</b>	<b>6</b>	<b>14</b>	<b>2</b>	<b>18</b>	<b>0</b>	<b>20</b>	<b>3</b>	<b>16</b>

Red = Louder than other quarter

Bold/Red = Louder by 1.0 DB

June 30<sup>th</sup>, 2017

The last day of the 2<sup>nd</sup>  
Quarter





Data reading taken from Airport Authority reader #19 (corner of Valley/Jeffries). #16 (corner of Jeffries/Pepper)

Date	Day of Week	Time	DB Reading HIGH	Arrival / Departure	Flight ID:	Airline	Aircraft Type:	Airports	PCA Point of Closest Approach
<b>6/30/17 (Friday)</b>									
6/30/17	Friday	12:26 AM	65	Arrival	Helicopter	N/A	N/A	N/A	1835
6/30/17	Friday	12:40 AM	70	Departure	Helicopter	N/A	N/A	N/A	2059
6/30/17	Friday	12:56 AM	71	Departure	JLG38	Private	LJ35	BUR - SDL	2236
6/30/17	Friday	5:58 AM	59	Departure	ROM116	Private	PC12	BUR - OAK	3163
6/30/17	Friday	6:46 AM	72	Departure	ASH5991	American	CRJ9	BUR - PHX	2187
6/30/17	Friday	7:08 AM	81	Departure	SKW5241	SkyWest/Alaska	E75L	BUR - DEN	1939
6/30/17	Friday	7:17 AM	85	Departure	SWA459	SouthWest	B737	BUR - DEN	1928
6/30/17	Friday	7:20 AM	83	Departure	N/A	N/A	N/A	BUR - DAL	2026
6/30/17	Friday	7:21 AM	83	Departure	SWA1800	SouthWest	B737	BUR - SJC	1737
6/30/17	Friday	7:22 AM	74	Departure	SKW4672	SkyWest/Alaska	CRJ9	BUR - SLC	2187
6/30/17	Friday	7:26 AM	84	Departure	SWA461	SouthWest	B737	BUR - LAS	1782
6/30/17	Friday	7:29 AM	84	Departure	SWA1717	SouthWest	B737	BUR - SLC	1760
6/30/17	Friday	7:44 AM	78	Departure	SWA2001	SouthWest	B737	BUR - SFO	1807
6/30/17	Friday	7:47 AM	74	Departure	LXJ545	Private	CL30	BUR - VNY	2170
6/30/17	Friday	7:52 AM	86	Departure	UAL743	United	B738	BUR - SFO	1483
6/30/17	Friday	7:59 AM	85	Departure	SWA1955	SouthWest	B737	BUR - OAK	1823
6/30/17	Friday	8:01 AM	81	Departure	SWA484	SouthWest	B737	BUR - SMF	1794
6/30/17	Friday	8:08 AM	84	Departure	SWA2213	SouthWest	B737	BUR - PHX	1745
6/30/17	Friday	8:11 AM	73	Departure	AMF1948	Private	SW4	BUR - BFL	1624
6/30/17	Friday	8:14 AM	83	Departure	SWA258	SouthWest	B737	BUR - SJC	1765
6/30/17	Friday	8:33 AM	70	Departure	AMF1944	Private	SW4	BUR - SBP	1372
6/30/17	Friday	8:37 AM	81	Departure	SKW3457	SkyWest/Alaska	E75L	BUR - PDX	1658
6/30/17	Friday	8:39 AM	81	Departure	SWA473	SouthWest	B737	BUR - OAK	1792
6/30/17	Friday	8:51 AM	79	Departure	SWA3306	SouthWest	B737	BUR - SMF	1948
6/30/17	Friday	9:05 AM	off-line	Departure	N/A	Private	C56X	BUR - TRK	1594
6/30/17	Friday	9:08 AM	84	Departure	N/A	Private	N/A	BUR - KPSO	1778
6/30/17	Friday	9:12 AM	83	Departure	SWA4079	SouthWest	B737	BUR - LAS	2044
6/30/17	Friday	9:19 AM	62	Departure	AMF1938	Private	BE99	BUR - SMX	5067
6/30/17	Friday	9:23 AM	82	Departure	SWA1866	SouthWest	B737	BUR - OAK	1882
6/30/17	Friday	9:27 AM	82	Departure	SWA3812	SouthWest	B737	BUR - PHX	1961
6/30/17	Friday	9:45 AM	76	Departure	JSX102	Jet Suite X	E135	BUR - CCR	1697
6/30/17	Friday	9:47 AM	82	Departure	SKW3346	Alaska	E75L	BUR - SJC	1641
6/30/17	Friday	9:59 AM	71	Departure	AMF1942	Private	SW4	BUR - SBP	1826
6/30/17	Friday	10:05 AM	73	Departure	N/A	Private	AVID	BUR - APC	2181
6/30/17	Friday	10:07 AM	85	Departure	SWA1279	SouthWest	B737	BUR - SJC	1800
6/30/17	Friday	10:13 AM	72	Departure	ROM142	Private	PC12	BUR - KSQL	1523
6/30/17	Friday	10:15 AM	73	Departure	JSX111	Jet Suite X	E135	BUR - LAS	1957

Data reading taken from Airport Authority reader #19 (corner of Valley/Jeffries). #16 (corner of Jeffries/Pepper)

Date	Day of Week	Time	DB Reading HIGH	Arrival / Departure	Flight ID:	Airline	Aircraft Type:	Airports	PCA Point of Closest Approach
6/30/17	Friday	10:26 AM	81	Departure	SWA3589	SouthWest	B737	BUR - DAL	1983
6/30/17	Friday	10:29 AM	70	Departure	N/A	Private	N/A	BUR - OPF	1843
6/30/17	Friday	10:48 AM	67	Departure	N/A	Private	BE35	BUR - SBA	2505
6/30/17	Friday	10:51 AM	82	Departure	SWA1424	SouthWest	B737	BUR - SMF	1766
6/30/17	Friday	10:53 AM	72	Departure	SKW4569	Alaska	CRJ7	BUR - SLC	1843
6/30/17	Friday	10:55 AM	81	Departure	SWA1188	SouthWest	B737	BUR - SFO	1846
6/30/17	Friday	11:05 AM	80	Departure	N/A	Private	N/A	BUR - PDK	1985
6/30/17	Friday	11:12 AM	82	Departure	SWA719	SouthWest	B737	BUR - PHX	1829
6/30/17	Friday	11:13 AM	75	Departure	EJA737P	Private	GALX	BUR - OAK	1730
6/30/17	Friday	11:15 AM	84	Departure	SWA248	SouthWest	B737	BUR - LAS	1797
6/30/17	Friday	11:24 AM	83	Departure	SWA1125	SouthWest	B737	BUR - OAK	1851
6/30/17	Friday	11:30 AM	84	Departure	SWA2153	SouthWest	B737	BUR - DEN	1825
6/30/17	Friday	11:32 AM	81	Departure	SWA1806	SouthWest	B737	BUR - SNA	1937
6/30/17	Friday	11:35 AM	80	Departure	SWA1435	SouthWest	B737	BUR - SNA	1917
6/30/17	Friday	11:41 AM	78	Departure	N/A	Private	C525	BUR - SMX	1696
6/30/17	Friday	11:47 AM	77	Departure	N/A	Private	GLF3	BUR - LAS	1815
6/30/17	Friday	11:50 AM	77	Departure	N/A	N/A	N/A	BUR - SFO	1859
6/30/17	Friday	12:05 PM	69	Departure	SKW5655	SkyWest	CRJ2	BUR - SFO	2109
6/30/17	Friday	12:07 PM	78	Departure	N/A	Private	N/A	BUR - KMCD	2054
6/30/17	Friday	12:09 PM	74	Departure	RSP753	Private	E50P	BUR - SAF	1838
6/30/17	Friday	12:12 PM	80	Departure	SWA1997	SouthWest	B737	BUR - OAK	1850
6/30/17	Friday	12:15 PM	72	Departure	EJM65	Private	LJ40	BUR - STL	1789
6/30/17	Friday	12:18 PM	85	Departure	SWA327	SouthWest	B737	BUR - LAS	1719
6/30/17	Friday	12:25 PM	79	Departure	FEX850	FedEx	CRJ2	BUR - TRM	1838
6/30/17	Friday	12:33 PM	80	Departure	LN351AM	Private	LJ35	BUR - SDL	1809
6/30/17	Friday	12:34 PM	69	Departure	JSX113	Jet Suite X	E135	BUR - LAS	1925
6/30/17	Friday	12:36 PM	85	Departure	ASA639	Alaska	B738	BUR - SEA	2222
6/30/17	Friday	12:45 PM	78	Departure	SWA1442	SouthWest	B737	BUR - LAS	2132
6/30/17	Friday	12:47 PM	87	Departure	UAL760	United	B738	BUR - SFO	1746
6/30/17	Friday	12:49 PM	74	Departure	ASH5955	Mesa Air	CRJ9	BUR - PHX	2012
6/30/17	Friday	12:57 PM	83	Departure	SWA3815	SouthWest	B737	BUR - SJC	1754
6/30/17	Friday	1:00 PM	76	Departure	EJA790	Private	CL35	BUR - OAK	2023
6/30/17	Friday	1:17 PM	79	Departure	N/A	Military?	N/A	N/A	N/A
6/30/17	Friday	1:32 PM	81	Departure	SWA4117	SouthWest	B737	BUR - OAK	1745
6/30/17	Friday	1:45 PM	85	Departure	SWA2222	SouthWest	B737	BUR - SMF	1559
6/30/17	Friday	1:47 PM	85	Departure	SWA3296	SouthWest	B737	BUR - PHX	1659
6/30/17	Friday	1:50 PM	79	Departure	SKW5362	SkyWest	E75L	BUR - SFO	1917
TOTAL # OF FLIGHTS:		74	21	Above 83 dB				Below 1800 feet	27
								Below 1600 feet	5

Above 83 dB

Below 1800 ft

Below 1600 ft

12/18/16

1

6

0

1/22/17

8

7

0

2/26/17

8

6

0

AVERAGE

5.6

6.3

0

6/30/17  
2x as many  
flights

**21**

2.62x more

**27**

4.29x more

**5**





So, did we just "think"  
things got louder?



Date	Time	DB Reading	Arrival / Departure	Flight ID:	Airline	Aircraft Type:	Airports	PCA Point of Closest Approach	Address of PCA
<b>October 2017 - Residents Complaints</b>									
10/1/17	1:26 AM	79	Departure	PRD42	Private	GALX	BUR - VNY	1341	1900 N. Maple St
10/6/17	9:12 PM	65	Departure	N/A	N/A	N/A	BUR - KHND	1673	1900 Evergreen St
10/7/17	11:37 PM	72	Departure	N/A	N/A	GALX	BUR - SDL	1763	1900 N. Kenwood St
10/8/17	6:37 AM	77	Departure	N/A	N/A	N/A	BUR - PHL	1860	1900 N. Pass Ave
10/8/17	6:45 AM	82	Departure	ASH5909	American	CRJ9	BUR - PHX	1696	1900 N. Maple St
10/8/17	10:05 AM	82	Departure	SWA5604	Southwest	B737	BUR - OAK	1560	1900 Evergreen St
10/8/17	10:23 AM	77	Departure	EJA265	NetJets	F2TH	BUR - PGA	1716	1900 N. Pass Ave
10/8/17	10:28 AM	81	Departure	SWA3058	Southwest	B737	BUR - SLC	1988	1900 N. Maple St
10/9/17	7:11 AM	80	Departure	UAL1869	United	A320	BUR - DEN	1599	1900 Evergreen St
10/10/17	8:23 AM	80	Departure	SWA1523	Southwest	B737	BUR - LAS	1672	1900 N. Pass Ave
10/11/17	10:26 PM	81	Departure	SWA1738	Southwest	B737	BUR - SFO	2278	1900 N. Rose St
10/12/17	2:59 PM	79	Departure	SWA1317	Southwest	B737	BUR - OAK	1836	1900 N. Pass Ave
10/12/17	3:00 PM	83	Departure	SWA4970	Southwest	B737	BUR - SMF	1664	1900 N. Pass Ave
10/12/17	3:02 PM	77	Departure	SWA431	Southwest	B737	BUR - SJC	1923	1900 N. Screenland
10/13/17	6:43 AM	73	Departure	AMF1948	Private	SW4	BUR - BFL	1468	1900 N. Maple St
10/13/17	6:46 AM	80	Departure	ASH5909	American	CRJ9	BUR - PHX	1417	1900 N. Maple St
10/13/17	7:38 PM	89	Departure	UPS907	UPS	A306	BUR - SDF	1738	1900 N. Pass Ave
10/13/17	8:59 PM	83	Departure	SWA3965	Southwest	B737	BUR - SMF	1569	1900 N. Maple St
10/13/17	9:00 PM	79	Departure	SWA1876	Southwest	B737	BUR - LAS	1677	1900 N. Kenwood St
10/13/17	9:56 PM	85	Departure	JBU358	JetBlue	A320	BUR - JFK	1533	1900 N. Maple St
10/14/17	7:14 AM	84	Departure	SWA3732	Southwest	B737	BUR - DAL	1626	1900 N. Maple St
10/14/17	7:18 AM	83	Departure	SKW4672	Delta	CRJ9	BUR - SJC	1382	1900 N. Maple St
10/14/17	6:33 PM	81	Departure	SWA5725	Southwest	B737	BUR - OAK	1570	1900 N. Maple St
10/15/17	7:13 AM	86	Departure	UAL1869	United	B738	BUR - DEN	1771	1900 N. Maple St
10/15/17	2:42 PM	83	Departure	SWA2648	Southwest	B737	BUR - DEN	1509	1900 N. Maple St
10/15/17	2:44 PM	78	Departure	SWA5679	Southwest	B737	BUR - LAS	1406	1900 N. Pass Ave
10/18/17	6:38 AM	70	Departure	AMF1948	Private	SW4	BUR - BFL	1285	1900 N. Pass Ave
10/18/17	7:17 AM	81	Departure	SKW4672	Delta	CRJ9	BUR - SLC	1492	1900 N. Maple St
10/18/17	7:19 AM	83	Departure	SWA1740	Southwest	B737	BUR - SMF	1424	1900 N. Pass Ave
10/18/17	9:57 AM	83	Departure	N/A	N/A	N/A	BUR - OAK	1148	1900 N. Maple St
10/19/17	7:02 AM	88	Departure	ASA165	Alaska	B738	BUR - SEA	1339	1900 Evergreen St
10/19/17	7:38 AM	83	Departure	SWA1493	Southwest	B738	BUR - OAK	1620	1900 N. Maple St
10/19/17	4:34 PM	82	Departure	SWA566	Southwest	B737	BUR - OAK	1582	1900 N. Pass Ave
10/20/17	8:25 AM	82	Departure	SWA744	Southwest	B737	BUR - PHX	1877	1900 N. Maple St
10/20/17	8:51 AM	82	Departure	SWA1859	Southwest	B737	BUR - OAK	1652	1900 N. Maple St
10/20/17	9:32 AM	81	Departure	SWA1715	Southwest	B737	BUR - PHX	1472	1900 N. Maple St



Date	Time	DB Reading	Arrivial / Departure	Flight ID:	Airline	Aircraft Type:	Airports	PCA Point of Closest Approach	Address of PCA
10/20/17	10:38 AM	80	Departure	SKW3551	Delta	CRJ7	BUR - SLC	1290	1900 N. Maple St
10/20/17	6:22 PM	82	Departure	SWA4777	Southwest	B737	BUR - SLC	1530	1900 N. Pass Ave
10/20/17	6:57 PM	86	Departure	ASA589	Alaska	B738	BUR - SEA	1568	1900 N. Pass Ave
10/20/17	7:16 PM	86	Departure	FDX1213	FedEx	A306	BUR - MEM	2032	1900 Evergreen St
10/20/17	7:45 PM	91	Departure	UPS907	UPS	A306	BUR - SDF	1543	1900 N. Kenwood St
10/20/17	7:12 PM	83	Departure	SWA1319	Southwest	B737	BUR - SMF	1641	1900 N. Kenwood St
10/21/17	9:06 AM	84	Departure	SWA3828	Southwest	B737	BUR - SMF	1526	1900 N. Rose St
10/21/17	9:07 AM	87	Departure	SWA3741	Southwest	B738	BUR - PHX	1523	1900 N. Rose St
10/21/17	9:09 AM	81	Departure	SKW5655	United	CRJ7	BUR - SFO	1893	1900 N. Screenland
10/21/17	9:11 AM	84	Departure	SWA3785	Southwest	B737	BUR - PDX	1404	1900 N. Pass Ave
10/21/17	9:14 AM	80	Departure	SWA3767	Southwest	B737	BUR - OAK	1552	1900 N. Maple St
10/22/17	12:29 AM	77	Departure	N/A	N/A	N/A	BUR - TEB	1567	1900 N. Kenwood St
10/23/17	10:50 AM	68	Departure	N53W	Private	BE20	BUR - AMTR	1627	1800 N. Lima St
10/24/17	7:01 AM	90	Departure	FDX411	FedEx	A306	BUR - MEM	1746	1900 N. Maple St
10/24/17	7:05 AM	90	Departure	UPS2927	UPS	A306	BUR - RFD	1447	1900 N. Kenwood St
10/24/17	8:58 PM	84	Departure	FDX525	FedEx	A306	BUR - LAX	2101	1900 N. Pepper St
10/24/17	10:24 PM	81	Departure	N95GK	Private	BE40	BUR - KONO	1558	1900 N. Kenwood St
10/25/17	8:52 AM	73	Departure	SWA430	Southwest	B737	BUR - SLC	1504	1900 N. Maple St
10/25/17	9:34 AM	80	Departure	SWA4932	Southwest	B737	BUR - LAS	1668	1900 N. Pass Ave
10/25/17	1:45 PM	82	Departure	SWA1604	Southwest	B737	BUR - DEN	1695	1900 N. Maple St
10/25/17	3:01 PM	77	Departure	N/A	N/A	N/A	BUR - SDL	1479	1900 Evergreen St
10/25/17	3:06 PM	79	Departure	SWA1317	Southwest	B737	BUR - OAK	1455	1900 N. Pass Ave
10/26/17	6:35 AM	73	Departure	N/A	N/A	N/A	BUR - SJC	1496	1900 N. Pass Ave
10/26/17	7:49 AM	85	Departure	SWA1493	Southwest	B738	BUR - OAK	1549	1900 Evergreen St
10/26/17	7:56 AM	81	Departure	SWA1740	Southwest	B737	BUR - SMF	1580	1900 N. Pass Ave
10/26/17	9:52 AM	80	Departure	SWA4932	Southwest	B737	BUR - LAS	1500	1900 N. Maple St
10/27/17	7:18 PM	88	Departure	FDX1213	FedEx	A306	BUR - MEM	1854	1900 N. Pass Ave
10/27/17	9:05 PM	82	Departure	SWA1876	Southwest	B737	BUR - LAS	1469	1900 N. Maple St
10/27/17	9:07 PM	82	Departure	SWA4128	Southwest	B737	BUR - OAK	1758	1900 N. Rose St
10/29/17	12:13 PM	84	Departure	N/A	Private	BE40	BUR - K1K1	1571	1900 N. Kenwood St
10/31/17	4:55 PM	80	Departure	SKW3429	Alaska	E75L	BUR - PDX	1888	1900 N. Pass Ave
10/31/17	5:08 PM	81	Departure	SWA1726	Southwest	B737	BUR - OAK	2031	1900 N. Rose St
10/31/17	5:55 PM	75	Departure	N/A	N/A	N/A	BUR - IAD	1457	1900 N. Pass Ave
10/31/17	7:57 PM	88	Departure	UPS907	UPS	A306	BUR - SDF	1880	1900 N. Pass Ave

Date	Time	DB Reading	Arrival / Departure	Flight ID:	Airline	Aircraft Type:	Airports	PCA Point of Closest Approach	Address of PCA
October 2017									
10/11/17	1:26 AM	79	Departure	PRD42	Private	GALX	BUR - VNY	1341	1900 N. Maple St
10/6/17	9:12 PM	65	Departure	N/A	N/A	N/A	BUR - KHND	1673	1900 N. Maple St
10/7/17	11:37 PM	72	Departure	N/A	N/A	GALX	BUR - SDL	1763	1900 N. Kenwood St
10/8/17	6:37 AM	77	Departure	N/A	N/A	N/A	BUR - PHL	1860	1900 N. Pass Ave
10/8/17	6:45 AM	82	Departure	ASH5909	American	CRJ9	BUR - PHX	1696	1900 N. Maple St
10/8/17	10:05 AM	82	Departure	SWA5604	Southwest	B737	BUR - OAK	1560	1900 N. Maple St
10/8/17	10:23 AM	77	Departure	EJA265	NetJets	F2TH	BUR - PGA	1716	1900 N. Pass Ave
10/8/17	10:28 AM	81	Departure	SWA3058	Southwest	B737	BUR - SLC	1988	1900 N. Maple St
10/9/17	7:11 AM	80	Departure	UAL1869	United	A320	BUR - DEN	1599	1900 N. Maple St
10/10/17	8:23 AM	80	Departure	SWA1523	Southwest	B737	BUR - LAS	1672	1900 N. Pass Ave
10/11/17	10:26 PM	81	Departure	SWA1738	Southwest	B737	BUR - SFO	2278	1900 N. Rose St
10/12/17	2:59 PM	79	Departure	SWA1317	Southwest	B737	BUR - OAK	1836	1900 N. Pass Ave
10/12/17	3:00 PM	83	Departure	SWA4970	Southwest	B737	BUR - SMF	1664	1900 N. Pass Ave
10/12/17	3:02 PM	77	Departure	SWA431	Southwest	B737	BUR - SJC	1923	1900 N. Screenland
10/13/17	6:43 AM	73	Departure	AMF1948	Private	SW4	BUR - BFL	1468	1900 N. Maple St
10/13/17	6:46 AM	80	Departure	ASH5909	American	CRJ9	BUR - PHX	1417	1900 N. Maple St
10/13/17	7:38 PM	89	Departure	UPS907	UPS	A306	BUR - SDF	1738	1900 N. Pass Ave
10/13/17	8:59 PM	83	Departure	SWA3965	Southwest	B737	BUR - SMF	1569	1900 N. Maple St
10/13/17	9:00 PM	79	Departure	SWA1876	Southwest	B737	BUR - LAS	1677	1900 N. Kenwood St
10/13/17	9:56 PM	85	Departure	JBU358	JetBlue	A320	BUR - JFK	1533	1900 N. Maple St
10/14/17	7:14 AM	84	Departure	SWA3732	Southwest	B737	BUR - DAL	1626	1900 N. Maple St
10/14/17	7:18 AM	83	Departure	SKW4672	Delta	CRJ9	BUR - SJC	1382	1900 N. Maple St
10/14/17	6:33 PM	81	Departure	SWA5725	Southwest	B737	BUR - OAK	1570	1900 N. Maple St
10/15/17	7:13 AM	86	Departure	UAL1869	United	B738	BUR - DEN	1771	1900 N. Maple St
10/15/17	2:42 PM	83	Departure	SWA2648	Southwest	B737	BUR - DEN	1509	1900 N. Maple St
10/15/17	2:44 PM	78	Departure	SWA5679	Southwest	B737	BUR - LAS	1406	1900 N. Pass Ave
10/18/17	6:38 AM	70	Departure	AMF1948	Private	SW4	BUR - BFL	1285	1900 N. Pass Ave
10/18/17	7:17 AM	81	Departure	SKW4672	Delta	CRJ9	BUR - SLC	1492	1900 N. Maple St
10/18/17	7:19 AM	83	Departure	SWA1740	Southwest	B737	BUR - SMF	1424	1900 N. Pass Ave
10/18/17	9:57 AM	83	Departure	N/A	N/A	N/A	BUR - OAK	1148	1900 N. Maple St
10/19/17	7:02 AM	88	Departure	ASA165	Alaska	B738	BUR - SEA	1339	1900 N. Maple St
10/19/17	7:38 AM	83	Departure	SWA1493	Southwest	B738	BUR - OAK	1620	1900 N. Maple St
10/19/17	4:34 PM	82	Departure	SWA566	Southwest	B737	BUR - OAK	1582	1900 N. Pass Ave
10/20/17	8:25 AM	82	Departure	SWA744	Southwest	B737	BUR - PHX	1877	1900 N. Maple St
10/20/17	8:51 AM	82	Departure	SWA1859	Southwest	B737	BUR - OAK	1652	1900 N. Maple St
10/20/17	9:32 AM	81	Departure	SWA1715	Southwest	B737	BUR - PHX	1472	1900 N. Maple St

Date	Time	DB Reading	Arrival / Departure	Flight ID:	Airline	Aircraft Type:	Airports	PCA Point of Closest Approach	Address of PCA
10/20/17	10:38 AM	80	Departure	SKW3551	Delta	CRJ7	BUR - SLC	1290	1900 N. Maple St
10/20/17	6:22 PM	82	Departure	SWA4777	Southwest	B737	BUR - SLC	1530	1900 N. Pass Ave
10/20/17	6:57 PM	86	Departure	ASA589	Alaska	B738	BUR - SEA	1568	1900 N. Pass Ave
10/20/17	7:16 PM	86	Departure	FDX1213	FedEx	A306	BUR - MEM	2032	1900 N. Kenwood St
10/20/17	7:45 PM	91	Departure	UPS907	UPS	A306	BUR - SDF	1543	1900 N. Kenwood St
10/20/17	7:12 PM	83	Departure	SWA1319	Southwest	B737	BUR - SMF	1641	1900 N. Kenwood St
10/21/17	9:06 AM	84	Departure	SWA3828	Southwest	B737	BUR - SMF	1526	1900 N. Rose St
10/21/17	9:07 AM	87	Departure	SWA3741	Southwest	B738	BUR - PHX	1523	1900 N. Rose St
10/21/17	9:09 AM	81	Departure	SKW5655	United	CRJ7	BUR - SFO	1893	1900 N. Screenland
10/21/17	9:11 AM	84	Departure	SWA3785	Southwest	B737	BUR - PDX	1404	1900 N. Pass Ave
10/21/17	9:14 AM	80	Departure	SWA3767	Southwest	B737	BUR - OAK	1552	1900 N. Maple St
10/22/17	12:29 AM	77	Departure	N/A	N/A	N/A	BUR - TEB	1567	1900 N. Kenwood St
10/23/17	10:50 AM	68	Departure	N53W	Private	BE20	BUR - AMTR	1627	1800 N. Lima St
10/24/17	7:01 AM	90	Departure	FDX411	FedEx	A306	BUR - MEM	1746	1900 N. Maple St
10/24/17	7:05 AM	90	Departure	UPS2927	UPS	A306	BUR - RFD	1447	1900 N. Kenwood St
10/24/17	8:58 PM	84	Departure	FDX525	FedEx	A306	BUR - LAX	2101	1900 N. Pepper St
10/24/17	10:24 PM	81	Departure	N95GK	Private	BE40	BUR - KONO	1558	1900 N. Kenwood St
10/25/17	8:52 AM	73	Departure	SWA430	Southwest	B737	BUR - SLC	1504	1900 N. Maple St
10/25/17	9:34 AM	80	Departure	SWA4932	Southwest	B737	BUR - LAS	1668	1900 N. Pass Ave
10/25/17	1:45 PM	82	Departure	SWA1604	Southwest	B737	BUR - DEN	1695	1900 N. Maple St
10/25/17	3:01 PM	77	Departure	N/A	N/A	N/A	BUR - SDL	1479	1900 N. Kenwood St
10/25/17	3:06 PM	79	Departure	SWA1317	Southwest	B737	BUR - OAK	1455	1900 N. Pass Ave
10/26/17	6:35 AM	73	Departure	N/A	N/A	N/A	BUR - SJC	1496	1900 N. Pass Ave
10/26/17	7:49 AM	85	Departure	SWA1493	Southwest	B738	BUR - OAK	1549	1900 N. Kenwood St
10/26/17	7:56 AM	81	Departure	SWA1740	Southwest	B737	BUR - SMF	1580	1900 N. Pass Ave
10/26/17	9:52 AM	80	Departure	SWA4932	Southwest	B737	BUR - LAS	1500	1900 N. Maple St
10/27/17	7:18 PM	88	Departure	FDX1213	FedEx	A306	BUR - MEM	1854	1900 N. Pass Ave
10/27/17	9:05 PM	82	Departure	SWA1876	Southwest	B737	BUR - LAS	1469	1900 N. Maple St
10/27/17	9:07 PM	82	Departure	SWA4128	Southwest	B737	BUR - OAK	1758	1900 N. Rose St
10/29/17	12:13 PM	84	Departure	N/A	Private	BE40	BUR - K1K1	1571	1900 N. Kenwood St
10/31/17	4:55 PM	80	Departure	SKW3429	Alaska	E75L	BUR - PDX	1888	1900 N. Pass Ave
10/31/17	5:08 PM	81	Departure	SWA1726	Southwest	B737	BUR - OAK	2031	1900 N. Rose St
10/31/17	5:55 PM	75	Departure	N/A	N/A	N/A	BUR - IAD	1457	1900 N. Pass Ave
10/31/17	7:57 PM	88	Departure	UPS907	UPS	A306	BUR - SDF	1880	1900 N. Pass Ave

TOTAL REPORTS = 70

Above 83 dB = 26

Below 1800 feet = 57

That's 81%

1799 - 1600 = 18

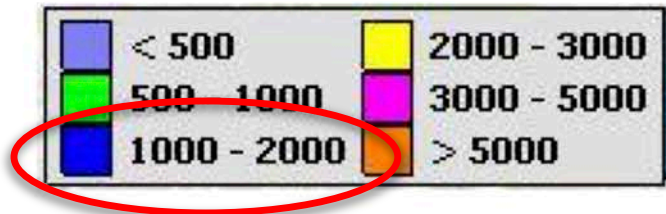
Below 1600 = 39



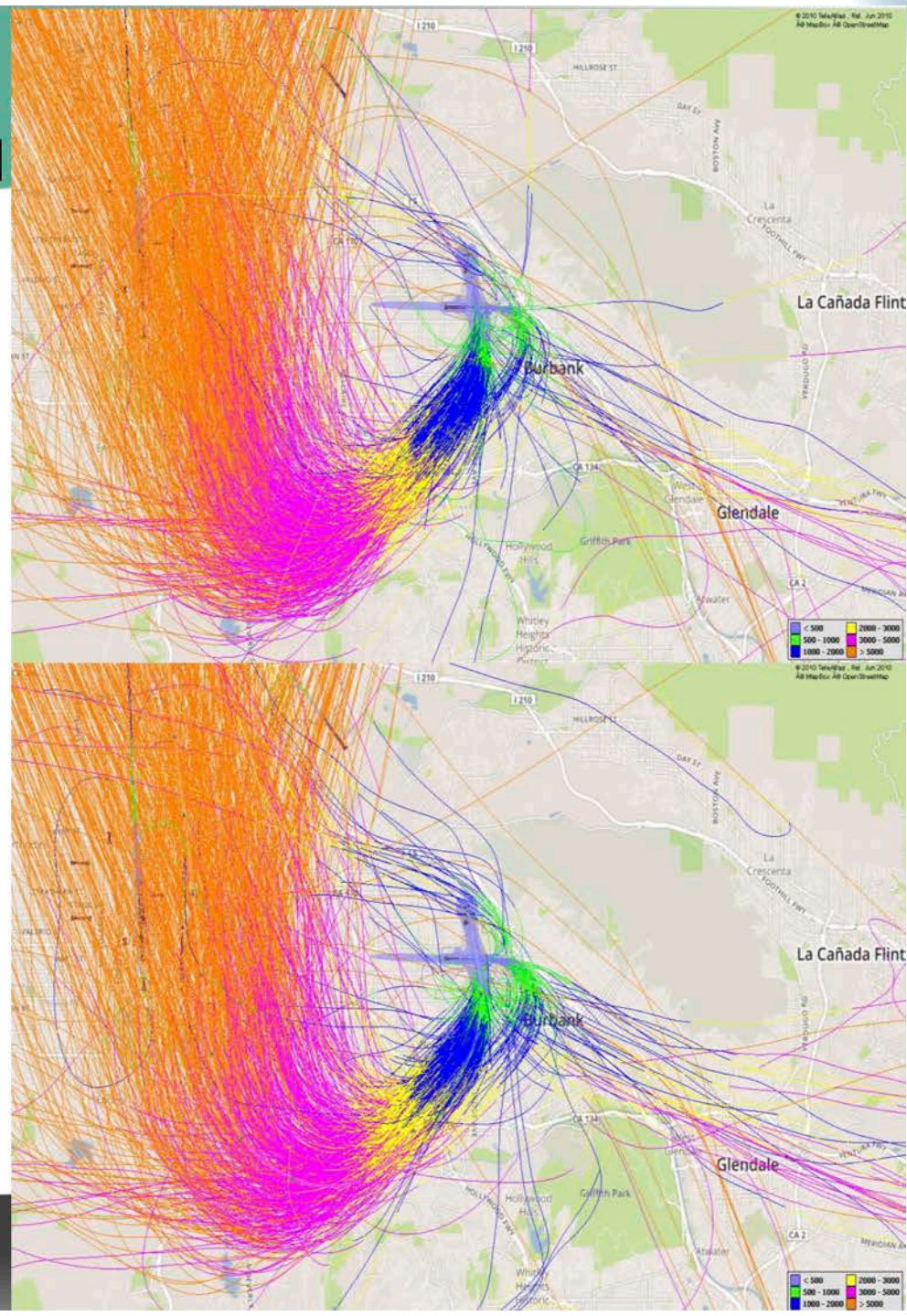


# Departure altitude comparison, same week in August 2016 and 2017

August 6-12, 2017  
828 Departures



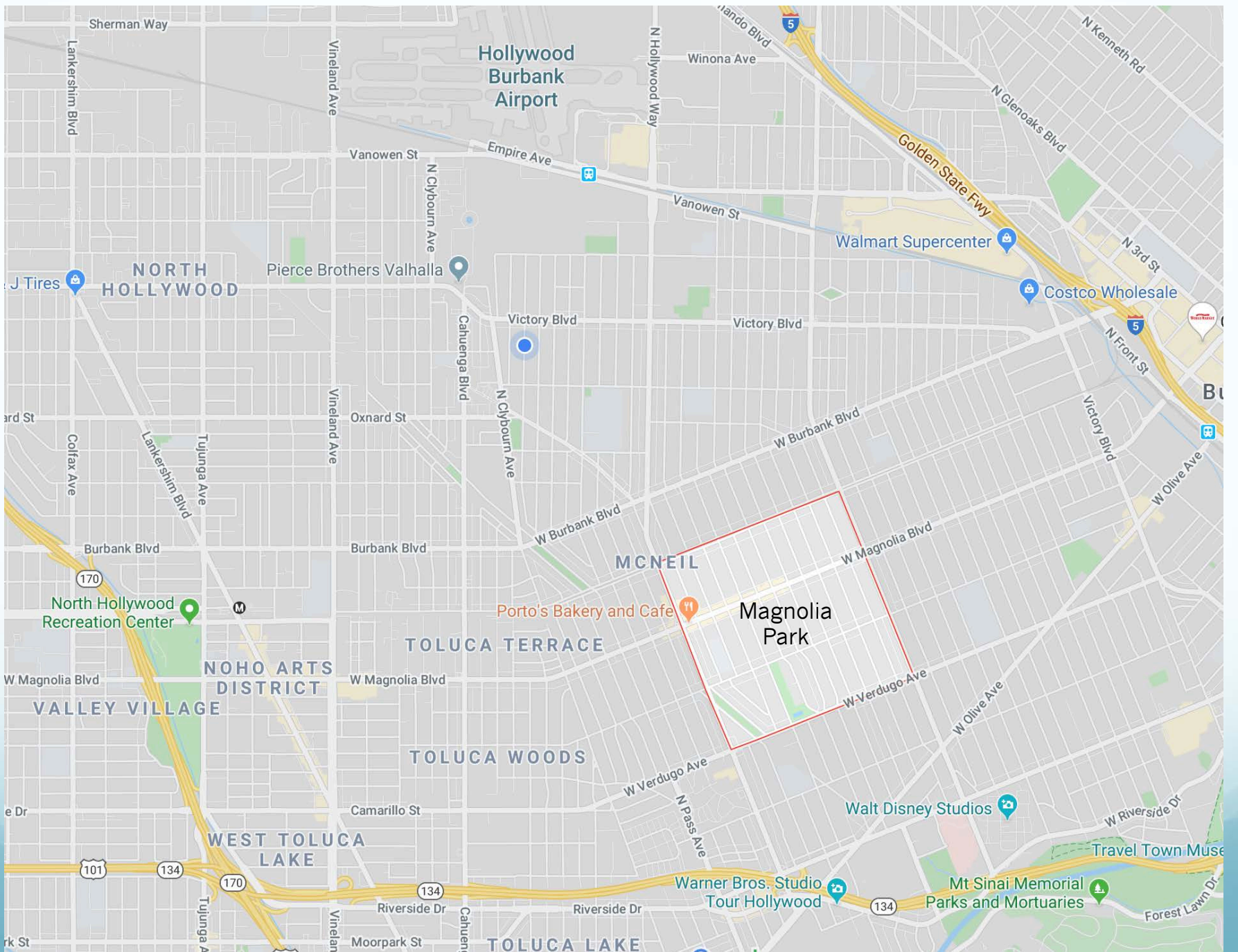
August 7-13, 2016  
766 Departures



**Magnolia Park**

**A New Community**





**“I’ve never had airplanes fly over  
my home before”**

- Magnolia Park Resident



**“So I’m not crazy, something has  
changed!”**

- Magnolia Park Resident



**“Something changed starting  
in the Spring of 2017”**

- Magnolia Park Resident



# Nighttime Noise Violations



According to WebMD, lack of sleep can have serious health side effects





# Sleepiness Causes more Accidents

- 100,000 car accidents and 1,550 crash related deaths each year.
- Increase in work related injuries due to lack of sleep.





# Sleepiness Makes you Foggy-Headed

- Lack of sleep impairs attention, alertness, concentration, reasoning, and problem solving.



# Sleepiness Can Lead to Serious Health Problems

- Heart Disease
  - Heart Attack
  - Heart Failure
- High Blood Pressure
  - Stroke
  - Diabetes



# Sleepiness is Depressing

- Over time, lack of sleep can contribute to depression.



# November 2019

## Burbank Airport Complaints

---

95,269 noise complaints were logged in November.

Of that, **6,753** received during the hours of 10pm – 7am





# November 2019

Of the **6,753** after-hour noise complaints received, how many fines or citations were issued?

**ZERO**



How does Burbank compare to other airports in the area?



## › ACCESS & NOISE

John Wayne Airport has one of the most stringent aircraft access and noise monitoring programs in the United States and, perhaps, the world. Commercial Air Carrier operations at John Wayne Airport are regulated by the Phase 2 Commercial Airline Access Plan and Regulation ([Access Plan](#)). The Access Plan places restrictions on operational capacity, hours of operations, and noise levels at the County's ten (10) noise monitoring stations. General Aviation operations are permitted 24 hours daily subject to compliance with the daytime noise limits and the more restrictive curfew noise limits, as documented in the General Aviation Noise Ordinance ([GANO](#)).



JOHN WAYNE AIRPORT  
ORANGE COUNTY

VS

 **Hollywood Burbank** Airport



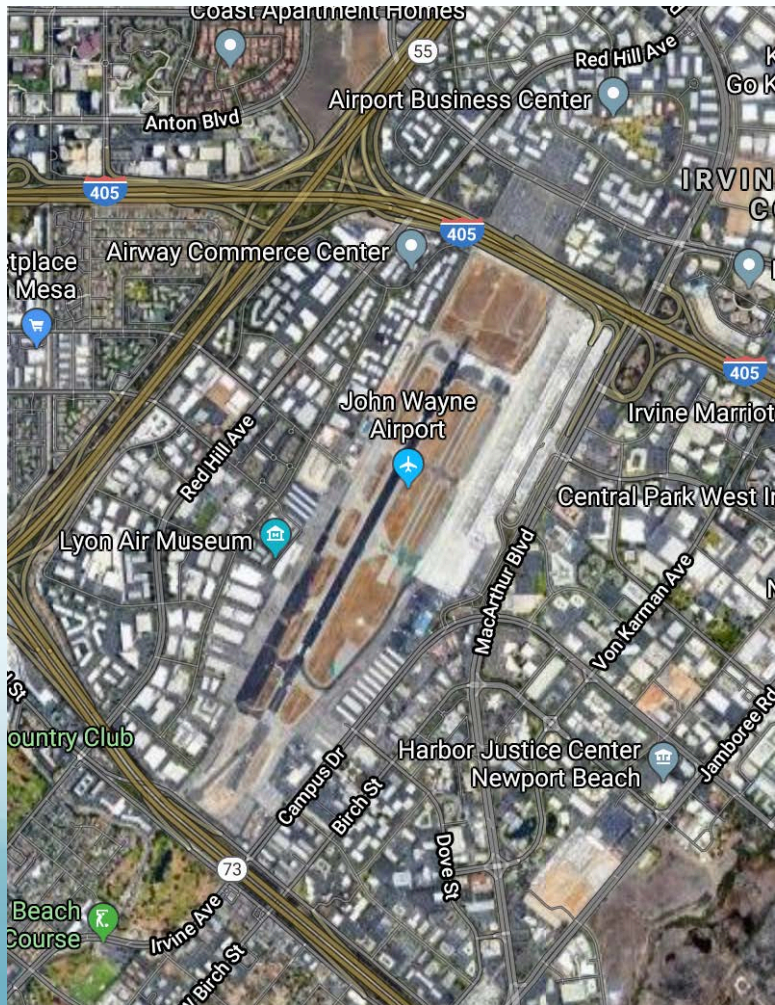


# Location

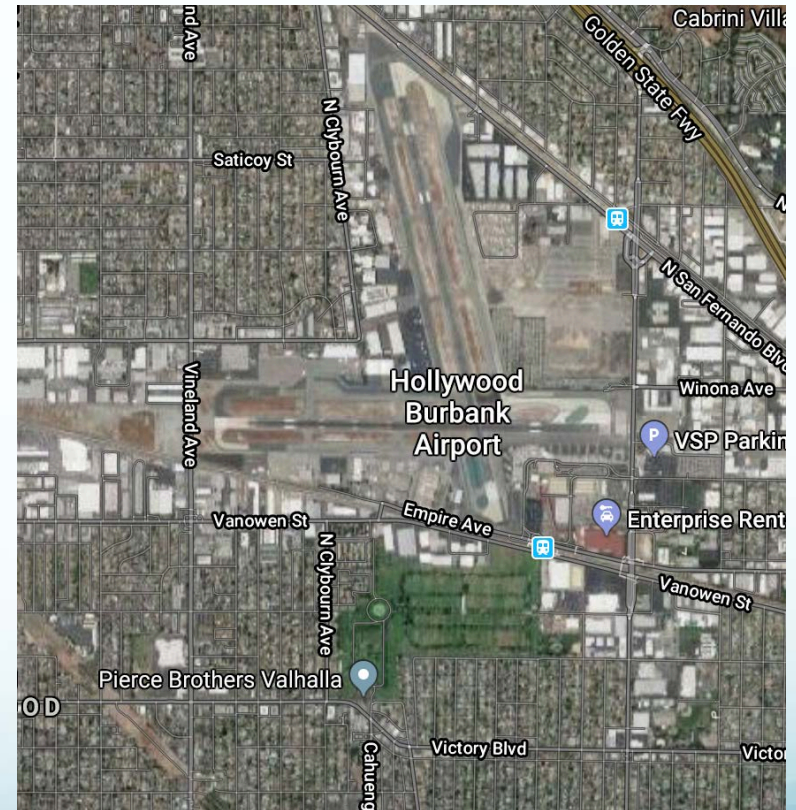


# JOHN WAYNE AIRPORT

ORANGE COUNTY



# Hollywood Burbank Airport



# Hours of Operation



JOHN WAYNE AIRPORT  
ORANGE COUNTY

24 Hours

 Hollywood Burbank Airport

24 Hours





# Voluntary Curfew Hours



**JOHN WAYNE AIRPORT**  
ORANGE COUNTY

 **Hollywood Burbank Airport**

Mon – Sat: 10pm – 7am

Sun: 10pm – 8am

Mon – Sun: 10pm – 7am



# Latest scheduled departure time allowed for Commercial Airlines



JOHN WAYNE AIRPORT  
ORANGE COUNTY



Hollywood Burbank Airport

9:45pm

10pm





What happens if a  
Commercial Airline  
needs to depart after  
10pm?



The Air Carrier needs to request, in writing, permission to depart after 10pm. Once approved, the airline must depart **BEFORE** 10:30pm.

Nothing

What happens if an  
airline violates the after-  
hour rules?



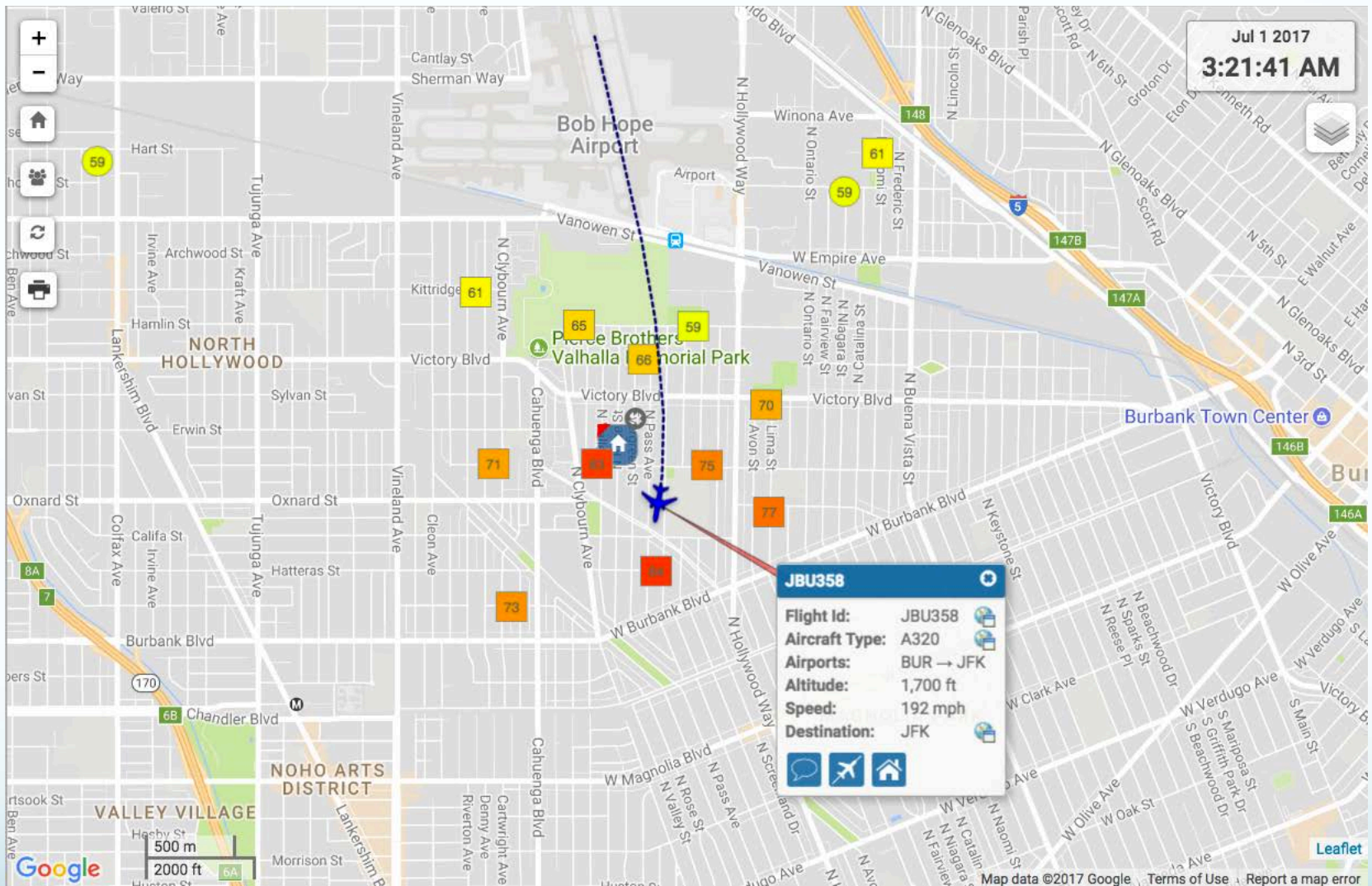
**Air Carriers will be fined and ultimately disqualified from operating at the airport if they continue to violate after-hour rules**

"violation of the noise or operating limitations of this Section shall be cause for termination of the passenger airline lease or operating agreement by the County of Orange against such operator and shall be subject to the penalties and/or fines set forth in Section 8 of the Phase 2 Commercial Airline Access Plan and Regulation."

Nothing







Currently no protection from flights like this!



What noise guidelines  
are in place for  
Commercial Airlines?



Each Commercial Airline has to meet or be **BELOW** a quarterly noise average.

TABLE 6  
MEASURED AVERAGE SINGLE EVENT NOISE EXPOSURE LEVELS  
Commercial Class A  
January - March 2019

Carrier	AC Type	# Dpts	NMS Site											
			15	25	35	45	55	65	75	8N	9N	10N		
Alaska Air	A320	607 Average	95.7	94.9	94.5	88.1	86.8	87.3	84.7	90.4	79.7	82.2		
		Count	(346)	(336)	(360)	(257)	(236)	(253)	(254)	(20)	(1)	(4)		
	B737	33 Average	95.3	94.8	94.1	89.0	89.2	89.3	84.8	91.8	8N/A	8N/A		
American	B738	477 Average	96.8	96.4	95.3	89.2	89.4	89.8	86.8	92.8	84.3	81.8		
		Count	(801)	(779)	(817)	(417)	(429)	(396)	(426)	(415)	(46)	(1)	(11)	
	A321	15 Average	98.3	98.3	94.4	8N/A	87.7	88.3	86.4	8N/A	8N/A	8N/A		
Compass	B738	1332 Average	99.6	97.7	97.3	89.6	89.8	90.1	87.8	93.5	85.9	83.4		
		Count	(1155)	(1138)	(1202)	(1395)	(1349)	(1387)	(1394)	(76)	(25)	(13)		
	B175	333 Average	95.8	95.0	96.1	89.7	89.4	89.5	85.5	92.5	81.6	83.7		
Delta	A319	238 Average	96.4	95.4	95.2	88.4	88.4	88.4	84.6	93.1	86.9	82.4		
		Count	(174)	(163)	(180)	(178)	(170)	(173)	(172)	(47)	(24)	(7)		
	B737	86 Average	93.2	93.2	89.8	81.1	80.9	82.2	79.8	86.5	8N/A	8N/A		
FedEx	B738	4 Average	96.0	95.4	92.8	86.8	87.2	88.4	84.6	88.4	8N/A	8N/A		
		Count	(3)	(3)	(3)	(3)	(3)	(3)	(3)	(3)	(3)	(3)		
	B752	333 Average	96.4	95.8	96.0	88.9	88.4	88.4	84.8	93.3	86.1	83.6		
Frontier Airlines	A320	63 Average	97.3	96.9	94.8	88.9	88.9	89.5	86.3	92.7	80.2	8N/A		
		Count	(54)	(60)	(58)	(80)	(58)	(80)	(80)	(3)	(1)	(3)		
	A319	49 Average	94.6	93.8	93.1	87.2	86.8	87.7	85.1	91.8	8N/A	81.4		
Horizon Air	B38M	17 Average	91.9	91.9	89.0	83.8	85.2	84.8	82.8	89.1	8N/A	8N/A		
		Count	(137)	(135)	(142)	(107)	(107)	(104)	(101)	(34)	(7)	(2)		
	B737	1009 Average	93.0	92.5	90.7	85.4	86.1	86.2	84.4	92.4	83.3	81.3		
United	A320	408 Average	94.6	93.9	92.9	86.8	86.5	88.0	85.7	91.3	86.5	80.1		
		Count	(187)	(165)	(142)	(107)	(107)	(104)	(101)	(34)	(7)	(2)		
	B737	287 Average	91.0	90.5	90.4	86.1	86.1	86.1	84.9	92.9	84.2	80.2		
UPS	B738	777 Average	98.5	97.0	96.5	89.9	90.3	90.7	87.3	93.6	86.7	83.9		
		Count	(663)	(626)	(680)	(975)	(945)	(975)	(944)	(78)	(22)	(18)		
	B752	53 Average	95.8	95.5	94.0	86.8	86.9	87.3	82.7	87.8	8N/A	8N/A		
Westjet	B738	73 Average	94.4	93.1	93.8	87.8	87.4	87.5	82.8	8N/A	8N/A	8N/A		
		Count	(8)	(8)	(8)	(8)	(8)	(8)	(8)	(8)	(8)	(8)		
	B737	73 Average	95.9	94.7	95.2	89.8	90.0	90.5	85.9	91.0	77.3	8N/A		
		Count	(85)	(81)	(85)	(94)	(91)	(94)	(83)	(9)	(1)	(1)		

Nothing



What noise guidelines  
are in place for General  
Aviation (Private) after-  
hour flights?

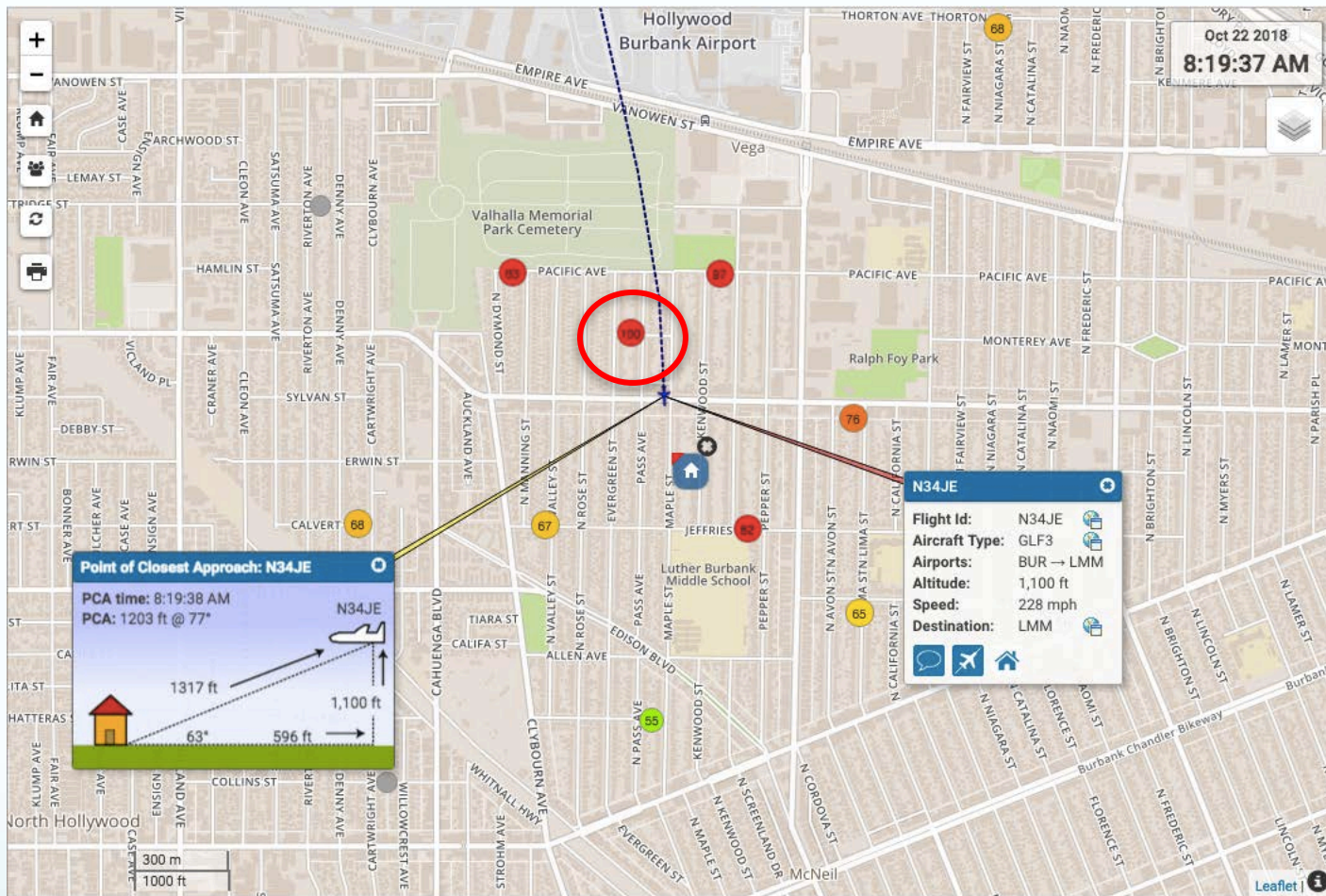




Aircraft not permitted to fly if they exceed the following SENEL values:

NMS 1S: 87.5 dB  
NMS 2S: 87.6 dB  
NMS 3S: 86.7 dB  
NMS 4S: 86.7 dB  
NMS 5S: 86.7 dB  
NMS 6S: 86.7 dB  
NMS 7S: 86.7 dB  
NMS 8N: 86.9 dB  
NMS 9N: 86.9 dB  
NMS 10N: 86.9 dB

Fines by weight. If an aircraft is **ABOVE** weight, a fine will be issued.

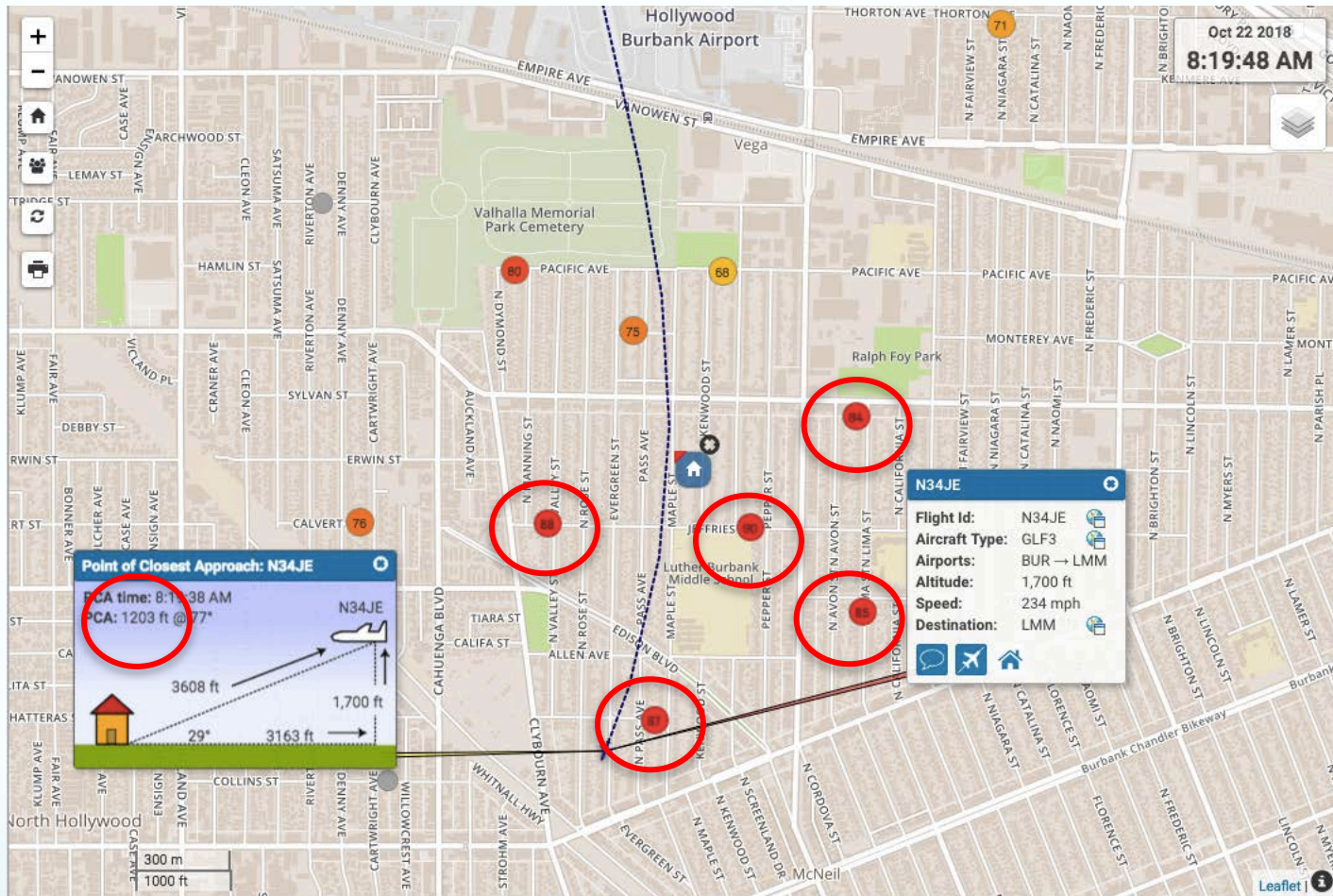


Underweight Private Aircraft

100 dB







Underweight Private Aircraft

84-90 dB



What happens if a  
General Aviation  
(Private) flight violates  
these rules?





## **Citation with a fine**

"A Notice of Noise Violation shall include a citation of the section violated, the noise readings at John Wayne Airport noise monitoring stations, the time and date of the violation, the type and registration number of the aircraft, the name of the aircraft owner, and/or the aircraft operator, if known, and any other pertinent information."

Pilots contacted and weight logs checked to see if flight is over weight restriction.

How many General  
(Private) Aviation fines  
were issued in 2019?



**January - June 2019:**

1st Time Violations: **65**

2nd Time Violations: **7**

3rd Time Violations: **3**

**None**

**Regarding 6,753 November 2019  
complaints:**

“According to our records there were no fines issued, however, one operator using an aircraft (Gulfstream III) that is weight restricted did operate 3 times during the nighttime hours and an investigation into each was conducted. The pilot was able to provide his weight & balance information for each operation and the aircraft was under the weight limit in each instance so no fines were issued.”



What happens after a  
3<sup>rd</sup> violation is issued?



**Aircraft are banned from the airport after the 3rd violation for 3 years**

"In the event that any aircraft owner or operator has three (3) or more violations of Section 2-1-30.4 or 2-1-30.5 of this article within any three-year period, then for a period of three (3) years after the date of the third, or most recent, violation, such aircraft owner and/or operator shall be denied the right to arrive at or depart from John Wayne Airport"

**Nothing**





How many Commercial  
Aviation fines were  
issued in 2019?



**21 Fines Issued  
January - October 2019**

January: 1 (Jet Suite X)  
February: 2 (Jet Suite X)  
March: 1 (Delta)  
April: 1 (Alaska)  
May: 4 (Alaska, Jet Suite X,  
United)  
June: 2 (American, Alaska)  
July: 2 (United, Alaska)  
August: 6 (Jet Suite X, United)  
September: 1 (Delta)  
October: 1 (United)

**None**

# Passenger counts continue to skyrocket each month at the Burbank Airport!

## Hollywood Burbank Airport reports continued increase in passenger numbers

Passenger activity at Hollywood Burbank Airport has yet to slow even after a busy holiday season.

March 19, 2019

## Passenger numbers continue to rise at Hollywood Burbank Airport

Hollywood Burbank Airport saw a 10.6% increase in passengers compared to the year before.

Oct. 4, 2019

## February passenger numbers at Hollywood Burbank Airport come in flat

February tends to be the slowest month of the year at Hollywood Burbank Airport and this past February was no exception.

April 16, 2019

## Hollywood Burbank Airport closes out 2018 with highest passenger count since recession

Passenger numbers at Hollywood Burbank Airport broke the five-million-passenger mark at the end of 2018, the highest the count has been since the recession a decade ago.

## Passenger numbers remain positive in October

Hollywood Burbank Airport reported a 10.6% increase in passenger numbers during April compared to the same month last year.

June 6, 2019

## Passenger numbers remain positive in October

## Hollywood Burbank Airport tallies another month of passenger growth

Hollywood Burbank Airport had a 20.6% increase in passengers for the month of September compared to the same month in 2018.

Nov. 5, 2019

## Passenger numbers remain positive in October

Hollywood Burbank Airport saw an 18.7% increase in October compared to last year.

Dec. 20, 2019



# HOLLYWOOD BURBANK AIRPORT FLIGHT & PASSENGER ACTIVITY

Year	Air Carrier Operations	Total Operations	Revenue Passengers	Rev Passengers % of Change
2023				
2022				
2021				
2020				
2019				
2018	56,828	132,023	5,263,972	11.07%
2017	53,958	131,661	4,739,466	14.40%
2016	49,534	132,407	4,142,943	5.1%
2015	46,703	127,987	3,943,629	2.1%
2014	46,160	118,543	3,861,179	0.4%
2013	48,968	130,560	3,844,390	-5.2%
2012	52,352	135,138	4,056,416	-5.7%
2011	54,253	122,908	4,301,568	-3.6%
2010	62,187	112,658	4,461,271	-2.8%
2009	65,502	109,420	4,588,443	-13.9%
2008	70,682	119,685	5,331,404	-10.0%
2007	71,949	123,521	5,921,336	4.1%
2006	68,642	131,214	5,689,291	3.2%
2005	65,541	135,630	5,512,619	12.1%
2004	56,261	165,131	4,916,800	4.0%
2003	58,854	178,079	4,729,936	2.4%
2002	56,794	162,211	4,620,683	3.0%
2001	56,391	159,705	4,487,335	-5.5%
2000	57,612	160,769	4,748,742	0.3%
1999	62,095	174,984	4,736,293	0.1%
1998	63,881	181,675	4,731,656	0.3%
1997	58,418	179,860	4,717,688	-2.5%
1996	59,156	184,803	4,838,483	-2.7%
1995	63,289	184,543	4,972,575	2.8%
1994	57,268	189,208	4,838,239	11.3%
1993	53,595	207,325	4,348,748	13.6%
1992	50,285	209,938	3,828,307	3.1%
1991	56,660	224,033	3,711,975	6.0%
1990	53,044	238,606	3,503,290	28.9%

# HOLLYWOOD BURBANK AIRPORT FLIGHT & PASSENGER ACTIVITY

Year	Air Carrier Operations	Total Operations	Revenue Passengers	Rev Passengers % of Change
1989	43,828	248,158	2,717,626	-10.7%
1988	48,413	219,843	3,043,179	-3.9%
1987	54,997	240,668	3,167,190	4.8%
1986	50,827	233,241	3,020,893	3.6%
1985	48,637	246,830	2,917,078	6.3%
1984	46,009	246,329	2,744,634	-3.6%
1983	40,085	207,762	2,847,463	17.1%
1982	28,304	174,497	2,431,938	27.9%
1981	23,330	193,165	1,901,295	-0.8%
1980	28,332	209,349	1,917,224	-19.7%
1979	33,356	258,729	2,386,243	6.0%
1978	34,395	293,810	2,251,310	12.6%
1977	32,078	258,311	1,998,952	16.5%
1976	29,472	243,150	1,716,270	5.2%
1975	29,678	229,269	1,631,083	-0.8%
1974	28,922	214,074	1,643,454	4.6%
1973	28,726	209,666	1,571,318	6.5%
1972	30,127	230,771	1,475,336	8.3%
1971	29,819	223,489	1,361,907	3.3%
1970	27,177	225,936	1,318,805	11.9%
1969	32,984	249,255	1,178,281	63.3%
1968	20,125	272,093	721,756	48.4%
1967	13,560	237,454	486,317	31.0%
1966	14,608	205,607	371,335	11.0%
1965	19,455	166,378	334,616	-9.9%
1964	23,996	143,901	371,234	-11.5%
1963	25,487	144,733	419,694	-27.8%
1962	25,446	150,257	581,063	-3.9%
1961	28,545	152,401	604,768	2.6%
1960	30,105	161,453	589,285	-7.1%
1959	33,533	180,965	634,162	5.5%
1958	32,088	208,340	601,308	5.5%
1957	32,947	181,872	569,771	-12.1%
1956	36,510	153,681	648,088	N/A

# Marketing Campaigns Are Paying Off!!



NEWS

## Marketing campaigns for Hollywood Burbank Airport boost passenger counts, ad exec says

For the past three years, it has been Hollywood Burbank Airport's goal to raise awareness of the airfield's existence to travelers outside Southern California to increase its passenger numbers.

May 8, 2018





# Marketing Campaigns Are Paying Off!!



Hollywood Burbank Airport - BUR is 🎉 celebrating success.

January 8 at 12:17 PM · 🌐

We are happy to announce that BUR has been ranked #3 on [TripIt's](#) Top Alternate Airport List for 2019!

<https://www.tripit.com/web/happy-travelers...>

## Top Alternate Airport Rankings

As Compared to Respective Major Metro Airport



★ Major Airport



# **We Need Immediate Action To Be Taken!**

## **1. Aircraft to Take Off at Higher Altitudes**

- FAA to institute an altitude gate at Jeffries of 1800 feet.

## **2. Aircraft to Turn Sooner After Take-off**

- Getting airplanes out of Magnolia Park and surrounding neighborhoods

## **3. We need stronger after-hour noise rules**

- Burbank should be a leader in this fight!



Thank you for you time!





# BURBANK

*for Quiet Skies*

*Follow us*

 Burbank for Quiet Skies Group

 @BURQuietSkies

[www.burbankforquietskies.com](http://www.burbankforquietskies.com)