



# **LAX SPECIFIC PLAN AVIATION ACTIVITY ANALYSIS REPORT CY 2023**

**Prepared June 2024**

**Los Angeles International Airport (LAX)  
Specific Plan Compliance Review  
Aviation Activity Analysis  
January - December 2023**

**A. Purpose of this Report**

Per Appendix A, Subsection 1(b) of the Los Angeles International Airport (LAX) Specific Plan,<sup>[1]</sup> Los Angeles World Airports (LAWA) is required to prepare and submit an annual Aviation Activity Analysis Report to the Board of Airport Commissioners, Los Angeles City Planning, the Los Angeles Department of Transportation, and the Los Angeles City Council. The purpose of this report is: 1) to provide an analysis that identifies the current number of passengers, volume of air cargo, and aircraft operations served at LAX; and 2) to compile aviation activity statistics for other airports in the Los Angeles region for monitoring and reporting purposes. This Aviation Activity Analysis Report has been updated for the calendar year 2023.

**B. Summary and Conclusions**

The COVID-19 pandemic severely impacted the aviation and travel industry with 2023 showing continuing signs of recovery. Below is an overview of this report's analysis of LAX and regional air traffic for January through December of that calendar year:

- Preliminary data reported by individual airports indicates that LAX is the eight busiest airport in the world by passenger volume and the fourth busiest in the United States.
- Passenger volume at LAX totaled approximately 75.05 million annual passengers (MAP) in 2023, a 13.70% increase compared to the previous year.
- Load factor for *departures* from LAX was 86.36% for domestic flights and 82.21% for international flights. This represents a decrease in load factor of 0.32% for domestic flights and an increase of 4.05% for international flights when compared to 2022.
- Load factor for *arrivals* at LAX was 85.74% for domestic flights and 82.41% for international flights. This represents a decrease in load factor of 0.36% for domestic flights and an increase of 5.18% for international flights when compared to 2022.
- Cargo volume at LAX totaled approximately 2.37 million tons in 2023, a 14.46% decrease from 2022.
- Commercial aircraft operations (landings and takeoffs) at LAX increased by 3.27% in 2023 to 575,097. This is up from 556,913 operations in 2022.
- LAX handled approximately 70.61% of passenger traffic among the seven commercial passenger Southern California Association of Governments (SCAG) region airports in 2023, a 1.31% increase from 2022.

---

<sup>[1]</sup> City of Los Angeles, Department of City Planning, LAX Specific Plan, adopted January 20, 2005, last amended September 8, 2017.

**C. LAX Global and National Ranking**

**Table 1. Top 10 World Airports Ranked by Passenger Volume**  
(preliminary rankings as reported by individual airports, April 2024)

Global Rank	U.S. Rank	Airport	Location	Total Passengers
1	1	Hartsfield–Jackson Atlanta International	Atlanta, Georgia, U.S.A.	104,653,451
2		Dubai International	Dubai, U.A.E.	86,994,365
3	2	Dallas Fort Worth International	Dallas-Fort Worth, Texas, U.S.A.	81,755,538
4		Heathrow Airport	London, U.K.	79,183,364
5		Tokyo Haneda Airport	Tokyo, Japan	78,719,302
6	3	Denver International	Denver, Colorado, U.S.A	77,837,917
7		Istanbul Airport	Istanbul, Türkiye	76,027,321
<b>8</b>	<b>4</b>	<b>Los Angeles International</b>	<b>Los Angeles, California, U.S.A.</b>	<b>75,050,875</b>
9	5	Chicago O’Hare International	Chicago, Illinois, U.S.A.	73,894,226
10		Indira Gandhi International	New Delhi, India	72,214,841

Data Source: Airports Council International (ACI) – World

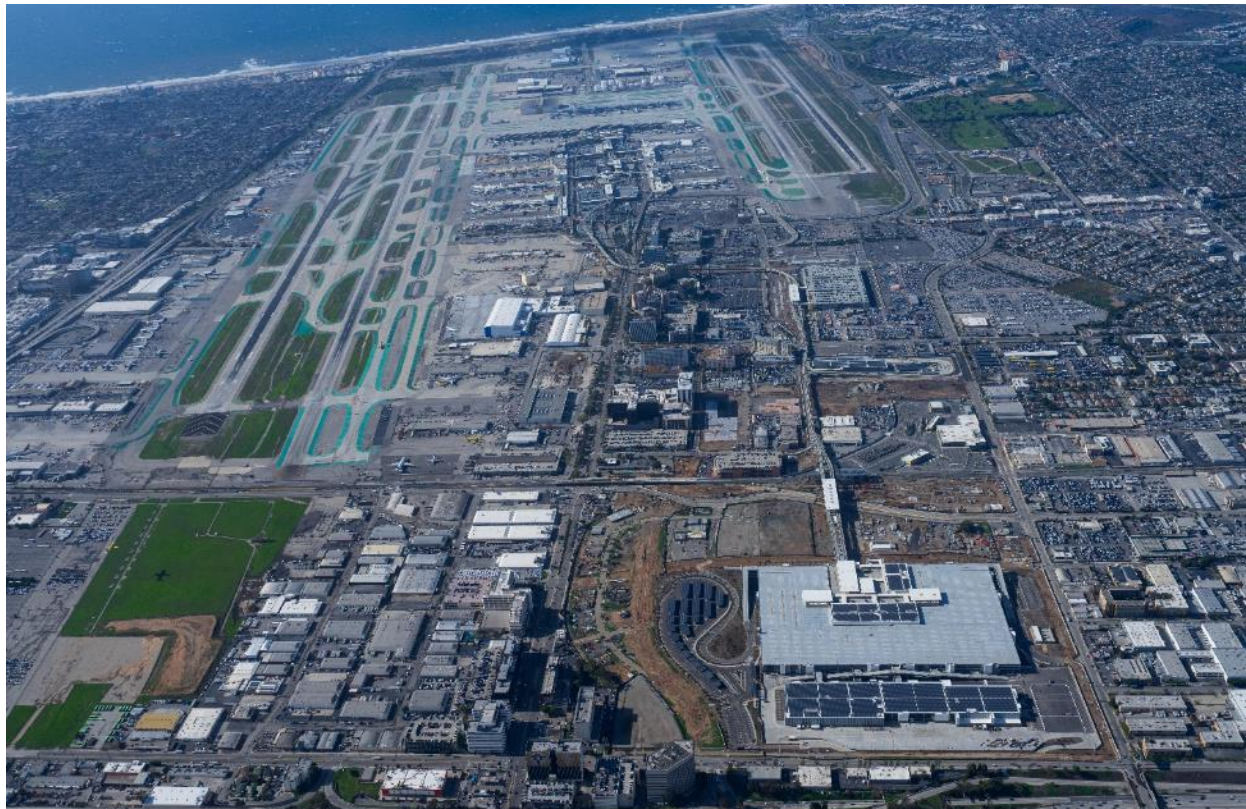


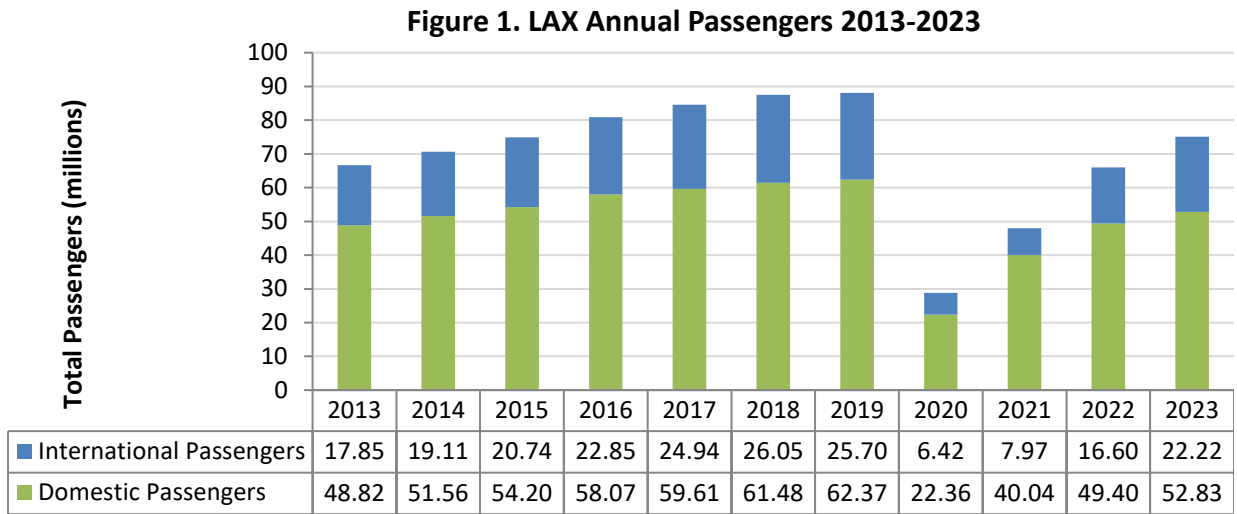
Image: Aerial view of LAX, looking West. (Credit: Los Angeles World Airports (LAWA))

**D. LAX Air Traffic Activity**

LAWA reports air traffic activity on a monthly basis and keeps an archive of this activity online at <https://www.lawa.org/en/lawa-investor-relations/statistics-for-lax>. The subpages entitled “Air Traffic Ten Year Summary” and “Volume of Air Traffic” provide air passenger, air cargo, and aircraft operations activity statistics for LAX for the calendar year 2023.

**E. LAX Passenger Volume**

As shown below in Figure 1, LAX passenger volume totaled approximately 75.05 million annual passengers (MAP) in 2023, a 13.70% increase compared to 2022. International passenger volume was approximately 22.22 MAP in 2023, a 33.87% increase compared to 16.60 MAP<sup>[2]</sup> in 2022. Domestic passenger volume was up 6.93% compared to 2022, from approximately 49.40 MAP in 2022 to 52.83 MAP in 2023.



Data Source: LAWA, Financial Management Systems, Revenue Agreement Management System (aka PROPworks™).



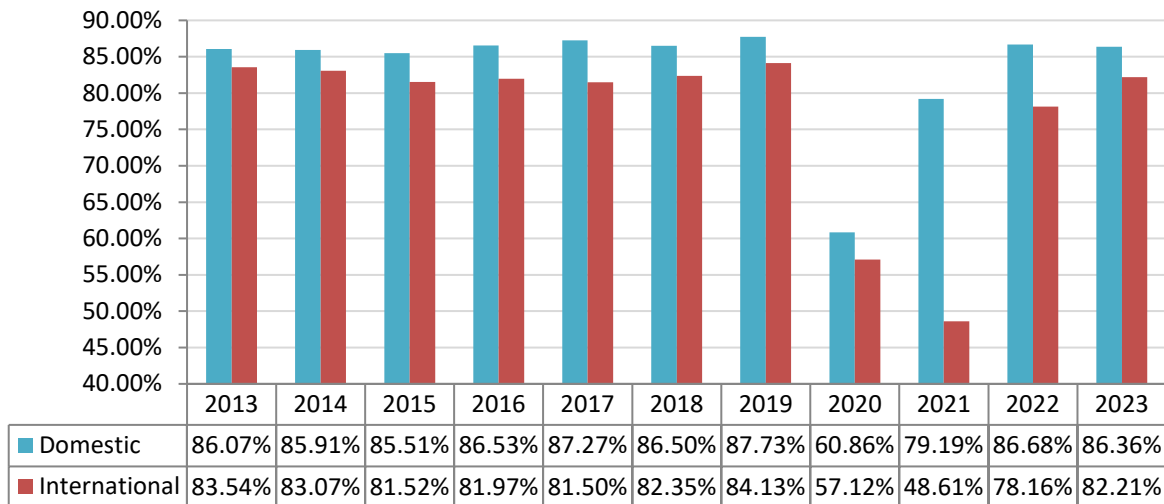
Image: Aerial view of the Consolidated Rent-A-Car facility, looking north. (Credit: Los Angeles World Airports (LAWA))

<sup>[2]</sup> LAWA updated its 2022 LAX international passengers.

## F. Load Factor

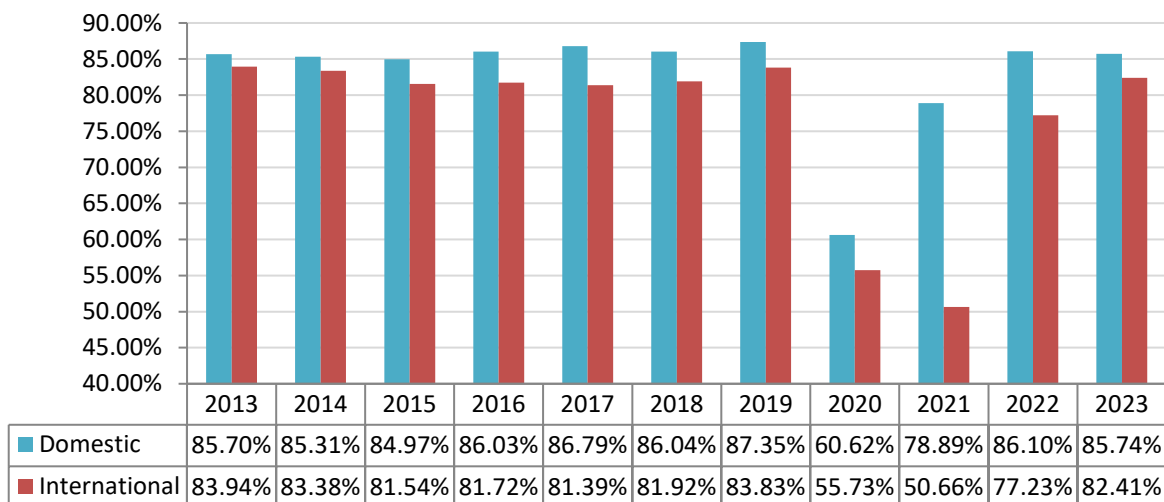
Load factor is the proportion of available seats filled per aircraft that measures how much passenger carrying capacity is used. Load factor is calculated by dividing Revenue Passenger Miles<sup>[3]</sup> by the Available Seat Miles.<sup>[4]</sup> Figure 2a below shows the change in load factor for aircraft departing LAX for the past decade, while Figure 2b shows the change in load factor for aircraft arriving at LAX for the same timeframe. In 2023, the load factor for departures from LAX increased by 4.05% for international flights and decreased by 0.32% for domestic flights. For arrivals to LAX, the load factor increased by 5.18% for international flights and decreased by 0.36% for domestic flights when compared to 2022.

**Figure 2a. Load Factor for Departures from LAX 2013-2023**



Data Source: Bureau of Transportation Statistics T-100 Segment Data

**Figure 2b. Load Factor for Arrivals to LAX 2013-2023**



Data Source: Bureau of Transportation Statistics T-100 Segment Data

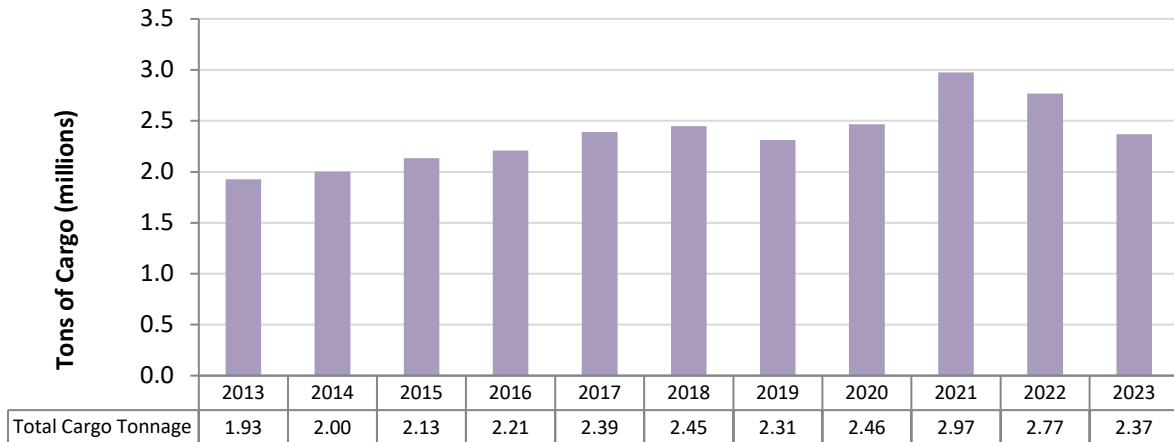
<sup>[3]</sup> Revenue Passenger Miles show the number of miles traveled by paying passengers. It is calculated as the number of paying passengers on a flight multiplied by the total distance traveled.

<sup>[4]</sup> Available Seat Miles is the total passenger capacity of an airline in miles and is captured by multiplying the total number of seats available on a flight and the total number of miles in which those seats were flown during scheduled flights.

## G. LAX Cargo Volume

Cargo volume in 2023 totaled approximately 2.37 million tons, a 14.46% decrease compared to 2022<sup>[5]</sup>. Figure 3 below shows historical cargo volumes for LAX over the past ten years.

**Figure 3. LAX Annual Cargo Tonnage 2013-2023**

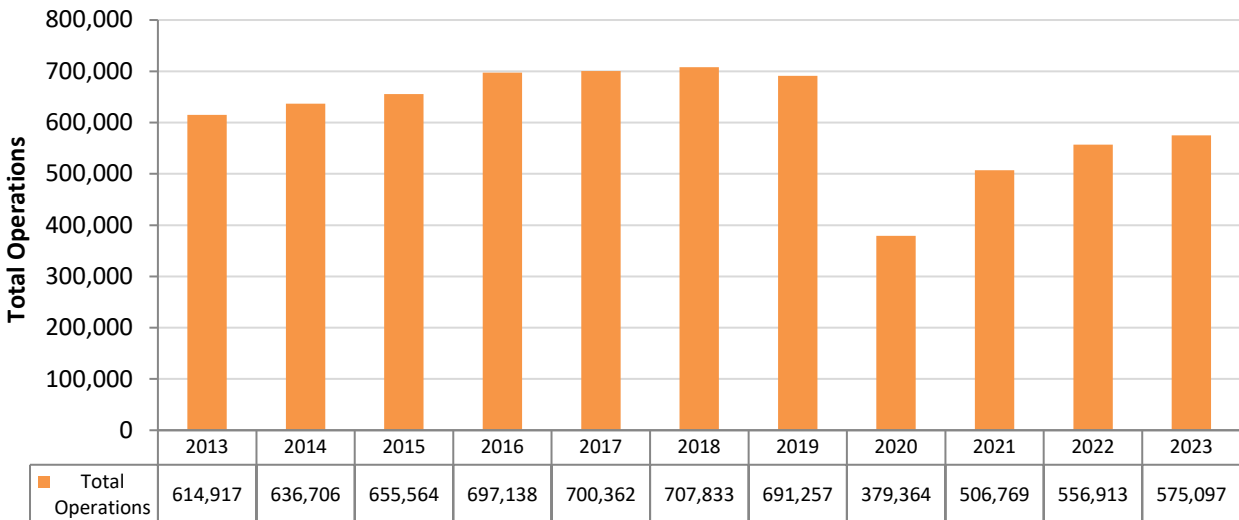


Data Source: LAWA, Financial Management Systems, Revenue Agreement Management System (aka PROPworks™).

## H. LAX Aircraft Operations

Figure 4 below shows the change in aircraft operations activity at LAX for the past decade. The number of aircraft operations (landings and takeoffs) totaled 575,097 in 2023, up 3.27% from 556,913 aircraft operations in 2022.

**Figure 4. LAX Annual Operations 2013-2023**



Data Source: LAWA, Financial Management Systems, Revenue Agreement Management System (aka PROPworks™).

<sup>[5]</sup> LAWA updated its 2022 LAX cargo tonnage.

**I. Aviation Activity in the SCAG Metropolitan Planning Region**

There are currently seven commercial passenger airports in the Southern California Association of Governments (SCAG) metropolitan planning region:<sup>[6]</sup>

- 1) Hollywood Burbank Airport (BUR)
- 2) Los Angeles International Airport (LAX)
- 3) Long Beach Airport (LGB)
- 4) Ontario International Airport (ONT)
- 5) Palm Springs International Airport (PSP)
- 6) San Bernardino International Airport (SBD)
- 7) John Wayne Airport (SNA)

These airports served approximately 106.29 million annual passengers in 2023 (up approximately 11.60% from 95.24 million annual passengers in 2022) and approximately 3.43 million tons of cargo/mail in 2023. The seven SCAG region commercial passenger airports had about 1.56 million aircraft operations in 2023. LAX handled approximately 70.61% of regional passenger volume among the seven airports in 2023.

The tables below summarize 2023 and 2022 air passengers, cargo/mail tonnage, and aircraft operations totals by airport in absolute numbers (Table 2) and by percentage of total (Table 3).

**Table 2. 2023 and 2022 Aviation Activity at SCAG Region Commercial Passenger Airports**

Airport	2023			2022 <sup>[7]</sup>		
	Passengers	Cargo/Mail (Tons)	Total Operations	Passengers	Cargo/Mail (Tons)	Total Operations
BUR	6,034,729	37,265	141,695	5,898,736	44,571	142,611
LAX	75,050,851	2,368,148	575,097	66,005,087	2,768,491	556,913
LGB	3,739,307	14,389	356,266	3,242,302	15,849	316,842
ONT	6,430,033	752,199	104,923	5,740,593	853,165	109,014
PSP	3,237,325	131	62,988	2,981,844	215	61,643
SBD	54,690	236,500	48,312	10,202	229,000	46,610
SNA	11,741,325	17,863	273,175	11,360,959	17,068	303,970
<b>Total</b>	<b>106,288,260</b>	<b>3,426,622</b>	<b>1,562,456</b>	<b>95,239,603</b>	<b>3,928,359</b>	<b>1,537,603</b>

Data Sources: Individual airport statistical reports, Federal Aviation Administration (FAA) Air Traffic Activity Data System (ATADS), and SCAG.

**Table 3. 2023 and 2022 Aviation Activity at SCAG Region Commercial Passenger Airports (by percentage of total)**

Airport	2023			2022		
	Passengers	Cargo/Mail (Tons)	Total Operations	Passengers	Cargo/Mail (Tons)	Total Operations
BUR	5.68%	1.09%	9.07%	6.19%	1.13%	9.27%
LAX	70.61%	69.11%	36.81%	69.30%	70.47%	36.22%
LGB	3.52%	0.42%	22.80%	3.40%	0.40%	20.61%
ONT	6.05%	21.95%	6.72%	6.03%	21.72%	7.09%
PSP	3.05%	0.01%	4.03%	3.13%	0.01%	4.01%
SBD	0.05%	6.90%	3.09%	0.01%	5.83%	3.03%
SNA	11.05%	0.52%	17.48%	11.93%	0.43%	19.77%
<b>Total</b>	<b>100.00%</b>	<b>100.00%</b>	<b>100.00%</b>	<b>100.00%</b>	<b>100.00%</b>	<b>100.00%</b>

<sup>[6]</sup> The SCAG region encompasses Los Angeles, Orange, Ventura, San Bernardino, Riverside, and Imperial counties.

<sup>[7]</sup> LAX, LGB, ONT, SBD, and SNA revised their 2022 numbers, and it has been reflected in this report.

Table 4 below shows each airport's share of regional air passenger traffic from 2003 to 2023.

Table 4. Share of Passenger Activity at SCAG Region Commercial Passenger Airports from 2003-2023 (by percentage of total) <sup>[8]</sup>								
Year	LAX	BUR	LGB	ONT	PSP	SBD <sup>[9]</sup>	SNA	Regional Total
2003	69.7%	6.0%	3.6%	8.3%	1.6%	-	10.8%	100.0%
2004	70.5%	5.7%	3.4%	8.1%	1.6%	-	10.8%	100.0%
2005	69.6%	6.2%	3.4%	8.2%	1.6%	-	10.9%	100.0%
2006	69.6%	6.5%	3.1%	8.0%	1.7%	-	11.0%	100.0%
2007	69.3%	6.6%	3.2%	8.0%	1.8%	-	11.1%	100.0%
2008	70.5%	6.3%	3.4%	7.3%	1.8%	-	10.6%	100.0%
2009	71.5%	5.8%	3.7%	6.2%	1.9%	-	11.0%	100.0%
2010	72.5%	5.5%	3.7%	5.9%	1.8%	-	10.6%	100.0%
2011	73.7%	5.1%	3.7%	5.4%	1.8%	-	10.3%	100.0%
2012	74.2%	4.7%	3.7%	5.0%	2.0%	-	10.3%	100.0%
2013	75.4%	4.3%	3.3%	4.5%	2.0%	-	10.4%	100.0%
2014	76.2%	4.2%	3.0%	4.4%	2.1%	-	10.1%	100.0%
2015	76.7%	4.0%	2.6%	4.3%	1.9%	-	10.4%	100.0%
2016	77.3%	4.0%	2.7%	4.1%	1.9%	-	10.0%	100.0%
2017	76.8%	4.3%	3.4%	4.1%	1.9%	-	9.5%	100.0%
2018	76.3%	4.6%	3.4%	4.5%	2.0%	-	9.3%	100.0%
2019	75.6%	5.1%	3.1%	4.8%	2.2%	-	9.2%	100.0%
2020	73.0%	5.0%	2.7%	6.4%	3.2%	-	9.6%	100.0%
2021	70.5%	5.5%	3.1%	6.6%	3.1%	-	11.3%	100.0%
2022	69.3%	6.2%	3.4%	6.0%	3.1%	<0.1%	11.9%	100.0%
2023	70.6%	5.7%	3.5%	6.1%	3.1%	0.1%	11.1%	100.0%

Data Sources: Individual airport's statistical reports, FAA ATADS, and SCAG.



Image: LAX's People Mover East Intermodal Transportation Facility station. (Credit: Los Angeles World Airports (LAWA))

<sup>[8]</sup> Percentages are rounded to the nearest tenth and may not add to 100% due to rounding.

<sup>[9]</sup> SBD began commercial passenger service in 2022. This airport was not tracked in prior reports.