

LAX

LAWA Single-Use Plastic Water Bottle Phase-Out Policy

Effective June 30, 2023, LAWA and all existing businesses operating at LAX and VNY, including concessionaires, restaurants, and airline lounges, shall not sell or distribute single-use plastic water bottles at LAX or VNY.

**November 7, 2019 –
Resolution 26881**

The Board of Airport Commissioners adopted the Sustainability Action Plan for LAWA (SAP), which outlines an ambitious set of prioritized goals, short- and medium-term targets, and high-level implementation actions for reducing environmental impact from the operations of LAX and Van Nuys Airport.



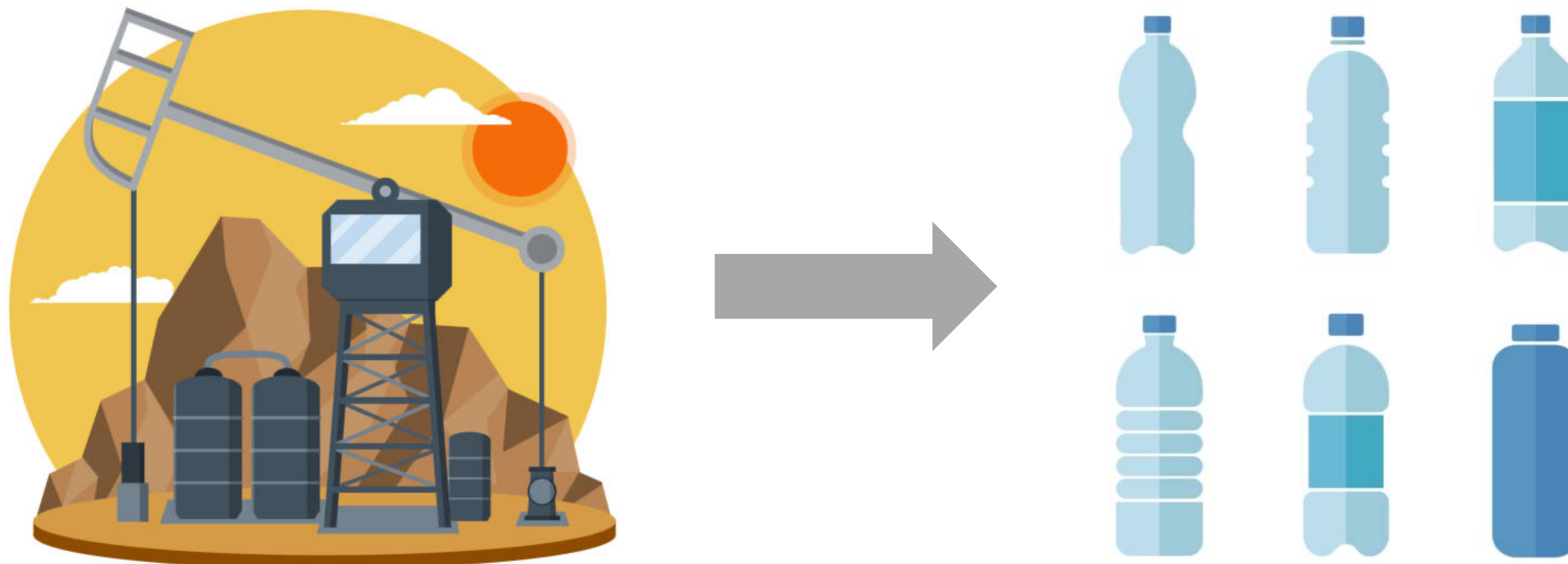
Policy Goals

Move away from single-use plastics to reduce plastic waste and pollution while helping passengers reduce their environmental impact while traveling.



Why Phase-Out Single-Use Plastic Water Bottles?

Reduce Fossil Fuel Usage



Almost all plastic water bottles are made from petroleum, requiring **nearly 17 million gallons of crude oil annually.**

Why Phase-Out Single-Use Plastic Water Bottles?

Reduce the amount of waste going to landfills.



The majority of plastics are never recycled, taking centuries to decompose and harming wildlife.

Why Phase-Out Single-Use Plastic Water Bottles?

Combat Plastic Pollution

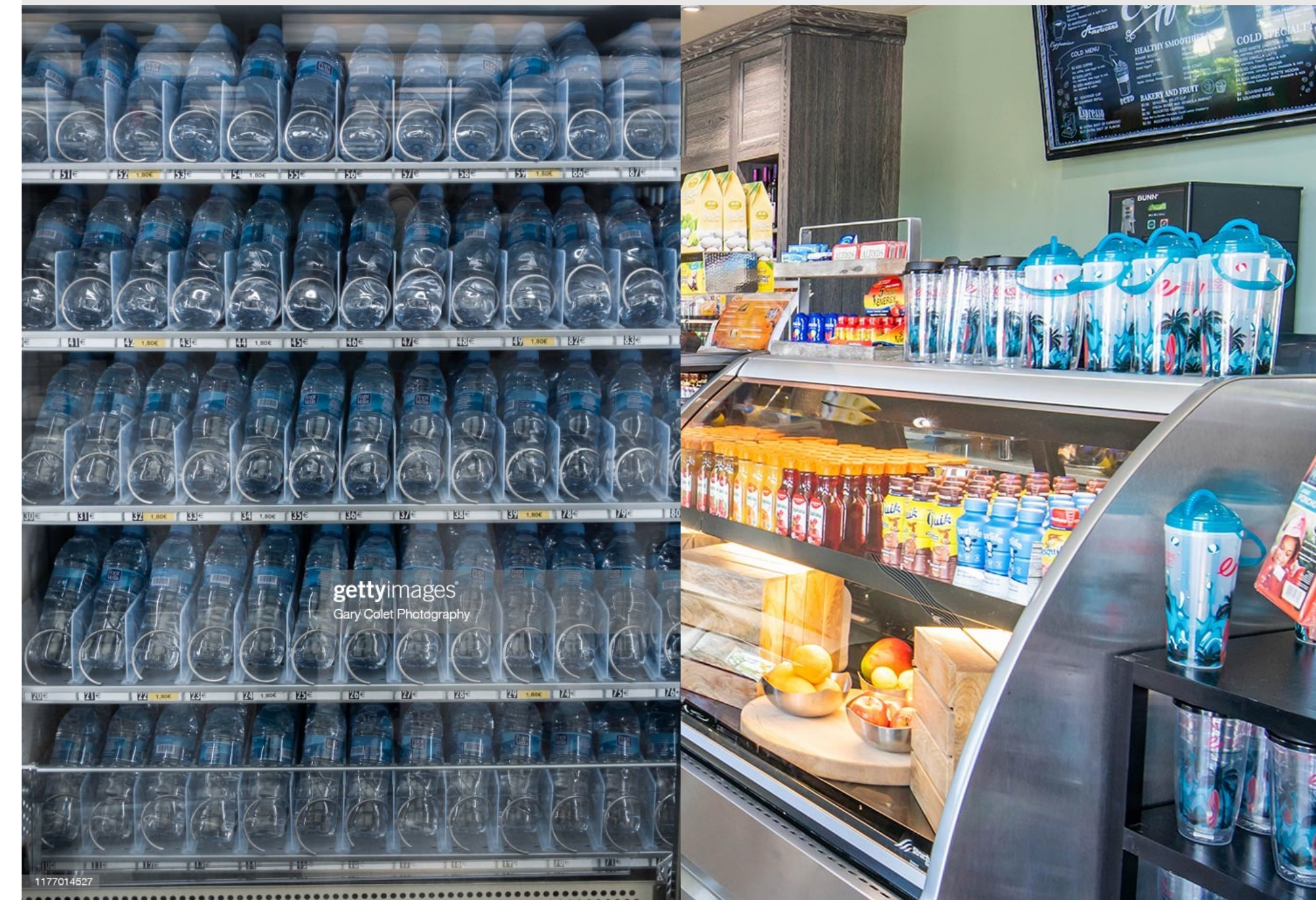


It is estimated that 8 million tons of plastic enter the oceans every year.
Marine life ingest and suffocate on plastic and microplastic.

Who Does This Apply to?

All businesses operating at LAX and VNY, including:

- Concessionaires, restaurants, airline lounges, etc.
- Campus-wide
- Vending machine providers
- On-campus events



What are the options?



Reusable and refillable bottles



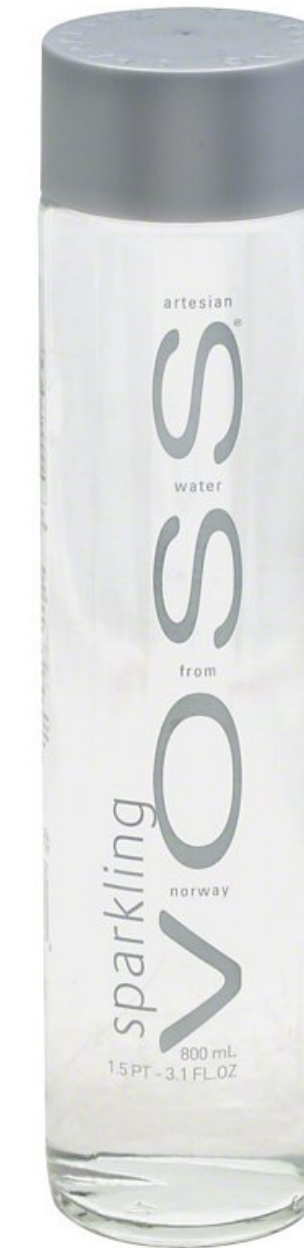
What are the options?



Multi or Single-Use Aluminum bottles



Single-Use Carton water



Multi or Single-Use Glass bottles

Reporting Requirements

- Annual reporting is required by January 31st.
- Report annually:
 - The brand(s)
 - Type of material(s)
 - Number of water bottles sold or distributed at LAX and VNY for the prior year

www.lawa.org/lawa-environment/lax



English (United States) ▼

LAWA
Los Angeles World Airports

Water Bottle Reporting Form

The survey will take approximately 4 minutes to complete.

* Required

1. Operator Name *

Enter your answer

2. Contact Name *

Enter your answer

3. Contact Email *

Enter your answer

4. Contact Phone Number *

Enter your answer

5. Total number of water bottles sold in the previous calendar year *

Enter your answer

6. What kind(s) of water bottles were sold in the previous calendar year? (select all that apply) *

☐ Reusable

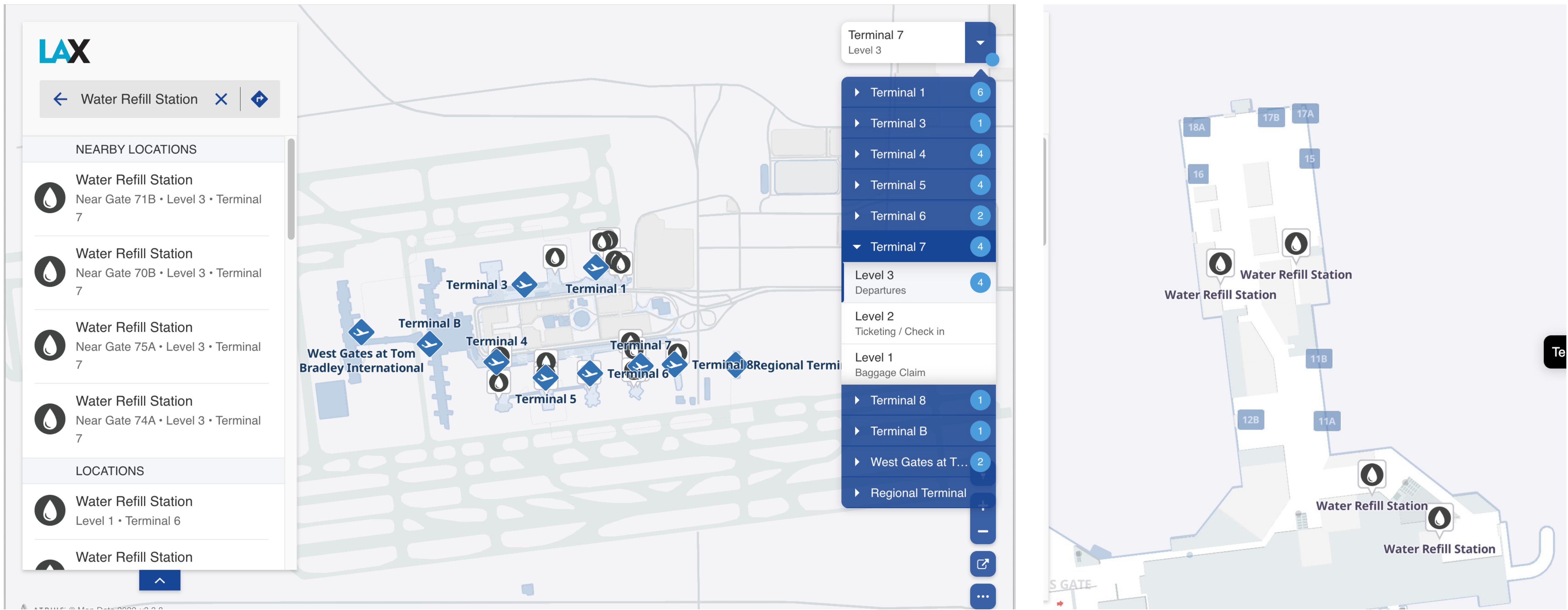
☐ Aluminum

☐ Glass

☐ Carton

Resources

Water Refill Stations can be located on LAX's interactive map: www.maps.lawa.org



FAQs

Questions

What kind of water does this apply to?

Answers

Single-use 'bottled drinking water' is defined as non-carbonated and unflavored:

- Purified water
- Spring Water
- Mineral water
- Artesian water
- Well water
- Tap water
- Electrolyte-enhanced water

The policy currently does not apply to other beverages like soda, tea, or juice.

Questions?

Contact Us

sustainability@lawa.org

