

WELCOME to the DRAFT EIR PUBLIC WORKSHOP

LAX United Airlines (UAL) East Aircraft Maintenance
and Ground Support Equipment (GSE) Project

Tuesday, July 31, 2018
5:30 pm to 7:30 pm

Meeting Location:

Westchester – Loyola Village Branch Library
7114 W. Manchester Ave., Los Angeles, CA 90045

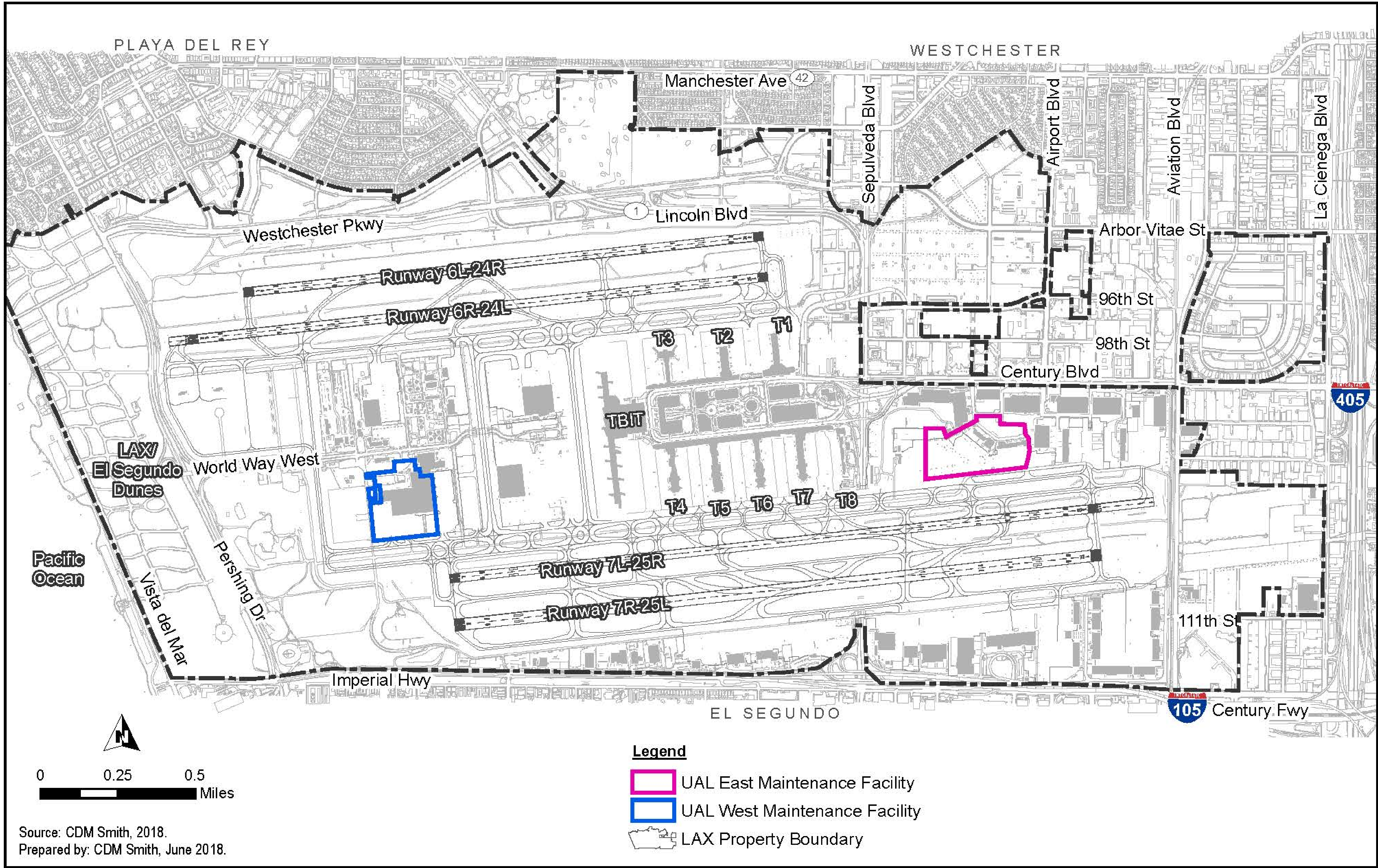
Meeting Location:
Westchester – Loyola Village Branch Library
7114 W. Manchester Ave., Los Angeles, CA 90045

Public Workshop Objectives

- Provide information about:
 - The LAX United Airlines East Aircraft Maintenance and Ground Support Equipment (GSE) Proposed Project
 - The California Environmental Quality Act (CEQA) process
 - Draft EIR findings
 - Next steps in the process
- Collect community comments



Existing UAL LAX Maintenance Facilities Location Map



LAX UAL East Aircraft Maintenance and GSE Project

Existing UAL Maintenance Facilities at LAX

Figure
2-1

Project Site



LAX UAL East Aircraft Maintenance and GSE Project

Project Site

Figure
2-3

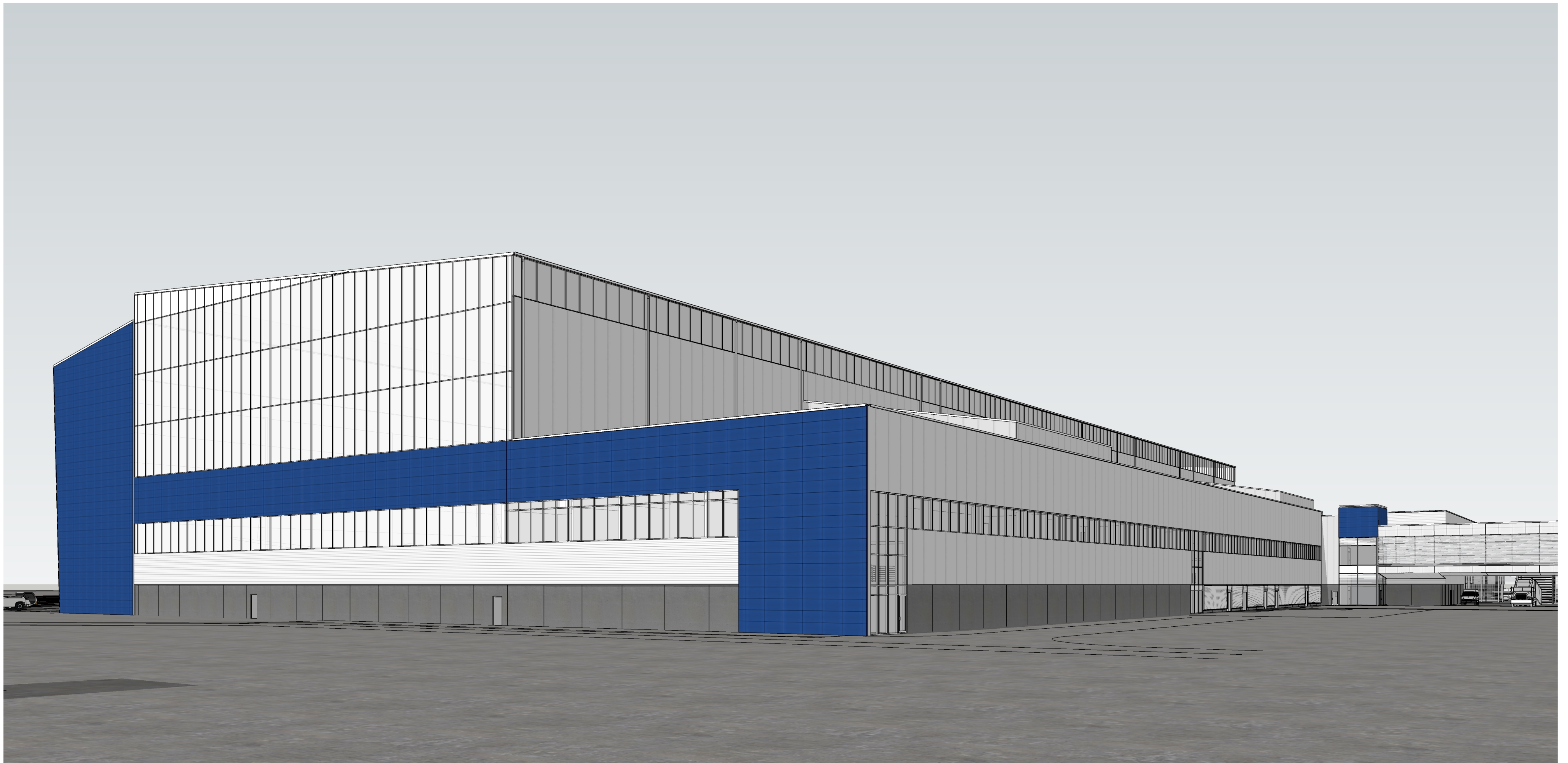
Project Objectives

- Consolidate & modernize UAL's existing aircraft and GSE maintenance facilities
- Locate UAL's aircraft and GSE maintenance facilities closer to UAL's gates
- Provide sufficient aircraft parking spaces on UAL's leasehold
- Provide facilities to support the maintenance requirements of UAL's operations



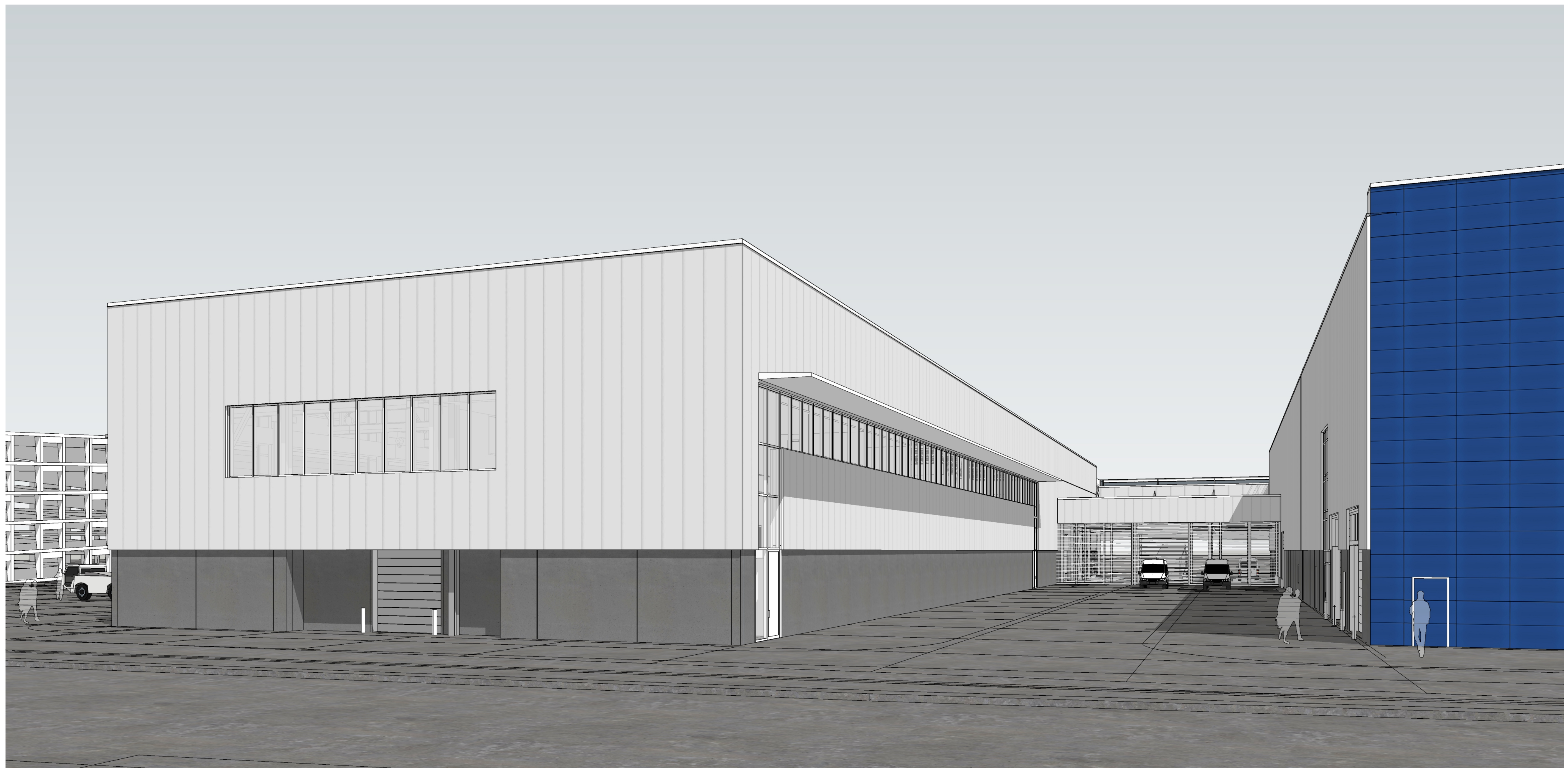
Key Components of Proposed Project

- Demolish some of the existing buildings
- Construct the new maintenance facility
- Reconfigure the apron & aircraft parking
- Provide an aircraft wash pad
- Construct a blast fence

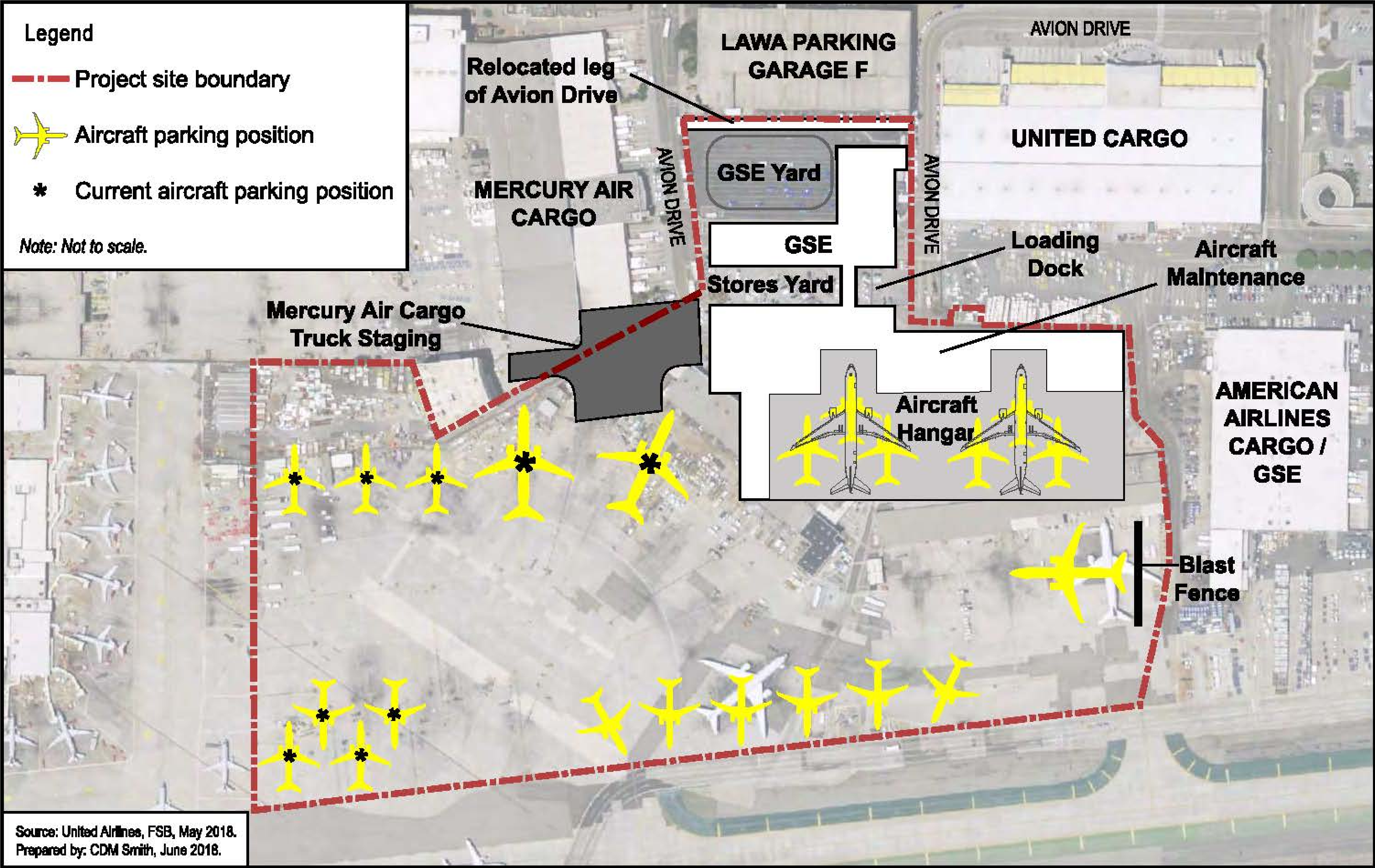


STATE OF THE ART FACILITY

- The proposed project would be designed and constructed in accordance with LEED® Silver standards and the Los Angeles Green Building Code.
- The proposed project also incorporates other modern components, such as accommodations for electric GSE.



Conceptual Site Plan & Project Components



LAX UAL East Aircraft Maintenance and GSE Project

Project Site Plan

Figure
2-6

CEQA Overview

- Purpose is to inform decision-makers, agencies, organizations, and the public of the environmental effects of a project
- Applies to discretionary projects
- Identifies potential effects on the environment
- Identifies ways to avoid or reduce potential significant effects through mitigation measures or alternatives

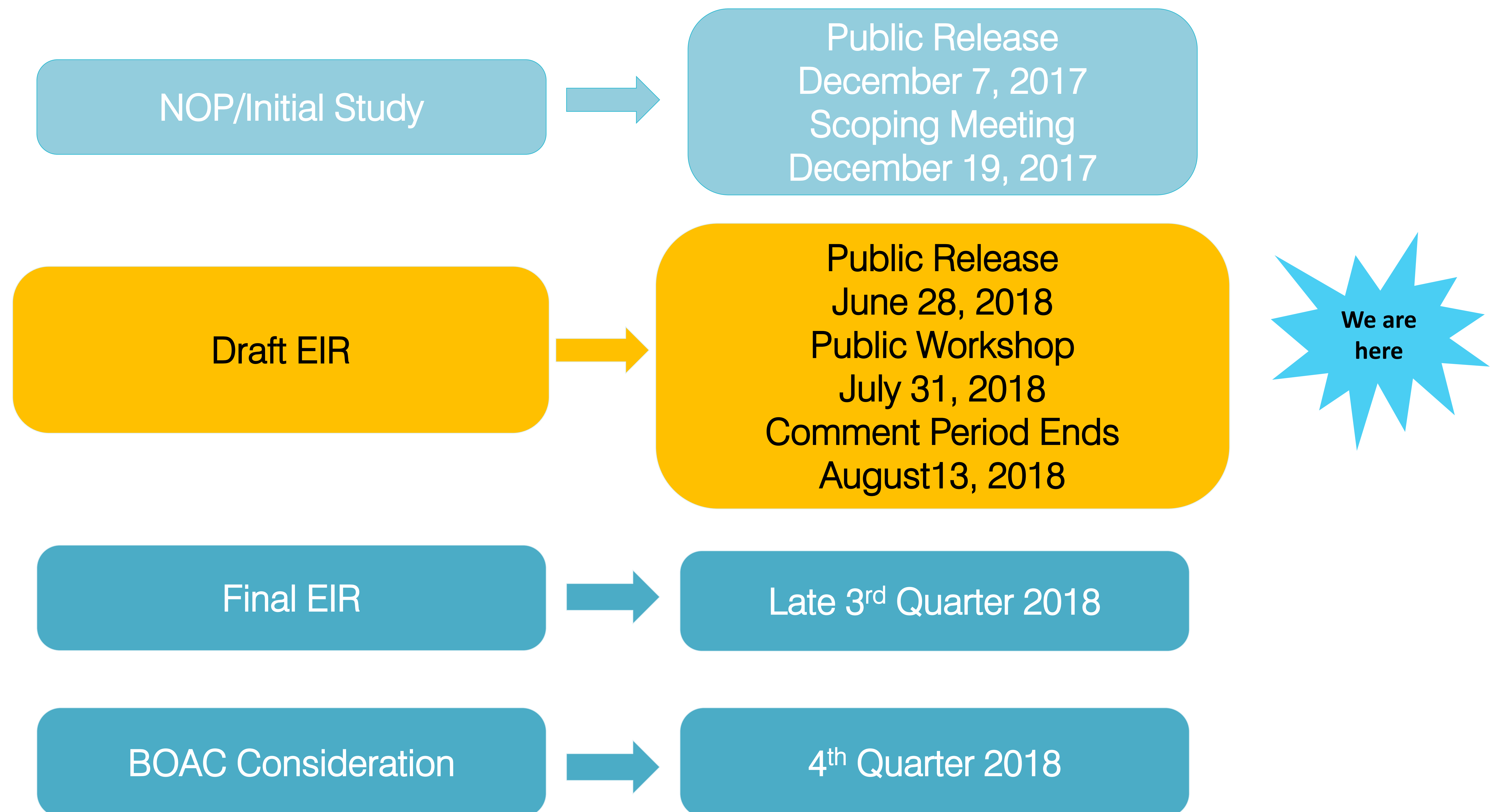
Initial Study Findings

No Impact / Less Than Significant (No Further Analysis)		Analysis Carried Forward in EIR
<ul style="list-style-type: none">• Aesthetics• Agricultural/Forestry Resources• Biological Resources• Cultural Resources<ul style="list-style-type: none">• Archaeological Resources• Paleontological Resources• Geology and Soils• Hazards and Hazardous Materials	<ul style="list-style-type: none">• Hydrology and Water Quality• Land Use and Planning• Mineral Resources• Noise• Population and Housing• Public Services• Recreation• Tribal Cultural Resources• Utilities and Service Systems	<ul style="list-style-type: none">• Air Quality• Cultural Resources<ul style="list-style-type: none">• Historical Resources• Greenhouse Gas Emissions• Transportation/Traffic• Cumulative Impacts• Other CEQA Considerations

Draft EIR Findings

Resource Category	Impact Level of Significance	Proposed Mitigation Measures
Air Quality – Construction	Significant and Unavoidable	MM-AQ (UAL)-1. Construction-Related Air Quality Mitigation Measures
Air Quality – Cumulative Construction	Significant and Unavoidable	MM-AQ (UAL)-1. Construction-Related Air Quality Mitigation Measures
Air Quality – Operations	Less Than Significant	None Required
Air Quality – Cumulative Operations	Less Than Significant	None Required
Human Health Risk Assessment – Construction	Less Than Significant	None Required; however, further reduced with implementation of MM-AQ (UAL)-1
Human Health Risk Assessment – Cumulative Construction	Less Than Significant	None Required; however, further reduced with implementation of MM-AQ (UAL)-1
Human Health Risk Assessment – Operations	Less Than Significant	None Required
Human Health Risk Assessment – Cumulative Operations	Less Than Significant	None Required
Historical Resources	Significant and Unavoidable	No feasible mitigation is available
Historical Resources – Cumulative	Less Than Significant	None Required
Construction plus Operations	Less Than Significant	None Required; however, further reduced with implementation of MM-AQ (UAL)-1
Construction Transportation/Traffic	Less Than Significant	None Required
Construction Transportation/Traffic – Cumulative	Less Than Significant with Mitigation	MM-ST (UAL)-1. Designated Truck Delivery Hours
Operational Transportation/Traffic	Less Than Significant	None Required
Operational Transportation/Traffic – Cumulative	Less Than Significant	None Required
Wasteful, Inefficient or Unnecessary Consumption	Less Than Significant	None Required; however, further reduced during construction with implementation of MM-AQ (UAL)-1
Reliance on Fossil Fuels	Less Than Significant	None Required; however, further reduced during construction with implementation of MM-AQ (UAL)-1
Comply with State or Local Plan for Renewable Energy or Energy Efficiency	Less Than Significant	None Required

Schedule & Anticipated Milestones



Public Comments

- Comments can be handwritten on comment cards and submitted at this public meeting
- Comments can be mailed to the following contact:
Los Angeles World Airports
Attention: Angelica Espiritu, City Planner
One World Way, P.O. Box 92216
Los Angeles, CA 90009-2216
- Comments can be submitted online at:
<http://www.lawa.org/ourLAX/Comments.aspx>

Comments must be received by (not postmarked by) 5:00 pm, Monday, August 13, 2018