



LAX Development Program Update

27 October 2011



Looking east towards the Bradley West Core (Great Hall). Steel erection for two of the three bays is nearly complete.
October 21, 2011



North Gatehouses in various stages of completion.
October 21, 2011



Gate 134 which is anticipated to open in October 2012. This gate will be the first one to open months prior to opening of the entire Bradley West facility. The three openings are for the three jetbridges that will attach to the gatehouse.

October 21, 2011



Interior of Gatehouse 134. Escalator (covered) and stairs leading to arrival deck.
October 21, 2011



In order to open Gate 134, a temporary connector will be built to connect the old north concourse to the new Bradley West concourse. The first piece of steel is now set.

October 21, 2011



North Concourse. The first light pole has been installed. These light poles are a signature design feature of the architect and will run the entire length of the concourse. The light poles are intended to make one feel they are walking down a nice streetscape. October 21, 2011



View from the north concourse arrival level looking down to the departure level. The small trench in the middle is for the moving walkway.

October 21, 2011



Small concessions area in the middle of the north concourse.
October 21, 2011



One more view from the north concourse arrivals level looking south.
October 21, 2011



A key feature of the Bradley West Great Hall will be the elevator shaft that will be illuminated with artwork and have a clock reminiscent of old train stations.

October 21, 2011



Future retail concessions area on departure level. Restaurants and an eating area will be on the middle balcony. The top level will consist of airline lounges and offices.

October 21, 2011



North concourse basement where the utility rooms will be. Piping, conduit, and concrete pads for equipment are visible.

October 21, 2011

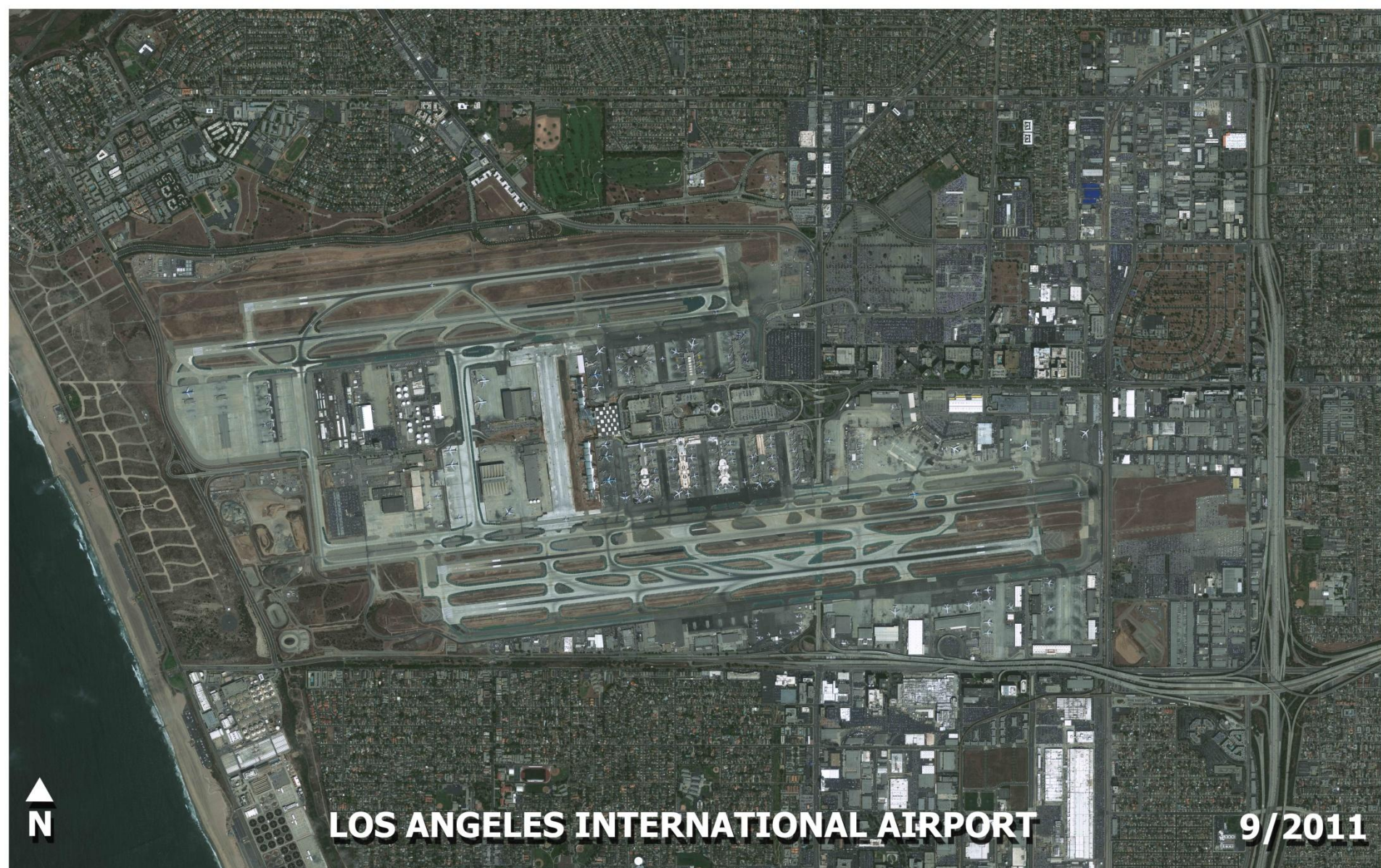


Ongoing construction at the new Central Utility Plant site
October 21, 2011



Some of the construction signage for the new Central Utility Plant. The signage hides the construction areas for a cleaner appearance while also giving the public tongue-in-cheek information as to what is happening at LAX. This type of signage is visible in many areas throughout the CTA and terminals due to all the construction going on.

October 21, 2011



LOS ANGELES INTERNATIONAL AIRPORT

9/2011

Satellite photo taken of LAX in September 2011.



LOS ANGELES INTERNATIONAL AIRPORT

9/2011

Satellite image of the airfield changes resulting from the LAX Development Program. The Crossfield Taxiway, Taxilane S, and the Bradley West facility are clearly visible



www.lawa.org