



Los Angeles
World Airports

AIRPORTS DEVELOPMENT GROUP



Airports Development Group

Development Program Update

August 2, 2012

The New Tom Bradley International Terminal



Workers removing the existing glass canopy at the “Front Door” of TBIT (upper level).
August 2, 2012

The New Tom Bradley International Terminal

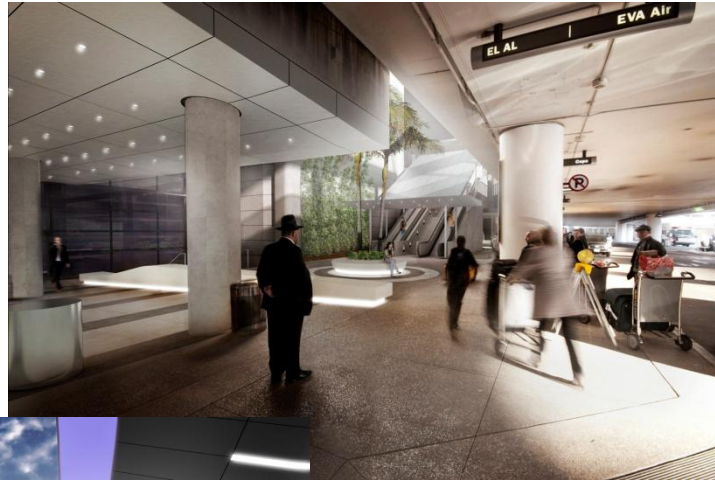


Renovations to the lower level entrance to TBIT are also beginning.
August 2, 2012

The New Tom Bradley International Terminal



Upper (Departures) Level



Lower (Arrivals) Level

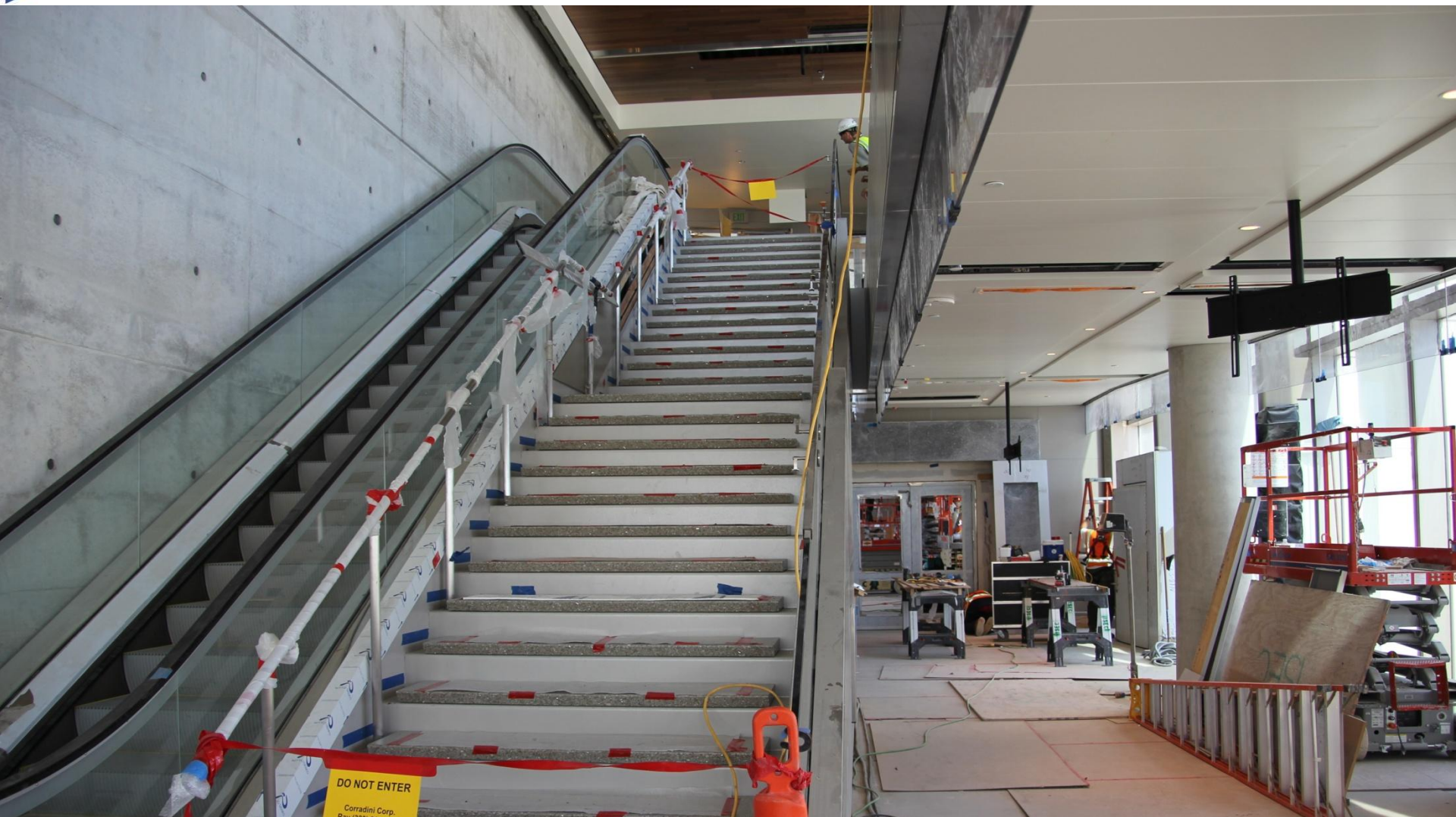
Various renderings of the new “Front Door” of TBIT when completed.

The New Tom Bradley International Terminal



View of the ramp for Gate 134 which will open in September 2012.
July 26, 2012

The New Tom Bradley International Terminal



Inside the Gatehouse for Gate 134. Elevator/stairs leading to arrival (sterile) corridor.
July 26, 2012

The New Tom Bradley International Terminal



The new arrival (sterile) corridor that leads to Customs. Unlike the current underground corridor, the new corridor will be above ground and has great views out the windows.

July 26, 2012

The New Tom Bradley International Terminal



This is a view that an arriving passenger will see as they leave the plane and walk through the arrival corridor. A more welcoming experience than an underground tunnel.

July 26, 2012

The New Tom Bradley International Terminal



The above ground arrival corridor as seen from the departure level near Gate 134.
July 26, 2012

The New Tom Bradley International Terminal



North concourse departure level. Workers are putting the final touches on the interior.
July 26, 2012

The New Tom Bradley International Terminal



One of the restrooms nearing completion in the north concourse.
July 26, 2012

The New Tom Bradley International Terminal



Work progressing on the Great Hall which will open in Spring 2013.

July 26, 2012

The New Tom Bradley International Terminal



One of the key architectural features of the new terminal will be these 7-story lightwells that will flood the Great Hall with natural light.

July 26, 2012

The New Tom Bradley International Terminal



Work is also progressing on the south concourse which will also open in Spring 2013.
July 26, 2012

The New Tom Bradley International Terminal



Exterior of the Great Hall. There is 310,785 square feet of glass which is enough to create a window the size of 6.5 football fields.

July 26, 2012

The New Tom Bradley International Terminal



Aerial view of the north concourse (note the jetways installed at two gates, completed roof, and reconstruction of the D10 taxilane currently underway between T3 and TBIT).
July 25, 2012

Taxilane D10 Reconstruction



The centerline of D10 is being reconstructed along with apron repairs and fuel hydrant relocations. Work began on June 26 and project will be completed by the end of 2012.
July 26, 2012

Taxilane D10 Reconstruction



Reconstruction of the centerline portion of Taxilane D10 between Terminal 3 and TBIT.
July 26, 2012

Central Utility Plant



Exterior of the new Central Utility Plant (CUP).
July 26, 2012

Central Utility Plant



Some of the large underground utility distribution piping for the new CUP.
July 26, 2012

Central Utility Plant



New cooling tower that is part of the CUP project. Between Parking Structures 5 & 6.
July 26, 2012

Central Utility Plant



New cooling tower that is part of the CUP project. Between Parking Structures 5 & 6.

July 26, 2012