



# *Airports Development Group*

## **Development Program Update**

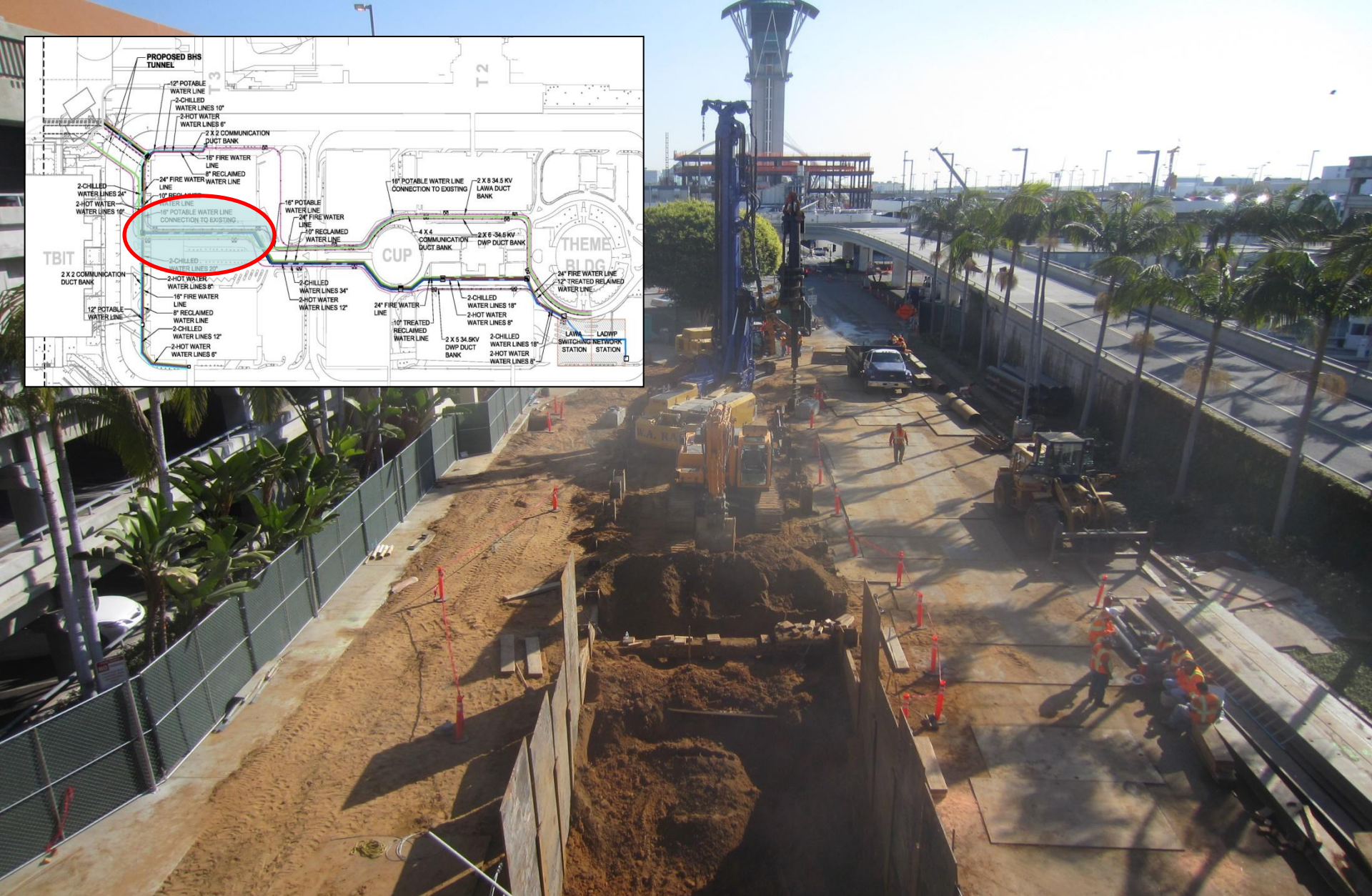
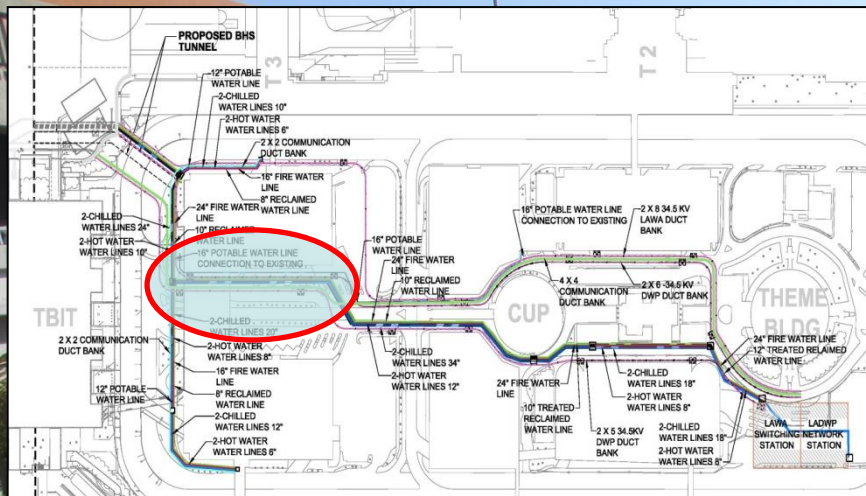
*March 13, 2012*





“Serious” conduit being installed in the new Central Utility Plant (CUP).  
February 21, 2012





Trenching for underground utilities from new Central Utility Plant to the Tom Bradley International Terminal. The highlighted area on the map is the area in this picture.  
 March 2, 2012





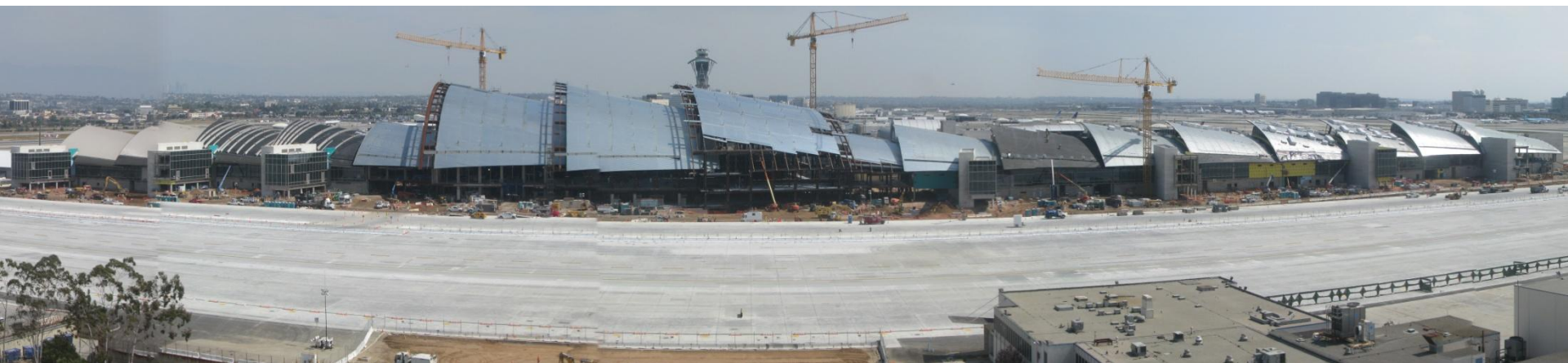
Utility vault pit across from the Tom Bradley International Terminal.  
March 2, 2012



# The New Tom Bradley International Terminal



March 16, 2010



March 12, 2012

Snapshot of what has been done in the past two years.





Steel erection for the new Tom Bradley International Terminal is complete.  
February 28, 2012



The finish for the roof is being installed on the north concourse. The beige area is what the entire roof will look like when complete.

March 8, 2012





The roof finish comes in a roll. It is then fed into a machine that crimps it and pushes it up to the roof so that workers can install it in pieces.

March 8, 2012







The North Gate Connector which will connect the old concourse to the new concourse. The northern-most gate in the old concourse will not be demolished since it can be used to accommodate A380 operations. The rest of the old concourse will be demolished.

March 8, 2012





Workers are preparing the interior of the north concourse for painting.  
March 8, 2012





The metal supports for the large glass panels which will enclose the sterile corridor are now being installed in the north concourse.

March 8, 2012





Installation of the ventilation system for the north concourse.  
March 8, 2012





The aluminum framing for the walls of the restrooms in the north concourse.  
March 8, 2012





Aluminum framing for the temporary wall separating the Great Hall and the north concourse. This temporary wall will allow the north concourse to open while the Great Hall is still under construction.

March 8, 2012





Interior of the Great Hall with a rendering of what it will look like when complete.  
March 8, 2012





Interior of the Great Hall looking towards the south concourse. With the exception of some small pieces, all of the steel for the new Tom Bradley International Terminal is set. March 8, 2012



# New Face of the CTA **EXISTING**

TOM BRADLEY INTERNATIONAL: departure level existing





# New Face of the CTA **PROPOSED**

**TOM BRADLEY INTERNATIONAL:** departure level proposed base scope





# New Face of the CTA **EXISTING**

TOM BRADLEY INTERNATIONAL TERMINAL - departure level entry existing





# New Face of the CTA **PROPOSED**

TOM BRADLEY INTERNATIONAL TERMINAL: departure level entry proposed base scope





# New Face of the CTA **EXISTING**

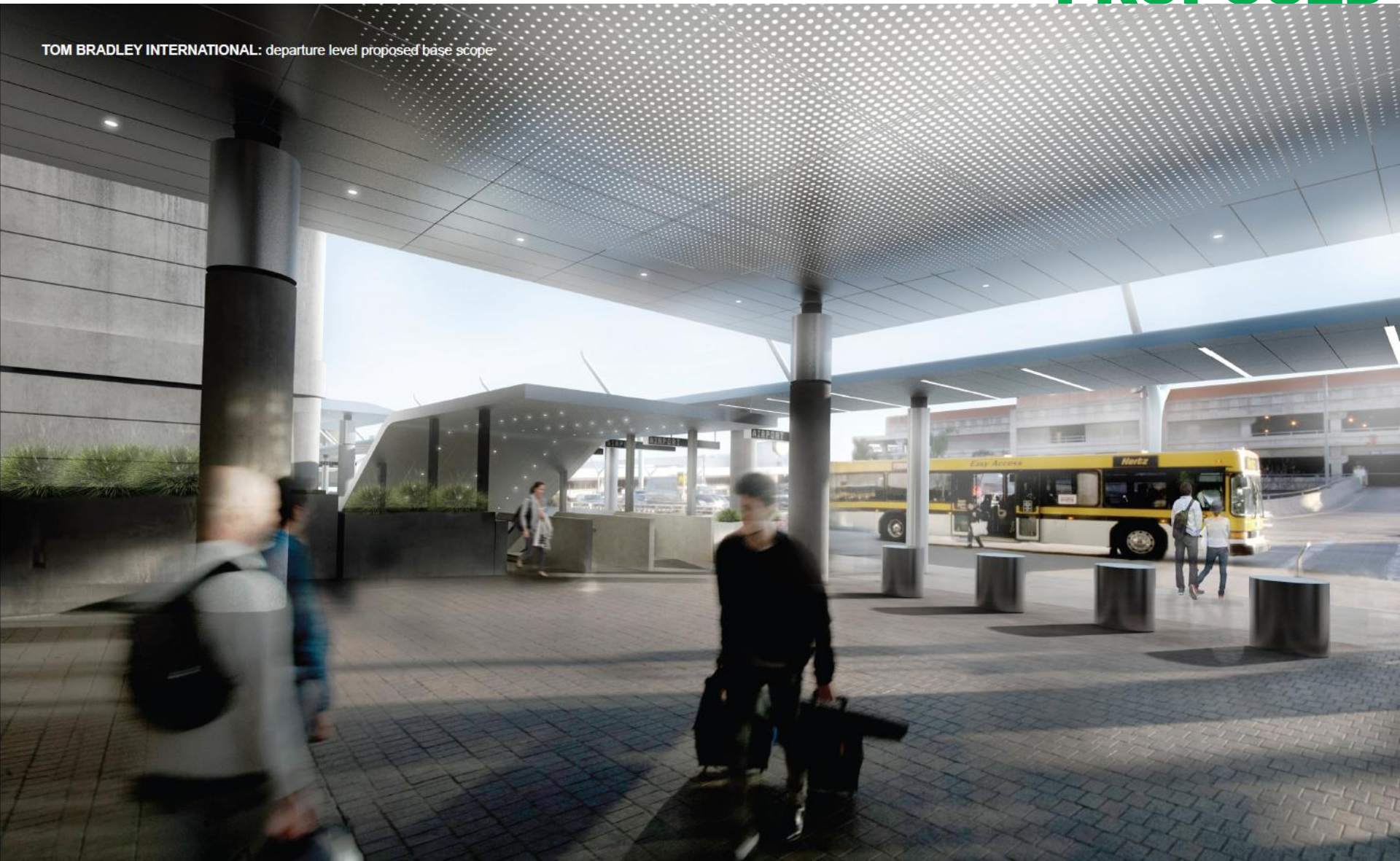
TOM BRADLEY INTERNATIONAL TERMINAL: departure level entry existing





# New Face of the CTA **PROPOSED**

TOM BRADLEY INTERNATIONAL: departure level proposed base scope





# New Face of the CTA

## EXISTING

TOM BRADLEY INTERNATIONAL TERMINAL: arrival level entry existing







Los Angeles  
World Airports

AIRPORTS DEVELOPMENT GROUP

# New Face of the CTA

## PROPOSED

TOM BRADLEY INTERNATIONAL TERMINAL: arrival level entry proposed







[www.lawa.org](http://www.lawa.org)