



Los Angeles
World Airports

AIRPORTS DEVELOPMENT GROUP



Airports Development Group

Development Program Update

June 28, 2012

The New Tom Bradley International Terminal Gate 134



A Boeing 747-400 passes by the new jetbridges installed at Gate 134. This is the first gate at LAX to have three jetbridges. Having multiple jetbridges at the gates will speed passenger boarding and deplaning for arriving/departing flights.

June 4, 2012

The New Tom Bradley International Terminal



Exterior view of the Great Hall. The smaller roofline is the north concourse.

June 22, 2012

The New Tom Bradley International Terminal



New north concourse on left, old north concourse on right. Old concourse to be demolished in 2014 allowing aircraft to park on both sides of the new concourse.

June 1, 2012

The New Tom Bradley International Terminal



At its highest point, the roof of the Great Hall will soar nearly 160 feet above ramp level.
June 1, 2012

The New Tom Bradley International Terminal



Inside one of the large concrete gate piers. The gate piers are where a person will take their first/last steps on U.S. soil when arriving/departing the new international terminal.

June 22, 2012

The New Tom Bradley International Terminal



Interior of the north concourse as viewed from the arrival (sterile) corridor.

June 22, 2012

The New Tom Bradley International Terminal



The terrazzo flooring is being installed on the departure level of the north terminal.
June 1, 2012

The New Tom Bradley International Terminal



The north concourse is nearing completion and scheduled to open in September 2012.
June 22, 2012

The New Tom Bradley International Terminal



The Great Hall is scheduled for opening in Spring 2013.

June 1, 2012

The New Tom Bradley International Terminal



The south concourse is scheduled for opening in Spring 2013.

June 22, 2012

Central Utility Plant



The new Central Utility Plant is scheduled for completion in 2014. In addition to the building itself, there is a lot of underground work being done for utility distribution

June 6, 2012

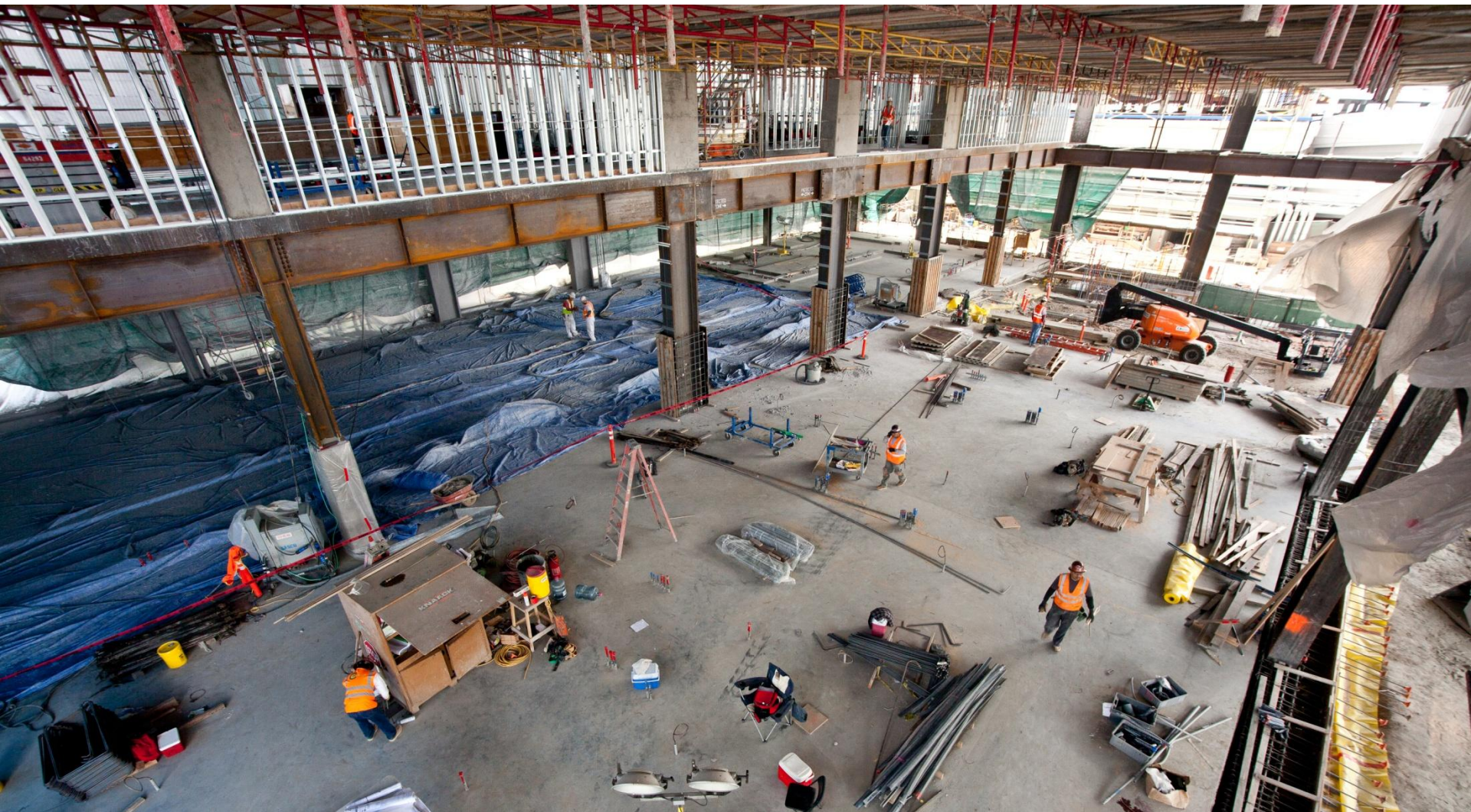
Central Utility Plant



Exterior of the new Central Utility Plant (CUP).

June 6, 2012

Central Utility Plant



Interior of the new Central Utility Plant (CUP).
June 6, 2012

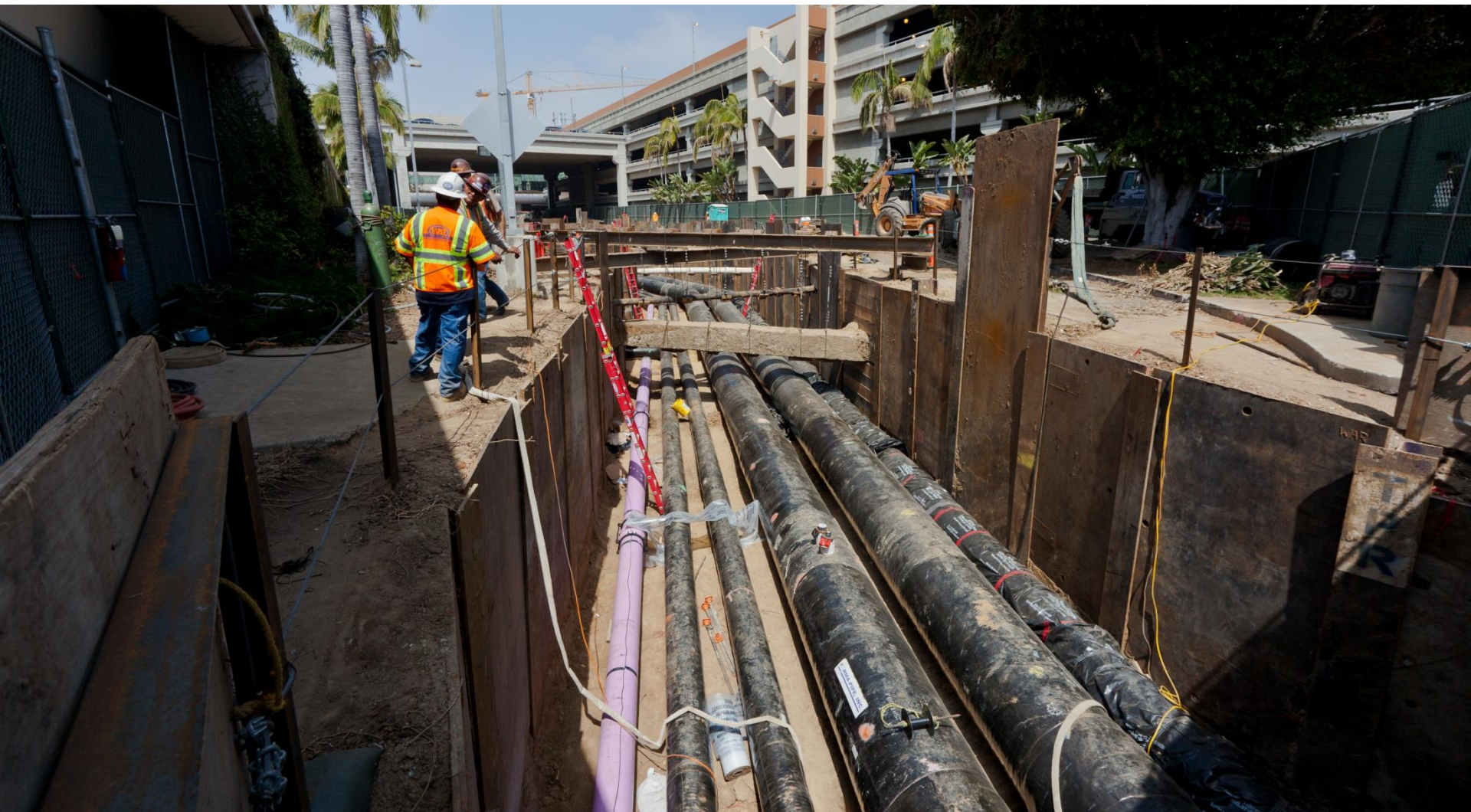
Central Utility Plant



The frame for the west cooling tower is visible right behind the yellow crane.

June 28, 2012

Central Utility Plant



Some of the 8.7 miles of underground distribution and plant piping for the new CUP.
June 6, 2012

Central Utility Plant



A “jack and bore” operation being done to lay piping underneath the roadway without having to tear up major portions of the road.

June 28, 2012