



# *Airports Development Group*

## **Development Program Update**

*June 7, 2011*



Concrete slab for Taxilane S being poured. Note the thickness of the concrete slab (19"), plus 12" cement-treated base and 6" crushed miscellaneous base underneath slab for a total thickness of 37". Taxilane S will open mid-summer. (June 3, 2011)



Aerial view of Bradley West and Taxilane S. (May 24, 2011)



The crawler cranes used to erect steel for the concourses have now been replaced by several tower cranes. Crawler cranes are now lifting steel for the core. (June 3, 2011)



Large crawler crane lifting a large support beam into place on the core. (June 3, 2011)



East side of north concourse. Gatehouses for the east side of Bradley West are under construction only several feet away from the back wall of TBIT. (June 3, 2011)



Aerial view showing proximity between gatehouses for the Bradley West north concourse and current TBIT north concourse. (May 24, 2011)



Glazing (glass windows) are now being installed in the north concourse. (June 3, 2011)



Ramp area offices and utilities for the north concourse. (June 3, 2011)



Heating, Ventilation, and Air Conditioning (HVAC) system located on the ramp level of the north concourse. (June 3, 2011)



One of the gatehouses for the north concourse. Glass walls will encase the gatehouses for a very open and airy look for the passengers entering/exiting aircraft. (June 3, 2011)



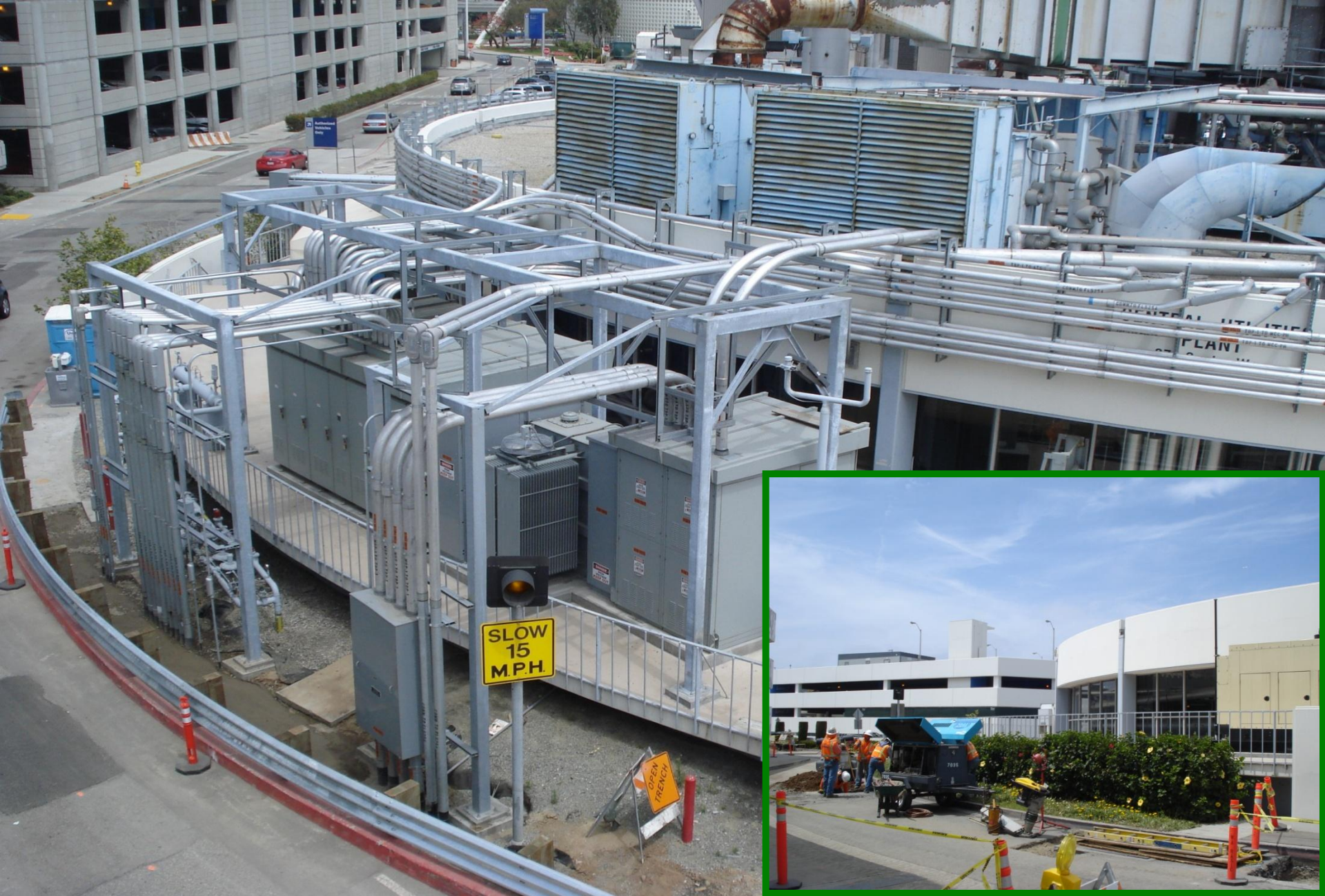
Core construction. Steel erected on the backside of TBIT for office and lounge areas. Large crawler cranes used to hoist core steel into place. (June 3, 2011)



Approximately 295,000 cubic yards of dirt was excavated for the core (and 27,500 for the concourses) for a total excavation of 322,500 cubic yards. The ground level for where the service road behind TBIT once was located is depicted above. (June 3, 2011)



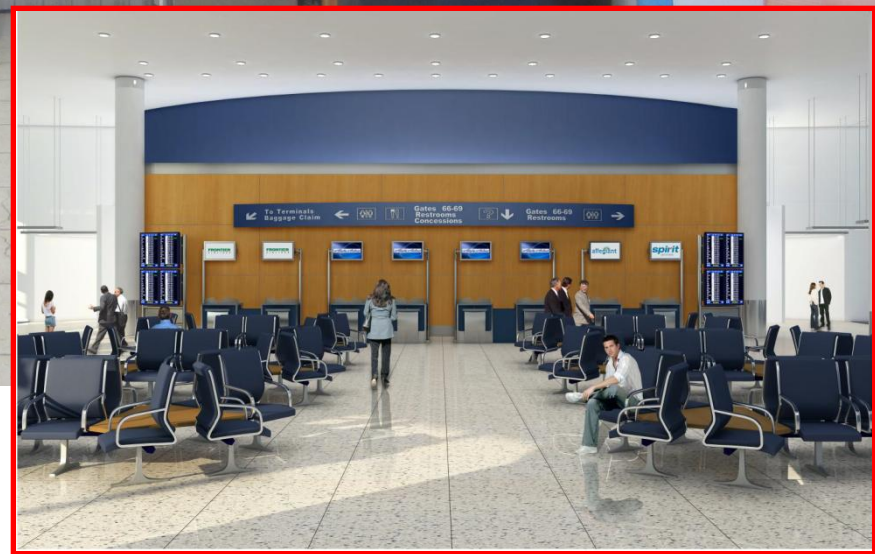
Departure level of south concourse. (June 3, 2011)



CUP Temporary Utility Relocation is complete. Design for new CUP is approximately 60% complete. (May 5, 2011)



Construction underway in Terminal 6 ticketing level.  
(June 6, 2011)



Construction underway in Terminal 6 gate area.  
(June 6, 2011)





Construction underway in Terminal 6 gate area.  
(June 6, 2011)



New baggage claim for Terminal 6.  
(June 6, 2011)



New screening and security checkpoint area under construction at Terminal 6.  
(June 6, 2011)



Some of the thousands of contractors working on the LAX Development Program.  
(June 3, 2011)

# QUESTIONS?