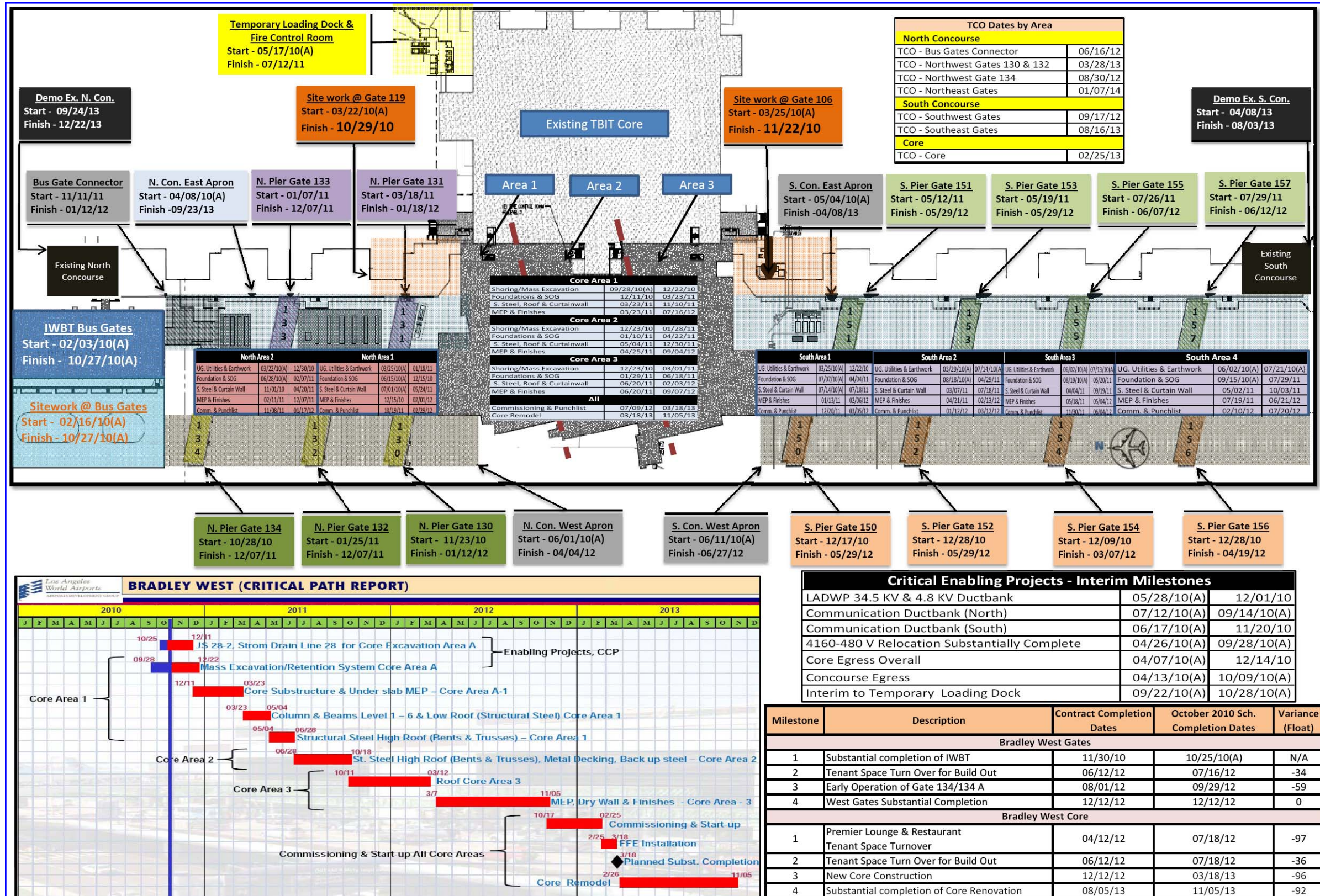
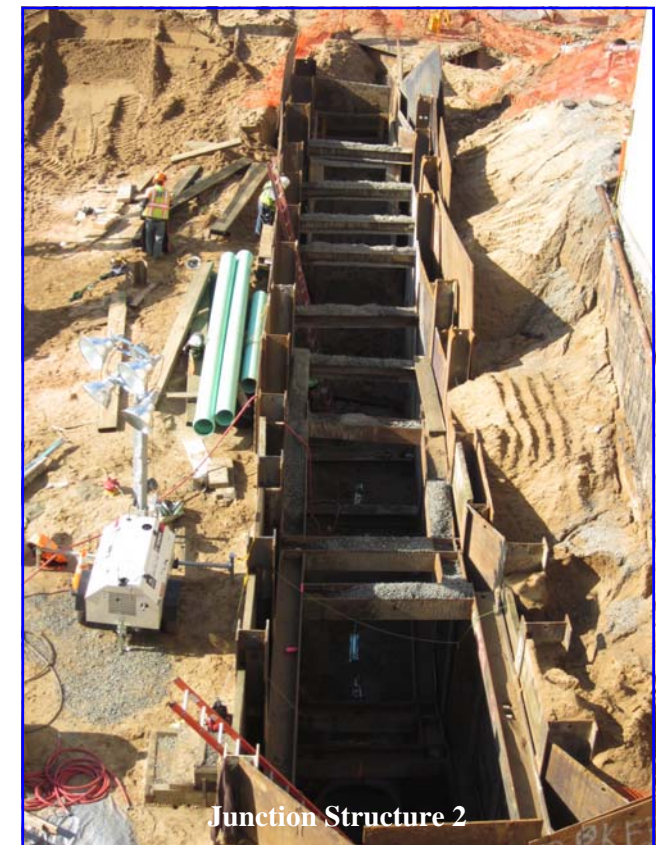


Bradley West Program Schedule



Schedule Notes

- Critical Path Report lower left box: The critical path for the 12/12/12 scheduled opening of Bradley West is the new Central Core, Areas 1, 2 & 3. Completion of the junction structures, these are the underground facilities that house major components of the utilities, continue to be a challenge to complete due to weather and other unforeseen conditions. Junction structure 2, shown below, is a critical path project that needs to be complete to make way for full Core construction.
- Critical Enabling Project - Interim Milestones: These projects were required to make way for future construction or to temporarily solve a problem until the Bradley West Modernization is complete. Most of these critical enabling project - interim milestones have been achieved as noted in the lower right box.



Building Information Modeling (BIM)

