

# TBIT Construction News



## Concourse Emergency East Egress

An important part of the Bradley West Program is to provide a safe environment for the traveling public as well as the airport and airline employees. The current emergency exits from the north and south concourses would exit passengers into the future Bradley West construction site and therefore new emergency paths of egress must be established on the east side.

The sketch below illustrates the Gate 105 east egress design and represents the typical locations of the new exit doors and stairs.

Construction of the north concourse stairs commences the first week of June 2010 and will continue at each gate over the next several months. Construction is not intended to shut down any gate. The pictures below depict the barricades installed at Gates 120 and 121.

### Inside this issue:

Bradley West Program Schedule **2**

System Shutdowns **3**

Construction Photographs **3**

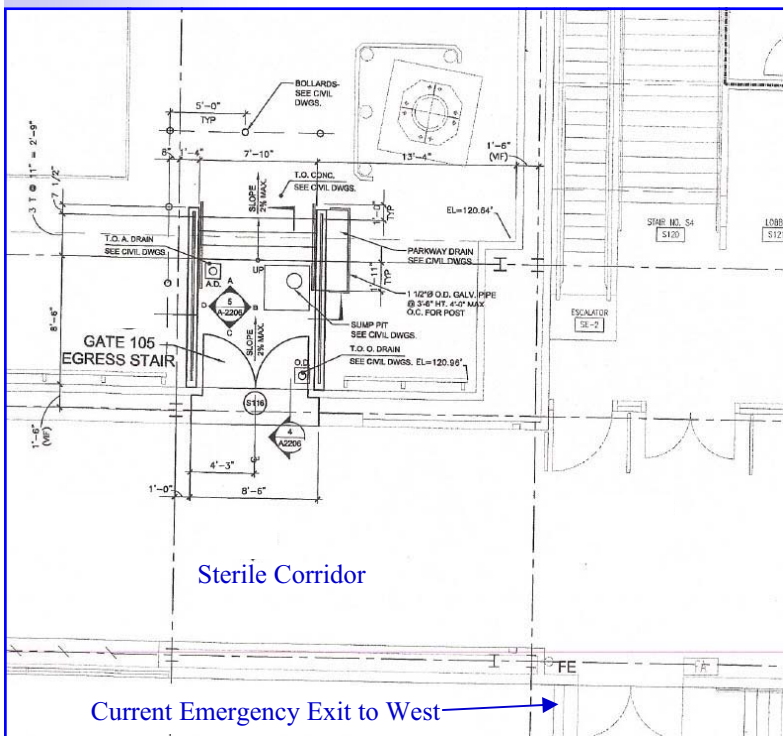
The emergency east egress includes construction of new exit doors in the sterile corridor and metal stairs landing at each gate. Gate and ramp impacts will be minimal as the stairs have been located up against the building and in corners. This is a necessary part of the project to facilitate emergency egress from the building during construction.



Gate 120



Gate 121





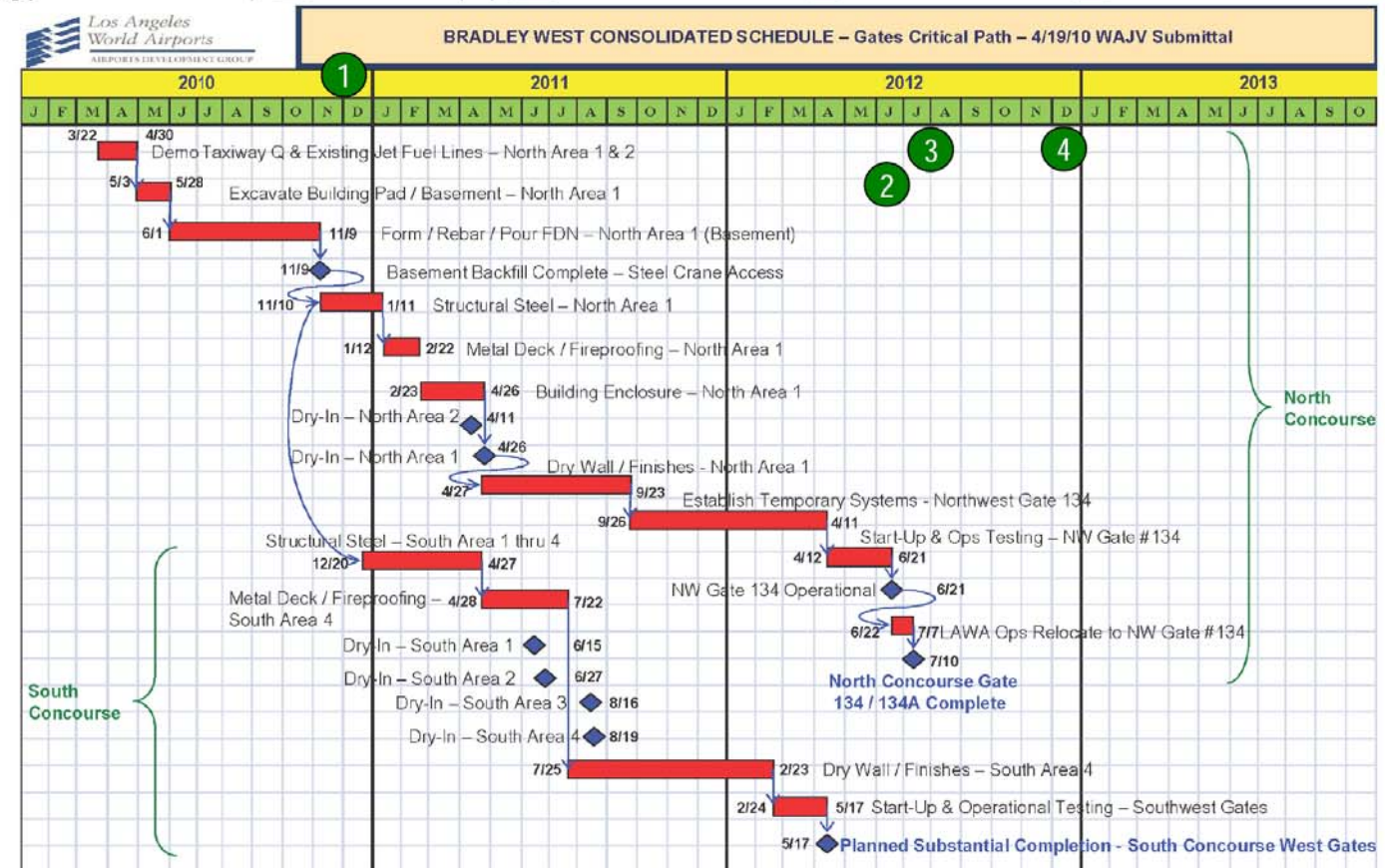
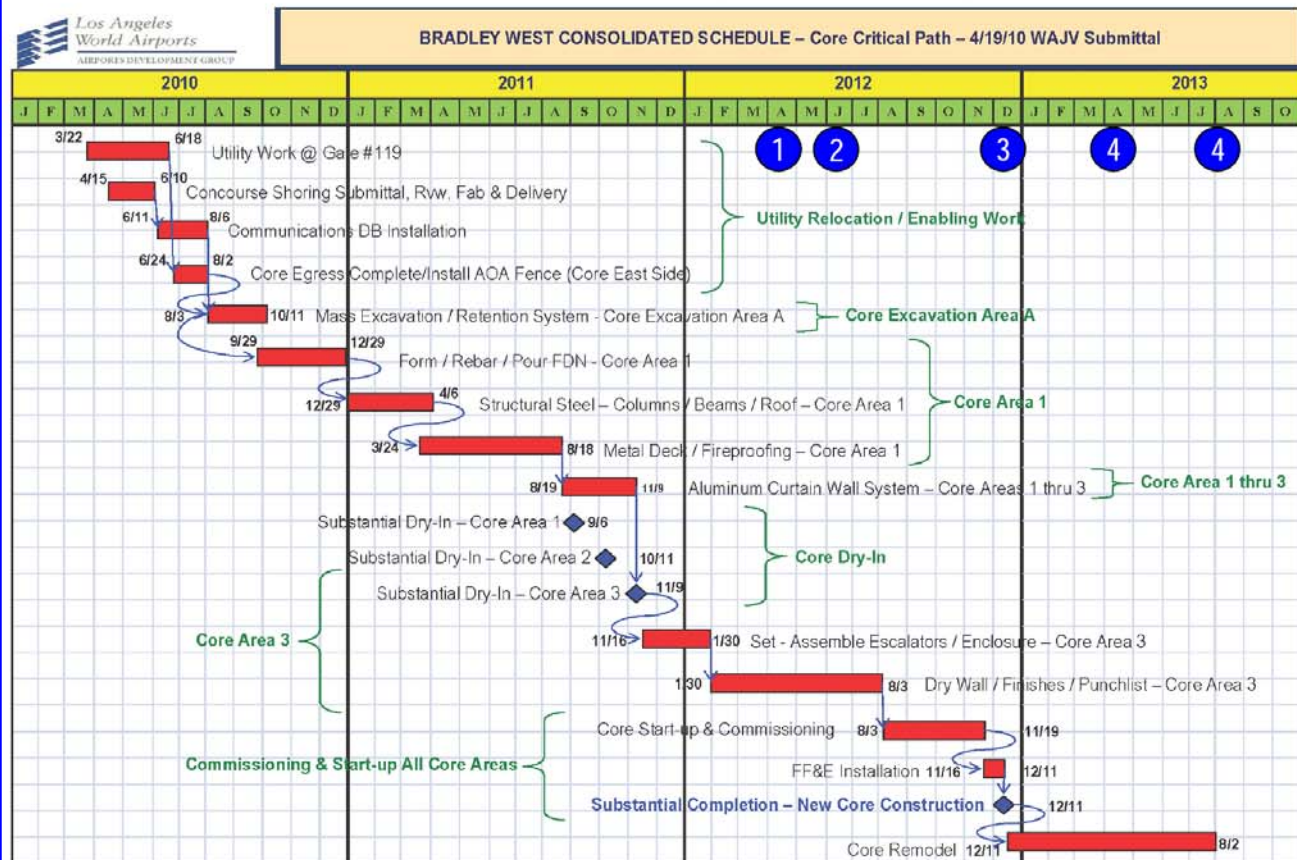
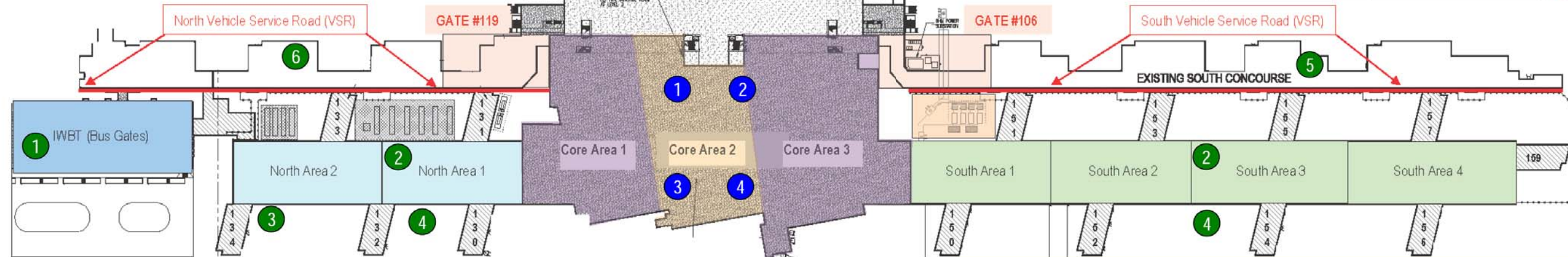
CONTRACT DA-4382 BRADLEY WEST CORE - CHANGE ORDER NO.2		
Milestone	Date/Duration	
1. Premier Lounge & Restaurant Tenant Space Turn Over for Built-Out	8 Months before New Core Construction Substantial Completion	1
2. Tenant Spaces Turn Over for Build Out	6 Months before New Core Construction Substantial Completion	2
3. New Core Construction & Temporary Security Checkpoint Substantial Completion	12/12/2012	3
4. Substantial Completion of Core Renovation & Security Checkpoint	8/5/2013 (Beneficial Occupancy of Security Checkpoint on Mezzanine Level by 4/13/2013)	4
5. TPAR Site Ready for LADWP	146 days from the issuance of an NTP specific to the TPAR scope of work	Not Shown
6. TPAR Substantial Completion	269 days from the issuance of an NTP specific to the TPAR scope of work	Not Shown

Temp Loading Docks

EXISTING TBIT CORE

### BRADLEY WEST CORE & GATES - CONTRACT MILESTONES vs. CONSOLIDATED SCHEDULE 4/19/10

CONTRACT DA-4337 BRADLEY WEST GATES - CHANGE ORDER NO.2		
Milestone	Date/Duration	
1. Substantial Completion of IWBT	11/30/2010	1
2. Tenant Spaces Turn Over for Build Out	6 Months before West Gates Substantial Completion	2
3. Early Operation of Gate 134 / 134A	8/1/2012	3
4. West Gates Substantial Completion	12/12/2012	4
5. Demolition of Existing South Concourse	141 Days from NTP of this Work	5
6. Demolition of Existing North Concourse	161 Days from NTP of this Work	6



This schedule and milestone graphic will become a regular feature of the TBIT Construction Newsletter. While the graphical representation may be overwhelming, there is a lot of useful information and key project dates. Below please find highlights to assist in reading:

→ The charts in the upper left and upper right show key milestones for the Core and Concourses. For instance, the blue circle with the number 1 identifies the new premium lounge spaces will be available for tenant build out approximately 8 months prior to substantial completion and opening of the new building (12/12/12).

→ The drawing in the center of the page outlines the existing TBIT terminal (core), north and south concourses. The colored drawing illustrates the location of the new core expansion (concessions and CBP), concourses, gates and Interim West Busing Terminal (IWBT).

→ The schedules at the bottom provides detail for the Core and Concourse construction. Bradley West opening date is scheduled for 12/12/12. Please note that while the new facility is scheduled to open 12/12/12, demolition of the existing concourses, opening of the east gates and renovation of the mezzanine area in the terminal to consolidate the security check point is scheduled for a third quarter 2013 total project completion.



## System Shutdowns

To make way for the construction of the Bradley West facility, major communication and power duct banks need to be relocated. At this time it appears that the shutdown of these services and impacts of the relocation will be in late July. Advance notice will be provided once details are known because of the potential significant nature of the impact. Investigations of systems and parties affected is on-going. The finalized work plan and shutdown schedules will be closely coordinated with the TBIT community. Additional information regarding shutdowns will be forthcoming.

## Construction Photographs



**LAX  
TEC  
CORP**

LAXTEC Corporation  
380 World Way  
Box S - 18  
Los Angeles, CA 90045  
Phone: 310 - 646 - 9378  
Fax: 310 - 646 - 2981  
SITA: VNYLXCR

Published for LAXTEC by:

**AvAirPros**

### Construction Photographs Clockwise From Upper Left:

- ➔ Interim West Busing Terminal - Concrete Stem Wall
- ➔ Interim West Busing Terminal - Forms & Reinforcing Steel for Concrete Tilt-Up Panels
- ➔ North Concourse Basement Excavation
- ➔ North Concourse Building Pad
- ➔ Jack And Bore Operation - Receiving Pit at Gate 119
- ➔ Jack and Bore Operation - Jacking Pit on West Side of TBIT

*"You don't take a photograph, you make it."*

**--Ansel Adams  
American Photographer**