

Welcome



SCOPING MEETING

LAX Landside Access Modernization Program

Wednesday, June 22, 2016

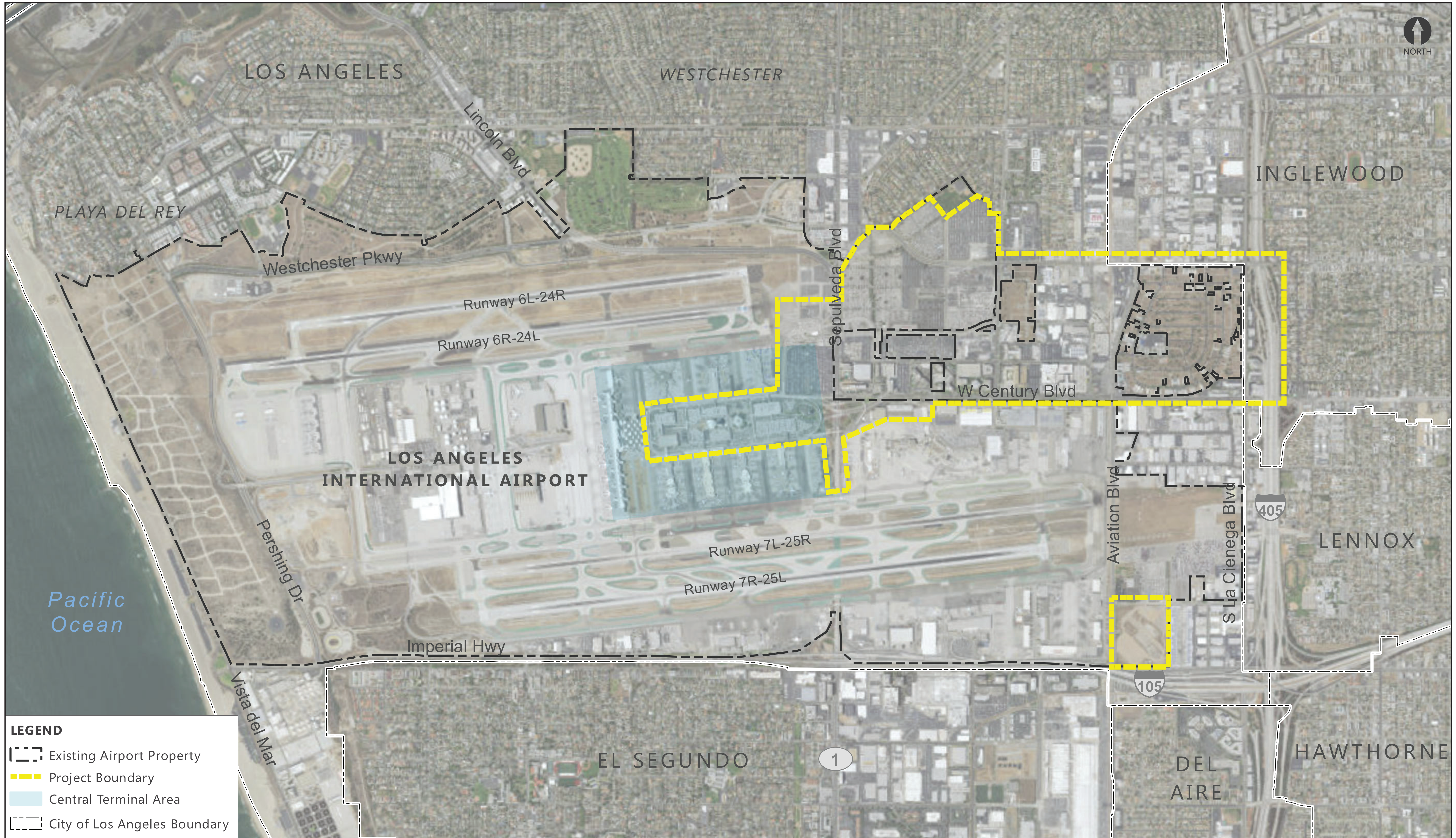
5:00 p.m. to 8:00 p.m.

Los Angeles Fire Station #5

8900 S. Emerson Avenue

Los Angeles, CA 90045

Project Location



What is a Scoping Meeting?



- A scoping meeting provides an opportunity for public and agency comment concerning the scope of issues to be addressed in the proposed LAX Landside Access Modernization Program Environmental Assessment (EA), including:
 - purpose and need for the proposed project
 - range of alternatives to be considered
 - significant environmental issues to be addressed

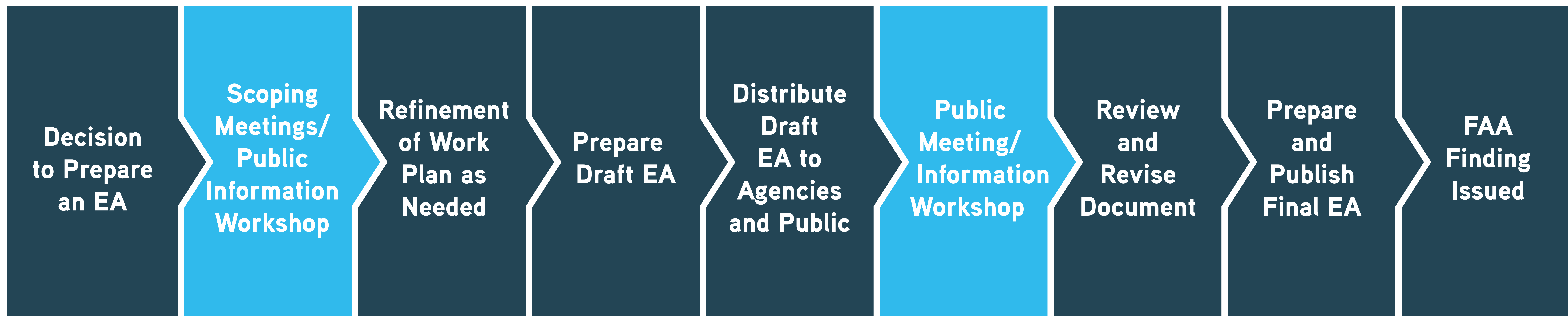
National Environmental Policy Act (NEPA)



- Requires federal agencies to disclose a clear description of potential environmental effects resulting from proposed federal actions and reasonable alternatives to those actions
- Provides information to decision makers to determine whether a proposed project would cause significant adverse environmental impacts
- For the proposed Landside Access Modernization Program EA, the Federal Aviation Administration (FAA) must review the potential environmental effects of the proposed project before it can be approved



**WE ARE
HERE**



Major Project Components



✈ Automated People Mover (APM) System

- Six APM stations, 2.25 miles connecting CTA with new CONRAC, ITF, parking and Metro facilities
- Elevated dual-lane guideway
- Passenger walkways to terminals, parking garages, and ground transportation facilities
- Short wait times (2-3 minutes), 24 hours a day

✈ Consolidated Rental Car Facility (CONRAC)

- Rental car options in centralized location
- Access to major freeways
- Customer service building, parking areas, fueling, and car wash areas

✈ Roadway Improvements

- Access to major freeways and streets
- Enhance roadway network
- Minimize impacts to neighborhood streets

✈ Intermodal Transportation Facilities (ITF)

- Convenient options to avoid traffic bottlenecks in CTA and on Sepulveda Boulevard
- Comfortable parking and waiting areas with concession opportunities

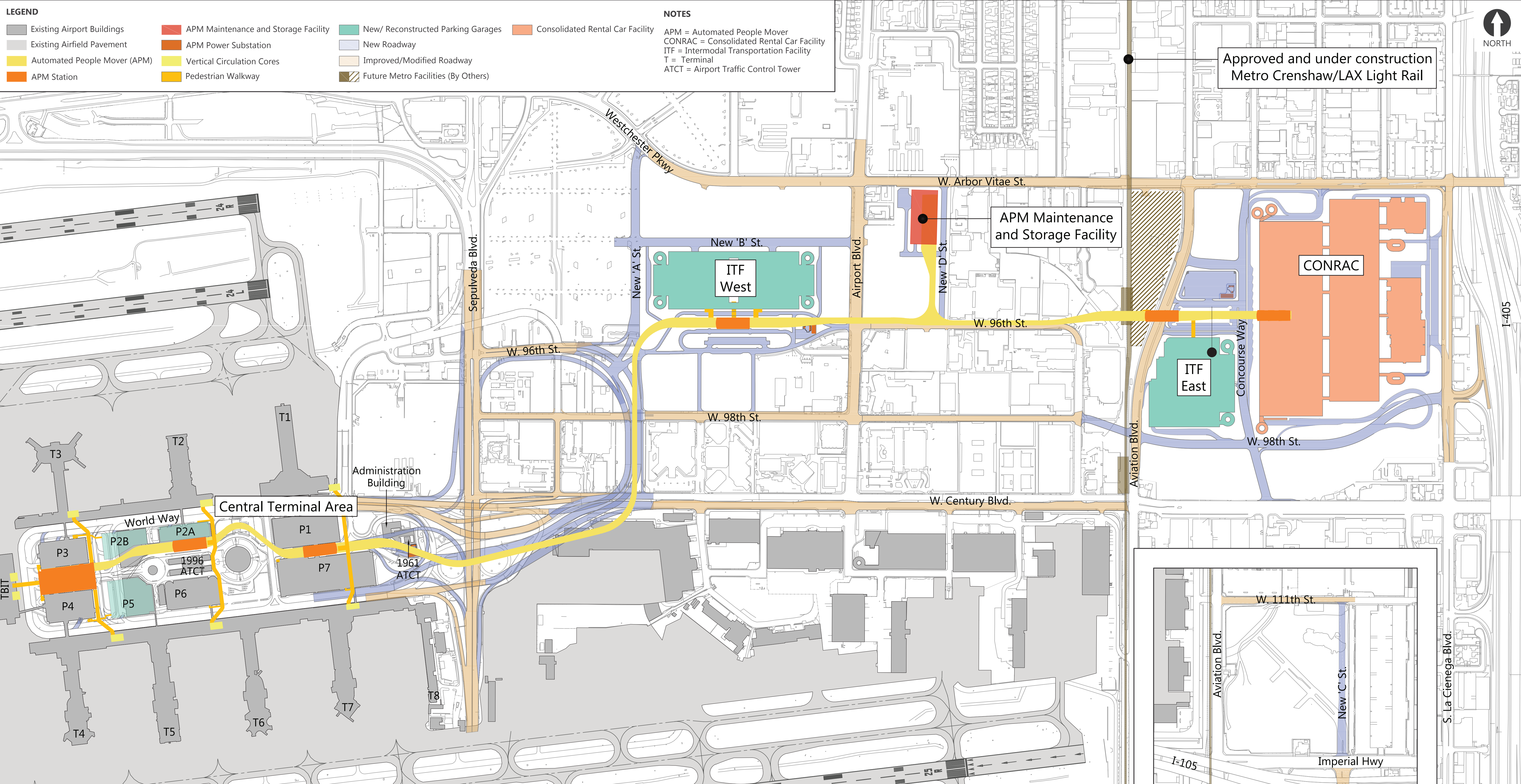
West ITF

- Direct connection to terminals via APM
- Drop off and pick up passengers
- Connections for airport shuttles
- Public and employee parking
- Concessions and flight check-in

East ITF

- Drop off and pick up passengers
- Connection with Metro 96th Street/Aviation Boulevard transit station
- Connections to commercial transit
- Public parking
- Concessions and flight check-in

Project Components



Purpose and Need



Purpose of the Project

- To improve connectivity and mobility for passengers and employees by developing a transportation system that provides time-certain travel options
- To provide easier and more efficient access to rental cars
- To relieve congestion in the CTA and on the surrounding streets

Need for the Project

- Passengers and employees lack convenient access options including a direct connection to public transit
- Congestion in the CTA causes delays affecting local streets and arterials including I-105
- LAX does not have a consolidated rental car facility that provides a convenient and centralized location for airport passengers to rent and return cars

Alternatives Considered



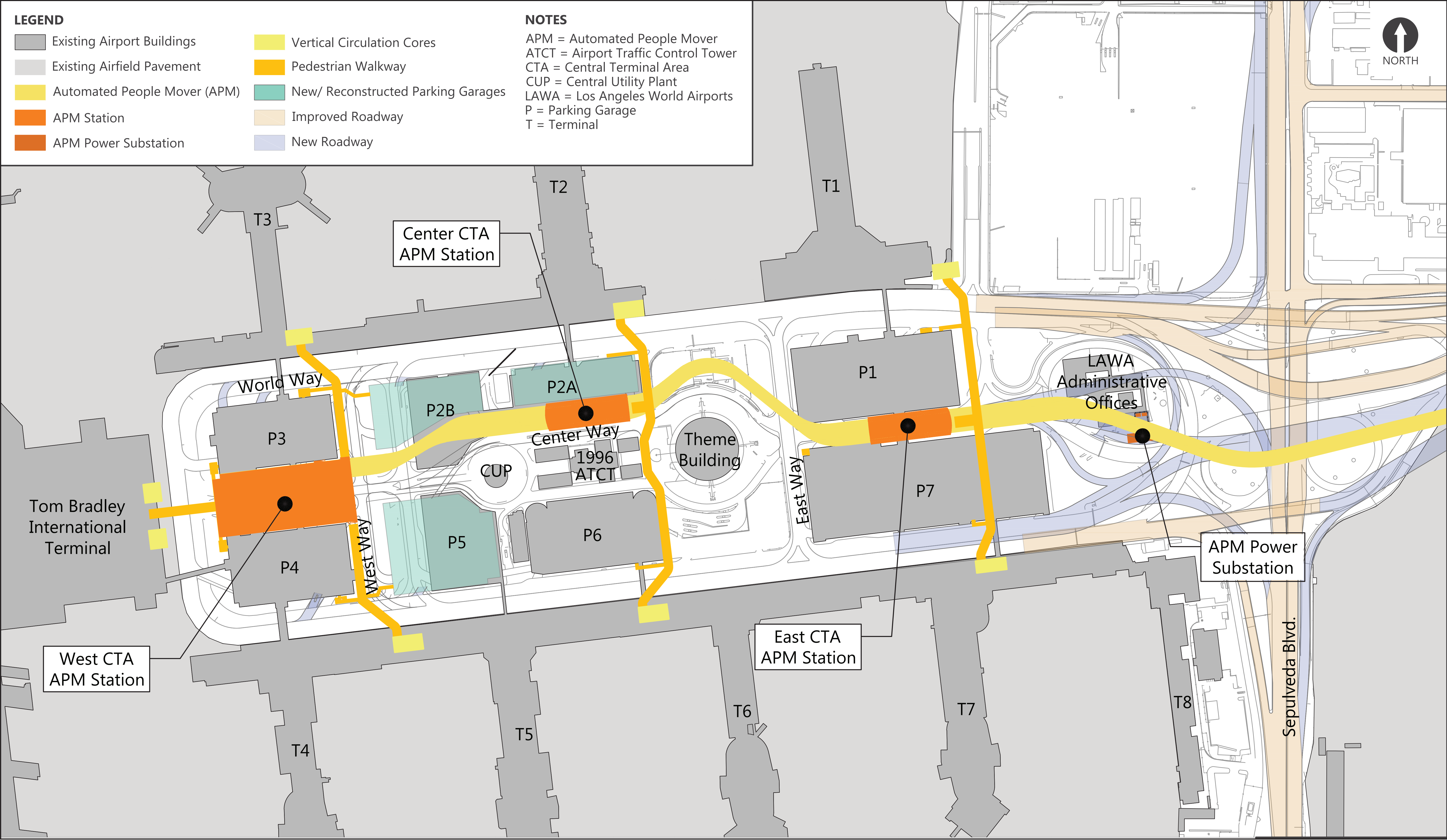
- No Action
- A range of alignments and configurations for:
 - Automated People Mover
 - Consolidated Rental Car Facility
 - Roadway Improvements
- Proposed LAX Landside Access Modernization Program

Environmental Impact Categories

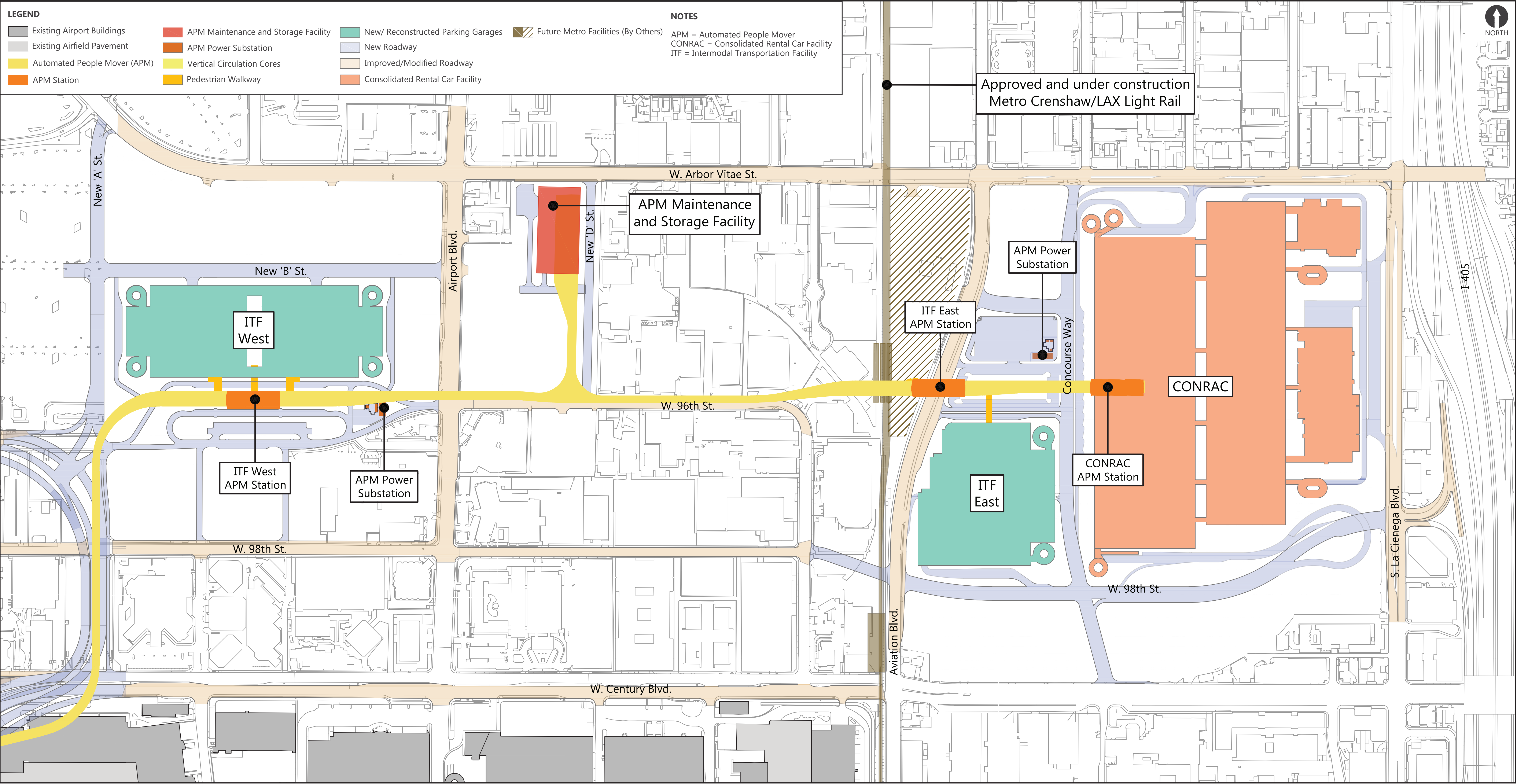


- Air Quality
 - Biological Resources (fish, wildlife, & plants)
 - Climate
 - Coastal Resources
 - Department of Transportation Act Section 4(f)
 - Farmlands
 - Hazardous Materials, Solid Waste, and Pollution Prevention
 - Historical, Architectural, Archaeological, and Cultural Resources
 - Land Use
 - Natural Resources and Energy Supply
 - Noise and Compatible Land Use
 - Socioeconomic Impacts, Environmental Justice, Children's Health and Safety Risks
 - Visual Effects
 - Water Resources
 - Cumulative Impacts
- Resource categories identified in bold text will be studied in detail in the Draft EA*

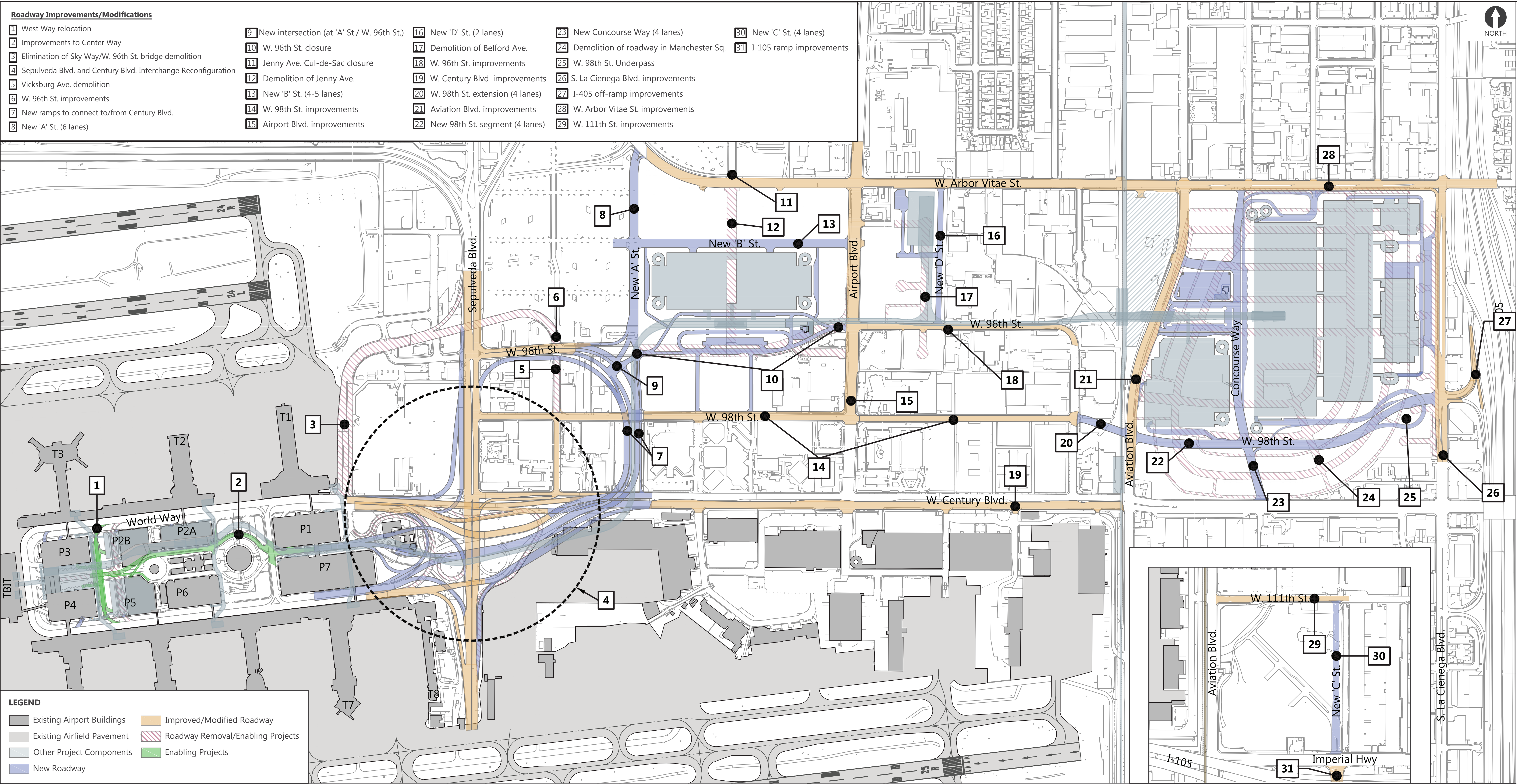
Automated People Mover within the Central Terminal Area



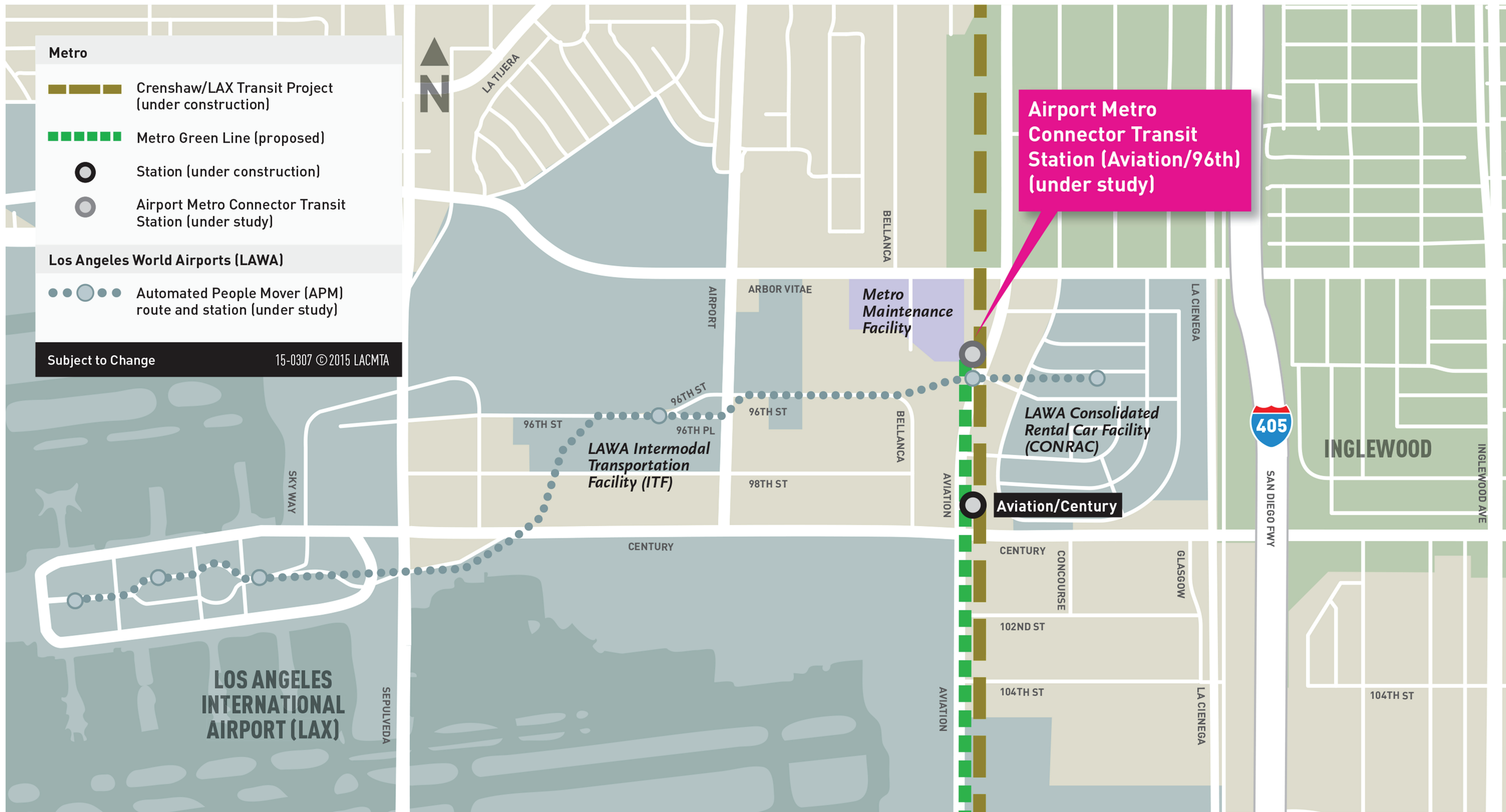
Automated People Mover, Intermodal Transportation Facilities and Consolidated Rental Car Facility



Roadway Improvements



Airport Metro Connector



Next Steps



**Obtain Public and
Agency Scoping
Comments**

Due July 11, 2016

Prepare Draft EA

**Anticipate Release
of Draft EA**

1st Quarter 2017



Public Comments



- Comments can be handwritten on comment forms and submitted at this Scoping Meeting
- Comments can be mailed to:

Ms. Evelyn Quintanilla
Chief of Airport Planning
Los Angeles World Airports
1 World Way, Room 218
Los Angeles, CA 90045
Phone: (800) 919-3766
- For additional information and/or to submit comments, visit www.connectinglax.com
- **Comments must be received by 5:00 pm Monday, July 11, 2016**