

Los Angeles World Airports

Airports Development Program Overview

Presented by:

*Roger A. Johnson, Deputy Executive Director
Airports Development Group*

Economic Development Cabinet

August 18, 2009



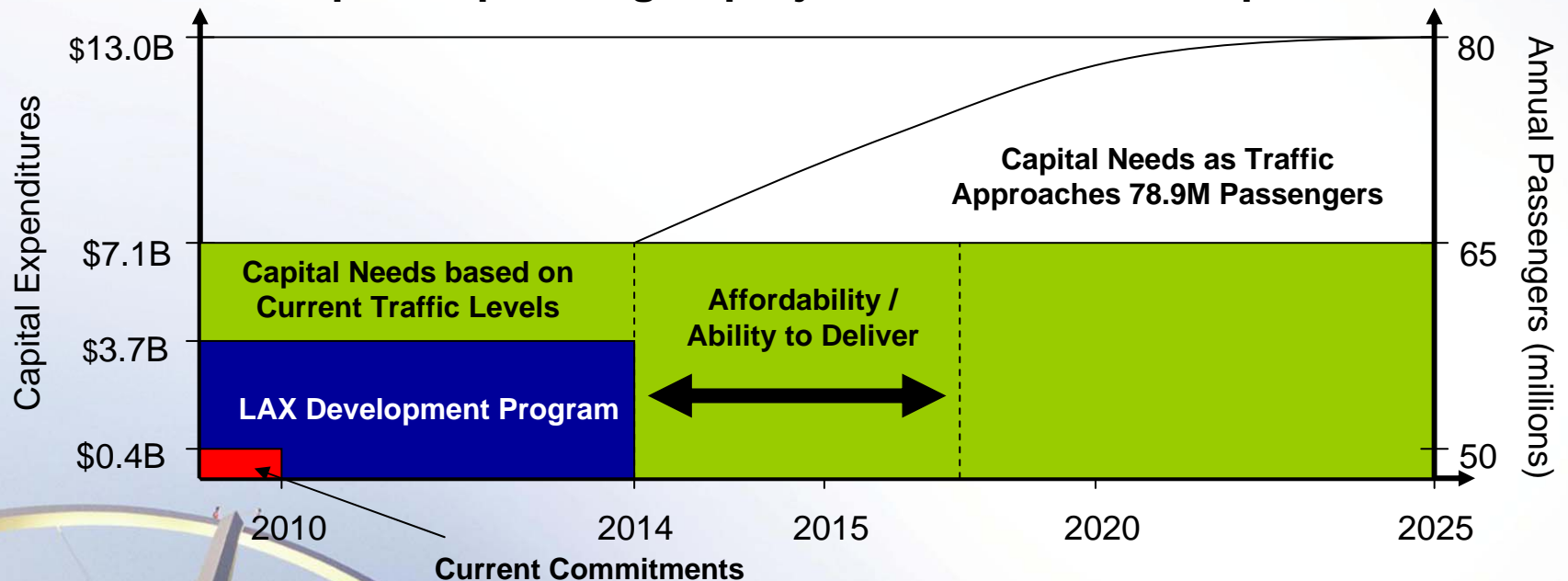
Historical Approach to Capital Planning

- Focused on “Master Plan” resolution to capital needs
- Deferred general capital reinvestment in anticipation of large scale capital improvements that extended 5 to 10 years into the future
- Approach to capital redevelopment not “modular” and could not be paused or accelerated based on actual airport traffic growth
- Lacked alignment with existing business models and financial capability

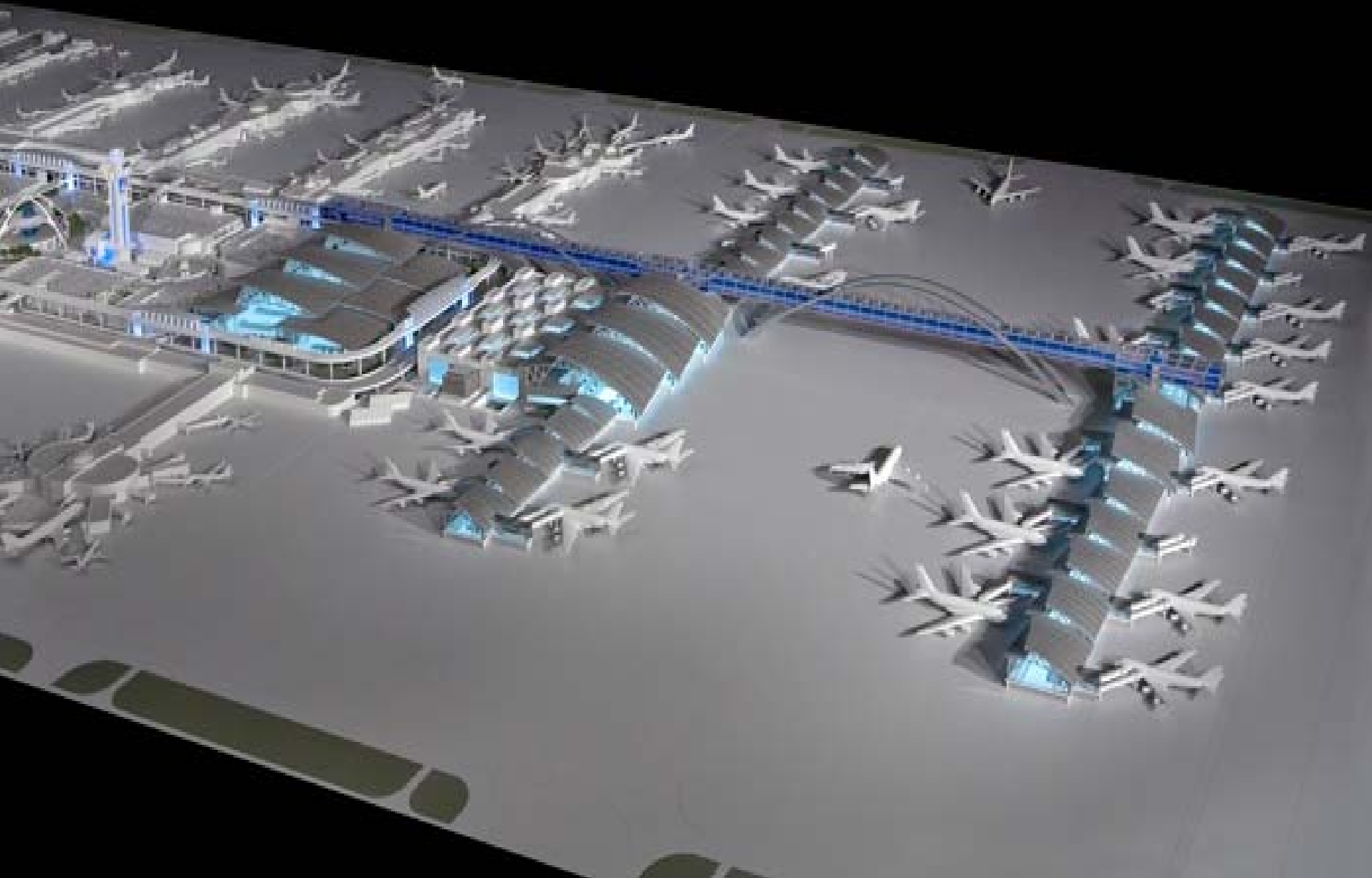


On-Going Infrastructure Needs

- \$7 billion in improvements needed regardless of traffic
- Affordability of additional needs beyond \$7 billion require higher levels of traffic
- Proper sequencing of projects essential to the plan



Architectural Vision



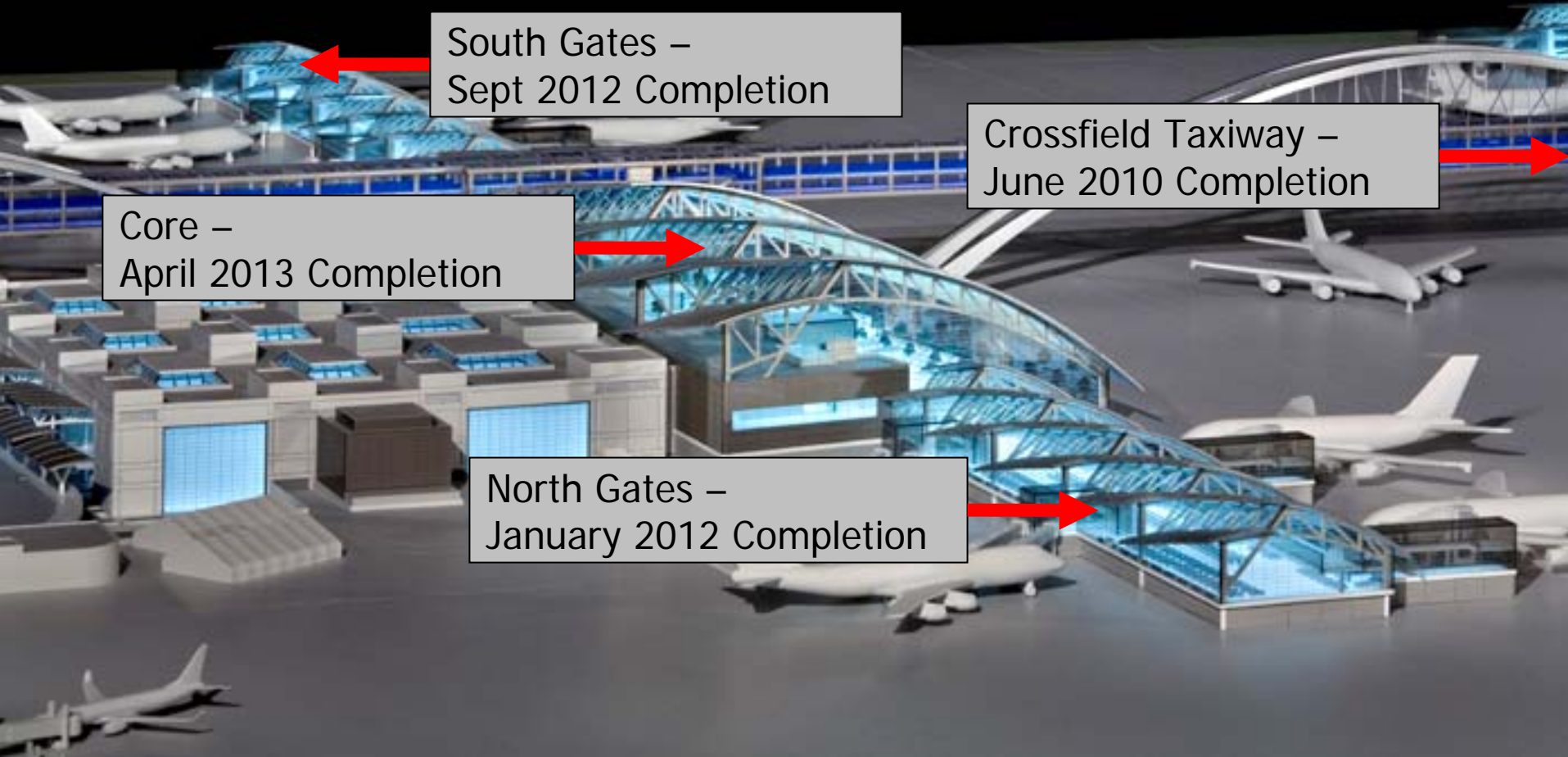
Aerial Link to Midfield Satellite



Central Terminal Processor



Tom Bradley Modernization



South Gates –
Sept 2012 Completion

Crossfield Taxiway –
June 2010 Completion

Core –
April 2013 Completion

North Gates –
January 2012 Completion

Central Terminal Area Redevelopment

Midfield Satellite Concourse

TBIT Terminal and Concourses

Terminal 3 & 4 Connectors

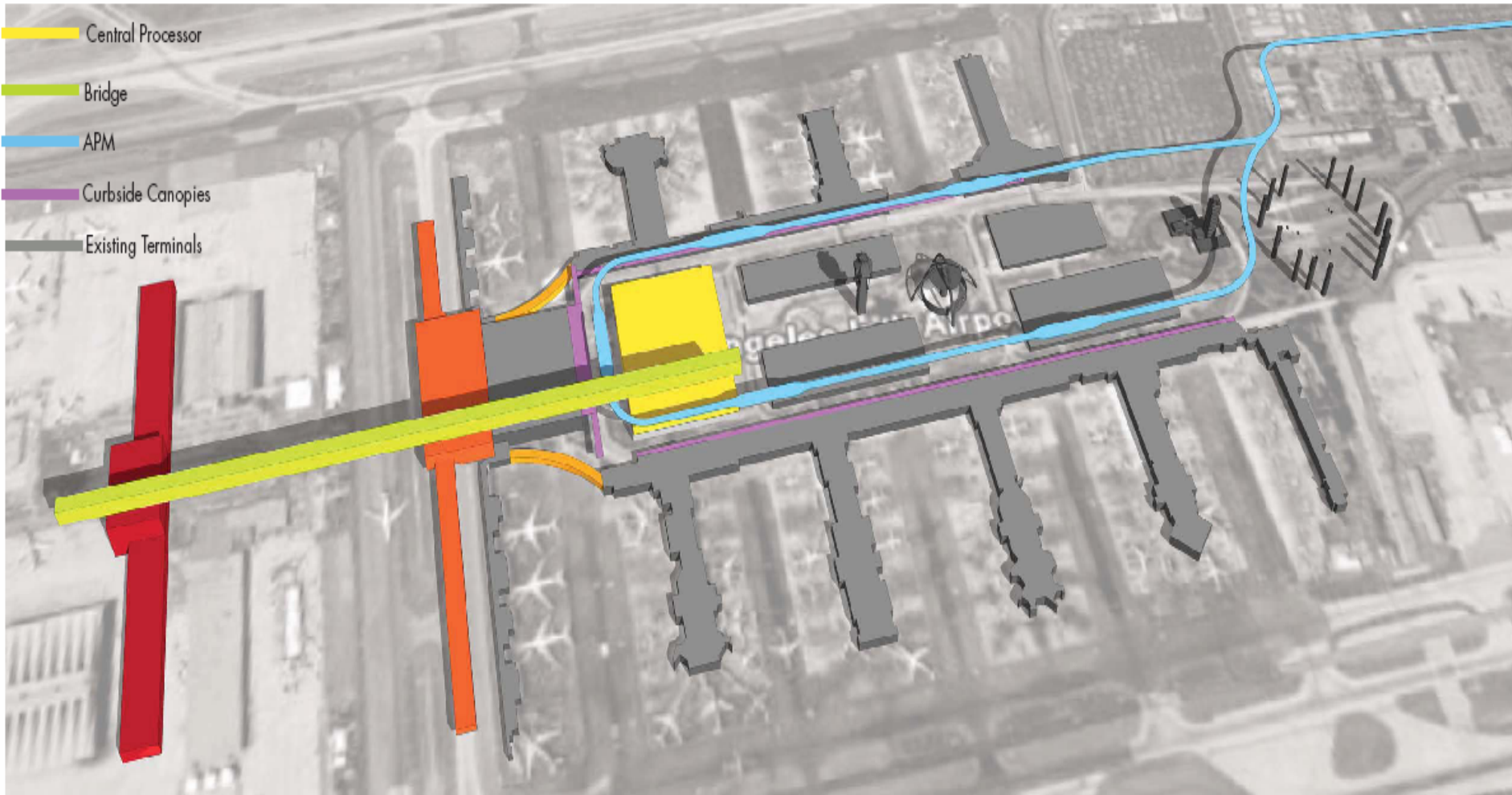
Central Processor

Bridge

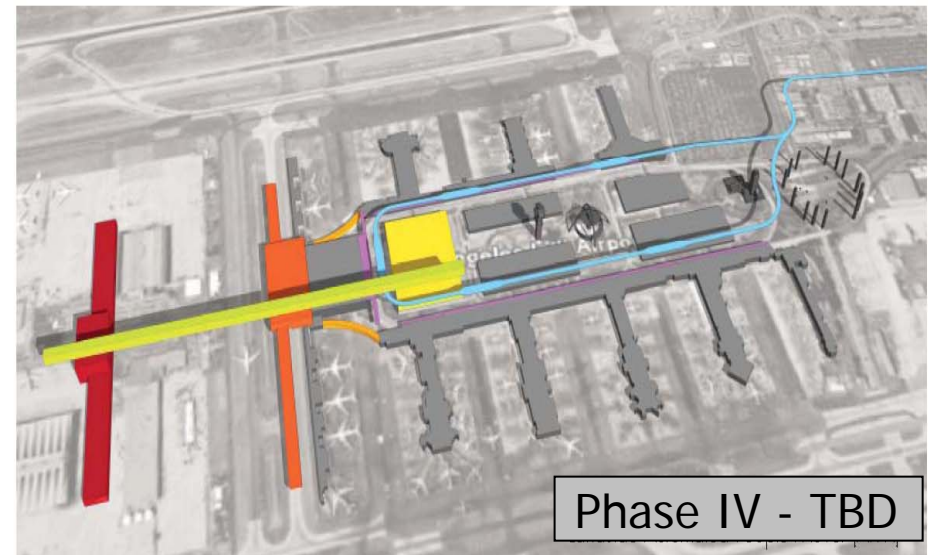
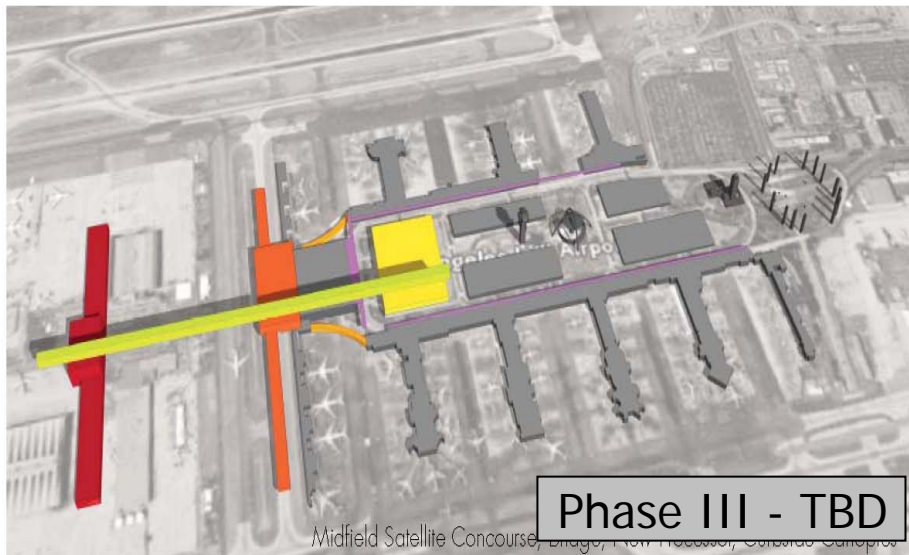
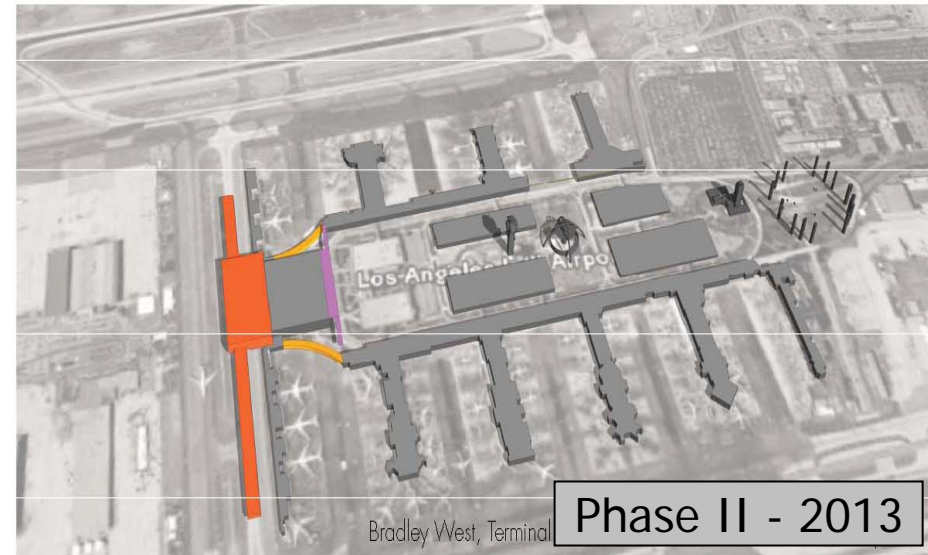
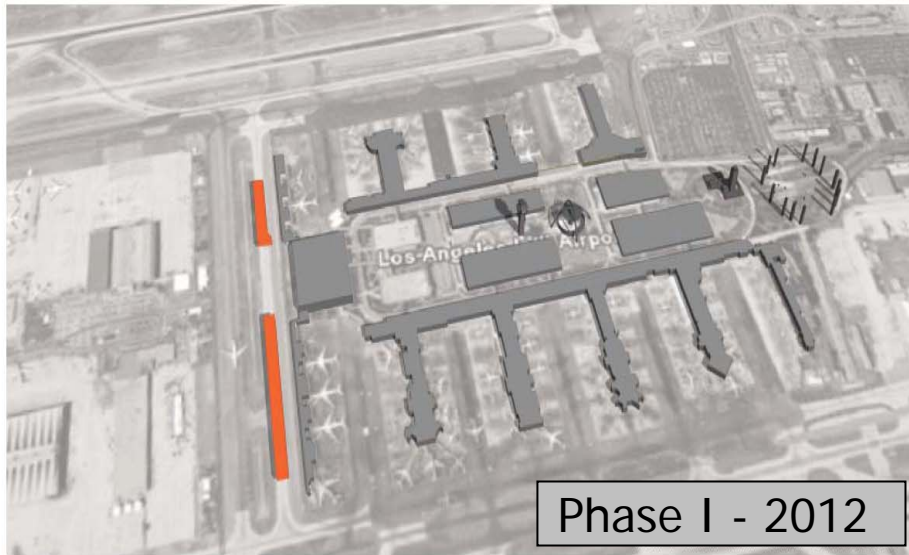
APM

Curbside Canopies

Existing Terminals



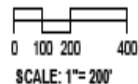
Project Phasing



LAX Development Program
Integrated Program Management Team



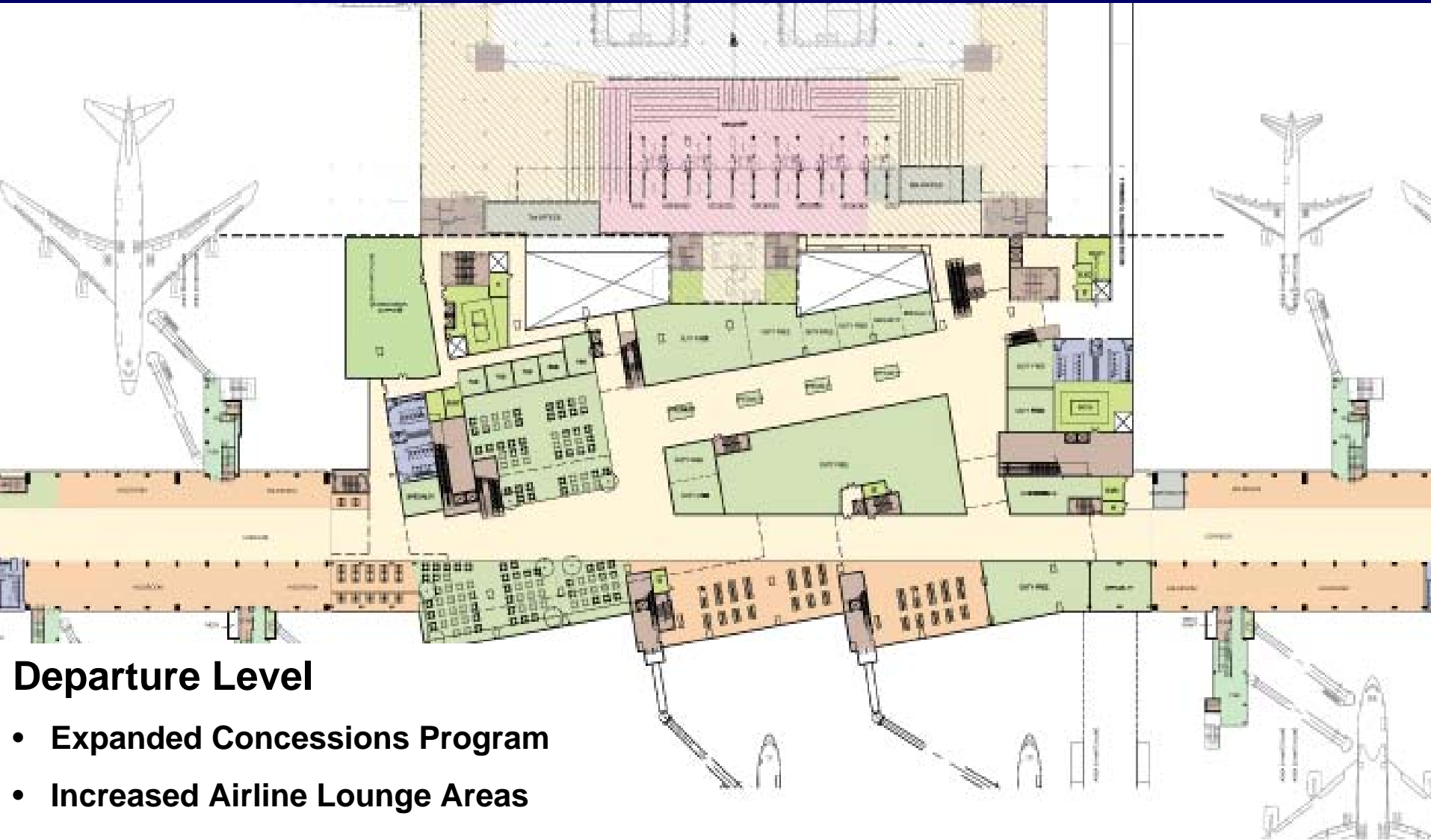
1. WHEN B777 IS PARKED AT GATE 30, GATE 31A BECOMES INOPERATIVE.



Interior View of Concourse



Departure Level Concessions



Departure Level

- Expanded Concessions Program
- Increased Airline Lounge Areas
- Improved security Checkpoint

Bradley West Core Improvements Project



View of New Concession Core

Baggage Claim/Customs Inspection Level

- 6 New Group VI Baggage Claim Devices
- Increased Customs processing Areas
- Improved Meeter / Greeter Area



Inbound Immigration Level

- Expanded Immigration Counters
- Increased Passenger Queuing Areas
- Improved Vertical Circulation



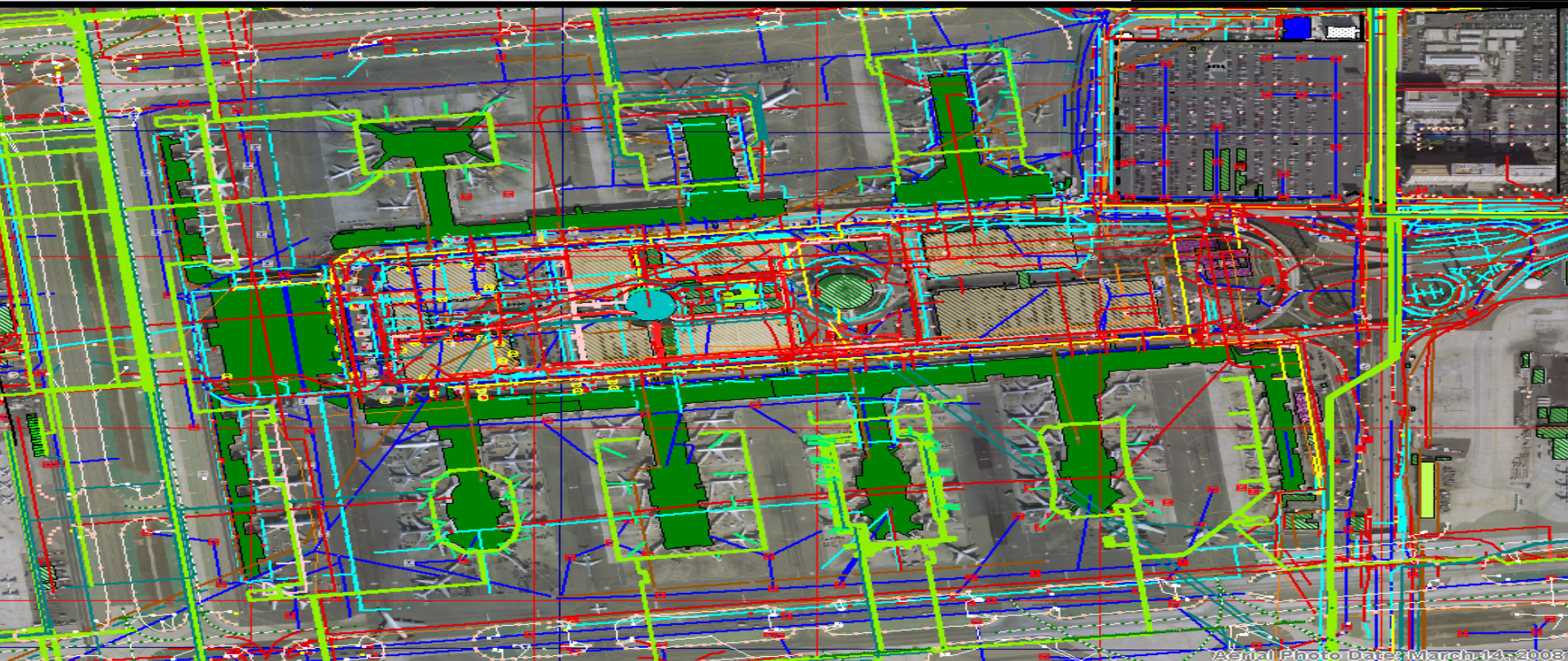
Bradley Project Schedule

North Concourse	Jan 2010 – Jan 2012
South Concourse	Jan 2010 – Sep 2012
Central Core New Construction	Apr 2010 – Apr 2013
Demolition of Exist. Concourses	Sept 2012 – Mar 2014



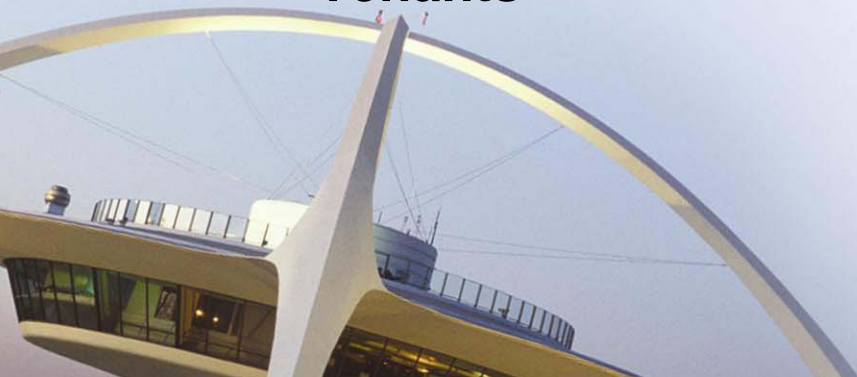
Replacement of Central Utility Plant (CUP)

- Existing CUP was built in the late 1950's
- High Operation and Maintenance Costs
- Does not meet current cooling demand



Sustainable Planning, Design, and Construction Guidelines

- The Guidelines are a tool for LAWA to affect its Sustainability Policy
- 137 performance standards (Required and Optional)
 - 97 – Planning & Design
 - 40 – Construction
- Applicable to all project types:
 - General Construction & Maintenance
 - Civil
 - Buildings
 - Tenants



Sustainable Planning, Design, and Construction Guidelines

Sample Sustainable Planning & Design Guidelines:

- Project Management
- Sustainability Specs
- Airside Planning
- Landside Planning
- Site Selection
- Stormwater Management & Erosion Control
- Landscape Design
- Water Efficiency & Conservation

Sample Sustainable Construction Guidelines:

- Emission Inventory & Mitigation
- Materials Conveying
- Landscape Maintenance
- Construction Health & Safety
- Construction Roadways
- Social Responsibility
- Additional Construction Elements

MBE/WBE Goals

Crossfield Taxiway – 15.4%

**Bradley West Project
(Preconstruction) – 14%**

**Bradley West Project
(Construction) – 20%**



Economic Contribution

\$63.7 Billion – LAX's Direct impact on economy

48,778 – Number of jobs directly involved in design and construction

102,244 – Number of indirect jobs resulting from the construction



LAX Enplanements: 1994-2008

YEAR	DEPARTING	ARRIVING	TOTAL
1994	25,812,087	25,238,188	51,050,275
1995	27,234,353	26,674,870	53,909,223
1996	29,162,942	28,811,617	57,974,559
1997	30,313,688	29,828,900	60,142,588
1998	30,826,859	30,388,853	61,215,712
1999	32,298,944	31,980,627	64,279,571
2000	33,836,077	33,467,105	67,303,182
2001	31,007,930	30,598,274	61,606,204
2002	28,181,481	28,042,362	56,223,843
2003	27,544,606	27,438,232	54,982,838
2004	30,343,873	30,360,695	60,704,568
2005	30,649,324	30,840,074	61,489,398
2006	30,500,130	30,540,936	61,041,066
2007	31,244,261	31,194,322	62,438,583
2008	29,930,985	29,884,661	59,815,646



Informational Resources



For more information, visit LAWA's website:

www.LAWA.aero