

Construction Hot Topics

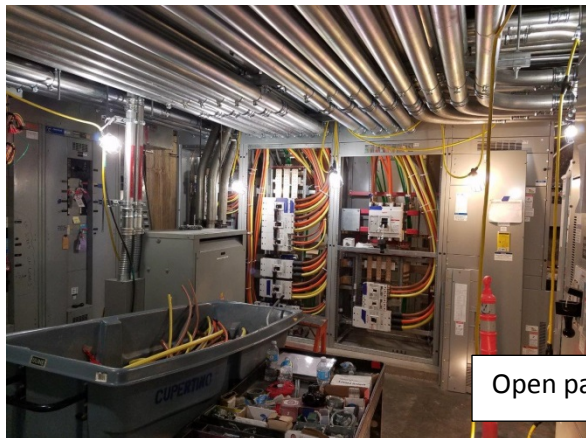
Week of: September 17, 2017 – September 23, 2017

Many items featured in the weekly Construction Hot Topics are activities that can be summarized fairly briefly and with good visuals, regardless of the phase or extent of the project taking place. Other projects are less tangible but have far reaching components nonetheless. An example of this is the Electrical Upgrade that has occurred throughout Terminal 2. Because this long-term project was so extensive but elusive to capture in pieces, a more detailed synopsis of it is provided here this week.

1. Terminal 2: Electrical Upgrade

- The T2 Electrical Upgrade completed significant renovations, upgrades, and replacement to the ageing Terminal 2 electrical systems and equipment, many 30 to 40 years old, resulting in improved reliability of normal electrical service, while also providing increased emergency and standby power capacity. The Notice to Proceed for this CGMP was issued on February 3, 2014 to Turner Construction and had an original contract value of \$71,870,400.
- The most visible highlights of the project include the installation of a new 500 kilowatt (kW) Emergency Generator and two new standby generators with generating capacity of 2000 kW. The project also included the replacement of 239 electrical panels and switchgear sections, the replacement of new electrical gear in 30 mechanical and electrical rooms, installation of new IT Racks, cabinets and branch infrastructure to support three new IT Rooms, and the installation of a new pre-action fire protection system in the terminal's main electrical room as backup for the existing FM-200 System.
- During the project, Terminal 2 had the second largest international flight operation at LAX, so coordination of all construction activities and utility shutdowns required significant effort with Operations, the SCC, TBITEC, CBP, Airport Police, LAWA Facilities Maintenance and the concessions operation. Approximately 1,000 utility shutdowns were conducted throughout the project duration.
- The project successfully worked through two significant operational impacts with the LA Special Olympics in 2015 and the Delta Airlines Terminal relocation of 2017 while still meeting all project milestones and is presently working towards the planned final completion of January 2018. This success required concerted coordination among many groups: the PDG Project Management Team, the T2 airline and tenant community, Turner Construction, and Cupertino Electric.

Two new standby generators



Open panels

(continued on next page...)



LAX IS HAPPENING™

📞 LAX Construction Hotline: 310-649-5292

🐦 @flyLAXairport

📘 LAInternationalAirport



Open panels



Conduit delivery
via the airside

2. Curbside: TSA Pre-check

- Terminal 6's curbside TSA Pre-check office has closed (left image below). Currently, there is one TSA Pre-check office at LAX. It is located in Terminal 1 on the baggage claim level adjacent to the Info Booth (right image below). There is a possibility that an additional office will open in Terminal 7, but that is not yet confirmed. Any guests seeking TSA Pre-check registration should be directed to Terminal 1.



LAX IS HAPPENING™

📞 LAX Construction Hotline: 310-649-5292

🐦 @flyLAXairport

📘 LAInternationalAirport