

Construction Hot Topics

Week of: July 9, 2017 – July 15, 2017

1. Central Terminal Area: Arrivals

- Shovels are officially in the ground for the Landside Access Modernization Program (LAMP) as potholing work has begun along Center Way. This work is part of a scope known as LAWA Utilities and LAMP Enabling Project (LULEP), which involves surveying and potholing many utility locations along the future path of the automated people mover (APM).
- The activity is taking place on Center Way between World Way South and Sky Way, and it occurs on a nightly basis between 11:30pm – 8am; nighttime work is pictured below. Various portions of Center Way will be closed nightly, but access along Center Way will be maintained.



2. Terminal 7: Concourse

- Terminal 7's men's restroom and family restroom along the north end of the concourse, adjacent to the Duty Free Store, are closed for renovations through October. Finishes will be similar to the newly opened women's restroom at the north-most part of the Concourse near Gate 71A.
- Wayfinding is posted on the restroom barricade to direct guests to the next closest men's restroom and nursing room.



LAX IS HAPPENING™

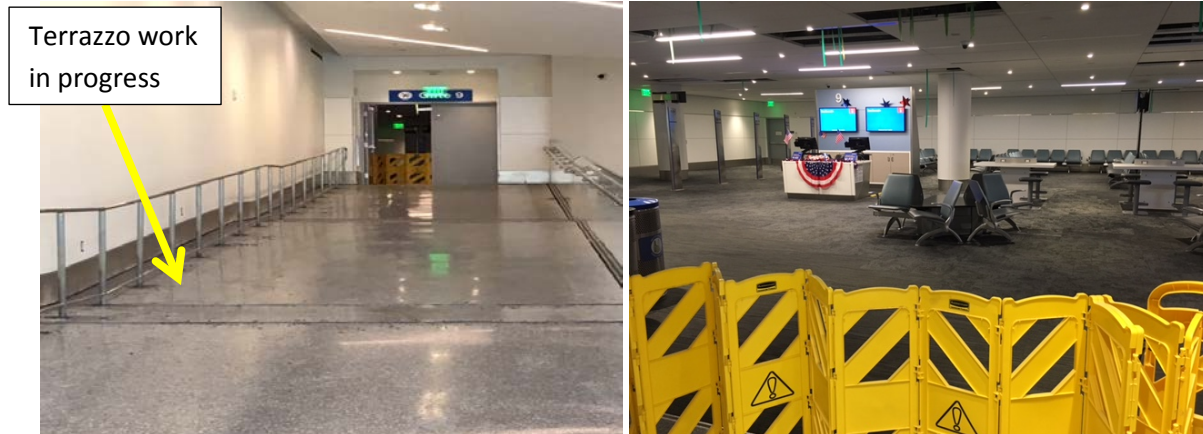
📞 LAX Construction Hotline: 310-649-5292

🐦 @flyLAXairport

📘 LAInternationalAirport

3. Terminal 1: Concourse, Gate 9

- Terminal 1's Gate 9 is currently closed through July 25 for terrazzo floor work along the ramp leading to Gate 9.



4. Ancillary Areas: Flight Path Museum

- Portions of the Flight Path Museum's sidewalks are undergoing ADA improvements. The main entrance is closed, as a result of the work, but the side entrance remains accessible for entry/exit (left image). The barricades remain in place 24/7, but the work is conducted at night from 11pm – 8am (right image), and is expected to complete at the end of July.



LAX IS HAPPENING™

LAX Construction Hotline: 310-649-5292

@flyLAXairport

LAInternationalAirport