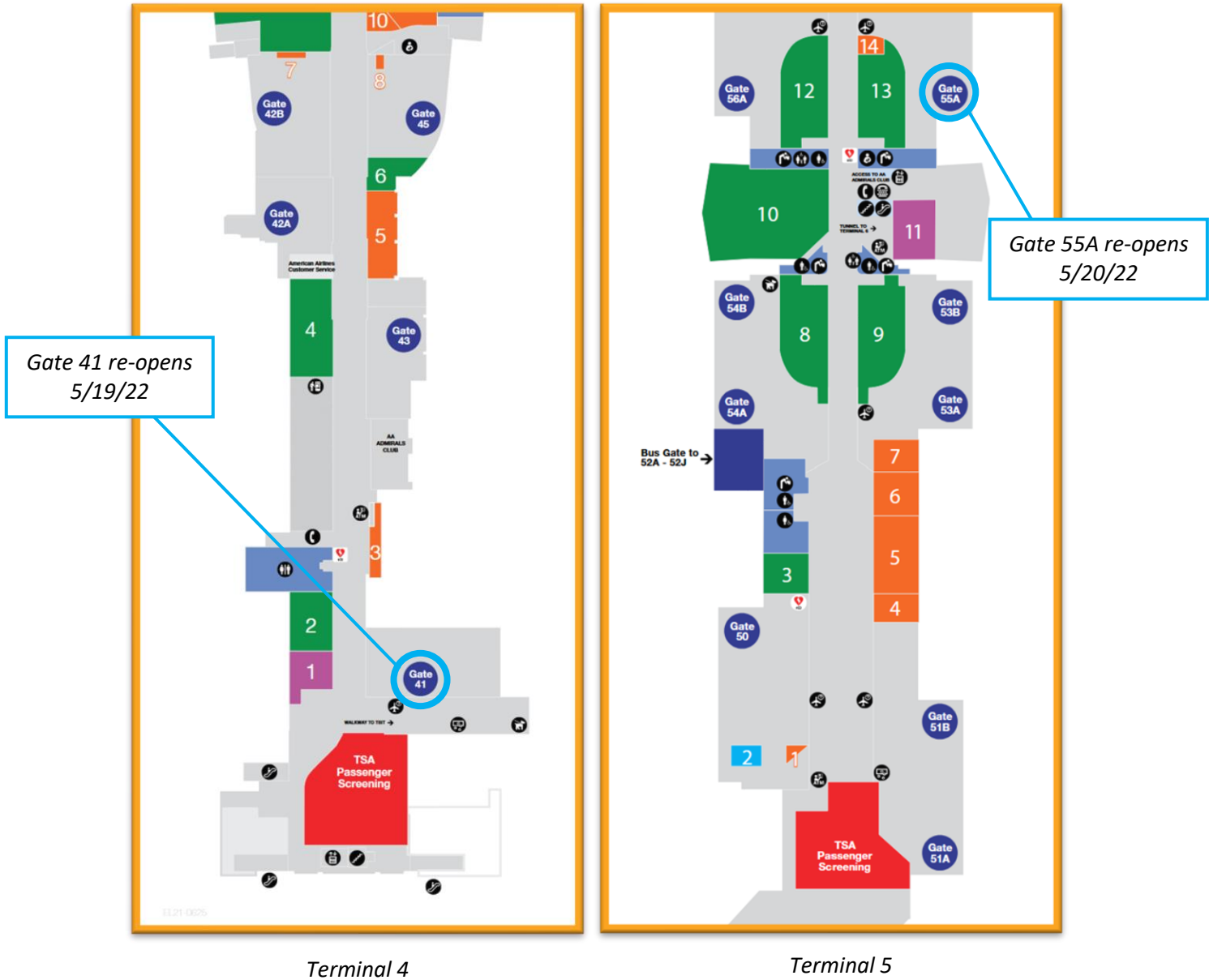


Construction Hot Topics

Week of May 16, 2022

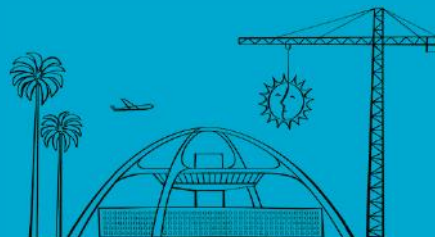
1. Airline Gate Changes: Terminals 4 & 5

- Airline Gate 41 in Terminal 4, which closed early March 2022, is scheduled to re-open this week on Thursday, May 19
- Airline Gate 55A in Terminal 5, which closed late February 2022, is scheduled to re-open this week on Friday, May 20; Gate 55B is scheduled to re-open later this month
- Watch Construction Hot Topics for information on gate closures and scheduled re-openings



Change is in the Air(port).

LAX WAY BETTER. REALLY.



Construction Hot Topics

Week of May 16, 2022

2. Terminal 5.5: Construction Updates

- Construction is ongoing for the Terminal 5.5 Core, the building that will connect Terminals 5 and 6 as well as the terminals to the Automated People Mover
- In addition to construction of the terminal building, the APM project is currently constructing the pedestrian bridge that will span to the future Center CTA Station
- On the Departures Level, the innermost drop off lane is being used as a temporary pedestrian walkway to route pedestrians around core construction
- On the Arrivals Level, various lanes are restricted daily and nightly to facilitate core and pedestrian bridge construction
- Watch Construction Hot Topics for highlights of changes coming to the Terminal 5.5 area in the coming months

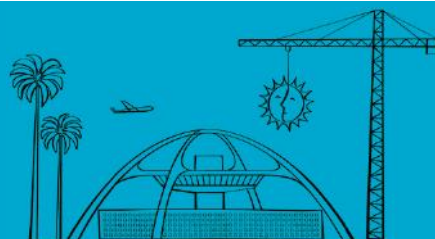


Construction of the Terminal 5.5 Core Building continues to make great progress

Pictured above is the Departures Level drop-off lane conversion to a temporary pedestrian walkway as well as the APM Pedestrian Bridge on the left

Change is in the Air(port).

LAX WAY BETTER. REALLY.

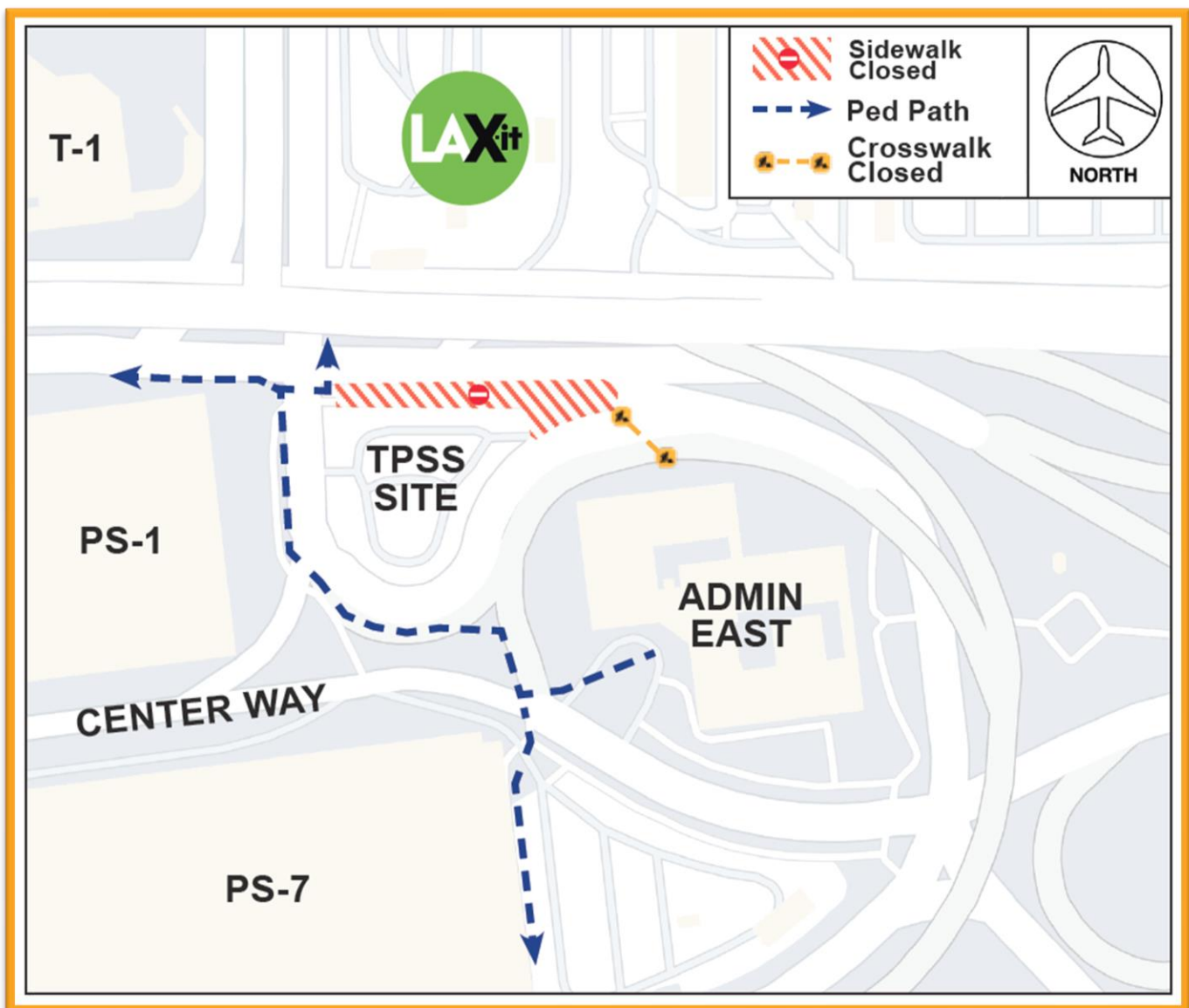


Construction Hot Topics

Week of May 16, 2022

3. [EXTENDED] Sidewalk Restrictions: World Way North near LAX-it

- In early April 2022, the APM project closed the sidewalk per the illustration below to perform civil improvements north of the Traction Power Substation (TPSS)
- Last week, Construction Hot Topics reported this work and associated closures were scheduled to complete on Sunday, May 15; this work has since been extended and is now scheduled to complete by Tuesday, May 31
- Until the closure is removed, pedestrian should follow all posted detour routes and use caution when travelling near construction areas
- The TPSS is where electricity will be converted into the necessary current, voltage and frequency needed for the APM



Change is in the Air(port).

LAX WAY BETTER. REALLY.

