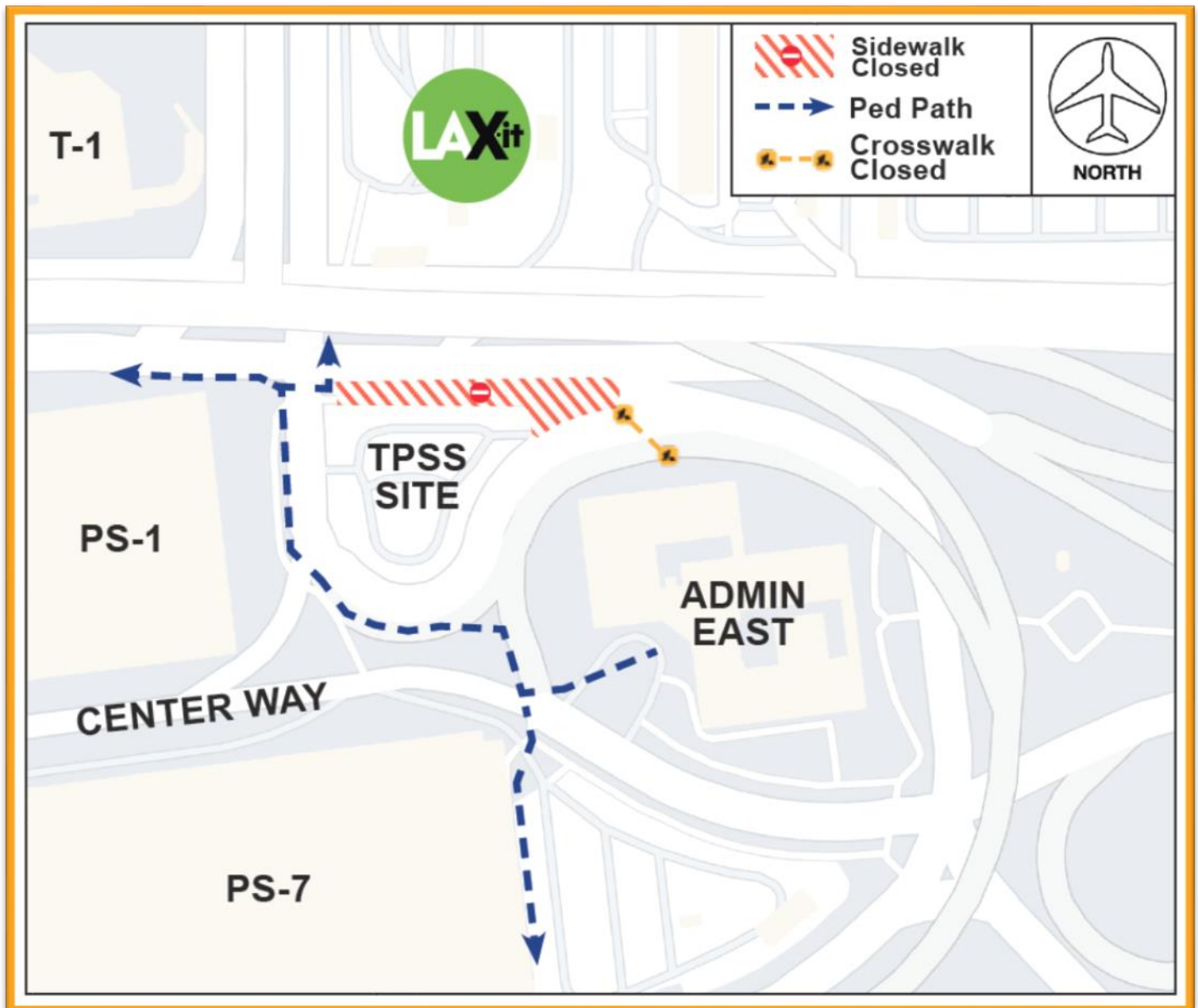


Construction Hot Topics

Week of April 4, 2022

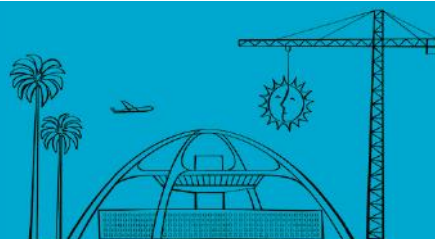
1. Sidewalk Restrictions: World Way North near LAX-it

- The APM project will close the sidewalk along the south side of World Way North, illustrated below, to perform utility and restoration work north of the Traction Power Substation (TPSS)
- The sidewalk will be closed continuously (24/7) beginning Monday, April 4 through Sunday, May 15, 2022
- Pedestrians will need to follow the LAX-it path for access to and from Admin East; the crosswalk north of the Executive Parking Lot will be closed 24/7 for the duration of this activity
- The TPSS is where electricity is converted into the appropriate current, voltage and frequency needed for the APM



Change is in the Air(port).

LAX WAY BETTER. REALLY.

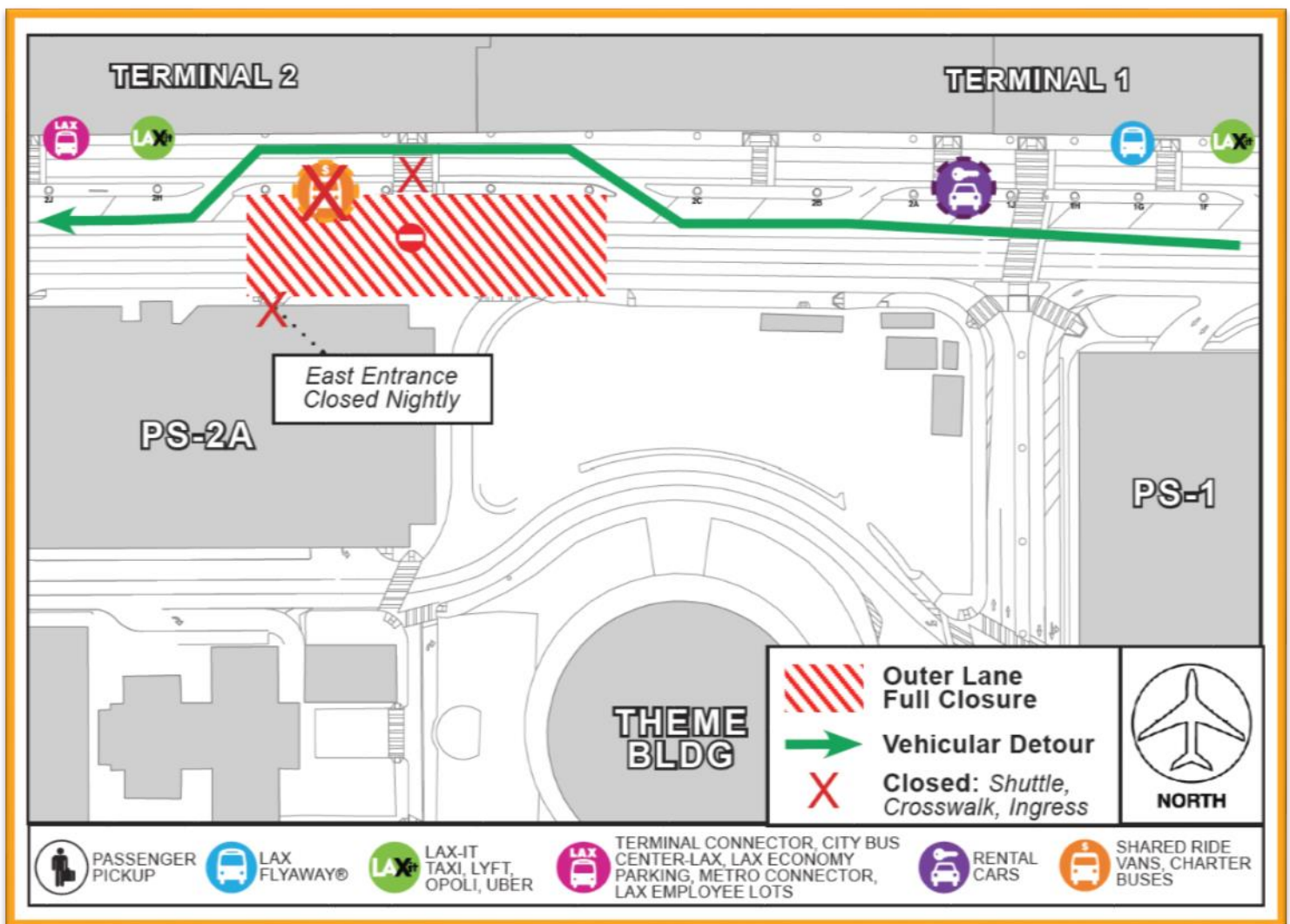


Construction Hot Topics

Week of April 4, 2022

2. Terminal 1.5: Pedestrian Bridge

- A full closure of Arrivals Level Outer Lanes at Terminal 1.5, illustrated below, is scheduled overnight Monday, April 4 to Tuesday, April 5 and overnight Tuesday, April 5 to Wednesday, April 6, to remove the shoring tower and K-rail from the construction area
- During nightly closures, all traffic will be detoured to the Inner Lanes around construction
- The crosswalk and eastern ingress to Parking Structure 2A will be closed, along with the Shared Ride Van shuttle stop
- Detour and temporary wayfinding signage, along with flaggers, will be utilized to maintain traffic and pedestrian flow during construction



When Arrivals Level Outer Lanes are fully closed, vehicles are detoured to Inner Lanes

Change is in the Air(port).

LAX WAY BETTER. REALLY.

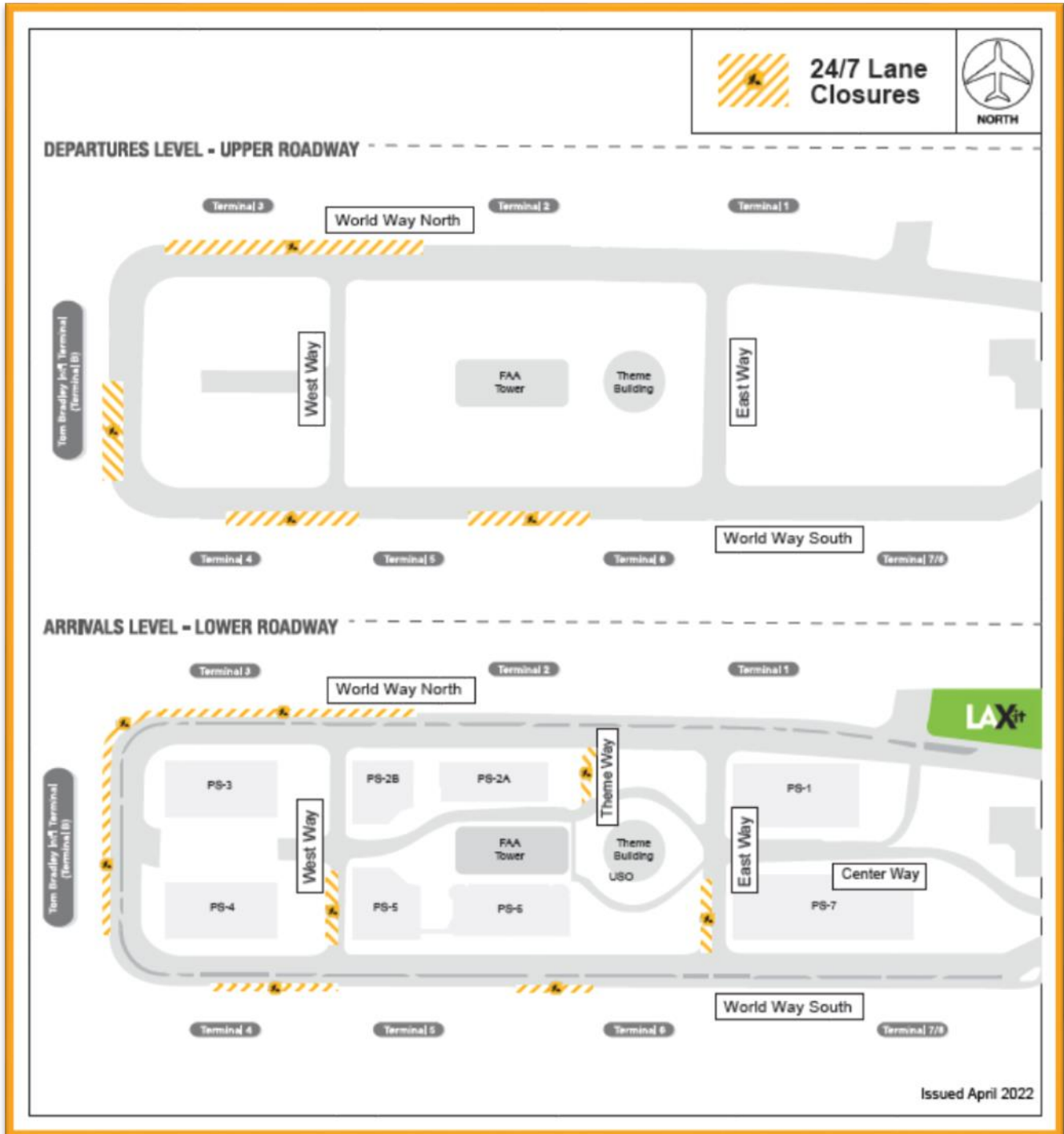


Construction Hot Topics

Week of April 4, 2022

3. April: 24/7 CTA Lane Restrictions

- Scheduled 24/7 lane restrictions for Departures / Upper & Arrivals / Lower Level roadways are illustrated on the map below for the month of April 2022
- Traffic will be maintained at all times; please plan ahead



Change is in the Air(port).

LAX WAY BETTER. REALLY.

