

Construction Hot Topics

Week of February 3, 2020

1. Terminal 2: Starbucks Construction Extended

- Construction barricades in the Terminal 2 concourse that were originally scheduled to be removed this week will now be in place through late March 2020 while a new Starbucks concession is finished

Construction barricades in Terminal 2 concourse



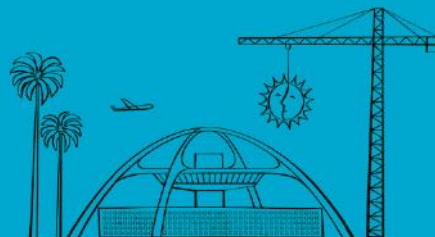
APM falsework on Center Way

2. Automated People Mover Construction Milestone

- The APM project recently reached a big milestone with the erection of falsework on Center Way between Parking Structures 1 and 7
- Falsework (combination of steel and lumber, pictured above) is a temporary structure that's needed to support permanent structures until construction is far enough along to support itself

Change is in the Air(port).

LAX WAY BETTER. REALLY.



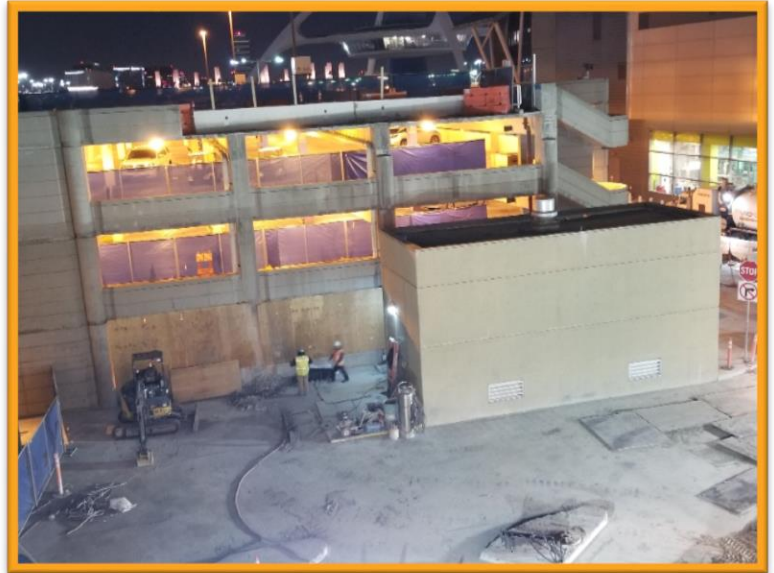
Construction Hot Topics

Week of February 3, 2020

3. Bridge Demolition Completed: Parking Structure 2A / 2B

- The Automated People Mover project has completed the demolition of the connecting bridge between Parking Structures 2A and 2B
- Activity will continue this week to clean up minor debris and the overall worksite

*PS-2A / PS-2B
bridge demolition*



*Northbound West Way
is closed to maintain
southbound West Way
traffic during APM*

4. Northbound West Way: Closed through June 1, 2020

- Northbound West Way from World Way South to World Way North is through Monday, June 1, 2020 at 7AM for Automated People Mover construction
- Southbound traffic on West Way, Parking Structure 2B egress, and pedestrian traffic is maintained

Change is in the Air(port).

LAX WAY BETTER. REALLY.

