



# Airports Development

Executive Management

Program Status Report

May 31, 2011

---

## TABLE OF CONTENTS

Project Status	_____	3
Work in Progress	_____	31
Schedule	_____	36
Financial	_____	44
OCIP	_____	68
MWBE/DBE	_____	71

## ELEMENT OVERVIEW

### **Purpose**

This report is a tool to provide status of the Capital Projects for the Airports Development Group. The report presents status per project followed by the Master Program Schedule, a Financial section with Budget, Cash Flow and Change Orders, OCIP, MWBE/DBE, and a section listing Projects in Definition.

### **Airside Element**

The Airside Element consists of multiple projects necessary for accommodating the movement of large aircraft between the north and south runways; reconfiguring traffic movement to accommodate the Tom Bradley International Terminal (TBIT) expansion and modernization program; and provide airfield improvements as required by Airfield Operations, the Federal Aviation Administration and other Federal and State regulatory agencies.

### **Bradley West Element**

The Bradley West Element provides for certain improvements identified in the approved LAX Master Plan, specifically related to development of new aircraft gates at the Tom Bradley International Terminal. The new gates will support the airport's ability to effectively and efficiently accommodate new large aircraft, such as the Airbus A380, Boeing 747 and Boeing 747-8. In addition, the project calls for substantial improvements related to the concourses and central core area of the Tom Bradley International Terminal, including:

- construction of new north and south concourses at the terminal, west of the existing concourses, which would be removed;
- construction of eight aircraft gates and associated loading bridges and apron areas, along the west side of the new terminal concourses;
- relocation and consolidation of existing aircraft gates along the east side of the Tom Bradley Terminal;
- renovation and enlargement of the existing U.S. Customs and Border Protection areas within the central core of the terminal; and
- construction of the secure passenger corridors between Terminals 3 and 4, and the Bradley Terminal.

---

## ELEMENT OVERVIEW - Continued

### **Central Utility Plant (CUP) Replacement Element**

The CUP Replacement Element includes replacing the existing CUP, constructed in 1961, and the co-generation facility, brought into service in 1985, which are considered obsolete and inefficient relative to present-day technology, the distribution network between the CUP and the terminals, and various mechanical/electrical infrastructure improvements within the terminals.

### **Utilities and Infrastructure Element**

These capital improvement projects are critical utility and infrastructure elements that support Terminal and Airport operations within the Central Terminal Area (CTA). Current construction projects include the In-Line Baggage Screening System program consisting of the construction of fully integrated Transportation Security Administration (TSA) screening equipment in Terminal 3 and removal of lobby machines, plus, the IT Fiber Loop Backbone project which will provide new connectivity between all Terminals and the Telecommunication Building.

### **Landside Element**

The Landside Element undertakes capital projects designed to provide for the efficient and effective movement of people through the airport; and to provide convenient parking for individuals using the airport. Landside projects are typically related to parking lots, public transportation, train stations, tank farms, warehouse and cargo areas and access roads and perimeter fencing.

### **Residential / Soundproofing Element**

LAWA has implemented a voluntary Airport Residential Soundproofing Program (RSP) for aircraft noise impacted areas in the City of Los Angeles. This program is for impacted homes adjacent to the Los Angeles International Airport (LAX) and Van Nuys (VNY).

---

## ELEMENT OVERVIEW - Continued

### **Terminals Element**

Most of LAX's Terminals have been serving their purpose without major renovations or modernization efforts over the years. As needs change, the Terminal spaces and structures need repairs, upgrades, modernization, and standardization to satisfy these changing demands. From modernizing elevators and escalators with standardized devices to updating fire/life safety systems, the Terminals Element is focused on implementing these necessary improvements.

### **Work in Progress**

This section lists the projects that are in various stages of pre-development. Typically, these projects represent efforts for which LAWA has committed funding for the design; not the construction. A project in this category will experience variability as the design is refined. If approved, projects in Work in Progress will be moved into the appropriate execution element. If not approved, projects will be dropped from this report.

---

## AIRSIDE ELEMENT - Construction Support Facilities (M209A)

### **Project Description**

The project includes the construction of a new aircraft parking ramp/block, new emergency exits for American Airlines Maintenance Hangar, airfield security fencing, building modifications, and other miscellaneous construction activities as may be required.

### **Planning and Programming Status**

Project Definition is complete.

### **Design Progress**

Design is 100% complete.

### **Construction Progress**

First construction contract awarded to Griffith Construction on April 21, 2009.

Notice to Proceed issued June 29, 2009.

Construction is 98% complete. Investigation of electrical vaults for the replacement of FAA fiber optic line work is in progress.

### **Budget Status**

This project is anticipated to complete on budget.

### **Schedule Status**

Contract has been extended to May 24, 2012 for future work requirements.

### **Issues**

None at this time.

## AIRSIDE ELEMENT - Crossfield Taxiway Project (M101A)

### **Project Description**

The project entails the construction of a 3,437-foot-long by 100-foot-wide taxiway that connects Taxiway 'B' on the south and Taxiway 'E' on the north. To facilitate this construction, there will be removal of existing deteriorated concrete pavement and the removal of asphalt pavement replaced with Portland Cement Concrete (PCC) and asphalt concrete pavement. This project also constructs a new parallel service road and a replacement apron for Remain Overnight (RON) and the following facilities:

- \* Realignment of World Way West and two bridges over the road; one for aircraft crossing as a part of taxiway C13 and the other for vehicular traffic;
- \* Taxiway centerline electrical, lighting and signage;
- \* Pavement markings, including centerline, edge striping and edge reflectors; and
- \* Installation of redesigned drainage and modifications to existing utilities.

### **Planning and Programming Status**

Project Definition is complete.

### **Design Progress**

Design is 100% complete.

### **Construction Progress**

Construction contract awarded to R & L Brosamer Inc. on March 23, 2009.

Construction Notice to Proceed issued May 11, 2009.

Taxiway 'R' opened on May 24, 2010.

Construction is 100% complete.

### **Budget Status**

The final change orders have been processed. Final closeout is anticipated in June 2011. This project is expected to complete under budget.

### **Schedule Status**

Final project acceptance expected in June 2011.

### **Issues**

None at this time.

---

## **AIRSIDE ELEMENT - LAX Aircraft Rescue and Fire Fighting Facility (M107A)**

### **Project Description**

The new Aircraft Rescue and Fire Fighting Facility (ARFF) is proposed to be constructed as a replacement for the existing Fire Station No. 80. This new facility will be located on World Way West just west of Remain Over Night (RON) aircraft aprons situated relative to the mid-points of the outmost runways (Runway 6L/24R on the north and Runway 7R/25L on the south). The proposed ARFF would provide approximately 27,500 square feet of administrative office area and station living quarters within a 2-story structure, six bays for emergency vehicles along with a service bay, storage area for various emergency response equipments, and briefing and training rooms.

### **Planning and Programming Status**

Project Definition is complete.

### **Design Progress**

Design is 100% complete.

### **Construction Progress**

Construction contract awarded to Tobo Construction on June 10, 2009.

Administrative Notice to Proceed issued July 10, 2009.

Construction Notice to Proceed issued September 4, 2009.

Construction is 100% complete.

The Grand Opening of the LAX Aircraft Rescue and Firefighting Station 80 was held on November 22, 2010.

### **Budget Status**

This project is expected to complete at budget.

### **Schedule Status**

Certificate of Occupancy was signed-off on February 24, 2011.

Notification of Acceptance of Contract was issued on March 17, 2011.

Final Change Order and Final Payment Request were issued in March 2011.

### **Issues**

None at this time.



## AIRSIDE ELEMENT - Bradley West - Aprons (M205A)

### **Project Description**

The Bradley West Aprons project contains an East and West component. The Bradley West Aprons project consists of approximately 34,000 square yards of pavement and associated drainage covering the aprons on the west side of the north and south Concourses as well as the apron west of the Core. This apron construction includes all grading, utilities, airfield signage and lighting; construction of LADWP power and communication ductbanks; and the LAWA power and communication ductbanks.

The Bradley East Aprons project entails construction of approximately 121,000 square yards of pavement and associated drainage from the edge of the new Concourses to the edge of Taxilanes C10/D10. It includes all grading, drainage, utilities, airfield signage and lighting; construction of LADWP power and communication ductbanks; and the LAWA power and communication ductbanks.

### **Planning and Programming Status**

Project Definition is complete.

### **Design Progress**

West Aprons awarded design is 100% complete.  
East Aprons 60% design is anticipated in late June 2011.

### **Construction Progress**

The Bradley West Gates and Core - West Aprons:  
Walsh-Austin JV construction of the BW West Aprons started June 2010 and is scheduled to complete in July 2012.

East Aprons -  
No construction contracts awarded.

### **Budget Status**

This project is tracking on budget.

### **Schedule Status**

This project progressing on schedule.

### **Issues**

None at this time.

## AIRSIDE ELEMENT - Taxilane 'S' (M204A)

### **Project Description**

This project undertakes the relocation of certain ancillary and support facilities; and constructs a 3,785-foot long Taxilane to connect Taxiway 'B' on the south and Taxiway 'E' on the north. Taxilane 'S' will be constructed as part of a 400 foot wide Portland Cement Concrete (PCC) paved strip which will be the first part of the future Dual Taxilane / Taxiway System between the proposed Midfield Satellite Concourse and the Tom Bradley International Terminal. The centerline is located 242 feet west of the existing Taxiway 'Q' centerline. A 169-foot-Object Free Area (OFA) will be provided on the east side of the Taxilane 'S' centerline in accordance with the FAA approved Airport Layout Plan (ALP). This construction also includes the relocation of fuel lines and other utilities, all grading, airfield signage and lighting, construction of LADWP power and communication ductbanks; and the LAWA power and communication ductbanks. Additionally, Taxiway D will be extended approximately 1,000 feet west from Taxiway Q.

The project also includes the construction of approximately 60,000 square yards of pavement and associated drainage covering the aprons on the west side of the north and south Concourses as well as the apron west of the Bradley Core. This apron construction includes all grading, utilities and airfield signage; construction of LADWP power and ductbanks; and the LAWA power and communications ductbanks.

### **Planning and Programming Status**

Project Definition is complete.

### **Design Progress**

Design is 100% complete.

### **Construction Progress**

Construction contract awarded to Flatiron West, Inc. (FWI) on December 7, 2009.

Construction Notice to Proceed for the project was issued on March 1, 2010.

The majority of the econocrete paving in Taxilane S area is complete. The contractor has completed the PCC for the west portion of Taxiway D and has begun Taxilane S PCC paving.

Construction is 53% complete for Package 1 (Taxilane S).

Construction NTP for Package 2 (Aprons) was issued on May 23, 2011.

### **Budget Status**

This project is tracking to the budget.

### **Schedule Status**

Taxilane 'S' is anticipated to open in July 2011.

---

## AIRSIDE ELEMENT - Taxilane 'S' (M204A) - Continued

### Issues

- \* New storm drain construction south of the Concourse Construction Package (CCP) has been accelerated to provide construction access for Walsh Austin.
- \* Remain Overnight (RON) position 5 paving work adjacent to Taxiway Romeo will be paved by PWI upon completion of the Taxilane S to mitigate schedule and cost impacts.
- \* FWI access to the Package 2 - Phase 3 Area (BW Aprons) has been delayed to allow Walsh Austin additional area for base steel assembly associated with the CCP. This delay in accessing this area will have schedule and cost impacts to control. The southern portion of Package 2 - Phase 3 will be occupied by CCP until August 2011.

## AIRSIDE ELEMENT - Taxilane 'T' (M306A)

### Project Description

The project consists of the construction of a 3,166-foot long Taxilane to connect Taxiway 'C' on the south and Taxiway 'D' on the north. Taxilane 'T' will be constructed as part of a 300 ft. wide Portland Cement Concrete (PCC) paved strip which will be the second part of the future Dual Taxilane / Taxiway System replacing existing Taxiways 'Q' and 'S', west of reconfigured Tom Bradley International Terminal (TBIT). The Taxilane 'T' centerline is located 818 feet west of the existing Taxiway 'Q' centerline. A 169-foot-Object Free Area (OFA) will be provided on the west side of the Taxilane 'T' centerline in accordance with the FAA approved Airport Layout Plan (ALP). This construction also includes the Taxilane "T" Service Road, the relocation of fuel lines and other utilities, all grading, airfield signage and lighting, construction of LADWP power ductbanks; and the LAWA power and communication ductbanks. This Scope of work also includes associated projects which consist of the Demo American Airlines (AA) Low Bay Hangar, Relocate and Demo H2O Deluge System, Demo Existing Sky Chef airline catering facility, Partial Demo American Airlines (AA) (former TWA) Hangar, an Emission Reduction Credit and Site Restoration of Southwest Apron Remain Overnight (RON) parking area.

### Planning and Programming Status

Project Definition is complete.

### Design Progress

#### 1 - Taxilane T:

The design contract for Taxilane T was awarded to Kimley Horn & Associates on November 15, 2010.

- \* Task Order 1 (Taxilane T) was approved on February 22, 2011. Anticipating 30% design submission by mid-June 2011.
- \* Task Order 2 (TWA Hangar) is being reviewed and negotiated. The initial design has begun. The full design is being reviewed and negotiated.
- \* Task Order 3 (Low Bay Site Restoration) was issued on May 11, 2011. Design is being coordinated with American Airlines.

#### 2 - Demo AA Low Bay Hangar and Deluge System:

The design of the Demo AA Low Bay Hangar and Deluge System will be completed in June 2011 by AECOM, Inc. The 90% design was submitted on May 31, 2011, and 100% design is anticipated in late June 2011.

#### 3 - Southwest Apron Remain Overnight (RON) Parking Area:

The design for the Southwest Apron Remain Overnight (RON) parking area was awarded to Post, Buckley, Schuh & Jernigan, Inc. (PBS&J) in September 2010. Received 90% design drawing in April 2011 from PBS&J. ADG review is complete. The 100% design is anticipated in early June 2011.

### Construction Progress

No construction contracts awarded.

## AIRSIDE ELEMENT - Taxilane 'T' (M306A) - Continued

### **Budget Status**

This project is tracking on budget.

### **Schedule Status**

1 - Taxilane T:

Kimley-Horn and Associates has proceeded with the design of the Low Bay Site Restoration and TWA preliminary design.

### **Issues**

1 - Taxilane T:

\* Delayed site access availability of Sky Chef and American Airlines Leaseholds may impact project schedule.

2 - Demo AA Low Bay Hangar and Deluge System:

\* The completion of the Demo AA Low Bay Hangar and Deluge System has been adjusted to June 2011 to accommodate the revision to relocate the deluge system adjacent to the Coast Guard.

\* Delayed site access availability of Sky Chef and American Airlines Leaseholds may impact project schedule.

3 - Southwest Apron Remain Overnight (RON) Parking Area:

\* Deletion of the construction of the North position will require some design revisions that may impact schedule and cost.

\* Right of Entry agreement is being drafted for construction over Southern California Edison Agreement.

\* The Federal Environmental Assessment (EA) may impact project schedule.

---

## AIRSIDE ELEMENT - Demolition of Existing Concourses (M210A)

### **Project Description**

Upon completion of the new Bradley West Concourses, this project includes demolition of the existing concourses with the exception of Gate 123, demolition of any existing utilities and restores the site to an appropriate state for Apron construction.

### **Planning and Programming Status**

Project Definition is complete.

### **Design Progress**

No design contract awarded.

### **Construction Progress**

No construction contract awarded.

### **Budget Status**

This project is tracking on budget.

### **Schedule Status**

This project is progressing on schedule.

### **Issues**

None at this time.

---

## **AIRSIDE ELEMENT - Pavement Management Program - VNY Taxi Lane A2 Rehabilitation and RSA Improvements (A010A)**

### **Project Description**

This project will rehabilitate the existing asphalt concrete pavement for Taxi Lane A2 and construct a dual taxi lane, among other improvements. Additionally, this project will improve airfield lighting and signage for Taxi Lane A2 and improvements on Runway Safety Area (RSA) for Runway 16L/34R.

### **Planning and Programming Status**

Project Definition is complete.

### **Design Progress**

Design is 100% complete.

### **Construction Progress**

Construction contract awarded to Griffith Company on August 2, 2010.

Administrative Notice to Proceed was issued on September 7, 2010.

Construction is 100% complete.

### **Budget Status**

This project is under budget.

### **Schedule Status**

Construction Notice to Proceed was issued in November 8, 2010.

Administrative time extension to May 27, 2011 has been processed to complete project close-out.

### **Issues**

None at this time.

## **BRADLEY WEST ELEMENT - Bradley West Gates (M201A)**

### **Project Description**

The project consists of the construction of new double-loaded North and South Concourses at Tom Bradley International Terminal (TBIT). The configuration of the concourses will be based upon the approved aircraft parking layout consisting of nine (9) A380 gates and five (5) Airplane Design Group (ADG) V gates and three (3) narrow-body gates. In addition, the work will consist of constructing approximately 540,000 sq ft of space for passenger services (concessions, toilets etc.), building systems (mech/elect/plumbing), building maintenance, airline operations, retail/food service concessions, concessions storage areas, back of house secured circulation space and airline lounges. The project will also include Building Systems (pedestrian transportation systems, HVAC, electrical and plumbing, drainage, lighting), Telephone System, Life Safety Systems (PA and smoke/fire detection, alarm and sprinkler) and Terminal Systems such as Electronic Visual Information Display System (EVIDS), baggage conveyance, building management systems, access control, intrusion alarm, etc.

### **Planning and Programming Status**

Project Definition is complete.

### **Design Progress**

Design is 95% complete.

### **Construction Progress**

Enclosure and MEP (Mechanical, Electrical & Plumbing) work on North Concourse continues.

Interior CMU continues in both concourses.

Architectural shear wall pours for Gate #134 are complete. Structural Steel installation at piers has commenced.

Architectural shear wall pours for all other North Piers are on-going.

North and South Concourse Tower Cranes have been erected.

South Concourse Slab on Grade / Slab on Metal Deck Pours continue.

Architectural shear wall pours at Gate #154 have commenced.

Steel Erection in South Area 4 is on hold.

Curtainwall framing and roofing layout has started on the North Concourse

### **Budget Status**

This project is anticipated to complete on budget (inclusive of contingency reserves).

Component Guaranteed Maximum Price 01 through 14 have been approved by the Board.

Buy out is 94% complete.



---

## BRADLEY WEST ELEMENT - Bradley West Gates (M201A) - Continued

### Schedule Status

Gates 134 Substantial Completion

Target Date: 08/01/12 Forecast Date: Forecast Date: 10/13/12

West Gates Substantial Completion

Target Date: 12/12/12 Forecast Date: 12/12/12

East Gates Substantial Completion

Target Date: 10/19/13 Forecast Date: 11/26/13

### Issues

The March 2011 WAJV schedule submittal reports the Gate #134 substantial completion date not meeting contract milestone requirements. The introduction of activities and logic related to Permanent Power into the contract schedule has pushed the Gate #134 substantial completion passed the required finish date to 10/13/12. It is ADG's position that these added activities should not have resulted in an impact to the Gate #134 milestone.

A collaborative effort between LAWA/ADG and WAJV is underway to update the program master schedule to incorporate all changes through May 1, 2011, as well as update the schedule with the latest planned approach for project execution. This deliverable is expected to be completed next month (June 2011).

Extended work hours continue in critical areas of the construction site, and when conditions are allowable. The majority of work is single shift.

The contract schedule update does not include key change information related to Gates Bulletins 2 through 5.

## **BRADLEY WEST ELEMENT - Bradley West Core Improvements (M203A)**

### **Project Description**

This project will provide improvements to the Federal Inspection Service (FIS) facilities in Tom Bradley International Terminal (TBIT) and allow for the development of new 693,000 sf improved departure level (post security) passenger amenities, including new restrooms, concessions, airline lounges, and administrative offices within TBIT's existing north and south concourses; renovates, improves and enlarges the space used by the FIS and the Customs and Border Patrol (CBP); constructs secure/sterile passenger corridors between TBIT and Terminals 3 and 4; and renovates and improves existing facilities throughout TBIT including re configuration of the security screening checkpoint.

### **Planning and Programming Status**

Project Definition is complete.

### **Design Progress**

Design is 85% complete.

### **Construction Progress**

Core Steel Erection continues in Section A, and has commenced in Section B.  
Core Basement Wall pours continue  
Under Slab MEP, Wall & Spread footings continue  
Preparation for Slab on Grade pours is underway.

### **Budget Status**

This project is anticipated to complete on budget (inclusive of contingency reserves).  
Component Guaranteed Maximum Price 01 through 15 have been approved by the board.  
Buy out is 59% complete.

### **Schedule Status**

Core Substantial Completion  
Target Date: 12/12/12 Current Forecast Date: 1/18/13 \*\*

\*\*Current forecast date includes the results of recovery planning efforts.

---

## BRADLEY WEST ELEMENT - Bradley West Core Improvements (M203A) - Continued

### Issues

The current forecast date includes the results of recovery planning efforts.

Core construction is currently in the Steel Erection phase, which is program Critical Path work. Any substantial delays to the steel erection process will have an effect on the New Core Substantial Completion Milestone date.

A collaborative effort between LAWA/ADG and WAJV is underway to update the program master schedule to incorporate all changes through May 1, 2011, as well as update the schedule with the latest planned approach for project execution. This deliverable is expected to be completed next month (June 2011).

Extended work hours continue in critical areas of the construction site, and when conditions are allowable. The majority of work is single shift.

The WAJV March 2011 contract schedule submittal shows a completion date for New Core Construction on 5/2/13. Core Bulletin 0 schedule impacts have not yet been incorporated into the program schedule.

## **BRADLEY WEST ELEMENT - Construction Traffic Mitigations (M203B)**

### **Project Description**

The general scope of work involves improving roadway capacity at the two intersections identified by the Bradley West Project Environmental Impact Report as being affected by the Bradley West construction activities and enhancing safety at the future construction contractor parking area.

### **Planning and Programming Status**

Project Definition is complete.

### **Design Progress**

Design is 100% complete.

### **Construction Progress**

BOAC awarded construction contract DA-4478 to Griffith Company on June 28, 2010.

Administrative Notice to Proceed (NTP) was issued on July 29, 2010 and construction NTP issued September 7, 2010.

Overall construction is approximately 97% complete.

The widening for all three phases has been completed.

### **Budget Status**

This project is tracking on budget.

### **Schedule Status**

The overall project is on schedule to be complete in June 2011.

### **Issues**

The contractor is working with the city of Los Angeles to complete the electrical permit work and traffic signal work at the Bradley West Drive Parking Lot.

---

## **BRADLEY WEST ELEMENT - Art In Public Places (M308A)**

### **Project Description**

The program, part of the City of Los Angeles commitment to the community, commissions local artists to produce original artwork for public places. The City passed a law in 1989 allocating one percent of all capital improvement costs to commission art in public places. The Department of Cultural Affairs administers this program through its Public Art Division, aiming to utilize this one percent to contribute enduring, contemporary art experiences to public facilities in the City.

### **Planning and Programming Status**

Proposals from six nominated Los Angeles-based artists have been received and are being reviewed by the Art Oversight Committee (AOC).

### **Design Progress**

No design contract awarded.

### **Construction Progress**

No construction contract awarded.

### **Budget Status**

This project is tracking to the budget.

### **Schedule Status**

This project is anticipated to complete on schedule.

### **Issues**

None at this time.

## CUP REPLACEMENT ELEMENT - Central Utility Plant (C001A)

### **Project Description**

The project provides a replacement Central Utility Plant (CUP) to supply heating hot-water and chilled water to the Central Terminal Area (CTA); the required chillers, pumps, generators, boilers and piping to produce and distribute the hot and cold water; and gas turbine driven generators with heat recovery steam generators (co-generation). The project also includes:

Temporary Power and Associated Relocations Project (TPAR): Construction of a new substation to feed power to the existing CUP and installation of replacement switchgear to allow demolition of the CUP Maintenance Shop Building.

Utility Distribution System: This project includes interconnection to existing piping as well as providing completely new services to Bradley West and the existing terminals and the replacement or bypassing of some existing piping.

Demolition: Demolition of the existing CUP, cooling towers, an electrical substation and existing maintenance buildings located at the footprint of the new CUP.

Facility Management and Control System (FMCS): FMCS to be located in the control room and related control equipment to be furnished for installation in the mechanical rooms of the terminals.

### **Planning and Programming Status**

Project Definition is complete.

### **Design Progress**

CUP design builder, Clark/McCarthy (CMJV) submitted 60% design for the new CUP building in May 2011 and review comments were returned to CMJV by LAWA on May 24, 2011.

### **Construction Progress**

The Walsh-Austin Joint Venture (WAJV) is responsible for the construction of the Temporary Power and Associated Relocations Project (TPAR). TPAR is complete except for a limited number of punch list items. Twenty-one shutdowns for cutover were completed in May and the existing CUP is now powered from the new IS-5074.

CUP design builder, Clark/McCarthy (CMJV) is continuing survey and potholing for design.

A Temporary Interim Maintenance Building is being located in Parking Structure P2B. This will house maintenance shop staff during construction of the new Interim Maintenance Building.

### **Budget Status**

This project is tracking to budget.

---

## **CUP REPLACEMENT ELEMENT - Central Utility Plant (C001A) - Continued**

### **Schedule Status**

CMJV's submitted baseline schedule was returned conditionally approved subject to a number of edits and corrections to be submitted in June 2011.

### **Issues**

Potholing activity has uncovered unforeseen/undocumented utilities in the Central Terminal Area (CTA) which will have to be incorporated into the design of the new distribution piping system.

A number of design issues arose with DWP requiring scope changes. These have been resolved with DWP.

---

## UTILITIES & INFRASTRUCTURE ELEMENT - Airport Response Coordination Center (ARCC) (U009A)

### **Project Description**

This project will provide a centralized response coordination center on the 4th floor of the existing Badging Building located at 7333 World Way West at Los Angeles International Airport (LAX). The project will improve efficiency and communication for day to day operations and response to incidents by collocating various shared operational functionalities into one consolidated location. The new Airport Response Coordination Center will co-locate Airfield Operations, Terminal Operations, Construction and Maintenance, non-emergency Airport Police functions, and traffic management staff into a joint use facility. This new office environment, will utilize information technology for audio, video, CCTV, voice, network, Cable TV connections, PCs, and associated video wall and peripherals to improve situational awareness and communication among various Divisions and staff at LAX.

### **Planning and Programming Status**

Project Definition is complete.

### **Design Progress**

Design is 100% complete.

### **Construction Progress**

The construction contract was awarded to Technion Contractors, Inc. (TCI) on May 17, 2010 and the Notice to Proceed for construction was issued to TCI on June 14, 2010.

The ARCC went operational on December 15, 2010. All LADBS building permits have been signed-off and finalized. LAWA has executed the Final Change Order. Final Pay Request and "Notification of Acceptance of Contract" are being processed and finalized.

### **Budget Status**

This project is tracking on budget.

### **Schedule Status**

This project was substantially completed and the ARCC began live operations on December 15, 2010. Final contract acceptance is being processed and finalized.

### **Issues**

None at this time.



---

## LANDSIDE ELEMENT - Second Level Roadway Expansion Joint and Deck Repairs (L008A)

### **Project Description**

This project provides for the repair and replacement of aging structural expansion joints on the second-level roadway in the Central Terminal Area (CTA). An expansion joint is an assembly designed to safely absorb the heat-induced expansion and contraction of adjoining concrete slabs. Specifically, this project will replace and repair joints and deck frames as recommended in the Caltrans June 2010 bridge inspection report. These repairs are summarized below.

- The removal and replacement of six expansion joints
- The repair of six to eight expansion joints
- The patching of concrete deck cracks and spalls, as needed
- The installation of methacrylate surface coating on 17 deck frames.

### **Planning and Programming Status**

Project Definition is complete.

### **Design Progress**

The designer selection process is underway.

### **Construction Progress**

No construction contract awarded.

### **Budget Status**

This project is tracking to the budget.

### **Schedule Status**

This project is trending on schedule.

### **Issues**

None at this time.

---

## LANDSIDE ELEMENT - Coastal Dunes Improvement Project (L012A)

### **Project Description**

This project proposes to restore the coastal dunes to a natural state by the removal of the existing pavements from the abandoned streets and sidewalks, backfilling the area with select soils and the planting and/or seeding with native coastal plants. This project is a requirement of the 2006 Stipulated Settlement Agreement. Item G of the Agreement calls for a project with a budget not exceeding \$3 million to:

- 1) Remove as much existing pavement as possible from abandoned streets and sidewalks, and;
- 2) Plant appropriate native vegetation in that area.

### **Planning and Programming Status**

Project Definition is complete.

### **Design Progress**

A task order initiating the design is being readied for issuance.

### **Construction Progress**

No construction contract awarded.

### **Budget Status**

The project is tracking to the budget.

### **Schedule Status**

This project is trending on schedule.

### **Issues**

None at this time.

---

## **LANDSIDE ELEMENT - AOA Perimeter Fence (World Way West) Phase 3 (L003A)**

### **Project Description**

This project will enhance approximately 2.2 miles of fence from Taxiway AA to Coast Guard Road of LAX and will be constructed in the same manner as Phases 1 and 2. This project also provides security lighting and electrical duct banks along portions of World Way West from Taxiway AA to Coast Guard Road.

### **Planning and Programming Status**

Project Definition is complete.

### **Design Progress**

Design is 100% complete.

### **Construction Progress**

Construction contract awarded to Griffith Company December 8, 2008.

Notice to Proceed issued January 22, 2009.

Construction is 100% complete including final punch list items.

### **Budget Status**

This project has been completed under budget.

### **Schedule Status**

This project has been completed.

Final Change Orders and Payment Request are completed.

Notice of Acceptance of the project has been filed with the County Recorder.

### **Issues**

None at this time.

---

## RESIDENTIAL/SOUNDPROOFING ELEMENT - Noise Mitigation/Soundproofing (City of LA) (S002A)

### **Project Description**

This project will provide soundproofing of approximately 9,400 eligible dwelling units making them land use compatible.

### **Planning and Programming Status**

Not applicable.

### **Design Progress**

Corlett Skaer & DeVoto was selected for a Short Form Contract not to exceed \$150,000. NTP has been issued to design plans on 78 units.

### **Construction Progress**

Various Construction Contracts ongoing.  
This component of the Noise Mitigation / Soundproofing Program is 89% complete.

### **Budget Status**

This project is trending to complete on budget.

### **Schedule Status**

This project is on track to be completed in 2012.

### **Issues**

None at this time.

---

## TERMINAL ELEMENT - Fire Life Safety System Upgrades T1 & T2 (T006A)

### **Project Description**

This project replaces the existing, outdated, noncompliant Fire Life Safety Systems in Terminals 1 and 2 with new systems that will bring T1 and T2 in full compliance with Los Angeles Fire Department (LAFD) requirements and current Fire and Building Codes, including the Americans with Disabilities Act's (ADA) visible fire alarm notification requirements. The work includes the upgrades of all fire alarms systems, strobes, enunciator panels, conduit and wiring. Complete tests will be performed at installation milestones to assure that the new system meets all current requirements. Completing this work will eliminate costly fire watch conditions and provide effective warning signals for passengers and users of the terminals in case of fire and other emergencies.

### **Planning and Programming Status**

Project Definition is Complete.

### **Design Progress**

No design contract awarded.

### **Construction Progress**

The authorization to advertise for a construction contract was approved in December 2010 and advertized on May 12, 2011. Construction bids are due in June 2011.

No construction contract awarded.

### **Budget Status**

This project is tracking to the budget.

### **Schedule Status**

This project is trending on schedule.

### **Issues**

None at this time.

## TERMINAL ELEMENT - Elevators and Escalators Replacement (T001A)

### **Project Description**

This project will upgrade / replace all aging elevators, escalators and moving walkways at LAX, which have exceeded their useful life expectancy. These units will be upgraded/replaced in staggered Priority Groups.

### **Planning and Programming Status**

Project Definition is complete.

### **Design Progress**

Priority II-IV Site Mods - Design is 100% complete.

Priority II-IV GC MRL Elevators - Design is 80% complete.

### **Construction Progress**

Priority I Site Mods - Construction contract awarded to W.E. O'Neil Construction Company on August 17, 2009 - Construction is 80% complete.

Priority II - Procurement - Fabrication is at 15%. The first two units are on site for June 2011 installation.

Priority II-IV Site Mods - Original bids were rejected due to scope change. Modified scope to re-advertise June 2011.

Priority II-IV GC MRL Elevators - No construction contracts awarded.

### **Budget Status**

Each active project remains on track to finish within the respective project budget.

### **Schedule Status**

The Priority 1 Units installation is projected to extend to mid-December 2011 due to access issues in Terminal 5.

Resequencing future work is underway and Milestone extensions are being issued to account for compensable delays. A forthcoming Change Order to extend the contract duration is being prepared for Board Action July 2011.

### **Issues**

Sequence of work at Terminal 6 will cause delays to the current KONE contract - a forthcoming Change Order to extend KONE's contract is being prepared for Board action.

## WORK IN PROGRESS OVERVIEW

### User's Guide - Work in Progress

This section lists the projects that are in various stages of pre-development. Typically, these projects represent efforts for which LAWA has committed funding for the design; not the construction. A project in this category will experience variability as the design is refined, until it is deemed operationally and economically viable and moved into an execution element.

---

## WORK IN PROGRESS - Interim Taxiway Safety Improvement Project (ITSIP) (A006B)

### **Project Description**

The Interim Taxiway Safety Improvement Project (ITSIP) relocates three high-speed exit taxiways between the North Airfield Runways. The relocated taxiways reduce the likelihood and severity of potential runway incursions without significant impacts to runway occupancy and operational efficiency. The construction elements include demolition and decommissioning of existing taxiways, construction of new taxiways using concrete and asphalt pavement, pavement striping and marking, airfield lighting modifications and modifications to navigational equipment, as needed.

### **Issues / Status**

The design was awarded to Post, Buckley, Schuh & Jernigan, Inc. (PBS&J) in September 2010. The scoping and cost validation work is underway.



---

## **WORK IN PROGRESS - Pavement Management Program - VNY Taxilane A2 Rehabilitation - Phase 2 (A010B)**

### **Project Description**

This project is the second, and last, phase of pavement rehabilitation of Taxilane A2 at Van Nuys Airport. This complete rehabilitation of the taxilane will allow for its dual usage which will increase safety and allow for further development of aviation services within that portion of the airfield. The project is eligible for 95% AIP reimbursement.

### **Issues / Status**

The authorization to advertise for a construction contract was approved in February 2011; and bids are forecast for June 2011.

---

## **WORK IN PROGRESS - AOA Perimeter Fence Requirement - Phase 4 (L014A)**

### **Project Description**

This phase of the project will enhance the security of the Airport Operation Areas (AOA) perimeter fencing along Imperial Highway, Aviation and Century Boulevards by either replacing the existing fencing or by providing additional proactive security measures similar to those that are already in place along all other portions of the AOA at LAX. Completing this project, which is the last phase of a multi-phased security fencing program, will ensure that AOA fencing along the entire perimeter of LAX meets the same enhanced security standards.

### **Issues / Status**

The authorization to advertise for a construction contract was approved in February 2011; and bids are forecast for June 2011.

---

## WORK IN PROGRESS - VNY Soundproofing (S008A)

### **Project Description**

The Van Nuys program consists of soundproofing 1,049 eligible dwelling units. Typical improvements include, but are not limited to, the replacement of windows, doors, fireplace doors and dampers, installation of attic baffles, insulation and ventilation/HVAC systems. The Program is strictly voluntary and free of charge to the homeowners.

At this time, 53-units are ready to be included in a construction contract. The owners of these units have signed and approved the scopes of work, installation agreements and have submitted proof of ownership. Completion of these units at VNY will complete the current VNY Soundproofing Program that started in 2000.

### **Issues / Status**

Bids were received in May 2011 and a contract award is scheduled for August 2011.

---

## PROGRAM MASTER SCHEDULE OVERVIEW

### User's Guide - Schedule

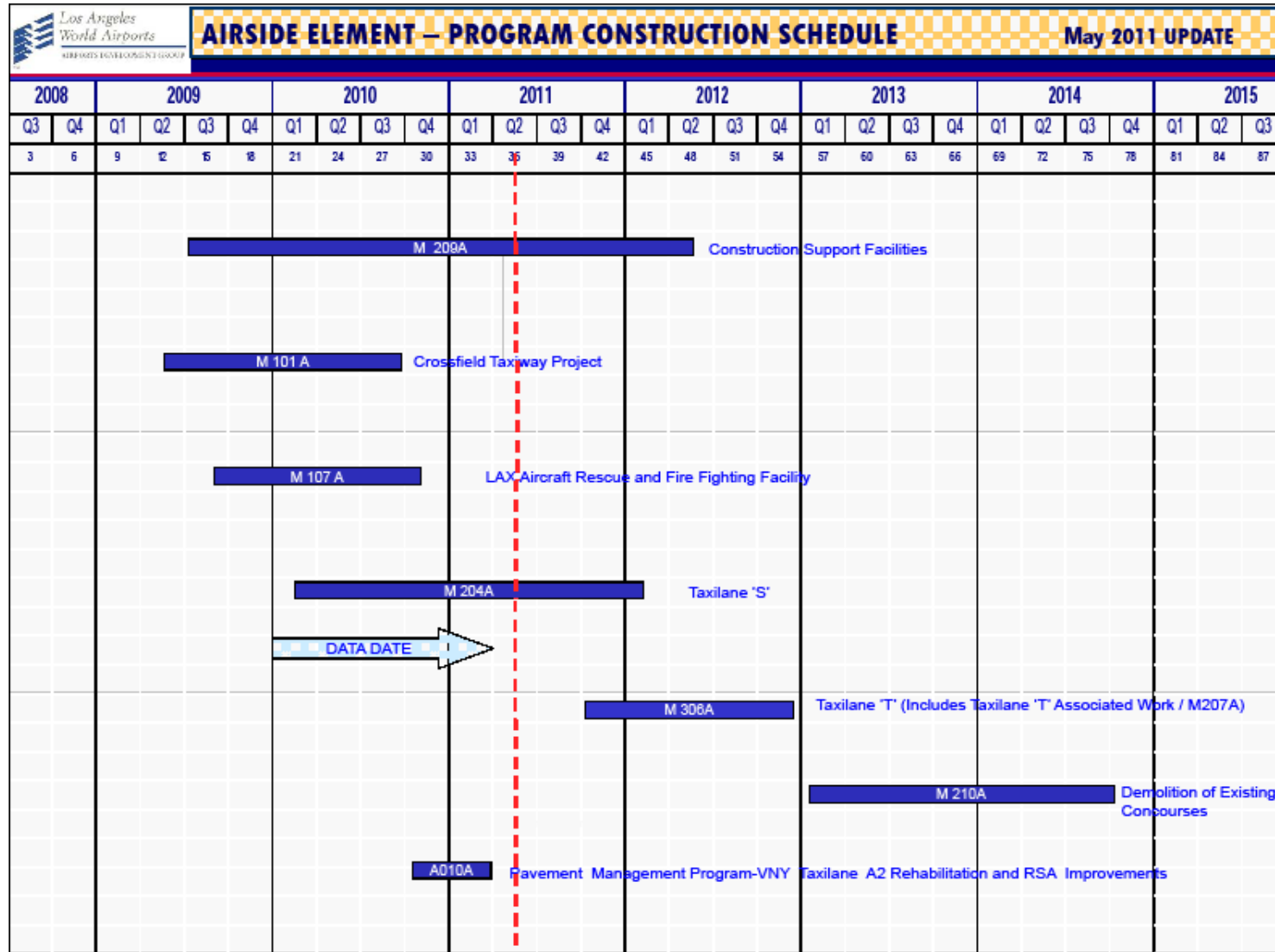
The information provided herein is designed to furnish users of the Airport Development Group (ADG) Program Construction Schedule Report with greater knowledge and a better understanding of the composition of the various components of the schedule report.

**Data Date** - Is a vertical line showing the current date of the report. Dates to the left side of the data date are known. Dates to the right side of the data date are projected.

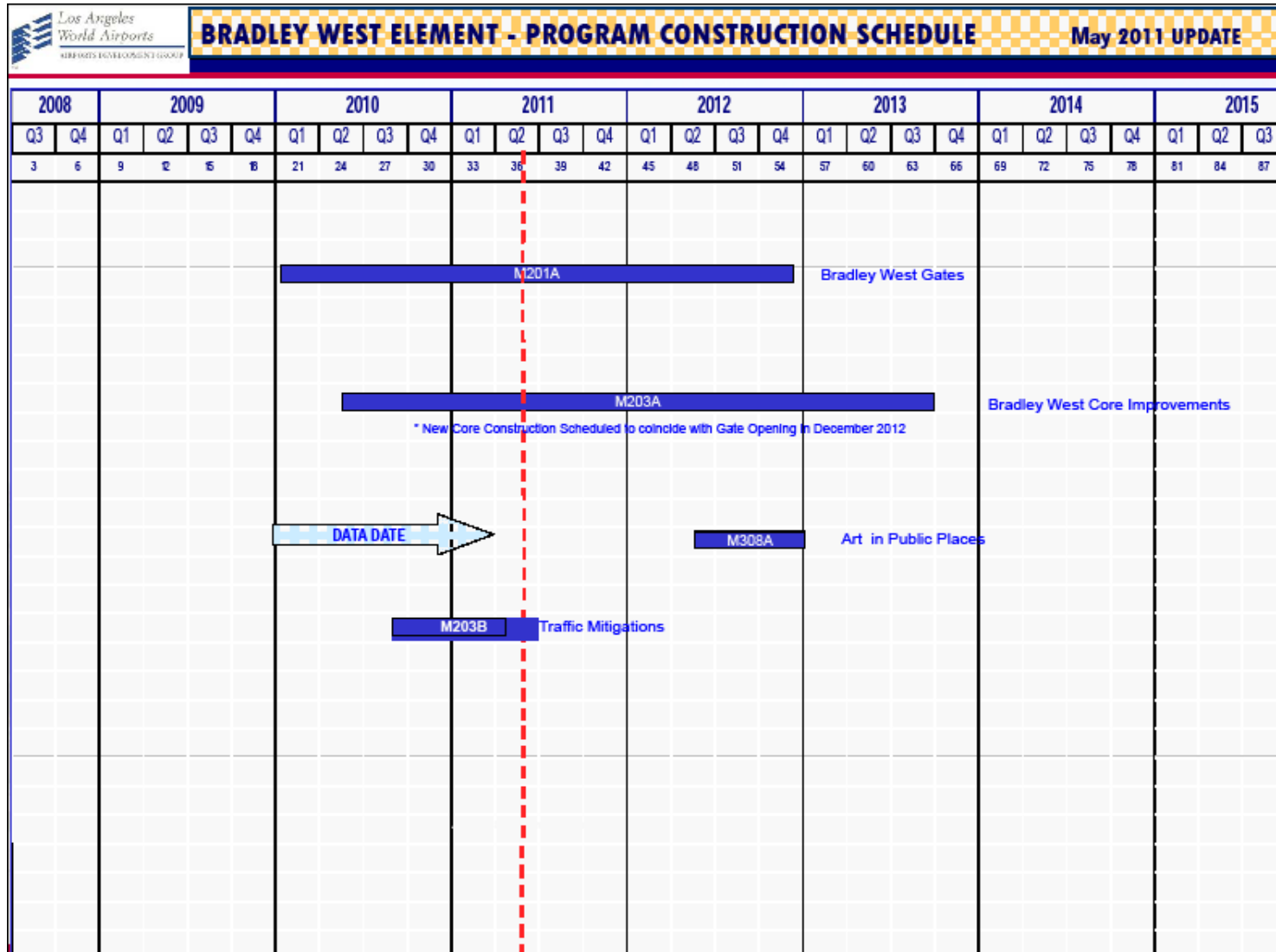
**Project Schedule Bar** - Is the blue bar which represents the construction phase for each project; with the exception of the Residential / Soundproofing projects which contains planning, design and construction phases.

**Project Number** - Is a unique identifier for each project that enables the reader to easily correlate scope, schedule and budget.

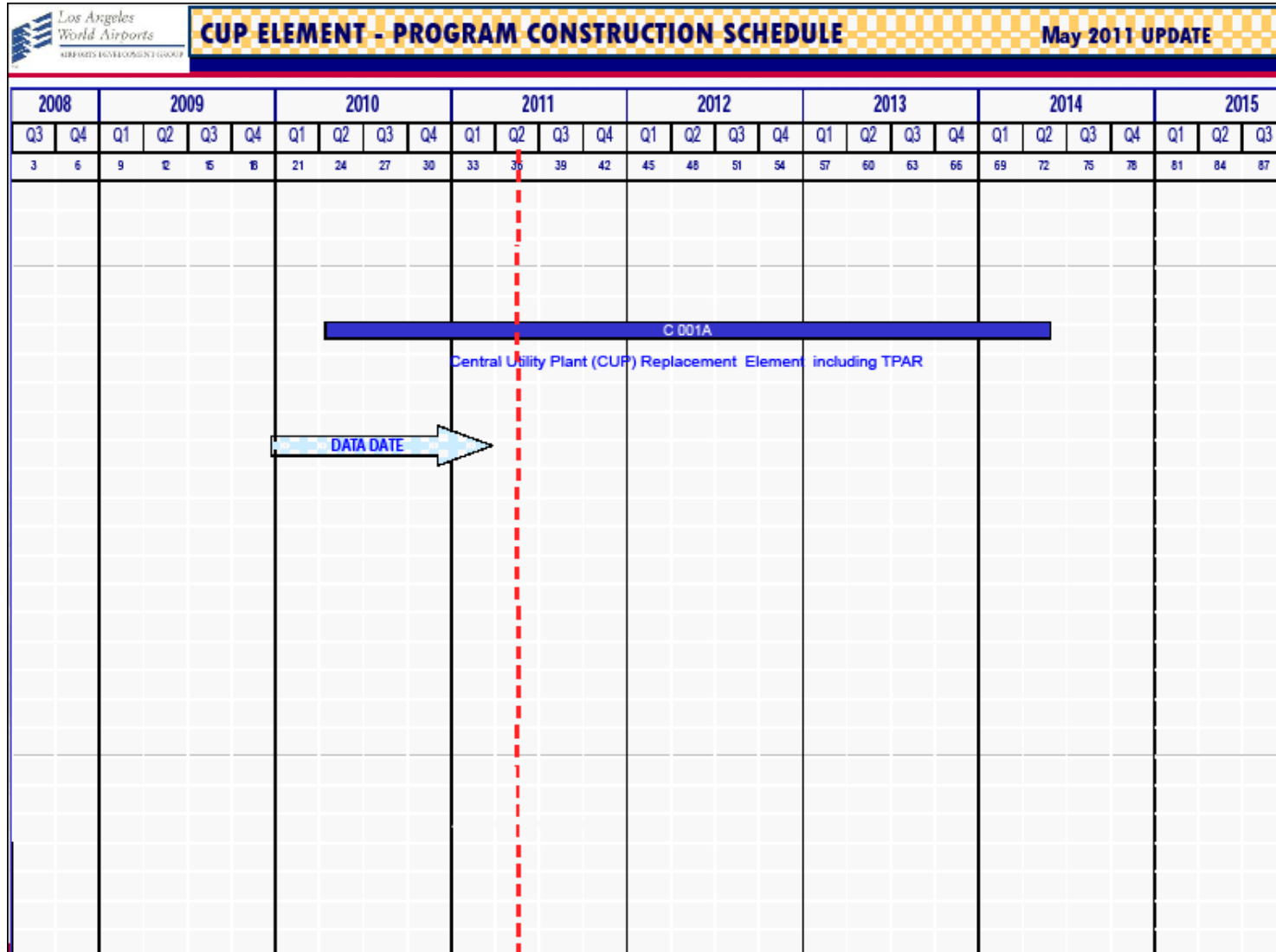
## PROGRAM MASTER SCHEDULE - Continued




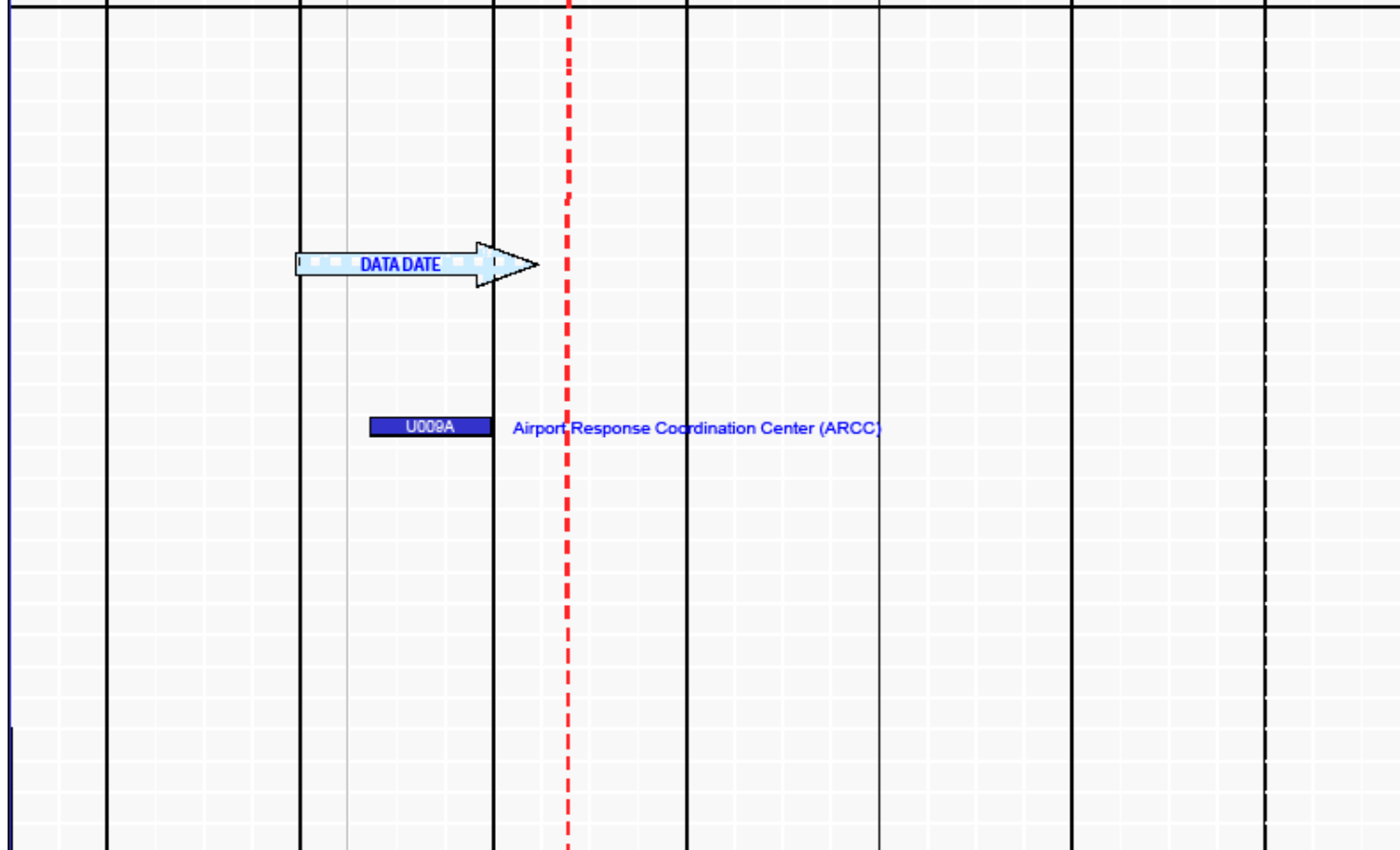
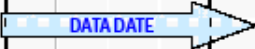

## PROGRAM MASTER SCHEDULE - Continued



# PROGRAM MASTER SCHEDULE - Continued

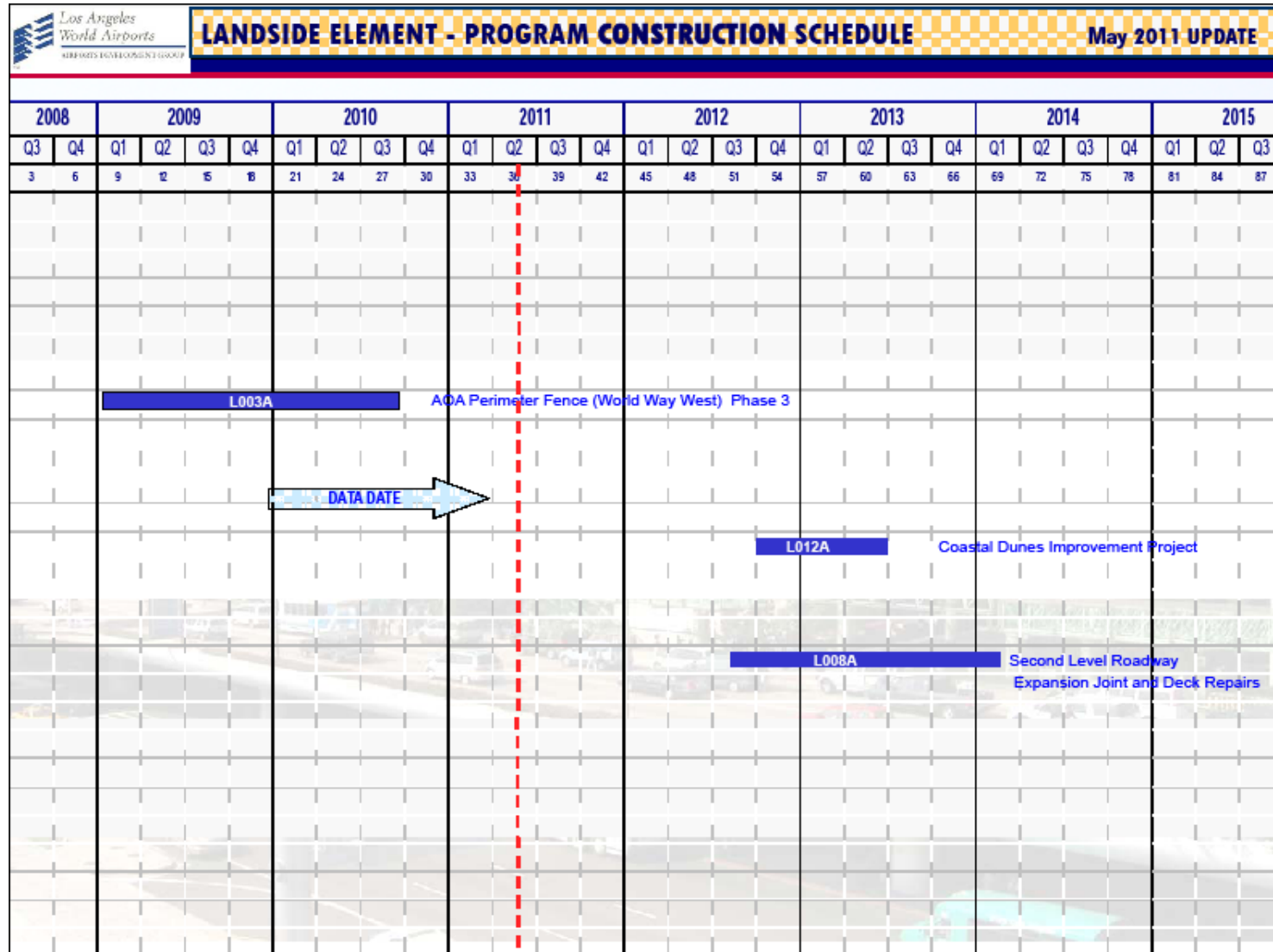


# PROGRAM MASTER SCHEDULE - Continued

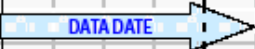
 <b>UTILITIES &amp; INFRASTRUCTURES ELEMENT - PROGRAM CONST. SCHEDULE</b> <small>May 2011 UPDATE</small>																													
2008			2009				2010				2011				2012				2013				2014				2015		
Q3	Q4		Q1	Q2	Q3	Q4	Q1	Q2	Q3	Q4	Q1	Q2	Q3	Q4	Q1	Q2	Q3	Q4	Q1	Q2	Q3	Q4	Q1	Q2	Q3	Q4	Q1	Q2	Q3
3	6		9	12	15	18	21	24	27	30	33	36	39	42	45	48	51	54	57	60	63	66	69	72	75	78	81	84	87
																													
																													
																													



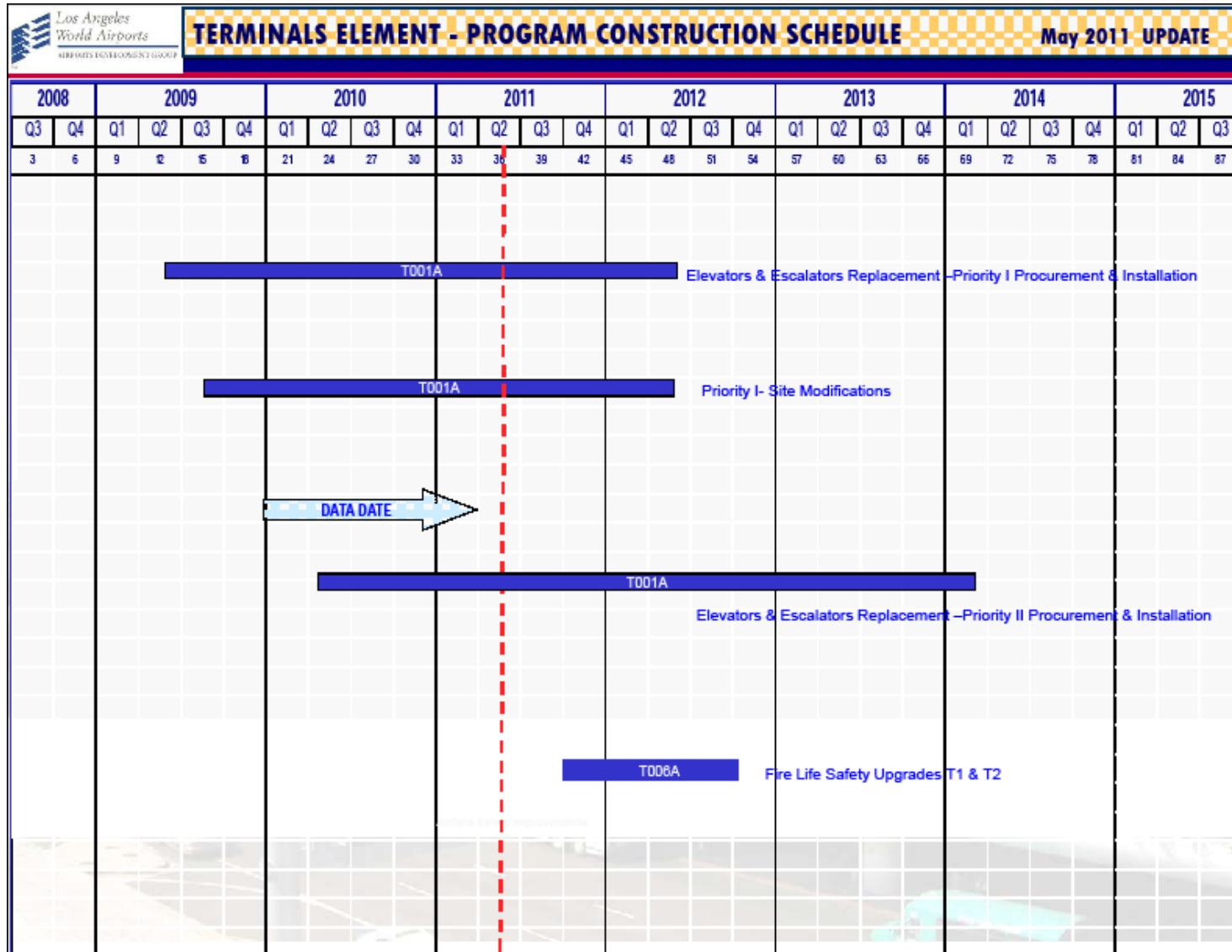
## PROGRAM MASTER SCHEDULE - Continued



## PROGRAM MASTER SCHEDULE - Continued

Los Angeles World Airports AIRPORTS DEVELOPMENT GROUP		<b>RESIDENTIAL/ SOUNDPROOFING ELEMENT- PROGRAM SCHEDULE</b>																												May 2011 UPDATE						
2008		2009				2010				2011				2012				2013				2014				2015										
Q3	Q4	Q1	Q2	Q3	Q4	Q1	Q2	Q3	Q4	Q1	Q2	Q3	Q4	Q1	Q2	Q3	Q4	Q1	Q2	Q3	Q4	Q1	Q2	Q3	Q4	Q1	Q2	Q3								
3	6	9	12	15	18	21	24	27	30	33	36	39	42	45	48	51	54	57	60	63	66	69	72	75	78	81	84	87								
S002A														Noise Mitigation / Soundproofing ( City of LA )																						
																																				

## PROGRAM MASTER SCHEDULE - Continued



### User's Guide - Budget Reports

The information provided herein is designed to furnish users of the Airport Development Group (ADG) Budget Reports with greater knowledge and a better understanding of the composition of the various components of the budget report.

**Baseline Budget** - Is the estimated cost of the project as it was reported in the November 2009 report with the exception of the Crossfield Taxiway project which is from the February 2009 Operating Statement (OS) budget report.

**Current Budget** - Is the estimated cost of the project as it was planned plus or minus any processed revisions.

**Committed to Date** - Is the total contractual obligation to date for the project, e.g. awarded design contracts, awarded construction contracts, authorized task orders, etc.

**Incurred to Date** - Is the total of invoices received to date for the project.

**Estimate at Completion (EAC)** - Is the latest estimate of the total cost of the project.

**Variance** - Is the difference between Budget minus Estimate at Completion (EAC).

**Percent (%) Incurred** - Calculated as Incurred to Date divided by Estimate at Completion, this column provides a financial-oriented progress indicator.

**Percent (%) Contingency Used**: Calculated as the change in Contingency divided by Original Contingency, this column provides an indicator for project contingency-usage.

## PROGRAM COST SUMMARY REPORT

as of 4/30/2011

(dollars in thousands)								
Description	Baseline Budget	Current Budget	Committed to Date	Incurred to Date	Estimate at Completion	Variance (Budget-EAC)	% Incurred	% Cont Used
Airside Element	650,660	651,059	345,170	248,168	605,374	45,684	41%	57%
Bradley West Element	1,545,020	1,547,803	1,128,329	426,212	1,440,509	107,294	30%	15%
CUP Replacement Element	438,085	438,085	338,486	65,763	383,791	54,294	17%	0%
Utilities & Infrastructure Element	8,175	13,914	13,464	11,862	13,718	197	86%	100%
Landside Element	39,062	39,062	14,578	14,386	34,699	4,363	41%	48%
Residential/Soundproofing Element	180,000	160,000	148,038	141,887	160,000	0	89%	0%
Terminal Element	275,300	246,326	97,546	46,471	207,268	39,058	22%	9%
<b>Subtotal</b>	<b>3,136,302</b>	<b>3,096,249</b>	<b>2,085,611</b>	<b>954,749</b>	<b>2,845,359</b>	<b>250,890</b>	<b>34%</b>	<b>22%</b>
Unallocated Contingency	N/A	315,870	0	0	N/A	N/A	N/A	N/A
<b>Subtotal</b>	<b>N/A</b>	<b>3,412,119</b>	<b>2,085,611</b>	<b>954,749</b>	<b>N/A</b>	<b>N/A</b>	<b>N/A</b>	<b>N/A</b>
Work in Progress	N/A	N/A	6,754	850	N/A	N/A	N/A	N/A
<b>Program Total</b>	<b>N/A</b>	<b>3,412,119</b>	<b>2,092,365</b>	<b>955,599</b>	<b>N/A</b>	<b>N/A</b>	<b>N/A</b>	<b>N/A</b>

Notes:

1. The current budget and estimate at completion excludes escalation

## AIRSIDE ELEMENT BUDGET REPORT

as of 4/30/2011

(dollars in thousands)									
Project #	Description	Baseline Budget	Current Budget	Committed to Date	Incurred to Date	Estimate at Completion	Variance (Budget-EAC)	% Incurred	% Cont Used
M209A	Construction Support Facilities	14,790	8,425	7,106	6,105	7,257	1,168	84%	37%
M101A	Crossfield Taxiway Project	177,760	145,678	143,503	132,230	137,880	7,797	96%	95%
M107A	LAX Aircraft Rescue and Fire Fighting Facility	14,190	14,190	13,889	13,692	14,457	(267)	95%	98%
M205A	Bradley West - Aprons	111,870	111,870	25,148	14,007	103,520	8,350	14%	1%
M204A	Taxilane 'S'	174,980	154,118	137,053	69,675	149,122	4,996	47%	65%
M306A	Taxilane 'T'	96,500	156,208	11,754	6,590	144,898	11,310	5%	0%
M210A	Demolition of Existing Concourses	52,600	52,600	1,770	1,636	43,604	8,996	4%	0%
A010A	Pavement Management Program - VNY Taxilane A2 Rehabilitation and RSA Improvements	7,970	7,970	4,947	4,233	4,636	3,334	91%	11%
<b>Airside Element Total</b>		<b>650,660</b>	<b>651,059</b>	<b>345,170</b>	<b>248,168</b>	<b>605,374</b>	<b>45,684</b>	<b>41%</b>	<b>57%</b>

Notes:

1. The current budget and estimate at completion excludes escalation

## BRADLEY WEST ELEMENT BUDGET REPORT

as of 4/30/2011

(dollars in thousands)									
Project #	Description	Baseline Budget	Current Budget	Committed to Date	Incurred to Date	Estimate at Completion	Variance (Budget-EAC)	% Incurred	% Cont Used
M201A	Bradley West Gates	742,954	744,879	640,192	266,341	727,665	17,214	37%	30%
M203A	Bradley West Core Improvements	793,164	795,089	480,629	158,140	705,306	89,783	22%	0%
M203B	Construction Traffic Mitigations	3,542	2,475	2,148	1,731	2,178	297	79%	34%
M308A	Art In Public Places	5,360	5,360	5,360	0	5,360	0	0%	0%
<b>Bradley West Element Total</b>		<b>1,545,020</b>	<b>1,547,803</b>	<b>1,128,329</b>	<b>426,212</b>	<b>1,440,509</b>	<b>107,294</b>	<b>30%</b>	<b>15%</b>

Notes:

1. The current budget and estimate at completion excludes escalation

## CUP REPLACEMENT ELEMENT BUDGET REPORT

as of 4/30/2011

(dollars in thousands)									
Project #	Description	Baseline Budget	Current Budget	Committed to Date	Incurred to Date	Estimate at Completion	Variance (Budget-EAC)	% Incurred	% Cont Used
C001A	Central Utility Plant	438,085	438,085	338,486	65,763	383,791	54,294	17%	0%
<b>CUP Replacement Element Total</b>		<b>438,085</b>	<b>438,085</b>	<b>338,486</b>	<b>65,763</b>	<b>383,791</b>	<b>54,294</b>	<b>17%</b>	<b>0%</b>

Notes:

1. The current budget and estimate at completion excludes escalation



## UTILITIES & INFRASTRUCTURE ELEMENT BUDGET REPORT

as of 4/30/2011

(dollars in thousands)									
Project #	Description	Baseline Budget	Current Budget	Committed to Date	Incurred to Date	Estimate at Completion	Variance (Budget-EAC)	% Incurred	% Cont Used
U009A	Airport Response Coordination Center (ARCC)	8,175	13,914	13,464	11,862	13,718	197	86%	100%
<b>Utilities &amp; Infrastructure Element Total</b>		<b>8,175</b>	<b>13,914</b>	<b>13,464</b>	<b>11,862</b>	<b>13,718</b>	<b>197</b>	<b>86%</b>	<b>100%</b>

Notes:

1. The current budget and estimate at completion excludes escalation

## LANDSIDE ELEMENT BUDGET REPORT

as of 4/30/2011

(dollars in thousands)									
Project #	Description	Baseline Budget	Current Budget	Committed to Date	Incurred to Date	Estimate at Completion	Variance (Budget-EAC)	% Incurred	% Cont Used
L008A	Second Level Roadway Expansion Joint and Deck Repairs	18,900	18,900	0	0	17,500	1,400	0%	0%
L012A	Coastal Dunes Improvement Project	3,000	3,000	0	0	2,780	220	0%	0%
L003A	AOA Perimeter Fence (World Way West) Phase 3	17,162	17,162	14,578	14,386	14,419	2,743	100%	100%
<b>Landside Element Total</b>		<b>39,062</b>	<b>39,062</b>	<b>14,578</b>	<b>14,386</b>	<b>34,699</b>	<b>4,363</b>	<b>41%</b>	<b>48%</b>

Notes:

1. The current budget and estimate at completion excludes escalation

## RESIDENTIAL/SOUNDPROOFING ELEMENT BUDGET REPORT

as of 4/30/2011

(dollars in thousands)									
Project #	Description	Baseline Budget	Current Budget	Committed to Date	Incurred to Date	Estimate at Completion	Variance (Budget-EAC)	% Incurred	% Cont Used
S002A	Noise Mitigation/Soundproofing (City of LA)	180,000	160,000	148,038	141,887	160,000	0	89%	0%
<b>Residential/Soundproofing Element Total</b>		<b>180,000</b>	<b>160,000</b>	<b>148,038</b>	<b>141,887</b>	<b>160,000</b>	<b>0</b>	<b>89%</b>	<b>0%</b>

Notes:

1. The current budget and estimate at completion excludes escalation

## TERMINAL ELEMENT BUDGET REPORT

as of 4/30/2011

(dollars in thousands)									
Project #	Description	Baseline Budget	Current Budget	Committed to Date	Incurred to Date	Estimate at Completion	Variance (Budget-EAC)	% Incurred	% Cont Used
T006A	Fire Life Safety System Upgrades T1 & T2	5,300	5,300	0	0	4,350	950	0%	0%
T001A	Elevators and Escalators Replacement	270,000	241,026	97,546	46,471	202,918	38,108	23%	9%
<b>Terminal Element Total</b>		<b>275,300</b>	<b>246,326</b>	<b>97,546</b>	<b>46,471</b>	<b>207,268</b>	<b>39,058</b>	<b>22%</b>	<b>9%</b>

Notes:

1. The current budget and estimate at completion excludes escalation

## WORK IN PROGRESS BUDGET REPORT

as of 4/30/2011

(dollars in thousands)									
Project #	Description	Baseline Budget	Current Budget	Committed to Date	Incurred to Date	Estimate at Completion	Variance (Budget-EAC)	% Incurred	% Cont Used
A010B	Pavement Management Program - VNY Taxi Lane A2 Rehabilitation - Phase 2	N/A	N/A	0	0	N/A	N/A	N/A	N/A
L014A	AOA Perimeter Fence Requirement - Phase 4	N/A	N/A	0	0	N/A	N/A	N/A	N/A
S008A	VNY Soundproofing	N/A	N/A	0	0	N/A	N/A	N/A	N/A
A006B	Interim Taxiway Safety Improvement Project (ITSIP)	N/A	N/A	6,754	850	N/A	N/A	N/A	N/A
<b>Work in Progress Element Total</b>		N/A	N/A	<b>6,754</b>	<b>850</b>	N/A	N/A	N/A	N/A

Notes:

1. The current budget and estimate at completion excludes escalation

---

## PROGRAM CASH FLOW OVERVIEW

### User's Guide - Cash Flow

The information provided herein is designed to furnish users of the Airport Development Group (ADG) Cash Flow Reports with greater knowledge and a better understanding of the cash flow report.

Monthly Plan - Is the estimated cost of the work anticipated for a given month.

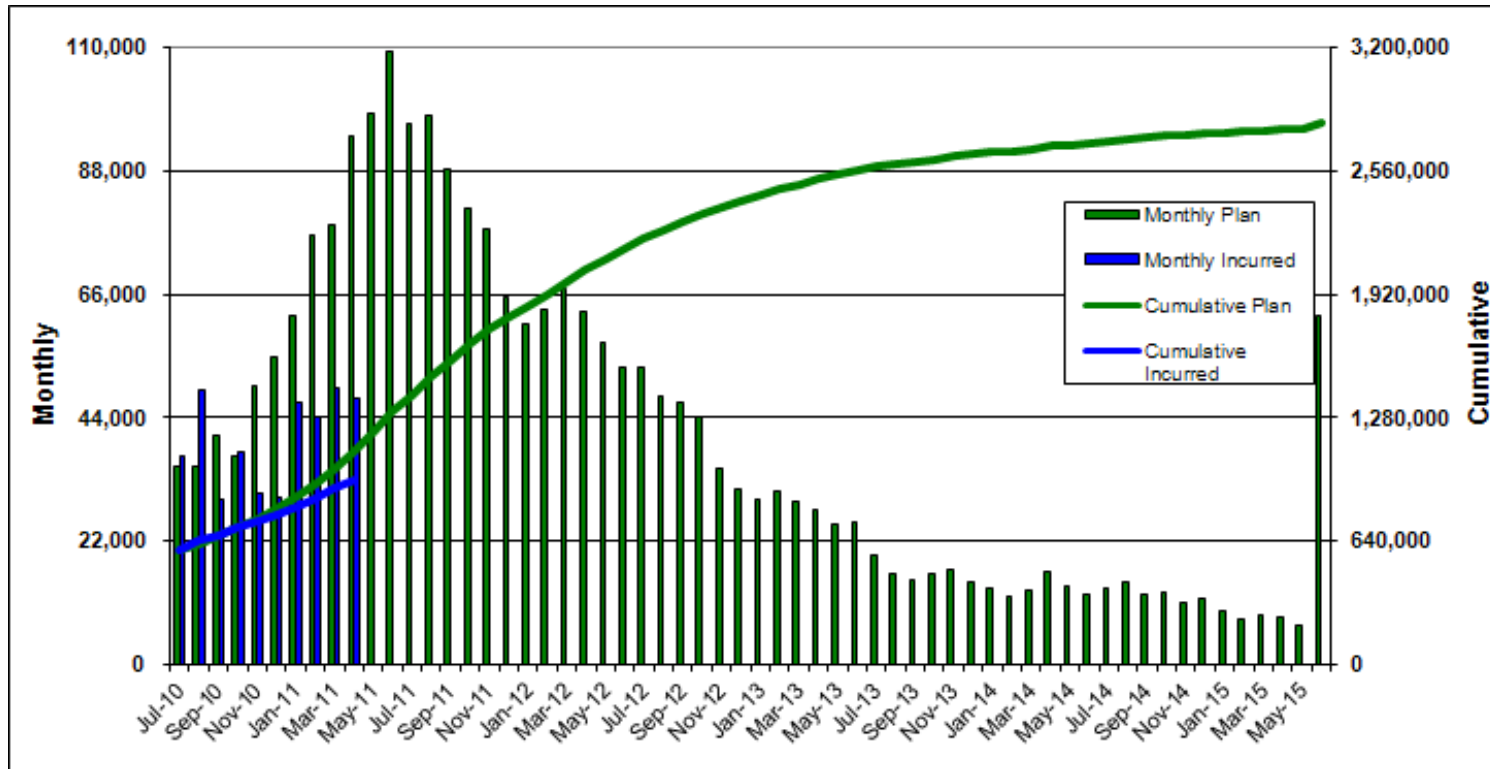
Monthly Incurred - Is the cost of the work actually completed and invoiced for a given month.

Cumulative Plan - Represents the summation of the Monthly Plan amounts, to a given point in time, and provides the user with an overall forecast.

Cumulative Incurred - Represents the summation of the Monthly Incurred amounts, to a given point in time, and provides the user with the total amount invoiced.

## PROGRAM CASH FLOW

as of 4/30/2011

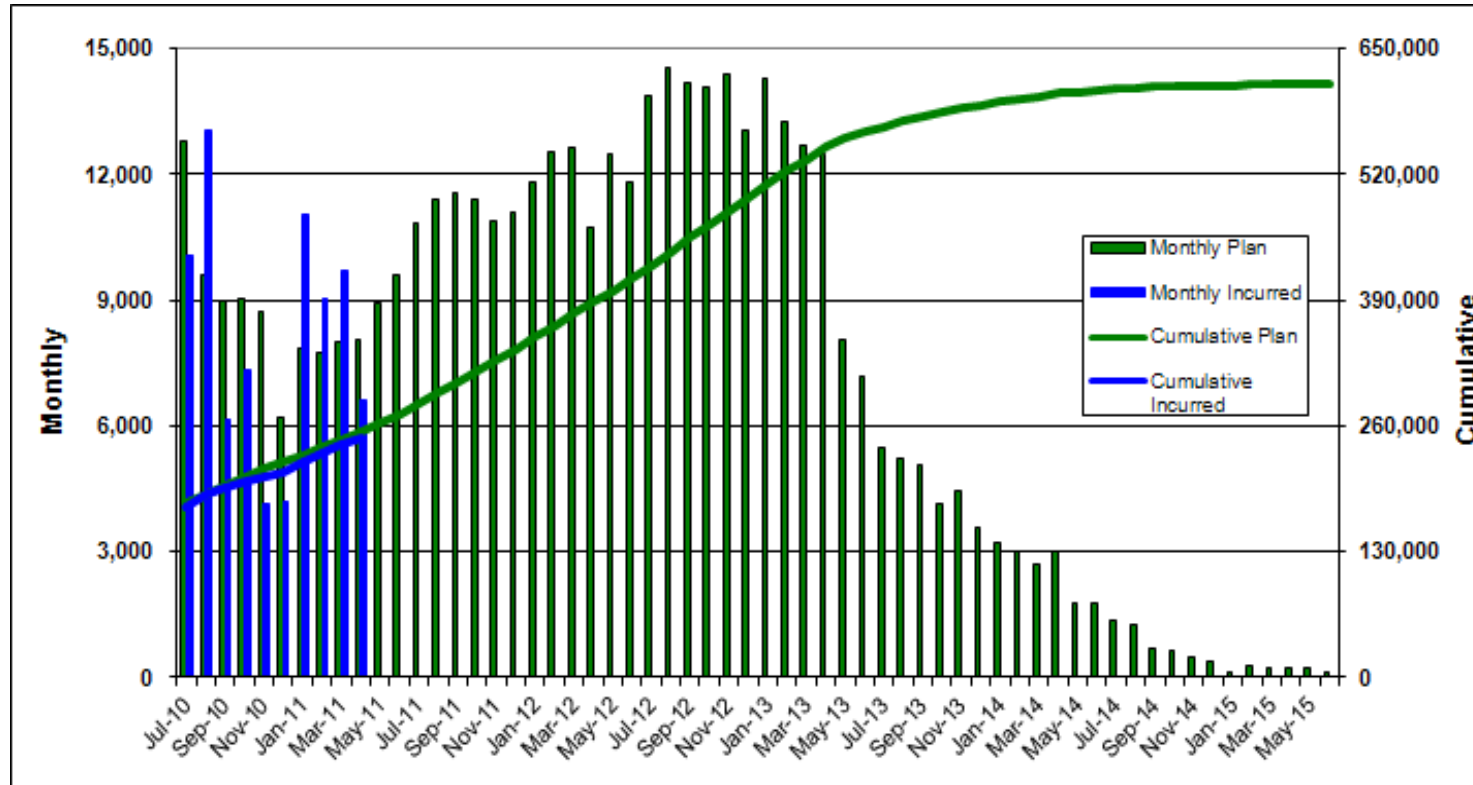


Notes:

1. Unallocated Contingency is not included.
2. Escalation is not included.

## AIRSIDE ELEMENT CASH FLOW

as of 4/30/2011



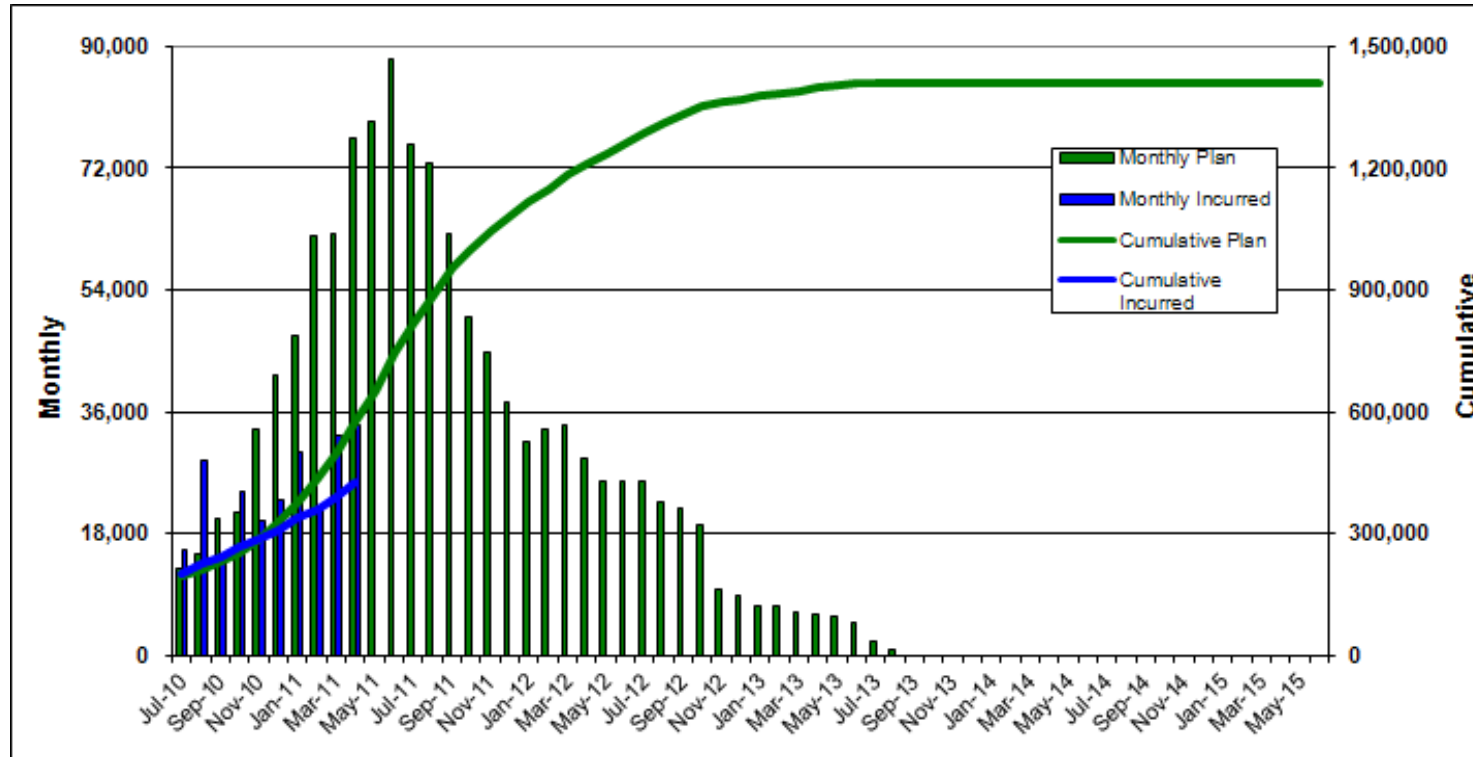
Notes:

1. Unallocated Contingency is not included.
2. Escalation is not included.



## BRADLEY WEST ELEMENT CASH FLOW

as of 4/30/2011

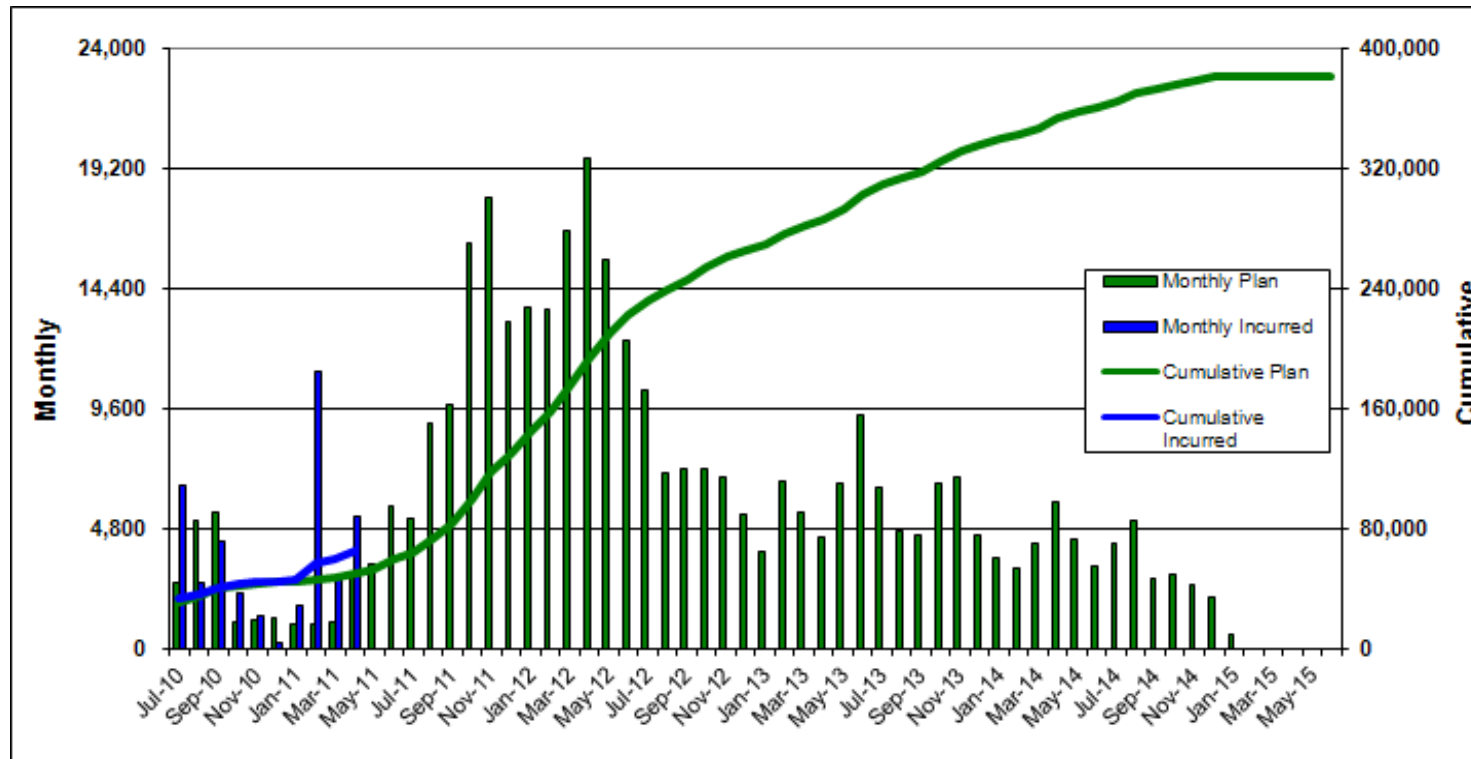


Notes:

1. Unallocated Contingency is not included.
2. Escalation is not included.

## CUP REPLACEMENT CASH FLOW

as of 4/30/2011

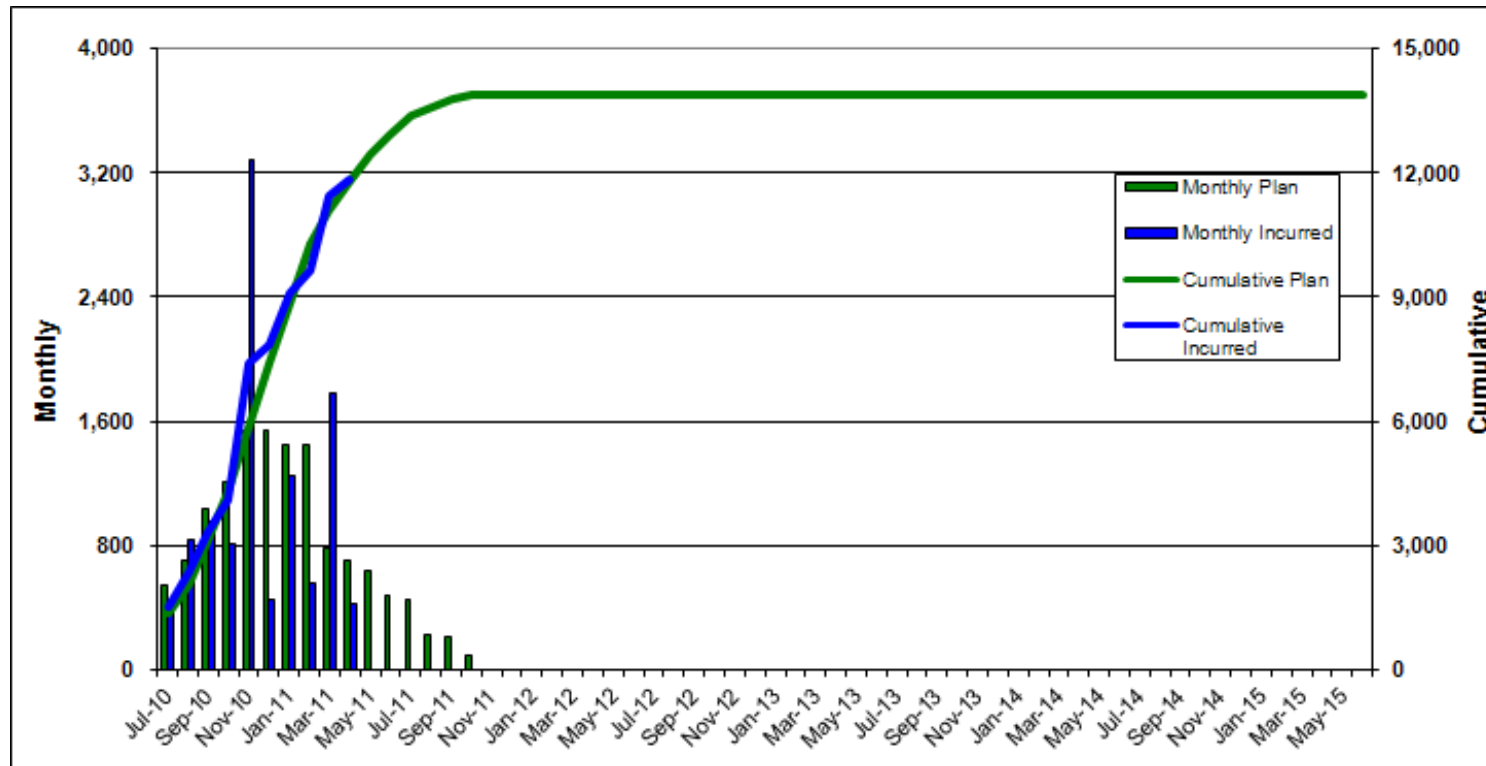


Notes:

1. Unallocated Contingency is not included.
2. Escalation is not included.

## UTILITIES & INFRASTRUCTURE ELEMENT CASH FLOW

as of 4/30/2011

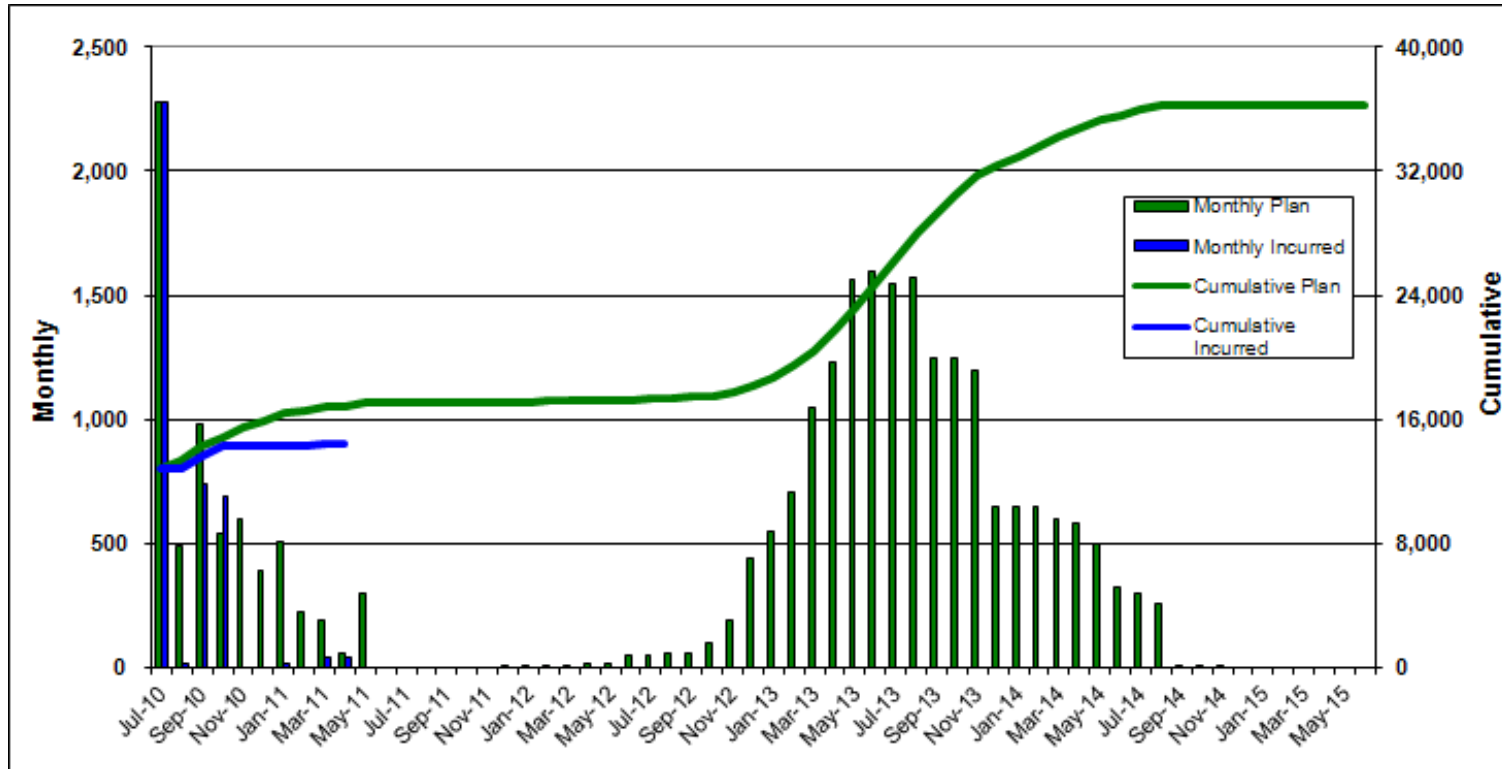


Notes:

1. Unallocated Contingency is not included.
2. Escalation is not included.

# LANDSIDE ELEMENT CASH FLOW

as of 4/30/2011

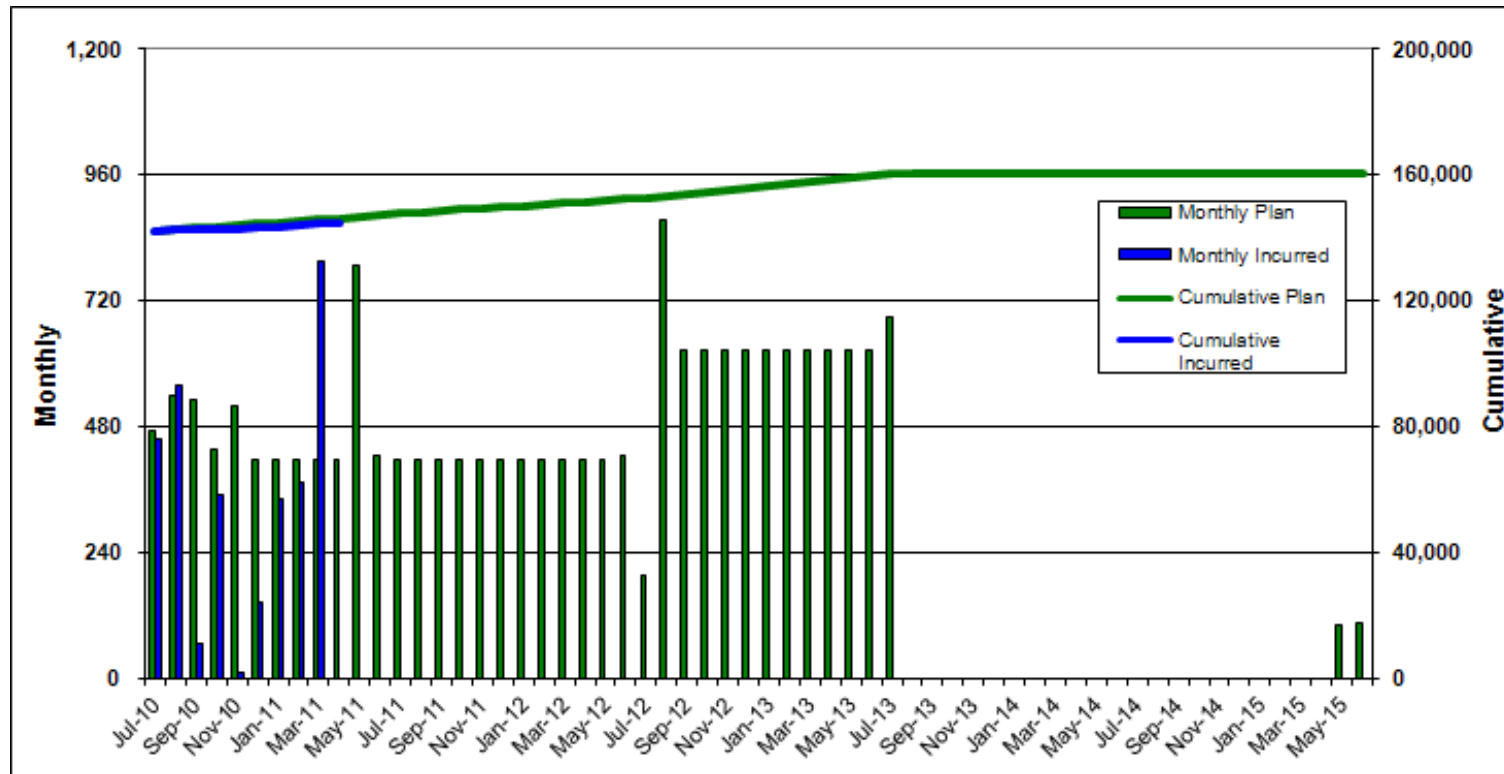


Notes:

1. Unallocated Contingency is not included.
2. Escalation is not included.

## RESIDENTIAL/SOUNDPROOFING ELEMENT CASH FLOW

as of 4/30/2011

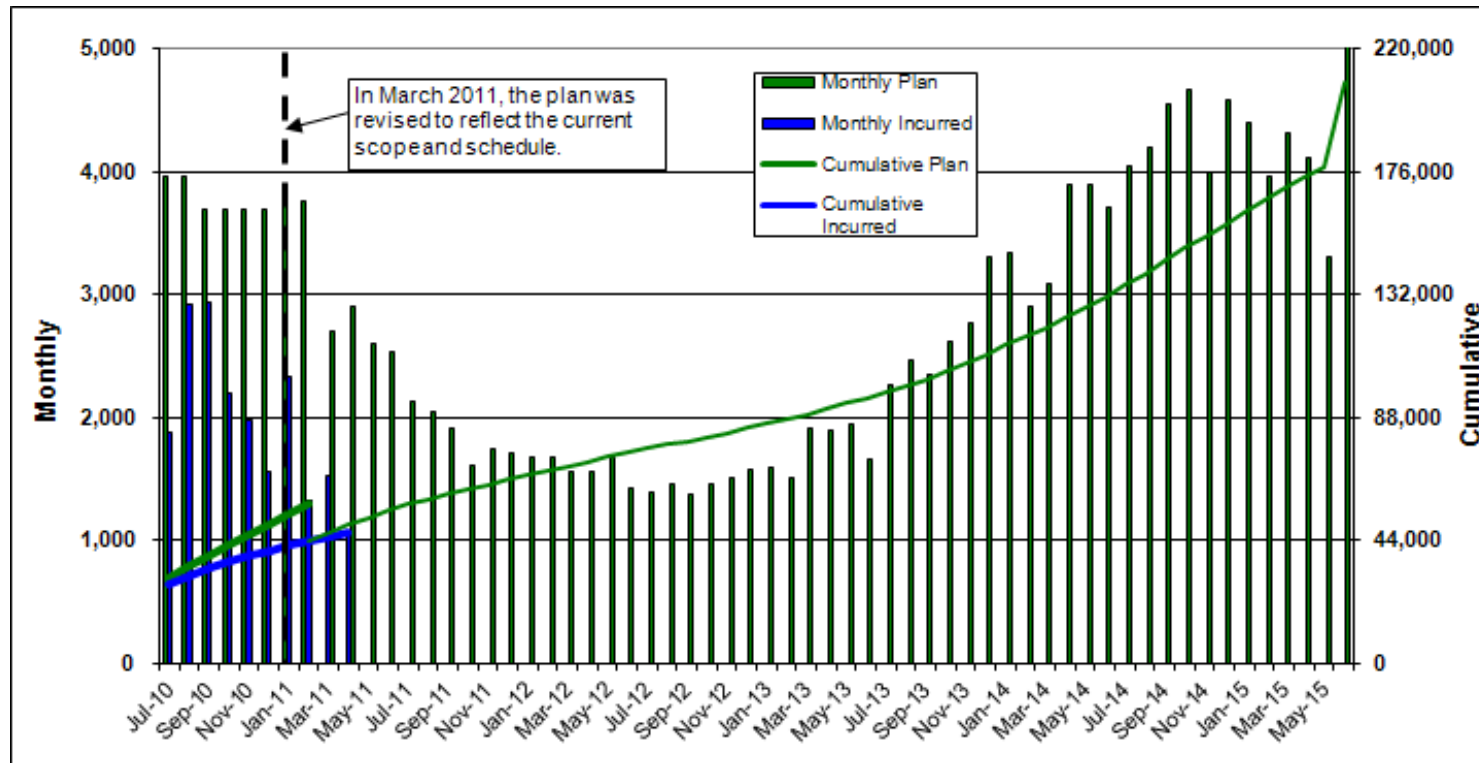


Notes:

1. Unallocated Contingency is not included.
2. Escalation is not included.

## TERMINALS ELEMENT CASH FLOW

as of 4/30/2011



Notes:

1. Unallocated Contingency is not included.
2. Escalation is not included.

### User's Guide - Change Order

The information provided herein is designed to furnish users of the Airport Development Group (ADG) Change Order Reports with greater knowledge and a better understanding of the composition of the various components of the change order report.

Change Orders - Process by which an adjustment is made to the total contract capacity.

CGMP Revision - Process by which the value of a CGMP is adjusted within the original total contract capacity. This process is employed by the Bradley West Element - Gates and Core projects in the administration of the Construction Management at Risk (CMAR) contracts.

## CHANGE ORDERS as of 5/31/2011

Element	Project	Contract	Change Order No	< \$150K	\$150K - \$1Mil	> \$1Mil	Notes
<b>Airside Element</b>							
<b>A010A - PAVEMENT MANAGEMENT PROGRAM - VNY TAXILANE A2 REHABILITATION AND RSA IMPROVEMENTS</b>							
	DA-4498		0002	\$63,855			Change Order #2 Final
<b>M101A - CROSSFIELD TAXIWAY PROJECT</b>							
	DA-4331		0059	\$0			Change Order #59



## CHANGE ORDERS - Continued as of 5/31/2011

Element	Project	Contract	Change Order No	< \$150K	\$150K - \$1Mil	> \$1Mil	Notes
<b>Bradley West Element</b>							
<b>DA-4337 - BRADLEY WEST GATES (DA-4337)</b>							
	DA-4337/CGMP02		0085	(\$29)			02.85 The City Tax was under-funded for CGMP 02.75
	DA-4337/CGMP02		0093	\$13,899			02.93 Paint wall, Grout Base Plates, Concrete Credit and K-Rail and Fencing at West Ramp
	DA-4337/CGMP02		0094	\$2,749			CD 0313 - IWBT Furred Wall at Gridline 8 at Arrivals Corridor
	DA-4337/CGMP02		0095	\$9,856			CD 0016R1 Wood and Concrete Structures of Unknown Origin (CCP1)
	DA-4337/CGMP02		0096	\$3,295			02.96 Ceiling Credit, OCIP Credits, Furr-Out Wall and Window Removal
	DA-4337/CGMP02		0097	(\$1,148)			IWBT Al Cal Arcade OCIP Credit
	DA-4337/CGMP02		0098	\$90,797			IWBT Temporary Interim Loading Dock
	DA-4337/CGMP02		0099	(\$1,274)			IWBT - ISEC OCIP Credits
	DA-4337/CGMP02		0100	(\$41,873)			IWBT - Griffith Company OCIP Credit
	DA-4337/CGMP02		0101	\$145,034			02.101 Connector Walkway IWBT
	DA-4337/CGMP02		0102	\$1,094			02.102 IWBT RFI 1909 Paint Fan Coil Unit
	DA-4337/CGMP02		0103	\$22,646			02.103 Genetec User Licenses, Additional Pipe Elbows for Fire Water Line and OCIP Credit
	DA-4337/CGMP02		0104		\$347,817		02.104 Installation of Sanitary Sewer Line
	DA-4337/CGMP02		0105	\$43,176			02.105 Auto Dialers for Defibrillators and Additional Bollards
	DA-4337/CGMP02		0106	(\$15,424)			02.106 IWBT Credit for Deletion of Curtain Wall at Bridge
	DA-4337/CGMP02		0107	\$82,962			02.107 IWBT Signage Package
	DA-4337/CGMP02		0108	\$12,128			02.108 IWBT Loading Dock Exterior Door Frame Replacement
	DA-4337/CGMP04		0044	(\$7,637)			04.44 JAMA Structura Observation Report Credit
	DA-4337/CGMP04		0046	\$103,355			04.46 Gates Design Notice 043 - Pier Modifications
	DA-4337/CGMP04		0047	(\$865,017)			OCIP Credit for J. T. Wimsatt
	DA-4337/CGMP04		0048	\$25,752			04.48 South Concourse Basement Wall Bracing
	DA-4337/CGMP05		0015	\$43,862			05.15
	DA-4337/CGMP06		0010	(\$30,703)			06.10 Gates Design Notice 043 - Pier Modifications - Taper Insulation Credit
	DA-4337/CGMP07		0023	\$1,774			07.23 Gates Louver Corrdination on Level 03 of South Concourse
	DA-4337/CGMP07		0024	\$5,790			07.24 BWG Locations of Chemical Pot Feeders, Emergency Eye Washers and Floor Drains
	DA-4337/CGMP09		0007	\$3,447			09.07 Gates Louver Coordination on Level 03 of South Concourse - Add and Delete Louvers

### Bradley West Element

#### DA-4337 - BRADLEY WEST GATES (DA-4337)

DA-4337/CGMP10	0010	\$83,263		10.10 Curtain Wall Back-up Steel Conflict with Structural Steel
DA-4337/CGMP10	0013	\$22,461		10.13 CD 0346 GDN 048 Additional Corrections to GDN 015, and CD 0470, RFI 3171 - Enclosure for Refrigerant Piping at Pier Stairs
DA-4337/CGMP10	0014	\$75,454		10.14 Miscellaneous Rated Enclosures at Level 3 Ceiling
DA-4337/CGMP10	0015	\$21,373		10.15 Level 5 Gates Diffuser Conflicts
DA-4337/CGMP12	0005	\$5,977		12.05 Pylon Embeds Changes on Approved Submittals 0675-BWG-1 and 0733-BWG-0
DA-4337/CGMP13	0001	\$2,399		CD 0463, RFI 3359, Corridor 3S2-05 Room Finish Type F-12

#### DA-4382 - BRADLEY WEST CORE (DA-4382)

DA-4382/CGMP02	0009	\$0		02.09 Allowance Consolidation - Backfill Core Perimeter
DA-4382/CGMP03	0028	\$47,472		03.28 TPAR: Clarification to Hydronic Piping Routing and Coring (CPCN 5115) and Grounding Cable Incorrect Size - Griffith Materials Only (CPCN 5258.02)
DA-4382/CGMP03	0029	\$31,217		03.29 TPAR Terminal 1 Chilled Water Pipe Repair
DA-4382/CGMP04	0040		\$228,275	04.40 Temporary Core Egress: Bulletin EP2-B5, CD-0118 - TEE Mechanical Ducts in the DWP Vault Change
DA-4382/CGMP04	0041	\$53,810		04.41 Various (MEP) Changes (Manual Pull Stations at Stairs 25 and 28 and TEE Exit Signs at Level 3 Stairs 17 and 21)
DA-4382/CGMP09	0006		\$751,798	09.06 BWC CD-0094 Core Compiled Set Bulletin 0 - RR Masonry

## CHANGE ORDERS - Continued as of 5/31/2011

Element	Project	Contract	Change Order No	< \$150K	\$150K - \$1Mil	> \$1Mil	Notes
<b>CUP Replacement Element</b>							
<b>Utilities &amp; Infrastructure Element</b>							
<b>U009A - AIRPORT RESPONSE COORDINATION CENTER (ARCC)</b>							
	DA-4462/000000		0009	\$15,467			Change Order #09
<b>Landside Element</b>							
<b>Residential/Soundproofing Element</b>							
<b>Terminal Element</b>							
<b>TBIT Renovation Element</b>							

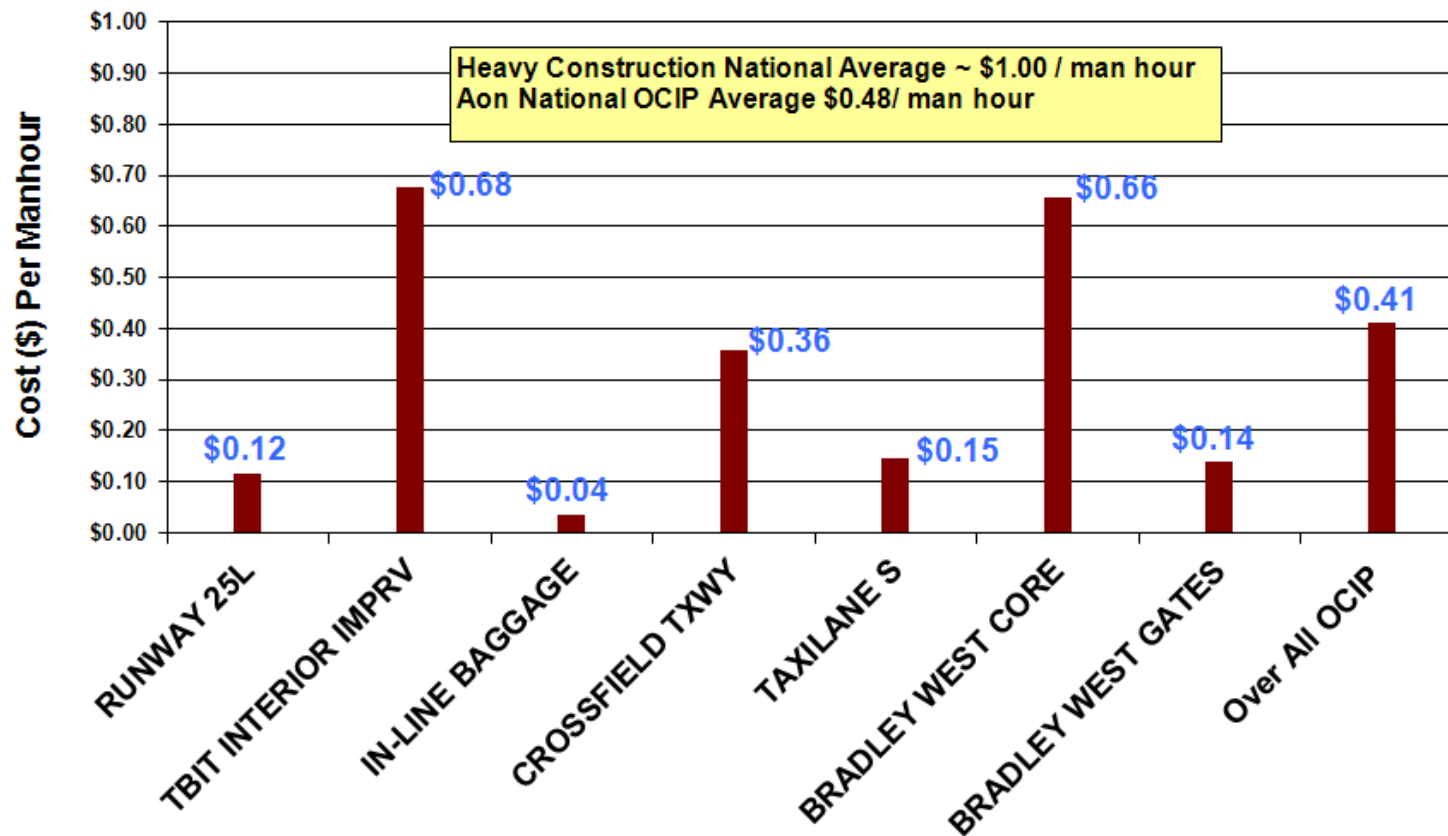
### Bradley West- Gates

CHANGE TYPE	EXECUTED CHANGES (CUMMULATIVE )	APPROVED CHANGES (CUMMULATIVE)	SUBTOTAL	% OF CONTRACT VALUE
DESIGN EVOLUTION	28,274,257	773,005	29,047,262	5.32%
DOCUMENT CORRECTION	4,622,358	2,630,390	7,252,748	1.33%
FIELD CONDITIONS	1,842,999	95,402	1,938,401	0.36%
OWNER BETTERMENT	405,451	(468,568)	(63,117)	-0.01%
CODE REQUIREMENT	237,328	202,444	439,772	0.08%
<b>TOTAL</b>	<b>35,382,393</b>	<b>3,232,673</b>	<b>38,615,066</b>	<b>7.08%</b>

### Bradley West- CORE

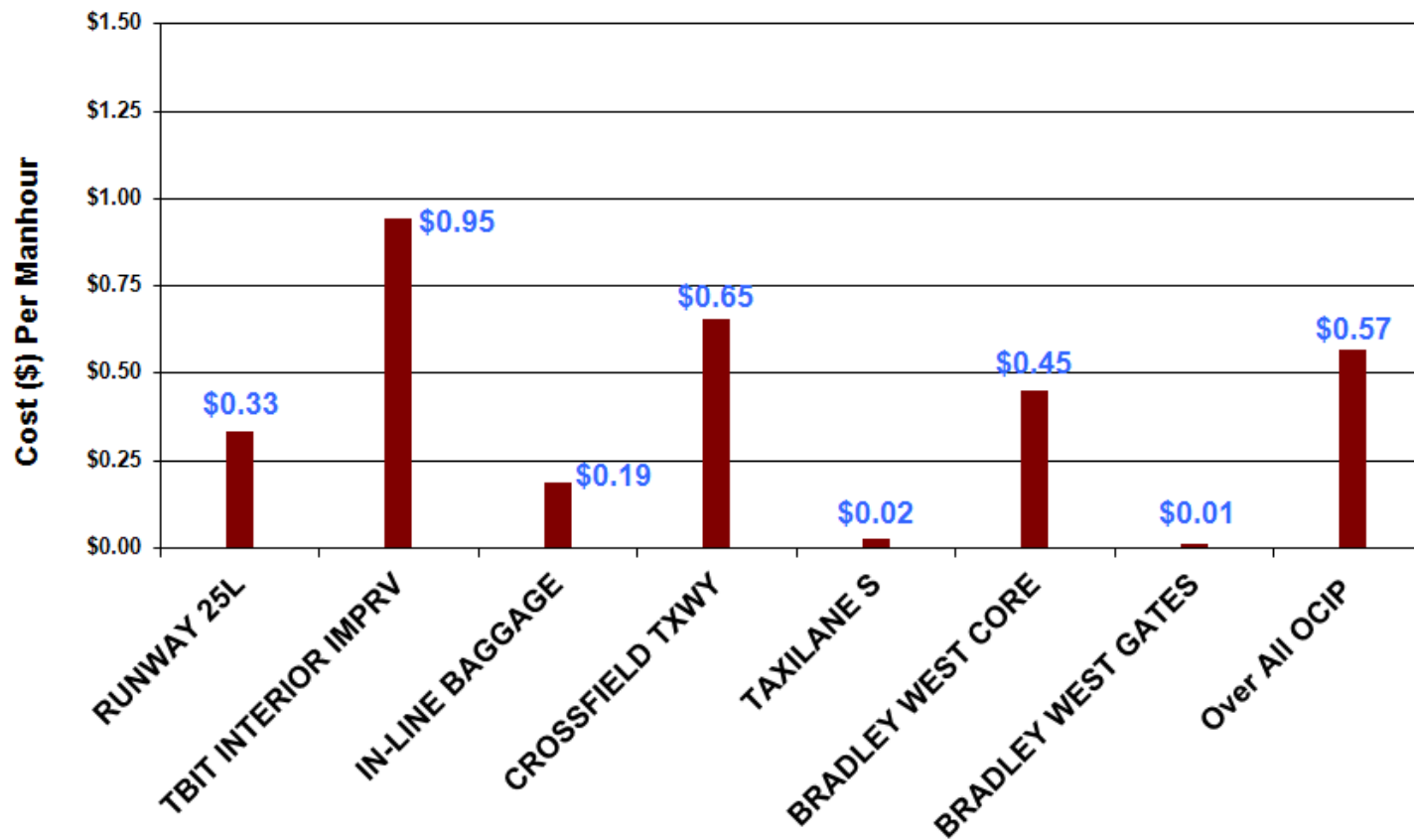
CHANGE TYPE	EXECUTED CHANGES (CUMMULATIVE)	APPROVED CHANGES (CUMMULATIVE )	SUBTOTAL	% OF CONTRACT VALUE
DESIGN EVOLUTION	24,539,120	1,231,107	25,770,227	4.41%
DOCUMENT CORRECTION	247,906	1,420,488	1,668,394	0.29%
FIELD CONDITIONS	3,427,689	112,130	3,539,819	0.61%
OWNER BETTERMENT	2,161,546	24,226	2,185,772	0.37%
CODE REQUIREMENT	2,979,746	191,931	3,171,677	0.54%
<b>TOTAL</b>	<b>33,356,007</b>	<b>2,979,882</b>	<b>36,335,889</b>	<b>6.22%</b>

**LAWA OCIP Workers Compensation Loss Performance**  
 - as of April 30, 2011 -

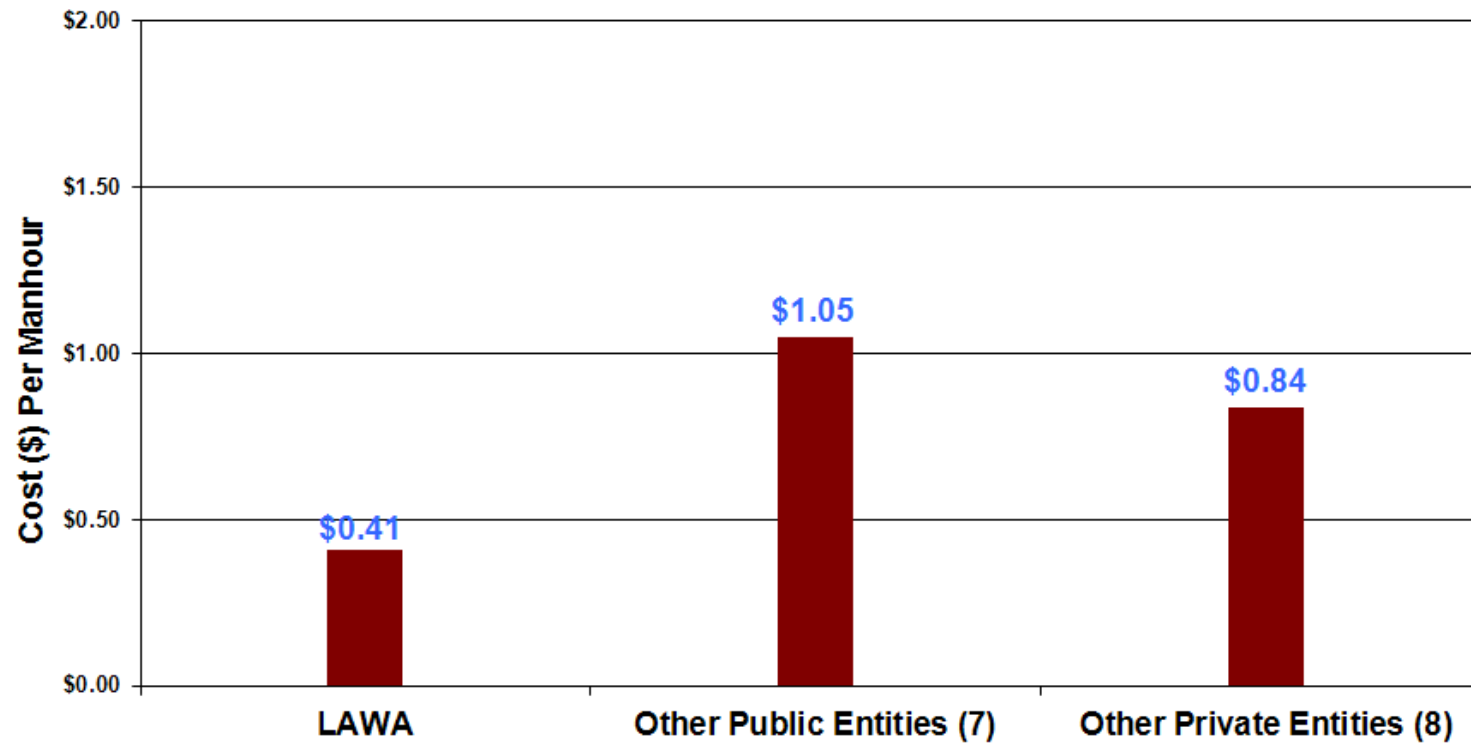


**OCIP - Continued**  
as of 4/30/2011

**LAWA OCIP General Liability Loss Performance**  
- as of April 30, 2011 -



**Current Large OCIP Projects  
Comparison of Workers Comp Costs Per Manhour**





## MWBE/DBE Subcontractor Utilization Summary Report as of 4/30/2011

Firm	Contract No.	DBE or M/WBE Contract	Proposed Level of Participation	Achieved Participation to Date*		Remarks
				M/WBE	DBE	
AECOM Technical Services, Inc.	DA-4260	DBE	12.00 %	N/A %	20.04 %	
CH2M Hill	DA-4414	M/WBE	22.00 %	32.99 %	N/A %	
Clark / McCarthy Joint Venture	DA-4554	M/WBE	20.10 %	4.74 %	N/A %	
Fentress Architects	DA-4274	DBE	9.30 %	15.09 %	5.91 %	
Flatiron West, Inc.	DA-4398	DBE	1.00 %	0.77 %	12.53 %	
Griffith Company	DA-4338	M/WBE	6.60 %	2.30 %	N/A %	
Griffith Company	DA-4478	M/WBE	23.70 %	23.37 %	N/A %	
Griffith Company	DA-4498	DBE	0.35 %	0.58 %	0.00 %	
Hatch Mott MacDonald, LLC	DA-4275	DBE	11.63 %	N/A %	19.99 %	
Hellmuth, Obata + Kassabaum, Inc.	DA-4313	M/WBE	25.00 %	38.76 %	N/A %	
Jacobs Project Management Co.	DA-4417	M/WBE	25.00 %	0.00 %	N/A %	
KDG Dev + Construction Consulting	DA-4418	M/WBE	20.00 %	0.00 %	N/A %	
Parsons Transportation Group, Inc.	DA-4415	M/WBE	23.00 %	54.27 %	N/A %	
Paslay Management Group	DA-4324	M/WBE	10.00 %	17.17 %	N/A %	
Post, Buckley, Schuh & Jernigan, Inc.	DA-4515	DBE	24.00 %	N/A %	29.91 %	
Praxis Integrated Communications	DA-4541	M/WBE	10.00 %	0.00 %	N/A %	
Technion Contractors	DA-4462	M/WBE	0.16 %	0.13 %	N/A %	
Vanir Construction Management, Inc.	DA-4416	M/WBE	20.00 %	18.08 %	N/A %	
W.E. O'Neil	DA-4371	M/WBE	6.80 %	10.26 %	N/A %	
Walsh Austin Joint Venture - Pre-Construction (Gates)	DA-4337	M/WBE	20.00 %	30.53 %	N/A %	
Walsh Austin Joint Venture - Construction (Gates)	DA-4337	M/WBE	14.00 %	12.80 %	N/A %	
Walsh Austin Joint Venture - Pre-Construction (Core)	DA-4382	M/WBE	20.00 %	25.98 %	N/A %	
Walsh Austin Joint Venture - Construction (Core)	DA-4382	M/WBE	14.00 %	8.28 %	N/A %	
<b>Total Participation:</b>	<b>N/A</b>	<b>N/A</b>	<b>N/A</b>	<b>10.40%</b>	<b>5.71%</b>	
<b>Total Combined Participation:</b>	<b>N/A</b>	<b>N/A</b>	<b>N/A</b>	<b>16.12%</b>		

\*Achieved Participation to Date includes progress in the pledged program and progress outside of the pledge.

