



# Airports Development

Executive Management

Program Status Report

May 31, 2010

---

## TABLE OF CONTENTS

Project Status	_____	3
Projects in Definition	_____	42
Schedule	_____	52
Financial	_____	61
OCIP	_____	83
MWBE/DBE	_____	86

## ELEMENT OVERVIEW

### **Purpose**

This report is a tool to provide status of the Capital Projects for the Airports Development Group. The report presents status per project followed by the Master Program Schedule, a Financial section with Budget, Cash Flow and Change Orders, OCIP, MWBE/DBE, and a section listing Projects in Definition.

### **Airside Element**

The Airside Element consists of multiple projects necessary for accommodating the movement of large aircraft between the north and south runways; reconfiguring traffic movement to accommodate the Tom Bradley International Terminal (TBIT) expansion and modernization program; and provide airfield improvements as required by Airfield Operations, the Federal Aviation Authority and other Federal and State regulatory bodies.

### **Bradley West Element**

The Bradley West Element provides for certain improvements identified in the approved LAX Master Plan, specifically related to development of new aircraft gates at the Tom Bradley International Terminal. The new gates will support the airport's ability to effectively and efficiently accommodate new large aircraft, such as the Airbus A380, Boeing 747 and Boeing 747-8. In addition, the project calls for substantial improvements related to the concourses and central core area of the Tom Bradley International Terminal, including:

- construction of new north and south concourses at the terminal, west of the existing concourses, which would be removed;
- construction of eight aircraft gates and associated loading bridges and apron areas, along the west side of the new terminal concourses;
- relocation and consolidation of existing aircraft gates along the east side of the Tom Bradley Terminal;
- renovation and enlargement of the existing U.S. Customs and Border Protection areas within the central core of the terminal; and
- construction of the secure passenger corridors between Terminals 3 and 4, and the Bradley Terminal.

---

## ELEMENT OVERVIEW - Continued

### **Central Utility Plant (CUP) Replacement Element**

The CUP Replacement Element includes replacing the existing CUP, constructed in 1961, and the co-generation facility, brought into service in 1985, which are considered obsolete and inefficient relative to present-day technology, the distribution network between the CUP and the terminals, and various mechanical/electrical infrastructure improvements within the terminals.

### **Utilities and Infrastructure Element**

These capital improvement projects are critical utility and infrastructure elements that support Terminal and Airport operations within the Central Terminal Area (CTA). Current construction projects include the In-Line Baggage Screening System program consisting of the construction of fully integrated Transportation Security Administration (TSA) screening equipment in Terminal 3 and removal of lobby machines, plus, the IT Fiber Loop Backbone project which will provide new connectivity between all Terminals and the Telecommunication Building.

### **Landside Element**

The Landside Element undertakes capital projects designed to provide for the efficient and effective movement of people through the airport; and to provide convenient parking for individuals using the airport. Landside projects are typically related to parking lots, public transportation, train stations, tank farms, warehouse and cargo areas and access roads and perimeter fencing.

### **Residential / Soundproofing Element**

LAWA has implemented a voluntary Airport Residential Soundproofing Program (RSP) for aircraft noise impacted areas in the City of Los Angeles. This program is for impacted homes adjacent to the Los Angeles International Airport (LAX) and Van Nuys (VNY).

---

## ELEMENT OVERVIEW - Continued

### **Terminals Element**

Most of LAX's Terminals have been serving their purpose without major renovations or modernization efforts over the years. As needs change, the Terminal spaces and structures need repairs, upgrades, modernization, and standardization to satisfy these changing demands. From modernizing elevators and escalators with standardized devices to updating fire/life safety systems, the Terminals Element is focused on implementing these necessary improvements.

### **TBIT Renovation Element**

The Tom Bradley International Terminal (TBIT) was designed in 1982 and constructed for the opening of the 1984 Olympics that were held in Los Angeles. In the intervening years, other than minor improvements and concessions additions, the terminal had not been remodeled or modernized and did not provide comparable standards, amenities, and aesthetics realized at other international and national airports around the world. The aesthetics and finishes at TBIT were based on 1980s design. The lighting in most areas was not up to current standards, the paging system was inadequate, and some areas did not meet current building code requirements including the Americans with Disabilities Act (ADA). Contact gates at TBIT were inadequate to accommodate the "New Large Aircrafts", e.g. Airbus A380. Lastly, due to the events following September 11, 2001, the Transportation Security Administration (TSA) mandated requirements for in-line 100% checked baggage screening of the outbound baggage system at TBIT. The proposed project addresses these deficiencies and new security baggage screening requirements through a comprehensive modernization and upgrade of TBIT.

### **Projects in Definition**

This section lists the projects that are in definition and are being further developed to ensure a shared understanding of purpose, objective, scope, funding and mandate. Projects in Definition are by their very nature subject to change in scope, schedule and cost as the purpose and objectives are agreed upon and business analyses are conducted.

---

## AIRSIDE ELEMENT - Construction Support Facilities (M209A)

### **Project Description**

The project includes the construction of a new aircraft parking ramp/block, new emergency exits for American Airlines Maintenance Hangar, airfield security fencing, building modifications, and other miscellaneous construction activities as may be required.

### **Planning and Programming Status**

Project Definition is complete.

### **Design Progress**

Design is 100% complete.

### **Construction Progress**

First construction contract awarded to Griffith Construction on April 21, 2009.

Notice to Proceed issued June 29, 2009.

Construction is 80% complete.

### **Budget Status**

This project is anticipated to complete on budget.

### **Schedule Status**

The project's original completion date of May 25, 2010 has been extended to August 23, 2010.

### **Issues**

## AIRSIDE ELEMENT - Crossfield Taxiway Project (M101A)

### **Project Description**

The project entails the construction of a 3,437-foot-long by 100-foot-wide taxiway that connects Taxiway 'B' on the south and Taxiway 'E' on the north. To facilitate this construction, there will be removal of existing deteriorated concrete pavement and the removal of asphalt pavement replaced with Portland Cement Concrete (PCC) and asphalt concrete pavement. This project also constructs a new parallel service road and a replacement apron for Remain Overnight (RON) and the following facilities:

Realignment of World Way West and two bridges over the road; one for aircraft crossing as a part of taxiway C13 and the other for vehicular traffic;

Taxiway centerline electrical, lighting and signage;

Pavement markings, including centerline, edge striping and edge reflectors; and

Installation of redesigned drainage and modifications to existing utilities.

### **Planning and Programming Status**

Project Definition is complete.

### **Design Progress**

Design is 100% complete.

### **Construction Progress**

Construction contract awarded to R & L Brosamer Inc. on March 23, 2009.

Notice to Proceed issued May 11, 2009.

Taxiway 'R' opened on May 24, 2010.

Construction is 85% complete.

### **Budget Status**

Contingency may be allocated to fund budget variance.

### **Schedule Status**

The remainder of the project which includes Remain Overnight (RON) is anticipated to complete August 2010

### **Issues**

## **AIRSIDE ELEMENT - Crossfield Taxiway Project (M101A) - Continued**

- \* Additional change orders due to owner requested changes are currently under negotiations.
- \* Wash Rack Design and Construction - Recent environmental code changes require full recycling system to be installed for the wash rack facilities. The RON system consists of four 10' deep vaults; two service manholes; underground oil-water separator; underground pump lift station; compressed air, water, and sewer piping; full recycling system, and associated electrical equipment. Contract extension required due to procurement and installation/testing of recycling system.
- \* North Outfall Replacement Sewer (NORS) Manhole - Sewer manhole for deep NORS line running under the south end of RON needs to be retrofitted for aircraft loading and raised to proposed grade.
- \* Communication Junction Structure 2 Retrofit - Deep foundations; increased wall and roof reinforced sections, and replacing MH cover is required retrofit solution. Existing Junction Structure were located in non-aircraft movement area and due to new taxiway construction it was required to retrofit it and make it aircraft load rated. Existing as-built drawings could not provide adequate design info until the structure was exposed during construction. The structure hosted numerous communication lines that need to be worked around.
- \* Taxiway E-11 Utility Phasing - Once Taxiway E-12 is constructed and become available for AA and Qantas use to access their apron, E-11 needs to be closed and utilities installed across. Additional mobilization and jet fuel line flushing are required to accomplish the task. Original contract called for the construction of Taxiways E-12 & closure E-11 simultaneously; therefore, American Airlines and Qantas would not have access to their apron. In order not to impact the airlines operations, additional phase to the project needed to be added.



---

## **AIRSIDE ELEMENT - LAX Aircraft Rescue and Fire Fighting Facility (M107A)**

### **Project Description**

The new Aircraft Rescue and Fire Fighting Facility (ARFF) is proposed to be constructed as a replacement for the existing Fire Station No. 80. This new facility will be located on World Way West just west of Remain Over Night (RON) aircraft aprons situated relative to the mid-points of the outmost runways (Runway 6L/24R on the north and Runway 7R/25L on the south). The proposed ARFF would provide approximately 27,500 square feet of administrative office area and station living quarters within a 2-story structure, six bays for emergency vehicles along with a service bay, storage area for various emergency response equipments, and briefing and training rooms.

### **Planning and Programming Status**

Project Definition is complete.

### **Design Progress**

Design is 100% complete.

### **Construction Progress**

Construction contract awarded to Tobo Construction on June 10, 2009.  
Administrative Notice to Proceed issued July 10, 2009.  
Construction is 62% complete.

### **Budget Status**

This project is tracking on budget.

### **Schedule Status**

This project is anticipated to complete September 2010 which is currently on schedule.

### **Issues**

## AIRSIDE ELEMENT - Bradley West - Aprons (M205A)

### **Project Description**

The Bradley West Aprons project contains an East and West component. The Bradley West Aprons project consists of approximately 34,000 square yards of pavement and associated drainage covering the aprons on the west side of the north and south Concourses as well as the apron west of the Core. This apron construction includes all grading, utilities, airfield signage and lighting; construction of LADWP power and communication ductbanks; and the LAWA power and communication ductbanks.

The Bradley East Aprons project entails construction of approximately 121,000 square yards of pavement and associated drainage from the edge of the new Concourses to the edge of Taxilanes C10/D10. It includes all grading, drainage, utilities, airfield signage and lighting; construction of LADWP power and communication ductbanks; and the LAWA power and communication ductbanks.

### **Planning and Programming Status**

Project Definition is complete.

### **Design Progress**

West Aprons awarded design is 100% complete.  
East Aprons design is 50% complete.

### **Construction Progress**

West Aprons - Anticipated Schedule - February 6, 2011 through February 1, 2012  
The Bradley West Gates and Core contracts awarded to Walsh-Austin.

East Aprons -  
No construction contracts awarded.

### **Budget Status**

This project is tracking on budget.

### **Schedule Status**

This project progressing on schedule.

### **Issues**

## AIRSIDE ELEMENT - Taxilane 'S' (M204A)

### **Project Description**

This project undertakes the relocation of certain ancillary and support facilities; and constructs a 3,785-foot long Taxilane to connect Taxiway 'B' on the south and Taxiway 'E' on the north. Taxilane 'S' will be constructed as part of a 400 foot wide Portland Cement Concrete (PCC) paved strip which will be the first part of the future Dual Taxilane / Taxiway System between the proposed Midfield Satellite Concourse and the Tom Bradley International Terminal. The centerline is located 242 feet west of the existing Taxiway 'Q' centerline. A 169-foot-Object Free Area (OFA) will be provided on the east side of the Taxilane 'S' centerline in accordance with the FAA approved Airport Layout Plan (ALP). This construction also includes the relocation of fuel lines and other utilities, all grading, airfield signage and lighting, construction of LADWP power and communication ductbanks; and the LAWA power and communication ductbanks. Additionally, Taxiway D will be extended approximately 1,000 feet west from Taxiway Q.

The project also includes the construction of approximately 60,000 square yards of pavement and associated drainage covering the aprons on the west side of the north and south Concourses as well as the apron west of the Bradley Core. This apron construction includes all grading, utilities and airfield signage; construction of LADWP power and ductbanks; and the LAWA power and communications ductbanks.

### **Planning and Programming Status**

Project Definition is complete.

### **Design Progress**

Design is 100% complete.

### **Construction Progress**

Construction contract awarded to Flatiron West, Inc. on December 7, 2009.

Administrative NTP issued on December 18, 2009.

NTP for construction was issued for March 1, 2010.

Construction is 5% complete.

### **Budget Status**

This project is anticipated to complete on budget.

### **Schedule Status**

Taxilane 'S' is anticipated to open May 2011.

This project is anticipated to complete February 2012 which is currently on schedule.

## AIRSIDE ELEMENT - Taxilane 'S' (M204A) - Continued

### Issues

- \* HMM finalizing design and LADBS plan checks for guard post 5 relocation, which may impact the construction schedule.
- \* Revisions to the new natural gas line are required and may be combined with providing new natural gas service to the Bradley West across new Taxilane 'S'.
- \* HMM has not obtained the B-permit for the new sanitary sewer connections in Phase 3A and 3B (south end of TWY Q). The NTP for phase 3A was issued 6/01/10, and this item will have cost and schedule impacts.
- \* The new jack and bore pit for 6 new fuel lines was located on existing Service Road S, which was unacceptable, due to maintaining vehicle traffic. The jacking pit was moved 70 feet west, which extends the jacking operation of the 6 new fuel lines.
- \* Additional contaminated soil will need to be removed from the project work area. Total costs may go beyond the bid item allowance amount of \$2,000,000
- \* LAWA management has directed that the DWP underground duct banks be accelerated and completed by a date certain in order to accommodate the Bradley West construction schedule

## AIRSIDE ELEMENT - Taxilane 'T' (M306A)

### **Project Description**

The project consists of the construction of a 3,166-foot long Taxilane to connect Taxiway 'C' on the south and Taxiway 'D' on the north. Taxilane 'T' will be constructed as part of a 300 ft. wide Portland Cement Concrete (PCC) paved strip which will be the second part of the future Dual Taxilane / Taxiway System replacing existing Taxiways 'Q' and 'S', west of reconfigured Tom Bradley International Terminal (TBIT). The Taxilane 'T' centerline is located 818 feet west of the existing Taxiway 'Q' centerline. A 169-foot-Object Free Area (OFA) will be provided on the west side of the Taxilane 'T' centerline in accordance with the FAA approved Airport Layout Plan (ALP). This construction also includes the Taxilane "T" Service Road, the relocation of fuel lines and other utilities, all grading, airfield signage and lighting, construction of LADWP power ductbanks; and the LAWA power and communication ductbanks. Includes associated projects.

### **Planning and Programming Status**

Project Definition is complete.

### **Design Progress**

No design is awarded.

### **Construction Progress**

No construction contracts awarded.

### **Budget Status**

This project is tracking on budget.

### **Schedule Status**

This project is progressing on schedule.

### **Issues**

---

## AIRSIDE ELEMENT - Demolition of Existing Concourses (M210A)

### **Project Description**

Upon completion of the new Bradley West Concourses, this project includes demolition of the existing concourses with the exception of Gate 123, demolition of any existing utilities and restores the site to an appropriate state for Apron construction.

### **Planning and Programming Status**

Project Definition is complete.

### **Design Progress**

Design is 50% complete.

### **Construction Progress**

Construction contract awarded to Walsh-Austin Joint Venture on November 4, 2009.

### **Budget Status**

This project is tracking on budget.

### **Schedule Status**

This project is progressing on schedule.

### **Issues**

---

## AIRSIDE ELEMENT - American Airlines Settlement (M309A)

### **Project Description**

This effort funds a Memorandum of Agreement (MOA) between LAWA and American Airlines (AA) related to the Right of Entry and Construction Commencement Agreement between LAWA and AA. AA will make necessary improvements on a substituted premises.

### **Planning and Programming Status**

Project Definition is complete.

### **Design Progress**

Design contract awarded to Hatch Mott MacDonald.  
Design is 100% complete.

### **Construction Progress**

Construction is complete

### **Budget Status**

This project is anticipated to complete on or under budget.

### **Schedule Status**

This project is anticipated to complete on or ahead of schedule.

### **Issues**

\* AA submitted a claim for additional funding due to unforeseen conditions. LAWA approved a portion of the claim. AA has indicated they will be submitting additional backup to support full settlement.

## **AIRSIDE ELEMENT - Southside Airfield Improvement Program - Airfield Intersection Improvements - Phase 2 (A001A)**

### **Project Description**

This project consists of improving various airfield intersections and modifying service road locations to provide safe taxiing routes for current large aircraft and future New Large Aircraft (NLA). This second phase includes widening of 5 intersections throughout the north and south airfield complex at LAX, specifically in the vicinity of Taxiways E and C and Runways 24L and 25R. The project will include intersection pavement and shoulder reconstruction and relocation of all affected taxiway lighting and signage, demolition of existing vaults 2N and 2S, and construction of a new electrical vault.

### **Planning and Programming Status**

Project Definition is complete.

### **Design Progress**

Design is 100% complete.

### **Construction Progress**

Construction contract awarded to R & L Brosamer, Inc. on June 2, 2008.  
Notice to Proceed issued July 1, 2008.  
Construction is 99% complete.

### **Budget Status**

This project is anticipated to complete on or under budget.

### **Schedule Status**

This project is anticipated to complete on schedule.

### **Issues**

\* Certificate of Occupancy for vault expected to be issued on June 11, 2010.



---

## **AIRSIDE ELEMENT - Pavement Management Program - VNY Taxilane A2 Rehabilitation and RSA Improvements (A010A)**

### **Project Description**

This project will rehabilitate the existing asphalt concrete pavement for Taxilane A2 and construct a dual taxilane, among other improvements. Additionally, this project will improve airfield lighting and signage within the Runway 16L/34R Safety Area (RSA).

### **Planning and Programming Status**

Project Definition is complete.

### **Design Progress**

Design is 100% complete.

### **Construction Progress**

No construction contracts awarded.

### **Budget Status**

This project is anticipated to complete on budget.

### **Schedule Status**

This project is out to bid and bids are currently due on June 17, 2010

### **Issues**

## **BRADLEY WEST ELEMENT - Bradley West Gates (M201A)**

### **Project Description**

The project consists of the construction of new double-loaded North and South Concourses at Tom Bradley International Terminal (TBIT). The configuration of the concourses will be based upon the approved aircraft parking layout consisting of nine (9) A380 gates and five (5) Airplane Design Group (ADG) V gates and three (3) narrow-body gates. In addition, the work will consist of constructing approximately 540,000 sq ft of space for passenger services (concessions, toilets etc.), building systems (mech/elect/plumbing), building maintenance, airline operations, retail/food service concessions, concessions storage areas, back of house secured circulation space and airline lounges. The project will also include Building Systems (pedestrian transportation systems, HVAC, electrical and plumbing, drainage, lighting), Telephone System, Life Safety Systems (PA and smoke/fire detection, alarm and sprinkler) and Terminal Systems such as Electronic Visual Information Display System (EVIDS), baggage conveyance, building management systems, access control, intrusion alarm, etc.

### **Planning and Programming Status**

Project Definition is complete.

### **Design Progress**

Design is 99% complete.

### **Construction Progress**

Pre-Construction contract awarded to Walsh-Austin Joint Venture on June 10, 2009.  
Notice to Proceed for the Pre-Construction services was issued on June 11, 2009.  
Construction contract awarded to Walsh-Austin Joint Venture on November 4, 2009.  
Interim West Bus Terminal foundations are underway.  
Utility relocations on West side and excavation is underway.  
Jack and bore pits at gates 106 & 119 has commenced.

### **Budget Status**

This project is anticipated to complete on or under budget.  
Component Guaranteed Maximum Price 01 through 06 have been approved by the Board.  
Buy out is 80% complete (inclusive of OCIP). Trade packages currently forecast to be 2% over budget a net gain of 3% since last month primarily resulting from the electrical package.

### **Schedule Status**

Construction Notice to Proceed January 28, 2010  
Milestone: West Gates Substantial Completion Target Date: December 12, 2012 Forecast Date: December 12, 2012

---

## BRADLEY WEST ELEMENT - Bradley West Gates (M201A) - Continued

### Issues

Phasing milestones have been adjusted.

## **BRADLEY WEST ELEMENT - Bradley West Core Improvements (M203A)**

### **Project Description**

This project will provide improvements to the Federal Inspection Service (FIS) facilities in Tom Bradley International Terminal (TBIT) and allow for the development of new 693,000 sf improved departure level (post security) passenger amenities, including new restrooms, concessions, airline lounges, and administrative offices within TBIT's existing north and south concourses; renovates, improves and enlarges the space used by the FIS and the Customs and Border Patrol (CBP); constructs secure/sterile passenger corridors between TBIT and Terminals 3 and 4; and renovates and improves existing facilities throughout TBIT including re configuration of the security screening checkpoint.

### **Planning and Programming Status**

Project Definition is complete.

### **Design Progress**

Design is 83% complete.

### **Construction Progress**

- Core Enabling work has commenced this month.
- Temporary Core Egress site exploration activities have begun.
  - Barricades for the Loading Dock/Fire Control Building
  - Core Standpipe conversion is underway.

### **Budget Status**

Component Guaranteed Maximum Price 01 through 05 have been approved by the board.  
Buy out is 32% complete (OCIP included) and is continuing favorably. The trade packages are currently forecast to be 3% under budget.

### **Schedule Status**

Construction Notice to Proceed March 3, 2010  
Milestone: Core Substantial Completion Target Date: December 12, 2012    Forecast Date: December 12, 2012

### **Issues**

Phasing milestones have been adjusted.

---

## **BRADLEY WEST ELEMENT - Construction Traffic Mitigations (M203B)**

### **Project Description**

The general scope of work involves improving roadway capacity at the two intersections identified by the Bradley West Project Environmental Impact Report as being affected by the Bradley West construction activities and enhancing safety at the future construction contractor parking area.

### **Planning and Programming Status**

Project Definition is complete.

### **Design Progress**

Design is 90% complete.

### **Construction Progress**

No construction contracts awarded.  
Advertised Request for Bids March 4, 2010.  
Pre-Bid Meeting held March 23, 2010.  
Three Bids were received on May 20, 2010.

### **Budget Status**

This project is anticipated to complete on or under budget.

### **Schedule Status**

This project is anticipated to be in construction Fall 2010 - Spring 2011.

### **Issues**

---

## BRADLEY WEST ELEMENT - Art In Public Places (M308A)

### **Project Description**

The program, part of the City of Los Angeles commitment to the community, commissions local artists to produce original artwork for public places. The City passed a law in 1989 allocating one percent of all capital improvement costs to commission art in public places. The Department of Cultural Affairs administers this program through its Public Art Division, aiming to utilize this one percent to contribute enduring, contemporary art experiences to public facilities in the City.

### **Planning and Programming Status**

Proposals from six nominated Los Angeles-based artists have been received and are being reviewed by the Art Oversight Committee (AOC).

### **Design Progress**

No design contract awarded.

### **Construction Progress**

No construction contract awarded.

### **Budget Status**

This project is anticipated to complete on or under budget.

### **Schedule Status**

This project is anticipated to complete on or ahead of schedule.

### **Issues**

## **CUP REPLACEMENT ELEMENT - Central Utility Plant (C001A)**

### **Project Description**

The project provides a replacement Central Utility Plant (CUP) to supply cooling, hot-water and chilled water to the Central Terminal Area (CTA); the required chillers, pumps generators, boilers and piping to produce and distribute the hot and cold water; and gas turbine driven generators with heat recovery steam generators (co-generation). The project also includes:

Temporary Power and Associated Relocations Project (TPAR) includes construction of a new substation to feed power to the existing CUP and installation of replacement switchgear to allow demolition of the CUP Maintenance Shop building. This work also includes installing new underground utilities to replace the existing utilities with the footprint of the new CUP.

The utility distribution system to be provided as part of this project includes interconnecting with existing piping as well as providing completely new services to new terminals and replacement or bypassing of some existing piping.

Demolition of the existing CUP, cooling towers, an electrical substation and existing maintenance buildings located at the footprint of the new CUP.

Facility Management and Control System (FMCS) located in the control room and related control equipment to be furnished for installation in the mechanical rooms of the terminals.

### **Planning and Programming Status**

Project Definition is complete.

### **Design Progress**

Design is complete for solicitation of a design build contractor.

### **Construction Progress**

No construction contracts awarded.

The final technical proposals are due June 22, 2010; and the final proposal evaluation will be completed June 23, 2010 through July 8, 2010.

### **Budget Status**

This Design Build contract is under procurement and upon award is anticipated to be on budget.

### **Schedule Status**

With the May 6, 2010 issuance of Addendum # 9, the RFP technical procurement has been extended to allow the bidders enough time to properly submit their technical submittal. This action has currently impacted the project schedule by 49 days, however upon contract award, this schedule slip may be mitigated.

---

## CUP REPLACEMENT ELEMENT - Central Utility Plant (C001A) - Continued

### Issues

LAWA shortlisted four firms to submit technical proposals. Following the submittal and review of the first round of technical proposals, one of the firms indicated they are withdrawing from the competition and will not submit a final technical proposal.



---

## UTILITIES & INFRASTRUCTURE ELEMENT - Security Program In-Line Baggage Screening Systems (T3) North (U001A)

### **Project Description**

This project provides for in-line baggage screening system in LAX Terminal 3 pursuant to the requirements of TSA. This project's original budget also included construction of an in-line baggage screening system at Terminals 1 and 2. This project includes replacement of the existing airline baggage handling spaces; construction of new baggage screening rooms; replacement of the outbound baggage conveyor systems; and installation/integration of TSA-provided Explosive Detection System (EDS) machines. Also included are Explosives Trace Detection (ETD) work stations, On-screen Resolution (OSR) Control Room and CCTV systems.

### **Planning and Programming Status**

Project Definition is complete.

### **Design Progress**

Design is 100% complete.

### **Construction Progress**

Construction contract awarded to Swinerton Builders May 16, 2007.

Construction is complete and project is in final stage of close-out. Anticipate final change order and construction contract acceptance to occur in June.

### **Budget Status**

This project is anticipated to complete under budget.

### **Schedule Status**

This project was completed on schedule.

### **Issues**

None.

---

## UTILITIES & INFRASTRUCTURE ELEMENT - Airport Response Coordination Center (ARCC) (U009A)

### **Project Description**

This project will provide a centralized response coordination center on the 4th floor of the existing Badging Building located at 7333 World Way West at Los Angeles International Airport (LAX). The project will improve efficiency and communication for day to day operations and response to incidents by collocating various shared operational functionalities into one consolidated location. The new Airport Response Coordination Center will co-locate Airfield Operations, Terminal Operations, Construction and Maintenance, non-emergency Airport Police functions, and traffic management staff into a joint use facility. This new office environment, will utilize information technology for audio, video, CCTV, voice, network, Cable TV connections, PCs, and associated video wall and peripherals to improve situational awareness and communication among various Divisions and staff at LAX.

### **Planning and Programming Status**

Project Definition is complete.

### **Design Progress**

Design is 100% complete.

### **Construction Progress**

The IT Hardware and Software procurement contract was awarded by the BOAC on April 5, 2010.

Construction bids were received on March 30, 2010. The construction contract was awarded to Technion Contractor, Inc. on May 17, 2010 at the BOAC meeting.

### **Budget Status**

This project is tracking to the budget.

### **Schedule Status**

This project is anticipated to complete on schedule.

### **Issues**

None at this time.

## UTILITIES & INFRASTRUCTURE ELEMENT - Wired & Wireless\* (U004A)

### **Project Description**

This project consists of a number of sub-projects which makes the data network at LAWA more secured as well as provides more bandwidth & capacity for data, voice, video, and security applications. The Wired & Wireless Networks Project consists of the following:

- 1) Upgrading the data network from the ATM backbone to the Gigabit Ethernet backbone.
- 2) Implementation of a wireless network throughout the campus, including the central terminal area.
- 3) Extending the wired Gigabit Ethernet network into the central terminal area.

### **Planning and Programming Status**

Project Definition is complete.

### **Design Progress**

Design is 100% complete.

### **Construction Progress**

The Gigabit Ethernet network implementation is complete.

The four new radio frequencies and interim equipment were obtained & installed.

The wireless network implementation is in progress.

The wired network expansion into the central terminal area will begin soon.

Overall, the implementation/construction is about 76% completed.

LAWA staff is doing most of the implementation. Project management and subject-matter-expert services are obtained through the PMO services contracts (DA-4362 and DA-4363). Equipment are obtained through the AT&T Equipment Contract (DA-4341).

### **Budget Status**

This project is tracking to the budget.

### **Schedule Status**

This project is progressing on schedule.

### **Issues**

---

## **UTILITIES & INFRASTRUCTURE ELEMENT - Voice Over Internet Protocol\* (U006A)**

### **Project Description**

This project upgrades the phone system and phone sets throughout LAWA to the voice over IP (VOIP) model that features better feature sets and cost savings by leveraging the data network and the use of trunk lines at lower per unit costs. The VOIP phone system migration at LAWA is consistent with the trend in industry.

### **Planning and Programming Status**

Project Definition is complete.

### **Design Progress**

Design is 100% complete.

### **Construction Progress**

LAWA staff is doing the majority of implementation/construction. The equipment are purchased from the AT&T equipment contract (DA-4341). Project management services and subject-matter-expert services are obtained through the PMO services contracts (DA-4362 and DA-4363). Another contract is being obtained for telephone site infrastructure improvements.

The implementation/construction is about 85% complete.

### **Budget Status**

This project is tracking to the budget.

### **Schedule Status**

This project is anticipated to complete on schedule.

### **Issues**

---

## UTILITIES & INFRASTRUCTURE ELEMENT - Enhanced Access Control Monitoring System (ACAMS)\* (U007A)

### **Project Description**

The Enhanced Access Control Alarm Monitoring System (ACAMS) Project will replace the existing 16-years-old ACAMS System with the new state-of-the-art technologies & enhanced security features to provide better security measures in and around the Airports. The badge reader system will be replaced. The new badge reader system will integrate with the CCTV system. Network equipment will be added to support the new system. The enhanced security features include Identity Management (IDM) and Public Key Infrastructure (PKI).

### **Planning and Programming Status**

Project Definition is complete.

### **Design Progress**

Design Notice-to-Proceed was issued on February 8, 2010.  
Design is 70% complete.

### **Construction Progress**

No construction contract awarded.

### **Budget Status**

This project is tracking to the budget.

### **Schedule Status**

This project is progressing on schedule.

### **Issues**

---

## UTILITIES & INFRASTRUCTURE ELEMENT - CCTV System Enhancement and Expansion\* (U013A)

### **Project Description**

The CCTV project will upgrade the existing CCTV system with a digital Centralized Video Management System, Video Storage, and Video Analytics. Digital Video Encoders will be specified to enable LAWA to use the existing cameras to end-of-life. Some new digital cameras will be added to improve the camera coverage based on the business rules established by the Stake Holders and approval from Executive Management.

### **Planning and Programming Status**

Project Definition is completed.

### **Design Progress**

Design Notice-to-Proceed was issued on February 8, 2010.  
The design is 70% complete.

### **Construction Progress**

No construction contracts awarded.

### **Budget Status**

This project is tracking to the budget.

### **Schedule Status**

This project is progressing on schedule.

### **Issues**

---

## LANDSIDE ELEMENT - Demolition of Facility SW Corner of Arbor Vitae and La Cienega (L001A)

### **Project Description**

This project includes abatement and demolition of a one-story commercial building, two metal storage sheds, asphalt and concrete pavement, masonry wall and other miscellaneous items at a one-acre site at specific parcels on West Arbor Vitae Street. After demolition, activities include placement of compacted fill, geo-fabric, and a layer of crushed rock/gravel.

### **Planning and Programming Status**

Project Definition is complete.

### **Design Progress**

Design is 100% complete.

### **Construction Progress**

Construction contract awarded to Pena Grading & Demolition on September 21, 2009.

Notice to proceed issued October 26, 2009.

Construction is complete and project is in close-out.

### **Budget Status**

This project was completed under budget.

### **Schedule Status**

This project was completed on schedule.

### **Issues**

---

## LANDSIDE ELEMENT - Air Freight 1 - Roof Renovation (L002A)

### **Project Description**

This project will provide for the renovation of roof and roof top parking of Air Freight No.1 at LAX and provide a long term solution to the drainage problem on the roof of the building.

### **Planning and Programming Status**

Project Definition is complete.

### **Design Progress**

Design is 100% complete.

### **Construction Progress**

Construction is complete and project is in close-out.

### **Budget Status**

This project was completed within budget.

### **Schedule Status**

This project was completed on schedule.

### **Issues**



---

## **LANDSIDE ELEMENT - AOA Perimeter Fence (World Way West) Phase 3 (L003A)**

### **Project Description**

This project will enhance approximately 2.2 miles of fence from Taxiway AA to Coast Guard Road of LAX and will be constructed in the same manner as Phases 1 and 2. This project also provides security lighting and electrical duct banks along portions of World Way West from Taxiway AA to Coast Guard Road.

### **Planning and Programming Status**

Project Definition is complete.

### **Design Progress**

Design is 100% complete.

### **Construction Progress**

Construction contract awarded to Griffith Company December 8, 2008.

Notice to Proceed issued January 22, 2009.

Construction is 75% complete.

### **Budget Status**

This project is anticipated to complete on or under budget.

### **Schedule Status**

Installation of security fencing, electrical duct bank and lighting were substantially completed within schedule. Procurement and installation of security gates is currently behind schedule; however, should be completed at the end of August.

### **Issues**

Liquidated damages have been assessed due to security gates not being installed prior to contract completion date.

---

## LANDSIDE ELEMENT - I-105 Ramp Improvements (Caltrans) (L010A)

### **Project Description**

This project releases funds not to exceed \$2M to the State of California Department of Transportation (Caltrans) for the widening from two lanes to three lanes the westbound I-105 (Glenn Anderson) Freeway off-ramps to northbound Sepulveda Boulevard leading to LAX.

### **Planning and Programming Status**

Project Definition is complete.

### **Design Progress**

Design is 100% complete.

### **Construction Progress**

Construction is complete and project is in close-out.

### **Budget Status**

This project was completed under budget. LAWA has not yet made any payment to Caltrans.

### **Schedule Status**

This project was completed as scheduled in January 2010.

### **Issues**

LAWA continues to experience significant drainage problems associated with the I-105 freeway. We are withholding transfer of payment, pending resolution of these drainage problems.

## LANDSIDE ELEMENT - Theme Building Restoration (L005A)

### **Project Description**

This project provides for the reconstruction of the upper and lower arches to restore the appearance and provide weather protection. The entire structure will be seismically retrofitted using FEMA 356/ASCE 41 as the design guideline to a Collapse Prevention level. This will be accomplished using a Tuned Mass Damper on top of the elevator core and conventional shotcrete at various locations in the basement and first floor.

### **Planning and Programming Status**

Project Definition is complete.

### **Design Progress**

Design is 100% complete.

### **Construction Progress**

Construction contract awarded to Tower General Construction Group on July 7, 2008.

Notice to Proceed issued August 18, 2008.

Project is in closeout.

### **Budget Status**

The Upper Arch Repair completed within budget.

The Theme Building Restoration is tracking to the budget.

### **Schedule Status**

The project has a 365 calendar day construction contract. Adding approved weather delays, the project was to have been completed on September 15, 2009. The project is behind schedule. It is anticipated that construction will be substantially completed by mid June.

### **Issues**

Contract documents allow for the assessment of liquidated damages (LDs) for delays in overall project completion and for certain milestones (e.g. the cladding of arches). At this time, Tower is subject to potential LDs for delays to completion of the project. However, the value will be determined upon the evaluation of Time Impact Analyses. Weather or concurrent delays occurring after the September 15, 2009 contract completion date are still being negotiated. On April 1, 2010, Tower submitted a Change Order Request totaling approximately \$500,000, claiming potential delays and their submittal is currently under review by LAWA.

---

## **RESIDENTIAL/SOUNDPROOFING ELEMENT - Aircraft & Noise Monitoring & Management System (ANMMS)-LAX (S004A)**

### **Project Description**

LAWA installed a state of the art Aircraft and Noise Monitoring and Management System (ANMMS) in 1990. The monitors measure noise 24 hours a day, 365 days a year. ANMMS measures airport generated noise in the community, tracks and identifies aircraft within a certain radius of the airport, and is used to help LAWA produce maps showing the noise impact area, as required by the State of California. LAWA continually monitors its ANMMS to ensure the accuracy of noise data and related operations information, and to improve the access to and utilization of the various types of available data.

### **Planning and Programming Status**

Project Definition is complete.

### **Design Progress**

Design is 100% complete.

### **Construction Progress**

Construction contract awarded to Lochard Corporation on October 4, 2004.

### **Budget Status**

This project is anticipated to complete on budget.

### **Schedule Status**

The system is in final acceptance. Anticipate meeting a June completion.

### **Issues**

---

## **RESIDENTIAL/SOUNDPROOFING ELEMENT - Noise Mitigation/Soundproofing (City of LA) (S002A)**

### **Project Description**

This project will provide soundproofing of approximately 9,400 eligible dwelling units making them land use compatible.

### **Planning and Programming Status**

Not applicable.

### **Design Progress**

Acoustic Design in progress by Corlett, Skaer & Devoto Architects at LAX.

Acoustic Design in progress by Wyle Labs at Van Nuys.

### **Construction Progress**

Various Construction Contracts ongoing.

This component of the Noise Mitigation / Soundproofing Program is 86% complete.

### **Budget Status**

This project is trending to complete on budget.

### **Schedule Status**

This project is on track to be completed in 2012.

### **Issues**

The City Attorney is handling a claim.

## TERMINAL ELEMENT - Elevators and Escalators Replacement (T001A)

### **Project Description**

This project will upgrade / replace all aging elevators, escalators and moving walkways at LAX, which have exceeded their useful life expectancy. These units will be upgraded/replaced in staggered Priority Groups.

### **Planning and Programming Status**

Project Definition is complete.

### **Design Progress**

Priority I Procurement - Design is 100% complete.  
Priority I Site Mods - Design is 100% complete.  
Priority II-IV Procurement - Design is 100% complete.  
Priority II-IV Site Mods - Design is 55% complete.  
Priority II-IV GC MRLE Elevators - Design is 28% complete.

### **Construction Progress**

Priority I Procurement - Contract awarded to Kone, Inc. on May 18, 2009 - Procurement is 39% complete.  
Priority I Site Mods - Construction contract awarded to W.E. O'Neil Construction Company on August 17, 2009 - Construction is 28% complete.  
Priority II - Procurement - NTP issued to Schindler Elevator Corporation on April 19, 2010.  
Priority II-IV Site Mods - No construction contracts awarded.  
Priority III-IV GC MRLE Elevators - No construction contracts awarded.

### **Budget Status**

Each active project is on track to finish within the respective project budget.

### **Schedule Status**

For each active project one unit in T3 and one in T5 are behind the original schedule; however, the project is still on track to complete by the milestone date.

### **Issues**

---

## **TBIT RENOVATION ELEMENT - TBIT Interior Improvements and Baggage Screening Facilities (B001A)**

### **Project Description**

This project will renovate the interior public spaces (including the departure lobby; departure concourses; arrival concourses; bus hold room; meeter-greeter area; in-transit lounge; in-bound and outbound baggage system; upgrade the building's paging system, all IT Systems and upgrade the existing elevators, escalators, and moving walks) and construct the North New Large Aircraft Gates. The outbound baggage system will be pursuant to the requirements of the TSA and will include new "matrix" buildings to house the security screening equipment and TSA personnel.

### **Planning and Programming Status**

Project Definition is complete.

### **Design Progress**

Design is 100% complete.

### **Construction Progress**

Construction contract awarded to Clark/McCarthy Joint Venture September 8, 2006.  
Construction was substantially complete on February 7, 2010.  
The contract is in close-out phase.

### **Budget Status**

This project is anticipated to complete under budget.

### **Schedule Status**

The closeout phase is forecast to complete by June 2010.

### **Issues**

---

## **TBIT RENOVATION ELEMENT - Passenger Boarding Bridges (PBB) Replacements & Extensions (B002A)**

### **Project Description**

This project will deliver and install 26 new passenger boarding bridges (PBBs) at LAX, 19 at Tom Bradley International Terminal, 4 at West Remote Boarding Facilities and 3 at Terminal 3. This project also constructs 6 extension PBBs at Ontario Terminals 2 and 4.

### **Planning and Programming Status**

Project Definition is complete.

### **Design Progress**

Design is 100% complete.

### **Construction Progress**

This project is complete.

### **Budget Status**

This project was completed under budget.

### **Schedule Status**

This project is completed.

### **Issues**



---

## PROJECTS IN DEFINITION OVERVIEW

### User's Guide - Projects in Definition

This section lists the projects that are in various stages of initiation and definition and are being further developed to ensure a shared understanding of purpose, objective, scope, funding and mandate. Projects in Definition are by their very nature subject to change in scope, schedule and cost as the purpose and objectives are agreed upon and business analyses are conducted.

**Estimated Cost** - Provides a rough order of magnitude (ROM) estimate of the total project cost. It is anticipated this cost will vary as the project proceeds through the definition phase and the scope is defined and agreed upon.

**Estimated Decision Date** - Is a forecast date by which the Planning Group and Project Sponsor are ready to present the Project Definition Document to LAWA Executive Management for review and approval.

---

## PROJECTS IN DEFINITION - Interim Taxiway Safety Improvement Project (ITSIP) (A006B)

### **Project Description**

The Interim Taxiway Safety Improvement Project (ITSIP) relocates three high-speed exit taxiways between the North Airfield Runways. The relocated taxiways reduce the likelihood and severity of potential runway incursions without significant impacts to runway occupancy and operational efficiency.

### **Planning and Programming Status**

An on-call Aviation Services contract was awarded to URS Corporation on December 7, 2009.

Task No. 1 authorizing project definition, 30% preliminary design and an initial environmental assessment was issued on December 22, 2009.

### **Estimated Cost**

\$70.00 M

### **Estimated Decision Date**

July 2010

### **Issues**

An EIR is required.

---

## PROJECTS IN DEFINITION - CTA Security Barriers - Phase 2 (L009A)

### **Project Description**

This project consists of installing permanent bollards at critical locations in the Central Terminal Area (CTA) to mitigate potential vehicular threats.

### **Planning and Programming Status**

Currently in Project Definition.

### **Estimated Cost**

\$2.00 M

### **Estimated Decision Date**

September 2010

### **Issues**

---

## PROJECTS IN DEFINITION - Coastal Dunes Improvement Project (L012A)

### **Project Description**

The scope of this project includes the removal of existing pavement from abandoned streets and sidewalks in the coastal dunes areas north of Sandpiper Street and the subsequent planting of appropriate native vegetation. This project is in accordance with Exhibit A, Item G of the Stipulated Settlement Agreement, dated February 17, 2006.

### **Planning and Programming Status**

Currently in Project Definition.

Currently, a survey crew is working inside the Dunes area gathering the required data for the civil drawings which will be used to obtain a B-Permit from the City of LA for curb and gutter work. Design consultant is working on several documents that will be presented to the Westchester residents at a meeting next month.

### **Estimated Cost**

\$3.00 M

### **Estimated Decision Date**

August 2010

### **Issues**

Westchester residents would like LAWA to "weed" the walk path on Waterview St. of "non-native" plants. A work request may be issued to Construction & Maintenance Service for this work. Airport Police dispatch required notification every time the Dunes area is being visited. We will continue to give updates to Westchester residents and Coastal Commission members.

---

## PROJECTS IN DEFINITION - Passenger Boarding Bridges Replacement (T1, T3, T6, Remotes) (T004A)

### **Project Description**

This project will determine the replacement options of Passenger Boarding Bridges (PBBs) as well as the provision for either new, replacement or upgraded bridge mounted preconditioned air (PCA), aircraft power units (APU), and potable water at various gates in Terminals 1, 3, 6 and the Remotes. Up to 10 PBBs may require complete replacement. The project estimate includes an allowance for civil work required to accommodate a new PBB, such as minor electrical power reconfiguration, footings or foundation modifications, and / or terminal modifications.

### **Planning and Programming Status**

Currently in Project Definition.

### **Estimated Cost**

\$22.37 M

### **Estimated Decision Date**

July 2011

### **Issues**

---

## PROJECTS IN DEFINITION - Fire Life Safety System Replacement (T1) (T006A)

### **Project Description**

This project will enhance the fire life safety system by installing audio annunciation devices, smoke detectors in electrical closets and electrical rooms, smoke detectors in mechanical rooms, strobes in tenant spaces and in the corridors and in the areas with limited visibility, smoke detectors for elevator recall, pull stations in elevator lobbies, and strobes on arrival level. This project will also include relocation of pull stations in compliance with ADA, synchronization of strobes and integration of conveyors into Fire Life Safety System.

### **Planning and Programming Status**

Currently in Project Definition.

### **Estimated Cost**

\$2.25 M

### **Estimated Decision Date**

August 2010

### **Issues**

---

## PROJECTS IN DEFINITION - Fire Life Safety System Replacement (T2) (T007A)

### **Project Description**

This project will enhance the fire life safety system by installing audio annunciation devices, smoke detectors in electrical closets and electrical rooms, smoke detectors in mechanical rooms, strobes in tenant spaces and in the corridors and in the areas with limited visibility, smoke detectors for elevator recall, pull stations in elevator lobbies, and strobes on arrival level. This project will also include relocation of pull stations in compliance with ADA, synchronization of strobes and integration of conveyors into Fire Life Safety System.

### **Planning and Programming Status**

Currently in Project Definition

### **Estimated Cost**

\$2.25 M

### **Estimated Decision Date**

August 2010

### **Issues**

## PROJECTS IN DEFINITION - IT Infrastructure Construction (U003A)

### Project Description

The IT Infrastructure Construction Project consists of a number of sub-projects which impact the underlying LAWA IT passive infrastructure including: telecom rooms, duct banks, conduits, and cable and fiber. The IT Infrastructure Construction Project consists of the following:

Phase I: Using the authority from the pending contract awards to En Pointe Technologies, Inc. and General Dynamics Information Technology to provide upgrade services, IMTG will upgrade and expand the existing IT infrastructure at LAX.

Below are some of the proposed IT infrastructure improvements under this phase:

1. Upgrade telephone site infrastructure for the Voice-Over-IP System;
2. Extend existing south-side fiber backbone for voice and data redundancy;
3. Repair damaged underground vaults and pull-boxes;
4. Upgrade existing IT equipment rooms at Telecommunications and Airport Police Building;
5. Build-out additional IT rooms in Terminals 1, 2, 3, 5 and 6; and
6. Provide interim infrastructure upgrades to the existing Administration East/West data centers and install infrastructure for a temporary Performance-Optimized Datacenter (POD).

At the same time, IMTG will seek to award contract to develop a Multi-year/Multi-phase Plan for IT Infrastructure.

Phase II: Using the ITSSS RFP, IMTG will request contract awards to implement a Cable Management System and to provide LAX Underground Duct-bank Survey. Additionally, IMTG will need to develop another RFB/RFP to acquire additional contract authorities for the installation of standard-based structured cabling for Terminals 1, 2, 3, 5 and 6.

Phases III and IV: Future contract authorities and funding will need to be obtained for the installation of a new duct bank to the northern and southern perimeters of LAX, including outdoor distribution enclosures and underground maintenance vaults; and to continue the IT room expansions and the installation of a standard-based structured cabling in Terminals 4, 7 and 8.

### Planning and Programming Status

Currently in Project Definition.

### Estimated Cost

\$66.30 M

### Estimated Decision Date

June 2010

### Issues



---

## PROJECTS IN DEFINITION - Electrical Switchboard & Panelboard Replacements (T2, 3, 5, 6, 7,8) (U011A)

### **Project Description**

This project consists of replacing old and outdated equipment and switchgear in the terminals to comply with the Department of Building and Safety directive. Specifically, this project replaces existing 1960's switchgear, replaces panel boards and distribution boards to code compliance, replaces cloth-type cabling, and upgrades the 1960's Emergency Generator System, where applicable. This project will not increase the electrical capacity within the terminals; but will comply with the Department of Building and Safety directive.

### **Planning and Programming Status**

Currently in Project Definition.

### **Estimated Cost**

\$54.10 M

### **Estimated Decision Date**

July 2011

### **Issues**

---

## PROJECTS IN DEFINITION - Parking Revenue Control System (VNY) (U015A)

### **Project Description**

This project will replace the existing Parking Control System at the Van Nuys Airport Flyaway Terminal with a state-of-the-art web-based system. The new system includes automated entry and exit lanes that track and accept payment for parking at the facility. This system will be cash-less, meaning that all payments are to be made by either credit or debit cards. Attendant booths will not be required (staff-less) and, as a result, will be removed. This new parking control system will automatically control and monitor vehicle inventory and parking space availability. During emergencies and for exceptional transactions, with the use of remote access, the system has the ability to communicate and view the driver and release the gates.

The current Parking System equipment is 20+ years old and is now obsolete and it is very difficult to find the spare parts and the people with the knowledge and skill-set to repair the equipment and recover the system from failure in a timely manner.

### **Planning and Programming Status**

Project Definition is complete.

### **Estimated Cost**

\$0.64 M

### **Estimated Decision Date**

June 2010

### **Issues**

---

## PROGRAM MASTER SCHEDULE OVERVIEW

### User's Guide - Schedule

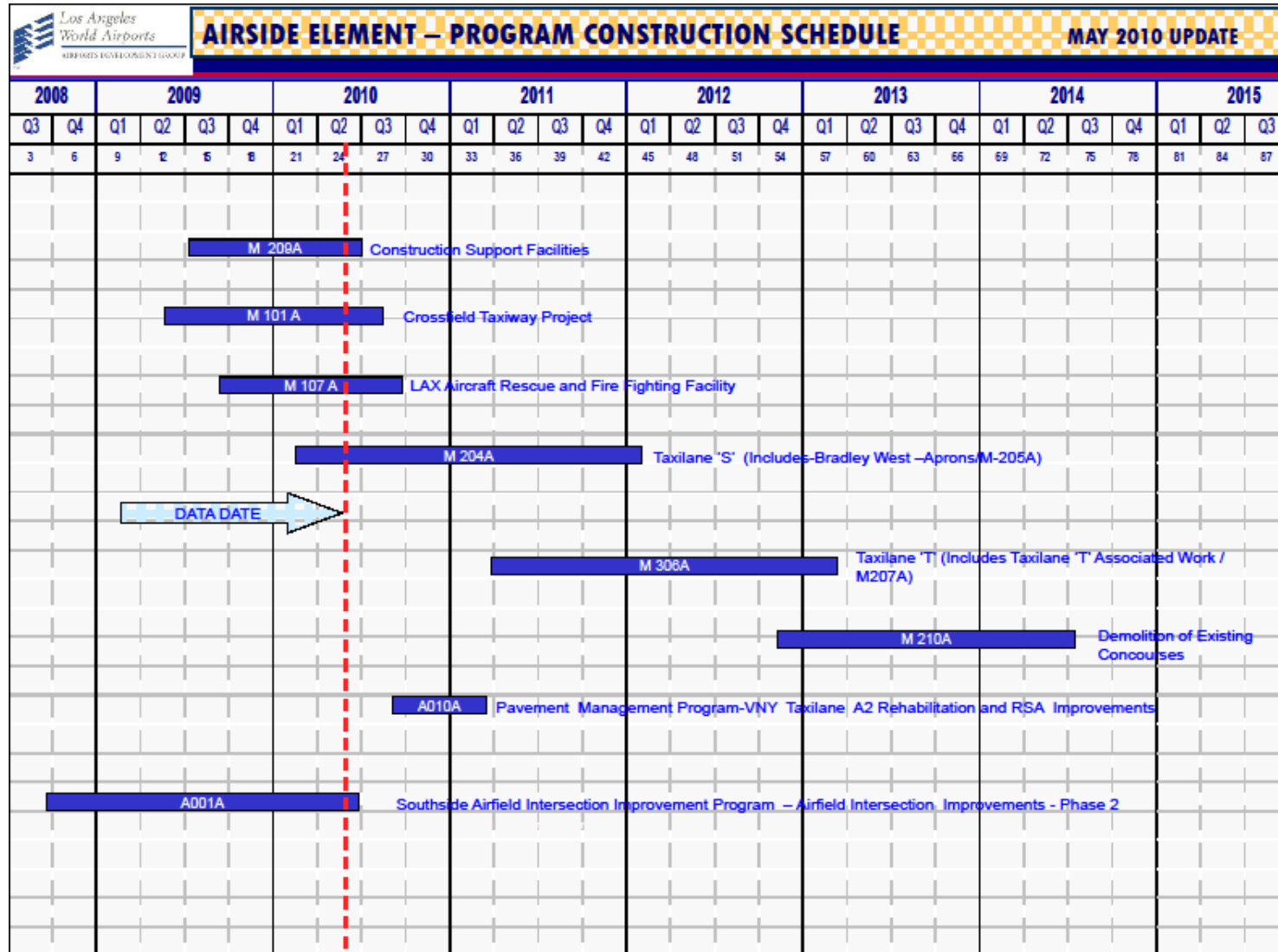
The information provided herein is designed to furnish users of the Airport Development Group (ADG) Program Construction Schedule Report with greater knowledge and a better understanding of the composition of the various components of the schedule report.

**Data Date** - Is a vertical line showing the current date of the report. Dates to the left side of the data date are known. Dates to the right side of the data date are projected.

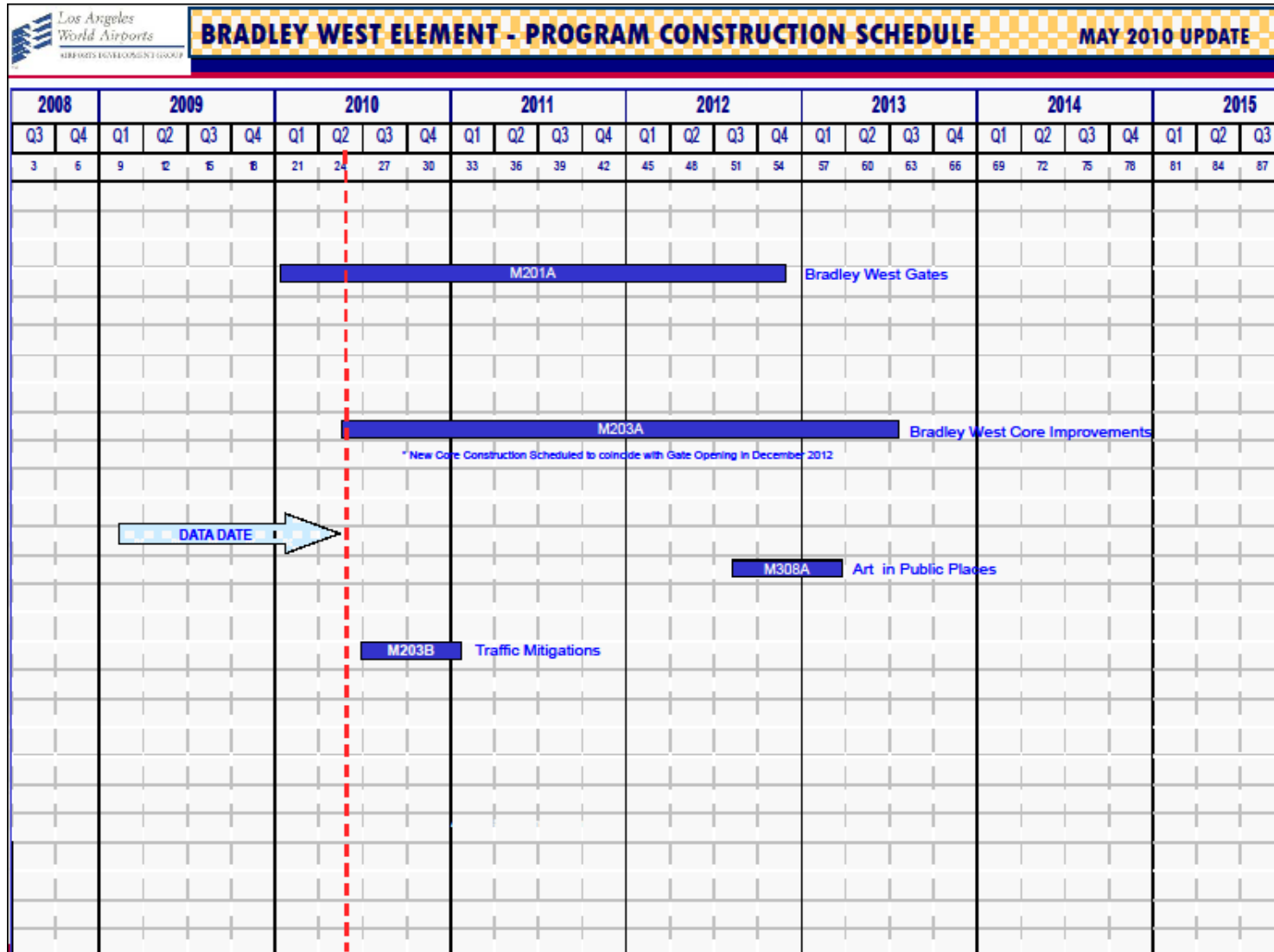
**Project Schedule Bar** - Is the blue bar which represents the construction phase for each project; with the exception of the Residential / Soundproofing projects which contains planning, design and construction phases.

**Project Number** - Is a unique identifier for each project that enables the reader to easily correlate scope, schedule and budget.

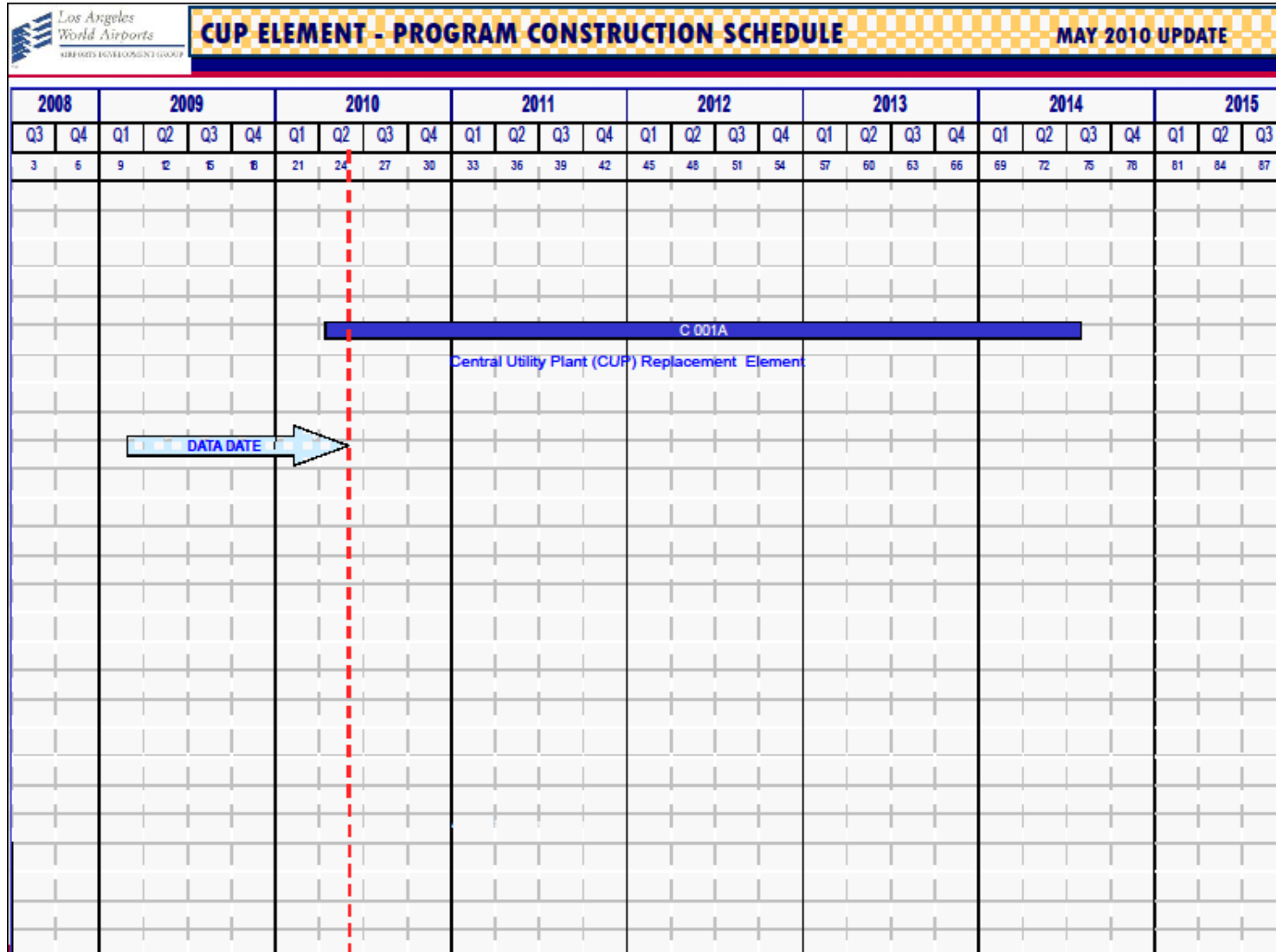
## PROGRAM MASTER SCHEDULE - Continued



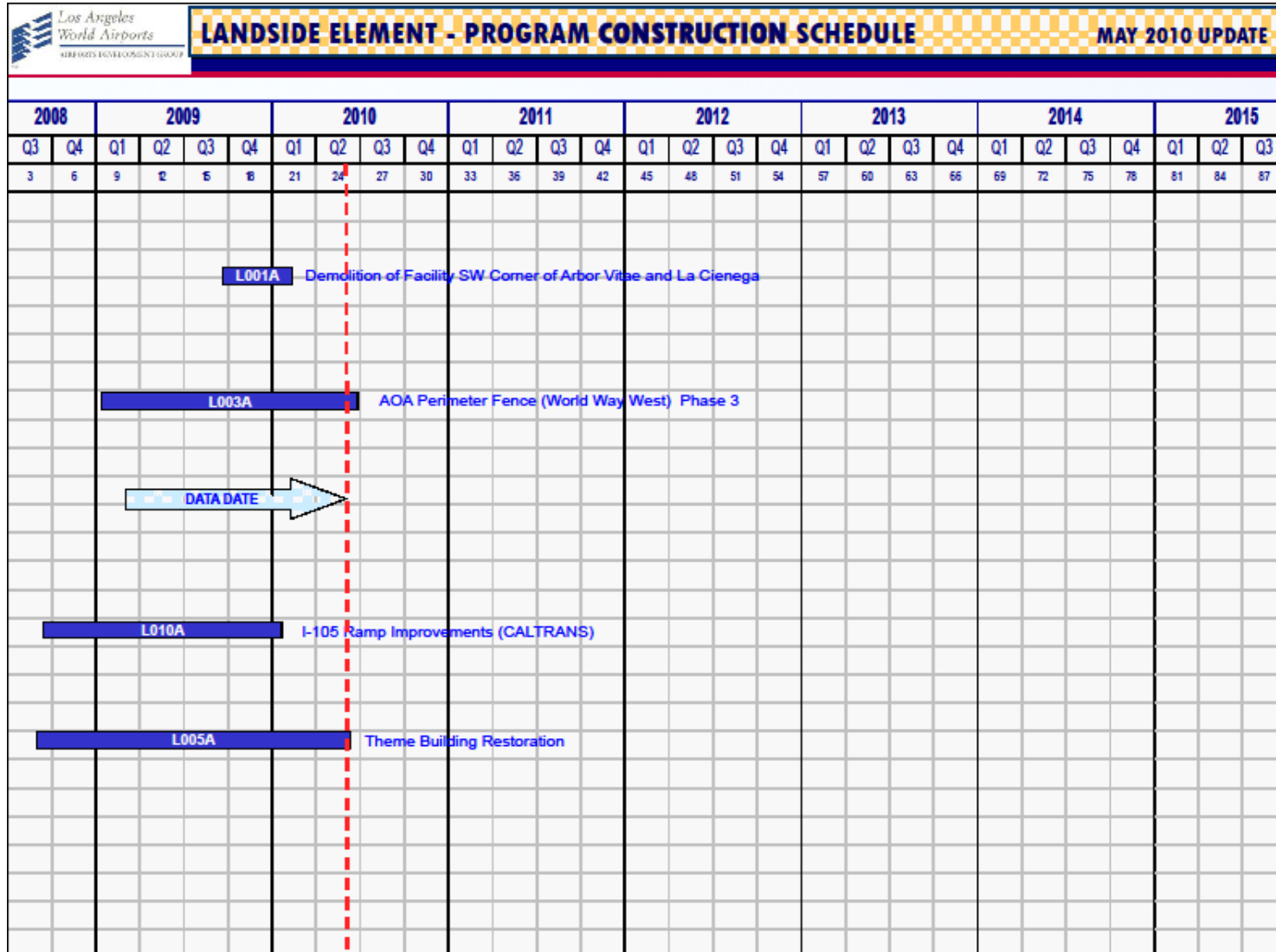
# PROGRAM MASTER SCHEDULE - Continued



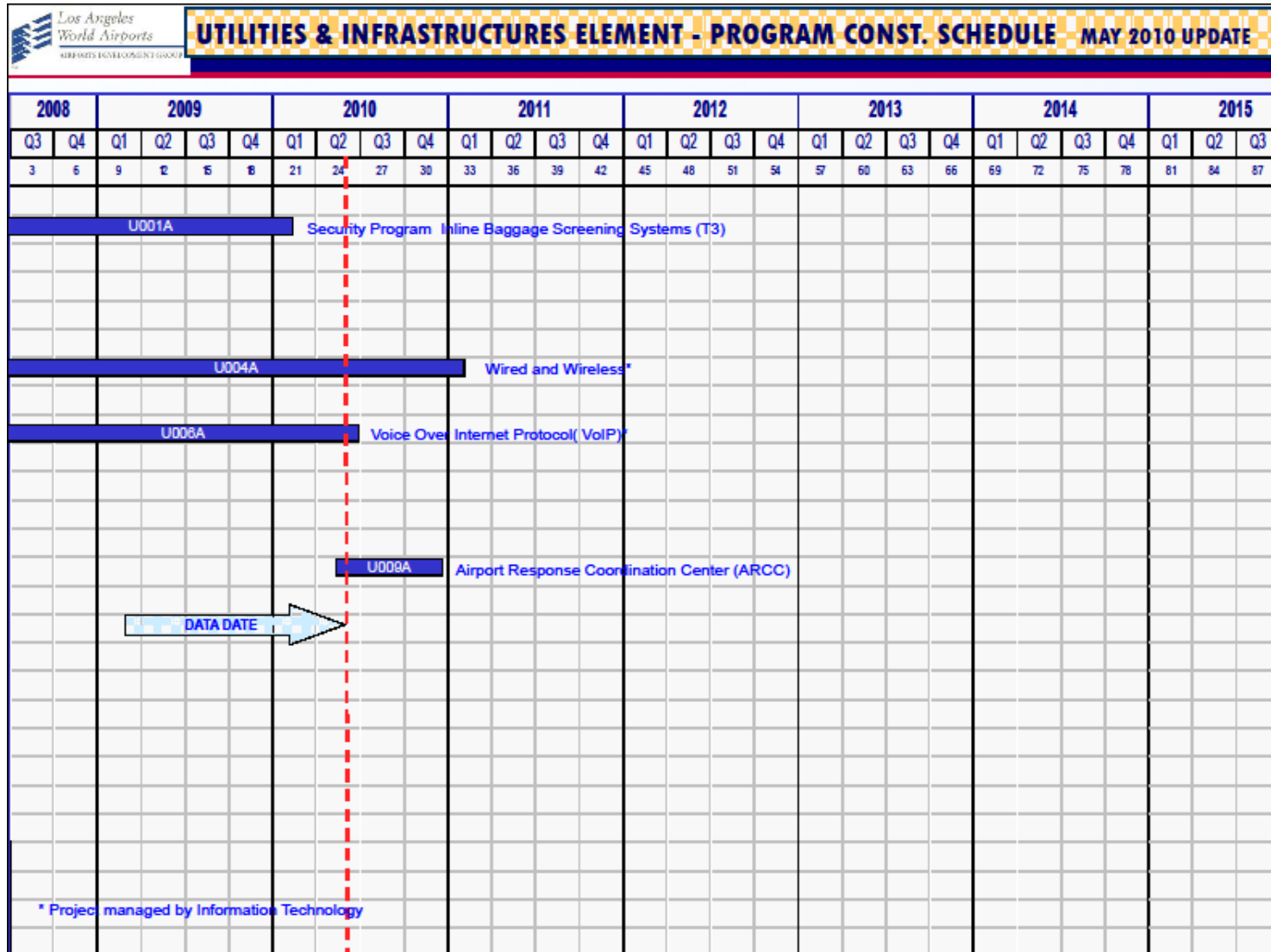
# PROGRAM MASTER SCHEDULE - Continued

2008		2009				2010				2011				2012				2013				2014				2015		
						Q1	Q2	Q3	Q4	Q1	Q2	Q3	Q4	Q1	Q2	Q3	Q4	Q1	Q2	Q3	Q4	Q1	Q2	Q3	Q4	Q1	Q2	Q3
3	6	9	12	15	18	21	24	27	30	33	36	39	42	45	48	51	54	57	60	63	66	69	72	75	78	81	84	87
 <p style="text-align: center;">C 001A Central Utility Plant (CUP) Replacement Element</p>																												

## PROGRAM MASTER SCHEDULE - Continued

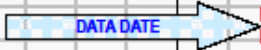


## PROGRAM MASTER SCHEDULE - Continued

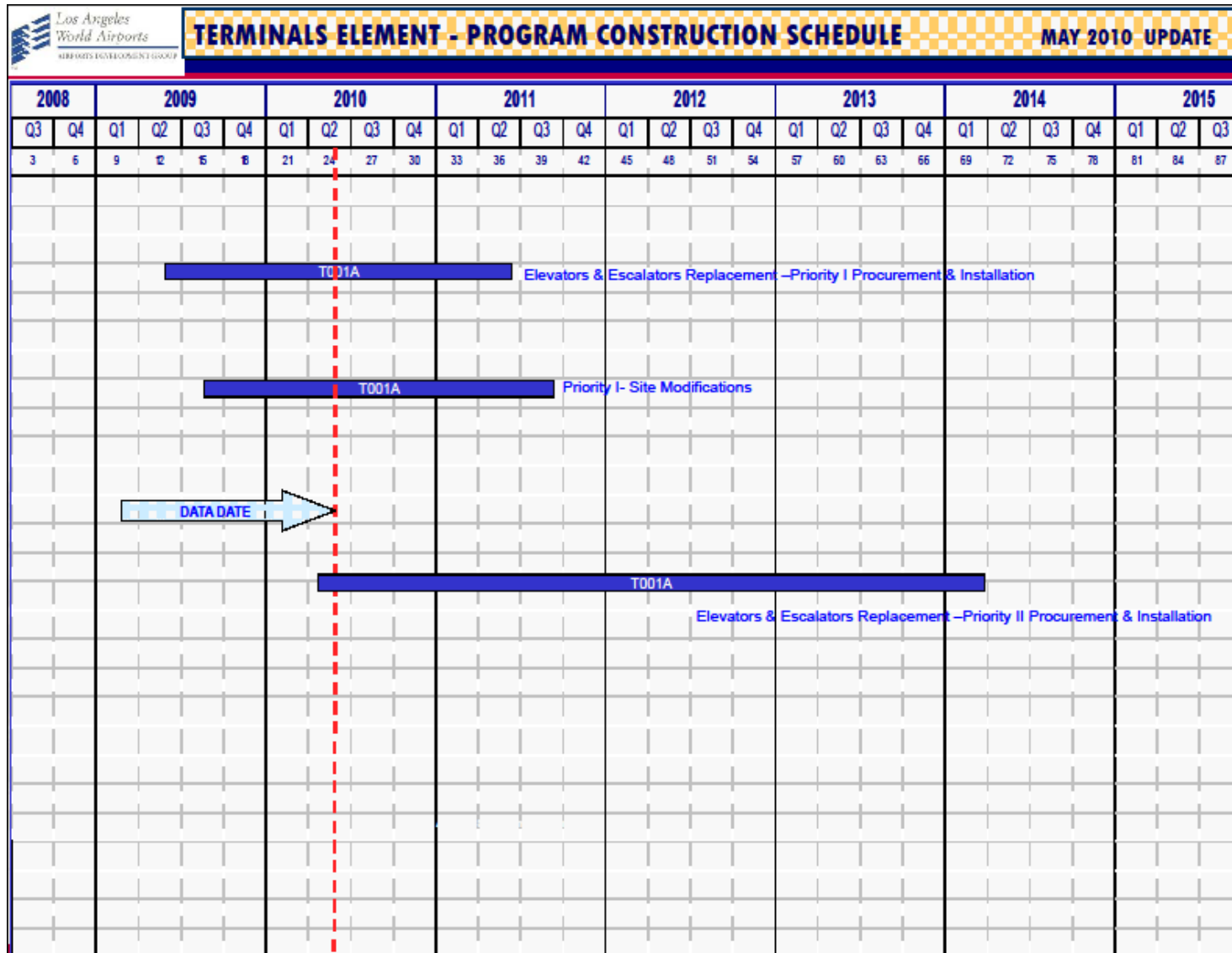





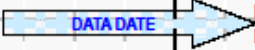

## PROGRAM MASTER SCHEDULE - Continued

Los Angeles World Airports AIRPORTS DEVELOPMENT GROUP		<b>RESIDENTIAL/ SOUNDPROOFING ELEMENT- PROGRAM SCHEDULE</b>																								MAY 2010 UPDATE		
2008		2009				2010				2011				2012				2013				2014				2015		
Q3	Q4	Q1	Q2	Q3	Q4	Q1	Q2	Q3	Q4	Q1	Q2	Q3	Q4	Q1	Q2	Q3	Q4	Q1	Q2	Q3	Q4	Q1	Q2	Q3	Q4	Q1	Q2	Q3
3	6	9	12	15	18	21	24	27	30	33	36	39	42	45	48	51	54	57	60	63	66	69	72	75	78	81	84	87
S002A																								Noise Mitigation / Soundproofing ( City of LA )				
S004A																								Aircraft & Noise Monitoring Management System (ANMMS) - LAX				
																												

## PROGRAM MASTER SCHEDULE - Continued



## PROGRAM MASTER SCHEDULE - Continued

 <b>TBIT RENOVATION ELEMENT - PROGRAM CONSTRUCTION SCHEDULE</b> <span style="float: right;">MAY 2010 UPDATE</span>																												
2008		2009				2010				2011				2012				2013				2014				2015		
Q3	Q4	Q1	Q2	Q3	Q4	Q1	Q2	Q3	Q4	Q1	Q2	Q3	Q4	Q1	Q2	Q3	Q4	Q1	Q2	Q3	Q4	Q1	Q2	Q3	Q4	Q1	Q2	Q3
3	6	9	12	15	18	21	24	27	30	33	36	39	42	45	48	51	54	57	60	63	66	69	72	75	78	81	84	87
<div style="display: flex; justify-content: space-between; align-items: center; margin-bottom: 10px;"> <div style="width: 20%; border: 1px solid black; background-color: #4a7ebb; color: white; padding: 2px;">B001A</div> <div style="width: 80%; border-bottom: 1px solid black; padding: 2px;">TBIT Interior Improvements and Baggage Screening Facilities</div> </div> <div style="margin-left: 20px; margin-top: 100px;">  </div> <div style="margin-left: 20px; margin-top: 100px;">  </div>																												

### **User's Guide - Budget Reports**

The information provided herein is designed to furnish users of the Airport Development Group (ADG) Budget Reports with greater knowledge and a better understanding of the composition of the various components of the budget report.

**Current Budget** - Is the estimated cost of the project as it was planned plus or minus any processed revisions.

**Committed to Date** - Is the total contractual obligation to date for the project, e.g. awarded design contracts, awarded construction contracts, authorized task orders, etc.

**Incurred to Date** - Is the total of invoices received to date for the project.

**Estimate at Completion (EAC)** - Is the latest estimate of the total cost of the project.

**Variance** - Is the difference between Budget minus Estimate at Completion (EAC).

**Percent (%) Incurred** - Calculated as Incurred to Date divided by Estimate at Completion, this column provides a financial-oriented progress indicator.

**Percent (%) Contingency Used**: Calculated as the change in Contingency divided by Original Contingency, this column provides an indicator for project contingency-usage.

## PROGRAM COST SUMMARY REPORT

as of 4/30/2010

(dollars in thousands)							
Description	Current Budget	Committed to Date	Incurred to Date	Estimate at Completion	Variance (Budget-EAC)	% Incurred	% Cont Used
Airside Element	649,544	373,069	207,591	616,919	32,624	34%	23%
Bradley West Element	1,545,020	743,709	150,442	1,373,146	171,874	11%	0%
CUP Replacement Element	438,085	48,265	25,706	405,169	32,915	6%	12%
Utilities & Infrastructure Element	226,420	182,021	160,916	218,504	7,917	74%	0%
Landside Element	33,435	32,001	21,876	32,106	1,329	68%	19%
Residential/Soundproofing Element	163,233	144,483	140,010	163,233	0	86%	0%
Terminal Element	270,000	95,171	22,248	205,170	64,830	11%	0%
TBIT Renovation Element	755,343	737,386	722,632	736,973	18,369	98%	89%
<b>Subtotal</b>	<b>4,081,080</b>	<b>2,356,105</b>	<b>1,451,421</b>	<b>3,751,220</b>	<b>329,858</b>	<b>39%</b>	<b>23%</b>
Unallocated Contingency	317,558	0	0	N/A	N/A	N/A	N/A
<b>Subtotal</b>	<b>4,398,638</b>	<b>2,356,105</b>	<b>1,451,421</b>	<b>N/A</b>	<b>N/A</b>	<b>N/A</b>	<b>N/A</b>
Projects in Definition	222,903	8,576	5,766	N/A	N/A	N/A	N/A
<b>Program Total</b>	<b>4,621,541</b>	<b>2,364,681</b>	<b>1,457,187</b>	<b>N/A</b>	<b>N/A</b>	<b>N/A</b>	<b>N/A</b>

Notes:

1. The current budget and estimate at completion excludes escalation

## AIRSIDE ELEMENT BUDGET REPORT as of 4/30/2010

(dollars in thousands)								
Project #	Description	Current Budget	Committed to Date	Incurred to Date	Estimate at Completion	Variance (Budget-EAC)	% Incurred	% Cont Used
M209A	Construction Support Facilities	8,425	6,937	4,722	7,390	1,035	64%	51%
M101A	Crossfield Taxiway Project	138,772	129,938	105,133	140,154	(1,382)	75%	85%
M107A	LAX Aircraft Rescue and Fire Fighting Facility	14,190	11,728	5,022	12,851	1,339	39%	12%
M205A	Bradley West - Aprons	111,870	25,814	10,876	103,387	8,483	11%	0%
M204A	Taxilane 'S'	150,918	128,254	20,245	142,324	8,593	14%	1%
M306A	Taxilane 'T'	96,500	6,218	3,572	89,335	7,165	4%	0%
M210A	Demolition of Existing Concourses	52,600	1,739	851	47,924	4,676	2%	0%
M309A	American Airlines Settlement	27,250	22,063	21,980	25,753	1,497	85%	39%
A001A	Southside Airfield Improvement Program - Airfield Intersection Improvements - Phase 2	41,049	40,378	35,190	40,413	636	87%	68%
A010A	Pavement Management Program - VNY Taxilane A2 Rehabilitation and RSA Improvements	7,970	0	0	7,388	582	0%	0%
<b>Airside Element Total</b>		<b>649,544</b>	<b>373,069</b>	<b>207,591</b>	<b>616,919</b>	<b>32,624</b>	<b>34%</b>	<b>23%</b>

Notes:

1. The current budget and estimate at completion excludes escalation

## BRADLEY WEST ELEMENT BUDGET REPORT

as of 4/30/2010

(dollars in thousands)								
Project #	Description	Current Budget	Committed to Date	Incurred to Date	Estimate at Completion	Variance (Budget-EAC)	% Incurred	% Cont Used
M201A	Bradley West Gates	742,954	493,528	85,208	668,259	74,695	13%	0%
M203A	Bradley West Core Improvements	793,164	244,457	64,957	696,257	96,907	9%	0%
M203B	Construction Traffic Mitigations	3,542	364	277	3,270	272	8%	0%
M308A	Art In Public Places	5,360	5,360	0	5,360	0	0%	0%
<b>Bradley West Element Total</b>		<b>1,545,020</b>	<b>743,709</b>	<b>150,442</b>	<b>1,373,146</b>	<b>171,874</b>	<b>11%</b>	<b>0%</b>

Notes:

1. The current budget and estimate at completion excludes escalation

## CUP REPLACEMENT ELEMENT BUDGET REPORT

as of 4/30/2010

(dollars in thousands)								
Project #	Description	Current Budget	Committed to Date	Incurred to Date	Estimate at Completion	Variance (Budget-EAC)	% Incurred	% Cont Used
C001A	Central Utility Plant	438,085	48,265	25,706	405,169	32,915	6%	12%
<b>CUP Replacement Element Total</b>		<b>438,085</b>	<b>48,265</b>	<b>25,706</b>	<b>405,169</b>	<b>32,915</b>	<b>6%</b>	<b>12%</b>

Notes:

1. The current budget and estimate at completion excludes escalation



## UTILITIES & INFRASTRUCTURE ELEMENT BUDGET REPORT

as of 4/30/2010

(dollars in thousands)								
Project #	Description	Current Budget	Committed to Date	Incurred to Date	Estimate at Completion	Variance (Budget-EAC)	% Incurred	% Cont Used
U001A	Security Program In-Line Baggage Screening Systems (T3) North	160,100	152,697	146,610	152,690	7,411	96%	25%
U009A	Airport Response Coordination Center (ARCC)	13,914	9,509	614	13,408	506	5%	0%
U004A	Wired & Wireless*	15,808	12,482	8,833	15,808	0	56%	0%
U006A	Voice Over Internet Protocol*	3,521	2,913	1,817	3,521	0	52%	0%
U007A	Enhanced Access Control Monitoring System (ACAMS)*	14,519	2,212	1,558	14,519	0	11%	0%
U013A	CCTV System Enhancement and Expansion*	18,558	2,208	1,484	18,558	0	8%	0%
<b>Utilities &amp; Infrastructure Element Total</b>		<b>226,420</b>	<b>182,021</b>	<b>160,916</b>	<b>218,504</b>	<b>7,917</b>	<b>74%</b>	<b>0%</b>

Notes:

1. The current budget and estimate at completion excludes escalation

## LANDSIDE ELEMENT BUDGET REPORT

as of 4/30/2010

(dollars in thousands)								
Project #	Description	Current Budget	Committed to Date	Incurred to Date	Estimate at Completion	Variance (Budget-EAC)	% Incurred	% Cont Used
L001A	Demolition of Facility SW Corner of Arbor Vitae and La Cienega	550	298	205	298	252	69%	0%
L002A	Air Freight 1 - Roof Renovation	2,200	2,132	1,891	2,157	43	88%	35%
L003A	AOA Perimeter Fence (World Way West) Phase 3	17,162	16,121	9,546	16,128	1,034	59%	21%
L010A	I-105 Ramp Improvements (Caltrans)	2,000	2,000	0	2,000	0	0%	0%
L005A	Theme Building Restoration	11,523	11,450	10,234	11,523	0	89%	100%
<b>Landside Element Total</b>		<b>33,435</b>	<b>32,001</b>	<b>21,876</b>	<b>32,106</b>	<b>1,329</b>	<b>68%</b>	<b>19%</b>

Notes:

1. The current budget and estimate at completion excludes escalation

## RESIDENTIAL/SOUNDPROOFING ELEMENT BUDGET REPORT

as of 4/30/2010

(dollars in thousands)								
Project #	Description	Current Budget	Committed to Date	Incurred to Date	Estimate at Completion	Variance (Budget-EAC)	% Incurred	% Cont Used
S004A	Aircraft & Noise Monitoring & Management System (ANMMS)-LAX	3,233	3,233	2,810	3,233	0	87%	0%
S002A	Noise Mitigation/Soundproofing (City of LA)	160,000	141,250	137,200	160,000	0	86%	0%
<b>Residential/Soundproofing Element Total</b>		<b>163,233</b>	<b>144,483</b>	<b>140,010</b>	<b>163,233</b>	<b>0</b>	<b>86%</b>	<b>0%</b>

Notes:

1. The current budget and estimate at completion excludes escalation

## TERMINAL ELEMENT BUDGET REPORT

as of 4/30/2010

(dollars in thousands)								
Project #	Description	Current Budget	Committed to Date	Incurred to Date	Estimate at Completion	Variance (Budget-EAC)	% Incurred	% Cont Used
T001A	Elevators and Escalators Replacement	270,000	95,171	22,248	205,170	64,830	11%	0%
<b>Terminal Element Total</b>		<b>270,000</b>	<b>95,171</b>	<b>22,248</b>	<b>205,170</b>	<b>64,830</b>	<b>11%</b>	<b>0%</b>

Notes:

1. The current budget and estimate at completion excludes escalation

## TBIT RENOVATION ELEMENT BUDGET REPORT as of 4/30/2010

(dollars in thousands)

Project #	Description	Current Budget	Committed to Date	Incurred to Date	Estimate at Completion	Variance (Budget-EAC)	% Incurred	% Cont Used
B001A	TBIT Interior Improvements and Baggage Screening Facilities	750,174	732,942	718,522	732,529	17,644	98%	89%
B002A	Passenger Boarding Bridges (PBB) Replacements & Extensions	5,169	4,444	4,110	4,444	725	92%	0%
<b>TBIT Renovation Element Total</b>		<b>755,343</b>	<b>737,386</b>	<b>722,632</b>	<b>736,973</b>	<b>18,369</b>	<b>98%</b>	<b>89%</b>

Notes:

1. The current budget and estimate at completion excludes escalation

## PROJECTS IN DEFINITION BUDGET REPORT as of 4/30/2010

(dollars in thousands)								
Project #	Description	Current Budget	Committed to Date	Incurred to Date	Estimate at Completion	Variance (Budget-EAC)	% Incurred	% Cont Used
A006B	Interim Taxiway Safety Improvement Project (ITSIP)	70,000	1,615	0	N/A	N/A	N/A	N/A
U003A	IT Infrastructure Construction	66,300	6,961	5,766	N/A	N/A	N/A	N/A
U011A	Electrical Switchboard & Panelboard Replacements (T2, 3, 5, 6, 7,8)	54,099	0	0	N/A	N/A	N/A	N/A
U015A	Parking Revenue Control System (VNY)	638	0	0	N/A	N/A	N/A	N/A
L009A	CTA Security Barriers - Phase 2	2,000	0	0	N/A	N/A	N/A	N/A
L012A	Coastal Dunes Improvement Project	3,000	0	0	N/A	N/A	N/A	N/A
T004A	Passenger Boarding Bridges Replacement (T1, T3, T6, Remotes)	22,366	0	0	N/A	N/A	N/A	N/A
T006A	Fire Life Safety System Replacement (T1)	2,250	0	0	N/A	N/A	N/A	N/A
T007A	Fire Life Safety System Replacement (T2)	2,250	0	0	N/A	N/A	N/A	N/A
<b>Projects in Definition Element Total</b>		<b>222,903</b>	<b>8,576</b>	<b>5,766</b>	N/A	N/A	N/A	N/A

Notes:

1. The current budget and estimate at completion excludes escalation

---

## PROGRAM CASH FLOW OVERVIEW

### User's Guide - Cash Flow

The information provided herein is designed to furnish users of the Airport Development Group (ADG) Cash Flow Reports with greater knowledge and a better understanding of the composition of the various components of the cash flow report.

**Current Budget** - Is the estimated cost of the project as it was planned plus or minus any processed revisions.

**Prior Expended** - Represents the sum of all payments made through the end of the previous fiscal year.

**FY2010** - Is the forecast expenditure for the Fiscal Year 2010 (1-Jul-09 thru 30-Jun-09).

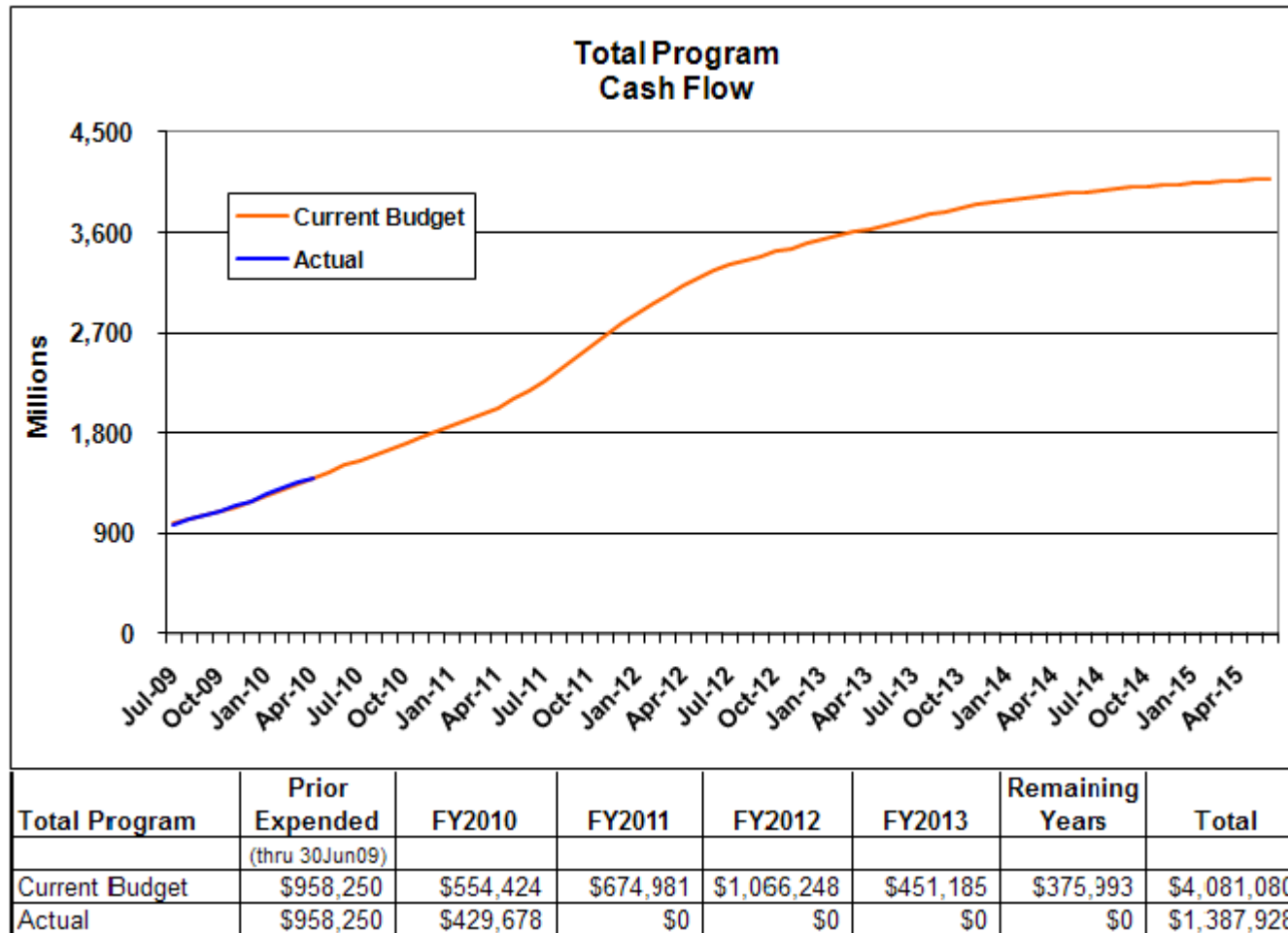
**FY2010 Actual** - Represents the sum of all payments made during the Fiscal Year 2010.

**FY2011, FY2012, and FY2013** - Is the forecast expenditure for the Fiscal Years 2011, 2012, and 2013, respectively.

**Remaining Years** - Represents any expenditure currently forecast beyond FY2013.

## PROGRAM CASH FLOW

as of 4/30/2010



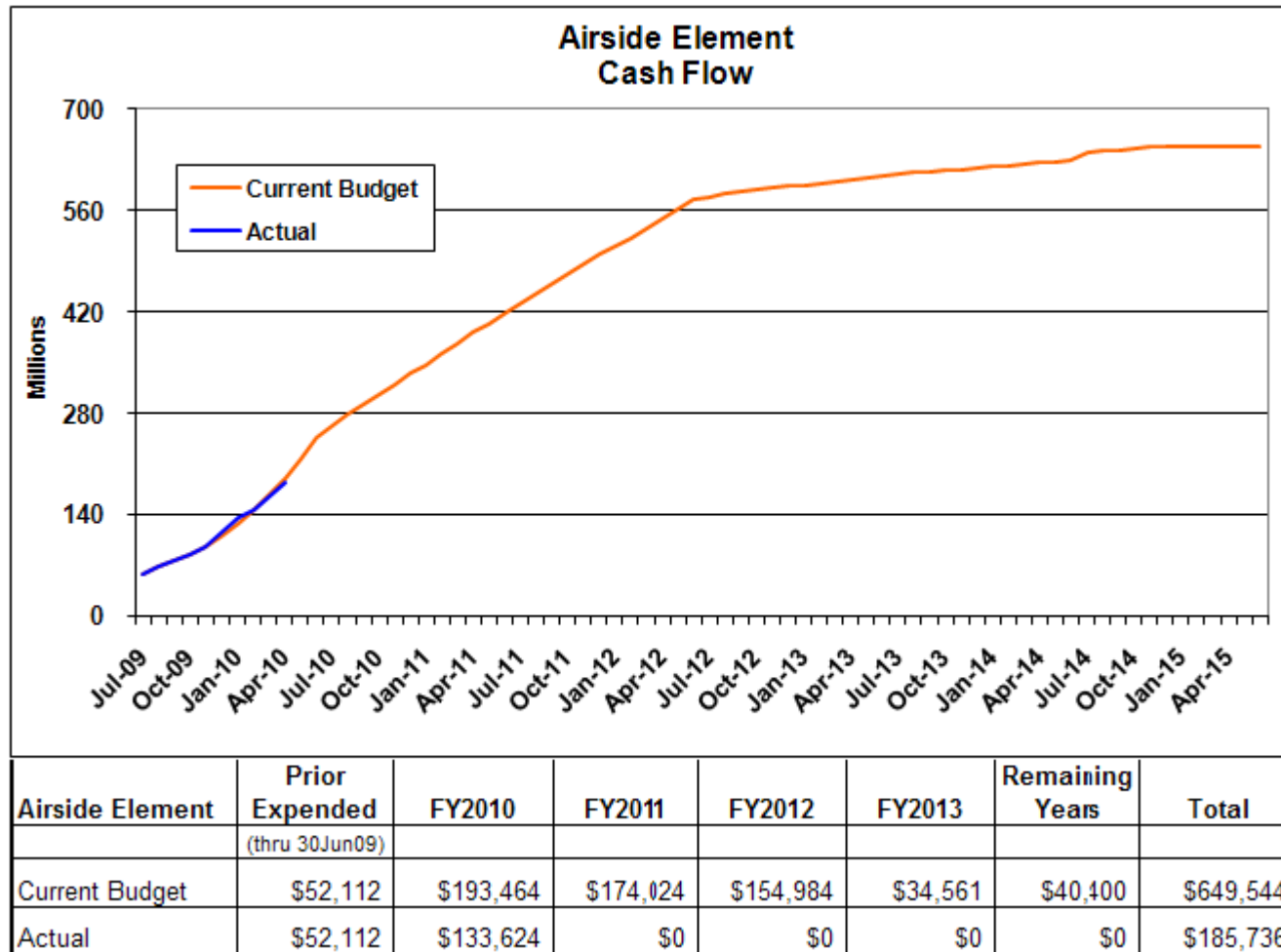
Notes:

1. Unallocated Contingency is not included.
2. Escalation is not included.



## AIRSIDE ELEMENT CASH FLOW

as of 4/30/2010

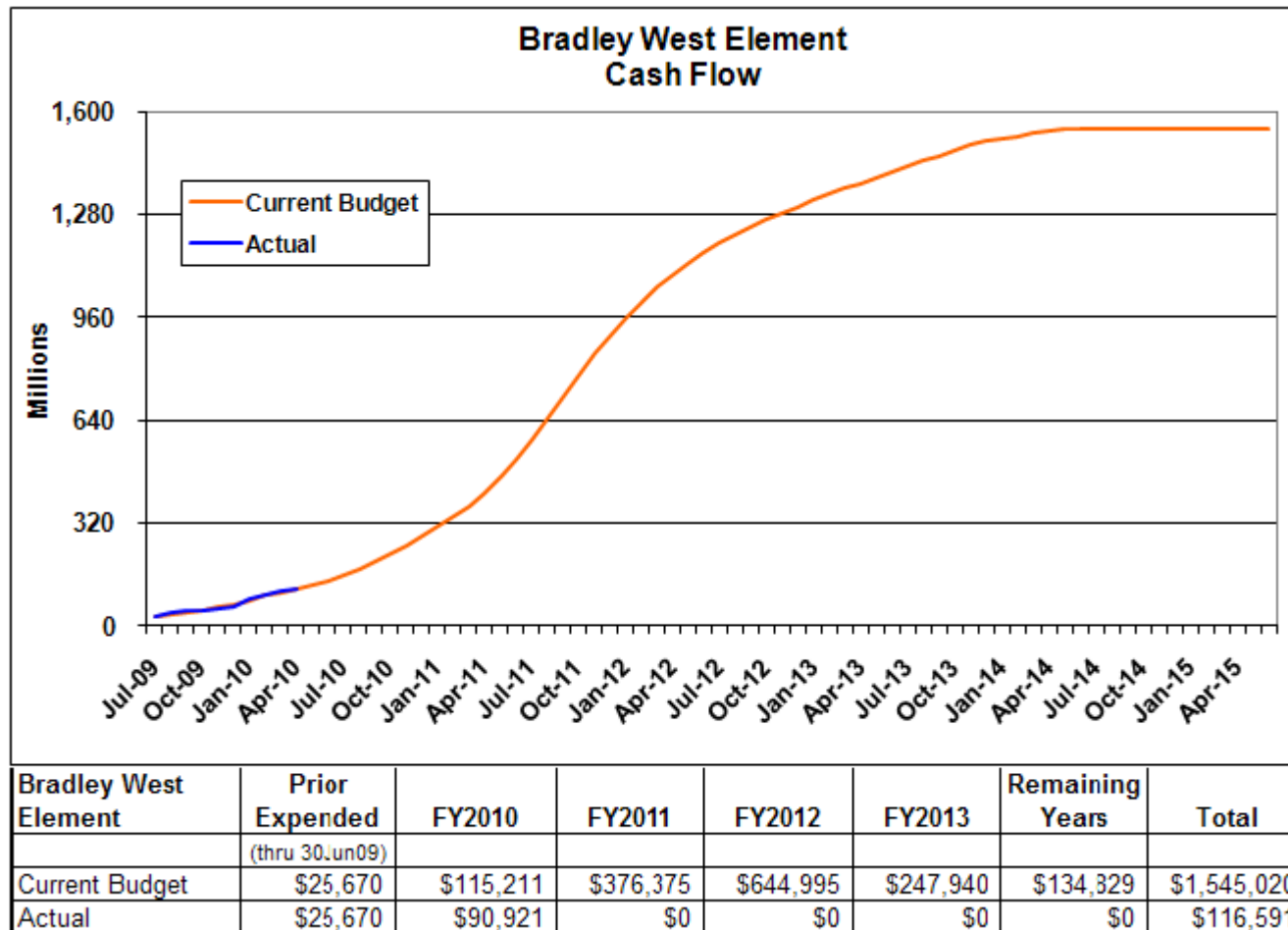


Notes:

1. Unallocated Contingency is not included.
2. Escalation is not included.

## BRADLEY WEST ELEMENT CASH FLOW

as of 4/30/2010

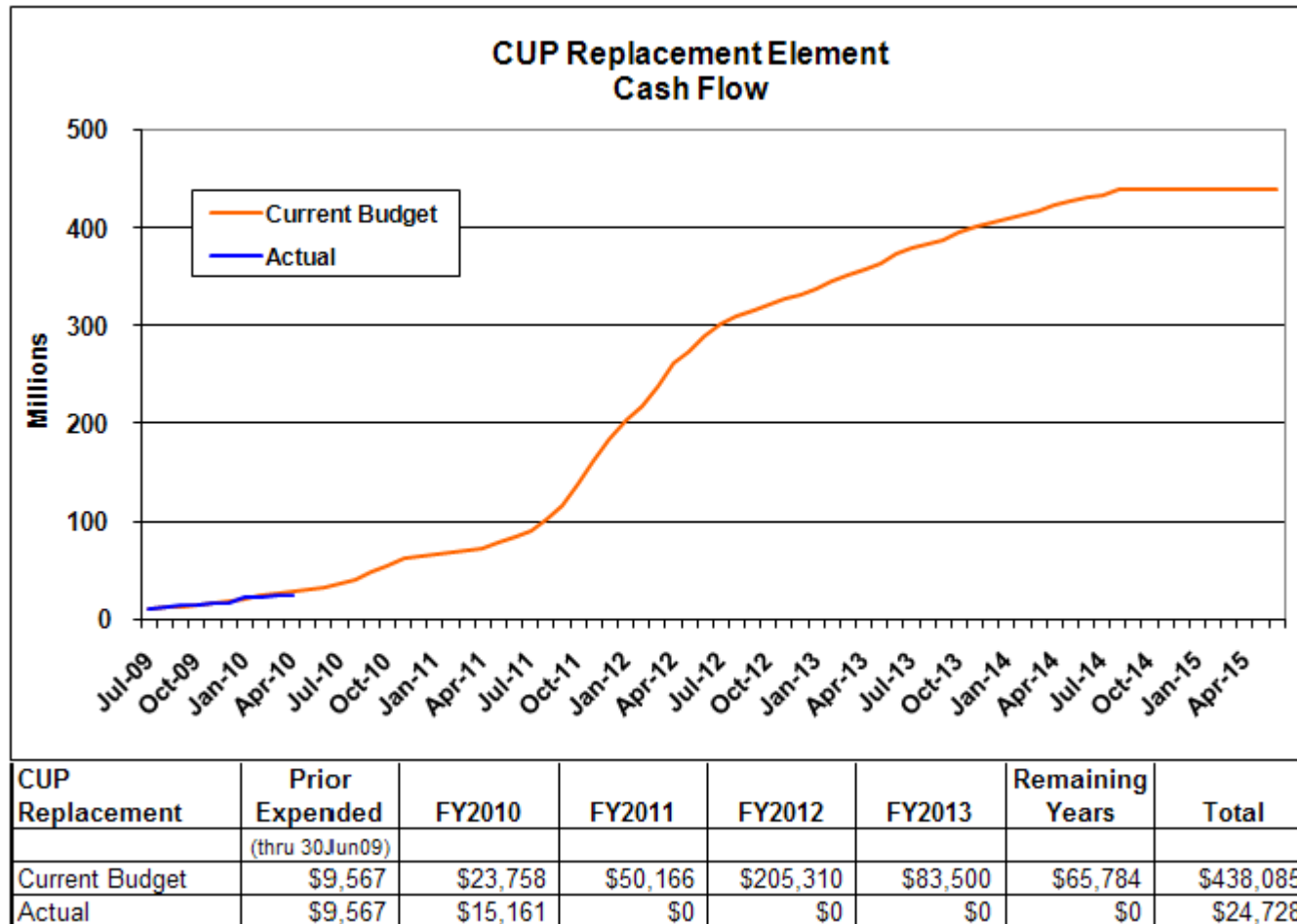


Notes:

1. Unallocated Contingency is not included.
2. Escalation is not included.

## CUP REPLACEMENT CASH FLOW

as of 4/30/2010

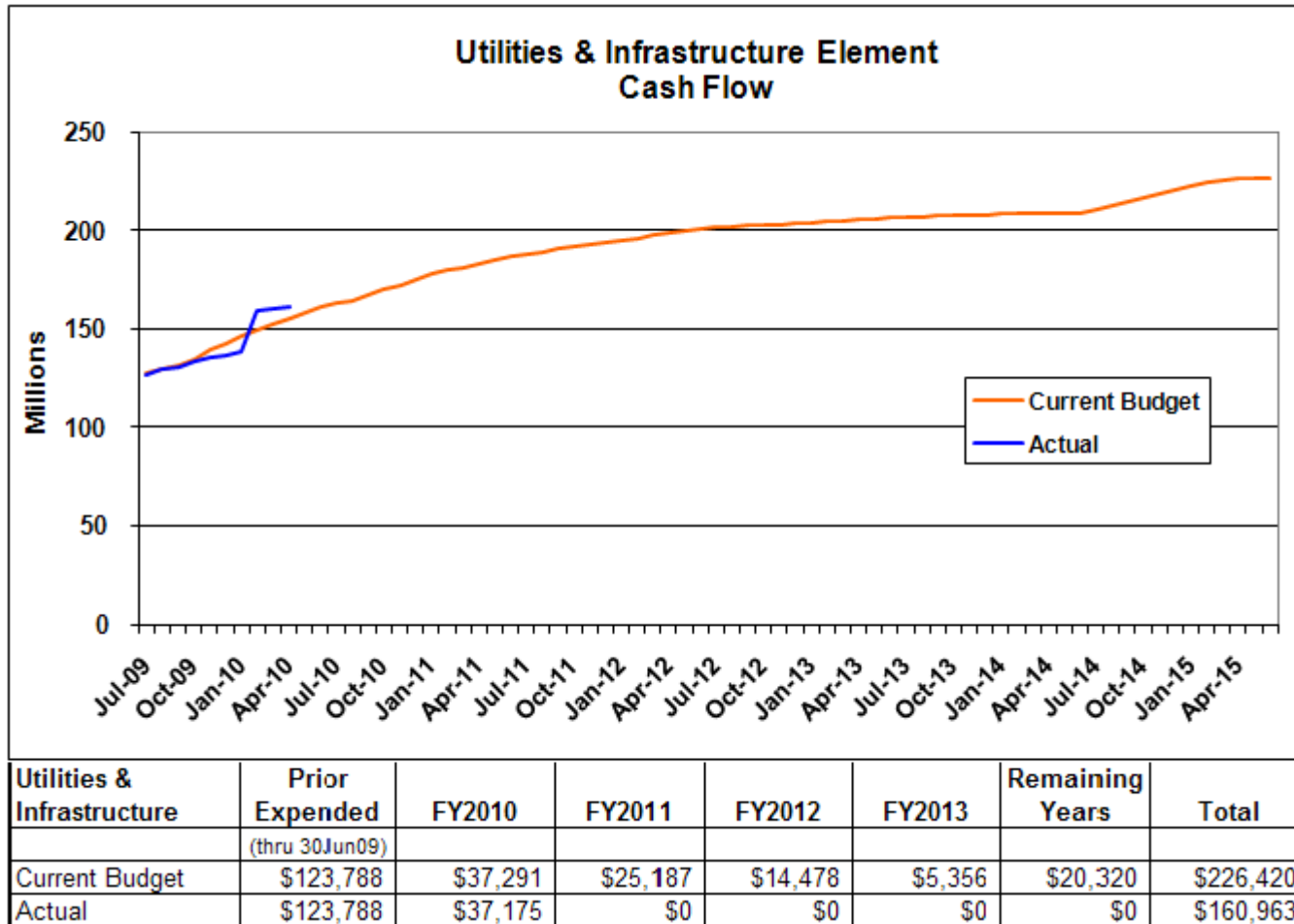


Notes:

1. Unallocated Contingency is not included.
2. Escalation is not included.

## UTILITIES & INFRASTRUCTURE ELEMENT CASH FLOW

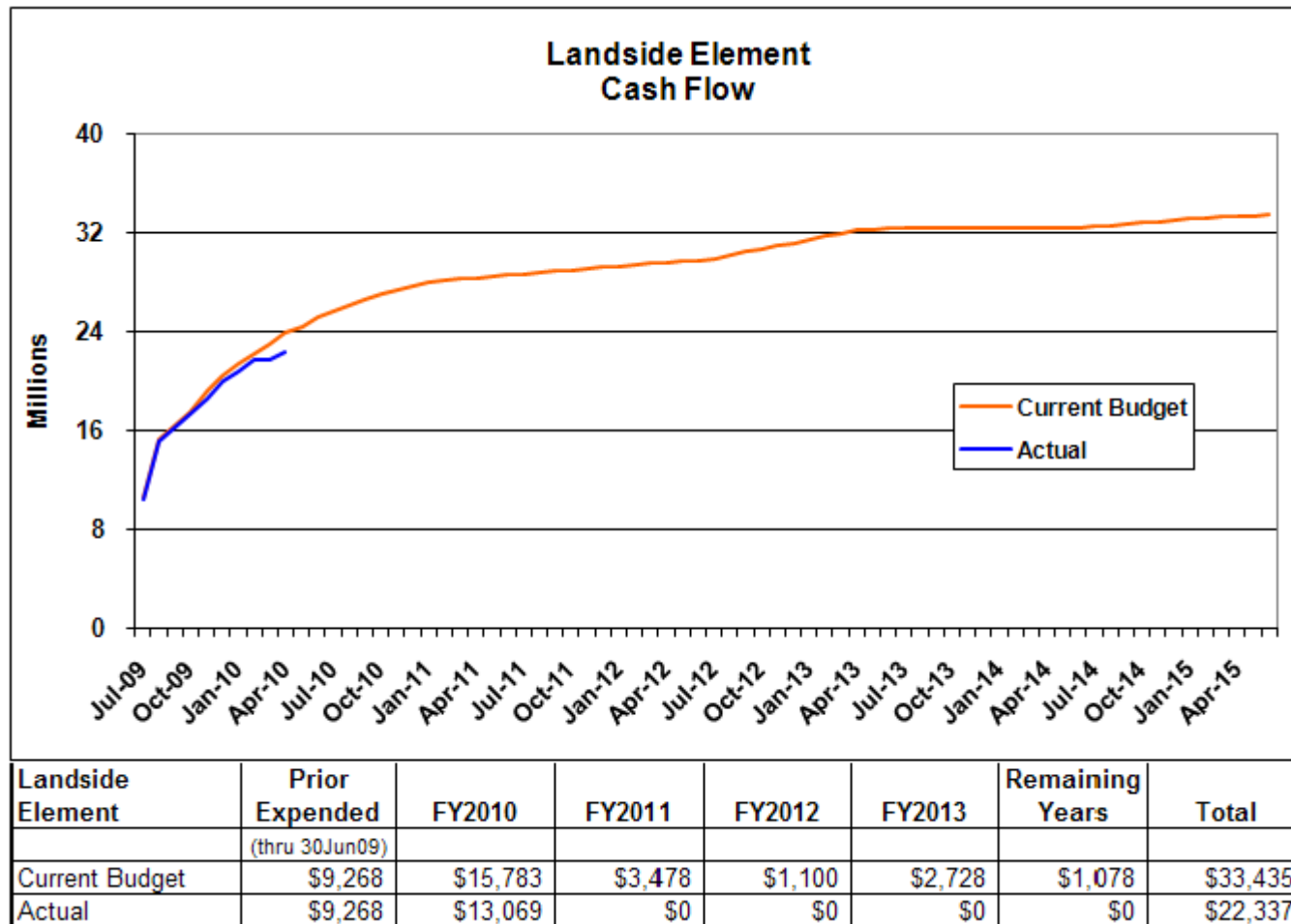
as of 4/30/2010



- Notes:
1. Unallocated Contingency is not included.
  2. Escalation is not included.

## LANDSIDE ELEMENT CASH FLOW

as of 4/30/2010

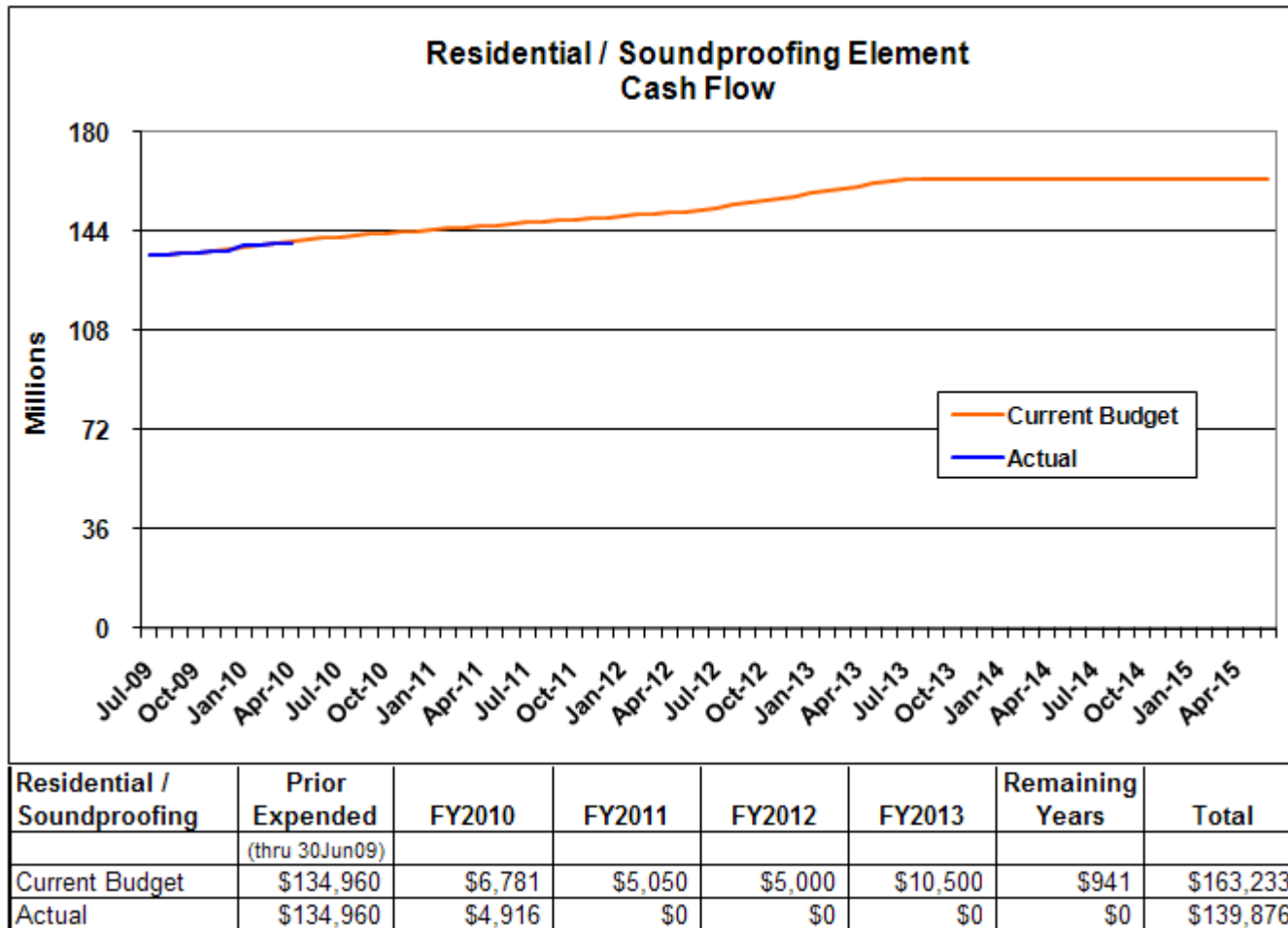


Notes:

1. Unallocated Contingency is not included.
2. Escalation is not included.

## RESIDENTIAL/SOUNDPROOFING ELEMENT CASH FLOW

as of 4/30/2010

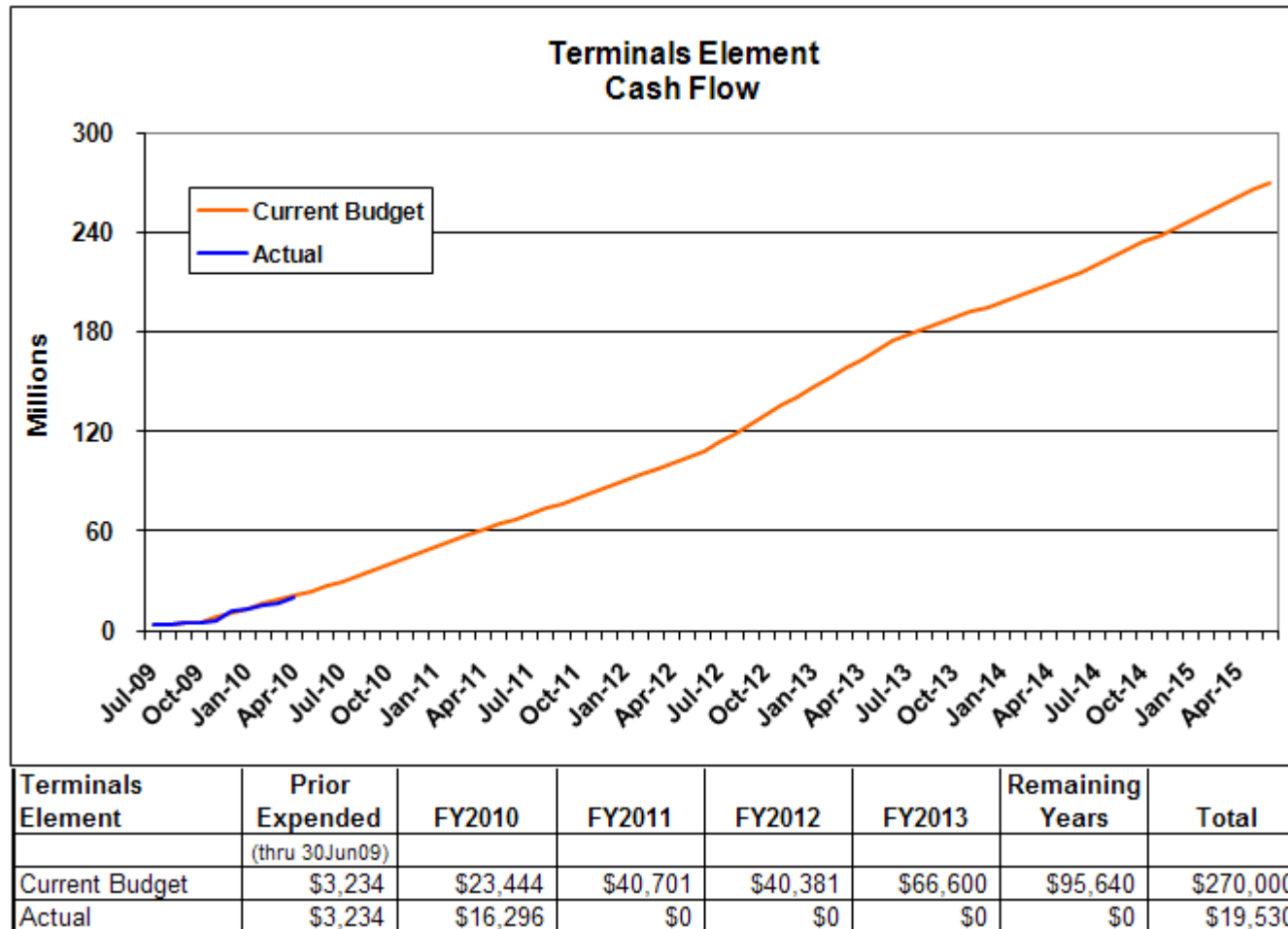


Notes:

1. Unallocated Contingency is not included.
2. Escalation is not included.

## TERMINALS ELEMENT CASH FLOW

as of 4/30/2010

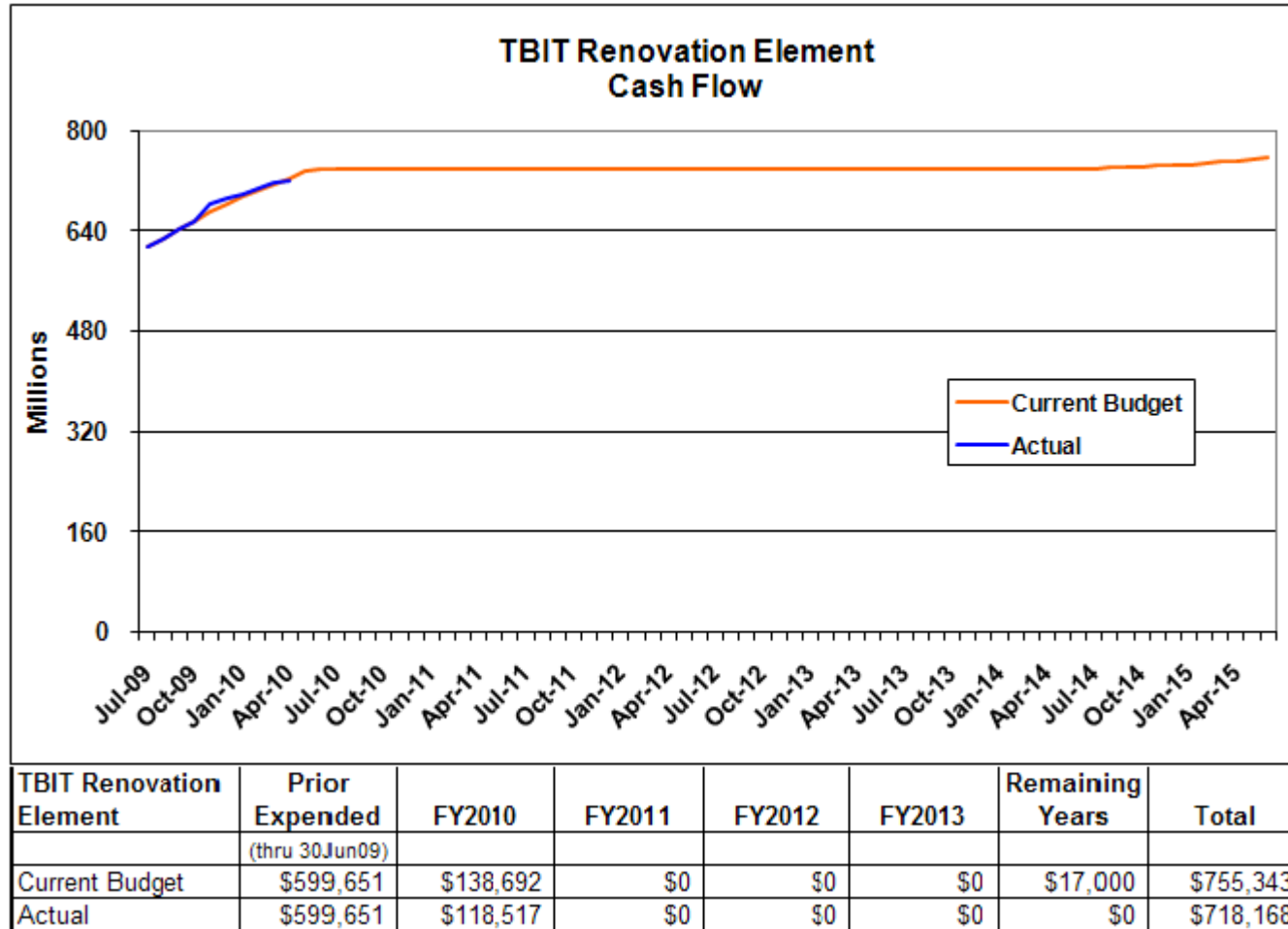


Notes:

1. Unallocated Contingency is not included.
2. Escalation is not included.

## TBIT RENOVATION ELEMENT CASH FLOW

as of 4/30/2010



Notes:

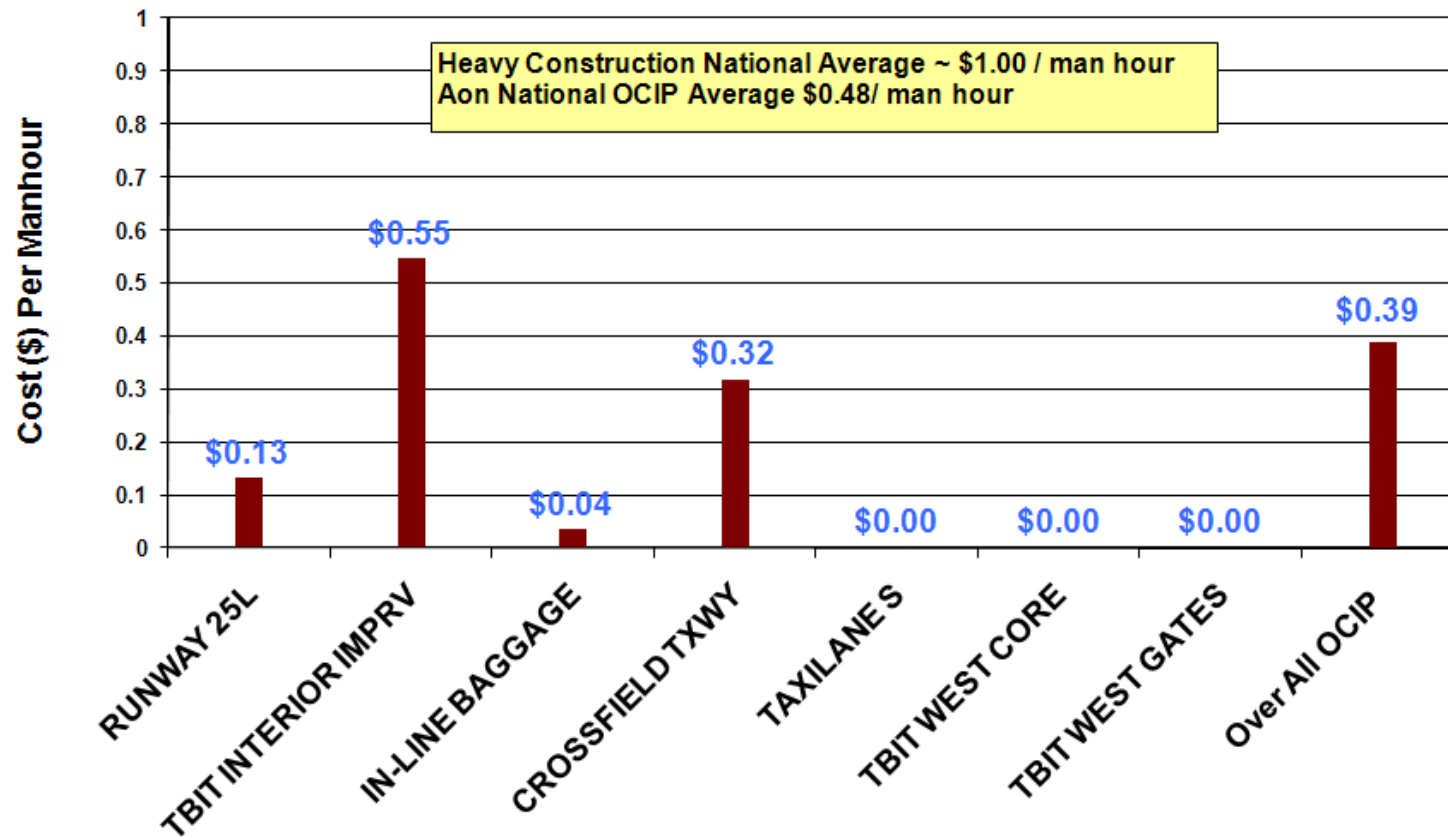
1. Unallocated Contingency is not included.
2. Escalation is not included.



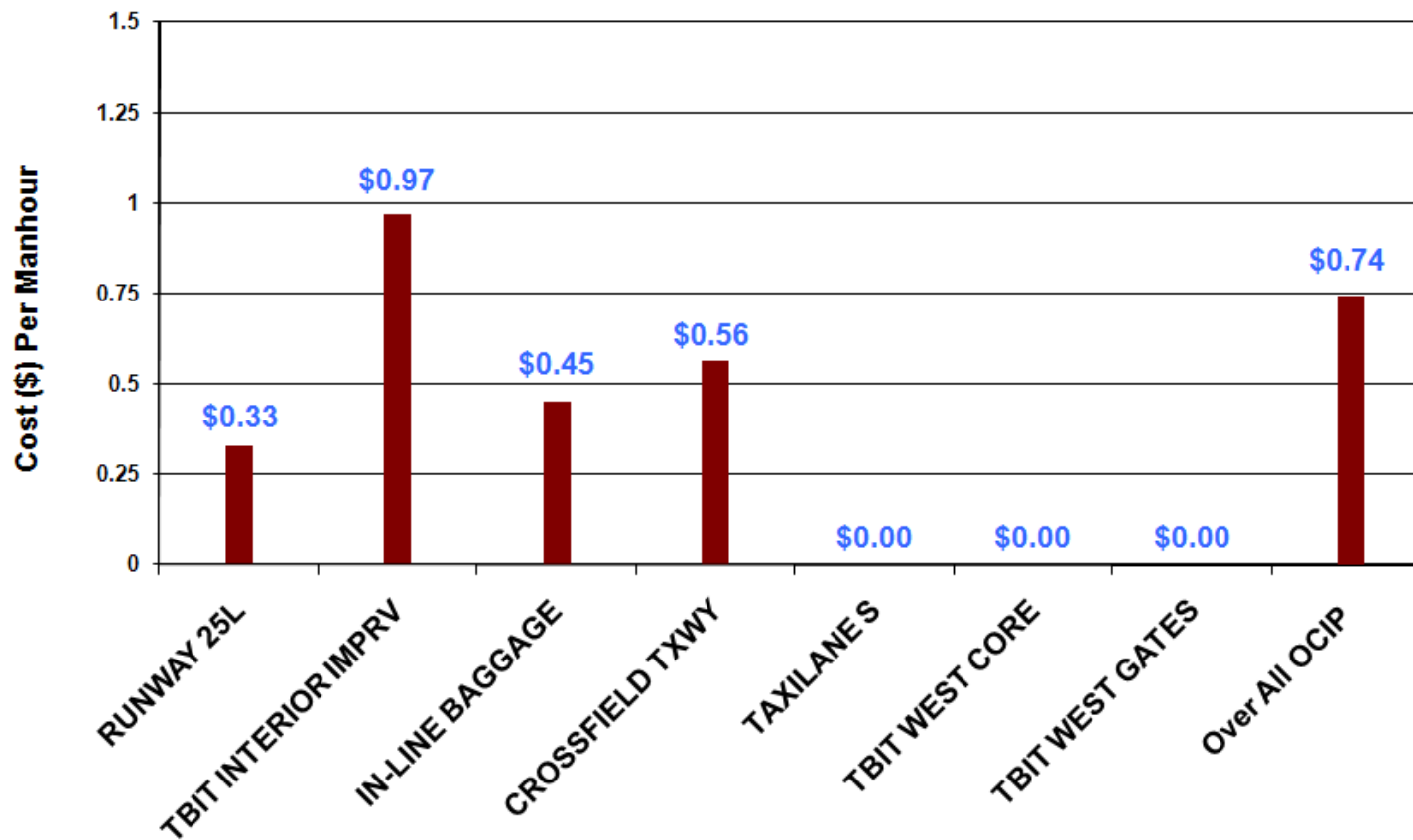
## CHANGE ORDERS as of 5/31/2010

Element	Project	Contract	Change Order No	\$0 - \$150K	\$150K - \$1Mil	> \$1Mil	Notes
<b>Airside Element</b>							
<b>M101A - CROSSFIELD TAXIWAY PROJECT</b>							
	DA-4331		0024	\$68,074			Taxiway R Bridge Plans, Pump Station Mechanical Plans, LADOT Traffic Signals, Secondary Roof Drain at Pump Station, Methane Detector in Control Circuit
	DA-4331		0025		\$300,000		Additional Requirements for the Federal AIP Funding, Non Compensable 26 Calendar Day Time Extension, 56 Calendar Day Extension
	DA-4331		0026	\$115,468			Additional Fire Hydrant
<b>Bradley West Element</b>							
<b>CUP Replacement Element</b>							
<b>Utilities &amp; Infrastructure Element</b>							
<b>Landside Element</b>							
<b>L003A - AOA PERIMETER FENCE (WORLD WAY WEST) PHASE 3</b>							
	DA-4315		0008	\$18,119			Modification of Type 2 AOA Fence
	DA-4315		0009	\$82,739			Modification of Ductbank
<b>Residential/Soundproofing Element</b>							
<b>Terminal Element</b>							
<b>TBIT Renovation Element</b>							
<b>B001A - TBIT INTERIOR IMPROVEMENTS AND BAGGAGE SCREENING FACILITIES</b>							
	DA-4141		0385	\$34,425			Trespa Pattern Change at Arrivals, Temporary Signage, Finish Hardware Gate 1211B
	DA-4141		0386	\$62,838			Provide 24-Hour Security Guard, Temporary Signage July 08 to Dec 08, Fire Watch Atrium February 2010, Existing Louvers Doors 1209B, 1101A, Post 21 Guard Costs
	DA-4141		0387	\$148,839			Fire Patching, Fireproof Patching D2, Fireproofing Departures

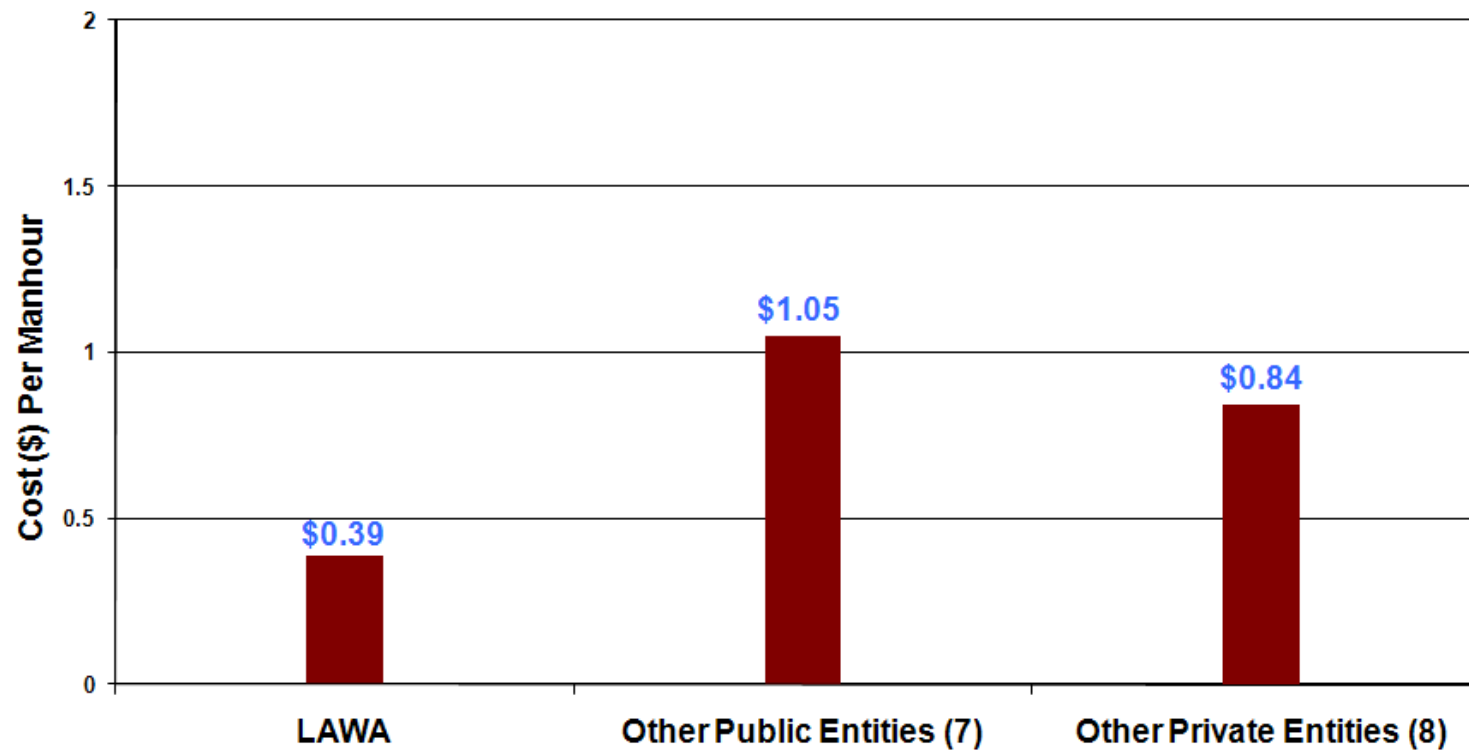
**LAWA OCIP Workers Compensation Loss Performance**  
 - as of April 30, 2010 -



**LAWA OCIP General Liability Loss Performance**  
 - as of April 30, 2010 -



**Current Large OCIP Projects  
Comparison of Workers Comp Costs Per Manhour**



## MWBE/DBE Subcontractor Utilization Summary Report as of 4/30/2010

Firm	Contract No.	DBE or M/WBE Contract	Proposed Level of	Achieved Participation to Date*		Remarks
				M/WBE	DBE	
Camp Dresser & McKee	DA-4201A	M/WBE	20.00 %	28.28 %	2.76 %	
DMJM Aviation, Inc.	DA-4260	DBE	12.00 %	N/A %	18.65 %	
Fentress Architects	DA-4274	DBE	9.30 %	15.94 %	7.02 %	
Flatiron West, Inc.	DA-4398	DBE	1.00 %	N/A %	2.80 %	
Griffith Company	DA-4338	M/WBE	6.60 %	N/A %	N/A %	Awaiting Contractor Submittal
Hatch Mott MacDonald, LLC	DA-4275	DBE	11.63 %	N/A %	21.52 %	
Hellmuth, Obata + Kassabaum, Inc.	DA-4313	M/WBE	25.00 %	39.75 %	N/A %	
Paragon Project Resources, Inc.	DA-4332	M/WBE	16.00 %	5.03 %	N/A %	
Paslay Management Group	DA-4324	M/WBE	10.00 %	11.43 %	N/A %	
R & L Brosamer	DA-4331	M/W/DBE	15.40 %	6.94 %	0.96 %	Combined = MBE+WBE+DBE
Tobo Construction	DA-4354	DBE	0.00 %	18.91 %	0.00 %	
W.E. O'Neil	DA-4371	M/WBE	6.80 %	10.45 %	N/A %	
Walsh Austin Joint Venture - Construction (Gates)	DA-4337	M/WBE	14.00 %	0.61 %	N/A %	
Walsh Austin Joint Venture - Pre-Construction (Core)	DA-4382	M/WBE	20.00 %	24.34 %	N/A %	
<b>Total Participation:</b>	<b>N/A</b>	<b>N/A</b>	<b>N/A</b>	<b>9.39%</b>	<b>7.64%</b>	
<b>Total Combined Participation:</b>	<b>N/A</b>	<b>N/A</b>	<b>N/A</b>	<b>17.03%</b>		

\*Achieved Participation to Date includes progress in the pledged program and progress outside of the pledge.