



Airports Development

Executive Management

Program Status Report

December 31, 2010

TABLE OF CONTENTS

Project Status	_____	3
Work in Progress	_____	31
Schedule	_____	33
Financial	_____	42
OCIP	_____	68
MWBE/DBE	_____	71

ELEMENT OVERVIEW

Purpose

This report is a tool to provide status of the Capital Projects for the Airports Development Group. The report presents status per project followed by the Master Program Schedule, a Financial section with Budget, Cash Flow and Change Orders, OCIP, MWBE/DBE, and a section listing Projects in Definition.

Airside Element

The Airside Element consists of multiple projects necessary for accommodating the movement of large aircraft between the north and south runways; reconfiguring traffic movement to accommodate the Tom Bradley International Terminal (TBIT) expansion and modernization program; and provide airfield improvements as required by Airfield Operations, the Federal Aviation Administration and other Federal and State regulatory agencies.

Bradley West Element

The Bradley West Element provides for certain improvements identified in the approved LAX Master Plan, specifically related to development of new aircraft gates at the Tom Bradley International Terminal. The new gates will support the airport's ability to effectively and efficiently accommodate new large aircraft, such as the Airbus A380, Boeing 747 and Boeing 747-8. In addition, the project calls for substantial improvements related to the concourses and central core area of the Tom Bradley International Terminal, including:

- construction of new north and south concourses at the terminal, west of the existing concourses, which would be removed;
- construction of eight aircraft gates and associated loading bridges and apron areas, along the west side of the new terminal concourses;
- relocation and consolidation of existing aircraft gates along the east side of the Tom Bradley Terminal;
- renovation and enlargement of the existing U.S. Customs and Border Protection areas within the central core of the terminal; and
- construction of the secure passenger corridors between Terminals 3 and 4, and the Bradley Terminal.

ELEMENT OVERVIEW - Continued

Central Utility Plant (CUP) Replacement Element

The CUP Replacement Element includes replacing the existing CUP, constructed in 1961, and the co-generation facility, brought into service in 1985, which are considered obsolete and inefficient relative to present-day technology, the distribution network between the CUP and the terminals, and various mechanical/electrical infrastructure improvements within the terminals.

Utilities and Infrastructure Element

These capital improvement projects are critical utility and infrastructure elements that support Terminal and Airport operations within the Central Terminal Area (CTA). Current construction projects include the In-Line Baggage Screening System program consisting of the construction of fully integrated Transportation Security Administration (TSA) screening equipment in Terminal 3 and removal of lobby machines, plus, the IT Fiber Loop Backbone project which will provide new connectivity between all Terminals and the Telecommunication Building.

Landside Element

The Landside Element undertakes capital projects designed to provide for the efficient and effective movement of people through the airport; and to provide convenient parking for individuals using the airport. Landside projects are typically related to parking lots, public transportation, train stations, tank farms, warehouse and cargo areas and access roads and perimeter fencing.

Residential / Soundproofing Element

LAWA has implemented a voluntary Airport Residential Soundproofing Program (RSP) for aircraft noise impacted areas in the City of Los Angeles. This program is for impacted homes adjacent to the Los Angeles International Airport (LAX) and Van Nuys (VNY).

ELEMENT OVERVIEW - Continued

Terminals Element

Most of LAX's Terminals have been serving their purpose without major renovations or modernization efforts over the years. As needs change, the Terminal spaces and structures need repairs, upgrades, modernization, and standardization to satisfy these changing demands. From modernizing elevators and escalators with standardized devices to updating fire/life safety systems, the Terminals Element is focused on implementing these necessary improvements.

TBIT Renovation Element

The Tom Bradley International Terminal (TBIT) was designed in 1982 and constructed for the opening of the 1984 Olympics that were held in Los Angeles. In the intervening years, other than minor improvements and concessions additions, the terminal had not been remodeled or modernized and did not provide comparable standards, amenities, and aesthetics realized at other international and national airports around the world. The aesthetics and finishes at TBIT were based on 1980s design. The lighting in most areas was not up to current standards, the paging system was inadequate, and some areas did not meet current building code requirements including the Americans with Disabilities Act (ADA). Contact gates at TBIT were inadequate to accommodate the "New Large Aircrafts", e.g. Airbus A380. Lastly, due to the events following September 11, 2001, the Transportation Security Administration (TSA) mandated requirements for in-line 100% checked baggage screening of the outbound baggage system at TBIT. The proposed project addresses these deficiencies and new security baggage screening requirements through a comprehensive modernization and upgrade of TBIT.

Work in Progress

This section lists the projects that are in various stages of pre-development. Typically, these projects represent efforts for which LAWA has committed funding for the design; not the construction. A project in this category will experience variability as the design is refined. If approved, projects in Work in Progress will be moved into the appropriate execution element. If not approved, projects will be dropped from this report.

AIRSIDE ELEMENT - Construction Support Facilities (M209A)

Project Description

The project includes the construction of a new aircraft parking ramp/block, new emergency exits for American Airlines Maintenance Hangar, airfield security fencing, building modifications, and other miscellaneous construction activities as may be required.

Planning and Programming Status

Project Definition is complete.

Design Progress

Design is 100% complete.

Construction Progress

First construction contract awarded to Griffith Construction on April 21, 2009.

Notice to Proceed issued June 29, 2009.

Construction is 95% complete.

Budget Status

This project is anticipated to complete on budget.

Schedule Status

The project's original completion date of May 25, 2010 has been extended to February 2011 to accommodate ASDE-X and replacement FAA fiber work.

Issues

AIRSIDE ELEMENT - Crossfield Taxiway Project (M101A)

Project Description

The project entails the construction of a 3,437-foot-long by 100-foot-wide taxiway that connects Taxiway 'B' on the south and Taxiway 'E' on the north. To facilitate this construction, there will be removal of existing deteriorated concrete pavement and the removal of asphalt pavement replaced with Portland Cement Concrete (PCC) and asphalt concrete pavement. This project also constructs a new parallel service road and a replacement apron for Remain Overnight (RON) and the following facilities:

- * Realignment of World Way West and two bridges over the road; one for aircraft crossing as a part of taxiway C13 and the other for vehicular traffic;
- * Taxiway centerline electrical, lighting and signage;
- * Pavement markings, including centerline, edge striping and edge reflectors; and
- * Installation of redesigned drainage and modifications to existing utilities.

Planning and Programming Status

Project Definition is complete.

Design Progress

Design is 100% complete.

Construction Progress

Construction contract awarded to R & L Brosamer Inc. on March 23, 2009.

Construction Notice to Proceed issued May 11, 2009.

Taxiway 'R' opened on May 24, 2010.

Construction is 100% complete.

Budget Status

The final change orders are being negotiated. This project is expected to complete under budget.

Schedule Status

Anticipated project completion is January 2011.

Issues

AIRSIDE ELEMENT - LAX Aircraft Rescue and Fire Fighting Facility (M107A)

Project Description

The new Aircraft Rescue and Fire Fighting Facility (ARFF) is proposed to be constructed as a replacement for the existing Fire Station No. 80. This new facility will be located on World Way West just west of Remain Over Night (RON) aircraft aprons situated relative to the mid-points of the outmost runways (Runway 6L/24R on the north and Runway 7R/25L on the south). The proposed ARFF would provide approximately 27,500 square feet of administrative office area and station living quarters within a 2-story structure, six bays for emergency vehicles along with a service bay, storage area for various emergency response equipments, and briefing and training rooms.

Planning and Programming Status

Project Definition is complete.

Design Progress

Design is 100% complete.

Construction Progress

Construction contract awarded to Tobo Construction on June 10, 2009.

Administrative Notice to Proceed issued July 10, 2009.

Construction Notice to Proceed issued September 4, 2009.

Construction is 100% complete.

The Grand Opening of the LAX Aircraft Rescue and Firefighting Station 80 was held in November 22, 2010.

Budget Status

This project is expected to complete under budget.

Schedule Status

Close-out negotiations are on-going. Anticipated project completion date is early 2011.

Issues

AIRSIDE ELEMENT - Bradley West - Aprons (M205A)

Project Description

The Bradley West Aprons project contains an East and West component. The Bradley West Aprons project consists of approximately 34,000 square yards of pavement and associated drainage covering the aprons on the west side of the north and south Concourses as well as the apron west of the Core. This apron construction includes all grading, utilities, airfield signage and lighting; construction of LADWP power and communication ductbanks; and the LAWA power and communication ductbanks.

The Bradley East Aprons project entails construction of approximately 121,000 square yards of pavement and associated drainage from the edge of the new Concourses to the edge of Taxilanes C10/D10. It includes all grading, drainage, utilities, airfield signage and lighting; construction of LADWP power and communication ductbanks; and the LAWA power and communication ductbanks.

Planning and Programming Status

Project Definition is complete.

Design Progress

West Aprons awarded design is 100% complete.
East Aprons design is 50% complete.

Construction Progress

West Aprons - Construction on April 8, 2010 through June 8, 2012
The Bradley West Gates and Core contracts awarded to Walsh-Austin.

East Aprons -
No construction contracts awarded.

Budget Status

This project is tracking on budget.

Schedule Status

This project progressing on schedule.

Issues

AIRSIDE ELEMENT - Taxilane 'S' (M204A)

Project Description

This project undertakes the relocation of certain ancillary and support facilities; and constructs a 3,785-foot long Taxilane to connect Taxiway 'B' on the south and Taxiway 'E' on the north. Taxilane 'S' will be constructed as part of a 400 foot wide Portland Cement Concrete (PCC) paved strip which will be the first part of the future Dual Taxilane / Taxiway System between the proposed Midfield Satellite Concourse and the Tom Bradley International Terminal. The centerline is located 242 feet west of the existing Taxiway 'Q' centerline. A 169-foot-Object Free Area (OFA) will be provided on the east side of the Taxilane 'S' centerline in accordance with the FAA approved Airport Layout Plan (ALP). This construction also includes the relocation of fuel lines and other utilities, all grading, airfield signage and lighting, construction of LADWP power and communication ductbanks; and the LAWA power and communication ductbanks. Additionally, Taxiway D will be extended approximately 1,000 feet west from Taxiway Q.

The project also includes the construction of approximately 60,000 square yards of pavement and associated drainage covering the aprons on the west side of the north and south Concourses as well as the apron west of the Bradley Core. This apron construction includes all grading, utilities and airfield signage; construction of LADWP power and ductbanks; and the LAWA power and communications ductbanks.

Planning and Programming Status

Project Definition is complete.

Design Progress

Design is 100% complete.

Construction Progress

Construction contract awarded to Flatiron West, Inc. on December 7, 2009.
Administrative Notice to Proceed issued on December 18, 2009.

Construction Notice to Proceed issued on March 1, 2010.

Construction is 21% complete.

Budget Status

Additional funds may be required for the changes that are currently being negotiated. These changes include two Change Orders totaling approximately \$5.2 million for Security Access Post No. 5 Revisions and Fire & Domestic water lines modifications.

AIRSIDE ELEMENT - Taxilane 'S' (M204A) - Continued

Schedule Status

Taxilane 'S' is anticipated to open May 2011. However, schedule impacts from various sources including additional contaminated soil, Word Way West utilities, resequencing the DWP duct bank installation, and guard post 5 design revisions are threatening this completion date. As an attempt to mitigate schedule impacts, existing Taxiway S will remain closed permanently. Recovery schedule has been requested from Flatiron in November 2010.

Issues

- * Provide new natural gas service to the Bradley West across new Taxilane 'S'.
- * Service Road S is scheduled to be permanently closed for public access in January 2011. New relocated Service Road S is anticipated to open along with Taxilane S in May 2011.
- * New underground power cutovers to American Airlines Hangars will occur in January 2011.
- * New storm drain construction south of the Concourse Construction Package (CCP) may need to be accelerated to provide construction access for Walsh Austin.
- * Concrete batch plant is scheduled to be delivered to site in January 2011, with production paving starting at the end of January.

AIRSIDE ELEMENT - Taxilane 'T' (M306A)

Project Description

The project consists of the construction of a 3,166-foot long Taxilane to connect Taxiway 'C' on the south and Taxiway 'D' on the north. Taxilane 'T' will be constructed as part of a 300 ft. wide Portland Cement Concrete (PCC) paved strip which will be the second part of the future Dual Taxilane / Taxiway System replacing existing Taxiways 'Q' and 'S', west of reconfigured Tom Bradley International Terminal (TBIT). The Taxilane 'T' centerline is located 818 feet west of the existing Taxiway 'Q' centerline. A 169-foot-Object Free Area (OFA) will be provided on the west side of the Taxilane 'T' centerline in accordance with the FAA approved Airport Layout Plan (ALP). This construction also includes the Taxilane "T" Service Road, the relocation of fuel lines and other utilities, all grading, airfield signage and lighting, construction of LADWP power ductbanks; and the LAWA power and communication ductbanks. This Scope of work also includes associated projects which consist of the Demo AA Low Bay Hanger, Relocate and Demo H2O Deluge System, Demo Existing Sky Chef airline catering facility, Demo AA (former TWA) Hangar, an Emission Reduction Credit and Site Restoration of Southwest Apron Remain Overnight (RON) parking area.

Planning and Programming Status

Project Definition is complete.

Design Progress

The design for the Southwest Apron Remain Overnight (RON) parking area was awarded to Post, Buckley, Schuh & Jernigan, Inc. (PBS&J) in September 2010.

The design contract for Taxilane T was awarded to Kimley Horn & Associates on November 15, 2010.

The design of the Demo AA Low Bay Hangar and deluge system is underway.

The project definition for the Southwest Apron was completed in November 22, 2010.

Construction Progress

No construction contracts awarded.

Budget Status

This project is tracking on budget.

Schedule Status

Notice to Proceed was issued in December 30, 2010 for the design of Taxilane T. Task Order 1 was negotiated with PBS&J for the design of the Southwest Apron Remain Overnight Parking (RON).

Issues

Delayed availability of AA Leaseholds may impact project schedule.

AIRSIDE ELEMENT - Demolition of Existing Concourses (M210A)

Project Description

Upon completion of the new Bradley West Concourses, this project includes demolition of the existing concourses with the exception of Gate 123, demolition of any existing utilities and restores the site to an appropriate state for Apron construction.

Planning and Programming Status

Project Definition is complete.

Design Progress

No design contract awarded.

Construction Progress

No construction contract awarded. Currently evaluating the merits of adding this scope to the Walsh Austin Joint Venture contract.

Budget Status

This project is tracking on budget.

Schedule Status

This project is progressing on schedule.

Issues

AIRSIDE ELEMENT - Pavement Management Program - VNY Taxilane A2 Rehabilitation and RSA Improvements (A010A)

Project Description

This project will rehabilitate the existing asphalt concrete pavement for Taxilane A2 and construct a dual taxilane, among other improvements. Additionally, this project will improve airfield lighting and signage for Taxilane A2 and improvements on Runway Safety Area (RSA) for Runway 16L/34R.

Planning and Programming Status

Project Definition is complete.

Design Progress

Design is 100% complete.

Construction Progress

Construction contract awarded to Griffith Company on August 2, 2010.
Administrative Notice to Proceed was issued on September 7, 2010.

Budget Status

This project is tracking on budget.

Schedule Status

Construction Notice to Proceed was issued in November 8, 2010. The project's original completion date of February 2011 was extended to March 2011.

Issues

BRADLEY WEST ELEMENT - Bradley West Gates (M201A)

Project Description

The project consists of the construction of new double-loaded North and South Concourses at Tom Bradley International Terminal (TBIT). The configuration of the concourses will be based upon the approved aircraft parking layout consisting of nine (9) A380 gates and five (5) Airplane Design Group (ADG) V gates and three (3) narrow-body gates. In addition, the work will consist of constructing approximately 540,000 sq ft of space for passenger services (concessions, toilets etc.), building systems (mech/elect/plumbing), building maintenance, airline operations, retail/food service concessions, concessions storage areas, back of house secured circulation space and airline lounges. The project will also include Building Systems (pedestrian transportation systems, HVAC, electrical and plumbing, drainage, lighting), Telephone System, Life Safety Systems (PA and smoke/fire detection, alarm and sprinkler) and Terminal Systems such as Electronic Visual Information Display System (EVIDS), baggage conveyance, building management systems, access control, intrusion alarm, etc.

Planning and Programming Status

Project Definition is complete.

Design Progress

Design is 90% complete.

Construction Progress

Gate #119 site restoration complete.

Structural Steel erection continues in the North Concourse.

Concrete pours on the North and South Concourse basements continue.

Utility relocation/work continues in the North and South Utility Corridors.

Underground Rough-In and Foundation work has commenced on the North Concourse Piers.

Budget Status

This project is anticipated to complete on budget (inclusive of contingency reserves).

Component Guaranteed Maximum Price 01 through 11 have been approved by the Board.

Buy out is 83% complete.

BRADLEY WEST ELEMENT - Bradley West Gates (M201A) - Continued

Schedule Status

Gate 134 Substantial Completion

Target Date: 08/01/12 Forecast Date: 09/25/12

West Gates Substantial Completion

Target Date: 12/12/12 Forecast Date: 12/12/12

East Gates (North and South) Substantial Completion

Target Date: 10/19/13 Forecast Date: 1/24/14

Issues

Dates above are based on WAJV Recovery Plan schedule update.

Current forecast for Gate #134 – Ready for Testing & Commissioning – 12/28/11.

The Project experienced a loss of production due to the rain. The schedule impact is expected to be 10-days.

BRADLEY WEST ELEMENT - Bradley West Core Improvements (M203A)

Project Description

This project will provide improvements to the Federal Inspection Service (FIS) facilities in Tom Bradley International Terminal (TBIT) and allow for the development of new 693,000 sf improved departure level (post security) passenger amenities, including new restrooms, concessions, airline lounges, and administrative offices within TBIT's existing north and south concourses; renovates, improves and enlarges the space used by the FIS and the Customs and Border Patrol (CBP); constructs secure/sterile passenger corridors between TBIT and Terminals 3 and 4; and renovates and improves existing facilities throughout TBIT including re configuration of the security screening checkpoint.

Planning and Programming Status

Project Definition is complete.

Design Progress

Design is 80% complete.

Construction Progress

Work on South Core Egress and Loading Dock continue. Core excavation, Junction Structure installation and demolition of the existing TBIT west wall continue. Core foundation work continues.

Budget Status

This project is anticipated to complete on budget (inclusive of contingency reserves).
Component Guaranteed Maximum Price 01 through 12 have been approved by the board.
Buy out is 53% complete.

Schedule Status

Milestone: New Core Substantial Completion

Target Date: 12/12/12 Current Forecast Date: 12/12/12

Unforeseen conditions in the Core footprint have hindered construction progress, and has delayed the scheduled completion of West Wall Demolition, and Junction Structure installation. These are critical path activities. A 24-hour operation is currently underway to remediate schedule delays.

Issues

**Current forecast date includes the results of recovery planning efforts.
On-going delays to Core Excavation have impacted the forecast completion date.
The Project experienced a loss of production due to the rain. The schedule impact is expected to be 10-days.

BRADLEY WEST ELEMENT - Construction Traffic Mitigations (M203B)

Project Description

The general scope of work involves improving roadway capacity at the two intersections identified by the Bradley West Project Environmental Impact Report as being affected by the Bradley West construction activities and enhancing safety at the future construction contractor parking area.

Planning and Programming Status

Project Definition is complete.

Design Progress

Design is 100% complete.

Construction Progress

BOAC awarded construction contract DA-4478 to Griffith Company on June 28, 2010.

Administrative Notice to Proceed (NTP) was issued on July 29, 2010 and construction NTP issued September 7, 2010.

Overall construction is approximately 40% complete.

The widening work for the first phase of this project, Imperial Hwy. and Main St., is scheduled to be completed in January 2011.

Budget Status

This project is tracking on budget.

Schedule Status

The overall project is on schedule to be complete in May 2011.

Issues

ADG continues to work with the contractor to minimize the impact of construction to the traveling public.

BRADLEY WEST ELEMENT - Art In Public Places (M308A)

Project Description

The program, part of the City of Los Angeles commitment to the community, commissions local artists to produce original artwork for public places. The City passed a law in 1989 allocating one percent of all capital improvement costs to commission art in public places. The Department of Cultural Affairs administers this program through its Public Art Division, aiming to utilize this one percent to contribute enduring, contemporary art experiences to public facilities in the City.

Planning and Programming Status

Proposals from six nominated Los Angeles-based artists have been received and are being reviewed by the Art Oversight Committee (AOC).

Design Progress

No design contract awarded.

Construction Progress

No construction contract awarded.

Budget Status

This project is tracking to the budget.

Schedule Status

This project is anticipated to complete on schedule.

Issues

CUP REPLACEMENT ELEMENT - Central Utility Plant (C001A)

Project Description

The project provides a replacement Central Utility Plant (CUP) to supply heating hot-water and chilled water to the Central Terminal Area (CTA); the required chillers, pumps, generators, boilers and piping to produce and distribute the hot and cold water; and gas turbine driven generators with heat recovery steam generators (co-generation).

The project also includes:

Temporary Power and Associated Relocations Project (TPAR): Construction of a new substation to feed power to the existing CUP and installation of replacement switchgear to allow demolition of the CUP Maintenance Shop Building. This work also includes installing new underground utilities to replace the existing utilities within the footprint of the new CUP.

Utility Distribution System: This project includes interconnection to existing piping as well as providing completely new services to Bradley West and the existing terminals and the replacement or bypassing of some existing piping.

Demolition: Demolition of the existing CUP, cooling towers, an electrical substation and existing maintenance buildings located at the footprint of the new CUP.

Facility Management and Control System (FMCS): FMCS to be located in the control room and related control equipment to be furnished for installation in the mechanical rooms of the terminals.

Planning and Programming Status

Project Definition is complete.

Design Progress

Design is complete for award to the design build contractor.

Construction Progress

TPAR: The Walsh-Austin Joint Venture (WAJV) is responsible for the construction of the TPAR Project. TPAR construction is delayed by 3 weeks to February 2011 due to weather impacts and changes given to contractor.

Interim Maintenance Shop: This portion of the CUP project (a critical path activity) is Permit Ready.

Budget Status

This Design Build contract is under procurement. The bids for the CUP were opened on July 27, 2010 and the low bid was below budget.

CUP REPLACEMENT ELEMENT - Central Utility Plant (C001A) - Continued

Schedule Status

BOAC awarded the Design Build contract on November 15, 2010; and City Council approved it on January 4, 2011. Notice to Proceed for the contractor is currently forecast in January 2011.

Issues

None at present.

UTILITIES & INFRASTRUCTURE ELEMENT - Airport Response Coordination Center (ARCC) (U009A)

Project Description

This project will provide a centralized response coordination center on the 4th floor of the existing Badging Building located at 7333 World Way West at Los Angeles International Airport (LAX). The project will improve efficiency and communication for day to day operations and response to incidents by collocating various shared operational functionalities into one consolidated location. The new Airport Response Coordination Center will co-locate Airfield Operations, Terminal Operations, Construction and Maintenance, non-emergency Airport Police functions, and traffic management staff into a joint use facility. This new office environment, will utilize information technology for audio, video, CCTV, voice, network, Cable TV connections, PCs, and associated video wall and peripherals to improve situational awareness and communication among various Divisions and staff at LAX.

Planning and Programming Status

Project Definition is complete.

Design Progress

Design is 100% complete.

Construction Progress

The construction contract was awarded to Technion Contractors, Inc. (TCI) on May 17, 2010 and the Notice to Proceed for construction was issued to TCI on June 14, 2010.

The construction is substantially complete and final punchlist work is ongoing.

Initial on site IT commissioning of equipment and training of ARCC staff was completed. The ARCC went operational on December 15, 2010.

Budget Status

This project is tracking on budget.

Schedule Status

This project was substantially completed and the ARCC began live operations on December 15, 2010.

UTILITIES & INFRASTRUCTURE ELEMENT - Airport Response Coordination Center (ARCC) (U009A) - Continued

Issues

As staff begins use of the ARCC, they have identified additional changes and adjustments to the programming on operations of the ARCC systems which are being accommodated by IT's Consultants. Additionally, problems with existing backup power systems at the Admin West Data Center require major electrical equipment replacement for full IT system redundancy.

LANDSIDE ELEMENT - AOA Perimeter Fence (World Way West) Phase 3 (L003A)

Project Description

This project will enhance approximately 2.2 miles of fence from Taxiway AA to Coast Guard Road of LAX and will be constructed in the same manner as Phases 1 and 2. This project also provides security lighting and electrical duct banks along portions of World Way West from Taxiway AA to Coast Guard Road.

Planning and Programming Status

Project Definition is complete.

Design Progress

Design is 100% complete.

Construction Progress

Construction contract awarded to Griffith Company December 8, 2008.

Notice to Proceed issued January 22, 2009.

Construction is 100% complete with final punch list items currently being addressed.

Budget Status

This project is anticipated to complete on or under budget.

Schedule Status

Installation of crash/pedestrian gates and the Access Control Alarm Monitoring System (ACAMS) are complete. Contractor is nearing completion of the punch list.

Issues

Liquidated damages have been assessed due to security gates not being installed prior to contract completion date. The contractor, Griffith Company, submitted Time Impact Analysis (TIA) #3 early in December 2010 which is currently being reviewed. Final Change Orders are being negotiated.

LANDSIDE ELEMENT - Theme Building Restoration (L005A)

Project Description

This project provides for the reconstruction of the upper and lower arches to restore the appearance and provide weather protection. The entire structure will be seismically retrofitted using FEMA 356/ASCE 41 as the design guideline to a Collapse Prevention level. This will be accomplished using a Tuned Mass Damper on top of the elevator core and bolting and lap splices for confinement at the basement, ground floor and plaza levels.

Planning and Programming Status

Project Definition is complete.

Design Progress

Design is 100% complete.

Construction Progress

Construction contract awarded to Tower General Construction Group on July 7, 2008.

Notice to Proceed issued August 18, 2008.

Notice of Substantial Completion June 30, 2010.

Project is complete.

Budget Status

Phase I: Emergency Abatement for Upper Arch completed within budget.

Phase II: The Theme Building Restoration is tracking to the budget.

Schedule Status

As of October 31, 2010, this project is complete.

Issues

The negotiated excusable non-compensable time extension was approved and executed under Change Order No. 14. In addition to the time extension, LAWA received a \$96,000.00 credit from Tower General Contractors.

RESIDENTIAL/SOUNDPROOFING ELEMENT - Aircraft & Noise Monitoring & Management System (ANMMS)-LAX (S004A)

Project Description

LAWA installed a state of the art Aircraft and Noise Monitoring and Management System (ANMMS) in 1990. The monitors measure noise 24 hours a day, 365 days a year. ANMMS measures airport generated noise in the community, tracks and identifies aircraft within a certain radius of the airport, and is used to help LAWA produce maps showing the noise impact area, as required by the State of California. LAWA continually monitors its ANMMS to ensure the accuracy of noise data and related operations information, and to improve the access to and utilization of the various types of available data.

Planning and Programming Status

Project Definition is complete.

Design Progress

Design is 100% complete.

Construction Progress

Construction contract awarded to Lochard Corporation on October 4, 2004.

Budget Status

This project is anticipated to complete on budget.

Schedule Status

The system has been accepted and punch list activities are ongoing.

Issues

None.

RESIDENTIAL/SOUNDPROOFING ELEMENT - Noise Mitigation/Soundproofing (City of LA) (S002A)

Project Description

This project will provide soundproofing of approximately 9,400 eligible dwelling units making them land use compatible.

Planning and Programming Status

Not applicable.

Design Progress

Selection pending for acoustic design architect for remaining units.

Construction Progress

Various Construction Contracts ongoing.

This component of the Noise Mitigation / Soundproofing Program is 88% complete.

Budget Status

This project is trending to complete on budget.

Schedule Status

This project is on track to be completed in 2012.

Issues

TERMINAL ELEMENT - Elevators and Escalators Replacement (T001A)

Project Description

This project will upgrade / replace all aging elevators, escalators and moving walkways at LAX, which have exceeded their useful life expectancy. These units will be upgraded/replaced in staggered Priority Groups.

Planning and Programming Status

Project Definition is complete.

Design Progress

Priority I Procurement - Design is 100% complete.
Priority I Site Mods - Design is 100% complete.
Priority II-IV Procurement - Design is 100% complete.
Priority II-IV Site Mods - Design is 100% complete.
Priority II-IV GC MRL Elevators - Design is 47% complete.

Construction Progress

Priority I Procurement - Contract awarded to Kone, Inc. on May 18, 2009 - Procurement is 100% complete.
Priority I Site Mods - Construction contract awarded to W.E. O'Neil Construction Company on August 17, 2009 - Construction is 58% complete.
Priority II - Procurement - NTP issued to Schindler Elevator Corporation on April 19, 2010. Fabrication has begun.
Priority II-IV Site Mods - Bid window opened on December 21, 2010.
Priority III-IV GC MRL Elevators - No construction contracts awarded.

Budget Status

Each active project remains on track to finish within the respective project budget.

Schedule Status

The Priority 1 Units are currently running seventy-two working days behind schedule due to design deficiencies, incomplete as-built drawings, or a combination of both. Resequencing future work is anticipated to recover time to meet current milestones.

Issues

As part of their respective renovation projects Delta will replace five units in Terminal 5, and Alaska will perform all of the site modifications to allow LAWA's vendor to install the new units in Terminal 6.

TBIT RENOVATION ELEMENT - TBIT Interior Improvements and Baggage Screening Facilities (B001A)

Project Description

This project will renovate the interior public spaces (including the departure lobby; departure concourses; arrival concourses; bus hold room; meeter-greeter area; in-transit lounge; in-bound and outbound baggage system; upgrade the building's paging system, all IT Systems and upgrade the existing elevators, escalators, and moving walks) and construct the North New Large Aircraft Gates. The outbound baggage system will be pursuant to the requirements of the TSA and will include new "matrix" buildings to house the security screening equipment and TSA personnel.

Planning and Programming Status

Project Definition is complete.

Design Progress

Design is 100% complete.

Construction Progress

Construction contract awarded to Clark/McCarthy Joint Venture September 8, 2006.
Construction was substantially complete on February 7, 2010.
The contract is in close-out phase.

Budget Status

This project completed under budget.

Schedule Status

The closeout phase is underway.

Issues

TBIT RENOVATION ELEMENT - Passenger Boarding Bridges (PBB) Replacements & Extensions (B002A)

Project Description

This project will deliver and install 26 new passenger boarding bridges (PBBs) at LAX, 19 at Tom Bradley International Terminal, 4 at West Remote Boarding Facilities and 3 at Terminal 3. This project also constructs 6 extension PBBs at Ontario Terminals 2 and 4.

Planning and Programming Status

Project Definition is complete.

Design Progress

Design is 100% complete.

Construction Progress

This project is complete.

Budget Status

This project completed under budget.

Schedule Status

This project is completed.

Issues

WORK IN PROGRESS OVERVIEW

User's Guide - Work in Progress

This section lists the projects that are in various stages of pre-development. Typically, these projects represent efforts for which LAWA has committed funding for the design; not the construction. A project in this category will experience variability as the design is refined, until it is deemed operationally and economically viable and moved into an execution element.

WORK IN PROGRESS - Interim Taxiway Safety Improvement Project (ITSIP) (A006B)

Project Description

The Interim Taxiway Safety Improvement Project (ITSIP) relocates three high-speed exit taxiways between the North Airfield Runways. The relocated taxiways reduce the likelihood and severity of potential runway incursions without significant impacts to runway occupancy and operational efficiency. The construction elements include demolition of existing features, decommissioning of existing taxiways, construction of new taxiways involving concrete and asphalt pavement, pavement striping and marking, airfield lighting modifications and modifications to navigational equipment.

Issues

The design was awarded to Post, Buckley, Schuh & Jernigan, Inc. (PBS&J) in September 2010. The scoping and cost validation work is underway.

PROGRAM MASTER SCHEDULE OVERVIEW

User's Guide - Schedule

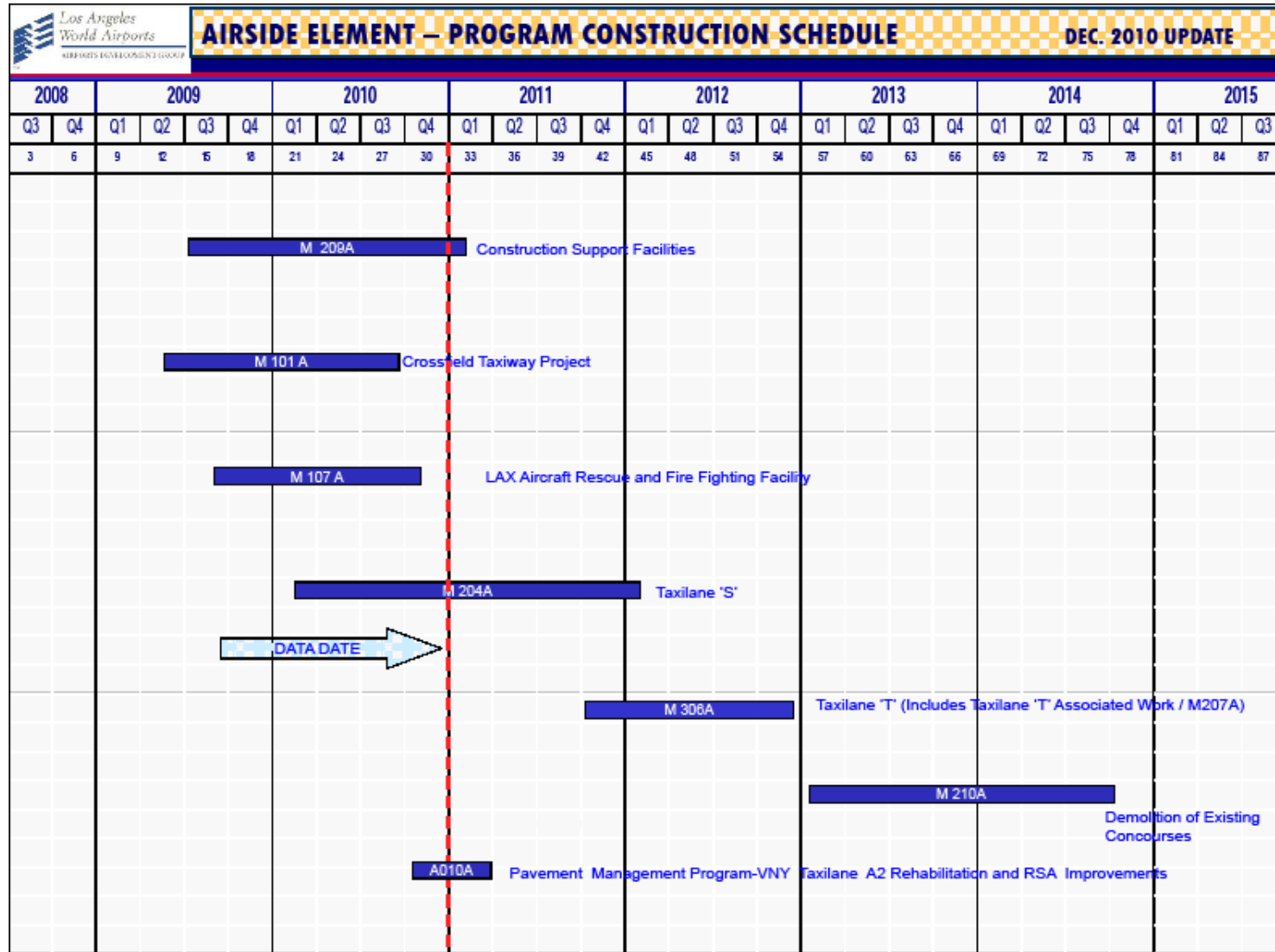
The information provided herein is designed to furnish users of the Airport Development Group (ADG) Program Construction Schedule Report with greater knowledge and a better understanding of the composition of the various components of the schedule report.

Data Date - Is a vertical line showing the current date of the report. Dates to the left side of the data date are known. Dates to the right side of the data date are projected.

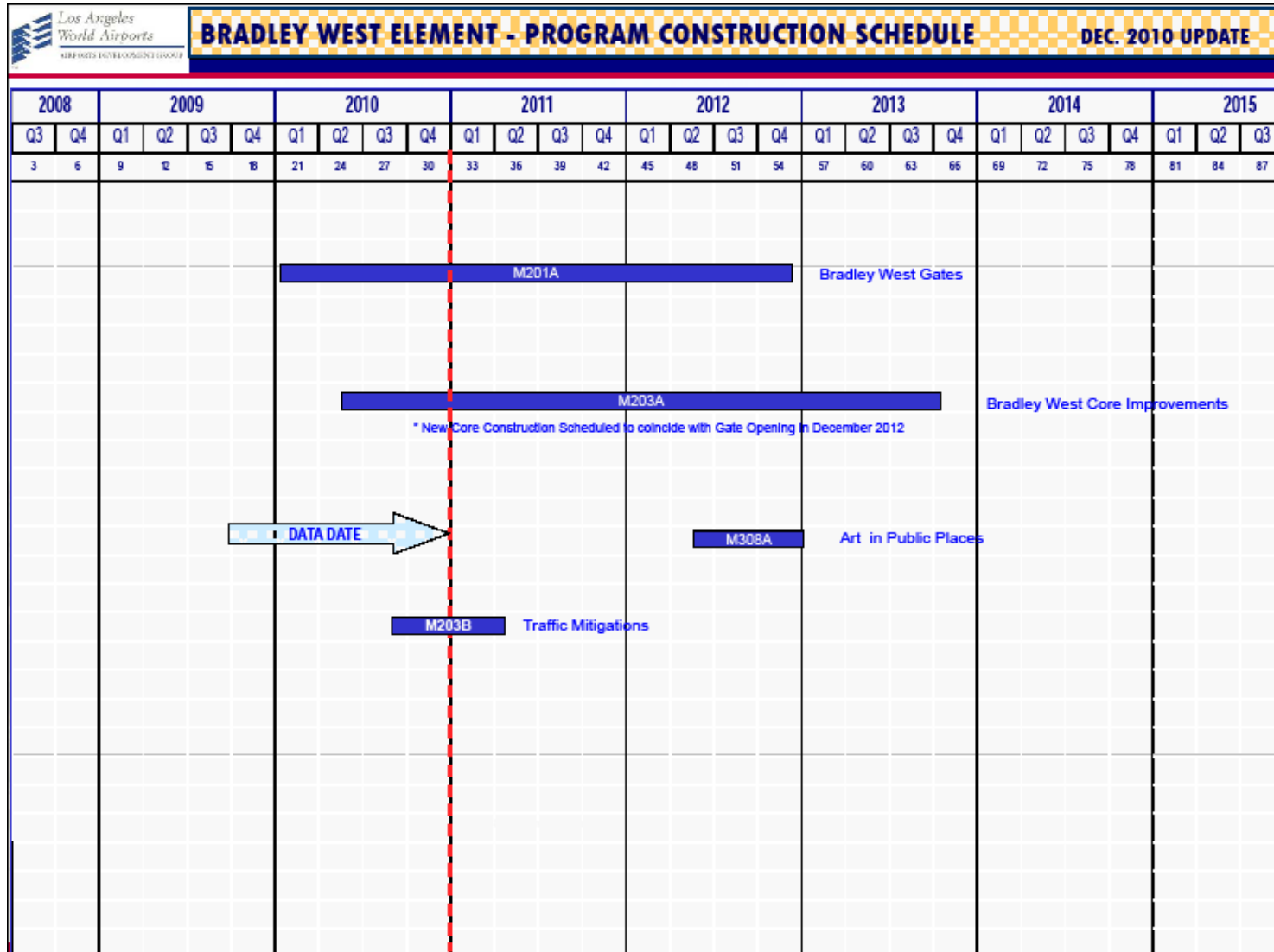
Project Schedule Bar - Is the blue bar which represents the construction phase for each project; with the exception of the Residential / Soundproofing projects which contains planning, design and construction phases.

Project Number - Is a unique identifier for each project that enables the reader to easily correlate scope, schedule and budget.

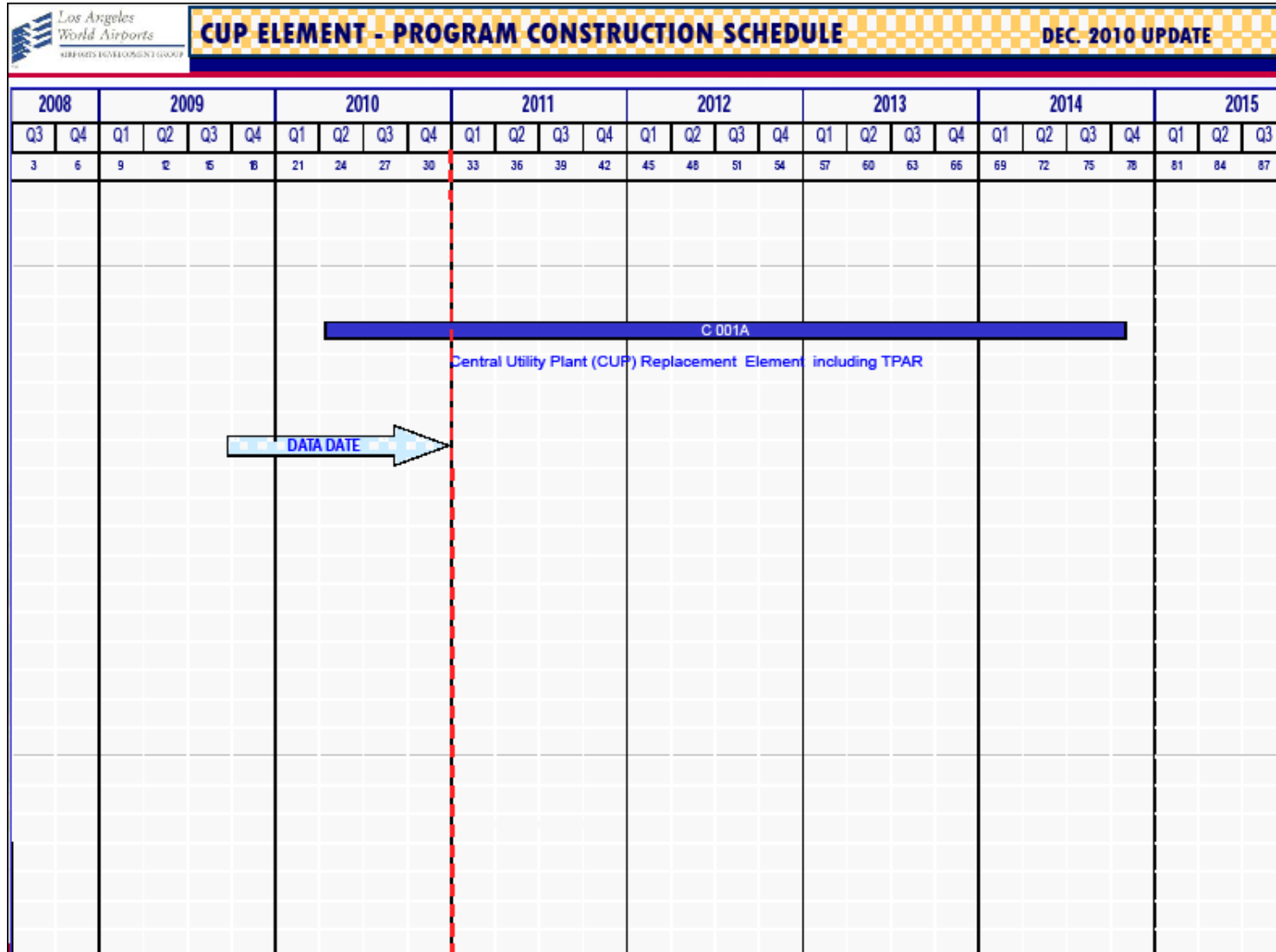
PROGRAM MASTER SCHEDULE - Continued




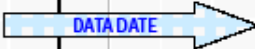
PROGRAM MASTER SCHEDULE - Continued



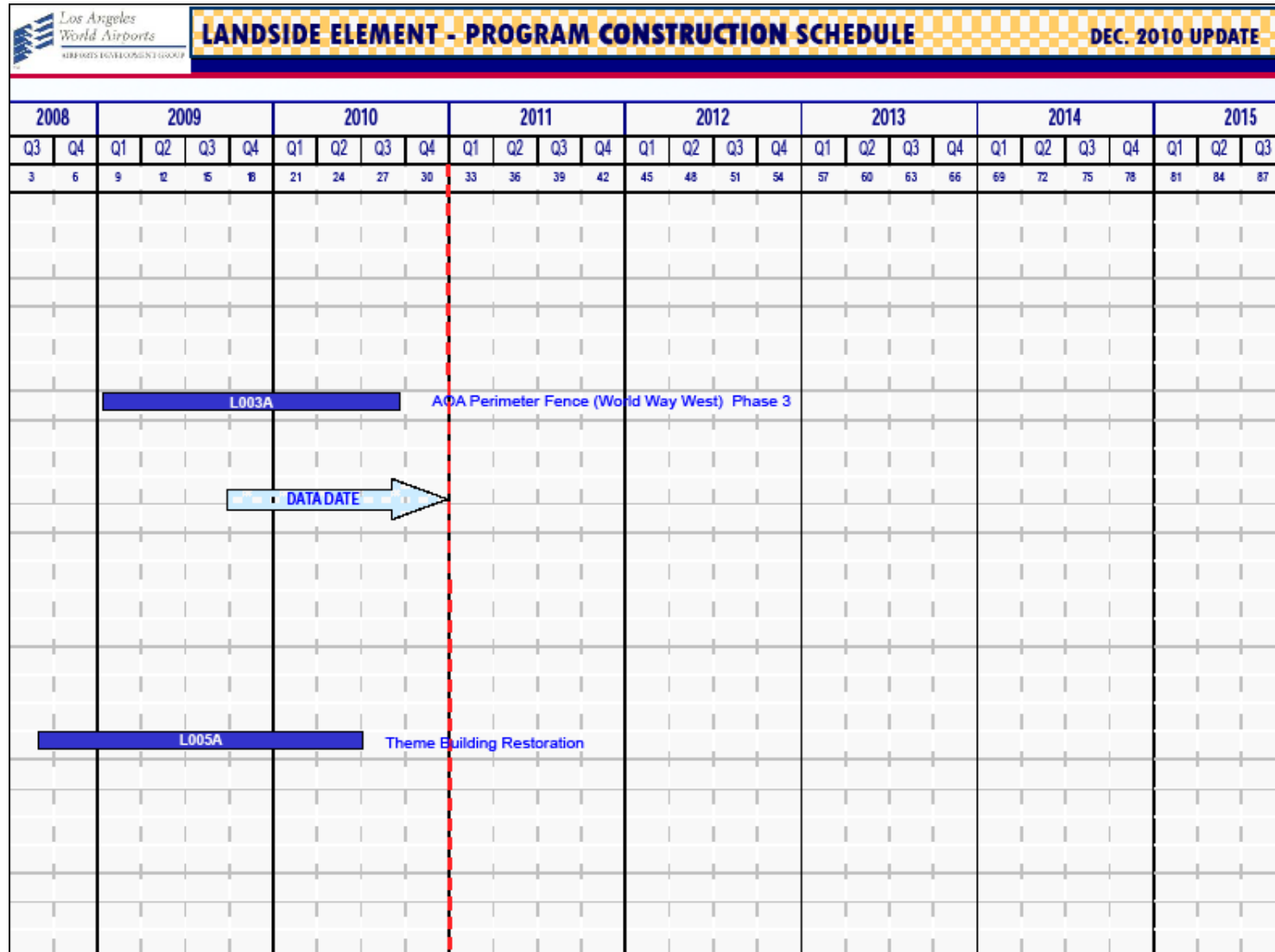
PROGRAM MASTER SCHEDULE - Continued




PROGRAM MASTER SCHEDULE - Continued

 UTILITIES & INFRASTRUCTURES ELEMENT - PROGRAM CONST. SCHEDULE DEC. 2010 UPDATE																													
2008			2009				2010				2011				2012				2013				2014				2015		
Q3	Q4		Q1	Q2	Q3	Q4	Q1	Q2	Q3	Q4	Q1	Q2	Q3	Q4	Q1	Q2	Q3	Q4	Q1	Q2	Q3	Q4	Q1	Q2	Q3	Q4	Q1	Q2	Q3
3	6		9	12	15	18	21	24	27	30	33	36	39	42	45	48	51	54	57	60	63	66	69	72	75	78	81	84	87
<div style="position: relative; width: 100%; height: 100%;">  <div style="position: absolute; top: 50%; left: 20%; transform: translate(-50%, -50%);"> <p>U009A Airport Response Coordination Center (ARCC)</p> </div> </div>																													

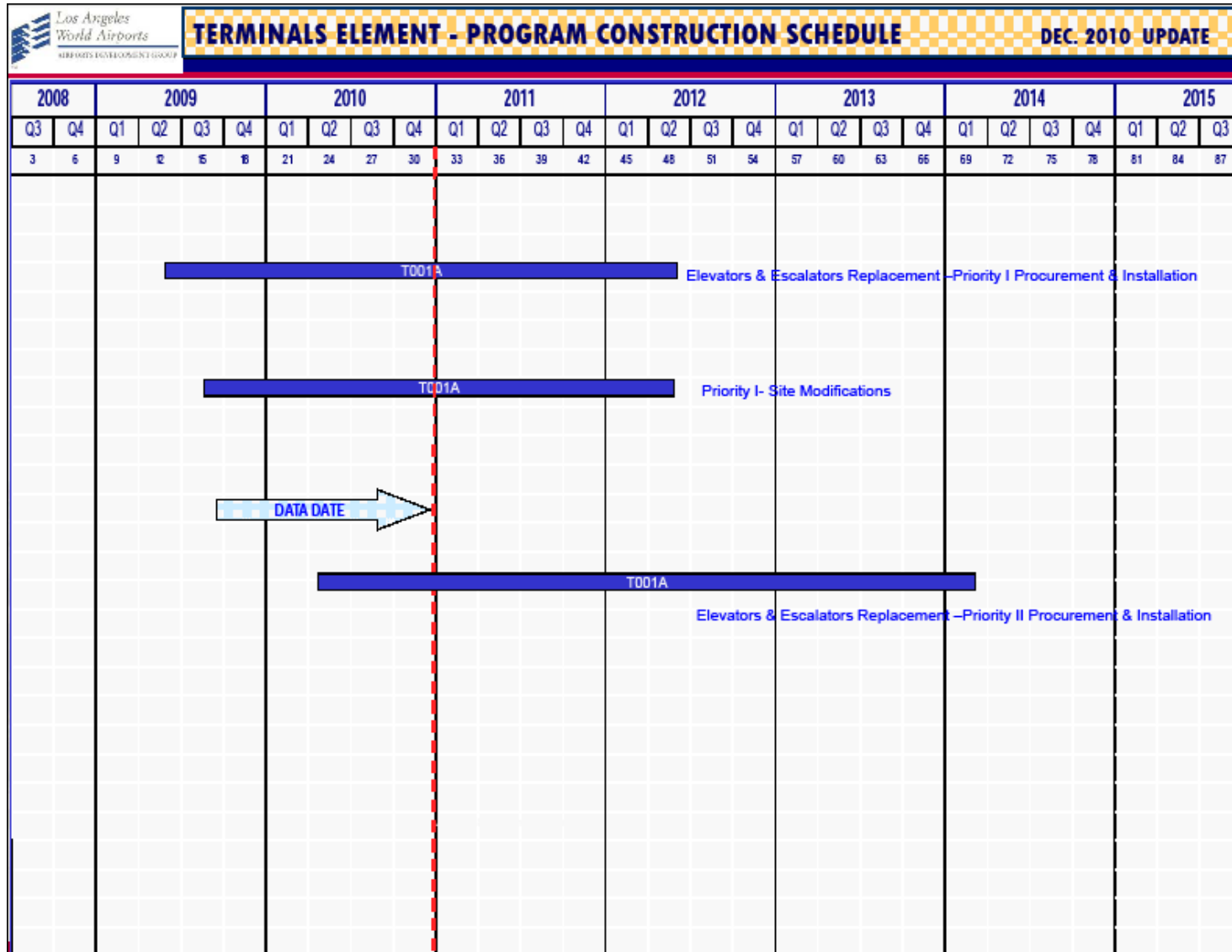
PROGRAM MASTER SCHEDULE - Continued



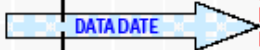
PROGRAM MASTER SCHEDULE - Continued

2008		2009				2010				2011				2012				2013				2014				2015		
Q3	Q4	Q1	Q2	Q3	Q4	Q1	Q2	Q3	Q4	Q1	Q2	Q3	Q4	Q1	Q2	Q3	Q4	Q1	Q2	Q3	Q4	Q1	Q2	Q3	Q4	Q1	Q2	Q3
3	6	9	12	15	18	21	24	27	30	33	36	39	42	45	48	51	54	57	60	63	66	69	72	75	78	81	84	87
S002A										Noise Mitigation / Soundproofing (City of LA)																		
S004A										Aircraft & Noise Monitoring Management System (ANMMS) - LAX																		
																												

PROGRAM MASTER SCHEDULE - Continued



PROGRAM MASTER SCHEDULE - Continued

Los Angeles World Airports AIRPORTS DEVELOPMENT GROUP		TBIT RENOVATION ELEMENT - PROGRAM CONSTRUCTION SCHEDULE																												DEC. 2010 UPDATE			
2008		2009				2010				2011				2012				2013				2014				2015							
Q3	Q4	Q1	Q2	Q3	Q4	Q1	Q2	Q3	Q4	Q1	Q2	Q3	Q4	Q1	Q2	Q3	Q4	Q1	Q2	Q3	Q4	Q1	Q2	Q3	Q4	Q1	Q2	Q3					
3	6	9	12	15	18	21	24	27	30	33	36	39	42	45	48	51	54	57	60	63	66	69	72	75	78	81	84	87					
		B001A				TBIT Interior Improvements and Baggage Screening Facilities																											
																																	

User's Guide - Budget Reports

The information provided herein is designed to furnish users of the Airport Development Group (ADG) Budget Reports with greater knowledge and a better understanding of the composition of the various components of the budget report.

Baseline Budget - Is the estimated cost of the project as it was reported in the November 2009 report with the exception of the Crossfield Taxiway project which is from the February 2009 Operating Statement (OS) budget report.

Current Budget - Is the estimated cost of the project as it was planned plus or minus any processed revisions.

Committed to Date - Is the total contractual obligation to date for the project, e.g. awarded design contracts, awarded construction contracts, authorized task orders, etc.

Incurred to Date - Is the total of invoices received to date for the project.

Estimate at Completion (EAC) - Is the latest estimate of the total cost of the project.

Variance - Is the difference between Budget minus Estimate at Completion (EAC).

Percent (%) Incurred - Calculated as Incurred to Date divided by Estimate at Completion, this column provides a financial-oriented progress indicator.

Percent (%) Contingency Used: Calculated as the change in Contingency divided by Original Contingency, this column provides an indicator for project contingency-usage.

PROGRAM COST SUMMARY REPORT

as of 11/30/2010

(dollars in thousands)								
Description	Baseline Budget	Current Budget	Committed to Date	Incurred to Date	Estimate at Completion	Variance (Budget-EAC)	% Incurred	% Cont Used
Airside Element	650,660	647,859	327,131	207,669	610,170	37,688	34%	47%
Bradley West Element	1,545,020	1,547,803	952,019	284,863	1,431,615	116,189	20%	0%
CUP Replacement Element	438,085	438,085	51,023	44,570	382,585	55,500	12%	0%
Utilities & Infrastructure Element	8,175	13,914	12,404	7,410	13,711	203	54%	60%
Landside Element	28,685	28,685	27,174	25,170	26,648	2,037	94%	31%
Residential/Soundproofing Element	183,233	163,233	150,206	143,017	163,233	0	88%	0%
Terminal Element	270,000	270,000	96,366	38,656	205,787	64,213	19%	8%
TBIT Renovation Element	755,343	755,343	737,914	735,043	738,396	16,946	100%	89%
Subtotal	3,879,201	3,864,922	2,354,237	1,486,398	3,572,145	292,776	42%	29%
Unallocated Contingency	N/A	270,317	0	0	N/A	N/A	N/A	N/A
Subtotal	4,078,781	4,135,239	2,354,237	1,486,398	N/A	N/A	N/A	N/A
Work in Progress	N/A	6,754	6,754	850	N/A	N/A	N/A	N/A
Program Total	N/A	4,141,993	2,360,991	1,487,248	N/A	N/A	N/A	N/A

Notes:

1. The current budget and estimate at completion excludes escalation

AIRSIDE ELEMENT BUDGET REPORT as of 11/30/2010

(dollars in thousands)									
Project #	Description	Baseline Budget	Current Budget	Committed to Date	Incurred to Date	Estimate at Completion	Variance (Budget-EAC)	% Incurred	% Cont Used
M209A	Construction Support Facilities	14,790	8,425	7,054	5,541	7,799	626	71%	34%
M101A	Crossfield Taxiway Project	177,760	145,678	137,705	129,888	141,136	4,542	92%	89%
M107A	LAX Aircraft Rescue and Fire Fighting Facility	14,190	14,190	12,591	11,684	13,040	1,150	90%	31%
M205A	Bradley West - Aprons	111,870	111,870	27,214	13,086	102,820	9,050	13%	1%
M204A	Taxilane 'S'	174,980	150,918	129,873	40,577	151,803	(886)	27%	36%
M306A	Taxilane 'T'	96,500	156,208	6,388	4,779	144,898	11,310	3%	0%
M210A	Demolition of Existing Concourses	52,600	52,600	1,765	1,524	43,604	8,996	3%	0%
A010A	Pavement Management Program - VNY Taxilane A2 Rehabilitation and RSA Improvements	7,970	7,970	4,541	590	5,070	2,900	12%	0%
Airside Element Total		650,660	647,859	327,131	207,669	610,170	37,688	34%	47%

Notes:

1. The current budget and estimate at completion excludes escalation

BRADLEY WEST ELEMENT BUDGET REPORT

as of 11/30/2010

(dollars in thousands)									
Project #	Description	Baseline Budget	Current Budget	Committed to Date	Incurred to Date	Estimate at Completion	Variance (Budget-EAC)	% Incurred	% Cont Used
M201A	Bradley West Gates	742,954	744,879	542,786	185,208	709,980	34,899	26%	0%
M203A	Bradley West Core Improvements	793,164	795,089	401,890	98,949	714,023	81,066	14%	0%
M203B	Construction Traffic Mitigations	3,542	2,475	1,983	706	2,252	224	31%	0%
M308A	Art In Public Places	5,360	5,360	5,360	0	5,360	0	0%	0%
Bradley West Element Total		1,545,020	1,547,803	952,019	284,863	1,431,615	116,189	20%	0%

Notes:

1. The current budget and estimate at completion excludes escalation

CUP REPLACEMENT ELEMENT BUDGET REPORT

as of 11/30/2010

(dollars in thousands)									
Project #	Description	Baseline Budget	Current Budget	Committed to Date	Incurred to Date	Estimate at Completion	Variance (Budget-EAC)	% Incurred	% Cont Used
C001A	Central Utility Plant	438,085	438,085	51,023	44,570	382,585	55,500	12%	0%
CUP Replacement Element Total		438,085	438,085	51,023	44,570	382,585	55,500	12%	0%

Notes:

1. The current budget and estimate at completion excludes escalation

UTILITIES & INFRASTRUCTURE ELEMENT BUDGET REPORT

as of 11/30/2010

(dollars in thousands)									
Project #	Description	Baseline Budget	Current Budget	Committed to Date	Incurred to Date	Estimate at Completion	Variance (Budget-EAC)	% Incurred	% Cont Used
U009A	Airport Response Coordination Center (ARCC)	8,175	13,914	12,404	7,410	13,711	203	54%	60%
Utilities & Infrastructure Element Total		8,175	13,914	12,404	7,410	13,711	203	54%	60%

Notes:

1. The current budget and estimate at completion excludes escalation

LANDSIDE ELEMENT BUDGET REPORT

as of 11/30/2010

(dollars in thousands)									
Project #	Description	Baseline Budget	Current Budget	Committed to Date	Incurred to Date	Estimate at Completion	Variance (Budget-EAC)	% Incurred	% Cont Used
L003A	AOA Perimeter Fence (World Way West) Phase 3	17,162	17,162	15,651	14,326	15,221	1,941	94%	31%
L005A	Theme Building Restoration	11,523	11,523	11,523	10,844	11,427	96	95%	100%
Landside Element Total		28,685	28,685	27,174	25,170	26,648	2,037	94%	31%

Notes:

1. The current budget and estimate at completion excludes escalation

RESIDENTIAL/SOUNDPROOFING ELEMENT BUDGET REPORT

as of 11/30/2010

(dollars in thousands)									
Project #	Description	Baseline Budget	Current Budget	Committed to Date	Incurred to Date	Estimate at Completion	Variance (Budget-EAC)	% Incurred	% Cont Used
S004A	Aircraft & Noise Monitoring & Management System (ANMMS)-LAX	3,233	3,233	3,233	2,993	3,233	0	93%	0%
S002A	Noise Mitigation/Soundproofing (City of LA)	180,000	160,000	146,973	140,024	160,000	0	88%	0%
Residential/Soundproofing Element Total		183,233	163,233	150,206	143,017	163,233	0	88%	0%

Notes:

1. The current budget and estimate at completion excludes escalation

TERMINAL ELEMENT BUDGET REPORT

as of 11/30/2010

(dollars in thousands)									
Project #	Description	Baseline Budget	Current Budget	Committed to Date	Incurred to Date	Estimate at Completion	Variance (Budget-EAC)	% Incurred	% Cont Used
T001A	Elevators and Escalators Replacement	270,000	270,000	96,366	38,656	205,787	64,213	19%	8%
Terminal Element Total		270,000	270,000	96,366	38,656	205,787	64,213	19%	8%

Notes:

1. The current budget and estimate at completion excludes escalation

TBIT RENOVATION ELEMENT BUDGET REPORT

as of 11/30/2010

(dollars in thousands)									
Project #	Description	Baseline Budget	Current Budget	Committed to Date	Incurred to Date	Estimate at Completion	Variance (Budget-EAC)	% Incurred	% Cont Used
B001A	TBIT Interior Improvements and Baggage Screening Facilities	750,174	750,174	733,470	730,933	733,952	16,221	100%	89%
B002A	Passenger Boarding Bridges (PBB) Replacements & Extensions	5,169	5,169	4,444	4,110	4,444	725	92%	0%
TBIT Renovation Element Total		755,343	755,343	737,914	735,043	738,396	16,946	100%	89%

Notes:

1. The current budget and estimate at completion excludes escalation
2. These Passenger Boarding Bridges (PBBs) are outside of TBIT

WORK IN PROGRESS BUDGET REPORT

as of 11/30/2010

(dollars in thousands)									
Project #	Description	Baseline Budget	Current Budget	Committed to Date	Incurred to Date	Estimate at Completion	Variance (Budget-EAC)	% Incurred	% Cont Used
A006B	Interim Taxiway Safety Improvement Project (ITSIP)	N/A	6,754	6,754	850	N/A	N/A	N/A	N/A
Work in Progress Element Total		N/A	6,754	6,754	850	N/A	N/A	N/A	N/A

Notes:

1. The current budget and estimate at completion excludes escalation

PROGRAM CASH FLOW OVERVIEW

User's Guide - Cash Flow

The information provided herein is designed to furnish users of the Airport Development Group (ADG) Cash Flow Reports with greater knowledge and a better understanding of the cash flow report.

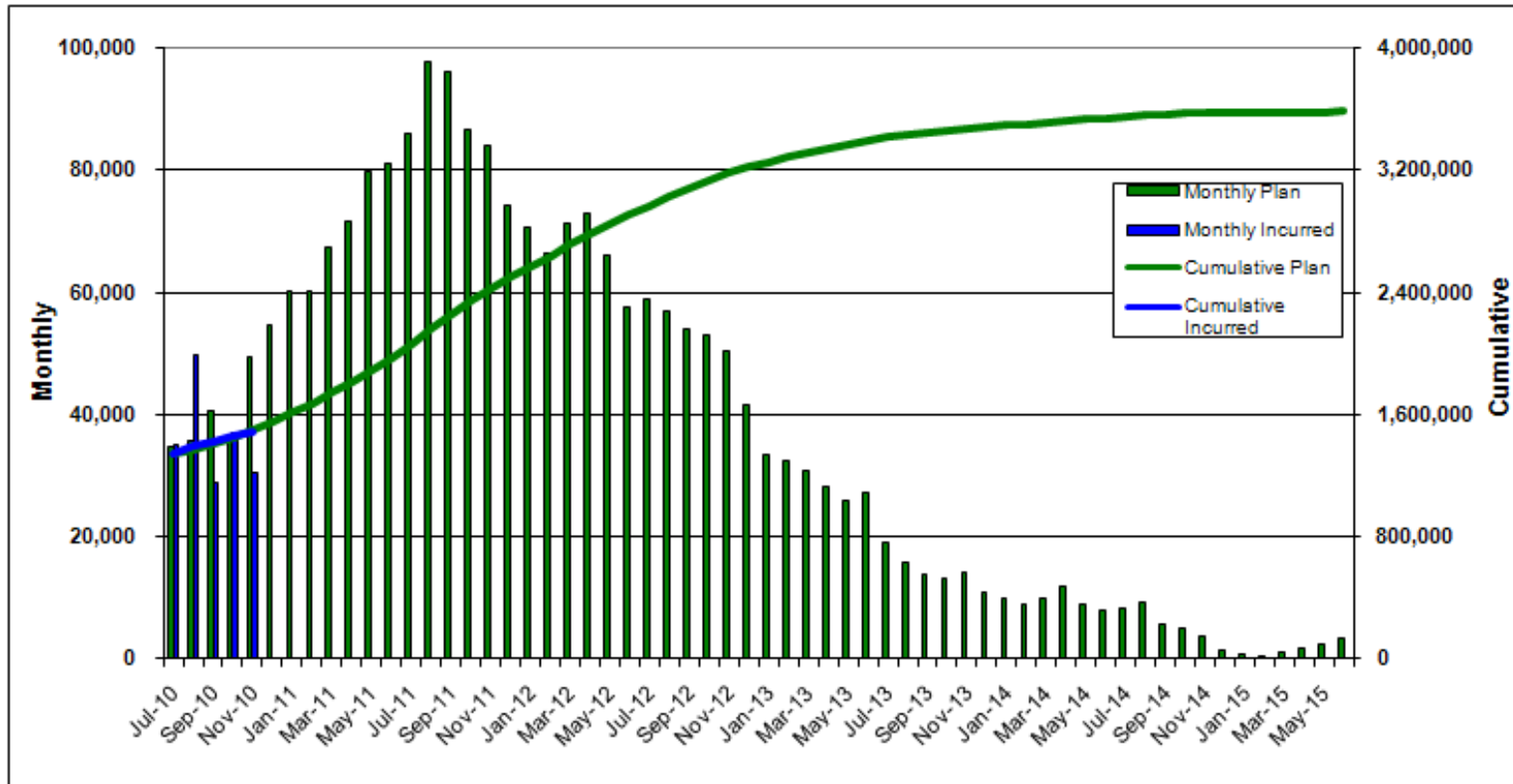
Monthly Plan - Is the estimated cost of the work anticipated for a given month.

Monthly Incurred - Is the cost of the work actually completed and invoiced for a given month.

Cumulative Plan - Represents the summation of the Monthly Plan amounts, to a given point in time, and provides the user with an overall forecast.

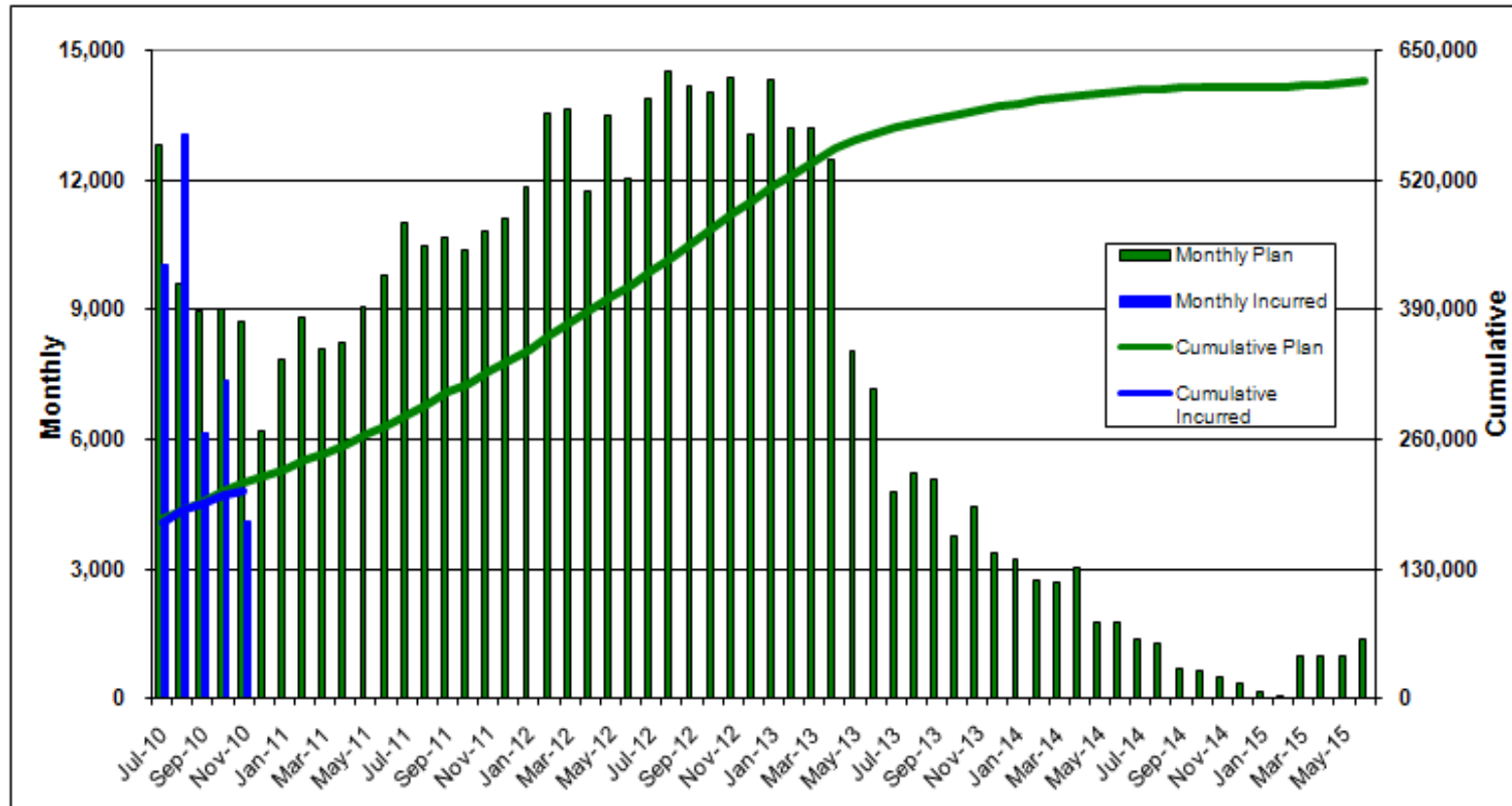
Cumulative Incurred - Represents the summation of the Monthly Incurred amounts, to a given point in time, and provides the user with the total amount invoiced.

PROGRAM CASH FLOW as of 11/30/2010



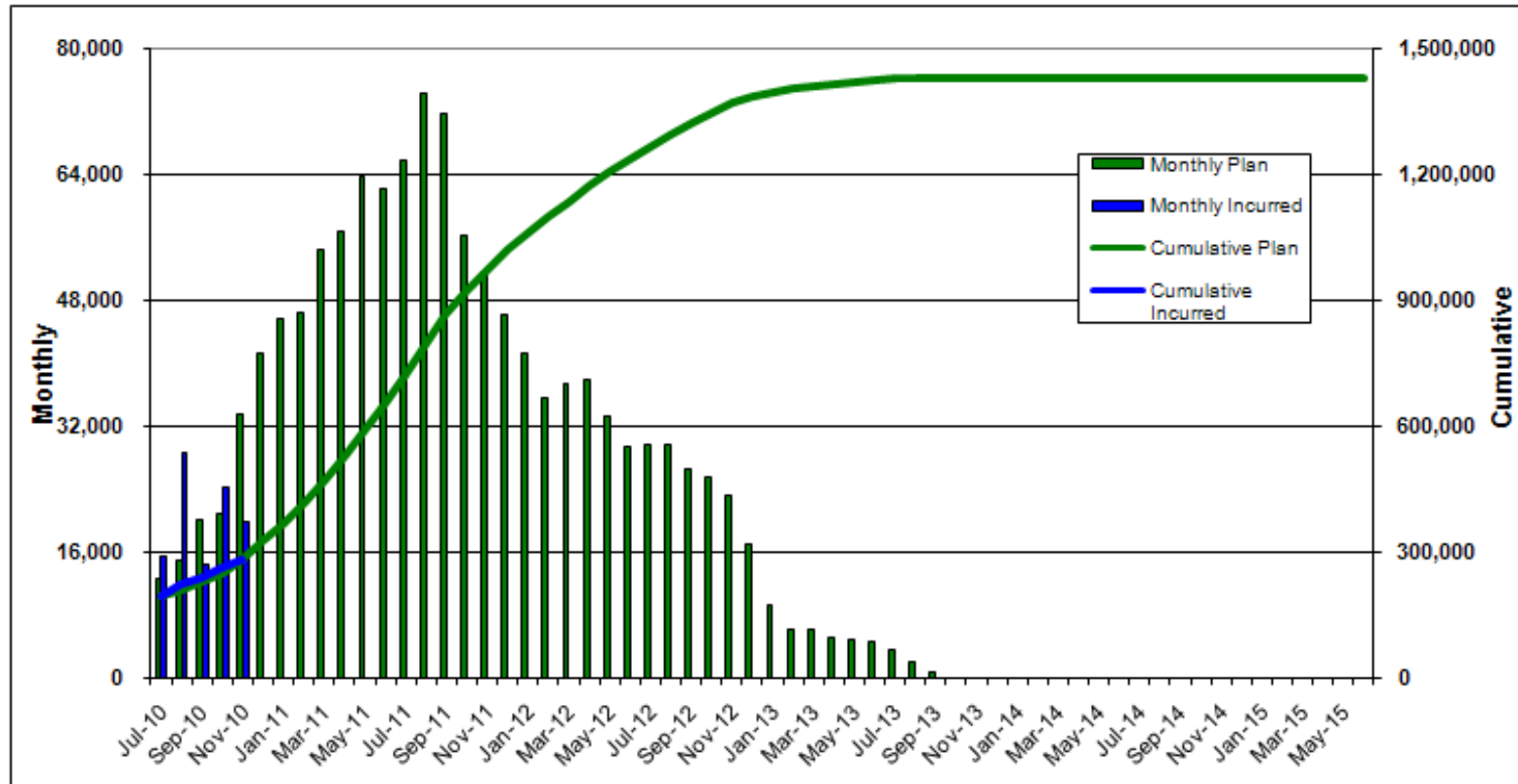
- Notes:
1. Unallocated Contingency is not included.
 2. Escalation is not included.

AIRSIDE ELEMENT CASH FLOW as of 11/30/2010



- Notes:
1. Unallocated Contingency is not included.
 2. Escalation is not included.

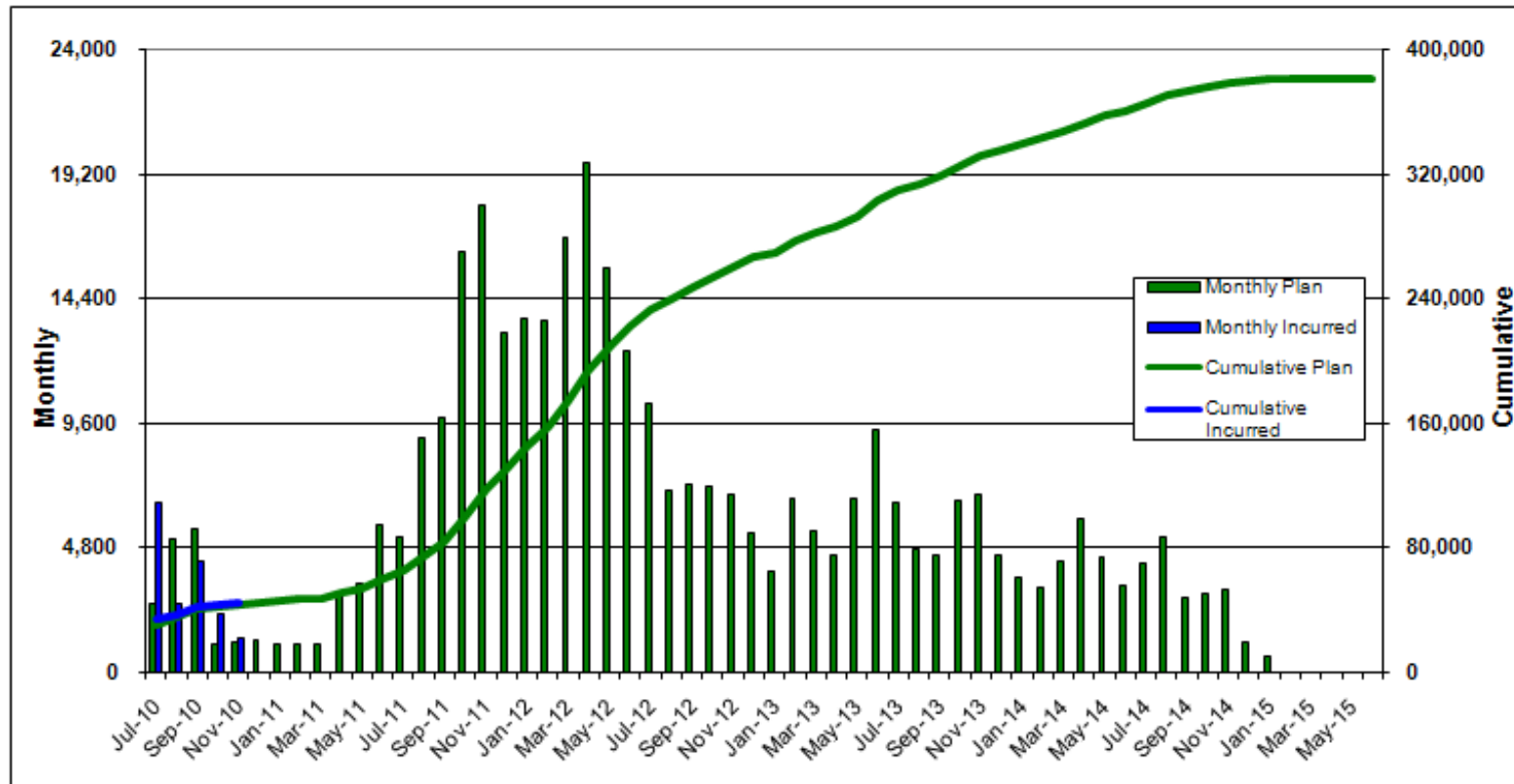
BRADLEY WEST ELEMENT CASH FLOW as of 11/30/2010



- Notes:
1. Unallocated Contingency is not included.
 2. Escalation is not included.

CUP REPLACEMENT CASH FLOW

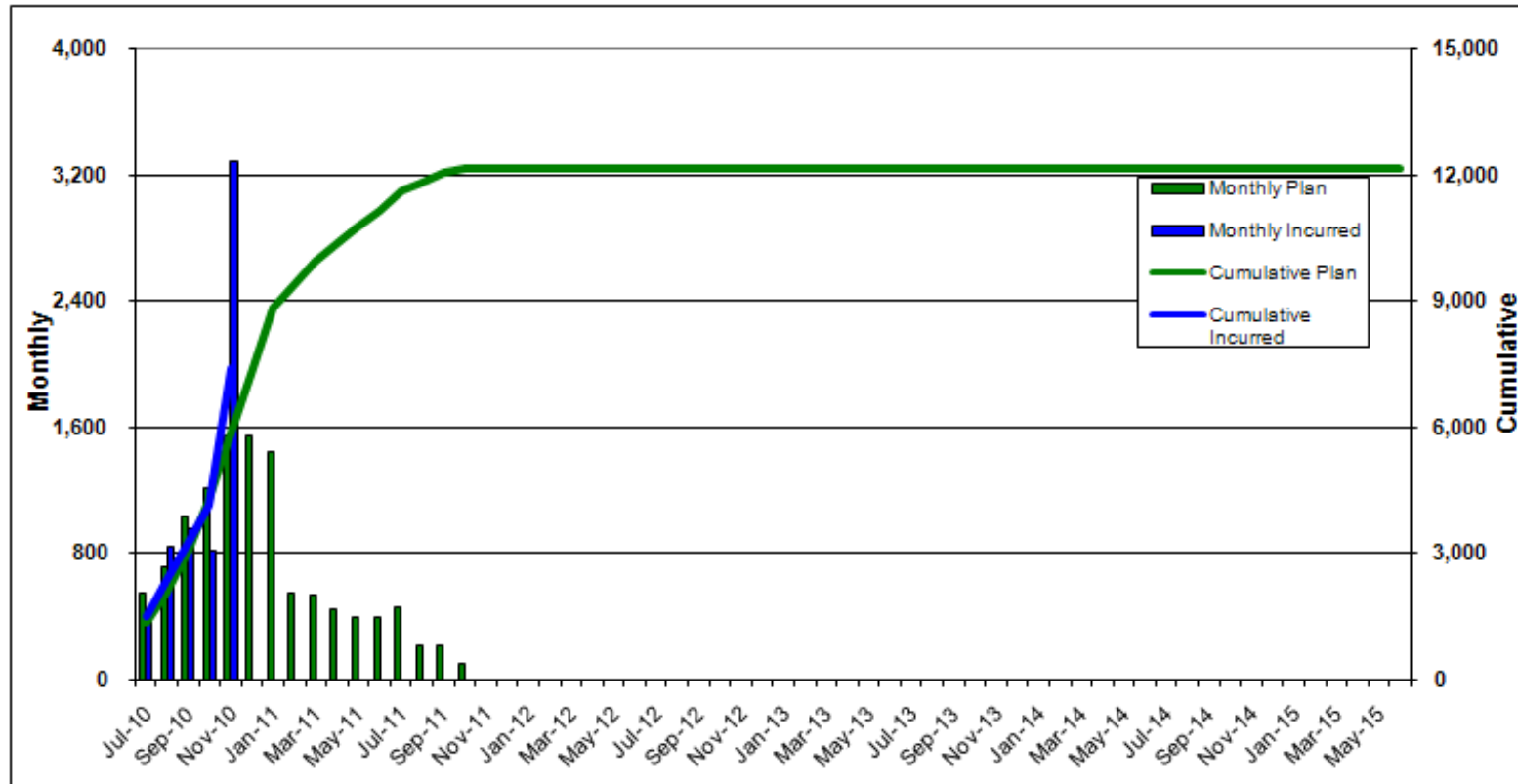
as of 11/30/2010



- Notes:
1. Unallocated Contingency is not included.
 2. Escalation is not included.

UTILITIES & INFRASTRUCTURE ELEMENT CASH FLOW

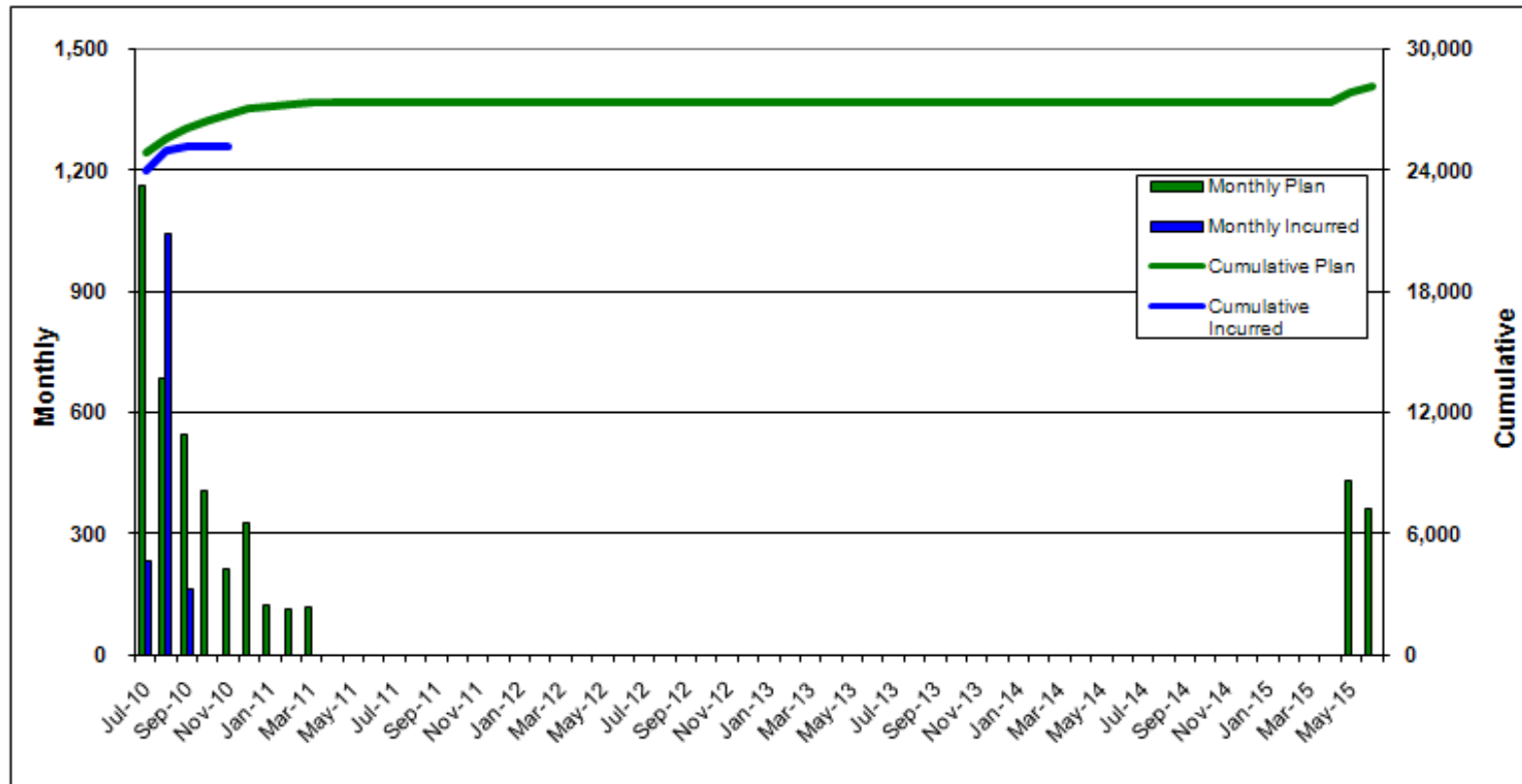
as of 11/30/2010



Notes:

1. Unallocated Contingency is not included.
2. Escalation is not included.

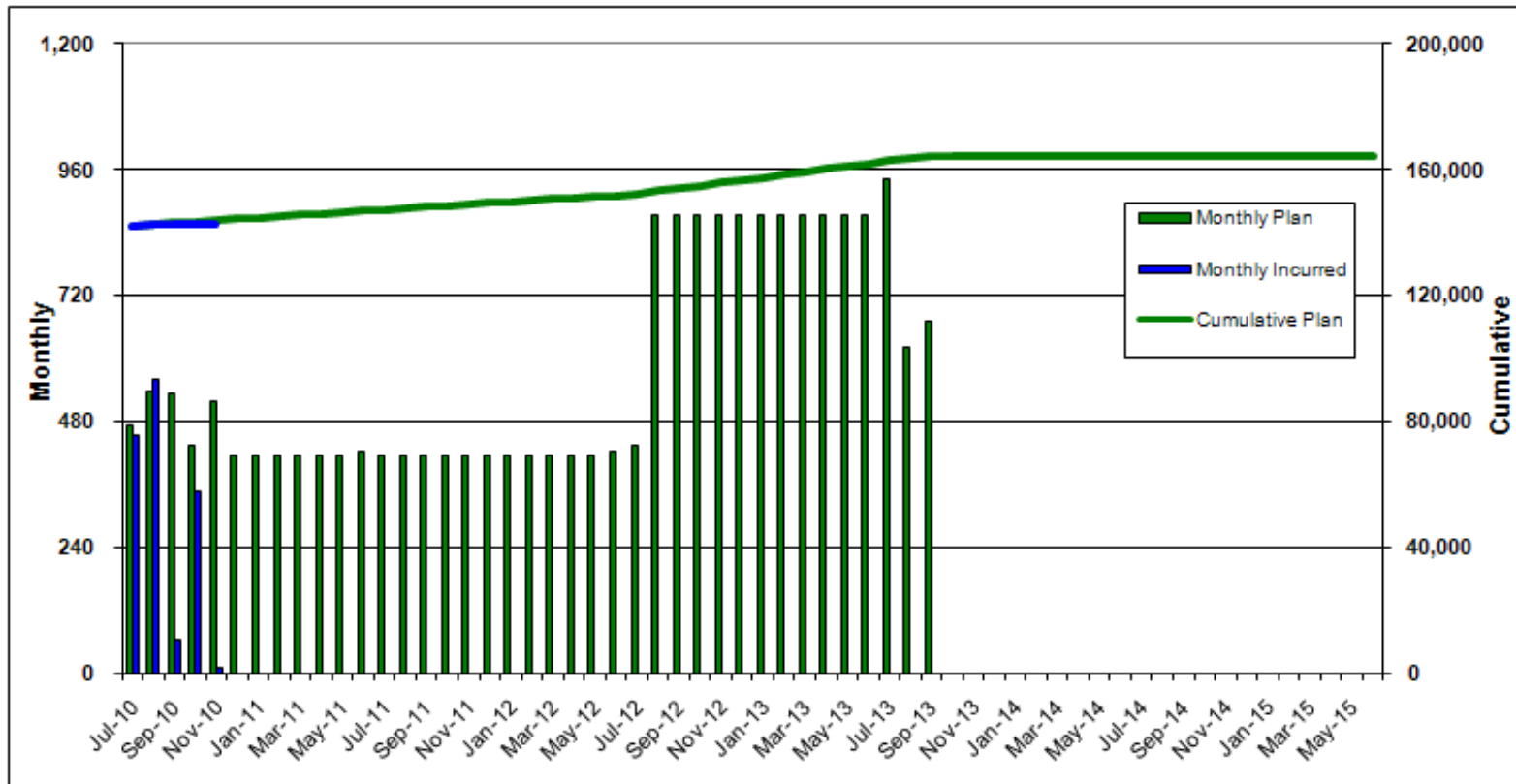
LANDSIDE ELEMENT CASH FLOW as of 11/30/2010



- Notes:
1. Unallocated Contingency is not included.
 2. Escalation is not included.

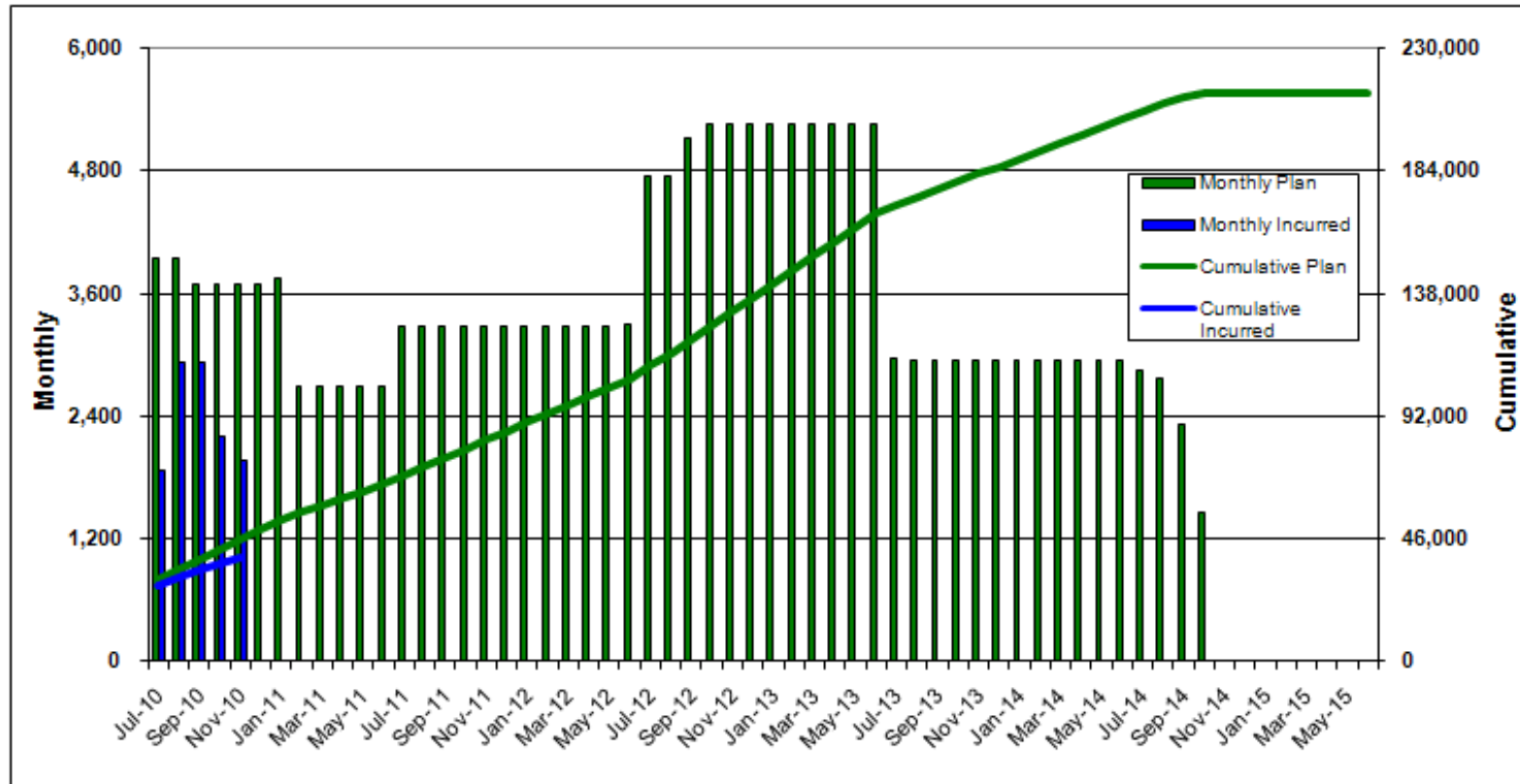
RESIDENTIAL/SOUNDPROOFING ELEMENT CASH FLOW

as of 11/30/2010



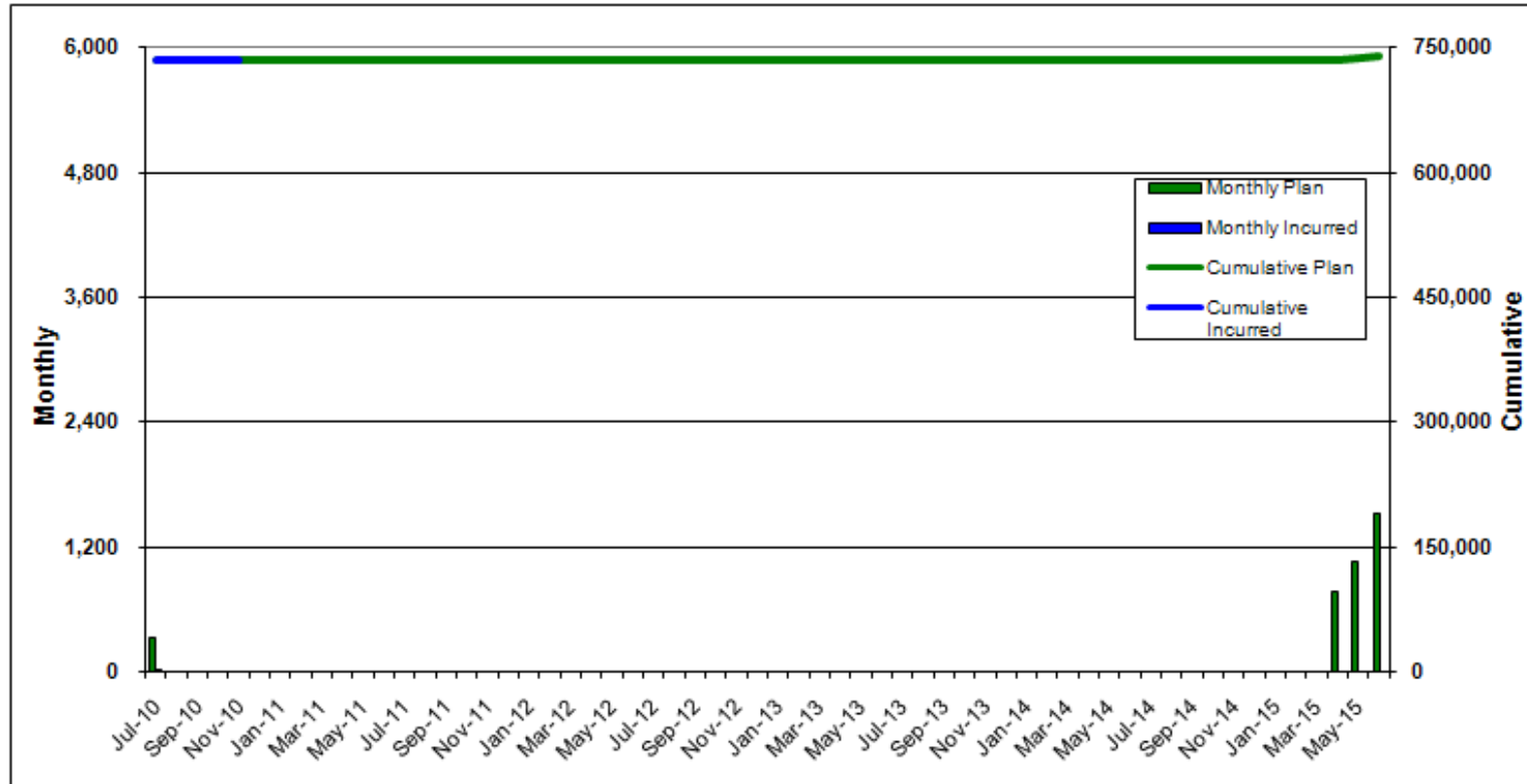
- Notes:
1. Unallocated Contingency is not included.
 2. Escalation is not included.

TERMINALS ELEMENT CASH FLOW as of 11/30/2010



- Notes:
1. Unallocated Contingency is not included.
 2. Escalation is not included.

TBIT RENOVATION ELEMENT CASH FLOW as of 11/30/2010



- Notes:
1. Unallocated Contingency is not included.
 2. Escalation is not included.

User's Guide - Change Order

The information provided herein is designed to furnish users of the Airport Development Group (ADG) Change Order Reports with greater knowledge and a better understanding of the composition of the various components of the change order report.

Change Orders - Process by which an adjustment is made to the total contract capacity.

CGMP Revision - Process by which the value of a CGMP is adjusted within the original total contract capacity. This process is employed by the Bradley West Element - Gates and Core projects in the administration of the Construction Management at Risk (CMAR) contracts.

CHANGE ORDERS as of 12/31/2010

Element	Project	Contract	Change Order No	< \$150K	\$150K - \$1Mil	> \$1Mil	Notes
Airside Element							
M101A - CROSSFIELD TAXIWAY PROJECT							
	DA-4331		0048	\$129,979			Pump Station Pipe Bracing Supports, Access for AOA Fence between CFTP and ARFF - T&M, American Airlines Deluge Line Revisions, Phase 2A Striping Installation - T&M
	DA-4331		0049	\$124,335			AOA Permanent Fence Detail Modification
M204A - TAXILANE 'S'							
	DA-4398		0008	\$100,000			Removals of Undocumented Utilities in Phase 4A, Removals of Undocumented Utilities in Phase 1B
	DA-4398		0009	\$100,000			Removals of Undocumented Utilities in Phase 5A, Removals of Undocumented Utilities in Package 2 Phase 1
	DA-4398		0010	\$100,000			Removals of Undocumented Utilities in Package 2 Phase 3, Removals of Undocumented Utilities in Package 2 Phase 2
	DA-4398		0011	\$89,581			Storm Drain Line 26 Arch Pipe Deletion, American Airlines Parking Lot Modifications, Temporary Generator Power for Guard Post 5, Electrical Duct Bank and Hand Hole Removals in Phase 4, Sky Chefs 8 Inch Fire Water Line Removals
	DA-4398		0012	\$100,000			Vehicle Checks for Guard Post 21

CHANGE ORDERS - Continued as of 12/31/2010

Element	Project	Contract	Change Order No	< \$150K	\$150K - \$1Mil	> \$1Mil	Notes
Bradley West Element							
DA-4337 - BRADLEY WEST GATES (DA-4337)							
	DA-4337/CGMP02		0007	(\$148,822)			Fee CGMP02, City Revenue Tax CGMP02, CW Back up steel
	DA-4337/CGMP02		0008	\$143,486			IWBT Mezzanine rail, IWBT safety rail, Fee CGMP02, City Revenue Tax CGMP02, IWBT SOG Underlayment, IWBT Misc Metals
	DA-4337/CGMP02		0009	\$54,645			CD 0039 IWBT Low Voltage Drawings and Specifications, Hardware, Egress Bulletin EP7-B3 Revision at Gate 123, East Egress - RFI 1589 Deletion of Guardrail at Parkway Drain, East Egress RFI 1729 relocation of Existing VAV at Gate 102, IWBT Security and Door Hardware, Fee CGMP02, City Revenue Tax CGMP02
	DA-4337/CGMP02		0010	\$65,662			East Egress - Sump Pump Changes for LADBS Plan Check per RFI 1541, East Egress - Terminating exposed conduits, wire, convenience outlets, floor receptacles in C&M office space Egress Stairs- BWGA, Fee CGMP02, City Tax
	DA-4337/CGMP02		0011	\$139,747			Fee CGMP02, City Revenue Tax CGMP02, IWBT IFC Set Changes and Bulletin H001 (Concrete)
	DA-4337/CGMP02		0012	\$99,903			BWG - Pricing Comparison for Bus Connector Windows, Fee CGMP02, City Revenue Tax CGMP02
	DA-4337/CGMP02		0013	\$11,812			IWBT Additional Seating Move, ISEC - Interior Architecture - IWBT, Hasson - Painting - IWBT Redesign of Connector/IWBT, Fee CGMP02, City Revenue Tax CGMP02
	DA-4337/CGMP04		0002	\$114,547			CD 0048 Bulletin 0 dated 4/2/10 Concrete Revised, CGMP04 Fee, CGMP04 City Tax
	DA-4337/CGMP04		0003	\$10,417			JT Wimsatt - RFI 0845, 1274, 924, 927 Additional rebar at Basement Columns, CGMP04 Fee, CGMP04 City Tax
	DA-4337/CGMP04		0004		\$184,470		CGMP04 Fee, CGMP04 City Tax, Reinforcing Steel and Miscellaneous Supplies: Cast in Place Concrete (REBAR)Concrete BP-05, CD 0126, 0139 - RFI 2136 Sump Pit Replacement
	DA-4337/CGMP04		0005		\$188,757		CGMP04 Fee, CGMP04 City Tax, Gates Bulletin 5 dated July 23, 2010 (Concrete)
	DA-4337/CGMP05		0004	\$109,814			CD 0015 BWG Compiled Bulletin 0 dated 04/02/2010 (Conveyance) BWGA, CMAR Fee, City Tax
	DA-4337/CGMP06		0002		\$594,728		Crown Corr - Metal Roof - BWGA, Crown Corr - Metal Roof - BWGA, Fee, City Tax
	DA-4337/CGMP07		0002			\$2,039,239	CD 0015 BWG Compiled Bulletin 0 dated 04/02/2010 (Mechanical), CMAR Fee, City Tax
	DA-4337/CGMP08		0001			\$6,307,488	Bulletin 0 Electrical, Bulletin 0 Communications, Bulletin 0 Alarms & Surveillance, CMAR Fee, City Tax
DA-4382 - BRADLEY WEST CORE (DA-4382)							
	DA-4382/CGMP02		0003	\$84,093			Fee, Gross Receipts Tax, Subcontractor

Bradley West Element

DA-4382 - BRADLEY WEST CORE (DA-4382)

DA-4382/CGMP02	0004			\$1,393,451	Fee, Gross Receipts Tax, Subcontractor
DA-4382/CGMP02	0005		\$964,933		CCP Contaminated Materials Discovered in Existing TBIT Retaining Wall, CMAR Fee, City Tax
DA-4382/CGMP03	0002	(\$35,743)			TPAR insufficient room for cables per CD 0029, Subcontractor, Replace 480V pullbox per RFI 0481, Subcontractor, Fee (including other CPCNs in CGMP 3.02), Gross Receipts Tax, Subcontractor
DA-4382/CGMP03	0003	\$9,286			TPAR Over Excavation of Electrical Ductbank trenches deemed unstable sub-grade by LADBS, CMAR Fee, City Tax
DA-4382/CGMP04	0008	\$44,274			Repair Leaking Pipes, CMAR Fee, City Tax
DA-4382/CGMP04	0009	\$2,135			Knox Box, CMAR Fee, City Tax
DA-4382/CGMP04	0010		\$228,214		CMAR Fee, City Tax, QSPI Exterior Cladding TBIT West Wall
DA-4382/CGMP04	0011	\$33,131			Uncertified fill at bottom of excavation, CMAR Fee, City Tax
DA-4382/CGMP04	0012	\$693			CMAR Fee, City Tax, CD 0020 Standpipe Conversion - System Draining-Final Day Conversion - System Draining- Final Day
DA-4382/CGMP05	0002		\$447,436		Roofing- Bulletin 2, WAJV Fee, City Tax
DA-4382/CGMP07	0001	\$63,607			RFI 0845 New Corner Dies for Arrow Mullions (Walters & Wolf) Curtainwall, CMAR Fee, City Tax

CHANGE ORDERS - Continued as of 12/31/2010

Element	Project	Contract	Change Order No	< \$150K	\$150K - \$1Mil	> \$1Mil	Notes
CUP Replacement Element							
Utilities & Infrastructure Element							
U009A - AIRPORT RESPONSE COORDINATION CENTER (ARCC)							
	DA-4462/000000		0005	\$15,186			Power Source for Emergency Lighting, Additional LCD Backing, Data Outlet and Electrical Receptacle, Temporary Power, Corrective Work for ARCC Hard-Lid Ceilings, Corrective Work for ARCC Hard-Lid Ceilings, Location of Electrical Panels IHA-LS & IHL-LS, Combination Starter/Disconnect Switch
Landside Element							
Residential/Soundproofing Element							
Terminal Element							
TBIT Renovation Element							

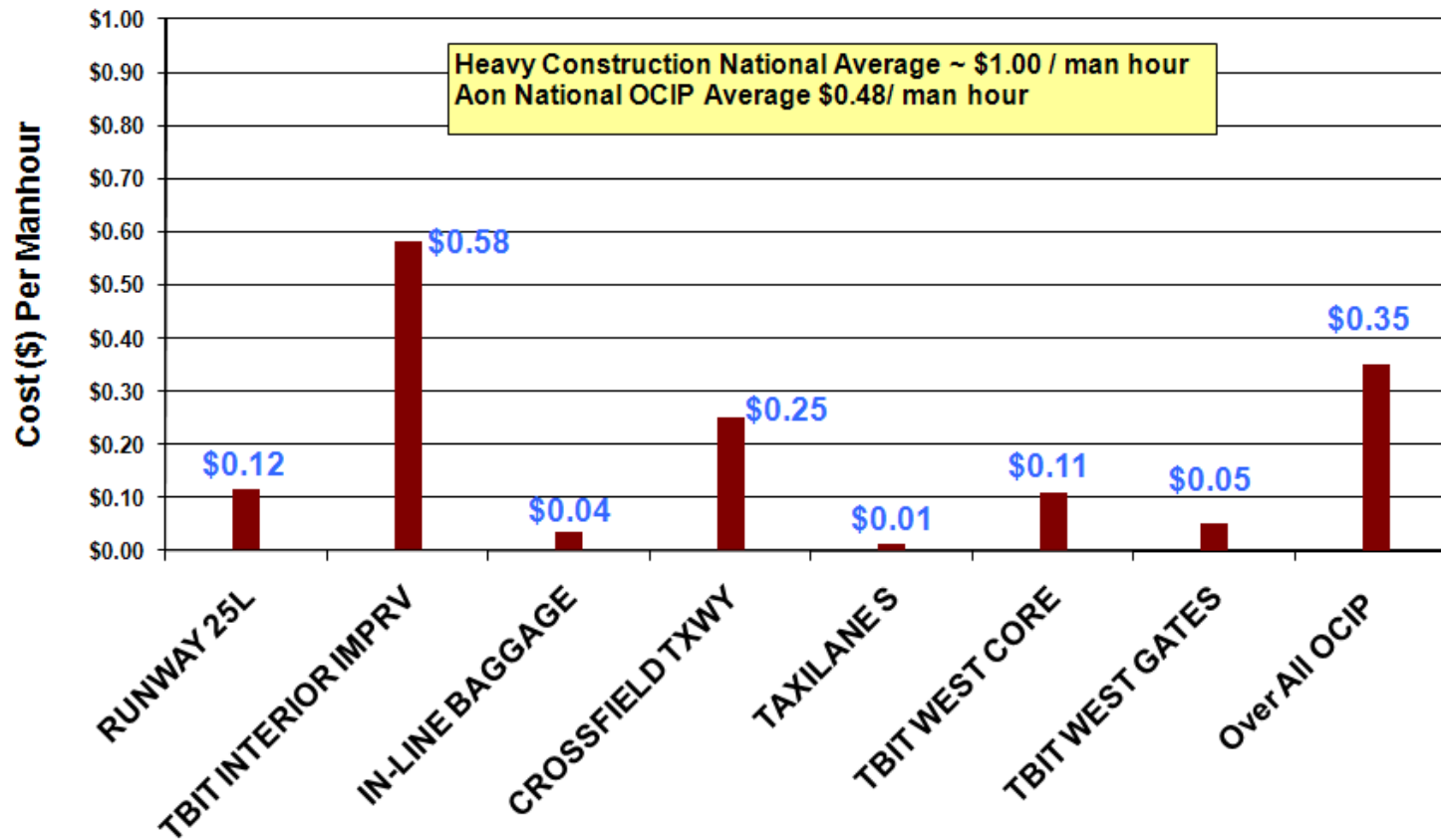
Bradley West- Gates

CHANGE TYPE	EXECUTED CHANGES (CUMMULATIVE \$)	APPROVED CHANGES (CUMMULATIVE \$)	SUBTOTAL	% OF CONTRACT VALUE
DESIGN EVOLUTION	\$12,398,286.00	\$40,159,377.00	\$52,557,663.00	9.63%
DOCUMENT CORRECTION	-\$193,907.00	\$182,068.00	-\$11,839.00	0.00%
FIELD CONDITIONS	\$638,683.00	\$230,816.00	\$869,499.00	0.16%
OWNER BETTERMENT	\$3,035,523.00	\$0.00	\$3,035,523.00	0.56%
CODE REQUIREMENT	\$261,540.00	\$108,025.00	\$369,565.00	0.07%
TOTAL	\$16,140,125.00	\$40,680,286.00	\$56,820,411.00	10.42%

Bradley West- CORE

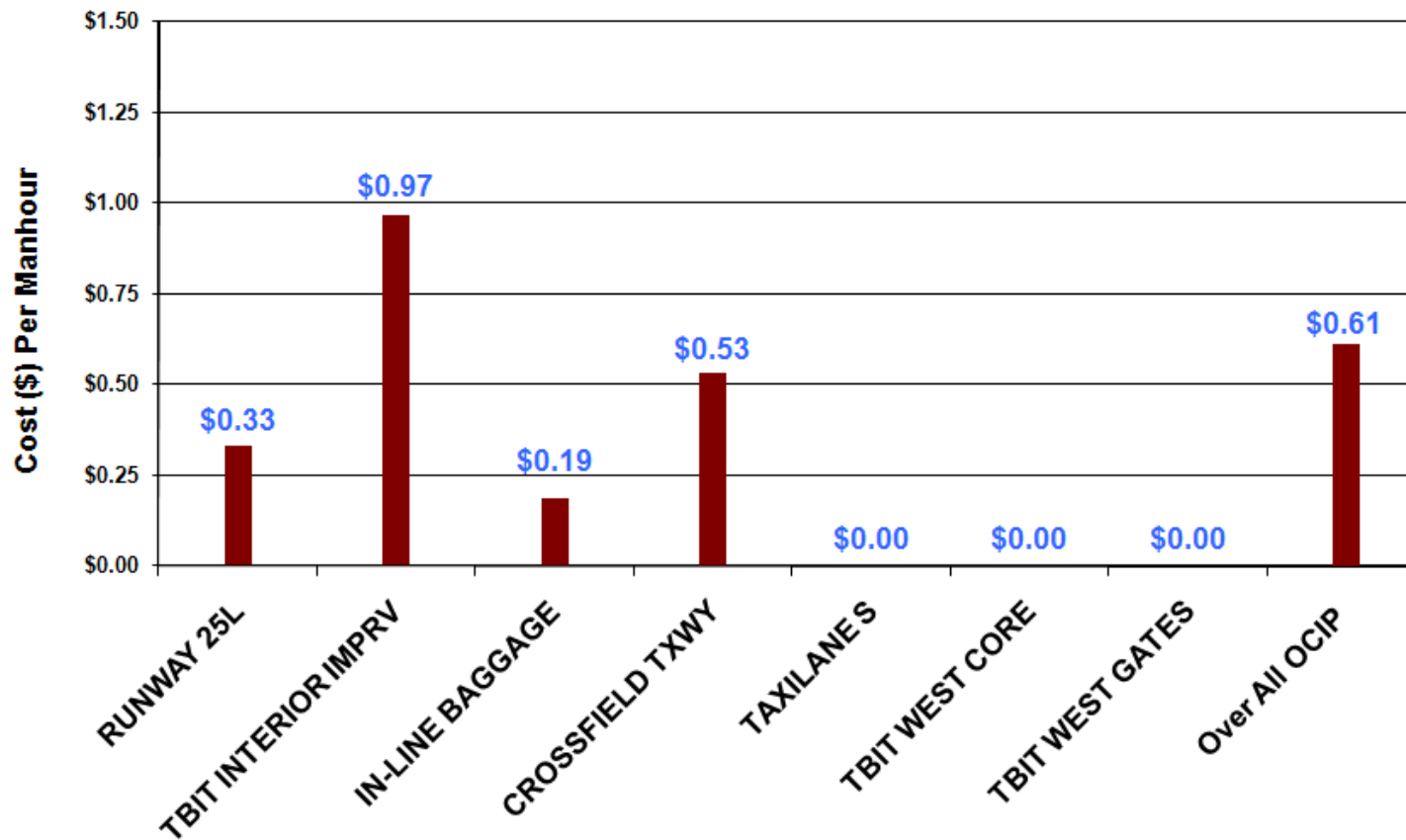
CHANGE TYPE	EXECUTED CHANGES (CUMMULATIVE \$)	APPROVED CHANGES (CUMMULATIVE \$)	SUBTOTAL	% OF CONTRACT VALUE
DESIGN EVOLUTION	\$1,415,437.00	\$9,978,006.00	\$11,393,443.00	1.95%
DOCUMENT CORRECTION	\$0.00	-\$61,182.00	-\$61,182.00	-0.01%
FIELD CONDITIONS	\$1,753,909.00	\$3,763,159.00	\$5,517,068.00	0.94%
OWNER BETTERMENT	\$8,293,429.00	-\$20,815.00	\$8,272,614.00	1.42%
CODE REQUIREMENT	\$313,874.00	\$14,768.00	\$328,642.00	0.06%
TOTAL	\$11,776,649.00	\$13,673,936.00	\$25,450,585.00	4.36%

**LAWA OCIP Workers Compensation Loss Performance
- as of November 30, 2010 -**

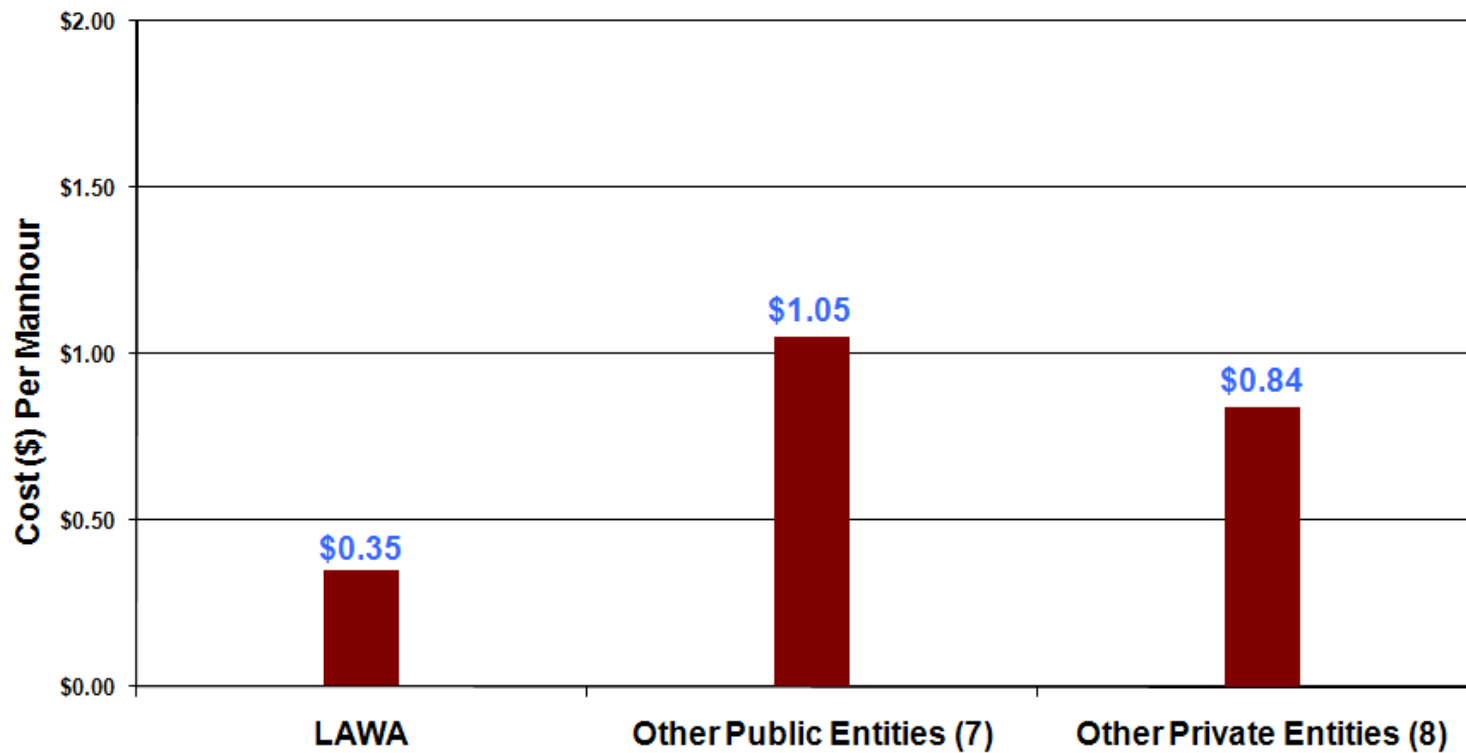


OCIP - Continued
as of 11/30/2010

LAWA OCIP General Liability Loss Performance
- as of November 30, 2010 -



**Current Large OCIP Projects
Comparison of Workers Comp Costs Per Manhour**



**MWBE/DBE
Subcontractor Utilization Summary Report
as of 11/30/2010**

Firm	Contract No.	DBE or M/WBE Contract	Proposed Level of Participation	Achieved Participation to Date*				Remarks
				M/WBE	DBE			
CH2M Hill	DA-4414	M/WBE	22.00 %	37.22 %	N/A			
AECOM Technical Services, Inc.	DA-4260	DBE	12.00 %	N/A	19.45			
Fentress Architects	DA-4274	DBE	9.30 %	15.64 %	6.88			
Flatiron West, Inc.	DA-4398	DBE	1.00 %	0.09 %	18.11			
Griffith Company	DA-4315	M/WBE	9.60 %	9.95 %	N/A			
Griffith Company	DA-4338	M/WBE	6.60 %	2.44 %	N/A			
Griffith Company	DA-4478	M/WBE	23.70 %	19.88 %	N/A			
Griffith Company	DA-4498	DBE	0.35 %	N/A	0.00			
Hatch Mott MacDonald, LLC	DA-4275	DBE	11.63 %	N/A	21.40			
Hellmuth, Obata + Kassabaum,	DA-4313	M/WBE	25.00 %	38.52 %	N/A			
Jacobs Project Management Co.	DA-4417	M/WBE	25.00 %	0.00 %	N/A			
Paragon Project Resources, Inc.	DA-4332	M/WBE	16.00 %	5.38 %	N/A			
Parsons Transportation Group,	DA-4415	M/WBE	23.00 %	51.42 %	N/A			
Paslay Management Group	DA-4324	M/WBE	10.00 %	15.38 %	N/A			
R & L Brosamer	DA-4331	M/W/DBE	15.40 %	7.84 %	3.49		Combined = MBE+WBE+DBE = 11.33%	
Technion Contractors	DA-4462	M/WBE	0.16 %	0.00 %	N/A			
Tobo Construction	DA-4354	DBE	0.00 %	14.59 %	2.33			
Vanir Construction Management,	DA-4416	M/WBE	20.00 %	17.78 %	N/A			
W.E. O'Neil	DA-4371	M/WBE	6.80 %	10.03 %	N/A			
Walsh Austin Joint Venture - Pre-Construction (Gates)	DA-4337	M/WBE	20.00 %	32.09 %	N/A			
Walsh Austin Joint Venture - Construction (Gates)	DA-4337	M/WBE	14.00 %	11.65 %	N/A			
Walsh Austin Joint Venture - Pre-Construction (Core)	DA-4382	M/WBE	20.00 %	26.64 %	N/A			
Walsh Austin Joint Venture - Construction (Core)	DA-4382	M/WBE	14.00 %	14.53 %	N/A			
Total Participation:	N/A	N/A	N/A	10.61%	6.28%			
Total Combined Participation:	N/A	N/A	N/A	16.89%				

*Achieved Participation to Date includes progress in the pledged program and progress outside of the pledge.

