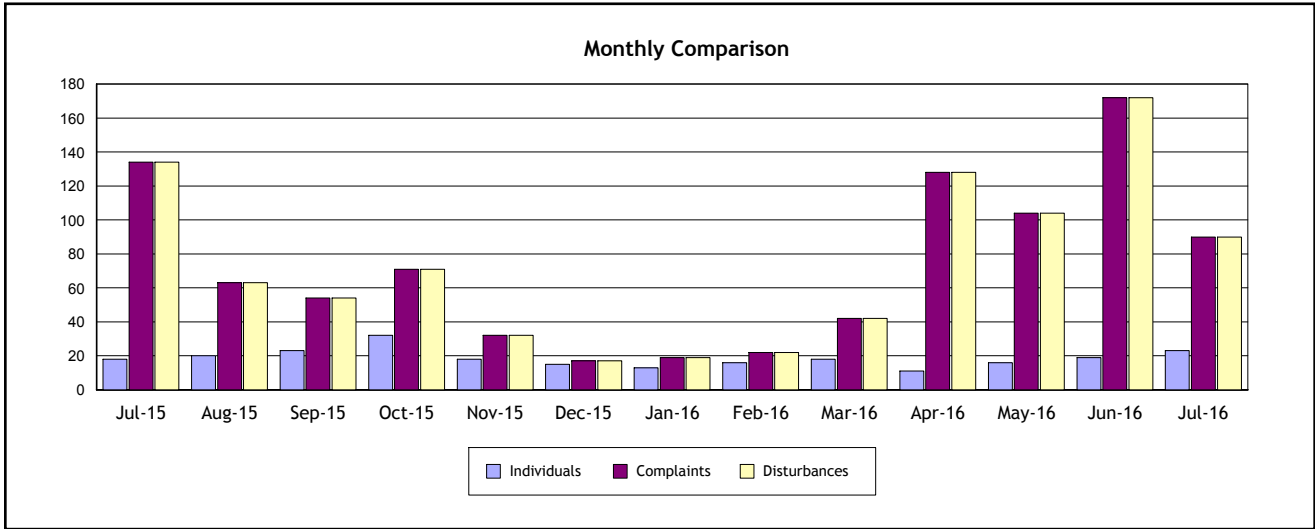


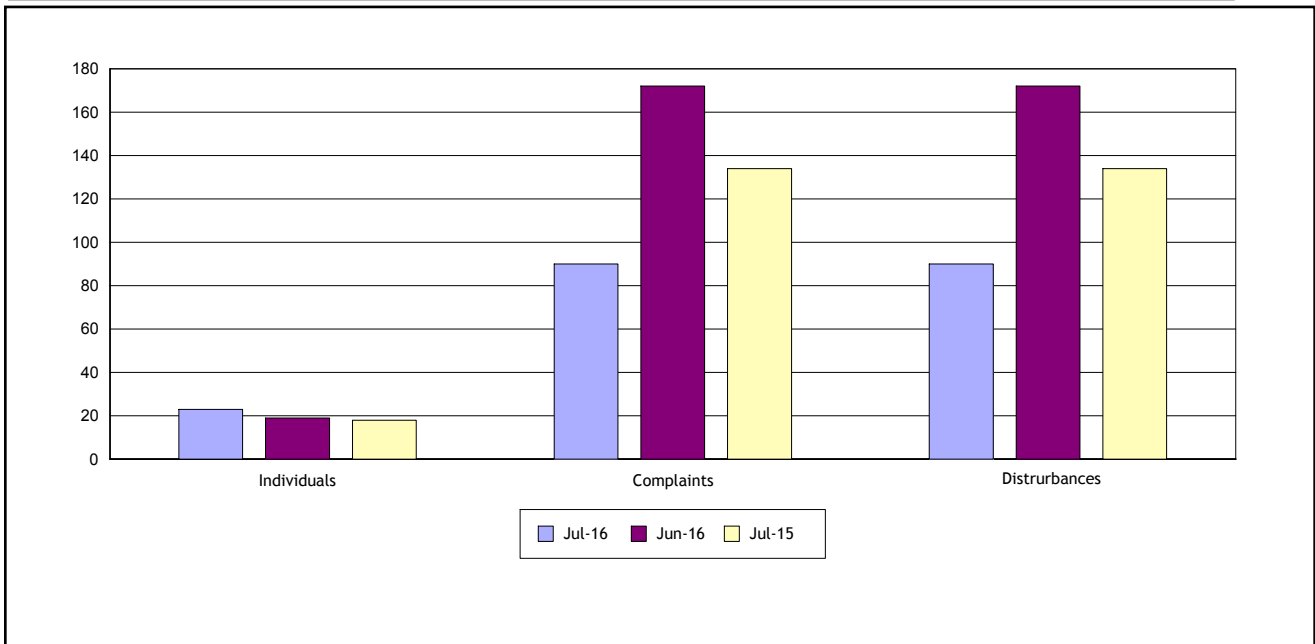
Individuals Submitting Noise Complaints **23**

Noise Complaints Received **90**

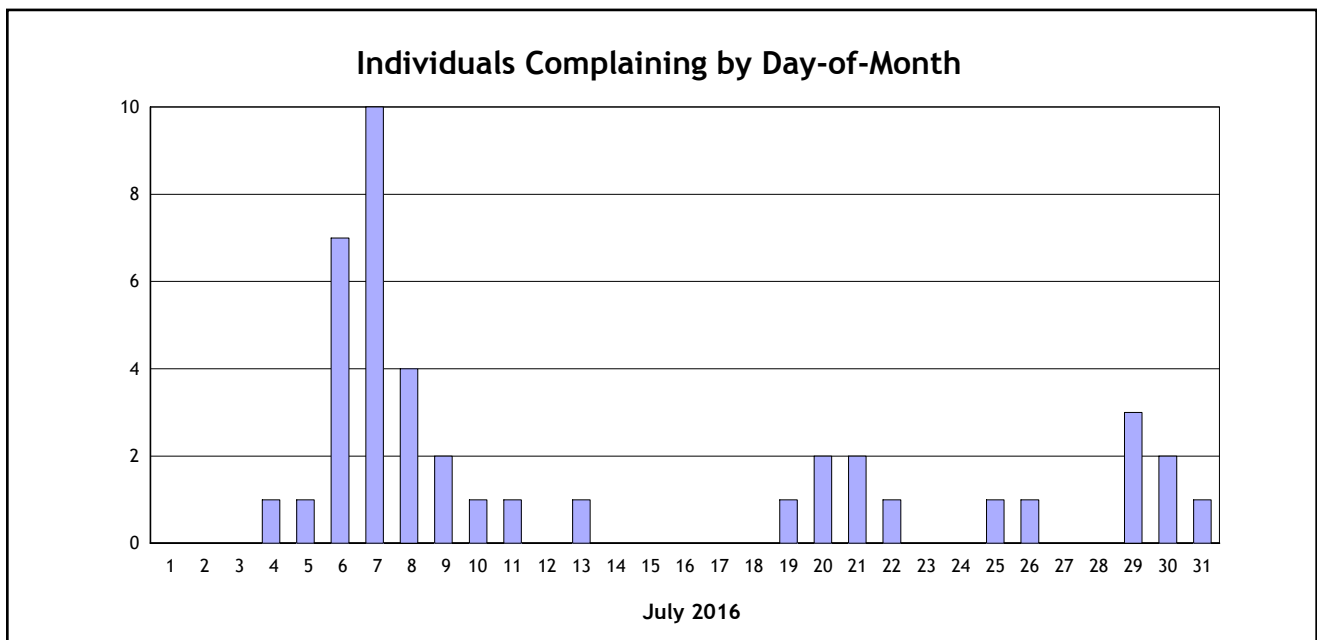
Noise Disturbances Reported **90**



| | July 2016 | June 2016 | % Change | July 2015 | % Change |
|---------------------|-----------|-----------|----------|-----------|----------|
| Individuals | 23 | 19 | 21% | 18 | 28% |
| Complaints | 90 | 172 | -48% | 134 | -33% |
| Disturbances | 90 | 172 | -48% | 134 | -33% |



| | Day (7:00 am - 7:00 pm) | Evening (7:00 pm - 10:00 pm) | Night (10:00 pm - 7:00 am) |
|--------------|-----------------------------|---------------------------------|-------------------------------|
| Complaints | 53 | 9 | 28 |
| Disturbances | 54 | 1 | 35 |



| City | Individuals | Complaints | Percentage of Complaints** |
|-----------------|-------------|------------|----------------------------------|
| Encino | 3 | 3 | 3% |
| Granada Hills | 2 | 3 | 3% |
| Los Angeles | 11 | 50 | 56% |
| North Hollywood | 1 | 1 | 1% |
| Playa Del Rey | 1 | 1 | 1% |
| Port Jefferson | 1 | 2 | 2% |
| Sherman Oaks | 2 | 5 | 6% |
| Unknown | 1 | 1 | 1% |
| Van Nuys | 1 | 11 | 12% |
| Anonymous | NA | 13 | 14% |
| TOTAL | 23 | 90 | 0 10 20 30 40 50 60 70 80 90 100 |

| Individuals | Complaints | Percentage of Complaints** |
|---|-------------------------|----------------------------------|
| *One Individual (Los Angeles) | 21 | 23% |
| *One Individual (Anonymous) | 13 | 14% |
| *One Individual (Van Nuys) | 11 | 12% |
| *One Individual (Los Angeles) | 9 | 10% |
| *One Individual (Los Angeles) | 9 | 10% |
| Individuals Reporting 2 To 5 Complaints | 13 | 14% |
| Individuals Reporting One Complaint | 14 | 16% |
| TOTAL | Individuals : 23 | 90 |
| | | 0 10 20 30 40 50 60 70 80 90 100 |

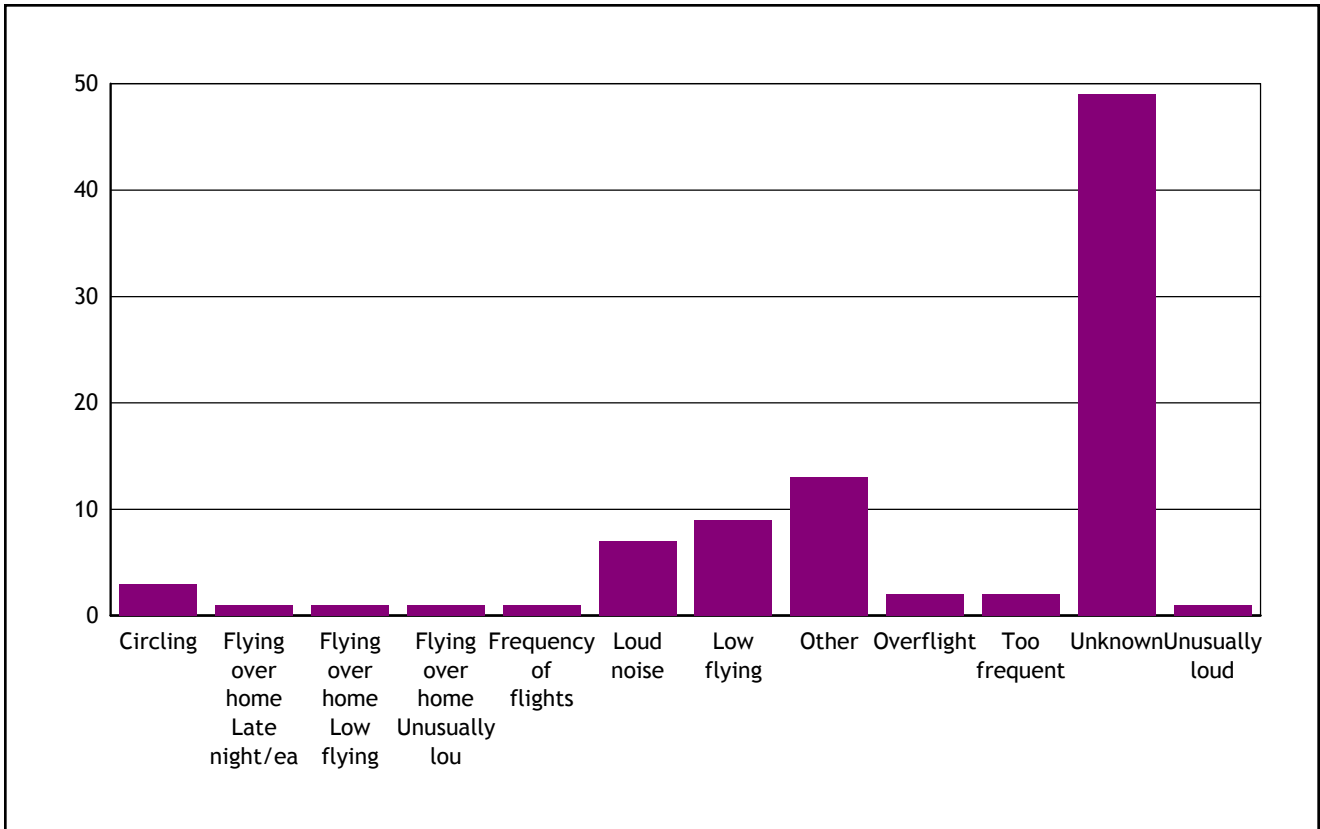
* One individual reporting 6 or more complaints shown by city.

** All percentages are rounded to the nearest whole number.

| <i>Type of Disturbance*</i> | <i>Number of Complaints</i> |
|-----------------------------|-----------------------------|
| Circling | 3 |
| Flying over home | 1 |
| Flying over home | 1 |
| Flying over home | 1 |
| Frequency of flights | 1 |
| Loud noise | 7 |
| Low flying | 9 |
| Other | 13 |
| Overflight | 2 |
| Too frequent | 2 |
| Unknown | 49 |
| Unusually loud | 1 |
| TOTAL | 90 |

Type of Disturbance*

Number of Complaints



Note: * As reported by complainant.

| Contact | | Disturbance | | City | Disturbance** | Findings |
|-----------|----------|-------------|----------|--------------|---------------|--|
| Date | Time | Date | Time | | | |
| 7/04/2016 | 7:55 am | 7/03/2016 | 8:36 pm | Encino | Loud noise | The aircraft noise you reported on Sunday, July 3, 2016 at 2036 was associated with a modified Stage 3 Gulfstream G-III departure from VNY. The departure from VNY runway 16R was under the control and direction of Federal Aviation Administration (FAA) Air Traffic Controllers (ATC). The departure was consistent with normal VNY departure operations. The Gulfstream was climbing and was approximately 2736 feet Mean Sea Level (MSL) over your neighborhood when SoCal Departure ATC directed the pilots to turn to 080 degrees. Additionally, the aircraft-specific Single Event Noise Exposure Level (SENEL) established in the VNY Fly Friendly Quiet Jet Departure Program was not exceeded. Please see page 8 of the VNY Noise Program brochure for more information on the program at: www.lawa.org/uploadedFiles/VNY/pdf/Noise_Programs.pdf |
| 7/07/2016 | 2:41 pm | 7/07/2016 | 2:41 pm | Sherman Oaks | Low flying | The aircraft noise you reported on Thursday, July 7, 2016 at 1441 was associated with a Gulfstream G-IV departure from VNY. The departure from VNY runway 16R was under the control and direction of Federal Aviation Administration (FAA) Air Traffic Controllers (ATC). The aircraft was approximately 2585 feet Mean Sea Level (MSL) over your neighborhood and was in a climbing turn. The pilot was cleared to climb to 14,000 feet MSL during this turn. The departure was consistent with normal VNY departure operations. Additionally, the aircraft-specific Single Event Noise Exposure Level (SENEL) established in the VNY Fly Friendly Quiet Jet Departure Program was not exceeded. Please see page 8 of the VNY Noise Program brochure for more information on the program at: www.lawa.org/uploadedFiles/VNY/pdf/Noise_Programs.pdf Please note that airports do not have jurisdiction on aircraft in flight. The Federal Aviation Administration has ultimate authority over aircraft flight patterns and regulates virtually all aviation activities. This includes altitudes and direction of flight with the major emphasis on safety. Please contact the FAA by writing to FAA Western-Pacific Region, P.O. Box 92007, Los Angeles, CA 90009 for further information. |
| 7/09/2016 | 11:28 pm | 7/09/2016 | 11:30 pm | Encino | Other | The aircraft noise that you reported on Saturday, July 7, 2016 at 2328 was a departing Citation C560 conducting a Medevac Operation (Lifesaving operation) under the control and direction from FAA SoCal ATC. Please note that the VNY curfew does not affect newer |

Note : Investigation currently limited to one report of disturbance per complaint, and a maximum of five complaints per individual per month.

* Complaints exceeding monthly limit and/or anonymous complaints are not investigated and are not shown.

** Disturbance is as reported by complainant.

| Contact | | Disturbance | | City | Disturbance | Findings |
|-----------|----------|-------------|----------|---------------|-------------|--|
| Date | Time | Date | Time | | | |
| | | | | | | <p>Stage 3 or Stage 4 aircraft, helicopters, medical life-flights (Medevac Operations), military or other government owned/operated aircraft involved in law enforcement, emergency response, fire or rescue operations are exempt from the curfew. The Ordinance can be viewed on line at: www.lawa.org/welcome_VNY.aspx?id=1034. Also attached is the VNY Noise Management "Quick Facts" for your reference. *****</p> <p>LEN - INCLUDE THE CAN/CAN'T Quick Facts sheet*****</p> |
| 7/10/2016 | 6:21 pm | 7/10/2016 | 6:21 pm | Sherman Oaks | Low flying | <p>The jet airplane you reported on Sunday, July 10, 2016 at 1821 was a Gulfstream G-IVSP that departed from VNY under the control and direction of Federal Aviation Administration (FAA) Air Traffic Controllers (ATC). The Gulfstream was directed to turn to a heading of 330 degrees and to climb and maintain 10,000 feet Mean Sea Level (MSL) when turning near your neighborhood. The aircraft was approximately 2715 feet MSL as measured by VNY's Airport Noise and Operations Monitoring System (ANOMS) over your approximate residence location. The departure was consistent with normal VNY departure operations. Airports do not direct or control aircraft. The FAA has ultimate authority over aircraft flight patterns and regulates virtually all aviation activity with the major emphasis on safety. The FAA may be contacted by writing to FAA Western-Pacific Region, P.O. Box 92007, Los Angeles, CA 90009 for further information.</p> |
| 7/11/2016 | 12:11 am | 7/11/2016 | 12:05 am | Granada Hills | Overflight | <p>The aircraft you reported on Monday, July 11 at 00:05 was an Gulfstream G200 that arrived at VNY under the control and direction of Federal Aviation Administration (FAA) SoCal Air Traffic Controllers (ATC). This arrival was consistent with normal VNY arrival procedures. Please note that the "partial" curfew does not prohibit any aircraft from landing at VNY. The Ordinance can be viewed on line at: www.lawa.org/welcome_VNY.aspx?id=1034. Also attached is the VNY Noise Management "Quick Facts" for your reference. Lastly, as you are already aware, your residence is located near the standard arrival route for runways 16R and 16L and is subject to numerous arrival aircraft on final approach for landing. Flight patterns and altitudes for aircraft are standardized and determined by FAA procedures and electronic navigational aid equipment. These air routes are established to ensure flights, from various directions, receive adequate separation while approaching and departing Los Angeles area airports. Airports do not control aircraft. The FAA has ultimate authority over aircraft flight patterns and regulates virtually all aviation activity. This includes takeoffs, landings, altitudes and direction of flight with the major emphasis on safety. Please contact the FAA at FAA Western-Pacific Region, P.O. Box 92007, Los Angeles, CA 90009 for more</p> |

Note : Investigation currently limited to one report of disturbance per complaint, and a maximum of five complaints per individual per month.

* Complaints exceeding monthly limit and/or anonymous complaints are not investigated and are not shown.

** Disturbance is as reported by complainant.

| Contact | | Disturbance | | City | Disturbance | Findings |
|-----------|----------|-------------|----------|---------------|-------------|---|
| Date | Time | Date | Time | | | |
| | | | | | | information regarding this matter. ***** |
| | | | | | | LEN - INCLUDE THE CAN/CAN'T Quick Facts sheet***** |
| 7/29/2016 | 6:40 pm | 7/29/2016 | 6:40 pm | Sherman Oaks | Unknown | The aircraft noise you reported on Friday, July 29, 2016 at 1840 was associated with a modified Stage 3 Gulfstream G-III departure from VNY. The departure from VNY runway 16R was under the control and direction of Federal Aviation Administration (FAA) Air Traffic Controllers (ATC). The departure was consistent with normal VNY departure operations. The aircraft was approximately 2805 feet Mean Sea Level (MSL) as measured by VNY's Airport Noise and Operations Monitoring System (ANOMS) over your approximate location. Please contact the FAA at (818) 904-6291 (safety issues) or by writing to FAA Western-Pacific Region, P.O. Box 92007, Los Angeles, CA 90009 for further information regarding aviation flight issues. |
| 7/30/2016 | 10:00 pm | 7/30/2016 | 10:00 pm | Sherman Oaks | Unknown | The aircraft noise you reported on Saturday, July 30, 2016 at 2200 was associated with a Hawker 900XP departure from VNY. The departure from VNY runway 16R was under the control and direction of Federal Aviation Administration (FAA) Air Traffic Controllers (ATC). The departure was consistent with normal VNY departure operations. The aircraft was approximately 2685 feet Mean Sea Level (MSL) as measured by VNY's Airport Noise and Operations Monitoring System (ANOMS) over your approximate location. Please contact the FAA at (818) 904-6291 (safety issues) or by writing to FAA Western-Pacific Region, P.O. Box 92007, Los Angeles, CA 90009 for further information regarding aviation flight issues. |
| 7/30/2016 | 10:27 pm | 7/30/2016 | 10:27 pm | Granada Hills | Low flying | The aircraft you reported on Saturday, July 30, 2016 at 2227 was a Gulfstream G-IVSP arrival conducted under the control and direction of Federal Aviation Administration (FAA) SoCal Air Traffic Controllers (ATC). This arrival was consistent with normal VNY arrival procedures. This arrival passed over your neighborhood at approximately 2065 feet Mean Sea Level (MSL), which is normal for an aircraft on a short final approach to land. |
| 7/30/2016 | 10:31 pm | 7/30/2016 | 5:00 pm | Granada Hills | Low flying | The aircraft you reported on Saturday, July 30, 2016 at 1700 was a Challenger 601-3A arrival conducted under the control and direction of Federal Aviation Administration (FAA) Air Traffic Controllers (ATC). This arrival was consistent with normal VNY arrival procedures. This arrival passed over your neighborhood at approximately 1855 feet Mean Sea Level (MSL) which is normal for an aircraft on a short final approach to land. Your |

Note : Investigation currently limited to one report of disturbance per complaint, and a maximum of five complaints per individual per month.

* Complaints exceeding monthly limit and/or anonymous complaints are not investigated and are not shown.

** Disturbance is as reported by complainant.

| Contact | | Disturbance | | City | Disturbance | Findings |
|-----------|---------|-------------|---------|--------|-------------|---|
| Date | Time | Date | Time | | | |
| | | | | | | <p>residence is located near the standard arrival route for runways 16R and 16L and is subject to numerous arrival aircraft on final approach for landing. Flight patterns and altitudes for aircraft are standardized and determined by FAA procedures and electronic navigational aid equipment. These air routes are established to ensure flights, from various directions, receive adequate separation while approaching and departing Los Angeles area airports. Aircraft do not fly over a line on the ground. Aircraft executing the same procedures will have a natural spread where they fly over the ground. Please note that airports do not have jurisdiction on aircraft in flight. Arrival and departure patterns at VNY are not within our jurisdiction, but we try to work with the FAA to minimize the impact on nearby residential areas. The FAA has ultimate authority over aircraft flight patterns and regulates virtually all aviation activity. This includes takeoffs, landings, altitudes and direction of flight with the major emphasis on safety. Please contact the FAA at FAA Western-Pacific Region, P.O. Box 92007, Los Angeles, CA 90009 for more information regarding this matter.</p> |
| 7/31/2016 | 2:27 am | 7/31/2016 | 2:27 am | Encino | Unknown | <p>The Los Angeles Police Department Air Support Division (LAPD ASD) which was conducting official LAPD business operated the helicopter you reported on Sunday, July 31, 2016 at 0227. The LAPD ASD routinely patrols and supports police ground units in the many neighborhoods located within the City of Los Angeles. It is not uncommon to have multiple fly-overs of an area during a relatively short period. This helicopter overflight was not associated with Van Nuys Airport (VNY) operations.</p> |

Note : Investigation currently limited to one report of disturbance per complaint, and a maximum of five complaints per individual per month.

* Complaints exceeding monthly limit and/or anonymous complaints are not investigated and are not shown.

** Disturbance is as reported by complainant.