

California State Airport Noise Standards Quarterly Report

Fourth Quarter 2022



LOS ANGELES INTERNATIONAL AIRPORT

Los Angeles World Airports

February 23, 2023

TABLE OF CONTENTS

California State Airport Noise Standards Quarterly Report

1. Division of Aeronautics Form 617
2. Incompatible Land Use Data
3. Daily Aircraft CNEL Data
4. Runway Utilization Report
 - Summary of Runway Use
 - Summary of Runway Flow
5. Average Daily Runway Use by Aircraft Type
 - 24 Hour Average
 - Night-time Average (10pm – 7am)
6. Average Daily Runway Use by Aircraft Group
 - 24 Hour Average
 - Night-time Average (10pm – 7am)
7. Summary of Actions

Attachment

Noise contour map

**SUMMARY OF STATISTICAL INFORMATION
FOR
CALIFORNIA DEPARTMENT OF TRANSPORTATION**

Los Angeles International Airport
Fourth Quarter 2022

1. Size of Noise Impact Area as defined in the Noise Standards (California Code of Regulations, Title 21, Chapter 2.5, Subchapter 6):

340.9 Acres

2. Estimated number of dwelling units included in the Noise Impact Area as defined in the Noise Standards:

4,378

3. Estimated number of people residing within the Noise Impact Area as defined in the Noise Standards:

16,895

4. Identification of aircraft type having highest takeoff noise level operating at this airport together with estimated number of operations by this aircraft type during the calendar quarter reporting period:

B747: 2,792

5. Total number of aircraft operations during the calendar quarter*:

136,714

6. Number of Air Carrier operations during the calendar quarter: (Not Mandatory)*

126,458

7. Percentage of Air Carrier operations by aircraft certificated under Federal Aviation Regulation (FAR) Part 36, Stage III. (Not Mandatory)

100 %

8. Estimated number of operations by General Aviation aircraft during the calendar quarter: (Not Mandatory)*

3,564

9. Estimated number of operations by Military aircraft during the calendar quarter: (Not Mandatory)*

174

LOS ANGELES INTERNATIONAL AIRPORT

Incompatible Land Use

Annual Noise Impact Accumulated by Noise Zone: CNEL 65, 70, and 75 +

4Q22	Total Cumulative Noise Impact Areas - All Jurisdictions											
	<i>CNEL 65 dB and Above</i>				<i>CNEL 70 dB and Above</i>				<i>CNEL 75 dB and Above</i>			
	Land Use	Acres	Dwelling Units	Parcels	Population	Acres	Dwelling Units	Parcels	Population	Acres	Dwelling Units	Parcels
Single Family	169.6	1,160	1,187	4,427	28.7	184	186	845	0.0	0	0	0
Multi-Family	153.8	3,210	946	12,419	30.1	515	216	2,016	0.0	0	0	0
Mobile Home	0.6	0	2	0	0.0	0	0	0	0.0	0	0	0
Schools	3.5	0	19	0	3.0	0	17	0	0.0	0	0	0
Churches	13.4	8	24	19	2.4	0	2	0	0.0	0	0	0
Hospitals	0.0	0	0	0	0.0	0	0	0	0.0	0	0	0
Total Incompatible	340.9	4,378	2,178	16,865	64.2	699	421	2,862	0.0	0	0	0

Note: Parcels and dwelling units may not match for single family land uses due to subdivision.
Parcels for multifamily land uses reflect only the common area parcel, except for condominiums.

Report Date: 02/22/2023

LOS ANGELES INTERNATIONAL AIRPORT

Incompatible Land Use

Annual Noise Impact Accumulated by Noise Zone: CNEL 65, 70, and 75 +

4Q22	Total Cumulative Noise Impact Areas - Athens											
	<i>CNEL 65 dB and Above</i>				<i>CNEL 70 dB and Above</i>				<i>CNEL 75 dB and Above</i>			
	Land Use	Acres	Dwelling Units	Parcels	Population	Acres	Dwelling Units	Parcels	Population	Acres	Dwelling Units	Parcels
Single Family	11.1	86	99	313	0.0	0	0	0	0.0	0	0	0
Multi-Family	11.9	214	83	758	0.0	0	0	0	0.0	0	0	0
Mobile Home	0.0	0	0	0	0.0	0	0	0	0.0	0	0	0
Schools	0.0	0	0	0	0.0	0	0	0	0.0	0	0	0
Churches	0.4	0	2	0	0.0	0	0	0	0.0	0	0	0
Hospitals	0.0	0	0	0	0.0	0	0	0	0.0	0	0	0
Total Incompatible	23.4	300	184	1,072	0.0	0	0	0	0.0	0	0	0

Note: Parcels and dwelling units may not match for single family land uses due to subdivision.
Parcels for multifamily land uses reflect only the common area parcel, except for condominiums.

Report Date: 02/22/2023

LOS ANGELES INTERNATIONAL AIRPORT

Incompatible Land Use

Annual Noise Impact Accumulated by Noise Zone: CNEL 65, 70, and 75 +

4Q22	Total Cumulative Noise Impact Areas - Del Aire											
	<i>CNEL 65 dB and Above</i>				<i>CNEL 70 dB and Above</i>				<i>CNEL 75 dB and Above</i>			
	Land Use	Acres	Dwelling Units	Parcels	Population	Acres	Dwelling Units	Parcels	Population	Acres	Dwelling Units	Parcels
Single Family	0.0	0	0	0	0.0	0	0	0	0.0	0	0	0
Multi-Family	0.0	0	0	0	0.0	0	0	0	0.0	0	0	0
Mobile Home	0.0	0	0	0	0.0	0	0	0	0.0	0	0	0
Schools	0.0	0	0	0	0.0	0	0	0	0.0	0	0	0
Churches	0.0	0	0	0	0.0	0	0	0	0.0	0	0	0
Hospitals	0.0	0	0	0	0.0	0	0	0	0.0	0	0	0
Total Incompatible	0.0	0	0	0	0.0	0	0	0	0.0	0	0	0

Note: Parcels and dwelling units may not match for single family land uses due to subdivision.
 Parcels for multifamily land uses reflect only the common area parcel, except for condominiums.

Report Date: 02/22/2023

LOS ANGELES INTERNATIONAL AIRPORT

Incompatible Land Use

Annual Noise Impact Accumulated by Noise Zone: CNEL 65, 70, and 75 +

4Q22	Total Cumulative Noise Impact Areas - City of El Segundo											
	<i>CNEL 65 dB and Above</i>				<i>CNEL 70 dB and Above</i>				<i>CNEL 75 dB and Above</i>			
	Land Use	Acres	Dwelling Units	Parcels	Population	Acres	Dwelling Units	Parcels	Population	Acres	Dwelling Units	Parcels
Single Family	52.5	344	345	899	2.7	16	16	36	0.0	0	0	0
Multi-Family	14.1	397	151	886	4.9	186	86	408	0.0	0	0	0
Mobile Home	0.0	0	0	0	0.0	0	0	0	0.0	0	0	0
Schools	0.0	0	0	0	0.0	0	0	0	0.0	0	0	0
Churches	0.7	0	2	0	0.0	0	0	0	0.0	0	0	0
Hospitals	0.0	0	0	0	0.0	0	0	0	0.0	0	0	0
Total Incompatible	67.3	741	498	1,785	7.6	202	102	445	0.0	0	0	0

Note: Parcels and dwelling units may not match for single family land uses due to subdivision.
Parcels for multifamily land uses reflect only the common area parcel, except for condominiums.

Report Date: 02/22/2023

LOS ANGELES INTERNATIONAL AIRPORT

Incompatible Land Use

Annual Noise Impact Accumulated by Noise Zone: CNEL 65, 70, and 75 +

4Q22	Total Cumulative Noise Impact Areas - City of Inglewood											
	<i>CNEL 65 dB and Above</i>				<i>CNEL 70 dB and Above</i>				<i>CNEL 75 dB and Above</i>			
	Land Use	Acres	Dwelling Units	Parcels	Population	Acres	Dwelling Units	Parcels	Population	Acres	Dwelling Units	Parcels
Single Family	57.3	397	405	1,617	0.3	2	2	8	0.0	0	0	0
Multi-Family	83.0	1,932	450	7,615	0.4	12	3	43	0.0	0	0	0
Mobile Home	0.6	0	2	0	0.0	0	0	0	0.0	0	0	0
Schools	0.0	0	0	0	0.0	0	0	0	0.0	0	0	0
Churches	8.0	6	13	13	2.1	0	1	0	0.0	0	0	0
Hospitals	0.0	0	0	0	0.0	0	0	0	0.0	0	0	0
Total Incompatible	148.9	2,335	870	9,245	2.8	14	6	51	0.0	0	0	0

Note: Parcels and dwelling units may not match for single family land uses due to subdivision.
Parcels for multifamily land uses reflect only the common area parcel, except for condominiums.

Report Date: 02/22/2023

LOS ANGELES INTERNATIONAL AIRPORT

Incompatible Land Use

Annual Noise Impact Accumulated by Noise Zone: CNEL 65, 70, and 75 +

4Q22	Total Cumulative Noise Impact Areas - Lennox											
	<i>CNEL 65 dB and Above</i>				<i>CNEL 70 dB and Above</i>				<i>CNEL 75 dB and Above</i>			
	Land Use	Acres	Dwelling Units	Parcels	Population	Acres	Dwelling Units	Parcels	Population	Acres	Dwelling Units	Parcels
Single Family	48.7	333	338	1,597	25.8	166	168	801	0.0	0	0	0
Multi-Family	44.7	667	262	3,160	24.8	317	127	1,565	0.0	0	0	0
Mobile Home	0.0	0	0	0	0.0	0	0	0	0.0	0	0	0
Schools	3.5	0	19	0	3.0	0	17	0	0.0	0	0	0
Churches	1.6	1	3	4	0.3	0	1	0	0.0	0	0	0
Hospitals	0.0	0	0	0	0.0	0	0	0	0.0	0	0	0
Total Incompatible	98.5	1,001	622	4,761	53.9	483	313	2,366	0.0	0	0	0

Note: Parcels and dwelling units may not match for single family land uses due to subdivision.
Parcels for multifamily land uses reflect only the common area parcel, except for condominiums.

Report Date: 02/22/2023

LOS ANGELES INTERNATIONAL AIRPORT

Incompatible Land Use

Annual Noise Impact Accumulated by Noise Zone: CNEL 65, 70, and 75 +

4Q22	Total Cumulative Noise Impact Areas - South and South East LA											
	<i>CNEL 65 dB and Above</i>				<i>CNEL 70 dB and Above</i>				<i>CNEL 75 dB and Above</i>			
	Land Use	Acres	Dwelling Units	Parcels	Population	Acres	Dwelling Units	Parcels	Population	Acres	Dwelling Units	Parcels
Single Family	0.0	0	0	0	0.0	0	0	0	0.0	0	0	0
Multi-Family	0.0	0	0	0	0.0	0	0	0	0.0	0	0	0
Mobile Home	0.0	0	0	0	0.0	0	0	0	0.0	0	0	0
Schools	0.0	0	0	0	0.0	0	0	0	0.0	0	0	0
Churches	1.4	0	3	0	0.0	0	0	0	0.0	0	0	0
Hospitals	0.0	0	0	0	0.0	0	0	0	0.0	0	0	0
Total Incompatible	1.4	0	3	0	0.0	0	0	0	0.0	0	0	0

Note: Parcels and dwelling units may not match for single family land uses due to subdivision.
Parcels for multifamily land uses reflect only the common area parcel, except for condominiums.

Report Date: 02/22/2023

LOS ANGELES INTERNATIONAL AIRPORT

Incompatible Land Use

Annual Noise Impact Accumulated by Noise Zone: CNEL 65, 70, and 75 +

4Q22	Total Cumulative Noise Impact Areas - Westchester/Playa Del Rey											
	<i>CNEL 65 dB and Above</i>				<i>CNEL 70 dB and Above</i>				<i>CNEL 75 dB and Above</i>			
	Land Use	Acres	Dwelling Units	Parcels	Population	Acres	Dwelling Units	Parcels	Population	Acres	Dwelling Units	Parcels
Single Family	0.0	0	0	0	0.0	0	0	0	0.0	0	0	0
Multi-Family	0.0	0	0	0	0.0	0	0	0	0.0	0	0	0
Mobile Home	0.0	0	0	0	0.0	0	0	0	0.0	0	0	0
Schools	0.0	0	0	0	0.0	0	0	0	0.0	0	0	0
Churches	1.3	1	1	2	0.0	0	0	0	0.0	0	0	0
Hospitals	0.0	0	0	0	0.0	0	0	0	0.0	0	0	0
Total Incompatible	1.3	1	1	2	0.0	0	0	0	0.0	0	0	0

Note: Parcels and dwelling units may not match for single family land uses due to subdivision.
Parcels for multifamily land uses reflect only the common area parcel, except for condominiums.

Report Date: 02/22/2023



October	PDR1	PDR2	ESG1	ESG2	ESG3	ESG5	DEL1	WCH2	WCH3	WCH5	WCH6	ING1	ING2	ING3	ING6	ING8	LNX1	LNX2	LNX3	LNX4	ATH2	SLA1	SLA3	SLA5	SLA7
1 Sat	66	60	63	66	59			58	58	72	61	58	64	65	69	59	75	60	62	64	65	63	62	63	59
2 Sun	66	60	63	67	59			57	58	73	62	59	65	66	68	60	74	60	61	64	68	64	61	63	64
3 Mon	66	61	63	67	59			60	59	70	62	60	65	66	68	59	73	60	60	63	66	63	60	63	63
4 Tue	66	60	63	67	59			59	57	73	61	58	64	65	67	58	73	61	59	63	64	62	60	62	62
5 Wed	66	59	63	67	60			57	56	72	61	58	64	65	67	58	73	61	59	63	65	63	59	65	63
6 Thu	67	61	63	67	61			58	56	72	62	58	65	66	68	62	74	60	60	66	66	63	61	63	63
7 Fri	68	60	62	67	61			57	56	72	62	58	65	65	68	61	74	60	60	64	65	63	60	63	63
8 Sat	65	59	62	66	59			57	54	71	60	63	63	64	67	57	73	58	64	63	64	62	60	62	62
9 Sun	64	59	62	67	59			57	54	72	62	58	65	65	69	59	73	59	60	63	65	63	63	62	63
10 Mon	66	61	62	66	59			58	56	72	62	58	65	65	68	59	73	63	60	63	65	66	60	63	63
11 Tue	66	59	63	67	60			57	55	72	61	58	64	65	67	59	73	59	60	63	66	64	60	62	63
12 Wed	67	60	63	67	60			59	60	72	61	58	65	66	67	59	74	61	61	63	65	63	61	63	63
13 Thu	66	59	64	67	61			57	55	72	61	58	64	65	68	59	74	60	60	64	65	63	61	63	63
14 Fri	67	60	64	67	60			58	56	72	61	58	64	65	68	60	74	62	61	64	65	62	61	63	63
15 Sat	66	59	62	67	59			57	56	72	61	59	64	65	67	59	73	61	61	63	65	63	60	63	63
16 Sun	67	61	63	67	60			60	62	72	62	59	66	66	69	60	75	61	62	66	66	64	61	64	64
17 Mon	66	61	65	67	60			60	59	72	62	58	65	65	68	60	74	62	62	64	65	63	60	63	64
18 Tue	66	60	66	67	60			60	63	71	62	58	64	65	68	58	72	59	59	62	65	62	61	62	62
19 Wed	65	58	63	67	63	64		63	62	71	61	57	63	64	67	58	73	61	60	63	64	62	60	63	62
20 Thu	67	61	62	66	61	62		61	60	73	62	59	65	65	68	59	74	61	61	64	65	64	62	64	64
21 Fri	68	61	64	66	60	53		59	66	72	62	58	65	66	72	61	75	65	62	65	66	64	62	64	65
22 Sat	67	60	63	66	58	54		59	64	72	61	59	66	65	68	60	74	61	62	64	66	64	61	65	64
23 Sun	67	61	63	67	60	55		61	61	72	62	59	65	66	68	60	73	59	60	63	65	64	61	64	64
24 Mon	65	60	62	67	60	60		62	61	72	62	58	64	65	67	58	73	61	60	63	65	63	60	63	63
25 Tue	66	60	62	67	62	61		59	60	71	61	58	64	65	67	59	73	60	60	64	64	63	60	63	67
26 Wed	67	61	63	67	60	56		62	62	72	63	62	65	65	67	59	73	61	62	63	65	64	61	63	63
27 Thu	67	61	63	67	63	62		63	62	73	62	59	65	66	68	59	73	60	62	63	65	64	61	63	63
28 Fri	67	60	63	67	60	55		64	63	72	62	59	65	66	68	60	75	60	63	64	65	63	60	64	63
29 Sat	65	58	64	68	63	64		62	61	71	60	57	63	64	67	58	73	58	60	63	64	62	60	63	63
30 Sun	67	60	62	67	60	58		64	64	72	61	58	64	65	67	60	73	59	60	63	64	63	60	62	62
31 Mon	66	60	63	67	60	58		62	59	71	61	57	64	64	66	58	72	62	60	62	64	63	62	62	62



November	PDR1	PDR2	ESG1	ESG2	ESG3	ESG5	DEL1	WCH2	WCH3	WCH5	WCH6	ING1	ING2	ING3	ING6	ING8	LNX1	LNX2	LNX3	LNX4	ATH2	SLA1	SLA3	SLA5	SLA7
1 Tue	67	61	66	67	60	57		60	59	72	61	58	65	65	68	59	73	60	60	63	64	64	60	63	63
2 Wed	68	62	65	68	61	57		59	59	71	60	59	64	65	70	61	76	62	62	66	66	63	62	64	65
3 Thu	67	62	64	67	64	61		56	53	72	63	59	64	66	69	61	75	61	61	66	67	64	63	65	65
4 Fri	67	61	63	67	62	62		60	60	73	62	59	66	66	71	62	75	62	64	65	67	64	62	65	65
5 Sat	67	61	--	67	62	62		60	59	72	61	58	64	65	69	60	75	62	62	65	67	63	62	65	65
6 Sun	68	62		69	63	61		62	60	72	61	58	65	66	67	59	73	59	60	63	65	65	60	63	64
7 Mon	67	63	60	66	59	52		64	62	74	64	60	66	67	68	60	73	62	61	63	65	65	60	63	63
8 Tue	68	62	65	68	62	58	55	63	63	73	66	64	67	67	70	64	74	67	66	67	66	65	63	65	64
9 Wed	68	62	64	68	63	61	58	61	61	73	63	60	66	67	69	63	74	65	63	64	67	65	62	65	65
10 Thu	67		64	67	64	63	57	64	61	72	62	59	65	66	67	60	73	59	62	63	65	64	61	63	63
11 Fri	65	60	63	67	63	64	59	61	59	71	60	57	64	65	67	58	71	59	63	62	63	63	59	63	62
12 Sat	66	60	63	67	62	62	56	58	60	72	61	59	64	65	68	59	72	61	61	63	65	63	61	63	63
13 Sun	67	61	64	68	64	62	59	62	60	72	62	58	65	66	68	60	73	60	61	64	65	64	61	63	63
14 Mon	67	62	64	67	63	63	54	62	64	72	62	59	65	65	67	58	73	63	63	63	64	64	59	62	62
15 Tue	66	59	64	67	63	63	60	64	65	70	60	57	63	65	66	58	72	61	60	63	63	62	59	63	62
16 Wed	65	58	62	65	61	62	58	64	64	70	60	57	62	63	66	56	71	61	63	61	62	61	59	61	61
17 Thu	66	60	63	66	63	62	58	63	64	72	61	58	64	65	67	58	72	59	62	63	64	62	59	62	62
18 Fri	67	61	62	68	64	63	54	65	61	72	62	59	65	66	68	60	73	61	61	63	65	64	60	64	63
19 Sat	63	55	61	67	63	64	59	57	55	70	58	56	62	65	64	55	70	61	65	60	62	61	60	61	60
20 Sun	63	57		64	60	60	57	52	50	70	58	55	62	63	66	63	71	55	58	61	63	61	58	61	61
21 Mon	63	58	--	65	62	63	61	56	55	70	59	57	62	63	68	55	71	59	56	61	64	61	57	61	60
22 Tue	65	59	--	66	62	61	57	63	61	71	61	57	63	64	66	58	73	60	60	63	63	61	59	62	61
23 Wed	66	60		67	63	63	58	64	62	72	62	59	64	65	67	58	73	61	62	63	64	63	59	62	62
24 Thu	63	57	61	65	61	61	58	63	59	69	59	57	61	61	63	54	70	58	62	66	60	59	56	59	61
25 Fri	63	57	61	65	60	60	55	60	56	71	60	58	63	64	65	57	72	61	60	62	63	62	58	63	61
26 Sat	66	60	62	66	61	61	50	64	56	72	61	58	64	66	68	59	72	60	60	63	65	63	59	63	63
27 Sun	68	62	63	67	62	61	53	65	61	73	63	60	66	67	69	60	75	61	62	65	67	65	62	65	64
28 Mon	67	62	64	67	62	57	53	61	54	72	61	58	65	65	67	59	73	62	60	64	65	64	60	63	67
29 Tue	68	62	63	67	61	59	53	64	62	72	62	60	65	67	70	62	76	62	63	66	67	64	63	66	66
30 Wed	68	62	64	67	60	55	54	64	59	72	61	59	65	66	68	59	73	60	61	63	65	64	61	63	63



December	PDR1	PDR2	ESG1	ESG2	ESG3	ESG5	DEL1	WCH2	WCH3	WCH5	WCH6	ING1	ING2	ING3	ING6	ING8	LNX1	LNX2	LNX3	LNX4	ATH2	SLA1	SLA3	SLA5	SLA7
1 Thu	68	62	65	67	61	55	54	62	59	72	62	59	65	66	68	59	73	60	62	64	65	64	61	64	64
2 Fri	68	62	63	67	60	58	60	61	61	73	67	64	67	68	71	65	74	68	67	67	66	64	63	64	64
3 Sat	66	60	64	68	62	60	53	59	62	73	62	59	65	66	68	61	73	62	60	63	66	64	60	63	63
4 Sun	67	61	63	67	61	58	44	62	59	73	62	58	65	67	68	59	74	60	60	64	65	64	60	63	63
5 Mon	67	62	65	68	62	59	47	64	61	72	62	59	65	66	67	59	73	63	61	63	65	64	61	63	63
6 Tue	67	61	65	68	62	64	53	62	59	72	62	59	64	66	68	61	73	60	60	63	67	63	60	64	64
7 Wed	67	61	65	67	62	62	55	61	59	71	61	58	64	66	68	60	73	60	60	63	65	64	61	64	64
8 Thu	67	61	65	69	63	64	59	60	59	72	61	59	65	66	69	60	72	60	61	63	65	64	61	64	63
9 Fri	68	62	64	68	64	62	66	66	65	73	63	60	66	68	69	62	74	61	63	64	66	65	62	65	65
10 Sat	67	61	64	67	62	60	55	62	61	72	61	61	65	65	67	59	72	59	61	63	65	64	60	64	64
11 Sun	67	63	65	68	62	58	54	63	62	73	63	61	66	67	70	61	75	63	62	65	66	65	62	64	64
12 Mon	67		65	68	63	62	56	61	59	72	62	59	65	66	68	61	73	60	60	63	65	64	63	63	64
13 Tue	67	--	65	69	64	63	58	60	58	71	61	58	64	66	67	60	73	60	64	63	65	64	62	63	64
14 Wed	67		65	70	64	64	57	63	60	72	61	58	64	66	67	60	73	61	62	63	65	64	61	63	63
15 Thu	67	62	64	68	63	63	55	61	62	72	62	59	64	65	68	59	73	60	62	64	65	64	62	64	64
16 Fri	66	59	64	68	64	64	60	60	56	71	64	58	63	65	66	60	71	58	61	62	65	63	60	63	62
17 Sat	65	58	64	67	63	63	58	54	54	70	59	57	63	65	68	57	71	62	58	62	63	62	59	62	63
18 Sun	66	60	63	67	62	63	55	62	63	72	62	60	65	67	68	58	73	59	60	63	65	64	60	63	62
19 Mon	66	62	65	68	64	65	58	62	61	71	61	58	64	65	67	59	73	60	61	63	65	63	60	63	64
20 Tue	67	60	64	68	64	64	59	62	63	72	62	59	65	66	68	60	73	60	62	64	66	64	61	64	64
21 Wed	67	60	65	68	66	67	63	65	64	72	61	59	64	65	68	59	73	61	63	63	65	63	60	65	63
22 Thu	68	61	64	68	64	63	60	66	64	73	63	62	65	66	68	59	73	60	63	64	65	64	61	64	64
23 Fri	67	62	64	68	63	62	55	63	63	72	61	58	65	65	68	60	74	60	62	64	65	63	60	64	64
24 Sat	65	59	63	67	64	65	62	62	60	70	59	62	62	63	67	57	74	60	61	62	66	61	59	63	63
25 Sun	64	57	61	66	63	64	62	58	57	70	58	56	61	63	65	56	72	60	61	62	64	60	63	62	61
26 Mon	66	60	62	66	62	63	60	63	64	72	61	60	63	64	66	58	68	60	64	63	64	62	60	63	62
27 Tue	67	62	64	68	62	59	54	64	61	72	62	59	65	66	69	60	73	61	60	64	66	67	61	64	64
28 Wed	67	61	64	68	62	58	46	63	59	72	61	58	65	66	68	59	74	60	61	63	66	66	61	64	64
29 Thu	68	63	64	68	61	56	47	60	55	72	61	58	65	66	68	59	73	60	60	63	65	64	61	64	64
30 Fri	68	62	63	68	62	56	52	62	60	73	62	59	65	67	69	60	74	60	60	64	65	65	61	64	64
31 Sat	69	64	63	66	61	53	47	65	65	73	64	60	67	67	69	61	76	64	64	65	69		62	64	68



Runway Utilization Report
Summary of Runway Use (Average)
 Los Angeles International Airport

Period : 10/01/2022 to 12/31/2022

Airline : ALL

Aircraft : ALL

Time Period	Percent Daily Operations Per Runway								Average Operations	Runway Complex		Runway Flow		In Board	Out Board	
	06L	06R	07L	07R	24L	24R	25L	25R		South	North	West	East			
Departures																
Total Hours																
24 Hours	0%	<1%	<1%	<1%	37%	<1%	4%	58%	738	63%	37%	99%	<1 %	96%	4%	
CNEL Hours																
0700 - 1900	0%	<1%	<1%	<1%	42%	<1%	5%	52%	494	58%	42%	99%	<1 %	95%	5%	
1900 - 2200	0%	0%	0%	0%	40%	0%	5%	55%	92	60%	40%	100%	0%	95%	5%	
2200 - 0700	0%	<1%	<1%	0%	17%	0%	2%	80%	152	82%	18%	99%	<1 %	98%	2%	
Contra Hours																
Midnight - 0630	0%	<1%	<1%	0%	5%	0%	3%	92%	78	95%	5%	99%	<1 %	97%	3%	
0630 - Midnight	0%	<1%	<1%	<1%	40%	<1%	5%	54%	660	59%	41%	99%	<1 %	95%	5%	
Arrivals																
Total Hours																
24 Hours	<1%	5%	<1%	<1%	<1%	43%	50%	<1%	738	51%	49%	94%	6%	6%	94%	
CNEL Hours																
0700 - 1900	<1%	0%	0%	<1%	<1%	47%	52%	<1%	482	53%	47%	99%	<1 %	<1%	99%	
1900 - 2200	0%	0%	0%	0%	<1%	47%	53%	<1%	131	53%	47%	100%	0%	<1%	99%	
2200 - 0700	2%	30%	<1%	<1%	<1%	27%	39%	<1%	126	41%	59%	67%	33%	31%	69%	
Contra Hours																
Midnight - 0630	6%	79%	1%	<1%	<1%	3%	8%	<1%	47	11%	89%	13%	87%	82%	18%	
0630 - Midnight	<1%	<1%	0%	<1%	<1%	46%	53%	<1%	692	53%	47%	99%	<1 %	<1 %	99%	

All values are rounded to the nearest whole number.



Runway Utilization Report
 Summary of Runway Flow (Average)
 Los Angeles International Airport

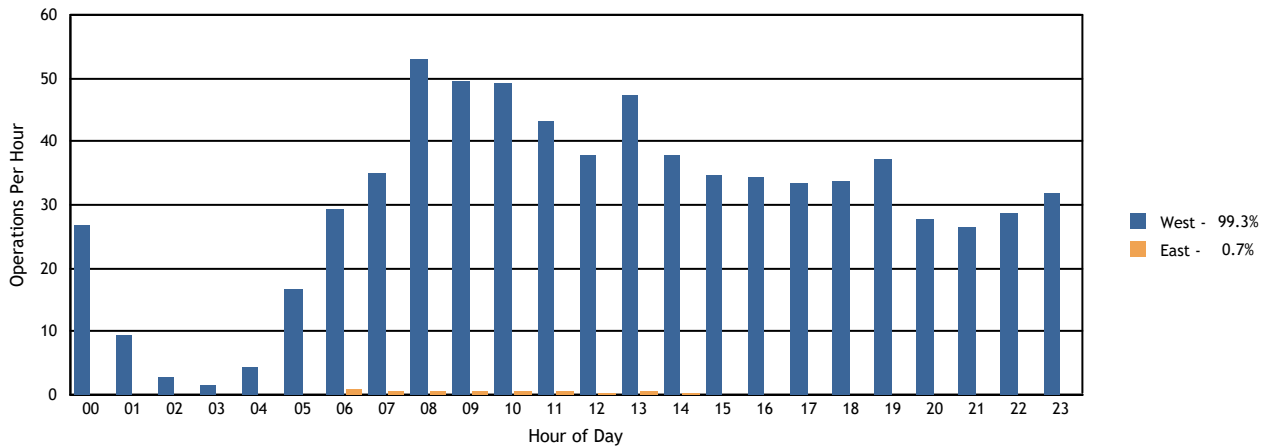
Period: 10/01/2022 to 12/31/2022

Airline : ALL
 Aircraft : ALL

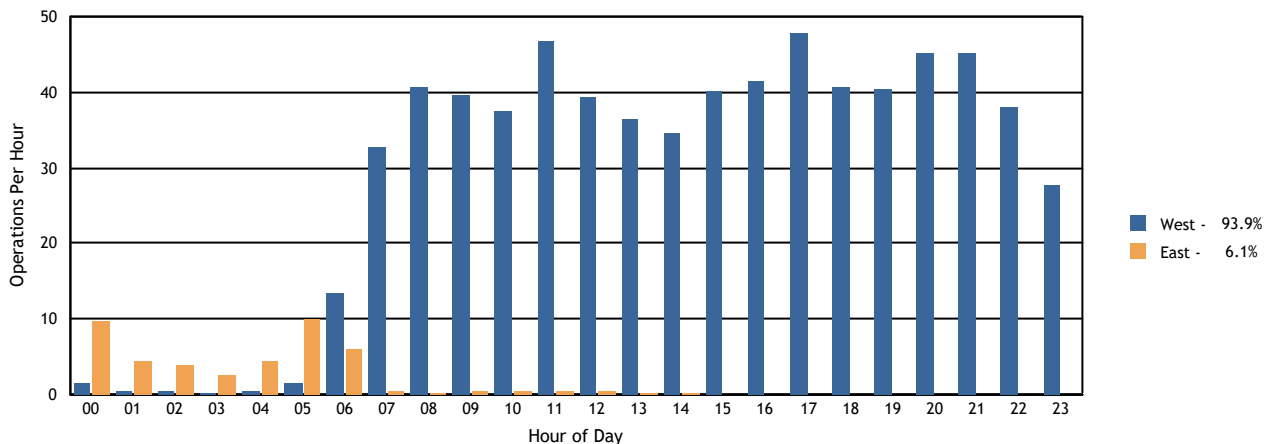
Time Period	Departures			Arrivals			Departures		Arrivals	
	West	East	Average	West	East	Average	West	East	West	East
Total Hours										
24 Hours	733	5	738	694	45	738	99%	<1%	94%	6%
CNEL Hours										
0700-1900	490	4	494	478	4	482	99%	<1%	99%	<1%
1900-2200	92	0	92	131	0	131	100%	0%	100%	0%
2200-0700	151	<1	152	84	41	126	99%	<1%	67%	33%
Contra Hours										
Midnight - 0630	78	<1	78	6	41	47	99%	<1%	13%	87%
0630 - Midnight	656	4	660	687	4	692	99%	<1%	99%	<1%

All percentages are rounded to the nearest whole number.

Departures Per Hour by Operational Direction



Arrivals Per Hour by Operational Direction



LAX Average Daily Runway Use By Aircraft Type - 24 Hours Fourth Quarter 2022

Arrivals (Average Daily Operations)								
Aircraft Type	06L	06R	07L	07R	24L	24R	25L	25R
A20N	0.05	0.36	0.00	0.13	0.00	3.32	18.37	0.12
A21N	0.33	2.37	0.01	0.13	0.05	11.15	22.50	0.24
A306	0.02	0.34	0.01	0.00	0.00	0.01	0.37	0.00
A310	0.00	0.00	0.00	0.00	0.00	0.00	0.01	0.00
A319	0.15	0.49	0.01	0.02	0.10	10.84	7.02	0.08
A320	0.23	1.57	0.00	0.22	0.12	17.54	38.99	0.35
A321	0.39	3.76	0.02	0.35	0.17	20.87	49.67	0.60
A332	0.08	0.93	0.00	0.00	0.01	3.12	2.39	0.01
A333	0.00	0.02	0.00	0.00	0.00	0.67	0.88	0.00
A343	0.00	0.00	0.00	0.00	0.00	0.10	0.15	0.00
A359	0.09	0.52	0.00	0.01	0.03	5.88	2.84	0.01
A35K	0.01	0.03	0.00	0.00	0.01	2.92	0.73	0.00
A388	0.03	0.18	0.00	0.00	0.04	2.55	0.00	0.00
ASTR	0.00	0.00	0.00	0.00	0.00	0.00	0.03	0.00
B350	0.03	0.05	0.00	0.00	0.04	1.59	0.90	0.05
B38M	0.14	0.45	0.00	0.03	0.15	14.13	5.24	0.03
B39M	0.08	0.87	0.00	0.03	0.02	4.29	10.47	0.10
B732	0.00	0.00	0.00	0.00	0.00	0.00	0.01	0.00
B734	0.00	0.01	0.00	0.00	0.00	0.00	0.03	0.00
B735	0.00	0.00	0.00	0.00	0.00	0.02	0.02	0.00
B737	0.25	1.08	0.00	0.08	0.24	33.86	5.15	0.08
B738	0.34	1.86	0.00	0.17	0.30	28.28	30.63	0.34
B739	0.17	1.14	0.01	0.14	0.22	28.48	26.74	0.33
B744	0.03	1.21	0.03	0.03	0.00	0.32	7.96	0.01
B748	0.09	1.16	0.00	0.04	0.00	1.36	2.92	0.00
B752	0.27	2.84	0.08	0.04	0.09	8.75	9.87	0.09
B753	0.02	0.26	0.00	0.00	0.03	2.16	4.21	0.07
B762	0.03	0.42	0.00	0.00	0.00	0.01	1.52	0.01
B763	0.46	4.99	0.30	0.16	0.03	7.82	13.46	0.18
B764	0.00	0.00	0.01	0.00	0.00	0.42	0.27	0.00
B772	0.05	0.88	0.00	0.00	0.00	2.33	6.41	0.01
B77L	0.24	3.42	0.04	0.15	0.02	0.34	8.75	0.05
B77W	0.10	0.17	0.00	0.03	0.09	16.45	5.85	0.05
B788	0.05	0.75	0.00	0.01	0.05	2.43	5.61	0.04
B789	0.27	2.28	0.00	0.02	0.10	6.03	7.15	0.07
B78X	0.01	0.08	0.00	0.00	0.00	1.66	2.68	0.03
BCS1	0.01	0.02	0.00	0.00	0.00	0.77	0.30	0.00
BCS3	0.05	0.01	0.00	0.03	0.02	6.85	3.08	0.04
BE20	0.01	0.01	0.00	0.00	0.00	0.12	0.11	0.00
BE30	0.00	0.00	0.00	0.01	0.00	0.00	0.00	0.00

Departures (Average Daily Operations)								
Aircraft Type	06L	06R	07L	07R	24L	24R	25L	25R
A20N	0.00	0.07	0.10	0.00	3.39	0.00	0.07	18.76
A21N	0.00	0.07	0.27	0.00	8.77	0.00	0.03	27.63
A306	0.00	0.00	0.00	0.00	0.00	0.00	0.23	0.52
A310	0.00	0.00	0.00	0.00	0.00	0.00	0.01	0.00
A319	0.00	0.07	0.09	0.00	11.84	0.02	0.07	6.68
A320	0.00	0.11	0.20	0.00	14.27	0.00	0.13	44.32
A321	0.00	0.27	0.32	0.00	13.85	0.01	0.22	61.27
A332	0.00	0.00	0.04	0.00	4.87	0.00	0.10	1.54
A333	0.00	0.00	0.00	0.00	0.85	0.00	0.01	0.74
A343	0.00	0.00	0.00	0.00	0.18	0.00	0.00	0.07
A359	0.00	0.00	0.02	0.00	5.42	0.00	0.00	3.97
A35K	0.00	0.00	0.00	0.00	1.75	0.00	0.00	1.96
A388	0.00	0.00	0.00	0.01	2.53	0.00	0.29	0.00
ASTR	0.00	0.00	0.00	0.00	0.00	0.00	0.02	0.01
B350	0.00	0.03	0.00	0.00	0.24	0.01	0.58	1.76
B38M	0.00	0.04	0.13	0.00	14.37	0.03	0.01	5.59
B39M	0.00	0.02	0.08	0.00	2.75	0.00	0.02	13.00
B732	0.00	0.00	0.00	0.00	0.00	0.00	0.00	0.01
B734	0.00	0.00	0.00	0.00	0.00	0.00	0.02	0.02
B735	0.00	0.00	0.00	0.00	0.00	0.00	0.00	0.04
B737	0.00	0.18	0.16	0.00	35.02	0.11	0.21	5.00
B738	0.00	0.22	0.28	0.00	28.04	0.05	0.30	33.07
B739	0.00	0.15	0.26	0.00	26.17	0.04	0.07	30.53
B744	0.00	0.04	0.05	0.00	0.05	0.00	2.27	7.16
B748	0.00	0.01	0.00	0.00	1.29	0.00	4.15	0.13
B752	0.00	0.10	0.10	0.00	11.16	0.03	0.68	10.01
B753	0.00	0.00	0.03	0.00	1.24	0.00	0.03	5.46
B762	0.00	0.00	0.00	0.00	0.00	0.00	0.46	1.54
B763	0.00	0.10	0.15	0.00	10.30	0.02	3.39	13.40
B764	0.00	0.00	0.00	0.00	0.50	0.00	0.02	0.21
B772	0.00	0.00	0.04	0.00	2.09	0.00	0.05	7.50
B77L	0.00	0.03	0.02	0.00	0.07	0.00	4.17	8.74
B77W	0.00	0.00	0.05	0.00	9.10	0.00	0.08	13.50
B788	0.00	0.00	0.02	0.00	3.96	0.02	0.01	4.95
B789	0.00	0.04	0.09	0.00	5.33	0.01	0.02	10.43
B78X	0.00	0.00	0.01	0.00	0.92	0.00	0.01	3.53
BCS1	0.00	0.00	0.00	0.00	1.01	0.00	0.00	0.09
BCS3	0.00	0.05	0.03	0.00	8.22	0.00	0.00	1.78
BE20	0.00	0.00	0.00	0.00	0.01	0.00	0.03	0.21
BE40	0.00	0.00	0.00	0.00	0.01	0.00	0.13	0.17

LAX Noise Management

Source: LAX ANOMS, based on available FAA radar flight track data.

note: Aircraft Type for certain military operations may not be available through our data source, therefore will not be included in the report.

LAX Average Daily Runway Use By Aircraft Type - 24 Hours Fourth Quarter 2022

Arrivals (Average Daily Operations)								
Aircraft Type	06L	06R	07L	07R	24L	24R	25L	25R
BE40	0.00	0.03	0.00	0.00	0.00	0.05	0.24	0.00
BE99	0.00	0.01	0.00	0.00	0.01	0.42	0.20	0.00
C150	0.00	0.00	0.00	0.00	0.00	0.00	0.01	0.00
C172	0.00	0.00	0.00	0.00	0.00	0.02	0.09	0.00
C208	0.00	0.01	0.00	0.02	0.00	0.00	2.12	0.16
C25A	0.00	0.00	0.00	0.00	0.00	0.13	0.16	0.01
C25B	0.00	0.00	0.00	0.00	0.00	0.23	0.61	0.00
C25C	0.00	0.00	0.00	0.00	0.00	0.00	0.02	0.00
C525	0.01	0.01	0.00	0.00	0.00	0.04	0.21	0.00
C550	0.00	0.00	0.00	0.00	0.00	0.03	0.01	0.00
C55B	0.00	0.00	0.00	0.00	0.00	0.00	0.01	0.00
C560	0.00	0.00	0.00	0.00	0.00	0.05	0.08	0.00
C56X	0.00	0.03	0.01	0.01	0.01	0.46	1.25	0.00
C650	0.00	0.01	0.00	0.00	0.00	0.00	0.07	0.00
C680	0.01	0.00	0.00	0.00	0.00	0.17	0.63	0.00
C68A	0.00	0.04	0.00	0.00	0.00	0.47	1.45	0.00
C700	0.00	0.01	0.00	0.00	0.00	0.12	0.50	0.00
C750	0.01	0.01	0.00	0.01	0.00	0.14	0.85	0.01
CL30	0.00	0.04	0.00	0.01	0.01	1.08	3.03	0.03
CL35	0.00	0.00	0.00	0.00	0.00	0.07	0.07	0.00
CL60	0.02	0.02	0.00	0.00	0.00	0.32	1.09	0.00
CRJ2	0.03	0.01	0.00	0.01	0.07	6.38	2.30	0.03
CRJ7	0.01	0.00	0.00	0.02	0.03	3.00	3.10	0.02
CRJ9	0.00	0.00	0.00	0.00	0.00	0.34	0.01	0.00
DC10	0.00	0.00	0.00	0.00	0.00	0.02	0.10	0.00
E120	0.00	0.00	0.00	0.00	0.00	0.00	0.01	0.00
E135	0.00	0.01	0.00	0.00	0.01	0.39	1.25	0.00
E145	0.01	0.00	0.00	0.00	0.00	0.03	0.26	0.00
E170	0.30	0.39	0.00	0.15	0.23	40.70	21.03	0.30
E190	0.00	0.00	0.00	0.00	0.00	0.04	0.36	0.00
E35L	0.00	0.01	0.00	0.00	0.00	0.03	0.27	0.00
E50P	0.00	0.00	0.00	0.00	0.00	0.03	0.08	0.00
E545	0.00	0.00	0.00	0.00	0.00	0.15	0.52	0.00
E550	0.00	0.00	0.00	0.00	0.00	0.02	0.27	0.00
E55P	0.01	0.02	0.00	0.00	0.01	0.59	1.43	0.02
E75L	0.01	0.04	0.00	0.02	0.04	10.68	3.96	0.07
E75S	0.02	0.01	0.00	0.01	0.00	0.87	0.25	0.00
F2TH	0.00	0.02	0.00	0.00	0.01	0.11	0.52	0.00
F900	0.00	0.03	0.00	0.01	0.00	0.11	0.50	0.00
FA20	0.00	0.00	0.00	0.00	0.00	0.00	0.01	0.00

Departures (Average Daily Operations)								
Aircraft Type	06L	06R	07L	07R	24L	24R	25L	25R
BE99	0.00	0.02	0.00	0.00	0.00	0.00	0.02	0.61
C150	0.00	0.00	0.00	0.00	0.00	0.00	0.00	0.01
C17	0.00	0.00	0.00	0.00	0.07	0.00	0.00	0.00
C172	0.00	0.00	0.00	0.00	0.00	0.00	0.03	0.07
C208	0.00	0.00	0.01	0.00	0.01	0.00	0.01	2.28
C25A	0.00	0.00	0.00	0.00	0.00	0.00	0.09	0.22
C25B	0.00	0.00	0.00	0.00	0.02	0.00	0.12	0.70
C25C	0.00	0.00	0.00	0.00	0.00	0.00	0.02	0.00
C525	0.00	0.00	0.01	0.00	0.00	0.00	0.01	0.25
C550	0.00	0.00	0.00	0.00	0.01	0.00	0.02	0.01
C55B	0.00	0.00	0.00	0.00	0.00	0.00	0.00	0.01
C560	0.00	0.00	0.00	0.00	0.00	0.00	0.07	0.07
C56X	0.00	0.00	0.00	0.00	0.05	0.00	0.64	1.08
C650	0.00	0.00	0.00	0.00	0.00	0.00	0.05	0.02
C680	0.00	0.01	0.00	0.00	0.01	0.00	0.33	0.42
C68A	0.00	0.00	0.01	0.00	0.08	0.00	0.80	1.07
C700	0.00	0.00	0.00	0.00	0.02	0.00	0.22	0.40
C750	0.00	0.00	0.01	0.00	0.01	0.00	0.37	0.64
CL30	0.00	0.01	0.00	0.01	0.15	0.00	1.75	2.38
CL35	0.00	0.00	0.00	0.00	0.00	0.00	0.01	0.05
CL60	0.00	0.00	0.00	0.00	0.03	0.00	0.49	0.89
CRJ2	0.00	0.02	0.01	0.00	2.62	0.01	0.22	5.98
CRJ7	0.00	0.01	0.00	0.00	0.95	0.01	0.00	5.21
CRJ9	0.00	0.00	0.00	0.00	0.05	0.00	0.00	0.29
DC10	0.00	0.00	0.00	0.00	0.00	0.00	0.04	0.09
E120	0.00	0.00	0.00	0.00	0.00	0.00	0.00	0.01
E135	0.00	0.01	0.00	0.00	0.00	0.00	0.52	1.12
E145	0.00	0.01	0.00	0.00	0.00	0.00	0.10	0.20
E170	0.00	0.17	0.17	0.00	22.05	0.05	0.08	40.53
E190	0.00	0.00	0.00	0.00	0.16	0.00	0.09	0.17
E35L	0.00	0.00	0.00	0.00	0.01	0.00	0.12	0.20
E50P	0.00	0.00	0.00	0.00	0.00	0.00	0.01	0.10
E545	0.00	0.00	0.00	0.00	0.02	0.00	0.32	0.35
E550	0.00	0.00	0.00	0.00	0.00	0.00	0.10	0.20
E55P	0.00	0.02	0.00	0.00	0.08	0.00	0.68	1.29
E75L	0.00	0.02	0.00	0.00	11.00	0.03	0.00	3.74
E75S	0.00	0.01	0.03	0.00	1.09	0.00	0.00	0.04
F2TH	0.00	0.00	0.00	0.00	0.03	0.00	0.20	0.43
F900	0.00	0.00	0.01	0.00	0.04	0.00	0.15	0.43
FA20	0.00	0.00	0.00	0.00	0.00	0.00	0.01	0.00

LAX Noise Management

Source: LAX ANOMS, based on available FAA radar flight track data.

note: Aircraft Type for certain military operations may not be available through our data source, therefore will not be included in the report.

LAX Average Daily Runway Use By Aircraft Type - 24 Hours Fourth Quarter 2022

Arrivals (Average Daily Operations)								
Aircraft Type	06L	06R	07L	07R	24L	24R	25L	25R
FA50	0.00	0.00	0.00	0.00	0.00	0.05	0.20	0.00
FA7X	0.00	0.03	0.00	0.01	0.00	0.08	0.48	0.00
FA8X	0.00	0.00	0.00	0.00	0.00	0.02	0.03	0.00
G150	0.00	0.00	0.00	0.00	0.01	0.02	0.12	0.00
G280	0.00	0.03	0.00	0.00	0.00	0.04	0.35	0.00
GA5C	0.00	0.00	0.00	0.00	0.00	0.07	0.08	0.00
GA6C	0.00	0.00	0.00	0.00	0.00	0.05	0.33	0.00
GALX	0.00	0.00	0.00	0.00	0.00	0.05	0.20	0.01
GL5T	0.00	0.01	0.01	0.00	0.00	0.15	0.34	0.00
GL7T	0.00	0.02	0.01	0.00	0.00	0.04	0.57	0.00
GLEX	0.01	0.01	0.00	0.01	0.00	0.59	1.34	0.01
GLF4	0.02	0.14	0.00	0.02	0.02	0.48	2.09	0.00
GLF5	0.01	0.07	0.00	0.00	0.00	0.39	1.80	0.00
GLF6	0.00	0.03	0.00	0.01	0.00	0.41	1.20	0.02
H25B	0.00	0.08	0.00	0.00	0.00	0.25	0.87	0.00
H25C	0.00	0.01	0.00	0.00	0.00	0.00	0.02	0.00
HA4T	0.00	0.00	0.00	0.00	0.00	0.01	0.00	0.00
HDJT	0.00	0.00	0.00	0.00	0.00	0.01	0.08	0.00
J328	0.00	0.00	0.00	0.00	0.00	0.02	0.07	0.00
LJ31	0.00	0.00	0.00	0.00	0.00	0.00	0.01	0.00
LJ35	0.00	0.01	0.00	0.00	0.00	0.00	0.11	0.00
LJ45	0.02	0.00	0.00	0.00	0.01	0.27	0.53	0.01
LJ60	0.00	0.00	0.00	0.00	0.00	0.04	0.24	0.00
LJ75	0.00	0.00	0.00	0.00	0.00	0.00	0.05	0.00
MD11	0.10	1.01	0.05	0.07	0.00	0.03	3.26	0.04
P180	0.00	0.00	0.00	0.00	0.00	0.01	0.01	0.00
P28A	0.00	0.00	0.00	0.00	0.00	0.02	0.00	0.00
PA46	0.00	0.00	0.00	0.00	0.00	0.02	0.00	0.00
PC12	0.01	0.12	0.00	0.00	0.01	0.98	0.48	0.04
PC24	0.00	0.00	0.00	0.00	0.00	0.03	0.01	0.00
PRM1	0.00	0.00	0.00	0.00	0.00	0.05	0.15	0.00
S22T	0.00	0.00	0.00	0.00	0.00	0.02	0.02	0.00
SR20	0.00	0.00	0.00	0.00	0.00	0.01	0.00	0.00
A124	0.00	0.00	0.00	0.00	0.00	0.00	0.01	0.00
A346	0.00	0.00	0.00	0.00	0.00	0.12	0.18	0.00
GLF3	0.00	0.00	0.00	0.00	0.00	0.00	0.01	0.00
SF50	0.00	0.00	0.00	0.00	0.00	0.02	0.04	0.00
LJ55	0.00	0.00	0.00	0.00	0.00	0.00	0.02	0.00
TBM7	0.00	0.00	0.00	0.00	0.00	0.01	0.02	0.00
BE35	0.00	0.00	0.00	0.00	0.00	0.03	0.00	0.00

Departures (Average Daily Operations)								
Aircraft Type	06L	06R	07L	07R	24L	24R	25L	25R
FA50	0.00	0.00	0.00	0.00	0.01	0.00	0.07	0.16
FA7X	0.00	0.01	0.00	0.00	0.01	0.00	0.20	0.39
FA8X	0.00	0.00	0.00	0.00	0.00	0.00	0.04	0.01
G150	0.00	0.00	0.00	0.00	0.00	0.00	0.05	0.09
G280	0.00	0.00	0.00	0.01	0.00	0.00	0.18	0.23
GA5C	0.00	0.00	0.00	0.00	0.00	0.00	0.05	0.07
GA6C	0.00	0.00	0.00	0.00	0.00	0.00	0.16	0.17
GALX	0.00	0.00	0.00	0.00	0.00	0.00	0.04	0.21
GL5T	0.00	0.00	0.00	0.00	0.03	0.00	0.18	0.29
GL7T	0.00	0.00	0.00	0.00	0.01	0.00	0.23	0.39
GLEX	0.00	0.01	0.01	0.01	0.05	0.00	0.52	1.38
GLF4	0.00	0.01	0.00	0.00	0.08	0.00	1.03	1.67
GLF5	0.00	0.00	0.00	0.00	0.08	0.00	0.77	1.34
GLF6	0.00	0.00	0.01	0.00	0.08	0.00	0.55	0.89
H25B	0.00	0.00	0.00	0.00	0.00	0.00	0.49	0.72
H25C	0.00	0.00	0.00	0.00	0.00	0.00	0.02	0.01
HA4T	0.00	0.00	0.00	0.00	0.00	0.00	0.01	0.00
HDJT	0.00	0.00	0.00	0.00	0.00	0.00	0.02	0.07
J328	0.00	0.00	0.00	0.00	0.00	0.00	0.02	0.05
LJ31	0.00	0.00	0.00	0.00	0.00	0.00	0.01	0.00
LJ35	0.00	0.00	0.00	0.00	0.00	0.00	0.02	0.10
LJ45	0.00	0.00	0.00	0.00	0.05	0.00	0.30	0.49
LJ60	0.00	0.00	0.00	0.00	0.00	0.00	0.04	0.21
LJ75	0.00	0.00	0.00	0.00	0.00	0.00	0.02	0.03
MD11	0.00	0.00	0.05	0.00	0.01	0.00	1.45	3.02
P180	0.00	0.00	0.00	0.00	0.00	0.00	0.00	0.02
P28A	0.00	0.00	0.00	0.00	0.01	0.00	0.00	0.01
PA46	0.00	0.00	0.00	0.00	0.00	0.00	0.00	0.02
PC12	0.00	0.01	0.00	0.00	0.32	0.01	0.02	1.27
PC24	0.00	0.00	0.00	0.00	0.00	0.00	0.02	0.02
PRM1	0.00	0.00	0.00	0.00	0.01	0.00	0.03	0.16
S22T	0.00	0.00	0.00	0.00	0.00	0.00	0.02	0.02
SR20	0.00	0.00	0.00	0.00	0.01	0.00	0.00	0.00
A124	0.00	0.00	0.00	0.00	0.00	0.00	0.01	0.00
A346	0.00	0.00	0.00	0.00	0.16	0.00	0.00	0.14
GLF3	0.00	0.00	0.00	0.00	0.00	0.00	0.00	0.01
SF50	0.00	0.00	0.00	0.00	0.00	0.00	0.00	0.07
LJ55	0.00	0.00	0.00	0.00	0.00	0.00	0.01	0.01
TBM7	0.00	0.00	0.00	0.00	0.00	0.00	0.01	0.02
BE35	0.00	0.00	0.00	0.00	0.00	0.00	0.00	0.03

LAX Noise Management

Source: LAX ANOMS, based on available FAA radar flight track data.

note: Aircraft Type for certain military operations may not be available through our data source, therefore will not be included in the report.

LAX Average Daily Runway Use By Aircraft Type - 24 Hours Fourth Quarter 2022

Arrivals (Average Daily Operations)								
Aircraft Type	06L	06R	07L	07R	24L	24R	25L	25R
MD81	0.00	0.00	0.00	0.00	0.00	0.00	0.02	0.00
DA42	0.00	0.00	0.00	0.00	0.00	0.01	0.00	0.00
A339	0.01	0.29	0.00	0.00	0.02	0.37	0.01	0.00
SW3	0.00	0.00	0.00	0.00	0.00	0.00	0.02	0.00
EPIC	0.00	0.00	0.00	0.00	0.00	0.00	0.03	0.00
WW24	0.00	0.00	0.00	0.00	0.00	0.01	0.00	0.00
C340	0.00	0.00	0.00	0.00	0.00	0.00	0.01	0.00
SW4	0.00	0.00	0.00	0.00	0.00	0.00	0.02	0.00
A318	0.00	0.00	0.00	0.00	0.00	0.00	0.01	0.00
H25A	0.00	0.00	0.00	0.00	0.00	0.00	0.03	0.00
CLBR	0.00	0.00	0.00	0.00	0.01	0.00	0.01	0.00
PA28	0.00	0.00	0.00	0.00	0.00	0.01	0.00	0.00

Departures (Average Daily Operations)								
Aircraft Type	06L	06R	07L	07R	24L	24R	25L	25R
MD81	0.00	0.00	0.00	0.00	0.00	0.00	0.01	0.01
DA42	0.00	0.00	0.00	0.00	0.00	0.00	0.00	0.01
A339	0.00	0.00	0.02	0.00	0.42	0.00	0.04	0.22
SW3	0.00	0.00	0.00	0.00	0.00	0.00	0.01	0.01
EPIC	0.00	0.00	0.00	0.00	0.00	0.00	0.01	0.02
WW24	0.00	0.00	0.00	0.00	0.00	0.00	0.01	0.00
C340	0.00	0.00	0.00	0.00	0.00	0.00	0.00	0.01
SW4	0.00	0.00	0.00	0.00	0.00	0.00	0.00	0.02
A318	0.00	0.00	0.00	0.00	0.01	0.00	0.00	0.00
H25A	0.00	0.00	0.01	0.00	0.00	0.00	0.01	0.01
CLBR	0.00	0.00	0.00	0.00	0.00	0.00	0.00	0.02
C5M	0.00	0.00	0.00	0.00	0.03	0.00	0.00	0.00
SLG2	0.00	0.00	0.00	0.00	0.00	0.00	0.00	0.01

LAX Noise Management

Source: LAX ANOMS, based on available FAA radar flight track data.

note: Aircraft Type for certain military operations may not be available through our data source, therefore will not be included in the report.

**LAX Average Daily Runway Use By Aircraft Type - Night Time (10pm - 7am)
Fourth Quarter 2022**

Arrivals (Average Daily Operations)								
Aircraft Type	06L	06R	07L	07R	24L	24R	25L	25R
A20N	0.02	0.36	0.00	0.02	0.00	0.39	3.80	0.04
A21N	0.24	2.37	0.01	0.02	0.03	3.26	4.01	0.02
A306	0.02	0.34	0.01	0.00	0.00	0.00	0.05	0.00
A319	0.05	0.49	0.01	0.00	0.00	0.76	1.80	0.01
A320	0.16	1.57	0.00	0.01	0.00	1.70	7.17	0.03
A321	0.30	3.76	0.02	0.02	0.05	3.22	8.23	0.09
A332	0.08	0.93	0.00	0.00	0.01	0.76	0.37	0.00
A333	0.00	0.02	0.00	0.00	0.00	0.07	0.14	0.00
A359	0.07	0.52	0.00	0.00	0.00	0.08	0.08	0.00
A35K	0.00	0.03	0.00	0.00	0.00	0.08	0.02	0.00
A388	0.01	0.18	0.00	0.00	0.00	0.11	0.00	0.00
B350	0.01	0.05	0.00	0.00	0.00	0.18	0.13	0.01
B38M	0.04	0.45	0.00	0.00	0.01	2.27	0.48	0.00
B39M	0.05	0.87	0.00	0.00	0.01	0.46	2.23	0.01
B737	0.12	1.08	0.00	0.00	0.07	6.45	0.61	0.01
B738	0.24	1.86	0.00	0.01	0.04	3.07	2.91	0.04
B739	0.04	1.14	0.01	0.00	0.01	2.92	2.57	0.01
B744	0.02	1.21	0.03	0.02	0.00	0.05	1.34	0.00
B748	0.07	1.16	0.00	0.04	0.00	0.07	0.60	0.00
B752	0.22	2.84	0.08	0.00	0.05	1.80	1.17	0.04
B753	0.02	0.26	0.00	0.00	0.00	0.26	0.80	0.01
B762	0.03	0.42	0.00	0.00	0.00	0.01	0.66	0.01
B763	0.46	4.99	0.30	0.09	0.00	0.96	3.60	0.15
B764	0.00	0.00	0.01	0.00	0.00	0.08	0.03	0.00
B772	0.04	0.88	0.00	0.00	0.00	0.21	0.65	0.00
B77L	0.23	3.42	0.04	0.10	0.01	0.11	1.18	0.04
B77W	0.01	0.17	0.00	0.00	0.00	0.03	0.04	0.00
B788	0.05	0.75	0.00	0.00	0.00	0.28	0.41	0.00
B789	0.15	2.28	0.00	0.00	0.02	0.22	0.83	0.04
B78X	0.00	0.08	0.00	0.00	0.00	0.05	0.25	0.00
BCS1	0.01	0.02	0.00	0.00	0.00	0.10	0.02	0.00
BCS3	0.00	0.01	0.00	0.01	0.00	0.71	0.14	0.00
BE20	0.01	0.01	0.00	0.00	0.00	0.00	0.01	0.00
BE30	0.00	0.00	0.00	0.01	0.00	0.00	0.00	0.00
BE40	0.00	0.03	0.00	0.00	0.00	0.00	0.01	0.00
BE99	0.00	0.01	0.00	0.00	0.01	0.42	0.20	0.00
C172	0.00	0.00	0.00	0.00	0.00	0.00	0.01	0.00
C208	0.00	0.01	0.00	0.00	0.00	0.00	0.03	0.00
C25B	0.00	0.00	0.00	0.00	0.00	0.01	0.03	0.00
C525	0.00	0.01	0.00	0.00	0.00	0.00	0.01	0.00

Departures (Average Daily Operations)								
Aircraft Type	06L	06R	07L	07R	24L	24R	25L	25R
A20N	0.00	0.01	0.01	0.00	1.24	0.00	0.01	4.67
A21N	0.00	0.03	0.03	0.00	0.52	0.00	0.01	6.61
A306	0.00	0.00	0.00	0.00	0.00	0.00	0.01	0.29
A319	0.00	0.00	0.03	0.00	1.45	0.00	0.00	1.71
A320	0.00	0.02	0.02	0.00	1.40	0.00	0.03	10.37
A321	0.00	0.07	0.09	0.00	2.45	0.00	0.07	18.38
A332	0.00	0.00	0.00	0.00	0.07	0.00	0.00	0.35
A333	0.00	0.00	0.00	0.00	0.12	0.00	0.00	0.30
A359	0.00	0.00	0.01	0.00	1.40	0.00	0.00	2.63
A35K	0.00	0.00	0.00	0.00	0.36	0.00	0.00	0.57
A388	0.00	0.00	0.00	0.00	0.75	0.00	0.24	0.00
B350	0.00	0.02	0.00	0.00	0.02	0.00	0.00	0.65
B38M	0.00	0.00	0.02	0.00	0.73	0.00	0.01	1.15
B39M	0.00	0.01	0.03	0.00	0.59	0.00	0.02	5.30
B735	0.00	0.00	0.00	0.00	0.00	0.00	0.00	0.02
B737	0.00	0.03	0.05	0.00	3.79	0.00	0.08	4.12
B738	0.00	0.07	0.04	0.00	1.09	0.00	0.09	8.35
B739	0.00	0.00	0.04	0.00	2.29	0.00	0.02	7.62
B744	0.00	0.02	0.04	0.00	0.00	0.00	0.12	4.87
B748	0.00	0.00	0.00	0.00	0.00	0.00	1.68	0.13
B752	0.00	0.00	0.04	0.00	1.54	0.00	0.01	3.62
B753	0.00	0.00	0.00	0.00	0.00	0.00	0.01	1.27
B762	0.00	0.00	0.00	0.00	0.00	0.00	0.04	1.23
B763	0.00	0.02	0.08	0.00	2.02	0.00	0.26	9.30
B764	0.00	0.00	0.00	0.00	0.01	0.00	0.00	0.15
B772	0.00	0.00	0.00	0.00	0.34	0.00	0.02	2.52
B77L	0.00	0.01	0.00	0.00	0.00	0.00	0.13	3.38
B77W	0.00	0.00	0.00	0.00	0.77	0.00	0.03	5.82
B788	0.00	0.00	0.00	0.00	0.27	0.00	0.00	1.55
B789	0.00	0.00	0.00	0.00	1.08	0.00	0.00	3.42
B78X	0.00	0.00	0.00	0.00	0.00	0.00	0.00	0.89
BCS1	0.00	0.00	0.00	0.00	0.08	0.00	0.00	0.01
BCS3	0.00	0.00	0.01	0.00	0.91	0.00	0.00	0.03
BE20	0.00	0.00	0.00	0.00	0.00	0.00	0.01	0.01
BE40	0.00	0.00	0.00	0.00	0.00	0.00	0.00	0.05
BE99	0.00	0.02	0.00	0.00	0.00	0.00	0.02	0.61
C172	0.00	0.00	0.00	0.00	0.00	0.00	0.02	0.04
C208	0.00	0.00	0.00	0.00	0.00	0.00	0.00	0.05
C25A	0.00	0.00	0.00	0.00	0.00	0.00	0.00	0.03
C25B	0.00	0.00	0.00	0.00	0.01	0.00	0.00	0.04

LAX Noise Management

Source: LAX ANOMS, based on available FAA radar flight track data.

note: Aircraft Type for certain military operations may not be available through our data source, therefore will not be included in the report.

LAX Average Daily Runway Use By Aircraft Type - Night Time (10pm - 7am) Fourth Quarter 2022

Arrivals (Average Daily Operations)								
Aircraft Type	06L	06R	07L	07R	24L	24R	25L	25R
C56X	0.00	0.03	0.01	0.00	0.00	0.00	0.01	0.00
C68A	0.00	0.04	0.00	0.00	0.00	0.02	0.03	0.00
C700	0.00	0.01	0.00	0.00	0.00	0.01	0.01	0.00
C750	0.00	0.01	0.00	0.00	0.00	0.00	0.03	0.00
CL30	0.00	0.04	0.00	0.00	0.00	0.03	0.11	0.00
CL35	0.00	0.00	0.00	0.00	0.00	0.02	0.00	0.00
CL60	0.00	0.02	0.00	0.00	0.00	0.01	0.02	0.00
CRJ2	0.00	0.01	0.00	0.00	0.00	0.42	0.13	0.00
CRJ7	0.00	0.00	0.00	0.01	0.00	0.23	0.36	0.00
CRJ9	0.00	0.00	0.00	0.00	0.00	0.01	0.00	0.00
DC10	0.00	0.00	0.00	0.00	0.00	0.00	0.01	0.00
E135	0.00	0.01	0.00	0.00	0.00	0.01	0.02	0.00
E170	0.01	0.39	0.00	0.02	0.00	1.17	0.58	0.01
E190	0.00	0.00	0.00	0.00	0.00	0.00	0.01	0.00
E35L	0.00	0.01	0.00	0.00	0.00	0.00	0.02	0.00
E545	0.00	0.00	0.00	0.00	0.00	0.00	0.02	0.00
E55P	0.00	0.02	0.00	0.00	0.00	0.00	0.07	0.00
E75L	0.00	0.04	0.00	0.00	0.00	0.33	0.13	0.00
E75S	0.00	0.01	0.00	0.00	0.00	0.02	0.02	0.00
F2TH	0.00	0.02	0.00	0.00	0.00	0.00	0.01	0.00
F900	0.00	0.03	0.00	0.00	0.00	0.00	0.02	0.00
FA7X	0.00	0.03	0.00	0.00	0.00	0.01	0.00	0.00
G150	0.00	0.00	0.00	0.00	0.00	0.00	0.01	0.00
G280	0.00	0.03	0.00	0.00	0.00	0.00	0.01	0.00
GA6C	0.00	0.00	0.00	0.00	0.00	0.01	0.03	0.00
GALX	0.00	0.00	0.00	0.00	0.00	0.00	0.01	0.00
GL5T	0.00	0.01	0.01	0.00	0.00	0.00	0.02	0.00
GL7T	0.00	0.02	0.01	0.00	0.00	0.00	0.01	0.00
GLEX	0.00	0.01	0.00	0.01	0.00	0.01	0.09	0.01
GLF4	0.02	0.14	0.00	0.01	0.00	0.01	0.09	0.00
GLF5	0.01	0.07	0.00	0.00	0.00	0.02	0.21	0.00
GLF6	0.00	0.03	0.00	0.00	0.00	0.00	0.04	0.00
H25B	0.00	0.08	0.00	0.00	0.00	0.00	0.05	0.00
J328	0.00	0.00	0.00	0.00	0.00	0.00	0.02	0.00
LJ35	0.00	0.01	0.00	0.00	0.00	0.00	0.00	0.00
LJ45	0.02	0.00	0.00	0.00	0.00	0.00	0.01	0.01
MD11	0.10	1.01	0.05	0.05	0.00	0.00	0.41	0.04
PC12	0.01	0.12	0.00	0.00	0.00	0.23	0.08	0.01
A124	0.00	0.00	0.00	0.00	0.00	0.00	0.01	0.00
B734	0.00	0.01	0.00	0.00	0.00	0.00	0.00	0.00
FA50	0.00	0.00	0.00	0.00	0.00	0.00	0.01	0.00

Departures (Average Daily Operations)								
Aircraft Type	06L	06R	07L	07R	24L	24R	25L	25R
C525	0.00	0.00	0.00	0.00	0.00	0.00	0.00	0.01
C56X	0.00	0.00	0.00	0.00	0.00	0.00	0.00	0.08
C680	0.00	0.00	0.00	0.00	0.00	0.00	0.00	0.02
C68A	0.00	0.00	0.00	0.00	0.00	0.00	0.00	0.16
C700	0.00	0.00	0.00	0.00	0.00	0.00	0.00	0.05
C750	0.00	0.00	0.00	0.00	0.00	0.00	0.00	0.10
CL30	0.00	0.01	0.00	0.00	0.00	0.00	0.00	0.22
CL60	0.00	0.00	0.00	0.00	0.00	0.00	0.00	0.17
CRJ2	0.00	0.00	0.00	0.00	0.08	0.00	0.00	1.08
CRJ7	0.00	0.00	0.00	0.00	0.03	0.00	0.00	0.47
DC10	0.00	0.00	0.00	0.00	0.00	0.00	0.00	0.05
E135	0.00	0.00	0.00	0.00	0.00	0.00	0.00	0.07
E145	0.00	0.00	0.00	0.00	0.00	0.00	0.00	0.01
E170	0.00	0.01	0.00	0.00	0.73	0.00	0.00	2.15
E190	0.00	0.00	0.00	0.00	0.00	0.00	0.00	0.01
E35L	0.00	0.00	0.00	0.00	0.00	0.00	0.00	0.01
E545	0.00	0.00	0.00	0.00	0.00	0.00	0.00	0.02
E550	0.00	0.00	0.00	0.00	0.00	0.00	0.00	0.02
E55P	0.00	0.00	0.00	0.00	0.00	0.00	0.01	0.05
E75L	0.00	0.00	0.00	0.00	0.41	0.00	0.00	0.68
E75S	0.00	0.00	0.00	0.00	0.04	0.00	0.00	0.00
F2TH	0.00	0.00	0.00	0.00	0.00	0.00	0.00	0.05
F900	0.00	0.00	0.00	0.00	0.00	0.00	0.00	0.05
FA7X	0.00	0.01	0.00	0.00	0.00	0.00	0.01	0.09
G150	0.00	0.00	0.00	0.00	0.00	0.00	0.00	0.01
G280	0.00	0.00	0.00	0.00	0.00	0.00	0.00	0.04
GA5C	0.00	0.00	0.00	0.00	0.00	0.00	0.00	0.01
GA6C	0.00	0.00	0.00	0.00	0.00	0.00	0.00	0.02
GALX	0.00	0.00	0.00	0.00	0.00	0.00	0.00	0.02
GL5T	0.00	0.00	0.00	0.00	0.00	0.00	0.00	0.07
GL7T	0.00	0.00	0.00	0.00	0.00	0.00	0.00	0.09
GLEX	0.00	0.00	0.01	0.00	0.00	0.00	0.00	0.33
GLF4	0.00	0.00	0.00	0.00	0.00	0.00	0.00	0.35
GLF5	0.00	0.00	0.00	0.00	0.01	0.00	0.00	0.21
GLF6	0.00	0.00	0.00	0.00	0.00	0.00	0.01	0.11
H25B	0.00	0.00	0.00	0.00	0.00	0.00	0.00	0.13
J328	0.00	0.00	0.00	0.00	0.00	0.00	0.00	0.01
LJ45	0.00	0.00	0.00	0.00	0.00	0.00	0.01	0.03
MD11	0.00	0.00	0.01	0.00	0.00	0.00	0.04	1.88
PC12	0.00	0.00	0.00	0.00	0.01	0.00	0.00	0.48
A124	0.00	0.00	0.00	0.00	0.00	0.00	0.01	0.00

LAX Noise Management

Source: LAX ANOMS, based on available FAA radar flight track data.

note: Aircraft Type for certain military operations may not be available through our data source, therefore will not be included in the report.

**LAX Average Daily Runway Use By Aircraft Type - Night Time (10pm - 7am)
Fourth Quarter 2022**

Arrivals (Average Daily Operations)								
Aircraft Type	06L	06R	07L	07R	24L	24R	25L	25R
E50P	0.00	0.00	0.00	0.00	0.00	0.00	0.02	0.00
C650	0.00	0.01	0.00	0.00	0.00	0.00	0.00	0.00
H25C	0.00	0.01	0.00	0.00	0.00	0.00	0.00	0.00
PC24	0.00	0.00	0.00	0.00	0.00	0.00	0.01	0.00
A339	0.01	0.29	0.00	0.00	0.02	0.05	0.00	0.00
H25A	0.00	0.00	0.00	0.00	0.00	0.00	0.02	0.00

Departures (Average Daily Operations)								
Aircraft Type	06L	06R	07L	07R	24L	24R	25L	25R
B734	0.00	0.00	0.00	0.00	0.00	0.00	0.00	0.02
FA50	0.00	0.00	0.00	0.00	0.00	0.00	0.00	0.01
E50P	0.00	0.00	0.00	0.00	0.00	0.00	0.00	0.03
A339	0.00	0.00	0.00	0.00	0.01	0.00	0.00	0.00
SF50	0.00	0.00	0.00	0.00	0.00	0.00	0.00	0.02
C150	0.00	0.00	0.00	0.00	0.00	0.00	0.00	0.01
C5M	0.00	0.00	0.00	0.00	0.03	0.00	0.00	0.00
MD81	0.00	0.00	0.00	0.00	0.00	0.00	0.00	0.01
SW4	0.00	0.00	0.00	0.00	0.00	0.00	0.00	0.02
TBM7	0.00	0.00	0.00	0.00	0.00	0.00	0.00	0.01
GA7C	0.00	0.00	0.00	0.00	0.00	0.00	0.00	0.01

LAX Noise Management

Source: LAX ANOMS, based on available FAA radar flight track data.

note: Aircraft Type for certain military operations may not be available through our data source, therefore will not be included in the report.

LAX Average Daily Runway Use By Aircraft Group - 24 Hours Fourth Quarter 2022

Arrivals (Average Daily Operations)								
Aircraft Group	06L	06R	07L	07R	24L	24R	25L	25R
Small Jet	0.52	1.22	0.03	0.32	0.47	69.98	57.40	0.55
Small Narrow-Body Jet	1.48	7.85	0.02	0.86	1.17	148.42	146.45	1.46
Large Narrow-Body Jet	1.01	9.23	0.11	0.52	0.35	42.93	86.25	0.99
Small Wide-Body Jet	0.51	5.75	0.33	0.16	0.03	8.26	15.63	0.20
Large Wide-Body Jet	1.16	12.96	0.13	0.37	0.38	46.71	57.89	0.34
Non-Jet	0.05	0.21	0.00	0.03	0.08	3.28	4.08	0.26
Military*	0.00	0.00	0.00	0.00	0.00	0.00	0.00	0.00

Departures (Average Daily Operations)								
Aircraft Group	06L	06R	07L	07R	24L	24R	25L	25R
Small Jet	0.00	0.34	0.29	0.03	38.75	0.11	12.79	77.75
Small Narrow-Body Jet	0.00	0.91	1.33	0.00	145.26	0.26	0.99	159.08
Large Narrow-Body Jet	0.00	0.43	0.72	0.00	35.02	0.04	0.97	104.37
Small Wide-Body Jet	0.00	0.10	0.15	0.00	10.80	0.02	4.11	15.67
Large Wide-Body Jet	0.00	0.13	0.43	0.01	39.01	0.03	12.72	67.68
Non-Jet	0.00	0.07	0.01	0.00	0.60	0.02	0.75	6.46
Military*	0.00	0.00	0.00	0.00	0.09	0.00	0.00	0.00

LAX Noise Management

Source: LAX ANOMS, based on available FAA radar flight track data.

* Aircraft Type for certain military operations may not be available through our data source, therefore will not be included in the report.

**LAX Average Daily Runway Use By Aircraft Group - Night Time (10pm - 7am)
Fourth Quarter 2022**

Arrivals (Average Daily Operations)								
Aircraft Group	06L	06R	07L	07R	24L	24R	25L	25R
Small Jet	0.07	1.22	0.03	0.05	0.00	2.37	2.33	0.03
Small Narrow-Body Jet	0.75	7.85	0.02	0.05	0.14	18.82	21.75	0.16
Large Narrow-Body Jet	0.78	9.23	0.11	0.04	0.14	8.54	14.22	0.16
Small Wide-Body Jet	0.51	5.75	0.33	0.09	0.00	1.04	4.35	0.16
Large Wide-Body Jet	0.84	12.96	0.13	0.22	0.07	2.16	6.35	0.13
Non-Jet	0.03	0.21	0.00	0.01	0.01	0.86	0.49	0.02
Military*	0.00	0.00	0.00	0.00	0.00	0.00	0.00	0.00

Departures (Average Daily Operations)								
Aircraft Group	06L	06R	07L	07R	24L	24R	25L	25R
Small Jet	0.00	0.03	0.01	0.00	1.32	0.00	0.04	7.20
Small Narrow-Body Jet	0.00	0.14	0.27	0.00	13.57	0.00	0.26	43.40
Large Narrow-Body Jet	0.00	0.10	0.16	0.00	4.51	0.00	0.10	29.88
Small Wide-Body Jet	0.00	0.02	0.08	0.00	2.03	0.00	0.32	10.98
Large Wide-Body Jet	0.00	0.03	0.07	0.00	5.16	0.00	2.28	28.37
Non-Jet	0.00	0.04	0.00	0.00	0.03	0.00	0.05	1.89
Military*	0.00	0.00	0.00	0.00	0.00	0.00	0.00	0.00

LAX Noise Management

Source: LAX ANOMS, based on available FAA radar flight track data.

* Aircraft Type for certain military operations may not be available through our data source, therefore will not be included in the report.

Summary of Actions Taken by LAWA to Comply with Conditions to the Current Noise Variance for Los Angeles International Airport

Fourth Quarter 2022

The Los Angeles World Airports (LAWA) continuously works to operate an airport that maintains the highest possible environmental quality of life for surrounding communities. To that end, LAWA continues to take the following actions:

- LAWA continues to implement its Aircraft Noise Mitigation Program (ANMP), designed to fund the mitigation of all incompatible land uses within the noise impact boundary as defined in the State Noise Standards. LAWA updates the ANMP report periodically to ensure that it reasonably represents the mitigation and funding programs that are in place.
- With each second quarter Quarterly Report, LAWA submits an annual update of the ANMP. This update includes the number of dwellings acoustically insulated, the cost of the program, the anticipated funding availability, and the anticipated completion date of the project.
- LAWA continues to monitor and enforce, as appropriate, all of its informal noise abatement procedures in place at LAX, including but not limited to the early turn program, preferential runway use procedures and over ocean operations procedures, as well as the formal maintenance run-up restrictions.
- LAWA continues to work with the Federal Aviation Administration and pilots to improve compliance with its “no turns before the shoreline” policy.
- LAWA will update the April 11, 2014 Report on Implementation of the Preferential Runway Use Policy at LAX within the specified period to reevaluate conditions related to compliance, implementation and possible improvements.
- LAWA continues to provide the information to the County of Los Angeles needed to prepare Quarterly Reports of Noise Monitoring. Included with the noise monitoring information forwarded each quarter is this brief report regarding the implementation of each of the conditions to the Variance.

- LAWA completed an upgrade of the Noise and Operations Monitoring System for LAX in 2022. LAWA received Caltrans certification of the upgraded airport noise and operations monitoring system in October 2022 and provided the County of Los Angeles with a copy of all submitted documentation and Caltrans certification at that time. The County continues to review and audit the data LAWA submits in each Quarterly Report.
- LAWA continues to include tabular data and graphical illustrations with each Quarterly Report describing and comparing the level and type of usage for each runway at LAX during the quarter. In addition, LAWA is including tabular data describing the daily average number of arrivals and departures by aircraft type and model on each runway during all hours and during nighttime hours from 10 pm to 7 am. LAWA is also now providing the runway usage data to the FAA for their use in monitoring air traffic runway usage.
- LAWA continues to monitor and enforce its maintenance run-up curfew (2300-0600). When applicable, LAWA will include with each Quarterly Report, information regarding monitoring and enforcement activities undertaken during the quarter. There were no enforcement actions reported during the fourth quarter 2022.
- LAWA continues to provide the LAX Noise Comment Phone Line with an option for callers to have a live answer as available, and continues to retrieve any complaint messages and provide appropriate responses in a timely manner.