

California State Airport Noise Standards Quarterly Report

First Quarter 2019



LAX

*Los Angeles
World Airports*

Los Angeles World Airports
Los Angeles International Airport

May 1, 2019

TABLE OF CONTENTS

California State Airport Noise Standards Quarterly Report

1. Division of Aeronautics Form 617
2. Incompatible Land Use Data
3. Daily Aircraft CNEL Data
4. Runway Utilization Report
 - Summary of Runway Use
 - Summary of Runway Flow
5. Average Daily Runway Use by Aircraft Type
 - 24 Hour Average
 - Night-time Average (10pm – 7am)
6. Summary of Actions

Attachment

Noise contour map

**SUMMARY OF STATISTICAL INFORMATION
FOR
CALIFORNIA DEPARTMENT OF TRANSPORTATION**

Los Angeles International Airport
First Quarter 2019

1. Size of Noise Impact Area as defined in the Noise Standards (California Code of Regulations, Title 21, Chapter 2.5, Subchapter 6):

598.6 Acres

2. Estimated number of dwelling units included in the Noise Impact Area as defined in the Noise Standards:

7,678

3. Estimated number of people residing within the Noise Impact Area as defined in the Noise Standards:

28,128

4. Identification of aircraft type having highest takeoff noise level operating at this airport together with estimated number of operations by this aircraft type during the calendar quarter reporting period:

B747: 2,412

5. Total number of aircraft operations during the calendar quarter*:

166,551

6. Number of Air Carrier operations during the calendar quarter: (Not Mandatory)*

151,090

7. Percentage of Air Carrier operations by aircraft certificated under Federal Aviation Regulation (FAR) Part 36, Stage III. (Not Mandatory)

100 %

8. Estimated number of operations by General Aviation aircraft during the calendar quarter: (Not Mandatory)*

4,624

9. Estimated number of operations by Military aircraft during the calendar quarter: (Not Mandatory)*

101

LOS ANGELES INTERNATIONAL AIRPORT

Incompatible Land Use

Annual Noise Impact Accumulated by Noise Zone: CNEL 65, 70, and 75 +

1Q19	Total Cumulative Noise Impact Areas - All Jurisdictions											
	<i>CNEL 65 dB and Above</i>				<i>CNEL 70 dB and Above</i>				<i>CNEL 75 dB and Above</i>			
Land Use	Acres	Dwelling Units	Parcels	Population	Acres	Dwelling Units	Parcels	Population	Acres	Dwelling Units	Parcels	Population
Single Family	296.5	2,076	2,122	7,617	65.3	435	441	1,870	4.7	21	21	106
Multi-Family	268.3	5,576	1,748	20,447	84.3	1,848	510	7,647	7.3	113	69	444
Mobile Home	1.0	1	3	3	0.0	0	0	0	0.0	0	0	0
Schools	8.2	0	29	0	3.0	0	17	0	0.0	0	0	0
Churches	24.0	25	55	62	2.4	0	2	0	0.0	0	0	0
Hospitals	0.6	0	2	0	0.0	0	0	0	0.0	0	0	0
Total Incompatible	598.6	7,678	3,959	28,128	155.0	2,283	970	9,517	12.0	134	90	550

Note: Parcels and dwelling units may not match for single family land uses due to subdivision.
Parcels for multifamily land uses reflect only the common area parcel, except for condominiums.

LOS ANGELES INTERNATIONAL AIRPORT

Incompatible Land Use

Annual Noise Impact Accumulated by Noise Zone: CNEL 65, 70, and 75 +

1Q19	Total Cumulative Noise Impact Areas - Athens											
	<i>CNEL 65 dB and Above</i>				<i>CNEL 70 dB and Above</i>				<i>CNEL 75 dB and Above</i>			
	Land Use	Acres	Dwelling Units	Parcels	Population	Acres	Dwelling Units	Parcels	Population	Acres	Dwelling Units	Parcels
Single Family	32.6	240	255	841	0.0	0	0	0	0.0	0	0	0
Multi-Family	36.6	667	227	2,284	0.0	0	0	0	0.0	0	0	0
Mobile Home	0.0	0	0	0	0.0	0	0	0	0.0	0	0	0
Schools	0.0	0	0	0	0.0	0	0	0	0.0	0	0	0
Churches	1.6	4	7	14	0.0	0	0	0	0.0	0	0	0
Hospitals	0.0	0	0	0	0.0	0	0	0	0.0	0	0	0
Total Incompatible	70.8	911	489	3,139	0.0	0	0	0	0.0	0	0	0

Note: Parcels and dwelling units may not match for single family land uses due to subdivision.
Parcels for multifamily land uses reflect only the common area parcel, except for condominiums.

Report Date: 05/01/2019

LOS ANGELES INTERNATIONAL AIRPORT

Incompatible Land Use

Annual Noise Impact Accumulated by Noise Zone: CNEL 65, 70, and 75 +

1Q19	Total Cumulative Noise Impact Areas - Del Aire											
	<i>CNEL 65 dB and Above</i>				<i>CNEL 70 dB and Above</i>				<i>CNEL 75 dB and Above</i>			
	Land Use	Acres	Dwelling Units	Parcels	Population	Acres	Dwelling Units	Parcels	Population	Acres	Dwelling Units	Parcels
Single Family	2.4	13	13	34	0.0	0	0	0	0.0	0	0	0
Multi-Family	0.7	12	3	22	0.0	0	0	0	0.0	0	0	0
Mobile Home	0.0	0	0	0	0.0	0	0	0	0.0	0	0	0
Schools	0.0	0	0	0	0.0	0	0	0	0.0	0	0	0
Churches	0.0	0	0	0	0.0	0	0	0	0.0	0	0	0
Hospitals	0.0	0	0	0	0.0	0	0	0	0.0	0	0	0
Total Incompatible	3.1	25	16	56	0.0	0	0	0	0.0	0	0	0

Note: Parcels and dwelling units may not match for single family land uses due to subdivision.
 Parcels for multifamily land uses reflect only the common area parcel, except for condominiums.

Report Date: 05/01/2019

LOS ANGELES INTERNATIONAL AIRPORT

Incompatible Land Use

Annual Noise Impact Accumulated by Noise Zone: CNEL 65, 70, and 75 +

1Q19	Total Cumulative Noise Impact Areas - City of El Segundo											
	<i>CNEL 65 dB and Above</i>				<i>CNEL 70 dB and Above</i>				<i>CNEL 75 dB and Above</i>			
	Land Use	Acres	Dwelling Units	Parcels	Population	Acres	Dwelling Units	Parcels	Population	Acres	Dwelling Units	Parcels
Single Family	80.3	531	535	1,383	15.3	94	94	245	0.0	0	0	0
Multi-Family	24.3	638	278	1,401	7.3	225	99	500	1.0	50	50	108
Mobile Home	0.4	1	1	3	0.0	0	0	0	0.0	0	0	0
Schools	0.0	0	0	0	0.0	0	0	0	0.0	0	0	0
Churches	0.7	0	2	0	0.0	0	0	0	0.0	0	0	0
Hospitals	0.0	0	0	0	0.0	0	0	0	0.0	0	0	0
Total Incompatible	105.7	1,170	816	2,786	22.6	319	193	744	1.0	50	50	108

Note: Parcels and dwelling units may not match for single family land uses due to subdivision.
Parcels for multifamily land uses reflect only the common area parcel, except for condominiums.

Report Date: 05/01/2019

LOS ANGELES INTERNATIONAL AIRPORT

Incompatible Land Use

Annual Noise Impact Accumulated by Noise Zone: CNEL 65, 70, and 75 +

1Q19	Total Cumulative Noise Impact Areas - City of Inglewood											
	<i>CNEL 65 dB and Above</i>				<i>CNEL 70 dB and Above</i>				<i>CNEL 75 dB and Above</i>			
	Land Use	Acres	Dwelling Units	Parcels	Population	Acres	Dwelling Units	Parcels	Population	Acres	Dwelling Units	Parcels
Single Family	88.1	610	628	2,314	9.7	66	69	300	0.0	0	0	0
Multi-Family	127.8	2,865	754	10,601	40.2	1,100	202	4,617	0.0	0	0	0
Mobile Home	0.6	0	2	0	0.0	0	0	0	0.0	0	0	0
Schools	2.1	0	2	0	0.0	0	0	0	0.0	0	0	0
Churches	14.0	12	25	24	2.1	0	1	0	0.0	0	0	0
Hospitals	0.6	0	2	0	0.0	0	0	0	0.0	0	0	0
Total Incompatible	233.2	3,487	1,413	12,940	52.0	1,166	272	4,916	0.0	0	0	0

Note: Parcels and dwelling units may not match for single family land uses due to subdivision.
Parcels for multifamily land uses reflect only the common area parcel, except for condominiums.

Report Date: 05/01/2019

LOS ANGELES INTERNATIONAL AIRPORT

Incompatible Land Use

Annual Noise Impact Accumulated by Noise Zone: CNEL 65, 70, and 75 +

1Q19	Total Cumulative Noise Impact Areas - Lennox											
	CNEL 65 dB and Above				CNEL 70 dB and Above				CNEL 75 dB and Above			
	Land Use	Acres	Dwelling Units	Parcels	Population	Acres	Dwelling Units	Parcels	Population	Acres	Dwelling Units	Parcels
Single Family	62.6	433	438	2,084	40.3	275	278	1,325	4.7	21	21	106
Multi-Family	57.4	872	341	4,109	36.7	523	209	2,530	6.3	63	19	336
Mobile Home	0.0	0	0	0	0.0	0	0	0	0.0	0	0	0
Schools	5.2	0	25	0	3.0	0	17	0	0.0	0	0	0
Churches	1.6	1	3	4	0.3	0	1	0	0.0	0	0	0
Hospitals	0.0	0	0	0	0.0	0	0	0	0.0	0	0	0
Total Incompatible	126.8	1,306	807	6,197	80.3	798	505	3,856	11.0	84	40	442

Note: Parcels and dwelling units may not match for single family land uses due to subdivision.
 Parcels for multifamily land uses reflect only the common area parcel, except for condominiums.

Report Date: 05/01/2019

LOS ANGELES INTERNATIONAL AIRPORT

Incompatible Land Use

Annual Noise Impact Accumulated by Noise Zone: CNEL 65, 70, and 75 +

1Q19	Total Cumulative Noise Impact Areas - South and South East LA											
	<i>CNEL 65 dB and Above</i>				<i>CNEL 70 dB and Above</i>				<i>CNEL 75 dB and Above</i>			
	Land Use	Acres	Dwelling Units	Parcels	Population	Acres	Dwelling Units	Parcels	Population	Acres	Dwelling Units	Parcels
Single Family	30.6	249	253	961	0.0	0	0	0	0.0	0	0	0
Multi-Family	21.5	522	145	2,030	0.0	0	0	0	0.0	0	0	0
Mobile Home	0.0	0	0	0	0.0	0	0	0	0.0	0	0	0
Schools	0.9	0	2	0	0.0	0	0	0	0.0	0	0	0
Churches	4.2	5	15	13	0.0	0	0	0	0.0	0	0	0
Hospitals	0.0	0	0	0	0.0	0	0	0	0.0	0	0	0
Total Incompatible	57.2	776	415	3,005	0.0	0	0	0	0.0	0	0	0

Note: Parcels and dwelling units may not match for single family land uses due to subdivision.
Parcels for multifamily land uses reflect only the common area parcel, except for condominiums.

Report Date: 05/01/2019

LOS ANGELES INTERNATIONAL AIRPORT

Incompatible Land Use

Annual Noise Impact Accumulated by Noise Zone: CNEL 65, 70, and 75 +

1Q19	Total Cumulative Noise Impact Areas - Westchester/Playa Del Rey											
	<i>CNEL 65 dB and Above</i>				<i>CNEL 70 dB and Above</i>				<i>CNEL 75 dB and Above</i>			
Land Use	Acres	Dwelling Units	Parcels	Population	Acres	Dwelling Units	Parcels	Population	Acres	Dwelling Units	Parcels	Population
Single Family	0.0	0	0	0	0.0	0	0	0	0.0	0	0	0
Multi-Family	0.0	0	0	0	0.0	0	0	0	0.0	0	0	0
Mobile Home	0.0	0	0	0	0.0	0	0	0	0.0	0	0	0
Schools	0.0	0	0	0	0.0	0	0	0	0.0	0	0	0
Churches	1.9	3	3	5	0.0	0	0	0	0.0	0	0	0
Hospitals	0.0	0	0	0	0.0	0	0	0	0.0	0	0	0
Total Incompatible	1.9	3	3	5	0.0	0	0	0	0.0	0	0	0

Note: Parcels and dwelling units may not match for single family land uses due to subdivision.
Parcels for multifamily land uses reflect only the common area parcel, except for condominiums.

Report Date: 05/01/2019

January	AIR1	PDR1	PDR2	PDR3*	ESG1	ESG2	ESG3	ESG4*	ESG5	DEL1*	WCH1*	WCH2	WCH3	WCH4*	WCH5	WCH6	ING1	ING2	ING3	ING4	ING6	ING5*	ING7*	ING8	LNK1	LNK2	LNK3	LNK4	ATH1*	ATH2	SLA1	SLA2*	SLA3	SLA4*	SLA5	SLA6*	SLA7	SLA8*	SLA9*
1 Tue	75	64	59	52	61	64	58	54	56	57	50	57	59	53	69	58	--	62	70		66	54	51	56	71	55	56	60		63	62	53	58	55	61	58	61	57	58
2 Wed	75	67	61	56	62	66	62	59	64	63	59	63	61	61	74	61	69	65	66		70	57	54	59	73	60	60	64	59	64	63	56	60	58	63	63	62	59	59
3 Thu	78	69	63	59	65	68	64	62	65	63	58	63	67	62	73	62	60	65	66		69	64	55	60	74	61	61	65	60	65	64	58	61	58	64	63	64	60	60
4 Fri	79	69	63	58	65	69	65	62	66	65	58	64	65	61	73	62	59	66	66		69	65	56	60	73	60	60	64	60	64	64	59	61	59	64	63	63	59	60
5 Sat	78	68	63	61	65	68	62	59	62	60	60	66	64	61	73	68	66	67	67		70	63	63	66	73		66	67	59	65	64	64	64	61	65	66	64	62	62
6 Sun	77	70	63	60	65	67	60	57	58	58	60	65	65	63	76	69	67	69	69		71	65	63	67	75	61	69	69	--	68	67	65	66	63	67	65	66	64	63
7 Mon	78	70	63	60	64	67	60	56	59	60	60	65	65	63	74	68		68	68		71	63	62	67	74	69	66	67	--	66	65	64	64	61	65	65	67	62	61
8 Tue	80	68	63	57	66	69	65	62	65	63	58	63	64	61	73	63	--	65	67		69	60	56	61	73	60	60	64		66	64	58	61	60	64	64	64	60	60
9 Wed	79	69	64	59	65	68	63	60	63	61	59	66	63	60	73	63	--	66	66		69	58	56	61	74	60	60	64		65	64	59	62	60	65	64	64	60	62
10 Thu	79	70	64	59	66	68	63	59	61	62	58	64	64	60	74	63	65	66	67		69	60	58	61	74	60	61	64	60	65	65	60	62	60	64	65	66	61	62
11 Fri	79	70	64	60	65	69	62	58	57	50	59	64	62	60	74	63	63	66	67		70	59	57	61	74	61	62	65	61	66	65	58	62	60	65	63	65	61	61
12 Sat	79	69	64	59	65	67	61	57	60	59	58	63	62	59	71	66	65	65	65		70	63	60	65	74	67	65	67	63	66	63	62	68	59	65	64	64	61	59
13 Sun	79	69	63	59	65	68	63	60	63	60	60	65	62	61	72	61	62	64	65		68	57	56	59	73	57	59	63		65	64	57	61	59	65	65	64	60	60
14 Mon	78	67	64	60	65	67	61	59	62	62	60	65	63	60	73	70	68	69	68		70	67	65	67	74		69	70	--	65	63	65	66	61	64	65	62	61	57
15 Tue	73	67	64		65	66	60	59	61	64	60	65	65	62	74	71	70	69	69		72	69	65	70	77		72	73	--	67	63	66	70	61	67	66	63	65	56
16 Wed	73	66	62		63	63	57	57	59	63	60	65	64	61	74	71	69	70	68		73	69	66	69	77		72	73	--	67	64	65	70	61	67	66	64	64	60
17 Thu	76	69	63		64	65	59	56	58	60	59	64	63	61	75	64	68	67	68		73	66	59	68	77		71		67	66	65	68	61	66	63	66	63	62	
18 Fri	79	70	64	60	65	68	63	59	61	57	57	62	63	59	74	63	62	67	67		71	61	58	64	76	61	62	67	61	67	65	61	64	60	66	62	66	63	62
19 Sat	79	68	62	57	64	67	64	62	65	66	54	59	60	53	72	61	59	65	66		68	55	56	61	69	62	55	61	58	64	64	59	61	59	62	64	63	61	61
20 Sun	77	70	63	57	65	68	63	58	63	62	56	59	59	57	72	60	61	64	64		69	56	54	60	73	62	59	64	58	64	63	57	61	57	63	60	63	60	59
21 Mon	76	68	63	57	66	68	64	61	63	62	53	59	58	51	73	63	61	66	66		70	58	57	62	75	61	60	66	60	65	64	59	62	59	64	61	64	60	61
22 Tue	76	66	60	54	64	67	63	61	63	63	52	56	58	55	73	61	58	65	66		69	57	54	61	72	62	60	63	59	65	64	57	60	58	63	65	63	58	
23 Wed	78	67	62	57	64	67	63	60	63	63	57	62	64	62	70	62	60	65	66		68	58	55	60	72	59	60	63	58	63	63	57	60	58	64	64	62	58	
24 Thu	78	68	62	58	64	67	64	62	64	65	58	61	61	61	74	63	61	65	66		69	57	56	60	73	60	61	64	60	64	64	59	61	59	64	66	64	60	
25 Fri	78	67	60	56	64	67	64	61	64	65	56	60	60	56	72	61	60	64	65		68	58	55	61	72	60	62	63	59	64	63	57	62	58	63	65	63	60	
26 Sat	77	65	59	54	63	66	63	59	64	64	53	57	59	54	68	58	61	60	64		67	60	50	60	72	58	61	62	57	63	61	56	59	55	62	65	63	60	
27 Sun	77	67	62	56	63	67	64	61	64	64	57	62	64	60	72	61	59	64	65		67	56	54	58	72	58	59	63	57	63	63	56	60	57	62	62	62	59	
28 Mon	79	68	63	59	64	67	63	62	65	62	59	65	61	60	73	62	59	65	66		68	57	55	59	73	60	60	63	59	64	64	57	60	59	63	61	64	59	
29 Tue	80	68	62	58	65	68	62	60	60	49	58	64	62	59	73	62	60	65	67		69	59	56	61	74	60	61	65	62	66	64	58	62	59	65	63	64	61	
30 Wed	79	70	64	59	65	68	61	57	57	52	59	65	62	58	73	62	61	66	67		71	60	57	62	76	62	64	67	62	67	65	59	64	60	66	63	66	62	61
31 Thu	76	67	61	58	64	66	59	58	60	63	59	64	63	60	72	69	69	67	67		72	67	64	69	75		70	71		67	64	66	67	61	66	67	64	63	58

* = Not Required for Title 21 Reporting

February	AIR1	PDR1	PDR2	PDR3*	ESG1	ESG2	ESG3	ESG4*	ESG5	DEL1*	WCH1*	WCH2	WCH3	WCH4*	WCH5	WCH6	ING1	ING2	ING3	ING4	ING6	ING5*	ING7*	ING8	LN1	LN2	LN3	LN4	ATH1*	ATH2	SLA1	SLA2*	SLA3	SLA4*	SLA5	SLA6*	SLA7	SLA8*	SLA9*
1 Fri	78	69	63	59	65	69	63	61	65	60	60	64	63	60	74	66	66	67	68		71	66	61	67	76	70	68	69	--	68	65	64	67	61	67	66	67	65	62
2 Sat	76	70	64	60	64	66	59	55	57	61	60	64	66	62	70	66		66	67		72	66	61	68	76		70	70	--	67	65	66	67	61	67	66	66	64	62
3 Sun	77	71	65	59	65	67	61	57	57	49	59	63	64	61	--	63	--	66	67		71	62	57	62	75	59	63	66	--	67	65	59	64	60	65	63	66	61	62
4 Mon	77	71	65	62	66	68	62	58	58	53	59	65	66	62	--	65	--	68	69		71	61	60	63	75	62	64	66	--	66	66	61	63	61	65	64	66	62	63
5 Tue	76	70	64	58	66	68	63	60	61	57	56	60	58	56	--	64	62	67	68		71	59	59	64	74	60	61	66	--	66	66	61	62	60	65	62	65	60	63
6 Wed	77	68	62	56	65	67	63	61	63	62	55	57	57	53		62	60	65	66		70	58	56	63	73	61	60	64	--	65	64	60	62	59	64	62	65	60	61
7 Thu	78	68	63	59	65	68	64	62	66	62	58	61	57	53	72	61	64	65	66		73	61	56	60	72	59	60	63	--	65	64	58	61	59	63	66	63	60	62
8 Fri	79	69	64	59	65	68	64	61	64	62	61	65	64	63	73	62	59	65	66		69	58	57	61	73	60	60	64		65	64	59	62	62	64	65	64	62	63
9 Sat	79	69	63	58	65	68	62	58	60	55	58	63	61	57	73	62	60	66	67		69	56	57	63	69	64	58	61	--	66	64	59	59	60	63	62	64	60	62
10 Sun	78	69	62	57	65	68	64	61	63	61	58	62	61	60	73	62	60	65	66		69	57	57	61	72	59	59	63	--	64	64	58	60	59	64	60	63	59	61
11 Mon	77	69	64	60	65	67	63	60	64	61	57	61	61	61	73	63	60	65	66		69	63	56	61	73	62	60	64		65	65	59	61	60	64	65	65	61	62
12 Tue	80	69	63	60	65	68	64	62	66	62	60	64	61	59	72	61	58	64	65		67	55	53	59	72	57	58	62		63	62	55	59	57	62	63	61	58	
13 Wed	76	67	63	61	64	66	59	57	59	62	60	65	64	61	73	70	67	68	67		69	66	64	66	73		69	69		63	62	62	65	59	64	65	62	61	54
14 Thu	77	70	65		66	67	62	58	61	62	63	66	65	63	76	70	69	70	70		73	67	64	68	77		70	71		67	67	65	67	62	67	65	66	64	64
15 Fri	78	71	65	59	66	69	64	61	61	59	59	65	64	63	76	65	63	69	69		72	61	60	64	76	63	64	67	--	67	67	61	65	62	66	63	66	63	
16 Sat	78	69	63	57	67	69	65	60	62	62	56	61	59	57	73	62	61	66	67		71	60	58	63	76	62	63	67	--	67	65	59	64	60	65	60	66	62	61
17 Sun	77	70	63	58	67	69	64	61	62	60	55	59	55	53	73	62	61	65	66		70	58	57	62	74	61	61	66	--	65	64	58	62	59	64	59	64	62	61
18 Mon	77	68	63	58	65	68	63	62	63	62	54	60	55	52	74	63	60	66	67		70	59	57	61	74	61	61	65	--	65	65	59	63	61	65	62	65	61	
19 Tue	78	69	63	56	65	68	63	61	62	62	55	59	57	53	74	63	60	66	67		70	58	57	63	73	63	60	65	--	66	64	59	62	60	65	64	65	60	--
20 Wed	79	69	64	61	66	68	63	60	62	55	59	63	60	56	74	63	61	67	68		70	63	58	61	73	61	61	65	--	65	65	59	62	61	64	63	64	60	--
21 Thu	79	69	64	57	66	69	64	60	62	61	58	60	56	53	73	62	61	66	67		70	58	58	61	74	61	61	65	--	66	65	59	62	60	64	62	65	61	--
22 Fri	78	68	62	57	65	68	64	61	63	65	61	60	60	54	73	61	60	65	66		69	58	55	61	73	59	60	64	--	65	64	58	61	59	64	63	65	62	--
23 Sat	79	69	63	58	66	69	64	61	64	56	59	62	62	57	73	62	60	65	66		69	58	56	60	73	59	61	64	--	65	64	59	61	60	65	62	64	65	--
24 Sun	78	69	62	57	65	69	63	59	61	61	59	62	62	59	73	63	60	65	69		68	58	56	60	73	59	60	63		65	64	58	62	59	63	59	63	63	--
25 Mon	78	69	64	59	65	68	63	62	61	53	58	65	67	63	74	63	60	66	66		69	59	56	60	73	60	61	64		65	64	58	61	60	64	62	64	57	
26 Tue	79	66	64	59	65	68	62	60	59	50	57	62	62	59	73	63	61	66	68		70	59	57	62	74	60	62	66		66	65	60	65	60	65	63	65	--	60
27 Wed	78	66	64	59	65	68	61	58	58	48	57	62	62	57	74	63		66	68		71	60	58	63	76	61	63	67	--	68	66	60	65	60	66	66	66	63	60
28 Thu	79	68	63	61	65	69	62	60	57	50	58	63	61	56	74	63	--	66	67		71	61	56	61	75	61	62	67	58	66	64	59	63	59	65	62	64	59	62

* = Not Required for Title 21 Reporting

March	AIR1	PDR1	PDR2	PDR3*	ESG1	ESG2	ESG3	ESG4*	ESG5	DEL1*	WCH1*	WCH2	WCH3	WCH4*	WCH5	WCH6	ING1	ING2	ING3	ING4	ING6	ING5*	ING7*	ING8	LN1	LN2	LN3	LN4	ATH1*	ATH2	SLA1	SLA2*	SLA3	SLA4*	SLA5	SLA6*	SLA7	SLA8*	SLA9*
1 Fri	79	69	64	58	65	68	62	58	58	52	57	62	61	57	75	64	62	67	68		72	60	58	63	76	62	64	67	61	67	66	59	65	61	65	62	66	--	62
2 Sat	79	68	62	56	64	67	59	55	56	56	56	62	61	58	74	66	64	67	67		72	64	60	67	76		66	68		67	64	64	65	60	66	63	66	--	60
3 Sun	77	71	65	58	--	67	62	57	58	53	57	61	61	58	75	64	61	68	68		71	60	59	62	76	62	63	67		67	66	60	64	61	66	61	66	--	--
4 Mon	77	71	65	60		67	63	58	61	54	57	62	62	59	75	65		68	69		71	59	59	63	75	62	62	66	64	67	67	62	63	62	65	62	66	--	63
5 Tue	78	70	66	63	67	68	64	61	62	59	63	67	63	60	73	66	--	66	67		70	64	60	65	74	69	66	67		65	65	63	63	60	65	64	64	--	61
6 Wed	78	70	65	60	65	67	62	60	61	62	60	65	65	62	74	68	--	68	68		72	66	62	69	76	73	69	70	--	67	65	66	68	61	66	65	66	--	62
7 Thu	78	71	65	60	66	69	63	59	61	60	59	62	63	61	74	64	--	67	68		70	60	59	62	74	63	62	65	--	66	66	61	64	61	65	62	65	--	63
8 Fri	78	71	64	58	66	68	64	59	61	60	56	60	61	57	74	63	--	67	68		72	60	59	64	76	62	63	67	--	67	66	60	64	61	66	63	67	63	63
9 Sat	79	70	65	60	65	68	62	58	60	51	60	64	61	56	74	64	--	67	68		71	60	59	63	75	61	62	67	--	67	66	60	64	61	66	65	66	63	62
10 Sun	78	70	64	58	65	68	62	58	59	50	57	60	57	54	74	63	--	67	67		70	60	58	62	75	62	62	65	--	67	65	60	63	61	65	61	65	61	62
11 Mon	78	71	65	60	65	68	62	59	60	55	58	63	62	58	74	63	--	66	67		71	59	57	62	75	61	62	66	--	67	66	60	63	60	66	63	66	65	62
12 Tue	79	70	64	58	66	68	63	61	62	60	56	61	60	56	73	63	--	66	68		71	59	57	64	75	61	62	67	--	67	65	59	65	60	66	65	66	61	61
13 Wed	80	68	63	56	66	68	64	62	64	60	51	57	57	54	72	61		65	67		71	60	56	63	76	62	62	67	--	67	65	60	65	59	66	66	66	60	61
14 Thu	79	68	63	59	65	68	63	61	63	60	62	64	66	65	73	63	60	65	66		69	57	55	60	73	60	60	64	--	65	64	58	61	59	63	62	63	59	60
15 Fri	78	67	61	57	64	67	63	58	63	64	58	63	61	55	72	60	58	64	64		68	57	53	60	71	60	60	62	--	63	62	56	60	57	62	60	63	59	59
16 Sat	78	66	60	55	63	67	64	62	66	66	55	62	59	55	72	61	58	64	64		68	57	54	59	73	59	61	63	--	64	62	57	60	58	64	63	63	63	59
17 Sun	79	68	62	57	65	68	62	60	62	62	59	63	61	58	73	63	60	66	66		69	58	56	61	73	61	61	64		65	64	58	62	58	64	62	64	60	61
18 Mon	81	70	65	60	66	69	62	59	59	52	59	65	62	58	73	63	60	66	66		69	59	57	61	74	60	60	64	--	65	64	58	62	59	64	62	64	60	60
19 Tue	79	70	65	60	65	68	62	59	61	54	58	64	63	59	75	64	62	67	69		70	59	59	61	74	61	61	65	--	66	66	60	63	61	65	63	65	60	63
20 Wed	80	70	64	60	66	69	62	60	59	54	58	63	62	59	74	64	61	67	68		71	60	58	64	75	63	63	66	62	67	66	61	63	60	65	64	66	61	63
21 Thu	78	71	66	60	66	69	63	59	61	57	59	63	63	61	75	64	62	67	68		72	62	59	64	77	64	65	68		68	66	62	66	61	68	64	67	62	63
22 Fri	78	70	65	59	66	69	64	59	61	56	59	63	61	61	74	63	61	66	67		71	60	58	63	75	62	62	66	--	66	66	61	64	60	65	64	66	63	62
23 Sat	79	69	63	57	66	69	63	58	60	50	56	61	60	57	74	63	61	67	67		70	62	58	62	75	61	63	63	--	66	65	59	64	60	65	62	65	62	61
24 Sun	78	69	63	57	65	68	63	58	59	53	56	61	62	59	74	63	60	66	67		70	60	57	61	74	61	61	--	--	66	65	59	64	60	64	60	64	62	62
25 Mon	79	70	65	59	66	69	63	61	61	52	58	64	63	59	74	63	60	66	67		69	60	57	60	74	61	61	--		66	65	58	61	60	64	60	64	60	61
26 Tue	79	69	64	59	66	69	63	60	60	53	58	63	63	60	73	63	60	66	67		69	60	57	61	74	61	62	--	57	65	64	58	62	59	65	60	64	65	60
27 Wed	79	69	64	59	66	69	63	59	60	53	56	62	63	59	74	64	63	66	67		71	60	58	62	75	62	63	--		65	65	59	63	60	64	61	65	63	61
28 Thu	79	70	65	59	65	68	63	59	62	55	57	62	61	60	75	64	62	67	68		72	62	58	63	77	64	64	--		68	66	61	65	61	67	63	67	63	63
29 Fri	79	70	64	57	66	69	64	62	64	61	55	63	63	59	74	63	61	66	67		70	62	57	62	74	62	62		61	65	65	59	62	60	65	62	65	62	63
30 Sat	79	68	62	56	66	68	64	63	66	65	54	61	60	57	72	61	59	64	65		68	58	56	59	72	60	61	--		64	66	57	61	58	63	62	64	60	61
31 Sun	78	67	61	56	65	68	64	63	65	66	55	63	60	58	73	62	59	65	66		68	57	55	61	73	59	60		60	65	63	57	61	59	64	61	63	60	59

* = Not Required for Title 21 Reporting

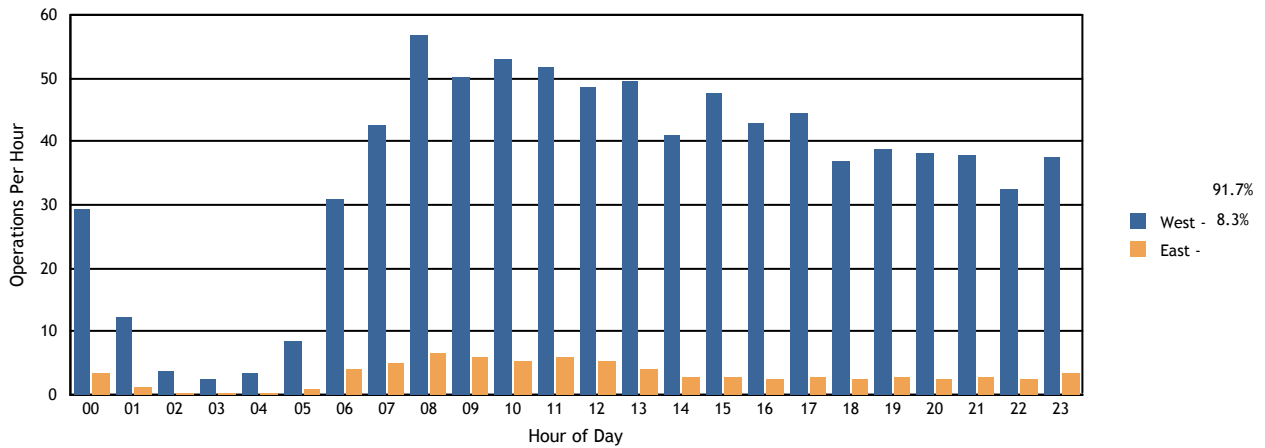
Time Period	Percent Daily Operations Per Runway								Average Operations	Runway Complex		Runway Flow		In Board	Out Board	
	06L	06R	07L	07R	24L	24R	25L	25R		South	North	West	East			
Departures																
Total Hours																
24 Hours	<1%	3%	5%	<1%	42%	<1%	2%	47%	920	55%	45%	92%	8%	98%	2%	
CNEL Hours																
0700 - 1900	<1%	4%	5%	<1%	46%	<1%	2%	43%	619	50%	50%	92%	8%	98%	2%	
1900 - 2200	0%	3%	4%	<1%	45%	<1%	2%	46%	123	52%	48%	94%	6%	97%	3%	
2200 - 0700	0%	2%	7%	<1%	26%	<1%	2%	62%	178	71%	29%	91%	9%	97%	3%	
Contra Hours																
Midnight - 0630	0%	2%	8%	<1%	13%	<1%	3%	74%	86	84%	16%	90%	10%	97%	3%	
0630 - Midnight	<1%	3%	5%	<1%	45%	<1%	2%	45%	834	51%	49%	92%	8%	98%	2%	
Arrivals																
Total Hours																
24 Hours	4%	3%	<1%	4%	<1%	43%	45%	1%	917	50%	50%	89%	11%	5%	95%	
CNEL Hours																
0700 - 1900	4%	<1%	<1%	4%	<1%	45%	45%	1%	620	51%	49%	92%	8%	2%	98%	
1900 - 2200	3%	<1%	<1%	3%	<1%	46%	45%	1%	161	50%	50%	93%	7%	2%	98%	
2200 - 0700	4%	18%	<1%	6%	<1%	28%	40%	2%	136	49%	51%	71%	29%	22%	78%	
Contra Hours																
Midnight - 0630	4%	48%	1%	9%	2%	9%	23%	4%	52	38%	62%	38%	62%	54%	46%	
0630 - Midnight	4%	<1%	<1%	4%	<1%	45%	46%	1%	865	51%	49%	92%	8%	2%	98%	

All values are rounded to the nearest whole number.

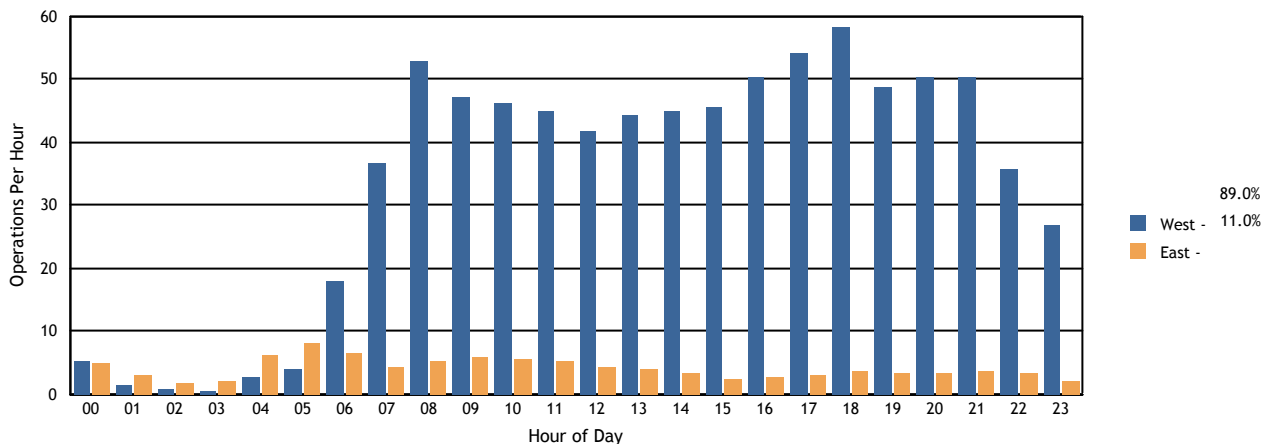
Time Period	Departures			Arrivals			Departures		Arrivals	
	West	East	Average	West	East	Average	West	East	West	East
Total Hours										
24 Hours	843	77	920	816	101	917	92%	8%	89%	11%
CNEL Hours										
0700-1900	567	52	619	569	51	620	92%	8%	92%	8%
1900-2200	115	8	123	150	11	161	94%	6%	93%	7%
2200-0700	161	16	178	97	39	136	91%	9%	71%	29%
Contra Hours										
Midnight - 0630	77	9	86	20	32	52	90%	10%	38%	62%
0630 - Midnight	766	68	834	796	69	865	92%	8%	92%	8%

All percentages are rounded to the nearest whole number.

Departures Per Hour by Operational Direction



Arrivals Per Hour by Operational Direction



LAX Average Daily Runway Use By Aircraft Type - 24 Hours
First Quarter 2019

Arrivals (Average Daily Operations)								
Aircraft Type	06L	06R	07L	07R	24L	24R	25L	25R
A20N	0.022	0.000	0.000	0.033	0.000	0.211	1.100	0.011
A21N	0.300	0.078	0.000	0.422	0.078	3.378	3.933	0.100
A306	0.033	0.311	0.000	0.233	0.000	0.033	1.167	0.100
A30B	0.011	0.100	0.000	0.011	0.000	0.000	0.333	0.011
A310	0.000	0.000	0.000	0.000	0.000	0.000	0.011	0.000
A319	1.567	0.222	0.000	2.133	0.233	20.456	23.311	0.544
A320	1.600	0.567	0.022	3.389	0.222	18.856	35.244	0.889
A321	1.878	3.589	0.044	5.822	0.222	19.556	64.922	1.433
A332	0.522	0.411	0.000	0.189	0.078	5.311	2.833	0.100
A333	0.356	0.011	0.000	0.189	0.022	3.633	1.567	0.000
A343	0.056	0.011	0.000	0.033	0.011	0.267	0.800	0.011
A345	0.000	0.000	0.000	0.000	0.000	0.000	0.022	0.000
A346	0.022	0.000	0.000	0.044	0.011	0.589	0.311	0.000
A359	0.211	0.000	0.000	0.033	0.022	3.067	0.056	0.000
A388	0.878	0.911	0.000	0.000	0.167	8.333	0.089	0.000
AC95	0.000	0.000	0.000	0.000	0.000	0.022	0.033	0.000
ASTR	0.000	0.000	0.000	0.011	0.000	0.011	0.044	0.000
B350	0.044	0.000	0.000	0.000	0.000	0.233	0.356	0.000
B38M	0.356	0.100	0.000	0.289	0.044	3.289	2.789	0.056
B39M	0.111	0.422	0.022	0.411	0.022	1.011	3.244	0.100
B712	1.122	0.078	0.000	0.300	0.222	13.367	1.956	0.044
B721	0.000	0.000	0.000	0.000	0.000	0.000	0.011	0.000
B733	0.000	0.000	0.000	0.022	0.000	0.044	0.211	0.011
B734	0.000	0.022	0.000	0.067	0.000	0.033	0.722	0.000
B735	0.000	0.000	0.000	0.000	0.000	0.078	0.011	0.000
B736	0.022	0.000	0.000	0.000	0.000	0.178	0.078	0.000
B737	4.989	0.878	0.011	2.456	0.978	62.256	18.222	0.422
B738	3.711	1.222	0.022	5.200	0.622	43.000	52.256	1.278
B739	1.489	1.067	0.011	1.933	0.144	17.467	25.011	0.889
B742	0.000	0.044	0.000	0.089	0.000	0.000	1.067	0.033
B744	0.222	0.856	0.011	0.600	0.033	1.133	5.011	0.133
B748	0.022	0.389	0.000	0.411	0.033	0.078	3.233	0.000
B752	1.067	3.111	0.067	1.822	0.467	12.589	16.011	0.511
B753	0.311	0.856	0.011	0.522	0.133	4.133	6.533	0.156
B762	0.011	0.222	0.000	0.100	0.000	0.022	0.589	0.033
B763	0.222	1.844	0.133	1.478	0.056	2.189	8.878	0.522
B764	0.100	0.000	0.000	0.122	0.011	1.600	0.722	0.011
B772	0.211	0.322	0.033	0.422	0.044	2.133	5.267	0.111
B773	0.067	0.000	0.000	0.000	0.000	0.733	0.000	0.000
B77L	0.333	1.322	0.022	0.800	0.022	1.478	5.278	0.156

Departures (Average Daily Operations)								
Aircraft Type	06L	06R	07L	07R	24L	24R	25L	25R
A20N	0.000	0.022	0.022	0.000	0.000	0.000	0.000	1.333
A21N	0.000	0.311	0.444	0.011	2.600	0.033	0.022	4.889
A306	0.000	0.011	0.178	0.000	0.011	0.000	0.222	1.444
A30B	0.000	0.000	0.011	0.000	0.000	0.000	0.022	0.433
A310	0.000	0.000	0.000	0.000	0.000	0.000	0.000	0.011
A319	0.000	1.756	2.078	0.000	21.500	0.111	0.189	22.878
A320	0.000	1.922	3.311	0.011	22.644	0.178	0.278	33.178
A321	0.000	2.900	5.422	0.011	13.611	0.067	0.689	74.656
A332	0.000	0.144	0.633	0.000	4.933	0.011	0.033	3.678
A333	0.000	0.278	0.233	0.000	3.933	0.000	0.033	1.344
A343	0.000	0.011	0.078	0.000	0.544	0.000	0.011	0.544
A345	0.000	0.000	0.000	0.000	0.000	0.000	0.033	0.000
A346	0.000	0.067	0.000	0.000	0.111	0.000	0.011	0.800
A359	0.000	0.044	0.256	0.000	1.656	0.000	0.000	1.422
A388	0.000	0.656	0.000	0.156	8.989	0.000	0.556	0.000
AC95	0.000	0.000	0.000	0.000	0.000	0.000	0.000	0.056
ASTR	0.000	0.000	0.000	0.000	0.000	0.000	0.033	0.033
B350	0.000	0.000	0.011	0.000	0.167	0.011	0.133	0.311
B38M	0.000	0.400	0.278	0.000	3.511	0.022	0.000	2.711
B39M	0.000	0.000	0.589	0.000	0.744	0.000	0.011	4.011
B712	0.011	0.633	0.722	0.011	15.411	0.178	0.000	0.089
B721	0.000	0.000	0.000	0.000	0.000	0.000	0.000	0.011
B733	0.000	0.000	0.011	0.000	0.011	0.000	0.000	0.244
B734	0.000	0.000	0.078	0.000	0.022	0.000	0.067	0.678
B735	0.000	0.000	0.011	0.000	0.011	0.000	0.011	0.056
B736	0.000	0.011	0.000	0.000	0.256	0.011	0.000	0.000
B737	0.000	4.078	3.689	0.000	78.300	0.567	0.067	3.867
B738	0.000	3.122	6.044	0.000	56.089	0.344	0.344	41.989
B739	0.000	1.178	2.678	0.000	13.822	0.044	0.200	31.489
B742	0.000	0.000	0.122	0.011	0.000	0.000	0.100	1.000
B744	0.000	0.200	0.500	0.033	0.467	0.000	0.856	5.944
B748	0.000	0.022	0.000	0.278	0.289	0.000	3.556	0.000
B752	0.000	0.844	2.278	0.000	17.733	0.111	0.267	14.356
B753	0.000	0.267	0.556	0.000	4.811	0.044	0.067	6.889
B762	0.000	0.000	0.089	0.000	0.011	0.000	0.022	0.856
B763	0.000	0.311	1.156	0.056	3.633	0.000	1.100	9.033
B764	0.000	0.144	0.056	0.000	2.233	0.033	0.000	0.111
B772	0.000	0.167	0.478	0.000	0.811	0.011	0.067	7.033
B773	0.000	0.000	0.078	0.000	0.233	0.000	0.000	0.467
B77L	0.000	0.233	0.522	0.033	1.978	0.000	1.244	5.367

LAX Average Daily Runway Use By Aircraft Type - 24 Hours First Quarter 2019

Arrivals (Average Daily Operations)								
Aircraft Type	06L	06R	07L	07R	24L	24R	25L	25R
B77W	2.100	0.544	0.000	0.244	0.178	20.800	3.989	0.056
B788	0.233	0.244	0.000	0.322	0.022	1.711	2.378	0.122
B789	1.244	2.656	0.044	1.044	0.178	11.589	9.411	0.467
B78X	0.011	0.000	0.000	0.011	0.000	0.189	0.500	0.000
BE10	0.000	0.000	0.000	0.000	0.000	0.000	0.044	0.000
BE20	0.022	0.000	0.011	0.022	0.000	0.244	0.133	0.011
BE24	0.000	0.000	0.000	0.000	0.000	0.000	0.033	0.000
BE30	0.222	0.000	0.000	0.089	0.022	1.922	0.956	0.000
BE35	0.000	0.011	0.000	0.000	0.000	0.000	0.022	0.000
BE36	0.000	0.000	0.000	0.000	0.000	0.011	0.000	0.000
BE40	0.022	0.000	0.000	0.000	0.011	0.078	0.278	0.011
BE58	0.000	0.000	0.000	0.000	0.000	0.011	0.011	0.000
BE99	0.022	0.011	0.000	0.033	0.011	0.333	0.267	0.000
BE9L	0.000	0.000	0.000	0.000	0.000	0.033	0.033	0.000
BL17	0.000	0.000	0.000	0.000	0.000	0.011	0.000	0.000
BR14	0.011	0.000	0.000	0.000	0.000	0.000	0.000	0.000
C172	0.000	0.000	0.000	0.000	0.000	0.000	0.044	0.000
C182	0.000	0.000	0.000	0.000	0.011	0.000	0.000	0.000
C208	0.000	0.011	0.000	0.267	0.000	0.022	2.967	0.144
C210	0.000	0.000	0.000	0.000	0.000	0.011	0.022	0.000
C25A	0.022	0.011	0.000	0.000	0.011	0.111	0.189	0.000
C25B	0.011	0.000	0.000	0.089	0.000	0.189	0.389	0.000
C25C	0.000	0.000	0.000	0.000	0.000	0.011	0.067	0.000
C310	0.000	0.000	0.000	0.000	0.000	0.011	0.011	0.000
C441	0.000	0.000	0.000	0.011	0.000	0.000	0.000	0.011
C501	0.000	0.000	0.000	0.000	0.000	0.011	0.022	0.000
C510	0.000	0.000	0.000	0.000	0.000	0.000	0.022	0.000
C525	0.000	0.000	0.000	0.044	0.000	0.133	0.322	0.000
C550	0.000	0.000	0.000	0.000	0.000	0.044	0.078	0.000
C560	0.011	0.022	0.000	0.033	0.000	0.122	0.267	0.011
C56X	0.067	0.044	0.011	0.100	0.000	0.456	1.400	0.022
C650	0.000	0.011	0.000	0.000	0.000	0.000	0.078	0.000
C680	0.067	0.000	0.011	0.122	0.000	0.456	1.000	0.000
C68A	0.000	0.000	0.000	0.011	0.011	0.178	0.333	0.022
C750	0.044	0.033	0.000	0.089	0.000	0.322	0.733	0.056
CL30	0.033	0.056	0.000	0.111	0.011	0.567	1.433	0.056
CL35	0.044	0.000	0.000	0.078	0.011	0.344	0.900	0.033
CL60	0.044	0.022	0.000	0.111	0.000	0.622	1.578	0.044
COL3	0.000	0.000	0.000	0.000	0.000	0.000	0.011	0.000

Departures (Average Daily Operations)								
Aircraft Type	06L	06R	07L	07R	24L	24R	25L	25R
B77W	0.000	0.356	1.867	0.000	9.522	0.000	0.078	15.967
B788	0.000	0.122	0.378	0.000	3.144	0.022	0.022	1.356
B789	0.000	0.711	1.456	0.000	6.922	0.033	0.133	17.389
B78X	0.000	0.000	0.000	0.000	0.011	0.000	0.011	0.678
BE10	0.000	0.000	0.000	0.000	0.000	0.000	0.000	0.044
BE20	0.000	0.033	0.011	0.000	0.156	0.000	0.033	0.189
BE24	0.000	0.000	0.000	0.000	0.011	0.000	0.000	0.022
BE30	0.000	0.300	0.022	0.011	1.011	0.011	0.289	1.544
BE35	0.000	0.000	0.000	0.000	0.000	0.000	0.011	0.022
BE36	0.000	0.000	0.000	0.000	0.000	0.000	0.000	0.011
BE40	0.000	0.011	0.011	0.000	0.044	0.000	0.089	0.244
BE58	0.000	0.000	0.000	0.000	0.011	0.000	0.000	0.011
BE99	0.000	0.011	0.056	0.000	0.044	0.000	0.022	0.556
BE9L	0.000	0.000	0.011	0.000	0.022	0.000	0.011	0.022
BL17	0.000	0.000	0.000	0.000	0.000	0.000	0.011	0.011
Boeing 757-324 (w)	0.000	0.000	0.000	0.000	0.000	0.000	0.000	0.011
BR14	0.000	0.000	0.000	0.000	0.011	0.000	0.000	0.000
C172	0.000	0.000	0.000	0.000	0.000	0.000	0.000	0.044
C208	0.000	0.000	0.233	0.000	0.011	0.000	0.011	3.144
C210	0.000	0.000	0.000	0.000	0.000	0.000	0.000	0.033
C25A	0.000	0.011	0.011	0.000	0.033	0.000	0.122	0.167
C25B	0.000	0.022	0.067	0.000	0.056	0.000	0.133	0.400
C25C	0.000	0.000	0.000	0.000	0.000	0.000	0.022	0.067
C310	0.000	0.000	0.000	0.000	0.011	0.000	0.000	0.011
C441	0.000	0.000	0.011	0.000	0.000	0.000	0.000	0.011
C501	0.000	0.011	0.000	0.000	0.000	0.000	0.000	0.022
C510	0.000	0.000	0.000	0.000	0.000	0.000	0.000	0.022
C525	0.000	0.000	0.044	0.011	0.033	0.000	0.033	0.367
C550	0.000	0.000	0.000	0.000	0.011	0.000	0.022	0.089
C560	0.000	0.011	0.022	0.000	0.033	0.000	0.044	0.344
C56X	0.000	0.089	0.167	0.000	0.233	0.000	0.278	1.344
C650	0.000	0.000	0.000	0.000	0.000	0.000	0.044	0.044
C680	0.000	0.067	0.022	0.000	0.156	0.000	0.256	1.156
C68A	0.000	0.000	0.044	0.000	0.033	0.011	0.089	0.367
C750	0.000	0.078	0.044	0.000	0.100	0.000	0.256	0.800
CL30	0.000	0.100	0.044	0.022	0.056	0.000	0.444	1.656
CL35	0.000	0.056	0.033	0.000	0.144	0.000	0.289	0.878
CL60	0.000	0.078	0.100	0.011	0.222	0.000	0.278	1.711
COL4	0.000	0.044	0.044	0.000	0.000	0.000	0.000	0.500

LAX Average Daily Runway Use By Aircraft Type - 24 Hours First Quarter 2019

Arrivals (Average Daily Operations)								
Aircraft Type	06L	06R	07L	07R	24L	24R	25L	25R
COL4	0.022	0.000	0.000	0.033	0.000	0.100	0.411	0.000
CRJ2	1.622	0.378	0.000	0.722	0.189	15.867	6.100	0.211
CRJ7	1.056	0.022	0.000	1.089	0.100	11.111	12.467	0.367
CRJ9	0.000	0.000	0.000	0.000	0.000	0.011	0.022	0.000
DA40	0.000	0.000	0.000	0.000	0.000	0.000	0.011	0.000
DC10	0.000	0.178	0.022	0.167	0.000	0.011	0.889	0.011
DC87	0.000	0.000	0.000	0.000	0.000	0.011	0.000	0.000
DH8A	0.000	0.000	0.000	0.011	0.000	0.011	0.022	0.000
DH8B	0.000	0.000	0.000	0.000	0.000	0.000	0.011	0.000
DH8D	0.011	0.000	0.000	0.000	0.000	0.167	0.011	0.000
E135	0.000	0.000	0.000	0.000	0.000	0.011	0.033	0.000
E170	0.000	0.000	0.000	0.000	0.000	0.000	0.033	0.000
E190	0.000	0.000	0.000	0.189	0.000	0.089	1.722	0.011
E35L	0.000	0.011	0.000	0.022	0.000	0.011	0.200	0.000
E45X	0.000	0.000	0.000	0.000	0.000	0.000	0.022	0.000
E50P	0.022	0.011	0.000	0.011	0.022	0.178	0.322	0.011
E545	0.022	0.000	0.000	0.044	0.000	0.022	0.144	0.011
E550	0.000	0.011	0.000	0.056	0.000	0.056	0.456	0.011
E55P	0.067	0.000	0.000	0.122	0.000	0.378	0.911	0.033
E75L	5.389	0.389	0.078	3.956	0.689	64.256	44.867	1.411
E75S	0.022	0.011	0.000	0.011	0.011	0.422	0.256	0.022
F2TH	0.033	0.067	0.011	0.067	0.011	0.356	1.056	0.011
F900	0.022	0.011	0.000	0.056	0.011	0.156	0.756	0.011
FA20	0.000	0.000	0.000	0.000	0.000	0.000	0.011	0.000
FA50	0.000	0.011	0.000	0.011	0.000	0.033	0.222	0.000
FA7X	0.011	0.000	0.000	0.056	0.000	0.100	0.089	0.011
FA8X	0.011	0.000	0.000	0.011	0.000	0.022	0.100	0.000
G150	0.000	0.000	0.000	0.011	0.000	0.011	0.178	0.000
G200	0.000	0.000	0.000	0.000	0.000	0.000	0.022	0.000
G280	0.000	0.000	0.000	0.000	0.000	0.056	0.189	0.000
GA5C	0.000	0.000	0.000	0.011	0.000	0.000	0.011	0.000
GALX	0.022	0.000	0.000	0.056	0.000	0.167	0.444	0.000
GL5T	0.011	0.011	0.000	0.033	0.011	0.178	0.389	0.000
GLAS	0.000	0.000	0.000	0.000	0.011	0.000	0.000	0.000
GLDR	0.000	0.000	0.000	0.000	0.000	0.000	0.011	0.000
GLEX	0.089	0.056	0.000	0.100	0.000	0.511	1.589	0.022
GLF3	0.011	0.000	0.000	0.022	0.000	0.044	0.067	0.000
GLF4	0.033	0.100	0.000	0.167	0.011	0.589	1.767	0.044
GLF5	0.033	0.044	0.011	0.144	0.011	0.600	1.889	0.022
GLF6	0.022	0.022	0.000	0.056	0.011	0.256	0.600	0.000

Departures (Average Daily Operations)								
Aircraft Type	06L	06R	07L	07R	24L	24R	25L	25R
CRJ2	0.000	1.222	1.089	0.000	11.111	0.056	0.044	11.622
CRJ7	0.011	1.478	0.600	0.000	8.500	0.044	0.056	15.567
CRJ9	0.000	0.000	0.000	0.000	0.044	0.000	0.000	0.022
DA40	0.000	0.000	0.000	0.000	0.000	0.000	0.000	0.011
DC10	0.000	0.000	0.178	0.033	0.011	0.000	0.178	0.867
DC87	0.000	0.000	0.000	0.000	0.000	0.000	0.000	0.011
DH8A	0.000	0.000	0.000	0.000	0.000	0.000	0.000	0.044
DH8D	0.000	0.011	0.000	0.000	0.178	0.000	0.000	0.000
E135	0.000	0.000	0.000	0.000	0.000	0.000	0.011	0.033
E170	0.000	0.000	0.000	0.000	0.033	0.000	0.000	0.000
E190	0.000	0.022	0.111	0.000	1.244	0.011	0.078	0.544
E35L	0.000	0.011	0.011	0.000	0.011	0.000	0.044	0.178
E45X	0.000	0.000	0.000	0.000	0.000	0.000	0.000	0.022
E50P	0.000	0.022	0.022	0.011	0.033	0.000	0.111	0.378
E545	0.000	0.056	0.011	0.000	0.033	0.000	0.011	0.133
E550	0.000	0.044	0.022	0.000	0.000	0.000	0.067	0.467
E55P	0.000	0.089	0.122	0.011	0.167	0.000	0.200	0.933
E75L	0.000	4.011	5.489	0.033	58.744	0.311	0.256	52.189
E75S	0.000	0.011	0.011	0.000	0.678	0.011	0.000	0.067
F2TH	0.000	0.033	0.044	0.000	0.078	0.000	0.278	1.156
F900	0.000	0.078	0.044	0.000	0.067	0.000	0.122	0.656
FA20	0.000	0.000	0.000	0.000	0.000	0.000	0.000	0.011
FA50	0.000	0.000	0.011	0.000	0.033	0.000	0.033	0.200
FA7X	0.000	0.000	0.011	0.000	0.033	0.000	0.033	0.200
FA8X	0.000	0.022	0.011	0.000	0.011	0.000	0.011	0.100
G150	0.000	0.000	0.000	0.000	0.000	0.000	0.011	0.178
G200	0.000	0.000	0.000	0.000	0.000	0.000	0.011	0.011
G280	0.000	0.000	0.000	0.000	0.000	0.000	0.067	0.156
GA5C	0.000	0.000	0.000	0.000	0.000	0.000	0.000	0.022
GALX	0.000	0.022	0.033	0.011	0.133	0.000	0.122	0.356
GL5T	0.000	0.011	0.044	0.000	0.089	0.000	0.111	0.400
GLDR	0.000	0.000	0.000	0.000	0.000	0.000	0.000	0.011
GLEX	0.000	0.067	0.100	0.000	0.111	0.000	0.289	1.833
GLF3	0.000	0.000	0.011	0.000	0.000	0.000	0.000	0.122
GLF4	0.000	0.156	0.100	0.011	0.189	0.000	0.433	1.844
GLF5	0.000	0.067	0.056	0.000	0.233	0.011	0.444	1.978
GLF6	0.000	0.067	0.044	0.011	0.089	0.000	0.156	0.600
GR4	0.000	0.000	0.000	0.000	0.000	0.000	0.011	0.000
H25B	0.000	0.056	0.033	0.000	0.078	0.000	0.244	1.100
H25C	0.000	0.000	0.011	0.000	0.000	0.000	0.011	0.078

**LAX Average Daily Runway Use By Aircraft Type - 24 Hours
First Quarter 2019**

Arrivals (Average Daily Operations)								
Aircraft Type	06L	06R	07L	07R	24L	24R	25L	25R
GR4	0.000	0.000	0.000	0.000	0.000	0.000	0.011	0.000
H25B	0.000	0.044	0.000	0.078	0.000	0.189	1.144	0.011
H25C	0.000	0.011	0.000	0.000	0.000	0.011	0.078	0.000
HA4T	0.000	0.000	0.000	0.022	0.000	0.022	0.167	0.000
HDJT	0.000	0.000	0.000	0.000	0.000	0.000	0.033	0.000
HUSK	0.000	0.000	0.000	0.000	0.000	0.000	0.011	0.000
HXB	0.000	0.000	0.000	0.000	0.000	0.000	0.011	0.000
J328	0.011	0.022	0.000	0.000	0.000	0.000	0.011	0.000
LGEZ	0.000	0.000	0.000	0.000	0.000	0.000	0.011	0.000
LJ25	0.000	0.000	0.000	0.011	0.000	0.000	0.000	0.000
LJ31	0.000	0.000	0.000	0.000	0.000	0.000	0.011	0.011
LJ35	0.000	0.000	0.000	0.000	0.000	0.000	0.067	0.011
LJ40	0.000	0.022	0.000	0.011	0.000	0.056	0.089	0.000
LJ45	0.011	0.000	0.000	0.067	0.000	0.089	0.322	0.000
LJ55	0.000	0.011	0.000	0.011	0.000	0.011	0.033	0.000
LJ60	0.022	0.011	0.000	0.044	0.000	0.067	0.378	0.022
LJ70	0.000	0.000	0.000	0.000	0.000	0.011	0.022	0.000
LJ75	0.011	0.000	0.000	0.000	0.000	0.011	0.133	0.000
MD11	0.067	0.878	0.089	0.578	0.000	0.044	3.756	0.256
MD87	0.000	0.000	0.000	0.000	0.000	0.011	0.000	0.000
MU2	0.000	0.000	0.000	0.000	0.000	0.011	0.022	0.000
P28A	0.000	0.000	0.000	0.000	0.000	0.000	0.011	0.000
P46T	0.000	0.000	0.000	0.000	0.000	0.011	0.000	0.000
PA22	0.000	0.000	0.000	0.000	0.000	0.000	0.011	0.000
PA23	0.000	0.000	0.000	0.000	0.000	0.000	0.011	0.000
PA24	0.000	0.000	0.000	0.000	0.000	0.011	0.000	0.000
PA31	0.011	0.000	0.000	0.000	0.000	0.000	0.022	0.000
PA34	0.000	0.000	0.000	0.000	0.000	0.011	0.100	0.000
PC12	0.200	0.011	0.000	0.022	0.067	2.211	0.300	0.044
PRM1	0.000	0.011	0.000	0.011	0.000	0.011	0.178	0.000
PTS2	0.000	0.000	0.000	0.000	0.000	0.000	0.022	0.000
RALL	0.000	0.000	0.000	0.000	0.000	0.011	0.000	0.000
ROBN	0.000	0.000	0.000	0.000	0.011	0.000	0.000	0.000
SR22	0.000	0.000	0.000	0.000	0.000	0.000	0.011	0.000
SW4	0.000	0.000	0.000	0.000	0.000	0.011	0.000	0.000
TBM8	0.000	0.000	0.000	0.000	0.000	0.044	0.033	0.000
TVL4	0.000	0.000	0.000	0.000	0.000	0.000	0.011	0.000
WACO	0.011	0.011	0.000	0.022	0.000	0.144	0.044	0.000
WW24	0.000	0.000	0.000	0.000	0.000	0.000	0.022	0.000

Departures (Average Daily Operations)								
Aircraft Type	06L	06R	07L	07R	24L	24R	25L	25R
HA4T	0.000	0.011	0.000	0.000	0.000	0.000	0.078	0.133
HDJT	0.000	0.000	0.000	0.000	0.000	0.000	0.000	0.033
HUSK	0.000	0.000	0.000	0.000	0.011	0.000	0.000	0.000
J328	0.000	0.000	0.000	0.000	0.000	0.000	0.011	0.022
LGEZ	0.000	0.000	0.000	0.000	0.000	0.000	0.000	0.011
LJ25	0.000	0.000	0.011	0.000	0.000	0.000	0.000	0.000
LJ31	0.000	0.000	0.000	0.000	0.000	0.000	0.000	0.022
LJ35	0.000	0.000	0.011	0.000	0.000	0.000	0.000	0.067
LJ40	0.000	0.000	0.011	0.000	0.033	0.000	0.044	0.089
LJ45	0.000	0.033	0.022	0.000	0.011	0.000	0.089	0.278
LJ55	0.000	0.000	0.011	0.000	0.000	0.000	0.011	0.044
LJ60	0.000	0.033	0.011	0.000	0.011	0.000	0.089	0.400
LJ70	0.000	0.011	0.000	0.000	0.000	0.000	0.000	0.022
LJ75	0.000	0.011	0.033	0.000	0.000	0.000	0.033	0.067
MD11	0.000	0.022	0.467	0.044	0.000	0.000	1.011	4.067
MD87	0.000	0.000	0.000	0.000	0.000	0.000	0.011	0.011
MU2	0.000	0.000	0.000	0.000	0.011	0.000	0.000	0.022
P28A	0.000	0.000	0.000	0.000	0.011	0.000	0.000	0.000
P46T	0.000	0.000	0.000	0.000	0.000	0.000	0.011	0.000
PA22	0.000	0.000	0.000	0.000	0.011	0.000	0.000	0.000
PA23	0.000	0.000	0.000	0.000	0.000	0.000	0.000	0.011
PA31	0.000	0.000	0.000	0.000	0.000	0.000	0.011	0.033
PA34	0.000	0.000	0.000	0.000	0.000	0.000	0.022	0.089
PC12	0.000	0.233	0.000	0.000	0.967	0.011	0.056	1.589
PRM1	0.000	0.000	0.011	0.000	0.011	0.000	0.056	0.133
PTS2	0.000	0.000	0.000	0.000	0.000	0.000	0.011	0.011
RALL	0.000	0.000	0.000	0.000	0.000	0.000	0.000	0.011
TBM8	0.000	0.000	0.000	0.000	0.000	0.000	0.000	0.078
TVL4	0.000	0.000	0.000	0.000	0.000	0.000	0.011	0.000
WACO	0.000	0.000	0.000	0.000	0.056	0.000	0.000	0.178
WW24	0.000	0.000	0.000	0.000	0.000	0.000	0.011	0.011

LAX Average Daily Runway Use By Aircraft Type - Night-time (10 pm - 7am) First Quarter 2019

Arrivals (Average Daily Operations)								
Aircraft Type	06L	06R	07L	07R	24L	24R	25L	25R
A20N	0.011	0.000	0.000	0.011	0.000	0.011	0.211	0.000
A21N	0.067	0.078	0.000	0.144	0.000	0.711	1.256	0.056
A306	0.033	0.311	0.000	0.133	0.000	0.011	0.178	0.078
A30B	0.011	0.100	0.000	0.011	0.000	0.000	0.278	0.011
A319	0.189	0.211	0.000	0.311	0.011	1.111	3.056	0.089
A320	0.233	0.556	0.011	0.689	0.011	2.244	6.444	0.178
A321	0.522	3.589	0.044	1.067	0.067	3.856	10.267	0.444
A332	0.144	0.411	0.000	0.089	0.033	1.178	0.467	0.033
A333	0.000	0.011	0.000	0.000	0.000	0.033	0.000	0.000
A343	0.000	0.011	0.000	0.000	0.000	0.000	0.067	0.000
A359	0.011	0.000	0.000	0.000	0.000	0.189	0.000	0.000
A388	0.156	0.889	0.000	0.000	0.111	0.678	0.022	0.000
AC95	0.000	0.000	0.000	0.000	0.000	0.000	0.011	0.000
B350	0.000	0.000	0.000	0.000	0.000	0.000	0.033	0.000
B38M	0.056	0.089	0.000	0.078	0.022	0.378	0.567	0.022
B39M	0.022	0.422	0.022	0.100	0.000	0.022	0.311	0.056
B712	0.100	0.056	0.000	0.011	0.000	0.367	0.011	0.000
B721	0.000	0.000	0.000	0.000	0.000	0.000	0.011	0.000
B733	0.000	0.000	0.000	0.011	0.000	0.011	0.033	0.000
B734	0.000	0.022	0.000	0.044	0.000	0.011	0.278	0.000
B737	0.744	0.856	0.011	0.244	0.156	8.922	1.478	0.000
B738	0.656	1.189	0.000	0.456	0.122	5.733	5.144	0.233
B739	0.189	1.067	0.011	0.300	0.033	1.356	3.078	0.167
B742	0.000	0.044	0.000	0.000	0.000	0.000	0.122	0.011
B744	0.044	0.856	0.011	0.256	0.011	0.089	1.144	0.067
B748	0.011	0.389	0.000	0.244	0.022	0.011	0.567	0.000
B752	0.433	3.111	0.067	0.556	0.333	3.189	2.378	0.211
B753	0.078	0.856	0.011	0.056	0.100	0.467	0.878	0.022
B762	0.011	0.222	0.000	0.089	0.000	0.022	0.422	0.011
B763	0.100	1.844	0.122	0.900	0.033	0.422	2.922	0.389
B764	0.011	0.000	0.000	0.000	0.011	0.067	0.011	0.000
B772	0.011	0.322	0.033	0.011	0.000	0.011	0.344	0.011
B77L	0.156	1.322	0.022	0.489	0.011	0.167	1.411	0.111
B77W	0.178	0.533	0.000	0.078	0.022	0.933	0.522	0.011
B788	0.011	0.244	0.000	0.078	0.000	0.000	0.267	0.033
B789	0.233	2.633	0.044	0.511	0.056	0.444	1.867	0.322
B78X	0.000	0.000	0.000	0.000	0.000	0.011	0.011	0.000
BE20	0.000	0.000	0.011	0.011	0.000	0.022	0.011	0.011
BE30	0.000	0.000	0.000	0.011	0.000	0.089	0.044	0.000
BE35	0.000	0.011	0.000	0.000	0.000	0.000	0.011	0.000

Departures (Average Daily Operations)								
Row Labels	06L	06R	07L	07R	24L	24R	25L	25R
A20N	0.000	0.011	0.000	0.000	0.000	0.000	0.000	0.367
A21N	0.000	0.000	0.078	0.000	0.089	0.000	0.011	0.778
A306	0.000	0.000	0.078	0.000	0.000	0.000	0.011	0.956
A30B	0.000	0.000	0.011	0.000	0.000	0.000	0.011	0.411
A310	0.000	0.000	0.000	0.000	0.000	0.000	0.000	0.011
A319	0.000	0.100	0.367	0.000	1.389	0.011	0.044	4.144
A320	0.000	0.422	1.100	0.011	3.889	0.078	0.178	9.267
A321	0.000	0.533	1.867	0.000	1.933	0.033	0.322	20.833
A332	0.000	0.011	0.178	0.000	1.222	0.000	0.011	0.733
A333	0.000	0.033	0.122	0.000	1.044	0.000	0.000	0.533
A343	0.000	0.000	0.033	0.000	0.156	0.000	0.000	0.067
A346	0.000	0.000	0.000	0.000	0.000	0.000	0.000	0.011
A359	0.000	0.000	0.078	0.000	0.611	0.000	0.000	0.322
A388	0.000	0.256	0.000	0.133	4.011	0.000	0.356	0.000
B350	0.000	0.000	0.000	0.000	0.000	0.000	0.000	0.011
B38M	0.000	0.011	0.044	0.000	0.133	0.000	0.000	0.278
B39M	0.000	0.000	0.178	0.000	0.000	0.000	0.000	1.267
B712	0.000	0.089	0.144	0.011	1.511	0.011	0.000	0.067
B721	0.000	0.000	0.000	0.000	0.000	0.000	0.000	0.011
B733	0.000	0.000	0.000	0.000	0.000	0.000	0.000	0.056
B734	0.000	0.000	0.078	0.000	0.000	0.000	0.022	0.633
B735	0.000	0.000	0.000	0.000	0.000	0.000	0.000	0.011
B737	0.000	0.711	0.600	0.000	7.944	0.044	0.044	2.800
B738	0.000	0.411	0.944	0.000	5.622	0.078	0.111	8.478
B739	0.000	0.389	0.522	0.000	1.278	0.011	0.100	8.178
B742	0.000	0.000	0.111	0.011	0.000	0.000	0.089	0.933
B744	0.000	0.011	0.289	0.000	0.000	0.000	0.133	2.878
B748	0.000	0.011	0.000	0.167	0.178	0.000	1.822	0.000
B752	0.000	0.111	0.511	0.000	2.878	0.022	0.100	4.356
B753	0.000	0.144	0.056	0.000	1.233	0.011	0.033	1.411
B762	0.000	0.000	0.089	0.000	0.000	0.000	0.011	0.844
B763	0.000	0.144	0.656	0.022	0.500	0.000	0.178	6.478
B764	0.000	0.000	0.011	0.000	0.133	0.000	0.000	0.056
B772	0.000	0.067	0.222	0.000	0.333	0.011	0.044	2.689
B773	0.000	0.000	0.022	0.000	0.067	0.000	0.000	0.267
B77L	0.000	0.022	0.244	0.000	0.822	0.000	0.089	2.633
B77W	0.000	0.067	0.967	0.000	2.644	0.000	0.067	8.111
B788	0.000	0.056	0.111	0.000	0.478	0.000	0.011	0.444
B789	0.000	0.122	0.522	0.000	1.689	0.000	0.044	5.978
B78X	0.000	0.000	0.000	0.000	0.000	0.000	0.000	0.033

**LAX Average Daily Runway Use By Aircraft Type - Night-time (10 pm - 7am)
First Quarter 2019**

Arrivals (Average Daily Operations)								
Aircraft Type	06L	06R	07L	07R	24L	24R	25L	25R
BE40	0.011	0.000	0.000	0.000	0.000	0.011	0.000	0.000
BE99	0.022	0.011	0.000	0.033	0.011	0.322	0.267	0.000
C208	0.000	0.011	0.000	0.033	0.000	0.000	0.367	0.011
C210	0.000	0.000	0.000	0.000	0.000	0.011	0.011	0.000
C25A	0.000	0.011	0.000	0.000	0.000	0.000	0.000	0.000
C25B	0.000	0.000	0.000	0.000	0.000	0.000	0.011	0.000
C525	0.000	0.000	0.000	0.011	0.000	0.000	0.033	0.000
C560	0.000	0.022	0.000	0.011	0.000	0.000	0.022	0.000
C56X	0.011	0.044	0.011	0.000	0.000	0.011	0.111	0.000
C650	0.000	0.011	0.000	0.000	0.000	0.000	0.000	0.000
C680	0.011	0.000	0.011	0.000	0.000	0.000	0.056	0.000
C68A	0.000	0.000	0.000	0.000	0.000	0.011	0.044	0.000
C750	0.000	0.033	0.000	0.011	0.000	0.022	0.044	0.000
CL30	0.011	0.056	0.000	0.022	0.000	0.022	0.078	0.011
CL35	0.000	0.000	0.000	0.011	0.000	0.011	0.067	0.011
CL60	0.000	0.022	0.000	0.022	0.000	0.000	0.111	0.011
COL4	0.000	0.000	0.000	0.000	0.000	0.000	0.033	0.000
CRJ2	0.111	0.367	0.000	0.167	0.000	0.544	0.978	0.033
CRJ7	0.067	0.022	0.000	0.067	0.000	0.633	0.400	0.011
DC10	0.000	0.178	0.022	0.078	0.000	0.000	0.133	0.011
DH8A	0.000	0.000	0.000	0.011	0.000	0.000	0.011	0.000
E135	0.000	0.000	0.000	0.000	0.000	0.000	0.011	0.000
E190	0.000	0.000	0.000	0.000	0.000	0.022	0.222	0.000
E35L	0.000	0.011	0.000	0.000	0.000	0.000	0.000	0.000
E50P	0.000	0.011	0.000	0.000	0.000	0.000	0.000	0.000
E545	0.000	0.000	0.000	0.000	0.000	0.000	0.011	0.000
E550	0.000	0.011	0.000	0.000	0.000	0.000	0.044	0.000
E55P	0.000	0.000	0.000	0.011	0.000	0.011	0.100	0.000
E75L	0.544	0.367	0.011	0.333	0.044	3.656	2.822	0.078
E75S	0.011	0.011	0.000	0.011	0.000	0.011	0.011	0.000
F2TH	0.011	0.067	0.011	0.000	0.000	0.011	0.044	0.011
F900	0.000	0.011	0.000	0.000	0.000	0.011	0.011	0.000
FA50	0.000	0.011	0.000	0.000	0.000	0.000	0.022	0.000
FA7X	0.000	0.000	0.000	0.033	0.000	0.000	0.000	0.000
FA8X	0.000	0.000	0.000	0.000	0.000	0.000	0.011	0.000
G150	0.000	0.000	0.000	0.000	0.000	0.000	0.022	0.000
GALX	0.000	0.000	0.000	0.011	0.000	0.000	0.044	0.000
GL5T	0.000	0.011	0.000	0.000	0.000	0.000	0.000	0.000
GLEX	0.000	0.056	0.000	0.033	0.000	0.011	0.100	0.000

Departures (Average Daily Operations)								
Row Labels	06L	06R	07L	07R	24L	24R	25L	25R
BE20	0.000	0.022	0.000	0.000	0.022	0.000	0.000	0.022
BE30	0.000	0.078	0.022	0.000	0.033	0.000	0.000	0.444
BE35	0.000	0.000	0.000	0.000	0.000	0.000	0.011	0.011
BE36	0.000	0.000	0.000	0.000	0.000	0.000	0.000	0.011
BE40	0.000	0.000	0.000	0.000	0.000	0.000	0.000	0.056
BE99	0.000	0.011	0.056	0.000	0.033	0.000	0.022	0.556
Boeing 757-324 (w)	0.000	0.000	0.000	0.000	0.000	0.000	0.000	0.011
C208	0.000	0.000	0.044	0.000	0.000	0.000	0.000	0.133
C25A	0.000	0.000	0.000	0.000	0.000	0.000	0.000	0.022
C25B	0.000	0.000	0.000	0.000	0.000	0.000	0.000	0.033
C25C	0.000	0.000	0.000	0.000	0.000	0.000	0.000	0.011
C525	0.000	0.000	0.022	0.000	0.000	0.000	0.000	0.022
C560	0.000	0.000	0.000	0.000	0.000	0.000	0.000	0.078
C56X	0.000	0.011	0.011	0.000	0.000	0.000	0.000	0.144
C650	0.000	0.000	0.000	0.000	0.000	0.000	0.000	0.022
C680	0.000	0.011	0.000	0.000	0.011	0.000	0.000	0.144
C68A	0.000	0.000	0.011	0.000	0.000	0.000	0.000	0.056
C750	0.000	0.000	0.011	0.000	0.011	0.000	0.000	0.089
CL30	0.000	0.000	0.011	0.000	0.011	0.000	0.000	0.167
CL35	0.000	0.000	0.000	0.000	0.022	0.000	0.000	0.100
CL60	0.000	0.022	0.033	0.000	0.022	0.000	0.011	0.189
COL4	0.000	0.000	0.011	0.000	0.000	0.000	0.000	0.022
CRJ2	0.000	0.011	0.222	0.000	0.556	0.011	0.011	0.944
CRJ7	0.000	0.056	0.022	0.000	0.167	0.000	0.000	0.533
CRJ9	0.000	0.000	0.000	0.000	0.000	0.000	0.000	0.011
DC10	0.000	0.000	0.056	0.000	0.000	0.000	0.000	0.389
DH8A	0.000	0.000	0.000	0.000	0.000	0.000	0.000	0.011
E135	0.000	0.000	0.000	0.000	0.000	0.000	0.000	0.022
E190	0.000	0.011	0.000	0.000	0.122	0.011	0.011	0.178
E50P	0.000	0.000	0.000	0.000	0.000	0.000	0.022	0.022
E550	0.000	0.000	0.000	0.000	0.000	0.000	0.000	0.067
E55P	0.000	0.000	0.000	0.000	0.000	0.000	0.000	0.056
E75L	0.000	0.278	0.756	0.000	3.544	0.000	0.033	5.000
E75S	0.000	0.011	0.000	0.000	0.000	0.000	0.000	0.033
F2TH	0.000	0.000	0.022	0.000	0.000	0.000	0.000	0.156
F900	0.000	0.000	0.011	0.000	0.000	0.000	0.000	0.056
FA50	0.000	0.000	0.011	0.000	0.000	0.000	0.000	0.011
FA7X	0.000	0.000	0.011	0.000	0.000	0.000	0.000	0.011
G150	0.000	0.000	0.000	0.000	0.000	0.000	0.000	0.044

**LAX Average Daily Runway Use By Aircraft Type - Night-time (10 pm - 7am)
First Quarter 2019**

Arrivals (Average Daily Operations)								
Aircraft Type	06L	06R	07L	07R	24L	24R	25L	25R
GLF3	0.011	0.000	0.000	0.011	0.000	0.000	0.022	0.000
GLF4	0.000	0.100	0.000	0.022	0.000	0.011	0.156	0.022
GLF5	0.011	0.044	0.011	0.033	0.000	0.011	0.167	0.000
GLF6	0.000	0.022	0.000	0.000	0.000	0.011	0.067	0.000
H25B	0.000	0.044	0.000	0.033	0.000	0.000	0.167	0.000
H25C	0.000	0.011	0.000	0.000	0.000	0.000	0.000	0.000
HA4T	0.000	0.000	0.000	0.011	0.000	0.000	0.000	0.000
J328	0.000	0.022	0.000	0.000	0.000	0.000	0.000	0.000
LJ35	0.000	0.000	0.000	0.000	0.000	0.000	0.000	0.011
LJ40	0.000	0.022	0.000	0.000	0.000	0.000	0.000	0.000
LJ45	0.000	0.000	0.000	0.011	0.000	0.000	0.011	0.000
LJ55	0.000	0.011	0.000	0.011	0.000	0.000	0.000	0.000
LJ60	0.000	0.011	0.000	0.011	0.000	0.000	0.044	0.000
MD11	0.067	0.878	0.089	0.411	0.000	0.022	1.011	0.200
MU2	0.000	0.000	0.000	0.000	0.000	0.000	0.011	0.000
PC12	0.011	0.011	0.000	0.000	0.000	0.022	0.056	0.000
PRM1	0.000	0.011	0.000	0.000	0.000	0.000	0.033	0.000
WACO	0.011	0.011	0.000	0.022	0.000	0.000	0.033	0.000

Departures (Average Daily Operations)								
Row Labels	06L	06R	07L	07R	24L	24R	25L	25R
G280	0.000	0.000	0.000	0.000	0.000	0.000	0.000	0.022
GA5C	0.000	0.000	0.000	0.000	0.000	0.000	0.000	0.011
GALX	0.000	0.000	0.000	0.000	0.011	0.000	0.000	0.011
GL5T	0.000	0.000	0.011	0.000	0.000	0.000	0.000	0.011
GLEX	0.000	0.000	0.011	0.000	0.000	0.000	0.011	0.156
GLF3	0.000	0.000	0.011	0.000	0.000	0.000	0.000	0.056
GLF4	0.000	0.011	0.022	0.000	0.011	0.000	0.022	0.289
GLF5	0.000	0.011	0.000	0.000	0.000	0.000	0.022	0.289
GLF6	0.000	0.000	0.011	0.000	0.022	0.000	0.000	0.067
H25B	0.000	0.022	0.000	0.000	0.011	0.000	0.000	0.111
H25C	0.000	0.000	0.000	0.000	0.000	0.000	0.000	0.011
HA4T	0.000	0.000	0.000	0.000	0.000	0.000	0.000	0.044
HDJT	0.000	0.000	0.000	0.000	0.000	0.000	0.000	0.011
J328	0.000	0.000	0.000	0.000	0.000	0.000	0.000	0.011
LGEZ	0.000	0.000	0.000	0.000	0.000	0.000	0.000	0.011
LJ35	0.000	0.000	0.011	0.000	0.000	0.000	0.000	0.000
LJ40	0.000	0.000	0.000	0.000	0.000	0.000	0.000	0.022
LJ45	0.000	0.000	0.011	0.000	0.000	0.000	0.000	0.022
LJ55	0.000	0.000	0.011	0.000	0.000	0.000	0.000	0.011
LJ60	0.000	0.000	0.000	0.000	0.000	0.000	0.000	0.044
LJ70	0.000	0.000	0.000	0.000	0.000	0.000	0.000	0.011
MD11	0.000	0.011	0.122	0.000	0.000	0.000	0.033	1.633
MD87	0.000	0.000	0.000	0.000	0.000	0.000	0.000	0.011
PA34	0.000	0.000	0.000	0.000	0.000	0.000	0.000	0.022
PC12	0.000	0.011	0.000	0.000	0.044	0.000	0.000	0.078
PRM1	0.000	0.000	0.000	0.000	0.000	0.000	0.011	0.044
TBM8	0.000	0.000	0.000	0.000	0.000	0.000	0.000	0.022
WACO	0.000	0.000	0.000	0.000	0.022	0.000	0.000	0.067

Summary of Actions Taken by LAWA to Comply with the Specific Requirements Imposed by Conditions of the Current Noise Variance for Los Angeles International Airport

First Quarter 2019

The Los Angeles World Airports (LAWA) continuously works to operate an airport that maintains the highest possible environmental quality of life for surrounding communities. To that end, LAWA continues to take the following actions:

- LAWA continues to implement its Aircraft Noise Mitigation Program (ANMP), designed to fund the mitigation of all incompatible land uses within the noise impact boundary as defined in the State Noise Standards. LAWA updates the ANMP report periodically to ensure that it reasonably represents the mitigation and funding programs that are in place.
- With each second quarter Quarterly Report, LAWA submits an annual update of the ANMP. This update includes the number of dwellings acoustically insulated, the cost of the program, the anticipated funding availability, and the anticipated completion date of the project.
- LAWA continues to monitor and enforce, as appropriate, all of its informal noise abatement procedures in place at LAX, including but not limited to the early turn program, preferential runway use procedures and over ocean operations procedures.
- LAWA continues to work with Federal Aviation Administration and pilots to improve compliance with its “no turns before the shoreline” policy.
- LAWA completed and evaluated the Siting Study pertaining to two Ground Run-up Enclosures.
- LAWA analyzed the implementation of the existing Preferential Runway Use Policy and submitted a report evaluating compliance and implementation of the policy, including recommendations for any possible improvements.

- LAWA continues to submit to the State of California Department of Transportation (CalTrans) and the County of Los Angeles the required Quarterly Reports. These reports depict the noise impact area, and report on the incompatible land uses along with the daily and annual CNEL values at each monitoring station.
- LAWA has not submitted “any proposed new or modified noise monitoring plan or system” to Caltrans during this Variance period and, therefore, has not needed to provide a copy to the County. The existing airport noise and operations monitoring system was certified by Caltrans in February 2010 and the County was provided with all submitted documentation at that time. The County continues to review and audit the data LAWA submits in each Quarterly Report.
- LAWA continues to include tabular data and graphical illustrations with each Quarterly Report describing and comparing the level and type of usage for each runway at LAX during the quarter. In addition, LAWA is now including tabular data describing the daily average number of arrivals and departures by aircraft type on each runway during all hours and during nighttime hours from 10 pm to 7 am.
- LAWA continues to monitor and enforce its maintenance run-up curfew (2300-0600). When applicable, LAWA will include with each Quarterly Report, information regarding monitoring and enforcement activities undertaken during the quarter. There were no enforcement actions reported during the first quarter 2019.
- LAWA continues to provide the LAX Noise Comment Phone Line with an option for callers to have a live answer as available, and continues to retrieve any complaint messages and provide appropriate responses in a timely manner.
- LAWA’s aircraft noise and operations monitoring system continues to measure noise levels for all operations at LAX, including the Airbus A380 and the Boeing 747-800. This data is currently available and was presented to the LAX/Community Noise Roundtable and the LAX Area Advisory Committee.