

California State Airport Noise Standards Quarterly Report

Fourth Quarter 2013



LAX

*Los Angeles
World Airports*

Los Angeles World Airports
Los Angeles International Airport

April 18, 2014

TABLE OF CONTENTS

California State Airport Noise Standards Quarterly Report

1. Division of Aeronautics Form 617
2. Incompatible Land Use Data
3. Daily Aircraft CNEL Data
4. Runway Utilization Report
 - Summary of Runway Use
 - Summary of Runway Flow
5. Summary of Actions

Attachment

Noise contour map

**SUMMARY OF STATISTICAL INFORMATION
FOR
CALIFORNIA DEPARTMENT OF TRANSPORTATION**

Los Angeles International Airport
Fourth Quarter 2013

1. Size of Noise Impact Area as defined in the Noise Standards (California Code of Regulations, Title 21, Chapter 2.5, Subchapter 6):

803.3 Acres

2. Estimated number of dwelling units included in the Noise Impact Area as defined in the Noise Standards:

11,332

3. Estimated number of people residing within the Noise Impact Area as defined in the Noise Standards:

38,989

4. Identification of aircraft type having highest takeoff noise level operating at this airport together with estimated number of operations by this aircraft type during the calendar quarter reporting period:

B747: 4,031

5. Total number of aircraft operations during the calendar quarter*:

155,304

6. Number of Air Carrier operations during the calendar quarter: (Not Mandatory)*

127,499

7. Percentage of Air Carrier operations by aircraft certificated under Federal Aviation Regulation (FAR) Part 36, Stage III. (Not Mandatory)

100 %

8. Estimated number of operations by General Aviation aircraft during the calendar quarter: (Not Mandatory)*

4,534

9. Estimated number of operations by Military aircraft during the calendar quarter: (Not Mandatory)*

543

LOS ANGELES INTERNATIONAL AIRPORT

Incompatible Land Use

Annual Noise Impact Accumulated by Noise Zone: CNEL 65, 70, and 75 +

4Q13	Total Cumulative Noise Impact Areas - All Jurisdictions											
	<i>CNEL 65 dB and Above</i>				<i>CNEL 70 dB and Above</i>				<i>CNEL 75 dB and Above</i>			
	Land Use	Acres	Dwelling Units	Parcels	Population	Acres	Dwelling Units	Parcels	Population	Acres	Dwelling Units	Parcels
Single Family	396.3	2,785	2,841	9,805	76.9	526	533	2,297	2.8	13	13	68
Multi-Family	381.8	8,527	2,634	29,132	107.2	2,355	634	9,488	5.0	51	16	277
Mobile Home	1.0	1	3	3	0.0	0	0	0	0.0	0	0	0
Schools	2.1	0	2	0	0.0	0	0	0	0.0	0	0	0
Churches	21.5	19	44	49	2.4	0	2	0	0.0	0	0	0
Hospitals	0.6	0	2	0	0.0	0	0	0	0.0	0	0	0
Total Incompatible	803.3	11,332	5,526	38,989	186.5	2,881	1,169	11,785	7.8	64	29	344

Note: Parcels and dwelling units may not match for single family land uses due to subdivision.
Parcels for multifamily land uses reflect only the common area parcel, except for condominiums.

Report Date: 04/17/2014

LOS ANGELES INTERNATIONAL AIRPORT

Incompatible Land Use

Annual Noise Impact Accumulated by Noise Zone: CNEL 65, 70, and 75 +

4Q13	Total Cumulative Noise Impact Areas - Athens											
	<i>CNEL 65 dB and Above</i>				<i>CNEL 70 dB and Above</i>				<i>CNEL 75 dB and Above</i>			
	Land Use	Acres	Dwelling Units	Parcels	Population	Acres	Dwelling Units	Parcels	Population	Acres	Dwelling Units	Parcels
Single Family	45.7	341	363	1,210	0.0	0	0	0	0.0	0	0	0
Multi-Family	54.3	1,109	354	3,839	0.0	0	0	0	0.0	0	0	0
Mobile Home	0.0	0	0	0	0.0	0	0	0	0.0	0	0	0
Schools	0.0	0	0	0	0.0	0	0	0	0.0	0	0	0
Churches	1.6	4	7	14	0.0	0	0	0	0.0	0	0	0
Hospitals	0.0	0	0	0	0.0	0	0	0	0.0	0	0	0
Total Incompatible	101.6	1,454	724	5,063	0.0	0	0	0	0.0	0	0	0

Note: Parcels and dwelling units may not match for single family land uses due to subdivision.
Parcels for multifamily land uses reflect only the common area parcel, except for condominiums.

Report Date: 04/17/2014

LOS ANGELES INTERNATIONAL AIRPORT

Incompatible Land Use

Annual Noise Impact Accumulated by Noise Zone: CNEL 65, 70, and 75 +

4Q13	Total Cumulative Noise Impact Areas - Del Aire											
	<i>CNEL 65 dB and Above</i>				<i>CNEL 70 dB and Above</i>				<i>CNEL 75 dB and Above</i>			
	Land Use	Acres	Dwelling Units	Parcels	Population	Acres	Dwelling Units	Parcels	Population	Acres	Dwelling Units	Parcels
Single Family	0.0	0	0	0	0.0	0	0	0	0.0	0	0	0
Multi-Family	0.0	0	0	0	0.0	0	0	0	0.0	0	0	0
Mobile Home	0.0	0	0	0	0.0	0	0	0	0.0	0	0	0
Schools	0.0	0	0	0	0.0	0	0	0	0.0	0	0	0
Churches	0.0	0	0	0	0.0	0	0	0	0.0	0	0	0
Hospitals	0.0	0	0	0	0.0	0	0	0	0.0	0	0	0
Total Incompatible	0.0	0	0	0	0.0	0	0	0	0.0	0	0	0

Note: Parcels and dwelling units may not match for single family land uses due to subdivision.
 Parcels for multifamily land uses reflect only the common area parcel, except for condominiums.

Report Date: 04/17/2014

LOS ANGELES INTERNATIONAL AIRPORT

Incompatible Land Use

Annual Noise Impact Accumulated by Noise Zone: CNEL 65, 70, and 75 +

4Q13	Total Cumulative Noise Impact Areas - City of El Segundo											
	<i>CNEL 65 dB and Above</i>				<i>CNEL 70 dB and Above</i>				<i>CNEL 75 dB and Above</i>			
	Land Use	Acres	Dwelling Units	Parcels	Population	Acres	Dwelling Units	Parcels	Population	Acres	Dwelling Units	Parcels
Single Family	97.6	651	654	1,690	14.0	90	90	227	0.0	0	0	0
Multi-Family	30.4	861	350	1,858	9.1	286	110	626	0.0	0	0	0
Mobile Home	0.4	1	1	3	0.0	0	0	0	0.0	0	0	0
Schools	0.0	0	0	0	0.0	0	0	0	0.0	0	0	0
Churches	0.7	0	2	0	0.0	0	0	0	0.0	0	0	0
Hospitals	0.0	0	0	0	0.0	0	0	0	0.0	0	0	0
Total Incompatible	129.1	1,513	1,007	3,551	23.1	376	200	853	0.0	0	0	0

Note: Parcels and dwelling units may not match for single family land uses due to subdivision.
Parcels for multifamily land uses reflect only the common area parcel, except for condominiums.

Report Date: 04/17/2014

LOS ANGELES INTERNATIONAL AIRPORT

Incompatible Land Use

Annual Noise Impact Accumulated by Noise Zone: CNEL 65, 70, and 75 +

4Q13	Total Cumulative Noise Impact Areas - City of Inglewood											
	<i>CNEL 65 dB and Above</i>				<i>CNEL 70 dB and Above</i>				<i>CNEL 75 dB and Above</i>			
	Land Use	Acres	Dwelling Units	Parcels	Population	Acres	Dwelling Units	Parcels	Population	Acres	Dwelling Units	Parcels
Single Family	133.7	931	952	3,245	12.3	85	88	378	0.0	0	0	0
Multi-Family	172.0	3,821	1,011	13,429	40.2	1,061	189	4,521	0.0	0	0	0
Mobile Home	0.6	0	2	0	0.0	0	0	0	0.0	0	0	0
Schools	2.1	0	2	0	0.0	0	0	0	0.0	0	0	0
Churches	14.0	12	25	24	2.1	0	1	0	0.0	0	0	0
Hospitals	0.6	0	2	0	0.0	0	0	0	0.0	0	0	0
Total Incompatible	323.0	4,764	1,994	16,698	54.6	1,146	278	4,899	0.0	0	0	0

Note: Parcels and dwelling units may not match for single family land uses due to subdivision.
Parcels for multifamily land uses reflect only the common area parcel, except for condominiums.

Report Date: 04/17/2014

LOS ANGELES INTERNATIONAL AIRPORT

Incompatible Land Use

Annual Noise Impact Accumulated by Noise Zone: CNEL 65, 70, and 75 +

4Q13	Total Cumulative Noise Impact Areas - Lennox											
	<i>CNEL 65 dB and Above</i>				<i>CNEL 70 dB and Above</i>				<i>CNEL 75 dB and Above</i>			
	Land Use	Acres	Dwelling Units	Parcels	Population	Acres	Dwelling Units	Parcels	Population	Acres	Dwelling Units	Parcels
Single Family	81.2	567	574	2,725	50.6	351	355	1,692	2.8	13	13	68
Multi-Family	85.2	1,348	487	6,295	53.8	795	317	3,827	5.0	51	16	277
Mobile Home	0.0	0	0	0	0.0	0	0	0	0.0	0	0	0
Schools	0.0	0	0	0	0.0	0	0	0	0.0	0	0	0
Churches	1.6	1	3	4	0.3	0	1	0	0.0	0	0	0
Hospitals	0.0	0	0	0	0.0	0	0	0	0.0	0	0	0
Total Incompatible	168.0	1,916	1,064	9,024	104.7	1,146	673	5,519	7.8	64	29	344

Note: Parcels and dwelling units may not match for single family land uses due to subdivision.
Parcels for multifamily land uses reflect only the common area parcel, except for condominiums.

Report Date: 04/17/2014

LOS ANGELES INTERNATIONAL AIRPORT

Incompatible Land Use

Annual Noise Impact Accumulated by Noise Zone: CNEL 65, 70, and 75 +

4Q13	Total Cumulative Noise Impact Areas - South and South East LA											
	<i>CNEL 65 dB and Above</i>				<i>CNEL 70 dB and Above</i>				<i>CNEL 75 dB and Above</i>			
	Land Use	Acres	Dwelling Units	Parcels	Population	Acres	Dwelling Units	Parcels	Population	Acres	Dwelling Units	Parcels
Single Family	26.1	209	210	727	0.0	0	0	0	0.0	0	0	0
Multi-Family	17.6	450	112	1,593	0.0	0	0	0	0.0	0	0	0
Mobile Home	0.0	0	0	0	0.0	0	0	0	0.0	0	0	0
Schools	0.0	0	0	0	0.0	0	0	0	0.0	0	0	0
Churches	2.4	1	6	4	0.0	0	0	0	0.0	0	0	0
Hospitals	0.0	0	0	0	0.0	0	0	0	0.0	0	0	0
Total Incompatible	46.1	660	328	2,325	0.0	0	0	0	0.0	0	0	0

Note: Parcels and dwelling units may not match for single family land uses due to subdivision.
Parcels for multifamily land uses reflect only the common area parcel, except for condominiums.

Report Date: 04/17/2014

LOS ANGELES INTERNATIONAL AIRPORT

Incompatible Land Use

Annual Noise Impact Accumulated by Noise Zone: CNEL 65, 70, and 75 +

4Q13	Total Cumulative Noise Impact Areas - Westchester/Playa Del Rey											
	<i>CNEL 65 dB and Above</i>				<i>CNEL 70 dB and Above</i>				<i>CNEL 75 dB and Above</i>			
	Land Use	Acres	Dwelling Units	Parcels	Population	Acres	Dwelling Units	Parcels	Population	Acres	Dwelling Units	Parcels
Single Family	12.0	86	88	209	0.0	0	0	0	0.0	0	0	0
Multi-Family	22.0	938	320	2,118	4.0	213	18	514	0.0	0	0	0
Mobile Home	0.0	0	0	0	0.0	0	0	0	0.0	0	0	0
Schools	0.0	0	0	0	0.0	0	0	0	0.0	0	0	0
Churches	1.3	1	1	2	0.0	0	0	0	0.0	0	0	0
Hospitals	0.0	0	0	0	0.0	0	0	0	0.0	0	0	0
Total Incompatible	35.3	1,025	409	2,329	4.0	213	18	514	0.0	0	0	0

Note: Parcels and dwelling units may not match for single family land uses due to subdivision.
Parcels for multifamily land uses reflect only the common area parcel, except for condominiums.

Report Date: 04/17/2014

October	AIR1	PDR1	PDR2	PDR3*	ESG1	ESG2	ESG3	ESG4*	ESG5	DEL1*	WCH1*	WCH2	WCH3	WCH4*	WCH5	WCH6	ING1	ING2	ING3	ING4	ING6	ING5*	ING7*	ING8	LNX1	LNX2	LNX3	LNX4	ATH1*	ATH2	SLA1	SLA2*	SLA3	SLA4*	SLA5	SLA6*	SLA7	SLA8*	SLA9*
1 Tue	79	67	61	57		69	61	55	57	52	58	64	61	57	75	62	61	66	66		69	61	--	59	74	60	65	67	58	65	65	58	60	59	63	60	64	63	60
2 Wed	80	68	62	56		68	61	56	58	51	53	60	58	53	75	64	61	67	68		69	64	--	61	75	67	64	69	60	65	65	59	64	60	63	62	63	60	62
3 Thu	80	68	62	59		69	63	58	60	44	55	60	59	54	75	63	61	66	67		70	59	--	60	75	62	62	65	60	66	65	59	61	59	64	62	64	60	62
4 Fri	79	66	61	58		69	64	60	62	53	55	61	62	60	73	62	60	66	66		69	57	--	59	73	62	62	64	58	65	63	57	59	58	62	60	63	59	59
5 Sat	79	64	57	52		66	63	59	64	57	54	60	62	57	72	60	58	63	62		66	55	--	59	72	60	61	62	56	64	60	56	58	54	63	62	62	62	57
6 Sun	78	65	59	54		66	63	62	63	56	56	63	62	59	73	62	58	64	64		67	57	--	57	73	62	61	64	56	62	62	55	58	55	60	60	61	59	57
7 Mon	79	67	61	57		67	62	61	60	50	55	62	64	61	73	62	61	65	67		68	58	--	60	73	63	62	65	58	64	64	58	60	58	62	60	64	59	60
8 Tue	79	68	62	57		69	62	58	57	47	53	61	60		75	63	60	66	67		68	56	--	59	73	60	61	64	59	65	65	58	60	59	62	63	63	60	61
9 Wed	79	68	62	56		69	65	58	59	52	55	61	60		75	64	62	67	68		70	59	--	61	75	64	64	65	61	66	66	60	62	60	64	62	64	61	62
10 Thu	80	69	63	59		68	63	59	61	53	56	61	59	56	75	63	61	66	67		69	59	--	61	74	62	61	65	61	66	65	61	62	60	64	62	64	61	61
11 Fri	80	68	62	57		68	64	58	61	52	56	62	62	59	74	63	61	66	68		69	59	--	62	74	62	62	65	60	66	65	59	61	60	63	64	64	60	62
12 Sat	79	68	61	56		68	62	56	58	51	56	63	60	60	75	63	60	66	67		68	57	--	59	74	60	61	64		65	65	58	60	59	64	61	63	62	60
13 Sun	79	69	64	57		67	60	56	57	43	55	61	61	56	75	64	60	67	67		68	57	--	59	73	60	60	64	58	65	65	59	60	60	62	60	63	59	62
14 Mon	80	68	64	58		68	63	63	61	55	58	66	63	62	75	64	61	66	66		68	58	--	59	73	61	62	64	58	65	64	57	59	59	62	60	62	59	59
15 Tue	80	66	60	57		67	64	60	64	58	58	63	61	62	73	62	59	64	65		68	57	--	60	73	60	61	63	58	64	63	56	59	57	62	62	62	58	59
16 Wed	80	65	60	55		67	64	60	65	59	54	60	61	61	74	62	59	64	65		67	57	--	57	72	61	60	63	58	63	63	56	58	57	61	62	61	57	59
17 Thu	79	67	61	57		68	64	61	63	54	56	63	62	57	76	64	61	66	67		70	59	--	62	75	62	62	65	59	65	65	58	61	59	63	61	63	59	61
18 Fri	80	68	62	58		68	65	63	62	53	57	64	64	63	75	63	61	66	67		70	58	--	62	74	61	63	66	59	65	64	58	61	58	65	61	63	63	61
19 Sat	80	66	61	56		67	63	63	60	50	56	63	63	61	73	62	59	64	65		69	58	--	59	74	61	62	65	58	64	62	56	60	56	62	60	62		58
20 Sun	79	69	62	57		67	60	56	57	45	55	61	60	58	75	63	60	66	67		69	57	--	60	75	63	62	65	59	66	65	58	61	59	63	65	63	59	60
21 Mon	79	68	62	59		67	61	55	57	47	53	60	61	57	76	64	61	66	67		69	58	--	59	74	63	61	65	58	65	65	58	60	59	63	62	63	62	60
22 Tue	79	69	62	57		67	62	56	58	50	55	61	63	62	75	63	60	66	67		71	58	--	60	75	62	62	65	60	66	64	58	62	58	64	62	64	61	60
23 Wed	79	68	62	57		69	63	57	59	43	54	59	57		75	63	61	67	68		69	57	--	60	74	61	62	65	60	66	66	60	61	60	64	61	64	62	61
24 Thu	79	68	62	58		68	63	57	59	46	54	59	62	58	76	64	61	67	68		70	58	--	61	75	62	63	66	60	66	66	59	62	60	64	62	65	60	62
25 Fri	79	69	63	59		69	64	58	60	53	55	59	60	57	75	63	62	66	67		69	59	--	61	75	62	62	65	59	65	65	59	61	59	63	60	65	62	61
26 Sat	79	67	60	56		66	61	56	56	50	55	61	59	57	74	62	59	65	66		70	59	--	61	75	64	62	65	59	67	64	57	61	57	63	64	64		60
27 Sun	78	68	62	56		66	61	59	59	43	55	62	61	56	77	65	62	68	69		69	57	--	60	74	62	61	65	59	66	66	59	61	60	63	61	63	61	62
28 Mon	77	69	64	58		67	62	57	59	47	55	61	61	58	76	65	62	68	69		71	59	--	63	75	65	63	66	60	67	66	61	62	61	64	62	65	61	63
29 Tue	78	67	61	57		68	63	58	60	49	55	61	61	61	74	63	62	67	68		70	59	--	61	74	62	62	65	60	66	65	60	61	59	64	62	64	61	61
30 Wed	80	68	63	57		68	63	59	62	54	56	62	62	59	74	63	61	66	67		69	58	--	60	74	62	62	65	61	66	65	59	62	59	64	62	65	61	61
31 Thu	80	67	61	58		68	64	61	63	57	57	64	62	60	74	63	61	66	66		69	58	--	59	73	61	63	65	59	64	64	58	60	59	62	62	63	59	61

* = Not Required for Title 21 Reporting

November	AIR1	PDR1	PDR2	PDR3*	ESG1	ESG2	ESG3	ESG4*	ESG5	DEL1*	WCH1*	WCH2	WCH3	WCH4*	WCH5	WCH6	ING1	ING2	ING3	ING4	ING6	ING5*	ING7*	ING8	LNX1	LNX2	LNX3	LNX4	ATH1*	ATH2	SLA1	SLA2*	SLA3	SLA4*	SLA5	SLA6*	SLA7	SLA8*	SLA9*
1 Fri	80	67	60	56		69		66		60	58	65	63	61	74	62	59	64	65		68	58	--	59	75	62	62	65	59	65	63	57	60	58	63	62	63	62	59
2 Sat	81	66	61	55		67	64	59	63	55	56	63	60	54	73	62	59	64	66		69	57	--	60	75	60	61	65	59	67	64	57	60	59	63	64	63	64	60
3 Sun	80	68	62	57		67	60	54	56	41	55	61	58	56	74	63	59	66	67		70	57	--	59	73	61	62	64	59	65	65	59	60	59	63	62	63	60	62
4 Mon	79	69	63	58		68	63	58	58	49	53	60	62	57	74	63	60	66	67		70	59	--	60	74	61	62	65	58	65	65	58	60	59	63	61	63	60	61
5 Tue	79	66	60	56		69	64	62	63	54	56	63	61	57	73	62	59	64	65		68	58	--	58	73	60	61	64	58	64	63	56	60	58	62	62	62	60	60
6 Wed	79	65	59	54		67	65	61	66	59	54	60	58	54	73	61	59	64	64		67	54	--	58	71	61	59	61	58	63	62	58	57	56	61	66	61	58	58
7 Thu	79	66	60	56		67	65	63	66	59	56	63	64	57	74	63	61	65	66		67	55	--	57	73	60	61	63	57	63	63	57	59	57	61	63	61	59	60
8 Fri	80	68	63	59		68	63	59	60	51	58	65	62	60	75	64	60	67	67		69	57	--	60	73	61	61	64	59	65	65	58	60	59	62	63	63	58	61
9 Sat	81	67	62			67	62	57	58	50	54	60	57	54	75	63	60	66	67		70	57	--	63	73	66	61	64	58	66	65	59	60	58	62	61	63	61	59
10 Sun	79	68	62	57		68	63	62	61	51	56	64	64	59	74	62	60	66	66		68	57	--	59	73	62	62	65	58	65	64	58	60	59	62	61	63	59	60
11 Mon	79	68	63	58		68	63	60	61	55	58	64	65	61	74	63	60	66	66		68	59	--	60	74	62	62	64	58	65	64	57	60	58	63	63	63	60	59
12 Tue	79	67	61	58		68	65	63	66	58	56	64	63	60	75	63	59	65	66		68	56	--	58	72	61	62	63	59	63	63	57	58	58	62	65	62	62	59
13 Wed	79	65	59	55		67	64	60	65	59	54	61	64	56	73	61	58	63	64		66	55	--	56	71	64	59	61	58	62	62	58	57	57	61	64	60	61	59
14 Thu	78	67	61	58		67	62	59	62	57	56	63	64	58	74	63	62	66	67		68	55	--	59	72	62	61	63	57	64	65	59	59	59	62	64	62	62	60
15 Fri	81	68	63	58		68	62	55	57	45	54	63	61	57	74	62	60	66	67		69	60	--	60	74	61	62	64	60	66	64	58	61	59	63	61	64	61	61
16 Sat	79	68	62	56		68	61	56	56	44	54	61	59	57	73	61	60	64	65		69	58	--	59	73	60	61	64	59	67	63	57	61	58	63	62	63	59	60
17 Sun	78	69	63	57		67	61	55	57	47	57	63	65	61	74	63	60	66	67		69	58	--	60	74	62	62	65	60	65	65	59	61	60	63	63	63	60	61
18 Mon	77	68	62	57		67	62	58	59	48	54	62	62	59	74	64	61	66	67		69	58	--	60	74	62	61	65	60	65	65	59	61	59	63	61	64	61	61
19 Tue	79	68	62	57		68	62	57	58	47	55	62	60	57	74	63	60	66	67		69	58	--	60	74	61	62	65	60	66	65	59	61	60	64	61	64	60	61
20 Wed	80	68	62	58		69	62	58	59	42	56	64	60	56	74	62	59	65	66		68	56	--	59	74	61	60	64	59	65	65	59	60	58	63	60	63	59	60
21 Thu	80	69	63	58		68	62	59	60	56	56	63	61	55	76	64	64	67	68		71	63	--	65	76	71	66	69	62	67	66	62	64	60	65	63	65	62	62
22 Fri	80	69	63	57		68	64	60	63	51	53	59	58		74	63	60	66	67		69	58	--	61	74	62	61	65	57	66	65	59	61	60	63	62	64	61	61
23 Sat	80	68	62	54		69	65	61	63	58	53	58	56	53	73	62	61	65	66		69	59	--	60	74	61	62	65	61		64	58	61	59	64	62	64	60	61
24 Sun	78	67	62	56		68	63	60	63	55	56	62	60	60	73	62	60	65	66		68	57	--	60	73	60	61	64	59	65	64	58	60	59	63	62	63	60	62
25 Mon	79	68	63	59		68	64	62	64	56	58	65	62	59	74	64	60	66	66		69	58	--	60	74	61	61	64	59	66	64	59	61	59	63	63	63	61	60
26 Tue	80	68	63	59		68	65	62	66	60	60	64	60	57	74	62	60	64	66		68	56	--	58	73	60	60	63	58	64	64	57	60	59	63	63	63	59	59
27 Wed	80	68	63	59		68	63	60	64	54	58	65	63	60	73	62	59	65	65		69	57	--	60	73	62	61	64	59	65	63	60	61	59	64	64	63	60	60
28 Thu	79	65	60	55		67	60	55	58	46	54	63	60	57	71	59	57	62	63		67	56	--	58	72	59	59	63	58	65	61	56	59	57	61	60	61	57	58
29 Fri	79	68	62	57		68	65	62	63	57	55	62	59	55	73	61	59	64	65		68	56	--	59	73	60	60	64	59	65	63	59	60	58	63	61	63	58	59
30 Sat	79	67	61	55		68	64	62	64	59	54	63	62	57	74	63	60	66	67		69	58	--	60	74	62	64	65	60	66	65	59	61	59	64	64	64	61	61

* = Not Required for Title 21 Reporting

December	AIR1	PDR1	PDR2	PDR3*	ESG1	ESG2	ESG3	ESG4*	ESG5	DEL1*	WCH1*	WCH2	WCH3	WCH4*	WCH5	WCH6	ING1	ING2	ING3	ING4	ING6	ING5*	ING7*	ING8	LN1	LN2	LN3	LN4	ATH1*	ATH2	SLA1	SLA2*	SLA3	SLA4*	SLA5	SLA6*	SLA7	SLA8*	SLA9*
1 Sun	78	67	61	55		68	65	61	66	60	53	61	61	56	74	63	60	65	66		68	56	--	59	73	61	61	64	58	65	64	58	60	59	64	66	63	60	60
2 Mon	78	68	63	58		67	64	60	64	58	56	64	65	60	74	63	60	65	66		69	58	--	59	74	61	62	65	59	65	64	58	60	59	63	65	63	61	60
3 Tue	79	69	62	59		69	64	60	62	54	57	63	62	59	76	64	62	67	68		70	59	--	62	74	64	62	64	60	66	66	61	61	61	63	62	64	60	63
4 Wed	78	67	61	58		67	62	59	61	55	56	63	59	56	75	63	62	66	68		71	58	--	63	73	66	61	64	61	68	65	60	61	60	64	65	65	61	62
5 Thu	80	68	63	59		68	63	60	62	54	58	63	59	58	73	62	60	66	66		69	57	--	60	73	60	60	64	59	66	64	59	61	59	63	62	63	60	60
6 Fri	79	68	63	59		70	65	61	64	55	59	63	61	59	74	63	61	66	67		70	59	--	61	74	63	63	66	60	66	65	59	62	60	64	63	64	61	61
7 Sat	80	67	60	54		68	63	60	61	53	55	62	57	54	73	62	59	65	66		69	57	--	60	72	61	60	64	59	65	64	58	61	58	62	61	63	60	63
8 Sun	78	67	61	57		67	63	60	62	53	52	57	54	52	73	61	60	65	66		69	57	--	60	73	60	60	65	60	66	64	58	61	59	64	61	64	61	60
9 Mon	77	64	61	57		69	63	60	62	54	51	60	58	58	72	60	58	63	64		67	54	--	57	72	59	59	63	57	63	62	56	58	57	61	62	61	57	58
10 Tue	77	62	55	53		65	64	60	64	54	45	53	53	48	71	60	58	62	63		66	53	--	57	71	57	56	62	57	62	60	52	56	53	60	60	60	57	56
11 Wed	78	64	58	54		66	63	61	65	60	49	57	55	51	72	59	59	62	64		67	54	--	57	71	60	59	62	58	63	61	55	58	56	61	62	61	57	57
12 Thu	79	67	61	57		68	64	59	62	56	56	64	63	59	74	63	60	66	67		70	59	--	61	75	62	63	66	60	66	65	59	62	59	65	65	64	60	60
13 Fri	80	68	63	59		69	64	61	63	54	58	64	64	62	74	63	61	66	67		70	58	--	61	75	62	62	66	60	66	65	60	61	60		62	64	61	61
14 Sat	79	66	60	56		68	64	60	64	60	56	64	64	63	72	62	59	62	65		68	56	--	59	73	62	63	64	58	64	61	54	60	55	63	65	62		57
15 Sun	78	65	59	55		67	64	61	65	61	52	58	59	54	71	60	58	62	63		66	53	--	57	72	59	61	63	56	64	61	55	59	55	62	63	61	57	57
16 Mon	78	65	61	57		67	65	62	66	60	52	60	61	57	72	62	58	63	65		67	55	--	57	72	61	60	62	57	63	62	56	59	58	61	64	62	59	59
17 Tue	79	67	62	57		67	64	63	66	60	54	59	62	63	74	62	60	65	66		68	57	--	58	73	61	62	64	58	64	63	57	59	58	62	62	62	58	59
18 Wed	80	68	62	57		69	65	62	65	49	55	63	61	56	75	63	61	66	67		69	58	--	62	75	63	63	65	61	66	65	59	61	59	64	61	65	62	61
19 Thu	79	68	63	58		69	64	59	61	54	56	62	61	57	76	64	61	67	68		71	59	--	62	75	63	63	66	59	67	66	60	62	60	65	62	65	61	63
20 Fri	81	68	63	60		69	65	63	63	58	59	67	65	62	75	64	62	67	68		70	59	--	61	75	63	63	66	62	67	65	60	62	60	65	65	65	62	62
21 Sat	81	69	63	59		69	65	62	65	58	57	64	63	61	74	62	61	65	67		70	60	--	61	75	64	63	66	61	67	65	60	62	59	65	63	65	61	61
22 Sun	80	68	63	58		69	65	62	65	53	57	63	62	61	75	63	61	66	67		69	58	--	60	74	62	62	65	60	66	64	58	62	60	64	62	64	61	61
23 Mon	79	68	63	59		69	66	63	66	62	55	62	62	57	74	63	62	65	66		70	58	--	59	73	61	62	65	59	66	64	57	60	59	64	66	63	60	60
24 Tue	79	66	59	56		68	64	61	64	58	53	60	59	56	72	61	59	63	64		67	56	--	58	73	61	61	64	58	64	62	56	59	57	63	65	63	59	59
25 Wed	77	65	60	55		65	61	56	61	52	54	62	61	57	71	60	56	62	63		65	52	--	56	71	61	57	62	55	62	61	54	58	58	61	63	60	59	57
26 Thu	75	64	58	54		65	62	57	63	58	53	61	61	55	72	61	58	63	64		67	53	--	56	71	60	59	62	54	63	61	53	57	55	60	65	60	58	58
27 Fri	77	64	58	56		66	64	59	65	58	53	62	61	57	73	63	59	63	64		67	56	--	57	72	60	61	63	55	62	61	56	58	55	61	64	61	59	56
28 Sat	79	68	62	58		68	63	59	62	53	59	65	62	59	74	63	62	66	67		68	58	--	60	74	63	61	65	58	65	63	57	60	57	63	63	63	59	59
29 Sun	78	67	61	58		67	63	60	63	56	57	64	65	62	74	63	60	65	66		68	57	--	58	74	61	61	66	56	65	63	56	60	57	63	63	64	57	59
30 Mon	75	67	62	57		66	61	57	62	58	52	61	66	60	74	64	60	64	65		67	57	--	57	74	61	63	64	56	63	62	55	58	57	61	61	62	59	59
31 Tue	78	67	61	57		67	63	59	62	56	56	63	62	58	72	64	60	64	65		68	56	--	58	73	61	60	64	59	64	64	57	59	58	62	62	62	60	58

* = Not Required for Title 21 Reporting



Runway Utilization Report
 Summary of Runway Use (Average)
 Los Angeles International Airport

Period : 10/01/2013 to 12/31/2013

Airline : ALL

Aircraft : ALL

Time Period	Percent Daily Operations Per Runway								Average Operations	Runway Complex		Runway Flow		In Board	Out Board	
	06L	06R	07L	07R	24L	24R	25L	25R		South	North	West	East			
Departures																
Total Hours																
24 Hours	<1%	<1%	<1%	<1%	38%	2%	4%	56%	838	60%	40%	100%	<1 %	94%	6%	
CNEL Hours																
0700 - 1900	<1%	<1%	<1%	<1%	42%	2%	3%	53%	586	56%	44%	100%	<1 %	95%	5%	
1900 - 2200	0%	0%	0%	0%	38%	<1%	5%	56%	98	62%	38%	100%	0%	94%	6%	
2200 - 0700	<1%	<1%	<1%	<1%	24%	1%	7%	67%	153	74%	26%	100%	<1 %	92%	8%	
Contra Hours																
Midnight - 0630	<1%	<1%	<1%	<1%	14%	1%	12%	72%	67	85%	15%	99%	<1 %	87%	13%	
0630 - Midnight	<1%	<1%	<1%	<1%	40%	2%	3%	54%	770	58%	42%	100%	<1 %	95%	5%	
Arrivals																
Total Hours																
24 Hours	<1%	2%	1%	<1%	2%	44%	47%	3%	836	52%	48%	96%	4%	8%	92%	
CNEL Hours																
0700 - 1900	0%	<1%	<1%	<1%	2%	46%	50%	3%	563	52%	48%	100%	<1 %	4%	96%	
1900 - 2200	0%	0%	<1%	<1%	2%	46%	47%	4%	162	51%	49%	100%	<1 %	6%	94%	
2200 - 0700	3%	17%	10%	3%	1%	29%	34%	3%	111	50%	50%	67%	33%	31%	69%	
Contra Hours																
Midnight - 0630	8%	44%	27%	8%	<1%	4%	5%	4%	42	44%	56%	13%	87%	74%	26%	
0630 - Midnight	<1%	<1%	<1%	<1%	2%	46%	49%	3%	794	52%	48%	100%	<1 %	5%	95%	

All values are rounded to the nearest whole number.



Runway Utilization Report
 Summary of Runway Flow (Average)
 Los Angeles International Airport

Period: 10/01/2013 to 12/31/2013

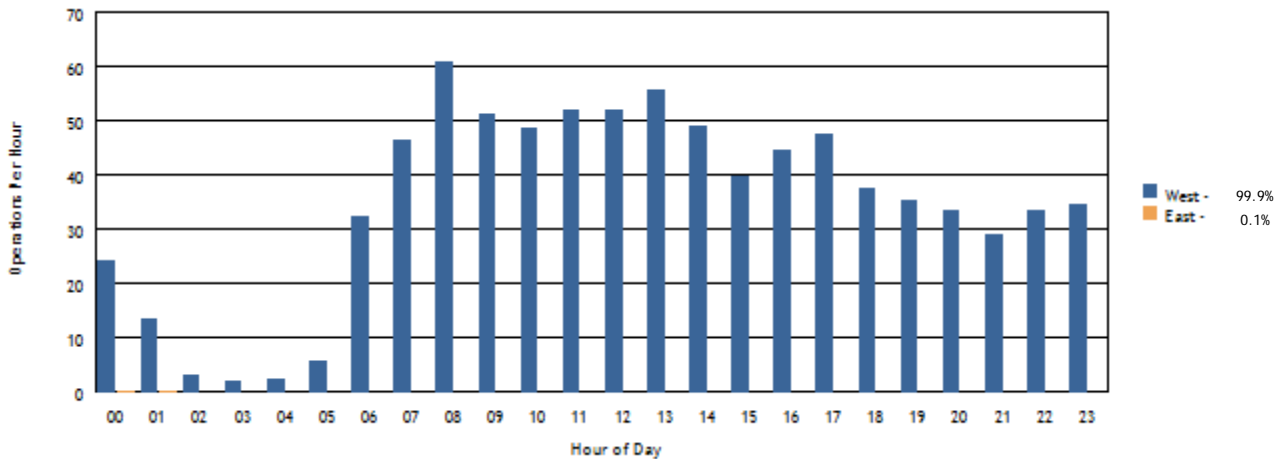
Airline : ALL

Aircraft : ALL

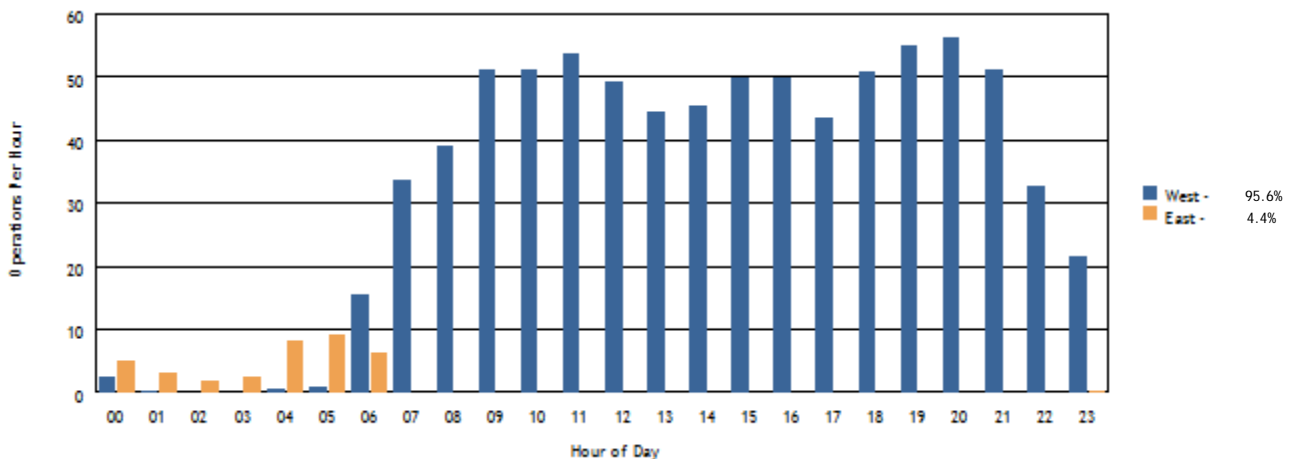
Time Period	Departures			Arrivals			Departures		Arrivals	
	West	East	Average	West	East	Average	West	East	West	East
Total Hours										
24 Hours	837	<1	838	799	37	836	100%	<1%	96%	4%
CNEL Hours										
0700-1900	586	<1	586	563	<1	563	100%	<1%	100%	<1%
1900-2200	98	0	98	162	<1	162	100%	0%	100%	<1%
2200-0700	153	<1	153	74	37	111	100%	<1%	67%	33%
Contra Hours										
Midnight - 0630	67	<1	67	6	36	42	99%	<1%	13%	87%
0630 - Midnight	770	<1	770	794	<1	794	100%	<1%	100%	<1%

All percentages are rounded to the nearest whole number.

Departures Per Hour by Operational Direction



Arrivals Per Hour by Operational Direction



Summary of Actions Taken by LAWA to Comply with the Specific Requirements Imposed by Conditions of the Current Noise Variance for Los Angeles International Airport

Fourth Quarter 2013

The Los Angeles World Airports (LAWA) continuously works to operate an airport that maintains the highest possible environmental quality of life for surrounding communities. To that end, LAWA continues to take the following actions:

- LAWA continues to implement its Aircraft Noise Mitigation Program (ANMP), designed to fund the mitigation of all incompatible land uses within the noise impact boundary as defined in the State Noise Standards. LAWA updates the ANMP report periodically to ensure that it reasonably represents the mitigation and funding programs that are in place.
- With each second quarter Quarterly Report, LAWA submits an annual update of the ANMP. This update includes the number of dwellings acoustically insulated, the cost of the program, the anticipated funding availability, and the anticipated completion date of the project.
- LAWA continues to monitor and enforce, as appropriate, all of its informal noise abatement procedures in place at LAX, including but not limited to the early turn program, preferential runway use procedures and over ocean operations procedures.
- LAWA continues to work with Federal Aviation Administration and pilots to improve compliance with its “no turns before the shoreline” policy.
- LAWA will conduct the design study for the proposed development of two Ground Run-up Enclosures within the five-year time frame.
- LAWA analyzed the implementation of the existing Preferential Runway Use Policy and will submit a report evaluating compliance and implementation of the policy, including recommendations for any possible improvements.

- LAWA continues to submit to the State of California Department of Transportation (CalTrans) and the County of Los Angeles the required Quarterly Reports. These reports depict the noise impact area, and report on the incompatible land uses along with the daily and annual CNEL values at each monitoring station.
- LAWA has not submitted “any proposed new or modified noise monitoring plan or system” to Caltrans during this Variance period and, therefore, has not needed to provide a copy to the County. The existing airport noise and operations monitoring system was certified by Caltrans in February 2010 and the County was provided with all submitted documentation at that time. The County continues to review and audit the data LAWA submits in each Quarterly Report.
- LAWA continues to include tabular data and graphical illustrations with each Quarterly Report describing and comparing the level and type of usage for each runway at LAX during the quarter.
- LAWA continues to monitor and enforce its maintenance run-up curfew (2300-0600). When applicable, LAWA will include with each Quarterly Report, information regarding monitoring and enforcement activities undertaken during the quarter. There were no enforcement actions reported during the fourth quarter 2013.
- LAWA continues to provide a live answered noise complaint hotline as appropriate. Unanswered calls are retrieved, lodged, and responded to in a timely manner.
- LAWA’s aircraft noise and operations monitoring system continues to measure noise levels for all operations at LAX, including the Airbus A380 and the Boeing 747-800. This data is currently available and was presented to the LAX/Community Noise Roundtable and the LAX Area Advisory Committee.