

California State Airport Noise Standards Quarterly Report

Fourth Quarter 2011



LAX

*Los Angeles
World Airports*

Los Angeles World Airports
Los Angeles International Airport

October 19, 2012

TABLE OF CONTENTS

California State Airport Noise Standards Quarterly Report

1. Division of Aeronautics Form 617
2. Incompatible Land Use Data
3. Daily Aircraft CNEL Data
4. Runway Utilization Report
 - Summary of Runway Use
 - Summary of Runway Flow
5. Summary of Actions

Attachment

Noise contour map

**SUMMARY OF STATISTICAL INFORMATION
FOR
CALIFORNIA DEPARTMENT OF TRANSPORTATION**

Los Angeles International Airport
Fourth Quarter 2011

1. Size of Noise Impact Area as defined in the Noise Standards (California Code of Regulations, Title 21, Chapter 2.5, Subchapter 6):

830.5 Acres

2. Estimated number of dwelling units included in the Noise Impact Area as defined in the Noise Standards:

11,931

3. Estimated number of people residing within the Noise Impact Area as defined in the Noise Standards:

41,357

4. Identification of aircraft type having highest takeoff noise level operating at this airport together with estimated number of operations by this aircraft type during the calendar quarter reporting period:

B747: 4,460

5. Total number of aircraft operations during the calendar quarter: (Not Mandatory)

149,922

6. Number of Air Carrier operations during the calendar quarter: (Not Mandatory)

105,315

7. Percentage of Air Carrier operations by aircraft certificated under Federal Aviation Regulation (FAR) Part 36, Stage III. (Not Mandatory)

100 %

8. Estimated number of operations by General Aviation aircraft during the calendar quarter: (Not Mandatory)

2,672

9. Estimated number of operations by Military aircraft during the calendar quarter: (Not Mandatory)

669

LOS ANGELES INTERNATIONAL AIRPORT

Fourth Quarter 2011

Incompatible Land Use

Annual Noise Impact Accumulated by Noise Zone: CNEL 65, 70, and 75+

4Q11	Total Cumulative Noise Impact Areas - All Jurisdictions											
	<i>CNEL 65dB and Above</i>				<i>CNEL 70dB and Above</i>				<i>CNEL 75dB and Above</i>			
	Land Use	Dwelling			Population	Dwelling			Population	Dwelling		
	Acres	Units	Parcels		Acres	Units	Parcels		Acres	Units	Parcels	
Single Family	408.5	2899	2959	10393	87.8	588	596	2590	4	21	22	109
Multi Family	400.5	9006	2788	30892	117.8	2452	709	10124	6	66	22	357
Mobile Home	1	1	3	3	0	0	0	0	0	0	0	0
Schools	1.4	0	1	0	0	0	0	0	0	0	0	0
Churches	18.5	25	44	69	1.3	0	2	0	0	0	0	0
Hospitals	0.6	0	2	0	0	0	0	0	0	0	0	0
Total Incompatible	830.5	11931	5797	41357	206.9	3040	1307	12714	10	87	44	466

4Q11	Total Cumulative Noise Impact Areas - Westchester/Playa Del Rey											
	<i>CNEL 65dB and Above</i>				<i>CNEL 70dB and Above</i>				<i>CNEL 75dB and Above</i>			
	Land Use	Dwelling			Population	Dwelling			Population	Dwelling		
	Acres	Units	Parcels		Acres	Units	Parcels		Acres	Units	Parcels	
Single Family	10.2	72	74	169	0	0	0	0	0	0	0	0
Multi Family	21.7	927	328	2081	1.7	86	9	212	0	0	0	0
Mobile Home	0	0	0	0	0	0	0	0	0	0	0	0
Schools	0	0	0	0	0	0	0	0	0	0	0	0
Churches	1.3	1	1	2	0	0	0	0	0	0	0	0
Hospitals	0	0	0	0	0	0	0	0	0	0	0	0
Total Incompatible	33.2	1000	403	2252	1.7	86	9	212	0	0	0	0

Date Printed: 10/19/2012

Parcels and dwelling units may not match for single family land uses due to subdivision.
Parcels for multifamily land uses reflect only the common area parcel, except for condominiums.

LOS ANGELES INTERNATIONAL AIRPORT

Fourth Quarter 2011

Incompatible Land Use

Annual Noise Impact Accumulated by Noise Zone: CNEL 65, 70, and 75+

4Q11	Total Cumulative Noise Impact Areas - South & South East LA											
	<i>CNEL 65dB and Above</i>				<i>CNEL 70dB and Above</i>				<i>CNEL 75dB and Above</i>			
	Land Use	Dwelling			Dwelling			Dwelling				
	Acres	Units	Parcels	Population	Acres	Units	Parcels	Population	Acres	Units	Parcels	Population
Single Family	41.4	342	347	1216	0	0	0	0	0	0	0	0
Multi Family	23.8	641	157	2287	0	0	0	0	0	0	0	0
Mobile Home	0	0	0	0	0	0	0	0	0	0	0	0
Schools	0	0	0	0	0	0	0	0	0	0	0	0
Churches	3.2	6	10	17	0	0	0	0	0	0	0	0
Hospitals	0	0	0	0	0	0	0	0	0	0	0	0
Total Incompatible	68.4	989	514	3520	0	0	0	0	0	0	0	0

4Q11	Total Cumulative Noise Impact Areas - Lennox											
	<i>CNEL 65dB and Above</i>				<i>CNEL 70dB and Above</i>				<i>CNEL 75dB and Above</i>			
	Land Use	Dwelling			Dwelling			Dwelling				
	Acres	Units	Parcels	Population	Acres	Units	Parcels	Population	Acres	Units	Parcels	Population
Single Family	86.4	607	614	2911	53.8	374	379	1802	4	21	22	109
Multi Family	90.7	1450	519	6745	56.8	842	336	4051	6	66	22	357
Mobile Home	0	0	0	0	0	0	0	0	0	0	0	0
Schools	0	0	0	0	0	0	0	0	0	0	0	0
Churches	1.6	1	3	4	1.3	0	2	0	0	0	0	0
Hospitals	0	0	0	0	0	0	0	0	0	0	0	0
Total Incompatible	178.7	2058	1136	9660	111.9	1216	717	5853	10	87	44	466

Date Printed: 10/19/2012

Parcels and dwelling units may not match for single family land uses due to subdivision.
Parcels for multifamily land uses reflect only the common area parcel, except for condominiums.

LOS ANGELES INTERNATIONAL AIRPORT

Fourth Quarter 2011

Incompatible Land Use

Annual Noise Impact Accumulated by Noise Zone: CNEL 65, 70, and 75+

4Q11	Total Cumulative Noise Impact Areas - Del Aire											
	<i>CNEL 65dB and Above</i>				<i>CNEL 70dB and Above</i>				<i>CNEL 75dB and Above</i>			
	Land Use	Dwelling			Population	Dwelling			Population	Dwelling		
	Acres	Units	Parcels	Acres		Units	Parcels	Acres		Units	Parcels	
Single Family	0	0	0	0	0	0	0	0	0	0	0	0
Multi Family	0	0	0	0	0	0	0	0	0	0	0	0
Mobile Home	0	0	0	0	0	0	0	0	0	0	0	0
Schools	0	0	0	0	0	0	0	0	0	0	0	0
Churches	0	0	0	0	0	0	0	0	0	0	0	0
Hospitals	0	0	0	0	0	0	0	0	0	0	0	0
Total Incompatible	0	0	0	0	0	0	0	0	0	0	0	0

4Q11	Total Cumulative Noise Impact Areas - Athens											
	<i>CNEL 65dB and Above</i>				<i>CNEL 70dB and Above</i>				<i>CNEL 75dB and Above</i>			
	Land Use	Dwelling			Population	Dwelling			Population	Dwelling		
	Acres	Units	Parcels	Acres		Units	Parcels	Acres		Units	Parcels	
Single Family	53.4	398	420	1409	0	0	0	0	0	0	0	0
Multi Family	60.9	1199	395	4162	0	0	0	0	0	0	0	0
Mobile Home	0	0	0	0	0	0	0	0	0	0	0	0
Schools	0	0	0	0	0	0	0	0	0	0	0	0
Churches	1.9	5	8	18	0	0	0	0	0	0	0	0
Hospitals	0	0	0	0	0	0	0	0	0	0	0	0
Total Incompatible	116.2	1602	823	5589	0	0	0	0	0	0	0	0

Date Printed: 10/19/2012

Parcels and dwelling units may not match for single family land uses due to subdivision.
Parcels for multifamily land uses reflect only the common area parcel, except for condominiums.

LOS ANGELES INTERNATIONAL AIRPORT

Fourth Quarter 2011

Incompatible Land Use

Annual Noise Impact Accumulated by Noise Zone: CNEL 65, 70, and 75+

4Q11	Total Cumulative Noise Impact Areas - City of Inglewood											
	<i>CNEL 65dB and Above</i>				<i>CNEL 70dB and Above</i>				<i>CNEL 75dB and Above</i>			
	Land Use	Dwelling				Dwelling				Dwelling		
	Acres	Units	Parcels	Population	Acres	Units	Parcels	Population	Acres	Units	Parcels	Population
Single Family	119.5	829	850	2998	21.2	130	133	574	0	0	0	0
Multi Family	171.6	3874	1030	13640	50.3	1236	253	5226	0	0	0	0
Mobile Home	0.6	0	2	0	0	0	0	0	0	0	0	0
Schools	1.4	0	1	0	0	0	0	0	0	0	0	0
Churches	9.8	12	20	28	0	0	0	0	0	0	0	0
Hospitals	0.6	0	2	0	0	0	0	0	0	0	0	0
Total Incompatible	303.5	4715	1905	16666	71.5	1366	386	5800	0	0	0	0

4Q11	Total Cumulative Noise Impact Areas - City of El Segundo											
	<i>CNEL 65dB and Above</i>				<i>CNEL 70dB and Above</i>				<i>CNEL 75dB and Above</i>			
	Land Use	Dwelling				Dwelling				Dwelling		
	Acres	Units	Parcels	Population	Acres	Units	Parcels	Population	Acres	Units	Parcels	Population
Single Family	97.6	651	654	1690	12.8	84	84	214	0	0	0	0
Multi Family	32	915	359	1977	9.1	288	111	635	0	0	0	0
Mobile Home	0.4	1	1	3	0	0	0	0	0	0	0	0
Schools	0	0	0	0	0	0	0	0	0	0	0	0
Churches	0.7	0	2	0	0	0	0	0	0	0	0	0
Hospitals	0	0	0	0	0	0	0	0	0	0	0	0
Total Incompatible	130.7	1567	1016	3670	21.9	372	195	849	0	0	0	0

Date Printed: 10/19/2012

Parcels and dwelling units may not match for single family land uses due to subdivision.
Parcels for multifamily land uses reflect only the common area parcel, except for condominiums.

October	AIR1	PDR1	PDR2	PDR3*	ESG1	ESG2	ESG3	ESG4*	ESG5	DEL1*	WCH1*	WCH2	WCH3	WCH4*	WCH5	WCH6	ING1	ING2	ING3	ING4	ING6	ING5*	ING7*	ING8	LN1	LN2	LN3	LN4	ATH1*	ATH2	SLA1	SLA2*	SLA3	SLA4*	SLA5	SLA6*	SLA7	SLA8*	SLA9*
1 Sat	80		61	55		68	62	59	57	56	55	62	58	57	74	61	60	65	66	59	69	56	54	59	73	60	62	64	60	64	64	58	58	59	62	59	62	60	59
2 Sun	80		62	56		67	61	57	57	56	51	59	61	56	75	62	61	67	67	59	68	55	55	57	74	61	62	65	60	67	65	58	59	59	63	60	64	59	61
3 Mon	80		63	59		67	62	55	57	54	52	60	61	55	75	62	61	67	68	62	70	58	57	59	75	62	64	66	60	66	66	59	61	60	64	60	64	61	61
4 Tue	80		62	56		68	63	55	59	55	49	59	56	53	74	61	61	66	67	61	69	60	56	58	74	61	62	65	60	66	65	59	60	59	63	60	65	59	62
5 Wed	80	68	63	57		67	62	54	58	56	52	61	60	58	75	63	62	67	69	63	70	59	57	61	76	64	65	67	62	67	65	61	62	59	65	61	66	62	61
6 Thu	82	68	62	56		68	64	55	61		53	60	56	55	75	62	61	67	68	60	70	57	56	59	74	64	63	66	61	67	66	60	61	60	64	63	67	62	61
7 Fri	81	68	62	56		68	63	56	61	57	54	61	61	55	74	62	62	67	68	65	71	60	56	63	75	67	65	67	62	68	65	60	62	60	65	62	68	62	63
8 Sat	81	67	61	54		69	62	58	61	55	49	59	57	50	72	61	59	64	65	60	68	56	54	58	73	61	61	64	59	65	64	58	59	58	62	62		60	59
9 Sun	80	67	61	55		67	64	63	64	58	51	60	61	57	74	61	61	66	67	60	69	55	53	57	74	62	63	65	59	67	64	58	60	58	63	60	63	60	60
10 Mon	80	67	62	59		67	61	54	58	53	50	60	60	57	74	62	60	66	67	59	70		55	57	74	62	63	65	60	66	65	59	60	59	63	62	64	60	61
11 Tue	82	67	61	56		68	64	60	63	54	53	62	60	59	74	61	60	66	66	59	68	57	53	58	74	60	61	64	59	66	64	58	59	59	62	60	63	59	60
12 Wed	82	67	59	56		68	66	61	67		54	64	62	58	74	62	60	65	66	60	67		52	56	72	63	62	63	58	64	64	58	56	58	61	63	63	60	60
13 Thu	81	67	60	56	62	67	64	56	66		56	63	61	57	74	62	61	66	67	60	69	56	56	58	74	64	63	64	59	66	64	59	58	58	62	62	63	60	60
14 Fri	80	67	60	54	64	67	65	59	61	59	53	61	58	54	73	62	63	65	66	64	70	57	52	60	76	63	63	66	60	66	63	57	59	57	63	61	64	61	61
15 Sat	80	68	61	54	65	67	61	54	56	53	49	58	57	56	72	61	61	65	66	65	69	58	54	59	75	62	62	65	60	66	64	59	60	58		59	64		61
16 Sun	80	68	61	54	65	68	61	54	58		53	60	57	54	74	63	61	66	67	63	70	54	54	58	74	60	62	65	59	65	65	61	59	59	63	64	64	61	61
17 Mon	80	67	62	56	64	66	60	53	57		53	62	61	58	75	64	59	65	66	62	69		53	55	75	61	62	64	58	65	65	57	60	58	62	59	64	59	61
18 Tue	79	65		53	62	65	57	49	54		48	60	57	56	74	62	62	65	66	62	71	55	52	55	78	63	65	67	59	66	63	55	61	56	64	59	65	59	60
19 Wed	80	68	60	55	64	67	60	53	55		49	59	55	50	74	63	60	66	67	64	72	59	54	58	78	64	65	68	60	66	64	57	62	57	63	59	65	63	61
20 Thu	80	69	62	56	66	69	62	55	57		53	61	56	54	75	63	61	67	68	62	71	58	56	61	77	64	64	67	61	67	66	62	64	60	64	61	65	61	61
21 Fri	81	68	62	58	65	68	64	55	59	52	49	59	56	54	75	64	62	67	68	63	70	58	57	60	75	63	62	66	60	66	66	60	62	60	64	60	65	62	62
22 Sat	80	66	59	53	63	66	62	55	58	51	50		54	56	72	60	58	64	65	62	69	56	52	59	75	61	61	65	60	67	63	58	62	56	63	61	65	60	60
23 Sun	79	66	58		62	65	58	48	56	55	49		51			63	60	67	67	66	70	54	53	57	77	63	62	67	60	66	65	57	62	58	63	59	64	60	60
24 Mon	80	69	63	58	65	68	62	54	58	50	52	60	56	54	--	63	61	66	67	63	71	57	56	59	77	62	64	67	62	67	65	59	63	59	64	60	65	61	62
25 Tue	80	69	62	56	65	68	63	56	58	50	52	60	57	56	--	63	60	67	68	62	70	54	56	58	75	60	62	65	61	65	65	59	62	60	63	61	65	61	62
26 Wed	80	68	62	57	66	68	63	56	59	53	52	62	63	60	76	63	61	66	67	62	71	56	55	60	76	62	64	66	61	66	66	61	63	60	64	60	65	62	61
27 Thu	80	68	61	55	65	69	65	61	64	59	56	63	63	59	74	63	61	66	67	64	72	60	55	60	77	64	66	67	62	67	65	60	64	58	65	63	66	63	61
28 Fri	79	67	60	57	64	67	63	58	62	60	54	63	63	63	73	63	62	65	66	63	71	57	52	59	77	61	65	66	59	65	64	57	61	60	63	63	65	64	61
29 Sat	80	67	61	54	65	66	62	57	61	55	53	61	62	56	71	60	61	63	64	61	67	54	49	56	73	59	62	64		64	62	57	59	56	61	62		59	58
30 Sun	79	67	61	54	64	66	62	56	63	58	55	63	61	58	74	62	60	66	67	62	69	55	53	57	74	61	63	65	58	64	64	57	61	58	62	62	63	61	59
31 Mon	81	67	61	57	64	67	63	59	66	58	52	67	61	59	75	64	62	66	67	63	69	56	54	56	75	60	62	65	59	65	65	58	64	60	62	60	63	60	61

* = Not Required for Title 21 Reporting

November	AIR1	PDR1	PDR2	PDR3*	ESG1	ESG2	ESG3	ESG4*	ESG5	DEL1*	WCH1*	WCH2	WCH3	WCH4*	WCH5	WCH6	ING1	ING2	ING3	ING4	ING6	ING5*	ING7*	ING8	LNX1	LNX2	LNX3	LNX4	ATH1*	ATH2	SLA1	SLA2*	SLA3	SLA4*	SLA5	SLA6*	SLA7	SLA8*	SLA9*
1 Tue	80	68	61	55	64	67	62	57	60	55	52	60	54	56	73	62	60	65	66	63	71	56	56	59	78	62	63	67	61	66	64	59	63	59	64	60	65	61	61
2 Wed	81	65	57	54	64	67	62	57	63	59	55	62	62	59	69	59	60	62	65	62	67	59		56	73	62	63	64	58	65	62	57	59	56	61	62	62	58	58
3 Thu	79	67	61	55	64	67	65	55	60	54	53	62	60	57	74	63	62	67	67	64	70	60	56	58	76	65	65	67	60	66	65	60	62	60	64	63	64	62	62
4 Fri	80	68	61	56	66	69	66	59	63	60	51	60	59	55	75	64	62	67	68	63	70	58	57	60	75	62	64	67	62	67	66	61	64	61	64	61	66	62	64
5 Sat	80	67	60	52	65	68	64	60	62	57	51	59	58	55	73	62	60	65	66	61	68	56	55	59	74	60	62	65	60	65	64	60	61	60		65	64	61	62
6 Sun	80	68	61	56	66	68	64	57	61	59	56	64	62	59	74	64	62	66	67	64	70	59	57	61	74	66	65	66	62	66	65	61	63	60	65	64	65	61	63
7 Mon	80	68	63	58	65	68	66	57	62	56	49	60	58	55	73	63	60	65	66	63	70	57	55	57	74	61	62	66	61	66	64	59	62	60	64	63	64	61	61
8 Tue	81	67	61	56	65	69	65	62	66	60	52	61	56	57	73	61	60	65	66	62	69	58	53	59	75	64	63	66	61	66	64	58	62	59	64	63	64	62	61
9 Wed	81	67	61	56	64	67	64	60	65		54	62	57	53	72	61	59	64	65	62	67	53	52	57	72	60	61	64	60	64	63	58	60	57	62	65	63	59	58
10 Thu	81	66	61	56	64	67	64	58	63	57	51	60	51	73	61	60	65	66	63	68	57	54	57	72	65	61	65	59	64	64	58	61	59	61	64	62	61	60	
11 Fri	78	66	58	54	61	63	61	51	56	60	54	62	62	58	71	67	67	66	65	70	69	62	61	67	73	73	67	68	61	64	62	65	62	59	61	65	63	61	60
12 Sat	73	64	58	56	62	64	61	53	61	64	54	62	60	57	69	66	70	65	66	73	73	67	61	71	78	76	72	73	67	69	65	69	68	61	67	68	67	65	62
13 Sun	78	67	60	53	64	67	64	61	65	63	50	57	57	52	74	63	66	66	67	69	72	63	56	66	77	62	69	70	65	68	66	65	66	60	66	64	66	64	61
14 Mon	81	68	63	57	66	68	64	58	60	56	54	63	61	63	74	63	61	66	67	63	69	60	56	57	74	64	63	66	60	65	65	62	61	60	63	63	64	61	63
15 Tue	82	68	62	56	66	69	62	55	59	56	52	62	59	59	74	63	62	66	67	64	70	63	57	57	76	67	67	69	60	65	65	59	62	60	63	61	64	61	61
16 Wed	81	68	61	56	66	70	63	58	59	51	53	63	61	59	74	63	61	66	67	62	70	56	54	58	75	62	63	66	60	65	65	58	62	59	63	61	64	61	62
17 Thu	80	69	62	57	66	69	63	58	62	55	55	65	68	63	75	63	61	67	68	64	71	56	56	62	75	65	64	66	61	67	65	60	63	60	64	64	65	62	62
18 Fri	81	69	63	57	66	68	64	56	60	51	53	62	59	55	74	63	61	67	68	64	72	59	56	61	78	63	65	69	63	68	66	60	66	61	66	62	67	65	62
19 Sat	80	68	62	56	66	68	62	55	57		54	62	59	55	74	63	61	66	67	62	69	56	57	58	74	59	63	65	60	66	65	59	61	60	63	65	64	63	63
20 Sun	80	69	62	58	65	68	63	56	59	57	57	64	61	59	74	65	64	67	68	67	70	60	59	64	75	68	65	67	62	66	65	63	63	61	64	64	65	61	62
21 Mon	80	69	64	58	66	69	64	59	63	59	53	61	58	56	73	63	61	66	67	62	69	58	55	59	74	63	64	65	61	66	65	59	62	60	64	62	70	63	61
22 Tue	80	68	62	56	66	69	64	59	62	58	52	62	63	62	74	63	61	66	67	62	70	57	56	58	76	62	65	66	61	66	65	60	63	60	64	64	65	63	62
23 Wed	80	69	63	58	66	69	65	59	61	57	55	62	62	59	74	63	61	66	68	63	70	56	57	59	75	62	64	66	61	66	66	61	63	60	64	64	65	61	62
24 Thu	80	67	61	56	65	67	62	54	58	52	51	59	57	55	72	61	60	64	65	61	67	55	53	56	74	59	60	64	59	64	63	57	60	58	62	61	64	59	62
25 Fri	79	68	62	57	64	67	63	57	62	57	56	62	61	59	73	61	59	65	66	61	69	55	55	57	73	61	61	64	60	65	64	58	61	59	62	63	64	62	60
26 Sat	79	66	59	55	64	67	65	60	66		54	62	62	55	72	61	59	64	65	63	67	54	51	55	73	60	64	64	60	66	63	57		57	65		65	62	60
27 Sun	79	66	59	50	62	65	63	57	64		47	57	53	48	72	61	58	64	65	61	67	51	50	58	72	60	60	63	57	64	63	56	60	57	62		63	60	60
28 Mon	79	66	62	56	64	67	64	60	64	60	55	64	63	60	73	63	60	65	65	62	68	54	50	54	73	61	64	64	59	64	63	57	62	58	62		63	60	59
29 Tue	80	68	61	57	65	67	65	61	65	60	59	65	64	63	72	61	60	64	65	62	69	61	53	56	75	59	65	67	60	65	62	56	61	57	63	63	64	60	59
30 Wed	81	70	64	58	66	68	64	63	63	60	59	63	61	62	75	64	62	66	67	64	70	59	56	60	76	60	63	66	61	66	65	61	63	60	64	62	65	62	61

* = Not Required for Title 21 Reporting

December	AIR1	PDR1	PDR2	PDR3*	ESG1	ESG2	ESG3	ESG4*	ESG5	DEL1*	WCH1*	WCH2	WCH3	WCH4*	WCH5	WCH6	ING1	ING2	ING3	ING4	ING6	ING5*	ING7*	ING8	LN1	LN2	LN3	LN4	ATH1*	ATH2	SLA1	SLA2*	SLA3	SLA4*	SLA5	SLA6*	SLA7	SLA8*	SLA9*
1 Thu	76	63	59	51	64	67	65	62	65	63	55	63	59	57	71	65	67	65	66	71	72	67	57	68	76	65	71	71	66	68	64	67	68	60	66	66	67	65	60
2 Fri	79	68	62	58	64	67	64	55	60	59	56	64	66	64	74	64	65	67	67	67	71	64	55	63	76	66	68	69	62	67	65	62	64	61	64	66	66	63	63
3 Sat	80	67	60	57	65	68	63	58	62	52	54	61	59	56	71	60	60	63	64	59	65	58	52	53	71	59	61	62	56	61	62	57	57	56	60	60	63	58	59
4 Sun	79	66	60	55	63	66	61	53	60	57	57	64	58	57	72	61	59	64	66	61	67	53	53	55	72	59	60	64	58	64	63	57	60	58	63	63	63	61	59
5 Mon	79	66	61	58	63	66	62	55	63	57	56	63	64	61	72	61	59	63	64	61	67	54	52	55	71	63	62	64	58	63	62	56	59	57	61	61	61	59	58
6 Tue	79	66	59	54	63	66	63	57	63	60	54	62	60	60	71	60	59	63	64	61	67	53	52	54	72	58	60	64	57	63	62	55	59	56	62	62	61	59	57
7 Wed	79	65	58	55	64	67	63	59	64	61	51	61	60	53	72	61	59	64	65	61	68	53	52	55	72	59	63	63	58	63	63	57	59	58	61	64	62	59	59
8 Thu	80	67	60	55	64	68	64	58	64	60	54	64	62	61	73	63	62	65	66	63	69	57	55	56	74	61	65	65	60	65	64	59	61	58	63	66	64	60	59
9 Fri	80	68	61	55	64	67	65	61	66	61	54	63	60	61	73	62	62	65	65	64	69	57	52	59	74	60	64	66	60	65	63	59	61	58	62	66	64	60	60
10 Sat	79	66	59	54	65	68	63	58	62	58	51	60	60	56	72	61	59	64	65	61	68	55	53	56	74	59	64	65	58	65	62	58	60	57	62	64	63	60	59
11 Sun	80	68	62	56	65	68	63	57	58		58	63	59	58	73	62	60	66	67	62	71	60	56	58	74	59	62	65	60	66	65	59	62	60	63	63	64	60	61
12 Mon	79	70	61	58	63	65	60	54	59	64	55	63	62	61	71	68	69	68	68	72	72	66	63	69	75	70	70	71	66	67	64	67	67	61	65	67	65	63	61
13 Tue	80	68	62	57	65	68	65	62	64	61	54	60	57	56	73	65	66	66	67	69	71	63	58	66	76	60	67	69	64	68	65	65	66	60	66	70	67	63	62
14 Wed	82	68	62	58	66	69	65	59	64	59	56	62	61	61	73	63	61	66	67	61	69	55	55	57	74	61	62	65	61	65	64	59	62	59	63	63	64	62	61
15 Thu	81	69	63	58	66	69	66	61	66	61	59	66	60	58	74	63	61	66	67	64	70	56	56	59	75	62	63	66	62	66	65	60	63	60	65	66	65	63	62
16 Fri	80	68	62	57	65	68	65	59	63		58	67		62	73	62	63	65	67	63	69	59	53	59	75	64		66	61	66	64	58	62	59	64	66			60
17 Sat	80	68	62	56	65	68	65	56	62	57	56	63	63	59	73	62	59	65	66	61	68	53	54	57	73	59	63	64	59	64	64	58	61	59	62	64	64	60	60
18 Sun	81	68	62	56	66	69	65	59	63	54	57	65	61	57	74	63	60	66	67	61	69	54	56	58	74	61	62	65	61	66	65	59	62	60	64	63	65	60	62
19 Mon	81	69	64	60	66	69	63	55	61	56	58	66	60	58	74	63	61	66	67	61	69	54	56	57	74	60	62	65	61	65	65	59	62	61	64	65	65		62
20 Tue	81	68	62	58	66	69	65	60	65	60	58	65	60	59	74	64	63	66	67	65	70	55	56	59	75	62	64	66	60	66	65	59	62	60	64	66	65	61	62
21 Wed	81	68	62	58	66	69	65	59	64	57	56	66	61	58	75	63	61	67	67	64	70	54	56	58	74	63	63	65	60	66	66	61	62	61	64	65	65	61	62
22 Thu	80	71	63	57	64	68	64	58	62	59	58	64	59	57	73	64	64	65	66	68	69	62	57	63	74	71	68	68	62	65	64	61	64	57	63	63	63	61	57
23 Fri	77	66	57	53	63	66	64	60	65		54	64	59	59	72	62	63	64	65	66	70	63		62	75	70	68	68	61	65	62	59	62	56	64	65	64	62	58
24 Sat	77	63	55	49	60	64	62	57	64	58	53	62	60	55	70	59	57	60	61	61	66	51		57	71	56	61	61	58	60	59	53		54	60	64	60	59	55
25 Sun	78	65	58	52	61	65	64	58	66	60	53	61	59	55	71	60	59	62	63	59	65	49		50	71	57	60	62	55	62	62	54	59	56	59	63	62	58	57
26 Mon	79	68	61	55	63	67	63	56	63	58	55	63	63	59	74	63	61	65	66	62	68	55	51	56	74	62	64	65	58	64	64	58	61	58	61	63	63	60	60
27 Tue	79	68	62	57	64	68	64	57	63	60	55	62	64	61	74	63	60	65	66	62	69	54	55	56	74	62	64	65	60	65	66	57	61	58	63		64	61	60
28 Wed	79	68	60	56	65	68	66	62	65		56	64	64	63	74	63	61	65	66	62	69	56	54	55	74	62	65	66	59	64	63	58	61	58	64		64	63	61
29 Thu	81	68	62	57	65	68	65	61	65	61	59	66	65	63	75	64	62	67	67	63	70	56	55	58	75	64	65	66	60	65	65	59	62	59	64	64	64	61	61
30 Fri	79	69	62	58	64	68	65	62	66	60	61	65	65	61	75	64	63	67	68	64	72	59	56	60	77	63	66	68	63	67	66	61	64	60	66	64	67	62	62
31 Sat	80	68	62	59	66	69	67	66	69	62	61	67	65	65	73	64	64	65	66	67	70	57	53	59	76		65	67	64	67	64	59	63	61	66	65	66	64	62

* = Not Required for Title 21 Reporting



Runway Utilization Report
 Summary of Runway Use (Average)
 Los Angeles International Airport

Period : 10/01/2011 to 12/31/2011

Airline : ALL

Aircraft : ALL

Time Period	Percent Daily Operations Per Runway								Average Operations	Runway Complex		Runway Flow		In Board	Out Board	
	06L	06R	07L	07R	24L	24R	25L	25R		South	North	West	East			
Departures																
Total Hours																
24 Hours	<1%	2%	3%	<1%	37%	1%	4%	53%	808	60%	40%	95%	5%	95%	5%	
CNEL Hours																
0700 - 1900	<1%	2%	3%	<1%	40%	<1%	3%	51%	561	57%	43%	94%	6%	96%	4%	
1900 - 2200	<1%	2%	4%	<1%	39%	<1%	5%	50%	96	59%	41%	94%	6%	95%	5%	
2200 - 0700	<1%	<1%	4%	<1%	25%	2%	4%	64%	151	72%	28%	95%	5%	93%	7%	
Contra Hours																
Midnight - 0630	<1%	<1%	4%	<1%	19%	4%	6%	66%	67	76%	24%	95%	5%	90%	10%	
0630 - Midnight	<1%	2%	3%	<1%	38%	<1%	3%	52%	741	59%	41%	94%	6%	96%	4%	
Arrivals																
Total Hours																
24 Hours	3%	1%	2%	3%	2%	41%	47%	2%	795	54%	46%	91%	9%	7%	93%	
CNEL Hours																
0700 - 1900	2%	<1%	<1%	3%	2%	43%	48%	2%	528	53%	47%	94%	6%	4%	96%	
1900 - 2200	3%	<1%	<1%	3%	2%	43%	46%	3%	152	53%	47%	94%	6%	5%	95%	
2200 - 0700	4%	7%	13%	5%	2%	27%	39%	2%	115	60%	40%	70%	30%	25%	75%	
Contra Hours																
Midnight - 0630	8%	19%	34%	9%	1%	5%	21%	3%	44	67%	33%	30%	70%	57%	43%	
0630 - Midnight	2%	<1%	<1%	3%	2%	43%	48%	2%	751	53%	47%	94%	6%	4%	96%	

All values are rounded to the nearest whole number.



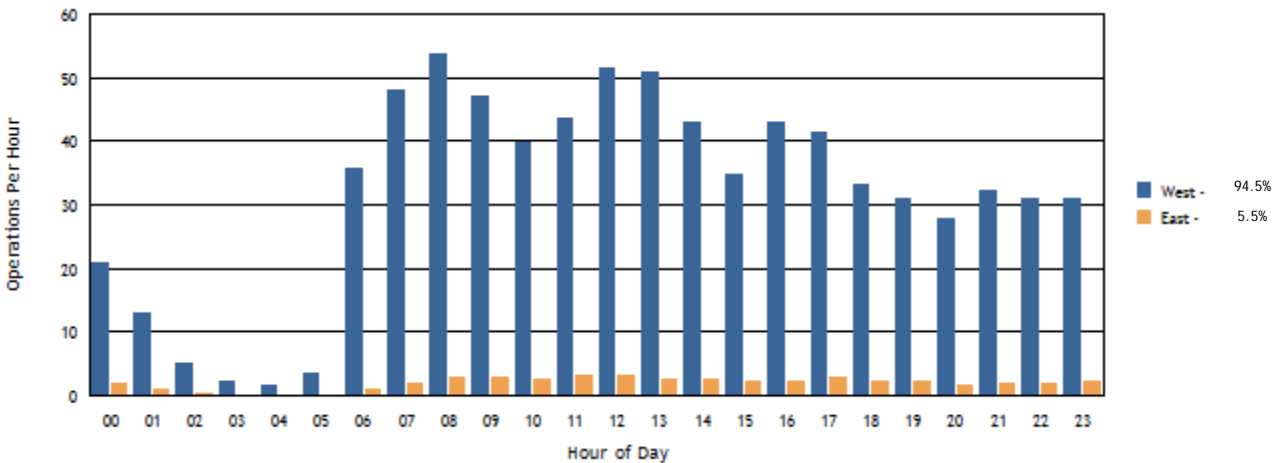
Runway Utilization Report
 Summary of Runway Flow (Average)
 Los Angeles International Airport

Period: 10/01/2011 to 12/31/2011
 Airline : ALL
 Aircraft : ALL

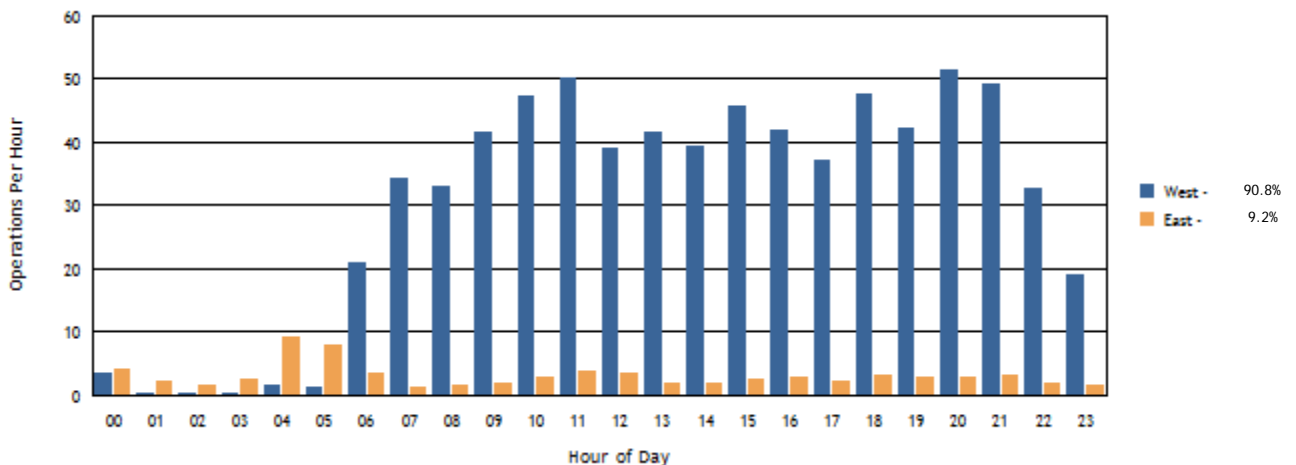
Time Period	Departures			Arrivals			Departures		Arrivals	
	West	East	Average	West	East	Average	West	East	West	East
Total Hours										
24 Hours	764	44	808	722	73	795	95%	5%	91%	9%
CNEL Hours										
0700-1900	530	31	561	499	29	528	94%	6%	94%	6%
1900-2200	91	5	96	143	9	152	94%	6%	94%	6%
2200-0700	143	8	151	80	34	115	95%	5%	70%	30%
Contra Hours										
Midnight - 0630	64	3	67	13	31	44	95%	5%	30%	70%
0630 - Midnight	700	41	741	709	42	751	94%	6%	94%	6%

All percentages are rounded to the nearest whole number.

Departures Per Hour by Operational Direction



Arrivals Per Hour by Operational Direction



Summary of Actions Taken by LAWA to Comply with the Specific Requirements Imposed by Conditions of the Current Noise Variance for Los Angeles International Airport

Fourth Quarter 2011

The Los Angeles World Airports (LAWA) continuously works to operate an airport that maintains the highest possible environmental quality of life for surrounding communities. To that end, LAWA continues to take the following actions:

- LAWA continues to implement its Aircraft Noise Mitigation Program (ANMP), designed to fund the mitigation of all incompatible land uses within the noise impact boundary as defined in the State Noise Standards. LAWA updates the ANMP report periodically to ensure that it reasonably represents the mitigation and funding programs that are in place.
- With each second quarter Quarterly Report, LAWA submits an annual update of the ANMP. This update includes the number of dwellings acoustically insulated, the cost of the program, the anticipated funding availability, and the anticipated completion date of the project.
- LAWA continues to monitor and enforce, as appropriate, all of its informal noise abatement procedures in place at LAX, including but not limited to the early turn program, preferential runway use procedures and over ocean operations procedures.
- LAWA continues to monitor and enforce its maintenance run-up curfew (2300-0600). When applicable, LAWA will include with each Quarterly Report, information regarding monitoring and enforcement activities undertaken during the quarter. There were no enforcement actions reported during the fourth quarter 2011.
- LAWA will continue to evaluate its existing informal noise abatement procedures, and to modify those procedures when necessary.
- LAWA continues its community response efforts by cataloging and responding to aircraft noise related citizen complaints.

- LAWA continues to submit to the State of California Department of Transportation (CalTrans) and the County of Los Angeles the required Quarterly Reports. These reports depict the noise impact area, and report on the incompatible land uses along with the daily and annual CNEL values at each monitoring station.
- With each Quarterly Report, beginning the second quarter 2005, LAWA continues to include tabular data and graphical illustrations describing and comparing the level and type of usage for each runway at LAX during the quarter.