

California State Airport Noise Standards Quarterly Report

Fourth Quarter 2010



LAX

*Los Angeles
World Airports*

Los Angeles World Airports
Los Angeles International Airport

December 15, 2011

TABLE OF CONTENTS

California State Airport Noise Standards Quarterly Report

1. Division of Aeronautics Form 617
2. Incompatible Land Use Data
3. Daily Aircraft CNEL Data
4. Runway Utilization Report
 - Summary of Runway Use
 - Summary of Runway Flow
5. Summary of Actions

Attachment

Noise contour map

**SUMMARY OF STATISTICAL INFORMATION
FOR
CALIFORNIA DEPARTMENT OF TRANSPORTATION**

Los Angeles International Airport
Fourth Quarter 2010

1. Size of Noise Impact Area as defined in the Noise Standards (California Code of Regulations, Title 21, Chapter 2.5, Subchapter 6):

920.1 Acres

2. Estimated number of dwelling units included in the Noise Impact Area as defined in the Noise Standards:

13,341

3. Estimated number of people residing within the Noise Impact Area as defined in the Noise Standards:

44,286

4. Identification of aircraft type having highest takeoff noise level operating at this airport together with estimated number of operations by this aircraft type during the calendar quarter reporting period:

B747: 5,733

5. Total number of aircraft operations during the calendar quarter: (Not Mandatory)

142,303

6. Number of Air Carrier operations during the calendar quarter: (Not Mandatory)

99,860

7. Percentage of Air Carrier operations by aircraft certificated under Federal Aviation Regulation (FAR) Part 36, Stage III. (Not Mandatory)

100 %

8. Estimated number of operations by General Aviation aircraft during the calendar quarter: (Not Mandatory)

2,655

9. Estimated number of operations by Military aircraft during the calendar quarter: (Not Mandatory)

653

LOS ANGELES INTERNATIONAL AIRPORT

Fourth Quarter 2010

Incompatible Land Use

Annual Noise Impact Accumulated by Noise Zone: CNEL 65, 70, and 75+

4Q10	Total Cumulative Noise Impact Areas - All Jurisdictions											
	<i>CNEL 65dB and Above</i>				<i>CNEL 70dB and Above</i>				<i>CNEL 75dB and Above</i>			
	Land Use	Dwelling			Population	Dwelling			Population	Dwelling		
	Acres	Units	Parcels		Acres	Units	Parcels		Acres	Units	Parcels	
Single Family	485.8	3516	3484	11828	98.7	686	672	2905	4.8	27	27	122
Multi Family	433.9	9824	2289	32455	128.3	2793	639	10848	9	181	26	585
Mobile Home	0.4	1	1	3	0	0	0	0	0	0	0	0
Schools	0	0	0	0	0	0	0	0	0	0	0	0
Churches	0	0	0	0	0	0	0	0	0	0	0	0
Hospitals	0	0	0	0	0	0	0	0	0	0	0	0
Total Incompatible	920.1	13341	5774	44286	227	3479	1311	13753	13.8	208	53	706

4Q10	Total Cumulative Noise Impact Areas - Westchester/Playa Del Rey											
	<i>CNEL 65dB and Above</i>				<i>CNEL 70dB and Above</i>				<i>CNEL 75dB and Above</i>			
	Land Use	Dwelling			Population	Dwelling			Population	Dwelling		
	Acres	Units	Parcels		Acres	Units	Parcels		Acres	Units	Parcels	
Single Family	10.3	78	78	169	0	0	0	0	0	0	0	0
Multi Family	29.3	1222	77	2547	1.6	86	9	198	0	0	0	0
Mobile Home	0	0	0	0	0	0	0	0	0	0	0	0
Schools	0	0	0	0	0	0	0	0	0	0	0	0
Churches	0	0	0	0	0	0	0	0	0	0	0	0
Hospitals	0	0	0	0	0	0	0	0	0	0	0	0
Total Incompatible	39.6	1300	155	2716	1.6	86	9	198	0	0	0	0

Date Printed: 12/15/2011

Parcels and dwelling units may not match for single family land uses due to subdivision.
Parcels for multifamily land uses reflect only the common area parcel.

LOS ANGELES INTERNATIONAL AIRPORT

Fourth Quarter 2010

Incompatible Land Use

Annual Noise Impact Accumulated by Noise Zone: CNEL 65, 70, and 75+

4Q10	Total Cumulative Noise Impact Areas - South & South East LA															
	<i>CNEL 65dB and Above</i>				<i>CNEL 70dB and Above</i>				<i>CNEL 75dB and Above</i>							
	Land Use	Dwelling			Acres	Units	Parcels	Population	Acres	Units	Parcels	Population	Acres	Units	Parcels	Population
Single Family	47.7	397	397	1390	0	0	0	0	0	0	0	0	0	0	0	0
Multi Family	20.9	601	133	2105	0	0	0	0	0	0	0	0	0	0	0	0
Mobile Home	0	0	0	0	0	0	0	0	0	0	0	0	0	0	0	0
Schools	0	0	0	0	0	0	0	0	0	0	0	0	0	0	0	0
Churches	0	0	0	0	0	0	0	0	0	0	0	0	0	0	0	0
Hospitals	0	0	0	0	0	0	0	0	0	0	0	0	0	0	0	0
Total Incompatible	68.6	998	530	3495	0	0	0	0	0	0	0	0	0	0	0	0

4Q10	Total Cumulative Noise Impact Areas - Lennox															
	<i>CNEL 65dB and Above</i>				<i>CNEL 70dB and Above</i>				<i>CNEL 75dB and Above</i>							
	Land Use	Dwelling			Acres	Units	Parcels	Population	Acres	Units	Parcels	Population	Acres	Units	Parcels	Population
Single Family	105.2	725	725	3268	63.6	437	437	1986	4.8	27	27	122	0	0	0	0
Multi Family	107.7	1852	575	8328	62.3	1015	344	4609	7	81	25	365	0	0	0	0
Mobile Home	0	0	0	0	0	0	0	0	0	0	0	0	0	0	0	0
Schools	0	0	0	0	0	0	0	0	0	0	0	0	0	0	0	0
Churches	0	0	0	0	0	0	0	0	0	0	0	0	0	0	0	0
Hospitals	0	0	0	0	0	0	0	0	0	0	0	0	0	0	0	0
Total Incompatible	212.9	2577	1300	11596	125.9	1452	781	6595	11.8	108	52	486	0	0	0	0

Date Printed: 12/15/2011

Parcels and dwelling units may not match for single family land uses due to subdivision.
Parcels for multifamily land uses reflect only the common area parcel.

LOS ANGELES INTERNATIONAL AIRPORT

Fourth Quarter 2010

Incompatible Land Use

Annual Noise Impact Accumulated by Noise Zone: CNEL 65, 70, and 75+

4Q10	Total Cumulative Noise Impact Areas - Del Aire											
	<i>CNEL 65dB and Above</i>				<i>CNEL 70dB and Above</i>				<i>CNEL 75dB and Above</i>			
	Land Use	Dwelling			Population	Dwelling			Population	Dwelling		
	Acres	Units	Parcels	Acres		Units	Parcels	Acres		Units	Parcels	
Single Family	0	0	0	0	0	0	0	0	0	0	0	0
Multi Family	0	0	0	0	0	0	0	0	0	0	0	0
Mobile Home	0	0	0	0	0	0	0	0	0	0	0	0
Schools	0	0	0	0	0	0	0	0	0	0	0	0
Churches	0	0	0	0	0	0	0	0	0	0	0	0
Hospitals	0	0	0	0	0	0	0	0	0	0	0	0
Total Incompatible	0	0	0	0	0	0	0	0	0	0	0	0

4Q10	Total Cumulative Noise Impact Areas - Athens											
	<i>CNEL 65dB and Above</i>				<i>CNEL 70dB and Above</i>				<i>CNEL 75dB and Above</i>			
	Land Use	Dwelling			Population	Dwelling			Population	Dwelling		
	Acres	Units	Parcels	Acres		Units	Parcels	Acres		Units	Parcels	
Single Family	63.6	492	492	1660	0	0	0	0	0	0	0	0
Multi Family	62.7	1321	401	4370	0	0	0	0	0	0	0	0
Mobile Home	0	0	0	0	0	0	0	0	0	0	0	0
Schools	0	0	0	0	0	0	0	0	0	0	0	0
Churches	0	0	0	0	0	0	0	0	0	0	0	0
Hospitals	0	0	0	0	0	0	0	0	0	0	0	0
Total Incompatible	126.3	1813	893	6030	0	0	0	0	0	0	0	0

Date Printed: 12/15/2011

Parcels and dwelling units may not match for single family land uses due to subdivision.
Parcels for multifamily land uses reflect only the common area parcel.

LOS ANGELES INTERNATIONAL AIRPORT

Fourth Quarter 2010

Incompatible Land Use

Annual Noise Impact Accumulated by Noise Zone: CNEL 65, 70, and 75+

4Q10	Total Cumulative Noise Impact Areas - City of Inglewood											
	<i>CNEL 65dB and Above</i>				<i>CNEL 70dB and Above</i>				<i>CNEL 75dB and Above</i>			
	Land Use	Dwelling			Dwelling			Dwelling				
	Acres	Units	Parcels	Population	Acres	Units	Parcels	Population	Acres	Units	Parcels	Population
Single Family	150.8	1092	1060	3730	21.6	164	150	732	0	0	0	0
Multi Family	174.1	3732	911	12694	49	1233	231	5031	0	0	0	0
Mobile Home	0.4	1	1	3	0	0	0	0	0	0	0	0
Schools	0	0	0	0	0	0	0	0	0	0	0	0
Churches	0	0	0	0	0	0	0	0	0	0	0	0
Hospitals	0	0	0	0	0	0	0	0	0	0	0	0
Total Incompatible	325.2	4825	1972	16427	70.7	1397	381	5763	0	0	0	0

4Q10	Total Cumulative Noise Impact Areas - City of El Segundo											
	<i>CNEL 65dB and Above</i>				<i>CNEL 70dB and Above</i>				<i>CNEL 75dB and Above</i>			
	Land Use	Dwelling			Dwelling			Dwelling				
	Acres	Units	Parcels	Population	Acres	Units	Parcels	Population	Acres	Units	Parcels	Population
Single Family	108.2	732	732	1610	13.5	85	85	187	0	0	0	0
Multi Family	39.2	1096	192	2411	15.2	459	55	1010	2	100	1	220
Mobile Home	0	0	0	0	0	0	0	0	0	0	0	0
Schools	0	0	0	0	0	0	0	0	0	0	0	0
Churches	0	0	0	0	0	0	0	0	0	0	0	0
Hospitals	0	0	0	0	0	0	0	0	0	0	0	0
Total Incompatible	147.4	1828	924	4022	28.7	544	140	1197	2	100	1	220

Date Printed: 12/15/2011

Parcels and dwelling units may not match for single family land uses due to subdivision.
Parcels for multifamily land uses reflect only the common area parcel.



October	AIR1	PDR1	PDR2	PDR3*	ESG1	ESG2	ESG3	ESG4*	ESG5	DEL1*	WCH1*	WCH2	WCH3	WCH4*	WCH5	WCH6	ING1	ING2	ING3	ING4	ING6	ING5*	ING7*	ING8	LNK1	LNK2	LNK3	LNK4	ATH1*	ATH2	SLA1	SLA2*	SLA3	SLA4*	SLA5	SLA6*	SLA7	SLA8*	SLA9*
1 Fri	81	68	61	56	66	68	64	61	62	--	54	60	60	57	75	62	61	67	67	61	70	58	--	59	75	62	63	65	60		64	62	62	58	65	60	65	61	60
2 Sat	81	67	61	55	66	68	61	52	57	--	49	58	53	51	73	61	59	66	66	60	68	57	--	57	74	60	61	64	59		64	59	61	58		57	63	59	60
3 Sun	80	67	60	53	65	67	60	51	56	--	47	56	54	48	74	62	61	67	67	60	71	58	--	59	76	62	63	67	61		63	57	62	58	64	57	64	58	59
4 Mon	80	68	63	59	65	67	61	53	58	--	51	60	60	55	75	63	61	67	67	61	71	57	--	59	76	62	65	67	61		67	59	63	59	64	60	65	60	62
5 Tue	80	69	62	58	66	68	62	55	59	--	53	62	58	53	74	61	62	66	67	64	71	65	--	61	76	70	66	69	62		64	59	64	59	64		64	60	61
6 Wed	82	68	62	58	66	68	62	54	58	--	54	61	57	55	74	61	62	66	67	63	70	66	--	58	75	68	65	69	61		64	59	63		63	62	64	60	61
7 Thu	81	68	62	55	65	68	63	54	60	--	50	58	54	53	75	62	61	67	67	60	70	58	--	59	75	62	62	65	61		65	61	62	61	63	60	64	61	61
8 Fri	81	68	61	54	65	68	63	57	61	--	51	62	61	58	74	63	61	67	67	61	71	59	--	60	75	61	64	66	62		64	59	63	59	64	61	65	60	61
9 Sat	81	66	60	56	65	68	62	60	60	--	53	63		58	72	60	60	65	65	60	69	61	--	60	73	63	63	69	59		63	58	60	57	62	61	63	60	60
10 Sun	81	67	60	57	66	67	61	59	59	--	55	63	62	61	73	61	61	66	66	63	69	57	--	60	74	66	63	66	60		63	58	61	58	63	59	63	60	60
11 Mon	81	67	62	57	65	67	59	51	57	--	53	61	59	56	74	61	60	66	66	63	70	60	--	62	74	65	63	66	59		63	59	61	58	63	60	62	59	60
12 Tue	81	67	59	55	65	67	61	55	56	--	50	59	51	54	74	62	60	66	67	62	70	58	--	58	75	62	62	66	60		63	59	62	60	63	59	64	60	60
13 Wed	80	65	55	50	62	65	59	49	55	--	47	57	56	52	75	62	59	66	66	60	71	56	--	57	77	64	64	68	60		64	60	62	60	64	57	64	60	60
14 Thu	81	67	58	52	63	67	61	52	57	--	48	57	55	48	79	66	63	70	70	61	70	58	--	59	75	62	62	66	59		66	60	61	60	62	60	62	60	62
15 Fri	82	67	60	53	65	68	63	54	58	--	47	56	59	49	76	63	61	68	69	60	72	57	--	60	75	63	63	66	60		65	60	62	58	63	58	64	59	60
16 Sat	80	67	60	52	64	68	61	53	58	--	48	55	58	47	74	61	60	65	66	60	71	60	--	60	76	62	63	67	61		64	58	63	57	66	58	65	59	58
17 Sun	81	68	61	53	65	68	61	51	58	--	52	57	56	52	75	63	60	67	67	60	73	56	--	59	76		63	67	59		64	58	63	59	65	59	65	60	61
18 Mon	80	69	64	56	65	67	61	50	60	--	49	61	55	52	76	63	61	67	68	59	70	57	--	57	73	62	62	65		64	59	61	59	63	59	63	59	61	
19 Tue	81	68	62	57	66	68	62	57	60	--	50	60	57	53	76	62	61	67	68	61	71	58	--	59	75	63	64	66	59		64	60	63	60	63	61	64	60	61
20 Wed	82	68	62		66	68	62	54	57	--	51	60	59	55	77	63	61	67	68	61	70	56	--	59	75		63	66		65	60	62	59	63	59	63	58	60	
21 Thu	81	68	62	55	66	69	63	55	60	--	50	60	58	54	77	64	63	69	69	63	73	60	--	61	77	62	65	69	58		67	62	64		66	62	67	62	62
22 Fri	81	69	62	55	65	68	63	54	58	--	51	60	60	57	75	62	61	67	68	62	72	58	--	61	76	64	64	65	62		65	61	62	59	65	61	65	61	62
23 Sat	81	67	61	54	65	68	62	53	57	--	48	60	57	53	74	60	59	66	66	62	70	57	--	58	74	60	62	--	60		65	59	61	58	64	60	64	61	61
24 Sun	80	68	61	54	64	68	61	52	57	--	50	59	58	51	76	62	60	67	67	59	69	57	--	60	75	62	61	--	59		65	58	61	59	63	59	63	59	61
25 Mon	79	68	62	54		68	63	55	60	--	47	59	55	52	75	62	61	66	68	61	70	63	--	58	77	66	66	--	61		66	60	62	60	64	62	64	60	61
26 Tue	82	66	59	54	61	69	65	57	63	--	49	59	54	50	74	61	62	65	67	58	68	57	--	57	74	60	61	--	60		63	59	61	61	63	61	64	61	60
27 Wed	81	65	59	52		68	64	59	63	--	51	59	56	48	72	59	61	64	65	64	68	61	--	61	73	68	63		63		63	60	58	59	61	61	61	57	57
28 Thu	80	67	61	54	62	66	62	56	62	59	46	58	58	54	73	59	59	65	65	59	67	55	--	56	72	62	60	63	58		63	59	59		62	61	62	60	59
29 Fri	80	67	61	55	64	69	63	56	61	58	54	62	61	56	75	62	60	66	68	61	69	57	--	59	74	61	62	66	60		65	60	61	59	64	61	64	60	61
30 Sat	80	68	62	55	65	69	62	52	58		51	60	55	54	75	62	61	66	67	60	70	59	--	60	76	61	63	66	61		65	59	62	59	66	61	65	63	62
31 Sun	80	68	61	54	64	68	62	54	59	58	49	56	55	54	74	60	60	65	65	59	69	56	--	58	74	60		65	61		64	59	61	58	63	60	64	60	60

* = Not Required for Title 21 Reporting

November	AIR1	PDR1	PDR2	PDR3*	ESG1	ESG2	ESG3	ESG4*	ESG5	DEL1*	WCH1*	WCH2	WCH3	WCH4*	WCH5	WCH6	ING1	ING2	ING3	ING4	ING6	ING5*	ING7*	ING8	LN1	LN2	LN3	LN4	ATH1*	ATH2	SLA1	SLA2*	SLA3	SLA4*	SLA5	SLA6*	SLA7	SLA8*	SLA9*
1 Mon	80	67	62	57	64	68	65	59	65	60	55	62	64	58	73	61	60	65	65	60	68	59	--	57	74	61	65	67	59		63	60	59	57	63	60	63	58	59
2 Tue	80	65	58	56	63	68	65	56	65	62	52	62		59	72	59	59	63	64	61	68	57	--	55	74	59	63	64	60		62	57	59	58	62		62	58	58
3 Wed	80	65	59	57	63	68	64	57	64	63	54	61	60	55	72	58	59	63	64	62	69	58	--	56	74	64	63	66	59		62	60	57	57	63		63	59	58
4 Thu	81	66	59	51	62	67	64	56	66	62	55	61	60	58	72	59	59	64	65	58	68	55	--	55	73		61	63	58		66	58	55		61	63	63	59	59
5 Fri	81	67	60	55	62	66	63	55	61	58	55	62	61	57	73	61	59	64	65	58	68	60	--	58	73		62	64	59		65	59	57	58	63		63	62	61
6 Sat	80	67	61	55	64	68	61	51	55	56	56	61	58	58	75	61	63	65	66	64	70	67	--	59	76	70	66	70	60		65	59	62	58	62	60	63	60	61
7 Sun	81	68	62	55	64	69	63	55	59		53	58	55	50	75	62	62	66	67	59	69	56	--	58	75		62	65	60		65	58	60	59	64	60	64	60	61
8 Mon	79	67	61	59	64	68	63	55	61	60	50	59	55	54	74	61	60	66	66	61	71	63	--	59	76	61	63	68	61		64	60	62	58	65	60	65	61	61
9 Tue	80	67	62	59	65	69	64	58	63	59	49	59	60	56	73	60	60	65	66	60	69	60	--	58	74		64	67	59		65	58	60	58	63	60	63	59	63
10 Wed	81	67	61	55	65	69	64	58	62	59	53	60	58	55	74	61	61	66	68	61	70	57	--	59	73	60	60	64	61		66	60	60	59	63	62	64	62	62
11 Thu	81	66	59	50	63	67	63	56	62	61	51	59	57	51	72	57	57	63	64	57	67	59	--	55	72	59	61	63	59		63	58	58	57	62		62	58	58
12 Fri	80	66	59	53	63	66	65	58	64	62	53	61	58	55	73	60	59	64	65	59	68	59	--	56	73	58	63	64	58		64	58	58	57	62		64	58	59
13 Sat	79	64	57	50	61	65	62	55	64	61	50	61	60	55	71	58	59	63	63	61	67	56	--	58	72	65	62	64	58		64	58	60	56	61		62	59	57
14 Sun	80	66	60	54	63	66	62	55	61	59	55	63	60	56	74	60	59	65	66	58	68	55	--	56		58	63	64	59		64	57	60	58	63	62	63	59	60
15 Mon	80	67	62	56	64	67	61	54	61	58	56	64	58	55	74	60	61	65	66	61	70	64	--	57	73	66	65	68	60		65	59	63	58	64	62	63	59	61
16 Tue	81	68	62	55	64	68	63	57	60	57	53	62	61	56	75	61	61	67	68	59	72	59	--	59	75	61	62	65	60		66	59	60	60	63	62	63	58	60
17 Wed	82	70	63	59	65	68	62	54	56	54	54	62	61	60	74	63	61	65	66	61	69	58	--	58	74	62	63	65	61		68	59	60	58	63	59	64	59	60
18 Thu	80	68	62	56	64	68	62	53	58	54	52	60	63	58	76	62	62	68	69	63	70	59	--	58	76	62	63	66	60		65	60	61	59	64	59	65	61	60
19 Fri	80	70	63	57	65	68	62	53	57	53	53	61	62	55	76	62	61	68	68	61	69	58	--	58	74	63	64	66	60		66	60	60	60	64	61	64	60	63
20 Sat	80	68	62	57	65	68	62	54	58	57	54	59	58	56	74	64	64	66	67	67	71	60	--	64	75	68	65	67	61		65	63	62	60	64	63	65	61	61
21 Sun	80	69	63	56	65	69	64	56	61	56	53	59	60	56	76	63	62	67	68	62	70	59	--	59	76	62	65	67	62		66	61	62	60	65	60	66	61	61
22 Mon	80	68	63	57	65	69	64	57	62	58	55	61	59	54	74	61	60	66	66	62	69	58	--	59	74	61	62	65	61		64	59	61	59	64	62	65	61	60
23 Tue	81	70	64	59	65	69	65	58	62	59	57	63	60	61	76	63	62	67	68	63	71	59	--	60	76	63	64	67	62		67	60	62	61	65	63	65	61	62
24 Wed	80	69	63	54		69	65	57	63	60	52	58	57	54	75	62	62	67	68	64	71	58	--	63	74	66	62	66	62		66	63	62	61	65	64	66	62	63
25 Thu	80	65	59	51	--	66	62	58	62	57	50	58	54	52	71	58	59	63	63	57	66	57	--	55	71	--	60	63	58		61	56	58	57	60	60	60	58	56
26 Fri	78	64	57	49	--	65	62	59	62	59	46	55	53	53	71	57	57	62	63	57	67	54	--	56	73		61	64	57		61	55	58	55	61	63	62	58	59
27 Sat	78	69	62	55	--	68	64	57	64	60	52	58	60	56	74	62	61	66	67	60	70	58	--	60	75	64	65	67	61		65	60	62	60	64	61	66	62	62
28 Sun	79	67	61	51	--	68	64	56	63	61	52	--	55	50	74	62	60	65	67	61	70	58	--	59	76	62	63	67	62		64	60	63	58	65	60	65	61	60
29 Mon	79	66	61	54	--	67	63	57	63	59	50	--	61	55	73	60	59	64	65	57	67	57	--	54	72	62	62	63	58		62	57	59	56	61	62	61	58	58
30 Tue	79	65	58	56	--	66	63	57	63	61	46	--	53	51	71	57	58	63	63	58	69	56	--	53	72	59	60	63	58		61	54	58	55	61	62	61	59	56

* = Not Required for Title 21 Reporting

December	AIR1	PDR1	PDR2	PDR3*	ESG1	ESG2	ESG3	ESG4*	ESG5	DEL1*	WCH1*	WCH2	WCH3	WCH4*	WCH5	WCH6	ING1	ING2	ING3	ING4	ING6	ING5*	ING7*	ING8	LNX1	LNX2	LNX3	LNX4	ATH1*	ATH2	SLA1	SLA2*	SLA3	SLA4*	SLA5	SLA6*	SLA7	SLA8*	SLA9*
1 Wed	78	64	57	54	--	66	63	59	64	62	48		58	53	73	59	58	63	64	57	67	54	--	56		61	63	66	59		62	55	58	55	61	63	62	59	57
2 Thu	80	67	60	54	--	67	64	61	65	58	52	63	63	56	75	61	60	65	67	59	68	58	--	54		60	62	64			64	57	58	58	61	63	61	57	59
3 Fri	81	68	62	61		68	63	56	62	59	59	66	61	56	74	61	60	66	66	62	69	58	--	59		60	65	66			64	58	61	58	64	64	65	60	59
4 Sat	81	67	61	55	65	69	62	54	59	54	54	60	56	57	73	60	59	65	66	59	68	57	--	57	75	59	61	65	60		64	59	61	58	62	60	63	58	59
5 Sun	82	68	62	56	65	68	63	56	61	57	54	61	57	54	75	61	61	66	67	63	70	58	--	61	74	65	63	66	61		65	60	62	59	64	62	64	60	63
6 Mon	80	67	63	58	64	68	65	61	64	63	53	62	61	59	74	63	66	66	67	69	72	64	--	67	76	73	69	70	66		66	65	66	59	67	65	65	62	62
7 Tue	80	67	60	57	65	69	67	62	68		51	61	60	57	74	60	60	65	65	63	69	58	--	57	75	61	65	66	60		63	58	61	57	64		64	59	59
8 Wed	81	68	61	55	65	68	65	59	66	62	52	63	63	58	74	61	60	65	67	60	69	55	--	58	73	62	64	65	59		65	61	60	58	63	61	63	61	60
9 Thu	82	67	61	54	65	68	63	57	62	58	55	64	61	59	75	61	61	66	67	60	70	56	--	60	73	62	63	66	60		65	62	61	60	64	63	65	61	61
10 Fri	82	67	61	54	65	69	66	65	66	63	53	62	60	57	76	62	63	67	68	63	72	59	--	62	77	63	66	68	63		67	61	63	59	66	63	66	62	62
11 Sat	81	67	60	56	64	68	64	61	64	62	55	61	57	56	74	61	61	65	67	63	71	60	--	60	76	65	66	69	62		64	61	63	58	65	65	66	61	60
12 Sun	80	66	59	51	63	67	65	60	65	62	49		52	55	73	59	58	64	65	57	68	53	--	56	73	59	60	65	59		64	58	59	58	65	65	63	59	59
13 Mon	81	66	61	55	64	67	64	59	65	60	49		59	55	74	61	60	65	66	59	68	56	--	56	73	62	61	64	59		64	59	59	58	62	60	63	62	61
14 Tue	80	67	60	55	64	67	61	52	57		50		55	52	75	62	61	66	67	60	72	57	--	59	77	62	64	67	61		65	60	62	59	65	61	65	60	60
15 Wed	81	68	61	57	65	68	62	55	57	56	51		56	54	76	62	62	67	68	62	70	60	--	59	75		63	66	60		66	60	62	60	63	60	64	59	62
16 Thu	82	69	63	58	66	69	63	59	58	53	55		59	56	75	62	61	67	67	61	70	56	--	59	75	63	64	66	62		65	62	62	60	64	62	64	61	62
17 Fri	80	68	61	58	63	66	60	50	57	62	57		64	62	74	68	67	68	66	72	73	64	--	69	76		69	70	62		62	66	64	58	64	66	65	62	61
18 Sat	73	66	57	57	59	62	55	45	56	64	55		64	60	73	69	70	68	67	75	74	67	--	73	78		72	73			66	70	67	62	67	68	67	65	62
19 Sun	78	69	63	58	--	67	61	52	56	61	56		65	61	77	66	69	69	70	73	74	64	--	71	79		70	71			68	68	65	62	67	66	67	63	64
20 Mon	81	70	64	--	64	69	64	56	60	55	56		62	60	76	63	61	67	68	68	71	57	--	61	75		63	66			66	61	62	61	65	62	65	61	63
21 Tue	80	69	64	--	64	68	63	56	61	60	58		62	60	75	67	67	67	72	73	73	63	--	70	75		67	69			65	67	64	61	64	67	65	60	63
22 Wed	80	68	64	59	63	68	62	56	61	62	58		63	63	75	67	69	68	69	73	74	65	--	71	78			71			67	68	66	62	66	67	67	65	64
23 Thu	82	68	62	58	66	70	64	56	61	56	53		59	56	75	62	62	66	67	61	71	58	--	60	76	63		67	62		66	61	63	62	65	62	66	62	62
24 Fri	81	69	62	56	65	68	63	59	63	60	50		62	58	74	61	63	65	66	60	70	56	--	58	74	62	62	66	61		65	62	61	59	64	63	65	61	61
25 Sat	81	68	62	56	64	68	62	56	59	54	54		62	57	73	60	59	65	66	61	68	56	--	59	74	60	62	65	60		64	58	61	58	61	61	64	60	61
26 Sun	79	68	61	55	64	68	64	59	63	61	51		58	57	75	62	61	66	67	61	70	58	--	59	75	64	64	67	61		66	60	62	60	64	62	65	60	62
27 Mon	80	67	62	55	63	67	64	61	65	62	48		57	53	73	61	60	65	66	62	69	56	--	57	73	61	62	65	61		64	58	61	60	64	64	63	60	60
28 Tue	80	68	62	57	64	68	64	57	64	57	54		56	55	75	62	60	66	67	63	69	56	--	58	74	61	63	65	61		65	62	61	61	64	63	64	59	62
29 Wed	81	69	62	58	66	70	65	58	62	59	53		56	53	76	64	62	67	68	63	71	59	--	--	77	63	64	68	63		66	61	64	61	66	63	66	62	63
30 Thu	80	67	60	51	65	69	64	57	61	61	47		52	47	74	62	60	65	67	60	70	58	--	57	74	61	61	65	60		64	61	62	59	63	61	64	60	60
31 Fri	80	67	60	55	64	67	63	57	62	57	55		57	57	73	60	63	64	65	59	69	55	--	58	72	58	61	64	62		63	58	60	58	64		63	60	60

* = Not Required for Title 21 Reporting



Runway Utilization Report
 Summary of Runway Use (Average)
 Los Angeles International Airport

Period : 10/01/2010 to 12/31/2010

Airline : ALL

Aircraft : ALL

Time Period	Percent Daily Operations Per Runway								Average Operations	Runway Complex		Runway Flow		In Board	Out Board	
	06L	06R	07L	07R	24L	24R	25L	25R		South	North	West	East			
Departures																
Total Hours																
24 Hours	<1%	1%	2%	<1%	37%	<1%	4%	56%	766	61%	39%	97%	3%	96%	4%	
CNEL Hours																
0700 - 1900	<1%	1%	1%	<1%	40%	<1%	3%	53%	528	58%	42%	97%	3%	96%	4%	
1900 - 2200	<1%	2%	2%	0%	41%	<1%	5%	49%	88	56%	44%	96%	4%	94%	6%	
2200 - 0700	<1%	1%	3%	<1%	24%	<1%	3%	69%	149	75%	25%	96%	4%	96%	4%	
Contra Hours																
Midnight - 0630	0%	<1%	4%	<1%	19%	<1%	4%	71%	67	80%	20%	95%	5%	95%	5%	
0630 - Midnight	<1%	1%	2%	<1%	39%	<1%	3%	54%	699	59%	41%	97%	3%	96%	4%	
Arrivals																
Total Hours																
24 Hours	1%	2%	2%	2%	<1%	43%	48%	1%	757	53%	47%	93%	7%	6%	94%	
CNEL Hours																
0700 - 1900	1%	<1%	<1%	1%	<1%	46%	49%	1%	500	52%	48%	97%	3%	2%	98%	
1900 - 2200	2%	<1%	0%	2%	1%	45%	48%	2%	147	52%	48%	97%	3%	4%	96%	
2200 - 0700	2%	10%	14%	4%	<1%	26%	42%	1%	109	61%	39%	70%	30%	26%	74%	
Contra Hours																
Midnight - 0630	3%	26%	37%	7%	<1%	7%	19%	2%	42	65%	35%	28%	72%	64%	36%	
0630 - Midnight	1%	<1%	<1%	2%	1%	45%	49%	1%	715	52%	48%	97%	3%	3%	97%	

All values are rounded to the nearest whole number.



Runway Utilization Report
 Summary of Runway Flow (Average)
 Los Angeles International Airport

Period: 10/01/2010 to 12/31/2010

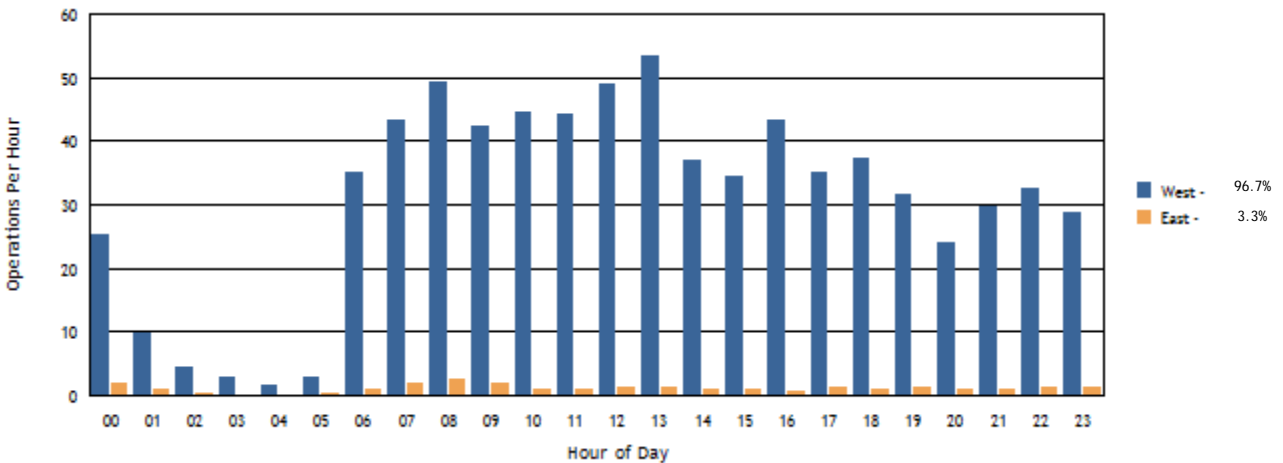
Airline : ALL

Aircraft : ALL

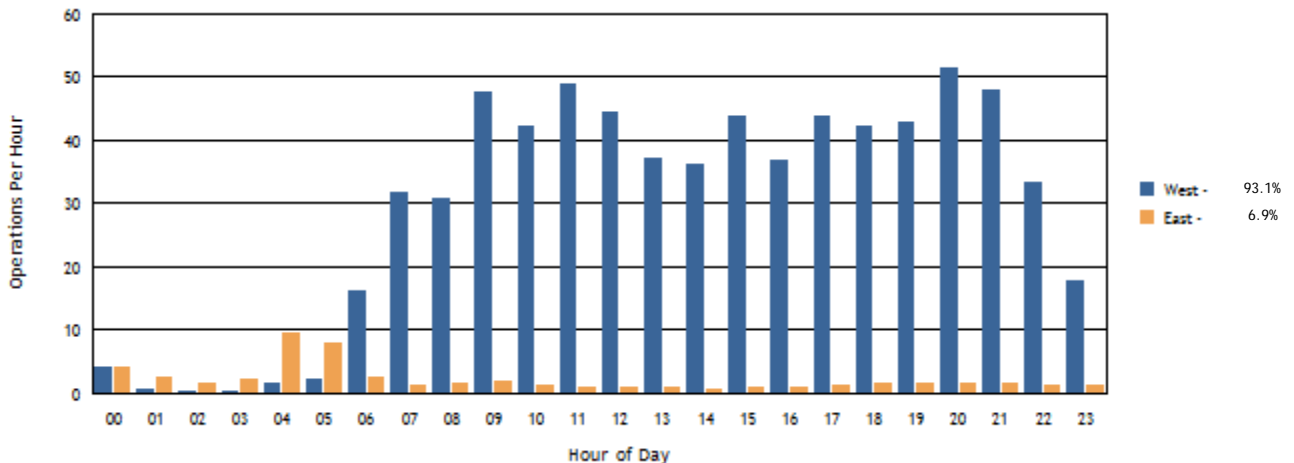
Time Period	Departures			Arrivals			Departures		Arrivals	
	West	East	Average	West	East	Average	West	East	West	East
Total Hours										
24 Hours	741	25	766	704	52	757	97%	3%	93%	7%
CNEL Hours										
0700-1900	513	16	528	486	14	500	97%	3%	97%	3%
1900-2200	85	3	88	142	5	147	96%	4%	97%	3%
2200-0700	143	6	149	76	33	109	96%	4%	70%	30%
Contra Hours										
Midnight - 0630	63	3	67	12	30	42	95%	5%	28%	72%
0630 - Midnight	677	22	699	693	22	715	97%	3%	97%	3%

All percentages are rounded to the nearest whole number.

Departures Per Hour by Operational Direction



Arrivals Per Hour by Operational Direction



Summary of Actions Taken by LAWA to Comply with the Specific Requirements Imposed by Conditions of the Current Noise Variance for Los Angeles International Airport

Fourth Quarter 2010

The Los Angeles World Airports (LAWA) continuously works to operate an airport that maintains the highest possible environmental quality of life for surrounding communities. To that end, LAWA continues to take the following actions:

- LAWA continues to implement its Aircraft Noise Mitigation Program (ANMP), designed to fund the mitigation of all incompatible land uses within the noise impact boundary as defined in the State Noise Standards. LAWA updates the ANMP report periodically to ensure that it reasonably represents the mitigation and funding programs that are in place.
- With each second quarter Quarterly Report, LAWA submits an annual update of the ANMP. This update includes the number of dwellings acoustically insulated, the cost of the program, the anticipated funding availability, and the anticipated completion date of the project.
- LAWA continues to monitor and enforce, as appropriate, all of its informal noise abatement procedures in place at LAX, including but not limited to the early turn program, preferential runway use procedures and over ocean operations procedures.
- LAWA continues to monitor and enforce its maintenance run-up curfew (2300-0600). When applicable, LAWA will include with each Quarterly Report, information regarding monitoring and enforcement activities undertaken during the quarter. There were no enforcement actions reported during the fourth quarter 2010.
- LAWA will continue to evaluate its existing informal noise abatement procedures, and to modify those procedures when necessary.
- LAWA continues its community response efforts by cataloging and responding to aircraft noise related citizen complaints.

- LAWA continues to submit to the State of California Department of Transportation (CalTrans) and the County of Los Angeles the required Quarterly Reports. These reports depict the noise impact area, and report on the incompatible land uses along with the daily and annual CNEL values at each monitoring station.
- With each Quarterly Report, beginning the second quarter 2005, LAWA continues to include tabular data and graphical illustrations describing and comparing the level and type of usage for each runway at LAX during the quarter.