



New Vehicle Service Road

Vehicle Service Road (VSR) Tango is scheduled to open on Monday, August 4, 2014. The new service road is located west of the Tom Bradley International Terminal and will connect VSR Echo to VSR Charlie. Drivers should use caution for possible jet blast along the new roadway. Post 5 will remain closed to airport tenants until further notice.

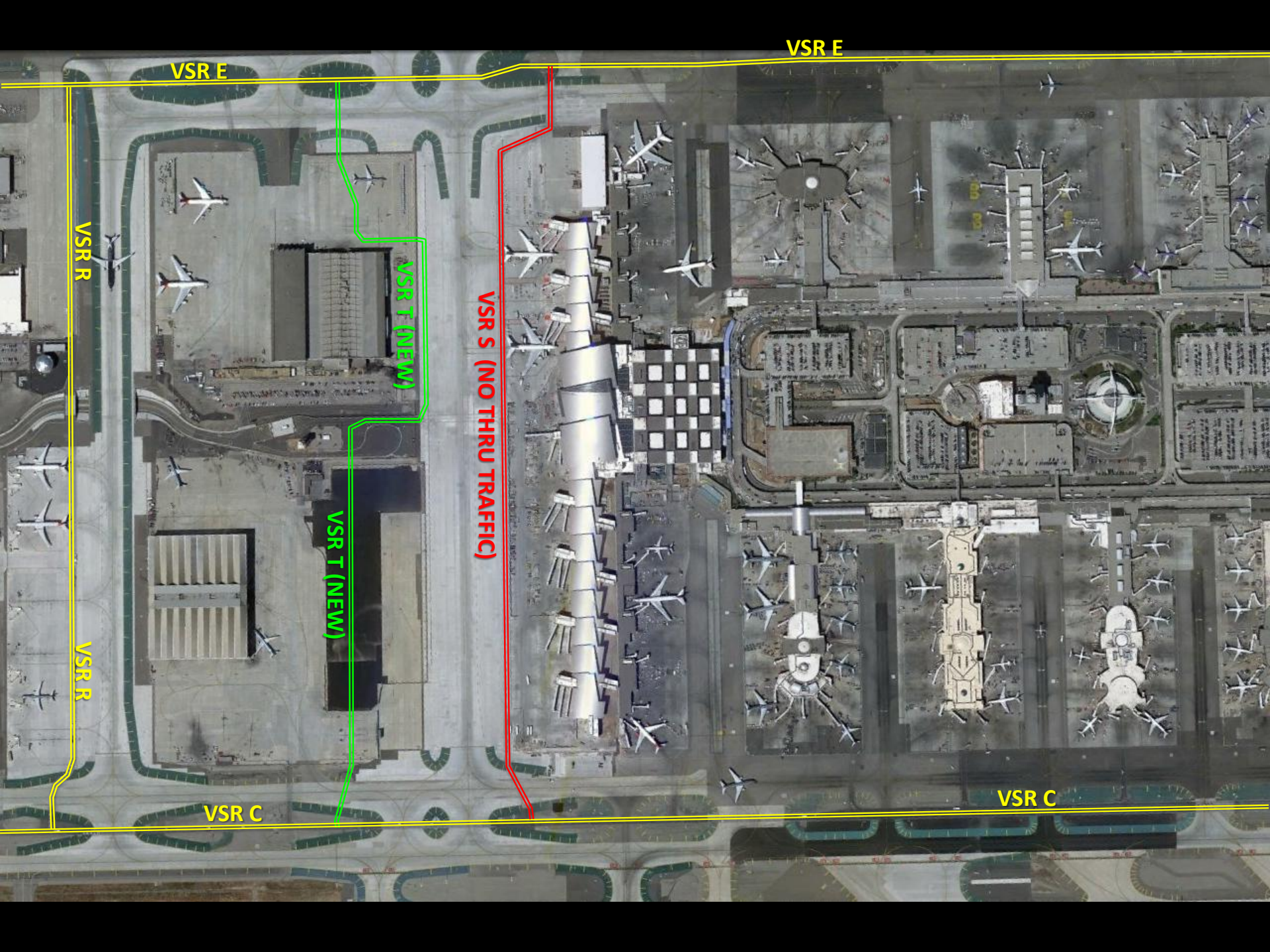
For questions or comments regarding this advisory please contact Airside Manager, Jeff Mort, Jmort@lawa.org.

Issue Date: August 4th 2014

Subject: New Vehicle Service Road

*The LAX Operations Advisory will be posted on LAWA's Airport Operations web site and can be retrieved at <http://www.lawa.org/aiops.aspx>





VSR E

VSR E

VSR R

VSR T (NEW)

VSR S (NO THRU TRAFFIC)

VSR T (NEW)

VSR R

VSR C

VSR C