



Statistical Update on LAX Aircraft Operations

January 10, 2018

LAX/Community Noise Roundtable

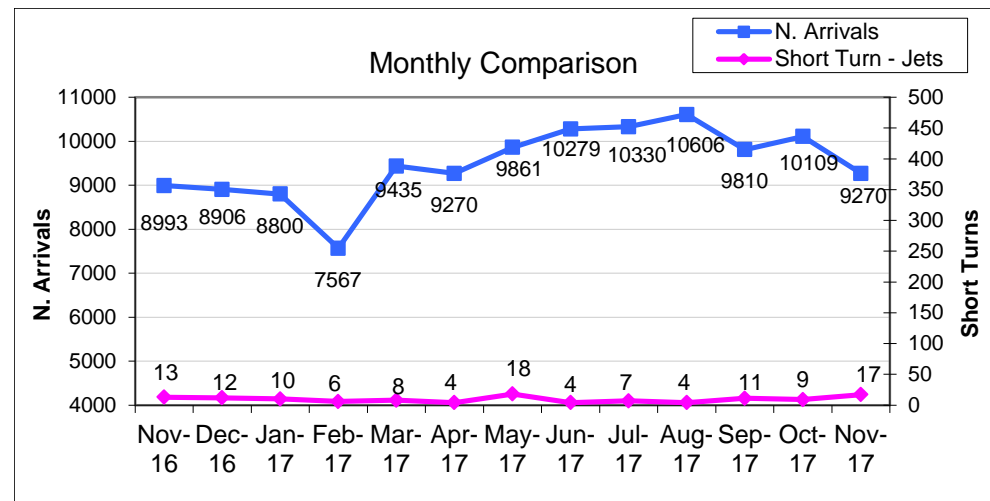
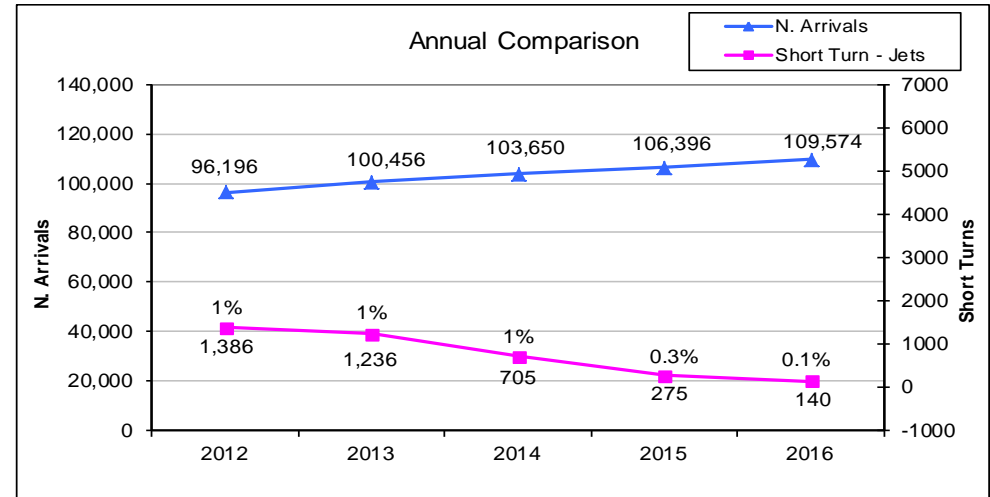
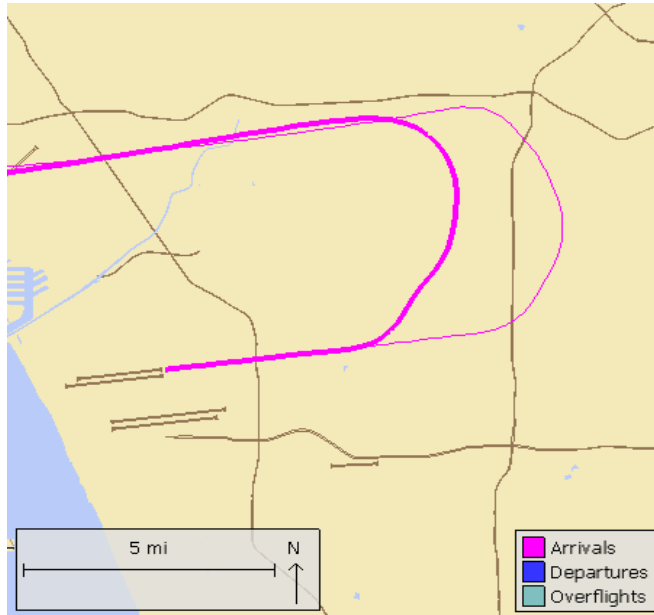
Overview

Statistical information on the following operations:

- Short Turns
- East Departures
- Early Turns
- Go-arounds

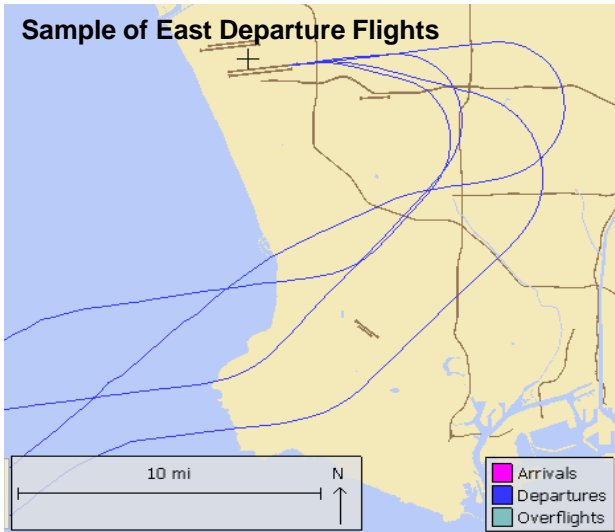
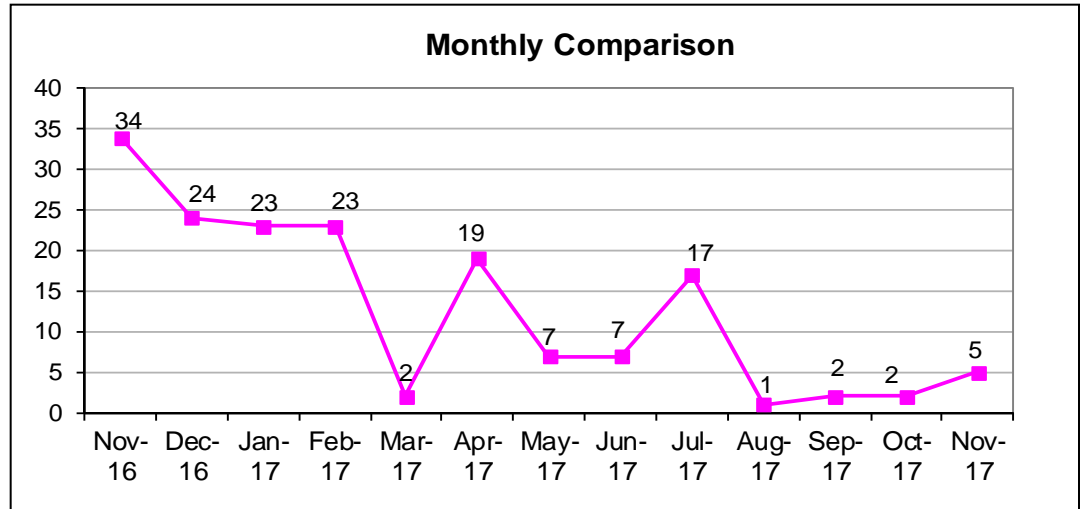
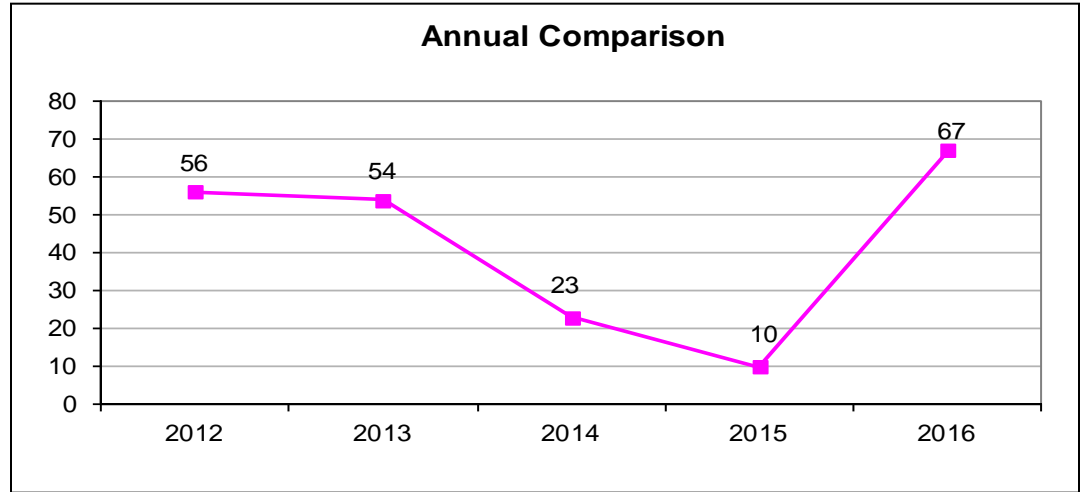
Short Turn Arrivals

Arriving jet aircraft turning early prior to reaching the Harbor Freeway to land at LAX



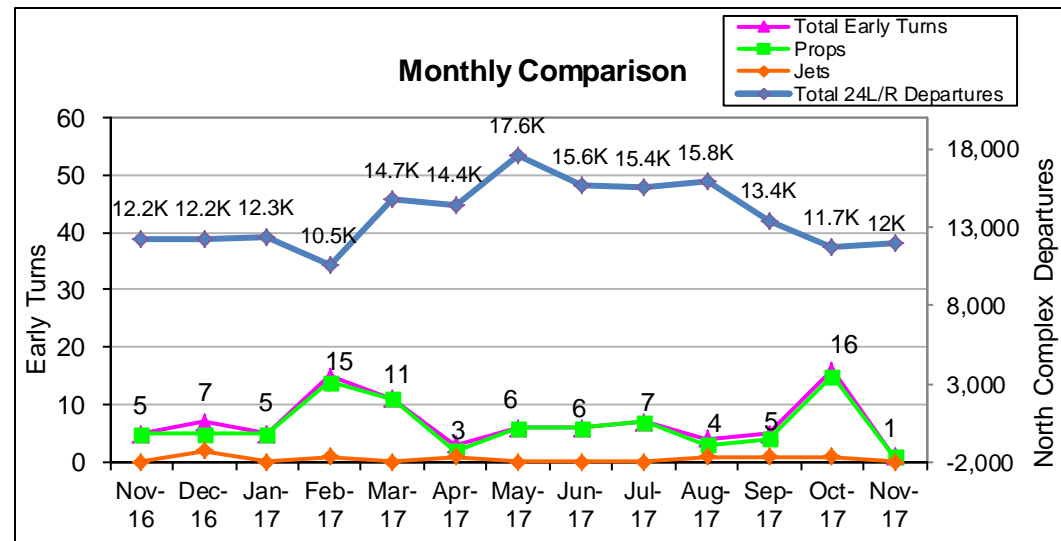
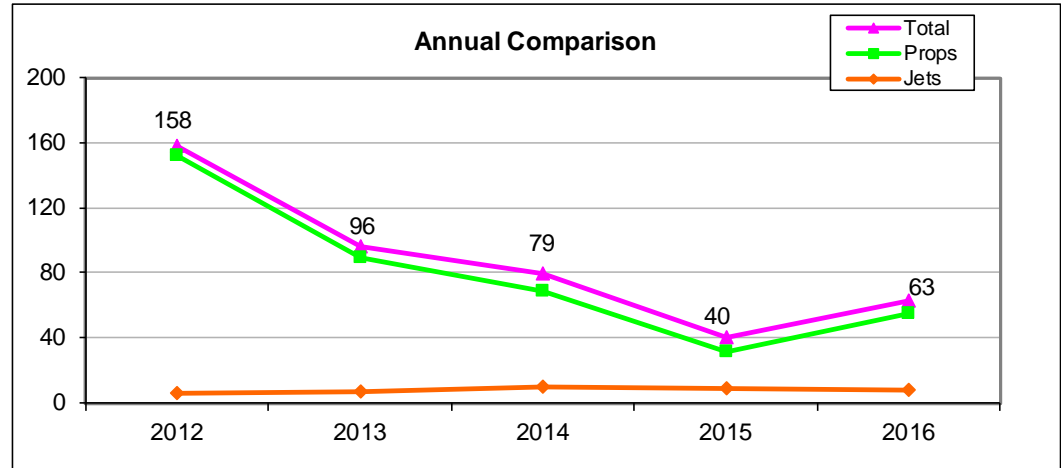
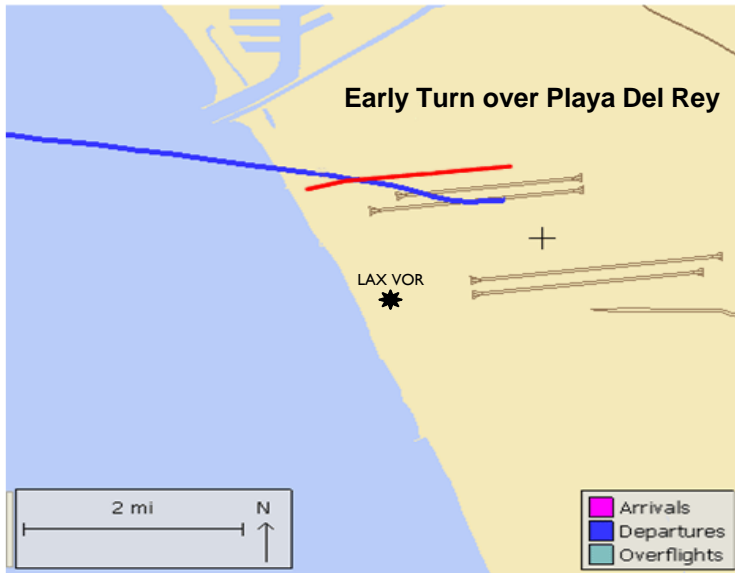
Non-Conforming East Departures Midnight to 6:30 AM

This report shows a summary of aircraft operations departing to the east while the airport is still conducting westerly departures between midnight and 6:30 a.m. These individual easterly departures usually occur when the pilot of a heavy aircraft (e.g. B747s) determines that the tail wind is too great for the weight of the aircraft and requests to depart east into the wind for aircraft safety.



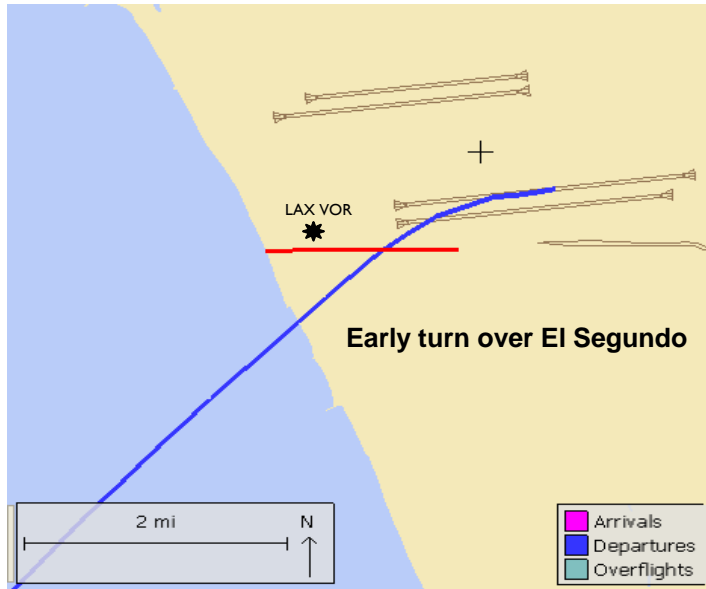
Early Turns to the North

Aircraft departing to the ocean turn early prior to reaching the shoreline

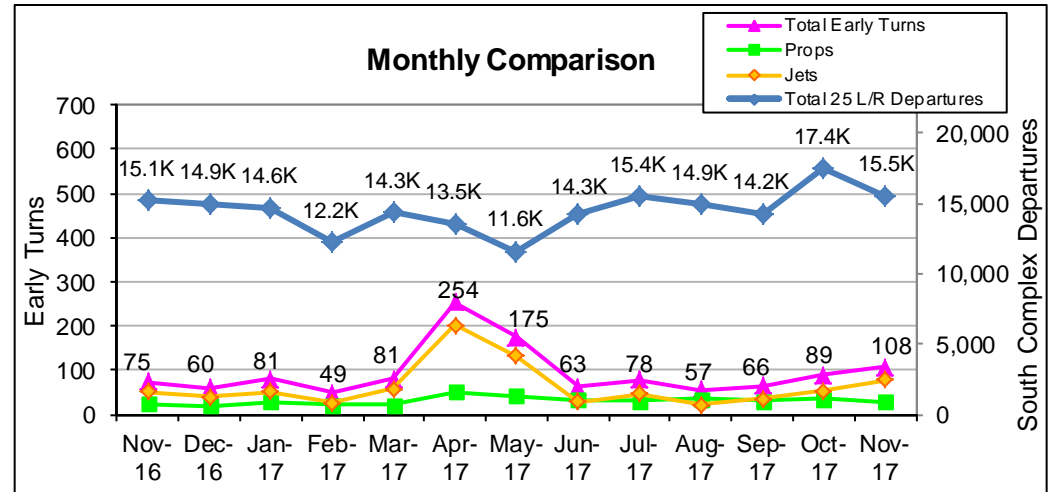
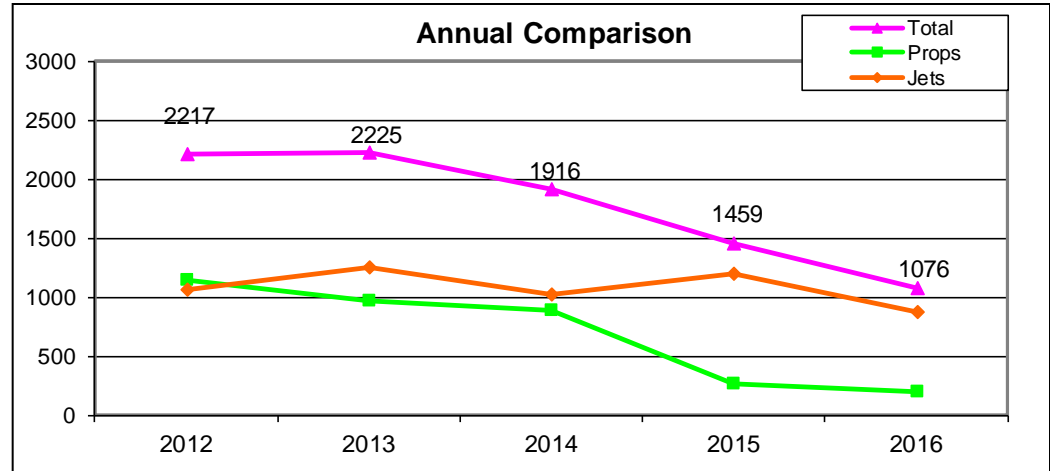


Early Turns to the South

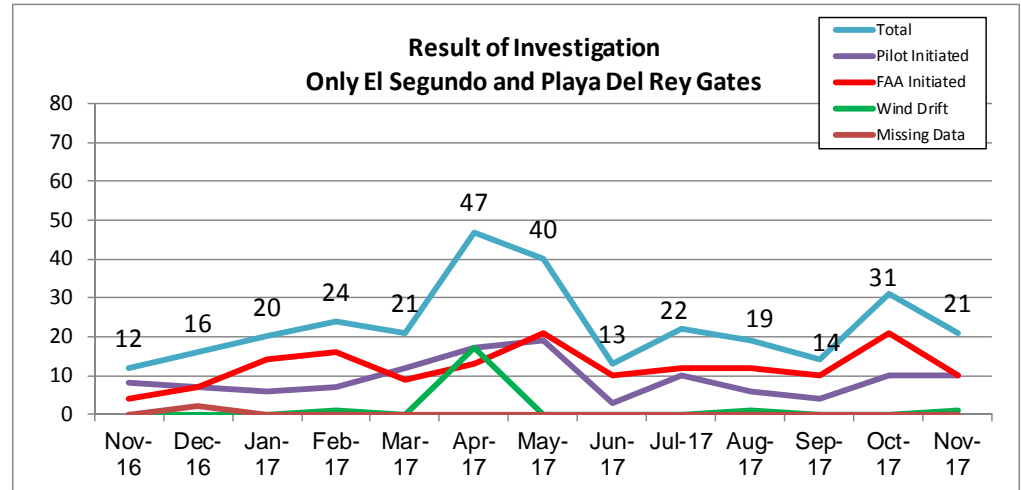
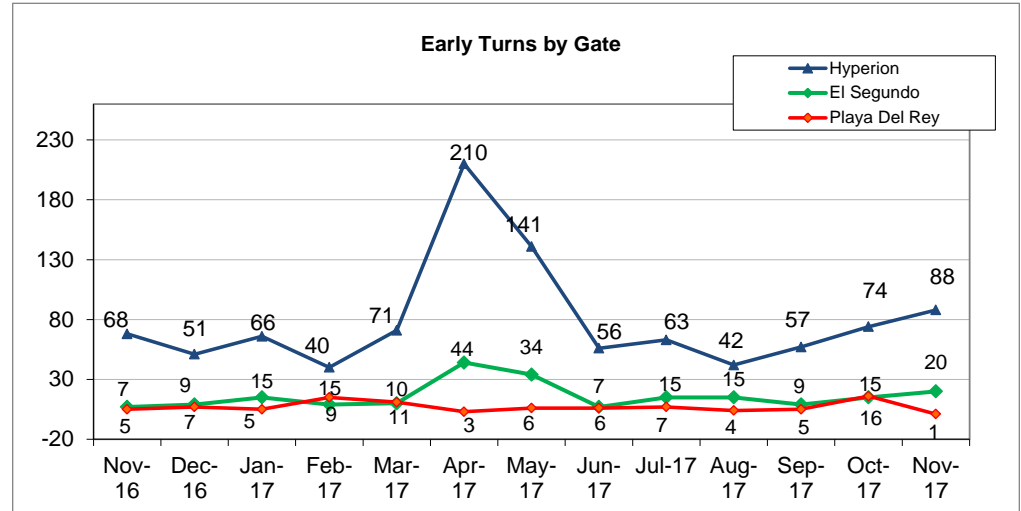
Aircraft departing to the ocean turn early prior to reaching the shoreline



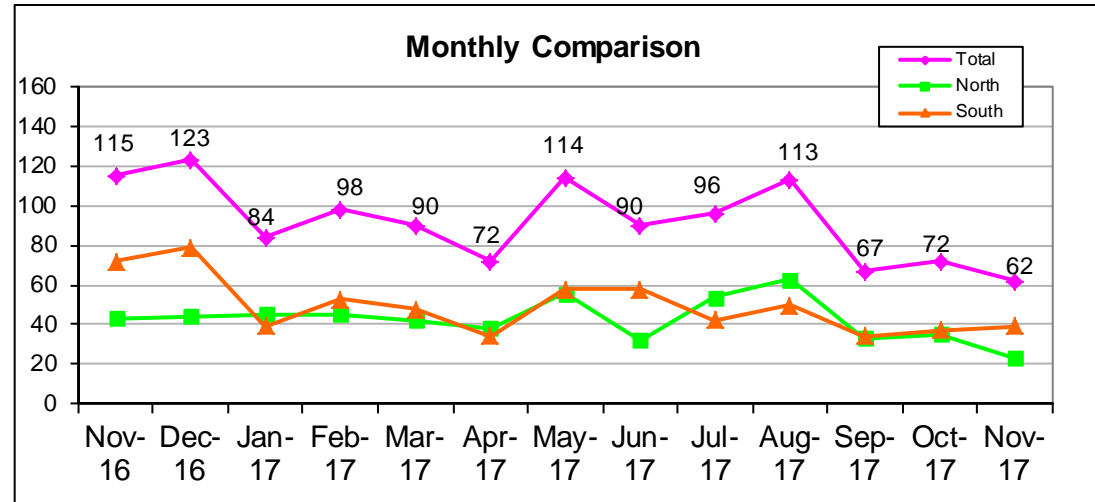
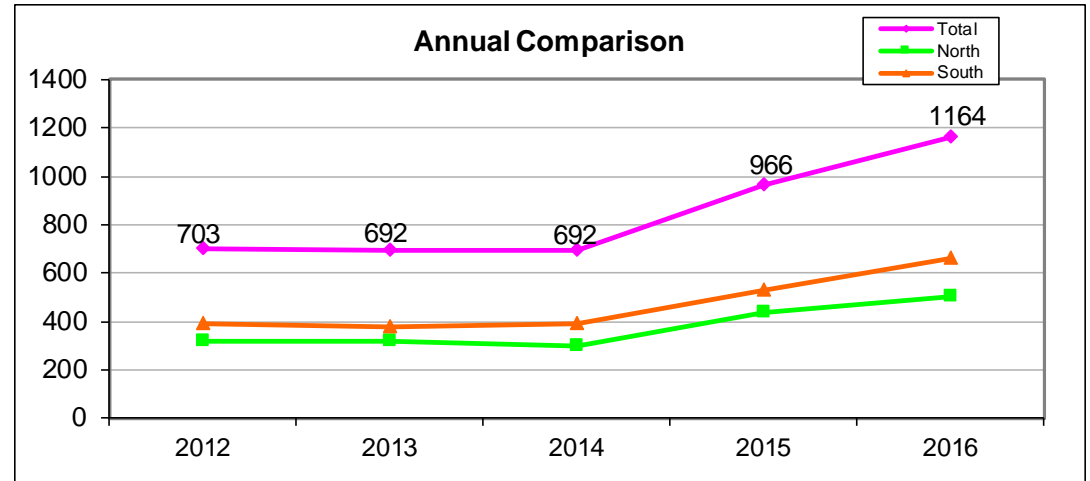
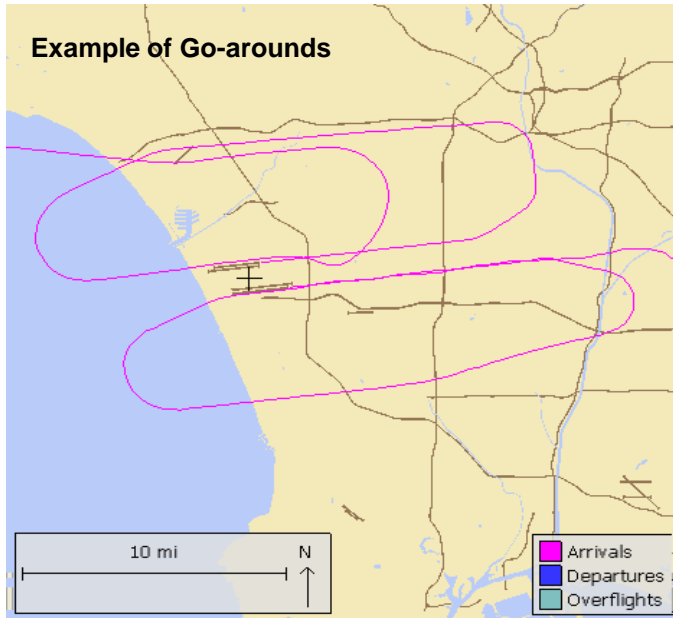
Note: The increase in Early Turns for April and May 2017 is due to Rwy 25R Closure for RSA Construction.



Early Turn Breakdown



Monitoring pilot or ATC initiated go-arounds or missed approaches



Go-Arounds – Not Maintaining RWY Heading

Example of Go-Arounds not maintaining Runway Heading

