



Statistical Update on Aircraft Operations

November 9, 2011

LAX/Community Noise Roundtable



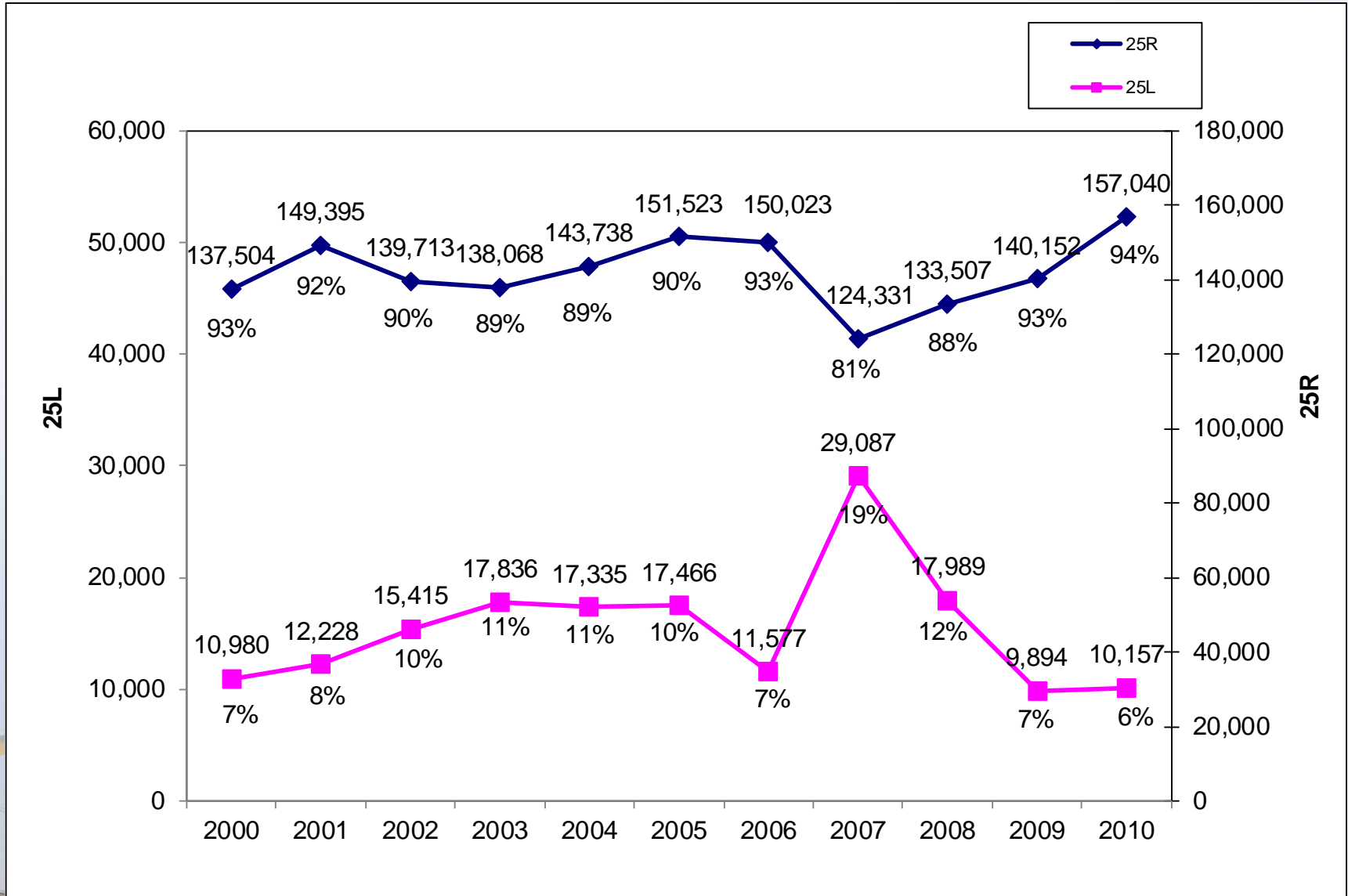
Overview

Statistical information on the following operations:

- 25L Departures
- Palos Verdes Overflights

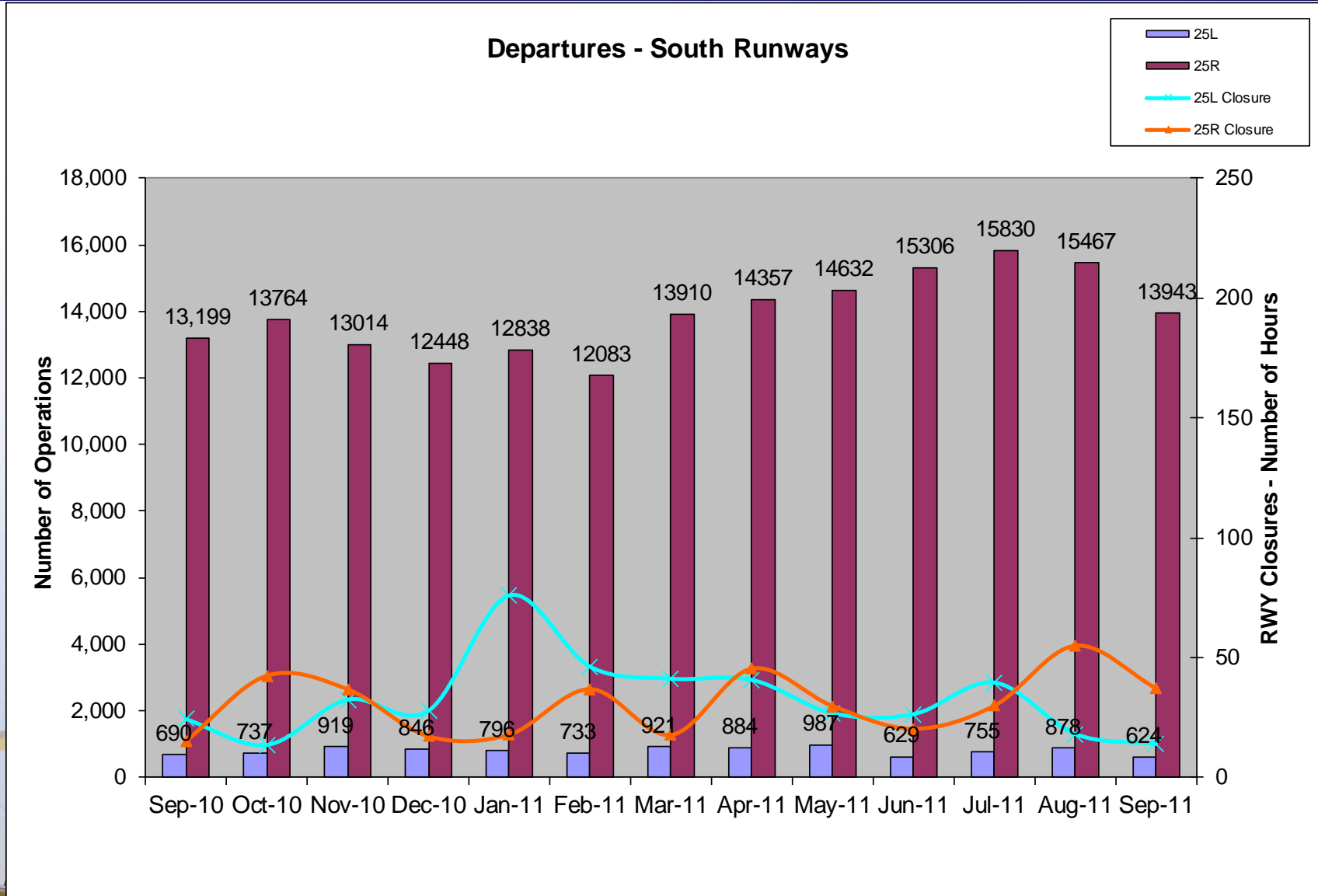


Departures – Runways 25L and 25R Annual Comparison

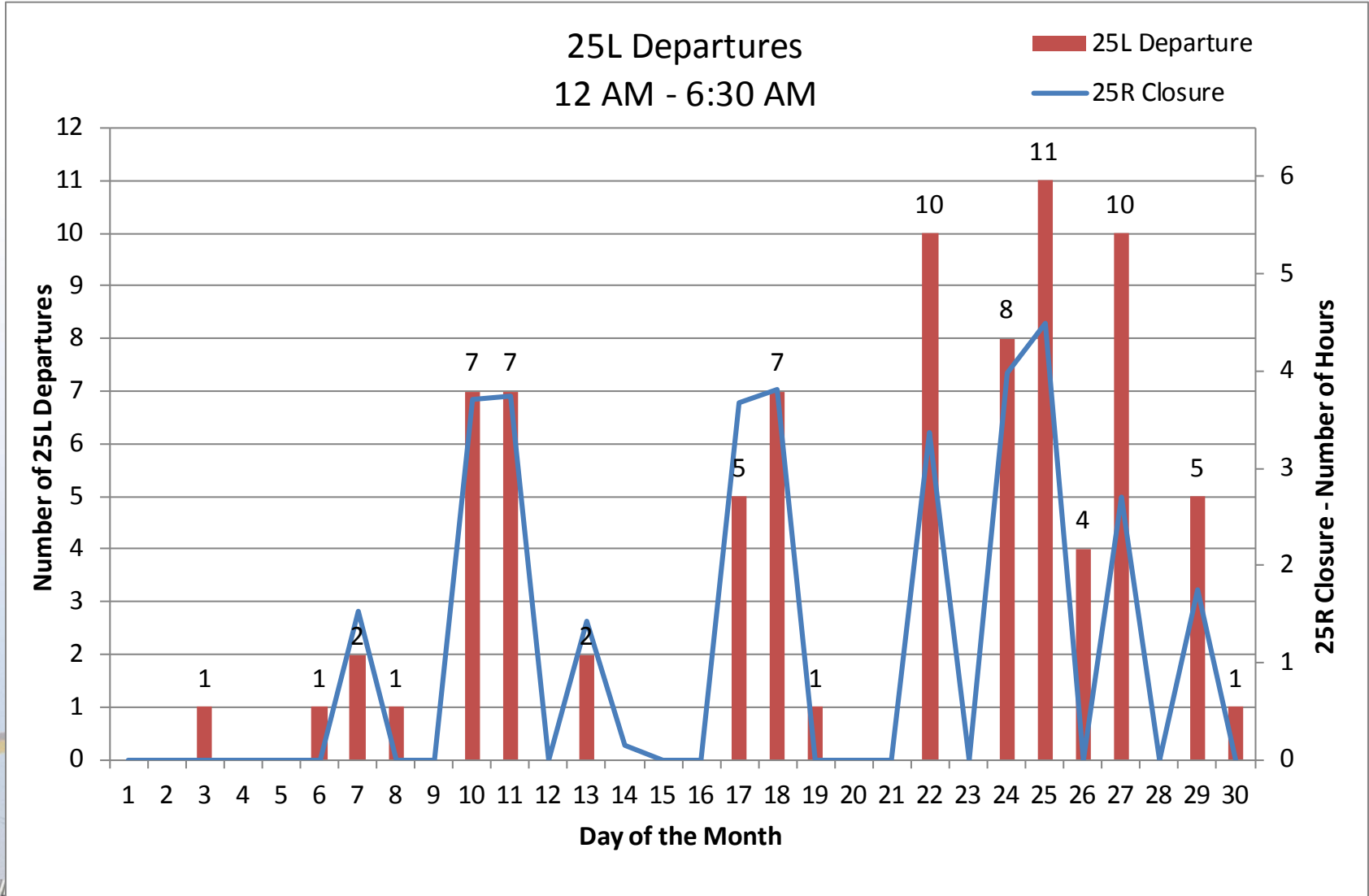


Departures – Runways 25L and 25R

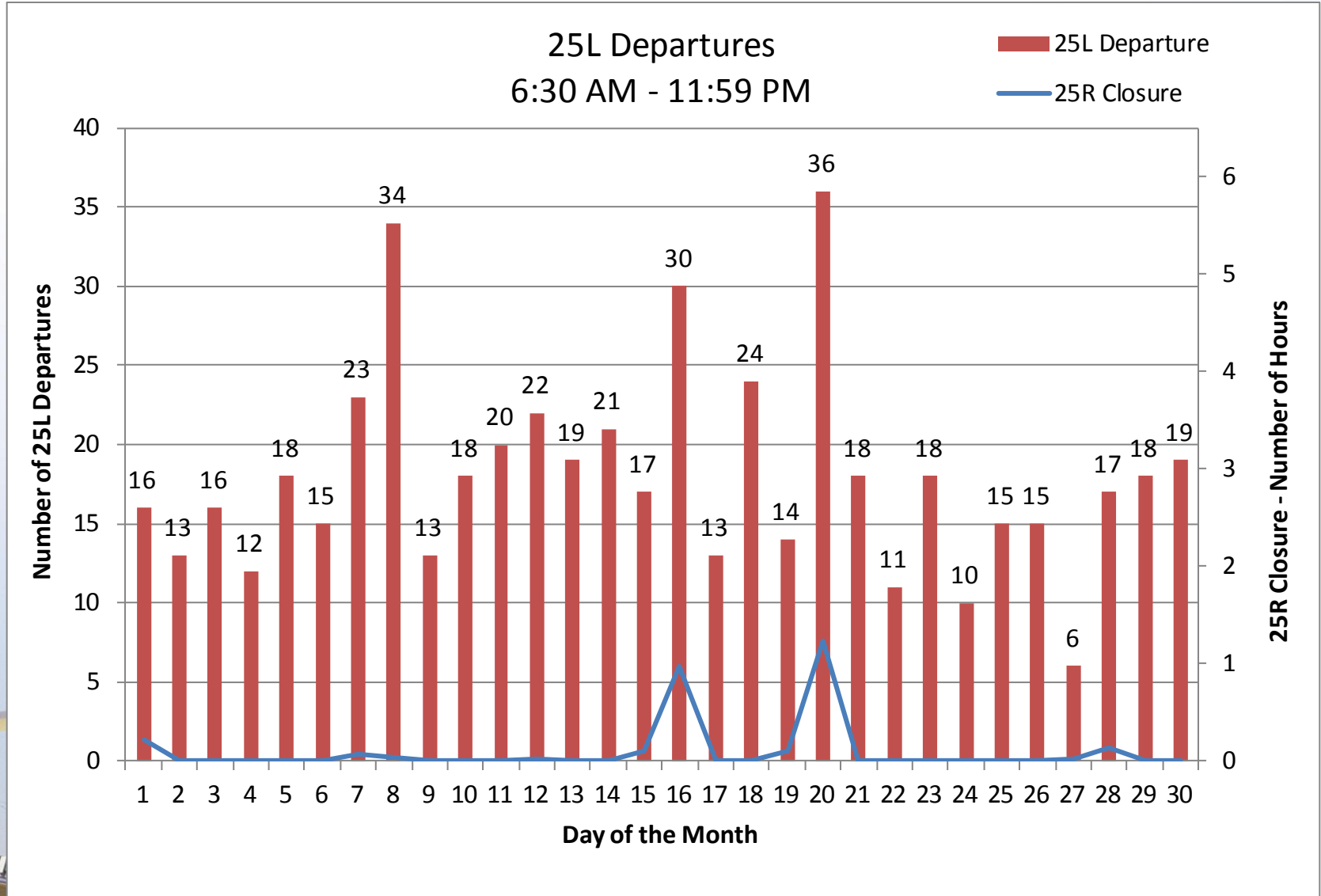
13-month period



25L Departures September 2011

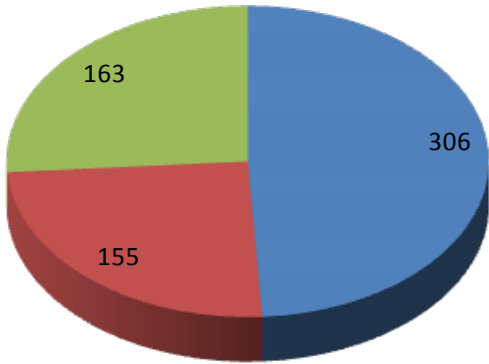


25L Departures September 2011



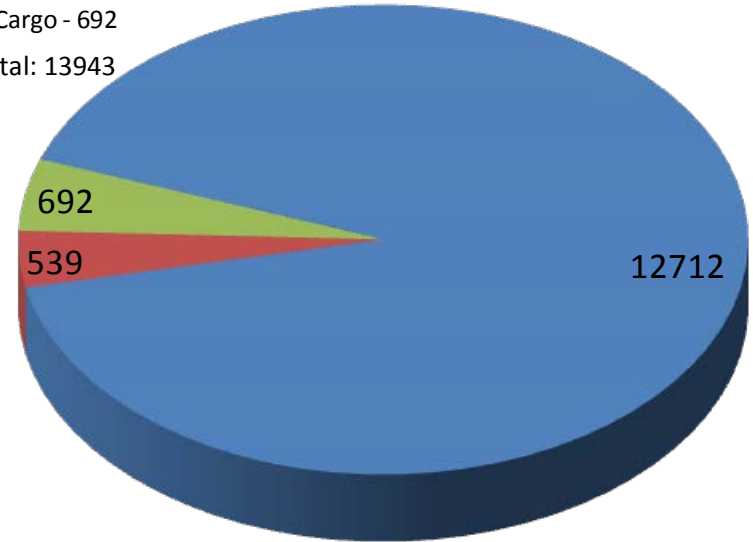
Departure by Operator Type September 2011

25L



■ PAX - 306
■ GA - 155
■ Cargo - 163
Total: 624

25R

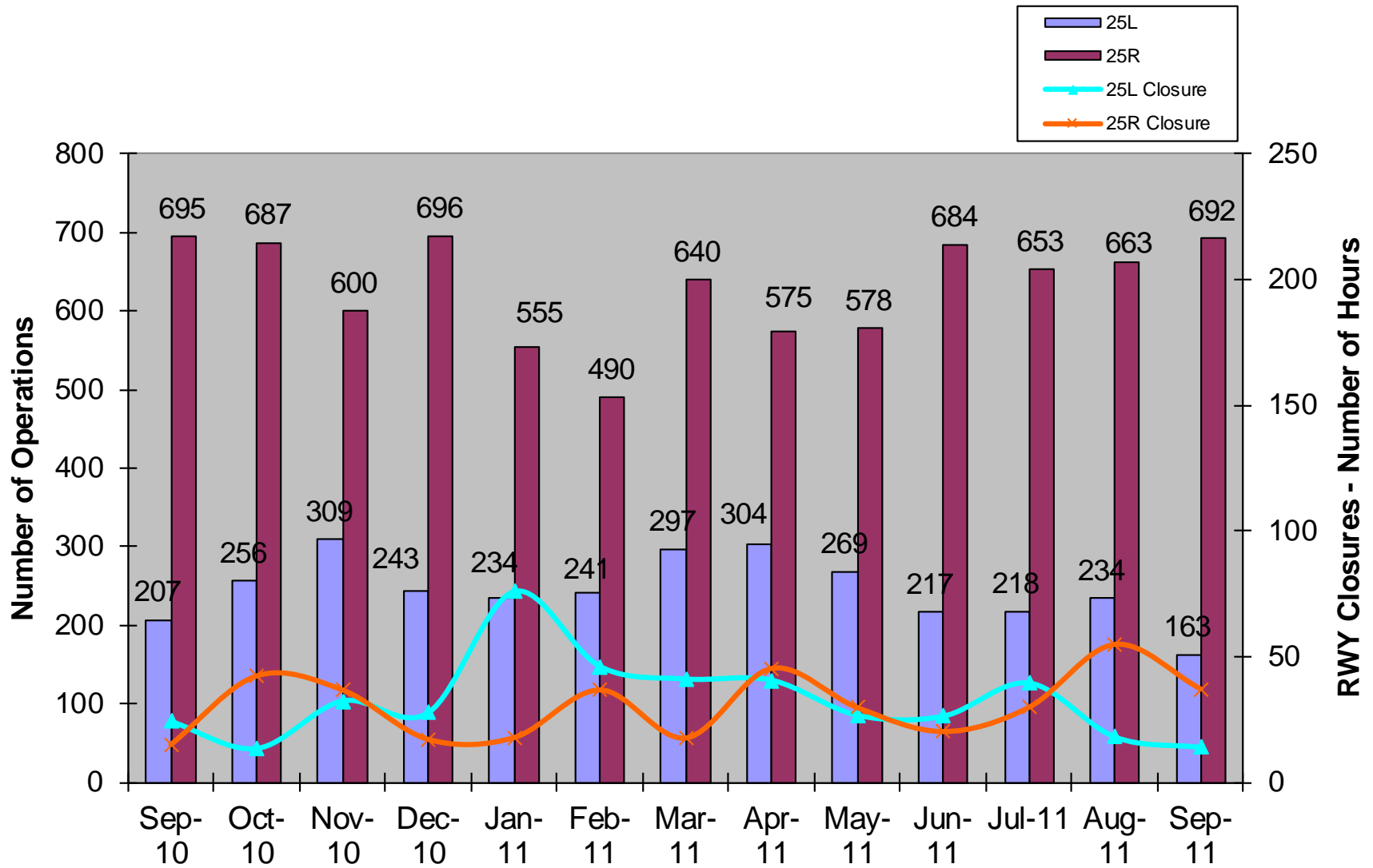


■ PAX - 12712
■ GA - 539
■ Cargo - 692
Total: 13943

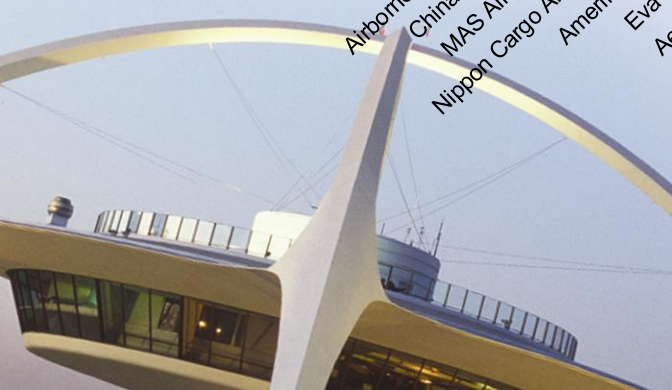
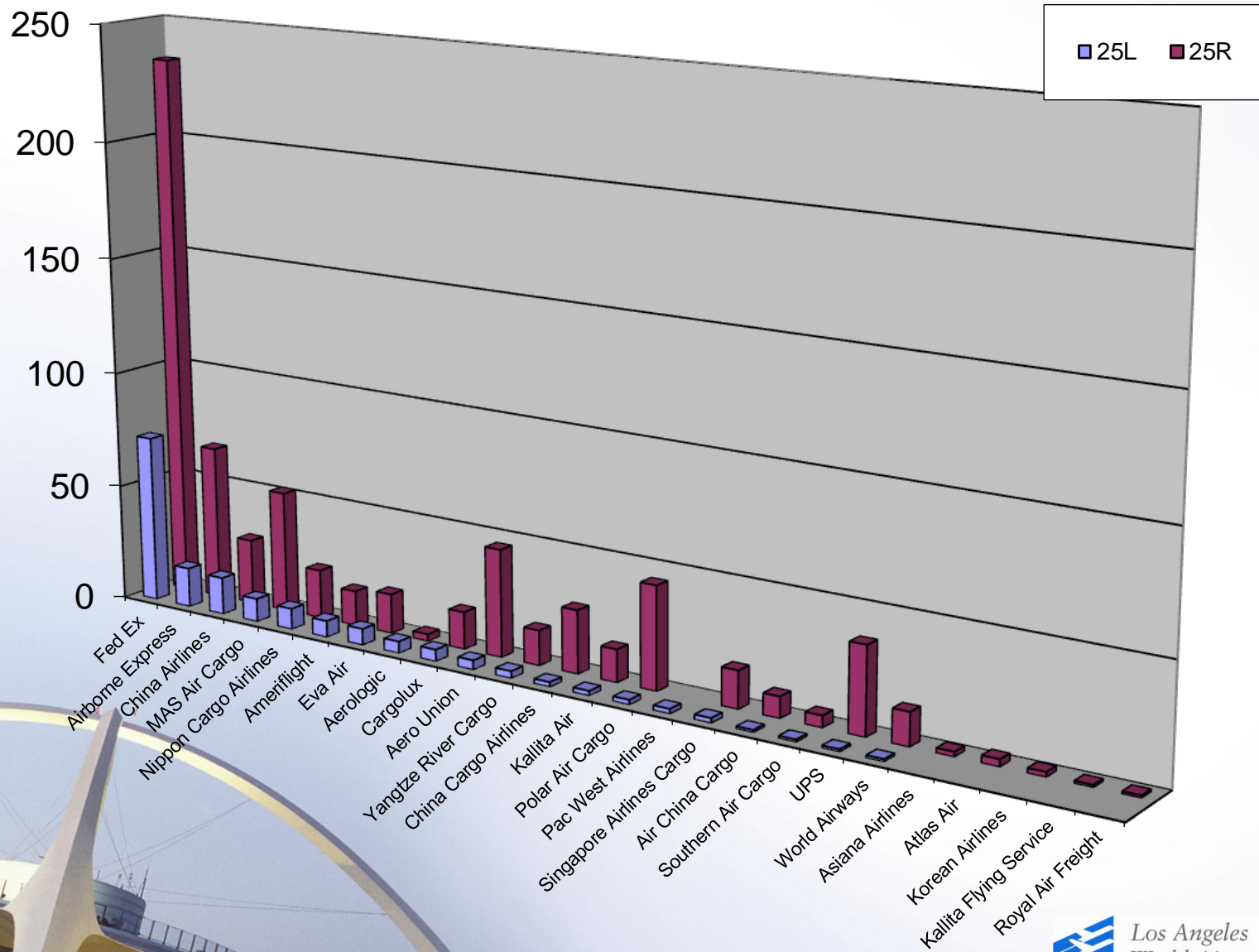


Cargo Departures on 25L & 25R

13-month period

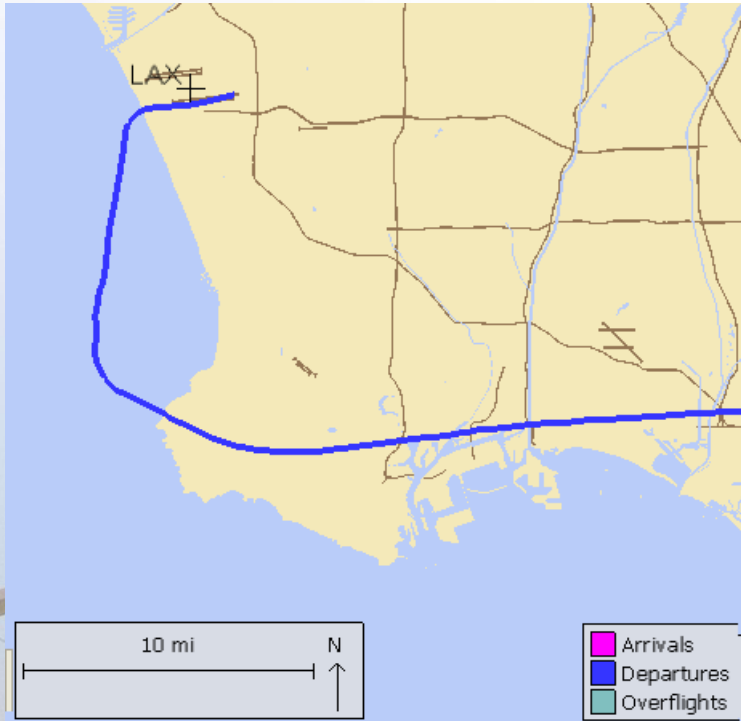


Cargo Departures on 25L & 25R by Operator September 2011

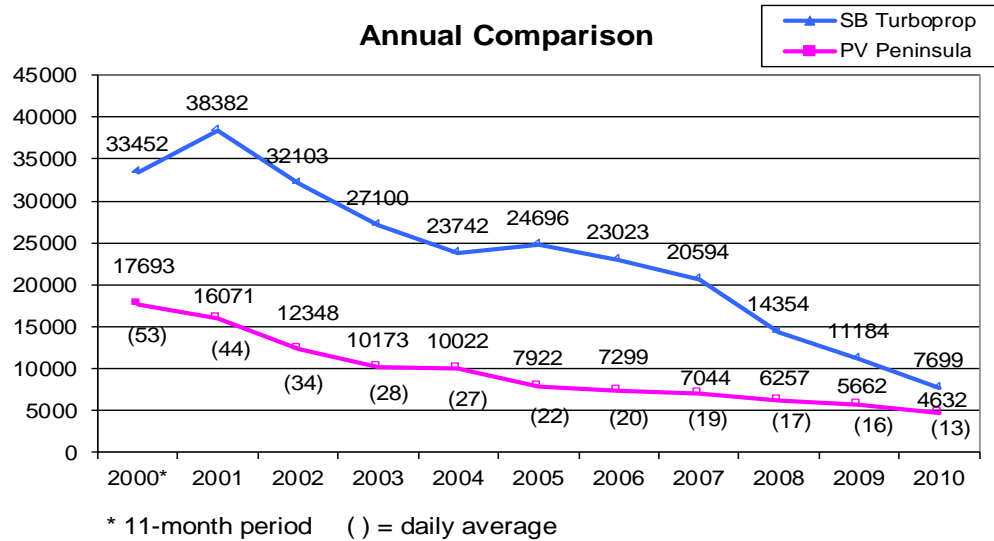


Palos Verdes Peninsula – Turboprop Overflights

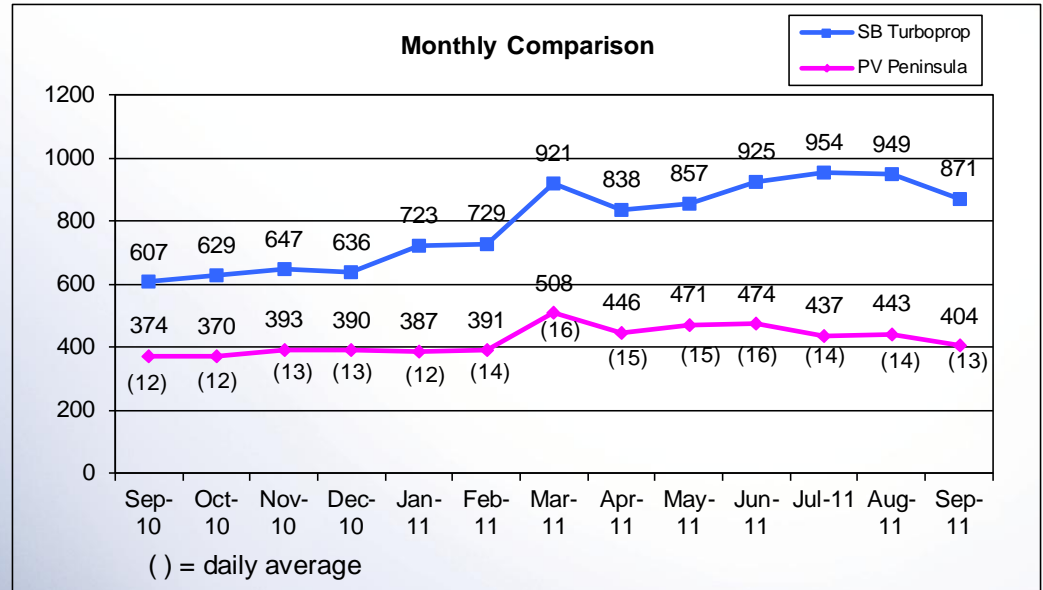
Monitoring southbound turboprops departing from LAX that overfly Peninsula



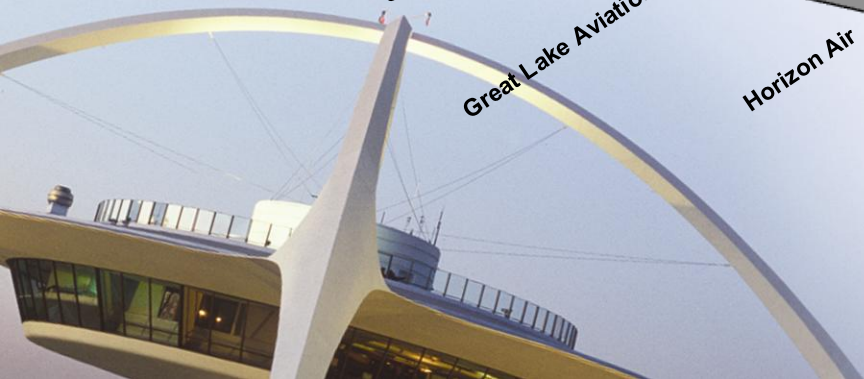
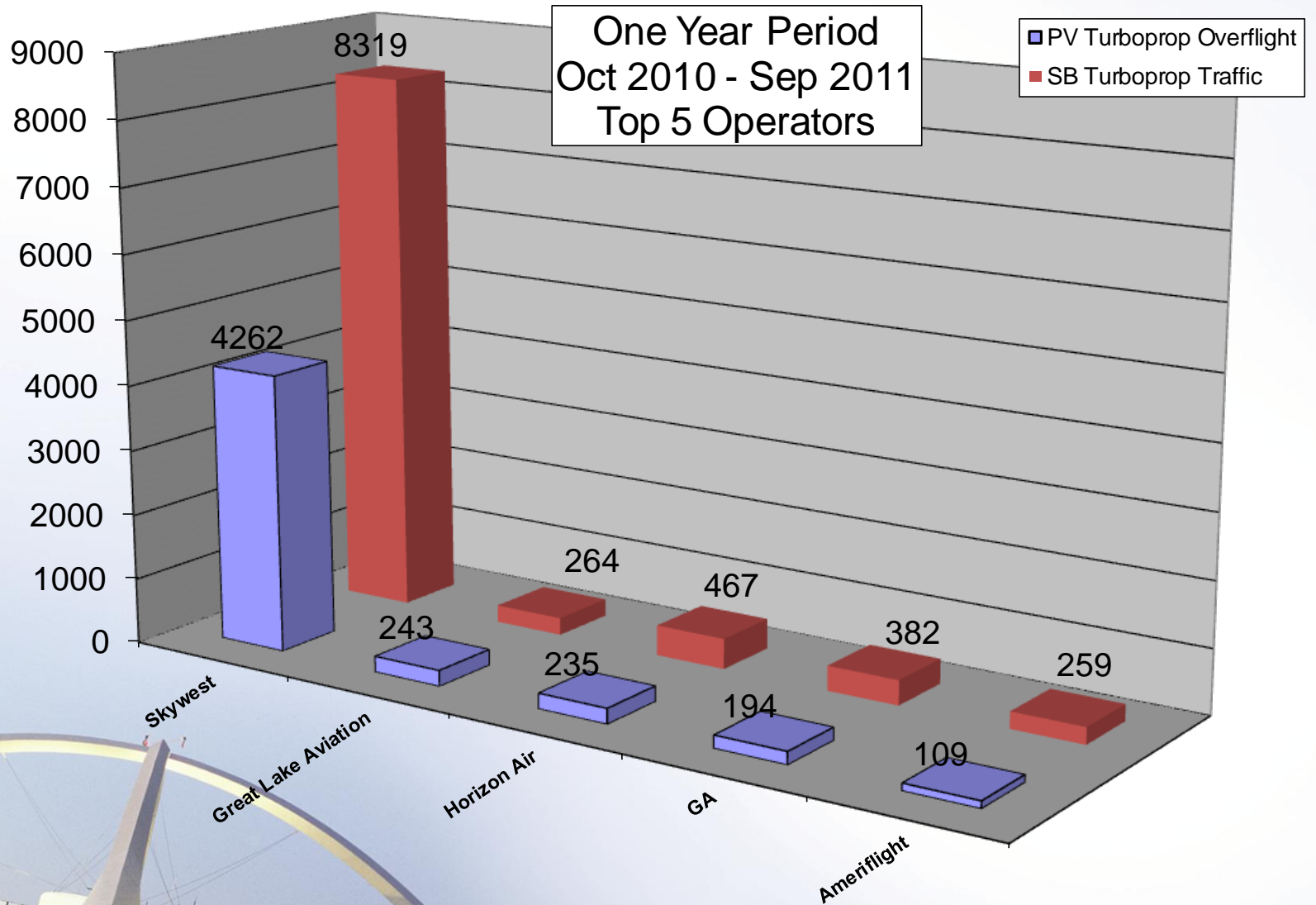
Annual Comparison



Monthly Comparison



Palos Verdes Peninsula – Turboprop Overflights



Palos Verdes Peninsula – Jet Overflights

Monitoring southbound jets departing from LAX that overfly Peninsula

