



# Statistical Update on LAX Aircraft Operations

November 10, 2010

LAX/Community Noise Roundtable



# Overview

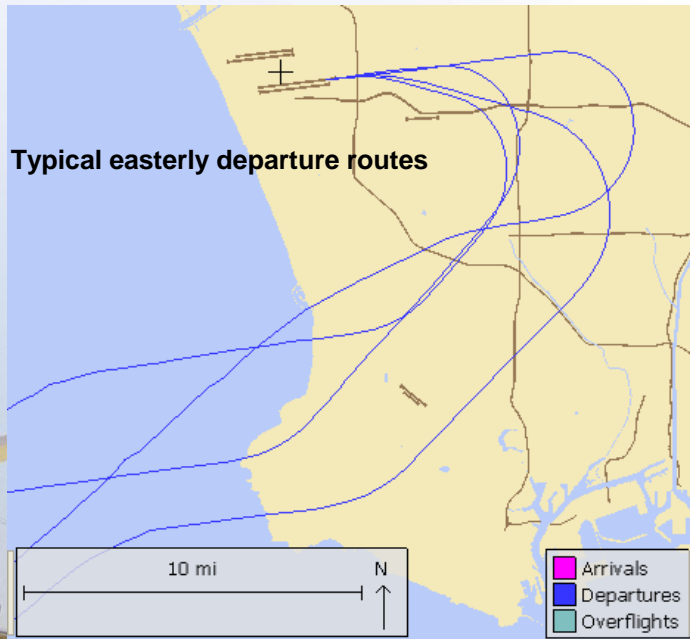
Statistical information on the following operations:

- *East Departures*
- *Early Turns*
- *Go-arounds*
- *Short Turns*
- *Palos Verdes Overflights*
- Extended Downwind Approaches
- Loop Departures
- 25L Departures

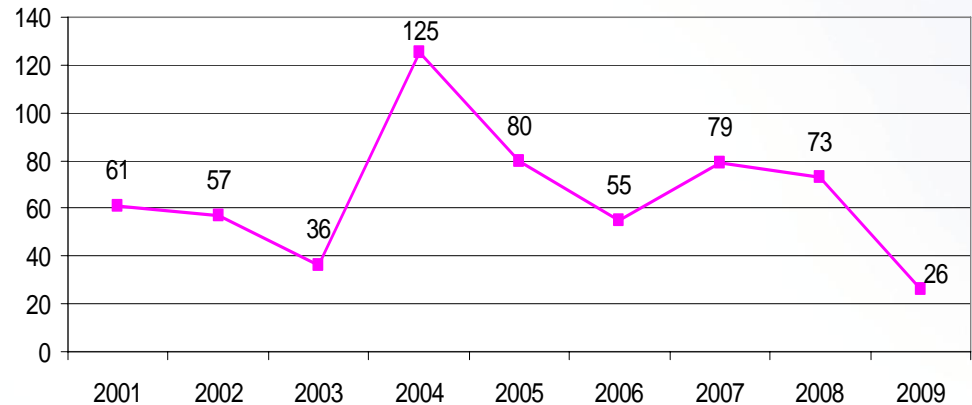


# Non-Conforming East Departures Midnight to 6:30 AM

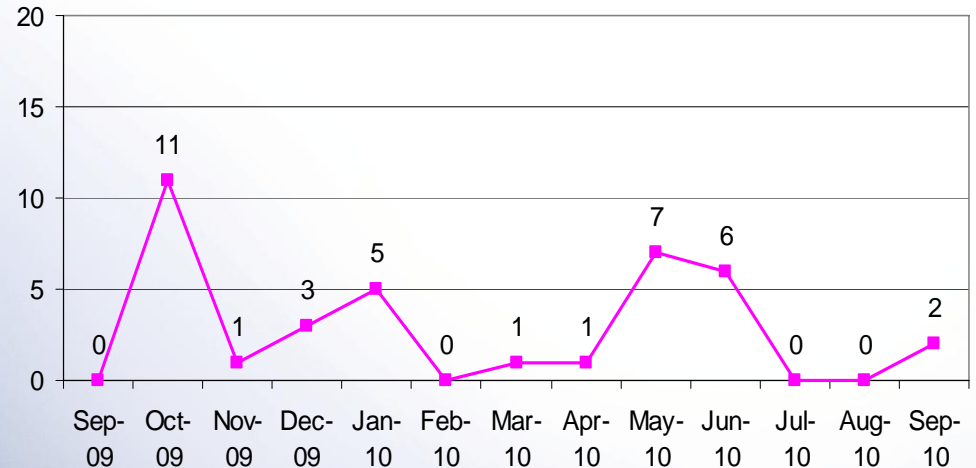
This report shows a summary of aircraft operations that depart to the east while the airport is still conducting westerly departures between midnight and 6:30 a.m. These individual easterly departures usually occur when the pilot of a heavy aircraft (e.g. B747s) determines that the tail wind is too great for the weight of the aircraft and requests to depart east into the wind for aircraft safety.



**Annual Comparison**

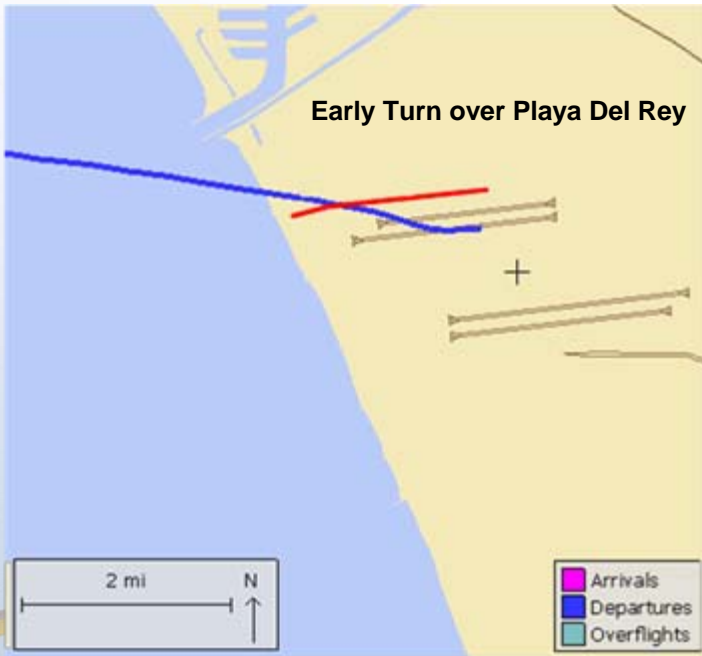


**Monthly Comparison**

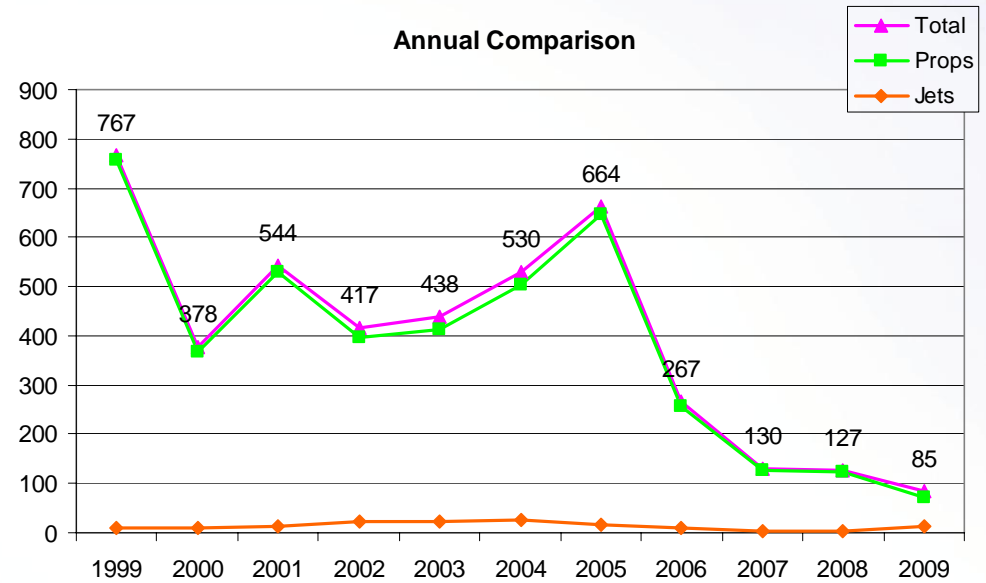


# Early Turn to the North

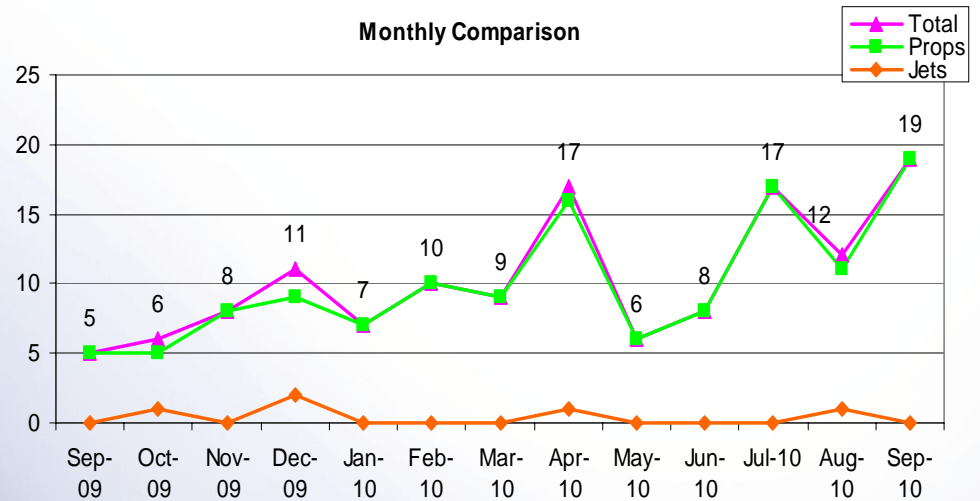
Aircraft departing to the ocean turn early prior to reaching the shoreline



Annual Comparison

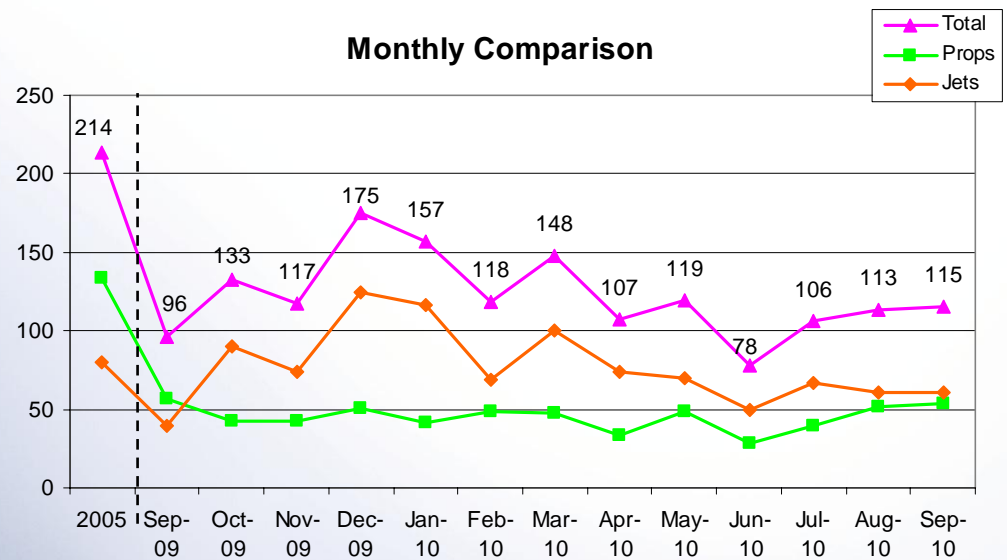
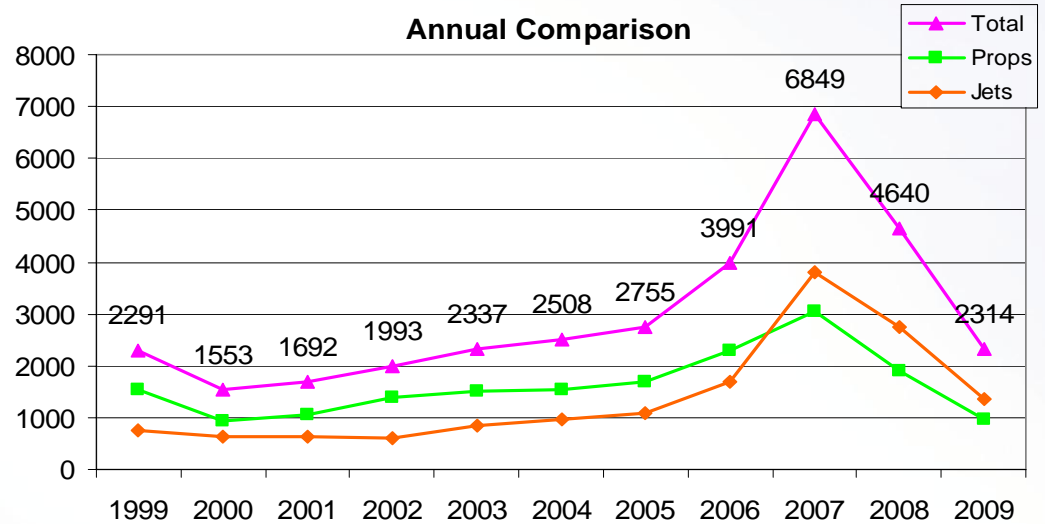
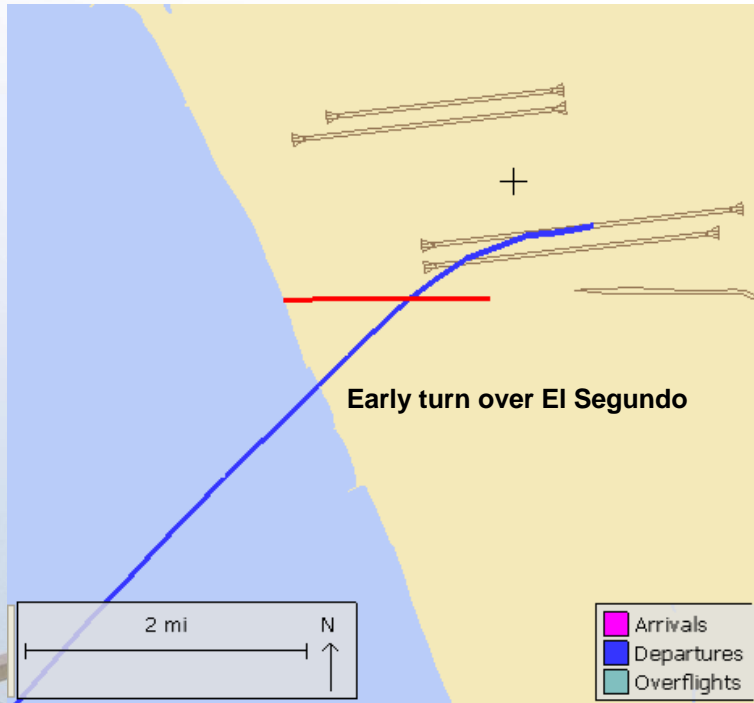


Monthly Comparison



# Early Turn to the South

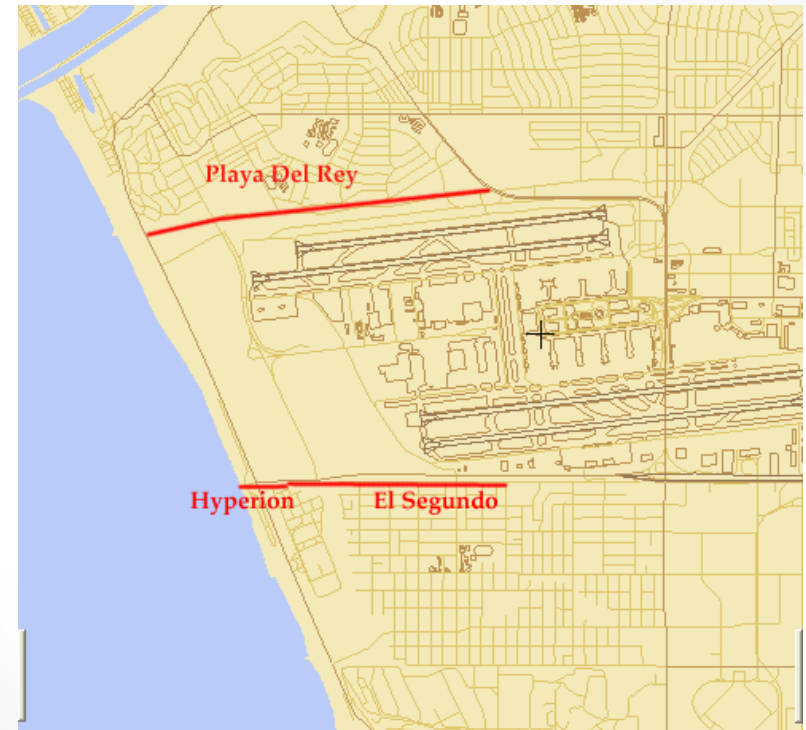
Aircraft departing to the ocean turn early prior to reaching the shoreline



# Early Turns Breakdown

## September 2010

<b>Total Early Turn Ops</b>	<b>134</b>
<b>Hyperion Gate</b>	<b>90</b>
<b>El Segundo Gate</b>	<b>25</b>
<b>Playa Del Rey Gate</b>	<b>19</b>



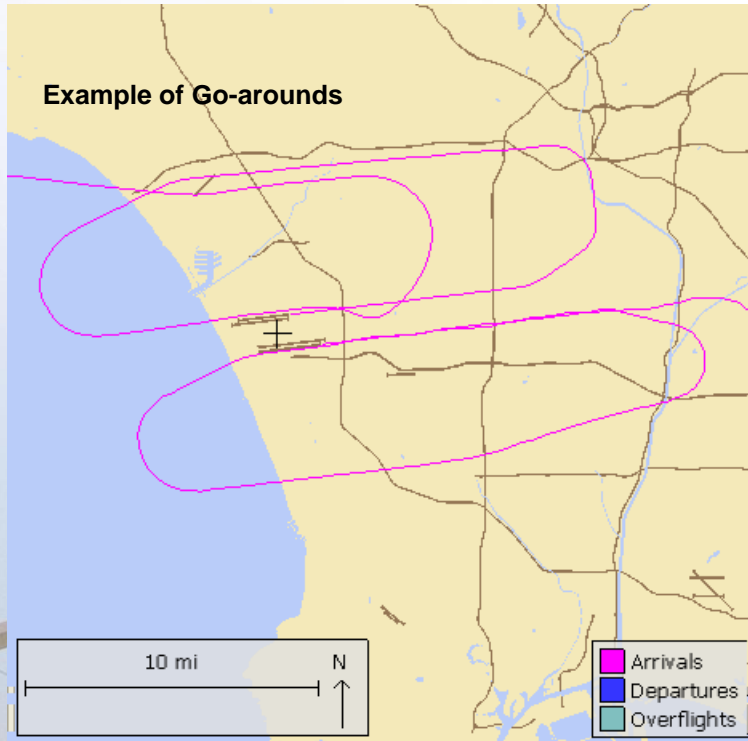
### Result of Investigation

<b>Total</b>	<b>44</b>
<b>FAA instructed</b>	<b>33</b>
<b>Pilot initiated</b>	<b>8</b>
<b>Wind drift</b>	<b>2</b>
<b>Unknown</b>	<b>1</b>

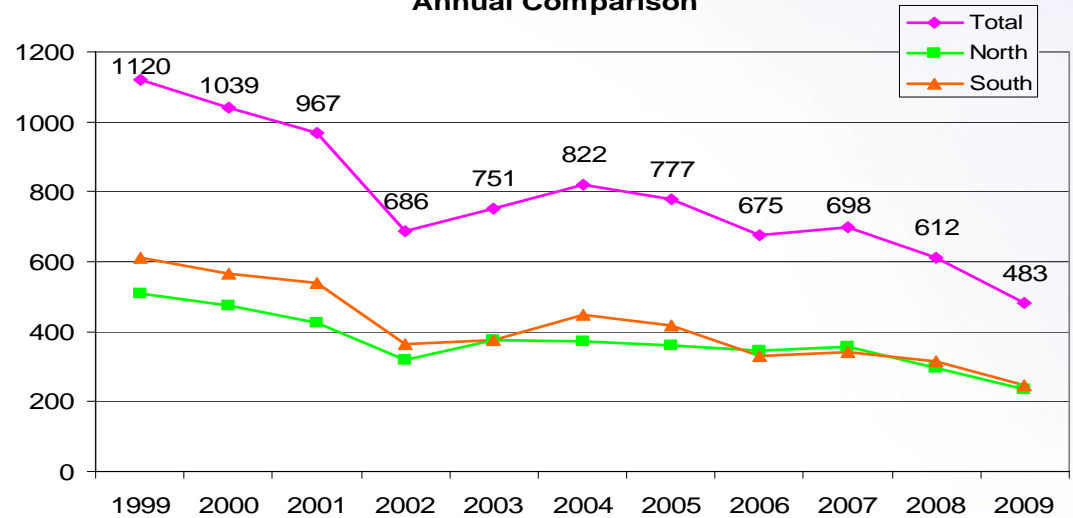


# Go-Arounds

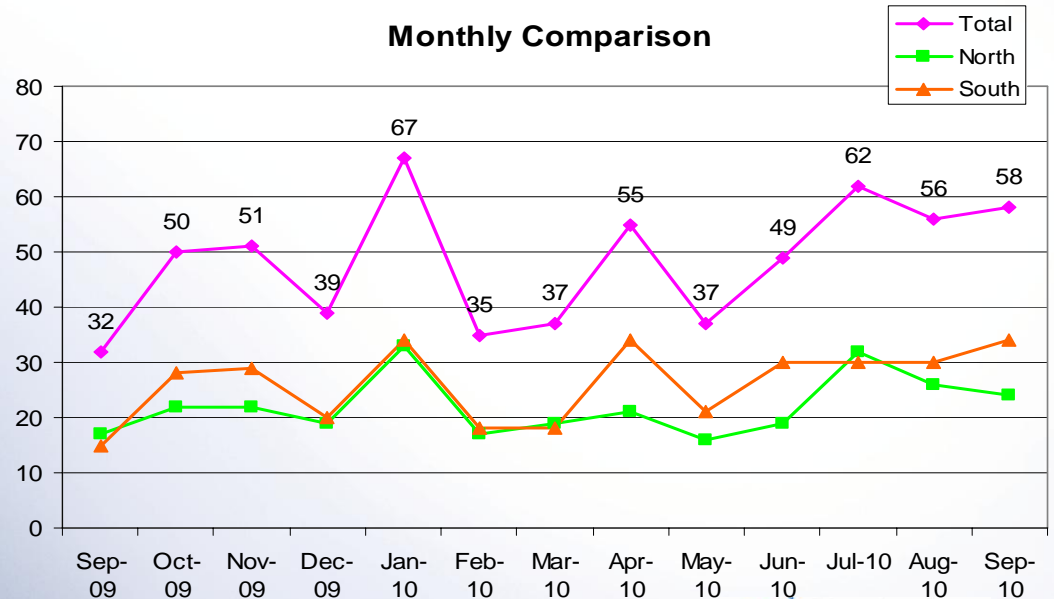
Monitoring pilot or ATC initiated go-arounds or missed approaches



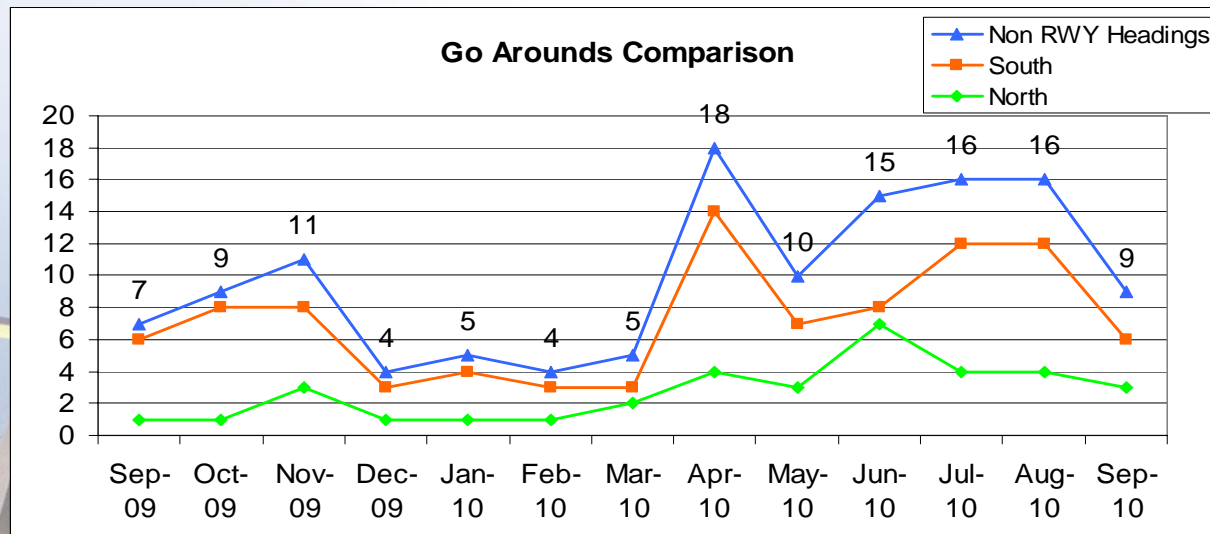
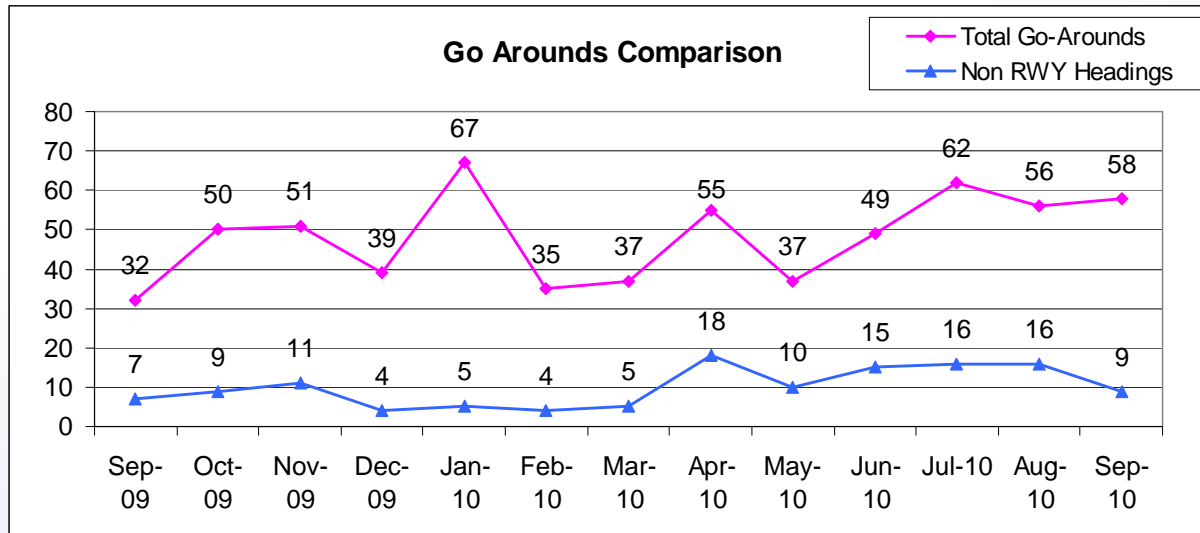
**Annual Comparison**



**Monthly Comparison**



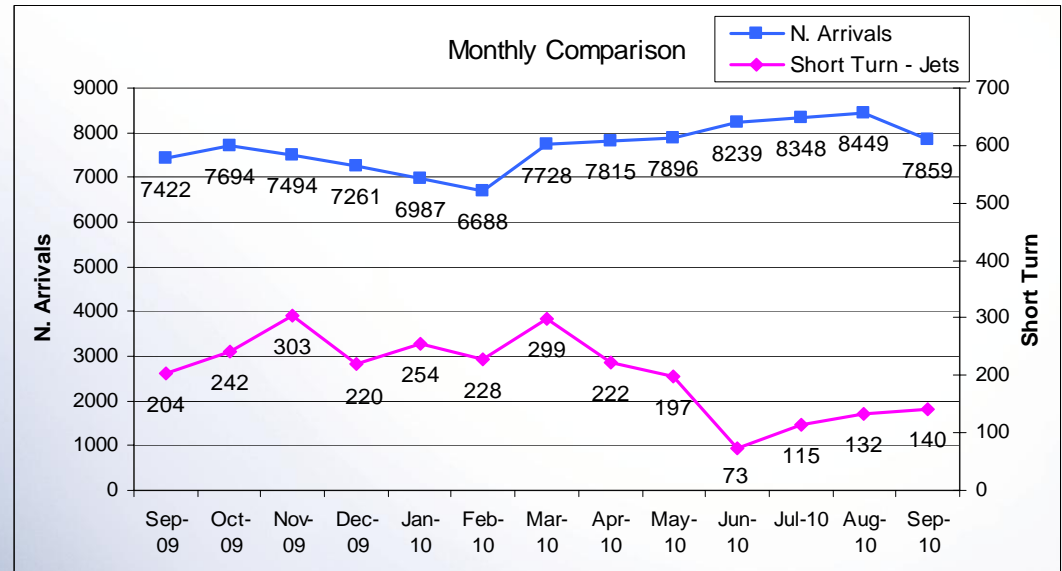
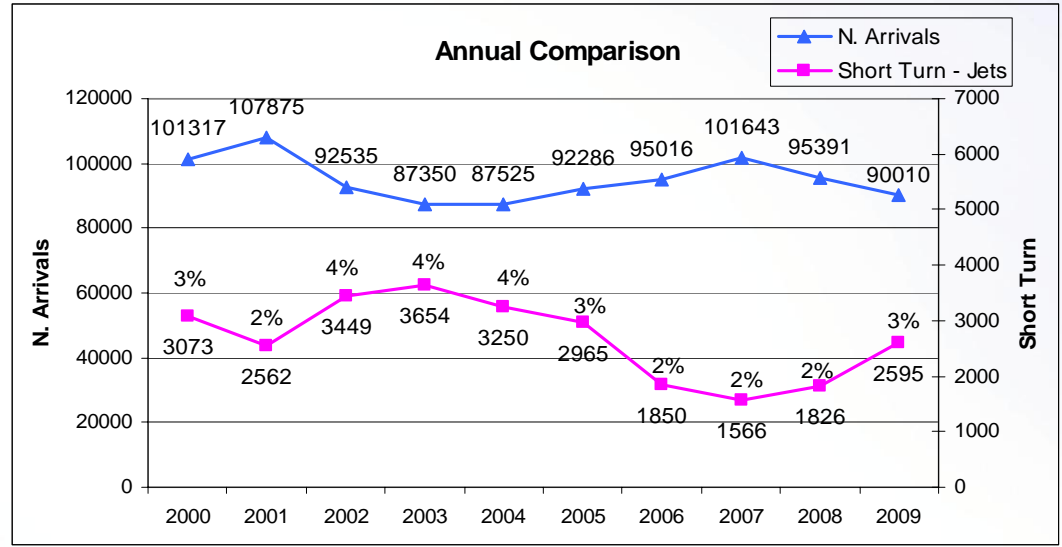
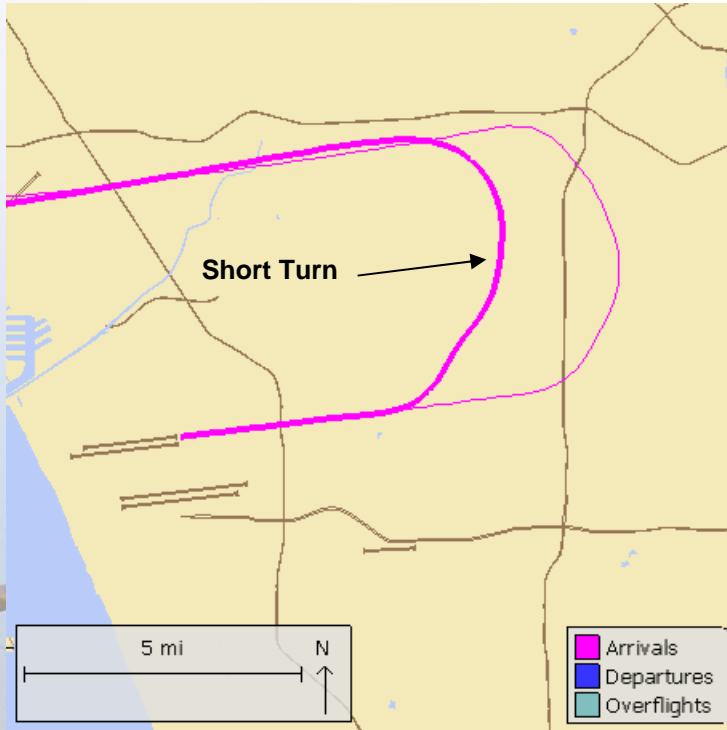
# Go-Arounds – Not Maintaining RWY Headings



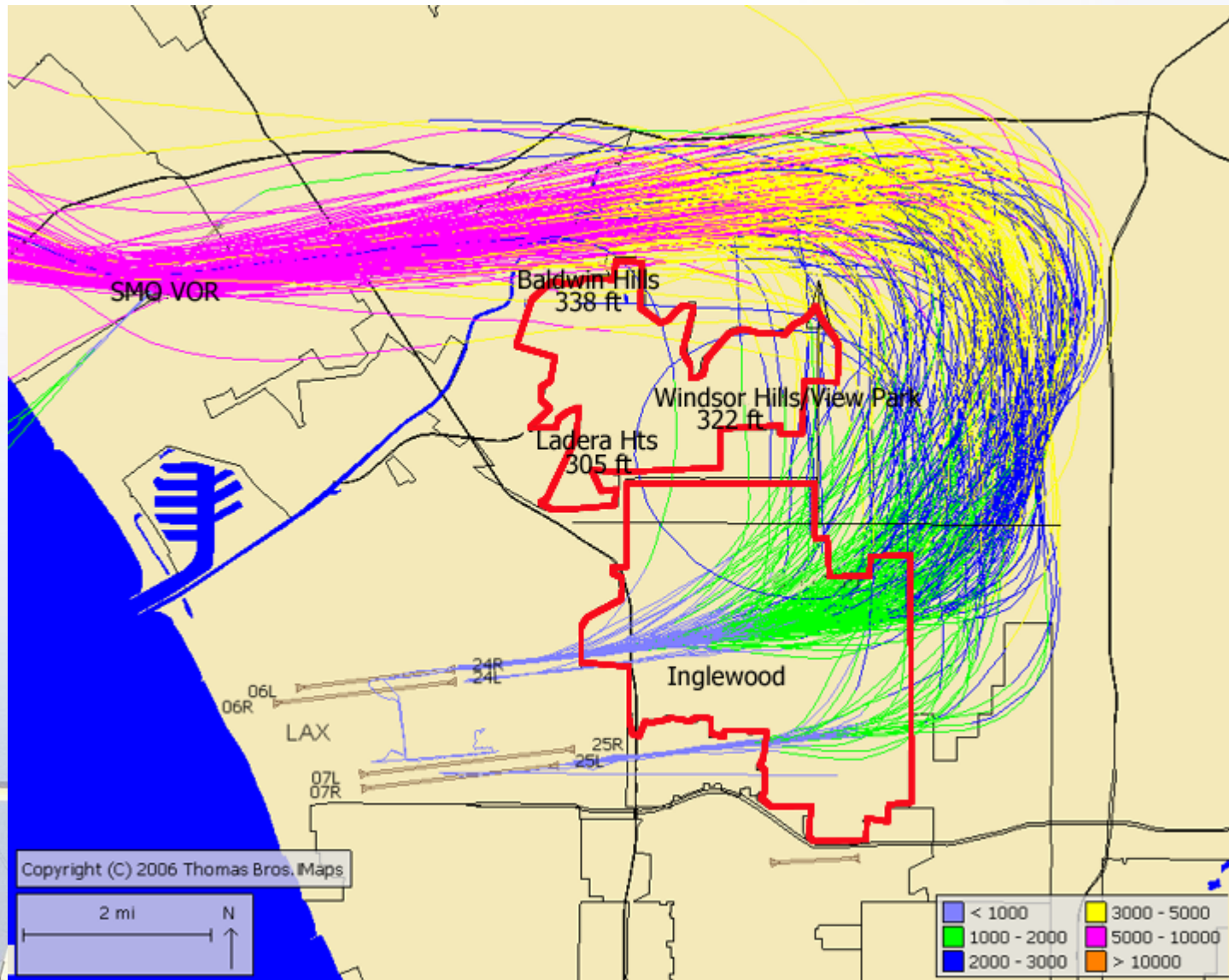


# Short Turn Arrivals

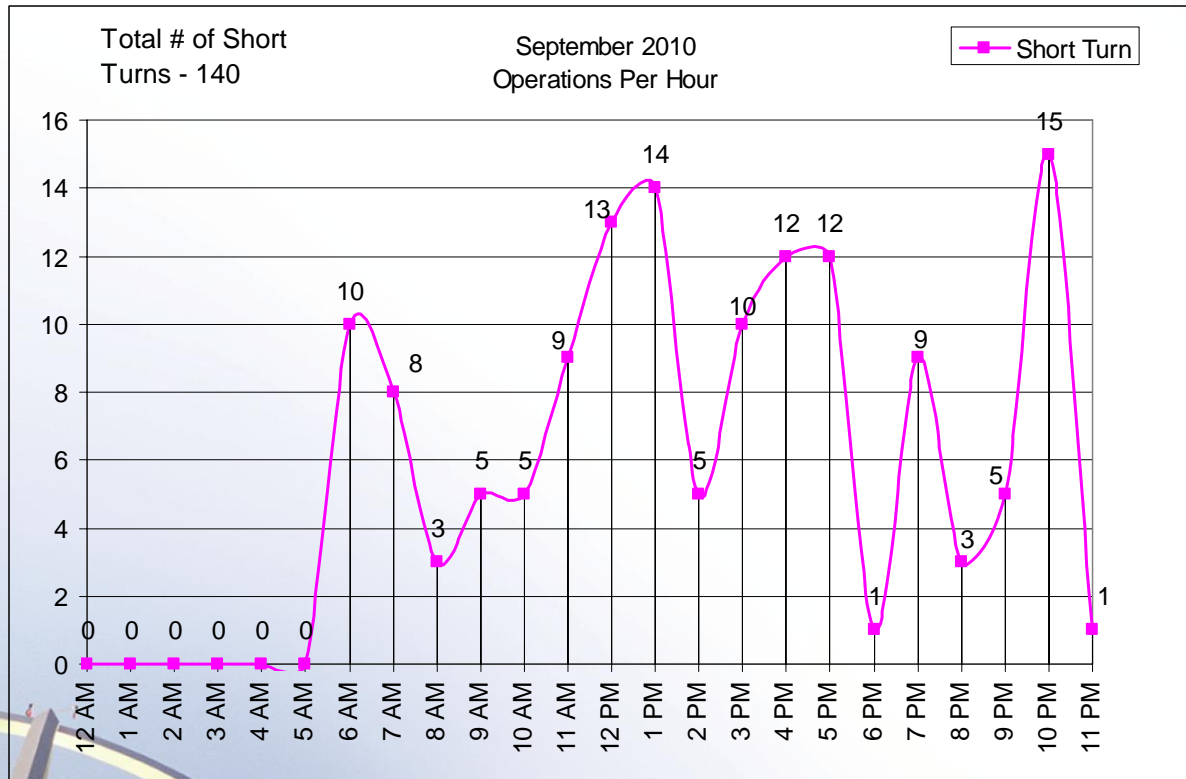
Arriving jet aircraft turning early prior to reaching the Harbor Freeway to land at LAX



# Short Turn Arrival Flight Tracks - One Month

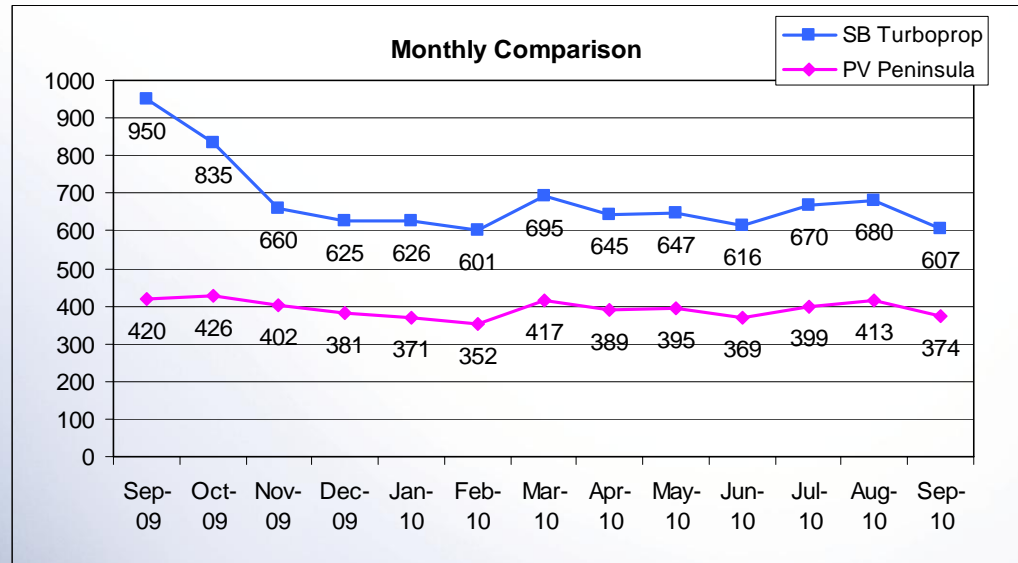
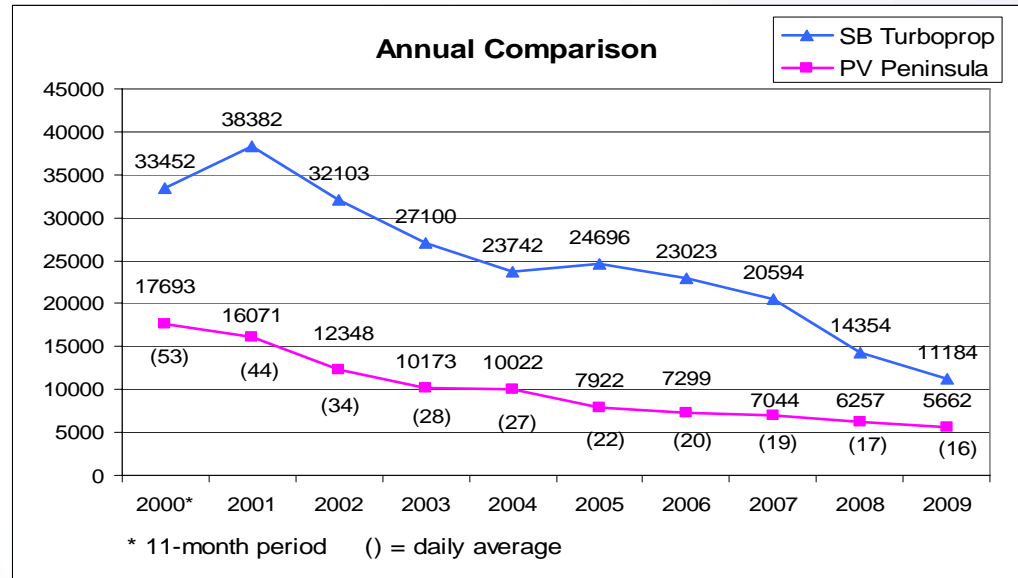
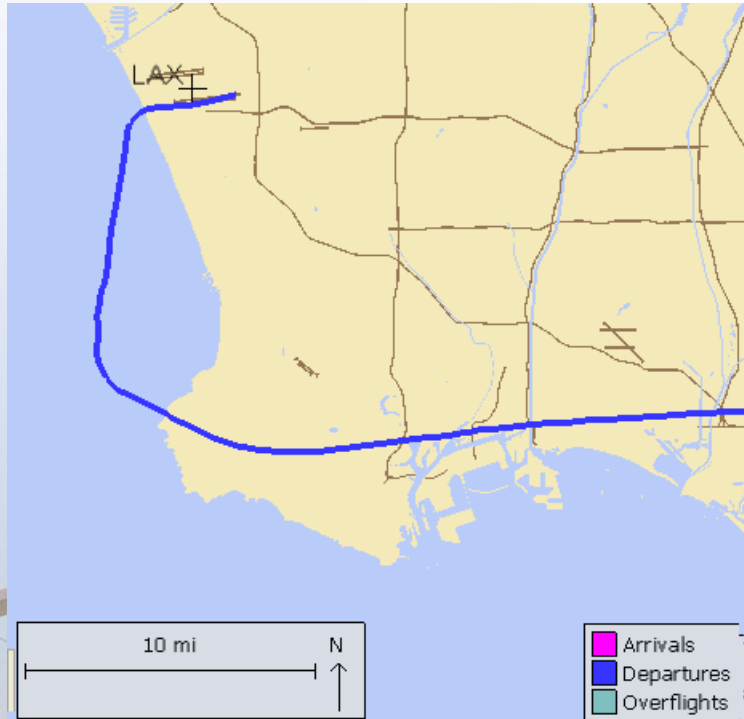


# Time of Day – Short Turn September 2010

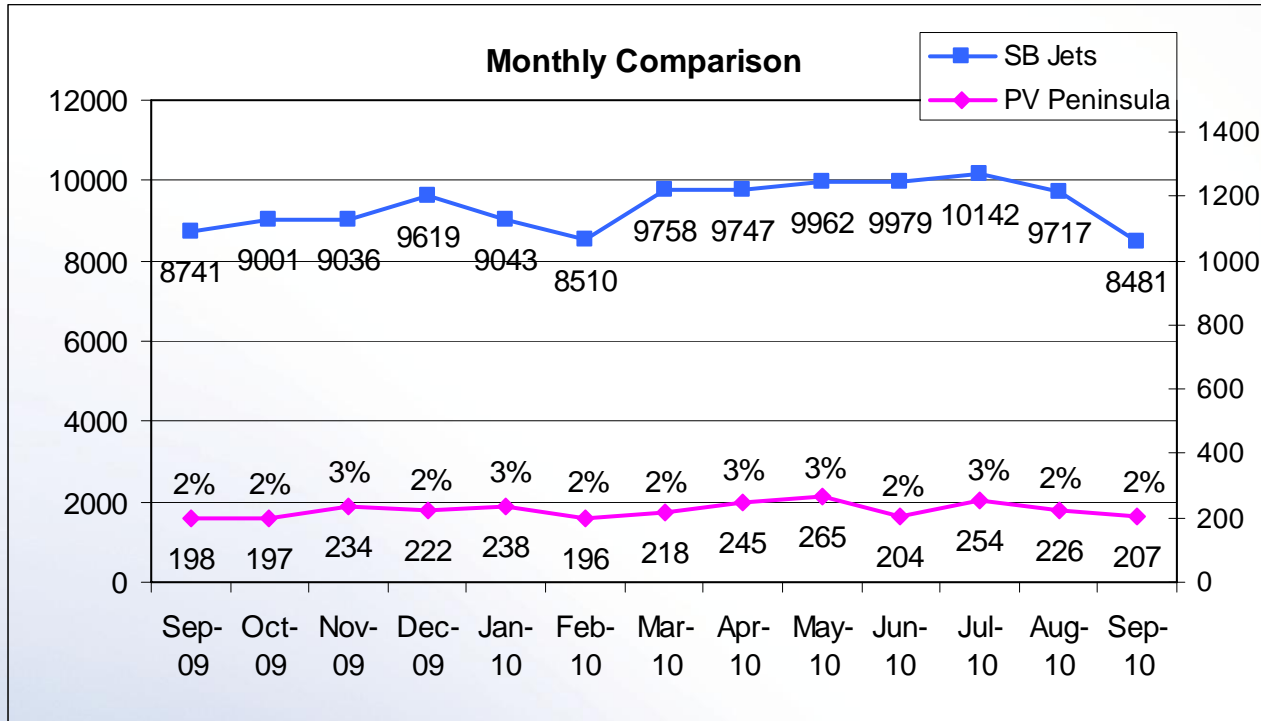


# Palos Verdes Peninsula – Turboprop Overflights

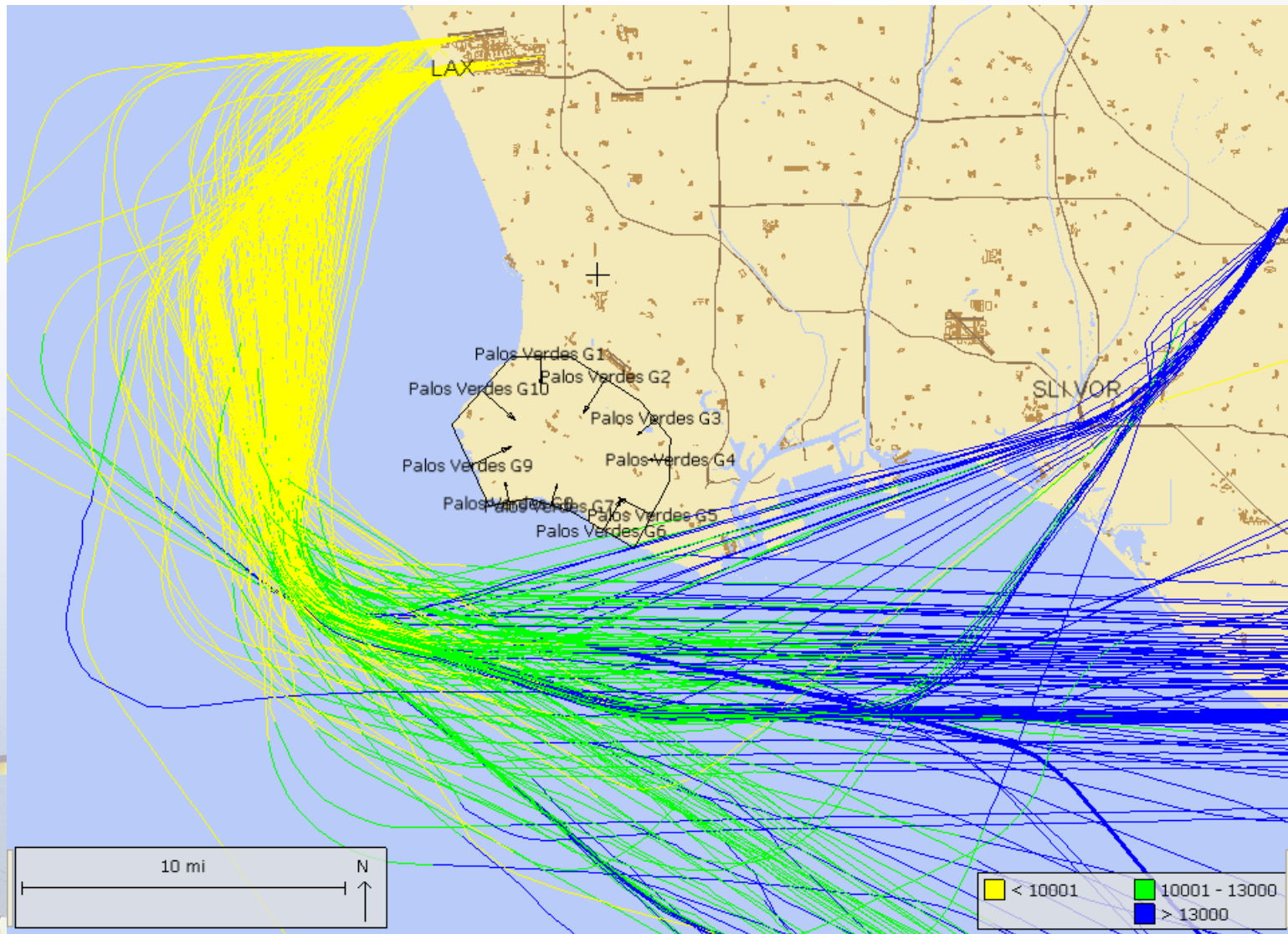
Monitoring southbound turboprops departing from LAX that overfly Peninsula



# Palos Verdes Peninsula – Jet Overflights

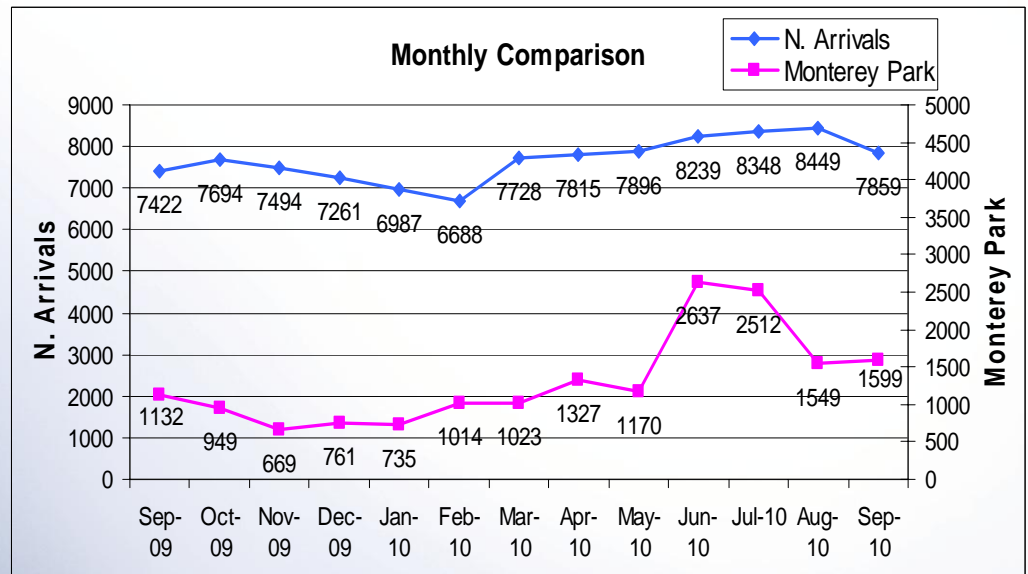
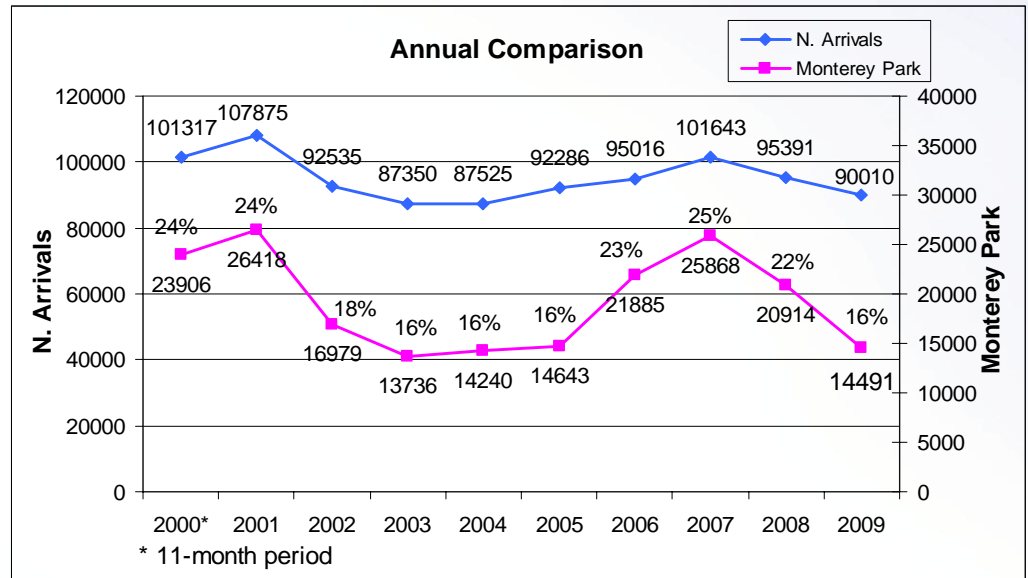
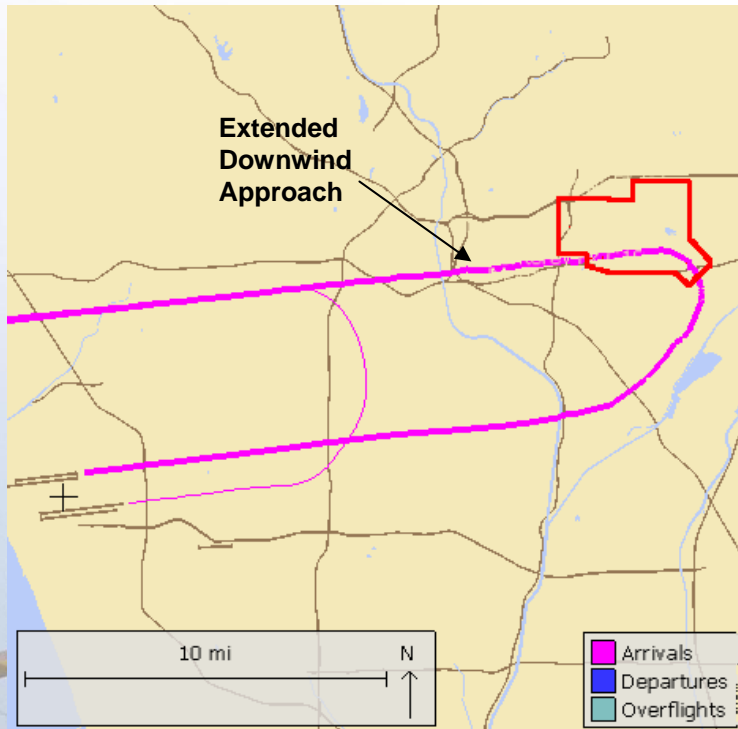


# PV Jet Flight Tracks - One Day 9/25/2010



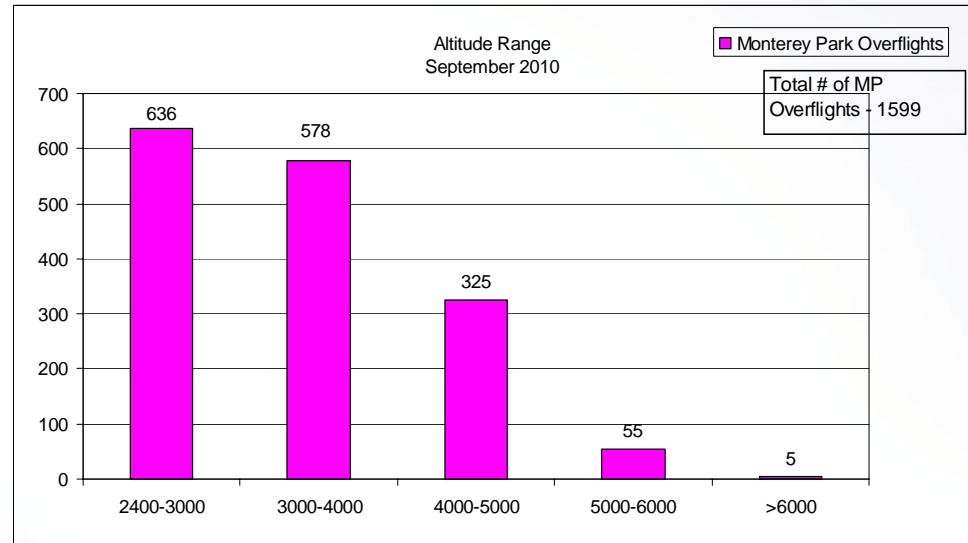
# Extended Downwind Approach

Monitoring north arrivals extending downwind over Monterey Park boundary

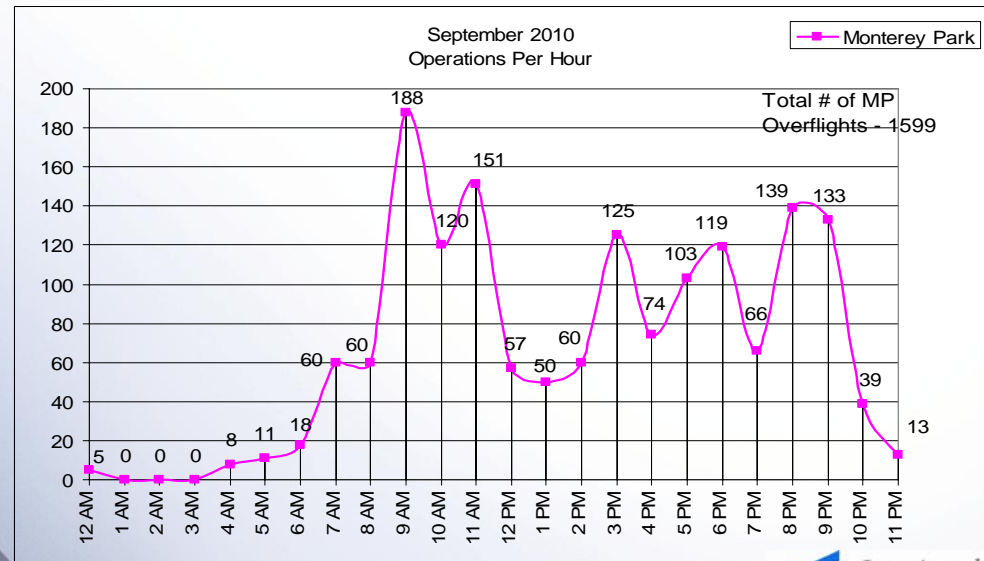


# Extended Downwind Approach September 2010

Altitude over  
Monterey Park



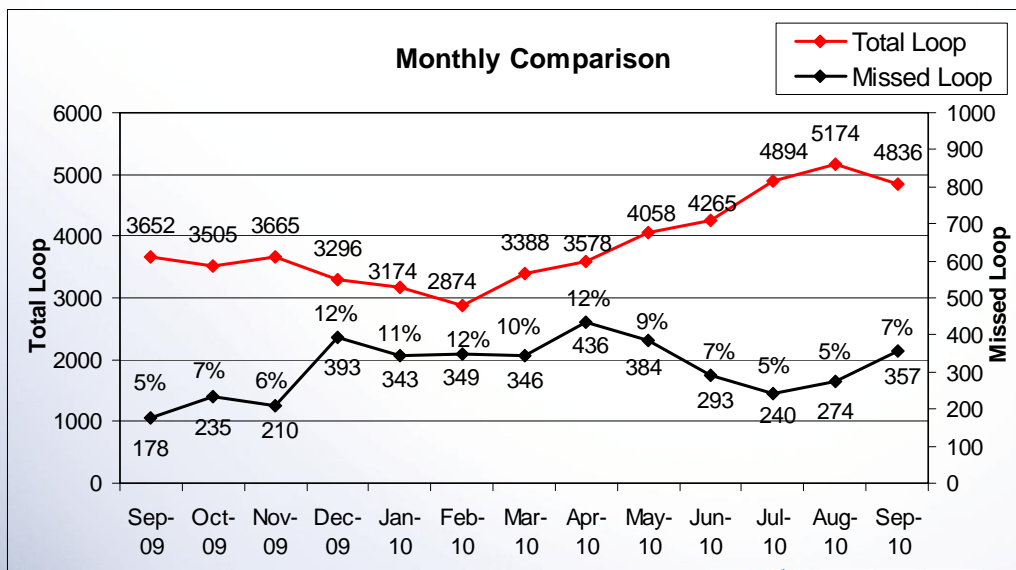
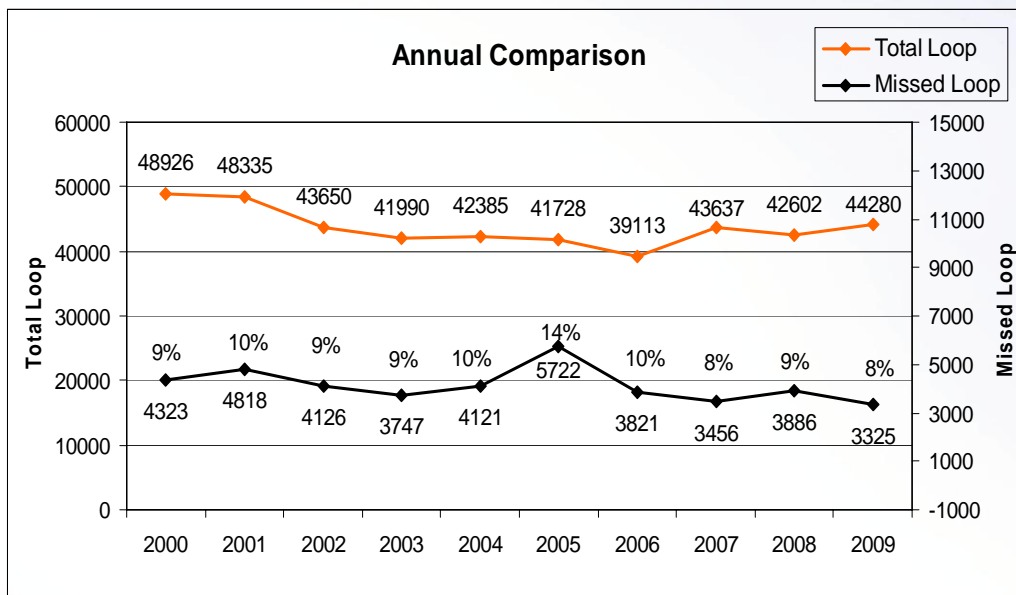
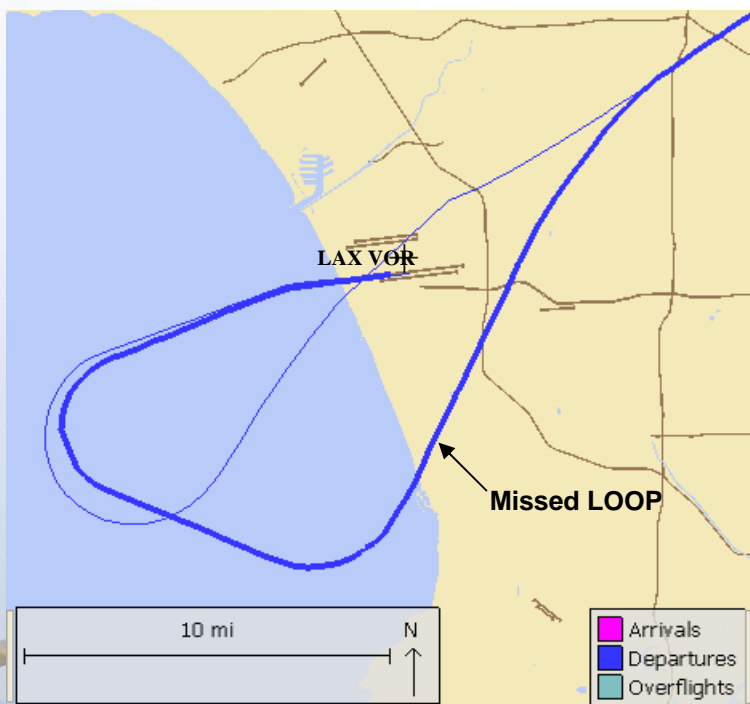
Number of  
Operations By  
Time of Day





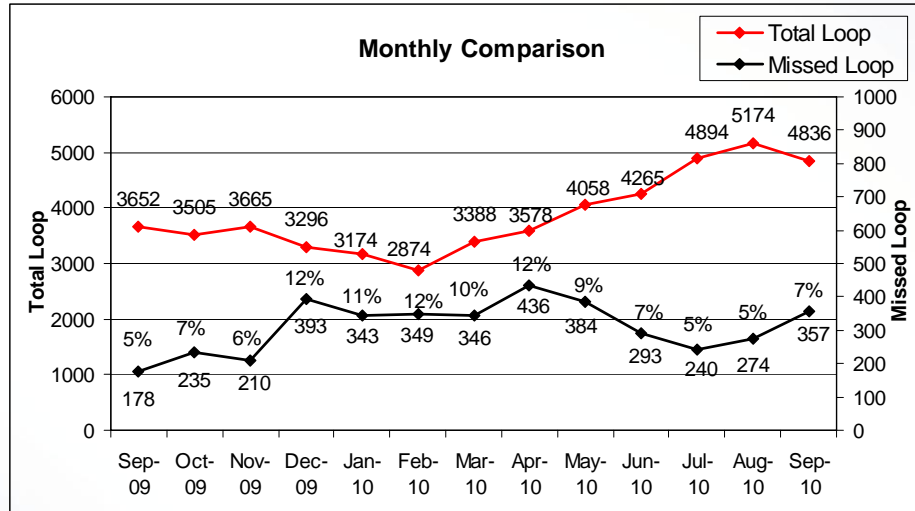
# Missed LAX Loop Departure

Monitoring loop departures overflying communities

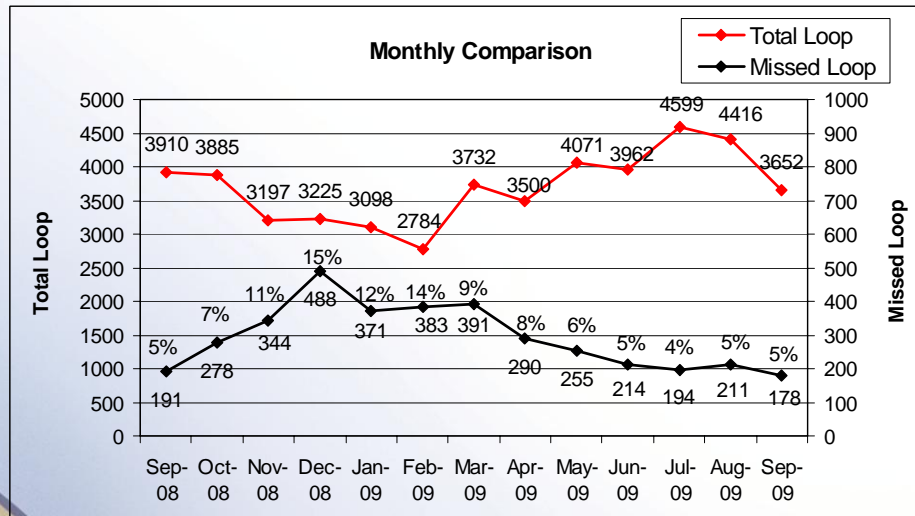


# Missed LAX Loop Departure

Current  
Year



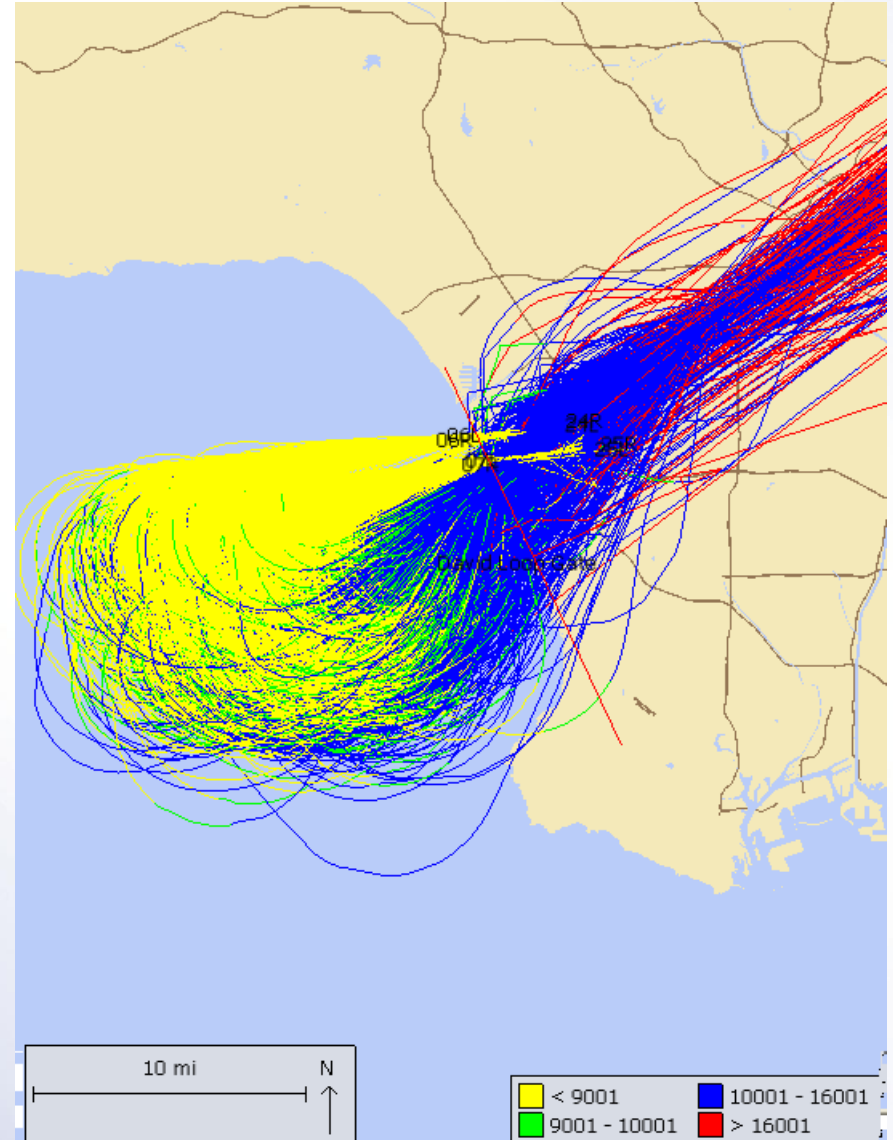
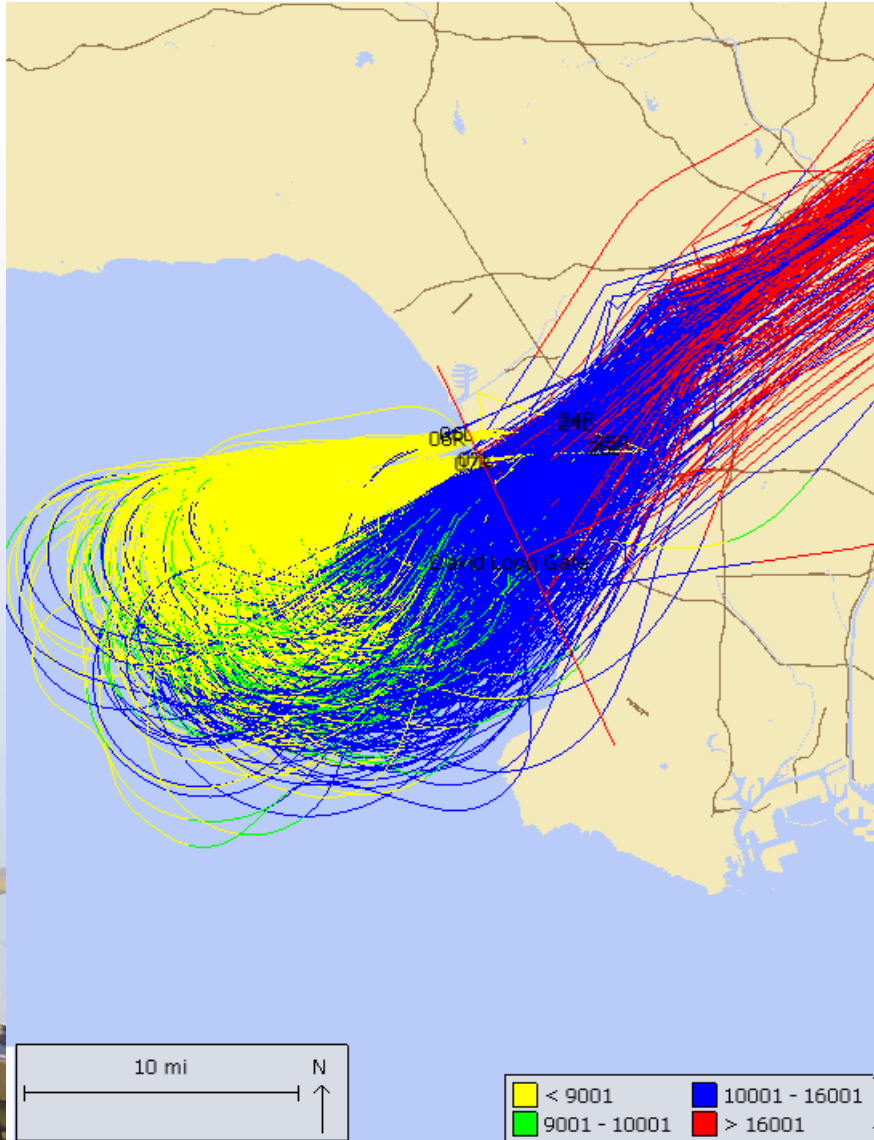
Previous  
Year



# LOOP - Altitude Information

December 09

July 10



# Departures – South Runways (25L and 25R) 13-month period

