



# Statistical Update on LAX Aircraft In-Flight Procedures

November 18, 2009

LAX/Community Noise Roundtable

# Overview

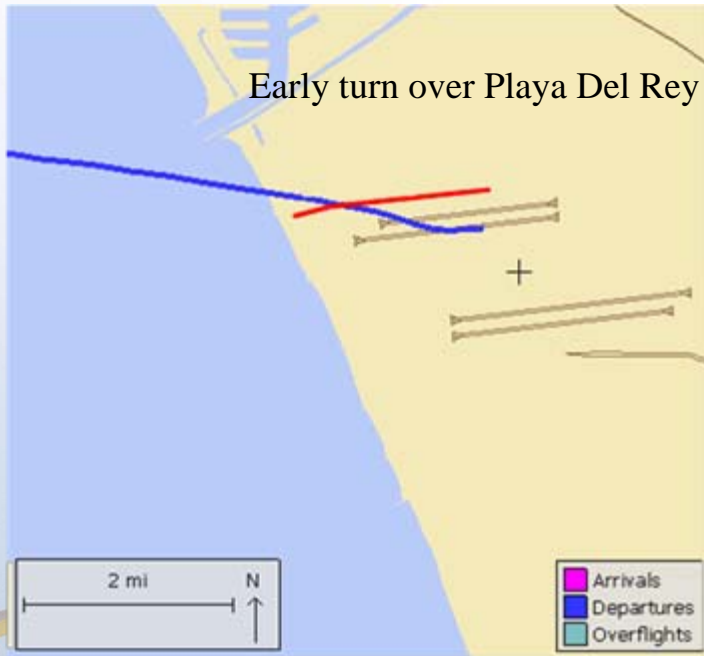
Statistical information on the following operations:

- Early Turns
- Loop Departures
- East Departures
- Palos Verdes Overflights
- Short Turns
- Extended Downwind Approach
- Go-arounds

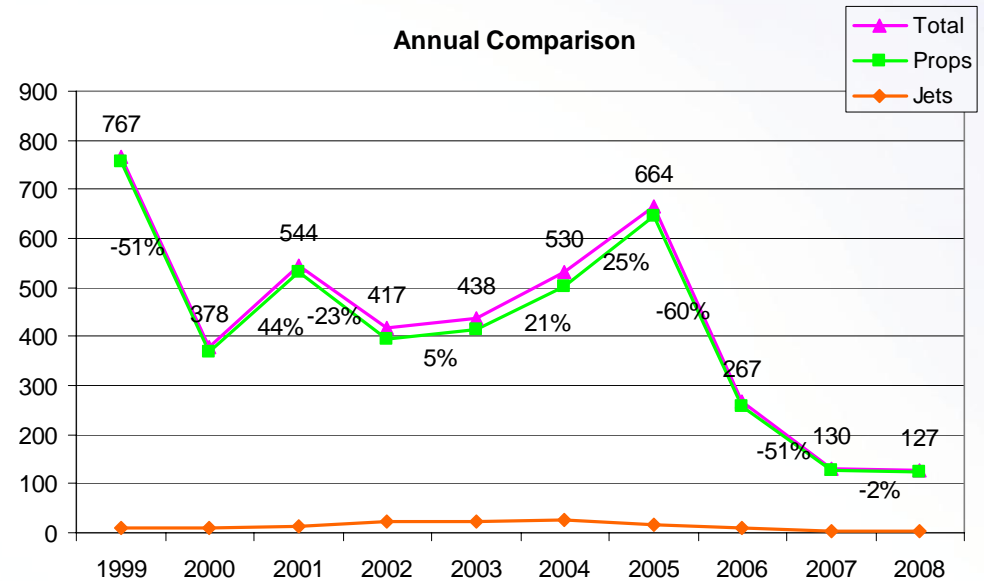


# Early Turn to the North

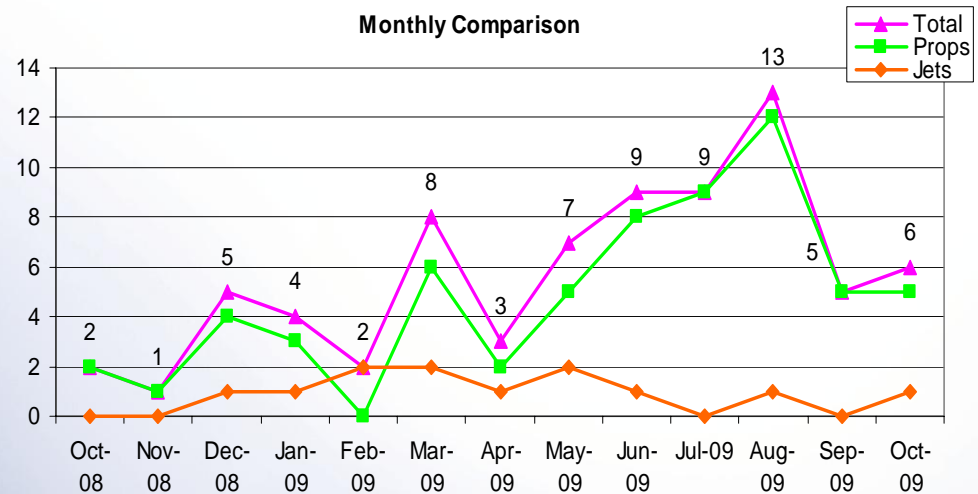
Aircraft departing to the ocean turn early prior to reaching the shoreline



Annual Comparison

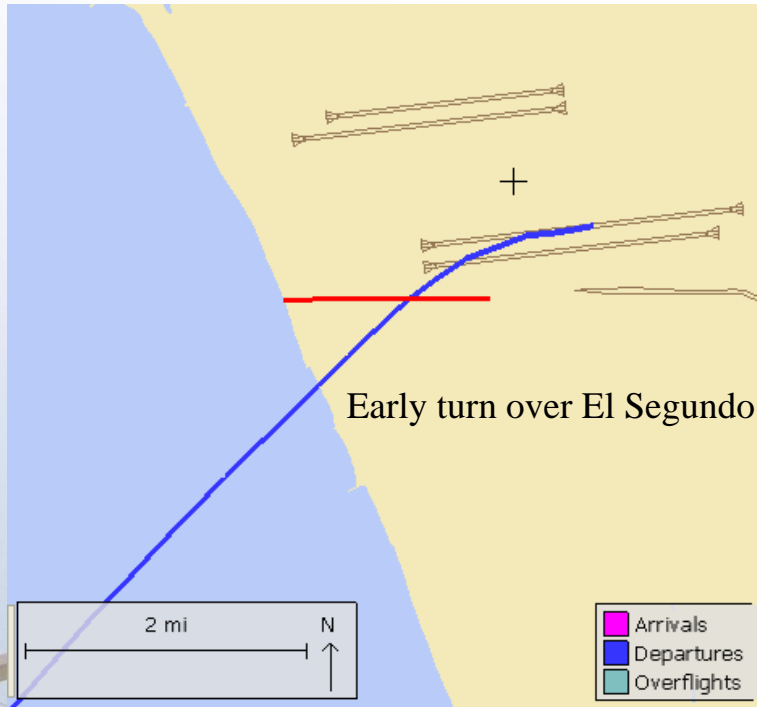


Monthly Comparison

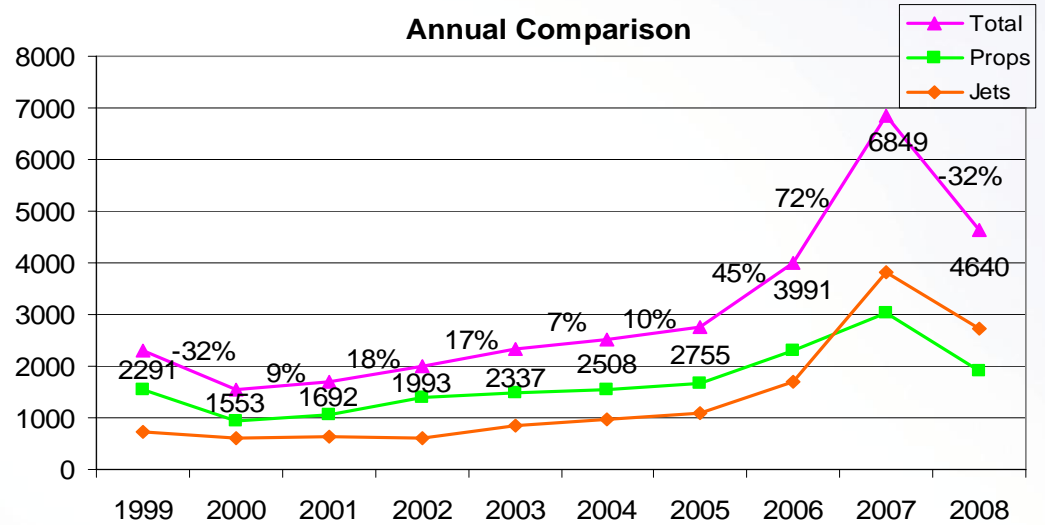


# Early Turn to the South

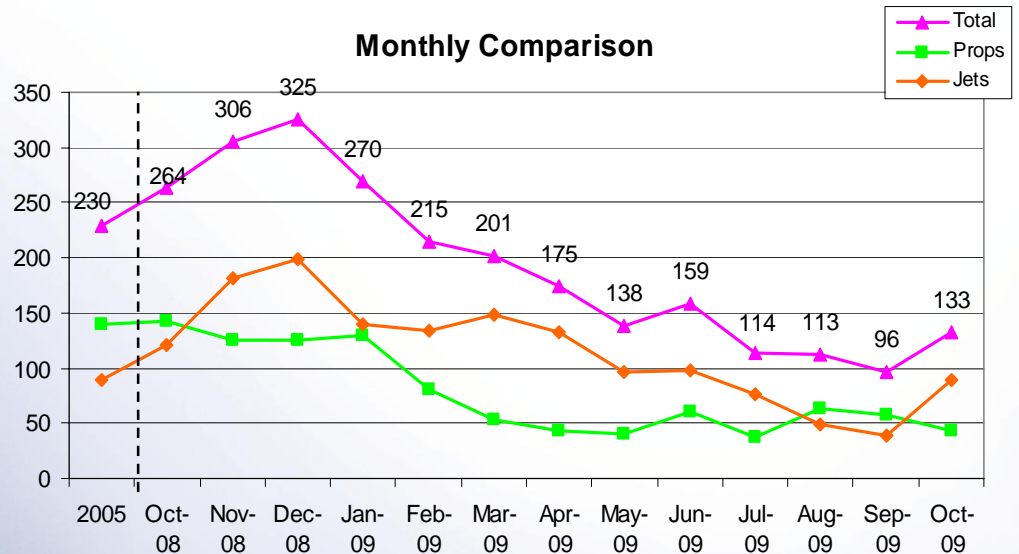
Aircraft departing to the ocean turn early prior to reaching the shoreline



### Annual Comparison



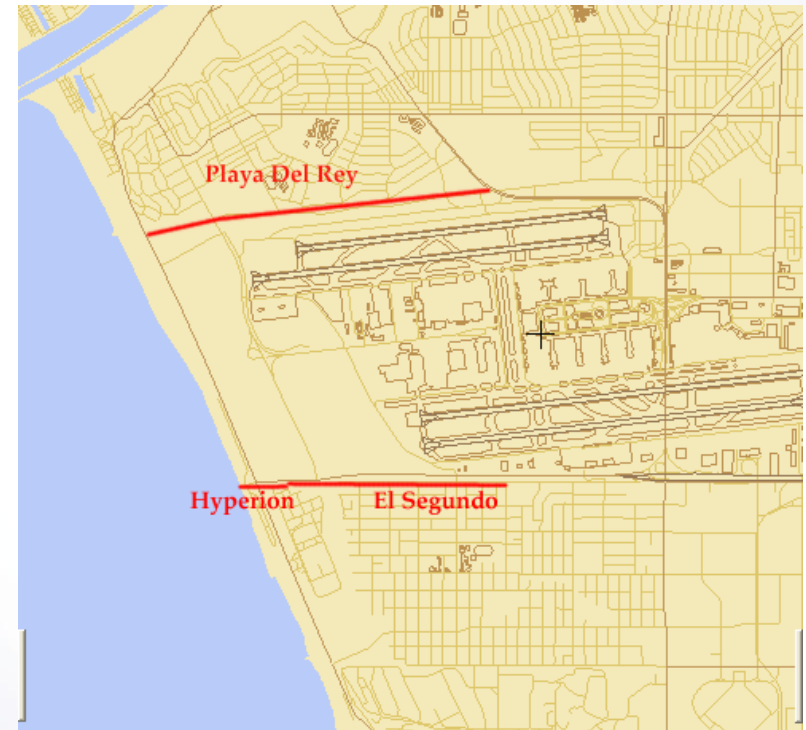
### Monthly Comparison



# Early Turns Breakdown

## October 2009

<b>Total Early Turn Ops</b>	<b>139</b>
<b>Hyperion Gate</b>	<b>118</b>
<b>El Segundo Gate</b>	<b>15</b>
<b>Playa Del Rey Gate</b>	<b>6</b>



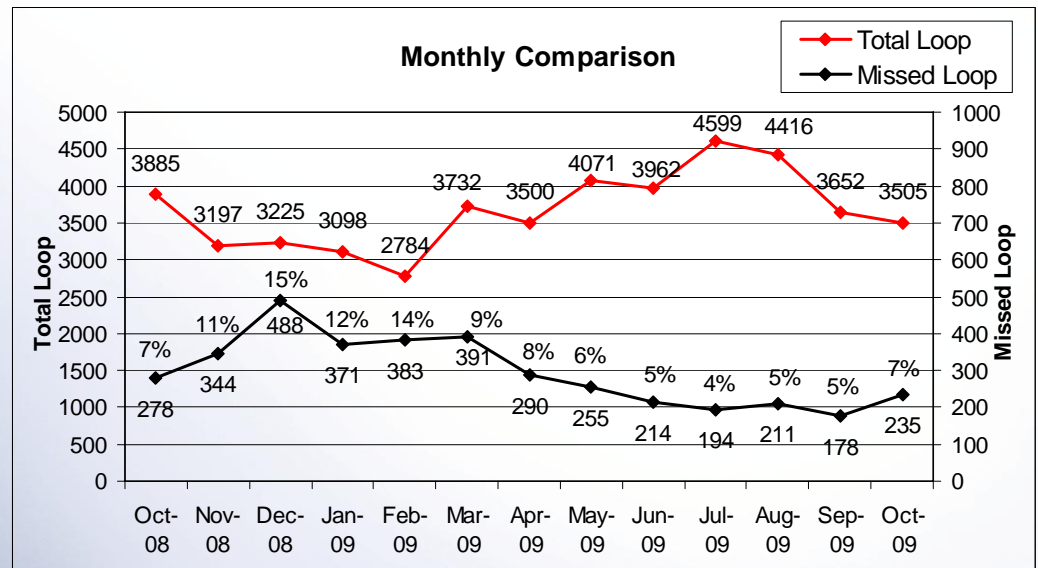
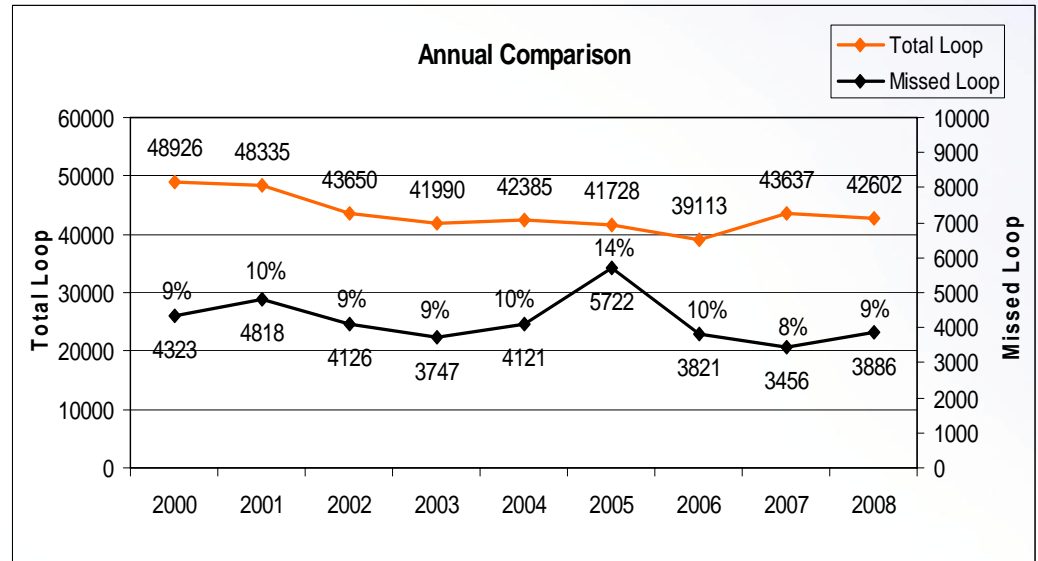
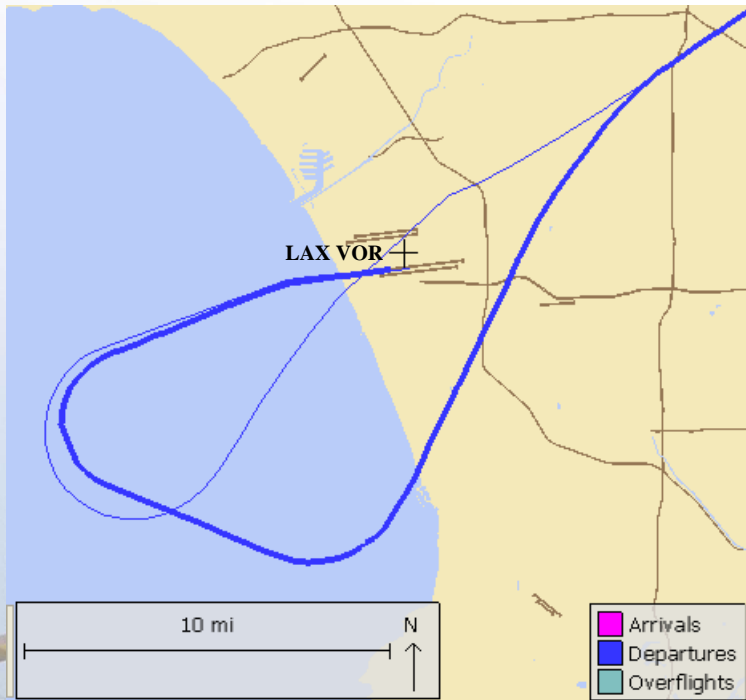
### Result of Investigation

<b>Total</b>	<b>21</b>
<b>FAA instructed</b>	<b>12</b>
<b>Pilot initiated</b>	<b>7</b>
<b>Wind drift</b>	<b>2</b>



# Missed LAX Loop Departure

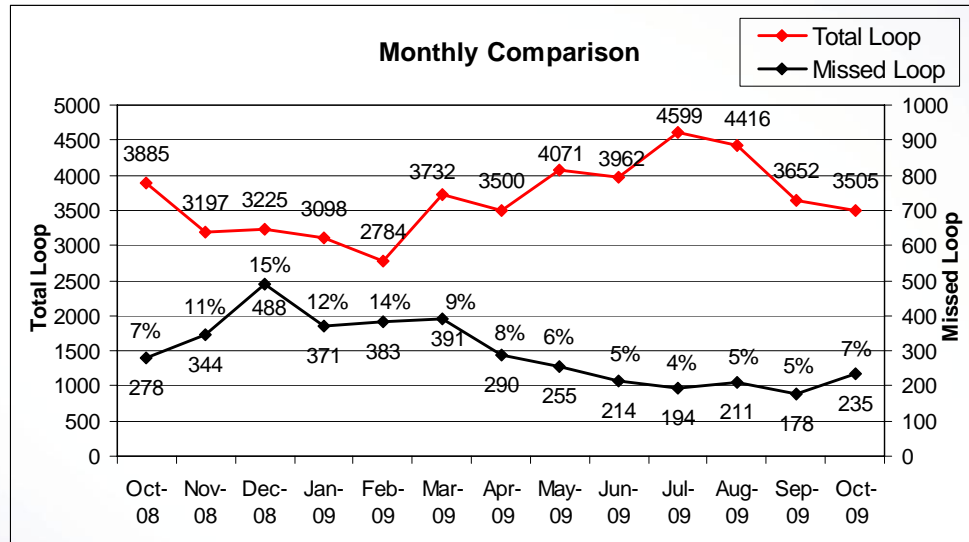
Monitoring loop departures  
overflying communities



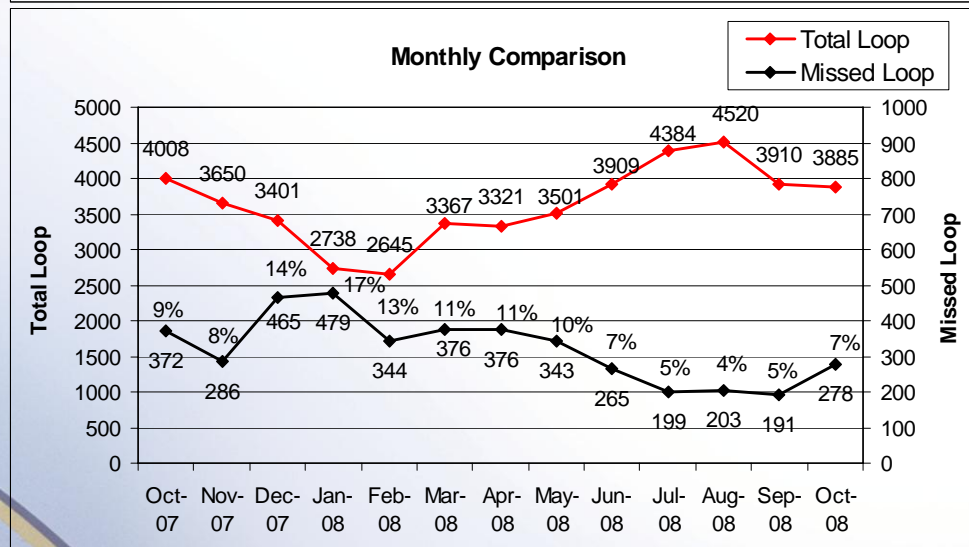


# Missed LAX Loop Departure

Current  
Year

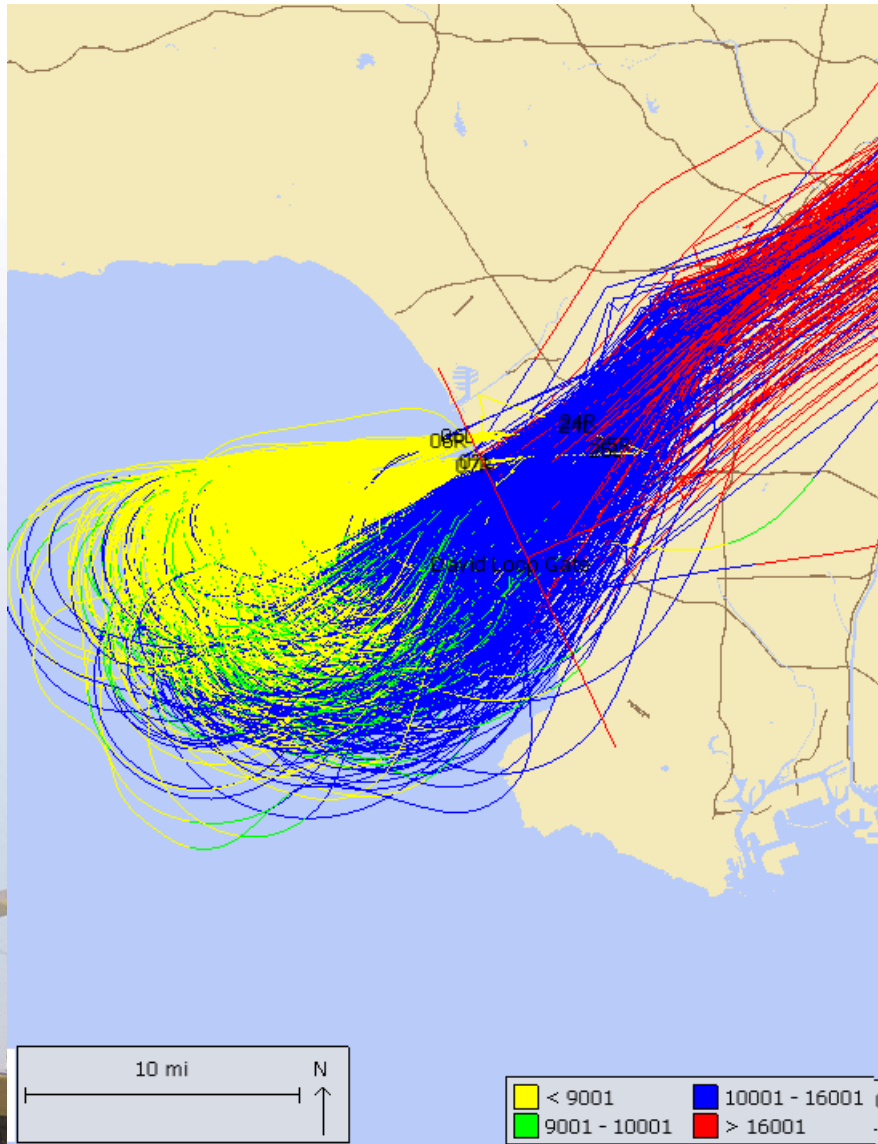


Previous  
Year

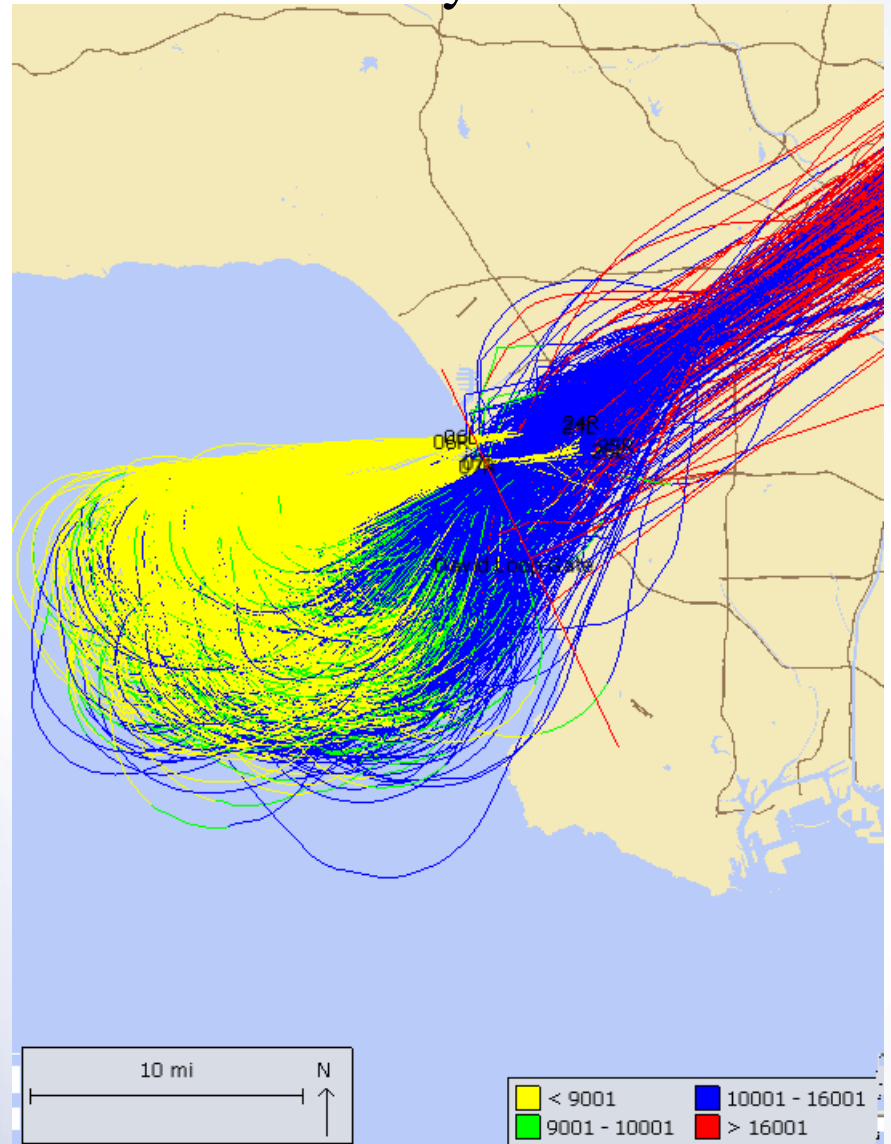


# LOOP - Altitude Information

December 08



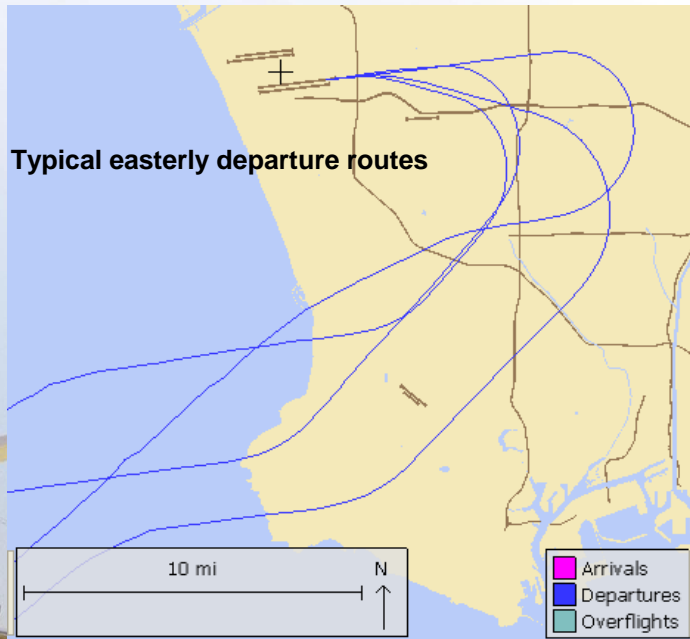
July 09



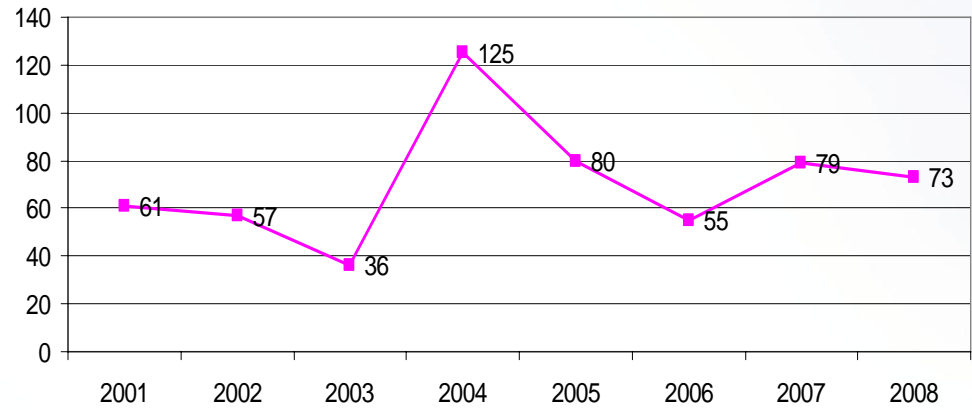


# Non-Conforming East Departures Midnight to 6:30 AM

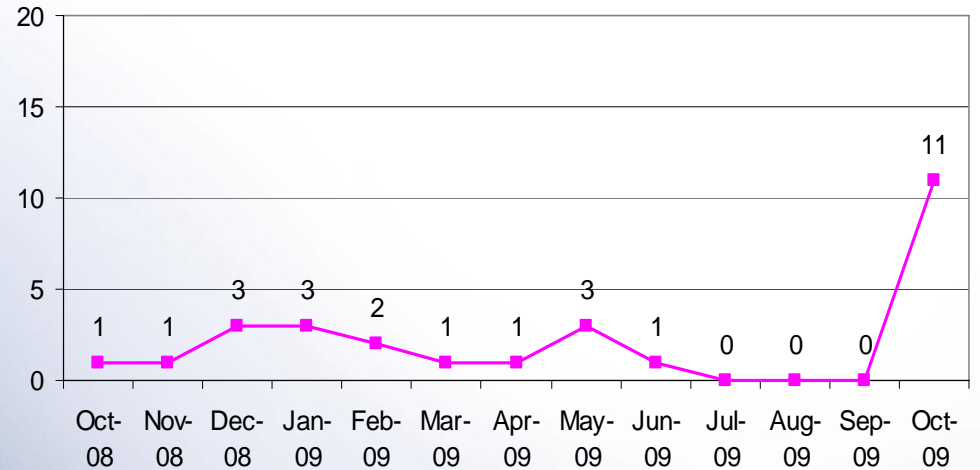
This report shows a summary of aircraft operations that depart to the east while the airport is still conducting westerly departures between midnight and 6:30 a.m. These individual easterly departures usually occur when the pilot of a heavy aircraft (e.g. B747s) determines that the tail wind is too great for the weight of the aircraft and requests to depart east into the wind for aircraft safety.



### Annual Comparison

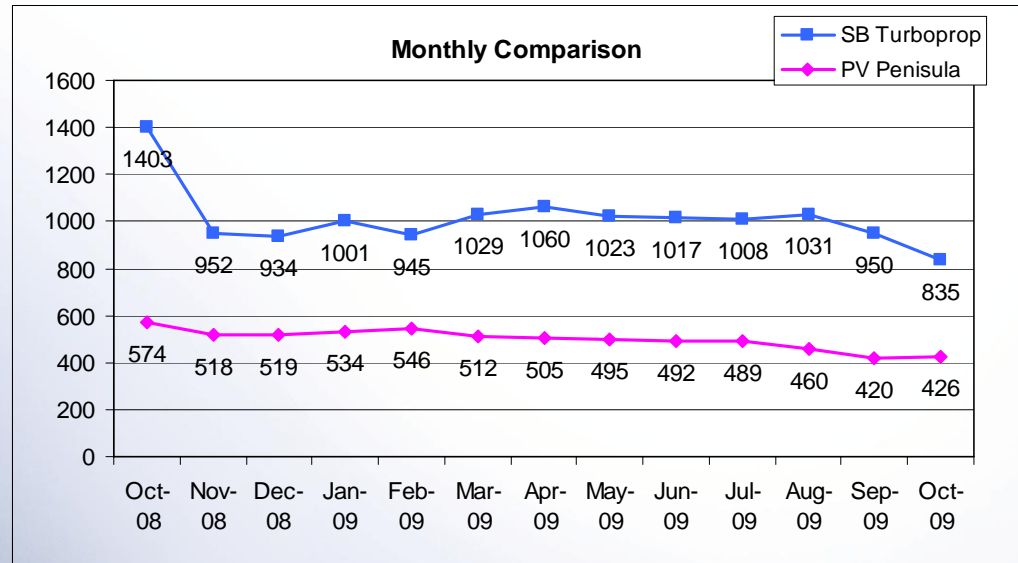
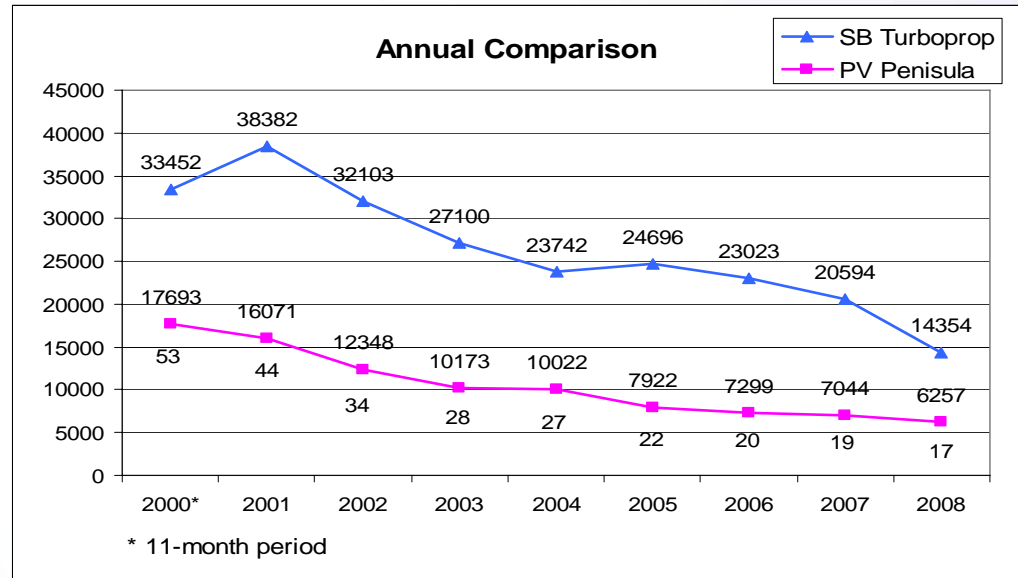
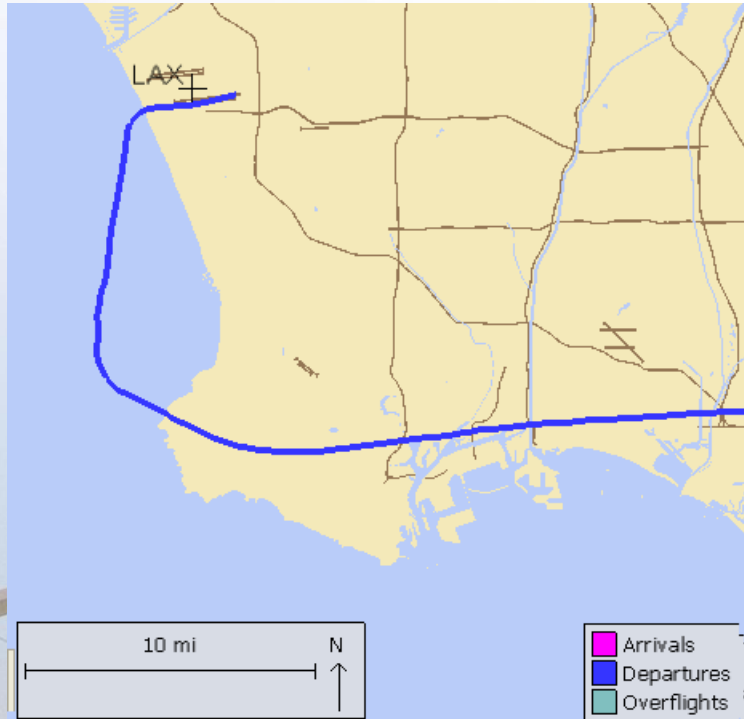


### Monthly Comparison



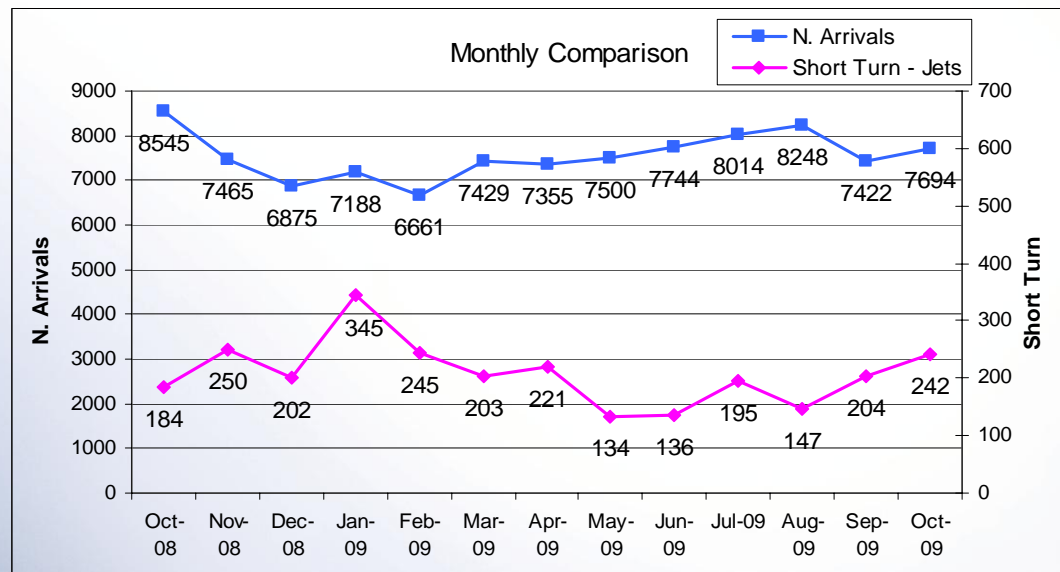
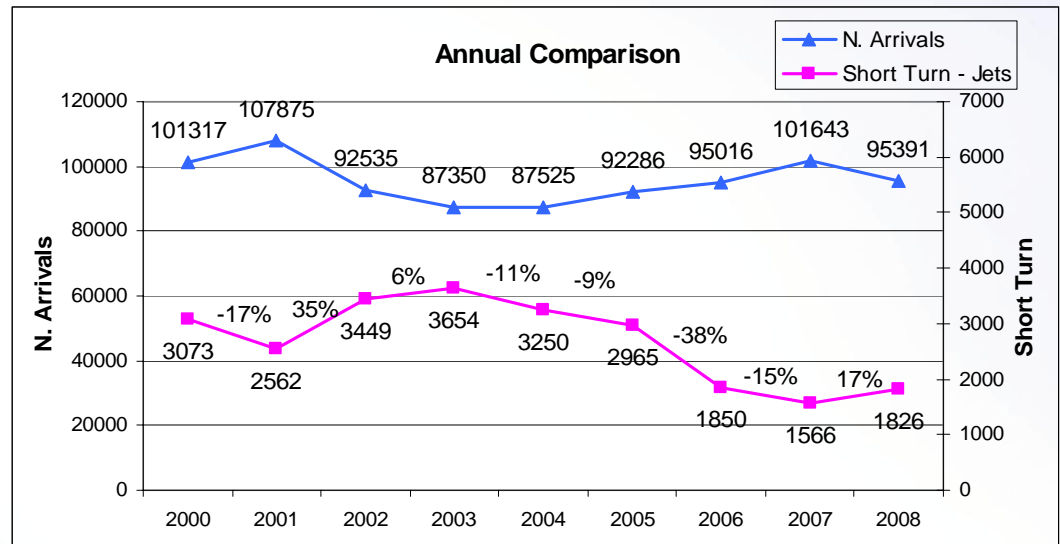
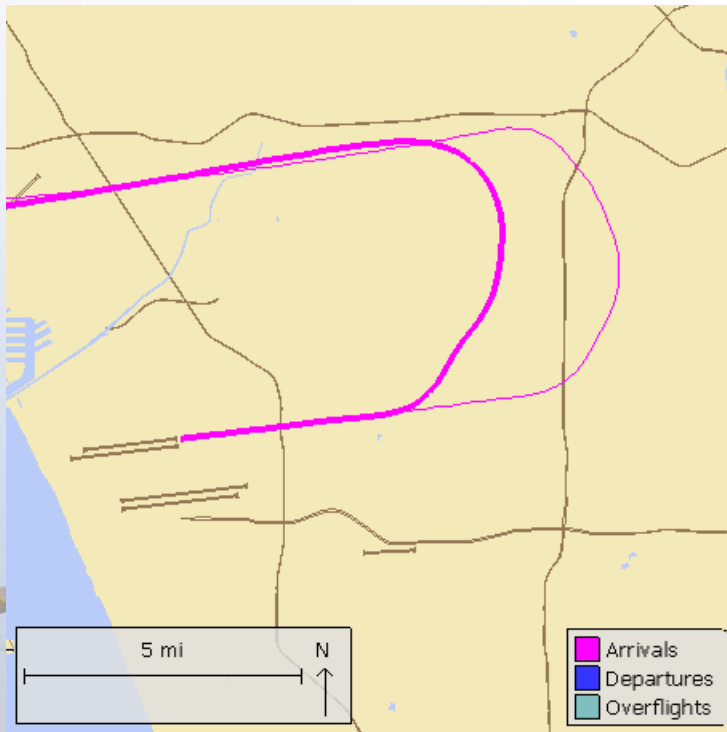
# Palos Verdes Peninsula – Turboprop Overflights

Monitoring southbound turboprops departing from LAX that overfly Peninsula

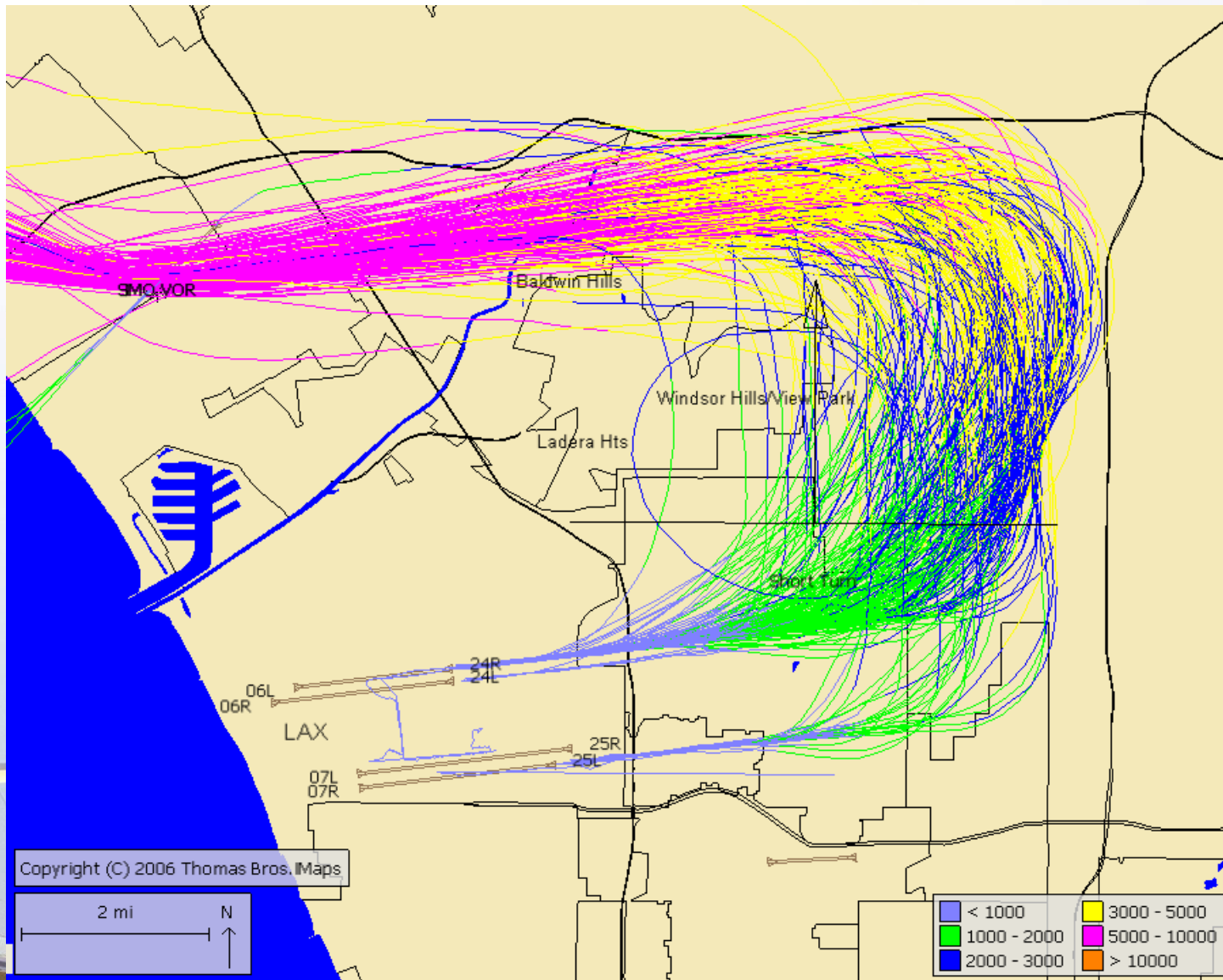


# Short Turn Arrivals

Arriving jet aircraft turning early prior to reaching the Harbor Freeway to land at LAX

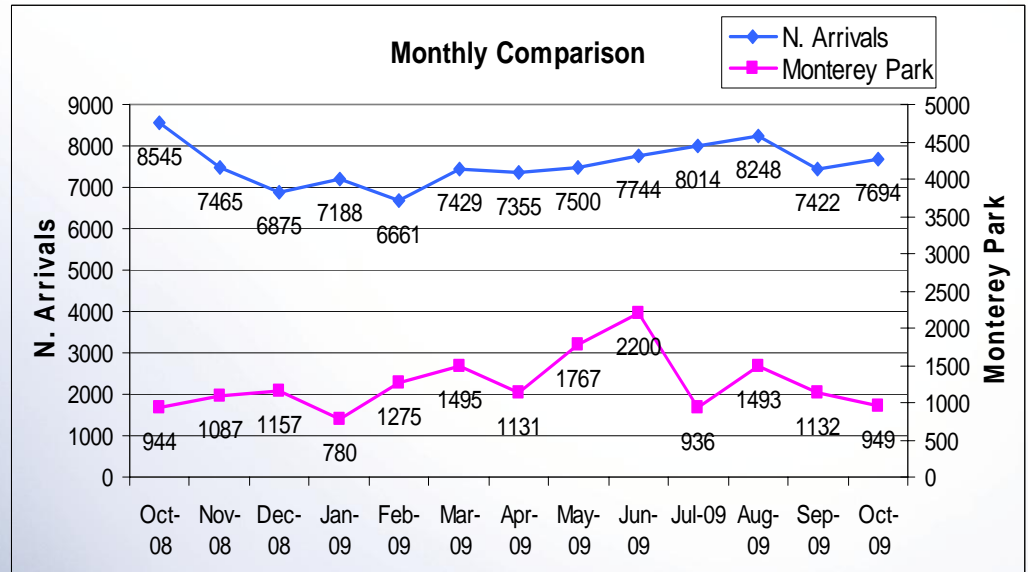
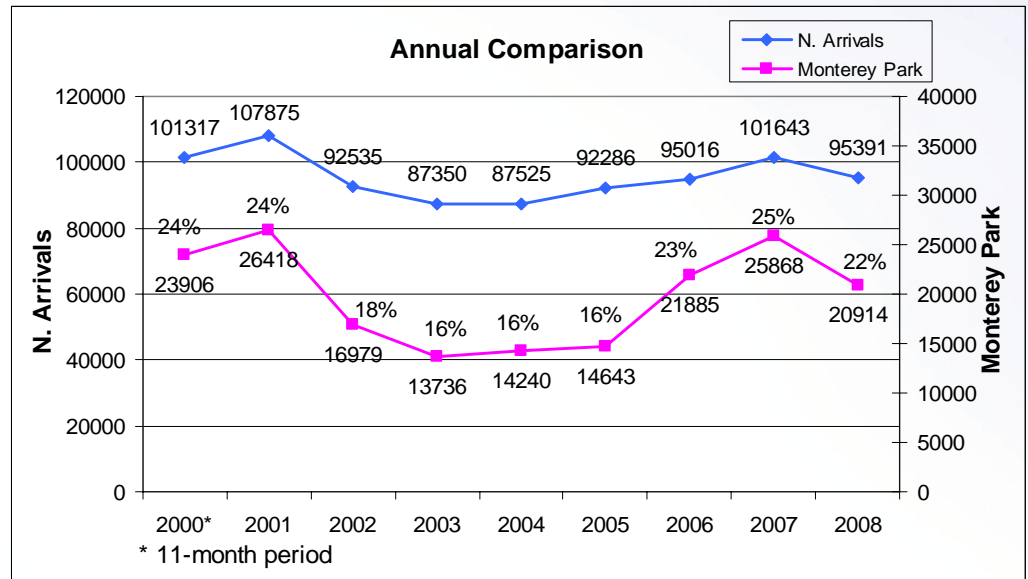
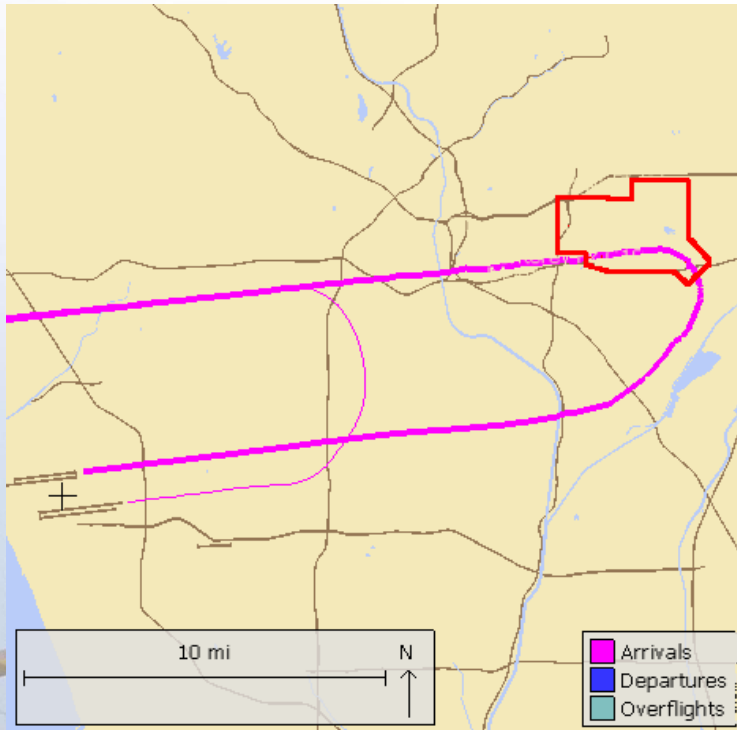


# Short Turn Arrival Flight Tracks



# Extended Downwind Approach

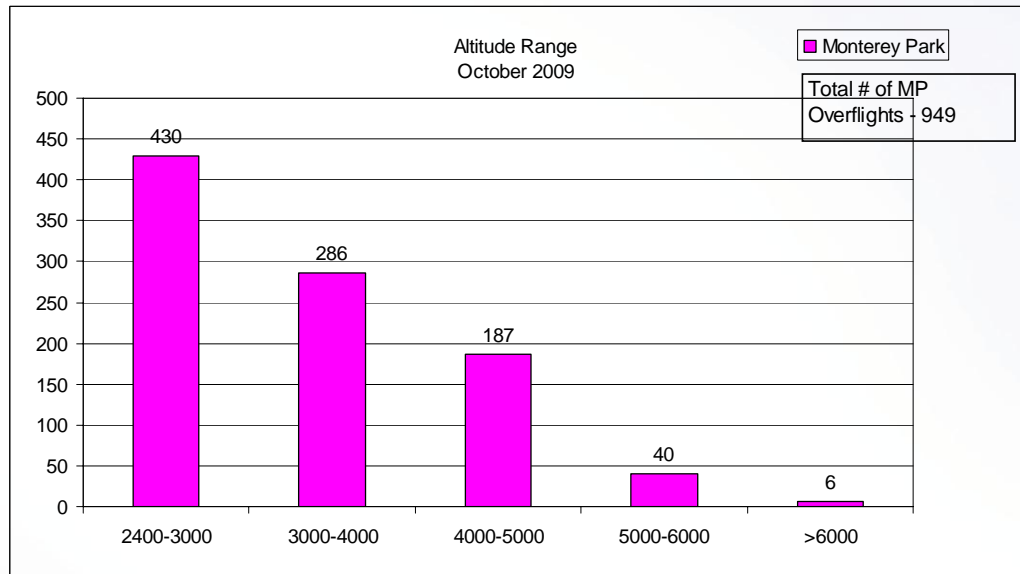
Monitoring north arrivals extending downwind over Monterey Park boundary



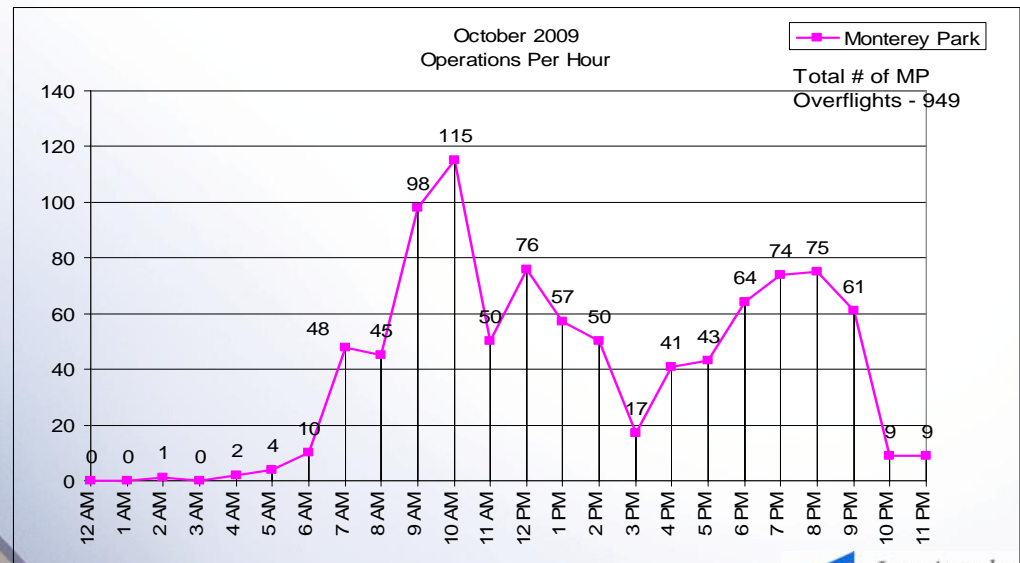


# Extended Downwind Approach October 2009

Altitude over  
Monterey Park

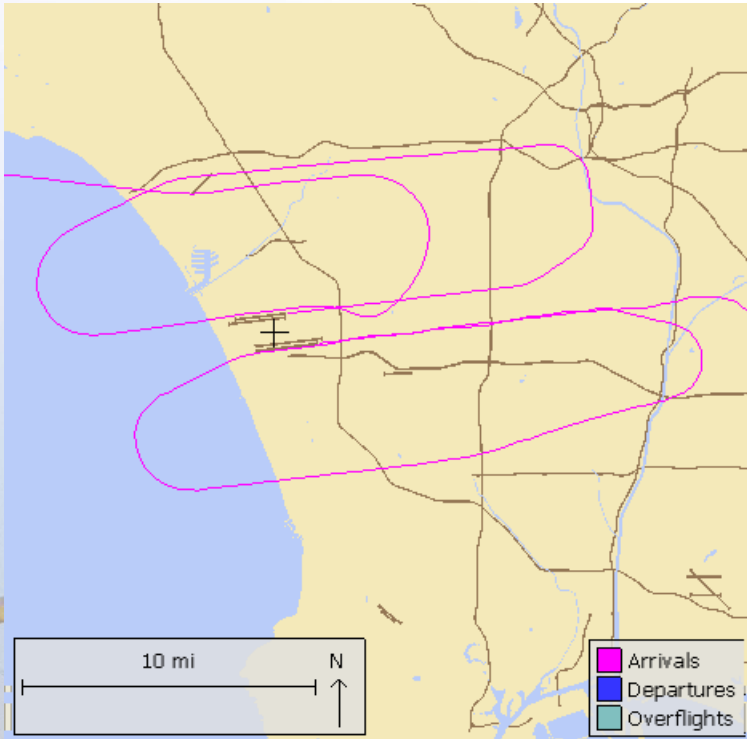


Number of  
Operations By  
Time of Day

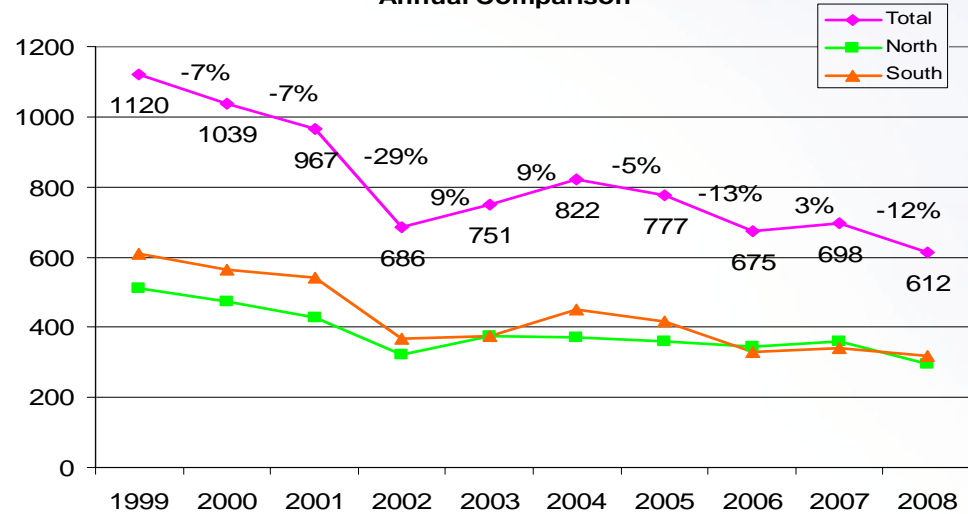


# Go-Arounds

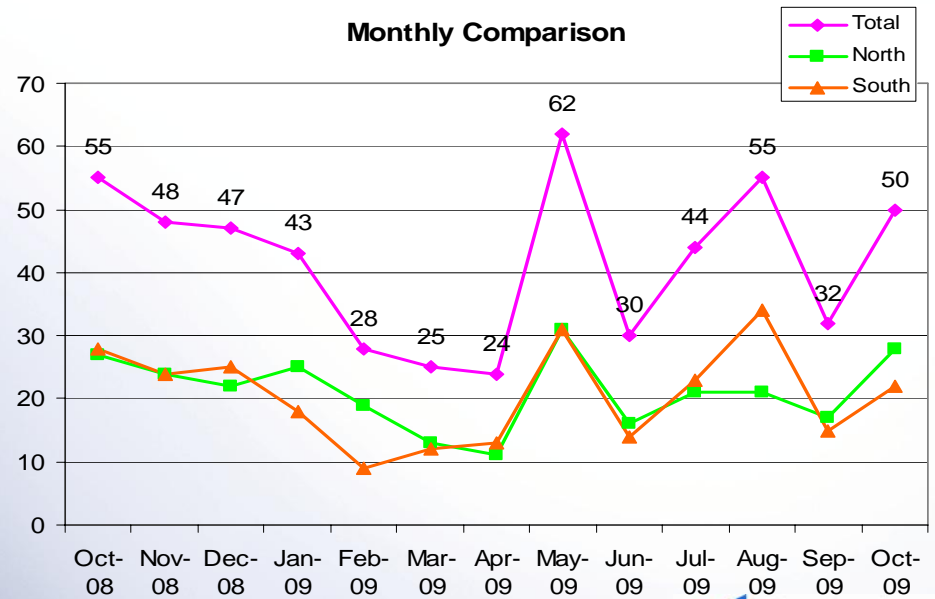
Monitoring pilot or ATC initiated go-arounds or missed approaches



Annual Comparison



Monthly Comparison



# Go-Arounds – Not Maintaining RWY Headings

