



Statistical Update on Aircraft Operations

May 9, 2018

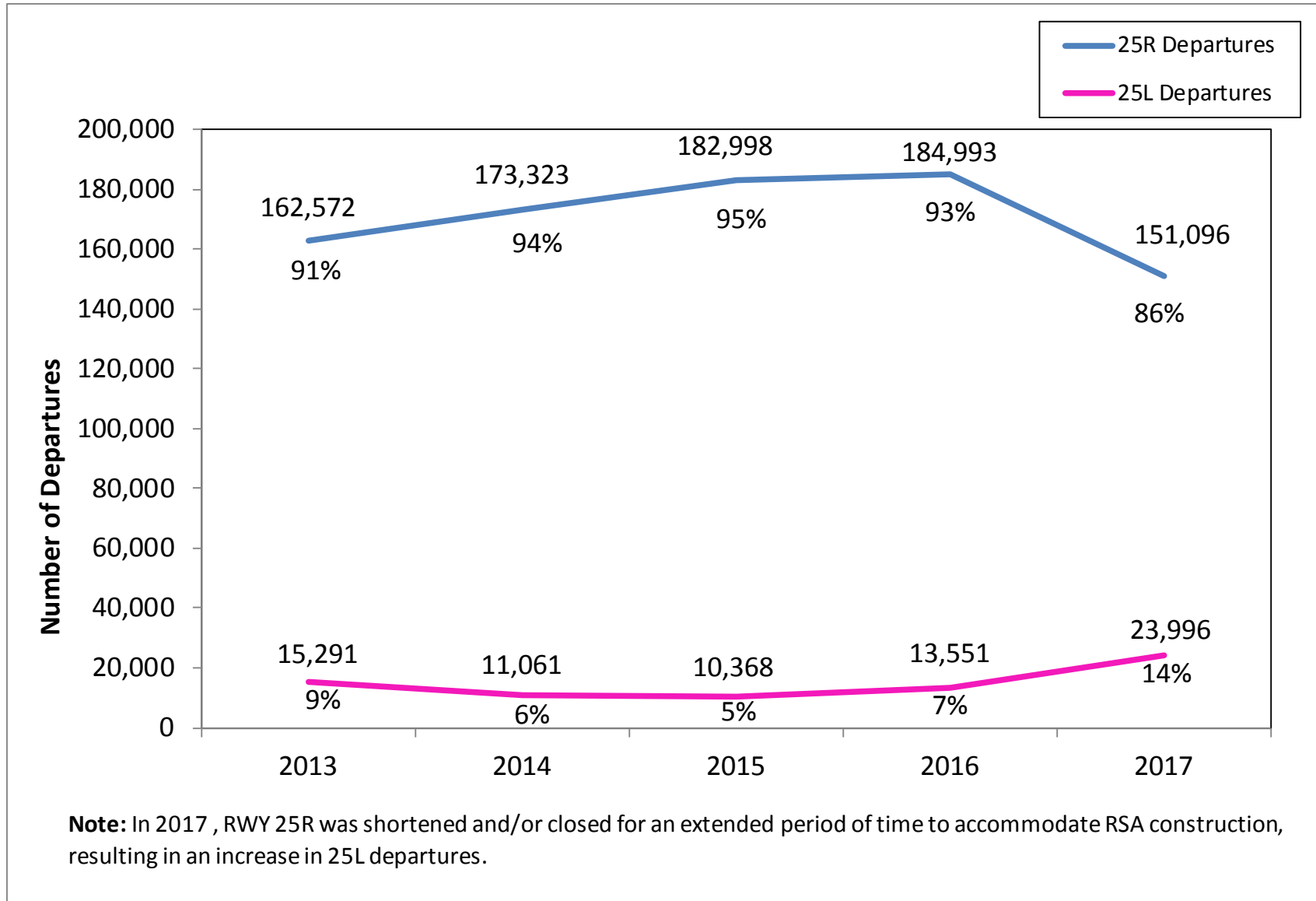
LAX/Community Noise Roundtable

Overview

Statistical information on the following operations:

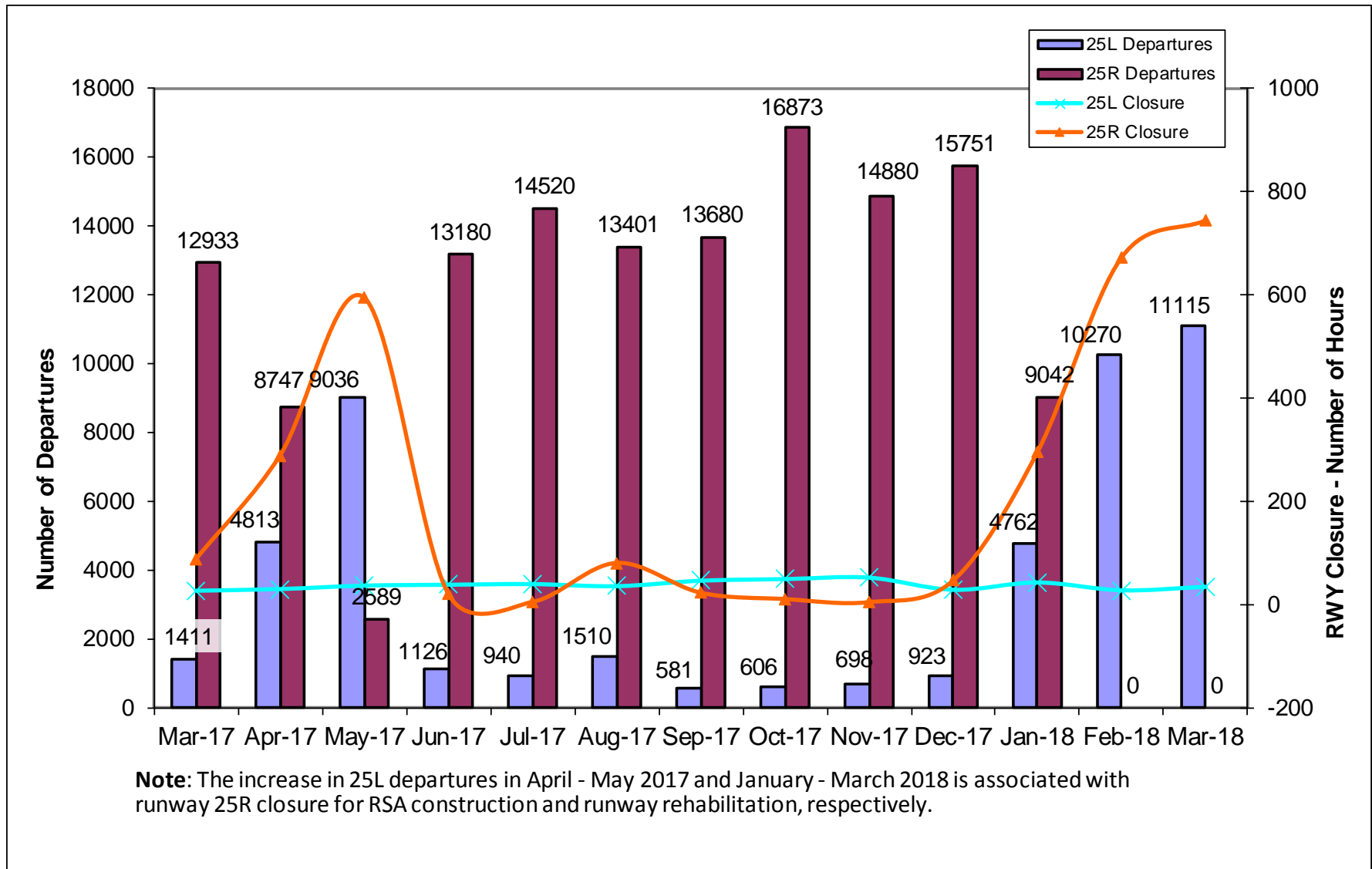
- 25L Departures
- Palos Verdes Overflights

Departures – Runways 25L and 25R Annual Comparison



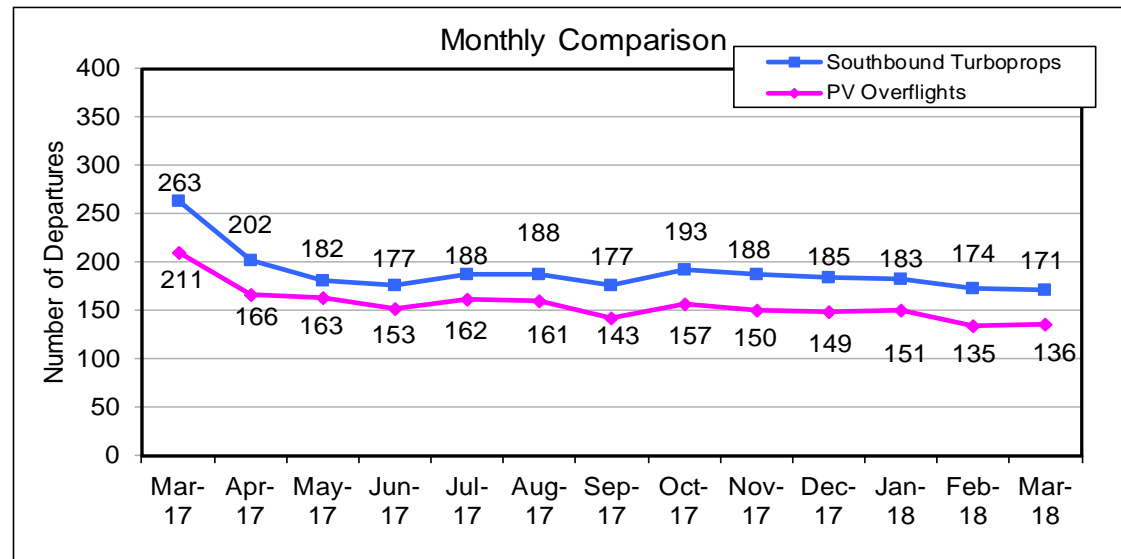
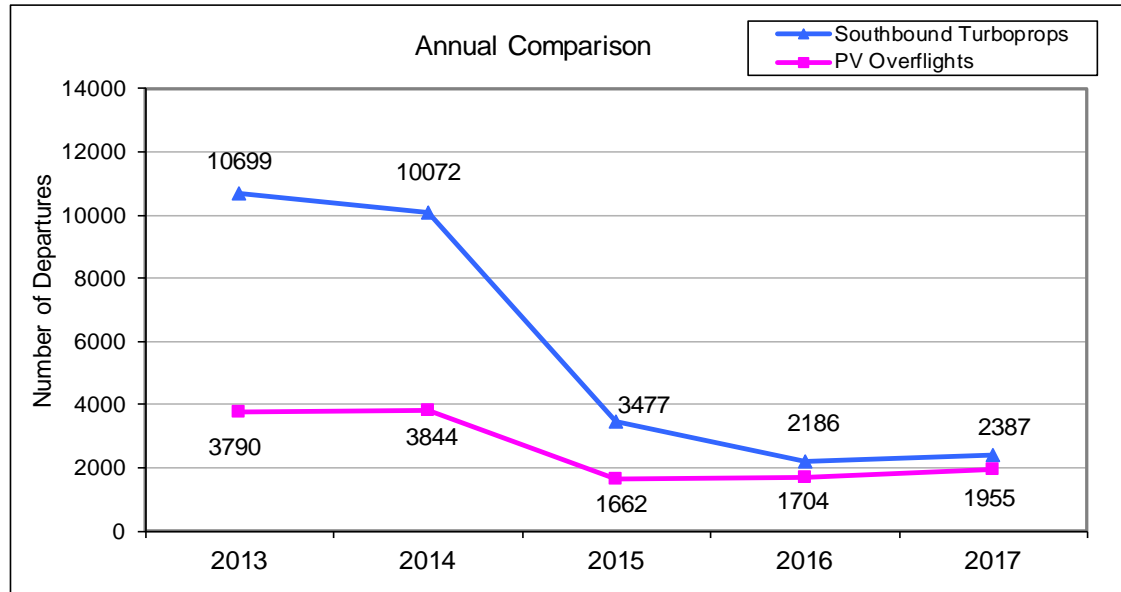
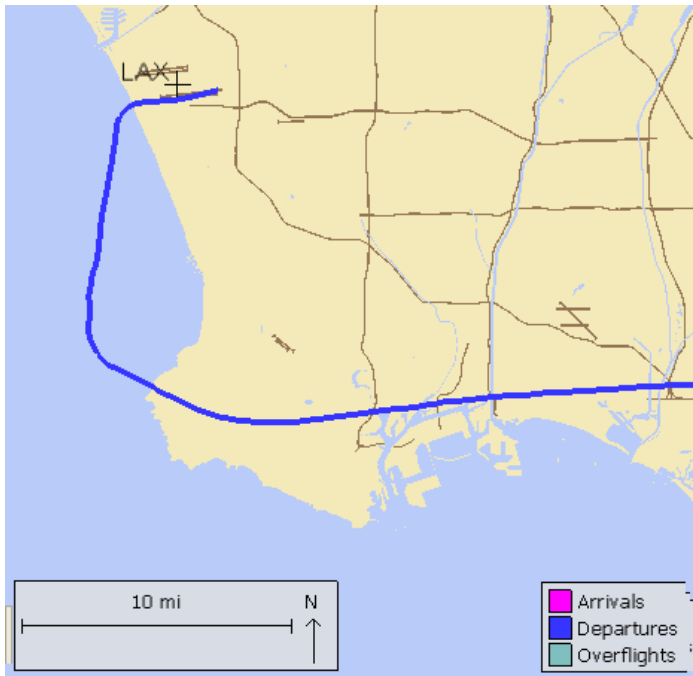
Departures – Runways 25L and 25R

13-month period



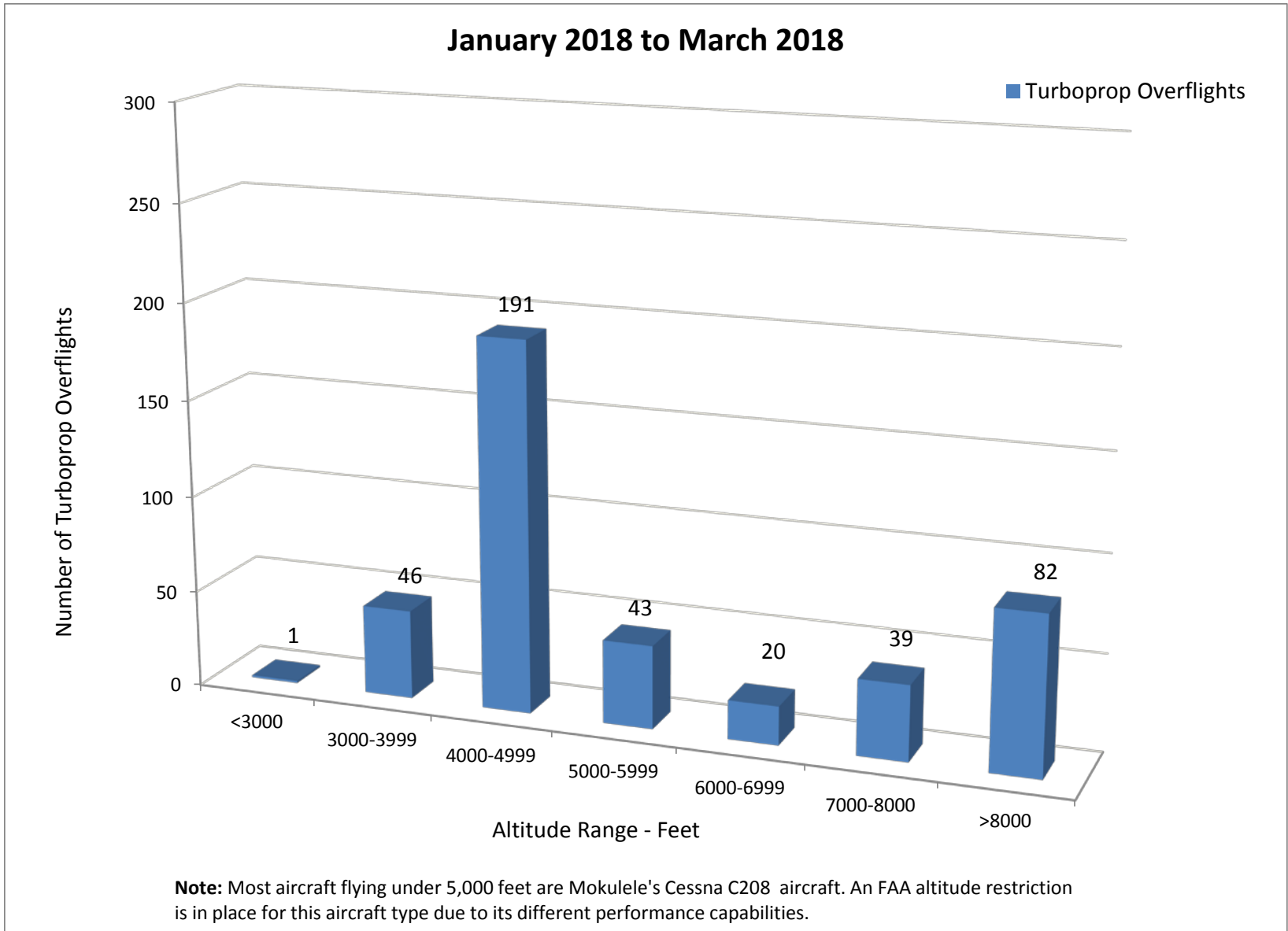
Palos Verdes Peninsula – Turboprop Overflights

Monitoring southbound turboprops departing from LAX that overfly Peninsula



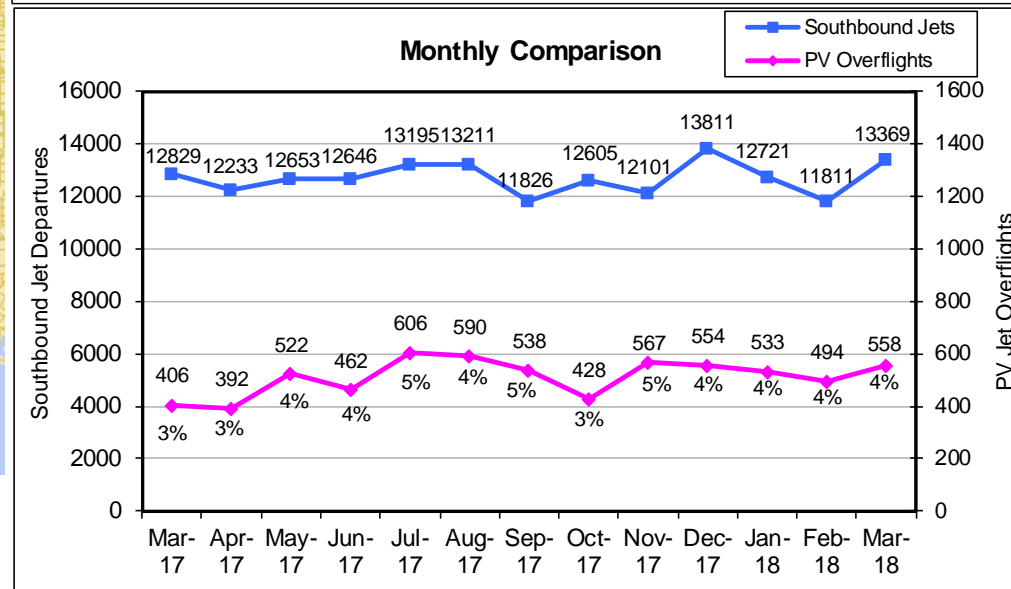
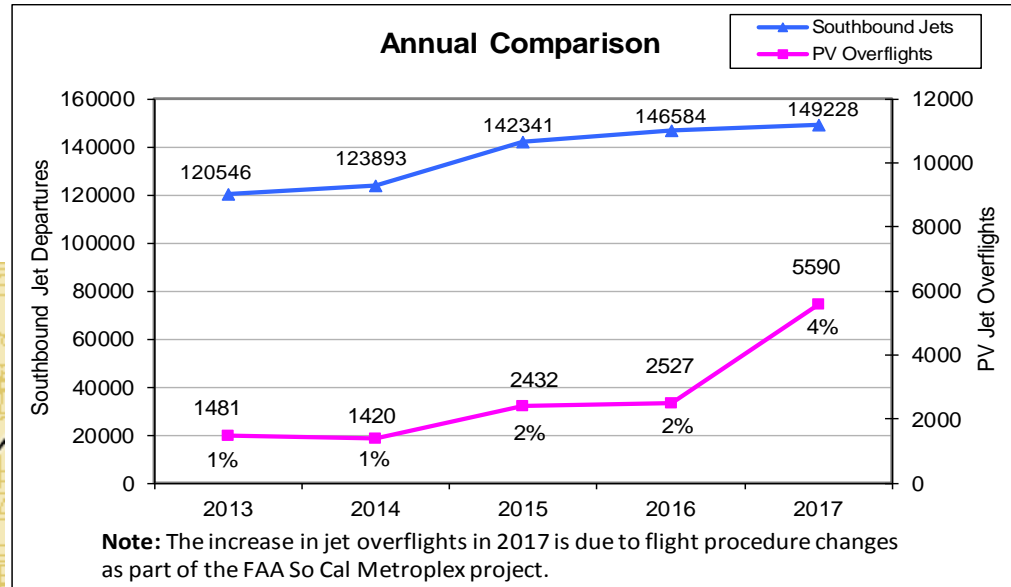
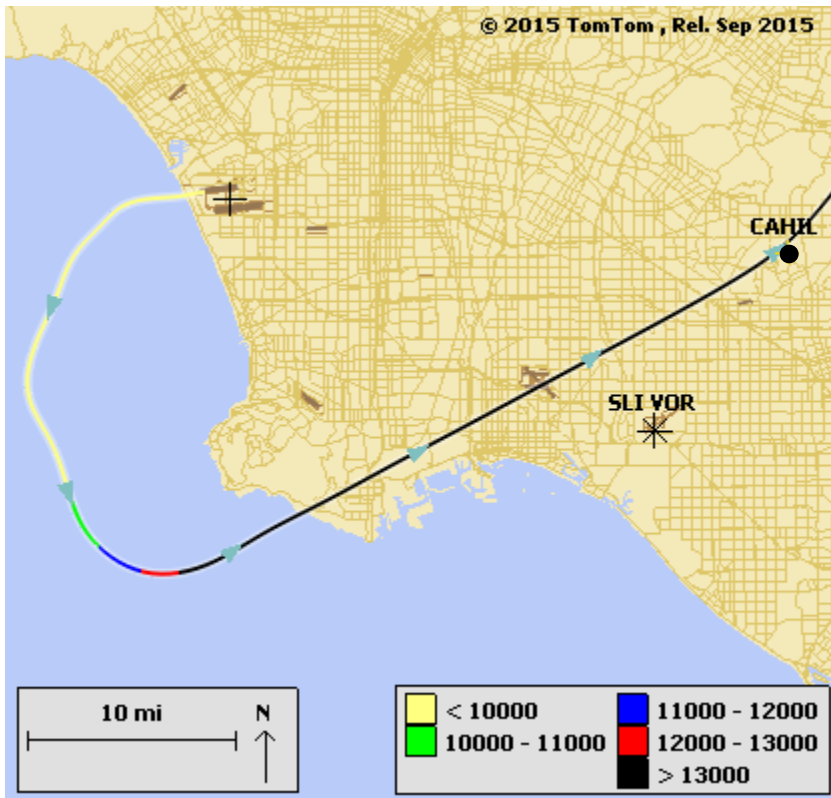
Note: Prior to SkyWest’s fleet mix change (turboprop to jet) in early 2015, monthly southbound turboprops were ~800 and PV overflights were ~300.

Turboprop Altitudes over PV



Palos Verdes Peninsula – Jet Overflights

Monitoring southbound jets departing from LAX that overfly Peninsula



Jet Altitudes over PV Peninsula

