



# Statistical Update on LAX Aircraft Operations

July 12, 2017

LAX/Community Noise Roundtable

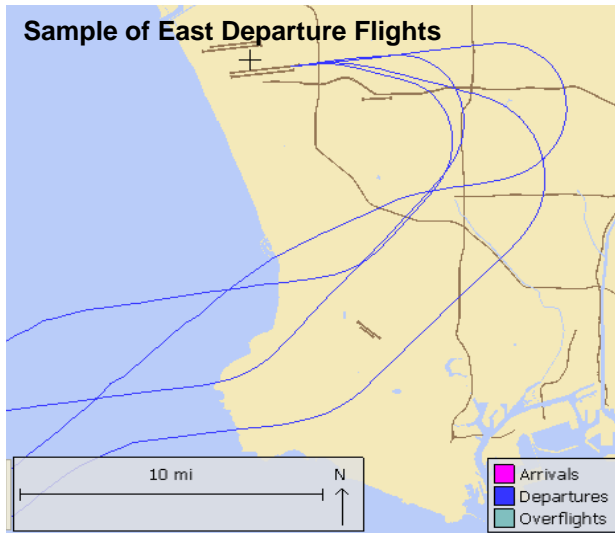
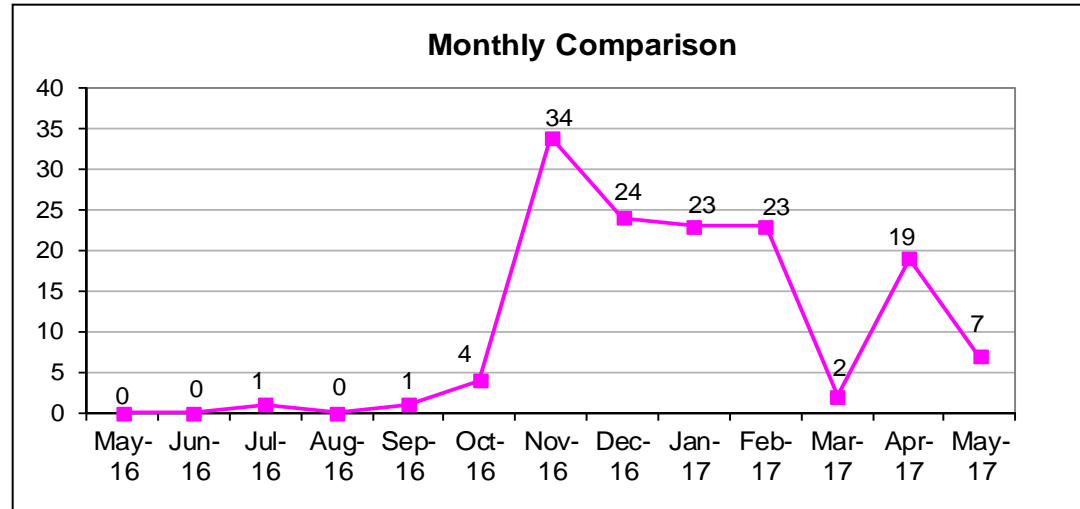
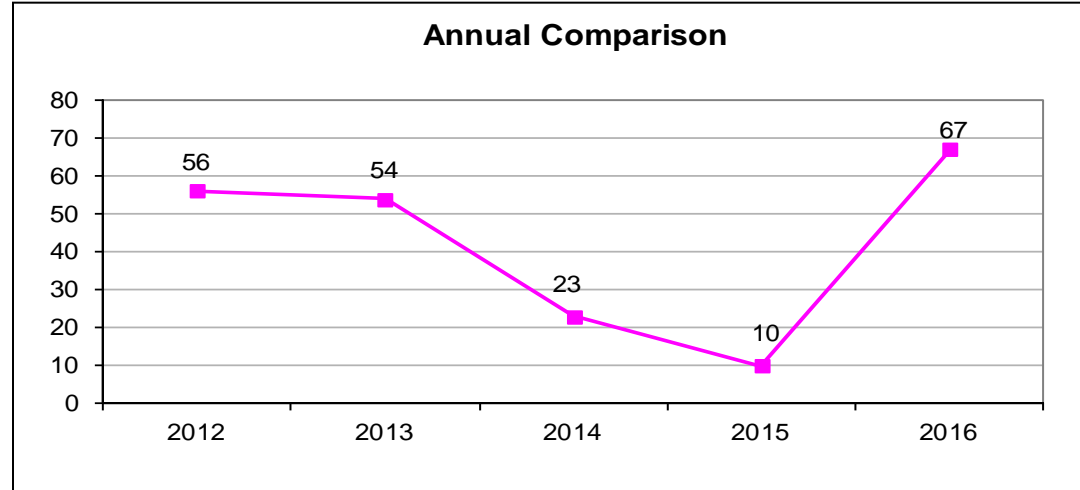
# Overview

Statistical information on the following operations:

- East Departures
- Early Turns
- Go-arounds

# Non-Conforming East Departures Midnight to 6:30 AM

This report shows a summary of aircraft operations departing to the east while the airport is still conducting westerly departures between midnight and 6:30 a.m. These individual easterly departures usually occur when the pilot of a heavy aircraft (e.g. B747s) determines that the tail wind is too great for the weight of the aircraft and requests to depart east into the wind for aircraft safety.



# Non-Conforming East Departures Midnight to 6:30 AM

May 2017

Date	Time	Operator	Flight No.	Aircraft	Wind Conditions
05/10/17	0:17*	QFA	QFA12	B744	Wind 120 degrees at 11 knots, gust 15 knots
05/10/17	0:39*	CAL	CAL009	B77W	Wind 120 degrees at 7 knots
05/10/17	0:56*	VOZ	VOZ8	B77W	Wind 110 degrees at 7 knots
05/10/17	0:57*	CPA	CPA883	B77W	Wind 110 degrees at 7 knots
05/10/17	1:00*	AAR	AAR203	B744	Wind 110 degrees at 7 knots
05/18/17	2:15*	AAL	AAL193	B77W	Wind calm
05/19/17	2:22*	AAL	AAL193	B77W	Wind calm

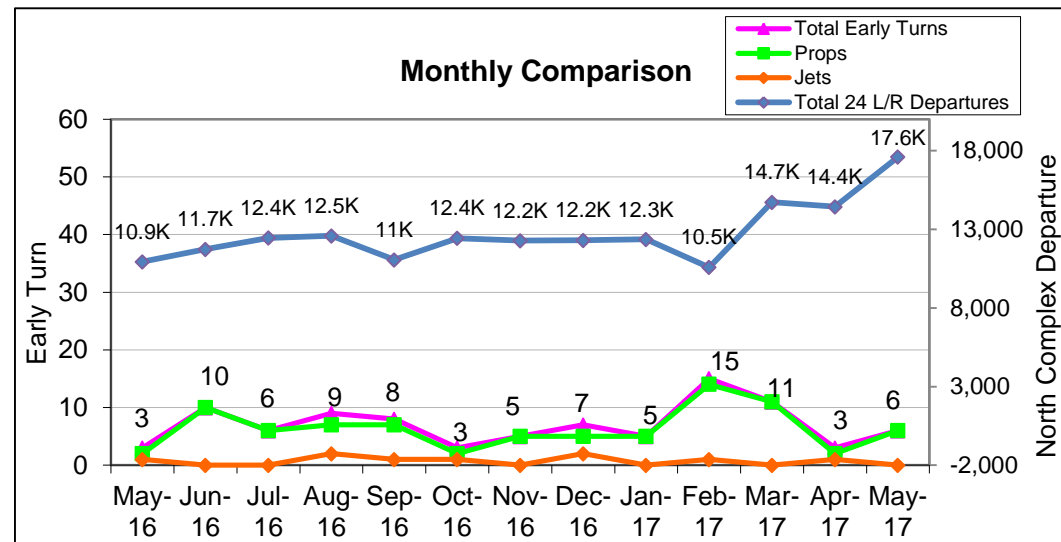
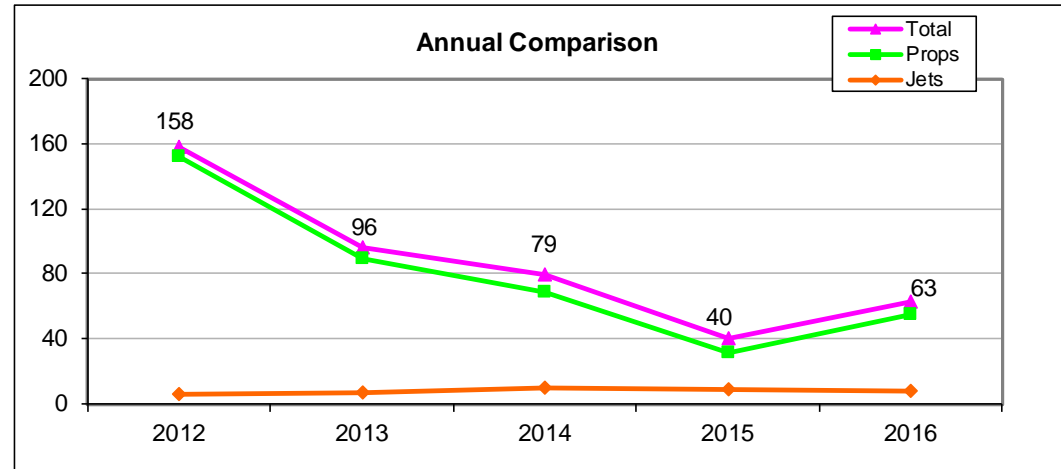
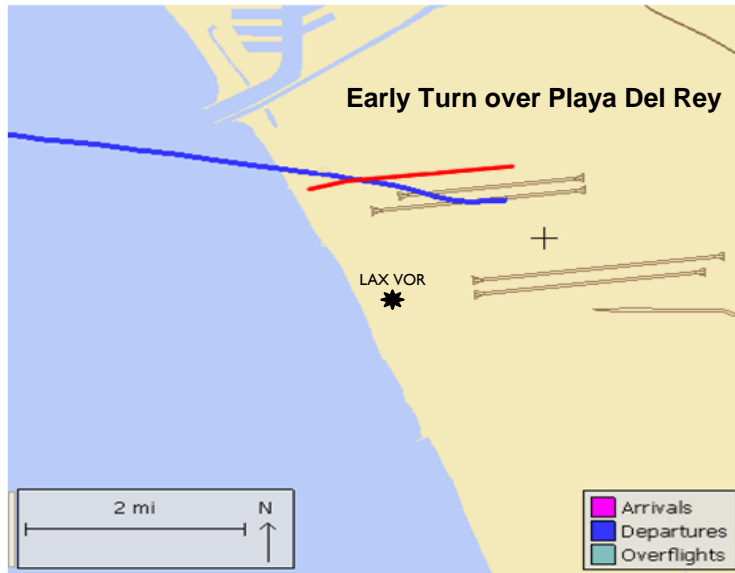
\*Noise complaint(s) attributed to incident.

## **Note**

AAL is AMERICAN AIRLINES, INC.  
AAR is ASIANA AIRLINES  
CAL is CHINA AIRLINES  
CPA is CATHAY PACIFIC AIRWAYS LIMITED  
QFA is QANTAS AIRWAYS LTD.  
VOZ is VIRGIN AUSTRALIA

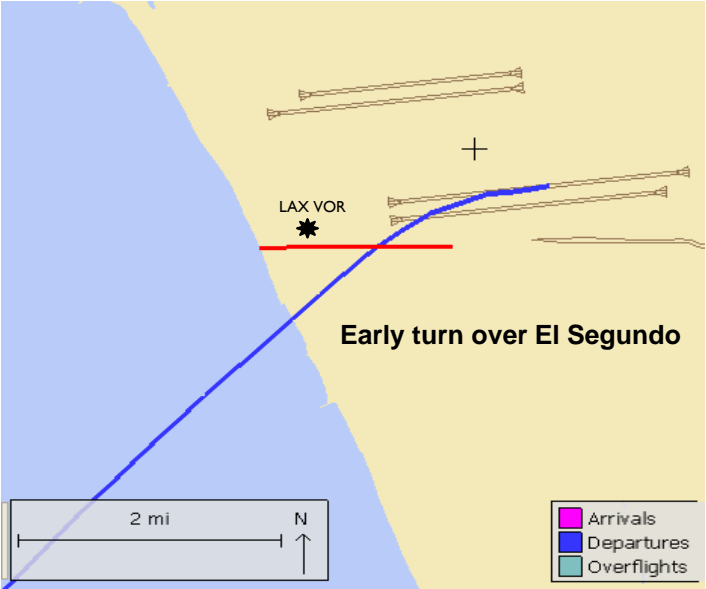
# Early Turns to the North

Aircraft departing to the ocean turn early prior to reaching the shoreline

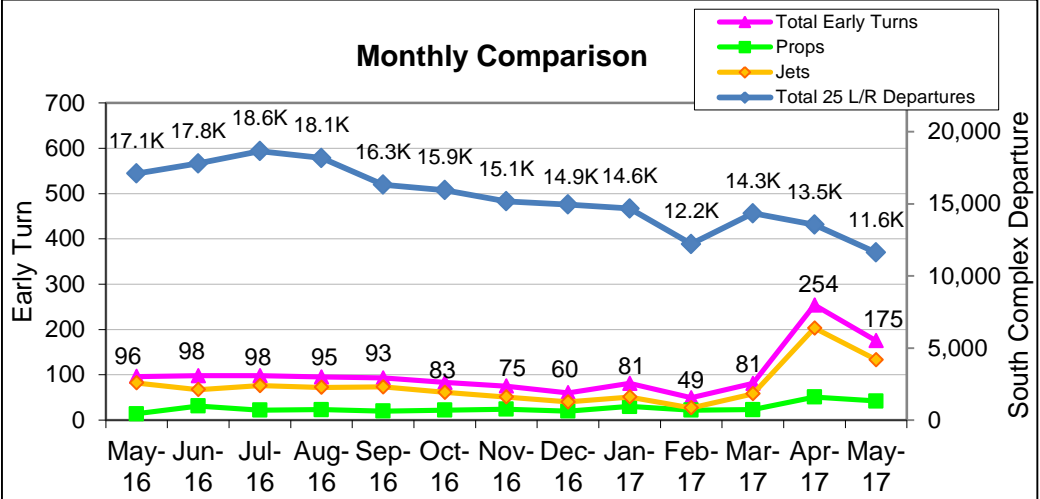
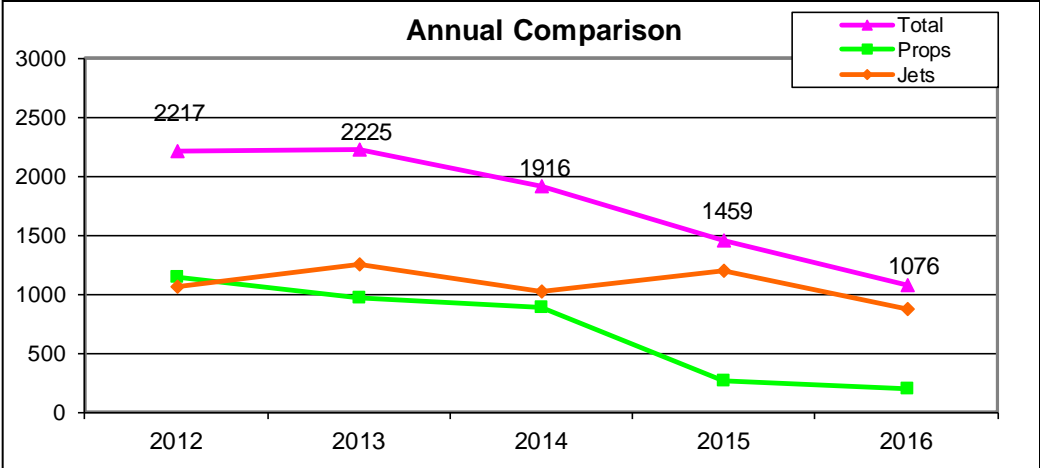


# Early Turns to the South

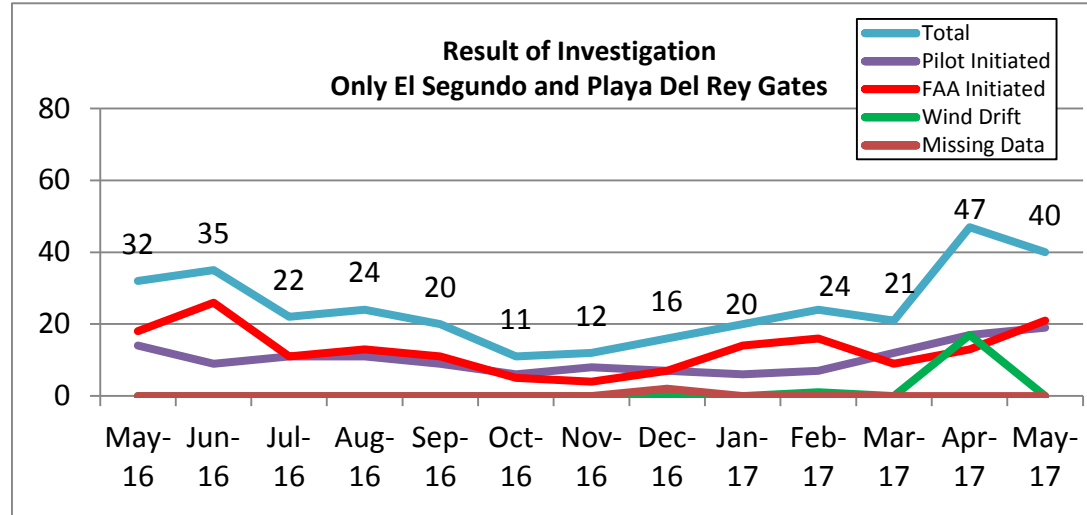
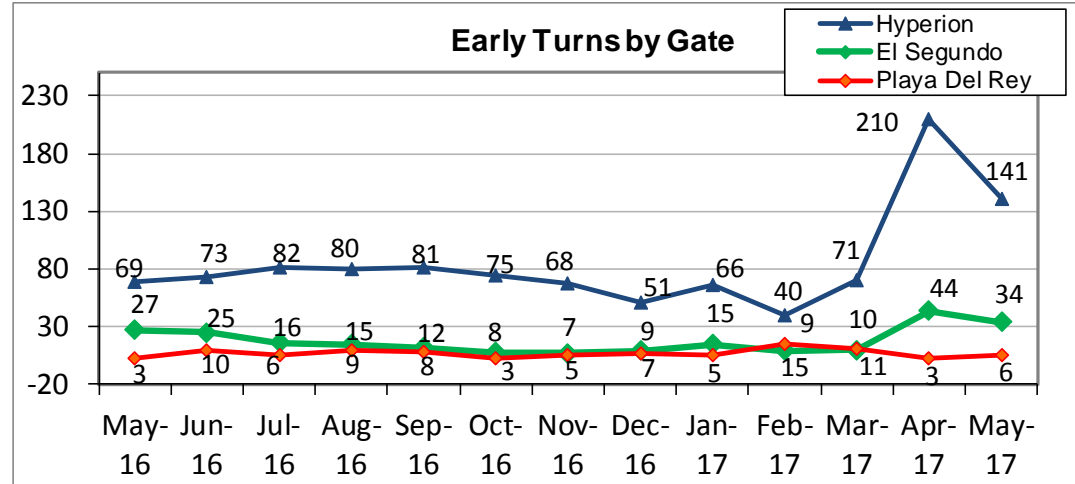
Aircraft departing to the ocean turn early prior to reaching the shoreline



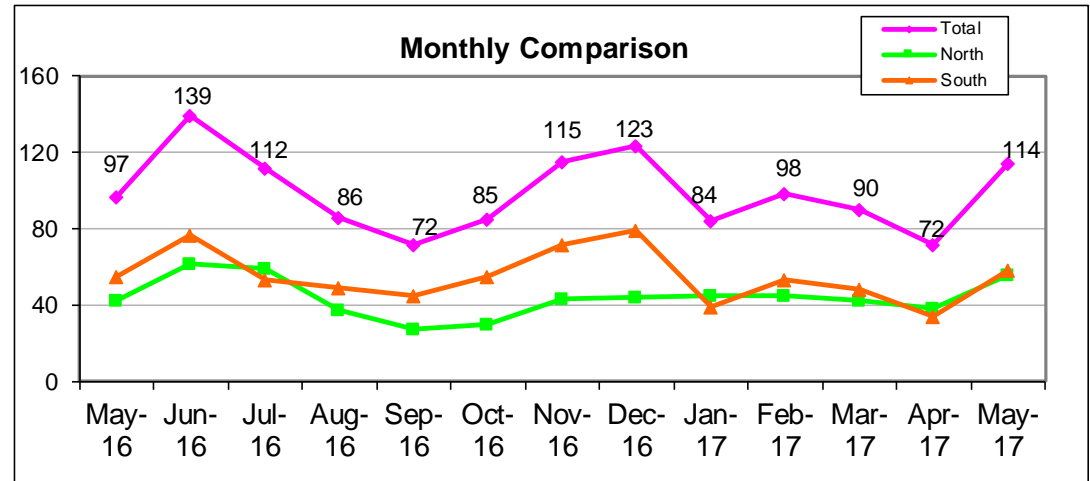
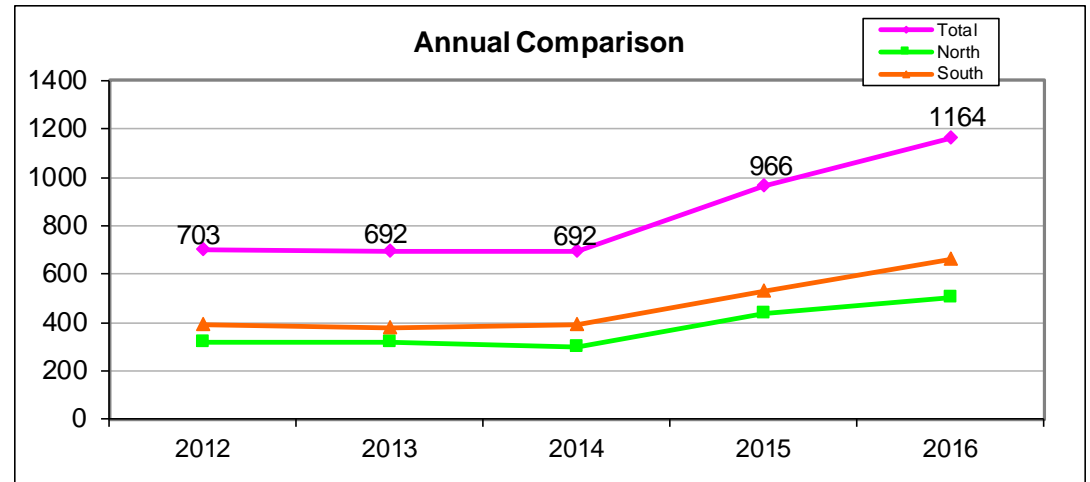
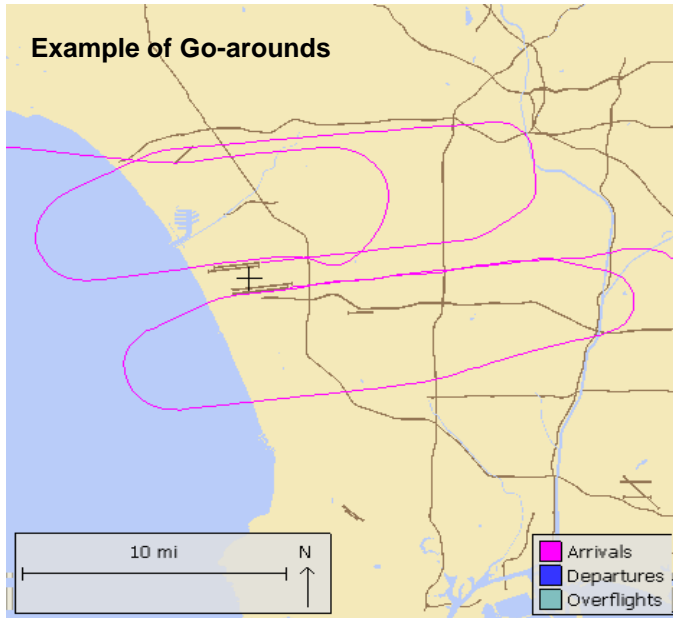
**Note:** The increase in Early Turns for April and May 2017 is due to Rwy 25R Closure for RSA Construction.



# Early Turn Breakdown



Monitoring pilot or ATC initiated go-arounds or missed approaches





# Go-Arounds – Not Maintaining RWY Headings

Example of Go-Arounds not maintaining runway headings

