

Evaluation of LAX North Downwind Arrivals

Technical Memorandum

HMMH Report No. 306430_LAWA_003

September 1, 2016

Prepared for:

Los Angeles World Airports

Environmental Programs

7301 World Way West

Los Angeles, CA 90045

&

Environmental Science Associates

2600 Capitol Ave, Suite 200

Sacramento, CA 95816

Prepared by:

Mary Ellen Eagan

Gene Reindel

Hugh J Enxing

Dominic Scarano

Adam Scholten



HMMH

77 South Bedford Street

Burlington, MA 01803

Contents

Appendix E – Complaint Distribution During 2014 and 2015 1

Figures

Figure 1. Complaints West of SMO VOR, January – June 2014 1

Figure 2. Complaints West of SMO VOR, July – December 2014..... 1

Figure 3. Complaints West of SMO VOR, January – June 2015 2

Figure 4. Complaints West of SMO VOR, July – December 2015..... 2

Figure 5. Complaints East of SMO VOR, January – June 2014 3

Figure 6. Complaints East of SMO VOR, July – December 2014..... 3

Figure 7. Complaints East of SMO VOR, January – June 2015 4

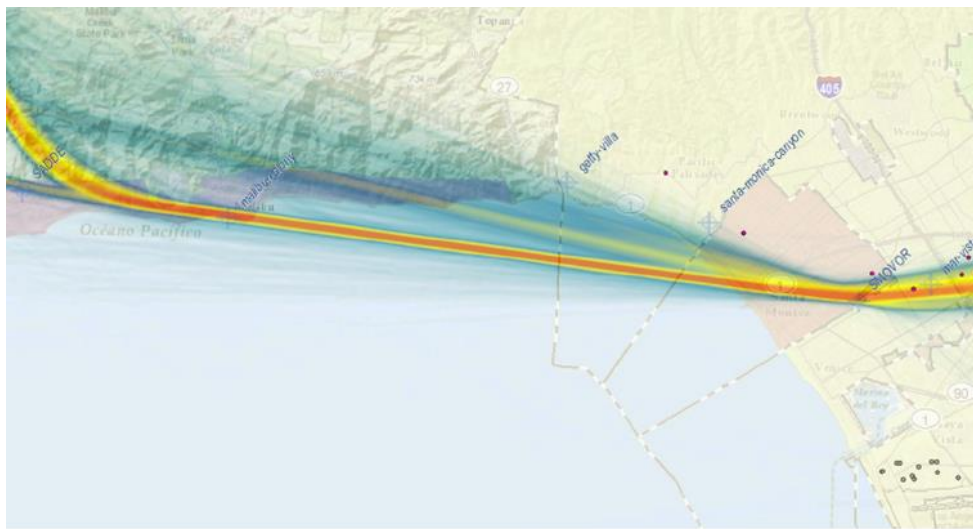
Figure 8. Complaints East of SMO VOR, July – December 2015..... 4

Figure 9. Complaint Timeline, 2010 – 2015 5

Figure 10. Complaint Timeline, 2014 – 2015 5

Appendix E – Complaint Distribution During 2014 and 2015

Figure 1. Complaints West of SMO VOR, January – June 2014



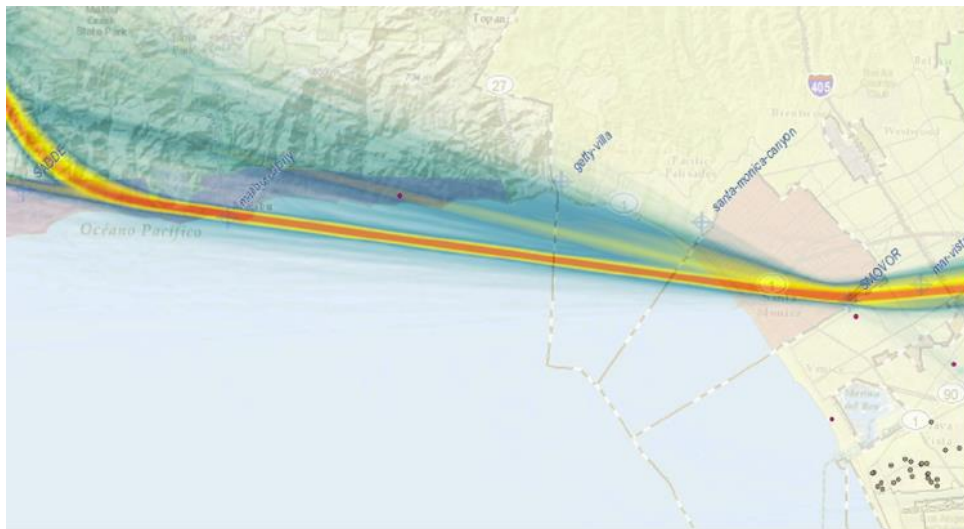
Complainant Data:
January – June 2014

Flight Track Data:
April 2014

● Complainant Location

Source: LAWA, HMMH 2016

Figure 2. Complaints West of SMO VOR, July – December 2014



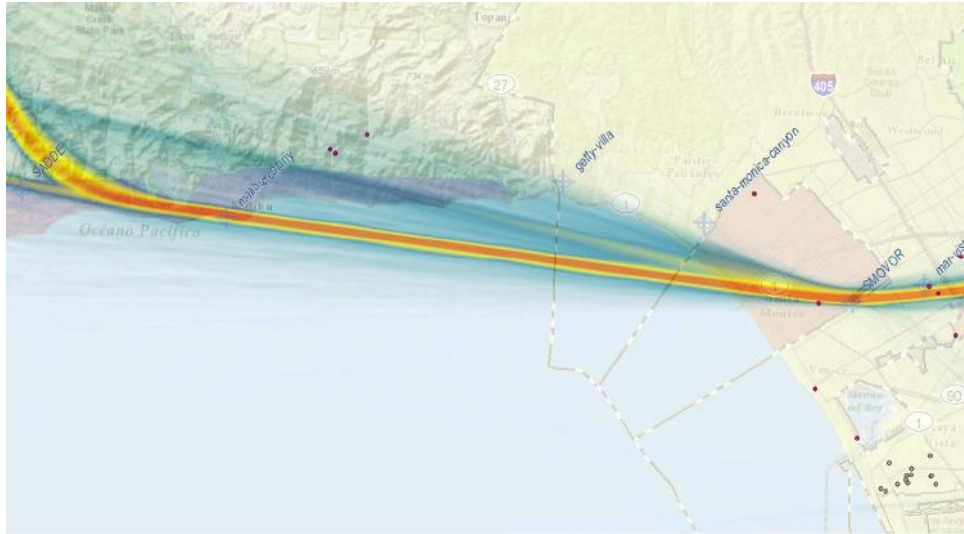
Complainant Data:
July – December 2014

Flight Track Data:
October 2014

● Complainant Location

Source: LAWA, HMMH 2016

Figure 3. Complaints West of SMO VOR, January – June 2015



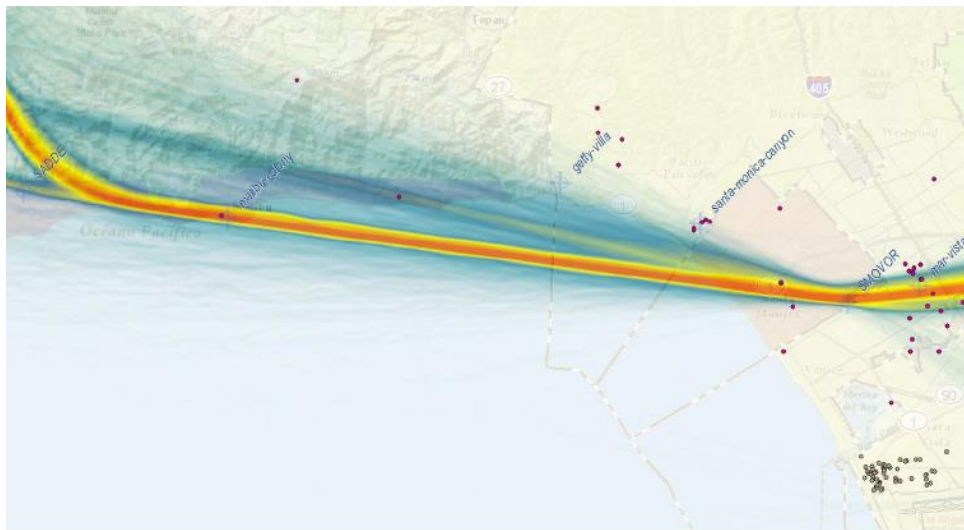
Complainant Data:
January – June 2015

Flight Track Data:
April 2015

● Complainant Location

Source: LAWA, HMMH 2016

Figure 4. Complaints West of SMO VOR, July – December 2015



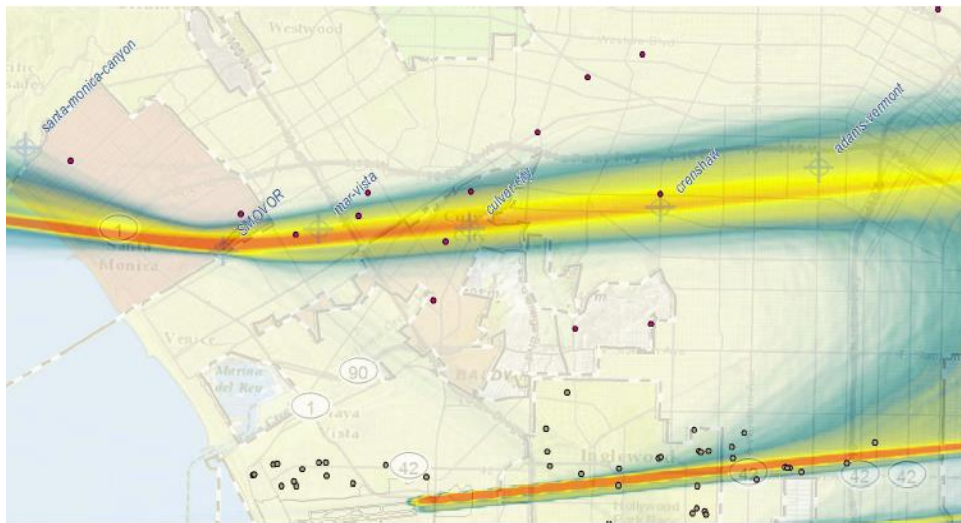
Complainant Data:
July – December 2015

Flight Track Data:
October 2015

● Complainant Location

Source: LAWA, HMMH 2016

Figure 5. Complaints East of SMO VOR, January – June 2014



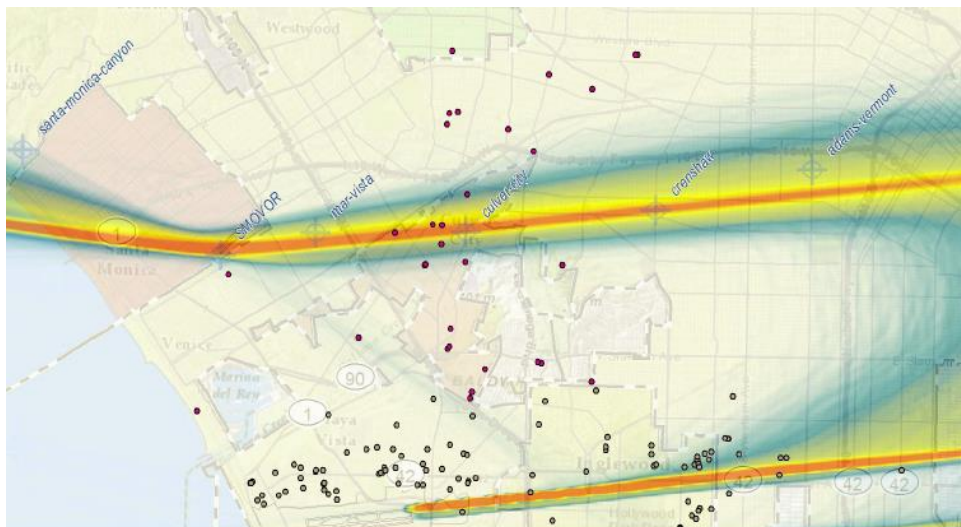
Complainant Data:
January – June 2014

Flight Track Data:
April 2014

● Complainant Location

Source: LAWA, HMMH 2016

Figure 6. Complaints East of SMO VOR, July – December 2014



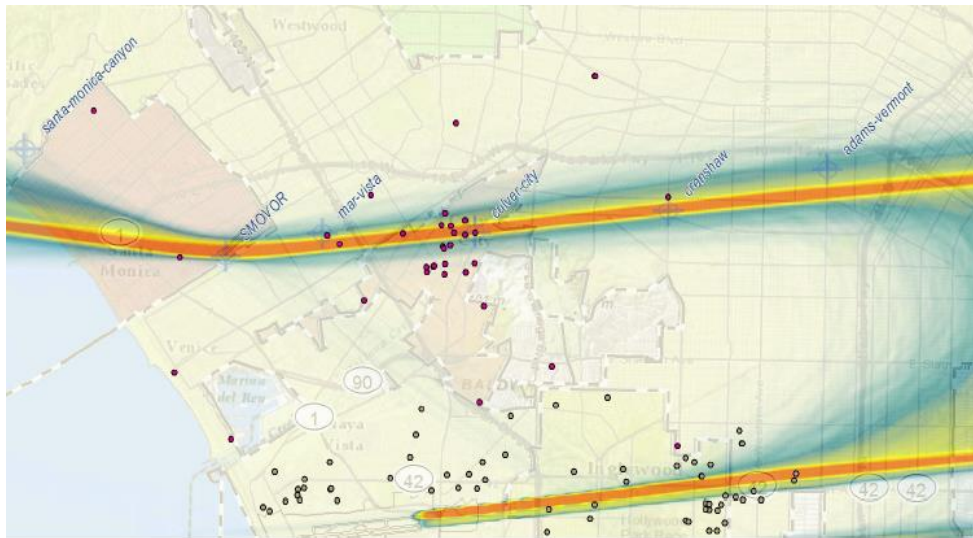
Complainant Data:
July – December 2014

Flight Track Data:
October 2014

● Complainant Location

Source: LAWA, HMMH 2016

Figure 7. Complaints East of SMO VOR, January – June 2015



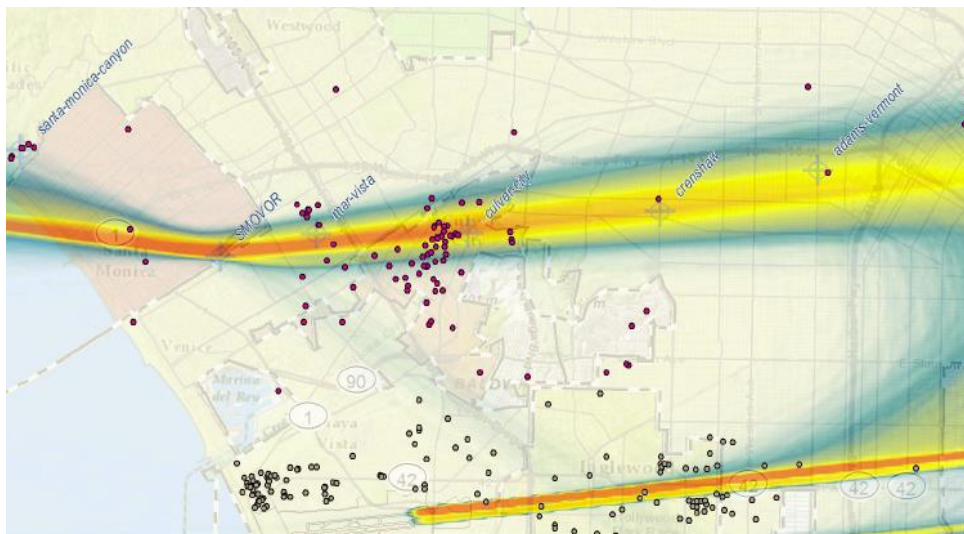
Complainant Data:
January – June 2015

Flight Track Data:
April 2015

● Complainant Location

Source: LAWA, HMMH 2016

Figure 8. Complaints East of SMO VOR, July – December 2015



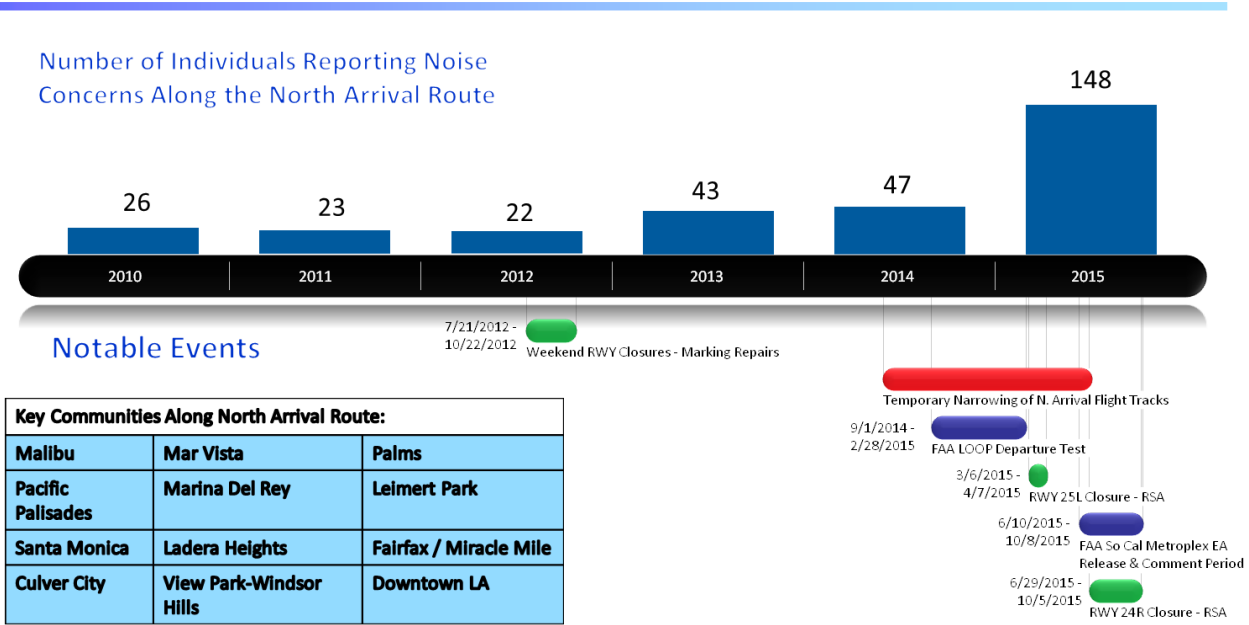
Complainant Data:
July – December 2015

Flight Track Data:
October 2015

● Complainant Location

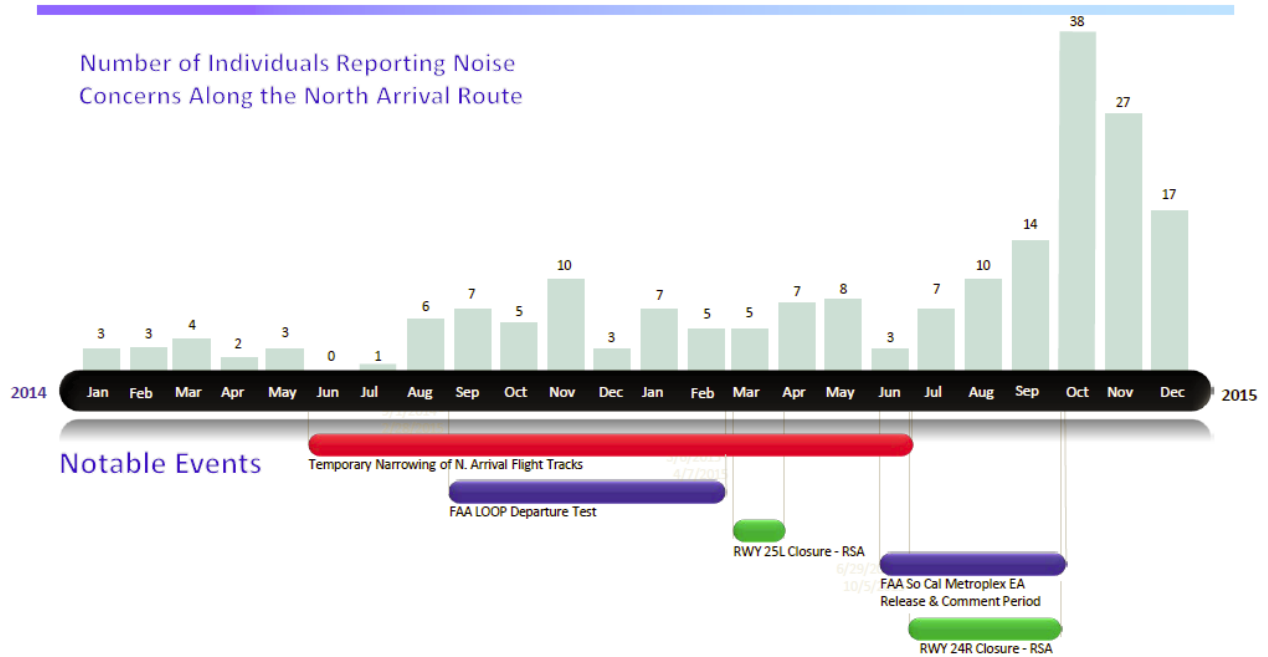
Source: LAWA, HMMH 2016

Figure 9. Complaint Timeline, 2010 – 2015



Source: LAWA ANOMS Data

Figure 10. Complaint Timeline, 2014 – 2015



Source: LAWA ANOMS Data