

Welcome...



2017 Annual Storm Water Pollution Prevention Plan Training

Agenda

- **Introductions**
- **Review: Storm Water Pollution Prevention Plan (SWPPP)**
- **Objective & Goals**
- **Facility Status at LAX (ERA Level 1 and 2)**
- **Requirement 1: Pollution Prevention Team**
- **Requirement 2: Dry Weather Observation Form**
- **Requirement 3: Spill & Incident Reporting Form**
- **Requirement 4: Site Maps**



Agenda

- **Requirement 5: Chemical Inventory Form**
- **Best Management Practices (BMPs)**
- **Consequences of Non-Compliance**
- **Summary**
- **Resources**
- **Q&A**



Your LAWA Stormwater Team

4

Storm Water Group

- Lisa Dugas – Environmental Affairs Officer
– 424-646-6485 ldugas@lawa.org
- Somvang Meksavanh – Environmental Specialist
– 424-646-6492 smeksavanh@lawa.org
- Kevin Jontz – Environmental Specialist
– 424-646-9044 kjontz@lawa.org



Your LAWA Stormwater Team ⁵

- LAWA Storm Water Program Page

– [https://www.lawa.org/
welcome_lawa.aspx?id
=1864](https://www.lawa.org/welcome_lawa.aspx?id=1864)



Clean Water Act

- 1972, 33 U.S.C. § 1251-1387
- The primary federal statute that addresses water pollution in the United States.
- § 301 has prohibited against “the discharge of any pollutant by any person”.
- “Discharge of Pollutants” Definition
 - “any addition of any pollutant to navigable waters from any point source”



Clean Water Act

- **1987 Amendment: §402(p) to include storm water discharges associated with municipal, and industrial activities.**



Porter Cologne Act

- **CCR § 13000-16104**
- **Established the Basin Plan and subsequently, the Regional Water Quality Control Boards**
- **Mandates Water Quality Standards**





The NPDES Permit

10

- **Order 2014-0057-DWQ for Storm Water Discharges Associated with Industrial Activities**

Industrial General Permit Order
NATIONAL POLLUTANT DISCHARGE ELIMINATION SYSTEM (NPDES)
GENERAL PERMIT FOR
STORM WATER DISCHARGES
ASSOCIATED WITH INDUSTRIAL ACTIVITIES
ORDER
NPDES NO. CAS000001

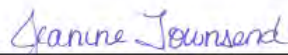
This Order was adopted by the State Water Resources Control Board on:	April 1, 2014
This Order shall become effective on:	July 1, 2015
This Order shall expire on:	June 30, 2020

IT IS HEREBY ORDERED that as of July 1, 2015 this Order supersedes Order 97-03-DWQ except for Order 97-03-DWQ's requirement to submit annual reports by July 1, 2015 and except for enforcement purposes. As of July 1, 2015, a Discharger shall comply with the requirements in this Order to meet the provisions contained in Division 7 of the California Water Code (commencing with section 13000) and regulations adopted thereunder, and the provisions of the federal Clean Water Act and regulations and guidelines adopted thereunder.

CERTIFICATION

I, Jeanine Townsend, Clerk to the Board, do hereby certify that this Order, including its fact sheet, attachments, and appendices is a full, true, and correct copy of an Order adopted by the State Water Resources Control Board, on April 1, 2014.

AYE: Chair Felicia Marcus
Vice Chair Frances Spivy-Weber
Board Member Tam M. Doduc
Board Member Steven Moore
NAY: None
ABSENT: Board Member Dorene D'Adamo
ABSTAIN: None


Jeanine Townsend
Clerk to the Board

Permit Requirements

- **Storm Water Pollution Prevention Plan (SWPPP)**
 - **Develop, Submit, Implement and Continuously Revise As Needed**
- **Create a Pollution Prevention Team**
- **Employee Training**
- **Maintain a Site Map**
- **Potential Pollutant Sources Assessment & Elimination**
- **Best Management Practices (BMPs)**
- **Track & Maintain Records**



Permit Requirements (SWPPP)¹²

Storm Water Pollution Prevention Plan (SWPPP) Associated with Industrial Activities

for

The Los Angeles International Airport



Facility Address:

1 World Way
Los Angeles, California 90045

Waste Discharge Identification (WDID):

4191004995

Exceedance Response Action (ERA) Status:

Baseline

Legally Responsible Person (LRP):

Los Angeles World Airports
1 World Way
Los Angeles, CA 90045
Robert Freeman
(424) 646-6474

SWPPP Preparation Date

Amended August 15, 2016

Storm Water Pollution Prevention Plan (SWPPP) Associated with Industrial Activities

for

Van Nuys Airport



Facility Address:

16461 Sherman Way
Van Nuys, California 91406

Waste Discharge Identification (WDID):

4 191004994

Exceedance Response Action (ERA) Status:

Baseline

Legally Responsible Person (LRP):

Los Angeles World Airports
1 World Way
Los Angeles, CA 90045
Robert Freeman
(424) 646-6474

Duly Authorized Representatives:

SWPPP Preparation Date

June 25, 2015

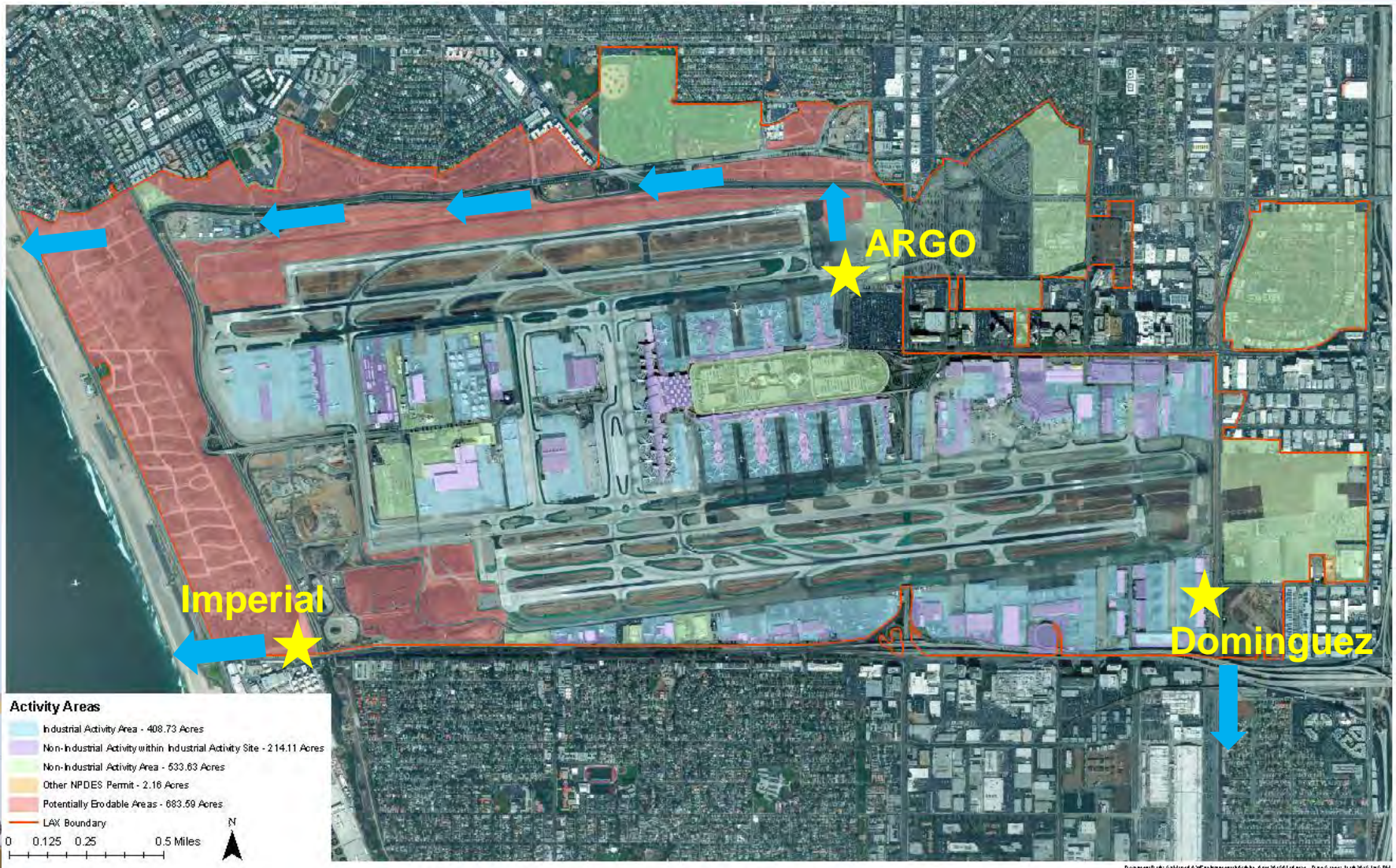
- LAWA Storm Water Program Page

– [https://www.lawa.org/
welcome_lawa.aspx?id
=1864](https://www.lawa.org/welcome_lawa.aspx?id=1864)



Site Map (Blue areas are Industrial)

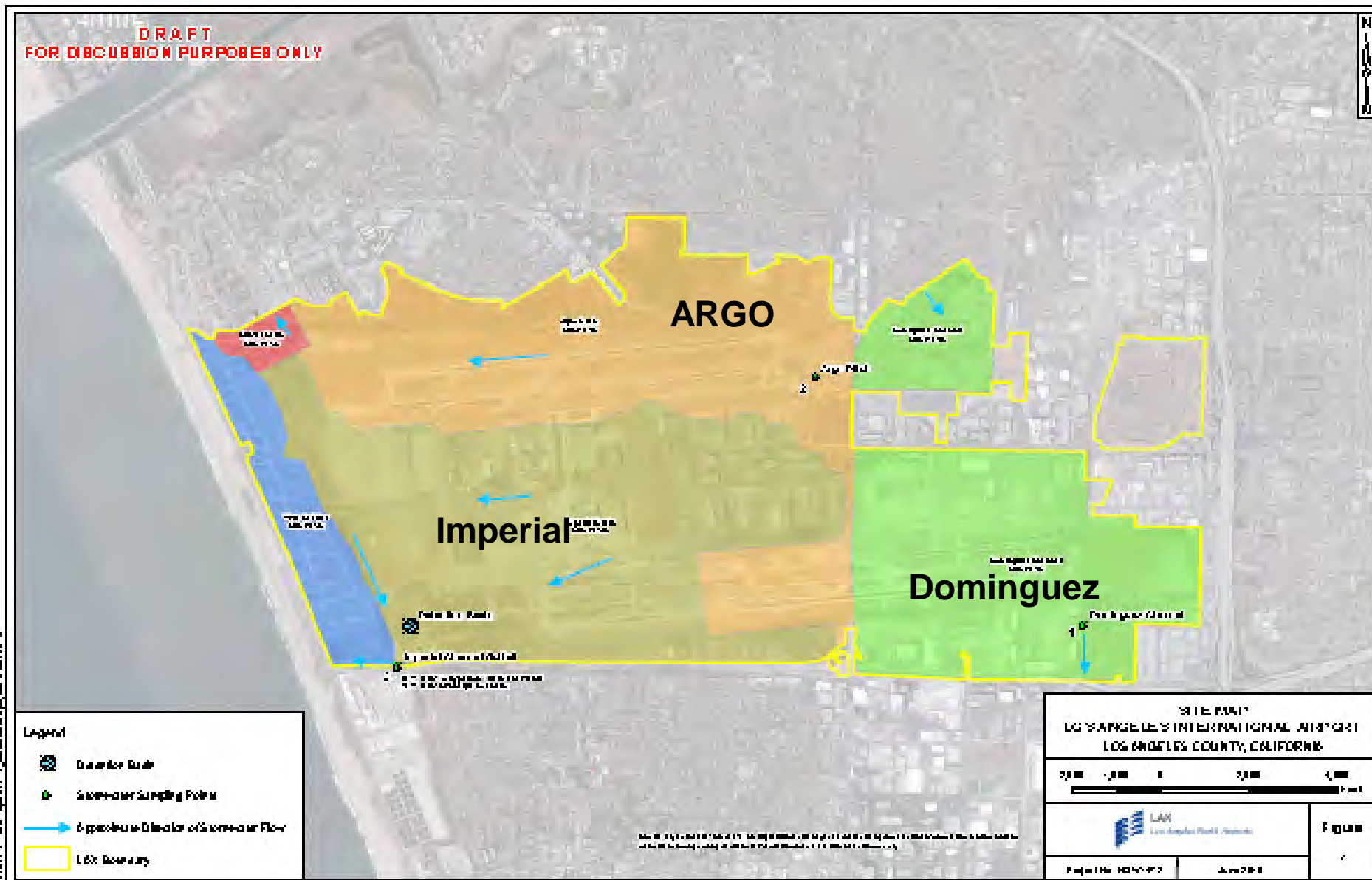
14



Document ID: 51446450767800000000000000000000 Date: 5/18/2015 10:54 PM

Site Map (Drainage Areas)

15



Level 1 Status

As of July 1, 2016 LAX has entered Level 1 Status for Aluminum and Copper

- The facility evaluation for exposure sources was completed September 22, 2016.**
- The ERA Level 1 Report was finalized and filed with the State on January 1, 2017.**
- Message: BMP implementation improvement is NEEDED across the facility!!!**



Level 1 Status – Headed for Level 2

17

On July 1, 2017 LAX will entered Level 2 Status for Aluminum and Copper

- **ERA Level 2 Action Plan to be developed**
- **Source Investigation Studies will begin targeting hot spots**
- **Message:**
 - **BMP implementation improvement is still NEEDED across the facility!**
 - **Training needs to be conveyed to the day to day operation staff!**



2016-17 Results Summary

Constituent	Numeric Action Level (NAL)	Units	2016-2017 Current Facility Annual Average	2015-2016 Historical Facility Annual Average
Aluminum, Total	0.75	mg/L	1.54	0.89
Copper, Total	0.0332	mg/L	0.0673	0.0728

Event Date	Copper (mg/L) (NAL=0.0332)		
	Argo	Dominguez	Imperial
11/21/2016	0.083	0.120	0.086
11/26/2016	0.120	0.093	0.054
1/19/2017	0.045	0.026	0.035
2/11/2017	0.071	0.044	0.030
Average	0.08	0.07	0.05

Grey shading is above NAL for individual event

Red shading is above NAL for Drainage Area

Event Date	Aluminum (mg/L) (NAL=0.75)		
	Argo	Dominguez	Imperial
11/21/2016	0.80	3.20	0.89
11/26/2016	0.81	2.70	0.96
1/19/2017	0.95	1.9	0.83
2/11/2017	1.40	3.50	0.54
Average	0.99	2.83	0.81

Grey shading is above NAL for individual event

Red shading is above NAL for Drainage Area

Potential Copper Sources

Parameter Exceeded	Potential Industrial Materials Generating Exceedance	Potential Industrial Processes and Activities Generating Pollutant Sources	Existing BMPs to Address the Sources
Copper	Anti-freeze Brake Fluids Diesel Engine Oil Fungicide Gasoline Motor Oil Waste Fuel Waste Oil Acids AV Gas Caustic Solution Fuel Additive H2O Treatment Chemicals Jet A Paint Pesticide Turbine Oil Waste Absorbent Waste Anti-freeze Waste Oil Filters Waste Solvents	Aircraft Deicing Aircraft Fueling Aircraft Maintenance Aircraft Painting/Stripping Aircraft Rental Aircraft Sanitary Services Aircraft Washing Catering/Food Service Cargo Handling Chemical Storage Equipment Degreasing/Washing Equipment Maintenance Equipment Storage Fuel Storage Floor Washdown Manufacturing (e.g., plating, metal grinding) Outdoor Apron Washdown Other Activity Pesticide/Herbicide Usage Steam Cleaning Vehicle Fueling Vehicle Maintenance Vehicle Painting/Stripping Vehicle Washing	<ul style="list-style-type: none"> • Training (SC10) • Minimum BMPs • Advanced BMPs (cover, SC6, SC7, and SC8) • Drainage Inlet Cleaning (SC9, SC44) • Imperial Retention Basin (TC22)

Potential Aluminum Sources

Parameter Exceeded	Potential Industrial Materials Generating Exceedance	Potential Industrial Processes and Activities Generating Pollutant Sources	Existing BMPs to Address the Sources
Aluminum	H2O Treatment Chemicals Fungicide Fertilizer Nutrient Waste Paint Acids Caustic Solution Fuel Additive Jet A Paint Pesticide Waste Anti-freeze Waste Solvents	Aircraft Deicing Aircraft Fueling Aircraft Maintenance Aircraft Painting/Stripping Aircraft Rental Aircraft Sanitary Services Aircraft Washing Catering/Food Service Cargo Handling (dragging Containers) Chemical Storage Equipment Degreasing/Washing Equipment Maintenance Equipment Storage (Aluminum Containers and Cart Parts) Fuel Storage Floor Washdown Manufacturing (e.g., plating, metal grinding) Outdoor Apron Washdown Other Activity Pesticide/Herbicide Usage Steam Cleaning Vehicle Fueling Vehicle Maintenance Vehicle Painting/Stripping Vehicle Washing Erosion and runoff of sediment and local soils	<ul style="list-style-type: none"> Erosion controls (SC40) Training (SC10) Minimum BMPs Advanced BMPs (cover) Drainage Inlet Cleaning (SC44) Imperial Retention Basin (TC22) Cleaning pavement cracks

Objectives for Today's Training²¹

**To know WHAT you need to do to comply with
the NPDES Industrial General Permit
and HOW to do it effectively.**



Video – A Drop in the Bucket

22



Goals for Today's Training

- **Requirement 1: Pollution Prevention Team**
- **Requirement 2: Monthly Dry Weather Observation Form**
- **Requirement 3: Report Spills & Incidents**
- **Requirement 4: Maintain Accurate Site Map**
- **Requirement 5: Chemical Inventory**
- **Requirement 6: Improve BMP Implementation**



Requirement 1: Pollution Prevention Team (PPT)



- **Two People**
 - **The Primary PPT Member**
 - Name, Title, Phone Number, Email
 - **The Alternate PPT Member**
 - Name, Title, Phone Number, Email
- **Must alert LAWA that a change has occurred so that our records are up to date for contacting the facilities!**



PPT Roles & Duties

- **Maintain an accurate Site Map**
- **Implement Best Management Practices (BMPs)**
- **Conduct Monthly Dry Weather Observations**
- **Potential Pollutant Sources**
 - Update Chemical Inventory
 - Report Spills & Incidents
 - Document Non- Storm Water Discharges (NSWDs)
- **Employee Training**

Requirement 2: Monthly Dry Weather Observation



Monthly Dry Weather Observation²⁸



MONTH AND YEAR _____

Monthly Dry Weather Visual Observation Form

(Form due by the 5th of the month following the observation month; submit to stormwater@lawa.org)

Facility Name:	LAWA Follow-up Requested? <input type="checkbox"/>		
Facility Address:			
Observer Name:	PPT <input type="checkbox"/> or Alternate <input type="checkbox"/>	Phone/email:	
Signature:	Change in PPT or Alternate? Yes <input type="checkbox"/>	Observation Date/Time:	

Are all impervious surfaces assessed regularly for spills, stains and other debris? Yes ☐ or No ☐

Has there been a change in Onsite Chemical Inventory? Yes ☐ or No ☐ (If Yes, complete and include Stored Material Checklist)

Has a spill occurred since the previous observation? Yes ☐ or No ☐

Was a Spill/Incident Report Form submitted? Yes ☐ or No ☐ (If "no", complete and include Spill/Incident Report Form)

Is Facility Map up to date? Yes ☐ No ☐; Is Spill Response Plan up to date? No ☐ or Yes ☐

Part I. Non-Storm Water Discharge (NSWD) Observations. (Check All Applicable)

Discharge Type	A. Discharge Observed?	B. Evidence of prior/ current/ potential source of NSWD and/or source? (Y/N)	C. Discharge occurred in the facility? (Y/N)	D. Describe Pollutant Characteristics (Check If Present)					E. BMPs in Place? (Y/N)	F. Dates of Discharge, BMPs Utilized, Describe Discharge Observation. Include supplemental photos if applicable.
				Sheen	Turbidity	Floating Material	Odor	Other		
AUTHORIZED	Fire Hydrant									
	Flushing									
	Potable Water									
	Sources									
	Drinking Fountain									
UNAUTHORIZED	Water									
	Atmospheric									
	Condensates									
	Irrigation Drainage/ Landscape									
	Others									
UNAUTHORIZED	Rinse/Wash Water									
	Improperly Disposed/ Dumped									
	Spilled Material									
	Leaked Material									
	Illicit Connection									
UNAUTHORIZED	Possible Illicit Connection									
	Food Waste									
	Other									

Comments and Observations:

Monthly Dry Weather Observation²⁹

- Facility Information

Monthly Dry Weather Visual Observation Form

(Form due by the 5th of the month following the observation month; submit to stormwater@lawa.org)

Facility Name:				LAWA Follow-up Requested? <input type="checkbox"/>
Facility Address:				
Observer Name:	PPT <input type="checkbox"/> or Alternate <input type="checkbox"/>	Phone/email:		
Signature:	Change in PPT or Alternate? Yes <input type="checkbox"/>	Observation Date/Time:		



Monthly Dry Weather Observation³⁰

- General Compliance Questions

Are all impervious surfaces assessed regularly for spills, stains and other debris? Yes ☐ or No ☐

Has there been a change in Onsite Chemical Inventory? Yes ☐ or No ☐ (If Yes, complete and include Stored Material Checklist)

Has a spill occurred since the previous observation? Yes ☐ or No ☐

Was a Spill/Incident Report Form submitted? Yes ☐ or No ☐ (If "no", complete and include Spill/Incident Report Form)

Is Facility Map up to date? Yes ☐ No ☐; Is Spill Response Plan up to date? No ☐ or Yes ☐



Monthly Dry Weather Observation³¹

- **Non-Storm Water Discharge (NSWD)**
 - **Authorized**

Part I. Non-Storm Water Discharge (NSWD) Observations. (Check All Applicable)										
Discharge Type	A. Discharge Observed?	B. Evidence of prior/ current/ potential/ source of NSWD and/or source? (Y/N)	C. Discharge occurred in the facility? (Y/N)	D. Describe Pollutant Characteristics (Check If Present)					E. BMPs In Place? (Y/N)	F. Dates of Discharge, BMPs Utilized, Describe Discharge Observation. Include supplemental photos if applicable.
				Sheen	Turbidity	Floating Material	Odor	Other		
AUTHORIZED	Fire Hydrant Flushing									
	Potable Water Sources									
	Drinking Fountain Water									
	Atmospheric Condensates									
	Irrigation Drainage/ Landscape									
	Others									

Monthly Dry Weather Observation³²

- **Non-Storm Water Discharge (NSWD)**
 - **Unauthorized**

Discharge Type	A. Discharge Observed?	B. Evidence of prior/ current/ potential/ source of NSWD and/or source? (Y/N)	C. Discharge occured in the facility? (Y/N)	D. Describe Pollutant Characteristics (Check If Present)					E. BMPs In Place? (Y/N)	F. Dates of Discharge, BMPs Utilized, Describe Discharge Observation. Include supplemental photos if applicable.
				Sheen	Turbidity	Floating Material	Odor	Other		
UNAUTHORIZED	Rinse/Wash Water									
	Improperly Disposed/									
	Spilled Material									
	Leaked Material									
	Illicit Connection									
	Possible Illicit Connection									
	Food Waste									
	Other									

Monthly Dry Weather Observation³³

- **Comments and Observation**

Comments and Observations



(Form due by the 5th of the month following the observation month; submit to stormwater@iawa.org)

Are all Impervious surfaces assessed regularly for spills, stains and other debris? Yes ☒ or No ☐
Has there been a change in Onsite Chemical Inventory? Yes ☐ or No ☒ (If Yes, complete and include Stored Material Checklist)
Has a spill occurred since the previous observation? Yes ☐ or No ☐ *unknown*
Was a Spill/Incident Report Form submitted? Yes ☐ or No ☐ (If "no", complete and include Spill/Incident Report Form)
Is Facility Map up to date? Yes ☒ No ☐; Is Spill Response Plan up to date? No ☐ or Yes ☒

[illegible]

Comments and Observations

Monthly Dry Weather Observation³⁵

- Best Management Practices

Part II BMP Observation, Implementation, Deficiencies and Corrective Action:									
Description of BMPs (Reference BMP Fact Sheet Number); SWPPP Table 4.1 shows summary of the BMPs for each airport (List below show BMPs implemented at LAWA and may not be airport specific.)	A. Facility BMPs (Check All Applicable); Previously reported BMPs are located in Table 4.2 of the SWPPP	B. Change in BMP use on facility? New or Eliminated Use	C. Implementation Location (Check all Applicable)				D. Implementation Frequency Routine (Describe: Daily, Weekly, Monthly, Others, or As Needed)	E. BMP Deficient? Yes (describe in "Comments") or No or Not Applicable - NA	F. BMP Comments: (Corrective Actions); Attach Any Supporting Photos (including description)
			Outdoor Industrial Areas	Outdoor Equipment and Storage Areas	Chemical Storage Areas	Others (Describe all other potential source of industrial pollutants)			
Elimination of NSWD (LAWA SC1); Direct Connection									
Aircraft, Ground Vehicle, and Equipment Maintenance (LAWA SC2)									
Aircraft, Vehicle and Equipment Fueling (LAWA SC3)									
Aircraft, Vehicle and Equipment Washing (SC4)									
Aircraft Deicing (SC5)									
Outdoor Material Handling (SC6)									
Outdoor Storage of Significant Material (SC7); Storage Tanks and Uncovered Outdoor Storage									
Waste Handling and Disposal (SC8); Housekeeping and Uncovered Dumpsters									
Building and Grounds Maintenance (SC9); Housekeeping									
Storm Water Pollution Prevention (SC10); Employee awareness training and recordkeeping Education									
Literary Service Operations (SC11)									
Outdoor Washdown/Sweeping (SC12); Stains on pavement/concrete									
Fire Fighting Foam Discharge (SC13)									
Portable Water System Flushing (SC14)									
Runway Rubber Removal (SC15)									
Oil Water Separators (LAWA TC1)									
Emergency Spill Cleanup Plan (LAWA SR1); Spill kit and Plan Posted									
Contaminated or Erodible Surfaces (CASQA SC-40)									
Drainage System Maintenance (CASQA SC-44)									
Wet Pond (CASQA - TC-20)									
Extended Detention Basin (CASQA TC-22)									
Media Filter (CASQA TC-40)									
Gravity Separator (CASQA MP-61)									

Monthly Dry Weather Observation³⁶

• Best Management Practices

Description of BMPs (Reference BMP Fact Sheet Number); SWPPP Table 4.1 shows summary of the BMPs for each airport (List below shows BMPs implemented at LAWA and may not be airport specific.)	Description of BMPs (Reference BMP Fact Sheet Number); SWPPP Table 4.1 shows summary of the BMPs for each airport (List below shows BMPs implemented at LAWA and may not be airport specific.)	Description of BMPs (Reference BMP Fact Sheet Number); SWPPP Table 4.1 shows summary of the BMPs for each airport (List below shows BMPs implemented at LAWA and may not be airport specific.)
Elimination of NSWD (LAWA SC1); Illicit Connection	Building and Grounds Maintenance (SC9); Housekeeping	Emergency Spill Cleanup Plan (LAWA SR1); Spill kits and Plan Posted
Aircraft, Ground Vehicle, and Equipment Maintenance (LAWA SC2)	Storm Water Pollution Prevention (SC10); Employee awareness training and recordkeeping	Contaminated or Erodible Surfaces (CASQA SC-40)
Aircraft, Vehicle and Equipment Fueling (LAWA SC3)	Education	Drainage System Maintenance (CASQA SC- 44)
Aircraft, Vehicle and Equipment Washing (SC4)	Lavatory Service Operations (SC11)	Wet Pond (CASQA - TC-20)
Aircraft Deicing (SC5)	Outdoor Washdown/Sweeping (SC12); Stains on pavement/concrete	Extended Detention Basin (CASQA TC-22)
Outdoor Material Handling (SC6)	Fire Fighting Foam Discharge (SC13)	Media Filter (CASQA TC- 40)
Outdoor Storage of Significant Material (SC7); Storage Tanks and Uncovered Outdoor Storage	Potable Water System Flushing (SC14)	Gravity Separator (CASQA MP-51)
Waste Handling and Disposal (SC8); Housekeeping and Uncovered Dumpsters	Runway Rubber Removal (SC15) Oil/Water Separators (LAWA TC1)	

Monthly Dry Weather Observation³⁷



LAX

Los Angeles World Airports

Rules and Regulations

LOS ANGELES WORLD AIRPORTS

SC1

ELIMINATION OF NON-STORM WATER DISCHARGES TO STORM DRAINS

PURPOSE:

Existing discharges: Eliminate non-storm water discharges to the storm water collection system. Non-storm water discharges can be classified as follows: 1) *Activity-based* (subtle), and 2) *Overt* (hard pipe connection). Activity-based non-storm water discharges may include: wash water, deicing fluids, and spillage. Overt non-storm water discharges may include: process wastewater, treated cooling water, and sanitary wastewater.

Prevention of illicit connections: Prevent improper physical connections to the storm drain system from sanitary sewers, floor drains, industrial process discharge lines, and wash racks through education, developing project approval conditions, and performing both construction phase and post-construction inspections.

GENERAL APPROACH:

Identification of Activity-Based (Subtle) Discharges:

The following techniques may be used to identify activity-based non-storm water discharges to the storm water collection system:

- Perform frequent activity inspections to identify non-storm water discharges -

TARGETED ACTIVITIES

All Maintenance
All Fueling
All Washing
Equipment Cleaning
Cargo Handling
All Storage
Painting/Stripping
Floor Washdowns
Aircraft Deicing/Anti-Icing
Garbage Collection
Aircraft Lavatory Service
Fire Fighting Equip. Testing
Potable Water System Flush
Runway Rubber Removal

TARGETED POLLUTANTS

Oil and Grease
Vehicle Fluids
Fuel
Solvents/Cleaning Sol.
Deicing/Anti-Icing Fluid



Los Angeles
World Airports

Monthly Dry Weather Observation³⁸

Description of BMPs (Reference BMP Fact Sheet Number); SWPPP Table 4.1 shows summary of the BMPs for each airport (List below shows BMPs implemented at LAWA and may not be airport specific.)	A. Facility BMPs (Check All Applicable); Previously reported BMPs are located in Table 4.2 of the SWPPP	B. Change in BMP use on facility? <u>New</u> or <u>Eliminated</u> Use	C. Implementation Location (Check all Applicable)				D. Implementation Frequency Routine (Describe: <u>D</u> aily, <u>W</u> eekly, <u>M</u> onthly, <u>O</u> thers, or <u>A</u> s Needed)	E. BMP Deficient? <u>Y</u> es (describe in "Comments") or <u>N</u> o or Not Applicable - <u>NA</u>	F. BMP Comments (Corrective Actions); Attach Any Supporting Photos (including description)
			Outdoor Industrial Activities Areas	Outdoor Industrial Equipment and Storage Areas	Chemical Storage Areas	Others (Describe all other potential source of industrial pollutants)			
Elimination of NSWDC (LAWA SC1); Illicit Connection									



Monthly Dry Weather Observation³⁹

Description of BMPs (Reference BMP Fact Sheet Number); SWPPP Table 4.1 shows summary of the BMPs for each airport (List below shows BMPs implemented at LAWA and may not be airport specific.)	A. Facility BMPs (Check All Applicable); Previously reported BMPs are located in Table 4.2 of the SWPPP	B. Change in BMP use on facility? <u>N</u>ew or <u>E</u>liminated Use
Elimination of NSWD (LAWA SC1); <u>Illicit Connection</u>		

Monthly Dry Weather Observation⁴⁰

Description of BMPs (Reference BMP Fact Sheet Number); SWPPP Table 4.1 shows summary of the BMPs for each airport (List below shows BMPs implemented at LAWA and may not be airport specific.)	C. Implementation Location (Check all Applicable)			
	Outdoor Industrial Activities Areas	Outdoor Industrial Equipment and Storage Areas	Chemical Storage Areas	Others (Describe all other potential source of industrial pollutants)
Elimination of NSWD (LAWA SC1); Illicit Connection				



Monthly Dry Weather Observation⁴¹

<p>Description of BMPs (Reference BMP Fact Sheet Number); SWPPP Table 4.1 shows summary of the BMPs for each airport (List below shows BMPs implemented at LAWA and may not be airport specific.)</p>	<p>D. Implementatio n Frequency</p>	<p>E. BMP Deficient?</p>	<p>F. BMP Comments (Corrective Actions); Attach Any Supporting Photos (including description)</p>
<p>Elimination of NSW D (LAWA SC1); Illicit Connection</p>	<p>Routine (Describe: <u>D</u>aily, <u>W</u>eekly, <u>M</u>onthly, <u>O</u>thers, or <u>A</u>s Needed)</p>	<p><u>Y</u>es (describe in "Comments") or <u>N</u>o or Not Applicable - <u>NA</u></p>	

Monthly Dry Weather Observation⁴²

Email to

stormwater@lawa.org

On the 5th
of the following month



Completed

Page 2

Part II BMP Observation, Implementation, Deficiencies and Corrective Actions

Description of BMPs (Reference BMP Fact Sheet Number); SWPPP Table 4.1 shows summary of the BMPs for each airport (List below shows BMPs implemented at LAWA and may not be airport specific.)	A. Facility BMPs (Check All Applicable); Previously reported BMPs are located in Table 4.2 of the SWPPP	B. Change in BMP use on facility? New or Eliminated Use	C. Implementation Location (Check all Applicable)				D. Implementation Frequency Routine (Describe: Daily, Weekly, Monthly, Others, or As Needed)	E. BMP Deficient? Yes (describe in "Comments") or No or Not Applicable - NA	F. BMP Comments (Corrective Actions); Attach Any Supporting Photos (including description)
			Outdoor Industrial Activities Areas	Outdoor Industrial Equipment and Storage Areas	Chemical Storage Areas	Others (Describe all other potential source of industrial pollutants)			
Elimination of NSWD (LAWA SC1); Illicit Connection	Y		Y				D	N	
Aircraft, Ground Vehicle, and Equipment Maintenance (LAWA SC2)	Y		Y				A	N	
Aircraft, Vehicle and Equipment Fueling (LAWA SC3)	Y		Y				A	N	
Aircraft, Vehicle and Equipment Washing (SC4)	N								
Aircraft Deicing (SC5)	N								
Outdoor Material Handling (SC6)	Y		Y				A	N	
Outdoor Storage of Significant Material (SC7); Storage Tanks and Uncovered Outdoor Storage	N								
Waste Handling and Disposal (SC8); Housekeeping and Uncovered Dumpsters	Y		Y	Y			D	N	
Building and Grounds Maintenance (SC9); Housekeeping	Y		Y	Y			W	N	
Storm Water Pollution Prevention (SC10); Employee awareness training and recordkeeping Education	Y						A	N	
Lavatory Service Operations (SC11)	Y		Y				A	N	
Outdoor Washdown/Sweeping (SC12); Stains on pavement/concrete	Y		Y				M	N	
Fire Fighting Foam Discharge (SC13)	N								
Potable Water System Flushing (SC14)	N								
Runway Rubber Removal (SC15)	N								
Oil/Water Separators (LAWA TC1)	N								
Emergency Spill Cleanup Plan (LAWA SRI); Spill kits and Plan Posted	Y							N	
Contaminated or Erodible Surfaces (CASQA SC-40)	N								
Drainage System Maintenance (CASQA SC- 44)	N								
Wet Pond (CASQA - TC-20)	N								
Extended Detention Basin (CASQA TC-22)	N								
Media Filter (CASQA TC- 40)	N								
Gravity Separator (CASQA MP-S1)	N								

Requirement 3: Spills & Incident Reporting




Spills & Incidents

- **Prevent Spills**
 - SOPs
 - BMPs
 - Training
- **Clean Up Immediately**
 - **Small Spills:** Train Employees in spill and leak response
 - **Larger Spills:** Report to ARCC, Ops or LAFD
- **Report to Proper Authority/Agency**



Spills & Incidents

46

 **LAX**
Los Angeles World Airports

SPILL/INCIDENT REPORT FORM

NOTIFY ARCC ASAP @ (424) 646-LAWA WHEN SPILL ENTERS STORM DRAIN
SUBMIT FORM TO STORMWATER@LAWA.ORG NO LATER THAN 24 HOURS AFTER SPILL OCCURRED

Report: Spills over 1 gal in volume (1 gallon could cover more than 60 square feet)
Any product enters into a storm drain.
Any spill that you are not sure whether it is reportable or not.
Any size spill that has a regulatory requirement to be reported.

IF ANY INFORMATION IS UNKNOWN, LEAVE BLANK FOR LAWLA FOLLOW-UP.

Person Reporting		Date of Report:	
Name:		Phone:	
Company:		Email:	
Date of Incident:		Material(s) Spilled/Discharged (i.e. Jet-A, gas, etc.):	
Time of Incident:		Quantity Spilled (gal):	
Weather Conditions:			
Location of Spill (photo document):		Extent of Spill (Square Feet) (photo document):	
Leaseholder Company Name:			
Leaseholder's Representative Name:			
Phone:		Email:	
Company Responsible for Spill/Incident:			
Company Contact Person:			
Phone:		Email:	
Person In Charge of Clean Up			
Name:		Phone:	
Company:			
Quantity Contained:	Containment Method(s):		Quantity Recovered:
Did Discharge Leave Lease Boundary?	Spill Area:	Storm Drain(s) Impacted?	Soil Impacted?
<input type="checkbox"/> Yes	<input type="checkbox"/> Indoor	<input type="checkbox"/> Yes	<input type="checkbox"/> Yes
<input type="checkbox"/> No	<input type="checkbox"/> Outside	<input type="checkbox"/> No	<input type="checkbox"/> No
<input type="checkbox"/> No	<input type="checkbox"/> Outside Covered		
Immediate Actions Taken:		Spill Characteristics (i.e. Phys/Chem):	
<input type="checkbox"/> Containment	<input type="checkbox"/> Evacuation	<input type="checkbox"/> System Shutdown	
<input type="checkbox"/> Foam Retardant	<input type="checkbox"/> Neutralization	<input type="checkbox"/> Other _____	
Source of Spill (Ex. Pipeline, Vehicle, Aircraft, Etc):			
Cause of Spill or Factors Contributing to Release:		Disposal Method of Recovered Material:	
<input type="checkbox"/> Equipment Failure	<input type="checkbox"/> Training Deficiencies		
<input type="checkbox"/> Operator Error	<input type="checkbox"/> Weather Conditions		
<input type="checkbox"/> Faulty Process Design	<input type="checkbox"/> Other _____		
ARCC Notified?	Fire Dept Notified?	LAWLA Environmental Notified?	
<input type="checkbox"/> Yes	<input type="checkbox"/> Yes	<input type="checkbox"/> Yes Who: _____	
<input type="checkbox"/> No	<input type="checkbox"/> No	<input type="checkbox"/> No When: _____	
Actions Taken to Prevent Re-Occurrence:			
FOR ELUP USE ONLY:			
Discharged from SW Conveyance System?			
<input type="checkbox"/> Toxic Materials ID'ed in 40 CFR §302? Name: _____			
<input type="checkbox"/> Oil & Haz Subst Exceeding RIQ (40 CFR §§ 110, 117, & 302)? Name: _____			
<input type="checkbox"/> Approx QTY of material discharged from SW conveyance. _____			
<input type="checkbox"/> Manifest # _____			

Spills & Incidents

47

NOTIFY ARCC ASAP @ (424) 646-LAWA WHEN SPILL ENTERS STORM DRAIN

SUBMIT FORM TO STORMWATER@LAWA.ORG NO LATER THAN 24 HOURS AFTER SPILL OCCURRED

Report:

- Spills over 1 gal in volume (1 gallon could cover more than 60 square feet).
- Any product enters into a storm drain.
- Any spill that you are not sure whether it is reportable or not.
- Any size spill that has a regulatory requirement to be reported.

IF ANY INFORMATION IS UNKNOWN, LEAVE BLANK FOR LAWA FOLLOW-UP.



Spills & Incidents

48

Email to

stormwater@lawa.org



Spills & Incidents

- Report anything over 1 gallon
- Anytime something enters the Storm Drain
- Any size spill that has a regulatory requirement to be reported.

When in doubt, SUBMIT Form.



Spills & Incidents

50

Person Reporting		Date of Report:	
Name:	Company:	Phone:	Email:
Date of Incident:	Material(s) Spilled/Discharged (i.e. Jet-A, gas, etc.):		Quantity Spilled (gal):
Time of incident:			
Weather Conditions:			
Location of Spill (photo document):		Extent of Spill (Square Feet) (photo document):	



Spills & Incidents

51

Leaseholder Company Name:	
Leaseholder's Representative Name:	
Phone:	Email:
Company Responsible for Spill/Incident:	
Company Contact Person:	
Phone:	Email:



Spills & Incidents

52

Person In Charge of Clean Up		
Name:	Company:	Phone:
Quantity Contained:	Containment Method(s):	Quantity Recovered:



Spills & Incidents

53

Quantity Contained:	Containment Method(s):		Quantity Recovered:
Did Discharge Leave Lease Boundary? <input type="checkbox"/> Yes <input type="checkbox"/> No	Spill Area: <input type="checkbox"/> Indoor <input type="checkbox"/> Outside <input type="checkbox"/> Outside Covered	Storm Drain(s) Impacted? <input type="checkbox"/> Yes <input type="checkbox"/> No	Soil Impacted? <input type="checkbox"/> Yes <input type="checkbox"/> No
Immediate Actions Taken: <input type="checkbox"/> Containment <input type="checkbox"/> Foam Retardant <input type="checkbox"/> Evacuation <input type="checkbox"/> Neutralization <input type="checkbox"/> System Shutdown <input type="checkbox"/> Other _____			Spill Characteristics (i.e. Phys/Chem):



Spills & Incidents

54

Source of Spill (Ex. Pipeline, Vehicle, Aircraft, Etc):

Cause of Spill or Factors Contributing to Release:

- | | |
|--|--|
| <input type="checkbox"/> Equipment Failure | <input type="checkbox"/> Training Deficiencies |
| <input type="checkbox"/> Operator Error | <input type="checkbox"/> Weather Conditions |
| <input type="checkbox"/> Faulty Process Design | <input type="checkbox"/> Other _____ |

Disposal Method of Recovered Material:



Spills & Incidents

55

ARCC Notified?	Fire Dept Notified?	LAWA Environmental Notified?
<input type="checkbox"/> Yes	<input type="checkbox"/> Yes	<input type="checkbox"/> Yes Who: _____
<input type="checkbox"/> No	<input type="checkbox"/> No	When: _____
		<input type="checkbox"/> No



Spills & Incidents

56

Actions Taken to Prevent Re-Occurrence:



Spills & Incidents

57

FOR ELUP USE ONLY:

Discharged from SW Conveyance System? _____

- ☐ Toxic Materials ID'ed in 40 CFR §302? Name: _____
- ☐ Oil & Haz Subst Exceeding RQ (40 CFR §§ 110, 117, & 302)? Name: _____
- ☐ Approx QTY of material discharged from SW conveyance. _____
- ☐ Manifest # _____

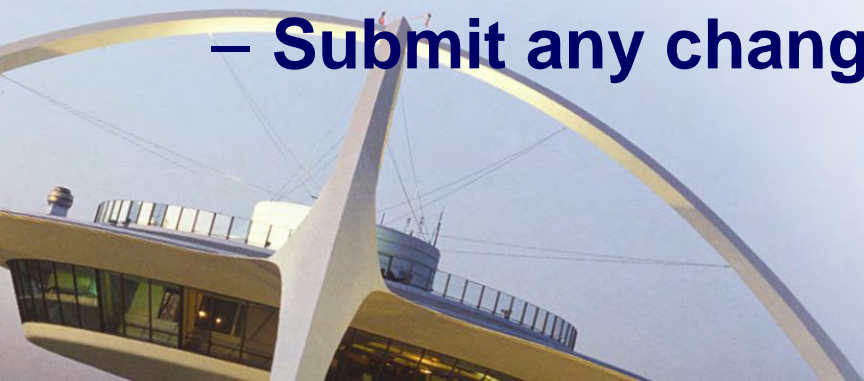


Requirement 4: Site Map



Site Map

- LAWA has prepared one for you already.
- **Must Include**
 - Business Name
 - Address
 - Legends
 - North Arrow
- It is now your responsibility to keep it up to date with any changes to YOUR facility.
 - Submit any changes to stormwater@lawa.org



Site Map

Info to Include:

- **Boundaries**
- **Drainage Areas**
- **Flow direction**
- **Water Bodies**
- **Storm Drain Inlets**
- **Storm Water Collection & Conveyance Systems**
- **Structural Control**
- **Impervious Areas**
- **Exposed Materials**
- **Sites of Past Spills**
- **Areas of Industrial Activity**



Simple Facility Site Map

61



Note 1: Aircraft fueling and sanitary services occur at various locations within facility boundaries













SWPPP Site Map

LAWA LAX

LAWA Imperial Terminal

6661 W Imperial Hwy

Los Angeles, CA 90045

-  Facility Boundary
-  Rain Flow
-  Outdoor Fueling Area
-  Outdoor Trash Storage
-  Outdoor Equipment Storage
-  Hazardous Storage Areas
-  Area Drains
-  Non-Industrial Area
-  Clarifier
-  Triturator
-  Outdoor Washing Area
-  Non-impervious Areas

More Complex Facility Site Map



SWPPP Site Map

LAWA LAX

USCG Air Station Los Angeles
7159 World Way West
Los Angeles, CA 90045

- Facility Boundary
- Rain Flow
- Outdoor Fueling Area
- Outdoor Trash Storage
- Outdoor Equipment Storage
- Outdoor Washing Area
- Outdoor Hazardous Storage Areas
- Clarifier
- Area Drains
- MS4 Inlet

Note 1: Air Station to be decommissioned in July 2016

Note 2: Area drains connect to the Storm Water Interceptor for sediment and oil & grease treatment before connecting to MS4 storm drain line.

Los Angeles World Airports
STORIED MATERIALS - BEST MANAGEMENT PRACTICES (BMP)
CHEMICAL INVENTORY

Tenant's Name: _____
Tenant's Address: _____

A. Used On-Site?		Chemical	Quantity/Units	B. Stored on Site?			C. Secondary Containment Present?			D. Contact with Discharges?		
Yes	No			Inside	Out Covered	Out Uncovered	Yes	No	N/A	Yes	No	N/A
<input type="checkbox"/>	<input type="checkbox"/>	Acids		<input type="checkbox"/>	<input type="checkbox"/>	<input type="checkbox"/>	<input type="checkbox"/>	<input type="checkbox"/>	<input type="checkbox"/>	<input type="checkbox"/>	<input type="checkbox"/>	<input type="checkbox"/>
<input type="checkbox"/>	<input type="checkbox"/>	Anti-freeze		<input type="checkbox"/>	<input type="checkbox"/>	<input type="checkbox"/>	<input type="checkbox"/>	<input type="checkbox"/>	<input type="checkbox"/>	<input type="checkbox"/>	<input type="checkbox"/>	<input type="checkbox"/>
<input type="checkbox"/>	<input type="checkbox"/>	Air Gas		<input type="checkbox"/>	<input type="checkbox"/>	<input type="checkbox"/>	<input type="checkbox"/>	<input type="checkbox"/>	<input type="checkbox"/>	<input type="checkbox"/>	<input type="checkbox"/>	<input type="checkbox"/>
<input type="checkbox"/>	<input type="checkbox"/>	Brake Fluids		<input type="checkbox"/>	<input type="checkbox"/>	<input type="checkbox"/>	<input type="checkbox"/>	<input type="checkbox"/>	<input type="checkbox"/>	<input type="checkbox"/>	<input type="checkbox"/>	<input type="checkbox"/>
<input type="checkbox"/>	<input type="checkbox"/>	Concrete Materials		<input type="checkbox"/>	<input type="checkbox"/>	<input type="checkbox"/>	<input type="checkbox"/>	<input type="checkbox"/>	<input type="checkbox"/>	<input type="checkbox"/>	<input type="checkbox"/>	<input type="checkbox"/>
<input type="checkbox"/>	<input type="checkbox"/>	Caustic Solution		<input type="checkbox"/>	<input type="checkbox"/>	<input type="checkbox"/>	<input type="checkbox"/>	<input type="checkbox"/>	<input type="checkbox"/>	<input type="checkbox"/>	<input type="checkbox"/>	<input type="checkbox"/>
<input type="checkbox"/>	<input type="checkbox"/>	Degreasers		<input type="checkbox"/>	<input type="checkbox"/>	<input type="checkbox"/>	<input type="checkbox"/>	<input type="checkbox"/>	<input type="checkbox"/>	<input type="checkbox"/>	<input type="checkbox"/>	<input type="checkbox"/>
<input type="checkbox"/>	<input type="checkbox"/>	Deodorizing Solution		<input type="checkbox"/>	<input type="checkbox"/>	<input type="checkbox"/>	<input type="checkbox"/>	<input type="checkbox"/>	<input type="checkbox"/>	<input type="checkbox"/>	<input type="checkbox"/>	<input type="checkbox"/>
<input type="checkbox"/>	<input type="checkbox"/>	Diesel		<input type="checkbox"/>	<input type="checkbox"/>	<input type="checkbox"/>	<input type="checkbox"/>	<input type="checkbox"/>	<input type="checkbox"/>	<input type="checkbox"/>	<input type="checkbox"/>	<input type="checkbox"/>
<input type="checkbox"/>	<input type="checkbox"/>	Engine Oil		<input type="checkbox"/>	<input type="checkbox"/>	<input type="checkbox"/>	<input type="checkbox"/>	<input type="checkbox"/>	<input type="checkbox"/>	<input type="checkbox"/>	<input type="checkbox"/>	<input type="checkbox"/>
<input type="checkbox"/>	<input type="checkbox"/>	Fertilizer		<input type="checkbox"/>	<input type="checkbox"/>	<input type="checkbox"/>	<input type="checkbox"/>	<input type="checkbox"/>	<input type="checkbox"/>	<input type="checkbox"/>	<input type="checkbox"/>	<input type="checkbox"/>
<input type="checkbox"/>	<input type="checkbox"/>	Foaming Agent (AFFF)		<input type="checkbox"/>	<input type="checkbox"/>	<input type="checkbox"/>	<input type="checkbox"/>	<input type="checkbox"/>	<input type="checkbox"/>	<input type="checkbox"/>	<input type="checkbox"/>	<input type="checkbox"/>
<input type="checkbox"/>	<input type="checkbox"/>	Freon		<input type="checkbox"/>	<input type="checkbox"/>	<input type="checkbox"/>	<input type="checkbox"/>	<input type="checkbox"/>	<input type="checkbox"/>	<input type="checkbox"/>	<input type="checkbox"/>	<input type="checkbox"/>
<input type="checkbox"/>	<input type="checkbox"/>	Fuel Additive		<input type="checkbox"/>	<input type="checkbox"/>	<input type="checkbox"/>	<input type="checkbox"/>	<input type="checkbox"/>	<input type="checkbox"/>	<input type="checkbox"/>	<input type="checkbox"/>	<input type="checkbox"/>
<input type="checkbox"/>	<input type="checkbox"/>	Fungicide		<input type="checkbox"/>	<input type="checkbox"/>	<input type="checkbox"/>	<input type="checkbox"/>	<input type="checkbox"/>	<input type="checkbox"/>	<input type="checkbox"/>	<input type="checkbox"/>	<input type="checkbox"/>
<input type="checkbox"/>	<input type="checkbox"/>	Gasoline		<input type="checkbox"/>	<input type="checkbox"/>	<input type="checkbox"/>	<input type="checkbox"/>	<input type="checkbox"/>	<input type="checkbox"/>	<input type="checkbox"/>	<input type="checkbox"/>	<input type="checkbox"/>
<input type="checkbox"/>	<input type="checkbox"/>	Grease		<input type="checkbox"/>	<input type="checkbox"/>	<input type="checkbox"/>	<input type="checkbox"/>	<input type="checkbox"/>	<input type="checkbox"/>	<input type="checkbox"/>	<input type="checkbox"/>	<input type="checkbox"/>
<input type="checkbox"/>	<input type="checkbox"/>	H2O Treatment Chemicals		<input type="checkbox"/>	<input type="checkbox"/>	<input type="checkbox"/>	<input type="checkbox"/>	<input type="checkbox"/>	<input type="checkbox"/>	<input type="checkbox"/>	<input type="checkbox"/>	<input type="checkbox"/>
<input type="checkbox"/>	<input type="checkbox"/>	Hydraulic Fluids		<input type="checkbox"/>	<input type="checkbox"/>	<input type="checkbox"/>	<input type="checkbox"/>	<input type="checkbox"/>	<input type="checkbox"/>	<input type="checkbox"/>	<input type="checkbox"/>	<input type="checkbox"/>
<input type="checkbox"/>	<input type="checkbox"/>	Isopropyl Alcohol		<input type="checkbox"/>	<input type="checkbox"/>	<input type="checkbox"/>	<input type="checkbox"/>	<input type="checkbox"/>	<input type="checkbox"/>	<input type="checkbox"/>	<input type="checkbox"/>	<input type="checkbox"/>
<input type="checkbox"/>	<input type="checkbox"/>	Jet A		<input type="checkbox"/>	<input type="checkbox"/>	<input type="checkbox"/>	<input type="checkbox"/>	<input type="checkbox"/>	<input type="checkbox"/>	<input type="checkbox"/>	<input type="checkbox"/>	<input type="checkbox"/>
<input type="checkbox"/>	<input type="checkbox"/>	Motor Oil		<input type="checkbox"/>	<input type="checkbox"/>	<input type="checkbox"/>	<input type="checkbox"/>	<input type="checkbox"/>	<input type="checkbox"/>	<input type="checkbox"/>	<input type="checkbox"/>	<input type="checkbox"/>
<input type="checkbox"/>	<input type="checkbox"/>	Nutrient		<input type="checkbox"/>	<input type="checkbox"/>	<input type="checkbox"/>	<input type="checkbox"/>	<input type="checkbox"/>	<input type="checkbox"/>	<input type="checkbox"/>	<input type="checkbox"/>	<input type="checkbox"/>
<input type="checkbox"/>	<input type="checkbox"/>	Oil Rags		<input type="checkbox"/>	<input type="checkbox"/>	<input type="checkbox"/>	<input type="checkbox"/>	<input type="checkbox"/>	<input type="checkbox"/>	<input type="checkbox"/>	<input type="checkbox"/>	<input type="checkbox"/>
<input type="checkbox"/>	<input type="checkbox"/>	Paint		<input type="checkbox"/>	<input type="checkbox"/>	<input type="checkbox"/>	<input type="checkbox"/>	<input type="checkbox"/>	<input type="checkbox"/>	<input type="checkbox"/>	<input type="checkbox"/>	<input type="checkbox"/>
<input type="checkbox"/>	<input type="checkbox"/>	Pesticide		<input type="checkbox"/>	<input type="checkbox"/>	<input type="checkbox"/>	<input type="checkbox"/>	<input type="checkbox"/>	<input type="checkbox"/>	<input type="checkbox"/>	<input type="checkbox"/>	<input type="checkbox"/>
<input type="checkbox"/>	<input type="checkbox"/>	Herbicide		<input type="checkbox"/>	<input type="checkbox"/>	<input type="checkbox"/>	<input type="checkbox"/>	<input type="checkbox"/>	<input type="checkbox"/>	<input type="checkbox"/>	<input type="checkbox"/>	<input type="checkbox"/>
<input type="checkbox"/>	<input type="checkbox"/>	Propylene Glycol (Deicing)		<input type="checkbox"/>	<input type="checkbox"/>	<input type="checkbox"/>	<input type="checkbox"/>	<input type="checkbox"/>	<input type="checkbox"/>	<input type="checkbox"/>	<input type="checkbox"/>	<input type="checkbox"/>
<input type="checkbox"/>	<input type="checkbox"/>	Soap		<input type="checkbox"/>	<input type="checkbox"/>	<input type="checkbox"/>	<input type="checkbox"/>	<input type="checkbox"/>	<input type="checkbox"/>	<input type="checkbox"/>	<input type="checkbox"/>	<input type="checkbox"/>
<input type="checkbox"/>	<input type="checkbox"/>	Solvents		<input type="checkbox"/>	<input type="checkbox"/>	<input type="checkbox"/>	<input type="checkbox"/>	<input type="checkbox"/>	<input type="checkbox"/>	<input type="checkbox"/>	<input type="checkbox"/>	<input type="checkbox"/>
<input type="checkbox"/>	<input type="checkbox"/>	Transmission Fluids		<input type="checkbox"/>	<input type="checkbox"/>	<input type="checkbox"/>	<input type="checkbox"/>	<input type="checkbox"/>	<input type="checkbox"/>	<input type="checkbox"/>	<input type="checkbox"/>	<input type="checkbox"/>
<input type="checkbox"/>	<input type="checkbox"/>	Turbine Oil		<input type="checkbox"/>	<input type="checkbox"/>	<input type="checkbox"/>	<input type="checkbox"/>	<input type="checkbox"/>	<input type="checkbox"/>	<input type="checkbox"/>	<input type="checkbox"/>	<input type="checkbox"/>
<input type="checkbox"/>	<input type="checkbox"/>	Waste Absorbent		<input type="checkbox"/>	<input type="checkbox"/>	<input type="checkbox"/>	<input type="checkbox"/>	<input type="checkbox"/>	<input type="checkbox"/>	<input type="checkbox"/>	<input type="checkbox"/>	<input type="checkbox"/>
<input type="checkbox"/>	<input type="checkbox"/>	Waste Anti-freeze		<input type="checkbox"/>	<input type="checkbox"/>	<input type="checkbox"/>	<input type="checkbox"/>	<input type="checkbox"/>	<input type="checkbox"/>	<input type="checkbox"/>	<input type="checkbox"/>	<input type="checkbox"/>
<input type="checkbox"/>	<input type="checkbox"/>	Waste Fuel		<input type="checkbox"/>	<input type="checkbox"/>	<input type="checkbox"/>	<input type="checkbox"/>	<input type="checkbox"/>	<input type="checkbox"/>	<input type="checkbox"/>	<input type="checkbox"/>	<input type="checkbox"/>
<input type="checkbox"/>	<input type="checkbox"/>	Waste Hydraulics		<input type="checkbox"/>	<input type="checkbox"/>	<input type="checkbox"/>	<input type="checkbox"/>	<input type="checkbox"/>	<input type="checkbox"/>	<input type="checkbox"/>	<input type="checkbox"/>	<input type="checkbox"/>
<input type="checkbox"/>	<input type="checkbox"/>	Waste Oil		<input type="checkbox"/>	<input type="checkbox"/>	<input type="checkbox"/>	<input type="checkbox"/>	<input type="checkbox"/>	<input type="checkbox"/>	<input type="checkbox"/>	<input type="checkbox"/>	<input type="checkbox"/>
<input type="checkbox"/>	<input type="checkbox"/>	Waste Oil Filters		<input type="checkbox"/>	<input type="checkbox"/>	<input type="checkbox"/>	<input type="checkbox"/>	<input type="checkbox"/>	<input type="checkbox"/>	<input type="checkbox"/>	<input type="checkbox"/>	<input type="checkbox"/>
<input type="checkbox"/>	<input type="checkbox"/>	Waste Paint		<input type="checkbox"/>	<input type="checkbox"/>	<input type="checkbox"/>	<input type="checkbox"/>	<input type="checkbox"/>	<input type="checkbox"/>	<input type="checkbox"/>	<input type="checkbox"/>	<input type="checkbox"/>
<input type="checkbox"/>	<input type="checkbox"/>	Waste Solvents		<input type="checkbox"/>	<input type="checkbox"/>	<input type="checkbox"/>	<input type="checkbox"/>	<input type="checkbox"/>	<input type="checkbox"/>	<input type="checkbox"/>	<input type="checkbox"/>	<input type="checkbox"/>
<input type="checkbox"/>	<input type="checkbox"/>	Other:		<input type="checkbox"/>	<input type="checkbox"/>	<input type="checkbox"/>	<input type="checkbox"/>	<input type="checkbox"/>	<input type="checkbox"/>	<input type="checkbox"/>	<input type="checkbox"/>	<input type="checkbox"/>
<input type="checkbox"/>	<input type="checkbox"/>	Other:		<input type="checkbox"/>	<input type="checkbox"/>	<input type="checkbox"/>	<input type="checkbox"/>	<input type="checkbox"/>	<input type="checkbox"/>	<input type="checkbox"/>	<input type="checkbox"/>	<input type="checkbox"/>
<input type="checkbox"/>	<input type="checkbox"/>	Other:		<input type="checkbox"/>	<input type="checkbox"/>	<input type="checkbox"/>	<input type="checkbox"/>	<input type="checkbox"/>	<input type="checkbox"/>	<input type="checkbox"/>	<input type="checkbox"/>	<input type="checkbox"/>
<input type="checkbox"/>	<input type="checkbox"/>	Other:		<input type="checkbox"/>	<input type="checkbox"/>	<input type="checkbox"/>	<input type="checkbox"/>	<input type="checkbox"/>	<input type="checkbox"/>	<input type="checkbox"/>	<input type="checkbox"/>	<input type="checkbox"/>
<input type="checkbox"/>	<input type="checkbox"/>	Other:		<input type="checkbox"/>	<input type="checkbox"/>	<input type="checkbox"/>	<input type="checkbox"/>	<input type="checkbox"/>	<input type="checkbox"/>	<input type="checkbox"/>	<input type="checkbox"/>	<input type="checkbox"/>
<input type="checkbox"/>	<input type="checkbox"/>	Other:		<input type="checkbox"/>	<input type="checkbox"/>	<input type="checkbox"/>	<input type="checkbox"/>	<input type="checkbox"/>	<input type="checkbox"/>	<input type="checkbox"/>	<input type="checkbox"/>	<input type="checkbox"/>
<input type="checkbox"/>	<input type="checkbox"/>	Other:		<input type="checkbox"/>	<input type="checkbox"/>	<input type="checkbox"/>	<input type="checkbox"/>	<input type="checkbox"/>	<input type="checkbox"/>	<input type="checkbox"/>	<input type="checkbox"/>	<input type="checkbox"/>
<input type="checkbox"/>	<input type="checkbox"/>	Other:		<input type="checkbox"/>	<input type="checkbox"/>	<input type="checkbox"/>	<input type="checkbox"/>	<input type="checkbox"/>	<input type="checkbox"/>	<input type="checkbox"/>	<input type="checkbox"/>	<input type="checkbox"/>
<input type="checkbox"/>	<input type="checkbox"/>	Other:		<input type="checkbox"/>	<input type="checkbox"/>	<input type="checkbox"/>	<input type="checkbox"/>	<input type="checkbox"/>	<input type="checkbox"/>	<input type="checkbox"/>	<input type="checkbox"/>	<input type="checkbox"/>
<input type="checkbox"/>	<input type="checkbox"/>	Other:		<input type="checkbox"/>	<input type="checkbox"/>	<input type="checkbox"/>	<input type="checkbox"/>	<input type="checkbox"/>	<input type="checkbox"/>	<input type="checkbox"/>	<input type="checkbox"/>	<input type="checkbox"/>
<input type="checkbox"/>	<input type="checkbox"/>	Other:		<input type="checkbox"/>	<input type="checkbox"/>	<input type="checkbox"/>	<input type="checkbox"/>	<input type="checkbox"/>	<input type="checkbox"/>	<input type="checkbox"/>	<input type="checkbox"/>	<input type="checkbox"/>
<input type="checkbox"/>	<input type="checkbox"/>	Other:		<input type="checkbox"/>	<input type="checkbox"/>	<input type="checkbox"/>	<input type="checkbox"/>	<input type="checkbox"/>	<input type="checkbox"/>	<input type="checkbox"/>	<input type="checkbox"/>	<input type="checkbox"/>
<input type="checkbox"/>	<input type="checkbox"/>	Other:		<input type="checkbox"/>	<input type="checkbox"/>	<input type="checkbox"/>	<input type="checkbox"/>	<input type="checkbox"/>	<input type="checkbox"/>	<input type="checkbox"/>	<input type="checkbox"/>	<input type="checkbox"/>
<input type="checkbox"/>	<input type="checkbox"/>	Other:		<input type="checkbox"/>	<input type="checkbox"/>	<input type="checkbox"/>	<input type="checkbox"/>	<input type="checkbox"/>	<input type="checkbox"/>	<input type="checkbox"/>	<input type="checkbox"/>	<input type="checkbox"/>
<input type="checkbox"/>	<input type="checkbox"/>	Other:		<input type="checkbox"/>	<input type="checkbox"/>	<input type="checkbox"/>	<input type="checkbox"/>	<input type="checkbox"/>	<input type="checkbox"/>	<input type="checkbox"/>	<input type="checkbox"/>	<input type="checkbox"/>
<input type="checkbox"/>	<input type="checkbox"/>	Other:		<input type="checkbox"/>	<input type="checkbox"/>	<input type="checkbox"/>	<input type="checkbox"/>	<input type="checkbox"/>	<input type="checkbox"/>	<input type="checkbox"/>	<input type="checkbox"/>	<input type="checkbox"/>
<input type="checkbox"/>	<input type="checkbox"/>	Other:		<input type="checkbox"/>	<input type="checkbox"/>	<input type="checkbox"/>	<input type="checkbox"/>	<input type="checkbox"/>	<input type="checkbox"/>	<input type="checkbox"/>	<input type="checkbox"/>	<input type="checkbox"/>
<input type="checkbox"/>	<input type="checkbox"/>	Other:		<input type="checkbox"/>	<input type="checkbox"/>	<input type="checkbox"/>	<input type="checkbox"/>	<input type="checkbox"/>	<input type="checkbox"/>	<input type="checkbox"/>	<input type="checkbox"/>	<input type="checkbox"/>
<input type="checkbox"/>	<input type="checkbox"/>	Other:		<input type="checkbox"/>	<input type="checkbox"/>	<input type="checkbox"/>	<input type="checkbox"/>	<input type="checkbox"/>	<input type="checkbox"/>	<input type="checkbox"/>	<input type="checkbox"/>	<input type="checkbox"/>
<input type="checkbox"/>	<input type="checkbox"/>	Other:		<input type="checkbox"/>	<input type="checkbox"/>	<input type="checkbox"/>	<input type="checkbox"/>	<input type="checkbox"/>	<input type="checkbox"/>	<input type="checkbox"/>	<input type="checkbox"/>	<input type="checkbox"/>
<input type="checkbox"/>	<input type="checkbox"/>	Other:		<input type="checkbox"/>	<input type="checkbox"/>	<input type="checkbox"/>	<input type="checkbox"/>	<input type="checkbox"/>	<input type="checkbox"/>	<input type="checkbox"/>	<input type="checkbox"/>	<input type="checkbox"/>
<input type="checkbox"/>	<input type="checkbox"/>	Other:		<input type="checkbox"/>	<input type="checkbox"/>	<input type="checkbox"/>	<input type="checkbox"/>	<input type="checkbox"/>	<input type="checkbox"/>	<input type="checkbox"/>	<input type="checkbox"/>	<input type="checkbox"/>
<input type="checkbox"/>	<input type="checkbox"/>	Other:		<input type="checkbox"/>	<input type="checkbox"/>	<input type="checkbox"/>	<input type="checkbox"/>	<input type="checkbox"/>	<input type="checkbox"/>	<input type="checkbox"/>	<input type="checkbox"/>	<input type="checkbox"/>
<input type="checkbox"/>	<input type="checkbox"/>	Other:		<input type="checkbox"/>	<input type="checkbox"/>	<input type="checkbox"/>	<input type="checkbox"/>	<input type="checkbox"/>	<input type="checkbox"/>	<input type="checkbox"/>	<input type="checkbox"/>	<input type="checkbox"/>
<input type="checkbox"/>	<input type="checkbox"/>	Other:		<input type="checkbox"/>	<input type="checkbox"/>	<input type="checkbox"/>	<input type="checkbox"/>	<input type="checkbox"/>	<input type="checkbox"/>	<input type="checkbox"/>	<input type="checkbox"/>	<input type="checkbox"/>
<input type="checkbox"/>	<input type="checkbox"/>	Other:		<input type="checkbox"/>	<input type="checkbox"/>	<input type="checkbox"/>	<input type="checkbox"/>	<input type="checkbox"/>	<input type="checkbox"/>	<input type="checkbox"/>	<input type="checkbox"/>	<input type="checkbox"/>
<input type="checkbox"/>	<input type="checkbox"/>	Other:		<input type="checkbox"/>	<input type="checkbox"/>	<input type="checkbox"/>	<input type="checkbox"/>	<input type="checkbox"/>	<input type="checkbox"/>	<input type="checkbox"/>	<input type="checkbox"/>	<input type="checkbox"/>
<input type="checkbox"/>	<input type="checkbox"/>	Other:		<input type="checkbox"/>	<input type="checkbox"/>	<input type="checkbox"/>	<input type="checkbox"/>	<input type="checkbox"/>	<input type="checkbox"/>	<input type="checkbox"/>	<input type="checkbox"/>	<input type="checkbox"/>
<input type="checkbox"/>	<input type="checkbox"/>	Other:		<input type="checkbox"/>	<input type="checkbox"/>	<input type="checkbox"/>	<input type="checkbox"/>	<input type="checkbox"/>	<input type="checkbox"/>	<input type="checkbox"/>	<input type="checkbox"/>	<input type="checkbox"/>
<input type="checkbox"/>	<input type="checkbox"/>	Other:		<input type="checkbox"/>	<input type="checkbox"/>	<input type="checkbox"/>	<input type="checkbox"/>	<input type="checkbox"/>	<input type="checkbox"/>	<input type="checkbox"/>	<input type="checkbox"/>	<input type="checkbox"/>
<input type="checkbox"/>	<input type="checkbox"/>	Other:		<input type="checkbox"/>	<input type="checkbox"/>	<input type="checkbox"/>	<input type="checkbox"/>	<input type="checkbox"/>	<input type="checkbox"/>	<input type="checkbox"/>	<input type="checkbox"/>	<input type="checkbox"/>
<input type="checkbox"/>	<input type="checkbox"/>	Other:		<input type="checkbox"/>	<input type="checkbox"/>	<input type="checkbox"/>	<input type="checkbox"/>	<input type="checkbox"/>	<input type="checkbox"/>	<input type="checkbox"/>	<input type="checkbox"/>	<input type="checkbox"/>
<input type="checkbox"/>	<input type="checkbox"/>	Other:		<input type="checkbox"/>	<input type="checkbox"/>	<input type="checkbox"/>	<input type="checkbox"/>	<input type="checkbox"/>	<input type="checkbox"/>	<input type="checkbox"/>	<input type="checkbox"/>	<input type="checkbox"/>
<input type="checkbox"/>	<input type="checkbox"/>	Other:		<input type="checkbox"/>	<input type="checkbox"/>	<input type="checkbox"/>	<input type="checkbox"/>	<input type="checkbox"/>	<input type="checkbox"/>	<input type="checkbox"/>	<input type="checkbox"/>	<input type="checkbox"/>
<input type="checkbox"/>	<input type="checkbox"/>	Other:		<input type="checkbox"/>	<input type="checkbox"/>	<input type="checkbox"/>	<input type="checkbox"/>	<input type="checkbox"/>	<input type="checkbox"/>	<input type="checkbox"/>	<input type="checkbox"/>	<input type="checkbox"/>
<input type="checkbox"/>	<input type="checkbox"/>	Other:		<input type="checkbox"/>	<input type="checkbox"/>	<input type="checkbox"/>	<input type="checkbox"/>	<input type="checkbox"/>	<input type="checkbox"/>	<input type="checkbox"/>	<input type="checkbox"/>	<input type="checkbox"/>
<input type="checkbox"/>	<input type="checkbox"/>	Other:		<input type="checkbox"/>	<input type="checkbox"/>	<input type="checkbox"/>	<input type="checkbox"/>	<input type="checkbox"/>	<input type="checkbox"/>	<input type="checkbox"/>	<input type="checkbox"/>	<input type="checkbox"/>
<input type="checkbox"/>	<input type="checkbox"/>	Other:		<input type="checkbox"/>	<input type="checkbox"/>	<input type="checkbox"/>	<input type="checkbox"/>	<input type="checkbox"/>	<input type="checkbox"/>	<input type="checkbox"/>	<input type="checkbox"/>	<input type="checkbox"/>
<input type="checkbox"/>	<input type="checkbox"/>	Other:		<input type="checkbox"/>	<input type="checkbox"/>	<input type="checkbox"/>	<input type="checkbox"/>	<input type="checkbox"/>	<input type="checkbox"/>	<input type="checkbox"/>	<input type="checkbox"/>	<input type="checkbox"/>
<input type="checkbox"/>	<input type="checkbox"/>	Other:		<input type="checkbox"/>	<input type="checkbox"/>	<input type="checkbox"/>	<input type="checkbox"/>	<input type="checkbox"/>	<input type="checkbox"/>	<input type="checkbox"/>	<input type="checkbox"/>	<input type="checkbox"/>
<input type="checkbox"/>	<input type="checkbox"/>	Other:		<input type="checkbox"/>	<input type="checkbox"/>	<input type="checkbox"/>	<input type="checkbox"/>	<input type="checkbox"/>	<input type="checkbox"/>	<input type="checkbox"/>	<input type="checkbox"/>	<input type="checkbox"/>
<input type="checkbox"/>	<input type="checkbox"/>	Other:		<input type="checkbox"/>	<input type="checkbox"/>	<input type="checkbox"/>	<input type="checkbox"/>	<input type="checkbox"/>	<input type="checkbox"/>	<input type="checkbox"/>	<input type="checkbox"/>	<input type="checkbox"/>
<input type="checkbox"/>	<input type="checkbox"/>	Other:		<input type="checkbox"/>	<input type="checkbox"/>	<input type="checkbox"/>	<input type="checkbox"/>	<input type="checkbox"/>	<input type="checkbox"/>	<input type="checkbox"/>	<input type="checkbox"/>	<input type="checkbox"/>
<input type="checkbox"/>	<input type="checkbox"/>	Other:		<input type="checkbox"/>	<input type="checkbox"/>	<input type="checkbox"/>	<input type="checkbox"/>	<input type="checkbox"/>	<input type="checkbox"/>	<input type="checkbox"/>	<input type="checkbox"/>	<input type="checkbox"/>
<input type="checkbox"/>	<input type="checkbox"/>	Other:		<input type="checkbox"/>	<input type="checkbox"/>	<input type="checkbox"/>	<input type="checkbox"/>	<input type="checkbox"/>	<input type="checkbox"/>	<input type="checkbox"/>	<input type="checkbox"/>	<input type="checkbox"/>
<input type="checkbox"/>	<input type="checkbox"/>	Other:		<input type="checkbox"/>	<input type="checkbox"/>	<input type="checkbox"/>	<input type="checkbox"/>	<input type="checkbox"/>	<input type="checkbox"/>	<input type="checkbox"/>	<input type="checkbox"/>	<input type="checkbox"/>
<input type="checkbox"/>	<input type="checkbox"/>	Other:		<input type="checkbox"/>	<input type="checkbox"/>	<input type="checkbox"/>	<input type="checkbox"/>	<input type="checkbox"/>	<input type="checkbox"/>	<input type="checkbox"/>	<input type="checkbox"/>	<input type="checkbox"/>
<input type="checkbox"/>	<input type="checkbox"/>	Other:		<input type="checkbox"/>	<input type="checkbox"/>	<input type="checkbox"/>	<input type="checkbox"/>	<input type="checkbox"/>	<input type="checkbox"/>	<input type="checkbox"/>	<input type="checkbox"/>	<input type="checkbox"/>
<input type="checkbox"/>	<input type="checkbox"/>	Other:		<input type="checkbox"/>	<input type="checkbox"/>	<input type="checkbox"/>	<input type="checkbox"/>	<input type="checkbox"/>	<input type="checkbox"/>	<input type="checkbox"/>	<input type="checkbox"/>	<input type="checkbox"/>
<input type="checkbox"/>	<input type="checkbox"/>	Other:		<input type="checkbox"/>	<input type="checkbox"/>	<input type="checkbox"/>	<input type="checkbox"/>	<input type="checkbox"/>	<input type="checkbox"/>	<input type="checkbox"/>	<input type="checkbox"/>	<input type="checkbox"/>
<input type="checkbox"/>	<input type="checkbox"/>	Other:		<input type="checkbox"/>	<input type="checkbox"/>	<input type="checkbox"/>	<input type="checkbox"/>	<input type="checkbox"/>	<input type="checkbox"/>	<input type="checkbox"/>	<input type="checkbox"/>	<input type="checkbox"/>
<input type="checkbox"/>	<input type="checkbox"/>	Other:		<input type="checkbox"/>	<input type="checkbox"/>	<input type="checkbox"/>	<input type="checkbox"/>	<input type="checkbox"/>	<input type="checkbox"/>	<input type="checkbox"/>	<input type="checkbox"/>	<input type="checkbox"/>
<input type="checkbox"/>	<input type="checkbox"/>	Other:		<input type="checkbox"/>	<input type="checkbox"/>	<input type="checkbox"/>	<input type="checkbox"/>	<input type="checkbox"/>	<input type="checkbox"/>	<input type="checkbox"/>	<input type="checkbox"/>	<input type="checkbox"/>
<input type="checkbox"/>	<input type="checkbox"/>	Other:		<input type="checkbox"/>	<input type="checkbox"/>	<input type="checkbox"/>	<input type="checkbox"/>	<input type="checkbox"/>	<input type="checkbox"/>	<input type="checkbox"/>	<input type="checkbox"/>	<input type="checkbox"/>
<input type="checkbox"/>	<input type="checkbox"/>	Other:		<input type="checkbox"/>	<input type="checkbox"/>	<input type="checkbox"/>	<input type="checkbox"/>	<input type="checkbox"/>	<input type="checkbox"/>	<input type="checkbox"/>	<input type="checkbox"/>	<input type="checkbox"/>
<input type="checkbox"/>	<input type="checkbox"/>	Other:		<input type="checkbox"/>	<input type="checkbox"/>	<input type="checkbox"/>	<input type="checkbox"/>	<input type="checkbox"/>	<input type="checkbox"/>	<input type="checkbox"/>	<input type="checkbox"/>	<input type="checkbox"/>
<input type="checkbox"/>	<input type="checkbox"/>	Other:		<input type="checkbox"/>	<input type="checkbox"/>	<input type="checkbox"/>	<input type="checkbox"/>	<input type="checkbox"/>	<input type="checkbox"/>	<input type="checkbox"/>	<input type="checkbox"/>	<input type="checkbox"/>
<input type="checkbox"/>	<input type="checkbox"/>	Other:		<input type="checkbox"/>	<input type="checkbox"/>	<input type="checkbox"/>	<input type="checkbox"/>	<input type="checkbox"/>	<input type="checkbox"/>	<input type="checkbox"/>	<input type="checkbox"/>	<input type="checkbox"/>
<input type="checkbox"/>	<input type="checkbox"/>	Other:		<input type="checkbox"/>	<input type="checkbox"/>	<input type="checkbox"/>	<input type="checkbox"/>	<input type="checkbox"/>	<input type="checkbox"/>	<input type="checkbox"/>	<input type="checkbox"/>	<input type="checkbox"/>
<input type="checkbox"/>	<input type="checkbox"/>	Other:		<input type="checkbox"/>	<input type="checkbox"/>	<input type="checkbox"/>	<input type="checkbox"/>	<input type="checkbox"/>	<input type="checkbox"/>	<input type="checkbox"/>	<input type="checkbox"/>	<input type="checkbox"/>
<input type="checkbox"/>	<input type="checkbox"/>	Other:		<input type="checkbox"/>	<input type="checkbox"/>	<input type="checkbox"/>	<input type="checkbox"/>	<input type="checkbox"/>	<input type="checkbox"/>	<input type="checkbox"/>	<input type="checkbox"/>	<input type="checkbox"/>
<input type="checkbox"/>	<input type="checkbox"/>	Other:		<input type="checkbox"/>	<input type="checkbox"/>	<input type="checkbox"/>	<input type="checkbox"/>	<input type="checkbox"/>	<input type="checkbox"/>	<input type="checkbox"/>	<input type="checkbox"/>	<input type="checkbox"/>
<input type="checkbox"/>	<input type="checkbox"/>	Other:		<input type="checkbox"/>	<input type="checkbox"/>	<input type="checkbox"/>	<input type="checkbox"/>	<input type="checkbox"/>	<input type="checkbox"/>	<input type="checkbox"/>	<input type="checkbox"/>	<input type="checkbox"/>
<input type="checkbox"/>	<input type="checkbox"/>	Other:		<input type="checkbox"/>	<input type="checkbox"/>	<input type="checkbox"/>	<input type="checkbox"/>	<input type="checkbox"/>	<input type="checkbox"/>	<input type="checkbox"/>	<input type="checkbox"/>	<input type="checkbox"/>
<input type="checkbox"/>	<input type="checkbox"/>	Other:		<input type="checkbox"/>	<input type="checkbox"/>	<input type="checkbox"/>	<input type="checkbox"/>	<input type="checkbox"/>	<input type="checkbox"/>	<input type="checkbox"/>	<input type="checkbox"/>	<input type="checkbox"/>
<input type="checkbox"/>	<input type="checkbox"/>	Other:										

Chemical Inventory

Submit an Updated Chemical Inventory Form When:

- Amount Typically Used, Handled, Stored, or Received has Changed; or
- A New Chemical is Added; or
- Use of a Chemical is Discontinued.

Email to

stormwater@lawa.org



Best Management Practices



Best Management Practices

- **Definition**

“A practice, or combination of practices, that is determined by a State (or designated area wide planning agency) after problem assessment, examination of alternative practices, and appropriate public participation to be the most effective, practicable (including technological, economic, and institutional considerations) means of preventing or reducing the amount of pollution generated by nonpoint sources to a level compatible with water quality goals.”



Best Management Practices

- **Order 2014-0057-DWQ General Permit for Storm Water Discharges Association with Industrial Activities**

“The Discharger shall, to the extent feasible, implement and maintain all of the following minimum BMPs to reduce or prevent pollutants in industrial storm water discharges.”

- **State Water Board requires that BMPs be implemented, documented and kept in the records!**

Source Control

SC1	ELIMINATION OF NON-STORM WATER DISCHARGES TO STORM DRAIN
SC2	AIRCRAFT, GROUND VEHICLE AND EQUIPMENT MAINTENANCE
SC3	AIRCRAFT, GROUND VEHICLE, AND EQUIPMENT FUELING
SC4	AIRCRAFT, GROUND VEHICLE AND EQUIPMENT WASHING
SC5	AIRCRAFT DEICING/ANTI-ICING
SC6	OUTDOOR MATERIAL HANDLING
SC7	OUTDOOR STORAGE OF SIGNIFICANT MATERIAL
SC8	WASTE/GARBAGE HANDLING AND DISPOSAL
SC9	BUILDING AND GROUNDS MAINTENANCE
SC10	STORM WATER POLLUTION PREVENTION EDUCATION
SC11	LAVATORY SERVICE OPERATIONS
SC12	OUTDOOR WASHDOWN/SWEEPING
SC13	FIRE FIGHTING FOAM DISCHARGE
SC14	POTABLE WATER SYSTEM FLUSHING
SC15	RUNWAY RUBBER REMOVAL

BMPs

Treatment Control

TC1 OIL/WATER SEPARATORS

Spill Response

SR1 EMERGENCY SPILL CLEANUP PLANS

New Addition: CASQA BMPs

SC40 CONTAMINATED OR ERODIBLE AREAS

SC44 DRAINAGE SYSTEM MAINTENANCE





LAX

Los Angeles World Airports

Rules and Regulations

LOS ANGELES WORLD AIRPORTS

SC1

ELIMINATION OF NON-STORM WATER DISCHARGES TO STORM DRAINS

PURPOSE:

Existing discharges: Eliminate non-storm water discharges to the storm water collection system. Non-storm water discharges can be classified as follows: 1) *Activity-based* (subtle), and 2) *Overt* (hard pipe connection). Activity-based non-storm water discharges may include: wash water, deicing fluids, and spillage. Overt non-storm water discharges may include: process wastewater, treated cooling water, and sanitary wastewater.

Prevention of illicit connections: Prevent improper physical connections to the storm drain system from sanitary sewers, floor drains, industrial process discharge lines, and wash racks through education, developing project approval conditions, and performing both construction phase and post-construction inspections.

GENERAL APPROACH:

Identification of Activity-Based (Subtle) Discharges:

The following techniques may be used to identify activity-based non-storm water discharges to the storm water collection system:

- Perform frequent activity inspections to identify non-storm water discharges -

TARGETED ACTIVITIES

All Maintenance
All Fueling
All Washing
Equipment Cleaning
Cargo Handling
All Storage
Painting/Stripping
Floor Washdowns
Aircraft Deicing/Anti-Icing
Garbage Collection
Aircraft Lavatory Service
Fire Fighting Equip. Testing
Potable Water System Flush
Runway Rubber Removal

TARGETED POLLUTANTS

Oil and Grease
Vehicle Fluids
Fuel
Solvents/Cleaning Sol.
Deicing/Anti-Icing Fluid


Los Angeles
World Airports

- LAX Rules & Regulations
 - <http://www.lawa.org/airops.aspx?id=862&linkidentifier=id&itemid=862>
- LAWA SWPPPs
 - https://www.lawa.org/welcome_lawa.aspx?id=1864



Best Management Practices

Description of BMPs (Reference BMP Fact Sheet Number); SWPPP Table 4.1 shows summary of the BMPs for each airport (List below shows BMPs implemented at LAWA and may not be airport specific.)	A. Facility BMPs (Check All Applicable); Previously reported BMPs are located in Table 4.2 of the SWPPP	B. Change in BMP use on facility? New or Eliminated Use	C. Implementation Location (Check all Applicable)				D. Implementation Frequency Routine (Describe: Daily, Weekly, Monthly, Others, or As Needed)	E. BMP Deficient? Yes (describe in "Comments") or No or Not Applicable - NA	F. BMP Comments (Corrective Actions); Attach Any Supporting Photos (including description)
			Outdoor Industrial Activities Areas	Outdoor Industrial Equipment and Storage Areas	Chemical Storage Areas	Others (Describe all other potential source of industrial pollutants)			
Elimination of NSWD (LAWA SC1); Illicit Connection									
Aircraft, Ground Vehicle, and Equipment Maintenance (LAWA SC2)									
Aircraft, Vehicle and Equipment Fueling (LAWA SC3)									
Aircraft, Vehicle and Equipment Washing (SC4)									
Aircraft Deicing (SC5)									
Outdoor Material Handling (SC6)									
Outdoor Storage of Significant Material (SC7); Storage Tanks and Uncovered Outdoor Storage									
Waste Handling and Disposal (SC8); Housekeeping and Uncovered Dumpsters									
Building and Grounds Maintenance (SC9); Housekeeping									
Storm Water Pollution Prevention (SC10); Employee awareness training and recordkeeping Education									
Lavatory Service Operations (SC11)									
Outdoor Washdown/Sweeping (SC12); Stains on pavement/concrete									
Fire Fighting Foam Discharge (SC13)									
Potable Water System Flushing (SC14)									
Runway Rubber Removal (SC15)									
Oil/Water Separators (LAWA TC1)									
Emergency Spill Cleanup Plan (LAWA SR1); Spill kits and Plan Posted									
Contaminated or Erodible Surfaces (CASQA SC-40)									
Drainage System Maintenance (CASQA SC- 44)									
Wet Pond (CASQA - TC-20)									
Extended Detention Basin (CASQA TC-22)									
Media Filter (CASQA TC- 40)									
Gravity Separator (CASQA MP-51)									

Best Management Practices

LOS ANGELES WORLD AIRPORTS

SC1

**ELIMINATION OF NON-STORM WATER
DISCHARGES TO STORM DRAINS**

- **Target Group: EVERYONE**
- **Target Pollutants: EVERYTHING**



Best Management Practices

LOS ANGELES WORLD AIRPORTS

SC1

ELIMINATION OF NON-STORM WATER DISCHARGES TO STORM DRAINS

- **Key Approaches:**
 - Assessments and Enforcement
 - Training Employees
 - Education Vendors/Public
 - **If it's not raining and there's a liquid flowing to the storm drain, this is occurring!!! It must be reported on the DWO Form.**



Best Management Practices

LOS ANGELES WORLD AIRPORTS

SC2

AIRCRAFT, GROUND VEHICLE AND EQUIPMENT MAINTENANCE

- **Target Group:** Facilities Performing Maintenance Activity/ies.
- **Key Approaches**
 - Conduct Maintenance Indoors
 - Prevent Discharges to the Storm Drain
 - Clean Catch Basins
 - Collect and Properly Dispose All Fluids

SC-2: What are the Issues?

77



SC-2: What are the Issues?

78



Best Management Practices

LOS ANGELES WORLD AIRPORTS

SC3	AIRCRAFT, GROUND VEHICLE, AND EQUIPMENT FUELING
-----	---

- **Target Group:** Facilities performing ANY fueling activity.
- **Key Approaches:**
 - Berm Fueling Area
 - Dry Method for Spill Clean Ups
 - Install Proper Fueling Equipment



SC-3: What are the Issues?

80



Best Management Practices

LOS ANGELES WORLD AIRPORTS

SC4	AIRCRAFT, GROUND VEHICLE AND EQUIPMENT WASHING
-----	--

- **Target Group:** Facilities Performing Washing or Degreasing Activity/ies
- **Key Approaches**
 - Use Designated Area
 - Use Dry Washing Techniques
 - Recycle wash water or discharge appropriately
 - Cover catch basins
 - Provide training

SC-4: What are the Issues?

82



Best Management Practices

LOS ANGELES WORLD AIRPORTS

SC5

AIRCRAFT DEICING/ANTI-ICING

- **Target Group:** Facility with De-Icing Activity
- **Key Approaches:**
 - Perform in designated areas only
 - Apply only required amounts of fluid
 - Clean ramp area when done
 - Implement forthcoming recommendations of FAA

SC-5 Deicing/Anti-icing

84



Best Management Practices

LOS ANGELES WORLD AIRPORTS

SC6

OUTDOOR MATERIAL HANDLING

- **Target Group:**
 - Cargo Handling
 - Fuel Storage
 - Chemical Storage
 - Equipment Storage



SC-6: What are the Issues?

86





Best Management Practices

LOS ANGELES WORLD AIRPORTS

SC6

OUTDOOR MATERIAL HANDLING

- **Key Approaches:**
 - Conduct Loading/Unloading Under Cover
 - Transfer Materials in Paved Areas
 - Clean Up Spills
 - Clean and Sweep Cracks!







SC-6 Issues with Copper and Aluminum ⁹¹



SC-6 Issues with Copper and Aluminum⁹²



Best Management Practices

LOS ANGELES WORLD AIRPORTS

SC7

OUTDOOR STORAGE OF SIGNIFICANT MATERIAL

- **Target Group:**
 - Aircraft/Vehicle/Equipment Maintenance
 - Aircraft/Vehicle Fueling
 - Fuel/Chemical/ Equipment Storage
 - Cargo Handling





Best Management Practices

LOS ANGELES WORLD AIRPORTS

SC7

OUTDOOR STORAGE OF SIGNIFICANT MATERIAL

- **Key Approaches**

- Store materials indoors or under cover
- Store drums/ containers on pallets
- Provide berming or secondary containment
- Develop/implement an SPCC, if required
- Perform and document periodic inspections







Best Management Practices

LOS ANGELES WORLD AIRPORTS

SC8

WASTE/GARBAGE HANDLING AND DISPOSAL

- **Target Group:**
 - Fuel/Chemical Storage
 - Painting/Stripping
 - Garbage Collection



Best Management Practices

LOS ANGELES WORLD AIRPORTS

SC8

WASTE/GARBAGE HANDLING AND DISPOSAL

- **Key Approaches**
 - Cover Waste Storage Areas
 - Recycle Materials
 - Inspect & Clean Waste Storage Areas
 - Berm Waste Storage Areas
 - Clean Dumpsters in Designated Areas
 - Properly Dispose of Liquids







Best Management Practices

LOS ANGELES WORLD AIRPORTS

SC9

BUILDING AND GROUNDS MAINTENANCE

- **Target Group:** Facilities maintaining Building and/or Grounds
- **Key Approaches**
 - Clean and Sweep Paved Surfaces
 - Clean Catch Basins
 - Manage Use of Pesticides/Herbicides/Fertilizers



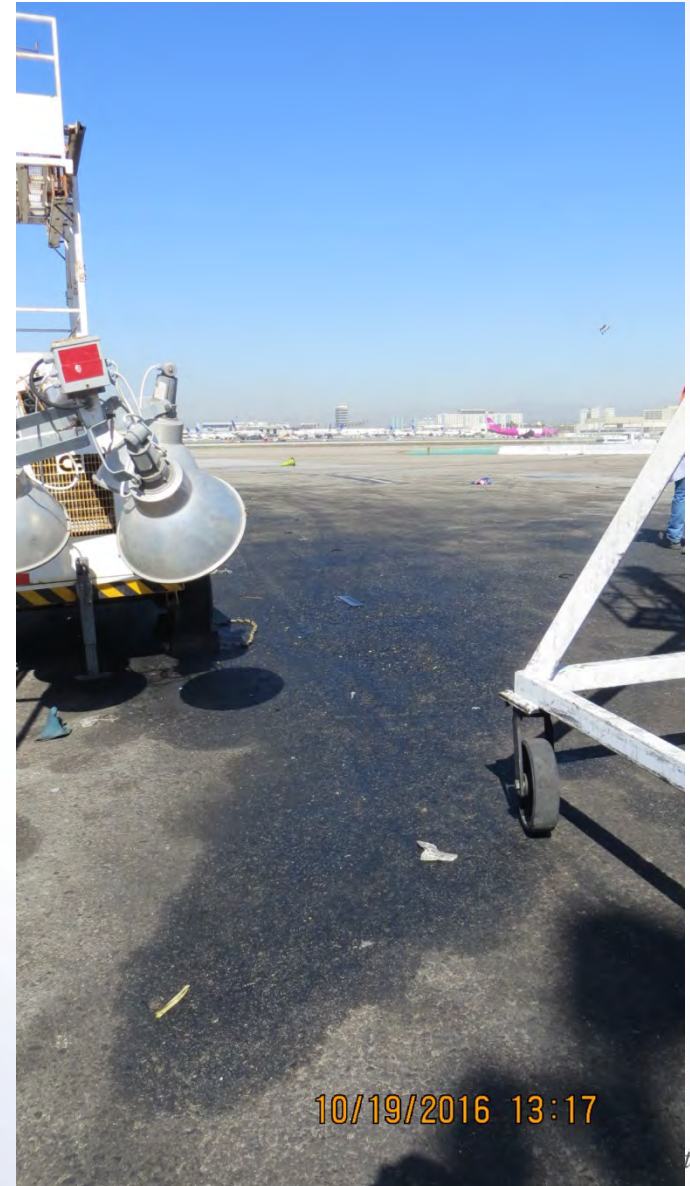
Kudos

104

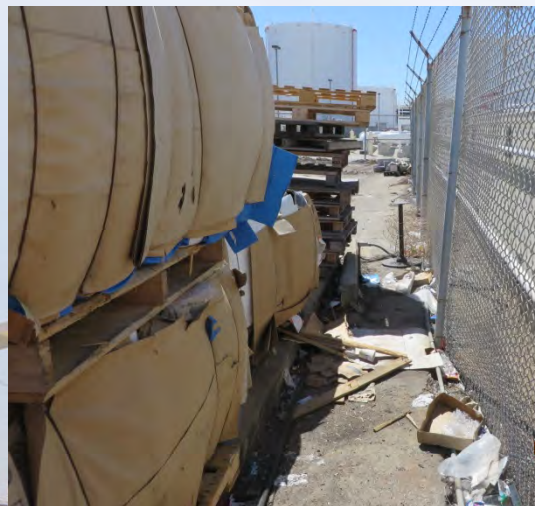


Sites need clenaing

105



Trash at the surface leads to.....



.....Trash in the DRAINS!!

107



Best Management Practices

LOS ANGELES WORLD AIRPORTS

SC10

STORM WATER POLLUTION PREVENTION EDUCATION

- **Target Group: EVERYONE**
- **Key Approaches**
 - Perform inspections and enforcement
 - Provide training for employees
 - Promote education of vendors/public



Additional Trainings

- **As part of the Risk Level 1 Report LAWA will be increasing the trainings of facilities that have exposure of pollutants.**
 - **Facility specific trainings will be scheduled for facility managers and personnel.**



Best Management Practices

LOS ANGELES WORLD AIRPORTS

SC11

LAVATORY SERVICE OPERATIONS

- **Target Group:** Facilities with aircraft lavatory service performed on site and/or lavatory truck cleanout/backflushing.



Best Management Practices

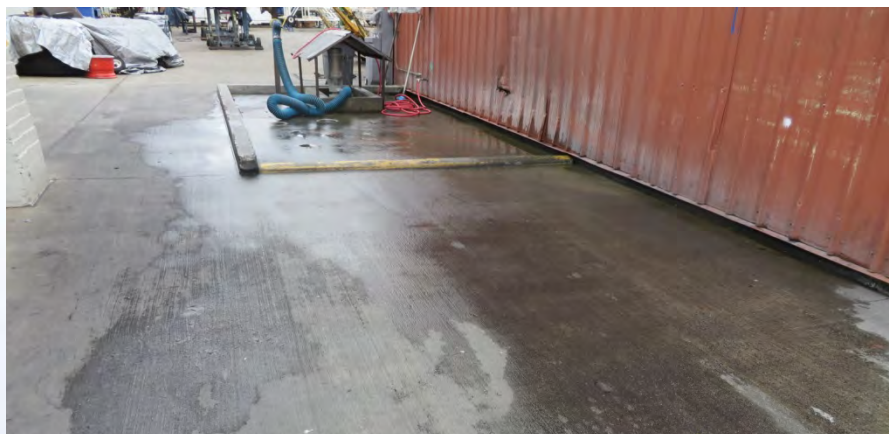
LOS ANGELES WORLD AIRPORTS

SC11

LAVATORY SERVICE OPERATIONS

- **Key Approaches**
 - Discharge Only at Triturator Facilities
 - Utilize Buckets/Pans
 - Cleanout/Backflush Only at Triturator Facilities
 - Spill Kit





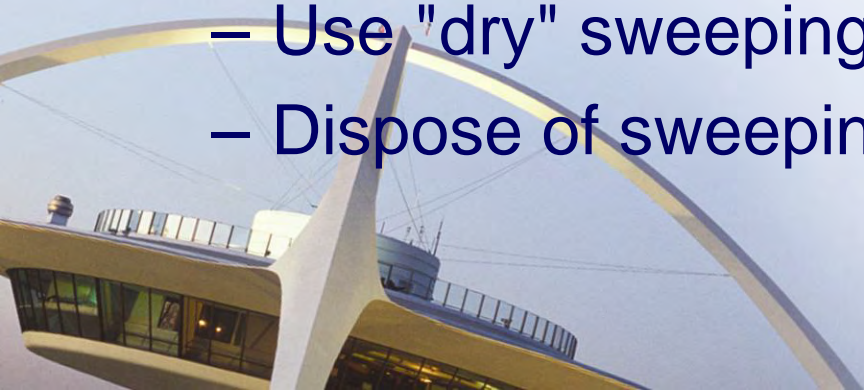
Best Management Practices

LOS ANGELES WORLD AIRPORTS

SC12

OUTDOOR WASHDOWN/SWEEPING

- **Target Group:** Facilities performing Apron/Ramp/Outdoor Washing/Scrubbing/Wash-down
- **KEY APPROACHES**
 - Collect and discharge wash water to the sewer
 - Use "dry" sweeping techniques
 - Dispose of sweepings



- **In GSE repair areas, chemical storage/transfer areas and equipment parking areas: detergent based scrubs must be performed at a frequency that prevents the build-up and exposure of oils to storm water and non-storm water discharges.**
 - Year round requirement!



Cleaning can work

115





Best Management Practices

LOS ANGELES WORLD AIRPORTS

SC13

FIRE FIGHTING FOAM DISCHARGE

- **Target Group:** Fire Fighting Equipment Testing and Flushing
- **Key Approaches**
 - Conduct Tests in Designated Areas
 - Properly Dispose/Recycle Foam Discharge
 - Service Sump Regularly



Best Management Practices

LOS ANGELES WORLD AIRPORTS

SC14

POTABLE WATER SYSTEM FLUSHING

- **Target Group:** Facilities cleaning/washing aircraft/water truck potable water system
- **KEY APPROACHES**
 - Flush in Designated Areas
 - Collect Discharge and Discharge Sanitary Sewer



Best Management Practices

LOS ANGELES WORLD AIRPORTS

SC15

RUNWAY RUBBER REMOVAL

- **Target Group:** Facilities Performing Runway Rubber Removal
- **KEY APPROACHES**
 - Use Filter Fabric Over Culverts
 - Use Manual/Mechanical Methods to Remove Particulates



Best Management Practices

LOS ANGELES WORLD AIRPORTS

TC1

OIL/WATER SEPARATORS

- **Target Group: Facilities Performing...**
 - Aircraft/Vehicle/Equipment Maintenance/Fueling/Washing/Degreasing
 - Fuel/Chemical Storage
 - Cargo Handling



Best Management Practices

LOS ANGELES WORLD AIRPORTS

TC1

OIL/WATER SEPARATORS

- **KEY APPROACHES**

- Frequently inspect and clean separators
- Replace absorbent pads as needed



- **Know how your system operates. Ensure all wash wastes go to clarifier and not the storm drain!!!!**



Best Management Practices

LOS ANGELES WORLD AIRPORTS

SR1

EMERGENCY SPILL CLEANUP PLANS

- **Target Group: Facilities Performing...**
 - Aircraft/Vehicle/Equipment Maintenance/Fueling/Washing/Degreasing
 - Fuel/Chemical Storage
 - Cargo Handling



Best Management Practices

LOS ANGELES WORLD AIRPORTS

SR1

EMERGENCY SPILL CLEANUP PLANS

- **Key Approaches**
 - Develop/Implement SPCC (if required)
 - SPCC Training
 - Containment/Clean Up Spills
 - Spill Kit
 - Required Agency Notification



It's best to be ready.....

125



It's best to be ready.....

126



It's best to be ready.....

127



Because spills happen.

128



Best Management Practices

Contaminated or Erodible Areas SC-40

- **Target Group:** Facilities with areas bare of vegetation.
- **Key Approaches:**
 - Erosion and Sediment Control BMPs such as natural vegetation, hydro seeding, geotextiles, watering trucks, or degradable mulches.



Monitor your landscape areas

130



Exposed Soils

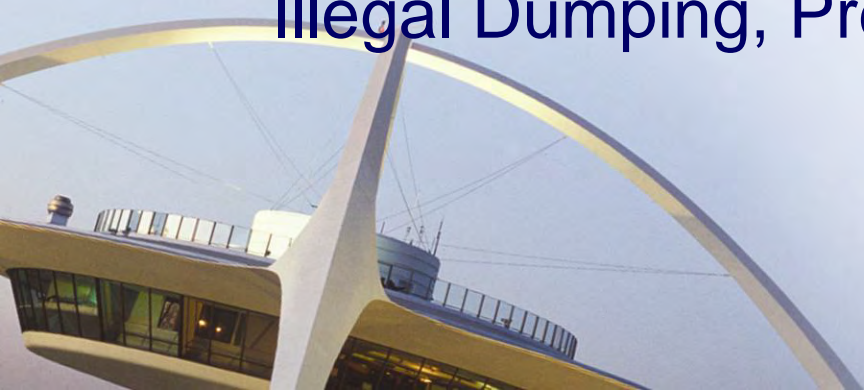
131



Best Management Practices

Drainage System Maintenance SC-44

- **Target Group:** Facilities with storm water conveyance systems.
- **Key Approaches**
 - Eliminate Illicit Discharges, Illicit Connections, Illegal Dumping, Prevent and Clean Up Spills



Routine cleaning required

133



Los Angeles
World Airports

Best Management Practices

Extended Detention Basin

TC-22

- **Target Group:** LAX Facilities in the Imperial Drainage Basin
- **Key Approach**
 - You still can't dump anything you want in the storm drain system



LAWA's insurance policy, not yours.¹³⁵



Best Management Practices

Media Filter

TC-40

- **Target Group:** Facilities with Media Filters
- **Key Approach**
 - Maintain and Inspect Regularly



- Think “Storm Water Impact” when you’re surveying your facility.
- When you see a problem, fix it or find someone who can.
- Perform your Dry Weather Observation once a month, complete the form, submit no later than the 5th of the following month.
- One email for all forms:
stormwater@lawa.org



Consequences of Non-Compliance



Consequences of Non-Compliance¹³⁹

- **Dirty Shop → Unsafe Work Conditions**
- **Inefficient Operations**
- **Vehicle and Equipment Impoundment**
- **Operation Shutdowns**
- **Regulatory Oversight**
- **Non-Renewal of Leases**



Consequences of Non-Compliance¹⁴⁰

Removal from LAWA's SWPPP and program:

- \$1,282.00/Year Permit Fee***
- <\$30,000/Year for Monitoring Requirements**
- <\$10,000/Year Consultant Fees for Annual Reporting**
- <\$20,000 For a Facility SWPPP**
- >\$3,000/serious violation/day***
- Potential Criminal Penalties**

* Regional Water Quality Control Board

- LAWA Storm Water Program

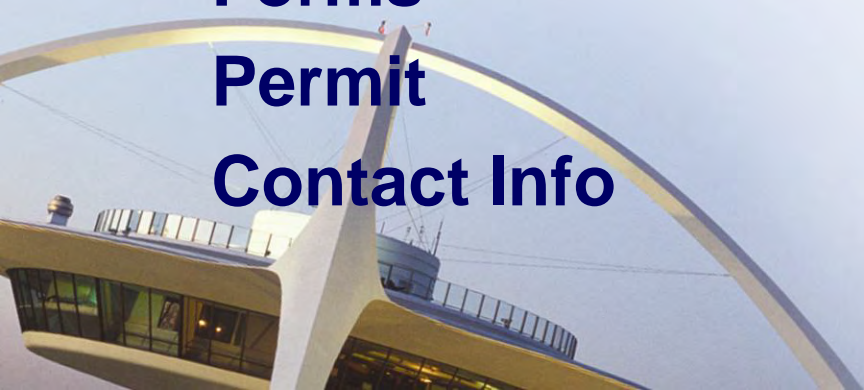
– [https://www.lawa.org/
welcome_lawa.aspx?id
=1864](https://www.lawa.org/welcome_lawa.aspx?id=1864)

SWPPPs

Forms

Permit

Contact Info



- **BMPs**
 - **LAX Rules & Regulations**
 - <http://www.lawa.org/aiops.aspx?id=862&linkidentifier=id&itemid=862>
 - **VNY Rules & Regulations**
 - Use LAX Rules & Regs
 - Use VNY SWPPP
 - **California Storm Water Quality Association**
 - **BMP Handbooks**
 - <https://www.casqa.org/resources/bmp-handbooks/industrial-commercial>



- **Robert Freeman – Airport Environmental Manager**
– 424-646-6474 rfreeman@lawa.org
- **Lisa Dugas – Environmental Affairs Officer**
– 424-646-6485 ldugas@lawa.org
- **Somvang Meksavanh – Environmental Specialist**
– 424-646-6492 smeksavanh@lawa.org
- **Kevin Jontz – Environmental Specialist**
– 424-646-9044 kjontz@lawa.org
- **Environmental General Number 424-646-6500**



Q&A...

