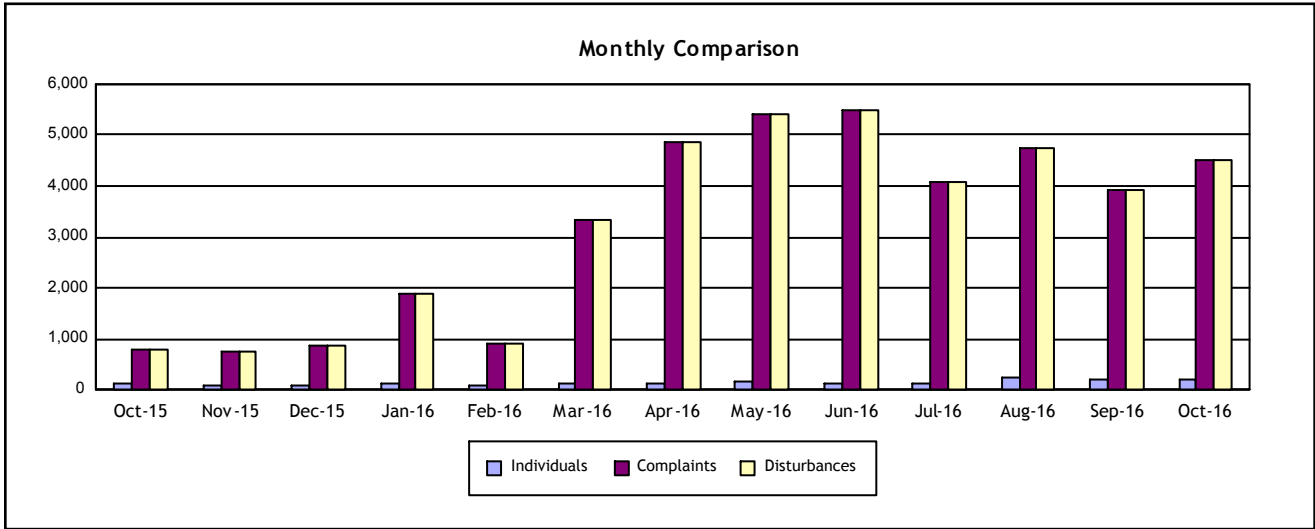


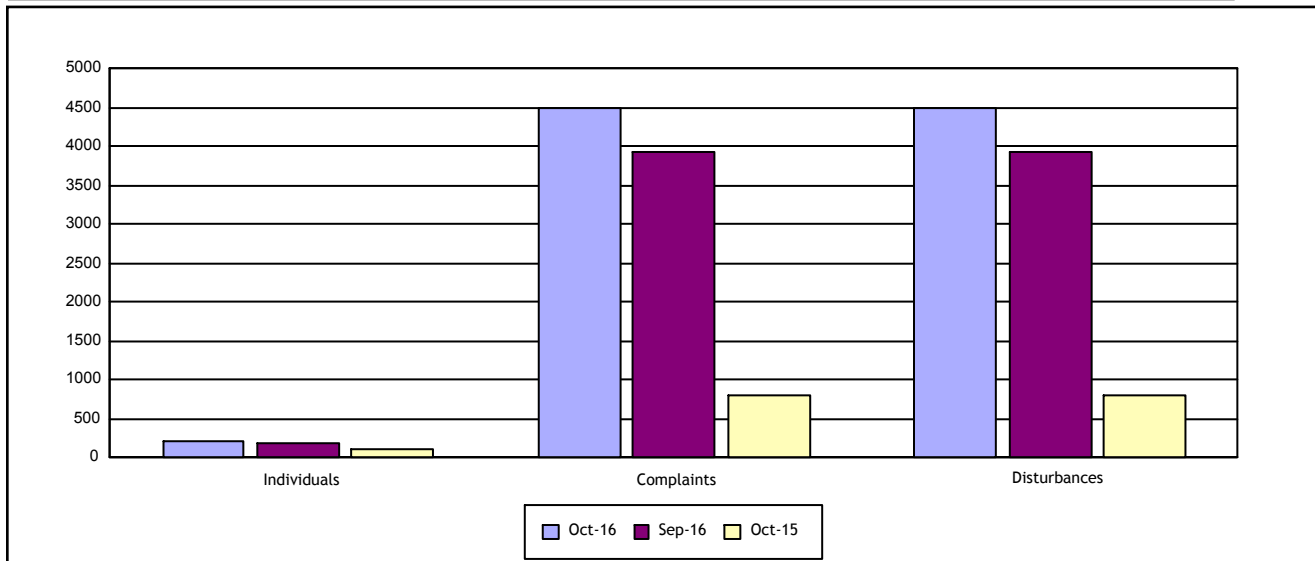
Individuals Submitting Noise Complaints **204**

Noise Complaints Received **4,504**

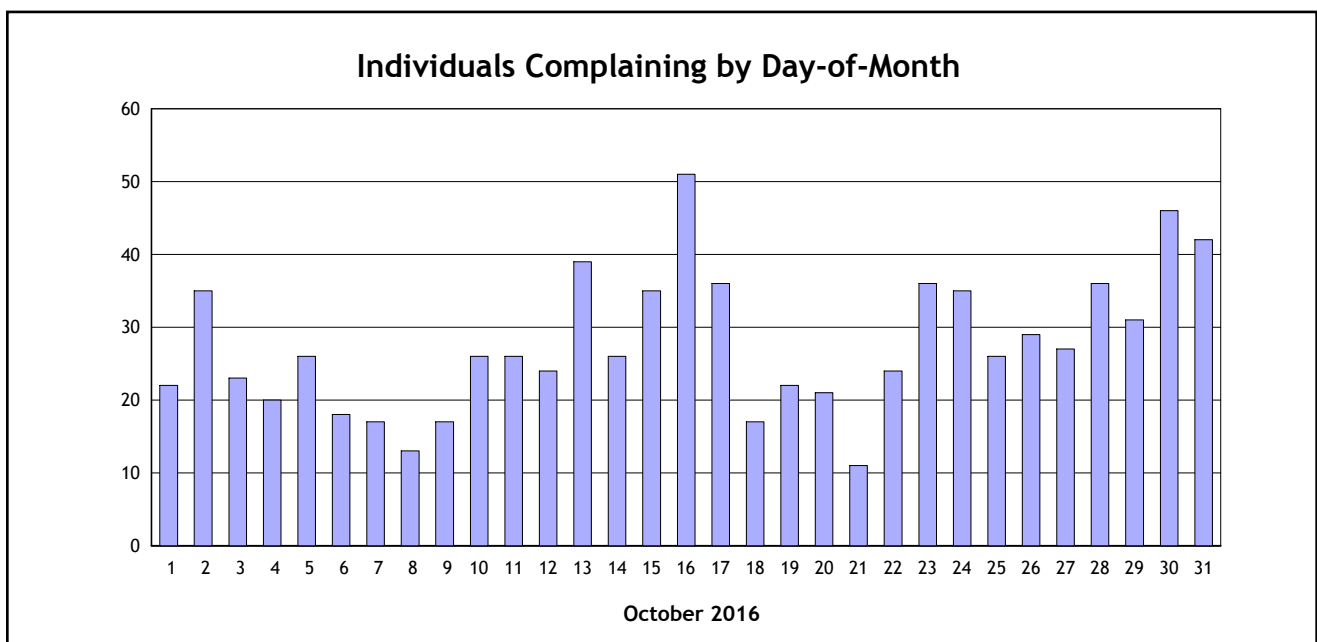
Noise Disturbances Reported **4,504**



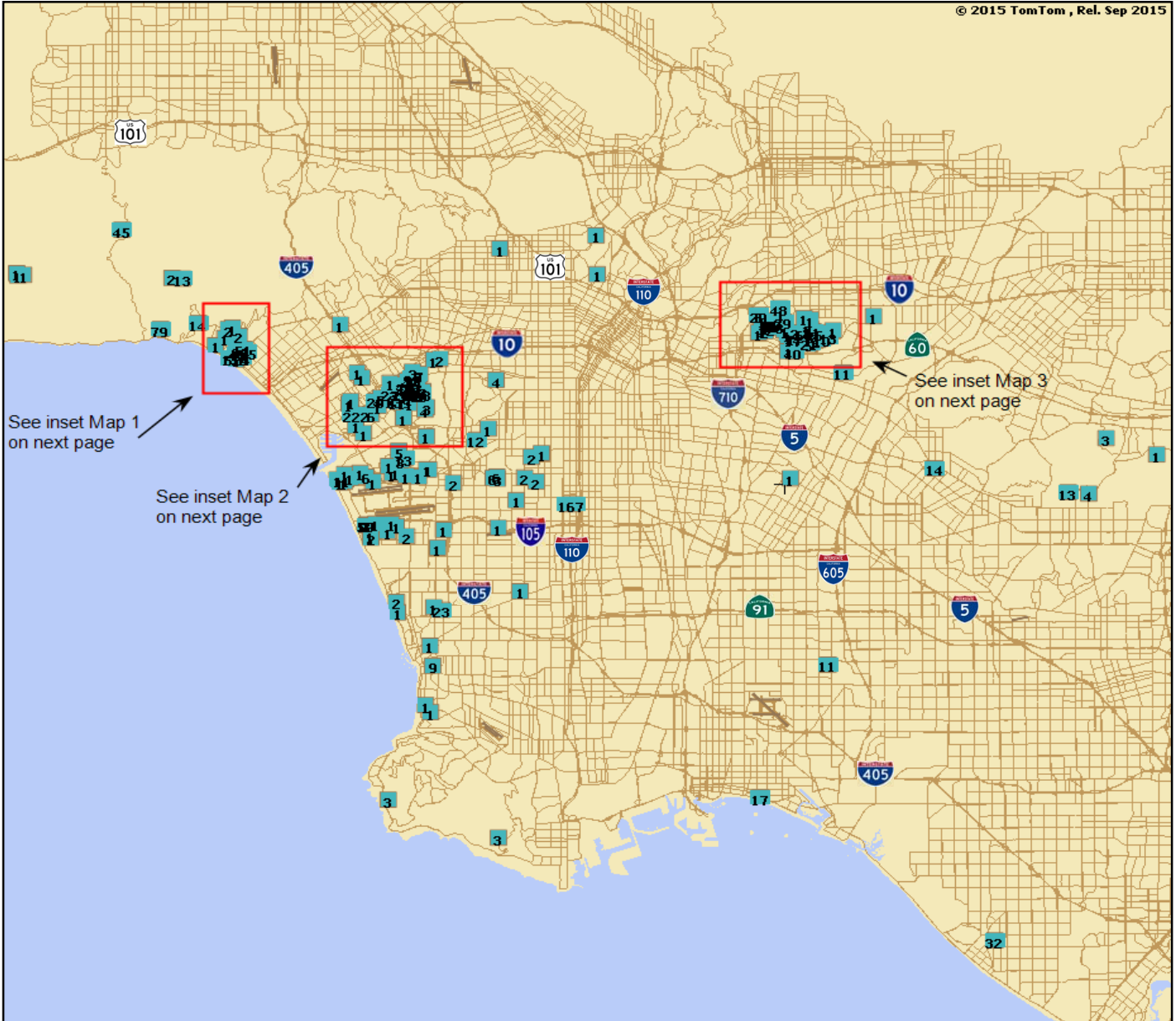
	October 2016	September 2016	% Change	October 2015	% Change
Individuals	204	189	8%	111	84%
Complaints	4,504	3,923	15%	792	469%
Disturbances	4,504	3,923	15%	792	469%



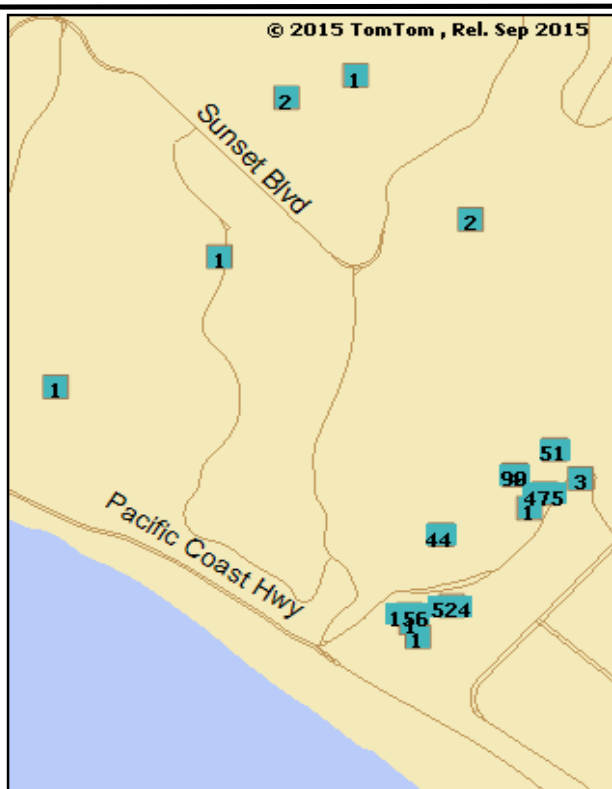
	Day ( 7:00 am - 7:00 pm)	Evening (7:00 pm - 10:00 pm)	Night (10:00 pm - 7:00 am)
Complaints	2,395	1,029	1,080
Disturbances	2,349	1,042	1,113



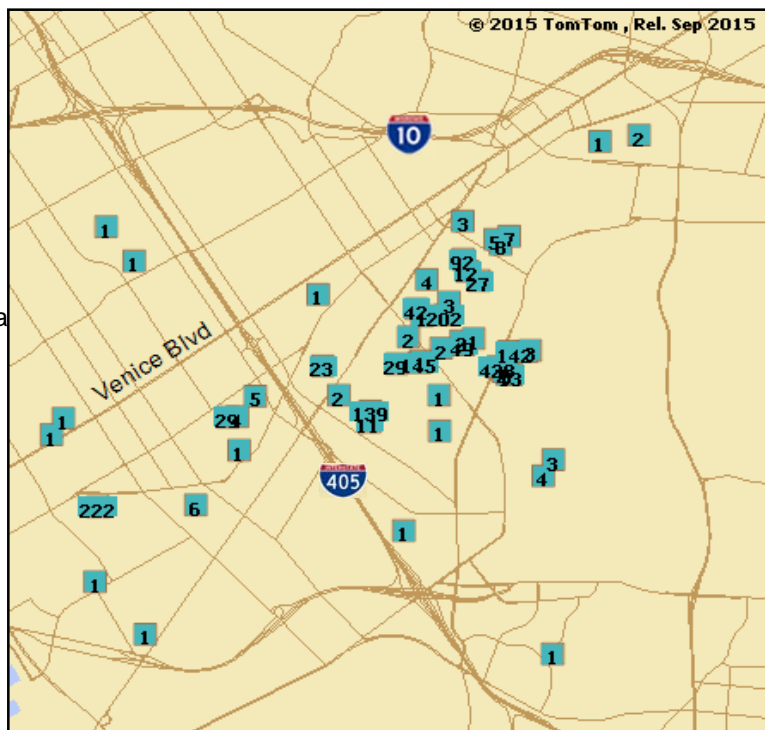
City	Individuals	Complaints	Percentage of Complaints**
Alhambra	1	48	1%
Camarillo	1	1	< 1%
Culver City	41	1304	29%
Downey	1	1	< 1%
El Segundo	13	85	2%
Gardena	1	1	< 1%
Hawthorne	1	1	< 1%
Hermosa Beach	2	2	< 1%
Huntington Beach	1	32	< 1%
Inglewood	9	34	< 1%
La Habra	2	17	< 1%
Lakewood	2	12	< 1%
Long Beach	1	17	< 1%
Los Angeles	36	491	11%
Malibu	3	3	< 1%
Manhattan Beach	1	2	< 1%
Montebello	1	11	< 1%
Monterey Park	45	824	18%
Pacific Palisades	9	115	3%
Playa Del Rey	7	7	< 1%
Rancho Palos Verdes	2	6	< 1%
Redondo Beach	6	36	< 1%
Rosemead	2	2	< 1%
Rowland Heights	2	4	< 1%
Santa Cruz	1	30	< 1%
Santa Monica	11	1359	30%
Topanga	1	45	< 1%
Whittier	1	14	< 1%
<b>TOTAL</b>	<b>204</b>	<b>4504</b>	0 10 20 30 40 50 60 70 80 90 100



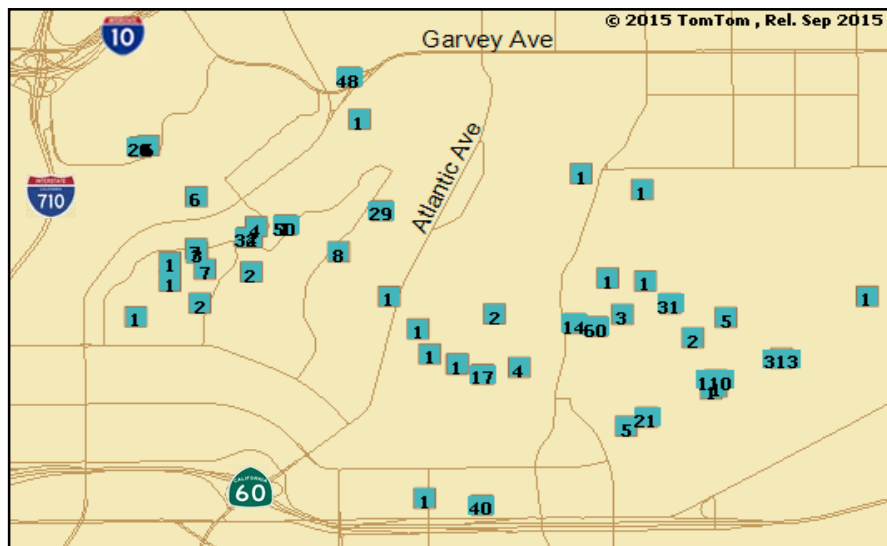
\*Box indicates the location of complainant and the number within the box indicates number of complaints submitted  
Note: Not included in map are complaints received from Camarillo and Santa Cruz, CA.



Map 1



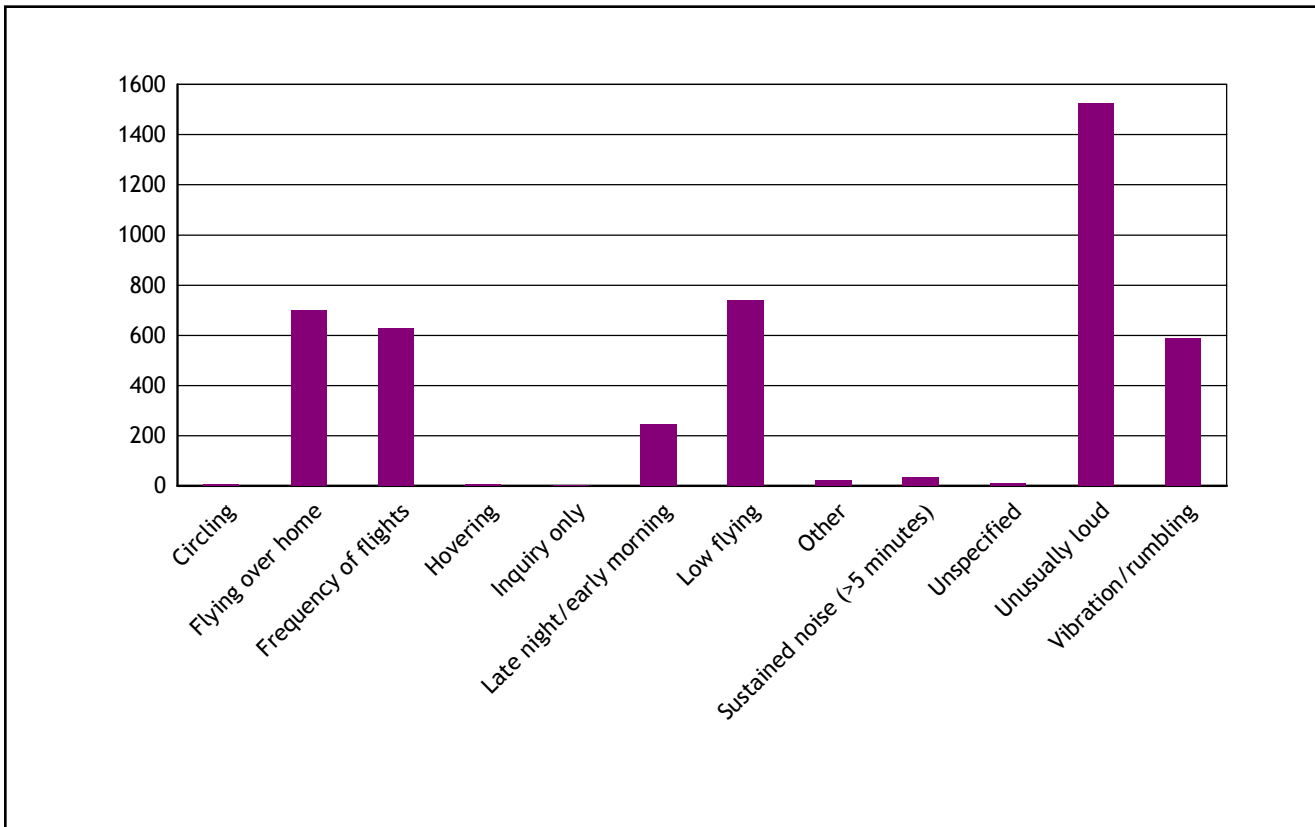
Map 2



Map 3

\*Box indicates the location of complainant and the number within the box indicates number of complaints submitted

Type of Disturbance*	Number of Complaints
Circling	5
Flying over home	699
Frequency of flights	627
Hovering	6
Inquiry only	2
Late night/early morning	244
Low flying	741
Other	23
Sustained noise (>5 minutes)	36
Unspecified	10
Unusually loud	1523
Vibration/rumbling	588
<b>TOTAL</b>	<b>4,504</b>



Note: \* As reported by complainant.

Date	Time	Operator/ Flight No.	Aircraft Type	Runway	Operation Detail	Complaint Count
10/07/2016	0:57:04	QFA16	B744	07L	East Departure during Over Ocean	2
10/13/2016	19:00:35	ACA795	A320	24R	Go-around Operation	2
10/13/2016	19:45:12	EVA016	B77W	24R	Go-around Operation	2

<u>Note</u>	
ACA	AIR CANADA
EVA	EVA AIRWAYS
QFA	QANTAS AIRWAYS, LTD

Date	Start Time	End Time	Duration (hours:mins:secs)	Flow	Reason
10/1/2016	00:00:00	06:29:59	06:29:59	West Flow	Due to Aircraft Design Group VI Movements
10/2/2016	00:00:00	06:29:59	06:29:59	West Flow	Due to Aircraft Design Group VI Movements
10/3/2016	00:00:00	00:12:59	00:12:59	West Flow	Over Ocean Operations Transition
10/3/2016	06:18:00	06:29:59	00:11:59	West Flow	West Operations Transition
10/4/2016	00:00:00	00:25:59	00:25:59	West Flow	SoCal TRACON Decision
10/4/2016	05:35:00	06:29:59	00:54:59	East Flow	FAA Flight Checks
10/5/2016	00:00:00	00:50:59	00:50:59	West Flow	Due to Aircraft Design Group VI Movements
10/6/2016	06:22:00	06:29:59	00:07:59	West Flow	SoCal TRACON Decision
10/7/2016	06:18:00	06:29:59	00:11:59	West Flow	SoCal TRACON Decision
10/8/2016	06:10:00	06:29:59	00:19:59	West Flow	Unknown
10/9/2016	06:20:00	06:29:59	00:09:59	West Flow	West Operations Transition
10/10/2016	00:00:00	00:01:59	00:01:59	West Flow	Over Ocean Operations Transition
10/11/2016	00:00:00	02:57:59	02:57:59	West Flow	Winds
10/11/2016	06:25:00	06:29:59	00:04:59	West Flow	West Operations Transition
10/12/2016	00:00:00	06:29:59	06:29:59	West Flow	Runway 24R/06L Closed
10/13/2016	00:00:00	06:29:59	06:29:59	West Flow	Runway Closure
10/14/2016	00:00:00	06:29:59	06:29:59	West Flow	Runway Closure
10/15/2016	00:00:00	06:29:59	06:29:59	West Flow	Runway Closure
10/16/2016	00:00:00	06:29:59	06:29:59	West Flow	Runway Closure
10/17/2016	00:00:00	06:29:59	06:29:59	West Flow	Runway Closure
10/18/2016	00:00:00	00:03:59	00:03:59	West Flow	Over Ocean Operations Transition
10/18/2016	06:10:00	06:29:59	00:19:59	West Flow	SoCal TRACON Decision
10/19/2016	00:00:00	00:09:59	00:09:59	West Flow	SoCal TRACON Decision
10/21/2016	00:00:00	00:59:59	00:59:59	West Flow	Runway Closure





Date	Start Time	End Time	Duration (hours:mins:secs)	Flow	Reason
10/21/2016	06:24:00	06:29:59	00:05:59	West Flow	West Operations Transition
10/22/2016	00:00:00	06:29:59	06:29:59	West Flow	Runway Closure
10/23/2016	00:00:00	06:29:59	06:29:59	West Flow	Runway Closure
10/24/2016	00:00:00	01:04:59	01:04:59	West Flow	Volume
10/24/2016	02:56:00	06:29:59	03:33:59	West Flow	Weather
10/25/2016	00:00:00	02:14:59	02:14:59	West Flow	Winds
10/25/2016	06:21:00	06:29:59	00:08:59	West Flow	West Operations Transition
10/26/2016	00:00:00	06:29:59	06:29:59	West Flow	Low Visibility
10/27/2016	06:20:00	06:29:59	00:09:59	West Flow	West Operations Transition
10/28/2016	00:00:00	00:52:59	00:52:59	West Flow	Inbound Emergency
10/28/2016	04:19:00	04:58:59	00:39:59	West Flow	West Traffic Due To Winds
10/28/2016	05:15:00	06:29:59	01:14:59	East Flow	Winds
10/29/2016	00:00:00	00:09:59	00:09:59	West Flow	Over Ocean Operations Transition
10/29/2016	06:20:00	06:29:59	00:09:59	West Flow	West Operations Transition
10/30/2016	00:00:00	00:11:59	00:11:59	West Flow	Over Ocean Operations Transition
10/30/2016	04:17:00	06:29:59	02:12:59	West Flow	Wind
10/31/2016	00:00:00	06:29:59	06:29:59	West Flow	Unknown